

Left Atrial Appendage Closure and the Figure-of-Eight Artifact

Silvio Henrique Barberato

Cardioeco - Centro de Diagnóstico Cardiovascular, Curitiba, PR - Brazil

After percutaneous left atrial appendage (LAA) closure with the Amplatzer cardiac plug (ACP), an intriguing image in the shape of the number eight (figure-of-eight) is frequently observed on electrocardiography. This phenomenon is an image artifact that results from an interaction between the metal mesh of the ACP and the ultrasound waves¹. This finding should not be interpreted as a sign of incorrect ACP implantation.

Keywords

Atrial Appendage/pathology; Echocardiography.

Mailing Address: Silvio Henrique Barberato •

Rua Rezala Simão, 1316/ Casa 28, Santa Quitéria. Postal Code 80330-180, Curitiba, PR – Brazil

E-mail: shbarberato@hotmail.com

Manuscript received June 01, 2014; revised manuscript June 13, 2014; accepted June 13, 2014.

Author contributions

Conception and design of the research, Acquisition of data, Analysis and interpretation of the data, Statistical analysis, Writing of the manuscript and Critical revision of the manuscript for intellectual content: Barberato SH.

Potential Conflict of Interest

No potential conflict of interest relevant to this article was reported.

Sources of Funding

There were no external funding sources for this study.

Study Association

This study is not associated with any thesis or dissertation work.

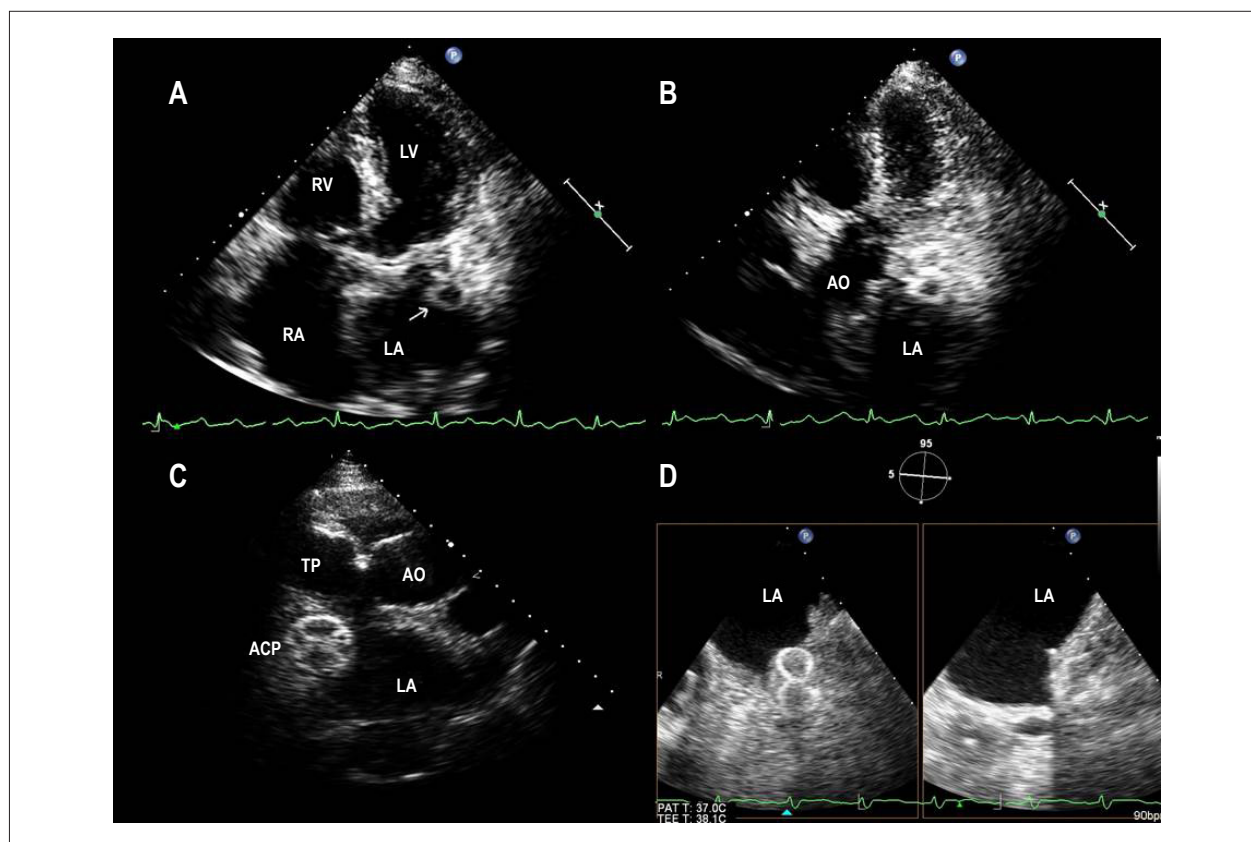


Figure 1 – Echocardiography findings for a 72-year-old female patient who underwent percutaneous LAA closure with the ACP. (A) Transthoracic echocardiographic image in the 5-chamber apical plane with the figure-of-eight image (arrow) in the left atrium (LA); (B) Increased anterior inclination of the transducer and visualization of the figure-of-eight; (C) Transthoracic echocardiographic image in the 3-chamber parasternal plane; (D) Transesophageal echocardiographic image with the figure-of-eight in the 5° projection (left), but not in the 95° projection (right) of the LAA.

DOI: 10.5935/abc.20140119

Reference

1. Bertrand PB, Grieten L, De Meester P, Verbrugge FH, Mullens W, Verhaert D et al. Relevance of the figure-of-eight artifact on echocardiography after percutaneous left atrial appendage closure with the Amplatzer cardiac plug. *J Am Soc Echocardiogr.* 2014; 27 (3): 323-8.e1.