



Effect of rootstock on the scion of *Hevea brasiliensis* through metabolic analysis of latex samples by ^1H NMR

Eduardo Sanches Pereira do Nascimento^{1*}, Clayton Rodrigues de Oliveira¹, Paulo de Souza Gonçalves², Reginaldo Brito da Costa³, Rogério Manoel Biagi Moreno⁴, Luiz Henrique Capparelli Mattoso⁴ and Antonio Gilberto Ferreira^{1*}

Received 4 April 2011

Accepted 22 June 2011

ABSTRACT - In this study, the effect of rootstock on grafting through metabolomic analysis of latex (*Hevea brasiliensis*) samples was verified by ^1H nuclear magnetic resonance (NMR) and multivariate data analysis. Sixteen metabolites present in the latex cytosol were characterized by NMR. PCA analysis showed that the latex samples of the RR and GR groups can be differentiated. The GR group samples present a metabolic profile similar to the RR group samples, while the RG group is in an intermediate position between RR and GG groups. Sucrose and formate contributed greatly to the separation obtained by PCA, presenting a good correlation between the results. ^1H NMR was an efficient technique to differentiate latex samples from different types of rootstocks and grafting and in the future could be used to predict rubber production by latex analysis.

Key words: metabolic profile, plant metabolomics, chemometric analysis, nuclear magnetic resonance.

INTRODUCTION

Latex can be defined as a stable colloidal dispersion of a polymeric substance (rubber particles) in an essentially aqueous medium. Other minor compounds are present in latex composition such as proteins, carbohydrates, lipids, mineral salts, etc. Latex shows a distinct concentration in its chemical composition that depends of a lot of factors such as cultivation, soil, fertilizer and extraction procedure. Due to its intrinsic structure, latex possesses unique properties, being used in several industrial processes (Rippel and Bragança 2009).

Natural latex is extracted from *Hevea brasiliensis*, a tree also known as seringueira. Among the 11 *Hevea* existing species, the *brasiliensis* is the most outstanding,

presenting the highest latex yield and genetic variability for disease resistance (Rippel and Bragança 2009). Due to its great vegetative and productive variability, seringueira seeds are used only for rootstock formation in nurseries and not for field plantations. Thus, plant propagation is preferentially made by grafting, using well defined clones, such as PB 235, RRIM 600 and GT 1. Grafting does not guarantee that the graft of a monoclonal block will be isogenic; in most rubber trees such expected uniformity by vegetative propagation does not occur (Cardinal et al. 2007).

Metabolomic analysis is defined as the identification and quantification of all metabolites in a biological system. In practice, most metabolomic studies are restricted to the use of analytical techniques capable of providing a general

¹ Universidade Federal de São Carlos (UFSCar), Departamento de Química, Campus São Carlos, 13.565-905, São Carlos, SP, Brazil; *Email: giba_04@yahoo.com.br

² Instituto Agrônomo Campinas (IAC), Programa Seringueira, 13020-970, Campinas, SP, Brazil

³ Universidade Federal de Mato Grosso (UFMT), Faculdade de Engenharia Florestal, Campus Cuiabá, 78.060-900, Cuiabá, MT, Brazil

⁴ Empresa Brasileira de Pesquisa Agropecuária, 13560-970, São Carlos, SP, Brazil

view of the metabolites, thus producing a metabolic fingerprinting of the system. Plant metabolomics is defined as the application of this concept to a specific system, a plant cultivated under defined conditions. In this case, the objective is to provide a broad view of the metabolic state of the plant, and show how the variation of this metabolic pattern affects the system under study (Weckwerth 2003, Schripsema 2010).

Several detection techniques have been used for metabolomic analysis, with the most outstanding being mass spectrometry (MS) and nuclear magnetic resonance (NMR) (Jonsson et al. 2004, Dunn et al. 2005). These techniques can be used directly or hyphenated to separation systems, such as liquid or gas chromatography. The main advantage of MS is its high sensitivity and capacity to detect hundreds of metabolites in a single run. NMR stands out for its reproducibility, short analysis time and mainly, for its structural identification capacity.

NMR is based on the principle that nuclei of certain atoms, when placed in a magnetic field, are capable of absorbing electromagnetic radiation at a characteristic frequency depending upon the position of each nucleus in a molecule. This radiation is later emitted and detected, producing a resonance spectrum of the nuclei that were excited (Jacobsen 2007). The large amount of information in a ¹H NMR, i.e., dozens of compounds that can be detected and which, in turn, present hundreds of resonance frequencies, makes its analysis quite laborious. Often these spectra contain information not very well perceived through a simple visual inspection. Thus, the use of statistical computational programs has helped to obtain these results, with multivariate data analysis being a widely applied strategy (Taylor et al. 2002, Katajamaa and Oresic 2007).

The objective of this study was to evaluate the influence of rootstock on grafting through metabolomic analysis of latex samples (*Hevea brasiliensis*) by ¹H NMR combined with multivariate data analysis.

MATERIALS AND METHODS

Experimental design for collection of the latex samples

The samples were collected at the former Pindorama Experimental Station of the Agronomic Institute (IAC), known today as 'Polo Regional de Desenvolvimento Tecnológico dos Agronegócios do Centro-Norte da Agência Paulista de Tecnologia dos Agronegócios' (APTA), in Pindorama, São Paulo (Cardinal et al. 2007).

Two *Hevea* clones (*viz.* RRIM 600 and GT 1) and two *Hevea* rootstocks (*viz.* RRIM 600 and GT 1) were combined to give four combinations. The illegitimate seeds for the rootstocks were collected in the border of monoclonal blocks sizing at least 2.0 ha. The sections (clones) were collected from the budwood stock nursery in Pindorama. These seeds were germinated in pre-nursery and transferred to polybags. One year later, the rootstocks raised in the polybags were budgrafted with the two clonal materials (sections). Each of two rootstocks and two scions were built up four combinations (Table 1).

Table 1. Experimental design of the collected latex samples

Samples Code	Grafting				Rootstock ^a Code
	Rootstock		Grafting		
	RRIM 600 ^b	GT 1 ^c	RRIM 600 ^b	GT 1 ^c	
RR09	X	-	X	-	-
RR10	X	-	X	-	-
RR11	X	-	X	-	CR03
RR12	X	-	X	-	CR04
RG13	X	-	-	X	CR01
RG14	X	-	-	X	CR02
RG15	X	-	-	X	-
RG16	X	-	-	X	-
GR17	-	X	X	-	CG05
GR18	-	X	X	-	-
GR19	-	X	X	-	-
GR20	-	X	X	-	-
GG21	-	X	-	X	-
GG22	-	X	-	X	CG06
GG23	-	X	-	X	CG07
GG24	-	X	-	X	CG08

^a Rootstock latex samples were taken from the graft samples studied. ^b RRIM 600 (Tijir 1 x PB 86). ^c GT1 (primary clone). x: present; -: absent.

When the four scion-rootstock combinations were 20 year old, a total of 24 latex samples were collected and analyzed in this study. Eight tappings (two each one) were performed in the rootstocks (RRIM 600 and GT 1) of the combinations. The other sixteen samples collected consisted of eight samples of latex RRIM 600 scions (four RRIM 600 scions grafted on RRIM 600 rootstocks) and four RRIM 600 scions grafted on GT 1 rootstocks), and eight samples of latex GT 1 scions (four GT 1 scions grafted on RRIM 600 and four GT scion grafted on GT 1 rootstocks). The RR and GG group samples can be considered as controls since the rootstock and the graft belong to the same type of clone. Aiming to obtain homogenous samples, plantation border effects were eliminated.

Preparation of the latex samples

The trees were tapped according to the ½ S d/4 5d/7, ET 2.5 %, 8/y system (half spiral cut, tapped twice a week), and stimulated with 2.5 % Ethefon applied on the tapping panel.

The latex samples were prepared by adding 500 mL of D₂O to a 500 mg sample. The D₂O solution was prepared by adding a known amount of the internal standard TMSP-d₄ [2,2,3,3-d₄-(3-trimethylsilyl)-sodium propionate]. The samples were centrifuged for 10 min at 10,000 rpm at room temperature. Centrifugation separates the sample into four well-defined fractions, as described in the literature (Cook and Sekhar 1955). The intermediary fraction corresponds to latex cytosol. For NMR analyses, 600 mL of the intermediary fraction was collected and transferred into a 5 mm NMR tube.

NMR analyses

NMR measurements were performed on a Bruker Avance III Nanobay 9.4 T (400.13 MHz for hydrogen frequency) spectrometer placed at the NMR Laboratory of the Chemistry Department – Universidade Federal de São Carlos. The determinations were made with a BBFO 5 mm probe (direct detection) with field gradient generating coils in the z coordinate.

All the spectra were acquired at 303K, using the presaturation pulse sequence NOESYGPPR1D to suppress the residual water signal. Sixty-four scans (ns) were accumulated, with a delay time between each acquisition of 4 s (d1), acquisition time of 3.98 s (aq) with 64 Kb points during acquisition (td), and presaturation pulse attenuation of 41.40 dB (pldb9). The mixture time used was 10 ms (d8) and 90° pulse duration was 9.98 ms (p1). Spectra processing were carried out with 64 Kb points (si), using an exponential multiplication with lb = 0.3 Hz and manual phase correction.

Bi-dimensional gCOSY and J-res spectra were obtained using the pulse sequences cosygpprqf and lcjrespr, spectral width (swh) in F1 8012 and 50, and td in F1 of 256 and 128, respectively. The following parameters were the same for the two measurements: ns = 16, d1 = 2 s, td in F2 of 4 Kb and swh in F2 8012. Spectra processing were carried out with 4 Kb points in F2 and 1 Kb points in F1 (si).

Multivariate analyses

Multivariate data analyses were carried out using the software The Unscrambler® v. 9.7. At the preprocessing

stage, all data were autoscaled. For matrix construction, the regions referring to the water, polyisoprene, and TMSP-d₄ signal were removed. The algorithm used in the multivariate analyses was PCA (*Principal Component Analyses*) (Beebe et al. 1998).

RESULTS AND DISCUSSION

Metabolic profile

A typical ¹H NMR spectrum of a latex sample is shown in Figure 1. The metabolites were assigned according to literature (Sobolev et al. 2005) and through the analyses of bi-dimensional spectra gCOSY and J-res (Figure 2). Table 2 lists the metabolites identified in the latex samples along with their respective chemical shifts.

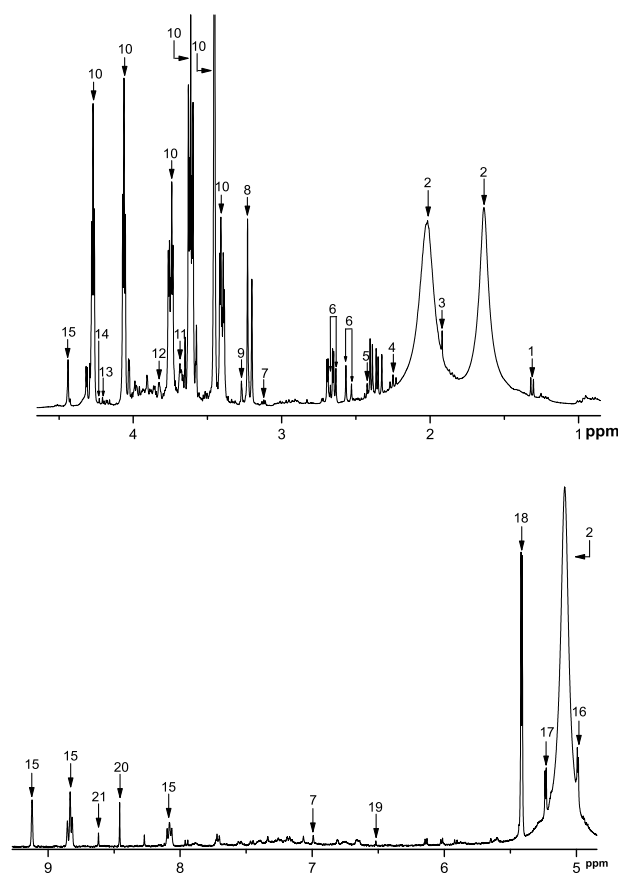


Figure 1. Typical ¹H NMR spectrum of a latex sample.

Sixteen metabolites were identified in the latex cytosol. As observed in Figure 1, the metabolite present in the highest amount (signals in the range of 3.0 to 4.0 ppm) is quebrachitol (2-O-methyl-l-inositol), a cyclic polyol

Table 2. Metabolites identified in the latex samples

Code	Metabolite	δ ¹ H ppm (multiplicity, J Hz)
1	Lactate	1.33 (d, 6.78) 1.64 (bs)
2	Polyisoprene	2.02 (bs) 5.09 (bs)
3	Acetate	1.92 (s)
4	Acetoacetate	2.26 (s)
5	Succinate	2.42 (s)
6	Citrate	2.55 (d, 15.16) 2.65 (d, 15.16)
7	Aconitate	3.12 (s) 6.99 (s)
8	Choline (8)	3.23 (s)
9	Betaine (9)	3.27 (s) 3.40 (ddd) 3.45 (s)
10	Quebrachitol	3.61 (ddd) 3.74 (ddd) 4.06 (dd) 4.27 (dd)
11	Unknown	3.68
12	Unknown	3.83
13	Unknown	4.20
14	Unknown	4.22 4.44 (s)
15	Trigonelline	8.08 (t, 7.00) 8.83 (t, 7.00) 9.12 (s)
16	Raffinose	4.99 (d, 3.80)
17	α -Glucose	5.24 (d, 3.80)
18	Sucrose	5.41 (d, 3.80)
19	Fumarate	6.52 (s)
20	Formate	8.46 (s)
21	Unknown	8.62

S: singlet, bl: broad singlet, d: doublet, dd: double doublet, ddd: double double doublet, t: triplet.

tendency to cluster with the RR and GG groups, while the GR group samples cluster preferentially with the RR group samples. The loading plot for the RR, GG, RG and GR samples is presented in Figure 3d. The same signals responsible for the separation of the RR and GG samples are also found to have a strong influence on this separation.

To verify the variability of metabolites in the different latex samples, a relative quantification was carried out for sucrose and formate, important compounds for the separation of groups for PCA analysis, and quebrachitol (Table 3). The considerations done below are based only on the average values of the metabolites found for each group, since the number of samples is not sufficient to provide significant information through a univariate statistical analysis. In general, no significant variation was observed

in the quebrachitol content among the grafting latex samples. This information is observed in the loading plots of the PCA analyses, as this metabolite had no influence on the separations obtained. The GG group samples presented higher amounts of sucrose and formate than the RR group samples. The difference in the concentration of these metabolites explains the good separation obtained in the PCA analyses. The GR group samples presented amounts of sucrose and formate similar to those of the RR group, indicating why these samples cluster in the PCA analyses (Figure 3c). The RG group samples presented intermediary sucrose and formate values, the reason why this group is between the RR and the GG group.

Rootstock samples CR01 and CR02 presented higher amounts of sucrose and lower amounts of quebrachitol, compared to the samples of the same group CR03 and CR04. This difference can be explained by the fact that the samples CR01 and CR02 were grafted with clone GT 1, whereas the samples CR03 and CR04 were grafted with RRIM 600, indicating a possible influence of grafting on rootstock. The rootstock samples CG06 and CG07 grafted with GT 1 presented higher amounts of sucrose, compared to sample CG05, grafted with RRIM600. In general, it was observed that the rootstock samples grafted with GT 1 presented higher sucrose amounts than those grafted with RRIM 600.

CONCLUSIONS

Nuclear magnetic resonance (¹H NMR and bi-dimensional spectra) was an important tool for identification and relative quantification of the main metabolites in latex samples. ¹H NMR data, combined with multivariate analyses, allowed distinguishing among the latex samples in groups according to rootstock and grafting. Determination of relative amounts of sucrose and formate in the latex samples, along with identification of the unknown metabolites presented in this study, could help future correlation of metabolites in latex and rubber production through determination of their respective biochemical functions.

ACKNOWLEDGEMENTS

To Fundação de Amparo à Pesquisa do Estado de São Paulo (FAPESP), Conselho Nacional de Desenvolvimento Científico e Tecnológico (CNPq), and Coordenação de Aperfeiçoamento de Pessoal de Nível Superior (CAPES) for the financial support.

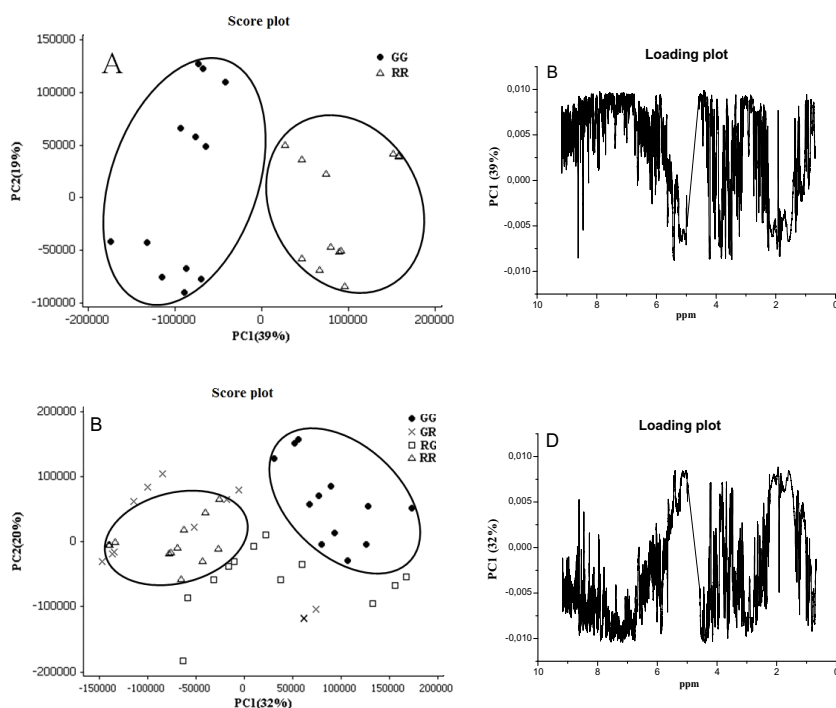


Figure 3. Results obtained from PCA analyses. A) Score plot of RR and GG groups B) Loading plot of RR and GG groups; C) Score plot of RR; GG, RG and GR groups; D) Loading plot of RR, GG, RG, and GR groups.

Table 3. Relative quantification (metabolite/TMSP-d4 area) of some metabolites that contributed for discrimination between the RR, GG, RG and GR groups

Sample	Sucrose	Average	Formate	Average	Quebrachitol	Average
CR01	0.149		0.00275		3.784	
CR02	0.0880		0.00519		2.705	
CR03	0.0220	0.0713	0.00328	0.00458	4.400	3.94
CR04	0.0260		0.00710		4.878	
CG05	0.0300		0.00441		4.776	
CG06	0.2030		0.00420		4.739	
CG07	0.1060	0.0923	0.00535	0.00595	4.159	4.57
CG08	0.0300		0.00985		4.591	
RR09	0.0190		0.00266		5.539	
RR10	0.0590		0.00478		5.861	
RR11	0.0500	0.0427	0.00340	0.00299	4.461	5.09
RR12	ND		0.00111		4.495	
RG13	0.0890		0.00608		3.735	
RG14	0.0680		0.01000		2.875	
RG15	0.0340	0.0645	0.00459	0.00722	4.403	3.57
RG16	0.0670		0.00821		3.273	
GR17	0.0440		0.00254		4.370	
GR18	0.0230		0.00176		4.810	
GR19	0.0170	0.0280	0.00261	0.00211	4.427	4.65
GR20	ND		0.00152		4.976	
GG21	0.2170		0.01170		4.625	
GG22	0.2770		0.00675		4.426	
GG23	0.1570	0.209	0.00549	0.00700	4.629	4.81
GG24	0.1840		0.00404		5.554	

Influência de porta-enxerto sobre enxerto através da análise metabolômica de amostras de látex de *Hevea brasiliensis* por RMN de ^1H

RESUMO - Nesse trabalho a influência do porta-enxerto sobre o enxerto nas amostras de látex (*Hevea brasiliensis*) foi verificada através da análise de RMN de ^1H e análise multivariada dos dados. Através da análise de RMN de ^1H foi possível caracterizar 16 metabólitos presentes no citosol do látex. A análise de PCA mostrou que as amostras de látex dos grupos RR e GG podem ser diferenciadas. As amostras do grupo GR possuem perfil metabólico semelhante às amostras do grupo RR, enquanto o grupo RG situa-se em posição intermediária entre os grupos RR e GG. A sacarose e o formiato contribuíram em grande parte pela separação obtida por PCA e apresentaram boa correlação com os resultados obtidos. A RMN de ^1H provou ser uma técnica eficiente na diferenciação entre amostras provenientes de diferentes tipos de porta-enxerto e enxerto e pode futuramente ser utilizada para prever a produção de borracha através da análise do látex.

Palavras-chave: perfil metabólico, metabolômica de plantas, análise quimiométrica, ressonância magnética nuclear.

REFERENCES

- Beebe KR, Pell RJ and Seasholtz MB (1998) **Chemometrics: a practical guide**. John Wiley & Sons, Nova Jersey, 348p.
- Cardinal ABB, Gonçalves OS and Martins ALM (2007) Influência de seis porta-enxertos sobre a produção de clones superiores de seringueira. **Bragantia** **66**: 277-284.
- Cook AS and Sekhar BC (1955) Fractions from *Hevea brasiliensis* latex centrifuged at 59,000 g. **Journal of The Rubber Research Institute of Malysia** **14**: 163.
- Defernez M, Gunning YM, Parr AJ, Shepherd LVT, Davies HV and Colquhoun IJ (2004) NMR and HPLC-UV profiling of potatoes with genetic modifications to metabolic pathways. **Journal of Agricultural and Food Chemistry** **52**: 6075-6085.
- Dunn WB, Bailey NJC and Johnson HE (2005) Measuring the metaboloma: current analytical technologies. **The Analyst** **130**: 606-625.
- Dusotoit-Coucaud A, Porcheron B, Brunel N, Kongsawadworakul P, Franchel J, Viboonjun U, Chrestin H, Lemoine R and Sakr S (2010) Cloning and characterization of a new polyol transporter (HbPLT2) in *Hevea brasiliensis*. **Plant & Cell Physiology** **51**: 1878-1888.
- Jacobsen NE (2007) **NMR spectroscopy explained: simplified theory, applications and examples for organic chemistry and structural biology**. John Wiley & Sons, Nova Jersey, 668p.
- Jonsson P, Gullberg J, Nordstrom A, Kusano M, Kowalczyk M, Sjoström M and Moritz T (2004) A Strategy for Identifying Differences in Large Series of Metabolomic Samples Analyzed by GC/MS. **Analytical Chemistry** **76**: 1738-1745.
- Katajamaa M and Oresic M (2007) Data processing for mass spectrometry-based metabolomics. **Journal of Chromatography A** **1158**: 318-328.
- Ky CL, Louarn J, Dussert S, Guyot B, Hamon S and Noirot M (2001) Caffeine, trigonelline, chlorogenic acids and sucrose diversity in wild *Coffea arabica* L. and *C. canephora* P. **Food Chemistry** **75**: 223-230.
- Le Gall G, Colquhoun IJ, Davis AL, Collins GJ and Verhoeven ME (2003) Metabolite profiling of tomato (*Lycopersicon esculentum*) using H-1 NMR spectroscopy as a tool to detect potential unintended effects following a genetic modification. **Journal of Agricultural and Food Chemistry** **51**: 2447-2456.
- Rippel MM and Bragança FC (2009) Borracha natural e nanocompósitos com argila. **Química Nova** **32**: 818-826.
- Schripsema J (2010) Application of NMR in plant metabolomics: techniques, problems and prospects. **Phytochemical Analysis** **21**: 14-21
- Shrestha T and Bisset NG (1991) Quaternary nitrogen-compounds from south-american moraceae. **Phytochemistry** **30**: 3285-3287.
- Sobolev AP, Brosio E, Gianferri R and Segre AL (2005) Metabolic profile of lettuce leaves by high-field NMR spectra. **Magnetic Resonance in Chemistry** **43**: 625-638.
- Taylor J, King RD, Altmann T and Fiehn O (2002) Application of metabolomics to plant genotype discrimination using statistics and machine learning. **Bioinformatics** **18**: S241-S248.
- Weckwerth W (2003) Metabolomics in systems biology. **Annual Review of Plant Biology** **54**: 669-689.