

Isolated Double Orifice Mitral Valve – a Rare Finding in an Elderly Man

Andrea O Ciobanu^{1,2}, Sean Bennett³, Renato D Lopes⁴, Dragos Vinereanu¹

University of Medicine and Pharmacy Carol Davila, Bucharest / Cardiology Department, University and Emergency Hospital of Bucharest¹ – Romania; National Institute of Pathology Victor Babes², Bucharest – Romania; King Faisal Cardiac Centre, National Guard Health City³, Jeddah – Saudia Arabia; Duke Clinical Research Institute, Duke University Medical Center⁴, Durham – USA

We present herein several transesophageal echocardiogram (TEE) images of a 60-year-old man referred to the cardiac surgeon for a triple coronary artery bypass graft procedure, in which a normally-functioning double orifice mitral valve (DOMV) was an incidental finding during routine intraoperative TEE. This is a very rare congenital malformation,

even rarer as an isolated anomaly in an elderly patient. Three-dimensional TEE (3D-TEE) confirmed the diagnosis and provided complete and fast assessment of the mitral valve and the surrounding structures and all the information needed to reassess the surgical strategy in the very short pre-bypass period.

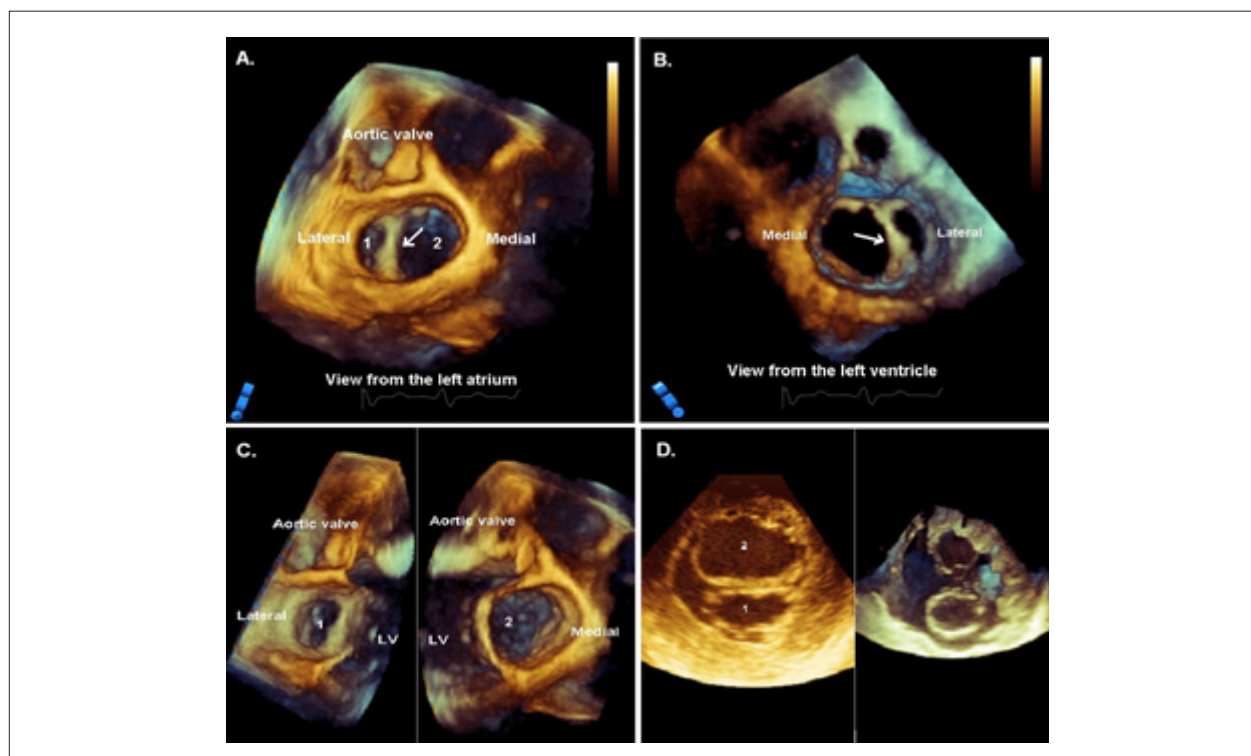


Figure 1 – Real-time 3D-transesophageal echocardiogram „en face” view from the left atrium („surgeon’s view”, Panel A) and from the LV (Panel B) revealing two asymmetrical orifices, a smaller lateral (1) and a bigger medial (2) mitral orifice, separated by fibrous tissue (arrow). Panel C- achieved after using a sagittal cross-sectional plane to “split” the valve and the LV in two for better view of the orifices and unrestricted opening of the mitral valve. Panel D. 2D (left) and 3D-zoom mode (right) transgastric view of the two orifices. LV, left ventricle.

Keywords

Mitral Valve/abnormalities; Heart Defects, Congenital; Aged; Echocardiography, Three-Dimensional/methods.

Mailing Address: Dragos Vinereanu •

University and Emergency Hospital Bucharest. University of Medicine and Pharmacy Carol Davila, Sector 5. Postal Code 050098, Bucharest, Bucharest – Romania

E-mail: vinereanu@gmail.com

Manuscript received on February 19, 2015; revised on February 27, 2015; accepted on March 04, 2015.

Acknowledgement

This paper is partly supported by the Sectorial Operational Programme of Human Resources Development (SOPHRD), financed by the European Social Fund and the Romanian Government under contract number POSDRU 141531.

Author contributions

Conception and design of the research: Ciobanu AO, Bennett S, Vinereanu D. Acquisition of data: Ciobanu AO, Bennett S. Analysis and interpretation of the data: Ciobanu AO, Bennett S, Lopes RD, Vinereanu D. Writing of the manuscript: Ciobanu AO. Critical revision of the manuscript for intellectual content: Ciobanu AO, Bennett S, Lopes RD, Vinereanu D. Supervision / as the major investigator: Vinereanu D.

Potential Conflict of Interest

No potential conflict of interest relevant to this article was reported.

Sources of Funding

There were no external funding sources for this study.

Study Association

This study is not associated with any thesis or dissertation work.