

Triatoma rubrovaria (Blanchard, 1843) (Hemiptera-Reduviidae-Triatominae) III: Patterns of Feeding, Defecation and Resistance to Starvation

Carlos Eduardo Almeida/**/+ , Cesar Nascimento Francischetti, Raquel S Pacheco*, Jane Costa

Núcleo de Informatização, Coleção Entomológica, Departamento de Entomologia *Laboratório de Sistemática Bioquímica, Instituto Oswaldo Cruz-Fiocruz, Av. Brasil 4365, 21045-900 Rio de Janeiro, RJ, Brasil **Núcleo Avançado de Estudos de Vetores e Artrópodes Peçonhentos, Museu de Ciências Naturais, Centro Universitário de Barra Mansa, UBM, Barra Mansa, RJ, Brasil

Data from the Chagas Disease Control Program indicate a growing domiciliary and peridomiciliary invasion of Triatoma rubrovaria in the State of Rio Grande do Sul, where it has become the most frequent triatomine species captured there since the control of T. infestans. Bionomic characteristics that could influence the vectorial capacity of T. rubrovaria as vector of Trypanosoma cruzi were evaluated: patterns of (i) feeding, (ii) defecation, and (iii) resistance to starvation, using insects fed on mice. Fifty three percent of the females showed a defecation pattern conducive to chagasic transmission, defecating either on or near the bite site. The averages of the resistance to starvation varied from 48.1 to 179 days, for the first and fifth nymphal stages, respectively. Our study shows that with respect to the patterns of feeding, defecation and resistance to fasting, T. rubrovaria presented similar rates to the ones observed for other effective vector species, such as T. infestans. Thus, based on our studies we conclude that T. rubrovaria has biological characteristics that can positively influence its capacity to become infected and transmit T. cruzi, and also to keep residual populations after chemical control interventions.

Key words: *Triatoma rubrovaria* - feeding patterns - resistance to starvation

Triatoma rubrovaria (Blanchard, 1843) (Hemiptera, Reduviidae, Triatominae) is widespread in Uruguay, and some neighboring parts of Northeastern Argentina. In Brazil, its presence has been confirmed only in the southern states of Paraná (PR) and Rio Grande do Sul (RS). This species of triatomine is found mainly among exfoliate rocks known as 'pedregales' (Salvatella et al. 1995). Lent (1942) has earlier reported *T. rubrovaria* (*Eutriatoma rubrovaria*) as a sylvatic species inhabiting rock piles and may rarely be found in human dwellings. Further, Silva and Silva (1993) showed that it may be a highly competent vector of *Trypanosoma cruzi*, the causative agent of Chagas disease. Vinhaes and Dias (2000) reported 1.02% of natural infection for a total of 1,746 *T. rubrovaria* specimens examined.

In RS, data from the Chagas Disease Control Program indicate an increasing of domiciliary and peridomiciliary invasion of *T. rubrovaria*, where it has become the most frequently triatomine species captured in that State since the control of *Triatoma infestans* (Klug, 1834) (Almeida et al. 2000). Isoenzymatic and chromatic studies developed by Almeida et al. (2002b) showed two distinct phenotypic

patterns for this species. Salvatella et al. (1994), utilizing the precipitin test, demonstrated that it feeds on humans in Uruguay. Later, studies performed by Almeida et al. (2002a) in several localities of the RS, indicated its food eclecticism in this State. A total of 85 samples were analyzed, and the highest reactivity was observed for the anti-rodent serum in most of the localities. Just 1.3% of positivity for human blood was recorded.

As originally demonstrated by Dias (1956), the success of vectorial transmission of human Chagasic infection depends among other factors, on the capacity of the infected domiciliated triatomines to defecate during or shortly after the blood meal.

Pellegrino (1952) emphasized the epidemiological importance of the starvation resistance for the triatomines. Afterwards, Perlowagora-Szumlewicz (1954, 1969) noted that insecticide applications must be carried out in pre-established regular periods of time for species that present a high resistance to fast, stating that only then the domiciliary reinfestations can be minimized. Several other authors have conducted extensive studies about various species of triatomines analyzing these biologic aspects, such as Zeledon et al. (1970), Costa and Perondini (1973), Jurberg and Costa (1989), and Costa and Jurberg (1989).

The assessment of the vectorial capacity of the triatomines through biological studies is essential to define monitoring actions and serves as a basis for control measures (Perlowagora-Szumlewicz 1969, Costa 1999, Soares et al. 2000). In order to clarify bionomic aspects that could influence the vectorial capacity of *T. rubrovaria*, the patterns of feeding, defecation and resistance to starvation were evaluated.

Supported by Brazilian National Health Foundation, agreement term no. 1159/98 and The State of Rio de Janeiro Research Foundation, Brazil.

+Corresponding author. Fax: +55-21-2573.4468. E-mail: almeidace@ioc.fiocruz.br

Received 26 September 2002

Accepted 31 January 2003

MATERIALS AND METHODS

Insects - Specimens used in this investigation were originated from a colony maintained for one year under laboratory conditions: temperature (min. 21.5°C, max. 32°C, \bar{X} = 27.63°C), relative humidity (min. 52%, max. 96%, \bar{X} = 77.5%). This colony was established with 58 specimens collected in Santana do Livramento municipality (30°53'27"S; 55°31'58"W), RS, Brazil. The insects were fed weekly on blood of Swiss mice on a free access basis.

Feeding and defecation patterns - A group of 30 nymphs, and eggs (F1) were selected according to their different stages. These nymphs were fed weekly until their ecdysis. After the ecdysis or egg hatching, all specimens were submitted to a starvation period (SP). The SP was standardized, for nymphs (n = 15 per instar) and adults (n = 15 per sex), in a pilot experiment, carried out in order to assess the elapsed time for the majority (> 50%) of the specimens to start feeding not longer than 20 min after the blood source has been offered. Thus, for the first, and second nymphal stages (N1, N2) the SP was standardized respectively in 7, 15, and in 20, days for the third, fourth and fifth nymphal stages (N3, N4, N5). For males and females the SP was standardized in 20 and 15 days, respectively. Then, at least 30 specimens of each instar were randomly picked up from the stock of insects mentioned above. Each individual was kept in a circular plastic container, with a radius of 5 cm, and 15 cm high. Filter paper was used to cover the inner surface of the container. The mouse anesthetized intramuscularly with ketamin in the dosage of 0.35 mg/kg of body weight and immobilized in a nylon web was placed into the container. The elapsed time for the insect to start feeding, the duration of feeding, and the elapsed time between the end of feeding and defecation were registered. Observations of insect movements after feeding and the distance between the feeding source and defecation places were recorded.

Resistance to starvation - For these studies, we essentially followed the protocol as established by Costa and Jurberg (1989), Jurberg and Costa (1989) and Costa and Marchon-Silva (1998). Thirty eggs and 30 nymphs (F1) were grouped according to their stages. These insects were observed daily until ecdysis or hatching. Afterwards, the insects were kept in plastic containers of 15 cm high with a quadrangular base of 8 x 8 cm with perforated lid and containing folded filter paper inside (10 in-

sects per container). In this experiment, the period of starvation resistance of the insects, after the ecdysis or hatching, was noted until their death.

RESULTS

Feeding and defecation patterns - For the nymphs, N4 took the longest time to begin feeding, 01'43" in average. Males and females spent an average of 02'49" and 03'23", respectively, to initiate feeding and the N1 required the shortest time (\bar{X} = 21"). The N5 seems to present the greatest nutritional avidity, since they allied a short time to begin feeding (\bar{X} = 28") and the longest average in time (\bar{X} = 35'15") of duration of feeding. In spite of the females having delayed to accept the feeding (\bar{X} = 3'23") they spent the second longest average of duration of feeding (\bar{X} = 23'29") (Fig. 1).

As depicted in Fig. 2, and Table I, females showed among all analyzed developmental stages the reduced elapsed time average (01'19") for defecation after the blood meal. Out of 30 females analyzed, 25 defecated in less than 10 min. A higher percentage (53.3%) of the females defecated in less than 1 min after the end of feeding, without leaving the bit site. Nine of them defecated during feeding and eight of them defecated twice during the feeding. One female defecated three times during feeding and once more within 40 sec after the end of feeding. After standardized post-ecdysis starvation, the number of insects that defecated during the feeding time and at different intervals after the first feeding was determined (Fig. 2).

Both Fig. 2 and Table I concur that the N5 presented a high rate of defecation shortly after feeding. The males

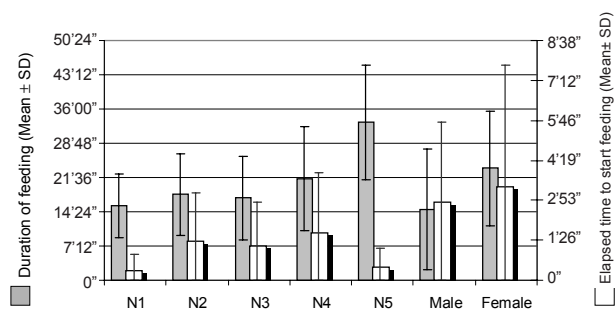


Fig. 1: elapsed time to begin feeding and duration of feeding of *Triatoma rubrovaria*.

TABLE I

Elapsed time between the end of feeding and defecation for *Triatoma rubrovaria* specimens, which defecated in less than 10 min

	N1	N2	N3	N4	N5	Male	Female
Pre-established starvation period after the blood meal	7	15	20	20	20	20	20
Number of specimens which defecate in less of 10 min	3/30	29/32	20/33	26/30	25/30	18/31	25/30
\bar{X}	02'48"	02'07"	03'12"	02'45"	02'03"	04'17"	01'19"
S	04'33"	02'16"	02'20"	02'31"	02'36"	03'22"	02'17"
S ²	39'34"	05:07'18"	05:28'00"	06:20'17"	06:36'24"	11:21'29"	05:13'25"
Max.	08'03"	06'37"	07'09"	10'00"	08'56"	09'43"	09'08"
Min.	00"	00"	00"	03"	00"	00"	00"

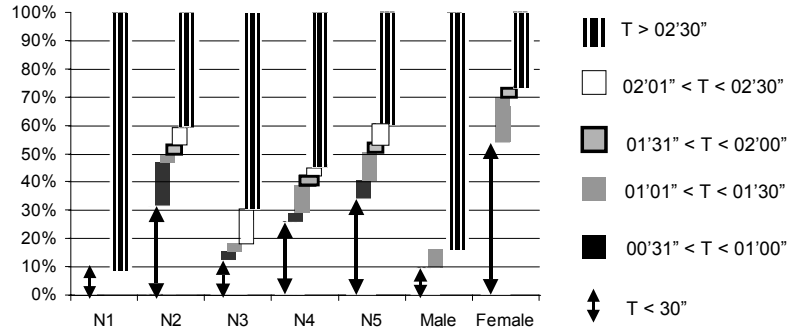


Fig. 2: elapsed time between the end of feeding and defecation (T) of *Triatoma rubrovaria*.

presented a low rate of defecation in less than 1 min, as it is shown in the Fig. 2. Most of defecation delivered by the males occurred mainly between 2'20" and 10'.

From 58 defecations recorded for all stages and in less than 1 min, in 40 cases (69%) the feces were deposited less than 3 cm from the bite site. On the other hand, of the 38 defecations recorded between 1 min and 2.5 min, only nine (23.7%) were deposited less than 3 cm from the bite site.

Resistance to starvation - It is shown in Fig. 3, that the average resistance to fasting during the nymphal stage yielded an ascending curve from the N1 to N5. The averages of resistance to starvation of the N1 and N5 were respectively 48.1 and 179.1 days, and for males and females were 70.5 and 68 days, respectively.

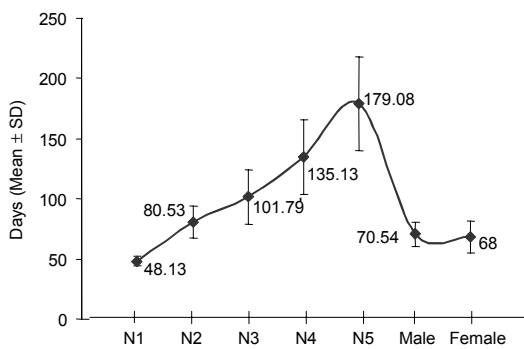


Fig. 3: resistance to starvation (in days) of *Triatoma rubrovaria*.

DISCUSSION

Feeding and defecation patterns - In our present investigation, the results showed that the adults of *T. rubrovaria* took more time to initiate feeding when compared to the nymphs. This correlation was not observed for other triatomine species, such as *Triatoma dimidiata* (Latreille, 1811), *T. infestans*, and *R. prolixus* (Zeledon et al. 1977).

Soares et al. (2000) carried out studies on biological parameters of *T. brasiliensis* Neiva, 1911 and *T. pseudomaculata* Corrêa & Espinola, 1964 associated to their epidemiological importance as vectors of *T. cruzi*. Both species spent a significantly longer time to feed than *T.*

rubrovaria, in all stages. For example, for *T. rubrovaria*, the longest average was recorded for N5 taking 33'15" to feed. In this same stage, *T. brasiliensis* and *T. pseudomaculata* presented a mean of 42'00" and 50'33", respectively.

Wood (1951) demonstrated that, in general, North American species such as *Triatoma protracta* (Ulher 1894), *Triatoma rubida* (Ulher, 1894) and *Paratriatoma hirsuta* Barber, 1938, did not defecate after biting in an elapsed time effective to the chagasic transmission to man. On the other hand, Dias (1956) showed that some of the most important vectors in South America: *Rhodnius prolixus* Stal, 1859, *T. infestans*, *Panstrongylus megistus* (Burmeister, 1835) and *T. sordida* (Stal, 1859) defecated shortly after feeding. This showed a defecation pattern conducive to Chagas transmission to man. An exception among South American triatomines was *T. vitticeps* (Stal, 1859), which required more time to defecate. Later, Gonçalves et al. (1988) have confirmed this trait for *T. vitticeps*.

Based on the results obtained in this investigation, in the most cases we found that elapsed more than 1 min following feeding, the insects had already moved more than 3 cm from the bite site. Thus, we conclude that *T. cruzi* transmission may occur when the insect defecates either during or less than 1 min after feeding. Under these circumstances, it appears that 53.3% of the observed females (Fig. 2) would present vectorial transmission risks at the time they bite. Our results are in accordance with the observations noted by Zeledon et al. (1977) for *T. dimidiata*, where they showed that females and the N5 of this species defecate quickly and emitted more feces after feeding than did the males and the other nymphal stages.

Table II shows the defecation patterns for males and females reported by several authors for various species during the blood meal or in less than 1 min after the feeding. Accordingly, it was found that the females of *T. rubrovaria* demonstrate defecation rates similar to those obtained for *T. infestans* (Dias 1956, Zeledon et al. 1977) and for *T. brasiliensis*, and *T. pseudomaculata* (Soares et al. 2000). It is important to emphasize that according to the Brazilian Health Foundation (Funasa), in RS, the records of domiciliary positivity for *T. rubrovaria* refer to capture and notification of adult specimens (Almeida et al. 2000).

TABLE II

Comparative defecation rates, reported by several authors, for various triatomine species, which defecated during the blood meal or in less than 1 min after the feeding

Species	Blood source	Male (%)	Female (%)	Author
<i>T. rubrovaria</i>	Mice	9.7	53.3	This paper
<i>T. brasiliensis</i>	Mice	56 ^a	Soares et al. (2000)	
<i>T. pseudomaculata</i>	Mice	50 ^a	Soares et al. (2000)	
<i>T. sordida</i>	Bird	40 < X < 60	80 < X < 100	Crocco & Catalá (1996)
<i>R. prolixus</i>	Mice	40 < X < 50	70 < X < 80	Zeledon et al. (1977)
<i>T. infestans</i>	Mice	20 < X < 30	30 < X < 40	Zeledon et al. (1977)
<i>T. dimidiata</i>	Mice	0 < X < 10	20 < X < 30	Zeledon et al. (1977)
<i>R. prolixus</i>	Bird	50x	62 x	Dias (1956)
<i>T. infestans</i>	Bird	44.4	54.4	Dias (1956)
<i>R. neglectus</i>	Bird	50 x	12 x	Dias (1956)
<i>P. megistus</i>	Bird	0 x	40 x	Dias (1956)
<i>T. sordida</i>	Bird	23.1	^b x	Dias (1956)

a: no specification about the sex; b: without information; *T.* *Triatoma*; *R.* *Rhodnius*; *P.* *Panstrongylus*

TABLE III

Comparative starvation resistance averages (in days) for different triatomine species, reported by several authors

Species	Nymphs					Adults		Temp. (°C)	Blood source	Author
	N1	N2	N3	N4	N5	Male	Female			
<i>T. rubrovaria</i>	48.1	80.5	101.7	135.1	179	70.5	68.0	Environmental, RJ	Mice	This paper
<i>T. rubrofasciata</i>	21.6	24.2	46.8	77.9	101.5	51.4 ^a		Environmental, RJ	Rat	Cortez & Gonçalves (1998)
<i>T. brasiliensis</i> ^c	35.5	40	50.5	67.9	121.1	37.1 ^a		Environmental, RJ	Mice	Costa & Marchon-Silva (1998)
<i>T. vitticeps</i>	37	91	136	177	180	63	58	Environmental, RJ	Mice	Gonçalves et al. (1989)
<i>T. rubrovaria</i>	40.9	81.1	91.1	117	133	78.8	74.8	25	Bird	Silva (1985)
<i>T. rubrovaria</i>	20.9	52.8	67.2	83.1	88.9	54.4	57.8	30	Bird	Silva (1985)
<i>T. sordida</i>	46.7	72.2	118	176.7	217.8	54.9	63.9	25	Mice	Juarez & Silva (1982)
<i>T. infestans</i>	60.2	49.4	- ^b	86.3	76.4	48.8 ^a		24-28	Bird	Perlowagora-Szumlewicz (1969)

a: no specification about the sex; b: without information; *T.* *Triatoma*; c: "brasiliensis" population

Resistance to starvation - In this investigation, the results obtained for resistance to starvation were similar to the results obtained by Silva (1985) for the same species, but fed on bird (*G. gallus*) and kept at 25°C. In both studies, the nymphal stages showed an increasing curve from the N1 to N5 at about the starvation resistance. Also the results suggest that males are slightly more resistant to starvation than the females. The comparative results of starvation resistance for several species of triatomines reported by other authors are shown in Table III.

Concerning the features studied, *T. rubrovaria* presented biological characteristics comparable to some important Chagas disease vectors, that may favor the transmission of *T. cruzi* to man. Thus, it must be kept under constant entomological surveillance. It should be emphasized that the results of the investigation presented here were carried out utilizing insects collected in one municipality from RS. Almeida et al. (2002b) showed significant phenotypic differences among *T. rubrovaria* populations from different RS municipalities. The comparative study of the bionomic characteristics among different populations could help us to better clarify the vectorial potentiality of *T. rubrovaria* in RS.

ACKNOWLEDGEMENT

To Dr Terry V Mc Intyre (Centro Universitário de Barra Mansa) and Dr Pradeep Ghosh (National Institutes of Health) for critically reading the manuscript, and for helpful suggestions.

REFERENCES

- Almeida CE, Duarte R, Pacheco RS, Costa J 2002a. *Triatoma rubrovaria* (Blanchard, 1843) (Hemiptera-Reduviidae-Triatominae) II: Trophic resources and ecological observations of five populations collected in the State of Rio Grande do Sul, Brazil. *Mem Inst Oswaldo Cruz* 97: 1127-1131.
- Almeida CE, Pacheco RS, Noireau F, Costa J 2002b. *Triatoma rubrovaria* (Blanchard, 1843) (Hemiptera-Reduviidae-Triatominae) I: Isozymatic and chromatic patterns of five populations collected in the State of Rio Grande do Sul, Brazil. *Mem Inst Oswaldo Cruz* 97: 829-834.
- Almeida CE, Vinhaes MC, Almeida JR, Silveira AC, Costa J 2000. Monitoring the domiciliary and peridomiciliary invasion process of *Triatoma rubrovaria* in the State of Rio Grande do Sul, Brazil. *Mem Inst Oswaldo Cruz* 95: 761-768.
- Cortez MGR, Gonçalves TCM 1998. Resistance to starvation of *Triatoma rubrofasciata* (De Greer, 1773) under laboratory conditions (Hemiptera: Reduviidae: Triatominae). *Mem Inst Oswaldo Cruz* 93: 549-554.

- Costa J 1999. The synanthropic process of Chagas disease vectors in Brazil, with special attention to *Triatoma brasiliensis* Neiva, 1911 (Hemiptera, Reduviidae, Triatominae) population, genetical, ecological, and epidemiological aspects. *Mem Inst Oswaldo Cruz* 94 (Suppl. 1): 239-241.
- Costa J, Marchon-Silva V 1998. Período de intermuda e resistência ao jejum de diferentes populações de *Triatoma brasiliensis* Neiva, 1911 (Hemiptera, Reduviidae, Triatominae). *Entomol Vect* 5: 23-34.
- Costa JM, Jurberg J 1989. Estudos sobre a resistência ao jejum e aspectos nutricionais de *Cavernicola lenti* Barrett & Arias, 1985 (Hemiptera, Reduviidae, Triatominae). *Mem Inst Oswaldo Cruz* 84: 129-137.
- Costa JM, Perondini ALP 1973. Resistência do *Triatoma brasiliensis* ao jejum. *Rev Saúde Pública* 7: 207-217.
- Crocco LB, Catala SS 1996. Feeding and defecation patterns in *Triatoma sordida*. *Mem Inst Oswaldo Cruz* 91: 409-413.
- Dias E 1956. Observações sobre a eliminação de dejeções e tempo de sucção em alguns triatomíneos sul-americanos. *Mem Inst Oswaldo Cruz* 54: 115-124.
- Gonçalves TC, Victorio VM, Jurberg J, Cunha V 1988. Biologia de *Triatoma vitticeps* (Stal, 1859) (Hemiptera: Reduviidae: Triatominae) em condições de laboratório. I. Ciclo evolutivo. *Mem Inst Oswaldo Cruz* 83: 519-523.
- Gonçalves TC, Victorio VM, Jurberg J, Cunha V 1989. Biologia de *Triatoma vitticeps* (Stal, 1859) (Hemiptera: Reduviidae: Triatominae) em condições de laboratório. II. Resistência ao jejum. *Mem Inst Oswaldo Cruz* 84: 131-134.
- Juarez E, Silva EPC 1982. Comportamento de *Triatoma sordida* em condições de laboratório. *Rev Saúde Pública* 16: 1-36.
- Jurberg J, Costa JM 1989. Estudos sobre a resistência ao jejum e aspectos nutricionais de *Triatoma lecticularia* (Stal, 1859) (Hemiptera, Reduviidae, Triatominae). *Mem Inst Oswaldo Cruz* 84: 393-399.
- Lent H 1942. Estudos sobre os triatomíneos do Estado do Rio Grande do Sul, com descrição de uma espécie nova. *Rev Bras Biol* 2: 219-231.
- Pellegrino J 1952. Observações sobre a resistência do *Triatoma infestans* ao jejum. *Rev Bras Biol* 12: 317-320.
- Perlowagora-Szumlewicz A 1954. A eficácia do expurgo domiciliário com hexaclorociclohexana no controle do vetor da doença de Chagas (a importância de alguns caracteres biológicos dos triatomíneos no planejamento do ciclo de aplicação do inseticida). *Rev Bras Malariol Doen Trop* 6: 63-100.
- Perlowagora-Szumlewicz A 1969. Estudos sobre a biologia do *Triatoma infestans*, o principal da doença de Chagas no Brasil (importância de algumas de suas características biológicas no planejamento de esquemas de combates a esse vetor). *Rev Bras Malariol Doen Trop* 21: 117-159.
- Salvatella R, Rosa R, Basmadjian Y, Puime A, Calegari L, Guerrero J, Martinez M, Mendaro G, Briano D, Montero C, Wisnivesky-Colli C. 1995. Ecology of *Triatoma rubrovaria* (Hemiptera, Triatominae) in wild and peridomestic environments of Uruguay. *Mem Inst Oswaldo Cruz* 90: 325-328.
- Silva IG 1985. Influência da temperatura na biologia de Triatomíneos. I. *Triatoma rubrovaria* (Blanchad, 1843) (Hemiptera, Reduviidae). *Rev Goiana Med* 31: 1-37.
- Silva IG, Silva HHG 1993. Suscetibilidade de 11 espécies de triatomíneos (Hemiptera, Reduviidae) à cepa Y de *Trypanosoma cruzi* (Kinetoplastida, Trypanosomatidae). *Rev Bras Ent* 37: 459-463.
- Soares RP, Evangelista LG, Laranja LS, Diotaiuti L 2000. Population dynamics and feeding behavior of *Triatoma brasiliensis* and *Triatoma pseudomaculata*, main vectors of Chagas disease in Northeastern Brazil. *Mem Inst Oswaldo Cruz* 95: 151-155.
- Vinhaes MC, Dias JCP 2000. Doença de Chagas no Brasil. *Cad Saúde Pública* 16 (Supl. 2): 7-12.
- Wood SF 1951. Importance of feeding and defecation times of insect vectors in transmission of Chagas diseases. *J Economic Entomol* 44: 52-54.
- Zeledón R, Alvarado R, Jirón LF 1977. Observations on the feeding and defecation patterns of three Triatominae species (Hemiptera: Reduviidae). *Acta Trop* 34: 65-77.
- Zeledón R, Guardia VM, Zuniga A, Swartzwelder JC 1970. Biology and ethology of *Triatoma dimidiata* (Latreille, 1811). I. Life cycle, amount of blood ingested, resistance to starvation, and size of adults. *J Med Entomol* 7: 313-319.

