

## SHORT COMMUNICATION

***Mycobacterium bovis* identification by a molecular method from post-mortem inspected cattle obtained in abattoirs of Mato Grosso do Sul, Brazil**Cristina Pires de Araújo<sup>++</sup>, Clarice Queico Fugimura Leite, Karina Andrade de Prince, Klaudia dos Santos Gonçalves Jorge\*, Ana Luiza Alves Rosa Osório\*<sup>+/+</sup>

Faculdade de Ciências Farmacêuticas, Universidade Estadual Paulista Júlio de Mesquita Filho, Araraquara, SP, Brasil

\*Universidade Federal de Mato Grosso do Sul, Cidade Universitária, 79070-900 Campo Grande, MS, Brasil

*The presence of Mycobacterium bovis in bovine carcasses with lesions suggestive of tuberculosis was evaluated. Seventy-two carcass samples were selected during slaughter inspection procedures in abattoirs in the state of Mato Grosso do Sul, Brazil. Seventeen (23.6%) of samples showed colonies suggestive of mycobacteria that were confirmed to be acid-fast bacilli by Ziehl-Neelsen staining. Polymerase chain reaction (PCR) using primers specific for M. bovis identified M. bovis in 13 (76.5%) isolates. The PCR-restriction enzyme pattern analysis using gene encoding for the 65-kDa protein and two restriction enzymes identified the remaining four isolates that were represented by two M. tuberculosis complex and two nontuberculous mycobacteria. The results are indicative of infection of slaughter cattle by M. bovis and other mycobacteria in the state of Mato Grosso do Sul.*

Key words: *Mycobacterium bovis* - nontuberculous mycobacteria - polymerase chain reaction - PCR-restriction enzyme pattern analysis - cattle - post-mortem inspection - abattoirs

Tuberculosis plays a central role in public health and animal health because of its severity in humans, in addition to the economic losses related to affected herds (Rodriguez et al. 1999). According to WHO (1993), infection with *Mycobacterium bovis* is responsible for about 5% of human tuberculosis (Tb) cases in Brazil, suggesting the importance of better control of transmission from cattle to man (Parreiras et al. 2004). In Brazil, the prevalence of the disease in bovines was estimated at 1.3% from 1989 to 1998 (Brasil 2003). In the southwestern state of Mato Grosso do Sul, from 1974 to 1979, Schenk and Schenk (1982) observed prevalence of lesions suggestive of bovine Tb in 0.2% of samples collected from slaughterhouses. Post-mortem examination, carried out by sanitary inspection services, provides only a presumptive diagnosis, since the examination constitutes a simple macroscopic analysis of the lesions encountered (Brasil 2001). In this sense, the microbiological methods as diagnostic procedures should complement post-mortem inspection (Andrade et al. 1991, Corner 1994, Liébana et al. 1995, Pinto et al. 2002).

Due to dysgonic and very slow growth, the identification of *M. bovis* by conventional biochemical methods is cumbersome and time-consuming. Direct use of polymerase

chain reaction (PCR) on biological samples enables diagnosis to be reached within 48 h, but the presence of inhibitors in tissue samples could interfere with its performance (De Wit et al. 1990, Clarridge et al. 1993, Folgueira et al. 1993, Nolte et al. 1993, Liébana et al. 1995, Kirshner et al. 1996, Mangiapan et al. 1996). In this sense PCR from culture is more sensible (Sakamoto 1997). In 1995, Rodriguez et al. described a pair of primers for the amplification of a 500-bp DNA fragment specific for *M. bovis*, that was applied to study *M. bovis* infection in cattle (Sakamoto 1997, Rodriguez et al. 1999, Sechi et al. 2000). The genotypic detection of the gene encoding for the 65-kDa protein using two restriction enzymes by PCR-restriction enzyme pattern analysis (PRA) (Telenti et al. 1993) is a reliable assay to identify species that belong to the *Mycobacterium* genus, although this technique fails to differentiate *M. bovis* from *M. tuberculosis*. Due to a few number of *M. bovis* research in Brazil, mainly in Mato Grosso do Sul, the aim of this study was to carry out the molecular identification of acid-fast bacilli isolated from tissue samples taken from carcasses of bovines during post-mortem inspection.

A total of 72 samples of tuberculosis-suspected lesions were collected from five slaughterhouses in Mato Grosso do Sul from May to November 2003. Lymph nodes lesions and lung fragments were extracted from the carcasses during the slaughter inspection carried out by veterinarians of Federal Inspection Service. All samples were kept in ice on their way to the laboratory. The pathological samples were initially decontaminated with the Petroff method (Brasil 1994) and cultured on Stonebrink medium for 3 months at 37°C. Colonies positive for acid-fast bacilli (AFB) by Ziehl-Neelsen technique were sub-

Financial support: Fundect

<sup>+</sup>Corresponding author. E-mail: analudmv@nin.ufms.br

<sup>++</sup>Capes fellowship recipient

Received 15 December 2004

Accepted 27 September 2005

mitted to molecular identification by PCR (Rodriguez et al. 1999), and PRA (Telenti et al. 1993). Briefly, for PCR identification, the mycobacterial DNA was extracted by three time boiling/freezing proceeding and amplified using the primers Jb21 (5'-TCGTCCGCTGATGCAAGTGC-3') and Jb22 (5'-CGTCCGCTGACCTCAAGAAG-3') described by Rodriguez et al. (1995). For PRA, primers for hsp65 gene Tb11 (5'-ACCAACGATGGTGTGTCCAT-3') and Tb12 (5'-CTTGTCGAACCGCATAACCT-3') were used for amplification of four samples negative for PCR. The amplicons were fragmented by the restriction enzymes *BstE* II and *Hae* III. The length of restriction fragments were estimated with the computer software ImageMaster VDS, version 3.0 for Windows 95,NT (Pharmacia Biotech), and the patterns obtained were evaluated using the Prasite (<http://app.chuv.ch/prasite/index.html>).

Mycobacteria were isolated from 17 (23.6%) of 72 lesion samples. All the isolates were confirmed as being AFB. Among the isolates, by PCR, 500-bp fragments suggestive of *M. bovis* were present in 13 (76.4%) samples (Fig. 1). From four isolates (23.6%) that lacked the 500-bp, PRA identified two as *M. tuberculosis* complex (MTC), and two as nontuberculous mycobacteria (*M. fortuitum* type 1) (Fig. 2, Table).

These results demonstrate that two isolates identified as MTC by PRA may also be *M. bovis* that did not amplify by species specific primers (JB21/JB22). In 121 culture samples from Argentina, México, and Colombia, Rodriguez et al. (1999) obtained 100% of data concordance between the microbiological method and PCR with primers JB21/JB22. However, Sechi et al. (2000) found that in 13.3% (4/30) of samples *M. bovis* failed to be identified when PCR was conducted with the same primers. By using the primers internalized in the insertion sequence IS6110, Sechi et al. (2000) confirmed that the isolates that remained uni-

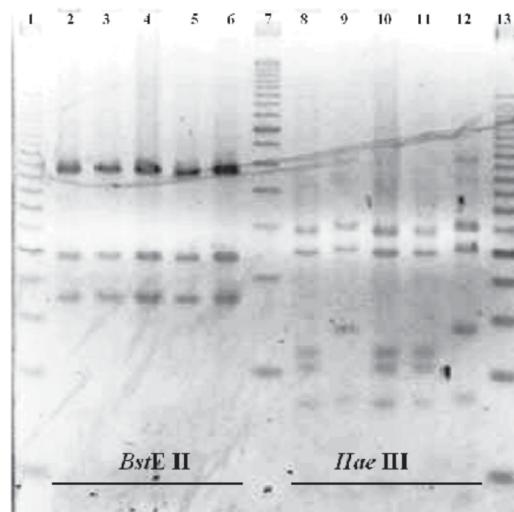


Fig. 2: polymerase chain reaction (PCR)-restriction enzyme pattern analysis genotype of four mycobacteria strains that did not amplified with PCR using primers Jb21 and Jb22. Columns 2, 8: standard *Mycobacterium fortuitum* type 1; columns 3, 6, 9, 12: *M. tuberculosis* complex; columns 4, 5, 10, 11: *M. fortuitum* type 1; columns 1, 13: ladder 25 bp; column 7: ladder 50 bp.

TABLE

Polymerase chain reaction (PCR)-restriction enzyme pattern analysis genotype of four mycobacteria strains that did not amplified with PCR using primers Jb21 and Jb22

<i>Mycobacterium</i>	<i>BstE</i> II	<i>Hae</i> III
<i>M. tuberculosis</i> complex	235/115/85	150/125/70
<i>M. tuberculosis</i> complex	235/115/85	150/125/70
<i>M. fortuitum</i> type 1	235/115/85	145/120/60/55
<i>M. fortuitum</i> type 1	235/115/85	145/120/60/55

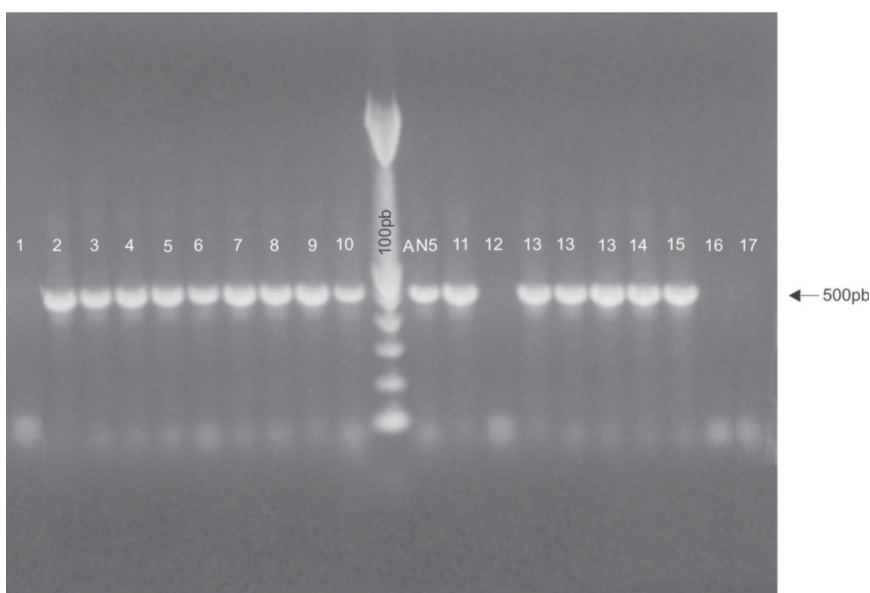


Fig. 1: band profile of polymerase chain reaction assay of material from acid-fast bacilli colonies. Central columns: 100-bp marker and AN-5 *Mycobacterium bovis* standard sample; columns 2, 3, 4, 5, 6, 7, 8, 9, 10, 11, 13, 14, 15 amplified 500-bp fragment; columns 1, 12, 16, 17 did not amplify.

identified by JB21/JB22 belonged to the MTC. These data can justify our negative results in 11.8% (2/17) of the isolates. Possibly, these isolates lacked a target for primers JB21/JB22. The use of a single molecular technique can produce false negative results, hence the need for applying more than one type of technique. Leite et al. (2003), using culture and identification by PCR and RFLP-PCR, found 68.2% of positivity for *M. bovis* in pathological bovine and bubaline samples.

The efficiency of the culture used as a first criterion for *M. bovis* identification was low (23.6%). One possible explanation is that some tissues may contain only a few live bacteria and even a short delay in getting tissues to the laboratory diagnosis might reduce chances for a successful bacterial isolation. Another reason is the sensitivity of the mycobacteria to the sodium hydroxide used in the method of Petroff (CPZ 1988, Miller et al. 2002).

The results show that the PCR method used in the present work is quick and reproductive, reliable for the study of slow-growing mycobacteria, particularly in cultures where the small number of bacilli hinders identification by classical methods. Although the presence of *M. bovis* was confirmed in only 13 out of 72 samples, the results indicate that the slaughter cattle from Mato Grosso do Sul is a source of infection by *M. bovis* that can be accounted for the disease in other animal species as well as for the zoonoses occurring in this Brazilian state.

The additional *Mycobacterium* specie identified from pathologic specimens, *M. fortuitum* is considered pathogenic and cause a variety of disease in humans (Wollinsky 1992). In a national surveillance of mycobacterioses, from 500 cultures of nontuberculous mycobacteria, *M. fortuitum* was identified in 10.8% of the cases and represented one of the most frequently identified species (Barretos & Campos 2002).

In conclusion, the presence of *M. bovis* and other potential pathogenic mycobacteria in livestock tissue, suggests that humans may be exposed to these organisms as result of contact and ingestion.

#### REFERENCES

- Andrade GB, Riet-Correa F, Mielke PV, Méndez MC, Schild AL 1991. Estudo histológico e isolamento de micobactérias de lesões similares a tuberculose em bovinos no Rio Grande do Sul. *Pesq Vet Bras* 11: 81-86.
- Barretos AMW, Campos CED 2002. Micobactérias não tuberculosas no Brasil. *Bol Pneumol Sanit* 8: 23-31.
- Brasil 1994. *Manual de Bacteriologia da Tuberculose*, Centro de Referência Professor Hélio Fraga, Fundação Nacional de Saúde, Ministério da Saúde, Rio de Janeiro, 114 pp.
- Brasil 2001. Ministério da Agricultura, Pecuária e Abastecimento. Regulamento Técnico do Programa Nacional de Controle e Erradicação da Brucelose e Tuberculose, Instrução normativa DAS 6/2001.
- Brasil 2003. *Manual Técnico do Programa Nacional de Controle e Erradicação da Brucelose e Tuberculose*, Ministério da Saúde, Rio de Janeiro, 121 pp.
- Clarridge JE, Shawar RM, Shinnick TM, Plikaytis BB 1993. Large-scale use of polymerase chain reaction for detection of *Mycobacterium tuberculosis* in a routine mycobacteriology laboratory. *J Clin Microbiol* 31: 2049-2056.
- Corner LA 1994. Post-mortem diagnosis of *Mycobacterium bovis* infection in cattle. *Vet Microbiol* 40: 53-63.
- CPZ-Centro Panamericano de Zoonosis 1988. *Manual de Normas y Procedimientos Técnicos para la Bacteriología de la Tuberculosis III. Sensibilidad del Mycobacterium tuberculosis a las Drogas. La Identificación de Micobactérias*, Buenos Aires, 29 pp.
- De Wit D, Steyn L, Shoemaker S, Sogin M 1990. Direct detection of *Mycobacterium tuberculosis* in clinical specimens by DNA amplification. *J Clin Microbiol* 28: 2437-2441.
- Folgueira L, Delgado R, Palenque E, Noruega AR 1993. Detection of *Mycobacterium tuberculosis* DNA in clinical samples by using a polymerase reaction. *J Clin Microbiol* 31: 1019-1021.
- Kirschner P, Rosenau J, Springer B, Teschner K, Feldmann K, Bottger EC 1996. Diagnosis of mycobacterial infections by nucleic acid amplification: 18-month prospective study. *J Clin Microbiol* 34: 304-312.
- Leite CQF, Anno IS, Leite RSA, Roxo E, Morlock GL, Cooksey RC 2003. Isolation and identification of mycobacteria from livestock specimens and milk obtained in Brazil. *Mem Inst Oswaldo Cruz* 98: 319-323.
- Liébana E, Aranaz A, Mateos A, Vilafranca M, Gómez-Mampaso E, Tercero JC, Alemany J, Suarez G, Domingo M, Dominguez L 1995. Simple and rapid detection of *Mycobacterium tuberculosis* complex organisms in bovine tissue samples by PCR. *Eur J Clin Microbiol Infect Dis* 33: 33-36.
- Mangiapan G, Vokurka M, Shouls L, Cadranel J, Lecossier D, Van Embden J, Hance AJ 1996. Sequence capture-PCR improves detection of mycobacterial DNA in clinical specimens. *J Clinical Microbiol* 34: 1209-1215.
- Miller JM, Jenny AL, Payeur JB 2002. Polymerase chain reaction detection of *Mycobacterium tuberculosis* complex and *Mycobacterium avium* organisms in formalin-fixed tissues from culture-negative ruminants. *Vet Microbiol* 87: 15-23.
- Nolte FS, Metchock B, McGowan Jr JE, Edwards A, Okwumabua O, Thurmond C, Mitchell PS, Plikaytis B, Shinnick T 1993. Direct detection of *Mycobacterium tuberculosis* in sputum by polymerase chain reaction and DNA hybridization. *J Clin Microbiol* 31: 1777-1782.
- Parreiras PM, Lobato FC, Alencar AP, Figueiredo T, Gomes HM, Boechat N, Lage AP, Assis RA, Pereira MA, Souza PR, Mota PM, Suffys PN 2004. Drug susceptibility of Brazilian strains of *Mycobacterium bovis* using traditional and molecular techniques. *Mem Inst Oswaldo Cruz* 99: 749-752.
- Pinto PSA, Faria JE, Vitoria MIV, Bevilacqua PD 2002. Exame microbiológico da tuberculose como subsídio à inspeção post-mortem de bovinos. *Rev Bras Saúde e Prod Anim* 3: 10-15.
- Rodriguez JG, Fissanoti JC, Del Portillo P, Patarroyo ME, Romano MI, Cataldi A 1999. Amplification of a 500-base-pair fragment from cultured isolates of *Mycobacterium bovis*. *Eur J Clin Microbiol Infect Dis* 37: 2330-2332.
- Rodriguez JG, Mejia GA, Del Portillo P, Patarroyo ME, Murillo LA 1995. Species-specific identification of *Mycobacterium bovis* by PCR. *Microbiology* 141: 2131-2138.
- Sakamoto SM 1997. *Deteção e Identificação de Mycobacte-*

- rium bovis* pela Reação de Polimerase em Cadeia (PCR), MSc Thesis, FMVZ, São Paulo, 43 pp.
- Schenk MAM, Schenck JAP 1982. Prevalência de tuberculose, cisticercose e hidatidose em bovinos abatidos nos matadouros frigoríficos do estado de Mato Grosso do Sul, Brasil (1974/1979). *A Hora Veterinária* 1: 28-31.
- Sechi LA, Dupre I, Leori G, Fadda G, Zanetti S 2000. Distribution of a specific 500-base-pair fragment in *Mycobacterium bovis* isolates from Sardinian cattle. *J Clin Microbiol* 38: 3837-3839.
- Telenti A, Marchesi F, Balz M, Bally F, Bottger EC, Bodmer T 1993. Rapid identification of mycobacteria to the species level by polymerase chain reaction and restriction enzyme analysis. *J Clin Microbiol* 31: 175-178.
- WHO-World Health Organization 1993. Report of the WHO meeting of zoonotic tuberculosis (*Mycobacterium bovis*) Technical Note, Geneva, 27 pp.
- Wolinsky E 1992. Mycobacterial diseases other than tuberculosis. *Clin Infect Dis* 15: 1-12.