

Molecular identification of *Rickettsia felis* in ticks and fleas from an endemic area for Brazilian Spotted Fever

KA Oliveira, LS Oliveira, CCA Dias¹, A Silva Jr¹, MR Almeida¹, G Almada², DH Bouyer³, MAM Galvão⁴, CL Mafra/⁺

Laboratório de Bioquímica e Biologia Molecular de Agentes Infeciosos e Parasitários, Departamento de Bioquímica e Biologia Molecular, ¹Laboratório de Virologia Molecular Animal, Bioagro, Universidade Federal de Viçosa, 36570-000 Viçosa, MG, Brasil ²Vigilância Epidemiológica, Secretaria Estadual de Saúde, ES, Brasil ³Center for Biodefense and Emerging Infectious Diseases, University of Texas Medical Branch, Galveston, USA ⁴Laboratório de Epidemiologia Molecular, Escola de Nutrição, Universidade Federal de Ouro Preto, MG, Brasil

Rickettsioses are arthropod-borne diseases caused by parasites from the Order Rickettsiales. The most prevalent rickettsial disease in Brazil is Brazilian Spotted Fever (BSF). This work intends the molecular detection of those agents in ectoparasites from an endemic area of BSF in the state of Espírito Santo. A total of 502 ectoparasites, among them Amblyomma cajennense, Amblyomma dubitatum (A. cooperi), Rhipicephalus sanguineus, Anocentor nitens and Ctenocephalides felis, was collected from domestic animals and the environment and separated in 152 lots according to the origin. Rickettsia sp. was detected in pools of all collected species by amplification of 17kDa protein-encoding gene fragments. The products of PCR amplification of three samples were sequenced, and Rickettsia felis was identified in R. sanguineus and C. felis. These results confirm the presence of Rickettsia felis in areas previously known as endemic for BSF, disease caused by Rickettsia rickettsii. Moreover, they show the need of further studies for deeper knowledge of R. felis-spotted fever epidemiology and differentiation of these diseases in Brazil.

Key words: *Rickettsia felis* - *Rickettsia rickettsii* - *Ctenocephalides felis* - Brazilian Spotted Fever - *R. felis*-spotted fever - tick

Brazilian Spotted Fever (BSF) is the most prevalent rickettsial disease in Brazil (Lemos et al. 2001). The illness is caused by *Rickettsia rickettsii*, a bacterial organism belonging to the family Rickettsiaceae and to the Order Rickettsiales, whose members are intracellular mandatory microorganisms, many of them causing infections worldwide-distributed in humans and other vertebrate and invertebrate hosts. These organisms are classically transmitted to humans via arthropod vector bites. In Brazil, the tick *Amblyomma cajennense* is the main vector of *Rickettsia rickettsii* (Labruna et al. 2004) and reservoir of BSF (Aragão & Fonseca 1961, Figueiredo et al. 1999).

Rickettsia felis-spotted fever is caused by *R. felis*, whose main vector is the cat flea, *Ctenocephalides felis*. Once in this host, the pathogen is maintained by transovarial transmission with no lethal effect, which represents a factor of great importance for the epidemiology of this emerging rickettsiosis (Azad et al. 1992, Rolain et al. 2003).

Studies have demonstrated the presence of *R. felis* in Brazil by serology performed in human cases (Raoult et al. 2001) and *C. felis* infection confirmed by polymerase chain reaction (PCR) (Horta et al. 2006, Oliveira et al. 2002).

The objective of this work was the molecular detection of rickettsiae circulation in ectoparasites collected from domestic animals and from domestic environments,

following a BSF outbreak, in an endemic area of BSF. This study sought to contribute to a wider understanding and knowledge of the rickettsial diseases related to these agents in Brazil.

MATERIALS AND METHODS

Study area - The study began in November 2003, in the municipal district of Nova Venécia (18°43'38''S, 40°24'02''W), Northwestern of state of Espírito Santo, Brazil, which is considered an endemic area for BSF. Nova Venécia has an estimated population of 44,380 inhabitants (<http://www.ibge.gov.br>). From August 1st to October 31st 2003, 16 suspected cases of rickettsiosis and two confirmed cases by indirect immunofluorescence assay (IFA) for *R. rickettsii* (data supplied for Vigilance of Health Secretary, Espírito Santo, Brazil) were identified, as well as the occurrence of one death, in this municipal district. The majority of cases were concentrated in the rural community named Patrimônio do XV, with about 1,200 inhabitants.

Collection and preparation of material for analysis - A total of 502 ectoparasites (ticks and fleas) were collected from domestic animals (24 dogs and 5 horses) and from the natural environment, in the nymph and adult stages, as well as eggs laid in a controlled chamber. The ectoparasites were hand-picked from the animals, using tweezers when necessary. CO₂ traps were used to capture free-living ticks in sites detected as being the probable origin of infection, according to the epidemiologic inquiry, considering possible environments for contact between human and ticks and evidence for the presence of capybaras. The ectoparasites were separated in 152 lots according to the origin, and adult stages identified through a stereoscopic microscope using Araújo and

Financial support: Center of Biodefense and Emerging Infectious Diseases, University of Texas Medical Branch at Galveston, USA, CAPES, CNPq

+ Corresponding author: mafra@ufv.br

Received 5 October 2007

Accepted 20 March 2008

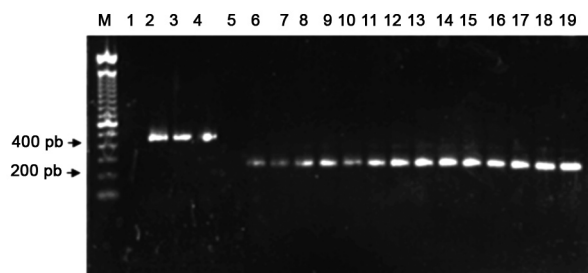
Fonseca's (1961) taxonomic keys for ticks and Linardi and Guimarães' keys (2000) for fleas. At the laboratory, the ectoparasites were kept in a BOD incubator, at 25°C for 2-5 days, for reactivation and multiplication of the rickettsial agents according to Hayes and Burgdorfer (1982), and stored at -20°C until nucleic acid extraction.

DNA extraction and PCR - After the surface sterilization by immersion in absolute ethanol for 10 min, the ectoparasites were washed in PBS, crushed in 200 µl of the same buffer, and the DNA extraction was performed using the method described by Billings et al. (1998). For the amplification of 434 bp-portion of the gene encoding *Rickettsia* genus-specific 17-kDa protein, the primers 17kD1 (5'- GCTCTTGCAACTTCTATGTT-3') and 17kD2 (5'-CATTGTTTCGTCAGGTTGGCG-3') described by Webb et al. (1990) were used, under the following conditions: an initial stage at 94°C for 3 min, 30 cycles at 95°C for 1 min, 50°C for 1 min, and 72°C for 2 min, followed by a step at 72°C for 5 min. The reactions were performed in 25 µl containing PCR 1X (Invitrogen™) buffer, 0.4 mM of each primer, 1 mM of MgCl₂, 0.05 mM of each dNTP, 1U of recombinant Taq DNA Polymerase (Invitrogen™), and 2 µl of DNA from each sample or 0.5 µl of purified *Rickettsia prowazekii* DNA for positive control. The amplifications were initially carried out in 30 pools, each containing about 5 lots of ectoparasites. After detecting the positive pools, they were separated and each lot was subjected to a new PCR to identify the infected lots. Nested-PCR was used for the negative samples in the first amplification, using 1 µl of the first reaction as template and the pair of genus-specific primers 17kN1 (5'- CATTACTTGTTTCTCAATTTCGGT-3') and 17kN2 (5'-GTTTTATTAGTGGTTACGTAA-3') described by Schriefer et al. (1994), to amplify an inner 232-pb region of the gene encoding the 17 kDa protein. The reagent concentrations and amplification conditions were the same as described on the first amplification reaction. The reaction products of PCR were visualized in 1% agarose gel.

Sequencing of PCR products - The PCR amplification products were cloned into the vector pCR® 2.1-TOPO® (Invitrogen™ TOPO® TA Cloning® Kit), following the manufacturer's protocol. Plasmid DNA extraction was performed using the High Pure Plasmid Isolation Kit (Roche Diagnostic), following the manufacturer's instructions. The generated nucleotide sequences were edited with CHROMAS (<http://www.mb.mahidol.ac.th/pub/chromas/chromas.htm>) and compared with the corresponding homologous sequences available through GenBank, using Discontiguous Mega Blast (<http://www.ncbi.nlm.nih.gov>).

RESULTS

Ticks and fleas were identified as *Amblyomma dubitatum* (*A. cooperi*), *A. cajennense*, *Rhipicephalus sanguineus*, *Anocentor nitens* and *C. felis*. In this study, 28 lots of ectoparasites contained *Rickettsia* DNA amplified by nested-PCR, from these lots two were positive in the first reaction and 26 were positive in the second reaction, using genus-specific primers (Table I). Figure shows the generated band patterns.



Result of PCR to detect *Rickettsia*, in 1% agarose gel. Lanes - M: 100 bp DNA ladder size marker; 1 to 4: products of first reaction; 1: negative control, 2: positive control, 3 and 4: lots 45 and 71, respectively; 5 to 19: products of second reaction, 5: negative control, 6: positive control, 7 to 19: lots 4, 10, 26, 31, 34, 35, 36, 38, 42, 44, 59, 63, and 65, respectively.

The sequencing of PCR amplification products of ectoparasite lots 45, 71 and 88 (Table I) was successful. The generated nucleotide sequences had greater similarity with *R. felis* sequences deposited in GenBank, and the sequence obtained from *R. sanguineus* lot (lot 88) showed 96% similarity to *R. felis*, whereas the sequences obtained from lots 45 and 71, both *C. felis*, showed 98% similarity to *R. felis* (Table II).

DISCUSSION

These results present a contribution to the initial understanding of rickettsial ecology in the studied area. The amplification of gene fragments encoding the 17kDa protein showed that *Rickettsia* spp. circulates among all the ectoparasite species collected in the studied area, confirming the role of different ectoparasites in the maintenance of these organisms.

The detection of *R. felis* in *R. sanguineus* and *C. felis* is corroborated by other studies carried out in Brazil (Galvão et al. 2003, 2006). Knowing that by IFA with specific antigens, the sera of patients with rickettsiosis during the outbreak showed a positive title for *R. rickettsii*, the presence of *R. felis* in ectoparasites from the studied area indicates the possibility of occurrence of *R. felis*-spotted fever, concomitant or not with BSF, in the studied area.

Some studies (Phillip et al. 1978, Oliveira et al. 2002, Horta et al. 2007) have indicated that at least two species of pathogenic rickettsia can be circulating in the endemic foci of BSF. Horta et al. (2007) found evidences of at least four *Rickettsia* species (*R. rickettsii*, *R. parkeri*, *R. felis* and *R. bellii*) in the studied areas (4 endemic and 1 non-endemic for BSF), however serological evidences of rickettsial infection in humans and/or animals were found for only two species: *R. rickettsii* and *R. parkeri*. These results suggest that some BSF cases occurred in endemic areas may have been caused by other rickettsiae rather than *R. rickettsii*, and being *R. rickettsii* the sole antigen regularly used in BSF serological diagnosis, some human cases of BSF due to other rickettsiae of this group have been wrongly identified as BSF in Brazil (Horta et al. 2007).

TABLE I
Ectoparasite lots that were positive for *Rickettsia* spp., using polymerase chain reaction, in Nova Venécia, state of the Espírito Santo, Brazil

Lot	Origin of ectoparasite	Species	Stages	Number of ectoparasites/lot
4	Dog	-	Eggs	ND
10	Dog	<i>Ctenocephalides felis</i>	Adult	7
26	Environment	<i>Amblyomma dubitatum</i> (<i>A. cooperi</i>)	Adult/male	4
31	Environment	-	Nymphs	5
34	Horses	-	Nymphs	4
35	Horses	<i>Anocentor nitens</i>	Adult/female	8
36	Horses	<i>Anocentor nitens</i>	Adult/female	4
38	Horses	<i>Amblyomma cajennense</i>	Adult/female	3
42	Environment	<i>Amblyomma dubitatum</i> (<i>A. cooperi</i>)	Adult/female	3
44	Environment	-	Nymphs	4
45	Dog	<i>Ctenocephalides felis</i>	Adult	8
59	Dog	<i>Rhipicephalus sanguineus</i>	Adult/female	4
63	Dog	<i>Rhipicephalus sanguineus</i>	Adult/male	10
65	Dog	<i>Rhipicephalus sanguineus</i>	Adult/female	2
69	Dog	<i>Ctenocephalides felis</i>	Adult	8
70	Dog	<i>Ctenocephalides felis</i>	Adult	8
71	Dog	<i>Ctenocephalides felis</i>	Adult	1
74	Horses	-	Nymphs	3
74	Horses	<i>Anocentor nitens</i>	Adult/male	2
85	Dog	<i>Rhipicephalus sanguineus</i>	Adult/male	3
87	Environment	<i>Amblyomma dubitatum</i> (<i>A. cooperi</i>)	Adult/male	3
88	Environment	<i>Rhipicephalus sanguineus</i>	Adult/female	3
88	Environment	-	Nymphs	4
98	Horses	<i>Amblyomma cajennense</i>	Adult/male	5
99	Horses	-	Nymphs	3
104	Environment	-	Nymphs	1
131	Dog	<i>Rhipicephalus sanguineus</i>	Adult/male	4
136	Dog	-	Eggs	ND
137	Dog	<i>Ctenocephalides felis</i>	Adult	1
152	Dog	-	Eggs	ND

ND: not determined.

TABLE II
Similarity analysis of nucleotide sequences from lots 45, 71 and 88 with *R. felis* sequences from GenBank, according to Discontiguous MegaBlast

Accession number at GenBank	Species	Similarity ^a	Vector (lot) ^b
CP 000053.1	<i>R. felis</i> URRWX Cal 2	98% (410/415)	<i>C. felis</i> (45)
DQ 102709.1	<i>R. felis</i> ssc50	98% (379/383)	<i>C. felis</i> (71)
DQ 102709.1	<i>R. felis</i> ssc50	96% (225/232)	<i>R. sanguineus</i> (88)

a: percentage of similarity calculated as identical bases/total bases; b: lot number according to Table I.

It is also known that the occurrence of cross-reaction between *R. rickettsii* and *R. felis* serology is common, as reported by Raoult et al. (2001). This fact could also explain the detection of *R. felis* in the studied area in this present work, where cases of rickettsiosis were diagnosed as BSF due to *R. rickettsii*, not excluding, however, the potential presence of this and/or other *Rickettsia* species in the analysed ectoparasites. It is important to point out that the patients' clinical diagnosis was not completely compatible with the BSF symptoms, therefore confirming the possibility of facing, in this area, a pathology of emerging character in Brazil - *R. felis*-spotted fever.

These results emphasize the need for more specific techniques to the diagnosis of rickettsiosis that will allow a better characterization of these diseases in Brazil, as well as the development of strategies more compatible with the real situation of the country.

ACKNOWLEDGEMENTS

To the employees from Vigilance of Health Secretary, Health Ministry, Marcelo Yoshito Wada, Marcelo Santalucia and Antônio Lima Neto; Augusto Marchon Zago and Maxwell Marchito de Freitas from Health Secretary of the state of Espírito Santo; Marllus Cavalcante from Municipal Health Sec-

retary of Nova Venécia; Marcelo Renan de Deus Santos and Gilberto Marcos Junior from the University Center of Vila Velha and Celso Eduardo de Souza of SUCEN/SP, for their assistance in obtaining the ectoparasites. To Dr. David H Walker from UTMB for partial financial support given for this project and for previous review.

REFERENCES

- Aragão HB, Fonseca F 1961. Notas de Ixodologia. VIII. Lista e chave para os representantes da fauna ixodológica brasileira. *Mem Inst Oswaldo Cruz* 59: 115-129.
- Azad AF, Sacci Jr JB, Nelson WM, Dasch GA, Schmidtman ET, Carl M 1992. Genetic characterization and transovarial transmission of a typhus-like rickettsia found in cat fleas. *Proc Natl Acad Sci U S A* 89: 43-46.
- Billings AN, Yu X., Teel PD, Walker DH 1998. Detection of a spotted fever group rickettsia in *Amblyomma cajennense* (Acari: Ixodidae) in South Texas. *J Med Entomol* 35: 474-478.
- Figueiredo LTM, Badra SJ, Pereira LE, Szabó MPJ 1999. Report on ticks collected in the Southeast and Mid-West regions of Brazil: analyzing the potential transmission of tick-borne pathogens to man. *Rev Soc Bras Med Trop* 32: 613-619.
- Galvão MA, Cardoso LD, Mafra CL, Calic SB, Walker DH 2006. Revisiting Brazilian spotted fever focus of Caratinga, Minas Gerais State, Brazil. *Ann N Y Acad Sci* 1078: 255-256.
- Galvão MAM, Dumler JS, Mafra CL, Calic SB, Chamone CB, Cesarino Filho G, Olano JP, Walker DH 2003. Fatal spotted fever rickettsiosis, Minas Gerais, Brazil. *Emerg Infect Dis* 9: 1402-1405.
- Hayes SF, Burgdorfer W 1982. Reactivation of *Rickettsia rickettsii* in *Dermacentor andersoni* ticks: an ultrastructural analysis. *Infect Immun* 37: 779-785.
- Horta MC, Chiebao DP, de Souza DB, Ferreira F, Pinheiro SR, Labruna MB, Schumaker TT 2006. Prevalence of *Rickettsia felis* in the fleas *Ctenocephalides felis felis* and *Ctenocephalides canis* from two Indian villages in Sao Paulo Municipality, Brazil. *Ann N Y Acad Sci* 1078: 361-363.
- Horta MC, Labruna MB, Pinter A, Linardi PM, Schumaker TTS 2007. Rickettsia infection in five areas of the state of São Paulo, Brazil. *Mem Inst Oswaldo Cruz* 102: 793-801.
- Labruna MB, Whitworth T, Horta MC, Bouyer DH, McBride JW, Pinter A, Popov V, Gennari SM, Walker DH 2004. *Rickettsia* species infecting *Amblyomma cooperi* ticks from an area in the State of Sao Paulo, Brazil, where Brazilian spotted fever is endemic. *J Clin Microbiol* 42: 90-98.
- Lemos ER, Alvarenga FB, Cintra ML, Ramos MC, Paddock CD, Ferebee T, Zaki SR, Ferreira FC, Ravafnani RC, Machado RD, Guimarães MA, Coura JR 2001. Spotted fever in Brazil: a seroepidemiological study and description of clinical cases in an endemic area in the State of São Paulo. *Am J Trop Med Hyg* 65: 329-334.
- Linardi PM, Guimarães LR 2000. *Sifonápteros do Brasil*, Museu de Zoologia da USP-Fapesp, São Paulo, 173 pp.
- Oliveira RP, Galvão MAM, Mafra CL, Walker DH 2002. *Rickettsia felis* in *Ctenocephalides* spp. fleas, Brazil. *Emerg Infect Dis* 8: 317-319.
- Phillip RN, Casper EA, Burgdorfer W, Gerloff RK, Hughes LE, Bell EJ 1978. Serologic typing of rickettsiae of the spotted fever group by microimmunofluorescence. *J Immunol* 121: 1961-1968.
- Raoult D, La Scola B, Enea M, Fournier PE, Raoux V, Fenollar F, Galvão MAM, de Lamballerie X 2001. A flea-associated *Rickettsia* pathogenic for humans. *Emerg Infect Dis* 7: 73-81.
- Rolain Jean-Marc, Franc M, Davoust B, Raoult D 2003. Molecular detection of *Bartonella quintana*, *B. koehlerae*, *B. henselae*, *B. clarridgeiae*, *Rickettsia felis*, and *Wolbachia pipientis* in cat fleas, France. *Emerg Infect Dis* 9: 338-342.
- Schriefer ME, Sacci Jr JB, Dumler S, Bullen MG, Azad AF 1994. Identification of a novel rickettsial infection in a patient diagnosed with murine typhus. *J Clin Microbiol* 32: 949-954.
- Webb L, Mitchell C, Malloy DC, Dasch GA, Azad AF 1990. Detection of murine typhus infection in fleas by using the polymerase chain reaction. *J Clin Microbiol* 28: 530-534.