

A century of research: what have we learned about the interaction of *Trypanosoma cruzi* with host cells?

Maria Julia Manso Alves¹, Renato Arruda Mortara^{2/+}

¹Departamento de Bioquímica, Instituto de Química, Universidade de São Paulo, São Paulo, SP, Brasil ²Disciplina de Parasitologia, Departamento de Microbiologia, Imunologia e Parasitologia, Universidade Federal de São Paulo, Escola Paulista de Medicina, Rua Botucatu 862 6º andar, 04023-062 São Paulo, SP, Brasil

Since the discovery of *Trypanosoma cruzi* and the brilliant description of the then-referred to “new tripanosomiasis” by Carlos Chagas 100 years ago, a great deal of scientific effort and curiosity has been devoted to understanding how this parasite invades and colonises mammalian host cells. This is a key step in the survival of the parasite within the vertebrate host, and although much has been learned over this century, differences in strains or isolates used by different laboratories may have led to conclusions that are not as universal as originally interpreted. Molecular genotyping of the CL-Brener clone confirmed a genetic heterogeneity in the parasite that had been detected previously by other techniques, including zymodeme or schizodeme (kDNA) analysis. *T. cruzi* can be grouped into at least two major phylogenetic lineages: *T. cruzi* I, mostly associated with the sylvatic cycle and *T. cruzi* II, linked to human disease; however, a third lineage, *T. cruzi* III, has also been proposed. Hybrid isolates, such as the CL-Brener clone, which was chosen for sequencing the genome of the parasite (Elias et al. 2005, El Sayed et al. 2005a), have also been identified. The parasite must be able to invade cells in the mammalian host, and many studies have implicated the flagellated trypomastigotes as the main actor in this process. Several surface components of parasites and some of the host cell receptors with which they interact have been described. Herein, we have attempted to identify milestones in the history of understanding *T. cruzi*-host cell interactions. Different infective forms of *T. cruzi* have displayed unexpected requirements for the parasite to attach to the host cell, enter it, and translocate between the parasitophorous vacuole to its final cytoplasmic destination. It is noteworthy that some of the mechanisms originally proposed to be broad in function turned out not to be universal, and multiple interactions involving different repertoires of molecules seem to act in concert to give rise to a rather complex interplay of signalling cascades involving both parasite and cellular components.

Key words: *Trypanosoma cruzi* - cellular invasion - trypomastigotes - amastigotes - parasitophorous vacuole escape - phylogenetic lineages

Outlook

Since the pioneering studies by Hertha Meyer and co-workers (Meyer 1942, Meyer & Xavier 1948), which initiated *in vitro* studies of *Trypanosoma cruzi* development in cultured cells, and the subsequent detailed descriptions provided by James Dvorak and co-workers on how cells become infected by *T. cruzi* trypomastigotes (Dvorak & Hyde 1973, Dvorak & Howe 1976), numerous studies have been undertaken to elucidate the molecular mechanisms that underlie the complex process of parasite entry into mammalian host cells. In order to accomplish these studies, a great deal of effort has been devoted to isolating parasites and determining the optimal conditions for their growth and differentiation (Camargo 1964, Baker & Price 1973, Pan 1978a, Engel et al. 1982, Villalta & Kierszenbaum 1982, Petry et al. 1987, De Souza 2000). A number of significant contri-

butions have provided insights into both the ultrastructural organisation of the parasite (De Souza 2008) and the participation of both parasite and cellular in infection (Zingales & Colli 1985, De Souza 2000, Alves & Colli 2008). In Fig. 1, we have selected milestones that help to describe a trajectory of discovery that, like that of science in general, is not linear in time. Because several events overlap in time and relevance and therefore cannot be dissociated, references to particular findings may appear more than once. It is noteworthy that some of these events were initially thought to be of general importance in the biology of *T. cruzi*-host cell interactions, yet later turned out to be restricted to a particular parasite strain, clone or even target host cell. It has become increasingly apparent that a complex interplay of signalling cascades, involving both parasitic and cellular components, seem to operate in the infection process (Burleigh & Andrews 1995b, 1998, Burleigh & Woolsey 2002, Yoshida 2006, Alves & Colli 2007, Scharfstein & Lima 2008, Yoshida & Cortez 2008). The parasite infective forms considered herein are metacyclic (MT) and tissue-culture derived trypomastigotes (TCTs), as well as extracellular amastigotes (Fig. 2); bloodstream trypomastigote forms have also been studied by several laboratories, and their *in vitro* and *in vivo* behaviour is more similar to that of TCTs than MTs (Brener 1969, Gutteridge et al. 1978, Kipnis et al. 1979, Krettli et

Financial support: CNPq, CAPES, FAPESP, FINEP (MJMA)

+ Corresponding author: ramortara@unifesp.br

Received 3 March 2009

Accepted 29 May 2009

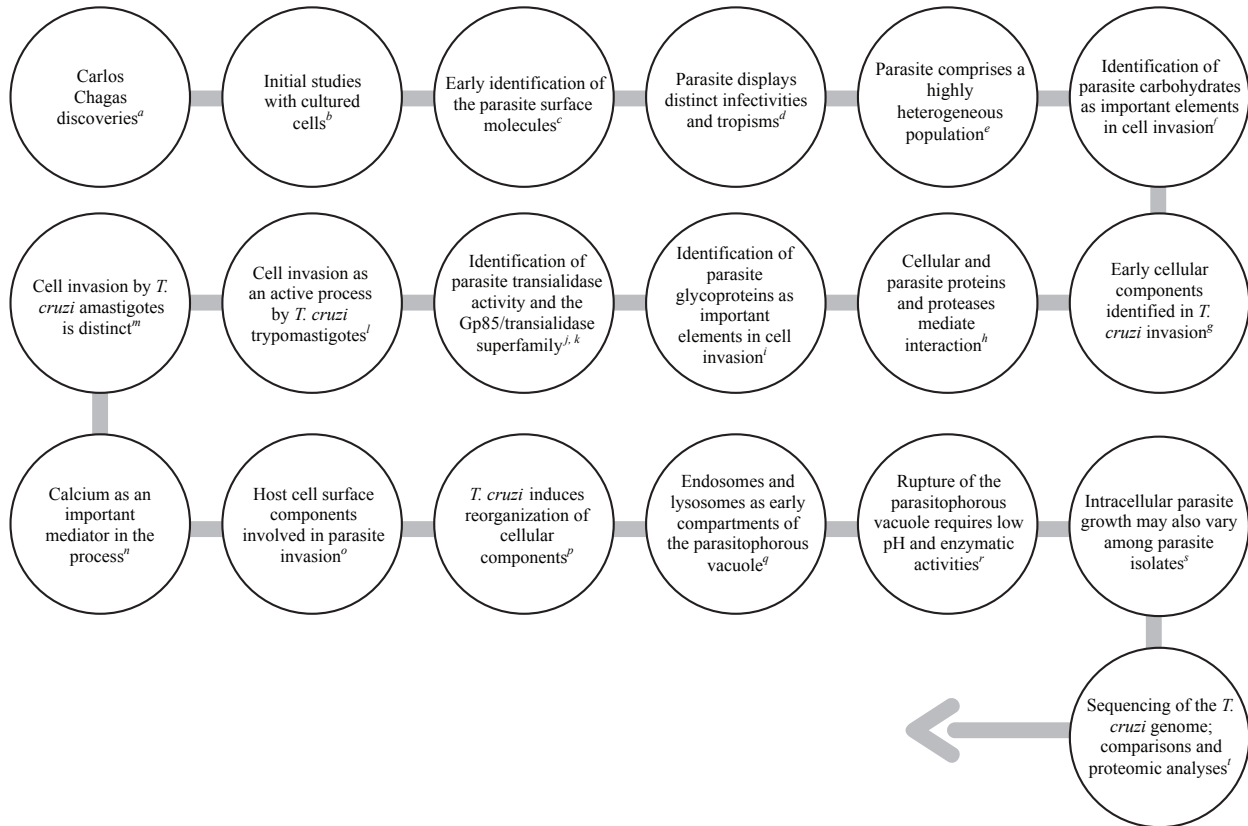


Fig. 1: major events in *Trypanosoma cruzi*-host cell interactions. *a*: Chagas (1909, 1911); *b*: Meyer (1942), Meyer and Xavier de Oliveira (1948); *c*: Alves and Colli (1974, 1975), de Lederkremer et al. (1980), Lima and Kierszenbaum (1982), Zingales et al. (1982), de Lederkremer and Colli (1995); *d*: Brener (1969), Silva and Nussenzweig (1953), Howells and Chiari (1975), Brener (1977), Melo and Brener (1978), Bice and Zeledon (1970); *e*: Miles (1974), Brener (1977), Alcantara and Brener (1978), Melo and Brener (1978), Souto et al. (1996), Briones et al. (1999), Brisse et al. (2000), Robello et al. (2000), Devera et al. (2003), Gaunt et al. (2003), Elias et al. (2005), Junqueira et al. (2005); *f*: Alves and Colli (1974, 1975), Araujo-Jorge and De Souza (1984), Avila et al. (1989), Andrade et al. (1991), Ouaiissi et al. (1991), Travassos and Almeida (1993), Previato et al. (1994), Souto-Pradón et al. (1994), Parodi et al. (1995), Kahn et al. (1996), Silva et al. (1998, 2006); *g*: Nogueira and Cohn (1976), Henriquez et al. (1981), Lima and Kierszenbaum (1982), Piras et al. (1982, 1983, 1985), Nogueira (1983), Villalta and Kierszenbaum (1983, 1984), Ouaiissi et al. (1985), Snary (1985), Schenkman et al. (1991a), Schenkman and Mortara (1992); *h*: Piras et al. (1985), de Titto and Araujo (1987), Mbawa et al. (1991), McKerrow (1991), Schenkman et al. (1991b), (1992, 1993), Eakin et al. (1992), Meirelles et al. (1992), Chaves et al. (1993), Colli (1993), Cross and Takle (1993), Burleigh et al. (1997), Santana et al. (1997), Procópio et al. (1998), Grellier et al. (2001), Santos et al. (2005); *i*: Alves and Colli (1975), Zingales et al. (1982), Parodi et al. (1983), Andrews et al. (1984, 1988), Araujo-Jorge and De Souza (1984), Alves et al. (1986), Scharfstein et al. (1986), Piras et al. (1987), Avila et al. (1989), Couto et al. (1990, 1993), Yoshida et al. (1990), Andrade et al. (1991), Ouaiissi et al. (1991), Mortara et al. (1992), Villalta et al. (1992a), Ming et al. (1993), Ruiz et al. (1993), Schenkman et al. (1993), Travassos and Almeida (1993), Previato et al. (1994), Souto-Pradón et al. (1994), Parodi et al. (1995), Kahn et al. (1996), Yoshida et al. (1997), Silva et al. (1998, 2006), Manque et al. (2000), Almeida and Gazzinelli (2001), Magdesian et al. (2001), Baida et al. (2006); *j*: Pereira (1983), Previato et al. (1985), de Titto and Araujo (1987), Schenkman et al. (1991b), (1992, 1993), Chaves et al. (1993), Colli (1993), Cross and Takle (1993); *k*: Previato et al. (1985), Frevert et al. (1992), Parodi et al. (1992), Schenkman et al. (1992), Kahn et al. (1993), Frasc (1994), Chuenkova and Pereira (1995), Manque et al. (2000), Malaga and Yoshida (2001), Atayde et al. (2004), Yoshida (2006), Alves and Colli (2008); *l*: Behbehani (1973), Dvorak and Hyde (1973), Alexander (1975), Tanowitz et al. (1975), Nogueira and Cohn (1976), Kipnis et al. (1979), Meirelles et al. (1982a), Schenkman et al. (1988, 1991), Mortara (1991), Schenkman and Mortara (1992); *m*: Nogueira and Cohn (1976), Pan (1978b), Carvalho et al. (1981, 1999), Hudson et al. (1984), Umezawa et al. (1985), Carvalho and De Souza (1986), Ley et al. (1988), Kahn et al. (1995), Fernandes and Mortara (2004), Mortara et al. (2005, 2008), Fernandes et al. (2006, 2007), Silva et al. (2006), da Silva et al. (2009, unpublished observations); *n*: Moreno et al. (1994), Tardieux et al. (1994), Burleigh and Andrews (1995a), Dorta et al. (1995), Wilkowsky et al. (1996), Rodriguez et al. (1997, 1999), Caler et al. (2000, 2001), Scharfstein et al. (2000), Yoshida et al. (2000), Tan and Andrews (2002), Garzoni et al. (2003), Yoshida and Cortez (2008); *o*: Henriquez et al. (1981), Lima and Kierszenbaum (1982), Nogueira (1983), Piras et al. (1983), Villalta and Kierszenbaum (1983, 1985), Ouaiissi et al. (1985), Snary (1985), Schenkman et al. (1988, 1991), von Kreuter and Santos Buch (1989), Mortara (1991), Ortega-Barria and Pereira (1991), Scharfstein et al. (2000), Magdesian et al. (2001), Woolsey et al. (2003), Fernandes et al. (2007a); *p*: Nogueira and Cohn (1976), Henriquez et al. (1981), Meirelles et al. (1982b), Nogueira (1983), Piras et al. (1983), Colli (1984), Schenkman et al. (1991), Schenkman and Mortara (1992), Tardieux et al. (1992), Vieira et al. (1994), Carvalho et al. (1999), Procópio et al. (1999), Cortez et al. (2006), Ferreira et al. (2006), Bartholomeu et al. (2008); *q*: Milder and Kloetzel (1980), Meirelles et al. (1986), Carvalho and De Souza (1989), Andrews (1995), Wilkowsky et al. (2002), Andreoli and Mortara (2003), Stecconi-Silva et al. (2003), Woolsey et al. (2003), Andrade and Andrews (2005); *r*: Milder and Kloetzel (1980), Meirelles et al. (1987), Andrews and Whitlow (1989), Ley et al. (1990), Hall et al. (1992), Stecconi-Silva et al. (2003), Andrade and Andrews (2004), Rubin-de-Celis et al. (2006); *s*: Baker and Price (1973), Behbehani (1973), Dvorak and Hyde (1973), Tanowitz et al. (1975), Nogueira and Cohn (1976), Pan (1978c), Milder and Kloetzel (1980), Franke de Cazzulo et al. (1994), Aoki et al. (1995), Bertello et al. (1996), Garg et al. (1997), Almeida-de-Faria et al. (1999), Tonelli et al. (2004); *t*: Atwood et al. (2005), El Sayed et al. (2005a, b).

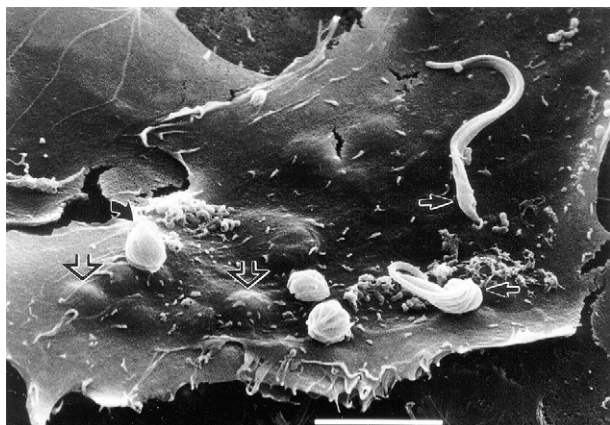


Fig. 2. *Trypanosoma cruzi* trypomastigotes as well as extracellular amastigotes are capable of infecting mammalian cells in culture. Scanning electron micrograph shows *T. cruzi* trypomastigotes (black arrows) and extracellular amastigotes (curved black arrow) invading Vero cells. Opened downward arrows show surface protrusions compatible in size with internalised amastigotes. Bar = 5 μ m. Image from reference Procópio et al. (1999).

al. 1979, Alcantara & Brener 1980, Meirelles et al. 1982b, Wirth & Kierszenbaum 1984, Zwirner et al. 1994, Gomes et al. 1995, Alves & Colli 2007). More recently, it was discovered that there are differences in the invasion mechanisms engaged by the distinct infective forms of the parasite from the two major phylogenetic lineages, an observation that has opened new avenues to study this already intricate process (Mortara et al. 2005, 2008, Yoshida 2006, 2008).

It is generally accepted that in order for cell invasion to occur, *T. cruzi* infective forms need to physically attach to the host cell surface. This process usually takes a few minutes in vitro, and it is not uncommon to observe trypomastigotes attaching and detaching from a target cell, as if "probing" it before invasion (Dvorak & Hyde 1973, Dvorak & Howe 1976, Nogueira & Cohn 1976, Andrews & Colli 1982, Meirelles et al. 1982a, Lima & Villalta 1988, Schenkman et al. 1991c, Villalta et al. 1992b). Attachment can be separated from invasion by lowering the temperature or fixing target cells (Andrews & Colli 1982, Meirelles et al. 1982a, Schenkman et al. 1991c). Several lines of evidence suggest that motile trypomastigotes promptly attach to and invade live cells through an active mechanism that does not require intact host cell microfilaments (Kipnis et al. 1979, Schenkman et al. 1991c, Schenkman & Mortara 1992), but instead depends on parasite energy (Schenkman et al. 1991c). In contrast, extracellular amastigotes do not attach to fixed cells, and their invasion depends on functional host cell microfilaments (Mortara 1991, Procópio et al. 1998, Mortara et al. 2005). Once attachment is established, signals exchanged (see above references and section below) activate parasite-driven invasion of trypomastigotes (Kipnis et al. 1979, Schenkman et al. 1991c, Schenkman & Mortara 1992) or induce "phagocytosis-like" entry of amastigotes (Nogueira & Cohn 1976, Procópio et al. 1998, 1999).

It has been demonstrated that a number of parasite and host cell components (such as proteins/glycoproteins and other glycoconjugates) participate in the attachment phase of the invasion process (Burleigh & Andrews 1995b, 1998, Burleigh & Woolsey 2002, Andrade & Andrews 2005, Alves & Colli 2007, Yoshida & Cortez 2008) and consequently play a role in signalling exchanges. More recently, it has also been shown that lipid rafts in the host membrane may also take part in this process (Barrias et al. 2007, Fernandes et al. 2007a). The complexity of the invasion process can be gleaned from the examples provided in the section dealing with the multitude of signalling events involving *T. cruzi*-host cell interactions.

Another important factor of the multitude of studies in this area is the extensive variety of host or target cells. These include macrophages, epithelial and endothelial cells, fibroblasts, dendritic cells, neurites as well as cardiomyocytes (Meyer 1942, Meyer & Xavier de Oliveira 1948, Nogueira & Cohn 1976, Henriquez et al. 1981, Meirelles et al. 1982a, 1987, 1999, Morris et al. 1988, 1990, Schenkman et al. 1988, Araujo-Jorge 1989, Ortega-Barria & Pereira 1991, Aprigliano et al. 1993, Procópio et al. 1998, 1999, Huang et al. 1999, Chuenkova & Pereira 2001, Garzoni et al. 2003, Melo et al. 2004, Taniwaki et al. 2006, Coimbra et al. 2007, Bartholomeu et al. 2008, Lu et al. 2008, Poncini et al. 2008, Scharfstein & Lima 2008). This single variable exemplifies the multitude of host cell and parasite components that, upon interaction, lead to activation of the signalling pathways discussed below. Moreover, the plethora of molecules involved increases when different strains of parasite are compared. The analysis of the invasion mechanism (or mechanisms) of host cells by *T. cruzi* based on data from the literature can be restricted to one cell type-one or strain until more general conclusions can emerge. However, in the case of in vivo studies, the infection route must also be considered (Hoft 1996, Hoft et al. 1996, Yoshida 2008).

Biology of *T. cruzi*-host cell invasion

Paradigmatic studies have provided new insights into the invasion mechanisms of *T. cruzi*. Some of these studies have observed that calcium-dependent lysosomal recruitment takes place during trypomastigote invasion (Tardieux et al. 1992, Andrews 2002). According to this model, TCTs engage a signalling process that culminates with the formation of the parasitophorous vacuole (PV) (Burleigh & Andrews 1998, Burleigh & Woolsey 2002). Additional evidence suggests the participation of components of the early endocytic trafficking pathway, such as dynamin and Rab5, and indicates that the lysosomal process might be both more elaborate and downstream of earlier events (Wilkowsky et al. 2002). Previous studies (Todorov et al. 2000, Wilkowsky et al. 2001) have used a quantitative approach to identify the role of phosphatidylinositol 3-kinase (PI3-K) (Woolsey et al. 2003) in the lysosomal pathway and observed that this key cellular component is involved in a lysosome-independent *T. cruzi* internalisation pathway utilised by TCTs. Trypomastigotes that use this route mobilise phosphorylated inositides during the formation

of the PV. These molecules then mature and become enriched in the same compartments as the lysosomal marker LAMP-1 (Tardieux et al. 1992, Procópio et al. 1998, Woolsey et al. 2003, Andrade & Andrews 2004, Fernandes et al. 2007b). One important outcome of this work was to demonstrate for the first time the relative contributions of each mode of entry, namely PI3-K (50%), lysosome (20%) and endosomal routes (20%) (Woolsey et al. 2003). The available information about the mechanisms of amastigote penetration is comparatively scarcer than that of trypomastigotes. In studies on interactions with macrophages, it has been noted that members of the Gp85/TS antigen family engage mannose receptors to gain entry to professional phagocytes (Kahn et al. 1995). Carbohydrate epitopes seem to play a role in the initial steps of invasion in non-phagocytic cells (Silva et al. 2006). **The relative roles of PI3-K, endosomal trafficking and LAMP-1 (Procópio et al. 1998) pathways in extracellular amastigote invasion are still not fully understood.**

After entering host cells, parasites are usually found in an acidic membrane-bound compartment referred to as phagosome or PV, that may be comprised of host cell plasma membrane, or endosomal or lysosomal in its origin (Milder & Kloetzel 1980, Meirelles et al. 1986, Carvalho & De Souza 1989, Hall et al. 1991, Schenkman & Mortara 1992, Wilkowsky et al. 2002, Woolsey et al. 2003, Andrade & Andrews 2004, Fernandes et al. 2007b). The time of residence inside the PVs may vary between infective forms, ranging from 1-2 h in the case of amastigotes and TCTs (Meirelles et al. 1986, Ley et al. 1990, Hall et al. 1992, Stecconi-Silva et al. 2003, Andrade & Andrews 2004, Rubin-de-Celis et al. 2006) to several hours in the case of MT trypomastigotes (Stecconi-Silva et al. 2003, Rubin-de-Celis et al. 2006). These then eventually escape and differentiate into amastigotes in the cytoplasm (De Souza 1984, 2000, 2005, Andrews 2000).

Once inside the host cells, trypomastigotes and amastigotes secrete TcTOX, a complement 9 (C9) factor-related molecule that, at low pH, will destroy the PV membrane and allow the parasite access to the cytosol (Andrews & Whitlow 1989, Andrews 1990, Andrews et al. 1990, Ley et al. 1990, Manning-Cela et al. 2001, Rubin-de-Celis et al. 2006). Raising the intracellular pH with weak bases affects MT invasion and substantially delays escape from the PV, increasing the latency from about 2-10 h. By contrast, the kinetics of amastigote invasion and escape are not affected by this treatment (Stecconi-Silva et al. 2003). This lytic activity is likely to be facilitated by parasite transialidase activity on the luminal glycoproteins that protect the PV (Hall et al. 1992, Stecconi-Silva et al. 2003, Rubin-de-Celis et al. 2006). **In agreement with the idea that the glycosylation of lysosomal luminal glycoproteins is relevant for the protection of the PV membrane, parasites promptly escape from PVs formed in CHO cells deficient in sialylation (Stecconi-Silva et al. 2003, Rubin-de-Celis et al. 2006). So far, TcTOX activity has been observed in extracellular amastigotes (Ley et al. 1990, Stecconi-Silva et al. 2003) and TCTs (Manning-Cela et al. 2001, An-**

dreoli & Mortara 2003, Rubin-de-Celis et al. 2006). In contrast, MT trypomastigotes display both very weak transialidase activity and undetectable TcTOX (Andreoli & Mortara 2003, Stecconi-Silva et al. 2003). Therefore, whereas extracellular TCTs and amastigotes display a somewhat predictable behaviour regarding cell invasion and escape, at present we do not have a consistent model to fully understand how MT trypomastigotes actually escape from their PVs. Using polyclonal antibodies to C9, it has recently been shown that amastigotes express a TcTOX-related compound (Andreoli et al. 2006); this tool may be useful for mapping this compound throughout the intracellular traffic in the different infective forms. Recent work has shown that the kinetics of endosomal and lysosomal marker accumulation, and their subsequent loss - indicative of parasite escape into the cytoplasm - is not correlated with either the infective form or phylogenetic group of the parasite tested under these particular conditions (Fernandes et al. 2007b).

Once free in the cytoplasm, trypomastigotes differentiate into amastigotes; these forms then begin to grow by binary fission for up to nine cycles (Dvorak & Hyde 1973). During the course of intracellular growth, the parasite disrupts host cellular structure, attachment to the substrate becomes loose and basic functions such as contractility are impaired (Meyer & Xavier de Oliveira 1948, Dvorak & Hyde 1973, Low et al. 1992, Pereira et al. 1993, 2000, Carvalho et al. 1999, Hall et al. 2000, Taniwaki et al. 2005, 2006). Usually, with the cytoplasm loaded with a couple of tens of amastigotes, host cell division becomes arrested (Meyer & Xavier de Oliveira 1948, Low et al. 1992). **During the differentiation of amastigotes into trypomastigotes, preceding cell rupture and the release of the parasite into the surrounding medium, intermediate epimastigote-like forms have been observed (Meyer & Xavier de Oliveira 1948, Almeida-de-Faria et al. 1999, Tonelli et al. 2004). When the cell becomes filled with trypomastigotes, the plasma membrane ruptures and significant degenerative processes can be observed, probably due to the intense mechanical movement of the parasites (Meyer & Xavier de Oliveira 1948, Low et al. 1992, Pereira et al. 1993, Taniwaki et al. 2005, 2006). Interestingly, the intracellular cell cycle of *T. cruzi* seems to be independent of the of the host cell nucleus, as all developmental stages can be found within enucleated host cells infected with trypomastigotes (Coimbra et al. 2007). Although the precise mechanism underlying cell rupture has been inferred as being mostly mechanical in nature, it has been known since the original studies by Hertha Meyer that different cell types present distinct susceptibilities to cellular rupture by the intracellular parasites (Meyer 1942, Meyer & Xavier de Oliveira 1948).**

The precise mechanisms that govern the intricate signalling exchanges between the parasite and the host cell are discussed in a separate section. As indicated above, several studies have found that amastigotes, prematurely released from infected cells or generated by the extracellular differentiation of released TCTs, can also infect cultured cells and animals (Behbehani 1973, Nogueira & Cohn 1976, Hudson et al. 1984, Carvalho & De Souza

1986, Ley et al. 1988, Mortara 1991). Systematic studies on cell invasion and PV escape carried out in several laboratories have reinforced the notion that each infective form of the parasite has a unique interplay with the specific target host cell with which it interacts. Not only the parasite infective form, but also the strain (and phylogenetic origin) will determine the outcome of this interaction (Milder & Kloetzel 1980, Carvalho & De Souza 1986, 1989, Meirelles et al. 1986, Ley et al. 1990, Hall et al. 1992, Andrews 1994, Ochatt et al. 1997, Stecconi-Silva et al. 2003, Rubin-de-Celis et al. 2006, Fernandes et al. 2007b). The variety of mechanisms used for cell invasion and escape from the PVs by amastigotes and trypomastigotes is consistent with the complex repertoires of both infective forms and surface molecules that the parasite has evolved to ensure host colonisation (Ley et al. 1990, Hall et al. 1992, Andrews 1994, Yoshida 2002, Mortara et al. 2005, Yoshida & Cortez 2008, da Silva et al. 2009). Adding to this already complex scenario, less canonical host cell invasion mechanisms should also be mentioned. These include the phagocytosis of apoptotic *T. cruzi* infected lymphocytes (Freire-de-Lima et al. 2000, Luder et al. 2001, Lopes et al. 2007, De Meis et al. 2008) and the less-studied autophagic pathway (Romano et al. 2009). It is similarly worth mentioning that there are a variety of receptors linked to the host immune system, such as Toll-like receptors that parasite molecules engage with during *in vivo* infections, and which therefore may also play a key role in the host-parasite interplay (Tarleton 2007).

Signalling mechanisms and molecules involved in *T. cruzi* invasion

The number of identified interacting components that may play a role in *T. cruzi*-host cell interactions is continually growing. For recent reviews on this rapidly evolving field, the reader is referred to the following references: De Souza (2000, 2002), Burleigh and Woolsey (2002), Yoshida (2002), Andrade and Andrews (2005), Mortara et al. (2005), Alves and Colli (2007), Scharfstein and Lima (2008), Yoshida and Cortez (2008). Multiple interactions between molecules from the parasite and the host lead to the internalisation of the parasite and an increase of cytosolic Ca^{2+} in both the host cells and in the parasite during invasion (Morris et al. 1988, Moreno et al. 1992, 1994, Krassner et al. 1993, Burleigh & Andrews 1995b, 1998, Docampo et al. 1995, Dorta et al. 1995, Wilkowsky et al. 1996). From the point of view of various types of host cell, contact with TCTs (Tardieux et al. 1994), MTs (Dorta et al. 1995) and extracellular amastigotes (Fernandes et al. 2006), but not epimastigotes (Tardieux et al. 1994), gives rise to a transient calcium influx. The same phenomena was observed when either specific molecules involved in *T. cruzi* cell invasion or uncharacterised factors released by the parasite (Tardieux et al. 1994, Burleigh & Andrews 1995a) were incubated with the host cell.

Calcium influxes have been associated with the formation of PVs or with parasite evasion from the vacuoles and successful infection (Burleigh & Andrews 1998, Burleigh & Woolsey 2002, De Souza 2002, Andrade

& Andrews 2004, Burleigh 2005). Among the *T. cruzi* components involved in invasion are molecules belonging to the Gp85/trans-sialidase superfamily (Gp85/TS) and mucin-like proteins present on the surface of the parasite. Both are encoded by large gene families (~1430 and ~863 gp85/TS and mucin-encoding genes, respectively) (Colli 1993, Frascch 1994, Schenkman et al. 1994). As interesting examples, members of the Gp85/TS family are developmentally regulated by posttranscriptional mechanisms, with Gp82 and Tc85 glycoproteins expressed mainly in the MT and TCT forms, respectively. Gp82 binds to gastric mucin and Tc85 binds to members of the laminin and fibronectin families in the extracellular matrix (ECM); however, other receptors cannot be ruled out as Tc85 molecules have been described as multi-adhesion glycoproteins (Wirth & Kierszenbaum 1984, Ouaisi et al. 1984, 1985, Noisin & Villalta 1989, Santana et al. 1997, Magdesian et al. 2001, Ulrich et al. 2002, Nde et al. 2006, Yoshida 2008). It should be mentioned that other molecules expressed in *T. cruzi* bind to ECM elements such as heparin, heparan sulfate, collagen and thrombospondin-1 (Ortega-Barria & Pereira 1991). A synthetic peptide based on the conserved FLY domain (VTXNVFLYNR) present in all members of the Gp85/TS family promotes dephosphorylation of an intermediate filament protein (cytokeratin 18) that leads to cytoskeleton reorganisation and activation of the ERK1/2 signalling cascade; as a result, there is an increase in the entry of parasites into epithelial cells (Magdesian et al. 2007). On the other hand, it has been shown that an inactive form of TS from TCT that binds sialic acid triggers NF- κ B activation, the expression of adhesion molecules on endothelial cells and upregulation of parasite entry in a FLY-independent and carbohydrate-dependent way (Dias et al. 2008). Recently, TS has been linked to the invasion of TrkA (nerve growth factor receptor)-expressing cells (e.g., dendritic cells) by a mechanism that involves triggering TrkA-dependent and PI3-K/Akt kinase signalling events (Melo-Jorge & Pereira-Perrin 2007). The presence of Gp82 on MT trypomastigotes induces calcium transients that result in phosphorylation of a 175 kDa protein in MTs (CL strain) and Ca^{2+} mobilisation in the host cell through a sequence of events involving PTK, PLC and IP3 (Yoshida 2006, 2008, Yoshida & Cortez 2008). Interestingly, although gp35/50 mucins are the main MT surface components involved in the attachment phase of the G strain of *T. cruzi* (Ruiz et al. 1993) and Gp85/35 mucins are important acceptors of sialic acid catalysed by *trans*-sialidase, sialyl residues (Schenkman et al. 1993) are not involved in the invasion mechanism (Yoshida et al. 1997). On the other hand, the role of sialic acid in TCT invasion, together with other lectin-like interactions, has yet to be fully clarified (Libby et al. 1986, Ming et al. 1993, Schenkman et al. 1993, 1994, Yoshida et al. 1997, Stecconi-Silva et al. 2003, Rubin-de-Celis et al. 2006, Dias et al. 2008).

Another mechanism for the attachment-independent invasion of trypomastigotes phase involves the activation of the TGF β signalling pathway (Silva et al. 1991, Ming et al. 1995, Araujo-Jorge et al. 2008). The agent

involved in mediating the signalling remains elusive, but it seems to be thermo-labile and hydrophobic in nature. It is likely that a protease secreted by the parasite might activate latent TGFβ-associated with ECM components, allowing activation of Smad 2/3 pathway through the TGFβ receptors (I and II) present on the surface of host cells. The pivotal role of this pathway in infectious of heart tissues and consequently in the chagasic myocardopathy has been described (Araujo-Jorge et al. 2008).

Other molecules not involved directly in receptor-ligand interactions are nonetheless fundamental to establishing infection by *T. cruzi*. Inhibitors of the prolyl oligopeptidase (POP Tc80), a serine protease that hydrolyses human collagens types I and IV and fibronectin blocks the entry of TCTs into cultured cells (Harth et al. 1993, Santana et al. 1997, Grellier et al. 2001). Cruzipain, the major cysteine protease present in all stages of *T. cruzi*, has also been implicated in the internalisation process due to its ability to generate bradykinin and increase parasite entry through B2-type bradykinin receptors. A link between innate and adaptive immune responses through bradykinin has therefore been proposed. It is worth mentioning in this context that the invasion of host cells by MTs of the CL strain depends on tyrosine phosphorylation and the IP₃-dependent (1,4,5-inositol-triphosphate) release of calcium from endoplasmic reticulum (ER) stores, whereas MTs of the G strain engage adenylate cyclase and cause calcium to be mobilised from acidocalcisomes (Neira et al. 2002). No comparative data between both strains is evaluable for TCTs, but inhibitors of class I and class III PI3-K activities block the entry of the parasite into macrophages, suggesting the involvement of different isoforms of this kinase (Todorov et al. 2000). On the other hand, it seems that calcium mobilisation from acidocalcisomes, but not from the ER, is important for cellular invasion by extracellular amastigotes of either the G or CL strains (Mortara et al. 2005, Fernandes et al. 2006, Scharfstein et al. 2007, 2008, Scharfstein & Lima 2008).

A lot of attention was initially given to the signalling pathways active inside the host cell during *T. cruzi* infection, as well as to the identification of ligands and receptors involved in the infection process. Although a great deal has been learned from sequencing the *T. cruzi* genome (El Sayed et al. 2005a, b), including mapping its 190 kinases and 86 phosphatases (Parsons et al. 2005, Brenchley et al. 2007), knowledge about the signalling pathways active in the parasite is still scarce and, mostly, fragmented. It is evident that the complexity of the system has yet to be overcome.

Perspectives

It is clear that the mechanisms of invasion used by *T. cruzi* TCTs, MT trypomastigotes and extracellular amastigotes are divergent. Adding to this complexity is the finding that there are mechanistic variations between isolates of the two main phylogenetic groups that also depend on the type of host cell analysed. To circumvent this issue, specific host lineages and *T. cruzi* strains and/or clones could be chosen as models to be used by the

scientific community in order to reveal urgently needed information about the general mechanisms that govern mammalian cell invasion.

A great deal more research has been done to establish the signalling pathways in the host cells than in the parasite during infection. The 190 kinases and 86 phosphatases identified in the *T. cruzi* genome should, hopefully, provide the necessary tools to increase interest in the field and provide more complete mechanistic explanations of the infection process.

REFERENCES

- Alcantara A, Brener Z 1978. The *in vitro* interaction of *Trypanosoma cruzi* bloodstream forms and mouse peritoneal macrophages. *Acta Trop* 35: 209-219.
- Alcantara A, Brener Z 1980. *Trypanosoma cruzi*: role of macrophage membrane components in the phagocytosis of bloodstream forms. *Exp Parasitol* 50: 1-6.
- Alexander J 1975. Effect of the antiphagocytic agent cytochalasin B on macrophage invasion by *Leishmania mexicana* promastigotes and *Trypanosoma cruzi* epimastigotes. *J Protozool* 22: 237-240.
- Almeida-de-Faria M, Freymuller E, Colli W, Alves MJ 1999. *Trypanosoma cruzi*: characterization of an intracellular epimastigote-like form. *Exp Parasitol* 92: 263-274.
- Almeida IC, Gazzinelli RT 2001. Proinflammatory activity of glycosylphosphatidylinositol anchors derived from *Trypanosoma cruzi*: structural and functional analyses. *J Leukoc Biol* 70: 467-477.
- Alves MJ, Colli W 1974. Agglutination of *Trypanosoma cruzi* by concanavalin A. *J Protozool* 21: 575-578.
- Alves MJ, Colli W 2007. *Trypanosoma cruzi*: adhesion to the host cell and intracellular survival. *IUBMB Life* 59: 274-279.
- Alves MJ, Colli W 2008. Role of the gp85/trans-sialidase superfamily of glycoproteins in the interaction of *Trypanosoma cruzi* with host structures. *Subcell Biochem* 47: 58-69.
- Alves MJM, Abuin G, Kuwajima VY, Colli W 1986. Partial inhibition of trypomastigote entry into cultured mammalian cells by monoclonal antibodies against a surface glycoprotein of *Trypanosoma cruzi*. *Mol Biochem Parasitol* 21: 75-82.
- Alves MJM, Colli W 1975. Glycoproteins from *Trypanosoma cruzi*: partial purification by gel chromatography. *FEBS Lett* 52: 188-190.
- Andrade AFB, Esteves MJG, Angluster J, Gonzales-Perdomo M, Goldenberg S 1991. Changes in cell-surface carbohydrates of *Trypanosoma cruzi* during metacyclogenesis under chemically defined conditions. *J Gen Microbiol* 137: 2845-2849.
- Andrade LO, Andrews NW 2004. Lysosomal fusion is essential for the retention of *Trypanosoma cruzi* inside host cells. *J Exp Med* 200: 1135-1143.
- Andrade LO, Andrews NW 2005. The *Trypanosoma cruzi*-host-cell interplay: location, invasion, retention. *Nat Rev Microbiol* 3: 819-823.
- Andreoli WK, Mortara RA 2003. Acidification modulates the traffic of *Trypanosoma cruzi* trypomastigotes in Vero cells harboring *Coxiella burnetii* vacuoles. *Int J Parasitol* 33: 185-197.
- Andreoli WK, Taniwaki NN, Mortara RA 2006. Survival of *Trypanosoma cruzi* metacyclic trypomastigotes within *Coxiella burnetii* vacuoles: differentiation and replication within an acidic milieu. *Microbes Infect* 8: 172-182.
- Andrews NW 1990. The acid-active hemolysin of *Trypanosoma cruzi*. *Exp Parasitol* 71: 241-244.

- Andrews NW 1994. From lysosomes into the cytosol: the intracellular pathway of *Trypanosoma cruzi*. *Braz J Med Biol Res* 27: 471-475.
- Andrews NW 1995. Lysosome recruitment during host cell invasion by *Trypanosoma cruzi*. *Trends Cell Biol* 5: 133-137.
- Andrews NW 2000. Regulated secretion of conventional lysosomes. *Trends Cell Biol* 10: 316-321.
- Andrews NW 2002. Lysosomes and the plasma membrane: trypanosomes reveal a secret relationship. *J Cell Biol* 158: 389-394.
- Andrews NW, Abrams CK, Slatin SL, Griffiths G 1990. A *T. cruzi*-secreted protein immunologically related to the complement component C9: evidence for membrane pore-forming activity at low pH. *Cell* 61: 1277-1287.
- Andrews NW, Colli W 1982. Adhesion and interiorization of *Trypanosoma cruzi* in mammalian cells. *J Protozool* 29: 264-269.
- Andrews NW, Katzin AM, Colli W 1984. Mapping of surface glycoproteins of *Trypanosoma cruzi* by two-dimensional electrophoresis. A correlation with the cell invasion capacity. *Eur J Biochem* 140: 599-604.
- Andrews NW, Robbins ES, Ley V, Hong KS, Nussenzweig V 1988. Developmentally regulated, phospholipase C-mediated release of the major surface glycoprotein of amastigotes of *Trypanosoma cruzi*. *J Exp Med* 167: 300-314.
- Andrews NW, Whitlow MB 1989. Secretion by *Trypanosoma cruzi* of a hemolysin active at low pH. *Mol Biochem Parasitol* 33: 249-256.
- Aoki T, Nakajima-Shimada J, Hirota Y 1995. Quantitative determination of *Trypanosoma cruzi* growth inside host cells *in vitro* and effect of allopurinol. *Adv Exp Med Biol* 370: 499-502.
- Aprigliano O, Masuda MO, Meirelles MN, Pereira MC, Barbosa HS, Barbosa JC 1993. Heart muscle cells acutely infected with *Trypanosoma cruzi*: characterization of electrophysiology and neurotransmitter responses. *J Mol Cell Cardiol* 25: 1265-1274.
- Araujo-Jorge TC 1989. The biology of *Trypanosoma cruzi*-macrophage interaction. *Mem Inst Oswaldo Cruz* 84: 441-462.
- Araujo-Jorge TC, De Souza W 1984. Effect of carbohydrates, peroxidase and enzymes in the process of endocytosis of *Trypanosoma cruzi* by macrophages. *Acta Trop* 41: 17-28.
- Araujo-Jorge TC, Waghbi MC, Soeiro MN, Keramidias M, Bailly S, Feige JJ 2008. Pivotal role for TGF-beta in infectious heart disease: the case of *Trypanosoma cruzi* infection and consequent Chagasic myocardialopathy. *Cytokine Growth Factor Rev* 19: 405-413.
- Atayde VD, Neira I, Cortez M, Ferreira D, Freymuller E, Yoshida N 2004. Molecular basis of non-virulence of *Trypanosoma cruzi* clone CL-14. *Int J Parasitol* 34: 851-860.
- Atwood JA, III, Weatherly DB, Minning TA, Bundy B, Cavola C, Oppendoes FR, Orlando R, Tarleton RL 2005. The *Trypanosoma cruzi* proteome. *Science* 309: 473-476.
- Avila JL, Rojas M, Galili U 1989. Immunogenic Gal alpha 1-3Gal carbohydrate epitopes are present on pathogenic American *Trypanosoma* and *Leishmania*. *J Immunol* 142: 2828-2834.
- Baida RC, Santos MR, Carmo MS, Yoshida N, Ferreira D, Ferreira AT, El Sayed NM, Andersson B, Da Silveira JF 2006. Molecular characterization of serine-alanine- and proline-rich proteins of *Trypanosoma cruzi* and their possible role in host cell infection. *Infect Immun* 74: 1537-1546.
- Baker JR, Price J 1973. Growth *in vitro* of *Trypanosoma cruzi* as amastigotes at temperatures below 37°C. *Int J Parasitol* 3: 549-551.
- Barrias ES, Dutra JM, De Souza W, Carvalho TM 2007. Participation of macrophage membrane rafts in *Trypanosoma cruzi* invasion process. *Biochem Biophys Res Commun* 363: 828-834.
- Bartholomeu DC, Ropert C, Melo MB, Parroche P, Junqueira CF, Teixeira SM, Sirois C, Kasperkovitz P, Knetter CF, Lien E, Latz E, Golenbock DT, Gazzinelli RT 2008. Recruitment and endolysosomal activation of TLR9 in dendritic cells infected with *Trypanosoma cruzi*. *J Immunol* 181: 1333-1344.
- Behbehani K 1973. Developmental cycles of *Trypanosoma (Schizotrypanum) cruzi* (Chagas, 1909) in mouse peritoneal macrophages *in vitro*. *Parasitology* 66: 343-353.
- Bertello LE, Andrews NW, Lederkremer RM 1996. Developmentally regulated expression of ceramide in *Trypanosoma cruzi*. *Mol Biochem Parasitol* 79: 143-151.
- Bice DE, Zeledon R 1970. Comparison of infectivity of strains of *Trypanosoma cruzi* (Chagas 1909). *J Parasitol* 54: 663-670.
- Brenchley R, Tariq H, McElhinney H, Szoor B, Huxley-Jones J, Stevens R, Matthews K, Taberner L 2007. The TriTryp phosphatome: analysis of the protein phosphatase catalytic domains. *BMC Genomics* 8: 434.
- Brener Z 1969. The behaviour of slender and stout forms of *Trypanosoma cruzi* in the bloodstream of normal and immune mice. *Ann Trop Med Parasitol* 63: 215-220.
- Brener Z 1977. Intraspecific variations in *Trypanosoma cruzi*: two types of parasite populations presenting distinct characteristics. *Pan Am Health Organ Sci Publ* 347: 11-21.
- Briones MR, Souto RP, Stolf BS, Zingales B 1999. The evolution of two *Trypanosoma cruzi* subgroups inferred from rRNA genes can be correlated with the interchange of American mammalian faunas in the Cenozoic and has implications to pathogenicity and host specificity. *Mol Biochem Parasitol* 104: 219-232.
- Brisse S, Dujardin JC, Tibayrenc M 2000. Identification of six *Trypanosoma cruzi* lineages by sequence-characterised amplified region markers. *Mol Biochem Parasitol* 111: 95-105.
- Burleigh BA 2005. Host cell signaling and *Trypanosoma cruzi* invasion: do all roads lead to lysosomes? *Sci STKE*: e36.
- Burleigh BA, Andrews NW 1995a. A 120-kDa alkaline peptidase from *Trypanosoma cruzi* is involved in the generation of a novel Ca²⁺-signaling factor for mammalian cells. *J Biol Chem* 270: 5172-5180.
- Burleigh BA, Andrews NW 1995b. The mechanisms of *Trypanosoma cruzi* invasion of mammalian cells. *Annu Rev Microbiol* 49: 175-200.
- Burleigh BA, Andrews NW 1998. Signaling and host cell invasion by *Trypanosoma cruzi*. *Curr Opin Microbiol* 1: 461-465.
- Burleigh BA, Caler EV, Webster P, Andrews NW 1997. A cytosolic serine endopeptidase from *Trypanosoma cruzi* is required for the generation of Ca²⁺ signaling in mammalian cells. *J Cell Biol* 136: 609-620.
- Burleigh BA, Woolsey AM 2002. Cell signalling and *Trypanosoma cruzi* invasion. *Cell Microbiol* 4: 701-711.
- Caler EV, Chakrabarti S, Fowler KT, Rao S, Andrews NW 2001. The exocytosis-regulatory protein synaptotagmin VII mediates cell invasion by *Trypanosoma cruzi*. *J Exp Med* 193: 1097-1104.
- Caler EV, Morty RE, Burleigh BA, Andrews NW 2000. Dual role of signaling pathways leading to Ca²⁺ and cyclic AMP elevation in host cell invasion by *Trypanosoma cruzi*. *Infect Immun* 68: 6602-6610.
- Camargo EP 1964. Growth and differentiation in *Trypanosoma cruzi*: origin of metacyclic trypomastigotes in liquid media. *Rev Inst Med Trop Sao Paulo* 6: 93-100.
- Carvalho RMG, Meirelles MNL, De Souza W, Leon W 1981. Isolation

- of the intracellular stage of *Trypanosoma cruzi* and its interaction with mouse macrophages *in vitro*. *Infect Immun* 33: 546-554.
- Carvalho TM, De Souza W 1986. Infectivity of amastigotes of *Trypanosoma cruzi*. *Rev Inst Med Trop Sao Paulo* 28: 205-212.
- Carvalho TM, De Souza W 1989. Early events related with the behavior of *Trypanosoma cruzi* within an endocytic vacuole in mouse peritoneal macrophages. *Cell Struct Funct* 14: 383-392.
- Carvalho TM, Ferreira AG, Coimbra ES, Rosestolato CT, De Souza W 1999. Distribution of cytoskeletal structures and organelles of the host cell during evolution of the intracellular parasitism by *Trypanosoma cruzi*. *J Submicrosc Cytol Pathol* 31: 325-333.
- Chagas C 1909. Nova tripanozomíase humana. Estudos sobre a morfologia e o ciclo evolutivo do *Schizotrypanum* n.gen. n. sp., agente etiológico de nova entidade mórbida do homem. *Mem Inst Oswaldo Cruz* 1: 159-218.
- Chagas C 1911. Nova entidade morbida do homem. Resumo geral de estudos etiologicos e clinicos. *Mem Inst Oswaldo Cruz* 3: 219-275.
- Chaves LB, Briones MRS, Schenkman S 1993. *Trans*-sialidase from *Trypanosoma cruzi* epimastigotes is expressed at the stationary phase and is different from the enzyme expressed in trypomastigotes. *Mol Biochem Parasitol* 61: 97-106.
- Chuenkova M, Pereira MEA 1995. *Trypanosoma cruzi trans*-sialidase: enhancement of virulence in a murine model of Chagas' disease. *J Exp Med* 181: 1693-1703.
- Chuenkova MV, Pereira MA 2001. The *T. cruzi trans*-sialidase induces PC12 cell differentiation via MAPK/ERK pathway. *Neuroreport* 12: 3715-3718.
- Coimbra VC, Yamamoto D, Khusal KG, Atayde VD, Fernandes MC, Mortara RA, Yoshida N, Alves MJ, Rabinovitch M 2007. Enucleated L929 cells support invasion, differentiation and multiplication of *Trypanosoma cruzi* parasites. *Infect Immun* 75: 3700-3706.
- Colli W 1984. Interiorization of *Trypanosoma cruzi* into mammalian host cells in the light of the parasite membrane chemical composition. *Mem Inst Oswaldo Cruz* 79: 45-50.
- Colli W 1993. *Trans*-sialidase: a unique enzyme activity discovered in the protozoan *Trypanosoma cruzi*. *FASEB J* 7: 1257-1264.
- Cortez M, Atayde V, Yoshida N 2006. Host cell invasion mediated by *Trypanosoma cruzi* surface molecule gp82 is associated with F-actin disassembly and is inhibited by enteroinvasive *Escherichia coli*. *Microbes Infect* 8: 1502-1512.
- Couto AS, De Lederkremer RM, Colli W, Alves MJM 1993. The glycosylphosphatidylinositol anchor of the trypomastigote-specific Tc-85 glycoprotein from *Trypanosoma cruzi*--metabolic-labeling and structural studies. *Eur J Biochem* 217: 597-602.
- Couto AS, Gonçalves MF, Colli W, Lederkremer RM 1990. The N-linked carbohydrate chain of the 85-kilodalton glycoprotein from *Trypanosoma cruzi* trypomastigotes contains sialyl, fucosyl and galactosyl (alpha 1-3) galactose units. *Mol Biochem Parasitol* 39: 101-107.
- Cross GAM, Takle GB 1993. The surface *trans*-sialidase family of *Trypanosoma cruzi*. *Annu Rev Microbiol* 47: 385-411.
- da Silva CV, Kawashita SY, Probst CM, Dallagiovanna B, Cruz MC, Silva EA, Souto-Pradón T, Krieger MA, Goldenberg S, Briones MRS, Andrews NW, Mortara RA 2009. Characterization of a 21 kDa protein from *Trypanosoma cruzi* associated with mammalian cell invasion. *Microbes Infect*, in press.
- de Lederkremer RM, Casal OL, Alves MJ, Colli W 1980. Evidence for the presence of D-galactofuranose in the lipopeptidophosphoglycan from *Trypanosome cruzi*. Modification and tritium labeling. *FEBS Lett* 116: 25-29.
- de Lederkremer RM, Colli W 1995. Galactofuranose-containing glycoconjugates in trypanosomatids. *Glycobiology* 5: 547-552.
- De Meis J, Ferreira LM, Guillermo LV, Silva EM, Dosreis GA, Lopes MF 2008. Apoptosis differentially regulates mesenteric and subcutaneous lymph node immune responses to *Trypanosoma cruzi*. *Eur J Immunol* 38: 139-146.
- De Souza W 1984. Cell biology of *Trypanosoma cruzi*. *Int Rev Cell Biol* 86: 197-283.
- De Souza W 2000. O parasito e sua interação com os hospedeiros. In *Trypanosoma cruzi e doença de Chagas*. Z Brener, ZA Andrade, M Barral-Netto (eds.), Guanabara Koogan, Rio de Janeiro, p. 88-126.
- De Souza W 2002. Basic cell biology of *Trypanosoma cruzi*. *Curr Pharm Des* 8: 269-285.
- De Souza W 2005. Microscopy and cytochemistry of the biogenesis of the parasitophorous vacuole. *Histochem Cell Biol* 123: 1-18.
- De Souza W 2008. Electron microscopy of trypanosomes - a historical view. *Mem Inst Oswaldo Cruz* 103: 313-325.
- de Titto EH, Araujo FG 1987. Mechanism of cell invasion by *Trypanosoma cruzi*: importance of sialidase activity. *Acta Trop* 44: 273-282.
- Devera R, Fernandes O, Coura JR 2003. Should *Trypanosoma cruzi* be called "cruzi" complex? A review of the parasite diversity and the potential of selecting population after *in vitro* culturing and mice infection. *Mem Inst Oswaldo Cruz* 98: 1-12.
- Dias WB, Fajardo FD, Graca-Souza AV, Freire-de-Lima L, Vieira F, Girard MF, Bouteille B, Previato JO, Mendonca-Previato L, Todeschini AR 2008. Endothelial cell signalling induced by *trans*-sialidase from *Trypanosoma cruzi*. *Cell Microbiol* 10: 88-99.
- Docampo R, Scott DA, Vercesi AE, Moreno SNJ 1995. Intracellular Ca²⁺ storage in acidocalcisomes of *Trypanosoma cruzi*. *Biochem J* 310: 1005-1012.
- Dorta ML, Ferreira AT, Oshiro MEM, Yoshida N 1995. Ca²⁺ signal induced by *Trypanosoma cruzi* metacyclic trypomastigote surface molecules implicated in mammalian cell invasion. *Mol Biochem Parasitol* 73: 285-289.
- Dvorak JA, Howe CL 1976. The attraction of *Trypanosoma cruzi* to vertebrate cells *in vitro*. *J Protozool* 23: 534-537.
- Dvorak JA, Hyde TP 1973. *Trypanosoma cruzi*: interaction with vertebrate cells *in vitro*. Individual interactions at the cellular and subcellular levels. *Exp Parasitol* 34: 268-283.
- Eakin AE, Mills AA, Harth G, McKerrow JH, Craik CS 1992. The sequence, organization and expression of the major cysteine protease (cruzin) from *Trypanosoma cruzi*. *J Biol Chem* 267: 7411-7420.
- El Sayed NM, Myler PJ, Bartholomeu DC, Nilsson D, Aggarwal G, Tran AN, Ghedin E, Worthey EA, Delcher AL, Blandin G, Westenberger SJ, Caler E, Cerqueira GC, Branche C, Haas B, Anupama A, Arner E, Aslund L, Attipoe P, Bontempi E, Bringaud F, Burton P, Cadag E, Campbell DA, Carrington M, Crabtree J, Darban H, Da Silveira JF, de Jong P, Edwards K, Englund PT, Fazelina G, Feldblyum T, Ferella M, Frasch AC, Gull K, Horn D, Hou L, Huang Y, Kindlund E, Klingbeil M, Kluge S, Koo H, Lacerda D, Levin MJ, Lorenzi H, Louie T, Machado CR, McCulloch R, McKenna A, Mizuno Y, Mottram JC, Nelson S, Ochaya S, Osoegawa K, Pai G, Parsons M, Pentony M, Pettersson U, Pop M, Ramirez JL, Rinta J, Robertson L, Salzberg SL, Sanchez DO, Seyler A, Sharma R, Shetty J, Simpson AJ, Sisk E, Tammi MT, Tarleton R, Teixeira S, Van Aken S, Vogt C, Ward PN, Wickstead B, Wortman J, White O, Fraser CM, Stuart KD, Andersson B 2005a. The genome sequence of *Trypanosoma cruzi*, etiologic agent of Chagas disease. *Science* 309: 409-415.

- El Sayed NM, Myler PJ, Blandin G, Berriman M, Crabtree J, Aggarwal G, Caler E, Renaud H, Worthey EA, Hertz-Fowler C, Ghedin E, Peacock C, Bartholomeu DC, Haas BJ, Tran AN, Wortman JR, Alsmark UC, Angiuoli S, Anupama A, Badger J, Bringaud F, Cadag E, Carlton JM, Cerqueira GC, Creasy T, Delcher AL, Djikeng A, Embley TM, Hauser C, Ivens AC, Kummerfeld SK, Pereira-Leal JB, Nilsson D, Peterson J, Salzberg SL, Shallom J, Silva JC, Sundaram J, Westenberger S, White O, Melville SE, Donelson JE, Andersson B, Stuart KD, Hall N 2005b. Comparative genomics of trypanosomatid parasitic protozoa. *Science* 309: 404-409.
- Elias MC, Vargas N, Tomazi L, Pedrosa A, Zingales B, Schenkman S, Briones MR 2005. Comparative analysis of genomic sequences suggests that *Trypanosoma cruzi* CL Brener contains two sets of non-intercalated repeats of satellite DNA that correspond to *T. cruzi* I and *T. cruzi* II types. *Mol Biochem Parasitol* 140: 221-227.
- Engel JC, Dvorak JA, Segura EL, Crane MSJ 1982. *Trypanosoma cruzi*: biological characterization of 19 clones derived from two chagasic patients. I. Growth kinetics in liquid medium. *J Protozool* 29: 555-560.
- Fernandes AB, Mortara RA 2004. Invasion of MDCK epithelial cells with altered expression of Rho GTPases by *Trypanosoma cruzi* amastigotes and metacyclic trypomastigotes of strains from the two major phylogenetic lineages. *Microbes Infect* 6: 460-467.
- Fernandes AB, Neira I, Ferreira AT, Mortara RA 2006. Cell invasion by *Trypanosoma cruzi* amastigotes of distinct infectivities: studies on signaling pathways. *Parasitol Res* 100: 59-68.
- Fernandes MC, Cortez M, Geraldo Yoneyama KA, Straus AH, Yoshida N, Mortara RA 2007a. Novel strategy in *Trypanosoma cruzi* cell invasion: implication of cholesterol and host cell microdomains. *Int J Parasitol* 37: 1431-1441.
- Fernandes MC, L'Abbate C, Kindro AW, Mortara RA 2007b. *Trypanosoma cruzi* cell invasion and traffic: influence of *Coxiella burnetii* and pH in a comparative study between distinct infective forms. *Microb Pathog* 43: 22-36.
- Ferreira D, Cortez M, Atayde VD, Yoshida N 2006. Actin cytoskeleton-dependent and -independent host cell invasion by *Trypanosoma cruzi* is mediated by distinct parasite surface molecules. *Infect Immun* 74: 5522-5528.
- Franke de Cazzulo BM, Martínez J, North MJ, Coombs GH, Cazzulo J-J 1994. Effects of proteinase inhibitors on the growth and differentiation of *Trypanosoma cruzi*. *FEMS Microbiol Lett* 124: 81-86.
- Frasch ACC 1994. *Trans*-sialidase, SAPA amino acid repeats and the relationship between *Trypanosoma cruzi* and the mammalian host. *Parasitology* 108 (Suppl.): S37-S44.
- Freire-de-Lima CG, Nascimento DO, Soares MB, Bozza PT, Castro-Faria-Neto HC, De Mello FG, Dos Reis GA, Lopes MF 2000. Uptake of apoptotic cells drives the growth of a pathogenic trypanosome in macrophages. *Nature* 403: 199-203.
- Frevert U, Schenkman S, Nussenzweig V 1992. Stage-specific expression and intracellular shedding of the cell surface *trans*-sialidase of *Trypanosoma cruzi*. *Infect Immun* 60: 2349-2360.
- Garg N, Postan M, Mensa-Wilmot K, Tarleton RL 1997. Glycosylphosphatidylinositols are required for the development of *Trypanosoma cruzi* amastigotes. *Infect Immun* 65: 4055-4060.
- Garzoni LR, Masuda MO, Capella MM, Lopes AG, Meirelles MN 2003. Characterization of $[Ca^{2+}]_i$ responses in primary cultures of mouse cardiomyocytes induced by *Trypanosoma cruzi* trypomastigotes. *Mem Inst Oswaldo Cruz* 98: 487-493.
- Gaunt MW, Yeo M, Frame IA, Stothard JR, Carrasco HJ, Taylor MC, Mena SS, Veazey P, Miles GA, Acosta N, de Arias AR, Miles MA 2003. Mechanism of genetic exchange in American trypanosomes. *Nature* 421: 936-939.
- Gomes YM, Abath FGC, Furtado AF, Regis LN, Nakasawa M, Montenegro LT, Vouldoukis I, Alfred-Morin C, Monjour L 1995. A monoclonal antibody against blood forms of *Trypanosoma cruzi* lyses the parasite *in vitro* and inhibits host cell invasion. *Appl Biochem Biotechnol* 50: 57-70.
- Grellier P, Vendeville S, Joyeau R, Bastos IM, Drobecq H, Frappier F, Teixeira AR, Schrevel J, Davioud-Charvet E, Sergheraert C, Santana JM 2001. *Trypanosoma cruzi* prolyl oligopeptidase Tc80 is involved in nonphagocytic mammalian cell invasion by trypomastigotes. *J Biol Chem* 276: 47078-47086.
- Gutteridge WE, Cover B, Gaborak M 1978. Isolation of blood and intracellular forms of *Trypanosoma cruzi* from rats and other rodents and preliminary studies on their metabolism. *Parasitology* 76: 159-176.
- Hall BF, Furtado GC, Joiner KA 1991. Characterization of host cell-derived membrane proteins of the vacuole surrounding different intracellular forms of *Trypanosoma cruzi* in J774 cells: evidence for phagocyte receptor sorting during the early stages of parasite entry. *J Immunol* 147: 4313-4321.
- Hall BF, Webster P, Ma AK, Joiner KA, Andrews NW 1992. Desialylation of lysosomal membrane glycoproteins by *Trypanosoma cruzi*: a role for the surface neuraminidase in facilitating parasite entry into the host cell cytoplasm. *J Exp Med* 176: 313-325.
- Hall BS, Tam W, Sen R, Pereira ME 2000. Cell-specific activation of nuclear factor-kappaB by the parasite *Trypanosoma cruzi* promotes resistance to intracellular infection. *Mol Biol Cell* 11: 153-160.
- Harth G, Andrews NW, Mills AA, Engel JC, Smith R, McKerrow JH 1993. Peptide-fluoromethyl ketones arrest intracellular replication and intercellular transmission of *Trypanosoma cruzi*. *Mol Biochem Parasitol* 58: 17-24.
- Henriquez D, Piras R, Piras MM 1981. The effect of surface membrane modification of fibroblastic cells on the entry process of *Trypanosoma cruzi* trypomastigotes. *Mol Biochem Parasitol* 2: 359-366.
- Hoft DF 1996. Differential mucosal infectivity of different life stages of *Trypanosoma cruzi*. *Am J Trop Med Hyg* 55: 360-364.
- Hoft DF, Farrar PL, Kratz-Owens K, Shaffer D 1996. Gastric invasion by *Trypanosoma cruzi* and induction of protective mucosal immune responses. *Infect Immun* 64: 3800-3810.
- Howells RE, Chiari CA 1975. Observations on two strains of *Trypanosoma cruzi* in laboratory mice. *Ann Trop Med Parasitol* 69: 435-438.
- Huang H, Calderon TM, Berman JW, Braunstein VL, Weiss LM, Wittner M, Tanowitz HB 1999. Infection of endothelial cells with *Trypanosoma cruzi* activates NF- κ B and induces vascular adhesion molecule expression. *Infect Immun* 67: 5434-5440.
- Hudson L, Snary D, Morgan SJ 1984. *Trypanosoma cruzi*: continuous cultivation with murine cell lines. *Parasitology* 88: 283-294.
- Junqueira AC, Degraive W, Brandao A 2005. Minicircle organization and diversity in *Trypanosoma cruzi* populations. *Trends Parasitol* 21: 270-272.
- Kahn S, Kahn M, Van Voorhis WC, Goshorn A, Strand A, Hoagland N, Eisen H, Pennathur S 1993. SA85-1 proteins of *Trypanosoma cruzi* lack sialidase activity. *Mol Biochem Parasitol* 60: 149-152.
- Kahn S, Wlekinski M, Aruffo A, Farr A, Coder D, Kahn M 1995. *Trypanosoma cruzi* amastigote adhesion to macrophages is facilitated by the mannose receptor. *J Exp Med* 182: 1243-1258.
- Kahn SJ, Wlekinski M, Ezekowitz RA, Coder D, Aruffo A, Farr A 1996. The major surface glycoprotein of *Trypanosoma cruzi* amastigotes are ligands of the human serum mannose-binding protein. *Infect Immun* 64: 2649-2656.

- Kipnis TL, Calich VL, Dias da Silva W 1979. Active entry of bloodstream forms of *Trypanosoma cruzi* into macrophages. *Parasitology* 78: 89-98.
- Krassner SM, Chang J, Pak S, Luc K-O, Granger B 1993. Absence of transitory $[Ca^{2+}]_i$ flux during early *in vitro* metacyclogenesis of *Trypanosoma cruzi*. *J Protozool* 40: 224-230.
- Krettli AU, Carrington PW, Nussenzweig RS 1979. Membrane-bound antibodies of bloodstream *Trypanosoma cruzi* in mice: strain differences in susceptibility to complement mediated lysis. *Clin Exp Immunol* 3: 1-8.
- Ley V, Andrews NW, Robbins ES, Nussenzweig V 1988. Amastigotes of *Trypanosoma cruzi* sustain an infective cycle in mammalian cells. *J Exp Med* 168: 649-659.
- Ley V, Robbins ES, Nussenzweig V, Andrews NW 1990. The exit of *Trypanosoma cruzi* from the phagosome is inhibited by raising the pH of acidic compartments. *J Exp Med* 171: 401-413.
- Libby P, Alroy J, Pereira MEA 1986. A neuraminidase from *Trypanosoma cruzi* removes sialic acid from the surface of mammalian myocardial and endothelial cells. *J Clin Invest* 77: 127-135.
- Lima MF, Kierszenbaum F 1982. Biochemical requirements for intracellular invasion by *Trypanosoma cruzi*: protein synthesis. *J Protozool* 29: 566-570.
- Lima MF, Villalta F 1988. Host-cell attachment by *Trypanosoma cruzi*: identification of an adhesion molecule. *Biochem Biophys Res Commun* 155: 256-262.
- Lopes MF, Guillermo LV, Silva EM 2007. Decoding caspase signaling in host immunity to the protozoan *Trypanosoma cruzi*. *Trends Immunol* 28: 366-372.
- Low HP, Paulin JJ, Keith CH 1992. *Trypanosoma cruzi* infection of BSC-1 fibroblast cells causes cytoskeletal disruption and changes in intracellular calcium levels. *J Protozool* 39: 463-470.
- Lu B, Alroy J, Luquetti AO, Pereira-Perrin M 2008. Human autoantibodies specific for neurotrophin receptors TrkA, TrkB and TrkC protect against lethal *Trypanosoma cruzi* infection in mice. *Am J Pathol* 173: 1406-1414.
- Luder CG, Gross U, Lopes MF 2001. Intracellular protozoan parasites and apoptosis: diverse strategies to modulate parasite-host interactions. *Trends Parasitol* 17: 480-486.
- Magdesian MH, Giordano R, Ulrich H, Juliano MA, Juliano L, Schumacher RI, Colli W, Alves MJM 2001. Infection by *Trypanosoma cruzi*: identification of a parasite ligand and its host-cell receptor. *J Biol Chem* 276: 19382-19389.
- Magdesian MH, Tonelli RR, Fessel MR, Silveira MS, Schumacher RI, Linden R, Colli W, Alves MJ 2007. A conserved domain of the gp85/trans-sialidase family activates host cell extracellular signal-regulated kinase and facilitates *Trypanosoma cruzi* infection. *Exp Cell Res* 313: 210-218.
- Malaga S, Yoshida N 2001. Targeted reduction in expression of *Trypanosoma cruzi* surface glycoprotein gp90 increases parasite infectivity. *Infect Immun* 69: 353-359.
- Manning-Cela R, Cortes A, Gonzalez-Rey E, Van Voorhis WC, Swindle J, Gonzalez A 2001. LYT1 protein is required for efficient *in vitro* infection by *Trypanosoma cruzi*. *Infect Immun* 69: 3916-3923.
- Manque PM, Eichinger D, Juliano MA, Juliano L, Araya JE, Yoshida N 2000. Characterization of the cell adhesion site of *Trypanosoma cruzi* metacyclic stage surface glycoprotein gp82. *Infect Immun* 68: 478-484.
- Mbawa ZR, Webster P, Lonsdale-Eccles JD 1991. Immunolocalization of a cysteine protease within the lysosomal system of *Trypanosoma congolense*. *Eur J Cell Biol* 56: 243-250.
- McKerrow JH 1991. New insights into the structure of a *Trypanosoma cruzi* protease. *Parasitol Today* 7: 132-133.
- Meirelles MNL, Araujo-Jorge TC, De Souza W 1982a. Interaction of *Trypanosoma cruzi* with macrophages *in vitro*: dissociation of the attachment and internalization phases by low temperature and cytochalasin B. *Z Parasitenkd* 68: 7-14.
- Meirelles MNL, Araujo-Jorge TC, De Souza W, Moreira AL, Barbosa HS 1987. *Trypanosoma cruzi*: phagolysosomal fusion after invasion into non professional phagocytic cells. *Cell Struct Funct* 12: 387-393.
- Meirelles MNL, Araujo-Jorge TC, Miranda CF, De Souza W, Barbosa HS 1986. Interaction of *Trypanosoma cruzi* with heart muscle cells: ultrastructural and cytochemical analysis of endocytic vacuole formation and effect upon myogenesis *in vitro*. *Eur J Cell Biol* 41: 198-206.
- Meirelles MNL, Chiari E, De Souza W 1982b. Interaction of bloodstream, tissue-culture-derived and axenic culture-derived trypomastigotes of *Trypanosoma cruzi* with macrophages. *Acta Trop* 39: 195-203.
- Meirelles MNL, Juliano L, Carmona E, Silva SG, Costa EM, Murta ACM, Scharfstein J 1992. Inhibitors of the major cysteinyl proteinase (GP57/51) impair host cell invasion and arrest the intracellular development of *Trypanosoma cruzi* *in vitro*. *Mol Biochem Parasitol* 52: 175-184.
- Meirelles MNL, Pereira MC, Singer RH, Soeiro MN, Garzoni LR, Silva DT, Barbosa HS, Araujo-Jorge TC, Masuda MO, Capella MA, Lopes AG, Vermelho AB 1999. *Trypanosoma cruzi*-cardiomyocytes: new contributions regarding a better understanding of this interaction. *Mem Inst Oswaldo Cruz* 94 (Suppl. 1): 149-152.
- Melo RC, Brener Z 1978. Tissue tropism of different *Trypanosoma cruzi* strains. *J Parasitol* 64: 475-482.
- Melo TG, Almeida DS, Meirelles MNL, Pereira MCS 2004. *Trypanosoma cruzi* infection disrupts vinculin costamers in cardiomyocytes. *Eur J Cell Biol* 83: 531-540.
- Melo-Jorge M, Pereira-Perrin M 2007. The Chagas' disease parasite *Trypanosoma cruzi* exploits nerve growth factor receptor TrkA to infect mammalian hosts. *Cell Host Microbe* 1: 251-261.
- Meyer H 1942. Culturas de tecido nervoso infectadas por *Szotrypanum cruzi*. *An Acad Bras Cienc* 14: 253-256.
- Meyer H, Xavier de Oliveira M 1948. Cultivation of *Trypanosoma cruzi* in tissue cultures: a four-year study. *Parasitology* 39: 91-94.
- Milder RV, Kloetzel JK 1980. The development of *Trypanosoma cruzi* in macrophages *in vitro*. Interaction with lysosomes and host cell fate. *Parasitology* 80: 139-145.
- Miles MA 1974. Cloning *Trypanosoma cruzi*. *Trans R Soc Trop Med Hyg* 68: 256-260.
- Ming M, Chuenkova M, Ortega-Barria E, Pereira ME 1993. Mediation of *Trypanosoma cruzi* invasion by sialic acid on the host cell and trans-sialidase on the trypanosome. *Mol Biochem Parasitol* 59: 243-252.
- Ming M, Ewen ME, Pereira MEA 1995. Trypanosome invasion of mammalian cells requires activation of the TGF β signaling pathway. *Cell* 82: 287-296.
- Moreno SNJ, Silva J, Vercesi AE, Docampo R 1994. Cytosolic-free calcium elevation in *Trypanosoma cruzi* is required for cell invasion. *J Exp Med* 180: 1535-1540.
- Moreno SNJ, Vercesi AE, Pignataro OP, Docampo R 1992. Calcium homeostasis in *Trypanosoma cruzi* amastigotes: presence of inositol phosphates and lack of an inositol 1,4,5-trisphosphate-sensitive calcium pool. *Mol Biochem Parasitol* 52: 251-261.

- Morris SA, Tanowitz H, Hatcher V, Bilezikian JP, Wittner M 1988. Alterations in intracellular calcium following infection of human endothelial cells with *Trypanosoma cruzi*. *Mol Biochem Parasitol* 29: 213-221.
- Morris SA, Wittner M, Weiss L, Hatcher VB, Tanowitz HB, Bilezikian JP, Gordon PB 1990. Extracellular matrix derived from *Trypanosoma cruzi* infected endothelial cells directs phenotypic expression. *J Cell Physiol* 145: 340-346.
- Mortara RA 1991. *Trypanosoma cruzi*: amastigotes and trypomastigotes interact with different structures on the surface of HeLa cells. *Exp Parasitol* 73: 1-14
- Mortara RA, Andreoli WK, Fernandes MC, da Silva CV, Fernandes AB, L'Abbate C, Da Silva S 2008. Host cell actin remodeling in response to *Trypanosoma cruzi*: trypomastigote versus amastigote entry. *Subcell Biochem* 47: 101-109.
- Mortara RA, Andreoli WK, Taniwaki NN, Fernandes AB, Silva CV, Fernandes MC, L'Abbate C, Silva S 2005. Mammalian cell invasion and intracellular trafficking by *Trypanosoma cruzi* infective forms. *An Acad Bras Cienc* 77: 77-94.
- Mortara RA, Silva S, Araguth MF, Blanco SA, Yoshida N 1992. Polymorphism of the 35- and 50-kilodalton surface glycoconjugates of *Trypanosoma cruzi* metacyclic trypomastigotes. *Infect Immun* 60: 4673-4678.
- Nde PN, Simmons KJ, Kleshchenko YY, Pratap S, Lima MF, Villalta F 2006. Silencing of the laminin gamma-1 gene blocks *Trypanosoma cruzi* infection. *Infect Immun* 74: 1643-1648.
- Neira I, Ferreira AT, Yoshida N 2002. Activation of distinct signal transduction pathways in *Trypanosoma cruzi* isolates with differential capacity to invade host cells. *Int J Parasitol* 32: 405-414.
- Nogueira N 1983. Host and parasite factors affecting the invasion of mononuclear phagocytes by *Trypanosoma cruzi*. *CIBA Found Symp* 99: 52-73.
- Nogueira N, Cohn Z 1976. *Trypanosoma cruzi*: mechanism of entry and intracellular fate in mammalian cells. *J Exp Med* 143: 1402-1420.
- Noisin EL, Villalta F 1989. Fibronectin increases *Trypanosoma cruzi* amastigote binding to and uptake by murine macrophages and human monocytes. *Infect Immun* 57: 1030-1034.
- Ochatt CM, Mayorga LS, Isola EL, Wilkowsky S, Torres HN, Tellez-Iñón MT 1997. Inhibition of early endosome fusion by *Trypanosoma cruzi*-infected macrophage cytosol. *J Euk Microbiol* 44: 497-502.
- Ortega-Barria E, Pereira MEA 1991. A novel *Trypanosoma cruzi* heparin-binding protein promotes fibroblast adhesion and penetration of engineered bacteria and trypanosomes into mammalian cells. *Cell* 67: 411-421.
- Ouaisi MA, Afchain D, Capron A, Grimaud JA 1984. Fibronectin receptors on *Trypanosoma cruzi* trypomastigotes and their biological function. *Nature* 308: 380-382.
- Ouaisi MA, Cornette J, Capron A 1985. *Trypanosoma cruzi*: modulation of parasite-cell interaction by plasma fibronectin. *Eur J Immunol* 15: 1096-1101.
- Ouaisi MA, Taibi A, Loyens M, Martin U, Afchain D, Maidana C, Caudioti C, Cornette J, Martelleur A, Velge P, Marty B, Capron A 1991. *Trypanosoma cruzi*: a carbohydrate epitope defined by a monoclonal antibody as a possible marker of the acute phase of human chagas' disease. *Am J Trop Med Hyg* 45: 214-225.
- Pan SC 1978a. *Trypanosoma cruzi*: cultivation in macromolecule-free semisynthetic and synthetic media. *Exp Parasitol* 46: 108-112.
- Pan SCT 1978b. *Trypanosoma cruzi*: *in vitro* interactions between cultured amastigotes and human skin-muscle cells. *Exp Parasitol* 45: 274-286.
- Pan SC 1978c. *Trypanosoma cruzi*: ultrastructure of morphogenesis *in vitro* and *in vivo*. *Exp Parasitol* 46: 92-107.
- Parodi AJ, Labriola C, Cazzulo JJ 1995. The presence of complex-type oligosaccharides at the C-terminal domain glycosylation site of some molecules of cruzipain. *Mol Biochem Parasitol* 69: 247-255.
- Parodi AJ, Lederkremer GZ, Mendelzon DH 1983. Protein glycosylation in *Trypanosoma cruzi*. The mechanism of glycosylation and structure of protein-bound oligosaccharides. *J Biol Chem* 258: 5589-5595.
- Parodi AJ, Pollevick GD, Mautner M, Buschiazzo A, Sanchez DO, Frasch ACC 1992. A major *Trypanosoma cruzi* antigen has the unique *trans*-sialidase activity and the epitopes in separate domains. *EMBO J* 11: 1705-1710.
- Parsons M, Worthey EA, Ward PN, Mottram JC 2005. Comparative analysis of the kinomes of three pathogenic trypanosomatids: *Leishmania major*, *Trypanosoma brucei* and *Trypanosoma cruzi*. *BMC Genomics* 6: 127.
- Pereira MCS, Costa M, Chagas Filho C, De Meirelles MNL 1993. Myofibrillar breakdown and cytoskeletal alterations in heart muscle cells during invasion by *Trypanosoma cruzi*: immunological and ultrastructural study. *J Submicrosc Cytol Pathol* 25: 559-569.
- Pereira MCS, Singer RH, Meirelles MNL 2000. *Trypanosoma cruzi* infection affects actin mRNA regulation in heart muscle cells. *J Euk Microbiol* 47: 271-279.
- Pereira MEA 1983. A developmentally regulated neuraminidase activity in *Trypanosoma cruzi*. *Science* 219: 1444-1446.
- Petry K, Schottelius J, Baltz T 1987. Purification of metacyclic trypomastigotes of *Trypanosoma cruzi* and *Trypanosoma dionisii* from culture using an epimastigote-specific monoclonal antibody. *Parasitol Res* 73: 224-227.
- Piras MM, Henriquez D, Piras R 1985. The effect of proteolytic enzymes and protease inhibitors on the interaction *Trypanosoma cruzi* - fibroblasts. *Mol Biochem Parasitol* 14: 151-163.
- Piras MM, Henriquez D, Piras R 1987. The effect of fetuin and other sialoglycoproteins on the *in vitro* penetration of *Trypanosoma cruzi* trypomastigotes into fibroblastic cells. *Mol Biochem Parasitol* 22: 135-143.
- Piras R, Piras MM, Henriquez D 1982. The effect of inhibitors of macromolecular biosynthesis on the *in vitro* infectivity and morphology of *Trypanosoma cruzi* trypomastigotes. *Mol Biochem Parasitol* 6: 83-92.
- Piras R, Piras MM, Henriquez D 1983. *Trypanosoma cruzi*-fibroblastic cell interactions necessary for cellular invasion. *CIBA Found Symp* 99: 31-51.
- Poncini CV, Alba Soto CD, Batalla E, Solana ME, Gonzalez Cappa SM 2008. *Trypanosoma cruzi* induces regulatory dendritic cells *in vitro*. *Infect Immun* 76: 2633-2641.
- Previato JO, Andrade AF, Pessolani MC, Mendonça-Previato L 1985. Incorporation of sialic acid into *Trypanosoma cruzi* macromolecules A proposal for a new metabolic route. *Mol Biochem Parasitol* 16: 85-96.
- Previato JO, Jones C, Gonçalves LPB, Wait R, Travassos LR, Mendonça-Previato L 1994. O-glycosidically linked *N*-acetylglucosamine-bound oligosaccharides from glycoproteins of *Trypanosoma cruzi*. *Biochem J* 301: 151-159.
- Procópio DO, Barros HC, Mortara RA 1999. Actin-rich structures formed during the invasion of cultured cells by infective forms of *Trypanosoma cruzi*. *Eur J Cell Biol* 78: 911-924.
- Procópio DO, Silva S, Cunningham CC, Mortara RA 1998. *Trypanosoma cruzi*: effect of protein kinase inhibitors and cytoskeletal

- protein organization and expression on host cell invasion by amastigotes and metacyclic trypomastigotes. *Exp Parasitol* 90: 1-13.
- Robello C, Gamarro F, Castanys S, Alvarez-Valin F 2000. Evolutionary relationships in *Trypanosoma cruzi*: molecular phylogenetics supports the existence of a new major lineage of strains. *Gene* 246: 331-338.
- Rodriguez A, Martinez I, Chung A, Berlot CH, Andrews NW 1999. cAMP regulates Ca²⁺-dependent exocytosis of lysosomes and lysosome-mediated cell invasion by trypanosomes. *J Biol Chem* 274: 16754-16759.
- Rodriguez A, Webster P, Ortego J, Andrews NW 1997. Lysosomes behave as Ca²⁺-regulated exocytic vesicles in fibroblasts and epithelial cells. *J Cell Biol* 137: 93-104.
- Romano PS, Arboit MA, Vazquez CL, Colombo MI 2009. The autophagic pathway is a key component in the lysosomal dependent entry of *Trypanosoma cruzi* into the host cell. *Autophagy* 5: 6-18.
- Rubin-de-Celis SS, Uemura H, Yoshida N, Schenkman S 2006. Expression of trypomastigote trans-sialidase in metacyclic forms of *Trypanosoma cruzi* increases parasite escape from its parasitophorous vacuole. *Cell Microbiol* 8: 1888-1898.
- Ruiz RC, Rigoni VL, Gonzalez JC, Yoshida N 1993. The 35/50 kDa surface antigen of *Trypanosoma cruzi* metacyclic trypomastigotes, an adhesion molecule involved in host cell invasion. *Parasite Immunol* 15: 121-125.
- Santana JM, Grellier P, Schrevel J, Teixeira AR 1997. A *Trypanosoma cruzi*-secreted 80 kDa proteinase with specificity for human collagen types I and IV. *Biochem J* 325: 129-137.
- Santos CC, Sant'anna C, Terres A, Cunha-e-Silva NL, Scharfstein J, de Lima AP 2005. Chagasin, the endogenous cysteine-protease inhibitor of *Trypanosoma cruzi*, modulates parasite differentiation and invasion of mammalian cells. *J Cell Sci* 118: 901-915.
- Scharfstein J, Lima AP 2008. Roles of naturally occurring protease inhibitors in the modulation of host cell signaling and cellular invasion by *Trypanosoma cruzi*. *Subcell Biochem* 47: 140-154.
- Scharfstein J, Monteiro AC, Schmitz V, Svensjo E 2008. Angiotensin-converting enzyme limits inflammation elicited by *Trypanosoma cruzi* cysteine proteases: a peripheral mechanism regulating adaptive immunity via the innate kinin pathway. *Biol Chem* 389: 1015-1024.
- Scharfstein J, Schechter M, Senna M, Peralta JM, Mendonça-Previato L, Miles MA 1986. *Trypanosoma cruzi*: characterization and isolation of 57/51.000 m.w. surface glycoprotein (GP57/51) expressed in epimastigotes and bloodstream trypomastigotes. *J Immunol* 137: 1836-1842.
- Scharfstein J, Schmitz V, Morandi V, Capella MM, Lima AP, Morrot A, Juliano L, Muller-Esterl W 2000. Host cell invasion by *Trypanosoma cruzi* is potentiated by activation of bradykinin B(2) receptors. *J Exp Med* 192: 1289-1300.
- Scharfstein J, Schmitz V, Svensjo E, Granato A, Monteiro AC 2007. Kininogens coordinate adaptive immunity through the proteolytic release of bradykinin, an endogenous danger signal driving dendritic cell maturation. *Scand J Immunol* 66: 128-136.
- Schenkman RPF, Vandekerckhove F, Schenkman S 1993. Mammalian cell sialic acid enhances invasion by *Trypanosoma cruzi*. *Infect Immun* 61: 898-902.
- Schenkman S, Andrews NW, Nussenzweig V, Robbins ES 1988. *Trypanosoma cruzi* invade a mammalian epithelial cell in a polarized manner. *Cell* 55: 157-165.
- Schenkman S, Carvalho LP, Nussenzweig V 1992. *Trypanosoma cruzi* trans-sialidase and neuraminidase activities can be mediated by the same enzymes. *J Exp Med* 175: 567-575.
- Schenkman S, Diaz C, Nussenzweig V 1991a. Attachment of *Trypanosoma cruzi* trypomastigotes to receptors at restricted cell surface domains. *Exp Parasitol* 72: 76-86.
- Schenkman S, Eichinger D, Pereira MEA, Nussenzweig V 1994. Structural and functional properties of *Trypanosoma trans-sialidase*. *Annu Rev Microbiol* 48: 499-523.
- Schenkman S, Ferguson MA, Heise N, de Almeida ML, Mortara RA, Yoshida N 1993. Mucin-like glycoproteins linked to the membrane by glycosylphosphatidylinositol anchor are the major acceptors of sialic acid in a reaction catalyzed by trans-sialidase in metacyclic forms of *Trypanosoma cruzi*. *Mol Biochem Parasitol* 59: 293-303.
- Schenkman S, Jiang M-S, Hart GW, Nussenzweig V 1991b. A novel cell surface trans-sialidase of *Trypanosoma cruzi* generates a stage-specific epitope required for invasion of mammalian cells. *Cell* 65: 1117-1125.
- Schenkman S, Mortara RA 1992. HeLa cells extend and internalize pseudopodia during active invasion by *Trypanosoma cruzi* trypomastigotes. *J Cell Sci* 101: 895-905.
- Schenkman S, Robbins ES, Nussenzweig V 1991c. Attachment of *Trypanosoma cruzi* to mammalian cells requires parasite energy, and invasion can be independent of the target cell cytoskeleton. *Infect Immun* 59: 645-654.
- Silva CV, Luquetti AO, Rassi A, Mortara RA 2006. Involvement of Ssp-4-related carbohydrate epitopes in mammalian cell invasion by *Trypanosoma cruzi* amastigotes. *Microbes Infect* 8: 2120-2129.
- Silva EO, Saraiva EMB, De Souza W, Souto-Padrón T 1998. Cell surface characterization of amastigotes of *Trypanosoma cruzi* obtained from different sources. *Parasitol Res* 84: 257-263.
- Silva JS, Twardzik DR, Reed SG 1991. Regulation of *Trypanosoma cruzi* infections *in vitro* and *in vivo* by transforming growth factor beta (TGF-beta). *J Exp Med* 174: 539-545.
- Silva LHP, Nussenzweig V 1953. Sobre uma cepa de *Trypanosoma cruzi* altamente virulenta para o camundongo branco. *Folia Clin Biol* 20: 191-203.
- Snary D 1985. Receptors and recognition mechanisms of *Trypanosoma cruzi*. *Trans R Soc Trop Med Hyg* 79: 587-590.
- Souto RP, Fernandes O, Macedo AM, Campbell DA, Zingales B 1996. DNA markers define two major phylogenetic lineages of *Trypanosoma cruzi*. *Mol Biochem Parasitol* 83: 141-152.
- Souto-Padrón T, Almeida IC, De Souza W, Travassos LR 1994. Distribution of alpha-galactosyl-containing epitopes on *Trypanosoma cruzi* trypomastigote and amastigote forms from infected Vero cells detected by chagasic antibodies. *J Eukaryot Microbiol* 41: 47-54.
- Stecconi-Silva RB, Andreoli WK, Mortara RA 2003. Parameters affecting cellular invasion and escape from the parasitophorous vacuole by different infective forms of *Trypanosoma cruzi*. *Mem Inst Oswaldo Cruz* 98: 953-958.
- Tan H, Andrews NW 2002. Don't bother to knock--the cell invasion strategy of *Trypanosoma cruzi*. *Trends Parasitol* 18: 427-428.
- Taniwaki NN, Andreoli WK, Calabrese KS, Silva S, Mortara RA 2005. Disruption of myofibrillar proteins in cardiac muscle of *Calomys callosus* chronically infected with *Trypanosoma cruzi* and treated with immunosuppressive agent. *Parasitol Res* 97: 323-331.
- Taniwaki NN, Machado FS, Massensini AR, Mortara RA 2006. *Trypanosoma cruzi* disrupts myofibrillar organization and intracellular calcium levels in mouse neonatal cardiomyocytes. *Cell Tissue Res* 324: 489-496.

- Tanowitz H, Wittner M, Kress Y, Bloom B 1975. Studies of *in vitro* infection by *Trypanosoma cruzi*. I. Ultrastructural studies on the invasion of macrophages and L-cells. *Am J Trop Med Hyg* 24: 25-33.
- Tardieux I, Nathanson MH, Andrews NW 1994. Role in host cell invasion of *Trypanosoma cruzi*-induced cytosolic-free Ca²⁺ transients. *J Exp Med* 179: 1017-1022.
- Tardieux I, Webster P, Ravesloot J, Boron W, Lunn JA, Heuser JE, Andrews NW 1992. Lysosome recruitment and fusion are early events required for trypanosome invasion of mammalian cells. *Cell* 71: 1117-1130.
- Tarleton RL 2007. Immune system recognition of *Trypanosoma cruzi*. *Curr Opin Immunol* 19: 430-434.
- Todorov AG, Einicker-Lamas M, De Castro SL, Oliveira MM, Guilherme A 2000. Activation of host cell phosphatidylinositol 3-kinases by *Trypanosoma cruzi* infection. *J Biol Chem* 275: 32182-32186.
- Tonelli RR, Silber AM, Almeida-de-Faria M, Hirata IY, Colli W, Alves MJ 2004. L-proline is essential for the intracellular differentiation of *Trypanosoma cruzi*. *Cell Microbiol* 6: 733-741.
- Travassos LR, Almeida IC 1993. Carbohydrate immunity in American trypanosomiasis. *Springer Semin Immunopathol* 15: 183-204.
- Ulrich H, Magdesian MH, Alves MJ, Colli W 2002. *In vitro* selection of RNA aptamers that bind to cell adhesion receptors of *Trypanosoma cruzi* and inhibit cell invasion. *J Biol Chem* 277: 20756-20762.
- Umezawa ES, Milder RV, Abrahamsohn IA 1985. *Trypanosoma cruzi* amastigotes: development *in vitro* and infectivity *in vivo* of the forms isolated from spleen and liver. *Acta Trop* 42: 25-32.
- Vieira MCF, Carvalho TU, De Souza W 1994. Effect of protein kinase inhibitors on the invasion process of macrophages by *Trypanosoma cruzi*. *Biochem Biophys Res Commun* 203: 967-971.
- Villalta F, Kierszenbaum F 1982. Growth of isolated amastigotes of *Trypanosoma cruzi* in cell-free medium. *J Protozool* 29: 570-576.
- Villalta F, Kierszenbaum F 1983. Role of cell surface mannose residues in host cell invasion by *Trypanosoma cruzi*. *Biochim Biophys Acta* 736: 39-44.
- Villalta F, Kierszenbaum F 1984. Host cell invasion by *Trypanosoma cruzi*: role of cell surface galactose residues. *Biochem Biophys Res Commun* 119: 228-235.
- Villalta F, Kierszenbaum F 1985. Role of surface N-acetylglucosamine residues on host cell infection by *Trypanosoma cruzi*. *Biochim Biophys Acta* 845: 216-222.
- Villalta F, Lima MF, Howard SA, Zhou L, Ruiz-Ruano A 1992a. Purification of a *Trypanosoma cruzi* trypomastigote 60-kilodalton surface glycoprotein that primes and activates murine lymphocytes. *Infect Immun* 60: 3025-3032.
- Villalta F, Lima MF, Ruiz-Ruano A, Zhou L 1992b. Attachment of *Trypanosoma cruzi* to host cells: a monoclonal antibody recognizes a trypomastigote stage-specific epitope on the gp 83 required for parasite attachment. *Biochem Biophys Res Commun* 182: 6-13.
- von Kreuter BF, Santos Buch CA 1989. Modulation of *Trypanosoma cruzi* adhesion to host muscle cell membranes by ligands of muscarinic cholinergic and beta adrenergic receptors. *Mol Biochem Parasitol* 36: 41-50.
- Wilkowsky SE, Barbieri MA, Stahl P, Isola ELD 2001. *Trypanosoma cruzi*: phosphatidylinositol 3-Kinase and protein kinase B activation is associated with parasite invasion. *Exp Cell Res* 264: 211-218.
- Wilkowsky SE, Barbieri MA, Stahl PD, Isola ELD 2002. Regulation of *Trypanosoma cruzi* invasion of nonphagocytic cells by the endocytically active GTPases dynamin, Rab5 and Rab7. *Biochem Biophys Res Commun* 291: 516-521.
- Wilkowsky SE, Wainszelbaum MJ, Isola ELD 1996. *Trypanosoma cruzi*: participation of intracellular Ca²⁺ during metacyclic trypomastigote-macrophage interaction. *Biochem Biophys Res Commun* 222: 386-389.
- Wirth JJ, Kierszenbaum F 1984. Fibronectin enhances macrophage association with invasive forms of *Trypanosoma cruzi*. *J Immunol* 133: 460-464.
- Woolsey AM, Sunwoo L, Petersen CA, Brachmann SM, Cantley LC, Burleigh BA 2003. Novel PI 3-kinase-dependent mechanisms of trypanosome invasion and vacuole maturation. *J Cell Sci* 116: 3611-3622.
- Yoshida N 2002. *Trypanosoma cruzi* cell invasion mechanisms. In *World class parasites. Vol. IV: American trypanosomiasis*, KM Tyler, MA Miles (eds.), Kluwer Academic Publishers, Norwell, p. 69-79.
- Yoshida N 2006. Molecular basis of mammalian cell invasion by *Trypanosoma cruzi*. *An Acad Bras Cienc* 78: 87-111.
- Yoshida N 2008. *Trypanosoma cruzi* infection by oral route: how the interplay between parasite and host components modulates infectivity. *Parasitol Int* 57: 105-109.
- Yoshida N, Blanco SA, Araguth MF, Russo M, Gonzalez JC 1990. The stage-specific 90-kilodalton surface antigen of metacyclic trypomastigotes of *Trypanosoma cruzi*. *Mol Biochem Parasitol* 39: 39-46.
- Yoshida N, Cortez M 2008. *Trypanosoma cruzi*: parasite and host cell signaling during the invasion process. *Subcell Biochem* 47: 82-91.
- Yoshida N, Dorta ML, Ferreira AT, Oshiro ME, Mortara RA, Acosta-Serrano A, Favoreto JS 1997. Removal of sialic acid from mucin-like surface molecules of *Trypanosoma cruzi* metacyclic trypomastigotes enhances parasite-host cell interaction. *Mol Biochem Parasitol* 84: 57-67.
- Yoshida N, Favoreto Jr S, Ferreira AT, Manque PM 2000. Signal transduction induced in *Trypanosoma cruzi* metacyclic trypomastigotes during the invasion of mammalian cells. *Braz J Med Biol Res* 33: 269-278.
- Zingales B, Andrews NW, Kuwajima VY, Colli W 1982. Cell surface antigens of *Trypanosoma cruzi*: possible correlation with the interiorization process in mammalian cells. *Mol Biochem Parasitol* 6: 111-124.
- Zingales B, Colli W 1985. *Trypanosoma cruzi*: interaction with host cells. *Curr Top Microbiol Immunol* 117: 129-152.
- Zwirner NW, Malchiodi EL, Chiaramonte MG, Fossati CA 1994. A lytic monoclonal antibody to *Trypanosoma cruzi* bloodstream trypomastigotes which recognizes an epitope expressed in tissues affected in Chagas' disease. *Infect Immun* 62: 2483-2489.