

Residual effects of successive exposure of soybean *Bradyrhizobium* strains to aluminium on solid defined medium⁽¹⁾

Rubens José Campo⁽²⁾ and Martin Wood⁽³⁾

Abstract – The aim of these studies was to investigate whether residual toxic effects of exposing soybean root nodule bacteria to Al in a solid defined media (SDM) alter tolerance to Al, survival, sensitivity to antibiotics, N₂ fixation effectiveness and genetic diversity of *Bradyrhizobium* strains. After being exposed four times to Al, strains showed variation in Al tolerance but there was no evidence of change in their original Al tolerance, sensitivity to the antibiotics or genetic diversity. Exposure of *Bradyrhizobium* strains to SDM plus Al did not alter biological N₂ fixation effectiveness of five strains. Strain SEMIA 587 showed a reduction in its N₂ fixation effectiveness but it seems that it was just a superficial toxic effect because one single passage through the plant eliminated this effect. Residual Al did not cause increases in Al tolerance and reductions in the survival and N₂ fixation effectiveness of *Bradyrhizobium* strains USDA 143, SEMIA 586, SEMIA 5019, SEMIA 5039 and SEMIA 5073. It also did not alter the resistance to antibiotics of strains USDA 143, SEMIA 5039 and SEMIA 5073, and the genetic diversity of the strains SEMIA 587 and SEMIA 5019.

Index terms: nitrogen fixation, antibiotics, resistance to chemicals, genetic variation.

Efeito residual de sucessivas exposições de estirpes de *Bradyrhizobium* da soja ao alumínio em meio de cultura sólido

Resumo – O objetivo deste trabalho foi investigar se os efeitos tóxicos residuais do Al afetam a tolerância Al, sobrevivência, sensibilidade a antibióticos, eficiência de fixação de nitrogênio e diversidade genética de estirpes de *Bradyrhizobium*. Quando os nódulos de bactérias da raiz de soja foram expostos ao Al, em meio sólido por quatro vezes consecutivas, as estirpes de *Bradyrhizobium* mostraram variações na tolerância ao Al. Não houve alterações nos níveis originais de tolerância ao Al, sobrevivência, sensibilidade aos antibióticos testados e diversidade genética. Cinco das estirpes expostas ao Al não alteraram a eficiência de fixação de nitrogênio. A estirpe SEMIA 587, por sua vez, mostrou uma redução da sua eficiência de fixação de N₂, mas apenas superficial, porque uma simples passagem através da planta eliminou esse efeito tóxico. Sucessivas exposições de estirpes de *Bradyrhizobium* ao Al não aumentam a tolerância ao Al, não reduzem a sobrevivência e a eficiência de fixação simbiótica do N₂ das estirpes USDA 143, SEMIA 586, SEMIA 5019, SEMIA 5039 e SEMIA 5073, não alteram a tolerância a antibióticos das estirpes USDA 143, SEMIA 5039 e SEMIA 5073 e não alteram a diversidade genética das estirpes SEMIA 587 e SEMIA 5019.

Termos para indexação: fixação do nitrogênio, antibióticos, resistência a produtos químicos, variação genética.

⁽¹⁾Accepted for publication on April 9, 2001.

Extracted from Ph.D. thesis presented by the first author in the Department of Soil Science at The Reading University, Reading, UK.

⁽²⁾Embrapa-Centro Nacional de Pesquisa de Soja, Caixa Postal 231, CEP 86001-970 Londrina, PR, Brazil. E-mail: rjcampo@cnpso.embrapa.br

⁽³⁾The University of Reading, Department of Soil Science, P.O. Box 233, Reading, RG6 6DW, UK. E-mail: m.wood@reading.ac.uk

Introduction

The efficiency of the interaction between *Bradyrhizobium* and soybean depends not only on bacteria and plant but also on a range of factors, such as toxic effects of acid soils (pH, Mn and Al), soil nutrient levels (N, P, K, Ca, Mg and micronutrients), soil temperature, soil moisture and heavy metals.

Studies regarding toxic effects of Al to *Rhizobium* and *Bradyrhizobium* have concentrated on selecting strains more Al tolerant. Little attention has been given to the effects of Al on the bacteria. Flis et al. (1993) presented an overview of the toxic effects of Al on the root nodule bacteria. There is uncertainty about which of the Al species is toxic to root nodule bacteria. Moreover, variation in the media used in different studies makes comparisons of effects of Al difficult. For example, any slight variation in pH will affect the ionic species of Al in the media.

Data showing the direct toxic effect of Al to the symbiotic process of N₂ fixation in soybean have been reported by Alva et al. (1987, 1988) and Taylor et al. (1991). There are few reports of residual toxic effects of Al on the bacterium in culture media causing permanent alterations in its N₂ fixing ability which have been linked to damage in its DNA (Johnson & Wood, 1990) and mutagenesis (Octive et al., 1991, 1994).

The objective of this study was to investigate whether the successive exposure of *Bradyrhizobium* strains to Al on solid defined medium alters their survival, tolerance to Al, antibiotic resistance, N₂ fixation effectiveness and genetic diversity.

Material and Methods

Selection, growth and maintenance of strains

Bradyrhizobium japonicum strain USDA 143 from The Reading University, *Bradyrhizobium japonicum* strain SEMIA 586 and *Bradyrhizobium elkanii* strains (SEMIA 587, SEMIA 5019, SEMIA 5039 and SEMIA 5073) brought from Instituto de Pesquisas Agronômicas (Ipagro), Porto Alegre, RS, Brazil, were maintained at 4°C on yeast extract mannitol (YEM) agar plus 3 g L⁻¹ of CaCO₃ (Vincent, 1970). A loopful of each culture was aseptically transferred, streaked on sterile Petri dishes containing 20 mL of YEM agar and incubated at 26°C for colony development. Single colonies from each strain were picked up, grown in Universal bottles containing 10 mL of YEM broth and incubated at 26°C for eight days until turbidity. A loopful of each strain was transferred to slopes of YEM agar, incubated for at least eight days and stored at 4°C.

Exposure of parental strains to Al on solid defined medium and selection of substrains

Each strain was aseptically transferred from YEM slopes to 10 mL of liquid defined medium (LDM) at pH 6.8 (Wood & Cooper, 1988) and incubated till turbidity. A loopful of each culture was aseptically transferred, streaked on sterile Petri dishes containing 20 mL of solid defined medium (SDM) and incubated at 26°C for colony development. Three single colonies from each strain were selected randomly and grown in LDM to be used as inoculum (Figure 1). Simultaneously, sterile Petri dishes containing SDM at pH 5.5 plus 12 different Al levels (0,

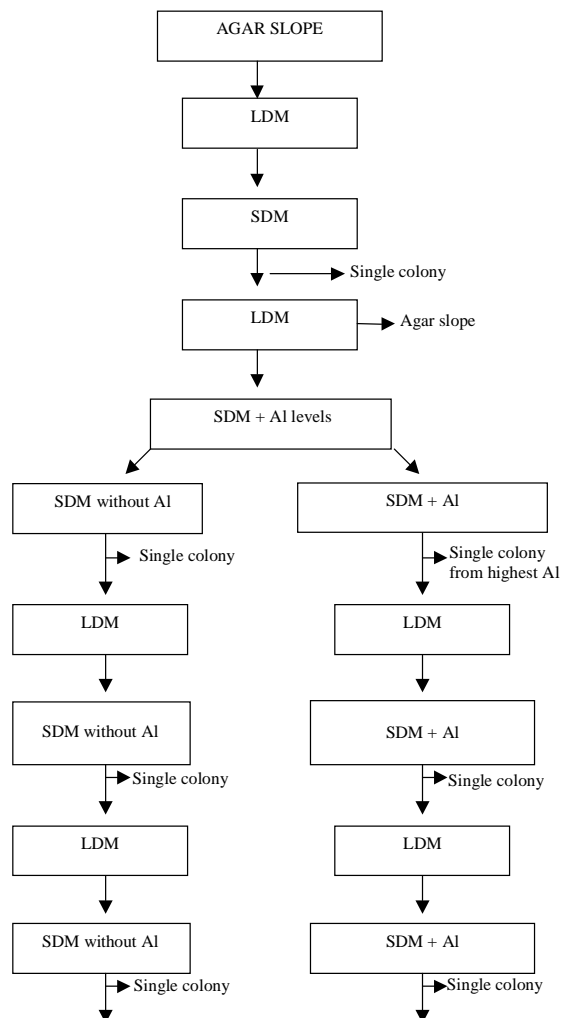


Figure 1. Procedure of exposing strains to Al and selecting substrains.

50, 100, 150, 200, 250, 300, 350, 400, 450, 500 and 550 μM) were prepared and kept dry for two days (Ayanaba et al., 1983). Where required Al was added as a filter-sterilized solution of 50 μM $\text{AlK}(\text{SO}_4)_2 \cdot 12\text{H}_2\text{O}$. Duplicate plates of each Al level were inoculated and incubated for colony development. After 14 days, three single colonies from the SDM agar plates plus 0 μM Al (SDM without Al) and three single colonies from the SDM agar plates plus the highest Al level (SDM + Al) which individual strains could tolerate (Figure 1) were selected and subcultured in LDM. The procedure of exposing these substrains to solid defined media without Al (SDM - Al) or solid defined media with Al (SDM + Al), selecting and subculturing substrains in LDM, was carried out for three more times (Figure 1). At the end of the fourth exposure to Al, each parental strain had at least 90 substrains exposed to SDM without Al and 90 substrains exposed to SDM + Al.

Al tolerance and relative survival on SDM of strains exposed to Al

Loopfuls of culture from: six substrains of each strain exposed four times to SDM + Al, six substrains of each strain exposed four times to SDM without Al, and parental strains, were randomly and aseptically picked up from slopes (as described above), transferred to 10 mL of LDM and incubated at 26°C until turbidity developed. Simultaneously, sterile Petri dishes containing SDM + Al levels, defined previously, were prepared and kept dry for two days. Duplicate plates of each Al level were inoculated with 80 μL of a diluted cell culture (10^3 cfu mL^{-1}) and incubated at 26°C for colony development (Hoben & Somasegaran, 1982). After 10 days, the number of colonies (diameter 0.5 mm) was recorded daily during 25 days. All treatments were done in duplicate. The relative growth of every strain or substrain at each Al level compared to the control (zero Al concentration) was calculated by dividing the number of colonies growing on each SDM + Al level by the number of colonies growing at zero Al concentration. These values were expressed as a percentage.

Antibiotic sensitivity of *Bradyrhizobium* substrains exposed to Al on SDM

Loopfuls of cultures from substrains of the strains USDA 143, SEMIA 5039 and SEMIA 5073, exposed four times to SDM + Al and four times to SDM without Al, were randomly and aseptically picked up from slopes, transferred to 10 mL of LDM and incubated at 26°C until turbidity. Simultaneously, sterile Petri dishes containing YEM plus antibiotic levels were prepared and kept dry for two days. Antibiotics were obtained from Sigma Chemi-

cal Co. Ltd, Poole, Dorset, UK and the stock solutions of rifampicin and kanamycin were prepared in distilled deionized water and dimethyl sulphoxide respectively. The antibiotics rifampicin (0, 25, 50, 100, 150 or 200 $\mu\text{g mL}^{-1}$) and kanamycin (0, 10, 20 and 40 $\mu\text{g mL}^{-1}$) were added to the YEM at 45°C as filter-sterilized solution just before adding the media to the Petri dishes. The Petri dishes were inoculated with 80 μL of a diluted cell culture (10^3 cfu mL^{-1}) and incubated at 26°C for colony development. After eight days, the number of colonies (diameter 0.5 mm) was scored daily during 25 days. For each substrain, the number of colonies growing on YEM + antibiotic level was expressed as a percentage of the number of colonies growing for that particular substrain on YEM without antibiotic. All treatments were done in triplicate.

N₂ fixation effectiveness of substrains after following exposure to Al on SDM

Loopfuls of cultures from parental strains, substrains exposed four times to SDM + Al and substrains exposed four times to SDM without Al were randomly and aseptically picked up from slopes and transferred to 10 mL of LDM and incubated at 26°C until turbidity developed. Simultaneously, soybean seeds (cultivar BR-16) were surface-sterilized in 10% sodium hypochlorite for five minutes and pre-germinated in moist perlite. Similarly, sterile pots (1.2 L plastic containers) containing gravel plus vermiculite were prepared and received 200 mL of N-free culture solution (Broughton & Dilworth, 1970 cited by Somasegaran & Hoben, 1985). One pre-germinated seed with 1.0-1.5 cm root length was then placed in the pot and treated with one milliliter of inoculum (concentration 10^7 to 10^8 cfu mL^{-1}) from the culture above. Additional uninoculated pots, with or without N, were included and received 1 mL of sterile LDM.

Soybean plants were grown in a controlled environment room at 26°C, 16 hours light and 8 hours dark, for three weeks, then transferred to a greenhouse at temperature between 15 and 30°C, using natural day light (minimum 13 hours) for more five weeks. The pots were weighed daily and a N-free solution supplied as required. For the pots supplied with N, 400 mg of N, was supplied weekly by adding 8 mL of a solution of 80 mg N mL^{-1} of NH_4NO_3 .

Shoots were harvested after eight weeks by cutting at the base. They were dried for five days at 65°C, weighed and ground for N analysis. The roots were harvested but due to the excessive nodulation the data was not presented. The N in the shoots was analyzed by double combustion (O_2 combustion at 1,000°C and a chromium trioxide at 1,000°C) followed by a reduction to elemental N with cop-

per at 600°C using a N analyzer (Europe Scientific, Robo Prep). Nitrogen fixation was estimated by subtracting the N in the shoots of uninoculated plants (without inorganic N) from the N in the shoots of inoculated plants.

Six of the strains exposed to Al were tested in two separate experiments: strains USDA 143, SEMIA 587, SEMIA 5073 and strains SEMIA 586, SEMIA 5019, SEMIA 5039. These experiments were conducted at different times. The first one was done during a period of weather more favourable to the development of the plants, and for this reason they produced greater shoot dry weight and N yield than those in the second experiment. Both experiments were arranged as a completely randomized design with three replicates. Significance of treatment effects was assessed by analysis of variance (ANOVA) and significant differences between means were made using a t test at 5% significance level and it was carried out only on the data for N fixed (column N uptake) because it integrated the other data.

Genetic analysis by REP and ERIC primers

The strains SEMIA 587 and SEMIA 5019 and substrains exposed to Al were chosen for genetic characterization because they have been used in commercial inoculants in Brazil. The genetic characterization of these strains was performed with bacterial genomic DNA amplified by the polymerase chain reaction technique (PCR). The primers used on the PCR performance were the repetitive extragenic palindromic (REP) and enterobacterial repetitive intergenic consensus (ERIC) sequences, as described by Bruijn (1992). The PCR patterns were recorded in the binary form, i.e., 1 = presence of a band and 0 = absence of a band to build a matrix. The hierarchical cluster analysis was calculated using UPGMA algorithm (Sarriés et al., 1994).

Results and Discussion

Al tolerance and relative survival on SDM of strains exposed to Al on SDM

Substrains from the strains used were exposed to different concentrations of Al up to 14 days and, the highest Al concentration that each strain could tolerate after one exposure to Al was considered, in this study, as the initial level of tolerance to Al (Table 1).

There was a variation in the initial Al tolerance among the strains (Table 1). Substrains from parental strains SEMIA 587 and SEMIA 5019 tolerated

400 µM Al and substrains from strain USDA 143 tolerated 300 µM Al. These strains appeared to be more tolerant to Al on SDM after 14 days of growth than the substrains from the parental strains SEMIA 586, SEMIA 5039 and SEMIA 5073 that tolerated 200 µM Al. Similar results showing variation in Al tolerance among strains have been reported in data from experiments of attempts to select strains tolerant to Al (Keyser & Munns, 1979a, 1979b; Taylor et al., 1991) and this is a genetic characteristic of strains. Similarly, in this work there was a variation in Al tolerance among strains. This means that the method used to expose strains to Al was efficient to separate Al tolerance. Examples of the efficiency of this methodology can be taken from the study of the tolerance among the five strains brought from Brazil. The strains SEMIA 587 and SEMIA 5019 selected as the most tolerant to Al in this study have been used in the composition of the soybean inoculants in acid soils from Brazil for more than 10 years (Peres & Vidor, 1980).

The next step was to select colonies from these Al concentrations and expose them to the same concen-

Table 1. Aluminium tolerance (µM) and relative growth (%) of six strains of *Bradyrhizobium* (parental strains, strains exposed to SDM without Al and SDM with Al) after being exposed to Al once and four times.

Strains of <i>Bradyrhizobium</i>	First exposure		Fourth exposure	
	Al tolerance	Growth (%) ⁽¹⁾	Al tolerance	Growth (%) ⁽¹⁾
USDA 143	300	107	350	110
SDM without Al	300	101	350	89
SDM + Al	300	102	350	84
SEMIA 586	200	80	350	72
SDM without Al	200	101	350	104
SDM + Al	200	99	350	101
SEMIA 587	400	96	500	92
SDM without Al	400	99	500	96
SDM + Al	400	100	500	97
SEMIA 5019	400	103	500	93
SDM without Al	400	100	500	95
SDM + Al	400	99	500	97
SEMIA 5039	200	87	300	108
SDM without Al	200	102	300	90
SDM + Al	200	107	300	99
SEMIA 5073	200	95	350	102
SDM without Al	200	99	400	97
SDM + Al	200	102	450	98

⁽¹⁾Number of colonies on SDM + Al expressed as a percentage of number of colonies on SDM without aluminium.

tration of Al for more three times (e.g., substrains from strain USDA 143 were picked up from 300 μM Al, subcultured in LDM and again exposed to 300 μM Al). At the beginning, all the substrains exposed to SDM + Al appeared to increase their Al tolerance until the second exposure to aluminium. Subsequently, exposures of substrains to Al showed an inhibitory effect of Al and did not show increases in the Al tolerance.

After the last exposure to Al, the strains exposed to SDM + Al were tested at several concentrations of Al to measure their final tolerance and their relative survival on SDM + Al (Table 1). The Al tolerance of the parental strains and substrains grown on SDM without Al was also evaluated as well as their relative survival on SDM + Al. It seems that all the strains tested became more tolerant to Al, but they did not. It occurred because the first exposure was recorded 14 days after inoculation and the fourth exposure was recorded 25 days after inoculation. The results showed that not only substrains exposed to Al but also parent strains and substrains exposed to SDM without Al presented the same Al tolerance; exception can be seen to the strain SEMIA 5073 that presented an increase in its Al tolerance. The parent strain tolerated 350 μM Al and the substrain exposed on SDM + Al tolerated 450 μM Al.

The relative growth (number of colonies on SDM + Al expressed as a percentage of number of colonies on SDM without Al) of strain USDA 143 showed a reduction when its substrains were exposed to SDM without Al or SDM + Al (300 μM), suggesting that this strain was more affected by SDM composition than the others. In contrast, parental strain SEMIA 586, showed a relative growth on 350 μM Al smaller than the substrains exposed to SDM + Al or SDM without aluminium. Strains SEMIA 587, SEMIA 5019 and SEMIA 5039 did not show any differences in their relative growth and in their tolerance to aluminium. On the other hand, SEMIA 5073 showed different results. Exposure of substrains to SDM without Al and especially substrains exposed to SDM + 200 μM Al showed a slight increase in their Al tolerance; however, it did not show decrease in the relative growth even when substrains were exposed to SDM + Al for four times.

In contrast to these results, data presented by Octive (1990) reported that strain USDA 143 showed

increase in tolerance to Al on SDM from 450 μM Al to 950 μM Al after four exposures to aluminium. The most likely hypothesis to explain the differences between those results and ours is the difference in the final pH of the defined medium. Both studies followed the methods described by Ayanaba et al. (1983). In the present studies, it was found that the addition of Al decreased the pH of the media, similar to the studies of Ayanaba et al. (1983). It was found, for example, that increases of Al from 0 μM Al to 500 μM Al decreased pH from 5.50 to 5.0 ± 0.04 . In the present study, the pH was not adjusted to the initial pH (pH 5.5) as proposed by Ayanaba et al. (1983). In the study by Octive (1990) the pH of the medium was returned to the original pH after addition of the different concentrations of aluminium. So, both studies were done at the same initial pH but at different resultant pH. Differences in pH of solutions alters the presence and concentration of the Al species in the solution by reactions of dissolution and precipitation of solid or liquid phases of Al (Lindsay & Walthall, 1989; Ritchie, 1989, 1994), and could have led to the different results reported.

Antibiotic sensitivity of *Bradyrhizobium* substrains exposed to Al on SDM

The results of the antibiotic sensitivity of substrains exposed or not to Al are presented in Table 2. From the parental strains USDA 143, SEMIA 5039 and SEMIA 5073 two substrains were chosen to measure antibiotic sensitivity: one exposed to SDM without Al and the other one exposed four times to SDM + 300 μM Al (substrain USDA 143) or 200 μM Al (substrains SEMIA 5039 and SEMIA 5073). There was a large difference in the antibiotic resistance among substrains, even when SEMIA 5073 (which showed an increase in Al tolerance) was tested (Table 2). The substrains from strain USDA 143, exposed or not to Al, tolerated a maximum of 25 $\mu\text{g mL}^{-1}$ of rifampicin and 10 $\mu\text{g mL}^{-1}$ of kanamycin. The substrains from strain SEMIA 5039, tolerated 150 $\mu\text{g mL}^{-1}$ of rifampicin and 20 $\mu\text{g mL}^{-1}$ of kanamycin. The substrains from strain SEMIA 5073 tolerated 150 $\mu\text{g mL}^{-1}$ of rifampicin and 10 $\mu\text{g mL}^{-1}$ of kanamycin. There were no differences between substrains exposed to SDM + Al or SDM without Al in their sensitivity to rifampicin and

kanamycin. These results suggest that the levels of Al applied did not affect the sensitivity to antibiotics of three substrains evaluated. These data are in agreement with Ayanaba & Wong (1982) who also observed that the resistance to antibiotics did not necessarily entail tolerance to Al although in their study strains from acid soils tend to be more resistant to antibiotics. They concluded that there was no evidence of cross-resistance to Al and antibiotics in *Bradyrhizobium*.

N₂ fixation effectiveness of substrains exposed to SDM + Al

Table 3 presents data for soybean, cv. BR-16, inoculated with one parental strain of strains USDA 143, SEMIA 587 and SEMIA 5073; one substrain from each strain exposed four times to SDM without Al; and two substrains from each strain exposed four times to SDM + Al (USDA 143, 300 µM Al; SEMIA 587, 400 µM Al and SEMIA 5073, 200 µM Al). N yield mean of parental SEMIA 587 and its substrain exposed to SDM without Al was higher than N yield mean of both substrains of SEMIA 587 exposed to 400 µM Al. This indicates that prior exposure of this strain to Al affected the N₂ fixation effectiveness of this strain. Nodules of this substrain were collected, the substrains isolated and used in a further study to in-

vestigate their nodulation ability, N₂ fixation effectiveness and also to determine if after one passage through the plant this effect would disappear. Table 4 presents data for shoot dry weight, N in the plant, N yield, nodule number and nodule dry weight between the two substrains. There were no differences between parental strain and an isolate taken from a nodule formed by a substrain that received four single exposures to SDM + 400 µM Al. This result indicated that, if Al really gave any residual effect on strain SEMIA 587, one passage through the plant eliminated that possible initial toxic effect of aluminium. It seems that the initial effect caused by Al was a temporary one and not an effect on the *nif* genes as suggested by Octive (1990) and Octive et al. (1994). Other strains tested at the same time (USDA 143 and SEMIA 5073) in this experiment did not show any lasting effect of exposure to aluminium.

Table 5 presents data for soybean plants inoculated with one parental strains of strains SEMIA 586, SEMIA 5019 and SEMIA 5039; one substrain from each parental strain exposed four times to SDM without Al; and two substrains from each parental strain exposed four times to SDM + Al (SEMIA 586, 200 µM Al; SEMIA 5019, 400 µM Al, and SEMIA 5039, 200 µM Al). Strains SEMIA 586, SEMIA 5019 and SEMIA 5039 did not show any lasting effects of exposure to Al because substrains

Table 2. Relative growth (number of colonies on YEMA + antibiotic expressed as a percentage of number of colonies on YEM + 0 µg mL⁻¹ antibiotic) of *Bradyrhizobium japonicum* substrains on YEMA + antibiotic, after being exposed four times to SDM without Al and four times to SDM + Al (strain USDA 143 on 300 µM Al and strains SEMIA 5039 and SEMIA 5073 on 200 µM Al). Three replicates per average.

Antibiotic concentration (µg mL ⁻¹)	USDA 143		SEMIA 5039		SEMIA 5073	
	0 µM	300 µM	0 µM	200 µM	0 µM	200 µM
	Rifampicin					
0	100.0	100.0	100.0	100.0	100.0	100.0
25	8.7	7.8	N ⁽¹⁾	N	N	N
50	0.5	0.4	46.6	49.2	46.1	40.0
100	0.0	0.0	19.8	24.9	8.7	5.7
150	0.0	0.0	6.1	8.2	3.6	2.1
	Kanamycin					
0	100.0	100.0	100.0	100.0	100.0	100.0
10	90.3	78.7	60.3	83.4	1.2	4.8
20	0.0	0.0	30.3	33.0	0.0	0.0
40	0.0	0.0	0.0	0.0	0.0	0.0

⁽¹⁾Not inoculated.

exposed to SDM + Al or to SDM without Al showed similar results.

Data showing the direct toxic effect of Al on the symbiotic process of N₂ fixation in soybean are frequently reported (Flis et al., 1993). Reports of re-

sidual or lasting effects of Al on the bacteria causing alterations in N₂ fixation of *Bradyrhizobium* are rare. Oclave et al. (1994) reported that single exposures of parental strain USDA 148 to 450 µM Al reduced nodulation and N₂ fixation of most of the substrains. The data presented in this study are from 12 substrains of six parental strains of *Bradyrhizobium* and did not show any residual effects following four single exposures to aluminium.

Table 3. Soybean shoot dry weight, N in the shoots and N yield of *Bradyrhizobium japonicum* parental strains (USDA 143, SEMIA 587 and SEMIA 5073), substrains B exposed to SDM without Al and substrains C and D exposed to SDM + Al. Three replicates per average.

Substrains	Al concentration (µM)	Shoot dry weight (g)	N shoots (%)	N yield (mg) ⁽¹⁾
USDA 143 (A)	-	43.5	2.56	1,113.3a
USDA 143 (B)	0	43.3	2.71	1,172.2a
USDA 143 (C)	300	46.0	2.50	1,151.3a
USDA 143 (D)	300	44.3	2.49	1,102.6a
Mean (A + B) ⁽²⁾	-	43.4	2.64	1,142.8
Mean (C + D) ⁽³⁾	-	45.2	2.50	1,127.0
LSD				130.6
SEMIA 587 (A)	-	44.8	2.48	1,109.7a
SEMIA 587 (B)	0	45.2	2.22	1,003.9b
SEMIA 587 (C)	400	39.7	2.30	913.6b
SEMIA 587 (D)	400	43.9	2.24	983.3b
Mean (A + B) ⁽²⁾	-	45.0	2.35	1,056.8A
Mean (C + D) ⁽³⁾	-	41.8	2.27	948.5B
LSD				101.7
SEMIA 5073 (A)	-	43.2	2.73	1,181.0a
SEMIA 5073 (B)	0	44.6	2.80	1,250.4a
SEMIA 5073 (C)	200	42.8	2.78	1,188.6a
SEMIA 5073 (D)	200	42.7	2.77	1,181.7a
Mean (A + B) ⁽²⁾	-	43.9	2.77	1,215.7
Mean (C + D) ⁽³⁾	-	42.8	2.78	1,185.2
LSD				116.9
Not inoculated	-	0.34	0.59	2.0
Nitrogen	-	23.8	1.59	378.4

⁽¹⁾Values followed by the same letter in the same column, from each strain, do not differ among themselves (t test, p≤0.05). ⁽²⁾Mean between the strain and substrain not exposed to aluminium. ⁽³⁾Mean between the two substrains exposed to aluminium.

Table 4. Soybean data of dry shoot, N in the shoots, N yield, number and weight of nodules from one parental strain SEMIA 587 and one isolate substrain from strain SEMIA 587 isolated from a nodule of a plant inoculated with a substrain exposed four times to SDM + 400 µM Al. Four replicates per average.

Parameter	Parental strain SEMIA 587	Isolate substrain SEMIA 587
Dry shoot (g)	20.8	20.2
N shoots (%)	2.3	2.4
N yield (mg)	479.5	474.9
Nodule number	376.3	374.5
Nodule weight (g)	1.8	2.0

Genetic characteristics of strains SEMIA 587 and SEMIA 5019 and their substrains exposed to Al on SDM

The genomic DNA of two parental strains of *Bradyrhizobium* as well as three substrains of each parental strain exposed to Al in SDM were used as templates for REP and ERIC PCR patterns. As can be seen in Figure 2, using REP and ERIC primers

Table 5. Soybean shoot dry weight, N in the shoots and N yield of *Bradyrhizobium japonicum* parental strains (SEMIA 586, SEMIA 5019 and SEMIA 5039), substrains B exposed to SDM without Al and substrains C and D exposed to SDM + Al. Three replicates per average.

Substrains	Al concentration (µM)	Shoot dry weight (g)	N shoots (%)	N yield (mg) ⁽¹⁾
USDA 143 (A)	-	29.8	2.06	614.2a
USDA 143 (B)	0	30.1	1.99	597.7a
USDA 143 (C)	300	30.5	1.87	571.4a
USDA 143 (D)	300	29.8	2.00	597.7a
Mean (A + B) ⁽²⁾	-	30.0	2.03	606.0
Mean (C + D) ⁽³⁾	-	30.2	1.94	584.6
LSD				66.4
SEMIA 587 (A)	-	23.9	1.44	344.2a
SEMIA 587 (B)	0	24.2	1.59	384.3a
SEMIA 587 (C)	400	22.2	1.74	385.1a
SEMIA 587 (D)	400	24.4	1.44	350.7a
Mean (A + B) ⁽²⁾	-	24.1	1.52	364.3
Mean (C + D) ⁽³⁾	-	23.3	1.59	367.9
LSD				46.4
SEMIA 5073 (A)	-	27.9	1.98	551.7a
SEMIA 5073 (B)	0	29.1	1.96	570.6a
SEMIA 5073 (C)	200	26.6	1.96	520.5a
SEMIA 5073 (D)	200	27.5	2.01	551.0a
Mean (A + B) ⁽²⁾	-	28.5	1.97	561.2
Mean (C + D) ⁽³⁾	-	27.1	1.98	535.8
LSD				57.9
Not inoculated	-	0.33	0.70	2.3
Nitrogen	-	33.1	1.77	583.6

⁽¹⁾Values followed by the same letter in the same column, from each strain, do not differ among themselves (t test, p≤0.05). ⁽²⁾Mean between the strain and substrain not exposed to aluminium. ⁽³⁾Mean between the two substrains exposed to aluminium.

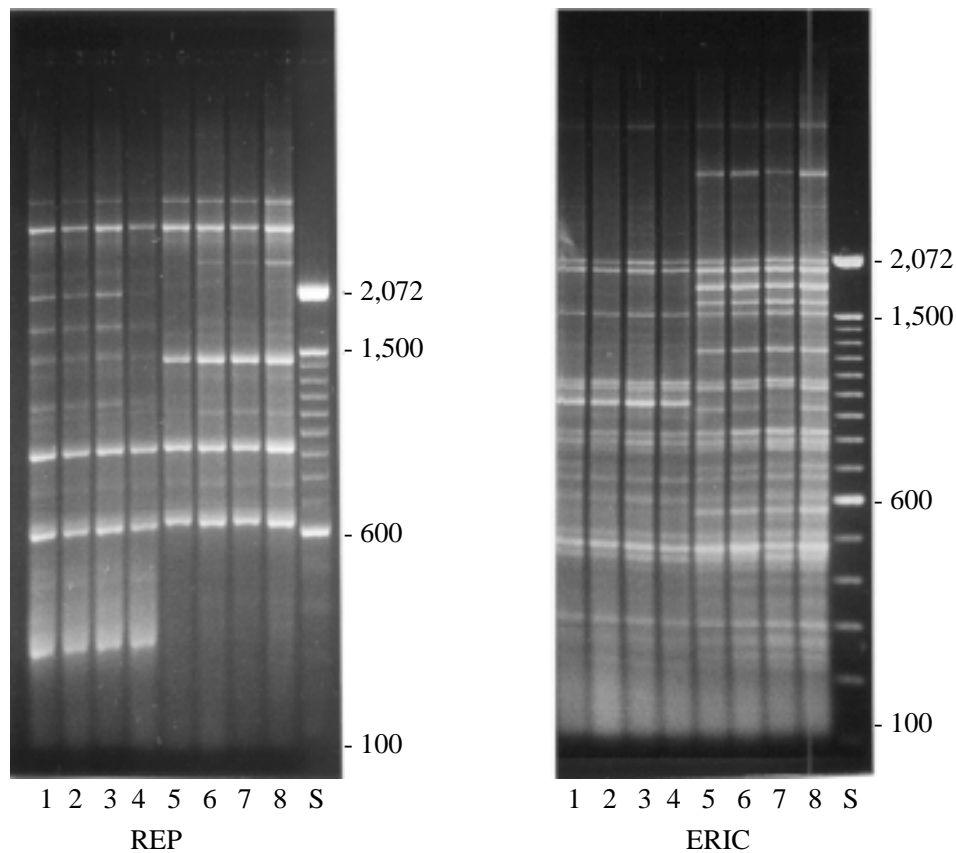


Figure 2. REP and ERIC PCR fingerprint patterns showing the comparison of genomic DNA of parental strains SEMIA 587 (lane 1) and SEMIA 5019 (lane 5). Lanes 2, 3 and 4 are SEMIA 587 isolates exposed to Al and lanes 6, 7 and 8 are SEMIA 5019 isolates exposed to Al. Lanes S show the molecular weight markers.

and REP technique, it was possible to distinguish the differences between the parental strains SEMIA 587 and SEMIA 5019 and their substrains exposed to Al on SDM. Separate cluster analyses with each set of data are shown for each strain by REP and ERIC primers (Figure 2). The genetic similarity coefficient derived from PCR fingerprints generated by both primers of both strains and substrains were tested but not included because genetic differences between each strain and their substrain exposed to Al were not detected by PCR technique performed with the primers REP and ERIC.

The results of this study indicate that REP and ERIC PCR patterns provide a high degree of discrimination between strains SEMIA 587 and

SEMIA 5019, and that the exposure to Al did not affect the PCR patterns evaluated by REP and ERIC PCR techniques. Previous work of Nishi et al. (1996), using the same technique, demonstrated genetic differences between parental strains and variant strains of *Bradyrhizobium*.

Conclusions

1. Exposure of *Bradyrhizobium* strains USDA 143, SEMIA 586, SEMIA 587, SEMIA 5019, SEMIA 5039 and SEMIA 5073 to SDM plus Al do not cause change on their Al tolerance, survival, resistance to antibiotics and N₂ fixation effectiveness.

2. The genetic characteristics of strains SEMIA 587 and SEMIA 5019 determined by REP and ERIC PCR do not change as a function of Al exposure.

References

- ALVA, A. K.; EDWARDS, D. G.; ASHER, C. J.; SUTHIPRADIT, S. Effects of acid soil infertility factors on growth and nodulation of soybean. **Agronomy Journal**, Madison, v. 79, p. 302-306, 1987.
- ALVA, A. K.; EDWARDS, D. G.; CARROL, B. J.; ASHER, C. J.; GRESSHOFF, S. Nodulation and early growth of soybean mutants with increased nodulation capacity under acid soil infertility factors. **Agronomy Journal**, Madison, v. 80, p. 836-841, 1988.
- AYANABA, A.; ASANUMA, S.; MUNNS, D. N. An agar plate method for rapid screening of *Rhizobium* for tolerance to acid-aluminium stress. **Soil Science Society of America Journal**, Madison, v. 47, p. 256-258, 1983.
- AYANABA, A.; WONG, A. L. Antibiotic-resistant mutants identified from nodules of uninoculated soybean grown in a strongly acid soil. **Soil Biology and Biochemistry**, Oxford, v. 14, p. 139-143, 1982.
- BRUIJN, F. J. de. Use of repetitive (repetitive extragenic palindromic and enterobacterial repetitive intergenic consensus) sequences and polymerase chain reaction to fingerprint the genomes of *Rhizobium meliloti* isolates and other soil bacteria. **Applied and Environmental Microbiology**, Washington, v. 58, p. 2180-2187, 1992.
- FLIS, S. E.; GLENN, A. R.; DILWORTH, J. The interaction between aluminium and root nodule bacteria. **Soil Biology and Biochemistry**, Oxford, v. 25, p. 403-417, 1993.
- HOBEN, H. J.; SOMASEGARAN, P. Comparison of the pour, spread and drop plate methods for enumeration of *Rhizobium* spp. in inoculants made from presterilized peat. **Applied and Environmental Microbiology**, Washington, v. 44, p. 1246-1247, 1982.
- JOHNSON, A. C.; WOOD, M. DNA: a possible site of action of aluminium in *Rhizobium* spp. **Applied and Environmental Microbiology**, Washington, v. 26, p. 3629-3633, 1990.
- KEYSER, H. H.; MUNNS, D. N. Effects of calcium, manganese, and aluminium on growth of rhizobia in acid media. **Soil Science Society of America Journal**, Madison, v. 43, p. 500-503, 1979a.
- KEYSER, H. H.; MUNNS, D. N. Tolerance of rhizobia to acidity, aluminium and phosphate. **Soil Science Society of America Journal**, Madison, v. 43, p. 519-523, 1979b.
- LINDSAY, W. L.; WALTHALL, P. M. The solubility aluminium in soils. In: SPOSITO, G. (Ed.). **The environmental chemistry of aluminum**. Boca Raton: CRC, 1989. p. 221-239.
- NISHI, C. Y. M.; BODDEY, L. H.; VARGAS, M. A. T.; HUNGRIA, M. Morphological, physiological and genetic characterization of two new *Bradyrhizobium* strains recently recommended as Brazilian commercial inoculants for soybean. **Symbiosis**, Rehovot, v. 20, p. 147-162, 1996.
- OCTIVE, J. C. **Mutagenic effects of aluminium on rhizobia and bradyrhizobia**. Reading: The University of Reading, 1990. 207 p. Ph.D. Thesis.
- OCTIVE, J. C.; JOHNSON, A.; WOOD, M. Effects of previous aluminium exposure on motility and nodulation by *Rhizobium* and *Bradyrhizobium*. **Soil Biology and Biochemistry**, Oxford, v. 26, p. 1477-1482, 1994.
- OCTIVE, J. C.; WOOD, M.; JOHNSON, A. C. Mutagenic effects of aluminium. **Mutation Research**, Amsterdam, v. 264, p. 135-137, 1991.
- PERES, J. R. R.; VIDOR, C. Seleção de estirpes de *Rhizobium japonicum* e competitividade por sítios de infecção nodular em cultivares de soja. **Agronomia Sulrio-grandense**, Santa Maria, v. 16, n. 2, p. 205-219, 1980.
- RITCHIE, G. S. P. Role of dissolution and precipitation of minerals in controlling soluble aluminium in acid soils. **Advances in Agronomy**, New York, v. 53, p. 47-83, 1994.
- RITCHIE, G. S. P. The chemical behaviour of aluminium, hydrogen and manganese in acid soils. In: ROBSON, A. D. (Ed.). **Soil acidity and plant growth**. Sydney: Academic, 1989. p. 1-60.
- SARRIÉS, G. A.; WALTER, M.; REYS, A. E. L.; MOON, D. **Numerical taxonomy and multivariate analysis system**. Piracicaba: USP, 1994. 7 p.
- SOMASEGARAN, P.; HOBEN, H. J. **Methods in legume-rhizobium technology**. Maui: University of Hawaii/ NifTAL Project and MIRCEN, 1985. 367 p.
- TAYLOR, R. W.; WILLIAMS, M. L.; SISTANI, K. R. N₂ fixation by soybean-*Bradyrhizobium* combinations under acidity, low P and high Al stresses. In: WRIGHT, R. J.; BALIGAR, V. C.; MURRMANN, R. P. (Ed.). **Plant-soil interactions at low pH**. Dordrecht: Kluwer, 1991. p. 293-300.
- VINCENT, J. M. **A manual for the practical study of root-nodule bacteria**. Oxford: Blackwell Scientific, 1970. 164 p.
- WOOD, M.; COOPER, J. E. Acidity, aluminium and multiplication of *Rhizobium trifolii*: effects of initial inoculum density and growth phase. **Soil Biology and Biochemistry**, Oxford, v. 20, p. 83-87, 1988.