

CT evaluation is fundamental to the characterization of the affected organs^(6,7).

Currently, Brazil is the second largest consumer of cocaine and its derivatives, the leader being the United States⁽⁸⁾. The mechanism thought to trigger bleeding during or after cocaine use is stimulation of alpha-adrenergic receptors, which produce vasoconstriction with a consequent increase in abdominal blood pressure and a reduction of up to 20% of the splenic volume, promoting high-pressure blood flow in a retracted parenchyma and with a low concentration of connective tissue, making the spleen more prone to bleeding, which can be triggered even by coughing^(6,9).

In nontraumatic splenic hemorrhage, the differential diagnoses include dengue, infectious mononucleosis, polyarteritis nodosa, segmental arterial mediolysis, neoplasms, coagulopathy, and hemoglobinopathy^(6,7,9-11).

In conclusion, although nontraumatic splenic hemorrhage is uncommon, the possibility of cocaine use as a triggering event should be considered, especially in young, previously healthy patients with no comorbidities to explain such an event.

REFERENCES

1. Rocha EL, Pedrassa BC, Bormann RL, et al. Abdominal tuberculosis: a radiological review with emphasis on computed tomography and magnetic resonance imaging findings. *Radiol Bras.* 2015;48:181-91.
2. Barros RHO, Penachim TJ, Martins DL, et al. Multidetector computed tomography in the preoperative staging of gastric adenocarcinoma. *Radiol Bras.* 2015;48:74-80.
3. Bormann RL, Rocha EL, Kierzenbaum ML, et al. The role of gadoteric acid as a paramagnetic contrast medium in the characterization and detection of focal liver lesions: a review. *Radiol Bras.* 2015;48:43-51.
4. Fernandes DA, Kido RYZ, Barros RHO, et al. Immunoglobulin G4-related disease: autoimmune pancreatitis and extrapancreatic manifestations. *Radiol Bras.* 2016;49:122-5.

5. Fajardo L, Ramin GA, Penachim TJ, et al. Abdominal manifestations of extranodal lymphoma: pictorial essay. *Radiol Bras.* 2016;49:397-402.
6. Azar F, Brownson E, Dechert T. Cocaine-associated hemoperitoneum following atraumatic splenic rupture: a case report and literature review. *World J Emerg Surg.* 2013;8:33.
7. Lin WY, Lin GM, Chang FY. An unusual presentation of scrub typhus with atraumatic hemoperitoneum. *Am J Gastroenterol.* 2009;104:1067.
8. Laranjeira R, Madruga CS, Pinsky I, et al. II Levantamento Nacional de Álcool e Drogas (LENAD) – 2012. São Paulo: Instituto Nacional de Ciência e Tecnologia para Políticas Públicas de Álcool e Outras Drogas (INPAD), Unifesp; 2014.
9. Carlin F, Walker AB, Pappachan JM. Spontaneous splenic rupture in an intravenous drug abuser. *Am J Med.* 2014;127:e7-8.
10. Mukhopadhyay M, Chatterjee N, Maity P, et al. Spontaneous splenic rupture: a rare presentation of dengue fever. *Indian J Crit Care Med.* 2014;18:110-2.
11. Michael M, Widmer U, Wildermuth S, et al. Segmental arterial mediolysis: CTA findings at presentation and follow-up. *AJR Am J Roentgenol.* 2006;187:1463-9.
12. Redondo MC, Ríos A, Cohen R, et al. Hemorrhagic dengue with spontaneous splenic rupture: case report and review. *Clin Infect Dis.* 1997; 25:1262-3.

Bruno Niemeyer de Freitas Ribeiro¹, Rafael Santos Correia¹, Tiago Medina Salata², Fernanda Salata Antunes², Edson Marchiori³

1. Instituto Estadual do Cérebro Paulo Niemeyer, Rio de Janeiro, RJ, Brazil. 2. Hospital Casa de Portugal / Clínica 3D Diagnóstico por Imagem, Rio de Janeiro, RJ, Brazil. 3. Universidade Federal do Rio de Janeiro (UFRJ), Rio de Janeiro, RJ, Brazil. Mailing address: Instituto Estadual do Cérebro Paulo Niemeyer – Departamento de Radiologia. Rua do Rezende, 156, Centro. Rio de Janeiro, RJ, Brazil, 20231-092. E-mail: bruno.niemeyer@hotmail.com.

<http://dx.doi.org/10.1590/0100-3984.2015.0203>

Intestinal strongyloidiasis: radiological findings that support the diagnosis

Dear Editor,

Two male patients, 38 and 32 years of age (patients 1 and 2, respectively), sought treatment with complaints and the clinical/biochemical profile described below. *Patient 1* – This patient complained of nausea and intermittent postprandial vomiting, for approximately two months, accompanied by mild abdominal pain, diarrhea, and weight loss. Physical examination revealed emaciation, with discrete edema of the lower limbs. Laboratory tests showed a low albumin level (0.9 g/dL) and an elevated level of C-reactive protein (31.4 mg/L). A computed tomography (CT) scan of the abdomen showed diffuse thickening of the intestinal wall

in segments of the small intestine, more accentuated in the region of the jejunum and the second portion of the duodenum, together with gastric distension, thickening (with enhancement) of the mucous membrane, dilation of the bile duct (Figure 1), and free fluid in the peritoneal cavity. *Patient 2* – This patient also complained of nausea and postprandial vomiting, accompanied by mild abdominal pain, for one month, exacerbated for one day. Physical examination revealed emaciation, with dull pain on abdominal palpation. Laboratory tests showed discrete leukocytosis without deviation, a low albumin level (2.2 g/dL), and an elevated level of C-reactive protein (65.1 mg/L). A CT scan showed accentuated thickening of the intestinal wall in segments of the jejunum, together with upstream gastric and duodenal dilation, discrete dilation of the bile duct, pneumobilia, and gaseous foci in

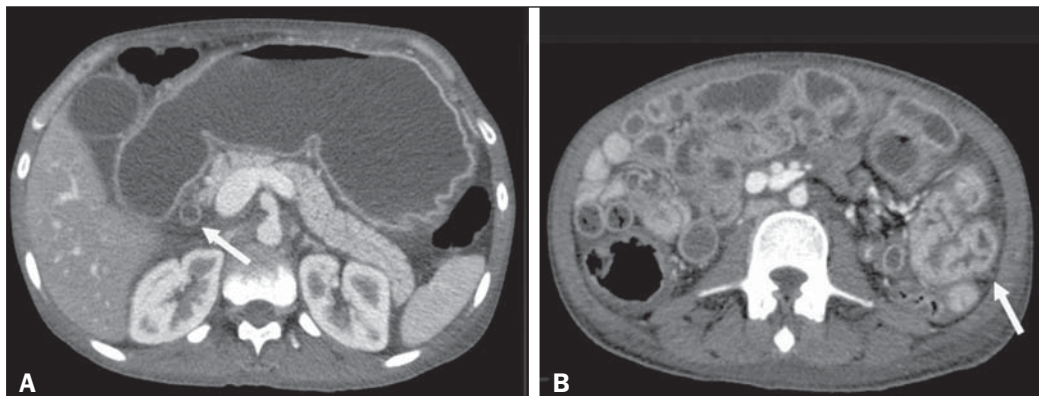


Figure 1. Intravenous contrast-enhanced CT scan showing accentuated gastric distension with mucous enhancement, dilation of the bile duct (arrow in **A**) and thickening of the intestinal wall in segments of the small intestine (arrow in **B**), with fluid distension of the intestinal loops.

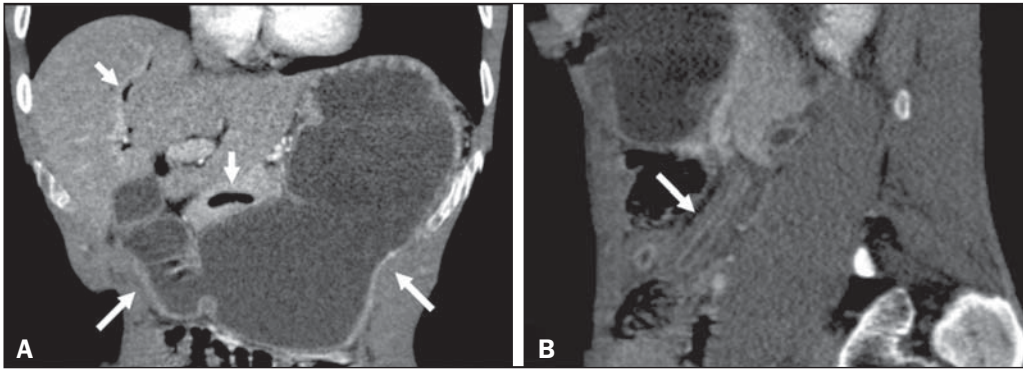


Figure 2. Intravenous contrast-enhanced CT scan, in the coronal and sagittal planes (**A** and **B**, respectively), showing accentuated gastric and duodenal distension (long arrows in **A**), accompanied by gas in the biliary tract and pancreas (short arrows in **A**), together with the “lead pipe” sign, characterized by thickening of the walls, rigidity, and luminal narrowing of the small intestine (arrow in **B**).

the main pancreatic duct (Figure 2). In both of the cases presented here, the diagnosis of strongyloidiasis was confirmed by gastroduodenal biopsy and by parasitological examination of the feces. Both patients were treated with support measures and ivermectin, which resulted in significant improvement of their symptoms.

Strongyloides stercoralis is an intestinal helminth endemic to many regions with tropical or subtropical climates, as well as some temperate regions^(1–3). Infection with *S. stercoralis* (strongyloidiasis) can manifest as a clinical syndrome involving the skin, lungs, or gastrointestinal tract⁽³⁾. Approximately half of all cases of *S. stercoralis* infection are asymptomatic^(4,5). When present, the symptoms of strongyloidiasis are vague and can include abdominal pain, diarrhea, nausea, and vomiting⁽¹⁾. Less frequently, the disease can manifest as malabsorption syndromes, paralytic ileus, intestinal obstruction (possibly related to pneumobilia), or gastrointestinal bleeding^(4–6).

In *S. stercoralis* infection, the imaging findings of the alterations to the large intestine are nonspecific and similar to those seen in inflammatory/infectious intestinal diseases of other causes, especially the edema of the duodenal wall and of the proximal small intestine, as well as mucous congestion, coarse folds, and dilation of the bowel loops^(7–9). At that stage, the radiological images are similar to those seen in hypoalbuminemia, ascites and peritonitis. The combination of dilation of the stomach and thickening of the gastric mucous membrane is less common in inflammatory processes of other causes and, in strongyloidiasis, results in luminal narrowing and thickening of the duodenal folds, producing a “lead pipe” sign (Figure 2B), and upstream distension, as seen in the cases presented here⁽⁹⁾. In some cases, there can be reflux of oral contrast into the biliary tree or pneumobilia, due to sphincter of Oddi dysfunction, caused by severe inflammation of the duodenal wall, as was observed in our patient 2⁽¹⁰⁾. To our knowledge, there have been no reported cases of gas in the main pancreatic duct, although the cause should be the same as that of pneumobilia.

When there are intestinal manifestations, the main differential diagnoses of strongyloidiasis include Crohn’s disease, lymphoma, tuberculosis, and other causes of enterocolitis. Laboratory tests and some tomographic images, as well as the extensive lymphadenopathy seen in lymphoma and the necrotic lymph nodes seen in tuberculosis, can facilitate the distinction among the diseases⁽¹¹⁾. Because strongyloidiasis presents a nonspecific clinical profile, it can evolve to a disseminated form, with sepsis and shock, especially in immunosuppressed patients⁽¹²⁾. The diagnosis of strongyloidiasis should be suspected and confirmed early on, through the analysis of some of the radiological signs described

here. The definitive diagnosis is based on a finding of larvae in the feces, tracheal sections, bronchial lavage fluid, gastric aspirate, or biopsy samples—from the stomach, jejunum, skin, or lung⁽¹²⁾. Intestinal strongyloidiasis is an important differential diagnosis of inflammatory diseases of the small intestine and should be considered in the presence of certain clinical aspects and a combination of imaging findings, including thickening/enhancement of the mucous membrane in the small intestine, gastric distension, and biliopancreatic changes such as dilation and gas within the biliary tract and pancreas.

REFERENCES

- Schär F, Trostorf U, Giardina F, et al. Strongyloides stercoralis: global distribution and risk factors. *PLoS Negl Trop Dis*. 2013;7:e2288.
- Greiner K, Bettencourt J, Semolic C. Strongyloidiasis: a review and update by case example. *Clin Lab Sci*. 2008;21:82–8.
- Marcos LA, Terashima A, Dupont HL, et al. Strongyloides hyperinfection syndrome: an emerging global infectious disease. *Trans R Soc Trop Med Hyg*. 2008;102:314–8.
- Concha R, Harrington W Jr, Rogers AI. Intestinal strongyloidiasis: recognition, management, and determinants of outcome. *J Clin Gastroenterol*. 2005;39:203–11.
- Segarra-Newnham M. Manifestations, diagnosis, and treatment of Strongyloides stercoralis infection. *Ann Pharmacother*. 2007;41:1992–2001.
- Parmar R, Bontemps E, Mendis R, et al. Intestinal strongyloidiasis presenting with pneumobilia and partial duodenal obstruction. *Am J Gastroenterol*. 2002;97(9 Suppl):S211–2.
- Parashari UC, Khanduri S, Kumar D. Radiological appearance of small bowel in severe strongyloidiasis. *Rev Soc Bras Med Trop*. 2012;45:141.
- Medina LS, Heiken JP, Gold RP. Pipestem appearance of small bowel in strongyloidiasis is not pathognomonic of fibrosis and irreversibility. *AJR Am J Roentgenol*. 1992;159:543–4.
- Dallemand S, Waxman M, Farman J. Radiological manifestations of Strongyloides stercoralis. *Gastrointest Radiol*. 1983;8:45–51.
- Louisy CL, Barton CJ. The radiological diagnosis of Strongyloides stercoralis enteritis. *Radiology*. 1971;98:535–41.
- Ortega CD, Ogawa NY, Rocha MS, et al. Helminthic diseases in the abdomen: an epidemiologic and radiologic overview. *Radiographics*. 2010;30:253–67.
- Luna OB, Grasselli R, Ananias M, et al. Estrongiloidíase disseminada: diagnóstico e tratamento. *Rev Bras Ter Intensiva*. 2007;19:463–8.

José Henrique Frota Júnior¹, Marcos Antônio Haddad Pereira¹, Paulo Gustavo Maciel Lopes¹, Leandro Accardo Matos¹, Giuseppe D’Ippolito¹

1. Escola Paulista de Medicina da Universidade Federal de São Paulo (EPM-Unifesp), São Paulo, SP, Brazil. Mailing address: Dr. José Henrique Frota Júnior. Departamento de Diagnóstico por Imagem – EPM-Unifesp. Rua Napoleão de Barros, 800, Vila Clementino. São Paulo, SP, Brazil, 04024-012. E-mail: jhenriquefrota@hotm.com.

<http://dx.doi.org/10.1590/0100-3984.2015.0175>