

Adherence to and invasion of HeLa cells by *Campylobacter* spp. strains isolated from animals¹

Paula Alexandra G. Morais-Rios², Telma M. Alves², Elaine M.S. Dorneles³,
Ana Paula R. Stynen², Ana Cláudia P. Cottorello^{2,4}, Ana Luzia Lauria-Filgueiras⁵
and Andrey P. Lage^{2*}

ABSTRACT.- Morais-Rios P.A.G., Alves T.M., Dorneles E.M.S., Stynen A.P.R., Cottorello A.C.P., Lauria-Filgueiras A.L. & Lage A.P. 2018. **Adherence to and invasion of HeLa cells by *Campylobacter* spp. strains isolated from animals.** *Pesquisa Veterinária Brasileira* 38(7):1293-1299. Laboratório de Bacteriologia Aplicada, Departamento de Medicina Veterinária Preventiva, Escola de Veterinária, Universidade Federal de Minas Gerais, Av. Antônio Carlos 6627, Cx. Postal 567, Belo Horizonte, MG 31270-901, Brazil. E-mail: alage@vet.ufmg.br

The objective of this study was to evaluate the adherence to and invasion of HeLa cells by *Campylobacter* spp. strains (total n=63) isolated from chickens (n=4), dogs (n=4), non-human primates (n=16), pigs (n=9), calf feces (n=18), and bovine genital tracts (n=12). Thirty-two strains adhered to and 13 invaded HeLa cells. Invasive strains included 1 of 4 dog isolates, 4 of 16 non-human primate isolates (2 *C. jejuni* and 2 *C. coli*), 1 of 9 *C. coli* strains isolated from pigs, and 7 of 18 *C. fetus* subsp. *fetus* isolated from calf feces. Only 25% of chicken and dog isolates and 23% of pig isolates were able to adhere to HeLa cells, a property of 65% of strains obtained from calf feces and 83% of bovine genital tract-isolated strains. The adherent phenotype was observed in 5 of 19, 6 of 15, and 21 of 29 strains of *C. jejuni*, *C. coli*, and *C. fetus* subsp. *fetus*, respectively, whereas 3 of 19, 3 of 15, and 7 of 29 strains were additionally able to invade HeLa cells, respectively. *C. jejuni*, *C. coli*, and *C. fetus* subsp. *fetus* strains isolated from animal feces are able to adhere and invade HeLa cells, whereas *C. fetus* subsp. *fetus* strains isolated from the bovine genital tract were not invasive in HeLa cells. The present study showed that *C. jejuni* isolated from primates and dogs, *C. coli* isolated from non-human primates and pigs, and *C. fetus* subsp. *fetus* isolated from calf feces have the ability to adhere to and to invade HeLa cells. Moreover, the lack of invasive ability by *C. fetus* subsp. *fetus* strains isolated from the bovine genital tract could be important in the pathogenesis of the genital tract diseases caused by this bacterium.

INDEX TERMS: Adherence, invasion, HeLa cells, *Campylobacter* spp., chicken, dogs, swine, cattle, domestic animals, non-human primates.

RESUMO.- [Adesão e invasão de células HeLa por amostras de *Campylobacter* spp. isoladas de animais.] O objetivo deste estudo foi avaliar a adesão e invasão de células HeLa

por amostras de *Campylobacter* spp. (total n=63) isoladas de frangos (n=4), cães (n=4), primatas não-humanos (n=16), porcos (n=9), fezes de bezerros (n=18), e trato genital de bovinos (n=12). Trinta e duas amostras foram capazes de aderir e 13 invadiram células HeLa. As amostras invasivas incluíram 1 de 4 isolados de cão, 4 de 16 isolados de primatas não-humano (2 *C. jejuni* e 2 *C. coli*), 1 de 9 *C. coli* isoladas de porcos e 7 de 18 *C. fetus* subsp. *fetus* isoladas de fezes de bezerros. Apenas 25% dos isolados de frango e de cão e 23% dos isolados de suínos foram capazes de aderir a células HeLa, propriedade exibida por 65% das cepas obtidas a partir de fezes de bezerros e por 83% das amostras isoladas de trato genital bovino. O fenótipo aderente foi observado em 5 de 19, 6 de 15 e 21 de 29 amostras de *C. jejuni*, *C. coli* e *C. fetus* subsp. *fetus*, respectivamente, enquanto que 3 de 19, 3 de 15 e 7 de 29 amostras foram adicionalmente capazes de invadir células HeLa, respectivamente. *C. jejuni*, *C. coli*, e *C. fetus* subsp. *fetus* isoladas de fezes de animais são capazes de aderir e invadir células HeLa, enquanto *C. fetus* subsp. *fetus* isoladas do trato genital bovino não foram invasivas em células HeLa. O presente estudo mostrou que *C. jejuni* isoladas de primatas e cães, *C. coli* isoladas de primatas não-humanos e porcos, e *C. fetus* subsp. *fetus* isoladas de fezes de bezerros têm a capacidade de aderir e invadir células HeLa. Além disso, a falta de capacidade invasiva por *C. fetus* subsp. *fetus* isoladas do trato genital bovino pode ser importante na patogênese das doenças do trato genital causadas por este bacterium.

¹ Received on January 13, 2017.

Accepted for publication on June 21, 2017.

² Departamento de Medicina Veterinária Preventiva, Escola de Veterinária, Universidade Federal de Minas Gerais (UFMG), Cx. Postal 567, Av. Antônio Carlos 6627, Belo Horizonte, MG 31270-901, Brazil. *Corresponding author: alage@vet.ufmg.br

³ Departamento de Medicina Veterinária, Universidade Federal de Lavras, Cx. Postal 3037, Lavras, MG 37200-000, Brazil.

⁴ Laboratório Nacional Agropecuário, Ministério da Agricultura, Pecuária e Abastecimento, Av. Rômulo Joviano, Pedro Leopoldo, MG 33600-000, Brazil.

⁵ Departamento de Bacteriologia, Instituto Oswaldo Cruz, Fundação Oswaldo Cruz, Av. Brasil 4365, Manguinhos, Rio de Janeiro, RJ 21040-360, Brazil.

15 e 7 de 29 amostras foram adicionalmente capazes de invadir as células HeLa, respectivamente. Amostras de *C. jejuni*, *C. coli* e *C. fetus* subsp. *fetus* isoladas de fezes de animais foram capazes de aderir e invadir as células HeLa, enquanto amostras de *C. fetus* subsp. *fetus* isoladas a partir de amostras de trato genital bovino não foram invasivas, em células HeLa. O presente estudo mostrou que amostras de *C. jejuni* isoladas de primatas não-humanos e cães, *C. coli* isoladas de primatas não-humanos e porcos, e *C. fetus* subsp. *fetus* isolados a partir de fezes de bezerras foram capazes de aderir e invadir células HeLa. Além disso, a falta de capacidade invasiva de amostras de *C. fetus* subsp. *fetus* isoladas de trato genital bovino pode ser importante na patogênese das doenças das vias genitais causadas por esta bactéria.

TERMOS DE INDEXAÇÃO: Aderência, invasão, células HeLa, *Campylobacter* spp., frangos, cães, suínos, bovinos, animais domésticos, primatas não-humanos.

INTRODUCTION

Recently, much attention has been paid to the genus *Campylobacter* because isolation of its representative species from human, animal, and food samples is becoming increasingly frequent (Ogden et al. 2009, Newell et al. 2010). *Campylobacter* spp. are considered indigenous intestinal bacteria in most domestic and wild animals, and transmission to humans occurs through the ingestion of contaminated food and water, including non-pasteurized milk and undercooked poultry meat, or by direct contact with contaminated human or animal fecal material (Butzler 2004, Newell et al. 2010). Therefore, *Campylobacter* spp. is considered an important zoonotic agent. Pigs, cattle, dogs, cats, and both domestic and wild birds may be considered important reservoirs for *Campylobacter* spp. and thus possible sources of infection for humans. Infection with *C. jejuni* in humans is also associated with the development of Guillain-Barré syndrome (Nyati & Nyati 2013). *C. jejuni* and *C. coli* cause enterocolitis in humans, and *C. fetus* may cause not only bacteremia in immunodeficient individuals but also abortion and infertility in ruminants (Butzler 2004, Alves et al. 2011).

Interest in *Campylobacter* infections has increased because they are now widely seen as a public health issue. Some *Campylobacter* sp. cause enterocolitis in humans in both industrialized and developing countries. Enteric infections by *C. jejuni* and *C. coli* are among the main public health problems in industrialized countries (Butzler 2004, CDC 2012). In developing countries, the infection is frequently reported in children and is often asymptomatic due to immunity arising from frequent exposure to *Campylobacter* spp. (Ketley 1997).

Microbiological studies performed in Brazil have reported the isolation of *Campylobacter* spp. from chickens, calves, tamarins, and children with and without diarrhea, demonstrating the high isolation frequency of *Campylobacter* spp. in the country (Mendes 1985, Dias et al. 1990, Lage et al. 1992, Carvalho et al. 2001, Aquino et al. 2010, Quetz et al. 2012). Factors associated with the pathogenicity of *Campylobacter* spp. include the abilities to invade epithelial cells and produce enterotoxin and cytotoxin (Ketley 1997, Zilbauer et al. 2008, Dasti et al. 2010, O’Croinin & Backert 2012). Many enteric

pathogens, including *Campylobacter* spp., try to evade the host defense system and penetrate epithelial cells, thus causing inflammation, cell death, and bacteremia. The ability of *Campylobacter* spp. strains to adhere to and invade epithelial cells is considered the most important pathogenic mechanism of diarrhea by *Campylobacter* spp. (Ketley 1997, Dasti et al. 2010, O’Croinin & Backert 2012) and has been previously tested in several ways (Manninen et al. 1982, Fauchere et al. 1986, Fernandez & Trabulsi 1995, Graham 2002). Among these techniques, the gentamicin protection assay is used by many scientists to quantify the cell-associated and intracellular bacterial population and is considered to be the most precise of all detection methods (Melo et al. 1989, Konkel et al. 1992, Russell & Blake 1994, Wooldridge et al. 1996). Moreover, genes involved in the cellular invasion process are present in the genome of *Campylobacter* spp. (Lefebure et al. 2010, Ali et al. 2012).

Most studies concerned with the factors associated with the pathogenicity of *Campylobacter* spp. are performed with clinical isolates from human patients. Knowledge of the adherence and invasive abilities of strains isolated from domestic animals is scarce. Therefore, this study aimed to evaluate and compare the adherence and invasive abilities of *Campylobacter* spp. strains isolated from feces of different animal species and from the bovine genital tract.

MATERIALS AND METHODS

Bacterial strains and culture conditions. *Campylobacter* spp. strains isolated from bovine genital tract (n=8) and from feces (n=51) of calves, chickens, pigs, dogs, and non-human primates in Brazil and *C. fetus* subsp. *fetus* strains (n=4) isolated from bovine genital tracts in Canada were tested (Table 1). The *C. jejuni* 84sp strain was used as invasive positive control, and *C. coli* 49sp was employed as a non-invasive negative control (Carvalho et al. 2001). All strains isolated were previously identified by routine techniques (Hum et al. 1997, Debruyne et al. 2008). Bacterial strains were cultivated in BHI agar (Difco, Detroit, MI, USA) supplemented with 10% horse blood at 37°C in microaerophilic conditions (5% O₂, 5% H₂, 10% CO₂, and 80% N₂) for 48 hours. After this initial period, strains were stored at -70°C

Table 1. Origin of *Campylobacter* spp. strains tested for adherence and invasion

Origin	Species			Total
	<i>C. coli</i>	<i>C. fetus</i> subsp. <i>fetus</i>	<i>C. jejuni</i>	
Bovine genital tract				
Fetus		1		1
Bovine genital tract		4		4
Preputial washing		4		4
Vaginal mucus		3		3
Feces				
Calf		17	1	18
Dog			4	4
Non-human primate	9		7	16
Poultry	1		3	4
Swine	5		4	9
TOTAL	15	29	19	63

in thioglycolate broth (Merck, Darmstadt, HE, Germany) containing 20% glycerol (Mills & Gherna 1988).

Cell line. The assays were performed with HeLa cells (CCL2, American Type Culture Collection - ATCC, Manassas, VA, USA) kept in minimal essential medium (MEM) (Sigma, St Louis, MO, USA) supplemented with 10% fetal bovine serum (FBS) (Life Technologies, Carlsbad, CA, USA), 200 IU/ml penicillin G (Sigma, St Louis, MO, USA), and 50 µg/ml streptomycin (Sigma, St Louis, MO, USA). Cells were cultivated in plastic bottles kept in 5% CO₂ at 37°C for 24 to 48 hours. The confluent monolayer obtained in the surface of the bottle was trypsinized, diluted 1:3 in MEM with 5% FBS and antibiotics, and re-incubated in the same conditions.

Adherence and invasion assay. The assay was performed as previously described (Konkel & Joens 1989), with modifications. A suspension of HeLa cells in MEM supplemented with 5% FBS without antibiotics (4x10⁵ cells/mL) was prepared 18 hours before the beginning of the experiment as follows: to each well of a 48-well plates (Corning Incorporation, Corning, NY, USA), 550 µL cell suspension was added, and plates were incubated at 37°C in a 5% CO₂ humid atmosphere. After incubation, the medium was removed, and each well was washed ten times with PBS pH 7.2. Bacterial strains were suspended in PBS (10⁸ CFU/mL, equivalent to tube 2 of the MacFarland scale), after cultivation in BHI agar, and centrifuged at 14,000xg for 10 minutes. The pellet was resuspended in the same volume of MEM with 5% FBS without antibiotics and inoculated (140 µL) into quadruplicate wells of the 48-well plates. The multiplicity of infection used was 1,000 bacteria/cell. Infected monolayers were incubated for 3 hours at 37°C and 5% CO₂ to allow the bacteria to adhere to the cells. After incubation, the medium was removed, and the wells were washed ten times with 500 µL PBS. Thereafter, 140 µL of MEM with 5% FBS and 250 µg/mL gentamicin were added in two of the wells, and the same volume of medium without any antibiotic was added to the other two wells. The plates were then incubated at 37°C in a 5% CO₂ humid atmosphere for another 3 hours. After disposal of the medium, the wells were washed ten times with 500 µL PBS. Cells were lysed with 200 µL/well of 0.1% Triton X100 (LKB Bromma, Sollentuna, ULF, Sweden) for 10 minutes. Each strain was tested twice, and all tests were done in duplicate. The concentration of the bacterial

suspensions was determined in duplicate by the drop count method in BHI agar with 5% horse blood (Miles et al. 1938).

Strains were considered non-adherent and non-invasive (Ad-/Inv-) when no bacterial growth was detectable during bacterial counts made from the wells with and without gentamicin. Adherent but non-invasive strains (Ad+/Inv-) showed bacterial growth in wells without gentamicin treatment, but bacterial counts were equal or inferior to the negative control counts (strain 49sp) in the wells treated with antibiotic. Conversely, invasive strains (Ad+/Inv+) had bacterial growth in wells without gentamicin treatment and bacterial enumeration in wells treated with gentamicin were higher than the negative control counts. Results are expressed as the average number of bacteria adhering to and invading HeLa cells for two determinations. The percentages of adherence and invasion were calculated as previously described (Tay et al. 1996). The percentage of adherence for each strain was calculated from the bacterial populations of the wells without gentamicin as follows: % adherence = [(# intracellular bacteria + adherent bacteria/mL)/(# bacteria in inoculum/mL)]x100. The percentage of invasion for each strain was defined using the bacterial count of the wells treated with gentamicin, by the formula: % of invasion = [(# intracellular bacteria/mL)/(# bacteria in inoculum/mL)]x100.

Statistical analysis. The association between the ability to adhere to and invade HeLa cells by strains isolated from animals was evaluated by the χ^2 test or by Fisher's exact test, where appropriate (Siegel & Castellan 1979, Sampaio 2002).

RESULTS

Data for the adherence to and invasion of HeLa cells by *Campylobacter* spp. strains isolated from animals are shown in Table 2. The average of invasion by the positive control (*C. jejuni* strain 84sp) per well was 5 x 10³ bacteria; in comparison, the average of invasion for the negative control (*C. coli* strain 49sp) was 51 bacteria (0.000051%). All strains with rate of invasion higher than the negative control were considered invasive. The ability to adhere to and invade HeLa cells was very heterogeneous among the strains evaluated. The rate of invasion varied from 128 to 5.58x10⁵ bacteria per well (0.000128% to 0.55814%) and the rate of adherence

Table 2. Adherence and invasion of HeLa cells by *Campylobacter* spp. strains isolated from animals

Species	Host	Ad-/Inv ^a	Ad+/Inv ^b	Ad+/Inv ^c	Total
<i>C. jejuni</i>	Poultry	2	1	0	3
	Dog	3	0	1	4
	Swine	4	0	0	4
	Calf	0	1	0	1
	Non-human primate	5	0	2	7
Subtotal		14	2	3	19
<i>C. coli</i>	Poultry	1	0	0	1
	Swine	3	1	1	5
	Non-human primate	5	2	2	9
Subtotal		9	3	3	15
<i>C. fetus</i> subsp. <i>fetus</i>	Calf (feces)	6	4	7*	17
	Cattle (genital tract)	2	10	0	12
Subtotal		8	14	7	29
TOTAL		31	19	13	63

^a Nonadherent and noninvasive strains, ^b adherent and noninvasive strains, ^c adherent and invasive strains; *P=0.0039 by the Fisher's exact test among *C. fetus* groups.

yielded values between 5.3 and 2.09x10⁶ bacteria per well (0.0000053% and 2.09302%).

C. fetus subsp. *fetus* strains of fecal origin had the highest average values for both adherence and invasion rates. In contrast, *C. fetus* subsp. *fetus* strains of genital origin had lower averages of adherence and invasion rates when compared to the other strains tested (Fig.1). Among the fecal *C. fetus* subsp. *fetus* strains, 24% (4 of 17) adhered to HeLa cells without invasion (Ad⁺/Inv⁻), whereas 41% (7 of 17) were invasive (Ad⁺/Inv⁺) and 35% (6 of 17) were neither adherent nor invasive (Ad⁻/Inv⁻). Conversely, 83% (10 of 12) of the genital *C. fetus* subsp. *fetus* isolates adhered without cellular invasion (Ad⁺/Inv⁻); none were able to invade HeLa cells (Fig.1).

Of 63 strains tested, 32 (51%) were considered adherent or invasive, of which 19 (59%) adhered but did not invade (Ad⁺/Inv⁻) and 13 (41%) adhered to and invaded (Ad⁺/Inv⁺) HeLa cells (Table 2).

No strains of *Campylobacter* spp. isolated from chicken feces were able to invade HeLa cells. Only one out of four *Campylobacter* spp. strains isolated from dogs was considered Ad⁺/Inv⁺, a single strain of *C. jejuni*. In the same way, one of nine strains (*C. coli*) isolated from pigs was found to be invasive (Table 2).

Adherence ability (Ad⁺/Inv⁻) was present in 2 of 19 (10.5%) *C. jejuni* strains, whereas 3 of 19 (15.7%) invaded (Ad⁺/Inv⁺) HeLa cells. In regard to the 15 *C. coli* strains, 3 (20%) adhered (Ad⁺/Inv⁻) and another 3 invaded (Ad⁺/Inv⁺) HeLa cells. Adherence of *C. fetus* was verified in 14 of 29 (Ad⁺/Inv⁻)

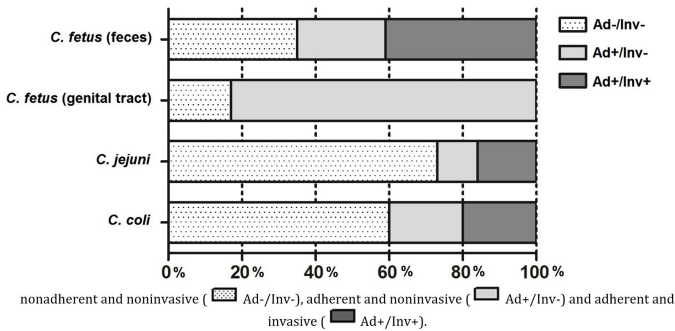


Fig.1. Percentage of different phenotypes of adherence to and invasiveness of HeLa cells for *Campylobacter* spp. strains isolated from animals.

strains, and invasion of HeLa cells was observed in 7 of 29 (Ad⁺/Inv⁺) strains (Table 2 and Fig.2).

Over half of the *C. jejuni* [73% (14 of 19)] and *C. coli* [60% (9 of 15)] strains did not adhere to or invade HeLa cells (Ad⁻/Inv⁻). However, only 28% (8 of 29) of *C. fetus* subsp. *fetus* strains lacked adherence or invasion capability. The cells were not adhered to or invaded (Ad⁻/Inv⁻) by 35% (6 of 17) of the intestinal *C. fetus* subsp. *fetus* strains and 17% (2 of 12) of the genital strains. There was no significant difference regarding the adherence and invasion abilities of *C. jejuni* and *C. coli* strains isolated from animals. The only significant difference between adherence and invasive abilities was between fecal and genital isolates of *C. fetus* subsp. *fetus* strains (Fisher's exact test, P=0.0039) (Table 2).

Table 3 shows that among the 16 strains isolated from non-human primates, 2 of 7 *C. jejuni* strains and 2 of 9 *C. coli* strains were invasive (Ad⁺/Inv⁺). Of the 7 *C. jejuni* strains isolated from these animals, four were isolated from *Callithrix penicillata* kept in a bioterium at the Center of the Institute of Biological Sciences, UFMG, during a diarrhea outbreak, and

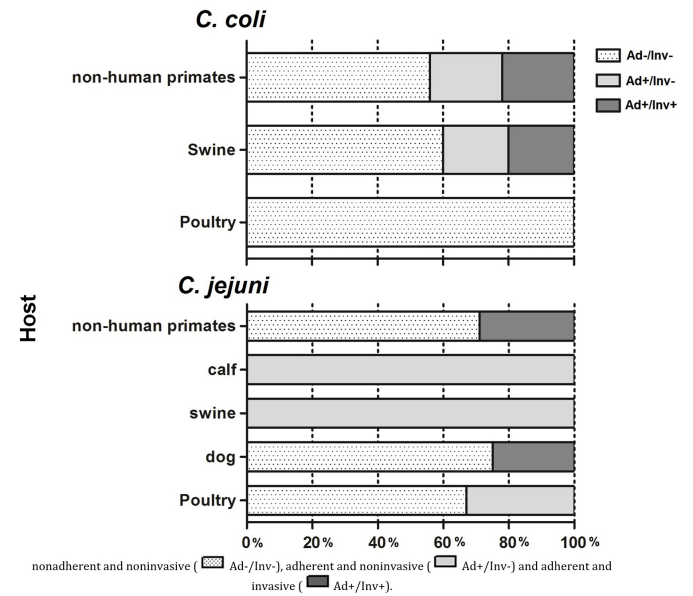


Fig.2. Percentage of different phenotypes of adherence to and invasiveness of HeLa cells for *Campylobacter coli* and *C. jejuni* strains isolated from animals.

Table 3. Adherence and invasion of HeLa cells by Campylobacter spp. strains isolated from non-human primates

Species	Host	Ad ⁻ /Inv ⁻ ^a	Ad ⁺ /Inv ⁻ ^b	Ad ⁺ /Inv ⁺ ^c	Total
<i>C. jejuni</i>	<i>Macaca mulatta</i>	1	0	0	1
	<i>M. fascicularis</i>	2	0	0	2
	<i>C. penicillata</i>	0	2	2	4
Subtotal		3	2	2	7
<i>C. coli</i>	<i>M. mulatta</i>	2	2	1	5
	<i>M. fascicularis</i>	3	0	1	4
Subtotal		5	2	2	9
TOTAL		8	4	4	16

^a Nonadherent and noninvasive strains, ^b adherent and noninvasive strains, ^c adherent and invasive strains.

three were isolated from *Macaca mulatta* and *M. fascicularis* kept in the Center for Laboratory Animals (Cecal/Fiocruz, RJ) during regular management. All *C. coli* strains were isolated from the latter animals.

Half of the *C. jejuni* strains isolated from *C. penicillata* adhered to and invaded the HeLa cells. No *C. jejuni* isolate from animals of the Cecal/Fiocruz, RJ (*M. mulatta* n=2; *M. fascicularis* n=1) was adherent or invasive (Ad⁺/Inv⁺).

Of the nine *C. coli* strains retrieved from non-human primates kept in the Cecal/Fiocruz, RJ, two strains (one isolated from *M. mulatta* and another from *M. fascicularis*) were adherent and invasive (Ad⁺/Inv⁺). An adherence-only phenotype (Ad⁺/Inv⁻) was found in two *C. coli* strains isolated from *M. mulatta*, whereas three isolates from *M. fascicularis* and two isolates from *M. mulatta* did not adhere to HeLa cells (Ad⁻/Inv⁻).

DISCUSSION

The invasion of eukaryotic cells is a critical step in the pathogenesis of many bacterial infections. The adherence and invasion assay used in this study is generally accepted as an *in vitro* method to determine the *in vivo* adherence and invasion abilities by several enteric pathogens (Konkel & Joens 1989).

The percentage of invasion for the negative control used in this study (*C. coli* 49sp) (0.000051%) was higher than that reported by Tay et al. (1996) (0.000039%), which used HEp-2 cells and *E. coli* K12 as negative control. *Campylobacter coli*, however, is a much better negative control for invasiveness of *Campylobacter* spp. than *Escherichia coli*.

There was great variation among the HeLa adherence and invasion abilities of the studied strains. A similar study tested clinical isolates and strains isolated from Malayan domestic birds in HEp-2 cells and found internalization indexes from 0.00078% to 0.0091% and adherence indexes from 0.000006% to 0.045% (Tay et al. 1996). All six of these strains adhered to HEp-2 cells, and four were able to invade. The strains isolated from animals in our study had lower adherence and invasion indices, with percentages close to those found by Tay et al. (1996), although some strains had higher percentages of adherence and invasion. Examination of the adherence and invasion capabilities of 173 *Campylobacter jejuni* and *C. coli* strains isolated from Canadian domestic birds were tested using INT-407 cells and a gentamicin protection assay (Nadeau et al. 2003); the results showed that 19% of the strains were invasive. Our study found that 25% of the strains isolated from poultry were able to adhere to HeLa cells but none were invasive. The difference found between the previous study and the present one may be related to the small number of strains tested, the different kind of cell line used in the tests, or the geographical differences of the animals from which the *Campylobacter* spp. strains were isolated.

Less than half of *C. jejuni* and *C. coli* strains isolated from animals in this study adhered to HeLa cells (Ad⁺/Inv⁻). This is in agreement with a previous report that studied invasion of HeLa cells by *C. jejuni* and *C. coli* strains isolated from humans (Fauchere et al. 1986). However, other researchers have reported that all *C. jejuni* and *C. coli* strains isolated from animals were able to adhere to and invade HeLa cells (Manninen et al. 1982, Fernandez & Trabulsi 1995). This discrepancy may be due to the use of other techniques, such as Giemsa staining and

immunofluorescence, respectively, and the small number of strains tested in those studies.

The adherence and invasion abilities of *C. jejuni* and *C. coli* strains isolated from pigs were tested in HEp-2 (Konkel & Joens 1989) and HeLa cells (Fernandez & Trabulsi 1995) and considered invasive, despite the low invasion indexes. Only 20% of the pig *C. coli* isolates in our study were able to invade HeLa cells (Ad⁺/Inv⁺); however, no *C. jejuni* strain isolated from pigs was able to adhere to or invade HeLa cells.

Little is known about the pathogenicity of *Campylobacter* spp. strains isolated from primates. In HEp-2 cells, the adherence and invasion abilities of *C. jejuni* strains isolated from non-human primates (*C. penicillata*) during a diarrhea outbreak in the bioterium of the Institut of Biological Sciences-UFGM was reported to be 80% (Carvalho 1992). Four of those *C. jejuni* strains were included in the current study, 50% of which tested positive for adherence and invasion. The difference in these results may be related to the number of strains used in this study or by the loss of virulence of these strains during maintenance and replication in the laboratory.

No *C. jejuni* strains isolated from non-human primates during animal management in the Cecal/Fiocruz, RJ, was able to adhere to or invade HeLa cells. Conversely, 22% of the *C. coli* strains isolated from these animals were able to invade (Ad⁺/Inv⁺); more than half the strains (55%) did not adhere to or invade HeLa cells (Ad⁻/Inv⁻). The difference between the results found for *C. jejuni* strains isolated from non-human primates in our study may be due to geographical differences. Another hypothesis to explain this difference is the occurrence of a diarrhea outbreak at the time of isolation of *C. jejuni* from *C. penicillata* by Carvalho (1992), whereas *C. jejuni* and *C. coli* strains isolated from *M. mulatta* and *M. fascicularis* were obtained during regular animal management, without any instances of diarrhea.

The adherence and invasion abilities of HeLa cells by *Campylobacter* spp. strains isolated from dogs were previously reported: one strain of *C. jejuni* and one of *C. coli*, both isolated from dogs, were considered invasive (Fernandez & Trabulsi 1995); another *C. jejuni* strain isolated from a dog was also invasive, as reported elsewhere (Manninen et al. 1982). In contrast, our study tested four *C. jejuni* isolates from dogs, of which only 25% were able to invade HeLa cells (Ad⁺/Inv⁺).

Both *C. fetus* subsp. *fetus* and *C. fetus* subsp. *venerealis* may cause disease in cattle, but they colonize different niches. The former colonizes the intestinal tract and may reach the placenta, ultimately resulting in sporadic abortions (Blaser et al. 2008, Alves et al. 2011), whereas the latter inhabits the genital tract and causes reproductive problems, such as repeat breeding, abortions, and sub-fertility (Alves et al. 2011). The adherence and invasion abilities of the fecal *C. fetus* subsp. *fetus* strains studied here did not correspond to previous findings reported by Graham (2002). In that study, reference *C. fetus* subsp. *fetus* strains and clinical isolates from human patients were analyzed; all strains tested positive for adherence and invasion, albeit for different incubation times. The differences between the percentages of adherence and invasion regarding the *C. fetus* subsp. *fetus* strains isolated from either animal feces or the bovine genital tract (P=0.0039) may be related to differences in pathogenicity between the two subspecies. The *C. fetus* subsp. *fetus* strains isolated from the intestinal tract are likely able to invade epithelial cells due to the need to

colonize the host's intestine and evade the intestinal peristaltic movements. In order to cross the intestinal mucosal barrier, interaction with epithelial cells is required (Graham 2002). During *C. fetus* subsp. *fetus* colonization of the genital tract, there is no need to invade but only to adhere to epithelial cells, which could be important in the pathogenesis of the genital tract diseases caused by this bacterium.

Our results contrast with findings reported in the literature. First, there are only a few studies regarding adherence and invasion of epithelial cells by *Campylobacter* spp. isolated from animals, and these studies use a small sampling size. Most reports address adherence and invasion of epithelial cells of human origin (e.g., HeLa cells) by *Campylobacter* spp. strains isolated from human patients. It has been reported that there is no significant difference in the ability of invasion by *Campylobacter* spp. strains in distinct human cell lines (INT 407, Hep-2, and HeLa), but only strains isolated from humans were tested (Konkel et al. 1992). There may be a difference in the use of human cell lines when adherence and invasion abilities of *Campylobacter* spp. strains are tested with animal isolates. Non-human cell lines could possibly express different types or amounts of surface proteins responsible for interaction with *Campylobacter* spp. Therefore, studies using animal cell lines (e.g., Vero, MDBK, and CHO-K1) and human cell lines to test adherence and invasion by strains retrieved from animals are needed. The small numbers of adherent and invasive *Campylobacter* spp. strains may also be justified by the number of times the strains tested were passaged in the laboratory. Recent clinical isolates have already been reported to have higher capacities for invasion of epithelial cells than after *in vivo* passage, which likely lowers this ability (Konkel & Joens 1989).

CONCLUSIONS

The present study showed that *Campylobacter jejuni* isolated from primates and dogs, *C. coli* isolated from non-human primates and pigs, and *C. fetus* subsp. *fetus* isolated from calf feces have the ability to adhere to and to invade HeLa cells.

The inability of *C. fetus* subsp. *fetus* strains isolated from bovine genital tract to invade could be important in the pathogenesis of the genital tract diseases caused by this bacterium.

REFERENCES

Ali A., Soares S.C., Santos A.R., Guimaraes L.C., Barbosa E., Almeida S.S., Abreu V.A., Carneiro A.R., Ramos R.T., Bakhtiar S.M., Hassan S.S., Usery D.W., On S., Silva A., Schneider M.P., Lage A.P., Miyoshi A. & Azevedo V. 2012. *Campylobacter fetus* subspecies: comparative genomics and prediction of potential virulence targets. *Gene* 508(2):145-156. <<http://dx.doi.org/10.1016/j.gene.2012.07.070>> <PMid:22890137>

Alves T.M., Stynen A.P.R., Miranda K.L. & Lage A.P. 2011. Campilobacteriose genital bovina e tricomonose genital bovina: epidemiologia, diagnóstico e controle. *Pesq. Vet. Bras.* 31(4):336-344. <<http://dx.doi.org/10.1590/S0100-736X2011000400011>>

Aquino M.H., Filgueiras A.L., Matos R., Santos K.R., Ferreira T., Ferreira M.C., Teixeira L.M. & Tibana A. 2010. Diversity of *Campylobacter jejuni* and *Campylobacter coli* genotypes from human and animal sources from Rio de Janeiro, Brazil. *Res. Vet. Sci.* 88(2):214-217. <<http://dx.doi.org/10.1016/j.rvsc.2009.08.005>> <PMid:19765787>

Blaser M.J., Newell D.G., Thompson S.A. & Zechner E.L. 2008. Pathogenesis of *Campylobacter fetus*, p.401-428. In: Nachamkin I., Szymanski C.M. & Blaser M.J. (Eds), *Campylobacter*. ASM Press, Washington, DC.

Butzler J.P. 2004. *Campylobacter*, from obscurity to celebrity. *Clin. Microbiol. Infect.* 10(10):868-876. <<http://dx.doi.org/10.1111/j.1469-0691.2004.00983.x>> <PMid:15373879>

Carvalho A.C. 1992. Fatores de virulência de amostras de *Campylobacter jejuni* isoladas de *Callithrix penicillata* com diarreia. Minas Gerais, Brasil. Dissertação de Mestrado, Instituto de Ciências Biológicas, Universidade Federal de Minas Gerais, Belo Horizonte, MG. 81p.

Carvalho A.C., Ruiz-Palacios G.M., Ramos-Cervantes P., Cervantes L.E., Jiang X. & Pickering L.K. 2001. Molecular characterization of invasive and noninvasive *Campylobacter jejuni* and *Campylobacter coli* isolates. *J. Clin. Microbiol.* 39(4):1353-1359. <<http://dx.doi.org/10.1128/JCM.39.4.1353-1359.2001>> <PMid:11283056>

CDC 2012. Foodborne Diseases Active Surveillance Network (FoodNet): FoodNet surveillance. Report for 2011, Centers for Disease Control and Prevention, Atlanta, Georgia. Available at <https://www.cdc.gov/foodnet/PDFs/2012_annual_report_508c.pdf> Access on Apr 12, 2015.

Dasti J.I., Tareen A.M., Lugert R., Zautner A.E. & Gross U. 2010. *Campylobacter jejuni*: a brief overview on pathogenicity-associated factors and disease-mediating mechanisms. *Int. J. Med. Microbiol.* 300(4):205-211. <<http://dx.doi.org/10.1016/j.ijmm.2009.07.002>> <PMid:19665925>

Debruyne L., Gevers D. & Vandamme P. 2008. Taxonomy of the family, p.3-26. In: Nachamkin I., Szymanski C.M. & Blaser M.J. (Eds), *Campylobacter*. ASM Press, Washington, DC.

Dias T.C., Queiroz D.M., Mendes E.N. & Peres J.N. 1990. Chicken carcasses as a source of *Campylobacter jejuni* in Belo Horizonte, Brazil. *Revta Inst. Med. Trop. São Paulo* 32(6):414-418.

Fauchere J.L., Rosenau A., Veron M., Moyer E.N., Richard S. & Pfister A. 1986. Association with HeLa cells of *Campylobacter jejuni* and *Campylobacter coli* isolated from human feces. *Infect. Immun.* 54(2):283-287. <PMid:3770943>

Fernandez H. & Trabulsi L.R. 1995. Invasive and enterotoxic properties in *Campylobacter jejuni* and *Campylobacter coli* strains isolated from humans and animals. *Biol. Res.* 28(3):205-210. <PMid:9251750>

Graham L.L. 2002. *Campylobacter fetus* adheres to and enters INT 407 cells. *Can. J. Microbiol.* 48(11):995-1007. <<http://dx.doi.org/10.1139/w02-096>> <PMid:12556127>

Hum S., Quinn K., Brunner J. & On S.L. 1997. Evaluation of a PCR assay for identification and differentiation of *Campylobacter fetus* subspecies. *Aust. Vet. J.* 75(11):827-831. <<http://dx.doi.org/10.1111/j.1751-0813.1997.tb15665.x>> <PMid:9404619>

Ketley J.M. 1997. Pathogenesis of enteric infection by *Campylobacter*. *Microbiol.* 143(1):5-21. <<http://dx.doi.org/10.1099/00221287-143-1-5>> <PMid:9025274>

Konkel M.E. & Joens L.A. 1989. Adhesion to and invasion of HEP-2 cells by *Campylobacter* spp. *Infect. Immun.* 57(10):2984-2990. <PMid:2550368>

Konkel M.E., Corwin M.D., Joens L.A. & Cieplak W. 1992. Factors that influence the interaction of *Campylobacter jejuni* with cultured mammalian cells. *J. Med. Microbiol.* 37(1):30-37. <<http://dx.doi.org/10.1099/00222615-37-1-30>> <PMid:1625313>

Lage A., Carvalho A. & Leite R. 1992. Comparison of procedures for isolating *Campylobacter* sp. from diarrhetic and normal calves. *Revta Microbiol.* 23(3):151-154.

Lefebvre T., Bitar P.D., Suzuki H. & Stanhope M.J. 2010. Evolutionary dynamics of complete *Campylobacter* pan-genomes and the bacterial species concept. *Genome Biol. Evol.* 2:646-655. <<http://dx.doi.org/10.1093/gbe/evq048>> <PMid:20688752>

Manninen K.I., Prescott J.F. & Dohoo I.R. 1982. Pathogenicity of *Campylobacter jejuni* isolates from animals and humans. *Infect. Immun.* 38(1):46-52. <PMid:7141696>

- Melo M.A., Gabbiani G. & Pechère J.C. 1989. Cellular events and intracellular survival of *Campylobacter jejuni* during infection of HEp-2 cells. *Infect. Immun.* 57(7):2214-2222. <PMid:2731988>
- Mendes E.N. 1985. Frequência de *Campylobacter jejuni* em crianças com e sem diarreia em Belo Horizonte. Dissertação de Mestrado, Instituto de Ciências Biológicas, Universidade Federal de Minas Gerais, Belo Horizonte, MG. 109p.
- Miles A.A., Misra S.S. & Irwin J.O. 1938. The estimation of the bactericidal power of the blood. *J. Hyg.* 38(6):732-749. <http://dx.doi.org/10.1017/S002217240001158X> <PMid:20475467>
- Mills C.K. & Gherna R.L. 1988. Cryopreservation studies of *Campylobacter*. *Cryobiology* 25(2):148-152. <http://dx.doi.org/10.1016/0011-2240(88)90008-9> <PMid:3371059>
- Nadeau E., Messier S. & Quessy S. 2003. Comparison of *Campylobacter* isolates from poultry and humans: association between in vitro virulence properties, biotypes, and pulsed-field gel electrophoresis clusters. *Appl. Environ. Microbiol.* 69(10):6316-6320. <http://dx.doi.org/10.1128/AEM.69.10.6316-6320.2003> <PMid:14532099>
- Newell D.G., Koopmans M., Verhoef L., Duizer E., Aidara-Kane A., Sprong H., Opsteegh M., Langelaar M., Threlfall J., Scheutz F., Van Der Giessen J. & Kruse H. 2010. Food-borne diseases: the challenges of 20 years ago still persist while new ones continue to emerge. *Int. J. Food Microbiol.* 139(Suppl. 1):S3-S15. <http://dx.doi.org/10.1016/j.ijfoodmicro.2010.01.021> <PMid:20153070>
- Nyati K.K. & Nyati R. 2013. Role of *Campylobacter jejuni* infection in the pathogenesis of Guillain-Barre syndrome: an update. *Biomed. Res. Int.* 2013:852195. <http://dx.doi.org/10.1155/2013/852195> <PMid:24000328>
- O'Croinin T. & Backert S. 2012. Host epithelial cell invasion by *Campylobacter jejuni*: trigger or zipper mechanism? *Front Cell Infect. Microbiol.* 2:25. <http://dx.doi.org/10.3389/fcimb.2012.00025> <PMid:22919617>
- Ogden I.D., Dallas J.F., Macrae M., Rotariu O., Reay K.W., Leitch M., Thomson A.P., Sheppard S.K., Maiden M., Forbes K.J. & Strachan N.J. 2009. *Campylobacter* excreted into the environment by animal sources: prevalence, concentration shed, and host association. *Foodborne Pathog. Dis.* 6(10):1161-1170. <http://dx.doi.org/10.1089/fpd.2009.0327> <PMid:19839759>
- Quetz J.S., Lima I.F.N., Havt A., Prata M.M.G., Cavalcante P.A., Medeiros P.H.Q.S., Cid D.A.C., Moraes M.L., Rey L.C., Soares A.M., Mota R.M.S., Weigl B.H., Guerrant R.L. & Lima A.A.M. 2012. *Campylobacter jejuni* infection and virulence-associated genes in children with moderate to severe diarrhoea admitted to emergency rooms in northeastern Brazil. *J. Med. Microbiol.* 61(Pt 4):507-513. <http://dx.doi.org/10.1099/jmm.0.040600-0> <PMid:22174372>
- Russell R.G. & Blake Junior D.C. 1994. Cell association and invasion of Caco-2 cells by *Campylobacter jejuni*. *Infect. Immun.* 62(9):3773-3779. <PMid:8063393>
- Sampaio I.B.M. 2002. Estatística Aplicada à Experimentação Animal. Fundação de Ensino e Pesquisa em Medicina Veterinária e Zootecnia, Belo Horizonte. 265p.
- Siegel S.N. & Castellan J. 1979. Estatística nao-parametrica para as ciencias do comportamento. Artmed, Porto Alegre. 350p.
- Tay S.T., Devi S., Puthuchearry S. & Kautner I. 1996. In vitro demonstration of the invasive ability of *Campylobacters*. *Zentralblatt für Bakteriologie* 283(3):306-313. <http://dx.doi.org/10.1016/S0934-8840(96)80064-8>
- Wooldridge K.G., Williams P.H. & Ketley J.M. 1996. Host signal transduction and endocytosis of *Campylobacter jejuni*. *Microb. Pathog.* 21(4):299-305. <http://dx.doi.org/10.1006/mpat.1996.0063> <PMid:8905618>
- Zilbauer M., Dorrell N., Wren B.W. & Bajaj-Elliott M. 2008. *Campylobacter jejuni*-mediated disease pathogenesis: an update. *Trans. R. Soc. Trop. Med. Hyg.* 102(2):123-129. <http://dx.doi.org/10.1016/j.trstmh.2007.09.019> <PMid:18023831>