

DIFFERENTIATED RISK MODELS IN PORTFOLIO OPTIMIZATION: A COMPARATIVE ANALYSIS OF THE DEGREE OF DIVERSIFICATION AND PERFORMANCE IN THE SÃO PAULO STOCK EXCHANGE (BOVESPA)

Ivan Ricardo Gartner

Received July 8, 2010 / Accepted August 26, 2011

ABSTRACT. Faced with so many risk modeling alternatives in portfolio optimization, several questions arise regarding their legitimacy, utility and applicability. In particular, a question arises involving the adherence of the alternative models with regard to the basic presupposition of Markowitz's classical model, with regard to the concept of diversification as a means of controlling the relationship between risk and return within a process of optimization. In this context, the aim of this article is to explore the risk-differentiated configurations that entropy can provide, from the point of view of the repercussions that these have on the degree of diversification and on portfolios performance. The reach of this objective requires that a comparative analysis is made between models that include entropy in their formulation and the classic Markowitz model. In order to contribute to this debate, this article proposes that adaptations are made to the models of relative minimum entropy and of maximum entropy, so that these can be applied to investment portfolio optimizations. The comparative analysis was based on performance indicators and on a ratio of the degree of portfolio diversification. The portfolios were formed by considering a sample of fourteen assets that compose the IBOVESPA, which were projected during the period from January 2007 to December 2009, and took into account the matrices of covariance that were formed as from January 1999. When comparing the Markowitz model with two models that were constructed to represent new risk configurations based on entropy optimization, the present study concluded that the first model was far superior to the others. Not only did the Markowitz model present better accumulated nominal yields, it also presented a far greater predictive efficiency and better effective performance, when considering the *trade-off* between risk and return. However, with regards to diversification, the Markowitz model concentrated its weights in only five of the fourteen sample assets. Contrary to these two models, the maximum entropy model showed a level of diversification that was very close to the maximum level, which would be a situation that is far more in keeping with Markowitz's diversification precepts. However, these models showed the worst results in the comparative analysis of performance.

Keywords: diversification of investments, portfolio optimization models, entropy optimization models.

1 INTRODUCTION

The model of portfolio selection proposed by Markowitz (1952) led to the Modern Portfolio Theory (MPT) and became a watershed in the area of finance. Before Markowitz's proposal, the predominating models were based on the idea of the existence of an optimal portfolio obtained through the maximization of portfolio returns, more often composed of only a single asset. Markowitz argued that this idea was mistaken, since one single asset involved a high level of exposure to variability and he proved mathematically that investors should diversify their portfolios so as to reduce their risks, since a set of portfolios existed that combined higher gains with particular levels of risk, forming an efficient frontier.

Attaining such an efficient frontier is possible because of the multiple combinations of assets, which can be obtained through mathematical programming models, the only inputs involved being the level of return and the proposed portfolios risks, which are collected based on a series of returns on the assets analyzed. This means that such an approach is characterized as a mean-variance analysis (MVA), since the average refers to the assets returns and the variance is the way of measuring the risks involved.

A few years after putting forward his proposal, Markowitz (1959) himself recognized the limitations of considering variance as a means of measuring risk, since a symmetric measure suggests the same penalties for above and below the average deviations. The harshest criticisms leveled against this deficiency came from Sharpe (1963, 1964), which led to his *Capital Asset Pricing Model* proposal.

Authors such as Bawa (1982), Ogryczak & Ruszczyński (1999) presented portfolio optimization models that take into account symmetric risk assessment, such as expected losses and semi-variance definitions. Following this same line of thought, Steinbach (2001) presented a revision of these models and proposed *downside risk* methodologies applied to situations of multiple periods through dynamic programming models.

Faced with so many risk modeling alternatives in portfolio optimization, several questions arise regarding their legitimacy, utility and applicability. In particular, a question arises involving the adherence of the alternative models with regard to the basic presupposition of Markowitz's classical model, in relation to the concept of diversification as a means of controlling the relationship between risk and return within a process of optimization.

This question is pertinent since, according to Rubinstein (2002), the most important aspect of Markowitz's work was to show that it is not the asset risk that is intrinsically important to the investor, but rather the contribution that the asset makes to the total variance of the portfolio, based on its covariance with all other assets therein included.

As a result of this question, there are some authors who have sought alternative ways to model portfolio optimization risks that are more in line with the principle of diversification. This is the objective of studies derived from Shannon's theory of communication (1948), which associate entropic optimization with the selection of portfolios, as may be seen in the work of Hua & Xingsi (2003) and Bera & Park (2008).

Faced with the question of the adherence of portfolio optimization models in relation to the precepts of diversification, the aim of this article is to explore the risk-differentiated configurations that entropy can provide, from the point of view of the repercussions that these have on the degree of diversification and investment portfolios performance.

The reach of this objective requires that a comparative analysis is made between models that include entropy in their formulation and the classic Markowitz model. In order to contribute to this debate, this article proposes that adaptations are made to the relative minimum entropy and to the maximum entropy, so that these can be applied to investment portfolio optimizations.

The comparative analysis was based on performance indicators, such as the Sharpe ratio and the Alpha and Beta parameters, and on a ratio of the degree of the portfolio diversifications. The portfolios were formed by considering a sample of fourteen assets that compose the IBOVESPA, which were projected during the period from January 2007 to December 2009, and took into account the matrices of covariances that were formed as from January 1999. This made it possible for the covariance matrices to capture the different facets of stock market behaviour, notably during the Bull market, Bear market and Flat (or declining price) phases, with their corresponding moments of rallies and cycles of consolidation and correction.

This article is divided into four sections. The first section deals with the main theme, uncertainties and objectives. The second section presents the theoretical framework of Markowitz's classic model and the entropy-based models, as well as its adherence to the portfolio theory. The third section presents an empirical analysis related to the application of the proposed models, focusing on a comparative analysis of how the models have been adapted to the principle of diversification, as well as the repercussions in terms of the performance of portfolios. The fourth section presents the final considerations and recommendation for future studies.

2 PORTFOLIO OPTIMIZATION MODELS: FROM MARKOWITZ TO ENTROPY OPTIMIZATION

Managing investment portfolios has come up against increasing problems, in view of the fact that financial markets have become increasingly exposed to exogenous and endogenous factors, related to unprecedented periods of instability. In this context, selecting portfolios is a decisive factor when managing investments for any class of investors, be they mutual fund organizations, investment firms, insurance companies, financial and non-financial groups, for-profit (business) and nonprofit organizations and individual investors in general.

The Mean-Variance Analysis proposed by Markowitz (1952) provides a mechanism to select asset portfolios, based on combinations of returns and risks. The basic concept of the model is to foresee decision-making in a single-period regime, in other words, from moment t_0 to moment t_1 and is related to risky assets.

Fifty years after the publication of the Markowitz model, hundreds of articles can be found in the international academic-scientific field, that were written in an attempt to overcome the theoretical and practical deficiencies of this classic model, proposing extensions and new applications to deal with the problem of portfolio selection.

2.1 The classic Markowitz Model: a Mean-Variance Analysis (MVA)

The classic Markowitz Model (1987) requires inputs that are extracted from the market price series of the assets analyzed. Based on these price series, a calculation is made of the returns and variances as well as the covariance between assets.

The periodic random returns are calculated based on the i -th asset series which are given from r_{it} , $i = 1, \dots, n$, $t = 1, \dots, T$, obtained from the continual formulation of $r_{it} = \ln(v_{it}) - \ln(v_{it-1})$, where v_{it} refers to the price of the i -th asset during period t . A calculation of the average returns of the i -th share can be defined as the geometric mean of its returns:

$$\bar{r}_i = \left[\prod_{t=1}^T (1 + r_{it}) \right]^{1/T} - 1 \tag{1}$$

and the set of average returns of various i assets forms the vector:

$$\bar{\mathbf{r}} = \begin{pmatrix} \bar{r}_1 \\ \bar{r}_2 \\ \vdots \\ \bar{r}_n \end{pmatrix}$$

Markowitz stated that it was not enough only to consider the individual characteristics of the assets, since forming a portfolio should take into account ways by which assets can be moved conjointly over a period of time. The covariance σ_{ij} is the basic measurement of conjoint variability between two assets i and j , and is calculated by:

$$\sigma_{ij} = \sigma_{ji} = 1/T \cdot \sum_{t=1}^T (r_{it} - \bar{r}_i)(r_{jt} - \bar{r}_j) \tag{2}$$

being that $\sigma_{ij} = \sigma_{ji}$, while $i \neq j$ and $\sigma_{ii} = \sigma^y$, while $i = j$. If the returns of assets i and j move in the same direction, the result is $\sigma_{ij} > 0$; otherwise, the result is $\sigma_{ij} < 0$.

The importance of the measurement of this conjoint variability is the strength of the diversification proposed by Markowitz, where the objective is to combine assets that move in opposite directions, so that a drop in the price of a portfolio asset can be compensated by the rise in the price of another asset within the same portfolio.

In aggregated terms, the paired relationships of n assets are incorporated into the covariance matrix \mathbf{V} :

$$\mathbf{V} = \begin{pmatrix} \sigma_{11} & \sigma_{12} & \cdots & \sigma_{1n} \\ \sigma_{21} & \sigma_{22} & \cdots & \sigma_{2n} \\ \vdots & \vdots & \ddots & \vdots \\ \sigma_{n1} & \sigma_{n2} & \cdots & \sigma_{nn} \end{pmatrix} \tag{3}$$

In the composition of a certain p portfolio, the participation of an i -th asset is represented by w_i , $i = 1, \dots, n$, in that $\sum_{i=1}^n w_i = 1$. These participations are positive ($w_i \geq 0$), when short-

selling is not considered, and can be negative in the opposite case. The set of participations of assets i in the portfolio p compound the vector:

$$\mathbf{w} = \begin{pmatrix} w_1 \\ w_2 \\ \vdots \\ w_n \end{pmatrix}$$

The portfolio return for the n assets can be expressed thus:

$$\bar{r}_p = \sum_{i=1}^n \bar{r}_i w_i \quad (4)$$

which assumes a matrix form:

$$\bar{r}_p = \mathbf{w}' \bar{\mathbf{r}} \quad (4')$$

where $\bar{\mathbf{r}}$ is the vector of the average returns of the assets analyzed.

The risk measurement of a portfolio formed by n assets is derived from the paired relationship that exists between portfolio assets, weighted by their respective weights, and can be calculated as follows:

$$\sigma_p^2 = \sum_{i=1}^n \sum_{j=1}^n w_i w_j \sigma_{ij}. \quad (5)$$

In terms of matrix, the covariance of a portfolio may be calculated by

$$\sigma_p^2 = \mathbf{w}' \mathbf{V} \mathbf{w}, \quad (5')$$

where \mathbf{w} is the weight vector, \mathbf{w}' is the transposed weight vector and \mathbf{V} is the previously defined covariance matrix. In order to calculate the standard deviation, all one has to do is to solve $\sigma_p = \sqrt{\mathbf{w}' \mathbf{V} \mathbf{w}}$.

The construction of an optimal portfolio as suggested by Markowitz can be done by means of mathematical programming models that are formed based on combinations between asset risks and returns. The basic portfolio optimization model, which uses quadratic programming, is based on minimizing portfolio risks given a certain level of portfolio return:

$$\begin{aligned} \min_w \sigma_p^2 &= \mathbf{w}' \mathbf{V} \mathbf{w} \\ \text{s.t.} & \quad \mathbf{w}' \bar{\mathbf{r}} \geq \bar{r}_{pd} \\ & \quad \mathbf{w}' \mathbf{u} = 1 \end{aligned} \quad (6)$$

where \mathbf{u} is a unit vector:

$$\mathbf{u} = \begin{pmatrix} 1 \\ 1 \\ \vdots \\ 1 \end{pmatrix},$$

\bar{r}_{pd} is the level of the required return of a portfolio. The solution of this model for values of \bar{r}_{pd} in the interval between $\bar{r}_{p \min}$ and $\bar{r}_{p \max}$ results in all the portfolios being efficient. A possible solution for the model may be found through Lagrange multipliers:

$$L(w, \lambda_1, \lambda_2) = \mathbf{w}'\mathbf{V}\mathbf{w} - \lambda_1 (\mathbf{w}'\bar{\mathbf{r}} - \bar{r}_{pd}) - \lambda_2 (\mathbf{w}'\mathbf{u} - 1) \tag{7}$$

Model (6) may be re-arranged so as to combine the maximum portfolio return with the same level of risk, which will result in the following nonlinear programming formulation:

$$\begin{aligned} \max_w \bar{r}_p &= \mathbf{w}'\bar{\mathbf{r}} \\ \text{s.t.} & \mathbf{w}'\mathbf{V}\mathbf{w} \leq \sigma_d^2 \\ & \mathbf{w}'\mathbf{u} = 1 \end{aligned} \tag{8}$$

where σ_d^2 is the desired level of risk and a possible solution may be found through the Lagrange multipliers.

$$L(w, \lambda_1, \lambda_2) = \mathbf{w}'\bar{\mathbf{r}} - \lambda_1 (\mathbf{w}'\mathbf{V}\mathbf{w} - \sigma_d^2) - \lambda_2 (\mathbf{w}'\mathbf{u} - 1) \tag{9}$$

Model (8) may also be rearranged, so as to incorporate a risk aversion coefficient, which will result in the following formulation of quadratic programming:

$$\begin{aligned} \max_w \bar{r}_p - \delta\sigma_p^2 &= \mathbf{w}'\bar{\mathbf{r}} - \delta\mathbf{w}'\mathbf{V}\mathbf{w} \\ \text{s.t.} & \mathbf{w}'\mathbf{u} = 1 \end{aligned} \tag{10}$$

where δ is a risk aversion constant and a possible solution may be found through the Lagrange multipliers:

$$L(w, \lambda_1) = \mathbf{w}'\bar{\mathbf{r}} - \delta\mathbf{w}'\mathbf{V}\mathbf{w} - \lambda_1 (\mathbf{w}'\mathbf{u} - 1) \tag{11}$$

In all (6), (8) and (10) cases, a restriction to $w_i \geq$ should be inserted for situations where short-selling is not permitted.

2.2 Extension of the Markowitz model: the sharpe model

One of the preoccupations that come after portfolio optimization is how to define the instruments that control their performance. Sharpe (1966) identified the lack of specific methodologies to measure portfolio performances, especially when dealing with mutual funds. Sharpe’s proposal was to create an index that reflected the excess return on market portfolios per unit of risk ($\theta g = E(r_p) - r_f/\sigma$). Since the excess return is on a risk-free asset (r_f), this index falls back on the point where the Capital Allocation Line (CAL) tangencies the efficiency frontier of portfolio. Thus, this index may also be used to optimize portfolios in the following way:

$$\begin{aligned} \max_w \theta = (\bar{r}_p - r_f)/\sigma_p &= (\mathbf{w}'\bar{\mathbf{r}} - r_f)/\sqrt{\mathbf{w}'\mathbf{V}\mathbf{w}} \\ \text{s.t.} & \mathbf{w}'\mathbf{u} = 1 \end{aligned} \tag{12}$$

The solution to this problem results from a portfolio with a maximum Sharpe index, which is the one with the highest relation of risk and return within the assets, known as an optimal risk portfolio. This problem can be solved using the following Lagrange formulation:

$$L(w, \lambda_1) = \left[(\mathbf{w}'\bar{\mathbf{r}} - r_f) / \sqrt{\mathbf{w}'\mathbf{V}\mathbf{w}} \right] - \lambda_1 (\mathbf{w}'\mathbf{u} - 1) \quad (13)$$

The portfolio return for this optimal portfolio may be used to define the desired portfolio return (r_{pd}), which is a constraint for the optimal portfolio reaches a given level of performance.

2.3 Entropy modeling as a risk measurement in portfolio selection

Entropy is a concept originally discussed by Ludwig Boltzmann, and upon which the Second Law of Thermodynamic is based and associated with the degree of disorder that exists in the thermodynamic systems. Shannon (1948) widened this concept to include the theory of information, when he began to use entropy to describe the quantity of information that existed on the state of a determined system or event.

The study carried out by Philippatos & Wilson (1972) was a pioneering study to try to associate Shannon's Entropy with a measure of risk in portfolio optimization. In their proposal, the model of entropic optimization takes into account a combination of conjoint probabilities and conditions of asset returns, as a means of obtaining the weights system for a portfolio, the validity of which was confirmed in an empirical analysis that included a sampling of 50 randomly selected NYSE and Dow Jones Industrial index assets, during the period between January 1957 and December 1970. This form of entropy-based portfolio optimization was severely criticized by White (1974), whose main point of contestation related to the fact that the portfolio entropy would be independent of weights, which did not justify its use. However, Philippatos & Wilson (1974) put forward comments that were technically sustainable to justify their proposal, proving in a simple manner that the entropy of a portfolio is a function of the weights attributed to its elements.

After this controversy, this line of study on applied entropy to select portfolios seems to have lost some of its force, since Philippatos & Wilson themselves (1974, page 215) state that: "... amongst the disadvantages of the measures of the theory of information and the theory of finance, are the following: (1) the measure of uncertainty or entropy has not been philosophically integrated into the disciplines of economy, although this has been partially integrated into the theory of choice, of conflict and general behaviour, which are typically explored by social scientists ...".

Various texts may be found in present-day literature – also available in Brazil – that attempt to resuscitate this question. Cassettari (2003) presents an entropy-based model of optimization, which takes into account the application of the same methodology proposed by Philippatos & Wilson (1972). However, although preliminary results have attested to the viability of this model, the text showed little interest in the legitimacy of an empirical analysis or in evaluating the repercussions that this model has had in terms of performance.

More recent concerns that have stimulated renewed interest in the application of entropic optimization in portfolio selection, is related to the fact that many of the extensions of the classic Markowitz model, including Markowitz’s model itself, have not provided convergent solutions to the principle of diversification. In accordance with Hua & Xingsi (2003) and Bera & Park (2008), entropy is an alternative means to deal with a situation in which optimization based on a mean-variance analysis (MVA) is contrary to the notion of diversification, often driving portfolios to a high concentration of weights in a small number of assets.

2.4 Portfolio optimization models that include entropy

According to Shannon’s view (1948), entropy $H(X)$ can be defined as the quantity of available information about the state of a system $X = (x_1, x_2, \dots, x_n)$, with a probability vector of $\mathbf{p}(\mathbf{x})[P(x) = (p_1(x_1), p_2(x_2), \dots, p_n(x_n))]$, where $p_i(x_i) \geq 0$ and $\sum_{i=1}^n p_i(x_i) = 1$, justify its use as a measure of uncertainty. This means that an entropy $H(X)$ of a random variable X is defined by the equation:

$$H(X) = - \sum_{i=1}^n p_i(x_i) \ln p_i(x_i) \tag{14}$$

Since $H(X)$ supplies a measure of disorder in a system, or in an expected value and in a probability distribution, the entropy can be used to measure a portfolio’s degree of diversification. In order to do so, considering that $p_i(x_i)$ can be replaced by weight w_i , the value of $H(X)$ is zero if the portfolio consists of only one asset and if the portfolio has a maximum value and is uniformly distributed ($p_i(x_i) = w_i = 1/n$).

This interpretation is based on attribute 2 of part 6 (*Choice, Uncertainty and Entropy*) of the study presented by Shannon (1948, page 388), which states that: “... if all the $p_i(x_i)$ are equal ($p_i(x_i) = 1/n$), then $H(X)$ must be a growing monotonic function of n . With equally probably events, there is more choice, or uncertainty, if more possible events exist. . .”. These concepts are coherent with the precepts of diversification proposed by Markowitz, which justifies studies on the use of entropy in portfolio optimization.

Although the study made by Philippatos & Wilson (1972) presented a form of calculating the conjoint entropy of assets returns, this formulation was shown to be entirely independent of the classic Markowitz model. Thus, Hua & Xingsi (2003) presented a formulation proposal in which entropy represents one shrinkage factor of weights in the objective-function, in the following way:

$$\begin{aligned} \min_w \sigma_p^2 - \psi \sum_i^n w_i \ln w_i &= \mathbf{w}'\mathbf{V}\mathbf{w} - \psi \mathbf{w}'\ln\mathbf{w} \\ \text{s.t.} & \mathbf{w}'\bar{\mathbf{r}} \geq \bar{r}_{pd} \\ & \mathbf{w}'\mathbf{u} = 1 \end{aligned} \tag{15}$$

where $\psi (\psi \geq 0)$ is a momentary factor that adjusts the entropic effect on the model. The greater the value of ψ , the greater entropic effect on the model, since there is a gradual reduction in the

objective-functions values; if $\psi = 0$, one only has the optimization according to Markowitz's original model.

The inclusion of ψ is based on the proposal put forward by Shannon (1948, page 389), which presents an alternative way to calculate an H entropy, by using

$$H(X) = -K \sum_{i=1}^n p_i(x_i) \ln p_i(x_i),$$

where K is a constant positive to adjust the measure. A solution of (15) by Lagrange acquires a format:

$$L(w, \lambda_1, \lambda_2) = \mathbf{w}'\mathbf{V}\mathbf{w} - \psi \mathbf{w}' \ln \mathbf{w} - \lambda_1 (\mathbf{w}'\bar{\mathbf{r}} - \bar{r}_{pd}) - \lambda_2 (\mathbf{w}'\mathbf{u} - 1) \quad (16)$$

Following this same logic, entropy may be incorporated into the models presented by the equations (8) and (10), in accordance with the focus analysis. Another important question related to the incorporation of entropy in objective-functions, is related to the fact that the model does not permit short-selling by obvious mathematical limitations, it being necessary to include restriction $w_i \geq 0$.

2.5 Entropy optimization models applied to portfolio selections: a contribution

The model shown in (15) presents entropy inclusion as an objective-function of Markowitz's classic model, the entropic calculation of which refers only to the weight vector \mathbf{w} . The greatest problem associated with this type of formulation is its sensitivity to the magnitude of value ψ , since the more this parameter moves away from zero (remembering that $\psi \geq 0$), the greater the impact of the entropy on the objective-function. Since the definition of this parameter is subjective, its legitimacy may be questioned, since the distribution of portfolio weights will be directly affected by the decision makers' preferences and values.

Since revised literature on the subject still presents lacunae in the way that entropy can be incorporated into portfolio optimization problems, this article seeks to make its contribution by presenting two alternative methodological proposals for inclusion the entropy in the portfolio optimization. The first presents an entropic optimization model focused on weights vector, which is conditioned by a desired level of return, using the principle of the minimum relative entropy. The second deals with an entropic optimization model that conjugates the weights vector with the return vector for every asset analyzed, taking into account the maximum entropy principle.

2.5.1 Model of the minimal relative entropy applied to portfolio optimization

The relative entropy $R(Q, P^0)$, or the Kullback-Leibler divergence between two P^0 and Q distributions, is defined by the relationship

$$R(Q, P^0) = \sum_{i=1}^n Q(x_i) \ln Q(x_i) / P^0(x_i) \quad (17)$$

and measures the inefficiency of assuming that one random variable has a P^0 distribution, when its true distribution is Q , and that P^0 is an *a priori* distribution, for which the probability distribution is uniform. Thus, P^0 has maximum entropy, and Q is an *a posteriori* distribution. According to Rödder (2000), this Q distribution is obtained based on the addition of information in the system being analyzed, since Q is a distribution that is subject to $Q| = R$, in that R is the set of probabilistic restrictions, which differentiate the P^0 and Q distributions, or $R = \{B_i|A_i[x_i], i = 1, \dots, I\}$. Thus, the conditional distribution $Q\{Q(B_i|A_i) = x_i, i = 1, \dots, I\}$, may be calculated from P^0 and R , by means of the following optimization problem:

$$\text{Min}_x R(Q, P^0) = \sum_{i=1}^n Q(x_i) \ln Q(x_i)/P^0(x_i) \tag{18}$$

This formulation characterizes the principle of minimal relative entropy, which can be adapted for portfolio optimization problems. In this adaptation, an uniform distribution of the weights vector $w^0(P^0(w_i^0))$ is first made and a model is formulated with the objective of minimizing the relative entropy between this weights vector w^0 and the new weights vector $w^*(Q(w_i))$, which will result from the addition of restrictions to the problem, in the following way:

$$\begin{aligned} \min_w \quad & \sum_{i=1}^n Q(w_i) \ln Q(w_i)/P^0(w_i^0) \\ \text{s.t.} \quad & w'\bar{r} \geq \bar{r}_{pd} \\ & w'u = 1 \end{aligned} \tag{19}$$

that can be solved by Langrange with:

$$L(w, \lambda_1, \lambda_2) = \left[\sum_{i=1}^n Q(w_i) \ln Q(w_i)/P^0(w_i^0) \right] - \lambda_1 (w'\bar{r} - \bar{r}_{pd}) - \lambda_2 (w'u - 1) \tag{20}$$

Since this formulation does not operate with Neperian (Natural) logarithms, this type of problem does not accommodate short selling, making it necessary to include restriction $w_i \geq 0$.

2.5.2 Model of the maximum entropy applied to portfolio optimization

While model (19) deals with entropy associated only with portfolio weights, it is also possible to focus on entropy especially starting from the dispersion of random returns r_{it} . Taking as its base the idea of the model proposed by Philippatos & Wilson (1972), but following alternative methodological procedures, it is possible to extract the vector of weights w , based on its combination with the degree of disorder of the random returns r_{it} .

Jessop (1999) developed an entropic optimization model to resolve this type of question, when he sought solutions to problems of a multi-attribute evaluation, taking into account the dispersion of the performance vectors of the alternatives, based on the following entropy formulation of a random vector x :

$$H(X) = \ln \left(\sum_{i=1}^n x_i \right) - \left[\sum_{i=1}^n x_i \ln(x_i) / \sum_{i=1}^n x_i \right] \tag{21}$$

Adapting this formulation to portfolio optimization may take the following form:

$$\begin{aligned} \max_w H(R) &= \ln \left(\sum_{i=1}^n \sum_{j=1}^m w_j a_j (r_{it}) \right) \\ &- \left\{ \sum_{i=1}^n \left[\sum_{j=1}^m w_j a_j (r_{it}) \cdot \ln \sum_{j=1}^m w_j a_j (r_{it}) \right] \right\} / \sum_{i=1}^n \sum_{j=1}^m w_j a_j (r_{it}) \quad (22) \\ \text{s.t.:} \quad &\mathbf{w}'\mathbf{u} = 1 \end{aligned}$$

where $a_j (r_{it}) = r_{it} - r_{i \min} / r_{i \max} - r_{i \min}$ and refers to the normalization of random returns r_{it} . This normalization is a requirement for this modeling, since the returns can assume negative values, while the entropy operations require non-negative numbers. For this reason, this model is also applied only in cases where short-selling ($w_j \geq 0$) is not permitted. This problem of non-linear optimization was resolved by Lagrange in the following way:

$$\begin{aligned} L(w, \lambda_1, \lambda_2) &= \ln \left(\sum_{i=1}^n \sum_{j=1}^m w_j a_j (r_{it}) \right) \\ &- \left\{ \sum_{i=1}^n \left[\sum_{j=1}^m w_j a_j (r_{it}) \cdot \ln \sum_{j=1}^m w_j a_j (r_{it}) \right] \right\} / \sum_{i=1}^n \sum_{j=1}^m w_j a_j (r_{it}) \quad (23) \\ &- \lambda_1 (\mathbf{w}'\mathbf{u} - 1) \end{aligned}$$

3 AN EMPIRICAL ANALYSIS

3.1 Process of sampling and selection from the period of analysis

An empirical analysis was constructed based on the returns of a sampling of assets that are negotiated on the São Paulo Stock Exchange (BOVESPA), by taking into account that the classic Markowitz model was proposed as a means to optimize only risky assets portfolios.

This sampling of assets was collected from among the IBOVESPA shares, which is the index most commonly used as a Brazilian stock market reference. On 30th March 2010, the theoretical portfolio of IBOVESPA consisted of 63 assets. It was decided to take a sampling of fourteen assets, which represented a sampling of 22.0% of the 63 assets that composed the index. In the sampling process, the shares were selected based on a uniform distribution random number generator. After the random selection of each asset, a collateral analysis procedure was carried out to check and see if the same asset had been negotiated on all of the price collection points during the period of analysis. If the asset did not meet this condition, then it was replaced by another randomly chosen asset that was likely to meet this requirement.

This study was carried out over the period between January 1999 and December 2009, and included a total of 132 observations for each asset. In order to ensure that this research work was operable, the research period was divided into two periods, as may be seen in Figure 1.

A period of seven years – from January 1999 to December 2006 – was selected to form the base period, in order that the covariance matrices could capture share market behaviour during its

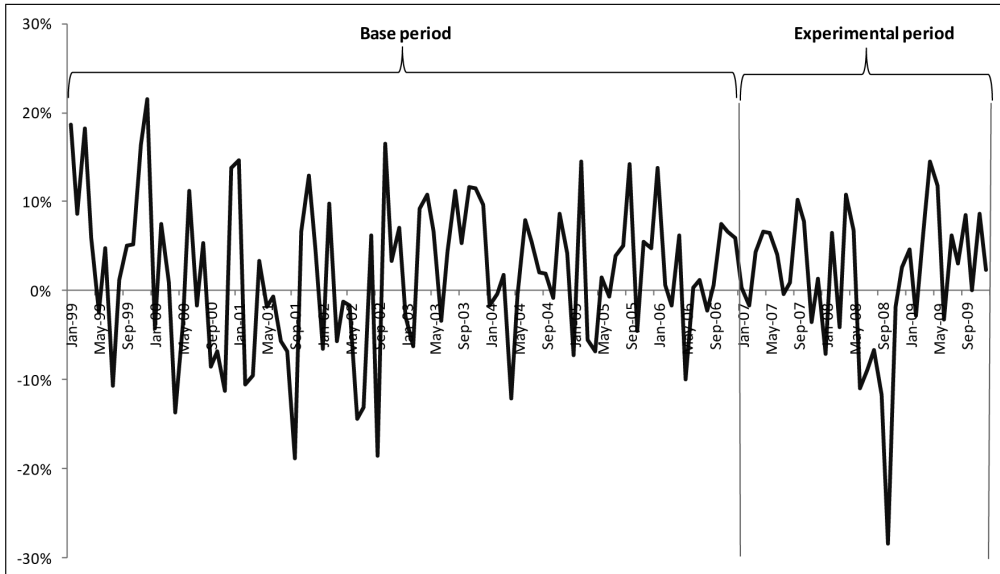


Figure 1 – Nominal Monthly Variation of the IBOVESPA during the period between January 1999 and December 2009. Source: Adapted from BMFBOVESPA (2010).

different phases, notably the *Bull* market, *Bear* market and *Flat* market phases, with their corresponding periods of *Rally*, *Consolidation* and *Correction*. In order to form the monthly portfolios, the experimental period totaled a period of three years, from January 2007 to December 2009, based on the models presented in this study.

In general terms, during this whole period of ten years, there was a huge rise in the stock market nominal value of IBOVESPA listed companies, as can be seen in Table 1. The IBOVESPA (IBVSP) reached a level of 522.2% of the nominal returns, indicating an average monthly nominal return (as per equation (1)) of 1.4%, with a standard deviation of 8.4%. Of the randomly selected sampling of fourteen bonds, there were assets that accumulated a nominal return of 2,569.42% (CSNA3), while other assets accumulated negative returns, as was the case of TCSL4 (-18.42%).

In order to identify the explicative power of the sampling, we considered a hypothetical situation whereby, on the final day of December 1998, a portfolio (P_u) was formed based on the uniform distribution of weight between the fourteen assets selected. This portfolio would have obtained a nominal accumulated return of more than 350.0%. In terms of risk, this hypothetical portfolio (P_u), would present a standard deviation (taking into account the (5) equation for the final period) almost 0.9% lower than the IBOVESPA portfolio.

When considering the segregation of these periods, it was seen that hypothetical portfolio P_u would exceed the IBOVESPA portfolio by more than 340.0% in the base period; while in the subsequent period (experimental phase), the value of hypothetical portfolio P_u would be exceeded by IBOVESPA in a little more than 12.0% of the cases. With regards to risk, in both periods, hypothetical portfolio P_u , presented a lower risk when compared to IBOVESPA.

Since the data in Table 1 shows a situation where a portfolio of maximum P_u diversification and the IBOVESPA index present transitory relationships of risk and returns, it is understood that the empirical analysis had found an appropriate experimental base upon which to carry out a comparative analysis of the portfolio optimization models studied in this article.

Table 1 – Cumulative and average returns and risk during the period between January 1999 and December 2009.

Period	IBVSP	P_u	VALE5	PETR4	CSNA3	CMIG4	ITSA4	EMBR3
Jan99-Dec09	522.2%	875.3%	1889.0%	1215.9%	2569.4%	318.8%	1834.2%	158.4%
Mean Return	1.4%	1.7%	2.3%	2.0%	2.5%	1.1%	2.3%	0.7%
Standard Deviation	8.4%	7.5%	10.8%	10.7%	13.2%	10.3%	9.5%	15.3%
Jan99-Dec06	358.8%	692.2%	1327.1%	1022.7%	1171.3%	231.6%	1336.9%	683.0%
Mean Return	1.6%	2.2%	2.8%	2.6%	2.7%	1.3%	2.8%	2.2%
Standard Deviation	8.5%	8.0%	11.1%	10.0%	13.3%	11.2%	9.5%	16.1%
Jan07-Dec09	35.6%	23.1%	39.4%	17.2%	110.0%	26.3%	34.6%	-67.0%
Mean Return	0.8%	0.6%	0.9%	0.4%	2.1%	0.7%	0.8%	-3.0%
Standard Deviation	8.2%	5.9%	9.7%	12.2%	13.1%	7.7%	9.4%	12.3%
Period	CPLE6	CRUZ3	TCSL4	ELET3	TNLP3	SBSP3	LAME4	TLPP4
Jan99-Dec09	126.6%	1163.4%	-18.4%	13.4%	231.7%	85.5%	1880.8%	145.7%
Mean Return	0.6%	1.9%	-0.2%	0.1%	0.9%	0.5%	2.3%	0.7%
Standard Deviation	10.8%	9.1%	14.3%	12.9%	12.0%	12.2%	17.5%	9.7%
Jan99-Dec06	49.7%	617.4%	44.6%	-16.0%	252.5%	109.7%	2055.4%	151.2%
Mean Return	0.4%	2.1%	0.4%	-0.2%	1.3%	0.8%	3.3%	1.0%
Standard Deviation	11.7%	9.9%	14.9%	14.3%	13.0%	13.1%	18.7%	10.8%
Jan07-Dec09	51.4%	76.1%	-43.6%	34.9%	-5.9%	-11.6%	-8.1%	-2.2%
Mean Return	1.2%	1.6%	-1.6%	0.8%	-0.2%	-0.3%	-0.2%	-0.1%
Standard Deviation	7.9%	6.6%	12.6%	8.3%	8.9%	9.5%	13.6%	5.4%

Source: Adapted from the BMFBOVESPA (2010).

3.2 Analysis for Technical consideration

In order to construct an empirical analysis, four optimization models were implemented:

- The Sharpe Model of optimization: was implemented in accordance with equation (12), so as to produce its portfolio return \bar{r}_p , related to the level of portfolio return \bar{r}_{pd} included in the restrictions of the other models. This procedure was adopted as a way to exogenously and objectively model the attitude of a standard-investor when faced with risk;
- The classic Markowitz optimization model: was put into operation in accordance with equation (6), with the objective of providing a portfolio that would combine risk minimization that was subject to the desired performance level \bar{r}_{pd} ;
- Minimum relative entropy optimization model: this was implemented in accordance with equation (19), with the aim of presenting a portfolio resulting from the minimization of

the difference in the levels of entropy between the distribution of uniform weight and a new distribution, in that the latter would be subject to the desired level of return \bar{r}_{pd} ;

- d) Maximum entropy optimization model: was put into operation in accordance with equation (22), with the objective of providing a weights vector that would combine the maximum entropy in conjunction with the weights vectors and the random returns of the assets analyzed.

All the models were submitted to the unit restrictions of the total sum of the weights vectors and non-negativity of weights vectors, being that the latter characteristic means that short-selling is not allowed. In addition to these questions, the following should also be considered:

- All the models used operate with static programming. Although there are dynamic programming models that can formulate projections for multiple periods, it was decided to maintain the conditions of Markowitz's classic methodology, which means that all the portfolios were recalculated and rebalanced at the beginning of each period. The portfolios were created at the end of each month and projected for the end of the following month. For example, the initial projections for the portfolios occurred at the end of December 2006 (D_0) and were relative to the following month of January (D_1);
- Following this system of monthly rebalancing, the covariance matrices were recalculated in each of the months of the experimental period, always using as their base the month of January 1999 and incorporating the month immediately prior to each new month projected. For example, the first portfolio projection was based on the covariance matrix calculated for the period between January 1999 and December 2006. However the second projection considered the covariance matrix calculated for the period between January 1999 and January 2007. Thus, a procedure was adopted whereby the informational base of the covariance matrices was growth over a period of time, but with a January 1999 fixed base. It was understood that this procedure made it possible for the models to incorporate more information so as to determine projections, in comparison with the situation where the size of the matrix base is constantly maintained, which occurs if the covariance base of the matrices is mobile;
- Thus, the portfolio weights were rebalanced every month based on what the models recommended, which meant that every month new information was included relating to the risk distribution involved, depending on how the covariance matrices database expanded, as mentioned previously;
- Transaction costs relating to rebalancing were not considered.

3.3 An analysis of the results of the models implemented

In the comparative analysis carried out on the models that were used, the following calculation procedures were considered:

- a) Portfolio nominal monthly return indexes ($r_p = \sum_{i=1}^{14} w_i r_{it}$) and accumulated return indexes $\left[r_{ap} = \prod_{t=0}^{35} (1 + r_{pt}) \right]$, formed the basis of this analysis;
- b) The Sharpe Index: this was used to measure the excess return of portfolios calculated in comparison to their risk levels. This index showed their relationship to the market, when taking into account the excess return of the portfolio over the risk-free asset. This index was calculated using the $\theta g = g(r_p) - r_f / \sigma_p$ formula, which should not be confused with the Sharpe optimization process for the \bar{r}_{pd} calculation (see equation (12)). As a proxy for the risk-free return rate r_f , the SELIC (a proxy of rate of return for Brazilian Treasury Bills) monthly rate was adopted for the date in question. The Sharpe index was used in the *a priori* analysis, so as to measure the predictive efficiency of the models within the ambit of the risk and return relationship, and in the *a posteriori* analysis, to measure the effective performance of the portfolios. For this second function, the formula was adapted to

$$\theta_{ap} = \left(1/T \cdot \sum_{t=1}^T (r_{pt} - r_{ft}) \right) / \sigma_{(r_{pt} - r_{ft})};$$

- c) Alpha and Beta parameters: these were obtained from an analysis made of the simple linear regression between the effective portfolio returns (r_{pt}) and the IBOVESPA returns (r_{mt}):

$$r_{pt} = \alpha + \beta r_{mt} + \varepsilon_t \quad (24)$$

where ε_t is the random error term. The purpose of an estimation of these parameters is to analyze the performance of the funds in comparison with levels of market profitability;

- d) Index of the degree of portfolio diversification: this was applied based on the Goetzmann & Kumar proposal (2001):

$$D_t = \sum_{i=1}^N (w_i - w_u)^2 \quad (25)$$

and was calculated for each t period, where w_u was the weight of a fully diversified market portfolio, that is to say: with a ($w_u = 1/N_u$) uniform weight distribution. The lower the D_t value, the higher the level of portfolio diversification for the period analyzed.

The optimization procedures adopted produced weights vectors for every one of the projected periods, applied in the following portfolios compositions:

- p_1 : the portfolio composed according to the classic Markowitz Model;
 p_2 : the portfolio constituted according to the relative minimum entropy model; and
 p_3 : the portfolio formed according to the maximum entropy model.

The optimization procedures were implemented using the Microsoft ExcelTM SolverTM which, according to Kwan (2001), has efficient algorithms to solve quadratic and nonlinear programming problems.

Since tabulating the results generated very extensive tables, it was decided to present a reduced graph of the results of the last quarter processed, as can be seen in Table 2. In this table, it is possible to visualize the weights calculated for the fourteen assets used in this sampling, the value of the desired return on the portfolio (r_{pd}), that derives from the Sharpe model (12) optimization process, the return on the proposed portfolio ($E(r_p)$), the risk value as a variance (σ_p^2) and standard deviation (σ_p) of the portfolio and nominal returns obtained.

Table 2 – Reduced graph of the applied optimization models.

	Markowitz Model (p_1)			Model of Entropy 1 (p_2)			Model of Entropy 2 (p_3)		
D_0	Sep/09	Oct/09	Nov/09	Sep/09	Oct/09	Nov/09	Sep/09	Oct/09	Nov/09
D_1	Oct/09	Nov/09	Dec/09	Oct/09	Nov/09	Dec/09	Oct/09	Nov/09	Dec/09
w_{vale5}	0.1555	0.1716	0.1788	0.6198	0.6092	0.5881	0.1140	0.1137	0.1137
w_{petr4}	0.0745	0.0778	0.0889	0.0602	0.0594	0.0610	0.0599	0.0599	0.0599
w_{csna3}	0.1193	0.1277	0.1146	0.0870	0.0840	0.0814	0.0648	0.0647	0.0648
w_{cmig4}	0.0000	0.0000	0.0000	0.0141	0.0210	0.0247	0.0659	0.0658	0.0658
w_{itsa4}	0.2974	0.2736	0.2839	0.0727	0.0676	0.0690	0.0582	0.0584	0.0583
w_{embr3}	0.0000	0.0000	0.0000	0.0044	0.0077	0.0091	0.0656	0.0657	0.0658
w_{cpfle6}	0.0000	0.0000	0.0000	0.0007	0.0002	0.0059	0.0582	0.0582	0.0582
w_{cruz3}	0.3494	0.3465	0.3275	0.0630	0.0617	0.0595	0.0838	0.0838	0.0841
w_{tcs14}	0.0000	0.0000	0.0000	0.0007	0.0002	0.0008	0.0741	0.0742	0.0741
w_{elet3}	0.0000	0.0000	0.0000	0.0007	0.0002	0.0008	0.0612	0.0613	0.0612
w_{tmlp3}	0.0000	0.0000	0.0000	0.0072	0.0150	0.0189	0.1011	0.1010	0.1009
w_{sbsp3}	0.0000	0.0000	0.0000	0.0007	0.0002	0.0008	0.0554	0.0554	0.0555
w_{lame4}	0.0000	0.0000	0.0000	0.0681	0.0650	0.0694	0.0757	0.0757	0.0756
w_{tlpp4}	0.0040	0.0028	0.0063	0.0007	0.0088	0.0104	0.0622	0.0621	0.0622
r_{pd}	0.0215	0.0219	0.0218	0.0215	0.0219	0.0218			
$E(r_p)$	0.0215	0.0219	0.0218	0.0215	0.0219	0.0218	0.0128	0.0126	0.0130
σ_p^2	0.0054	0.0053	0.0053	0.0077	0.0076	0.0074	0.0058	0.0058	0.0057
σ_p	0.0733	0.0730	0.0729	0.0879	0.0872	0.0859	0.0760	0.0758	0.0756
r_p	0.0015	0.0419	-0.0100	0.0528	0.0732	0.0000	-0.0112	0.0708	0.0413
rap	1.3626	1.4197	1.4054	1.2551	1.3470	1.3470	1.1178	1.1969	1.2464

Source: Elaborated by the author.

3.3.1 An analysis of the nominal monthly and accumulated returns

The monthly nominal and accumulated returns on the portfolios proposed by models p_1 , p_2 and p_3 are presented in Tables 3 and 4.

During this experimental period, the portfolio proposed by the classic Markowitz model presented the highest nominal accumulated return, of nearly 40.54%, followed by the relative minimum entropy model (34.70%) and the maximum entropy model (24.64%).

Table 3 – Estimated monthly nominal returns of the portfolios.

Month	Jan/07	Feb/07	Mar/07	Apr/07	May/07	Jun/07	Jul/07	Aug/07	Sep/07	Oct/07	Nov/07	Dec/07
r_{p1}	5.4%	-0.5%	5.4%	5.5%	6.4%	0.6%	1.9%	0.3%	15.0%	6.6%	-1.5%	0.9%
r_{p2}	6.7%	2.0%	4.8%	6.3%	5.6%	0.9%	4.3%	1.6%	17.4%	5.5%	-4.7%	-1.2%
r_{p3}	1.6%	-1.2%	4.3%	5.5%	6.1%	4.5%	-2.7%	2.3%	6.2%	5.0%	-5.6%	-1.8%
Month	Jan/08	Feb/08	Mar/08	Apr/08	May/08	Jun/08	Jul/08	Aug/08	Sep/08	Oct/08	Nov/08	Dec/08
r_{p1}	-8.4%	7.1%	-3.4%	10.6%	7.2%	-10.9%	-12.9%	-5.9%	-8.6%	-26.5%	5.8%	-1.4%
r_{p2}	-9.6%	9.0%	-1.9%	5.7%	3.7%	-13.0%	-12.1%	-6.8%	-13.3%	-24.9%	-2.2%	-0.8%
r_{p3}	-4.1%	6.1%	-4.9%	3.2%	4.7%	-9.9%	-6.0%	-4.5%	-6.3%	-18.8%	2.2%	-1.3%
Month	Jan/09	Feb/09	Mar/09	Apr/09	May/09	Jun/09	Jul/09	Aug/09	Sep/09	Oct/09	Nov/09	Dec/09
r_{p1}	4.3%	-2.7%	5.0%	12.1%	9.4%	-1.6%	9.4%	0.1%	8.1%	0.2%	4.2%	-1.0%
r_{p2}	13.5%	-4.2%	3.2%	14.7%	7.8%	-6.7%	8.3%	1.6%	9.7%	5.3%	7.3%	0.0%
r_{p3}	2.7%	-2.6%	5.3%	13.4%	5.9%	-5.7%	6.7%	2.0%	6.3%	-1.1%	7.1%	4.1%

Source: Elaborated by the author.

Table 4 – Nominal accumulated returns of the estimated portfolios.

Month	Jan/07	Feb/07	Mar/07	Apr/07	May/07	Jun/07	Jul/07	Aug/07	Sep/07	Oct/07	Nov/07	Dec/07
ra_{p1}	1.0544	1.0495	1.1060	1.1664	1.2406	1.2480	1.2712	1.2751	1.4664	1.5637	1.5410	1.5542
ra_{p2}	1.0667	1.084	1.1409	1.2123	1.2804	1.2921	1.3480	1.3702	1.6084	1.6975	1.6176	1.5978
ra_{p3}	1.0165	1.0044	1.0480	1.1053	1.1728	1.2253	1.1922	1.2200	1.2951	1.3602	1.2844	1.2607
Month	Jan/08	Feb/08	Mar/08	Apr/08	May/08	Jun/08	Jul/08	Aug/08	Sep/08	Oct/08	Nov/08	Dec/08
ra_{p1}	1.4231	1.5241	1.4728	1.6283	1.7461	1.5556	1.3553	1.2750	1.1658	0.8565	0.9066	0.8938
ra_{p2}	1.4443	1.5750	1.5456	1.6336	1.6946	1.4747	1.2963	1.2086	1.0483	0.7876	0.7701	0.7641
ra_{p3}	1.2093	1.2830	1.2204	1.2601	1.3199	1.1890	1.1180	1.0677	1.0006	0.8120	0.8297	0.8186
Month	Jan/09	Feb/09	Mar/09	Apr/09	May/09	Jun/09	Jul/09	Aug/09	Sep/09	Oct/09	Nov/09	Dec/09
ra_{p1}	0.9324	0.9069	0.9526	1.0683	1.1684	1.1498	1.2578	1.2586	1.3605	1.3626	1.4197	1.4054
ra_{p2}	0.8669	0.8302	0.8570	0.9831	1.0598	0.9888	1.0704	1.0871	1.1922	1.2551	1.3470	1.3470
ra_{p3}	0.8405	0.8190	0.8625	0.9785	1.0363	0.9771	1.0426	1.0631	1.1304	1.1178	1.1969	1.2464

Source: Elaborated by the author.

3.3.2 An analysis of the relationship between risk and return according to the Sharpe Index

The use of the Sharpe Index *a priori*, as seen in Figure 2, shows that the classic Markowitz model (θ_1) had the greatest predictive efficiency when compared to the minimum relative entropy (θ_2) and maximum entropy (θ_3) models.

The gap between the Markowitz model and the entropy-based models were practically constant during the period analyzed, irrespective of market phases.

In the analysis of the efficiency of the performance of the *a posteriori* portfolios (see Table 5), the classic Markowitz model presented the best risk-adjusted excess return relationship. In addition, while the relative minimum entropy model also presented a good relationship of risk and return,

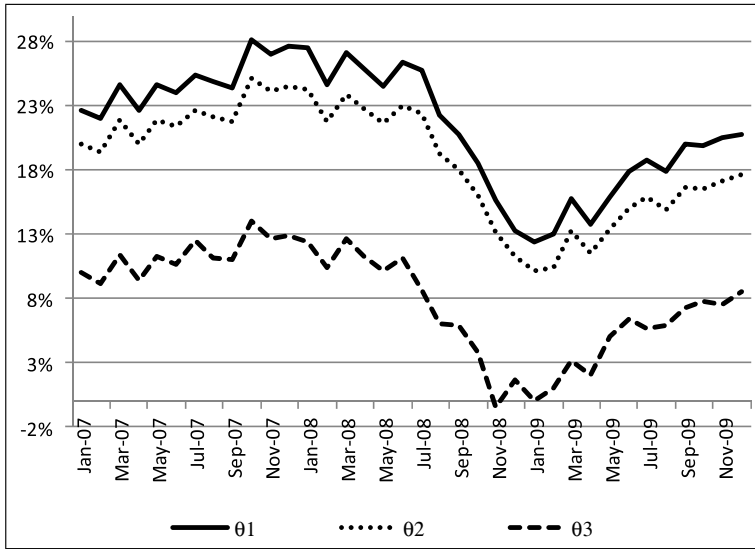


Figure 2 – The *a priori* Sharpe performance indexes. Source: Elaborated by the author.

Table 5 – The *a posteriori* Sharpe performance indexes.

	p_1	p_2	p_3
Mean ($r_p - r_f$)	0.0004	-0.0008	-0.0030
$\sigma_{r_p - r_f}$	0.0794	0.0861	0.0609
Θ_{ap}	0.0046	-0.0097	-0.0487
	p_1	p_2	p_3
Mean ($r_p - r_f$)	0.0038	0.0031	-0.0010
$\sigma_{r_p - r_f}$	0.0794	0.0861	0.0609
Θ_{ap}	0.0475	0.0358	-0.0169

Source: Elaborated by the author.

the maximum entropy model presented a negative performance, since its average return was lower than the average return of the risk-free asset.

3.3.3 An analysis of the risk and return relationship according to Alpha and Beta parameters

The results of an estimation of the parameters of regression between the nominal returns of the calculated portfolios and the market index returns are shown in Table 6.

The Markowitz model presented the best Alpha coefficient (α), showing that the portfolio had a positive average monthly yield of 0.17%, irrespective of market movement. With regard to this question, the relative minimum entropy model and the maximum entropy model had Alpha

Table 6 – Estimated parameters and regression analysis statistics.

	p_1	p_2	p_3
α	0.0017	0.0004	-0.0005
β	0.9214	0.9710	0.7057
t -statistic	16.9868	13.6186	17.0688
r^2	0.8946	0.8451	0.8955

Source: Elaborated by the author.

coefficients of 0.04% and -0.05% respectively; in the case of the maximum entropy model, the portfolio presented a monthly average loss of 0.05% irrespective of the market.

In terms of the Beta coefficient (β), the classic Markowitz and relative minimum entropy models presented risk levels that were very close to the market risks, the parameters of which were estimated with a high statistical significance. In these circumstances, it is envisaged that for each 1% variance in the market index returns, there will be a variance of 0.9214% in the returns for the portfolios composed according to the Markowitz model and nearly 0.9710% in returns for the portfolios composed according to the relative minimum entropy model. However, the maximum entropy model presented a moderate level of market risk, the returns of which followed a 0.7057% movement of 1.0% in the market index returns.

Some authors stated that the coefficient of determination (r^2) can be considered as a measure of the diversification of the portfolio, since it measures to what degree the return variance of a portfolio is explained by the variability of the market index returns. If this is effectively taken into account, all the proposed portfolios in this study would have had a high level of diversification, since over 80.0% of their variabilities followed market movements.

However, the coefficient of determination may be questioned as a measure of diversification, since the market indices are composed of a very small number of companies in comparison with the stock market as a whole and by the fact that, in situations of crisis, there is a greater tendency for the movement of the majority of assets to follow the market, which could justify the high coefficients obtained during the period analyzed.

3.3.4 An analysis of the degree of portfolio diversification

The methodology used to measure the level of portfolio diversification as proposed by Goetzmann & Kumar (2001), the results of which may be seen in Table 7 and Figure 3, show that the maximum entropy model presented the greatest level of diversification, with an average index of 0.0042; that is to say, very close to the maximum level of diversification.

This result had been expected, since the formulation of the model pointed towards this objective. We were surprised, however, by the results obtained by the relative minimum entropy, since these presented a level of diversification that was nearly twice as high as that of Markowitz's classic model.

Table 7 – Average indices of portfolio diversification.

D	p_1	p_2	p_3
Mean	0.1636	0.3121	0.0042
σ	0.0209	0.0532	0.0003

Source: Elaborated by the author.

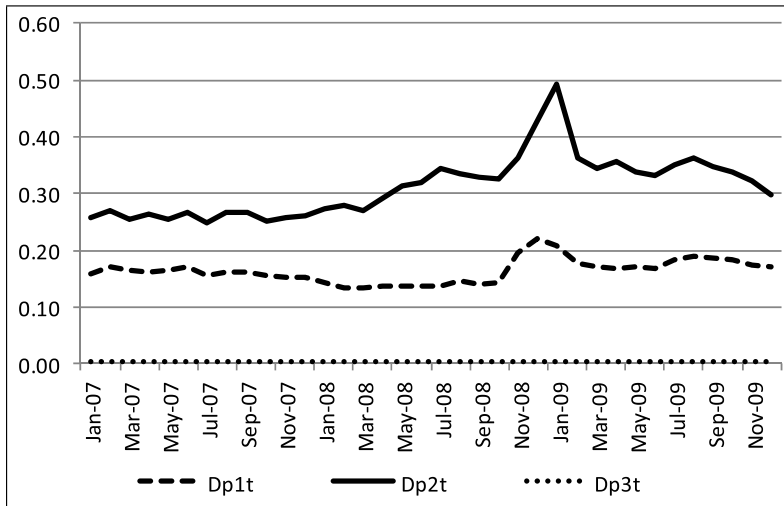


Figure 3 – Monthly indices for portfolio diversification. Source: Elaborated by the author.

An explanation for this situation is found within the ambit of restrictions to which the entropic optimization models were submitted. While the maximum entropy model was only conditioned to the total weight vector unit and by the non-negativity of weights, the minimum relative entropy was, additionally, required to present a required level of desired return.

4 FINAL CONSIDERATIONS AND RECOMMENDATIONS

Even though more than fifty years have elapsed since the creation of the Modern Portfolio Theory, the fundamental characteristics of the classic Markowitz model can still be used to test the world’s new economic configurations and produce good results.

When comparing the Markowitz model with two models that were constructed to represent new risk configurations based on entropy optimization, the present study concluded that the first model was far superior to the others. Not only did the Markowitz model present better accumulated nominal yields, it also presented a far greater predictive efficiency and better effective performance, when considering the *trade-off* between risk and return.

However, with regards to diversification, the original concerns in relation to the Markowitz model were confirmed. The Markowitz model concentrated its weights in only five of the fourteen sample assets. What caused surprise in the comparative analysis, was the fact that the relative

minimum entropy model presented an even lower degree of diversification than the Markowitz model. For instance, during one month in particular, this model managed to concentrate nearly 74.0% of its weights in only one asset. This unexpected behaviour in the entropic model can be explained by the restrictions imposed by the desired performance that is established in its formulation. For this reason, the model needed to respect this condition, thereby sacrificing its objective function performance.

Contrary to these two models, the maximum entropy model showed a level of diversification that was very close to the maximum level, which would be a situation that is far more in keeping with Markowitz's diversification precepts. However, these models showed the worst results in the comparative analysis of performance.

It is important to underline that the results of these studies need to be interpreted in the light of the temporal context in which they are based and on the limitations of the IBOVESPA as an index representing the Brazilian stock market.

Further studies may be developed to find ways to study other periods to analyze, other markets, other market indices and to include other types of financial assets. In addition, new studies could consider the question of rebalancing portfolios over longer (annual) and shorter periods. In the latter case, the effects of intraday trading can also be studied, on condition that these took into account transaction costs. Other research studies could also compare the models used in this study with *downside* risk models and of multiple periods, these last to be based on dynamic programming.

REFERENCES

- [1] BAWA V. 1982. Stochastic Dominance: A Research Bibliography. *Management Science*, **28**(6): 698–712.
- [2] BERA AK & PARK SY. 2008. Optimal Portfolio Diversification Using the Maximum Entropy Principle. *Econometric Reviews*, **27**(4-6): 484–512.
- [3] BMFBOVESPA – BOLSA DE MERCADORIAS & FUTUROS E BOLSA DE VALORES DE SÃO PAULO. 2010. Cotações históricas. Disponível em: <http://www.bmfbovespa.com.br/shared/iframe.aspx?idioma=pt-br&url=http://www.bmfbovespa.com.br/pt-br/cotacoes-historicas/FormSeriesHistoricas.asp>.
- [4] CASSETTARI A. 2003. O Princípio da Máxima Entropia e a Teoria das Carteiras. *Revista Brasileira de Finanças*, **1**(2): 271–300.
- [5] GOETZMANN WN & KUMAR A. 2001. Equity Portfolio Diversification. *NBER Working Paper 8696*, National Bureau of Economic Research, Cambridge. Disponível em: <http://web.econ.unito.it/nicodano/w8686.pdf>.
- [6] HUA L & XINGSI L. 2003. A New Portfolio Model and Application. *Operations Research and Management Science*, **6**: 83–86.
- [7] JESSOP A. 1999. Entropy in Multiattribute Problems. *Journal of Multi-Criteria Decision Analysis*, **8**(2): 61–70.

- [8] KWAN CCY. 2001. Portfolio Analysis Using Spreadsheet Tools. *Journal of Applied Finance*, **11**: 70–81.
- [9] MARKOWITZ HM. 1952. Portfolio Selection. *The Journal of Finance*, **7**(1): 77–91.
- [10] MARKOWITZ HM. 1959. *Portfolio Selection, Efficient Diversification of Investments*. New Jersey: John Wiley & Sons.
- [11] MARKOWITZ HM. 1987. *Mean-Variance analysis and portfolio choice and capital market*. New York: John Wiley & Sons.
- [12] OGRYCZAK W & RUSZCZYNSKI A. 1999. From stochastic dominance to mean-risk models: Semideviations as risk measures. *European Journal of Operational Research*, **116**(1): 33–50.
- [13] PHILIPPATOS GC & WILSON CJ. 1972. Entropy, market risk, and the selection of efficient portfolios. *Applied Economics*, **4**: 209–220.
- [14] PHILIPPATOS GC & WILSON CJ. 1974. Entropy, market risk, and the selection of efficient portfolios: Reply. *Applied Economics*, **6**: 77–81.
- [15] RÖDDER W. 2000. Conditional logic and the Principle of Entropy. *Artificial Intelligence*, **117**: 83–106.
- [16] RUBINSTEIN M. 2002. Markowitz’s “Portfolio Selection: A Fifty-Year Retrospective”. *The Journal of Finance*, **57**(3): 1041–1045.
- [17] SHARPE WF. 1963. A simplified model for portfolio analysis. *Management Science*, **9**(2): 277–293.
- [18] SHARPE WF. 1964. Capital Asset Prices: A theory of Market Equilibrium under Conditions of Risk. *The Journal of Finance*, **19**(3): 425–442.
- [19] SHARPE WF. 1966. Mutual Fund Performance. *The Journal of Business*, **39**(1), Part 2: Supplement on Security Prices, 119–138.
- [20] SHANNON CE. 1948. A Mathematical Theory of Communication. *The Bell System Technical Journal*, **27**: 379–423.
- [21] STEINBACH MC. 2001. Markowitz Revisited: Mean-Variance Models in Financial Portfolio Analysis. *Society for Industrial and Applied Mathematics*, **43**(1): 31–85.
- [22] WHITE CJ. 1974. Entropy, market risk, and the selection of efficient portfolios: Reply. *Applied Economics*, **6**: 73–75.