



Communication

[Comunicação]

Development of tetra-primer ARMS-PCR protocol to genotype the prolactin receptor SNP 39136666 and assessment of this SNP in Brazilian locally adapted cattle breeds

[Desenvolvimento de protocolo de tetra-primer ARMS-PCR para genotipagem do SNP 39136666 do receptor da prolactina e avaliação desse SNP em raças bovinas brasileiras localmente adaptadas]

D.R.L.R. Faza¹, H.P. Pereira², A.A. Egito³, R.A.A. Torres Júnior³, E.S. Kim⁴,
T.S. Sonstegard⁴, M.F. Martins¹, J.C.C. Panetto¹,
M.V.G.B. Silva¹, M.A. Machado^{1*}

¹Centro de Pesquisa de Pecuária de Leite da Embrapa - Juiz de Fora, MG

²Universidade Federal de Juiz de Fora - Juiz de Fora, MG

³Centro de Pesquisa de Pecuária da Embrapa - Campo Grande, MS

⁴Recombinetics - Saint Paul, United States

Cattle herds are highly influenced by environmental conditions and production and reproduction losses caused by high temperatures and humidity have been reported (Landaeta-Hernandez *et al.*, 2011, Osei-Amponsah *et al.*, 2019). Cattle breeds originated from India (*Bos primigenius indicus*) are less productive when compared to European breeds under favorable conditions. However, indicine breeds are more resilient and remain productive under unfavorable conditions such as parasitosis, disease and heat stress (Guis *et al.*, 2012; Lemos *et al.*, 2018). Most taurine breeds are adapted to temperate weather and commonly have long, thick and curly hair, subcutaneous fat layers and elongated digestive tract in which rumination generates heat (Martinez *et al.*, 2012; Anderson *et al.*, 2015).

In contrast, indicine breeds have short hair, large skin folds, increased heat flow from the body to the skin and reduced metabolic rate (Turner & Schleger, 1960). Nevertheless, a small number of taurine breeds (e.g. *Senepol*) present high heat tolerance due to their short, straight, smooth and lower follicle density hair which is called “slick hair” phenotype (Olson *et al.*, 2003). Taurine animals showing this phenotype are able to control the body temperature under conditions of

thermal stress and therefore were able to maintain normal productivity.

Olson *et al.* (2003) identified a genomic region of dominant inheritance that was able to provide thermal tolerance in *Senepol* and *Carora* breeds and their crosses. From these findings, scientific investigations were initiated to unravel the molecular mechanisms involved in this trait. Through the use of microsatellite markers, the slick hair locus was located on bovine chromosome 20, positionally located between markers DIK4835 and DIK2930 (Mariasegaram *et al.*, 2007). Additional genomic wide association study (GWAS) identified two sequence polymorphisms at this locus in *Senepol* breed and their crosses. One mutation was located in the prolactin gene (*PRL*) and the other one in its receptor (*PRLR*) and both showed impact on thermoregulation and hair morphology (Huson *et al.*, 2014; Littlejohn *et al.*, 2014).

The mutation located in the *PRPL* gene (p.Leu462*) is a deletion that introduces a premature stop codon in the RNA sequence, resulting in the loss of 120 C-terminal amino acids from the long isoform receptor (ss1067289408; chr20:39136558GC>G). Porto-Neto *et al.* (2018) found that p.Leu462* mutation, described by Littlejohn

Recebido em 1 de julho de 2020

Aceito em 13 de janeiro de 2021

*Autor para correspondência (*corresponding author*)

E-mail: marco.machado@embrapa.br

et al. (2014), did not explain all slick hair phenotypes found in creole races in Latin America. Analyzing *Limonero* genome sequences, these authors identified new mutations in *PRLR* exon 11 which also encode smaller prolactin receptor isoforms. The newly described mutations were P.S465 * found in the *Limonero* breed, and p.R497 * found in the *Limonero* and *Carora* breeds, but not found in *Senepol*. These two new mutations combined explain almost 90% of the slick hair phenotypes in animals that do not carry the mutation found in *Senepol*. The mutation p.R497 * is caused by a single nucleotide polymorphism (SNP), in which the nucleotide C is replaced by T at position 39136666 in the prolactin gene (*PRLR*) of bovine chromosome 20, generating a stop codon in the RNA sequence (Porto-Neto *et al.*, 2018).

SNPs are the current most abundant and used molecular markers in plants and animals although genotyping large numbers of animals by methods involving genotyping by sequencing (GBS) or SNPs microarrays chips remains expensive in developing countries (Ahlawat *et al.*, 2014). Alternatively, the tetra-primer ARMS-PCR is a simple and cost-effective SNP genotyping methodology which involves a single multiplex PCR using outer and inner sets of primers. The outer primers amplify a larger fragment of the target gene, regardless of their SNP genotype, and each inner primer combines with one of the outer primers to generate allele-specific fragments that can be easily visualized through gel electrophoresis, differentiating homozygotes and heterozygotes (Li *et al.*, 2014).

The objective of this work was to develop a simple and low-cost genotyping method for genotyping the SNP 39136666 located in the *PRLR* gene, which is associated to the slick hair phenotype, using the tetra-primer ARMS-PCR technique and to verify the allelic and genotypic frequencies of this SNP in four locally adapted Iberian derived Brazilian cattle breeds. DNA samples were extracted using biological samples from commercial herds provided by cattle producers of *Caracu* (beef), *Caracu Caldeano* (dairy), *Crioulo Lageano*, *Mocho Nacional* and *Pantaneiro*. We used Next Generation Sequencing (NGS) Illumina HiSeq 2500 v4 to sequence the genome of 10 animals of the *Caracu* breed, which is a locally adapted double purpose

Brazilian breed. Genotypes of SNP 39136666 were obtained from the sequences generated for each sample and used as control to validate the results of the tetra-primer ARMS-PCR procedure. The genotypes found in these sequenced samples were: CC (n = 1), CT (n = 3) and TT (n = 6).

Genome sequences adjacent to SNP 39136666 were used to explore the primer sequences required by the tetra-primer ARMS-PCR technique by means of the Web Tool Primer 1 (Collins & Ke, 2012). The following primers set was selected: forward inner primer (C allele) 5'-AAGCCTGACCAAGACACGGTGTGGCAAC-3', reverse inner primer (T allele) 5'-AGATCAAGGGGGTTTTGTCTTGGGGGCA-3', forward outer primer 5'-ACCACAGCCACTTCGCTGGACCAAACAG-3' and reverse outer primer 5'-CAGGATGTTGCTATCTGTACCCGGGA-3'.

In order to establish the most efficient PCR condition, different concentrations of primer, MgCl₂, primer annealing temperatures and the use of the touch down PCR cycling profile were tested. DNA amplification products were detected using 8% native, 0.8 mm thick, 19:1 polyacrylamide gel electrophoresis followed by silver nitrate staining. After the establishment of the tetra-primer ARMS-PCR genotyping protocol, a total of 366 animals from locally adapted Brazilian cattle breeds were selected: 239 *Caracu* (beef), 61 *Caracu Caldeano* (dairy), 19 *Crioulo Lageano*, 14 *Mocho Nacional* and 33 *Pantaneiro* animals.

The optimized PCR conditions were performed in 25µL reaction volume containing 50ng template DNA, 15 pmol of each inner primer and 2.5 pmol of each outer primer, 200 µM dNTP, 2 mM MgCl₂, 1X PCR buffer (Promega, Madison, USA) and 0.5U of GoTaq® Hot Start Polymerase (Promega, Madison, USA). Cycling procedure were set as following: 94°C for 2 min; followed by five cycles of 30 s denaturation step (94°C), 30 s annealing step (starting cycle 1 with 70 °C and decreasing 1°C in each cycle) and 30 s extension step (72 °C); followed by 25 additional cycles of 30 s denaturation (94 °C), 30 s annealing (65 °C) and 30 s extension (72 °C); and 5 min at 72 °C for the final extension step. Figure 1 demonstrates the profile of the DNA amplicons in the gel, clearly differentiating CC, TT and CT genotypes.

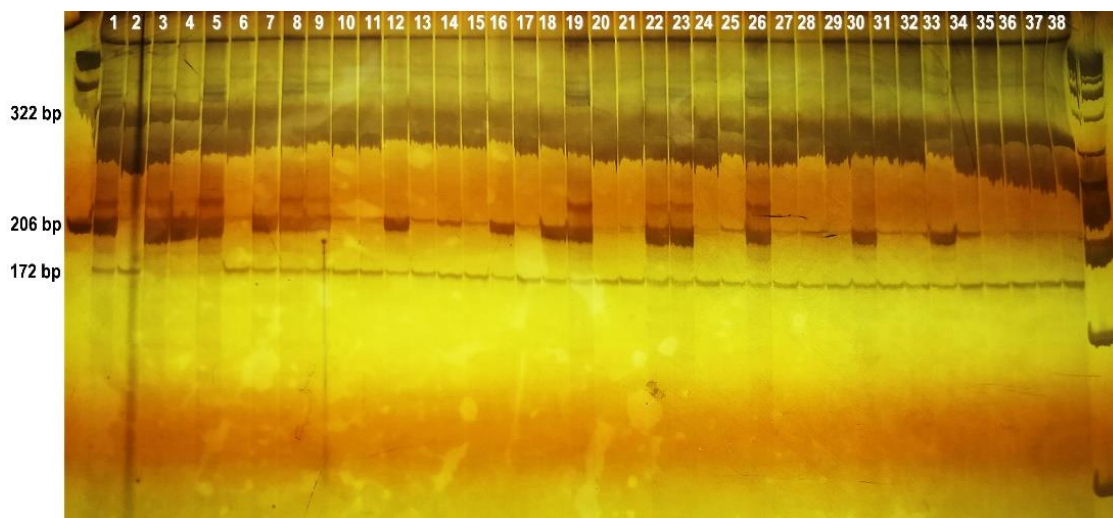


Figure 1. DNA banding pattern from locally adapted Brazilian taurine cattle breeds for the genotyping of the bovine prolactin receptor gene (*PRLR*) SNP 39136666 using tetra-primer ARMS-PCR technique. Example of an image captured from silver stained 8% native polyacrylamide gel showing *Caracu* samples. The 206 bp band indicates the C allele and the 172 bp band indicates the T allele. The 322 bp band indicates the product of the outer primers and was used as positive control for the PCR reactions. Genotype CC (lanes 3, 4, 5), genotype CT (lanes 1, 7, 8, 9, 12, 16, 18, 19, 22, 23, 26, 30, 33) and genotype TT (lanes 2, 6, 10, 11, 13, 14, 15, 17, 20, 21, 24, 25, 27, 28, 29, 31, 32, 34, 35, 36, 37, 38).

The tetra-primer ARMS PCR technique was efficient for the precise differentiation between the SNP39136666 alleles of the *PRLR* gene located at bovine chromosome 20. The 322 base-pair (bp) DNA amplicon was the product of the outer primers which was used as control of the PCR reaction. The length of the amplified DNA amplicons was different enough to be effectively separated in 8% polyacrylamide gel electrophoresis. The 206 bp DNA amplicon was visualized when the C allele was present and the 172 bp DNA amplicon when the T allele was present (Figure 1). The optimal PCR condition was obtained with 6:1 concentration ratio between the inner and outer primers and the use of touch down cycling profile. The 10 animals previously sequenced by NGS had their genotypes 100% confirmed by the protocol developed in this study. The tetra-primer ARMS-PCR genotyping technique was also successfully used to genotype lethal haplotype 1 in Holstein Friesian cattle (Kumar *et al.*, 2020) and *AGPAT6* gene, associated with milk fat content in Karan Fries Breeding Bulls (Upadhyay *et al.*, 2019).

Over the past 500 years, periodic introductions of taurine cattle of Iberian origin have occurred in Brazil, resulting in a wide range genetic diversity found today in the locally adapted Brazilian

breeds. The p.R497* mutation, initially described in the *Carora* and *Limoneiro* breeds, was also found in the samples assessed in this study. Allelic and genotypic frequencies were calculated for each breed (Table 1). *Caracu* animals showed the highest frequency of the T allele (75% and 80%). In the *Mocho Nacional* and *Pantaneiro* breeds, the C and T alleles were found averagely distributed within the samples (T 57% and C 43%, T 41% and C 59%), respectively. *Crioulo Lageano* breed showed the lowest frequency of the T allele (16%).

As the T allele is strongly related to the slick hair phenotype, which provides a higher thermal tolerance in cattle, this allele could have been naturally selected over the past 500 years, since this breed is more commonly found in the warmer regions of central Brazil (*The Cerrados*). On the other hand, *Crioulo Lageano* breed is more commonly found in the temperate environment of southern Brazil, which would indicate the absence of selective pressure for the T allele. Since this SNP was recently described by Porto-Neto *et al.* (2018), we did not find information in the literature regarding the frequency of this SNP in additional cattle breeds.

Table 1. Observed allelic and genotypic frequencies of SNP 39136666 located at the prolactin receptor gene in locally adapted Iberian derived Brazilian cattle breeds

Locally adapted cattle breeds	Number of animals	Allele frequency (%)		Genotypic frequency (%)		
		T	C	TT	CT	CC
<i>Caracu Caldeano (dairy)</i>	61	80	20	64	32	4
<i>Caracu (beef)</i>	239	75	25	54	42	4
<i>Crioulo Lageano</i>	19	16	84	0	32	68
<i>Mocho Nacional</i>	14	57	43	21	71	7
<i>Pantaneiro</i>	33	41	59	18	45	36

In conclusion, we developed a tetra-primer ARMS-PCR protocol for the identification of the SNP39136666, located at the prolactin receptor gene sequence in cattle, which proved to be a fast, efficient, accurate, and inexpensive alternative for the identification of this SNP. Locally adapted Iberian derived Brazilian *Caracu*, *Crioulo Lagiano*, *Mocho Nacional* and *Pantaneiro* breeds

showed different frequencies of this SNP. *Caracu* breed showed the highest frequency of the T allele which is directly associated with the slick hair phenotype.

Keywords: short and smooth hair gene, characteristics of tropical adaptation, cattle

RESUMO

As raças taurinas de origem ibérica *Limonero* e *Carora* (*Bos primigenius taurus*) possuem o fenótipo de pelo curto, liso e com baixa densidade folicular, o que confere a esses animais maior tolerância térmica e melhor produtividade em regiões quentes. Diferentes mutações associadas a esse fenótipo foram descritas no gene do receptor de prolactina *PRLR*, localizado no cromossomo bovino *BTA20*. Uma mutação recentemente encontrada é a substituição do nucleotídeo C por T, SNP 39136666 (p. R497*), no exon 11, que gera um códon de parada e, conseqüentemente, uma menor isoforma desse receptor. Neste trabalho, desenvolveu-se um protocolo rápido e de baixo custo para detecção desse SNP, utilizando-se a técnica de tetra-primer ARMS-PCR. Assim, foi possível detectar essa mutação nas raças brasileiras de origem ibérica localmente adaptadas: *Caracu*, *Crioulo Lageano*, *Mocho Nacional* e *Pantaneiro*. O alelo T foi mais frequente na raça *Caracu* (80%), enquanto o alelo C foi mais frequente na raça *Crioulo Lageano* (84%). Essa simples metodologia pode ser usada para genotipar esse SNP e ajudar na aplicação dessas informações moleculares em programas de melhoramento focados na tolerância térmica em bovinos taurinos e seus mestiços.

Palavras-chave: gene do pelo curto e liso, características de adaptação tropical, bovinos

REFERENCES

AHLAWAT S.; SHARMA R.; MAITRA A. *et al.* Designing, optimization and validation of tetra-primer ARMS PCR protocol for genotyping mutations in caprine *Fec* genes. *Meta Gene*, v.2, p.439-449, 2014.

ANDERSON D.M.; ESTELL, R.E.; GONZALEZ, A.L. *et al.* Criollo cattle: heritage genetics for arid landscapes. *Rangelands*, v.3, p.762-767, 2015.

COLLINS, A.W.; KE, X. Primer1: primer design Web service for Tetra-Primer ARMS-PCR. *Open Bioinformatics J.*, v.6, p.55-58, 2012.

GUIS, H.; CAMINADE, C.; CALVETE, C. *et al.* Modelling the effects of past and future climate on the risk of bluetongue emergence in Europe. *J. R. Soc. Interface*, v.9, p.339-350, 2012.

HUSON, H.J.; KIM, E.S.; GODFREY, R.W. *et al.* Genome-wide association study and ancestral origins of the slick-hair coat in tropically adapted cattle. *Front.Genet.*, v.5, p.1-12, 2014.

KUMAR A.; GUPTA I.D.; MOHAN G. *et al.* Development of PCR based assays for detection of lethal Holstein haplotype 1, 3 and 4 in Holstein Friesian cattle. *Mol. Cell. Probes*, v.50, p.101503, 2020.

- LANDAETA-HERNÁNDEZ A.; ZAMBRANO-NAVA S.; HERNÁNDEZ-FONSECA J.P. *et al.* Variability of hair coat and skin traits as related to adaptation in Criollo Limonero cattle. *Trop. Anim. Health Prod.*, v.43, p.657-663, 2011.
- LEMOES M.V.A.; BERTON M.P.; CAMARGO G.M.F. *et al.* Copy number variation regions in Nelore cattle: evidences of environment adaptation. *Livest. Sci.*, v.207, p.51-58, 2018.
- LI M.; SUN X.; JIANG J. *et al.* Tetra-primer ARMS-PCR is an efficient SNP genotyping method: An example from SIRT2. *Anal. Methods*, v.6, p.1835-1840, 2014.
- LITTLEJOHN, M.D.; HENTY, K.M.; TIPLADY, K. *et al.* Functionally reciprocal mutations of the prolactin signalling pathway define hairy and slick cattle. *Nat. Commun.*, v.5, p.1-8, 2014.
- MARIASEGARAM M.; CHASE JR. C.C.; CHAPARRO J.X. *et al.* The slick hair coat locus maps to chromosome 20 in Senepol-derived cattle. *Anim. Genet.*, v.8, p.54-59, 2007.
- MARTÍNEZ, A.M.; GAMA, L.T.; CAÑÓN, J. *et al.* Genetic footprints of Iberian cattle in America 500 years after the arrival of Columbus. *PLoS One*, v.7, p.1-13, 2012.
- OLSON T.A.; LUCENA C.; CHASE JR. C.C.; HAMMOND A.C. Evidence of a major gene influencing hair length and heat tolerance in *Bos taurus* cattle. *J. Anim. Sci.*, v.81, p.80-90, 2003.
- OSEI-AMPONSAH R.; CHAUHAN S.S.; LEURY B.J. *et al.* Genetic selection for thermotolerance in ruminants. *Animals*, v.9, p.948, 2019.
- PORTO-NETO, L.R.; BICKHART, D.M.; HERNANDEZ, A.J.L. *et al.* Convergent evolution of slick coat in cattle through truncation mutations in the prolactin receptor. *Front. Genet.*, v.9, p.1-8, 2018.
- TURNER, H.G.; SCHLEGER, A.V. The significance of coat type in cattle. *Aust. J. Agric. Res.*, v.11, p.645-663, 1960.
- UPADHYAY A.; CHAKRAVARTY A.K.; DE, S. *et al.* Detection of Single-Nucleotide Polymorphism in AGPAT6 Gene, associated with Milk Fat content, using Tetra-Primer ARMS PCR-Based Assay, in Karan Fries Breeding Bulls. *Iran. J. Biotech.*, v.17, p.e2084, 2019.