








## Phytoplankton dynamics in a drinking water catchment zone at the Amazon River mouth

Natalina Borges da Silva<sup>1</sup> , Luis Mauricio Abdon da Silva<sup>2</sup> , Luís Roberto Takiyama<sup>2</sup> ,  
Mariano Araújo Bernardino Rocha<sup>3</sup>  and Elane Domênica Cunha de Oliveira<sup>2\*</sup> 

Received: November 13, 2020

Accepted: April 16, 2021

### ABSTRACT

Phytoplankton is formed by photosynthesizing microorganisms that act as primary producers in distinct water bodies. These include microalgae and cyanobacteria. It is essential to know the phytoplankton in water catchment areas intended for drinking water treatment once their excessive density may result in problems, such as taste and odor in the water, toxin production, filter clogging, and other damages. This study investigated the phytoplankton dynamics and the environmental factors that may influence phytoplankton density in the drinking water catchment zone of Macapá, a city located on the Amazon River mouth. The sampling was carried out monthly from April/2015 to March/2016. The study reports the first detailed information on the phytoplankton in the study area since previously published studies regarded only cyanobacteria. The species *Limnithrix planctonica* and *Aulacoseira granulata* may substantially influence the water treatment due to their great abundance in the study area, especially in July and November, when their density peaks occur, respectively. Nevertheless, *Aulacoseira granulata* is the primary constituent of the phytoplankton biovolume. This study provides biological and sanitary information to guide public administration towards improving the quality and safety of water supply services, and also to increase the biodiversity knowledge of Amazonian phytoplankton.

**Keywords:** Amazon River, cyanobacteria, Macapá, microalgae, water supply, water treatment

## Introduction

Phytoplankton comprises photosynthetic microorganisms-microalgae and cyanobacteria-adapted to live partly or continuously in open water (Chorus & Bartram 1999; Reynolds 2006). These organisms are responsible for the oxygenation of aquatic ecosystems, where they act as the primary producer of organic carbon (Reynolds 2006).

Phytoplankton populations may increase rapidly (bloom) as a consequence of eutrophication and pollution of the

water body. High phytoplankton densities in the water supply impair the water quality since these organisms may cause several problems for drinking water treatment, such as the production of toxins, taste and odor compounds, trihalomethanes, clogging of filters, and reduction of efficiency to produce finished water (Di Bernardo 1995; Chorus & Bartram 1999; Ewerts *et al.* 2013; Oliver & Ribeiro, 2014).

Some species from the cyanobacteria, diatoms, chlorophytes, chrysophytes, rhodophytes, and dinoflagellates

<sup>1</sup> Polícia Técnico-Científica do Amapá, 68908-575, Macapá, AP, Brazil

<sup>2</sup> Instituto Pesquisas Científicas e Tecnológicas do Estado do Amapá, 68903-419, Macapá, AP, Brazil

<sup>3</sup> Universidade do Estado do Amapá, 68900-070, Macapá, AP, Brazil

\* Corresponding author: elanedsc@yahoo.com.br



are known to cause problems to water treatment plants (Watson 2009; Ewerts *et al.* 2013; Niiyama *et al.* 2016). In the case of the production of taste and odor compounds, some of the principal causes that make difficult the source-tracking of these compounds include species misidentification (Watson & Jüttner 2019). Because of these issues, it is essential to know the phytoplankton composition and density to prevent or quickly solve future trouble related to water treatment concerns.

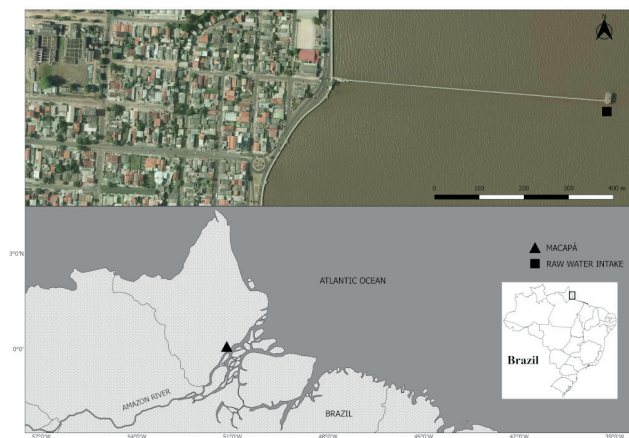
This study was conducted in Macapá, a city located at the Amazon River mouth, whose waters are the primary source of water supply in town. This estuary area has multiple uses like the loading/unloading of cargo and passengers, sports, bathing, fishing, and leisure (Oliveira *et al.* 2019a). Besides that, there is an occasional and diffuse discharge of effluents into the river, which provides nutrients for phytoplankton population growth (Bastos *et al.* 2009).

The purpose of this study is to investigate the phytoplankton composition, density, and biovolume, and the environmental factors that may have an influence on phytoplankton density in the drinking water catchment zone of Macapá. The results intend to guide public administration towards improving the quality and safety of water provision services.

## Materials and methods

### Study area and sampling procedures

The samples were collected in the city of Macapá, at the Company of Water Supply and Sewage of Amapá (CAESA), at the raw water intake point, which is situated approximately 500 meters from the Amazon River bank (Fig. 1), nearby the city downtown. Macapá is a city located in the Northern Channel of the Amazon River in the State of Amapá, Brazilian Amazonia.



**Figure 1.** Study area: water intake point for water supply in the municipality of Macapá, State of Amapá.

Sampling occurred monthly from April/2015 to March/2016 during a tidal cycle (13 hours). We collected material for qualitative and quantitative studies of phytoplankton as well as physicochemical analysis of the water.

### Environmental variables

The environmental data measured were turbidity, suspended solids, precipitation, insolation, radiation, water temperature, water transparency, dissolved oxygen, nutrients (nitrate, nitrite, ammonia, phosphorus, and phosphate), and pH (Tab. 1).

### Qualitative analysis of phytoplankton

We collected the qualitative analysis samples every two hours, using the horizontal and simultaneous dragging of two plankton nets-20 $\mu$ m and 64 $\mu$ m mesh opening. In one day of sampling work, we provided seven samples for each plankton net used. In the laboratory, we took aliquots from the 20 $\mu$ m mesh samples and combined them into a single representative sample; we did the same with the 64 $\mu$ m mesh samples. This technique, known as composite sampling (Brandão *et al.* 2011), allowed the formation of a monthly qualitative sample for each plankton net employed, which reduced the sampling effort and shortened the analysis time. Qualitative samples were preserved with *Transeau's* solution (Bicudo & Menezes 2006).

We identified the taxa under standard light microscopy with the aid of specialized bibliography (Prescott *et al.* 1977; 1982; Anagnostidis & Komárek 1986; 1988; Komárek & Anagnostidis 1999; Godinho 2005; Bicudo & Menezes 2006; Sant'Anna *et al.* 2006; Faustino 2006; Godinho 2009) and recent taxonomic papers describing new genera, examining ten slides for each sample. Richness was calculated as the number of species founded in the slides.

### Phytoplankton counting

For phytoplankton counting, we collected samples monthly at the raw water intake during high tide and stored them in a 1L amber glass bottle, preserved with 8mL of Lugol's solution. The quantitative analyzes were performed using the Utermöhl sedimentation method (Utermöhl 1958) in 5 mL Utermöhl chambers, visualized in an inverted microscope under a 400x magnification. After sedimentation, we counted the organisms throughout the whole chamber base. To obtain the phytoplankton density (organisms per milliliter), the number of organisms was multiplied by 0.2 (1/5=one whole base of the chamber divided by the decanted volume 5mL) (APHA 2010; Cetesb 2012). To determine the abundant and dominant species, we used the Lobo & Leighton (1986) criterion, where abundant species are those whose number of individuals is higher than the average value of the total number of individuals per species in a sample. The dominant species are those with  $\geq 50\%$  of the total number of individuals in the sample.

### Average and total biovolume

The average biovolume ( $\mu\text{m}^3$ ) was determined from measurements of 10 to 30 individuals of each species taking into account the simplest geometric configuration (sphere, cone, cylinder, prism, ellipsoid, spheroid, and cuboid) that best suited for phytoplankton organisms' shapes, disregarding mucilages or arrows (Hillebrand *et al.* 1999). As a means to obtain the total biovolume ( $\mu\text{m}^3 \text{mL}^{-1}$ ), we multiplied the average biovolume of the individuals by their density.

### Statistical analysis

A Canonical Correspondence Analysis (CCA) was used to infer the relationship between abiotic variables and phytoplankton species. To perform the CCA, we used data on the relative abundance of phytoplankton. Species with a density of  $\leq 10\%$  of the total density or frequency of occurrence  $< 1/5$  of the most common species were excluded to reduce trends caused by rare species. Then, we transformed the biological and environmental data into  $\ln(x + 1)$  to standardize distribution and reduce the effects of the most abundant species. After that, we selected physical and chemical parameters with the ordistep function of the R 3.4.3 software (R Development Core Team 2017). Subsequently, we calculated the inflation factor (VIF) to exclude multicollinear variables, eliminating the variables with  $\text{VIF} \geq 15$  (Oksanen 2012). This selection aimed at removing irrelevant explanatory variables in the analysis,

highly correlated factors, and variables with relatively little variation (Ter Braak & Verdonschot 1995).

After the screening above, we performed CCA with four environmental variables (suspended solids, rainfall, ammonia ( $\text{NH}_4$ ), and dissolved oxygen) and the most common phytoplankton species detected in the study.

## Results

### Environmental aspects

The characterization of the environmental parameters is summarized in Table 2. Throughout the study, the Amazon River turbidity presented an average value of 49.30 NTU (range= 19.80-122 NTU), and suspended solids averaged 52.85  $\text{mg.L}^{-1}$  (range= 24.70- 119.20  $\text{mg.L}^{-1}$ ). The water transparency varied from 12.50 cm (rainy season) to 36.50 cm (dry period).

Regarding monthly precipitation in Macapá city, the wettest months were April 2015 (584.50 mm) and February 2016 (528.20 mm). It is noteworthy that there was no rainfall in September, October, and November 2015 (dry period of the region). The average monthly insolation in Macapá ranged from 3.30 to 9.79 hours, and the months between August-December 2015 presented the highest insolation. Regarding irradiation, on the sampling day, there was a variation between 86.60 to 312.30  $\text{W.m}^{-2}$ , with an average of 236.82  $\text{W.m}^{-2}$ .

**Table 1.** Measurement units of the physical and chemical parameters, methods, analysis equipment, and database.

	Parameter	Unit	Method / Equipment / Database
<b>Physical</b>	Turbidity	NTU	Horiba multi-parameter probe
	Suspended solids	$\text{mg L}^{-1}$	Gravimetric analysis (APHA 2012)
	Rainfall	Mm	INMET
	Insolation	Hour	INPE
	Radiation	$\text{W m}^{-2}$	INP
	Water temperature	$^{\circ}\text{C}$	Horiba multi-parameter probe
	Water transparency	Cm	Secchi Disk
<b>Chemical</b>	Dissolved Oxygen (DO)	$\text{mg L}^{-1}$	YSI 550 A DO (Dissolved oxygen meter)
	Nitrate ( $\text{NO}_3$ )	$\text{mg L}^{-1}$	Cadmium reduction (APHA 2012)
	Nitrite ( $\text{NO}_2$ )	$\text{mg L}^{-1}$	Diazotization (APHA 2012)
	Ammonia ( $\text{NH}_3$ )	$\text{mg L}^{-1}$	Phenate method (APHA 2012)
	Phosphorus (P)	$\text{mg L}^{-1}$	Molybdenum blue (APHA 2012)
	Phosphate ( $\text{PO}_4^{3-}$ )	$\text{mg L}^{-1}$	Molybdenum blue (APHA 2012)
	Water pH measurements	-	Orion Star A121 pH meters

**Table 2.** Minimum, maximum, average and standard deviation values of environmental variables. Turb – Turbidity (NTU); SS – Suspended solids ( $\text{mg L}^{-1}$ ); Rain – Rainfall (mm); Ins – Insolation (hours); Irrad – Irradiation ( $\text{W m}^{-2}$ ); W T – Water Temperature ( $^{\circ}\text{C}$ ); Transp – Water transparency (cm); DO - Dissolved oxygen;  $\text{NO}_3$  – Nitrate ( $\text{mg L}^{-1}$ ),  $\text{NO}_2$  – Nitrite ( $\text{mg L}^{-1}$ );  $\text{NH}_3$  – Ammonia ( $\text{mg L}^{-1}$ ); P – Phosphorus ( $\text{mg L}^{-1}$ );  $\text{PO}_4^{3-}$  - Phosphate ( $\text{mg L}^{-1}$ ); pH – Hydrogen potential.

	Turb	SS	Rain	Ins	Irrad	W T	Transp	DO	$\text{NO}_3$	$\text{NO}_2$	$\text{NH}_3$	P	$\text{PO}_4^{3-}$	pH
<b>Minimum</b>	19.80	24.77	0.00	3.30	86.60	28.12	12.50	6.60	0.00	0.02	0.00	0.00	0.00	6.00
<b>Maximum</b>	122.00	119.2	584.50	9.79	312.30	30.27	36.50	7.79	0.93	0.07	0.20	0.12	0.38	7.20
<b>Average</b>	49.30	52.85	213.66	7.05	236.82	29.60	26.21	7.16	0.46	0.04	0.06	0.03	0.08	6.57
<b>Standard Deviation</b>	37.23	33.52	221.87	2.33	76.23	0.66	8.75	0.40	0.38	0.02	0.06	0.03	0.11	0.28





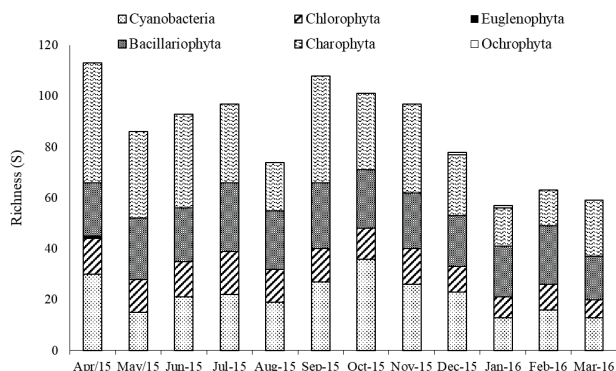
## Phytoplankton dynamics in a drinking water catchment zone at the Amazon River mouth

The average water temperature in the Amazon River was 29.6 °C (range= 28.12 -30.27 °C); dissolved oxygen ranged from 6.60 mg.L<sup>-1</sup> to 7.79 mg.L<sup>-1</sup>; and pH values ranged from 6.0 (slightly acidic) to 7.2 (neutral) (Tab. 2).

Regarding nutrients, nitrate values ranged from 0.08 to 0.93 mg.L<sup>-1</sup>; nitrite from 0.02 to 0.07 mg.L<sup>-1</sup>; ammonia from 0.01 to 0.20 mg.L<sup>-1</sup>; phosphorus from 0.01 to 0.04 mg.L<sup>-1</sup>; and phosphate from 0.02 to 0.38 mg.L<sup>-1</sup>.

### Qualitative analysis of phytoplankton

Species composition analysis allowed the identification of 180 taxa distributed in six divisions: Cyanobacteria, Chlorophyta, Bacillariophyta, Euglenophyta, Charophyta, and Ochrophyta (Tab. S1 in supplementary material). Charophyta was the most expressive group, presenting the highest richness values (S = 73). Species richness ranged from 59 to 114 taxa over the study period, with April and September 2015 showing the highest richness values, 114 and 110, respectively (Fig. 2).



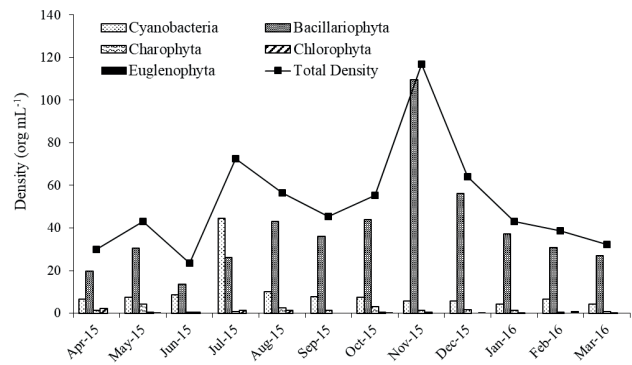
**Figure 2.** Richness by taxonomic division.

### Phytoplankton counting

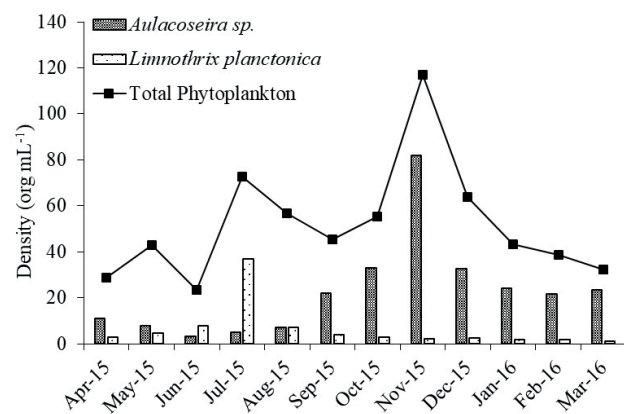
We identified forty-four taxa in the counting samples, belonging to Bacillariophyta, Charophyta, Chlorophyta, Cyanobacteria, and Euglenophyta. Diatoms presented higher density throughout the study except in July when Cyanobacteria were the group with the highest density values.

The months of highest phytoplankton density were July (72.6 org. mL<sup>-1</sup>) and November 2015 (117 org. mL<sup>-1</sup>), when there were peaks of cyanobacteria and diatoms, respectively. In July 2015, the Cyanobacteria density was 44.4 org. mL<sup>-1</sup> (61.2 % of total period density), and in November 2015, the Bacillariophyta density was 109.6 org.mL<sup>-1</sup> (93.7 % of total month density) (Fig. 3).

Figure 4 shows a comparison between the total phytoplankton density and that of *Aulacoseira granulata* and *Limnithrix planctonica*. The organisms with the highest density values were: *A. granulata* (Heterokontophyta) and *L. planctonica* (Cyanophyta) (Fig. 5). The high density of these two species resulted in the dominance alternation of Bacillariophyta and Cyanobacteria.



**Figure 3.** Phytoplankton density by taxonomic division in the Amazon River from April 2015 to March 2016.



**Figure 4.** Comparison between the total phytoplankton density and that of the most abundant species.

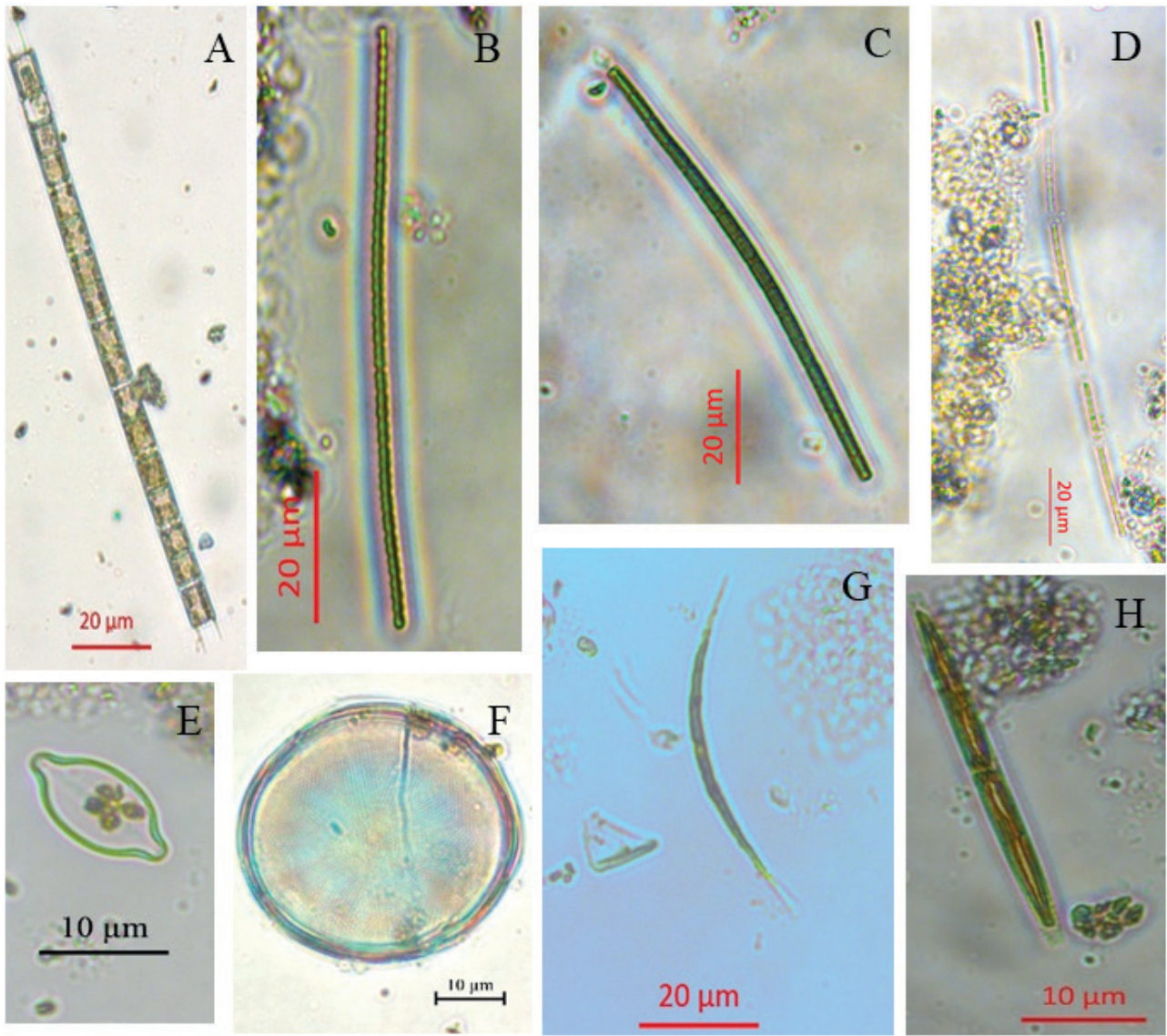
*Aulacoseira granulata* and *Limnithrix planctonica* were dominant species, while *Alkalinema pantanalense*, *Leptolyngbya* sp., *L. planctonica*, *Closterium acutum*, *Ulnaria* sp., *Placoneis* sp., *A. granulata* e *Actinocyclus* sp. were considered abundant (Figs. 5 and 6).

### Determination of total and average biovolume

Bacillariophyta species showed the highest biovolume values (Tab. 3), suggesting that the phytoplankton in the study area is essentially formed by diatoms. Thus, whereas the density results indicated significant participation of Cyanobacteria, the biovolume determination revealed that Bacillariophyta had a greater number of large species than the other groups.

The monthly phytoplankton biovolume ranged from 53075.9 μm<sup>3</sup> mL<sup>-1</sup> in June/2015 to 774438.6 μm<sup>3</sup> mL<sup>-1</sup> in November/2015. This peak was influenced by the species *Aulacoseira granulata* (Bacillariophyta). The pattern of phytoplankton density results was different from the biovolume. For density, two months were remarkable (July/15 and November/15) with emphasis on the densities of *Limnithrix planctonica* and *A. granulata*; however, regarding biovolume, *A. granulata* stands out for its high dimensions. In this sense, diatoms constitute the phytoplankton in the





**Figure 5.** Abundant and dominant species: (A) *Aulacoseira granulata*, (B) *Alkalinema pantanalense*, (C) *Limnothrix planctonica*, (D) *Leptolyngbya* sp., (E) *Placoneis* sp., (F) *Actinocyclus* sp., (G) *Closterium acutum*, and (H) *Ulnaria* sp.

study area, especially *Aulacoseira granulata* (Fig. 5A). Figure 7 shows the significant participation of this species in total monthly biovolume.

#### *Influence of environmental factors on phytoplankton*

To perform canonical correspondence analysis (CCA), a previous statistical analysis (forward selection) chose the environmental variables that had more influence on the abundance of phytoplankton from a matrix of 14 environmental variables (Tab. 2): suspended solids, rainfall, ammonia (NH<sub>4</sub>), and dissolved oxygen. We used these four variables to perform the CCA with the most abundant and frequent phytoplankton taxa: *Limnothrix planctonica*, *Alkalinema pantanalense*, *Leptolyngbya* sp., *Closterium*

*acutum*, *Actinocyclus* sp., *Aulacoseira granulata*, *Pinullaria* sp., *Placoneis* sp., *Ulnaria* sp., and *Surirella guatemalensis*.

The axes 1 and 2 accounted for 96.03 % of the variance (axis 1: 81.47 %; axis 2: 14.56 %). We evaluated the significance of the ordination axes and the environmental indicators using the Monte Carlo permutation test (999 randomizations).

During the study period, two environmental factors greatly influenced the species distribution: suspended solids and ammonia. Suspended solids strongly influenced the abundance of *Leptolyngbya* sp. and *Aulacoseira granulata*, with *A. granulata* being more abundant in November. *Limnothrix planctonica* and *Alkalinema pantanalense* showed ammonia as the determining factor and occurred in greater densities in June and July, a time when the suspended solids were lower (Fig. 8).

## Discussion

Concerning the physicochemical parameters, the Amazon River presents typical whitewater river characteristics: near-neutral pH, turbid waters rich in dissolved and suspended sediments, electrical conductivity between 40-100  $\mu\text{S}\cdot\text{cm}^{-1}$ , and low transparency (Sioli 1984; Junk *et al.* 2011).

The qualitative analysis clearly shows the great richness of species encountered in the intake point ( $S = 180$ ). This inventory may guide the drinking water treatment management in the case of need to identify causes (precursors) of taste and odor compounds, since the predominant species in the area may not necessarily be the main source of the odor (Otten *et al.* 2016; Chong *et al.* 2018; Watson & Jüttner 2019). Besides, the qualitative

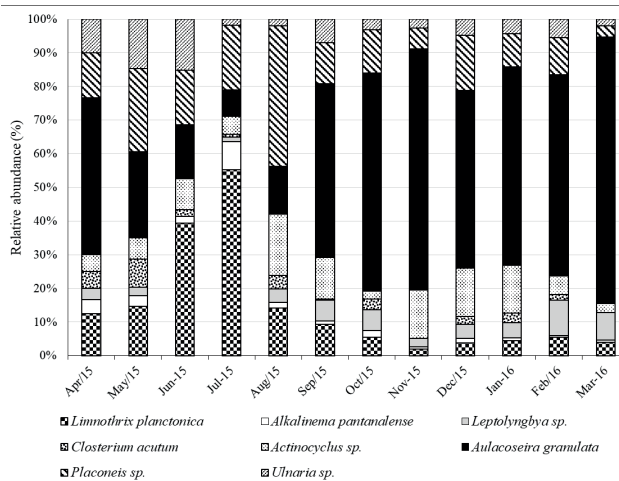
**Table 3.** Amazon River phytoplankton average biovolume in the study area CYAN – Cyanobacteria; CHLO – Chlorophyta; CHAR– Charophyta; BACI – Bacillariophyta; EUGL – Euglenophyta; GS – Geometric Shape; AB– Average Biovolume ( $\mu\text{m}^3$ ).

Division	Taxon	GS	AB ( $\mu\text{m}^3$ )
CYAN	<i>Limnothrix planctonica</i>	Cylinder	219.71
CYAN	<i>Alkalinema pantanalense</i>	Cylinder	99.06
CYAN	<i>Leptolyngbya</i> sp.	Cylinder	73.43
CYAN	<i>Pseudanabaena</i> sp.	Cylinder	240.18
CYAN	<i>Anabaena</i> sp.	Cylinder	2041.99
CYAN	<i>Dolichospermum</i> sp.	Cylinder	4662.17
CYAN	<i>Geitlerinema splendidum</i>	Cylinder	8661.33
CYAN	<i>Cephalothrix</i> sp.	Cylinder	10458.16
CYAN	<i>Raphidiopsis</i> sp.	Cylinder	91.08
CYAN	Ciano sp.	Cylinder	920.39
CHLO	<i>Actinastrum</i> sp.	Cylinder + 2 Cones	78.3
CHLO	<i>Acutodesmus</i> sp.	Cylinder + 2 Cones	375.5
CHLO	<i>Ankistrodesmus</i> sp.	Cylinder + 2 Cones	398
CHLO	<i>Desmodesmus communis</i>	Spheroid	246.2
CHLO	<i>Lacunastrum</i> sp.	Cylinder	1780
CHLO	<i>Nephrocytium</i> sp.	Ellipsoid	2200
CHLO	<i>Volvox</i> sp.	Sphere	900
CHLO	<i>Eudorina elegans</i>	Sphere	932
CHLO	<i>Mucidosphaerium pulchellum</i>	Sphere	310.9
CHLO	<i>Mougeotia</i> sp.	Cylinder	2433.46
CHLO	<i>Staurastrum quadrinotatum</i>	2 Truncated Cones	764
CHLO	<i>Staurastrum leptocladum</i>	2 Truncated Cones	1029.62
CHLO	<i>Scenedesmus acuminatus</i>	Cylinder + 2 Cones	375
CHAR	<i>Closterium acutum</i>	2 Cones	1800
CHAR	<i>Closterium gracile</i>	2 Cones	200
CHAR	<i>Closterium</i> sp.	2 Cones	4500
CHAR	<i>Closterium</i> sp.	2 Cones	3800
CHAR	<i>Closterium setaceum</i>	2 Cones	2620
CHAR	<i>Desmidium bailey</i>	Cylinder	11471.55
BACI	<i>Actinocyclus</i> sp.	Cylinder	4200
BACI	<i>Aulacoseira granulata</i>	Cylinder	8452.63
BACI	<i>Eunotia flexuosa</i>	Sickle-shaped Prism	316.47
BACI	<i>Fragillaria</i> sp.	Cuboid	397.5
BACI	<i>Gyrosigma</i> sp.	Parallelepiped	1500
BACI	<i>Pinularia</i> sp.	Rectangular prism	7900
BACI	<i>Placoneis</i> sp.	Elliptic prism	269.53
BACI	<i>Ulnaria</i> sp.	Cuboid	400
BACI	<i>Urosolenia longiseta</i>	Cylinder	92.15
BACI	<i>Iconella obtusiuscula</i>	Elliptic prism	7500
BACI	<i>Iconella grunowii</i>	Elliptic prism	4000
BACI	<i>Iconella guatimalensis</i>	Elliptic prism	5500
BACI	<i>Iconella linearis</i>	Elliptic prism	4800
BACI	<i>Tabellaria</i> sp.	Cuboid	153.20
EUGL	<i>Phacus</i> sp.	Elliptic prism	1852

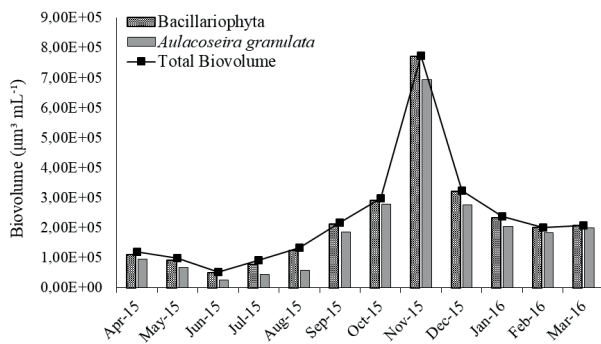
CYAN – Cyanobacteria; CHLO – Chlorophyta; CHAR– Charophyta; BACI – Bacillariophyta; EUGL – Euglenophyta; GS – Geometric Shape; AB– Average Biovolume ( $\mu\text{m}^3$ ).



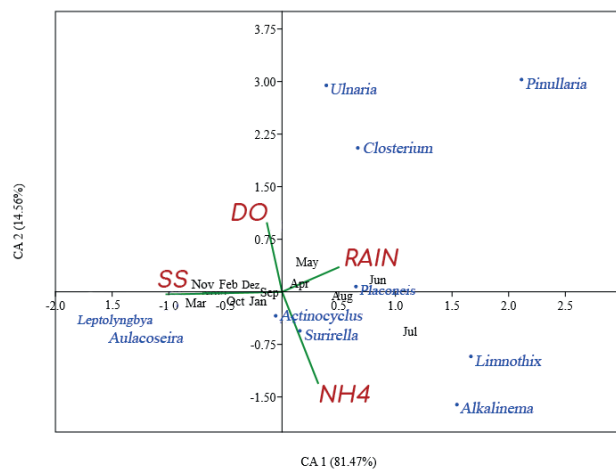




**Figure 6.** Abundant and dominant species at Macapá water intake point.



**Figure 7.** Total biovolume per month, and the contribution of Bacillariophyta and *Aulacoseira granulata*.



**Figure 8.** CCA ordination diagram (axes 1 and 2) applied to the matrix of selected biotic and abiotic variables. SS - Suspended solids; DO - Dissolved Oxygen; NH<sub>4</sub> - Ammonia; RAIN - Rainfall; JAN - January; FEB - February; MAR - March; APR - April; MAY - May; JUN - June; JUL - July; AUG - August; SEP - September; OCT - October; NOV - November; DEC - December; Lepto\_sp. - *Leptolyngbya* sp.; Aula\_gra - *Aulacoseira granulata*; Acti\_sp. - *Actinocyclus* sp.; Sur\_guat - *Surirella guatimalensis*; Plac\_sp. - *Placoneis* sp.; Alka\_pant - *Alkalinema pantanalense*.

analysis will improve the knowledge of phytoplankton species in the Amazon River.

The quantitative analysis, on the other hand, does not consider all the species but detects the abundant and dominant species. This information is essential when considering problems like cyanotoxin production and filter clogging. The quantitative analysis shows that the Bacillariophyta and Cyanobacteria present the highest densities in the study area. *Aulacoseira granulata* (diatom) and *Limnithrix planctonica* (cyanobacteria) dominate the phytoplankton community in the area due to their body shape and physiological aspects greatly adapted to this turbulent and turbid environment (Reynolds *et al.* 1994; Nishimura *et al.* 2015; Oliveira *et al.* 2019a).

*Aulacoseira granulata* and *Limnithrix planctonica* are adapted to water column mixing conditions in shallow waters or mixed layers of 2-3m in thickness (Reynolds *et al.* 2002; Padisák *et al.* 2009; Brasil & Huszar 2011). These conditions match the Amazon River characteristics, as it is turbulent and has no stratification (Sioli 1984). In the intake zone, all depths can be considered within the vertical mixing zone (approximately 3m) all over the year (Junk *et al.* 2014).

Another common feature that favors the dominance of *A. granulata* and *L. planctonica* is their filamentous shape, which implies that these taxa have a relatively high surface area. It makes them good light receptors adapted to grow in environments with low light penetration, such as the Amazon River (Naselli-Flores & Barone 2007; Brasil & Huszar 2011; Nishimura *et al.* 2015; Oliveira *et al.* 2019a).

Concerning the water treatment and supply, *Aulacoseira granulata* is one of the producers of fishy, rancid, oily, grassy, or cucumber odors (AWWA 2010; Watson & Jüttner 2019). *A. granulata* is also problematic regarding coagulation, flocculation, and filtration in the water treatment process (Joh *et al.* 2011). Water treatment processes do not efficiently remove this species due to its long cylindrical shape, high surface to volume ratio ( $S.V^{-1}$ ), extensive superficial area, and higher surface contact with the surrounding media, which are all related to physical buoyancy or difficulties in settling (Padisák *et al.* 2003; Brasil & Huszar 2011; Joh *et al.* 2011). Besides, this species also clogs the sand filters, leading to a need for repeated backwashing, thus limiting the production of clean water (Joh *et al.* 2011).

*Limnithrix planctonica* may produce the microcystin and limnithrixin toxins (Furtado *et al.* 2009; Bernard *et al.* 2011; Humpage *et al.* 2012; Whan 2015). *L. planctonica* strains were already isolated from the study area, but such strains showed no potential for microcystin production (Oliveira *et al.* 2019b). However, another study detected for the first time the presence of microcystin-LR in the Amazon River, at the same site, being *L. planctonica* the main suspect to have produced the toxin (Oliveira *et al.* 2019a).

Although the counting results show that the greatest densities belong to the groups Bacillariophyta and

Cyanobacteria, the biovolume analysis reveals that the phytoplankton in the study area is primarily composed of diatoms, especially by the species *Aulacoseira granulata*. Diatoms constitute a relevant group in terms of algal biomass in the Amazon region (Moreira-Filho *et al.* 1974; Paiva *et al.* 2006; Monteiro *et al.* 2009; Silva *et al.* 2018).

The canonical correspondence analysis shows that suspended solids affect the composition of the phytoplankton community. In this respect, *Aulacoseira granulata* and *Leptolyngbya* sp. have their abundance associated with the months of lower water transparency, while *Limnothrix planctonica* and *Alkalinema pantanalense* are at the opposite end indicating a relationship with greater water transparency. These four species are adapted to low light environments, such as the Amazon River. However, in the trimester June-August, there is an increase in the Amazon water transparency reaching 32cm, which is still a dark environment although much better for photoautotrophs. A study on *Limnothrix* growth at different light intensities (0, 80, 160, 400, 560  $\mu\text{E m}^2 \text{s}^{-1}$ ) showed an increase in cell concentrations under all light intensity, even without light, with glucose addition. The highest cell growth occurred at an intermediate light intensity (160  $\mu\text{E m}^2 \text{s}^{-1}$ ) (Daniels 2016). In the study area, the *L. planctonica* population probably uses light most efficiently at the strength that it occurred from June to August.

As for nutrients, CCA associates *L. planctonica* and *Alkalinema pantanalense* with ammonia, which is the preferred nitrogen source of cyanobacteria (Oliver & Ganf 2000; Grego *et al.* 2004; Bastos *et al.* 2005; Ceballos *et al.* 2006).

The present study consists of qualitative and quantitative research of the phytoplankton community in the catchment area for the water supply of Macapá municipality. The quantitative analysis shows that, in the evaluated environment, two species stand out in terms of density and relative abundance: *Aulacoseira granulata* and *Limnothrix planctonica*. Nevertheless, the biovolume values show the contribution of *A. granulata* as being the most representative in the study area. The paper also shows the environmental influence on phytoplankton species. The suspended solids are a natural condition that helps to control the phytoplankton density. On the other hand, ammonia is a common nutrient in domestic sewage that contributes to the phytoplankton increase and may be reduced with better investment in sanitation. These results demonstrate the biological and sanitary aspects of the species with the highest density and biomass (*A. granulata* and *L. planctonica*), which are more likely to influence water treatment in Macapá city.

## Acknowledgements

We thank the Companhia de Água e Esgoto do Amapá, the Governo do Estado do Amapá, the Exército Brasileiro, the IBGE, and the Laboratório de Química e Saneamento

da UNIFAP. We also thank Eleonora Cunha, Dinaldo Miranda and Sérgio Kléber for technical support. This study was translated and published with resources from the Support Program for National and International Academic Publications of the Universidade do Estado do Amapá.

## References

- Anagnostidis K, Komárek J. 1986. Modern approach to the classification system of cyanophytes: Chroococcales. *Algological Studies* 43: 157-226.
- Anagnostidis K, Komárek J. 1988. Modern approach to the classification system of cyanophytes: Oscillatoriales. *Algological Studies* 50: 327-472.
- APHA – American Public Health Association. 2010. American Water Works Association, Water Pollution Control Federation, & Water Environment Federation. Standard methods for the examination of water and wastewater. Vol. 2. [http://srjstaff.santarosa.edu/~oraola/Assets/APHA\\_SM\\_20.pdf](http://srjstaff.santarosa.edu/~oraola/Assets/APHA_SM_20.pdf).
- APHA - American Public Health Association. 2012. American Water Works Association – Awwa; Water Pollution Control Federation - Wpcf. Standard methods for the examination of water and waste water. 22th. edn. Washington, DC, American Public Health Association.
- AWWA. 2010. American Water Works Association. *Algae: Source to Treatment*. 1st. edn. Denver, American Water Works Association.
- Bastos RB, Feitosa FAN, Muniz K. 2005. Variabilidade espaço-temporal da biomassa fitoplanctônica e hidrológica no estuário do rio Una (Pernambuco, Brasil). *Tropical Oceanography* 33: 1-18.
- Bastos AM, Cunha AC, Bastos CMCB. 2009. Conflitos socioambientais em áreas de ressaca de Macapá e Santana: Modelagem de dispersão de esgoto doméstico na bacia do igarapé da fortaleza. In: XVIII Simpósio Brasileiro de Recursos Hídricos. Anais. Campo Grande/MS, Associação Brasileira de Recursos Hídricos. [https://abrh.s3.sa-east-1.amazonaws.com/Sumarios/110/ec19014f3c02f309a98d1487331e8418\\_8cf5c304f97826315a3a7265ec3cec69.pdf](https://abrh.s3.sa-east-1.amazonaws.com/Sumarios/110/ec19014f3c02f309a98d1487331e8418_8cf5c304f97826315a3a7265ec3cec69.pdf).
- Brasil J, Huszar VLM. 2011. O papel dos traços funcionais na ecologia do fitoplâncton continental. *Oecologia Australis* 15: 799-834.
- Bernard C, Frosco S, Campbell R, Monis P, Humpage A, Fabbro L. 2011. Novel Toxic Effects Associated with a Tropical *Limnothrix*/*Geitlerinema*-Like Cyanobacterium. *Environmental Toxicology* 26: 260-270.
- Bicudo CEM, Menezes M. 2006. *Gêneros de Algas de Águas Continentais do Brasil*. São Carlos, Editora Rima.
- Brandão CJ, Botelho MJC, Sato MIZ, Lamparelli MC. 2011. Guia nacional de coleta e preservação de amostras: água, sedimento, comunidades aquáticas e efluentes líquidos. São Paulo, CETESB.
- Ceballos BSO, Azevedo SMFO, Bendate MMA. 2006. Fundamentos biológicos e ecológicos relacionados as cianobactérias. In: Pádua VL. (ed.) *Contribuição ao estudo da remoção de cianobactérias e microcontaminantes orgânicos por meio de técnicas de tratamento de água para consumo humano*. Rio de Janeiro, Associação Brasileira de Engenharia Sanitária e Ambiental – ABES. p. 23-81.
- Cetesb. 2012. L5.303 Fitoplâncton de Água Doce: Métodos Qualitativo e Quantitativo. São Paulo, Companhia Ambiental do Estado de São Paulo – CETESB.
- Chong S, Lee H, An KG. 2018. Predicting Taste and Odor Compounds in a Shallow Reservoir Using a Three-Dimensional Hydrodynamic Ecological Model. *Water* 10: 1396. doi:10.3390/w10101396
- Chorus I, Bartram J. 1999. *Toxic cyanobacteria in water: a guide to their public health consequences*. Londres, E & FN Spon, on behalf of WHO.
- Daniels O. 2016. Autecology, allelopathy, and toxicity of *Limnothrix* (strain AC0243): Multiple-organism studies using laboratory cultures. PhD Thesis, Central Queensland University, Rockhampton.
- Di Bernardo L. 1995. *Algas e suas influências na qualidade das águas e nas tecnologias de tratamento*. Rio de Janeiro, Associação Brasileira de Engenharia Sanitária e Ambiental – ABES.





- Ewerts H, Swanepoel A, Preez HH. 2013. Efficacy of conventional drinking water treatment processes in removing problem-causing phytoplankton and associated organic compounds. *Water Sa* 39: 739-750.
- Faustino SMM. 2006. O gênero *Staurastrum* (Zygnemaphyceae) no Estado de São Paulo: levantamento florístico. PhD Thesis, Universidade de São Paulo, São Paulo.
- Furtado ALFF, Calijuri MDC, Lorenzi AS, Honda RY, Genuário DB, Fiore MF. 2009. Morphological and molecular characterization of cyanobacteria from a Brazilian facultative wastewater stabilization pond and evaluation of microcystin production. *Hydrobiologia* 627: 195-209.
- Godinho LR. 2005. Gênero *Staurodesmus* (Zygnemaphyceae) no estado de São Paulo: levantamento florístico. MSc Thesis, Instituto de Botânica da Secretaria do Meio Ambiente do Estado de São Paulo, São Paulo.
- Godinho LR. 2009. Família Scenedesmeceae (Chlorococcales, Chlorophyceae) no Estado de São Paulo: levantamento florístico. PhD Thesis, Instituto de Botânica da Secretaria do Meio Ambiente do Estado de São Paulo, São Paulo.
- Grego CKS, Feitosa FAN, Honorato da Silva M, Flores Montes MJ. 2004. Distribuição espacial e sazonal da clorofila-a fitoplânctônica e hidrologia do estuário do rio Timbó (Paulista - PE). *Tropical Oceanography, Paulista* 32: 181-199.
- Hillebrand H, Dürselen CD, Kirschtel D, Pollinger U, Zohary T. 1999. Biovolume calculation for pelagic and benthic microalgae. *Journal of Phycology* 35: 403-424.
- Humpage A, Falconer I, Bernard C, Frosco S, Fabbro L. 2012. Toxicity of the cyanobacterium *Limnospira AC0243* to male Balb/c mice. *Water Research* 46: 1576-1583.
- Joh G, Choi YS, Shin JK, Lee J. 2011. Problematic algae in the sedimentation and filtration process of water treatment plants. *Journal of Water Supply: Research and Technology – AQUA* 60: 219-230.
- Junk WJ, Piedade MTF, Schöngart J, Cohn-Haft M, Adeney J, Wittmann F. 2011. A Classification of Major Naturally-Occurring Amazonian Lowland Wetlands. *Wetlands* 31: 623-640.
- Junk WJ, Piedade MTF, Lourival R, et al. 2014. Brazilian wetlands: their definition, delineation, and classification for research, sustainable management, and protection. *Aquatic Conservation: Marine and Freshwater Ecosystems* 24: 5-22.
- Komárek J, Anagnostidis K. 1999. Cyanoprokaryota, 1. Teil: Chroococcales. *Süsswasserflora von Mitteleuropa* 19: 1-549.
- Lobo E, Leighton G. 1986. Estructuras comunitarias de las fitocenosis planctónicas de los sistemas de desembocaduras de ríos y esteros de la zona central de Chile. *Revista de Biología Marina y Oceanografía* 22: 1-29.
- Monteiro MDR, Melo NFAC, Alves MAMS, Paiva RS. 2009. Composição e distribuição do microfitoplâncton do rio Guamá no trecho entre Belém e São Miguel do Guamá, Pará, Brasil. *Boletim do Museu Paraense Emílio Goeldi* 4: 341-351.
- Moreira-Filho H, Valente-Moreira IM, Trippia-Cecy II. 1974. Diatomáceas do Rio Guamá, Foz do rio - Belém - Estado do Pará. *Leandra* 3: 123-136.
- Naselli-Flores L, Barone R. 2007. Pluriannual morphological variability of phytoplankton in a highly productive Mediterranean reservoir (Lake Arancio, Southwestern Sicily). *Hydrobiologia* 578: 87-95.
- Niiyama Y, Tuji A, Takemoto K, Ichise S. 2016. *Pseudanabaena foetida* sp. nov. and *P. subfoetida* sp. nov. (Cyanophyta/ Cyanobacteria) producing 2-methylisoborneol from Japan. *Fottea* 16: 1-11.
- Nishimura PY, Moschini-Carlos V, Pompêo M. 2015. O estudo do fitoplâncton com base nos grupos funcionais: origens e um vislumbre sobre seu futuro. In: Pompêo M. (ed.) Grupos funcionais do fitoplâncton. Ecologia de reservatórios e interfaces. São Paulo, Universidade de São Paulo. p. 120-130.
- Oksanen J. 2012. Constrained ordination: tutorial with R and vegan. *R-packace Vegan* 1: 10. [http://www.mooreecology.com/uploads/2/4/2/1/24213970/constrained\\_ordination.pdf](http://www.mooreecology.com/uploads/2/4/2/1/24213970/constrained_ordination.pdf).
- Oliveira EDC, Castelo-Branco R, Silva L, et al. 2019a. First Detection of Microcystin-LR in the Amazon River at the Drinking Water Treatment Plant of the Municipality of Macapá, Brazil. *Toxins* 11: 269-288.
- Oliveira EDC, Cunha AC, Silva NB, et al. 2019b. Morphological and molecular characterization of cyanobacterial isolates from the mouth of the Amazon River. *Phytotaxa* 387: 269-288.
- Oliver RL, Ganf GG. 2000. Freshwater blooms. In: Whittom BA, Potts M. (eds.) *The ecology of cyanobacteria*. Dordrecht, Kluwer Academic Publishers. p. 149-194.
- Oliver SL, Ribeiro H. 2014. Variabilidade climática e qualidade da água do Reservatório Guarapiranga. *Estudos Avançados* 28: 95-128.
- Otten TG, Graham JL, Harris TD, Drehera TW. 2016. Elucidation of Taste- and Odor-Producing Bacteria and Toxigenic Cyanobacteria in a Midwestern Drinking Water Supply Reservoir by Shotgun Metagenomic Analysis. *Applied and Environmental Microbiology*. 82: 5410-5420.
- Padisák J, Soróczki-Pintér É, Rezner Z. 2003. Sinking properties of some phytoplankton shapes and their relation of form resistance to morphological diversity of plankton -An experimental study. *Hydrobiologia* 500: 243-257.
- Padisák J, Crossetti LO, Naselli-Flores L. 2009. Use and misuse in the application of the phytoplankton functional classification: a critical review with updates. *Hydrobiologia* 621: 1-19.
- Paiva RS, Eskinazi-Leça E, Passavante JZO, Silva-Cunha MGG, Melo NFAC. 2006. Considerações ecológicas sobre o fitoplâncton da baía do Guamá e foz do rio Guamá, Pará, Brasil. *Boletim do Museu Paraense Emílio Goeldi* 1: 133-146.
- Prescott GW, Croasdale HT, Vinyard WC. 1977. A synopsis of North American desmids. Part II. Section 2. Lincoln, NE, University of Nebraska Press.
- Prescott GW, Bicudo CM, Vinyard WC. 1982. A synopsis of North American desmids. Part II. Section 4. Lincoln, NE, University of Nebraska Press.
- R Development Core Team. 2017. A Language and Environment for Statistical Computing. <http://www.R-project.org>. 10 Nov. 2017.
- Reynolds CS, Descy JP, Padisák J. 1994. Are phytoplankton dynamics in rivers so different from those in shallow lakes? *Hydrobiologia* 285: 1-7.
- Reynolds CS, Huszar V, Kruk C, Naselli-Flores L, Melo S. 2002. Towards a functional classification of the freshwater phytoplankton. *Journal of Plankton Research* 24: 417-428.
- Reynolds CS. 2006. *The Ecology of Phytoplankton (Ecology, Biodiversity, and Conservation)*. Cambridge, Cambridge University Press.
- Sant'Anna CL, Azevedo MTP, Aguiar LF, Carvalho MC, Carvalho LR, Souza RCR. 2006. Manual Ilustrado para Identificação e Contagem de Cianobactérias Planctônicas de Águas Continentais Brasileiras. Rio de Janeiro, Editora Rima.
- Silva NB, Lopes JO, Brito JDM, et al. 2018. Diagnóstico da qualidade da água em áreas utilizadas pela bubalinocultura no Baixo Araguaí, Amapá, Brasil. *Biota Amazônia* 8: 22-28.
- Sioli H. 1984. Hydrochemistry and Geology in the Brazilian Amazon region. *Amazoniana* 1: 74-83.
- Ter Braak CJE, Verdonschot PFM. 1995. Canonical correspondence analysis and related multivariate methods in aquatic ecology. *Aquatic Sciences* 57: 255-289.
- Utermöhl H. 1958. Zur vervollkommnung der quantitativen phytoplanktonmethodik: Mit 1 Tabelle und 15 abbildungen im Text und auf 1 Tafel. *Internationale Vereinigung für Theoretische und Angewandte Limnologie: Mitteilungen* 9: 1-38.
- Watson SB, Caldwell G, Pohnert G. 2009. Fatty acids and oxylipins as semiochemicals. In: Arts M, Brett M, Kainz M. (eds.) *Lipids in Aquatic Ecosystems*. New York, Springer. p. 65-92.
- Watson S, Jüttner F. 2019. Biological production of taste and odour compounds. In: Lin TF, Watson S, Dietrich AM, Suffet IHM. (eds.) *Taste and Odour in Source and Drinking Water: Causes, Controls, and Consequences*. London, UK, IWApublishing. p. 63-112.
- Whan PM. 2015. Investigation of a novel toxin produced by a *Limnospira* cyanobacteria. PhD Thesis, University of Adelaide, Adelaide.

