

# The economic and environmental impact of trade in forest reserve obligations: a simulation analysis of options for dealing with habitat heterogeneity

Kenneth M. Chomitz  
Timothy S. Thomas  
Antônio Salazar P. Brandão

**Abstract:** A tradeable development rights (TDR) program focusing on biodiversity conservation faces a crucial problem: defining which areas of habitat should be considered equivalent. Restricting the trading scope to a narrow area could boost the range of biodiversity conserved but could increase the opportunity cost of conservation.

The issue is relevant to Brazil, where TDR-like policies are emerging. Long-standing laws require each rural property to maintain a legal forest reserve (*reserva legal*) of at least 20%, but emerging policies allow some tradeability of this obligation. This paper uses a simple, spatially explicit model to simulate a hypothetical state-level program. We find that wider trading scopes drastically reduce landholder costs of complying with this regulation and result in environmentally preferable landscapes.

---

Kenneth M. Chomitz is Lead Environmental Economist and Timothy S. Thomas is a consultant with the World Bank, Development Research Group. Antônio Salazar P. Brandão is Professor of Economics, State University of Rio de Janeiro. We are grateful to IBGE for providing us with unpublished census-tract level tabulations of land cover, and to Fundação Getúlio Vargas for providing the land value data. We have benefited greatly from discussions with and background material assembled by Ivana Lamas, Cláudia Costa, Luis Carlos Cardoso Vale, and José Roberto Soares Scolforo. Aline Bernardes and Peter May provided useful comments and assistance. Preparation of this paper was supported by the Global Overlay Program, the Research Support Board, and by Norwegian assistance to the World Development Report 2003. However, the contents of this paper are solely the responsibility of the authors, and should not be attributed to the World Bank, its Board of Executive Directors, or the countries they represent. [kchomitz@worldbank.org](mailto:kchomitz@worldbank.org)

**Keywords:** Brazil, conservation, environment, land use, Minas Gerais, tradeable development rights

**JEL Classification:** R52, Q24

**RESUMO:** *Programas que tenham por objetivo desenvolver um mercado de Direitos Especiais de Propriedade (DEP) enfrentam um problema fundamental, qual seja a definição de áreas de preservação equivalentes. Caso a definição seja por um conceito muito restritivo, poderá ocorrer uma maior conservação da biodiversidade, porém com um aumento do custo de oportunidade da preservação ambiental.*

*O assunto é relevante para o Brasil onde programas semelhantes aos DEP estão surgindo. A legislação exige que cada propriedade rural mantenha pelo menos 20% de sua área na forma de florestas (reserva legal), porém algumas políticas nascentes já permitem tipo de negociação de Direitos. Este trabalho usa um modelo espacial simples para simular o efeito de um programa hipotético implantado em um estado. O principal resultado é que uma política menos restritiva para a comercialização dos DEP reduz de forma expressiva, para os produtores rurais, os custos de cumprir a legislação e leva a soluções preferíveis sob o ponto de vista ambiental.*

*Palavras chave:* Brasil, conservação, meio ambiente, uso da terra, Minas Gerais, comercialização de direitos especiais de propriedade

## I. Introduction

Habitat conservation can be justified on instrumental or intrinsic grounds. The instrumental approach seeks ways to finance conservation of habitats that perform particular “bankable” services such as watershed protection or carbon storage (see e.g. Pagiola, Bishop and Landell-Mills 2002). If successful, this approach will create incentives to preserve some, but not all, habitats. It will promote conservation of moist hillside forests, for instance, and tend to neglect dry forests on plains—even if the latter contain unique biological features.

An alternative approach assumes a moral imperative character to preserve viable examples of every type of natural habitat. Arguing from a well-established log-log relationship between habitat area and number

of species, conservation biologists sometimes advocate a goal of retaining a fixed proportion – ten percent or more -- of each habitat type (Soulé and Sanjayan 1998). In many areas, this goal will not be met without active interventions to protect habitats from agricultural expansion. The costs of these interventions will vary widely, depending on agricultural potential and opportunities. In the developing world, the opportunity cost of conservation may be a few hundred dollars per hectare where the alternative is extensive pasture management or thousands of dollars where the alternative is a high-value perennial crop.

In principle, a transferable development right (TDR) program can minimize the social cost of achieving a target for area conserved, and can reward those undertaking conservation. Such programs have been used on a small scale in the U.S. to preserve farmland and natural areas (Johnston and Madison 1997). On a larger scale, a government could allocate development or conversion rights (denominated in hectares) equivalent to 80 percent of a particular habitat. Trading of these rights would tend to allow conversion of the plots most suitable for agriculture, and retention under natural vegetation of the areas with the lowest opportunity cost. If the rights were freely and equally allocated among property holders (a fiscally inefficient but politically expedient procedure) those who maintained forests would profit from TDR sales. A TDR program is thus the conservation analog of environmental permit programs that regulate air pollution or fisheries access.

The implementers of a TDR program focusing specifically on biodiversity representation face a crucial practical problem: defining equivalence between habitats in different locations.<sup>1</sup> The most natural way to do this in a TDR system is to define zones of equivalence: within each zone, habitat is considered equivalent and substitutable. Science can provide input to this policy issue, but cannot decide it. Forests (or other habitats) can be classified according to a detailed taxonomic hierarchy. Environmental policymakers may differ in their views on how far down the hierarchy to go in determining equivalence. “Lumpers” will favor

---

<sup>1</sup> It has similarly proved difficult to operationalize wetland equivalence for the application of compensatory schemes for wetland mitigation. There, the problem is commensurating a wide range of distinct hydrological and biological functions. See Whigham 1999 and National Research Council 2001.

equivalence within high level classifications, allowing substitutability among all neotropical forests, for instance. “Splitters” of different degrees of rigor will favor restricting forest substitutability to finer classifications; for instance, particular types of neotropical forests (e.g., moist neotropical rainforests), forest subtypes based on unique assemblages of species and communities (e.g. the Atlantic Rainforest of Brazil), forests within particular watersheds, or at the limit, forests within a particular microwatershed of a few thousand hectares. Choice of the appropriate level involves a trade-off between the efficiency gains offered by a broad classification, and the potentially greater representation of biodiversity offered by a fine classification. (Consideration of environmental goals other than biodiversity, such as maintenance of hydrological processes, would complicate the trade-off.)

This issue is of particular relevance to Brazil, where TDR-like programs are emerging. The Forest Code of 1965 (and indeed its precursor of 1934) requires each landowner to maintain a proportion of each property under natural vegetation as a legal forest reserve. The proportion ranges from 20 percent in southern Brazil to 80 percent in the Legal Amazon<sup>2</sup>. Provisional regulation (*Medida Provisoria*) 2166-67 of 2001, the operative current rule, allows landholders to satisfy the requirement for one property through legal forest reserve located on another. In some cases, the off-site legal reserve may be owned by another party, opening the way to a market in legal reserve rights. (Note that the legal reserve is distinct from, and augments, the required areas of permanent preservation: forests along streams, on steep slopes, and on hilltops).

Many properties are out of compliance with the legal reserve obligation. Consequently, increased enforcement of the law has led to interest in policies that would permit trade of legal reserve obligations. These would allow landholders with insufficient legal reserve to purchase offsetting reserves at a different site. Such policies immediately raise the question of whether the scope of allowed offsets should be restricted to the same microbasin, or whether a wide scope should be allowed.

This paper uses a simulation model to examine the impacts of al-

---

<sup>2</sup> Landholders are additionally required to maintain vegetation in areas of permanent preservation, which include riverbanks and slopes.

ternative trading scopes on landholder compliance cost and on protection of areas of biodiversity interest. It uses data for the Brazilian state of Minas Gerais, an innovator in the use of economic instruments for conservation. It significantly extends an earlier paper (Chomitz 2004) through improved measures of land value, finer geographic resolution, and a wider range of impact measures. While we believe that the results are indicative, we stress that this paper is not intended as an authoritative analysis for Minas Gerais. However, we hope that with further refinements, the model presented here could allow policymakers and stakeholders in Minas Gerais, in Brazil, and beyond to explore options and issues in policy design.

The next section describes the current situation in Minas Gerais and Brazil. The third presents a stylized model illustrating the potential economic and environmental impacts of instituting alternative TDR schemes. The fourth section operationalizes the model. Section five presents our results with some discussion. A concluding section discusses policy implications, with some attention to institutional issues such as the transactions cost and competitiveness in a market for legal reserve obligations.

## **II. Brazilian and Minas Gerais context**

Since 1965, Brazilian landholders have been obliged to keep a specified proportion of each property under natural vegetation. Currently, this “legal forest reserve” requirement is 20 percent in southern states—where much forest cover has been lost—and is 80 percent in the forest-biome (e.g., non-savanna) areas of the Legal Amazon. Proprietors may use the legal reserve area for limited purposes, including sustainable extraction, but may not clear-cut it. The legal reserve requirement augments another regulation which places under “permanent protection” forested areas on hills or bordering streams and rivers.

Enforcing compliance with the legal reserve regulation is challenging in some southern states, where aggregate forest cover has been lost as a result of centuries of agricultural expansion, with much deforestation occurring in recent decades. In many locales, aggregate forest cover has dropped well below the 20 percent limit because of profitable op-

portunities to cultivate soybeans, vegetables, coffee, or other crops. Strict enforcement of the legal reserve requirement would be extremely expensive in these locales if landholders were required to abandon cropland or perennials. In heavily-worked properties with little remaining natural vegetation, the rate and quality of natural regeneration might be extremely slow. The isolated and poor-quality stands of regenerated vegetation would provide little biodiversity benefit. In other locales, some forest fragments persist. Often, these fragments represent the last vestiges of the Brazilian Atlantic Forest, a biome which is now reduced to about 7 percent of its original area and consequently harbors important biodiversity found nowhere else (Myers et al 2000). In Minas Gerais, the Atlantic Forest in 2000 had shrunk to 14.5% of its original area, with an annual deforestation rate of more than 0.5% (Fundação SOS Mata Atlântica and INPE 2002). These fragments represent the candidates for nuclei of a regenerated forest, because of the potential to serve as genetic sources for endangered plants and animals. Yet deforestation continues in these forest fragments because returns to agricultural conversion and timber extraction exceed the private benefits of forest maintenance. The legal reserve regulation, by itself, would permit deforestation down to the 20 percent limit, though special regulations restrict deforestation in the Atlantic Forest zone.

In short, strict property-by-property enforcement of the legal reserve limit might be ecologically and economically inefficient in already-deforested regions. Property-wise enforcement would impose large compliance costs on profitable farms, with little environmental gain. Property-wise enforcement would fail to provide incentives to maintain and expand the precious remaining areas of primary habitat.

Consequently, as the enforcement efforts were stepped up in the late 1990s, there was increased attention to mechanisms that would allow out-of-compliance landholders to meet their legal reserve limits offsite. In the municipality of Araguaí, in the state of Minas Gerais, local prosecutors in 1997 allowed groups of coffee farmers, with no remaining forest on their properties, to form a “condominium” to purchase and preserve a large forested property (Bernardes 1999). In 1998, a precursor of Medida Provisória 2166-67 permitted similar “compensation” procedures. The current regulation contains a provision that specifies

that compensation take place within the same microbasin if possible; and if not, in the same river basin and state<sup>3</sup>. In 2001, Goiás State issued implementing regulations allowing off-site legal reserve compensation. In 2002, Minas Gerais adopted a new state forest code, which allows for trading of legal reserve within a microbasin, but allows for some forms of legal reserve offset within a river basin. A more elaborate system of legal reserve enforcement and trading, SISLEG, was put in place in 2000 in the state of Paraná. Each property in the state was required to come into compliance with the legal reserve requirement by the end of 2018. The regulation permitted compliance through on-site regeneration, with forested property of the same owner, or with forested property of a different owner. Cross-property compensation was allowed within one of ten zones defined on the basis of river basins – a relatively wide scope. However, SISLEG was discontinued in 2003, after which compensation rules were made more restrictive.

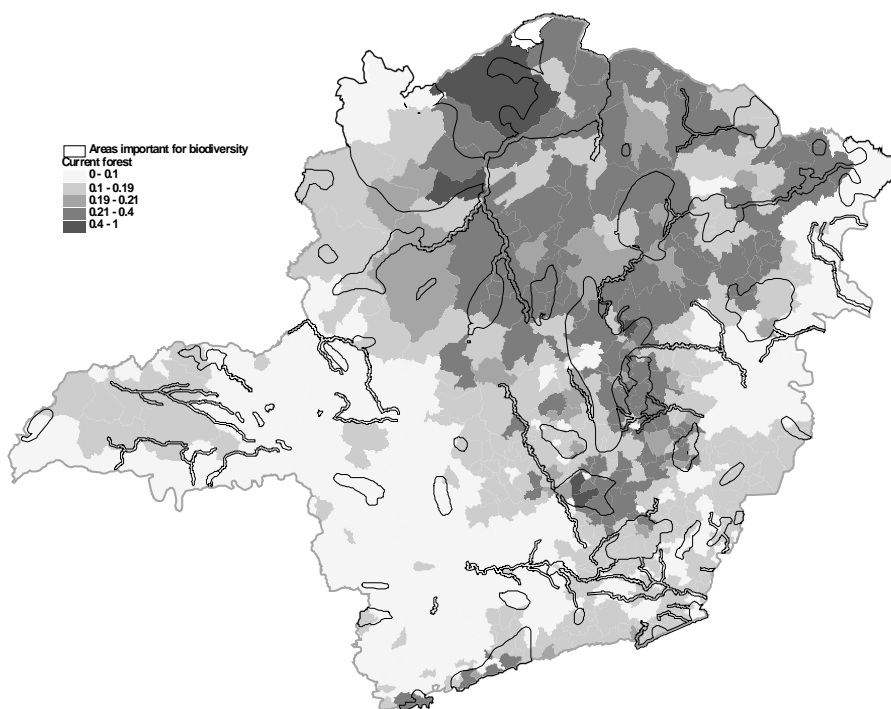
Forest reserve maintenance is particularly relevant to Minas Gerais. After suffering substantial forest loss, the Brazilian state of Minas Gerais has become an innovator in forest conservation. Over the past 50 years, forests in this large territory have been cleared to accommodate agricultural expansion and to fuel the state's charcoal-fired iron mills. Forest loss has been particularly severe in the Atlantic Forest region of the state, in the areas near the blast furnaces, and in the fertile "Triângulo" region in the west. In response, during the 1990's the state adopted two major conservation initiatives: a ban on the use of native forests for iron production, and a revenue-sharing system that rewarded municipalities for creating and maintaining protected areas. Nonetheless, parks and reserves constitute only 0.9% of the state's territory; another 2.3% of the territory is in multiple-use with some degree of environmental zoning (Costa et al., 1998). Management of legal forest reserves on private lands is therefore of great significance to the state's overall forest estate.

Figure 1 shows remaining forest cover on private agricultural lands, based on municipality-level tabulations from the agricultural census of 1995/96 (IBGE 1998). The state is divided into four biomes, the major ones being the Atlantic Forest to the east, the "cerrado" or savanna to

---

<sup>3</sup> *Medida Provisória* 2166-67, 24 August 2001 is the most recent version.

Figure 1: Forest Cover on private agricultural land, by municipality, 1996





the west, and the “caatinga” in the drier north (Figure 2). Remaining forest cover is below 20% in most of the Atlantic Forest biome and in the agroclimatically favorable portions of the cerrado, to the south and west. Higher forest cover remains in the more arid and remote regions of the cerrado and caatinga. Average land values (Figure 3) are, not surprisingly, inversely related to forest cover<sup>4</sup>.

### III. A simple model of the application of a TDR scheme to forest regeneration

In areas with inadequate forest cover, the TDR scheme is a device to encourage protection of existing forest and regeneration of new forest. To evaluate its efficiency and effectiveness in doing so, we introduce a highly stylized model. Initially, a landholder has a property with total area  $T$ , of which  $A_o$  is in agriculture and  $F_o$  in forest. Then, a regulation is introduced (or enforced) requiring the landholder to set aside a proportion  $\phi$  of her property as forest reserve, first from existing forest, and then if necessary by abandoning cultivated land and pasture to forest regrowth. Let  $g(x)$  represent the total value of the most valuable  $x$  hectares of cultivated land, and  $h(x)$  the total value of the most valuable  $x$  hectares of forest land. We assume that these values are exogenously determined by agricultural product markets. We make the drastic assumption that forest reserve has no private value due to restrictions on use<sup>5</sup>. Then compliance with the regulation costs the landholder:

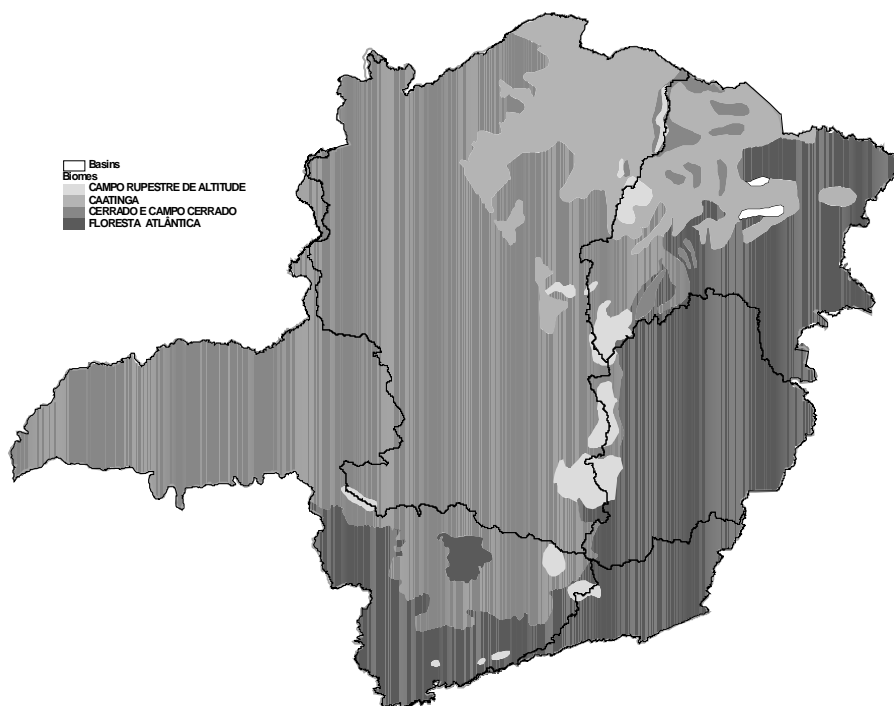
$$\begin{aligned} & h(F_o) - h(F_o - \phi T) \quad (F_o > \phi T) \\ & h(F_o) + [g(A_o) - g(A_o - (\phi T - F_o))] \quad (\phi T > F_o) \end{aligned}$$

Regrowth occurs entirely on properties with low initial forest cover. Because these properties are likely to be the most productive and heavily worked, compliance costs are high and the quality of regenerated forest

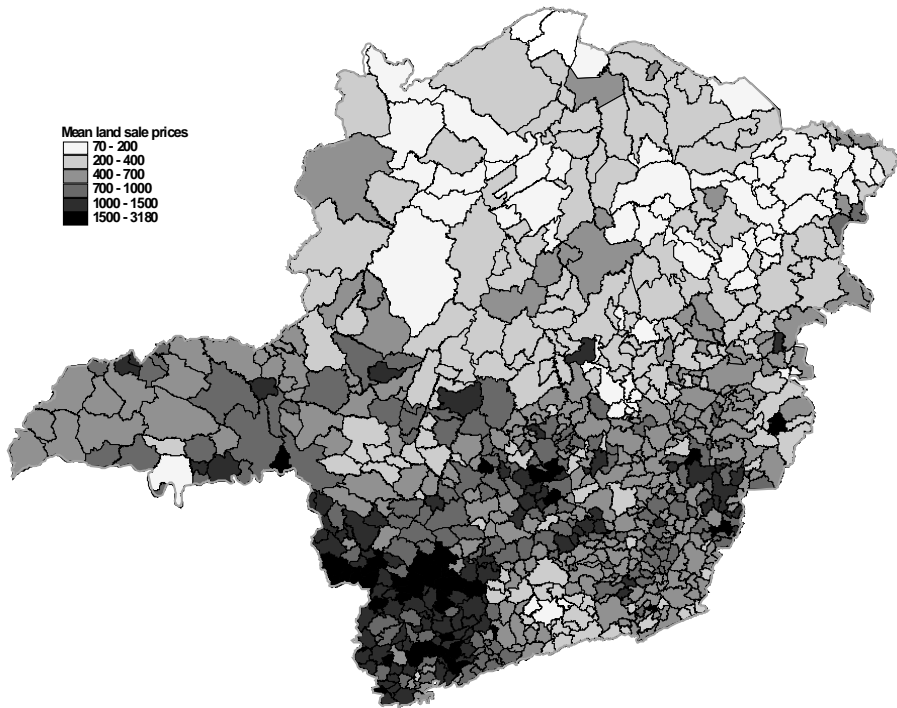
<sup>4</sup> This is true in part by construction. Mean land values are computed as the weighted average of prices according to land class, with forest often being the least valuable class.

<sup>5</sup> Think of the value of existing, non-reserved forest as representing the sum of option values for agricultural use and the value of standing timber if liquidated immediately. This value may be large relative to the present value of a stream of sustainable forest harvests, particularly from newly regenerating forest.

Figure 2. Biomes and major river basins



**Figure 3** Land values



likely to be low, due to compacted soil, nutrient depletion, and absence of seed sources<sup>6</sup>.

Now suppose that landholders are allowed to sell forest reserve rights attached to 'excess' forest (that is, forest areas in excess of  $\phi T$ ) and that those with forest reserve deficits may purchase these rights and apply them to their own reserve obligations. This creates a market for forest reserve with market-clearing price  $p$ . The landholder's problem is to satisfy the legal reserve requirement by choosing an agricultural abandonment area  $0 \leq a \leq A_0$ , an on-site forest set-aside area  $0 \leq f \leq F_0$  and a net legal reserve purchase area  $q$  ( $q < 0$  implies a sale of legal reserve rights) to maximize:

$$g(A_0 - a) + h(F_0 - f) - pq$$

subject to :

$$a + f + q \phi T \text{ and } A_0 + F_0 = T$$

The maximization problem will differ between forest-deficit and forest surplus properties, depending on some additional assumptions about allowable transactions.

*Forest-deficit properties.* First consider the response of properties where  $F_0 - \phi T < 0$ . Suppose for simplicity's sake (and reflecting likely legislation) that forest-deficit properties are required to place all existing forest under reserve ( $f = F_0$ ), and are not permitted to sell permits through forest generated by land abandonment. Their optimization problem is:

$$\text{choose } a \text{ to max } g(A_0 - a) - p \cdot (\phi T - a - F_0)$$

where the second term reflects the cost of purchasing permits, and the amount of permits is determined by the choice of  $a$ . When  $p < g'(A_0)$ , compliance is achieved entirely through purchase of permits. When  $p > g'(A_0 - (\phi T - F_0))$ , compliance is achieved entirely through abandonment of land. For intermediate values of  $p$  there is both abandonment and purchase, with  $g'(A_0 - a) = p$ .

*Forest surplus properties.* If forest surplus properties are not permitted to sell permits based on agricultural land abandonment, then they choose  $f$  to maximize:

$$h(F_0 - f) + p \cdot (f - \phi T)$$

---

<sup>6</sup> This generalization may not apply to areas under perennial crops or plantations, some of which may revert easily to forest if abandoned.

where the second term reflects the potential revenue from sale of 'excess' reserve. Forest-surplus properties will convert all of their excess forest to farmland if  $p < h'(F_0 - \phi T)$ . They will sell all their surplus equal to  $F_0 - \phi T$  if  $p > h'(0)$ . For intermediate values of  $p$ , they sell  $F_0 > f > \phi T$  satisfying  $p = h'(F_0 - f)$ . Whether sale of forest reserve rights constitutes an environmental gain depends on one's evaluation of the likelihood that this land would otherwise have eventually been converted or degraded in the future, and how irreversible that action would be. Positive land values for forests suggest that the option of future conversion is privately valuable, so that retirement of this option may be socially valuable if environmental benefits are taken into account.

If properties are allowed to sell permits based on agricultural land abandonment, then they choose both  $f$  and  $a$  to maximize

$$g(A_0 - a) + h(F_0 - f) - p(\phi T - a + f)$$

where there will be interior or corner solutions similar to those of the previous two cases. Here there could be an environmental gain if regeneration on these plots is vigorous and biodiverse due to the proximity of seed sources.

This simple model suggests that the environmental and economic impacts of a TDR scheme depend on whether land values and land cover vary substantially within areas deemed biologically homogeneous. Suppose, for instance, that agroclimatic conditions determine both land value and biodiversity. Areas favorable to agriculture will have distinct biota, but will tend to have low remaining forest cover and high land value. Demand for reserve rights will be high, but few properties will have surplus forest with which to supply that demand. Suppose on the other hand that land values are determined mainly by road access, and that there is substantial variation in road access within biologically homogeneous areas. In this case there are substantial gains possible from trade.

Environmental impacts also depend greatly on how the new scheme treats existing forest. If conversion of existing forest is allowed, especially in forest-deficit areas, then the TDR scheme could lead to loss of rare old-growth forests and its substitution by lower-quality regenerated forest.

## IV. Simulation model

### Data

**Land value.** Land value data was kindly provided by Fundação Getúlio Vargas. These data, collected semiannually, represent typical land sales transactions values by municipality for rural land sales, classified by land cover: crops, pasture, fields (*campo*) and forest. We chose second semester 1996 as the base period. Where observations were missing for this period, values were imputed using data from other periods, adjusted by average interperiod price change. Where data were missing for all periods, values were imputed from the average of neighboring municipalities. The use of land cover as a proxy for land value can be justified by reference to Chomitz et al. (2005), who estimated a hedonic equation for land value using property level transactions data for an Atlantic Forest area of south Bahia. They found a very strong relationship between land cover and land value<sup>7</sup>.

**Land cover.** The 1995-1996 Censo Agropecuário (Agricultural Census) (IBGE 1998) breaks down land use within agricultural establishments into the following categories: natural forest, planted forest, perennials, annuals, planted pasture, native pasture, short fallow, productive unutilized (probably long fallow), and nonproductive (e.g., rocks, water, paved areas). IBGE kindly provided us with these data at the level of the census tract; there are 8123 census tracts in 756 municipalities. To link land use data with land value data, we adopted the following rough concordance:

Censo Agropecuario Classification	FGV Classification
natural forest	forest ( <i>matas</i> )
perennials, annuals, planted forest	crops ( <i>lavouras</i> )
planted pasture, short fallow, productive non-utilized	Pasture
natural pasture	<i>Campo</i>

**Biodiversity priority areas.** Biodiversity priority areas for the state were identified through a process described in Costa et al. (1998). A fifteen-month process involving 121 experts identified conservation priority

---

<sup>7</sup> Chomitz *et al* used the hedonic equation to impute a land value surface for south Bahia. Equivalent data were not available for the current exercise, but we do not believe that more refined land value data would have made a qualitative difference in the results.

areas on the basis of species richness, species endemism and distribution, threat, and presence of special biological characteristics. Priority maps were made for seven taxonomic groups and combined into a summary map (at a scale of 1:1,700,000) indicating four degrees of importance.

### ***Demand And Supply At The Micro Level***

Here we adapt the theoretical model of section 3 to the available data. The unit of observation is the census tract. Census tract  $i$  in município  $j$  has  $T_{ij}$  total hectares in agricultural establishments (excluding unproductive land), of which  $F_{ij}$  is in forest,  $A_{ij}$  in crops,  $C_{ij}$  in native pasture, and  $D_{ij}$  in planted pasture. We assume that, within each of these land uses, land is of homogenous quality within município  $j$  and has value per hectare  $V_{kj}$ , where  $k$  indexes land use. We assume that properties within the census tract can pool their forest holdings for the purpose of satisfying the legal reserve requirement. If  $f_{ij} = F_{ij} / T_{ij} < 0.2$ , then the unit is out of compliance by a gap  $G = 0.2 T_{ij} - F_{ij}$ . Within the census tract, it can come into compliance either by purchasing legal reserve rights or by abandoning productive land to forest regrowth.<sup>8</sup> It chooses the least costly strategy, abandoning successively higher cost land until the opportunity cost of abandonment is the same as the price of legal reserve. We will assume that out-of-compliance properties are not permitted to use natural regeneration to create “excess” legal reserve for sale.

Let  $q_{ij}(p)$  be the cumulative non-forest area in tract  $ij$  with value per hectare less than  $p$ . This distribution is approximated by constructing a step function based on  $A_{ij}$ ,  $C_{ij}$ , and  $D_{ij}$  together with their corresponding average values  $V_{aj}$ ,  $V_{cj}$ ,  $V_{dj}$ . For instance, where  $V_{cj} < V_{dj} < V_{aj}$ , the inverse of  $q(\cdot)$  is given by:

$$\begin{aligned} p &= V_{cj} & [0 < q < C_{ij}] \\ p &= V_{dj} & [C_{ij} < q < C_{ij} + D_{ij}] \\ p &= V_{aj} & [C_{ij} + D_{ij} < q < C_{ij} + D_{ij} + A_{ij}] \end{aligned}$$

This crude approximation assumes that heterogeneity in land quality among farms within a municipality is reflected in different allocations

---

<sup>8</sup> We assume that such abandonment satisfies regulations, regardless of the actual quality of subsequent natural regeneration.

of land use rather than in different average valuations of land devoted to particular land uses.

The tract's demand for legal reserve at price  $p$  is  $d_{ij}(p) = \max[0, G - q_{ij}(p)]$ . Where  $f_{ij} > 0.2$  the census tract is a potential supplier of legal reserve. The supply function is simply  $s_{ij}(p) = 0$ , if  $p < V_{ff}$ , and equals  $F_{ij} - 0.2T$ , if  $p > V_{ff}$ .

In areas where the aggregate proportion of native forest falls below 20 percent, long-term ecosystem viability may depend on expanding the size of forest patches through natural regeneration of adjacent areas. It may therefore be desirable to allow properties (census tracts) that already have substantial forest cover to supply additional forest reserve through abandonment and regeneration. Supposing that this option is limited to census tracts with  $f_{ij} > 0.2$ , the additional supply is given by  $s_{ij}^{add}(p) = q_{ij}(p)$ .

### ***Solving For Market Equilibrium And Its Impacts***

Aggregation of  $s_{ij}(p)$  and  $d_{ij}(p)$  over any specified trading ambit yields estimates of the aggregate supply and demand curves  $S(p)$  and  $D(p)$ . The calculated supply and demand functions are biased approximations of the actual functions. The crude imputation of land values used here does not take account of heterogeneity of land quality. Nor does it allow for the likely relationship between land cover and land value. Areas with relatively high forest cover are likely to be areas where agricultural potential, and hence land values, are low. (It is for this reason that the forest is still standing.) Hence the derived supply and demand functions are likely to differ systematically from the true functions, with less supply at low prices and less demand at high prices. This bias should be kept in mind when assessing model results.

Equating supply and demand yields an equilibrium price  $p^*$  and quantity  $Q^*$ . Substitution of equilibrium price into a census tract's supply and demand functions allows computation of legal reserve bought and sold, expenditures and revenues related to these transactions, of forest area newly-protected as legal reserve, and of areas abandoned to regeneration.

Economic and environmental effects are assessed relative to an assumed 'command-and-control' baseline scenario. In the baseline case, the legal reserve requirement is enforced on a property-wise basis with-



out trading. In the baseline, we assume that areas with more than 20 percent forest eventually reduce forest cover to the legal limit (except in the Atlantic Forest biome where deforestation is forbidden),<sup>9</sup> and that areas that are out of compliance use unassisted natural regrowth on abandoned land to come into compliance.

The reduction in compliance cost (relative to property-wise enforcement of the legal reserve requirement) is given by:

$$\int_{Q=0}^{Q^*} D^{-1}(Q)dQ - p^*$$

Rents earned by the suppliers of legal reserve are given by:

$$p^* - \int_{Q=0}^{Q^*} S^{-1}(Q)dQ$$

The hypothetical TDR program potentially benefits the environment by encouraging the conservation and expansion of forest fragments in forest-rich locales. In the baseline scenario, these ecologically valuable areas are allowed to degrade down to the 20 percent limit, while areas that are already severely degraded are allowed to present very poor-quality regeneration to fulfill their reserve requirement. (The regeneration in these areas is likely to be poor because seed sources are lacking and the land has been heavily worked). In the program scenario, standing forest is conserved, and regrowth is encouraged near the forest, where seed sources are plentiful, and the opportunity to reconnect forest fragments is greater. This should lead to higher biomass and carbon densities and to ecosystems better to support minimum viable populations of flora and fauna.

To compute biodiversity impacts, municipality-level impacts were proportionately allocated to biodiversity priority areas that overlapped with the municipality (Unfortunately the census-tract level data was not spatially referenced.)

---

<sup>9</sup> Despite this law 2.8% of the remaining Atlantic Forest in Minas Gerais was deforested over 1995-2000 according to a remote sensing-based study (SOS Mata Atlântica and Instituto Nacional de Pesquisas Espaciais, 2002)

## V. Results

Table 1 compares the impacts of alternative enforcement scenarios, relative to a baseline of no enforcement of the forest reserve regulation. In the command and control scenario, no trading of forest reserve permits is allowed. Successive scenarios allow trading within expanding geographic scopes: municipality, biome X river basin combination, biome. Within each of the geographic trading regimes, two sub-scenarios are simulated. In ‘forest only’, forest surplus properties may sell permits based only on existing ‘excess’ forest. In the ‘forest first’ scenarios, forest surplus properties may also sell permits from abandonment and regrowth on agricultural plots, but only after selling all available permits based on standing forest.

In the command and control scenario, out-of-compliance landholders come into compliance by abandoning 3,146,000 hectares of farmland, at an opportunity cost of R\$1.47 billion. All of this is assumed to become low quality regeneration. The municipality-level trading scenarios offer negligible reductions in total compliance cost, as within-municipality trading opportunities are few. (This reflects to some degree the assumption of homogenous land prices, for a given land use type, within municipalities, but also the observed infrequency of coexisting forest-deficit and forest-surplus census tracts within the same municipality.) For the biome-basin scenario, however, trading makes a difference. In the forest-only sub-scenario, total compliance costs decline by R\$256 million relative to the command and control scenario. Forest-deficit properties capture about 45% of this saving. The rest goes to forest-surplus properties, which sell permits based on 346,000 forest hectares placed under new protection, and 250,000 hectares already protected (in theory) by regulations forbidding Atlantic Forest deforestation. In the forest-first sub-scenario of biome-basin trading, there is a further reduction of R\$220 million in the social costs of compliance. The bulk of this accrues to the forest-deficit landholders, who now abandon only 1,745,000 hectares, purchasing permits from 977 thousand hectares of regenerating forest in favorable areas. Compared to the forest-only sub-scenario, new protection of existing forest drops from 346 thousand to 175 thousand hectares.

In the final pair of scenarios, trading is permitted throughout a biome.

**Table 1.** Economic and environmental impacts of alternative scenarios

	Command & control	Municipality		Biome-basin		Biome	
		Forest only	Forest first	Forest only	Forest first	Forest only	Forest first
Number of trading scopes	NA	756		15		4	
Forest accounting	(Thousands of hectares. Baseline is 4.837 million hectares.)						
Abandoned in deficit forest areas	3,146	3,024	2,861	2,551	1,745	2,441	904
Leased in from surplus forest areas, of which:	0	122	285	596	1,401	706	2,243
- in forest but not currently protected	0	51	40	346	175	455	275
- non-forest land abandoned	0	0	174	0	977	0	1,717
- in forest and already protected	0	71	71	250	250	251	251
Total existing forest protected	4,837	4,888	4,877	5,183	5,012	5,292	5,112
Forest and higher quality regeneration	4,837	4,888	5,051	5,183	5,989	5,292	6,829
Forest and all regeneration	7,983	7,912	7,912	7,734	7,734	7,733	7,733
Biodiversity area preservation	(Thousands of hectares. Baseline is 1.075 million hectares.)						
New, by abandonment in forest deficit areas	486	453	403	384	241	423	235
New, by leasing out in forest surplus areas	0	33	82	182	427	215	649
Total	1,561	1,561	1,561	1,642	1,743	1,713	1,959
Economic Values	(000s R\$)						
Opportunity cost of abandoned land in forest-deficit tracts	1,469,252	1,426,453	1,359,157	1,147,322	797,980	813,857	131,146
Expenditures on permits	0	28,387	91,010	206,439	376,571	469,274	478,925
Profits from sales of permits	0	15,242	26,568	141,249	182,067	354,773	206,107
Reduction in compliance costs for forest-deficit tracts	0	14,413	19,094	114,432	293,642	184,791	859,760
Total surplus	0	29,655	45,663	255,681	475,709	539,565	1,065,866

Notes: a) By law, property owners are required to leave 20 percent of their land in forest. Also, trees are not allowed to be cut in the Atlantic Forest biome. The baseline forest is calculated as the lesser of existing forest and 20 percent of productive land; except in the Atlantic Forest biome, where it is equal to the existing forest.

(b) “Abandoned” refers to any land that was not in forest that is allowed to regenerate naturally to forest. We assume “strong regeneration” occurs in areas that have at least 20 percent of the potentially productive land currently in forest (“forest surplus areas”). Areas with less than 20 percent of the land in forest are called “forest deficit areas”.

(c) Under the trading regimes, the supply price of forested land in the Atlantic Forest biome is set to 0.

(d) “In forest and already protected” represents forested land in the Atlantic Forest biome that is above the 20 percent required in other biomes. We allow sales of permits based on this forest.

(e) Biodiversity area preserved is calculated by multiplying the area of abandonment (of deforested land) or protection of forested land, times the proportion of the municipality which is in a biodiversity priority area. The biodiversity area baseline is calculated from the baseline forest area.

f) “Lost value from abandoning land” is computed as the area under the demand curve: the value of land in forest deficit areas.

The forest-only variant shows relatively little difference in the land cover mix from biome-basin trading: newly protected forest increases in area from 346 thousand to 455 thousand hectares. But by exploiting cross-basin (but within-biome) differences in land value, the biome-wide trading scenario reduces costs by an additional R\$284 million compared to biome-basin. Finally, compliance costs are drastically reduced in the final scenario, the forest-first variant of biome-wide trading. Compared to the command-and-control scenario, total opportunity costs are reduced by over R\$1 billion, most of which accrues to forest-deficit landholders. The savings accompanies a massive shift of 1.7 million hectares from land under low-quality regeneration to land under high-quality regeneration. Compared to the forest-only variant of biome-wide trading, this environmental benefit is slightly offset by a decline in new protection of standing forest, from 455 hectares to 275 thousand hectares. Forest-surplus landholders realize reduced aggregate profits from permit sales in the forest-first variant, despite the much greater hectareage of permits delivered.

Figure 4 summarizes the main results, showing only the forest-first variants. Expansion of the trading ambit results in substantial social savings; both forest-deficit and forest-surplus landholders benefit as the ambit expands. Wider trading also results in a better overall quality of new additions to the forest reserve system. Under command-and-control, the new reserves are entirely composed of low-quality regeneration. Much of this area will regenerate weakly, if at all, yielding little biodiversity or carbon sequestration benefit. Under biome-wide trading, low-quality regeneration is reduced to just 29% of the expanded reserve area. This almost certainly implies some gain in carbon sequestration and improvement in biodiversity-friendly habitat. But does expansion of the trading ambit lead to poor targeting or poor geographical balance in the biodiversity benefits?

While enforcement of command-and-control protects an additional 486 thousand hectares of poor-quality regenerating land in biodiversity priority areas, biome-basin trading protects 668 thousand new hectares in these areas (of which 427 thousand is standing forest or high quality regeneration) and biome-wide trading protects 884 thousand new hectares in biodiversity priority areas, mostly high-quality. Figures 5 and 6 show how the geographic distribution of high quality forest (i.e., existing, and high quality regeneration) differs between biome-basin trading, and

**Figure 4.** Summary of Economic and Environmental Impacts of Alternative Trading Scopes

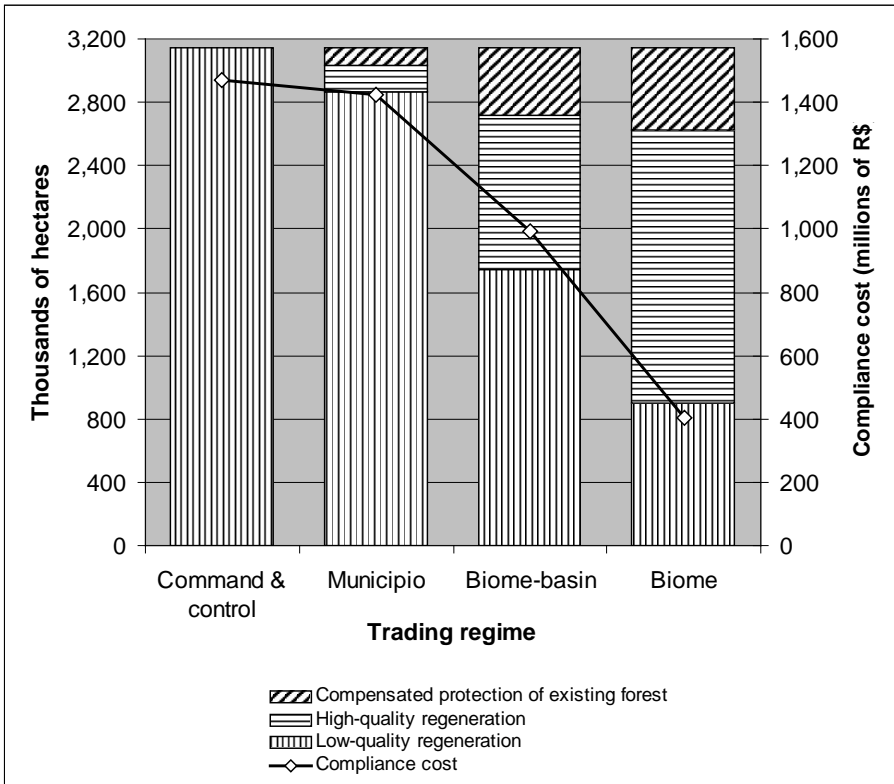


Figure 5. “Good-quality” forest cover with biome-basin trading

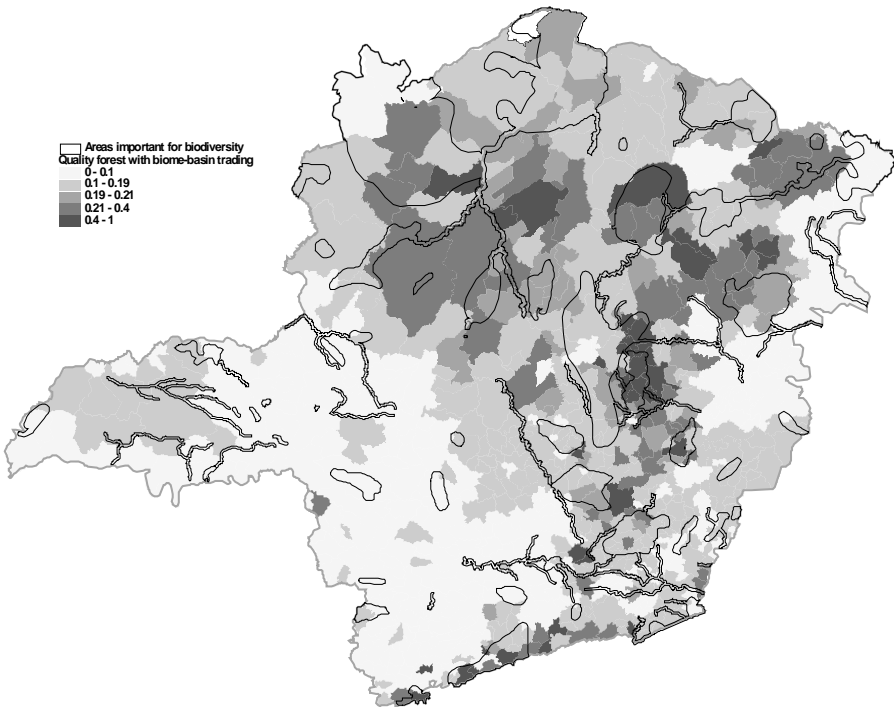
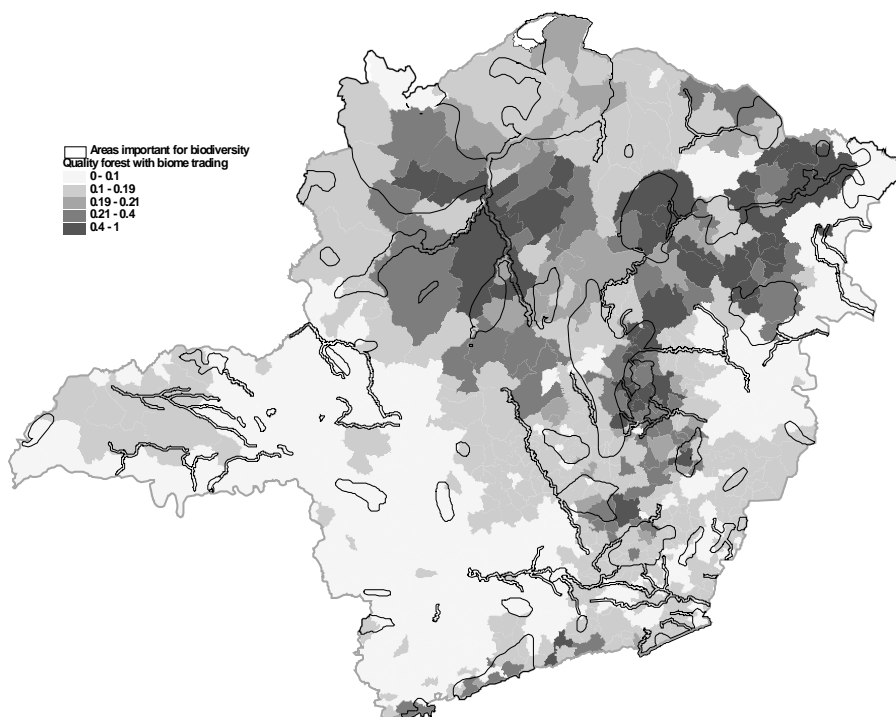


Figure 6. “Good-quality” forest cover with biome-wide trading





biome-wide trading. Biome-wide trading has large beneficial impacts on forest extent in the north and east of the state, both inside and outside biodiversity priority areas. Biome-basin trading yields superior results only in some small corners of the southwestern portion of the state. In this fertile agricultural area, permit prices soar to over R\$1100 per hectare when trading is restricted to the biome-basin combination, eliciting some supply from the few remaining forest-surplus tracts.

## VI. Discussion and conclusions

The simulation results show that a tradeable legal reserve program could dramatically reduce the opportunity costs of protecting and regenerating a desired aggregate level of forest cover, when the trading scope extends beyond the strictly local area (e.g. municipality or micro-watershed). Trading beyond the local level also results in superior environmental results, including greater protection of existing forest remnants, and encouragement of higher-quality regeneration. These outcomes should be better both for biodiversity and for carbon sequestration. These results may be generalized to other forest-poor areas, since they follow from the strong association between favorable agroclimatic and market access conditions, high prior levels of forest conversion, and high land values, and high degrees of spatial autocorrelation in all these variables (Chomitz *et al* 2004).

Reduction in opportunity costs is important not just from the viewpoint of economic efficiency, but perhaps more importantly, from a political economy viewpoint. Much of the cost reductions would potentially accrue to large landholders in rich agricultural regions. But benefits also accrue to landholders in less prosperous regions who have protected their forests, and to agricultural workers. Together this builds a powerful constituency for instituting the program. Conversely, there would be little support for a command-and-control program that imposed costs on these stakeholder groups.

How far trading scopes should be extended? There cannot be a definitive answer, as the tradeoffs will be sensitive to the spatial covariance of biological distinctiveness and agricultural attractiveness – and to decisions about how to share the costs of conservation. But the results shown here suggest that wider ambits deserve serious attention – at least in the context where

forests are already depleted in high-market-value areas. Here the wider ambit offers much greater aggregate environmental benefits and much greater social savings. The savings are large enough that a small portion could be used to finance targeted interventions (such as purchase of land for parks) in ecosystems that might otherwise be underrepresented. Similar considerations apply when considering whether to allow permit supply only from standing forest, or also from regeneration. Similarly, extending the trading regime to allow supply of permits from high-quality regeneration ‘crowds out’ a small amount of protection of standing forest, but stimulates the creation of a much greater extent of restored forest, while realizing considerable savings. Again, in principle, some of the savings could be devoted to targeted acquisition of standing forest in underrepresented ecosystems.

Could such a system work in practice? Practical operation of a trading system requires a transparent, trustworthy institution that minimizes low transactions and monitoring costs, and avoids collusion or market manipulation. Market manipulation is a worry especially for markets with small ambits, where buyers may be few but powerful in both political and economic spheres. Transactions costs are potentially a problem if buyers must seek out sellers in a thin market, and if buyers retain liability for compliance on a distant property. Monitoring and enforcement costs could be high if tens or hundreds of thousands of properties have to be inspected.

Here we sketch an approach to overcoming these problems. First, the problems of thin or imperfect markets represent another argument against small ambits. Large ambits bring in larger numbers of participants, reducing opportunities for collusion and increasing market liquidity. Second, we assume that each landholder is responsible for the integrity of all legal reserve services provided on-site, including services sold to others. We assume that the state government will monitor compliance – as it would have to, in any case, under a command and control system. Each landholder reports the area of owned property, the area of legal reserve maintained on site, the amount of legal reserve sold, and the amount of legal reserve purchased. The state inspects all very large properties, which are few in number but contain a large proportion of all area. The state does randomized audits of self-reported data from smaller properties, with penalties

for false reporting. This minimizes monitoring costs. Third, since within-ambit markets deal in a homogeneous commodity, auctions would be an efficient way to transfer legal reserve rights. This would be especially apt if the main reason for the market is to allow landowners with insufficient forest to come into compliance. Buyers and sellers would submit sealed bids to a central clearinghouse, which would check validity of offered legal reserve against the official state records – presumed to be computerized. The clearinghouse would compute the market-clearing price, exactly in the manner used in this paper’s simulation, debit the sellers’ holdings, and credit the buyers’ holdings in the state database. This obviates the need for bilateral transactions and greatly reduces transactions costs.

Are such programs feasible in places that lack Brazil’s tradition of a quantitative conservation requirement for every landholder? Certainly the existence of that tradition makes it easier to reach consensus on an initial allocation of permits. But it may also be possible to agree on such a rule in areas where forests have been widely cut despite legal prohibitions; or in forest-rich regions where publicly owned lands are only now coming under development pressure. In any case, the evolution of TDR-like systems in Brazil alone is reason enough for serious policy and research attention to the issue. Refinement of the model presented here – with finer spatial detail on land values, more realistic modeling of ‘business as usual’ land use trends, and ecologically-informed modeling of the vigor of natural regeneration -- could help to inform public discussion and decisions on legal reserve trading and related policies.

## VII. References

Bernardes, Aline T. 1999. “Some Mechanisms for Biodiversity Protection in Brazil, with Emphasis on their Application in the State of Minas Gerais”. Paper prepared for the Brazil Global Overlay Project, Development Research Group, World Bank.

Costa, Cláudia Maria Rocha, Gisela Herrmann, Cássio Soares Martins, Lívia Vanucci Lins, and Ivana Reis Lamas. 1998. *Biodiversidade em Minas Gerais: Um Atlas Para sua Conservação*. Belo Horizonte: Fundação Biodiversitas.

Chomitz, Kenneth M. 2004 “Transferable Development Rights and Forest Protection: An Exploratory Analysis”. *International Regional Science Review* 27(3):348-373.

Chomitz, Kenneth M., Keith Alger, Timothy S. Thomas, Heloisa Orlando, and Paulo Vila Nova. 2005 “Opportunity costs of conservation in a biodiversity hotspot: the case of southern Bahia” *Environment and Development Economics* 10(3): 293-312

Fundação SOS Mata Atlântica and Instituto Nacional Pesquisas de Epaciais. 2002. *Atlas Dos Remanescentes Florestais Da Mata Atlântica Período 1995-2000*. São Paulo: Fundação SOS Mata Atlântica.

IBGE 1998. *Censo Agropecuario: Minas Gerais*. Rio de Janeiro: IBGE.

Johnston, R. and Madison, M. “From landmarks to landscapes: A review of current practices in the transfer of development rights”. *Journal of the American Planning Association*, 63(3): 365-378, 1997.

Myers, Norman, Russell A. Mittermeier, Cristina G. Mittermeier, Gustavo A. B. da Fonseca and Jennifer Kent. 2000. “Biodiversity hotspots for conservation priorities”. *Nature* 403:853-858.

National Research Council 2001. *Compensating for Wetland Losses under the Clean Water Act*. Washington DC: National Academy Press.

Pagiola, Stefano, Joshua Bishop, and Natasha Landell-Mills. 2002. *Selling Forest Environmental Services: Market-based Mechanisms for Conservation and Development*. London: Earthscan.

Soulé, Michael E. and Sanjayan, M. A. 1998. “Conservation Targets: Do They Help?” *Science* 279: 2060-2061

Whigham, Dennis F. 1998. “Ecological issues related to wetland preservation, restoration, creation, and assessment.” *Science of the Total Environment* 240, 31-40.

*Recebido em abril de 2005 e revisto em setembro de 2005*