

**Figure 3** Histopathological examination: cystic cavity coated by basal cuboidal cells and columnar apocrine cells (Hematoxylin & eosin,  $\times 400$ ).

### Financial support

None declared.

### Authors' contribution

Giovanna de Araujo Horcel: Conception and planning of the study; composition of the manuscript.

Juliana Milhomem: Conception and planning of the study.

Samuel Henrique Mandelbaum: Critical review of the literature; critical review of the manuscript.

Rodrigo Ieiri: Participation in the design of the study.

### Conflicts of interest

None declared.

### References

1. Karg E, Korom I, Varga E, Ban G, Turi S. Congenital syringocystadenoma papilliferum. *Pediatr Dermatol.* 2008;25:132–3.
2. Townsend TC, Bowen AR, Nobuhara KK. Syringocystadenoma papilliferum: an unusual cutaneous lesion in a pediatric patient. *J Pediatr.* 2004;145:131–3.
3. Bruno CB, Cordeiro FN, Soares FES, Takano GHS, Mendes LST. Aspectos dermatoscópicos doiringocistoadenoma papilífero associado a nevo sebáceo. *An Bras Dermatol.* 2011;86:1213–6.
4. Jalkh AP, Menezes AC, Gadelha A. Siringocistoadenoma papilífero localizado na coxa. *Surg Cosmet Dermatol.* 2013;5:273–5.
5. Einecke YS, Pinto EB, Silveira SO, Santos MA, Mendes AM, Carneiro FR. Siringocistoadenoma papilífero congênito. *Rev SPDV.* 2018;76:79–82.

Giovanna de Araujo Horcel \*, Juliana Milhomem , Samuel Henrique Mandelbaum , Rodrigo Ieiri 

*Dermatology Service, Santa Casa de São José dos Campos, São José dos Campos, São Paulo, SP, Brazil*

Corresponding author.

E-mail: [giohorcel@hotmail.com](mailto:giohorcel@hotmail.com) (G.A. Horcel).

Received 30 August 2018; accepted 11 February 2019

<https://doi.org/10.1016/j.abd.2019.02.011>

0365-0596/ © 2019 Published by Elsevier España, S.L.U. on behalf of Sociedade Brasileira de Dermatologia. This is an open access article under the CC BY license (<http://creativecommons.org/licenses/by/4.0/>).

## Multiple adult xanthogranuloma<sup>☆,☆☆</sup>



Dear Editor,

Xanthogranuloma (XG) is a normolipemic non-Langerhans cell histiocytosis (NLCH) most commonly seen in childhood and generally designed as juvenile xanthogranuloma (JXG). Infrequently, XG can occur in adulthood. Both in adults and children, XG usually presents as a solitary lesion. Multiple lesions are rare in JXG and exceptional in adults. The authors report a case of multiple adult xanthogranuloma (MAXG) of the face, neck, trunk, abdomen, and axillae, with no extracutaneous involvement and no association with hematologic disease.

A 38-year-old female, with no relevant personal or family history of the disease, was seen in October 2016 with multiple papules on her skin, which she first noticed 18 months

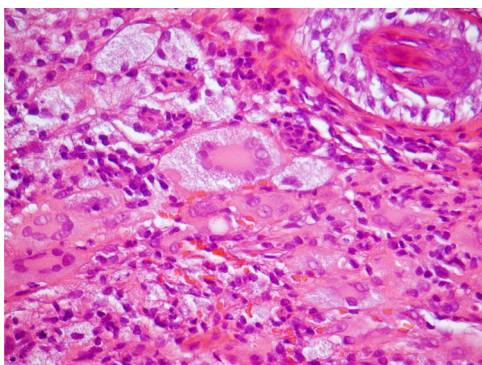
before. Dermatologic examination showed more than 100 yellowish-brown, smooth, firm papules with diameters of 1–3 mm on the face, neck, thorax, abdomen, and axillae (Fig. 1), two larger elements, standing out in the outer corner of the right eye and in the homolateral nasogenian groove. The lesions were asymptomatic and the general



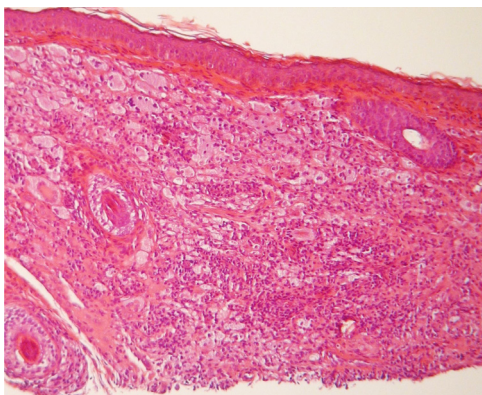
**Figure 1** Multiple xanthogranulomas. Detail of yellowish-brown, smooth, firm papules with diameters of 1–3 mm, asymptomatic, located on the face.

☆ How to cite this article: Almeida RC, Tellechea O, Pereira MP, Mascarenhas RCC. Multiple adult xanthogranuloma. *An Bras Dermatol.* 2020;95:113–5.

☆☆ Study conducted at the Hospital Distrital da Figueira da Foz, Figueira da Foz, Portugal.



**Figure 2** Infiltration circumscribed of the dermis by xanthomized histiocytes and multinucleated Touton giant cells (Hematoxylin & eosin,  $\times 400$ ).



**Figure 3** Diffuse histiocytic proliferation in the superficial and deep dermis associated with lymphocytic infiltrate and with multinucleated Touton giant cells (Hematoxylin & eosin,  $\times 100$ ).

physical examination (including ophthalmologic, cardiopulmonary, and neurologic) was normal.

The diagnostic hypotheses of syringomas, sarcoidosis, xanthomas, and histiocytosis were considered, and two lesions were excised for histopathologic evaluation. This disclosed, in both specimens, a circumscribed dense dermal cellular infiltrate composed of large histiocytes, mostly exhibiting xanthomized cytoplasm, accompanied by multinucleated giant cells, including some of the Touton type. Interspersed inflammatory cells were also present, mostly small lymphocytes with occasional neutrophils and some eosinophils (Figs. 2 and 3). Immunohistochemical evaluation documented absence of S100 protein, and CD1a immunoreactivity and diffuse CD68 positivity, supporting the diagnosis of XG.

General laboratorial and imaging evaluation (including  $\beta 2$  microglobulin, serum protein electrophoresis, skeletal and thorax X-ray, and abdominopelvic echography) showed no abnormalities. On the basis of the clinico-laboratorial and imaging findings, the diagnosis of MAXG was obtained. Ablation of the larger and cosmetically more-disturbing lesions by CO<sub>2</sub> laser or electrosurgery was performed, with good results. During the follow-up period of almost two years, the untreated cutaneous lesions persisted, with no development of extracutaneous lesions nor hematologic alterations.

XG is the most common type of NLCH.<sup>1</sup> The presentation of XG in adulthood is infrequent, occurring generally in the 3rd or 4th decades of life, without gender predominance.<sup>2</sup> As in JXG, most cases of adult XG manifest as a solitary papule or nodule on the face.<sup>3</sup> The occurrence of multiple XG lesions in adults is rare. MAXG is defined by more than five XGs in patients over 14 years of age.<sup>2</sup> According to these criteria, 118 cases of MAXG have been reported from 1969 to 2004.<sup>3</sup> The etiopathogenesis of MAXG is unknown.<sup>3</sup>

JXG and MAXG exhibit identical histologic and immunohistochemical findings.<sup>1</sup> Mature lesions show, as in the present case, a circumscribed nodular dermal proliferation composed of xanthomized histiocytes, characteristically accompanied by Touton multinucleated cells.<sup>1,4</sup> The histiocytic nature of the proliferation is confirmed by their CD68 positivity and absence of S100 protein, as well as CD1a immunoreactivity, with variable expression of factor XIIIa.<sup>4,5</sup> Nevertheless, these microscopic and immunochemical findings are not pathognomonic for XG and, in the present patient, other forms of adult NLCH presenting with multiple lesions needed to be excluded, namely Erdheim-Chester disease (ECD), as well as eruptive disseminated histiocytoma (EDG), and more remotely, disseminated xanthoma (DX) and multicentric reticulohistiocytosis (RM).<sup>4,5</sup>

The absence of skeletal abnormalities allowed to exclude ECD. In EDG, the lesions do not contain Touton cells. These can, however, occur in DX, but in the present patient no linear periflexural lesions, which characterize DX, were present. In RM cutaneous lesions are acraly located, accompanied by arthropathy and microscopically characterized by large multinucleated ground-glass cells, aspects absent in the present case.<sup>4,5</sup>

Clinically, MAXG presents as yellow-orange or brownish papules and/or nodules distributed on the trunk, face, neck, and less frequently, the limbs. More than 10 lesions are present in only about 6% of the reported cases.

In contrast with JXG, in which ocular and, less frequently, other organ involvement may occur, MAXG does not seem to evolve with extracutaneous histiocytic infiltration. Accordingly, exhaustive systemic investigation is not recommended in every patient. Nevertheless, as in JXG, MAXG can be a marker of malignant blood disease, a possibility that should be considered whenever B symptoms and/or alterations of the electrophoretic proteinogram occur.<sup>3-5</sup> These, as well as full blood tests, were systematically absent/negative in the present patient during the almost two years of follow-up.

As spontaneous regression of the lesions in MAXG is less probable than in JXG, surgical excision, electrosurgery, ablation by CO<sub>2</sub> laser, or systemic retinoids – namely isotretinoin – have been recommended as treatments whenever lesions are numerous, cause discomfort, or are unesthetic. In the present patient, a female of child-bearing age, the larger papules were treated iteratively with CO<sub>2</sub> laser or electrosurgery, with a good cosmetic result.

In conclusion, MAXG is a rare type of adult normolipemic NLCH, whose significance is insufficiently known, and is occasionally associated with hematologic malignancy that occur simultaneously, preceded by or following the diagno-

sis of this histiocytosis,<sup>3</sup> thereby requiring a focused and long-term follow-up of the patients.

## Financial support

None declared.

## Authors' contribution

Renata da Costa Almeida: Approval of the final version of the manuscript; composition of the manuscript; design of the study; critical review of the literature; critical review of the manuscript.

Óscar Tellechea: Approval of the final version of the manuscript; composition of the manuscript; design of the study; critical review of the literature; critical review of the manuscript.

Mariana Pinho Pereira: Approval of the final version of the manuscript; composition of the manuscript; design of the study; critical review of the literature; critical review of the manuscript.

Rosa Cristina Correia Mascarenhas: Approval of the final version of the manuscript; composition of the manuscript; collection, analysis, and interpretation of data; design of the study; critical review of the literature; critical review of the manuscript.

## Conflicts of interest





None declared.

## Acknowledgment

To my academic adviser, Doctor Ana Sofia Bento, for stimulating and assisting me in the writing of this article.

## References

- Navajas B, Eguino P, Trébol I, Lasa O, Gardeazábal J, Díaz-Pérez JL. Multiple adult xanthogranuloma. *Dermatology*. 2006;212:73–6.
- Achar A, Naskar B, Mondal PC, Pal M. Multiple generalized xanthogranuloma in adult: case report and treatment. *Indian J Dermatol*. 2011;56:197–9.
- Larson MJ, Bandel C, Eichhorn PJ, Cruz PD Jr. Concurrent development of eruptive xanthogranulomas and hematologic malignancy: two case reports. *J Am Acad Dermatol*. 2004;50:976–8.
- Patterson J. Cutaneous infiltrates – non lymphoid. In: Ronald B, Johnston MD, editors. *Weedon's skin pathology*. London: Churchill Livingstone; 2009. p. 951–60.
- Paller A, Mancini AJ. Histiocytoses and malignant skin diseases. In: Amy S, Paller A, Anthony J, editors. *Hurwitz clinical pediatric dermatology: a textbook of skin disorders of childhood and adolescence*. New York: Elsevier; 2011. p. 219–26.

Renata da Costa Almeida <sup>a,\*</sup>, Óscar Tellechea <sup>b,c</sup>,  
Mariana Pinho Pereira <sup>d</sup>,  
Rosa Cristina Correia Mascarenhas <sup>c</sup>

<sup>a</sup> Physician Assistant in Family Medicine, Portugal

<sup>b</sup> Dermatology Service, Centro Hospitalar Universitário de Coimbra, Coimbra, Portugal

<sup>c</sup> Dermatology Service, Hospital Distrital da Figueira da Foz, Figueira da Foz, Portugal

<sup>d</sup> Physician Assistant in Family Medicine, Unidade de Cuidados de Saúde Primários Litoral, Alfeizerão, Portugal

\*Corresponding author.

E-mail: [renatadacostaalmeida@gmail.com](mailto:renatadacostaalmeida@gmail.com) (R.C. Almeida).

Received 11 January 2019; accepted 12 February 2019

<https://doi.org/10.1016/j.abd.2019.02.010>

0365-0596/ © 2019 Sociedade Brasileira de Dermatologia.

Published by Elsevier España, S.L.U. This is an open access article under the CC BY license (<http://creativecommons.org/licenses/by/4.0/>).

## Treatment of Kimura's disease with oral corticosteroid and methotrexate<sup>☆,☆☆</sup>



Dear Editor,

Kimura's disease (KD) was initially described by Kim and Szeto in 1937, and became better known after a systematic description provided by Kimura as a chronic inflammatory disease.<sup>1</sup> Most cases reported occurred in Asian men

between 20 and 30 years of age.<sup>2</sup> Therapeutic modalities for KD include surgical excision, radiotherapy, and various immunomodulating agents, such as oral corticosteroids, cyclosporine, leflunomide, and mycophenolate mofetil.<sup>3</sup> We report a case of KD with an excellent and sustained response to oral corticosteroid and intravenous methotrexate. A 51-year-old man presented with a history of fullness of the bilateral upper eyelids and a similar swelling in the bilateral parotid regions for seven years (Fig. 1); itching or pain symptoms. Physical examination revealed soft, pendular, non-tender mass lesions on both lateral upper eyelids, resulting in mechanical ptosis. The remainder of the ocular examination was within normal limits. His past medical history was unremarkable. Complete rheumatologic and immunologic workup was performed. Complete blood count showed the total number of white blood cells was  $8.3 \times 10^9/L$ , neutrophils  $4.35 \times 10^9/L$  (accounting for 52.4%), lymphocytes  $2.50 \times 10^9/L$  (accounting for 30.1%), and eosinophils  $1.01 \times 10^9/L$  (accounting for 12.2%).

<sup>☆</sup> How to cite this article: Ma H. Treatment of Kimura's disease with oral corticosteroid and methotrexate. *An Bras Dermatol*. 2020;95:115–7.

<sup>☆☆</sup> Study conducted at the Department of Dermatology, the Fifth Affiliated Hospital, Sun Yat-sen University, Zhuhai, Guangdong, China.