



# The Brazilian Journal of INFECTIOUS DISEASES

[www.elsevier.com/locate/bjid](http://www.elsevier.com/locate/bjid)



## Original Article

# Tomographic score (RAD-Covid Score) to assess the clinical severity of the novel coronavirus infection

Tatiana Figueiredo Guimarães Ribeiro \*, Ricardo Arroyo Rstom ,  
Paula Nicole Vieira Pinto Barbosa , Maria Fernanda Arruda Almeida ,  
Marina Martini Costa , Edivaldo Nery de Oliveira Filho ,  
André Santos Barros , Talita Rombaldi Pereira , Silvio Fontana Velludo ,  
Fabrício Próspero Machado

Department of Radiology and Diagnostic Imaging at Prevent Senior, São Paulo, SP, Brazil

### ARTICLE INFO

#### Article history:

Received 1 April 2021

Accepted 27 June 2021

Available online 14 July 2021

#### Keywords:

Covid-19

Chest CT

Infection

Severity

Hospitalization

### ABSTRACT

**Objectives:** The severity of pulmonary Covid-19 infection can be assessed by the pattern and extent of parenchymal involvement observed in computed tomography (CT), and it is important to standardize the analysis through objective, practical, and reproducible systems. We propose a method for stratifying the radiological severity of pulmonary disease, the Radiological Severity Score (RAD-Covid Score), in Covid-19 patients by quantifying infiltrate in chest CT, including assessment of its accuracy in predicting disease severity.

**Methods:** This retrospective, single-center study analyzed patients with a confirmed diagnosis of Covid-19 infection by real-time reverse-transcriptase polymerase chain reaction, who underwent chest CT at hospital admission between March 6 and April 6, 2020. CT scans were classified as positive, negative, or equivocal, and a radiological severity score (RAD-Covid Score) was assigned. Clinical severity was also assessed upon hospital admission.

**Results:** 658 patients were included. Agreement beyond chance (kappa statistic) for the RAD-Covid Score was almost perfect among observers (0.833), with an overall agreement of 89.5%. The RAD-Covid Score was positively correlated with clinical severity and death, i.e., the higher the RAD-Covid Score, the greater the clinical severity and mortality. This association proved independent of age and comorbidities. Accuracy of this score was 66.9%.

**Conclusions:** The RAD-Covid Score showed good accuracy in predicting clinical severity at hospital admission and mortality in patients with confirmed Covid-19 infection and was an independent predictor of severity.

© 2021 Sociedade Brasileira de Infectologia. Published by Elsevier España, S.L.U. This is an open access article under the CC BY-NC-ND license (<http://creativecommons.org/licenses/by-nc-nd/4.0/>)

**Abbreviations:** CT, computed tomography; rt-PCR, real time polymerase chain reaction; Covid-19, coronavirus disease 2019; SARS-CoV-2, severe acute respiratory syndrome coronavirus 2; ICU, intensive care unit; CI, confidence interval; GGO, ground-glass opacities; MDCT, multidetector computed tomography; <https://doi.org/10.1016/j.bjid.2021.101599>

1413-8670/© 2021 Sociedade Brasileira de Infectologia. Published by Elsevier España, S.L.U. This is an open access article under the CC BY-NC-ND license (<http://creativecommons.org/licenses/by-nc-nd/4.0/>)

COPD, chronic obstructive pulmonary disease; CKD, chronic kidney disease

\* **Corresponding author:** Tatiana Figueiredo Guimarães Ribeiro

E-mail address: [tatiana.guimaraes@preventsenor.com.br](mailto:tatiana.guimaraes@preventsenor.com.br) (T.F.G. Ribeiro).

## Introduction

The most serious clinical presentation of the global pandemic caused by the novel coronavirus disease (Covid-19) is severe acute respiratory syndrome coronavirus 2 (SARS-CoV-2).

The clinical spectrum of the disease is broad, with asymptomatic forms or mild flu conditions in most of the infected. Publications estimate that 15-20% of infected persons develop severe pneumonia and 5-10% require intensive care, with a mortality rate of 1 to 3.5%.<sup>1,2</sup>

Chest computed tomography (CT) has an important role in the initial diagnosis of Covid-19, as well as in assessing the severity of lung disease and treatment response, in addition to assisting in the search for complications and differential diagnoses.<sup>3-20</sup>

Some authors have proposed using chest CT in initial Covid-19 diagnosis.<sup>12,19,21</sup> Bai et al. found that CT shows high sensitivity in diagnosing the disease (97%, 95% confidence interval [CI]: 95-98%) and proposed using it as an initial diagnostic tool in high-incidence regions.<sup>19</sup> Assessing typical chest CT images, Barbosa et al. found sensitivity, specificity, and accuracy of 64.0%, 84.8%, and 79.1%, respectively. However, when the images were typical or equivocal, the method's sensitivity, specificity and accuracy were 92.0%, 62.1% and 70.3%, respectively. They proposed including chest CT in the initial screening strategy for patients with clinical suspicion of the disease in settings with limited resources.<sup>21</sup>

Some studies have analyzed the correlation between clinical severity of Covid-19 patients upon presentation and the severity of pulmonary involvement in their chest CT scans<sup>22-27</sup> Radiological severity has been assessed according to the pattern and extent of pulmonary involvement. The British Society of Thoracic Imaging proposed stratification by four degrees of pulmonary involvement ( $\leq 25\%$ ; 26-50%, 51-75% and  $> 75\%$ ) and defining disease severity as mild (up to 3 ground glass opacities [GGO] with a diameter of up to 3 cm), moderate/severe (more than 3 GGO or focal opacities with a diameter  $> 3$  cm and/or consolidation) and severe (diffuse or consolidated GGO with architectural distortion).<sup>28</sup> At other centers, parenchymal involvement has been quantified as mild ( $< 25\%$ ), moderate (25-50%), or severe ( $> 50\%$ ) pulmonary involvement.<sup>25,26</sup>

In this study, we propose a simple method for quantifying parenchymal involvement through chest CT scans obtained upon presentation from patients with confirmed Covid-19 infection, thus stratifying the radiological severity of pulmonary disease. We evaluated the accuracy of this score in predicting clinical severity.

## Materials and Methods

### Participants and study design

This retrospective, observational and single-center study was approved by the institutional research ethics committee, and the informed consent was waived due to the retrospective nature of the study design. Only patients (a) whose Covid-19 infection was confirmed by real-time polymerase chain

reaction (rt-PCR) and (b) who underwent chest CT on admission between March 6 and April 6, 2020 were included. Patients (a) whose rt-PCR examinations were performed more than seven days after chest CT and (b) who were under 18 years of age were excluded.

### Clinical data and assessment of clinical severity

The patients' demographic data (age, sex), comorbidities, and outcome (death or recovery) were collected from the institution's electronic medical records. Clinical severity upon hospital admission was classified according to the institution's treatment protocol for patients with suspected Covid-19: mild (home treatment), moderate (hospitalization), or severe (intensive care unit [ICU] admission). The clinical criteria for medical decisions were:

- **Home treatment:** absence of SARS, with respiratory rate  $< 24$  bpm and oxygen saturation  $> 93\%$ .
- **Hospitalization:** presence of SARS (respiratory rate  $\geq 24$  bpm and/or oxygen saturation  $< 93\%$ ) with no signs of acute respiratory failure or severe hemodynamic instability and no need for orotracheal intubation.
- **ICU admission:** presence of SARS (respiratory rate  $\geq 24$  bpm and/or oxygen saturation  $< 93\%$ ), signs of acute respiratory failure requiring orotracheal intubation, and/or acute worsening of the respiratory pattern, and/or signs of end-organ and/or peripheral hypoperfusion (altered consciousness, elevated lactate, oliguria), and/or distributive shock.

### Image acquisition and analysis protocols and RAD-Covid Score categorization

Chest CT scans were obtained through low-radiation-dose on multidetector computed tomography (MDCT) equipment: 160-MDCT (Aquilion Prime CT, Toshiba/Canon), 64-MDCT (Optima 660, GE), 16-MDCT (Somatom Scope, Siemens), 16-MDCT (Alexion, Toshiba/Canon) and 16-MDCT (BrightSpeed, GE Healthcare). The images were acquired during a deep inspiration, in the supine position, without contrast enhancement, and were reconstructed with 0.625 - 1.250 mm section thickness (with an identical increment) using a lung kernel.

Two radiologists, both with eight years of experience in chest imaging and blinded to the clinical and laboratory data, performed a standardized review of all chest CT images at independent workstations. The images were evaluated using the Fleischner Society glossary as a reference,<sup>29</sup> including lobar location, distribution, and lesion pattern.

The chest CTs were categorized into three diagnostic imaging groups: positive, equivocal, or negative for suspected Covid-19 pneumonia. For this classification we gather some definitions according to the Radiological Society of North America Expert Consensus Statement on Reporting Chest CT Findings Related to Covid-19,<sup>18</sup> as well as other findings in the literature.<sup>19,30,31</sup>

The following were considered positive CT findings for Covid-19 infection: GGO lesions with or without consolidation and predominantly peripheral and bilateral distribution; multifocal GGO lesions with a rounded morphology, with or

without consolidations or “crazy-paving”; the reversed halo sign or other signs of organizing pneumonia. The following were considered equivocal CT findings: nonspecific pulmonary opacities lacking a typical pattern of involvement, such as GGO with diffuse or central distribution, neither rounded, unilateral, some overlapping with typical findings of other underlying pathologies (such as pulmonary fibrosis or emphysema), which sometimes limits diagnosis. The following were considered negative CT findings: a normal chest, lack of significant features or findings suggestive of a

pulmonary pathology unrelated to Covid-19 infection (such as bronchopneumonia, tree-in-bud opacities, neoplasia, cavitation, isolated pleural effusion).

Positive or equivocal CT scans were then visually classified for radiological severity according to the extent of pulmonary impairment, using the RAD-Covid Score (Figure 1):

- RAD-Covid Score 1 (mild): pulmonary involvement < 25%.
- RAD-Covid Score 2 (moderate): pulmonary involvement 25-50%.

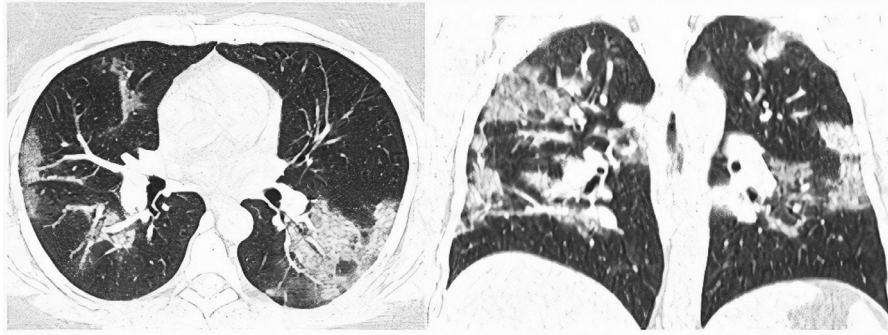
**Step 1: Are there imaging criteria suggestive of COVID-19?**

<b>YES</b>	<b>Typical Covid-19 pulmonary findings (POSITIVE CT)</b>	GGO with or without consolidations, with predominantly peripheral and bilateral distribution; rounded morphology, thickening of intralobular septa (crazy paving pattern), reverse halo sign or other signs of organizing pneumonia.
<b>MAYBE</b>	<b>Indeterminate findings for Covid-19 (EQUIVOCAL CT)</b>	Non-specific findings and absence of typical pattern, such as GGO with diffuse or central distribution, non-rounded or unilateral; or overlap of some of the typical findings with other underlying pathologies (such as fibrosis, emphysema) that limit the diagnosis.
<b>NO</b>	<b>Pulmonary findings not compatible with COVID-19 (NEGATIVE CT)</b>	Normal chest CT or findings that suggest another diagnostic possibility (e.g., bronchopneumonia, budding tree, neoplasm, etc.)

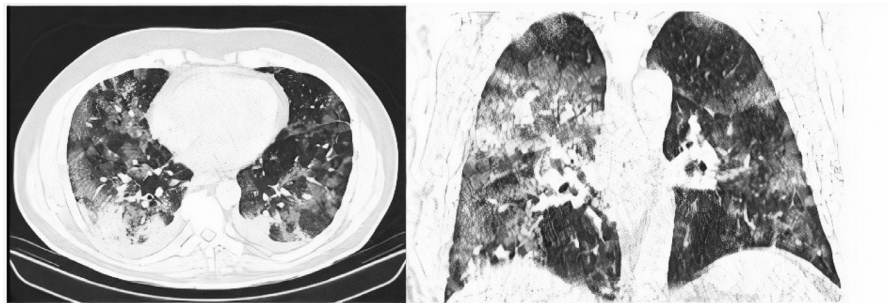
**Step 2: What is the degree of pulmonary impairment? Severity assessment of pulmonary findings.**

<b>POSITIVE OR EQUIVOCAL CHEST CT FOR COVID-19 INFECTION</b>	
<b>RAD-COVID Score 1</b>	Mild (< 25% pulmonary involvement)
<b>RAD-Covid Score 2</b>	Moderate (25-50% pulmonary involvement)
<b>RAD-Covid Score 3</b>	Severe (> 50% pulmonary involvement)
<b>NEGATIVE CHEST CT FOR COVID19 INFECTION</b>	
<b>RAD-Covid Score 0</b>	Absence of pulmonary findings (normal chest CT)
<b>RAD-Covid Score N/A</b>	Findings suggestive of a pulmonary pathology unrelated to Covid-19 infection (such as bronchopneumonia, inflammatory bronchopathy, neoplasm, isolated pleural effusion).

Figure 1 – Pulmonary assessment tutorial for imaging of suspected Covid-19 infections



**Figure 2 – RAD-Covid Score 2.** Male patient, 55 years old, with 4 days of symptoms and Covid-19 infection confirmed by rt-PCR. Moderate pulmonary involvement (25-50%). In this case, we see ground-glass opacities with additional confluent consolidations and “crazy-paving” pattern.



**Figure 3 – RAD-Covid Score 3.** Male patient, 67 years old, with 5 days of symptoms and Covid-19 infection confirmed by rt-PCR. Extensive pulmonary involvement (> 50%). In this case, we see ground-glass opacities, consolidations, septal thickening, and “crazy paving” pattern occupying more than 50% of the total lung volume, with bilateral, peripheral, and central distribution.

- RAD-Covid Score 3 (severe): pulmonary involvement > 50%.

For negative CT scans, we used the descriptors:

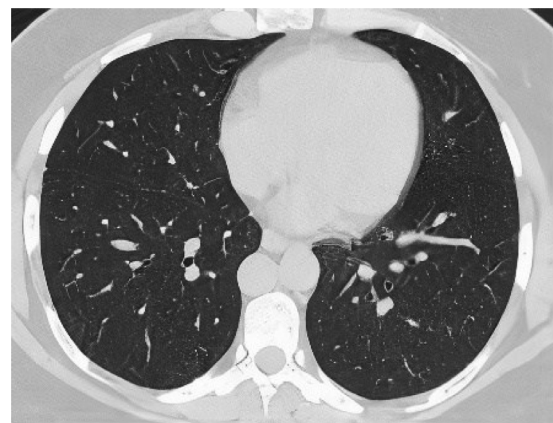
- RAD-Covid Score 0 (normal chest): pulmonary findings lacking or insignificant.
- RAD-Covid Score N/A: features of another pulmonary pathology.

After classification, the data underwent interobserver agreement analysis, divergent interpretations were resolved by consensus. Figures 2 to 4 shows examples of our cases and the corresponding RAD-Covid Score.

#### Statistical analysis

The analyses were conducted with R software, version 3.6.0. (The R Foundation for Statistical Computing). Exploratory data analysis was performed using summary measures (mean, standard deviation, frequency, and percentage). Interrater agreement was assessed with the Kappa coefficient. The influence of the RAD-Covid Score and other clinical and laboratory variables on clinical severity and mortality was assessed using ordinal logistic regression.

As there were many variables studied and the sample size did not support all of them in a multivariate model, the most important from the researcher's point-of-view were selected



**Figure 4 – RAD-Covid Score 0.** Male patient, 42 years old, with 2 days of symptoms and Covid-19 infection confirmed by rt-PCR. The axial chest CT image shows no relevant pulmonary changes (normal chest CT). The chest CT can be negative in the first days of symptoms (the literature reports up to 50% normal CT in patients with less than 2 days of symptoms) (20).



**Table 1 – RAD-Covid Score interobserver agreement (kappa = 0.833; overall agreement = 89.5%)**

Observer 1	Observer 2				
	RAD-Covid Score 1 (mild)	RAD-Covid Score 2 (moderate)	RAD-Covid Score 3 (severe)	N/A	Normal Chest CT
RAD-Covid Score 1 (mild)	330 50.2%	16 2.4%	0 0.0%	0 0.0%	0 0.0%
RAD-Covid Score 2 (moderate)	20 3.0%	138 21.0%	5 0.8%	0 0.0%	0 0.0%
RAD-Covid Score 3 (severe)	1 0.2%	19 2.9%	95 14.4%	0 0.0%	0 0.0%
N/A	0 0.0%	0 0.0%	0 0.0%	19 2.9%	0 0.0%
Normal Chest CT	0 0.0%	0 0.0%	0 0.0%	8 1.2%	7 1.1%

to be included in this model. The stepwise selection criteria made the final choice. The significance level was set at 0.05.

Sensitivity, specificity, and accuracy of the RAD-Covid Score were calculated considering clinical severity. Clinical severity was divided into two groups, one positive including inpatients and the other negative including patients who underwent home treatment. As for radiological severity, CTs classified as RAD-Covid Score 2 and Score 3 were considered positive, and not applicable (NA) CTs, normal CT, or RAD-Covid Score 1 were considered negative.

## Results

### 1 - Study population and Clinical Severity Groups

A total of 658 patients were included in the study, 364 females (55.3%) and 294 males (44.7%), whose age ranged from 21 to 100 years, with a mean of 64.9 years and standard deviation (SD) of 18.2 years. Their ages were categorized as follows: 152 patients (23.1%) aged <50 years, 138 patients (21.0%) aged 51 to 60 years; 63 patients (9.6%) aged 61 to 70 years; 139

patients (21.1%) aged 71 to 80 years, and 166 patients (25.2%) aged > 80 years.

The main comorbidities were arterial hypertension (365 patients, 55.6%), diabetes mellitus (202 patients, 30.7%) and cardiovascular disease (86 patients, 13.1%). There was a low occurrence (less than 10%) of other comorbidities such as obesity, asthma/ chronic obstructive pulmonary disease (COPD), neoplasm and chronic kidney disease (CKD). Regarding clinical severity, 232 patients (35.3%) were assigned home treatment, 321 patients (48.8%) were hospitalized, and 105 patients (16.0%) were admitted to the ICU.

### 2 - Chest CT findings

The chest CTs were classified as positive in 559 patients (84.95%), equivocal in 66 patients (10.93%) and negative in 33 patients (5.02%). The main pulmonary alterations were pure GGO (47.0%) and GGO associated with consolidation (47.4%); crazy-paving pattern (89.9%) and bronchial thickening (72.0%). Most opacities were round (63.5%). The reversed halo sign was observed in 28.8% of the patients. The vast majority had bilateral involvement (88.8%), with either predominantly central and peripheral distribution (59.9%) or only peripheral distribution (34.8%). Pleural effusion was observed in only 55

**Table 2 – RAD-Covid score and clinical severity correlation**

RAD-Covid Score	Clinical Severity		
	Home treatment (N=202)	Hospitalization (N=317)	ICU (N=105)
RAD-Covid Score 1 (<25%)	178 (88.12%)	141 (44.48%)	21 (20.00%)
RAD-Covid Score 2 (25-50%)	22 (10.89%)	132 (41.64%)	23 (21.90%)
RAD-Covid Score 3 (50%)	2 (0.99%)	44 (13.88%)	61 (58.10%)
<b>Ordinal Logistic Regression: OR (95% CI)</b>			
Moderate	5.38 (3.63-8.10)		
Severe	36.04 (21.31-62.27)		

**Table 3 – Sensitivity, specificity, and accuracy of RAD-Covid score (contingency table)**

Radiological Severity (CT results)	Clinical Severity	
	Home treatment (N=202)	Hospitalization (N=317)
RAD-Covid Score 1 + NA+ Normal CT	186	166
RAD-Covid Score 2 + 3	24	260
	Specificity 88%	Sensitivity 61%
		Accuracy 66.9%

**Table 4 – Association of imaging features with clinical severity**

Imaging Features	Clinical Severity			Univariate Ordinal Logistic Regression					Missing
	Home treatment (N=232)	Hospitalization (N=321)	ICU (N=105)	p-value	adj. p-value	OR	LL	UL	
<b>Pattern of lesions</b>									
No opacities	30 (12.9%)	4 (1.25%)	0 (0.00%)						
Consolidation	0 (0.00%)	1 (0.31%)	2 (1.90%)	Category excluded from the regression model					
GGO and consolidation	84 (36.2%)	161 (50.2%)	67 (63.8%)	<0.001	<0.001	21.57	8.26	73.96	
GGO	118 (50.9%)	155 (48.3%)	36 (34.3%)	<0.001	<0.001	11.98	4.61	40.97	
<b>Rounded morphology</b>									
No	46 (22.8%)	131 (41.3%)	51 (48.6%)	<0.001	<0.001	21.57	8.26	73.96	
Yes	156 (77.2%)	186 (58.7%)	54 (51.4%)			0.45	0.33	0.61	
<b>Crazy-Paving</b>									
No	42 (20.8%)	18 (5.68%)	3 (2.86%)	<0.001	<0.001	4.97	2.91	8.75	
Yes	160 (79.2%)	299 (94.3%)	102 (97.1%)						
<b>Reverse Halo Sign</b>									
No	152 (75.2%)	213 (67.2%)	79 (75.2%)	0.509	0.518				
Yes	50 (24.8%)	104 (32.8%)	26 (24.8%)						
<b>Bronchial thickening</b>									
No	88 (37.9%)	79 (24.6%)	20 (19.0%)	<0.001	<0.001	1.98	1.43	2.75	
Yes	144 (62.1%)	242 (75.4%)	85 (81.0%)						
<b>Pleural Effusion</b>									
No	227 (97.8%)	291 (90.7%)	85 (81.0%)	<0.001	<0.001	4.02	2.38	6.84	
Yes	5 (2.16%)	30 (9.35%)	20 (19.0%)						
<b>Lymphadenomegaly</b>									
No	230 (99.1%)	316 (98.4%)	102 (97.1%)						
Yes	2 (0.86%)	5 (1.56%)	3 (2.86%)						
<b>Distribution of lesions</b>									
No opacities	30 (12.9%)	4 (1.25%)	0 (0.00%)						
Central	1 (0.43%)	0 (0.00%)	0 (0.00%)	Category excluded from the regression model					
Central and Peripheric	81 (34.9%)	219 (68.2%)	94 (89.5%)	<0.001	<0.001	30.69	11.76	105.29	
Peripheric	120 (51.7%)	98 (30.5%)	11 (10.5%)	0.001	0.001	6.70	2.55	23.06	
<b>Lung Lobes Involvement</b>									
2+ lobes	158 (78.2%)	308 (97.2%)	103 (98.1%)	<0.001	<0.001	0.10	0.05	0.19	
One lobe	44 (21.8%)	9 (2.84%)	2 (1.90%)						
<b>Bilaterality</b>									
Bilateral	150 (74.3%)	302 (95.3%)	102 (97.1%)	<0.001	<0.001	0.13	0.07	0.23	
Unilateral	52 (25.7%)	15 (4.73%)	3 (2.86%)						
<b>Right Upper Lobe</b>									
No	77 (38.1%)	24 (7.57%)	7 (6.67%)	<0.001	<0.001	7.20	4.59	11.54	
Yes	125 (61.9%)	293 (92.4%)	98 (93.3%)						
<b>Right Medium Lobe</b>									
No	82 (40.6%)	41 (12.9%)	10 (9.52%)	<0.001	<0.001	4.63	3.13	6.93	
Yes	120 (59.4%)	276 (87.1%)	95 (90.5%)						
<b>Right Lower Lobe</b>									
No	31 (15.3%)	14 (4.42%)	1 (0.95%)	<0.001	<0.001	5.09	2.76	9.85	
Yes	171 (84.7%)	303 (95.6%)	104 (99.0%)						

**Table 4 (continued)**

Imaging Features	Clinical Severity		Univariate Ordinal Logistic Regression			Missing		
	Home treatment (N=232)	Hospitalization (N=321)	ICU (N=105)	p-value	adj. p-value		OR	LL
<b>Left Upper Lobe</b>								
No	60 (29.7%)	25 (7.89%)	5 (4.76%)	<0.001	<0.001	5.35	3.37	8.69
Yes	142 (70.3%)	292 (92.1%)	100 (95.2%)					
<b>Left Lower Lobe</b>								
No	42 (20.8%)	20 (6.31%)	4 (3.81%)	<0.001	<0.001	4.25	2.54	7.31
Yes	160 (79.2%)	297 (93.7%)	101 (96.2%)					
GGO: ground glass opacities								

patients (8.4%) and enlarged lymph nodes were unusual (1.5%). The stratification of RAD-Covid Score was mild in 340 cases (51.7%); moderate in 177 cases (26.9%) and severe in 107 cases (16.3%).

**3 – RAD-Covid Score: interobserver agreement and performance in predicting clinical severity**

Table 1 shows the interobserver agreement for the RAD-Covid Score. The agreement beyond chance coefficient was 0.833, with high overall agreement (89.5%).

Table 2 shows the association between RAD-Covid Score and clinical severity (home treatment, hospitalization, and ICU admission). An ordinal logistic regression model was created with clinical severity as the dependent variable and RAD-Covid Score as the predictor variable. According to this model, the risk of increased clinical severity were 5.38-fold (95% CI 3.63 to 8.10) higher for patients with RAD-Covid Score 2 (moderate) than for those with RAD-Covid Score 1 (mild). They were 36.04-fold (95% CI 21.31 to 62.27) higher for RAD-Covid Score 3 (severe) than for RAD-Covid Score 1 (mild) (p-value <0.001).

Most patients (88.12%) in the home treatment group were classified as RAD-Covid Score 1, having mild pulmonary involvement. Among the patients in the hospitalization group, 44.5% had RAD-Covid Score 1, 41.6% had RAD-Covid Score 2, and 13.9% had RAD-Covid Score 3. The occurrence of RAD-Covid Score 3 was high in the ICU group (58.10%) and low in the hospitalization (13.9%) and home treatment (0.99%) groups (see Table 2). For severity classification, the RAD-Covid Score had a sensitivity of 61%, a specificity of 88% and an accuracy of 66,9%. (Table 3).

Tables 4 and 5 present the results of the regression in the line of the predictors. The lines that have no results are those that were considered as reference. Some variables showed great homogeneity in the responses, which makes the model quite unstable, so p-value is not presented.

**4 – The correlation between imaging findings and clinical severity**

Table 4 shows the association between radiological patterns and clinical severity. Patients with a pure GGO pattern were 11.98-fold more likely to have a more severe clinical score than those without opacities. Patients presenting with GGO lesions and consolidation had a 21.57-fold higher risk of a more severe clinical score than patients with no opacities. Patients with round opacities had a 55% lower risk of a more severe clinical score than patients with irregularly shaped opacities. Patients with crazy paving pattern had a 4.97 times higher risk of a more severe clinical score than those without it. Patients with unilateral involvement and a single affected lobe had an 87% and 90% lower risk, respectively, of a more severe clinical score than patients with bilateral involvement and two or more affected lobes.

**5 – The correlation between clinical severity at admission and demographic and clinical data**

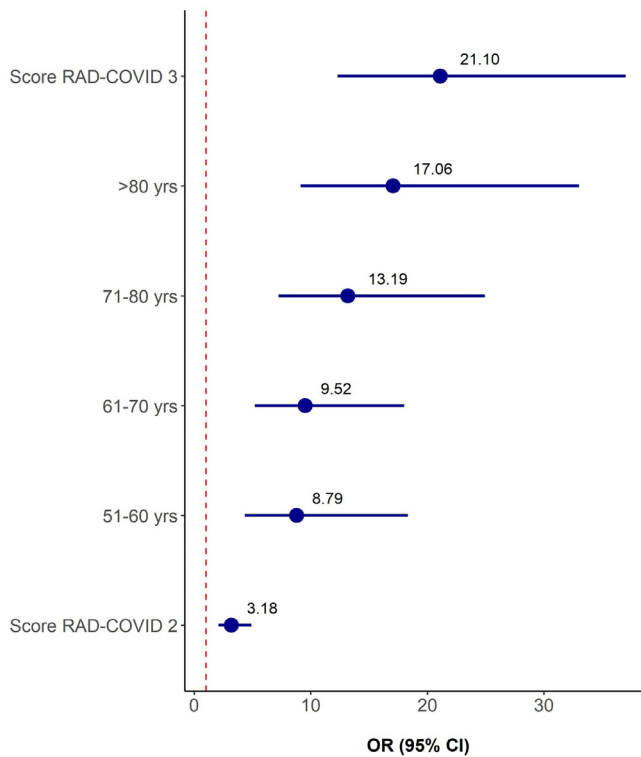
There was no significant difference between men and women regarding clinical severity (Table 5). Patients over 50 years of age had a higher risk of increased clinical severity on admission than those under 50 years (p < 0.001), and those over 80 years of age had a 36.51-fold higher risk (p < 0.001).

The number of comorbidities varied between none and eight per patient, with a mean (±SD) of 1.55±1.37. Patients

Table 5 – Association of clinical variables with clinical severity									
Variable	Clinical Severity			Univariate Ordinal Logistic Regression					Missing
	Home treatment (N=232)	Hospitalization (N=321)	UCI (N=105)	p-value	Adj. p-value	OR	LL	UL	
Male	99 (42.7%)	141 (43.9%)	54 (51.4%)	0.206	0.236				
Female	133 (57.3%)	180 (56.1%)	51 (48.6%)						
Time onset symptoms	4.52 (353)	6.25 (5.04)	6.61 (4.60)	<0.001	<0.001	1.08	1.04	1.11	2
Age Group									
<50	131 (56.5%)	20 (6.23%)	1 (0.95%)						
51-60	20 (8.62%)	32 (9.97%)	11 (10.5%)	<0.001	<0.001	15.85	8.11	67.15	
61-70	33 (14.2%)	85 (26.5%)	21 (20.0%)	<0.001	<0.001	19.41	11.12	31.89	
71-80	29 (12.5%)	100 (31.2%)	37 (35.2%)	<0.001	<0.001	29.60	17.04	35.16	
>80	19 (8.19%)	84 (26.2%)	35 (33.3%)	<0.001	<0.001	36.51	20.58	53.42	
No hypertension	157 (68.3%)	101 (31.5%)	33 (31.4%)	<0.001	<0.001	3.67	2.69	5.03	2
Hypertension	73 (31.7%)	220 (68.5%)	72 (68.6%)						
No obesity	216 (93.5%)	285 (88.8%)	91 (86.7%)	0.028	0.037	1.72	1.06	2.78	1
Obesity	15 (6.49%)	36 (11.2%)	14 (13.3%)						
No diabetes	201 (86.6%)	190 (59.2%)	65 (61.9%)	<0.001	<0.001	2.69	1.96	3.71	
Diabetes	31 (13.4%)	131 (40.8%)	40 (38.1%)						
No asthma	216 (93.1%)	312 (97.2%)	102 (97.1%)						
Asthma	16 (6.90%)	9 (2.80%)	3 (2.86%)						
No COPD	214 (94.7%)	295 (94.2%)	93 (89.4%)	0.120	0.147				
COPD	12 (5.31%)	18 (5.75%)	11 (10.6%)						
No smoker	220 (94.8%)	303 (94.4%)	94 (89.5%)						
Current Smoker	12 (5.17%)	18 (5.61%)	11 (10.5%)						
Never smoked	229 (98.7%)	316 (98.4%)	105 (100%)	0.006	0.009	1.98	1.22	3.22	
Former smoker	3 (1.29%)	5 (1.56%)	0 (0.00%)						
No Malignancy	218 (94.0%)	286 (89.1%)	89 (84.8%)	0.001	0.002	2.89	1.50	5.57	1
Malignancy	14 (6.03%)	35 (10.9%)	16 (15.2%)						
No CVD	213 (91.8%)	276 (86.0%)	83 (79.0%)	0.001	0.002	2.06	1.34	3.18	
CVD	19 (8.19%)	45 (14.0%)	22 (21.0%)						
No Cerebrovasc Dis	225 (97.0%)	290 (90.3%)	95 (90.5%)	0.007	0.010	2.11	1.23	3.63	
Cerebrovasc Dis	7 (3.02%)	31 (9.66%)	10 (9.52%)						
No CKD	222 (95.7%)	298 (92.8%)	98 (93.3%)	0.243	0.272				
CKD	10 (4.31%)	23 (7.17%)	7 (6.67%)						
Number of comorbidities	0.91 (1.27)	1.85 (1.29)	2.03 (1.29)	<0.001	<0.001	1.64	1.46	1.84	

COPD: chronic obstructive pulmonary disease; CVD: cardiovascular disease; Cerebrovasc Dis: cerebrovascular disease; CKD – chronic kidney disease.





**Figure 5 – Odds ratios and 95% CI of the Ordinal Regression Model for Clinical Severity**

with hypertension, obesity, diabetes mellitus, current neoplasm, cardiovascular disease, and cerebrovascular disease had a higher risk of increased clinical severity upon hospital admission than patients without comorbidities ( $p < 0.05$ ).

Symptom onset time ranged from 0 to 32 days, with a mean of  $5.7 \pm 4.57$  days. Those patients with longer symptom

duration had more severe conditions upon admission (hospitalization and ICU groups) than those assigned home treatment ( $p < 0.001$ ).

**6- Multivariate analysis of RAD-Covid Score, age, and comorbidities in relation to clinical severity upon admission**

The variables RAD-Covid Score, age range, and comorbidities (hypertension, obesity, diabetes mellitus, former smoker, current neoplasm, treated neoplasm, cardiovascular disease, cerebrovascular disease, and chronic kidney disease) were included in a multiple ordinal logistic regression model with clinical severity as the response variable for a total of 620 patients. Table 7 and Figure 5 show the stepwise variable selection. Independent predictive factors for increased clinical severity were higher RAD-Covid Score and advanced age. With age as a fixed effect, patients with RAD-Covid Score 2 were 3.18 times more likely to have increased clinical severity than patients with RAD-Covid Score 1, while patients with RAD-Covid Score 3 were 21.10 times more likely to have increased clinical severity than patients with RAD-Covid Score 1. With RAD-Covid Score as a fixed effect, we observed that the older the patient, the greater the risk of more severe clinical conditions. Patients 51-60 years of age were 8.79 times more likely to have increased clinical severity than patients under 50 years of age. Patients over 80 years of age were 17.06 times more likely to have increased clinical severity than patients under 50 years of age.

**7 - Correlation of the RAD-Covid Score with fatal outcome**

Table 6 shows the results of the logistic regression model, with fatal outcome as the response variable and RAD-Covid Score as the predictor variable. The mortality risk in patients with RAD-Covid Score 2 was 2.63 times higher than that of patients with RAD-Covid Score 1, while the mortality risk in patients with RAD-Covid Score 3 was 7.67 times higher than that of patients with RAD-Covid Score 1.

**Table 6 – Association between the RAD-COVID Score and death**

RAD-Covid Score	Death	
	No (N=436)	Yes (N=188)
RAD-Covid Score 1 (<25%)	281 (64.45%)	59 (31.38%)
RAD-Covid Score 2 (25-50%)	114 (26.15%)	63 (33.51%)
RAD-Covid Score 3 (50%)	41 (9.40%)	66 (35.11%)
<b>Ordinal Logistic Regression: OR (95% CI)</b>		
Moderate:	2.63 (1.74-4.00)	
Severe:	7.67 (4.77-12.49)	

**Table 7 – Multiple Ordinal Logistic Regression**

Variable	OR	95% CI (OR)		p-value
RAD-Covid Score 2	3.18	2.09	4.90	<0.001
RAD-Covid Score 3	21.10	12.29	37.01	<0.001
51-60 yrs	8.79	4.34	18.33	<0.001
61-70 yrs	9.52	5.21	18.02	<0.001
71-80 yrs	13.19	7.25	24.94	<0.001
>80 yrs	17.06	9.14	33.03	<0.001

---

## Discussion

Some studies have investigated the correlation between pulmonary involvement in Covid-19 infection and clinical severity upon admission. In this study we have proposed a simple and convenient method for quantifying imaging results to assess the radiological severity of the disease and identify patients in need of hospitalization.

The RAD-Covid Score had an almost perfect agreement beyond chance coefficient ( $\kappa = 0.833$ ) with high overall agreement (89.5%), showing its reproducibility as an evaluation system. It is based on criteria that can be easily and quickly assessed in chest CT. Two other studies<sup>32,33</sup> have used more complex scoring methods to classify the extent of pulmonary involvement, assessing the opacification of several pulmonary regions. Similar to our findings, these methods also obtained excellent interobserver agreement and found higher radiological scores for cases of greater clinical severity.

Our results showed that the proposed RAD-Covid Score was positively correlated with the clinical severity of the disease, i.e., the higher the RAD-Covid Score, the higher the risk of progressing to more severe clinical conditions. The RAD-Covid Score was an independent predictor of severity, along with advanced age and comorbidities, and was positively correlated with risk of fatal outcome.

Regarding demographic data, sex did not significantly influence clinical severity scores, nor was it relevant in another recent publication.<sup>32</sup> Age, on the other hand, was a significant predictor of clinical severity, as has been reported in recent publication.<sup>39</sup> Patients over 50 years of age had a higher risk of increased clinical severity upon admission than patients under 50 years of age ( $p < 0.001$ ). There was also a significant progressive increase in clinical severity in higher age groups that was especially evident in patients over 80 years of age (odds ratio 36.51).

Regarding comorbidities, hypertension, obesity, diabetes mellitus, current neoplasm, cardiovascular disease, and cerebrovascular disease were correlated with increased clinical severity upon hospital admission. An association of two or more comorbidities increased the risk of clinical severity: the risk of a higher score increased 64% with each additional comorbidity (Table 5). According to the literature, clinical comorbidities in Covid-19 patients are heterogeneous, with the most frequent being hypertension and diabetes mellitus.<sup>34,35</sup> Recent publications have observed that patients with chronic diseases are more susceptible to respiratory failure and death from Covid-19.<sup>36,37</sup> Another study<sup>38</sup> found that any comorbidity in Covid-19 patients predisposes them to a worse prognosis, and the risk increases with every additional comorbidity.

Our study has some limitations, the first of which is that assessing the extent of pulmonary involvement is a subjective process, and there will be disagreement over pulmonary involvement percentages in borderline scores. Although we found a high rate of agreement among observers, artificial intelligence software that can objectively estimate such percentages could lead to even more reliable results. Second, we evaluated chest CT scans upon hospital admission and set no limit on days since symptom onset, which may have impacted the stratification of RAD-Covid Scores. Due to the

retrospective nature of the study, our data collection was limited regarding certain comorbidities (COPD and current smoking), some of which were reported incorrectly in the medical records, which probably impacted our results.

In conclusion, in confirmed cases of Covid-19 infection, the proposed RAD-Covid Score classification predicted clinical severity upon hospital admission and fatal outcome with good accuracy, being an independent predictor of clinical severity in relation to age and comorbidities, two variables that also influence outcomes. Thus, we propose that CT severity score should be included in the radiological report as a support tool in clinical decision making.

---

## Funding information

The authors state that this study has received no funding.

---

## Informed consent

Written informed consent was not required for this retrospective article.

---

## Ethical approval

Institutional Review Board approval was obtained from Dante Pazzanese Cardiology Institute Ethical Committee CAAE: 32408920.2.0000.5462

---

## Conflicts of interest

All authors of this manuscript declare no relationships with any companies whose products or services may be related to the subject matter of the article.

---

## Acknowledgments

We would like to thank our patients, our fellow radiologists at Prevent Senior for providing medical records of suspected cases of Covid-19 infection and, especially, the radiology coordinators for contributing to data collection in these cases: Dr. Affonso Bruno Binda, Dr. Wagner Nóbrega, Dr. Luciano Aguiar, Dr. Arthur Sauma, Dr. Dario Salano Jr., Dr. Demian Travesso and Dr. Márcio Gaspar.

---

## REFERENCES

1. Lake MA. What we know so far: Covid-19 current clinical knowledge and research. *Clin Med (Lond)*. 2020 Mar;20(2):124-7.
2. Wu Z, McGoogan JM. Characteristics of and Important Lessons From the Coronavirus Disease 2019 (Covid-19) Outbreak in China: Summary of a Report of 72 314 Cases From the Chinese Center for Disease Control and Prevention. *JAMA*. 2020 Feb 24. <https://doi.org/10.1001/jama.2020.2648>.

3. Xie X, Zhong Z, Zhao W, Zheng C, Wang F, Liu J. Chest CT for Typical 2019-nCoV Pneumonia: Relationship to Negative RT-PCR Testing. *Radiology*. 2020. <https://doi.org/10.1148/radiol.2020200343>.
4. Chua F, Armstrong-James D, Desai SR, et al. The role of CT in case ascertainment and management of Covid-19 pneumonia in the UK: insights from high-incidence regions. *Lancet Respir Med*. 2020. [https://doi.org/10.1016/S2213-2600\(20\)30132-6](https://doi.org/10.1016/S2213-2600(20)30132-6). PII: S2213-2600(20)30132-6.
5. Zhou Z, Guo D, Li C, et al. Coronavirus disease 2019: initial chest CT findings. *Eur Radiol*. 2020. <https://doi.org/10.1007/s00330-020-06816-7>.
6. Han R, Huang L, Jiang H, Dong J, Peng H, Zhang D. Early Clinical and CT Manifestations of Coronavirus Disease 2019 (Covid-19) Pneumonia. *AJR Am J Roentgenol*. 2020. <https://doi.org/10.2214/AJR.20.22961>.
7. Salehi S, Abedi A, Balakrishnan S, Gholamrezaezhad A. Coronavirus Disease 2019 (Covid-19): A Systematic Review of Imaging Findings in 919 Patients. *AJR Am J Roentgenol*. 2020. <https://doi.org/10.2214/AJR.20.23034>.
8. Guan CS, Lv ZB, Yan S, et al. Imaging Features of Coronavirus disease 2019 (Covid-19): Evaluation on Thin-Section CT. *Acad Radiol*. May. 2020;27(5):609–13.
9. Li M, Lei P, Zeng B, et al. Coronavirus Disease (Covid-19): Spectrum of CT Findings and Temporal Progression of the Disease. *Acad Radiol*. 2020;27(5):603–8. 2020 May.
10. Xu X, Yu C, Qu J, et al. Imaging and clinical features of patients with 2019 novel coronavirus SARS-CoV-2. *Eur J Nucl Med Mol Imaging*. 2020;47(5):1275–80. May.
11. Li Y, Xia L. Coronavirus Disease 2019 (Covid-19): Role of Chest CT in Diagnosis and Management. *AJR Am J Roentgenol*. 2020. <https://doi.org/10.2214/AJR.20.22954>.
12. Ai T, Yang Z, Hou H, et al. Correlation of Chest CT and RT-PCR Testing in Coronavirus Disease 2019 (Covid-19) in China: A Report of 1014 Cases. *Radiology*. 2020. <https://doi.org/10.1148/radiol.2020200642>.
13. Pan F, Ye T, Sun P, et al. Time Course of Lung Changes On Chest CT During Recovery From 2019 Novel Coronavirus (Covid-19) Pneumonia. *Radiology*. 2020. <https://doi.org/10.1148/radiol.2020200370>.
14. Liu KC, Xu P, Lv WF, et al. CT manifestations of coronavirus disease-2019: A retrospective analysis of 73 cases by disease severity. *Eur J Radiol*. 2020. <https://doi.org/10.1016/j.ejrad.2020.108941>.
15. Zhou S, Wang Y, Zhu T, Xia L. CT Features of Coronavirus Disease 2019 (Covid-19) Pneumonia in 62 Patients in Wuhan, China. *AJR Am J Roentgenol*. 2020. <https://doi.org/10.2214/AJR.20.22975>.
16. Ye Z, Zhang Y, Wang Y, Huang Z, Song B. Chest CT manifestations of new coronavirus disease 2019 (Covid-19): a pictorial review. *Eur Radiol*. 2020. <https://doi.org/10.1007/s00330-020-06801-0>.
17. Wang Y, Dong C, Hu Y, et al. Temporal Changes of CT Findings in 90 Patients with Covid-19 Pneumonia: A Longitudinal Study. *Radiology*. 2020. <https://doi.org/10.1148/radiol.2020200843>.
18. Simpson S, Kay FU, Abbara S, et al. Radiological Society of North America Expert Consensus Statement on Reporting Chest CT Findings Related to Covid-19. Endorsed by the Society of Thoracic Radiology, the American College of Radiology, and RSNA. *Radiology: Cardiothoracic Imaging*. 2020. <https://doi.org/10.1148/ryct.2020200152>.
19. Bai HX, Hsieh B, Xiong Z, et al. Performance of radiologists in differentiating Covid-19 from viral pneumonia on chest CT. *Radiology*. 2020. <https://doi.org/10.1148/radiol.2020200823>.
20. Ng M-Y, Lee EYP, Yang J, et al. Imaging Profile of the Covid-19 Infection: Radiologic Findings and Literature Review. *Radiol Cardiothorac Imaging*. 2020. <https://doi.org/10.1148/ryct.2020200034>.
21. Barbosa PNVP, Bitencourt AGV, Miranda GD, Almeida MFA, Chojniak R. Acurácia da TC de tórax no diagnóstico de infecção por SARS-CoV-2 – experiência inicial em um centro oncológico. *Radiol. Bras*. 2020. <https://doi.org/10.1590/0100-3984.2020.0040>.
22. Francone M, Iafrate F, Masci GM, et al. Chest CT score in COVID-19 patients: correlation with disease severity and short-term prognosis. *Eur Radiol*. 2020;30:6808–17. <https://doi.org/10.1007/s00330-020-07033-y>.
23. Peng S, Chen J, Zhang W, et al. The role of chest CT quantitative pulmonary inflammatory index in the evaluation of the course and treatment outcome of COVID-19 pneumonia. *Sci Rep*. 2021;11:7752. <https://doi.org/10.1038/s41598-021-87430-5>.
24. Saeed Ghufuran, Gaba Waqar, Shah Asad, Helali Abeer, Raidullah Emadullah, Ali Ameerah, Elghazali Mohammed, Kaabi Shaikha, Almazrouei Safaa. Correlation between Chest CT Severity Scores and the Clinical Parameters of Adult Patients with COVID-19 Pneumonia. *Radiology Research and Practice*. 2021: 1–7. <https://doi.org/10.1155/2021/6697677>. 2021.
25. Colombi D, Bodini FC, Petrini M, et al. Well-aerated lung on admitting chest CT to predict adverse outcome in COVID-19 pneumonia. *Radiology*. 2020 Apr 17:201433. Online ahead of print.
26. Choi H, Qi X, Yoon SH, et al. Extension of coronavirus disease 2019 (COVID-19) on chest CT and implications for chest radiograph interpretation. *Radiology: Cardiothoracic Imaging*. 2020;2(2).
27. Meirelles GSP. COVID-19: a brief update for radiologists. *Radiol Bras*. 2020;53(5):320–8. Set/Out.
28. British Society of Thoracic Imaging (2020). Thoracic Imaging in Covid-19 Infection – Guidance for the reporting radiologist, Version 2. Available via [https://www.bsti.org.uk/media/resources/files/BSTI\\_Covid-19\\_Radiology\\_Guidance\\_version\\_2\\_16.03.20.pdf](https://www.bsti.org.uk/media/resources/files/BSTI_Covid-19_Radiology_Guidance_version_2_16.03.20.pdf)
29. Hansell DM, Bankier AA, MacMahon H, McLoud TC, Müller NL, Remy J. Fleischner Society: Glossary of terms for thoracic imaging Vol. 246 *Radiology*. 2008;246(3):697–722. Radiological Society of North America; Mar.
30. Bernheim A, Mei X, Huang M, et al. Chest CT Findings in Coronavirus Disease-19 (Covid-19): Relationship to Duration of Infection. *Radiology*. 2020. <https://doi.org/10.1148/radiol.2020200463>.
31. Chung M, Bernheim A, Mei X, et al. CT imaging features of 2019 novel coronavirus (2019-nCoV). *Radiology*. Feb; 2020;295(1):202–7.
32. Yang R, Li X, Liu H, et al. Chest CT Severity Score: An Imaging Tool for Assessing Severe Covid-19. *Radiology: Cardiothoracic Imaging*. 2020. <https://doi.org/10.1148/ryct.2020200047>.
33. Li K, Fang Y, Li W, et al. CT image visual quantitative evaluation and clinical classification of coronavirus disease (Covid-19). *European Radiology*. 2020. <https://doi.org/10.1007/s00330-020-06817-6>. 99.
34. Huang C, Wang Y, Li X, et al. Clinical features of patients with 2019 novel coronavirus in Wuhan, China. *Lancet*. 2020;395(10223):497–506.
35. Guan WJ, Ni Z-Y, Hu Y, et al. Clinical Characteristics of Coronavirus Disease 2019 in China. *N Engl J Med*. 2020;382:1708–20.
36. Chen N, Zhou M, Dong X, et al. Epidemiological and clinical characteristics of 99 cases of 2019 novel coronavirus pneumonia in Wuhan, China:

- a descriptive study. *Lancet*. 2020;395(10223):507–13.
37. Wang D, Hu B, Hu C, et al. Clinical Characteristics of 138 Hospitalized Patients With 2019 Novel Coronavirus-Infected Pneumonia in Wuhan, China. *JAMA*. 2020. <https://doi.org/10.1001/jama.2020.1585>.
38. Guan W-J, Liang W-H, Zhao Y, et al. Comorbidity and its impact on 1590 patients with Covid-19 in China: A Nationwide Analysis. *European Respiratory Journal*. 2020. <https://doi.org/10.1183/13993003.00547-2020>.
39. Richardson S, Hirsch JS, Narasimhan M, et al. Presenting Characteristics, Comorbidities, and Outcomes Among 5700 Patients Hospitalized With Covid-19 in the New York City Area. *JAMA*. 2020. <https://doi.org/10.1001/jama.2020.6775>. Published online April 22.