



Characterization of a small cryptic plasmid from endophytic *Pantoea agglomerans* and its use in the construction of an expression vector

Rudi Emerson de Lima Procópio¹, Welington Luiz Araújo^{2,3}, Fernando Dini Andreote²
and João Lúcio Azevedo^{2,3}

¹*Biotecnologia, Instituto de Ciências Biomédicas IV, Universidade de São Paulo, São Paulo, SP, Brazil.*

²*Departamento de Genética, Escola Superior de Agricultura “Luiz de Queiroz”,
Universidade de São Paulo, Piracicaba, SP, Brazil.*

³*Núcleo Integrado em Biotecnologia, Universidade de Mogi das Cruzes, Mogi das Cruzes, SP, Brazil.*

Abstract

A circular cryptic plasmid named pPAGA (2,734 bp) was isolated from *Pantoea agglomerans* strain EGE6 (an endophytic bacterial isolate from eucalyptus). Sequence analysis revealed that the plasmid has a G+C content of 51% and contains four potential ORFs, 238(A), 250(B), 131(C), and 129(D) amino acids in length without homology to known proteins. The shuttle vector pLGM1 was constructed by combining the pPAGA plasmid with pGFPmut3.0 (which harbors a gene encoding green fluorescent protein, GFP), and the resulting construct was used to over-express GFP in *E. coli* and *P. agglomerans* cells. GFP production was used to monitor the colonization of strain EGE6gfp in various plant tissues by fluorescence microscopy. Analysis of EGE6gfp colonization showed that 14 days after inoculation, the strain occupied the inner tissue of *Eucalyptus grandis* roots, preferentially colonizing the xylem vessels of the host plants.

Key words: green fluorescent protein, bacteria, host plant, *Eucalyptus*.

Received: June 6, 2010; Accepted: July 15, 2010.

Introduction

Endophytic bacteria are microorganisms that can reside inside a host plant without triggering harmful reactions and/or induce the development of external structures like rhizobial nodules (Azevedo and Araújo, 2007). Due to the ability of endophytes to proliferate inside plant tissue, they are more likely to interact closely with the host than are rhizosphere bacteria (Reinhold-Hurek and Hurek, 1998). These characteristics make bacterial endophytes excellent candidates for the development of sustainable crop production strategies (Sturz *et al.* 2000).

Eucalyptus is one of the most important crops in Brazil and is used for the production of cellulose and paper (Sociedade Brasileira de Silvicultura). Previous studies have described the genus *Pantoea* (Gammaproteobacteria) as an important group of bacteria endophytically colonizing plants (Araújo *et al.*, 2001, 2002; Duan *et al.*, 2007; Procópio *et al.*, 2009). The roles of such endophytic bacteria inside the host plant include nitrogen fixation, production of phytohormones, solubilization of phosphates, and

induction of systemic resistance (Sturz *et al.* 2000; Feng *et al.*, 2006; Ortmann and Moerschbacher, 2006; Son *et al.*, 2006).

The combination of its endophytic nature and the high occurrence of the genus *Pantoea* in plants generate an opportunity to address the increasing interest in genetically modified endophytes (GMEs) (Andreote *et al.*, 2004). The use of GMEs is based on the introduction of heterologous genes into endophytic bacteria to confer new characteristics that may be useful in monitoring plant colonization and, features within the inner tissue of the host plant. Here we describe the characterization and cloning of a cryptic plasmid found in strains of *Pantoea agglomerans* isolated from eucalyptus. Moreover, we also describe the construction of a shuttle vector carrying the gene *gfp*, which was efficiently used to monitor the bacterial colonization of eucalyptus plants.

Materials and Methods

Bacterial strains

The bacterial strain EGE6 (*P. agglomerans*) was previously isolated from *Eucalyptus grandis* (Procópio REL, PhD Thesis, University of São Paulo, 2004), and its phylogenetic affiliation was assessed by sequencing the 16S

rDNA gene. Genomic DNA from the strain was extracted from 1 mL of an overnight culture as described by Sambrook *et al.* (1989). The 16S rRNA gene was amplified by PCR using primers (27f and 1378r) and protocols described by Weisburg *et al.* (1991). The PCR product was purified using a GFX PCR DNA (Amersham Biosciences) and Gel Band Purification kit (Amersham Biosciences), and the resulting sample was sequenced using the 1378R primer on an automated sequencer (Applied Biosystems 3100). The resulting chromatogram was analyzed for sequence quality using Phred/Phrap, and only bases with quality values above 20 were used for phylogenetic analysis (490 bp in total). The final sequence was compared to the database from the GenBank by a non-redundant BLASTn search (nr/nt). Additionally, the phylogenetic analysis of the obtained sequence was performed using the ARB software package (Department of Microbiology, Technical University of Munich, Munich, Germany). The nucleotide sequence obtained in this study was deposited at GenBank under the accession code (FN868159).

Nucleotide sequencing and analysis

Plasmid DNA in *P. agglomerans* strains was isolated by alkaline lysis, as described by Sambrook *et al.* (1998). A total of approximately 2.7 kb of the pPAGA plasmid was analyzed by restriction mapping, and a unique site for restriction with the endonuclease *EcoRI* was found. The pPAGA plasmid was then cloned into the vector pUC18 (in *Escherichia coli* strain DH5 α) using the *EcoRI* site and sequenced by primer walking using the DNA sequencer ABI model 3100 with the Big Dye terminator kit (Applied Biosystems, Foster City, CA), according to the manufacturer's instructions.

The quality of obtained sequences was assessed as previously described for the strain identification, and resulting sequences were assembled using Consed, compounding the final sequence of the pPAGA plasmid. The final sequence was also compared with the GenBank database (with an nr/nt search). Estimation of GC content was made at the EMBL-EBI website. Additionally, analysis of open reading frames (ORFs) and restriction maps was performed using the NEB cutter 2.0 program, and promoter sequences were predicted using the "Neural Network Promoter Prediction" program of the University of California, Berkeley. The nucleotide sequence of pPAGA has been assigned GenBank accession number (FN868248).

Expression vector construction and transformation of the EGE6 strain

A constitutive ribosomal RNA promoter was first cloned into the vector pGFPmut3.1, driving a strong and continuous expression of the gene *gfp*. The 340-bp region containing the RNA promoter was amplified by PCR with specific primers for the ribosomal RNA promoter from the *E. coli* genome (Shen *et al.*, 1982). Second, the

pGFPmut3.1 vector harboring the promoter region was linearized with the endonuclease *EcoRI* for ligation with *EcoRI*-digested pPAGA. This ligation generated the endophyte vector pLGM1, which expresses the *gfp* gene constitutively. Such ligation did not interfere with any ORF present in the original pPAGA plasmid, maintaining the plasmid function as in the original strain.

The pLGM1 vector was then introduced into EGE6 cells by electroporation (2.5 kV, 200 Ω , 25 μ F) as described by Andreote *et al.* (2004), and the recombinant *P. agglomerans* strain was named EGE6*gfp*. Under ultraviolet light, EGE6*gfp* cells display an intense fluorescent green color, evidencing the vector induced production of GFP protein within the bacteria.

E. grandis cultivation and inoculation with EGE6*gfp*

Eucalyptus seedlings were inoculated with a suspension of EGE6*gfp* cells. To generate the cell suspension, EGE6*gfp* was cultured in 5 mL of liquid LB medium supplemented with ampicillin (100 μ g/mL) for 5 h at 150 rpm. Cells were harvested by centrifugation (5,000 g for 5 min), washed and inoculated into new liquid LB medium without antibiotics. Following culture for 10 h at 150 rpm, cells were harvested and rinsed twice with 10 mM potassium phosphate buffer (pH 7). The final suspension was prepared in sterilized distilled water at a final concentration of 10⁶ cells per ml (as determined turbidimetrically and confirmed by plating counts).

Eucalyptus seedlings used in this study were 40 days old and had an average height of 25 cm. Seedlings were obtained by seed cultivation in vermiculite supplied with water. Seedlings were inoculated with 1 mL of bacterial suspension administered to the rhizospheres. To achieve a proper inoculation, the bacterial cell suspension was carefully introduced 1 cm below the vermiculite surface using a pipette tip. This process prevented the contamination of sampled aliquots with aboveground *E. grandis* tissue. Plants were grown at 28 °C with a 14 h photoperiod in a controlled environmental chamber for 14 days. At day 14 after inoculation, the plants were examined with an epifluorescence microscope (Zeiss Axiophot-2) and photographed with an automatic photograph system as described by Lacava *et al.* (2007).

Results

Sequencing analysis of the pPAGA plasmid

Restriction analysis of pPAGA revealed a unique site for restriction with the endonuclease *EcoRI*. This site was used for the insertion of the cryptic plasmid into the pUC18 cloning vector, allowing for its sequencing by primer walking. This procedure resulted in the determination of the sequence of 2,734 base pairs making up the pPAGA plasmid.

The GC content of pPAGA is 51.71%, which is within the range of GC contents previously reported in the

genomic analysis of *E. coli* (50.8%, Blattner *et al.*, 1997) and *Erwinia carotovora* (51.0%, Bell *et al.*, 2004). Sequence analysis showed the presence of four putative ORFs in pPAGA, each of which would encode a protein of more than 100 amino acids (aa) (Figure 1).

A putative operon was also found, comprising ORFs 1 and 2, which are separated by only three nucleotides. *orf1* putatively encodes the largest polypeptide (238 aa), extending from nucleotides 232 to 948. The sequence of this ORF displays high coverage (up to 98%) and similarity (> 50%) values with hypothetical proteins from distinct bacterial species such as *Solibacter*, *Methylobacterium*, *Bacillus*, *Beijerinckia*, and *Burkholderia*. *orf2* spans nucleotides 951 to 1703 and putatively encodes a protein of 250 aa. Within this ORF, it was possible to observe the presence of a highly conserved domain named DUF2382, which is found in many bacteria but is of unknown function. These results regarding ORFs 1 and 2 indicate that such proteins may have common roles in different bacterial groups. Their presence on a plasmid, which can be easily exchanged in the environment among bacterial cells not related phylogenetically, may explain the diversity of species carrying similar proteins.

Both other ORFs were minor, encoding peptides of 131 and 129 aa, possibly related to the presence of truncated genes in the plasmid. *orf3* (131 aa) shows low similarity (30% to 50%) with proteins involved in type IV secretion system in *Cupriavidus taiwanensis* (Betaproteobacteria), while *orf4* (129 aa) presents also low levels of

similarity with enzymes involved in the promotion of oxidative processes in bacterial cells. In general, there was low resolution in the BLAST analysis of these ORFs, indicating that there is limited knowledge about plasmids found in endophytic bacteria.

Despite the presence of these ORFs, no similarity was found between the plasmid sequence and sequences reported as origins of plasmid replication (*ori* regions). However, analysis of the DNA sequence revealed two AT-rich regions in the plasmid (Figure 2). These regions are described in the literature as being related to a replication origin (*ori*) region, due to the intrinsic capacity of such a sequence to promote double helix dissociation (Ioannidis *et al.*, 2007). The existence of islands within the plasmid sequence was also indicated, reinforcing its origin from gene transfer and recombination with other DNA sequences.

The attempt to find putative promoter regions within the sequence of the pPAGA plasmid resulted in the identification of nine regions possibly involved in the promotion of gene expression with scores higher than 0.90 (scale from 0.0 to 1.0) (Table 1). Five of these regions were found in the forward orientation, along with three ORFs, and four putative promoters were observed in the reverse orientation, where only one ORF is located. The location of two putative promoter regions (PrFw1 and PrFw2) upstream of ORFs 1 and 2 corroborates the possibility of an operon being formed by these two ORFs and also suggests that the regulation of such an operon would be modulated by more than one distinct factor. Considering the location of other

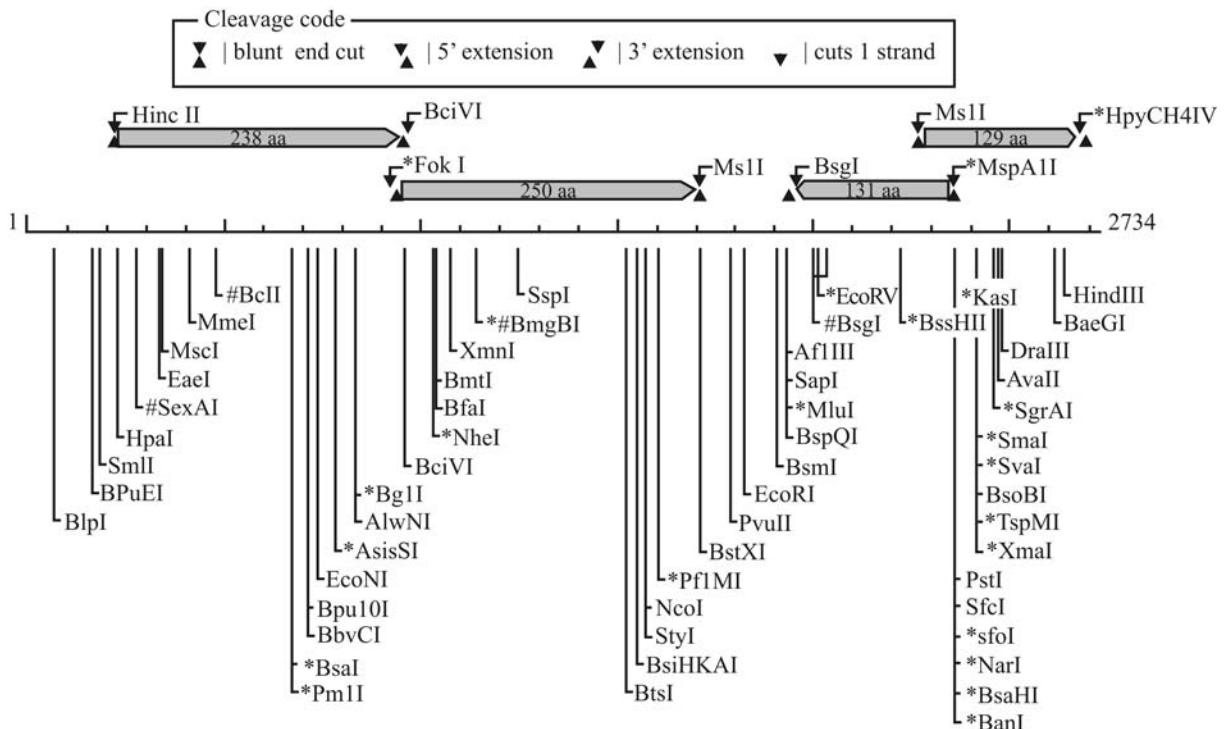


Figure 1 - Physical map and genetic organization of the cryptic plasmid pPAGA, indicating the locations and orientations of the four described putative ORFs. The most relevant restriction sites are also indicated.

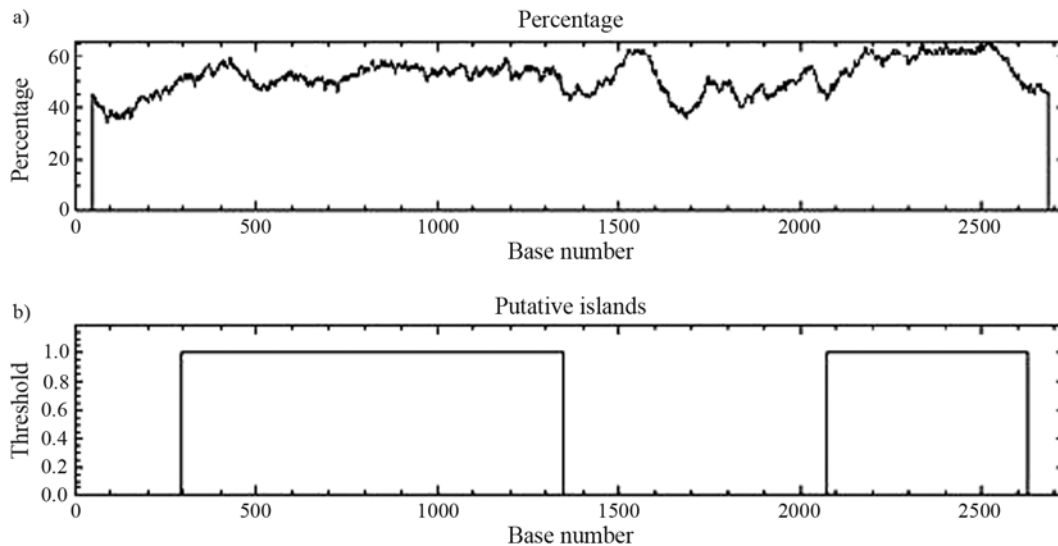


Figure 2 - GC content analysis of the pPAGA plasmid extracted from strain EGE6, a eucalyptus plant endophyte. The GC content (%) along the sequence is represented (a) along with regions possibly constituting islands within the plasmid (b).

putative promoter regions, it is also possible to attribute the regulation of *orf4* to PrFw4 and PrFw5 and the possible control of *orf3* to PrRv4. The other putative promoter regions were not adjacent to any ORF but may be involved in the regulation of plasmid replication regions.

Construction of an expression vector based on pPAGA

The relatively small size (2,734 bp) of the plasmid pPAGA makes it a candidate for the development of a shuttle vector for endophytic *P. agglomerans* and related species. Such a strategy followed by introducing pPAGA sequence into the pUC18 cloning vector along with a 212-bp fragment from the *E. coli* rRNA promoter controlling the gene responsible for the synthesis of Gfp (Figure 3). A chimeric plasmid was generated, containing the cryptic plasmid, the pUC18 vector, and a reporter gene. Re-introduction of the new vector, designated pLGM1, into *P. agglomerans* cells resulted in an excellent means for visualizing the cells under ultraviolet light. Due to the use of the pPAGA backbone, the final vector was stable in EGE6 cells, where it showed high levels of GFP production.

Endophytic colonization by *P. agglomerans* EGE6gfp

The colonization of *P. agglomerans* in eucalyptus seedlings was analyzed by the introduction of the expression vector pLGM1 into cells of the strain EGE6, generating the genetically modified endophytic strain EGE6gfp. Image analysis of cells from strain EGE6gfp showed that these bacteria have the capacity to enter root tissue and establish colonization in the inner tissue of the host plant (Figure 4). Based on such imaging, it is also possible to sug-

gest that these bacteria inhabit the vascular tissue of eucalyptus seedlings, preferentially xylem cells.

Discussion

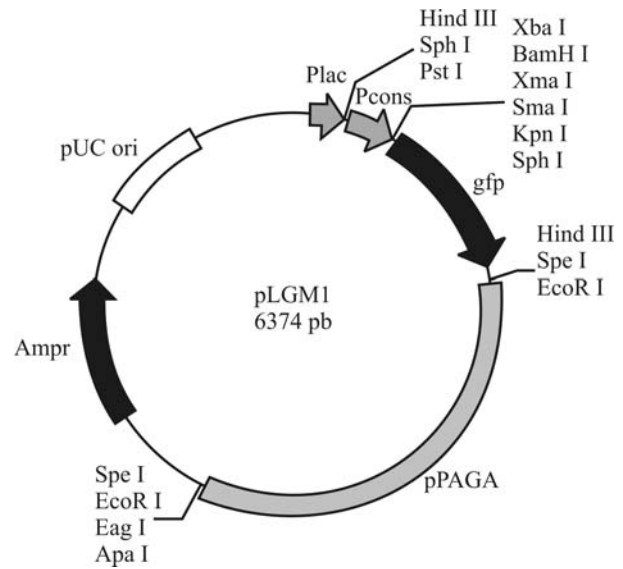
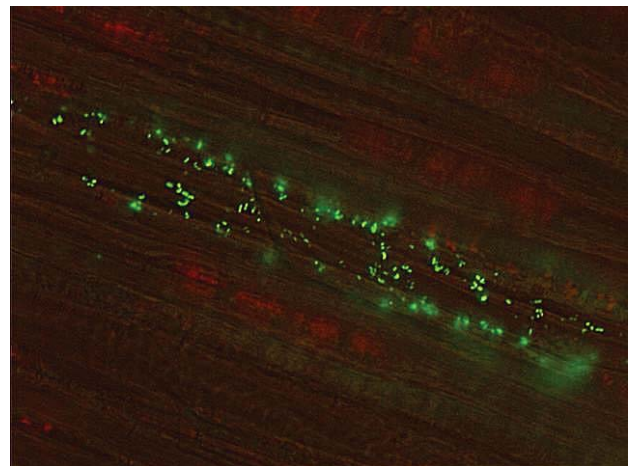
In this study we describe the characterization of a cryptic plasmid named pPAGA isolated from *Pantoea agglomerans* strain EGE6, an endophytic bacterial isolate from eucalyptus. Bacteria of the species *P. agglomerans* have been considered one of the most important groups in terms of endophytic interaction with plants (Torres *et al.*, 2008). Strains of this species have been found in studies using several plant species, such as rice (Verma *et al.*, 2004), citrus (Araújo *et al.*, 2001), and eucalyptus (Ferreira *et al.*, 2008). In some of these studies, the authors have demonstrated plant colonization by the addition of reporter genes into the bacterial cells (Sabaratnam and Beattie, 2003; Verma *et al.*, 2004; Duan *et al.*, 2007). Previous work in eucalyptus has shown *P. agglomerans* to be a seed endophyte, suggesting that endophytic *P. agglomerans* can be transmitted vertically from seeds to seedlings in *Eucalyptus* (Ferreira *et al.*, 2008). It has also been suggested that *P. agglomerans* can be transported through xylem vessels or through the colonization of intercellular spaces in root and aerial tissues (Compant *et al.*, 2005). Verma *et al.* (2004) suggested that genus *Pantoea* is an aggressive endophytic colonizer of deep-water rice. The authors made this conclusion based on a competition experiment, in which another endophytic strain of the genus *Ochrobactrum* showed very little colonization in the presence of *Pantoea* sp.

The strain EGE6, used in this study, was previously described (Procópio REL, PhD Thesis, University of São Paulo, 2004) as harboring a cryptic plasmid, named pPAGA, which was characterized and sequenced in this study. A similar approach was recently described by An-

Table 1 - List of putative promoter regions found within the sequence of the cryptic plasmid pPAGA obtained from cells of the endophytic *Pantoea agglomerans* strain EGE6.

Strand	Putative promoter name	Sequence location	Putative promoter sequence	Promoter score	Possible ORF regulation
Forward	PrFw1	86-131	CTTTTACTTAAATTGCCTGCATTTTCTGTATTTTCTATCTTTTGTAGT	0.99	<i>orf1</i> , <i>orf2</i>
	PrFw2	94-139	TAAATTGCCTGCATTTTCTGTATTTTCTATCTTTTGTAGTCTTTGTG	0.90	<i>orf1</i> , <i>orf2</i>
	PrFw3	1813-1858	TCATGGTTTTAAGAAITCACCCAGACATGATACAACTCCCTGCATGTCGAA	0.99	ND
	PrFw4	2066-2110	AGATGGCTGAAAGCCGACACTGATGAGAAATAATCCAAATGGATCTGAAA	0.98	<i>orf4</i>
	PrFw5	2246-2291	AGTGTGATGACAGCCACCCGGATGCTGACATTTATACCCGATGCCGCAGC	0.93	<i>orf4</i>
Reverse	PrRv1	2130-2085	CAGGCGTTTGCTTCAAACGTTTTTCAGATCCATTGGATATTAATTCATCA	0.98	ND
	PrRv2	1742-1697	CTGTAATCGTATTTACTCAAAATGTTGCATCCACCATCATGGCATTACGG	0.91	ND
	PrRv3	1421-1376	TCGCTGGCCTTTTACGCAGCACCACCTTCTTCAAATAATTCGGCAGTCTT	0.93	ND
	PrRv4	246-201	TCAGGAGGTTGATTGTTTCATGGTTAACCTGCCTGTAATAFACAGAGCGATCA	0.94	<i>orf3</i>

ND - ORF regulation was not indicated based on the location within the pPAGA plasmid sequence.

**Figure 3** - Schematic representation of the shuttle vector pLGM1. The cloning sites and promoter are indicated.**Figure 4** - Fluorescence microscopy image of the endophytic *P. agglomerans* EGE6gfp colonizing the root tissue of *E. grandis*. The fluorescent green area indicates the presence of bacteria within the plant, colonizing the region occupied by the vascular system (xylem). The plant provides a support for the colonizing bacteria (red and brown background).

dreote *et al.* (2008), who also found a cryptic plasmid, pPA3.0, within cells of endophytic *P. agglomerans* isolated from citrus plants. In a comparison with the findings obtained by Andreote *et al.* (2008), the identified plasmids did not present similarities. Plasmid sizes vary by approximately 200 pb (pPA3.0 is 2.9 kb, while pPAGA is 2.7 kb in length), and are divergent regarding the genetic information they carry. While the plasmid described in citrus endophytes primarily presents small ORFs, with the biggest one encoding a peptide of 199 aa, the pPAGA plasmid harbors several ORFs coding for peptides of around 230 aa. Based on both analyses, it is possible to suggest that endophytic *P. agglomerans* species are important keepers of cryptic plasmids, possibly providing for the efficient exchange of genetic material with other endophytic bacteria within plants.

Further studies are necessary to determine the essentiality of these ORFs for endophytic behavior and development within plants.

There was variation in the GC content of the cryptic plasmid, suggesting the presence of an origin of replication without high similarity to any previously described *ori* regions and also the existence of regions that were incorporated into pPAGA by horizontal gene transfer and recombination. Horizontal transfer likely occurs in soil (Syvanen and Kado, 1998; Gebhard and Smalla, 1999;), where these bacteria can live part of their life, but it still represents a phenomenon to be explored in endophytic communities. One could suggest that the putative genes *orf1* and *orf2*, found under the regulation of the same promoter regions, are essential for the endophytic characteristics of *P. agglomerans* and, therefore, are refractory to transmission by horizontal gene transfer within the host plant. However, this hypothesis must be tested further to be properly affirmed.

Similar to results described by Andreote *et al.* (2008), we used the cryptic plasmid backbone to develop a shuttle vector that is able to carry and express exogenous genes within the host plant. This approach was based on other studies, in which several shuttle vectors were constructed using replication regions from small cryptic plasmids (An and Miyamoto, 2006; Matsui *et al.*, 2007; Sangrador-Vegas *et al.*, 2007). The selected reporter gene, from pGFPmut3.1, was a variant *gfp* gene with higher fluorescence and reduced half-life (Andersen *et al.*, 1998, 2001). The efficient introduction of such a gene in endophytes and the further visualization of cells expressing the exogenous gene within plant tissue support the possibility of introducing new characteristics into endophytes. The genetic modification of bacteria is useful for the expression of genes that can benefit the host plant.

We also observed preferential occupation of the plant vessels by the genetically modified endophyte EGE6*gfp*, suggesting that this bacterium can invade internal root tissues of eucalyptus seedlings by passing epidermal and cortical cells and permeating the central cylinder. Such results corroborate the data described by Ferreira *et al.* (2008), suggesting that if bacteria related to *P. agglomerans* are transferred by seeds, it will result in the preferential spreading of bacterial cells along the aerial portion of the plant through xylem vessels once the plant begins to develop.

In this study we characterized a cryptic plasmid found in endophytic *P. agglomerans* isolated from eucalyptus. In addition, we used this plasmid to create a shuttle vector, which can provide a means for introducing genes into plant cells. This study will support further research aiming to manipulate endophytic bacteria for the benefit of healthy plants.

Acknowledgments

This work was supported by a grant from Suzano de Papel e Celulose S.A. We thank FAPESP for providing a fellowship to R.E.L.P. (Grant no. 00/07053-2).

References

- An HY and Miyamoto T (2006) Cloning and sequencing of plasmid pLC494 isolated from human intestinal *Lactobacillus casei*: Construction of an *E. coli*-*Lactobacillus* shuttle vector. *Plasmid* 55:128-134.
- Andersen JB, Sternberg C, Poulsen LK, Bjørn SP, Givskov M and Molin S (1998) New unstable variants of green fluorescent protein for studies of transient gene expression in bacteria. *Appl Environ Microbiol* 64:2240-2246.
- Andersen JB, Heydorn A, Hentzer M, Eberl L, Geisenberger O, Christensen BB, Molin SR and Givskov M (2001) Gfp-based N-acyl homoserine-lactone sensor systems for detection of bacterial communication. *Appl Environ Microbiol* 67:575-585.
- Andreote FD, Gullo MJM, Lima AOD, Maccheroni Jr W, Azevedo JL and Araujo WL (2004) Impact of genetically modified *Enterobacter cloacae* on indigenous endophytic community of *Citrus sinensis* seedlings. *J Microbiol* 42:169-173.
- Andreote FD, Rossetto PB, Souza LCA, Marcon J, Maccheroni Jr W, Azevedo JL and Araujo WL (2008) Endophytic population of *Pantoea agglomerans* in citrus plants and development of a cloning vector for endophytes. *J Basic Microbiol* 48:338-346.
- Araújo WL, Maccheroni Jr W, Aguilar-Vildoso CI, Barroso PAV, Saridakis HO and Azevedo JL (2001) Variability and interactions between endophytic bacteria and fungi isolated from leaf tissues of citrus rootstocks. *Can J Microbiol* 47:229-236.
- Araújo WL, Marcon J, Maccheroni Junior W, Elsas JD, van Vuurde JWL and Azevedo JL (2002) Diversity of endophytic bacterial populations and their interaction with *Xylella fastidiosa* in citrus plants. *Appl Environ Microbiol* 68:4906-4914.
- Azevedo JL and Araújo WL (2007) Diversity and applications of endophytic fungi isolated from tropical plants. In: Ganguli BN and Desmukh SK (eds). *Fungi: Multifaceted Microbes*. Anamaya Publishers, New Delhi, pp 189-207.
- Bell KS, Sebahia M, Pritchard L, Holden MTG, Hyman LJ, Holeva MC, Thomson NR, Bentley SD, Churcher LJC, Mungall K, *et al.* (2004) Genome sequence of the enterobacterial phytopathogen *Erwinia carotovora* subsp. *atroseptica* and characterization of virulence factors. *Proc Natl Acad Sci USA* 101:11105-11110.
- Blattner FR, Plunkett III G, Bloch CA, Perna NT, Burland V, Riley M, Collado-Vides J, Glasner JD, Rode CK, Mayhew GF, *et al.* (1997) The complete genome sequence of *Escherichia coli* K-12. *Science* 277:1453-1474.
- Compant S, Reiter B, Sessitsch A, Nowak J, Clement C and Barka EA (2005) Endophytic colonization of *Vitis vinifera* L. by plant growth-promoting bacterium *Burkholderia* sp. strain PsJN. *Appl Environ Microbiol* 71:1685-1693.
- Duan J, Yi T, Lu Z, Shen D and Feng Y (2007) Rice endophyte *Pantoea agglomerans* YS19 forms multicellular symplasmata via cell aggregation. *FEMS Microbiol Lett* 270:220-226.
- Feng Y, Shen D and Song W (2006) Rice endophyte *Pantoea agglomerans* YS19 promotes host plant growth and affects allocations of host photosynthates. *J Appl Microbiol* 100:938-945.

- Ferreira A, Quecine MC, Laçava PT, Azevedo JL and Araújo WL (2008) Diversity of endophytic bacteria from *Eucalyptus* species seeds and colonization of seedlings by *Pantoea agglomerans*. FEMS Microbiol Lett 287:8-14.
- Gebhard F and Smalla K (1999) Monitoring field releases of genetically modified sugar beets for persistence of transgenic plant DNA and horizontal transfer. FEMS Microbiol Ecol 28:261-272.
- Ioannidis P, Hotopp JCD, Sapountzis P, Siozios S, Tsiamis G, Bordenstein SR, Baldo L, Werren JH and Bourtzis K (2007) New criteria for selecting the origin of DNA replication in *Wolbachia* and closely related bacteria. BMC Genomics 8:1-15.
- Lacava PT, Araujo WL and Azevedo JL (2007) Evaluation of endophytic colonization of *Citrus sinensis* and *Catharanthus roseus* seedlings by endophytic bacteria. J Microbiol 45:11-14.
- Matsui T, Saeki H, Shinzato N and Matsuda H (2007) Analysis of the 7.6-kb cryptic plasmid pNC500 from *Rhodococcus rhodochrous* B-276 and construction of *Rhodococcus-E. coli* shuttle vector. Appl Microbiol Biotech 74:169-175.
- Ortmann I and Moerschbacher BM (2006) Spent growth medium of *Pantoea agglomerans* primes wheat suspension cells for augmented accumulation of hydrogen peroxide and enhanced peroxidase activity upon elicitation. Planta 224:963-970.
- Procópio REL, Araújo WL, Maccheroni Jr W and Azevedo JL (2009) Characterization of an endophytic bacterial community associated with *Eucalyptus* spp. Genet Mol Res 8:1408-1422.
- Reinhold-Hurek B and Hurek T (1998) Interactions of graminaceous plants with *Azoarcus* spp. and other diazotrophs: Identification, localization, and perspectives to study their function. Crit Rev Plant Sci 17:29-54.
- Sabaratnam S and Beattie GA (2003) Differences between *Pseudomonas syringae* pv. *syringae* B728a and *Pantoea agglomerans* BRT98 in epiphytic and endophytic colonization of leaves. Appl Environ Microbiol 69:1220-1228.
- Sambrook J, Fritsch EFE and Maniatis T (1998) Molecular Cloning: A Laboratory Manual. 2nd edition. Cold Spring Harbor Laboratory Press, New York.
- Sangrador-Vegas A, Stanton C, van Sinderen D, Fitzgerald GF and Ross RP (2007) Characterization of plasmid pASV479 from *Bifidobacterium pseudolongum* subsp. *globosum* and its use for expression vector construction. Plasmid 58:140-147.
- Shen WF, Squires C and Squires CL (1982) Nucleotide sequence of the *rrnG* ribosomal RNA promoter region of *Escherichia coli*. Nucleic Acids Res 10:3303-3313.
- Syvanen M and Kado CI (1998) Horizontal Gene Transfer. Chapman & Hall, London, 474 pp.
- Son HJ, Park GT, Cha MS and Heo MS (2006) Solubilization of insoluble inorganic phosphates by a novel salt- and pH-tolerant *Pantoea agglomerans* R-42 isolated from soybean rhizosphere. Biores Technol 97:204-210.
- Sturz AV, Christie BR and Nowak J (2000) Bacterial endophytes: Potential role in developing sustainable systems of crop production. Crit Rev Plant Sci 19:1-30.
- Torres AR, Araujo WL, Cursino L, Hungria M, Plotegher F, Mostasso FL and Azevedo JL (2008) Diversity of endophytic enterobacteria associated with different host plants. J Microbiol 46:373-379.
- Verma SC, Singh A, Chowdhury SP and Tripathi AK (2004) Endophytic colonization ability of two deep-water rice endophytes, *Pantoea* sp. and *Ochrobactrum* sp. using green fluorescent protein reporter. Biotech Lett 26:425-429.
- Weisburg WG, Barns SM, Pelletier DA and Lane DJ (1991) 16S ribosomal DNA amplification for phylogenetic study. J Bacteriol 173:697-703.

Internet Resources

- EMBL-EBI website, <http://www.ebi.ac.uk/Tools> (March 2009).
- NEB cutter 2.0 program, <http://tools.neb.com/NEBcutter2/index.php> (February 2010).
- Neural Network Promoter Prediction, program of the University of California, Berkeley: http://www.fruitfly.org/seq_tools/promoter.html (February 2010).
- Sociedade Brasileira de Silvicultura, <http://www.sbs.org.br> (June 2010).

Associate Editor: Luis Carlos de Souza Ferreira

License information: This is an open-access article distributed under the terms of the Creative Commons Attribution License, which permits unrestricted use, distribution, and reproduction in any medium, provided the original work is properly cited.