

Tensile Bond Strength of a Soft Liner to an Acrylic Resin after Primer Application and Thermocycling

Marcelo Coelho Goiato^{a*}, Daniela Micheline dos Santos^a, Rodrigo Antonio de Medeiros^a,

Aljomar José Vechiato Filho^a, Mário Alexandre Coelho Sinhoret^b,

Emily Vivianne Freitas da Silva^a, Amália Moreno^a

^aDepartment of Dental Materials and Prosthodontics, Aracatuba Dental School, Universidade Estadual Paulista "Júlio de Mesquita Filho" – UNESP, Rua Jose Bonifacio, 1193, Vila Mendonca, CEP 16015-244, Aracatuba, SP, Brazil

^bDental Materials Division, Department of Restorative Dentistry, Piracicaba Dental School, Universidade Estadual de Campinas – UNICAMP, Avenida Limeira, 901, Vila Rezende, CEP 13414-903, Piracicaba, SP, Brazil

Received: June 10, 2015; Revised: October 18, 2015

Purpose: The aim of this study was to evaluate the effect of a surface treatment with Sofreliner primer on tensile bond strength of a resin-based soft liner (Coe-Soft) bonded to a polymethylmethacrylate (PMMA) resin before and after accelerated aging simulated by a thermocycling machine. **Material and Methods:** One hundred and twenty rectangular specimens of PMMA resin were fabricated with $10 \times 10 \text{ mm}^2$ of cross-section and 40 mm of height. The resin-based soft liner was positioned between two PMMA resin specimens. The specimens were divided randomly into 6 groups ($n = 10$) according to the surface treatment and accelerated aging cycles (0, 500 and 1000). After accelerated aging, specimens were submitted to tensile bond strength test. The fractures were classified as adhesive, cohesive or both. **Results:** Most failures were classified as cohesive ($p = 0.025$) and there was an increase on the mean values of tensile bond strength for group with primer application regardless the cycles of accelerated aging, and also an increase along thermocycling periods. The scanning electronic microscopy was used to illustrate the types of failures and the effect of primer application on PMMA acrylic resin surface. **Conclusion:** The primer application associated with resin-based soft liners is clinically viable, once this treatment strategy provides a reliable adhesion.

Keywords: primers and coupling agents, surface treatment, denture liners, acrylic resins, adhesion

1. Introduction

The resilient denture liners are indicated for the restoration of inflamed support tissues, severe bone resorptions and low resilience mucosa because of their damping effect and by providing increased prosthesis stability¹⁻⁴.

These materials are classified as resin-based soft liner and silicone-based soft liner³ and are composed by monomers and polymers associated with plasticizers^{5,6} which provide softness to the relining material and comfort to the patient⁷. Despite this advantage, the failure on adhesion of resilient liners to denture bases is one of the most common problems in clinical practice^{1,8,9}.

This failure is related to several factors: the non-use of primer, the mechanical properties of acrylic resin^{9,10} and relining materials, and the aging of relining materials, which are in a constant contact with saliva, water, and changes in temperature due to feeding⁸. The aging may change the relining materials properties, providing loss of plasticizers and resilience reduction, thus affecting the adhesion¹¹.

Some union agents, i.e. primers, are developed to prevent these failures because of their interaction with the surface of

acrylic resin and the resilient liners^{1,2}. It has been speculated that, although fabricated for silicone-based soft liner, the organic solvents present in primers composition may improve the adhesion between these materials¹²⁻¹⁴.

This study aimed to evaluate the effect of Sofreliner primer on tensile bond strength of a resin-based liner before and after accelerated aging simulated by a thermocycling machine. The first hypothesis of the study was that the Sofreliner primer should have a positive effect, significantly increasing the bond strength, and the second hypothesis was that the application of Sofreliner primer promotes more cohesive failures.

2. Material and Methods

The Table 1 presents the materials used in this in vitro study. For tensile test, 120 rectangular specimens of PMMA resin were fabricated from solid metallic matrices with dimensions of $10 \times 10 \times 40 \text{ mm}$. The resin excesses were removed with a maxicut bur and the specimens were sequentially polished with 200- and 400-grit sandpapers.

*e-mail: goiato@foa.unesp.br

The solid metallic matrices were placed inside a metallic flask, and a metallic bar with 3 mm in thickness was positioned between them. An impression of this conjunct was performed with laboratorial silicone (Zetalabor, Zhermack, Badia Polesine, Rovigo, Italy). After silicone polymerization, metallic matrices were substituted by PMMA specimens and the metallic bar was substituted by resin-based soft liner. Sofreliner primer was applied on the half of PMMA specimens at the surface that was in contact with the resin-based soft liner. These specimens were storage in distilled water at 37 °C for 24 h before the tensile test¹⁵. All the materials were prepared according to manufacturer's instructions and by the same operator.

The specimens were randomly divided into 6 groups (n = 10) according to the surface treatment and to accelerated aging cycles (0, 500 and 1000). The number of cycles simulated a short or prolonged clinical use. The thermocycling was performed for 30 s with alternated baths in distilled water at 5 °C or 55 °C¹⁶.

The tensile bond strength test was performed in a universal testing machine (EMIC DL-3000, EMIC, São José dos Pinhais, PR, Brazil) with a constant velocity of 5 mm/min until failure was detected⁵. The tensile bond strength (MPa) was calculated dividing the maximum tensile strength value by the specimen cross-sectional area. The failure analysis was performed by a single operator through a stereomicroscope (Carl Zeiss 40096) under 32 × magnification, after the rupture of the specimen and failure was classified as cohesive, adhesive or both. The failures classification was performed according to the quantity of resin-based soft liner displaced. The total tearing of relining material was classified as cohesive, the total displacement of the material was classified as adhesive

while the partial displacement between specimens and partial tiring of the relining material was classified as both.

One specimen with primer application and one with no surface treatment were submitted to the scanning electronic microscopy (SEM) (JSM 610LA; JEOL) under 140× and 5,000× magnifications in order to illustrate the type of failures and the surface.

The averages and standard deviations were calculated for each group, results were submitted to the two-way analysis of variance (ANOVA) and significant differences were compared by Tukey test ($\alpha = 0.05$). Failures were analyzed by Fisher test ($\alpha = 0.05$).

3. Results

The tensile bond strength means are presented in Table 2. The analysis of variance shows no statistically significant difference between the factors primer and thermocycling. However, tensile bond strength values increased for the group with Sofreliner primer, regardless accelerated aging cycles. Increased tensile bond strength results were also observed along the thermocycling periods for both groups (with or without primer), regardless surface treatment.

Table 3 shows that cohesive failure was significantly more prevalent in groups with Sofreliner primer application in comparison with the group without primer. Thus, it can be assumed that the distribution of types of failure depended on the primer application. The SEM analysis illustrates the types of failures (Figure 1) and the effect of primer on PMMA acrylic resin surface (Figure 2). This surface treatment provided a more homogenous surface with a layer that is probably the agent necessary for bonding the PMMA acrylic resin to the resin-based soft liner.

Table 1. Materials used in this study.

Material	Composition	Manufacturer
QC-20	Heat-cured acrylic resin	Dentsply International INC, New York, EUA
Sofreliner Primer	Methylene chloride, polymethylmethacrylate with polyorganosiloxane	Tokuyama Dental Corp., Tokyo, Japan
Coe-soft	Powder: polyethyl methacrylate, zinc undecylenate, and pigments. Liquid: benzyl salicylate, dibutyl phthalate ethyl alcohol, methylsalicylate, oil mint.	Coe Laboratories Inc, Chicago, EUA.

Table 2. Tensile bond strength results (MPa) according to the surface treatment (Sofreliner) and cycles of accelerated aging.

	Baseline	500 cycles	1000 cycles
Non- primer application	0.43 (0.12) Aa	0.46 (0.09) Aa	0.44 (0.04) Aa
Primer application	0.45 (0.11) Aa	0.46 (0.16) Aa	0.51 (0.14) Aa

Means followed by different uppercase letter (line) and lowercase letters (column) differ statistically according to Tukey test ($p \leq 0.05$)

Table 3. Type of adhesive failures according to the application or not of Sofreliner primer.

	Type of failures			Fisher's exact test: (Two-tailed)	0.025 alpha
	Adhesive	Cohesive	Both		
Non-primer application	1	19	10	p-value	0.05
Primer application	0	27	3	alpha	0.025

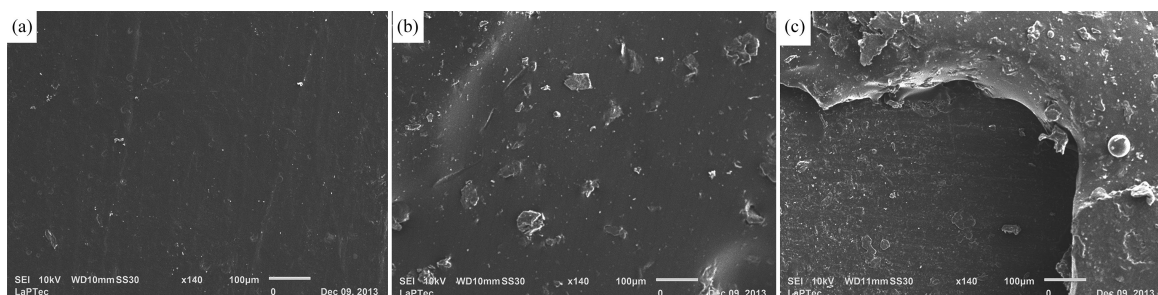


Figure 1. Types of failures after rupture on tensile bond strength test. (a) Adhesive failure with the complete rupture of the PMMA acrylic resin to the resin-based soft liner; (b) Cohesive failure with the displacement of the resin-based soft liner; (c) Image of both types of failures listed above.

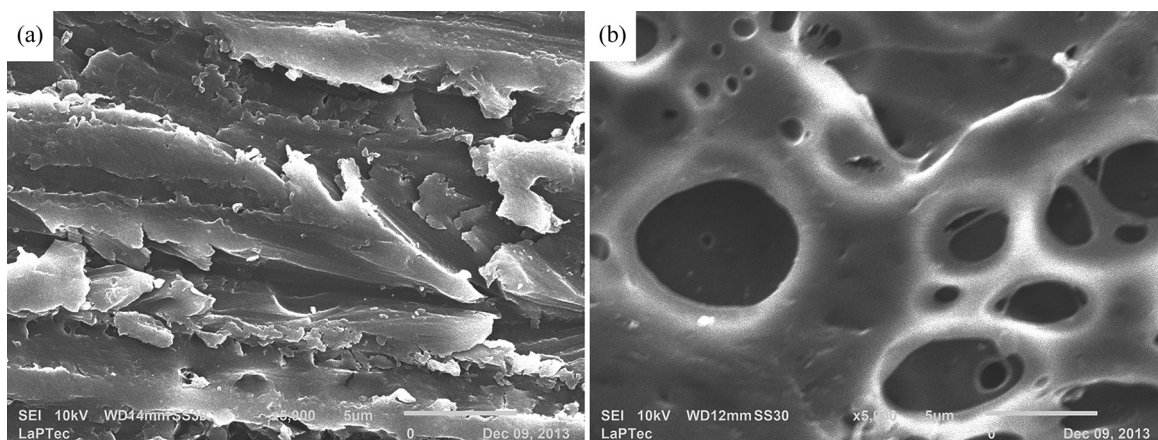


Figure 2. (a) PMMA acrylic resin with non-application of Sofreliner primer and (b) after Sofreliner application.

4. Discussion

The first hypothesis was rejected because the results did not show statistically significant difference regarding the tensile bond strength between the resin-based soft liner and the PMMA resin with primer application. The second hypothesis was accepted because the results showed a significant difference regarding the types of failures with predominant cohesive failure after primer application.

The primer used in the present study is fabricated for silicone-based soft liner and solvents (99.5%) and agents of union (0.5%) in its composition. This primer was tested because there is no primer available on dentistry market for resin-based soft liner. The main function of these agents of union is to unite the PMMA resin with the silicone¹². According to SEM images, the authors assume that a layer of these agents of union was created after the primer application. Regarding the solvent, the authors believe it was responsible for the slight increase on tensile bond strength mean results and for the majority of cohesive failures after application of the evaluated primer, because of the conditioning effect on the PMMA acrylic resin surface.

The increasing of cohesive failures after primer application suggests an improvement on the tensile bond strength of the resin-based soft liner to the PMMA acrylic resin because the adhesion between these materials might be stronger than the intermolecular forces of the relining material.

This fact probably occurred because of the conditioning effect promoted by the solvents, increasing the physical contact of these materials.

Regarding the predominance of cohesive failures, it can be observed a slight increasing in tensile bond strength results after primer application, regardless thermocycling. However, this increasing did not lead to statistical differences between groups. The authors assume that this fact probably occurred because of the conditioning effect on PMMA acrylic resin surface promoted by the solvents present in the primer composition, as Can et al.⁸ affirmed, facilitating the bonding of the resin-based soft liner to the PMMA acrylic resin. According to Mutluay et al.¹³, the solvents increase the surface wettability, promote the cleaning of the surface, and dissolve unattached particles of PMMA acrylic resin surface. The authors believe that significant differences could be observed on mean tensile bond strength results if the primers presented more effective solvents on their composition.

In literature there are several surface treatments for improving the bond strength of resin based soft liners with PMMA. Philip et al.¹⁷ found that treatment with alumina particles for 5 minutes abrasion followed by monomer immersion exhibited higher bond strength. However, Kulkarni et al.¹⁸ concluded that only the use of the monomer is effective method to increased bond strength between PMMA resin and soft liner without the use of blasting. Monomer may be

effective in increase the dissolution of the PMMA surface, providing greater bond strength¹⁸. Gundogdu et al.¹⁹ reported that the pretreatment with 36% phosphoric acid may result in an increased surface area, consequently increasing the tensile bond strength between the resilient lining and denture base material.

Regardless primer application, no statistically significant difference was observed in tensile bond strength when the specimens were submitted to thermocycling. According to Minami et al.¹², the increase in tensile bond strength is probably due to the extra polymerization provided by the warm bath in water, at a temperature of around 60°C.

Although accelerated aging increased the tensile bond strength in this study, this test generally negatively affects some mechanical properties of relining materials¹⁶. According to Goiato et al.¹⁵, thermocycling may lead to materials degradation by producing successive dilatations and contractions. Mancuso et al.^{10,20} affirm that resin-based soft liners have high absorption, solubility and color change after accelerated aging. According to Hermann et al.⁶ and Pinto JR et al.²¹, the clinical use simulated by thermocycling promotes loss of the plasticizers present in relining materials composition, increasing their hardness. These findings

corroborate with Goiato et al.^{22,23} who found greater hardness and color change in other studies.

This in vitro study has some limitations, i.e. the use of one relining material and a primer fabricated for silicone-based soft liner. This primer was selected because there is not a universal primer available on dentistry market that can be used for the surface treatment of PMMA resin and allow the use of any relining material. Additional studies should be performed using primers with more effective solvents and which can be applied on resin-based soft liners, in order to improve the tensile bond strength of these materials to the PMMA acrylic resin. Besides, the thermocycling simulates just the temperature changes, not considering some factors, i.e. the influence of mastication.

5. Conclusion

The primer application on the PMMA acrylic resin surface improved the tensile bond strength results, promoted a majority of cohesive failures and increased the tensile bond strength values of the resin-based soft liner and the PMMA acrylic resin. The clinical use of the evaluated primer is viable for resin-based soft liners.

References

- Akin H, Tugut F, Guney U, Kirmali O and Akar T. Tensile bond strength of silicone-based soft denture liner to two chemically different denture base resins after various surface treatments. *Lasers in Medical Science*. 2013; 28(1):119-123. <http://dx.doi.org/10.1007/s10103-012-1082-7>. PMID:22447403.
- Bolayır G, Demir H, Doğan A, Boztuğ A, Murat Doğan O and Soygun K. Effects of different high alkyl methacrylate monomers on tensile bond strength between resilient liner and acrylic resin. *Materials Research Innovations*. 2009; 13(4):431-435. <http://dx.doi.org/10.1179/143289109X12494867167288>.
- El-Hadary A and Drummond JL. Comparative study of water sorption, solubility, and tensile bond strength of two soft lining materials. *The Journal of Prosthetic Dentistry*. 2000; 83(3):356-361. [http://dx.doi.org/10.1016/S0022-3913\(00\)70140-5](http://dx.doi.org/10.1016/S0022-3913(00)70140-5). PMID:10709046.
- Cha HS, Yu B and Lee YK. Changes in stress relaxation property and softness of soft denture lining materials after cyclic loading. *Dental Materials*. 2011; 27(3):291-297. <http://dx.doi.org/10.1016/j.dental.2010.11.004>. PMID:21115193.
- Dayrell A, Takahashi J, Valverde G, Consani R, Ambrosano G and Mesquita M. Effect of sealer coating on mechanical and physical properties of permanent soft lining materials. *Gerodontology*. 2012; 29(2):e401-e407. <http://dx.doi.org/10.1111/j.1741-2358.2011.00487.x>. PMID:21535103.
- Hermann C, Mesquita MF, Consani RL and Henriques GE. The effect of aging by thermal cycling and mechanical brushing on resilient denture liner hardness and roughness. *Journal of Prosthodontics*. 2008; 17(4):318-322. <http://dx.doi.org/10.1111/j.1532-849X.2007.00293.x>. PMID:18266656.
- Silva J, Takahashi J, Nuñez J, Consani R and Mesquita M. Effect of accelerated ageing and surface sealing on the permanent deformation of auto-polymerising soft linings. *Gerodontology*. 2012; 29(3):188-193. <http://dx.doi.org/10.1111/j.1741-2358.2010.00419.x>. PMID:20825497.
- Can G, Özdemir T and Usanmaz A. Effect of thermocycling and treatment with monomer on mechanical properties of soft denture liner Molloplast B. *International Journal of Adhesion and Adhesives*. 2009; 29(8):812-814. <http://dx.doi.org/10.1016/j.ijadhadh.2009.07.002>.
- Kulak-Ozkan Y, Sertgoz A and Gedik H. Effect of thermocycling on tensile bond strength of six silicone-based, resilient denture liners. *The Journal of Prosthetic Dentistry*. 2003; 89(3):303-310. <http://dx.doi.org/10.1067/mp.2003.41>. PMID:12644808.
- Mancuso DN, Goiato MC, Zuccolotti BC, Moreno A, Santos DM and Pesqueira AA. Effect of thermocycling on hardness, absorption, solubility and colour change of soft liners. *Gerodontology*. 2012; 29(2):e215-e219. <http://dx.doi.org/10.1111/j.1741-2358.2010.00447.x>. PMID:21083743.
- Garcia RCMR, Leon BT, Oliveira VB and Del Bel Cury AA. Effect of a denture cleanser on weight, surface roughness, and tensile bond strength of two resilient denture liners. *The Journal of Prosthetic Dentistry*. 2003; 89(5):489-494. [http://dx.doi.org/10.1016/S0022-3913\(03\)00126-4](http://dx.doi.org/10.1016/S0022-3913(03)00126-4). PMID:12806327.
- Minami H, Suzuki S, Ohashi H, Kurashige H and Tanaka T. Effect of surface treatment on the bonding of an autopolymerizing soft denture liner to a denture base resin. *The International Journal of Prosthodontics*. 2004; 17(3):297-301. PMID:15237875.
- Mutluay MM and Ruyter IE. Evaluation of bond strength of soft relining materials to denture base polymers. *Dental Materials*. 2007; 23(11):1373-1381. <http://dx.doi.org/10.1016/j.dental.2006.11.014>. PMID:17222898.
- Sarac D, Sarac YS, Basoglu T, Yapici O and Yuzbasioglu E. The evaluation of microleakage and bond strength of a silicone-based resilient liner following denture base surface pretreatment. *The Journal of Prosthetic Dentistry*. 2006; 95(2):143-151. <http://dx.doi.org/10.1016/j.prosdent.2005.11.012>. PMID:16473089.
- Goiato MC, Zuccolotti BC, Moreno A, dos Santos DM, Pesqueira AA and Dekon SF. Colour change of soft denture liners after storage in coffee and coke. *Gerodontology*. 2011; 28(2):140-145. <http://dx.doi.org/10.1111/j.1741-2358.2009.00356.x>. PMID:20082643.

16. Park SK, Lee YK, Lim BS and Kim CW. Changes in properties of short-term-use soft liners after thermocycling. *Journal of Oral Rehabilitation*. 2004; 31(7):717-724. <http://dx.doi.org/10.1111/j.1365-2842.2004.01294.x>. PMID:15210035.
17. Philip JM, Ganapathy DM and Ariga P. Comparative evaluation of tensile bond strength of a polyvinyl acetate-based resilient liner following various denture base surface pre-treatment methods and immersion in artificial salivary medium: an in vitro study. *Contemporary Clinical Dentistry*. 2012; 3(3):298-301. <http://dx.doi.org/10.4103/0976-237X.103622>. PMID:23293485.
18. Kulkarni RS and Parkhedkar R. The effect of denture base surface pretreatments on bond strengths of two long term resilient liners. *The Journal of Advanced Prosthodontics*. 2011; 3(1):16-19. <http://dx.doi.org/10.4047/jap.2011.3.1.16>. PMID:21503188.
19. Gundogdu M, Yesil Duymus Z and Alkurt M. Effect of surface treatments on the bond strength of soft denture lining materials to an acrylic resin denture base. *The Journal of Prosthetic Dentistry*. 2014; 112(4):964-971. <http://dx.doi.org/10.1016/j.prosdent.2014.01.017>. PMID:24726594.
20. Mancuso DN, Goiato MC, Zuccolotti BC, Moreno A and dos Santos DM. Evaluation of hardness and colour change of soft liners after accelerated ageing. *Primary Dental Care*. 2009; 16(3):127-130. <http://dx.doi.org/10.1308/135576109788634232>. PMID:19566987.
21. Pinto JR, Mesquita MF, Nobilo MA and Henriques GEP. Evaluation of varying amounts of thermal cycling on bond strength and permanent deformation of two resilient denture liners. *The Journal of Prosthetic Dentistry*. 2004; 92(3):288-293. <http://dx.doi.org/10.1016/j.prosdent.2004.06.005>. PMID:15343166.
22. Goiato MC, Falcon-Antenucci RM, Santos DM and Pellizzer EP. Evaluation of hardness and color stability in the soft lining materials after thermocycling and chemical polishing. *Acta Odontologica Latinoamericana*. 2009; 22(1):63-68. PMID:19601498.
23. Goiato MC, Zucolotti BC, Santos DM, Moreno A and Alves-Rezende MC. Effects of thermocycling on mechanical properties of soft lining materials. *Acta Odontologica Latinoamericana*. 2009; 22(3):227-232. PMID:20302223.