

GENETIC DIVERSITY OF SIDEROPHORE-PRODUCING BACTERIA OF TOBACCO RHIZOSPHERE

Fang Tian^{1,2}; Yanqin Ding¹; Hui Zhu^{1,2}; Liangtong Yao¹; Binghai Du^{1*}

¹College of Life Sciences, Shandong Agricultural University, Key Laboratory of Agricultural Microbiology, Shandong Agricultural University, Tai'an, Shandong, P.R.China 271018; ²Baolingbao Biology co., Ltd, Yucheng, Shandong, P.R.China 251200

Submitted: April 05, 2008; Returned to authors for corrections: September 24, 2008; Approved: February 26, 2009.

ABSTRACT

The genetic diversity of siderophore-producing bacteria of tobacco rhizosphere was studied by amplified ribosomal DNA restriction analysis (ARDRA), 16S rRNA sequence homology and phylogenetics analysis methods. Studies demonstrated that 85% of the total 354 isolates produced siderophores in iron limited liquid medium. A total of 28 ARDRA patterns were identified among the 299 siderophore-producing bacterial isolates. The 28 ARDRA patterns represented bacteria of 14 different genera belonging to six bacterial divisions, namely β -, γ -, α -*Proteobacteria*, *Sphingobacteria*, *Bacilli*, and *Actinobacteria*. Especially, γ -*Proteobacteria* consisting of *Pseudomonas*, *Enterobacter*, *Serratia*, *Pantoea*, *Erwinia* and *Stenotrophomonas* genus encountered 18 different ARDRA groups. Results also showed a greater siderophore-producing bacterial diversity than previous researches. For example, *Sphingobacterium* (isolates G-2-21-1 and G-2-27-2), *Pseudomonas poae* (isolate G-2-1-1), *Enterobacter endosymbiont* (isolates G-2-10-2 and N-5-10), *Delftia acidovorans* (isolate G-1-15), and *Achromobacter xylosoxidans* (isolates N-46-11HH and N-5-20) were reported to be able to produce siderophores under low-iron conditions for the first time. Gram-negative isolates were more frequently encountered, with more than 95% total frequency. For Gram-positive bacteria, the *Bacillus* and *Rhodococcus* were the only two genera, with 1.7% total frequency. Furthermore, the *Pseudomonas* and *Enterobacter* were dominant in this environment, with 44.5% and 24.7% total frequency, respectively. It was also found that 75 percent of the isolates that had the high percentages of siderophore units (% between 40 and 60) belonged to *Pseudomonas*. *Pseudomonas* sp. G-229-21 screened out in this study may have potential to apply to low-iron soil to prevent plant soil-borne fungal pathogen diseases.

Key words: genetic diversity, siderophore, tobacco rhizosphere, ARDRA, rRNA sequencing.

INTRODUCTION

Tobacco is an important economic crop in China. However, soil-borne bacterial and fungal pathogen diseases cause severe losses annually because of succession planting. So effective plant growth-promoting rhizobacteria (PGPR) including siderophore-producing bacteria were used to prevent infectious diseases of plant roots (6,14).

Siderophores are low molecular weight (generally <10,000Da), iron-coordinating, organic compounds produced by most

aerobic and facultative anaerobic microorganisms to combat low-iron stress (11). Data showed that the excretion of siderophores by rhizosphere bacteria may stimulate plant growth by improving Fe nutrition of the plants (13) or by inhibiting the establishment of plant pathogens or other harmful microorganisms (8,19).

Production of siderophore and antifungal activity were simultaneously exhibited by free-living rhizospheric isolates of *Azotobacter* (16.22%), fluorescent *Pseudomonas* (11.11%) and *Bacillus* (10%) (1). The siderophore-producing *Pseudomonas*

*Corresponding Author. Mailing address: Daizong Road No. 61, Tai'an, Shandong, People's Republic of China. Tel.: +86-538-8247806. E-mail: bhdu@sdau.edu.cn

SF4c can increase the shoot and dry biomass of wheat by 23% and 45% under greenhouse conditions, respectively (5).

The pioneer works on tobacco rhizosphere microorganisms were concentrated on the isolation and identification of various rhizosphere microbes mainly using traditional physiological and biochemical methods (10,18). Recently, amplified ribosomal DNA restriction analysis (ARDRA) technique has been successfully used for bacterial diversity analysis in a great variety of environments, including soil and tobacco rhizosphere (4).

The aim of this work was to analyze the diversity of cultivable siderophore-producing bacteria of tobacco rhizosphere by ARDRA analysis and rDNA sequencing. Better knowledge of cultivable siderophore-producing bacteria composition in tobacco rhizosphere will undoubtedly contribute to screening for PGPR to prevention of tobacco soil-borne fungal pathogen diseases.

MATERIALS AND METHODS

Rhizosphere soil

Samples from tobacco plants were collected from two different locations (designated as locations 1 and 2) that were less than 0.1 km apart of Science Park of Zunyi Region (27°25'22" N, 106°33'22" E) in August 2006. Zunyi Region (Guizhou Province) is an important tobacco production base of the People's Republic of China, but soil-borne bacterial and fungal pathogen diseases cause severe losses annually in this base. The tobacco plants (NC-82) were grown in yellow soil (pH value is 6.36).

Bacterial isolation

Ten grams of each sample was dissolved in 90 ml of aseptic water. After appropriate dilutions, samples were spreaded to beef extract peptone agar medium (beef extract 0.3%, peptone 1%, NaCl 0.5%, agar 2%, w/v, pH 7.4~7.6). Plates were incubated at 30°C for 2 to 3 days. Bacterial isolates were obtained from agar plates presenting between 30 and 150 colonies. Stock cultures were prepared in aseptic water supplemented with glycerol and kept frozen at -80°C prior to use.

Screening of siderophore-producing bacterial isolates

Modified CAS-liquid medium (MM9, Tris buffer, casamino acids 0.3%, sucrose 0.2%, thiamine-HCl 0.0002%, and succinate 0.2%, w/v) (2) was used to screen siderophore-producing bacteria. The detection experiment was repeated three times. Siderophore production of the isolates were detected by CAS-liquid medium and CAS agar plates with a little modified (200 ml of blue agar with 20 ml resultant dark blue liquid, 150 ml double distilled-deionized water, 20 ml 10× MM9 salts, 3 g agar, 2.4 g of a 50% (w/w) NaOH solution, 6 ml casamino acids (10%, w/v), 2 ml glucose (10%, w/v), 0.2 ml thiamine-HCl (0.2%, w/v), and 0.6 ml L-tryptophan (1%, w/v)) (20), respectively. The siderophore production was evaluated as siderophore units (%) in liquid

medium (12). Double distilled-deionized water was used to prepare all media and reagents. Glasswares were soaked for three days in 6 M HCl and rinsed with distilled-deionized water several times to remove traces of iron.

Total DNA extraction and PCR amplification

The DNA of bacterial isolates was prepared according to the procedures of Murray and Thompson (15) with the exception that for Gram-positive bacteria, no Lysozyme was used. The amplified 16S rRNA gene was obtained from each isolate by PCR with the universal primer P1 (5'-AGAGTTTGATCCTGGTCAGAACGCT-3') and P6 (5'-TACGGCTACCTGTTACGACTTCACCCC-3'), which were targeted to universally conserved regions and permitted the amplification of an approximate 1, 500-bp fragment. PCR was carried out in a Biometra TGRADIENT thermocycler (Whatman Biometra, Göttingen, Germany). 50 µl reaction volume contained about 25 ng of DNA extract, 2.5 U of *Taq*TM DNA polymerase (TaKaRa Biotechnology (Dalian) Co., Ltd.), 1× buffer (10 mM Tris-HCl [pH 8.3], 1.5 mM MgCl₂, 500 mM KCl), 0.2 mM deoxynucleoside triphosphate (each), and 0.4 µM of each primer. Initial DNA denaturation and enzyme activation steps were performed at 95°C for 5 min, followed by 35 cycles of denaturation at 94°C for 1 min, annealing at 56°C for 30 s and extension at 72°C for 1.5 min, and a final extension at 72°C for 10 min. The presence and yield of specific PCR product (16S rRNA gene) was monitored by 1% agarose (w/v) gel electrophoresis at 80 V for 1 h in 1× Tris-Boric Acid-EDTA (TBE) buffer and made visible by ethidium bromide staining and UV transillumination. The images of the agarose gels were documented using a UVP GelDoc-It Imaging System (UVP Inc. USA) under an ultraviolet lamp.

ARDRA and rarefaction analysis of siderophore-producing bacterial isolates

PCR products were purified using the 3S Spin PCR Product Purification Kit (Shenergy Biocolor Bioscience and Technology Company, P. R. China) following the manufacturer's instructions. Purified PCR products were digested with the four chosen enzymes *Alu* I, *Hae* III, *Hinf* I, and *Msp* I (TaKaRa Biotechnology (Dalian) Co., Ltd.) in separated reactions. The selection of the four restriction enzymes was based on the studies of Laguerre *et al.* (9). The digestions were performed for 4 h at 37°C in 10 µl reaction volume containing 5 µl of purified PCR products, 1 µl of the commercially supplied incubation 10× buffers, 3.5 µl of water, and 0.5 µl (10 U/µl) of the restriction enzyme. Reaction products (10 µl) were run on a 3% (w/v) agarose gel in 1× TBE buffer for 4 h at 100 V under refrigeration. Agarose gels were stained, visualized and digitalized as described above. The visible bands greater than 100 bp were used to construct the dendrogram. For each restriction enzyme's band, a binary data matrix was constructed on the basis of the presence or absence of each band (coded as 1 or 0, respectively). The band patterns

obtained with each enzyme were combined to obtain a single pattern for each isolate. The patterns were used to construct a dendrogram by using the unweighted pair group method using arithmetic averages (UPGMA), clustering algorithm using the Sorensen's Coefficient along with the fine optimization option with MultiVariate Statistical Package (MVSP) version 3.13h (GeoMem, Blairgowrie, United Kingdom). Diversity of siderophore-producing bacterial isolates was further investigated by rarefaction analysis. Rarefaction curves were produced by using the analytical approximation algorithm of Hurlbert (7). Calculations were performed on a personal computer with the freeware program aRarefactWin (<http://www.uga.edu/strata/software/>).

16S rRNA gene sequencing and sequence analysis

Purified PCR products obtained from isolates of each ARDRA group were sequenced. The Nucleotide-nucleotide BLAST (blastn) of the National Center for Biotechnology Information database, accessible on the internet (<http://www.ncbi.nlm.nih.gov/BLAST/>) was used to find nearly identical sequences for the 16S rRNA gene sequences determined. The higher similarity sequences and the 16S rRNA gene sequences of type strains were retrieved from the Ribosomal Database Project a! (<http://rdp.cme.msu.edu/>). Sequences were aligned using the CLUSTAL X software version 1.8 (<ftp://ftp-igbmc.u-strasbg.fr/pub/ClustalX/>). The evolutionary distances were calculated using the software package TREECON version 1.3b (<http://bioc-www.uia.ac.be/u/yvdp/treeconw.html>). The construction of neighbor-joining tree and bootstrap analysis of 1000 resamplings were performed using software package TREECON too.

RESULTS

Bacterial isolation

Bacteria were isolated from tobacco rhizosphere soil at densities ranging from 6.73 to 7.86 log CFU/g (dry weight). A total of 354 isolates were obtained from the soil samples of tobacco rhizosphere (166 isolates from location 1, 188 isolates from location 2).

Screening of siderophore-producing bacterial isolates

Two hundred and ninety nine isolates (143 isolates from location 1, 156 isolates from location 2) produced siderophores in iron limited liquid medium. Ninety-nine percent of the isolates produced big or small size of orange halos on CAS agar plates, except for the isolates PC-1012, PC-1011, P-6-3h, and G-2-17-1 which couldn't grow on CAS agar plates (Fig. 1). The siderophores production was evaluated as siderophore units (%). Result showed that more than 75% total frequency of the siderophore-producing strains had the siderophore units (%) between 20 and 40. All of the other strains had the siderophore units (%) between 40 and 60 with less than 25% total frequency.

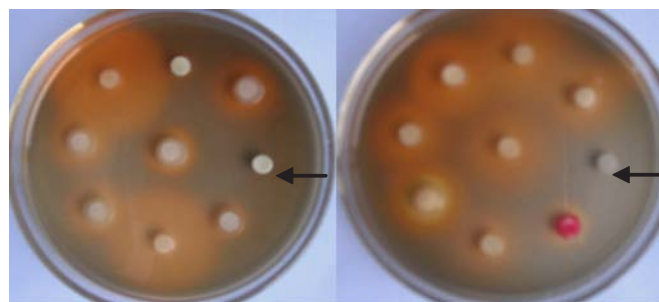


Figure 1. Screening of siderophore-producing bacterial isolates using CAS agar plates. The arrows indicated the isolates PC-1012 (the left one), and G-2-17-1 (the right one) which couldn't grow on CAS agar plates. The circles in the center of the orange halos were filter papers soaked up with bacterial supernatant.

ARDRA analysis of siderophore-producing bacterial isolates

Total 299 siderophore-producing isolates were subjected to ARDRA analysis by digestion of the amplified 16S rRNA gene with the four restriction enzymes. Similar banding patterns obtained after combination of the four independent digestions (Fig. 2) were grouped to finally obtain a total of 28 groups (location 1 and location 2 contained 28 groups, respectively) (Table 2). As shown in Fig. 2, each group presented a specific banding pattern, and groups of different species were clearly differentiated, with a similarity lower than 95%.

Rarefaction analysis of the siderophore-producing bacterial isolates

Rarefaction analysis was used to estimate how percent of the biodiversity was sampled (Fig. 3). Results showed that by screening of 140 siderophore-producing bacterial isolates, the rarefaction curves reached saturation for both samples of the two locations and the variation between the two samples was minimal, that is to say, the repetition rate was well between the two samples (Table 2).

For the fact that there had no isolate in the two locations was unique, the rarefaction analysis suggests that 299 bacterial isolates is sufficient to circumscribe the siderophore-producing bacterial diversity of tobacco rhizosphere.

Sequencing and phylogeny of 16S rRNA gene of siderophore-producing isolates

Representative isolates of each group were selected for partial 16S rRNA gene sequencing so as to retrieve sequence similarity and bacterial identity from NCBI (Table 1). After partial sequencing of the 16S rRNA gene of ARDRA group representatives, closest identities of isolates were retrieved from NCBI. Results showed a strong similarity with NCBI sequences, like those of group 10, 17, 26, and 28, were strongly related to

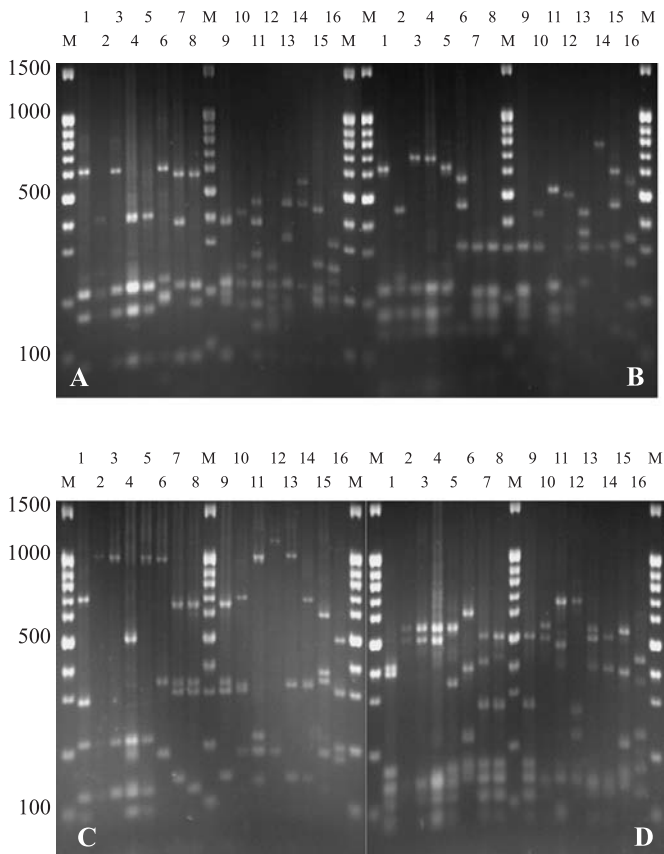


Figure 2. 16S-ARDRA patterns obtained from restriction digestion gel photos with *Alu* I, *Hae* III, *Hinf* I, and *Msp* I. Lanes (1-16) represent the ARDRA groups 1, 2, 4, 7, 10, 11, 12, 13, 14, 17, 18, 21, 24, 25, 26, and 27. Lanes M are the marker 100 bp + 1.5 kb DNA ladder; A, B, C, and D represent restriction digestion gel photos with *Alu* I, *Hae* III, *Hinf* I, and *Msp* I.

NCBI sequences, with 100% similarity (Table 1). Relatedness between isolate and type strain sequences was demonstrated in Fig. 4 and Fig. 5. Isolates were therefore clustered in six different classes: β -, γ -, α -*Proteobacteria*, *Sphingobacteria*, *Bacilli*, and *Actinobacteria*. γ -*Proteobacteria* which consisted of *Pseudomonas*, *Enterobacter*, *Serratia*, *Pantoea*, *Erwinia* and *Stenotrophomonas* genus encountered 18 different ARDRA groups.

Distribution of siderophore-producing isolates

Table 1 demonstrated a wide variety of siderophore-producing bacteria, with 14 different genera encountered. Gram-negative isolates were more frequently encountered, with 289 isolates, compared to 10 Gram-positive isolates. Distribution of siderophore-producing isolates according to ARDRA groups

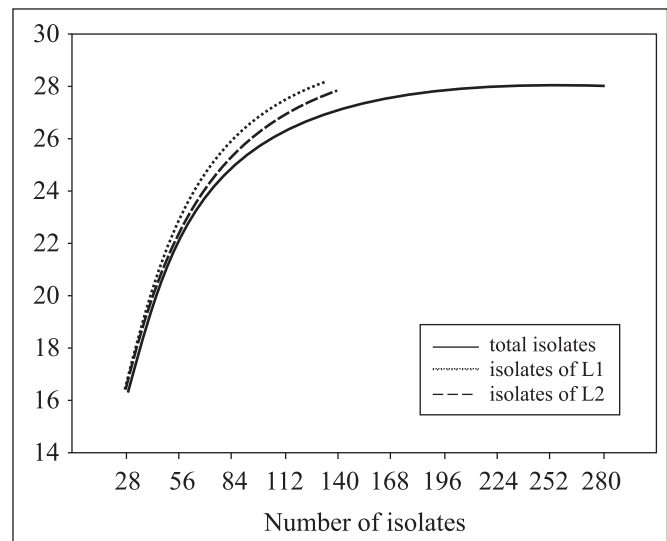


Figure 3. Rarefaction curves for the different ARDRA patterns of all the siderophore-producing bacterial isolates used in this study. The expected number of ARDRA patterns is plotted versus the number of isolates. Rarefaction curves were also calculated for the fraction of L1 and L2. L1: location 1; L2: location 2.

(Table 2) revealed that groups 1, 2, 3, 4, 5, 6, 7, 8, 9, 10, 12, 13, 14, 15, and 16 had the most numerous isolates and that these groups belonged to Gram-negative bacteria corresponding to the *Pseudomonas* and *Enterobacter* genera with 44.5% and 24.7% total frequency, respectively. That is to say, the siderophore-producing *Pseudomonas* isolated from tobacco rhizosphere soil ranged from 6.38 to 6.51 log CFU/g (dry weight). For Gram-positive bacteria, group 25 and 28 were the only two groups corresponding to the *Bacillus* and *Rhodococcus* genera, with 1.7% total frequency, respectively.

DISCUSSION

The diversity of cultivable siderophore-producing bacteria of tobacco rhizosphere was characterized in this study. Results have demonstrated that 85% of the total 354 isolates produced siderophores in iron limited liquid medium and a total of 28 ARDRA patterns were identified among the 299 siderophore-producing bacterial isolates. The 28 ARDRA patterns represented bacteria of 14 different genera belonging to six bacterial divisions, namely β -, γ -, α -*Proteobacteria*, *Sphingobacteria*, *Bacilli*, and *Actinobacteria*. Especially, γ -*Proteobacteria* which consisted of *Pseudomonas*, *Enterobacter*, *Serratia*, *Pantoea*, *Erwinia* and *Stenotrophomonas* genus encountered 18 different ARDRA groups. Gram-negative isolates were more frequently

Table 1. List of siderophore-producing bacterial isolates obtained in this study representing each ARDRA group and their closest affiliation according to sequencing of 16S rRNA gene.

Isolate	ARDRAgroup	Accession no.	Closest NCBI Strain and Accession no.	Sid	Similarity(%)
G-1-19-1	1	EF102853	<i>Pseudomonas</i> sp., AB076857	(+)	99.3
G-1-21-2	1	EF102855	<i>Pseudomonas</i> sp., AB076857	(+)	99.9
G-1-11-12	1	EF102854	<i>Pseudomonas</i> sp., AB076857	(+)	99.6
G-5-14	1	EF102857	<i>Pseudomonas</i> sp., DQ118954	(+)	99.4
G-229-21	2	EF102850	<i>Pseudomonas</i> sp., AF456229	(+)	99.6
G-229-22	2	EF102851	<i>Pseudomonas</i> sp., AF456229	(+)	99.6
G-229-23	2	EF102852	<i>Pseudomonas</i> sp., AF456229	(+)	99.8
G-6-9-2	3	EF102858	<i>Pseudomonas</i> sp., DQ453823	(+)	99.8
G-2-1-1	4	EF102856	<i>Pseudomonas poae</i> , DQ536513	(-)	99.3
N-5-143XBH	5	EF102848	<i>Pseudomonas putida</i> , DQ449024	(+)	99.4
G-4-14-1	6	EF102849	<i>Pseudomonas putida</i> , DQ886481	(+)	99.9
G-4-1-2	7	EF102847	<i>Pseudomonas putida</i> , DQ886481	(+)	99.3
G-229-2	8	EF102839	<i>Pseudomonas aeruginosa</i> , CP000438	(+)	99.9
NB-17-1	9	EF102841	<i>Pseudomonas aeruginosa</i> , CP000438	(+)	99.9
P-5-3	9	EF102842	<i>Pseudomonas aeruginosa</i> , CP000438	(+)	99.2
PB-5-2	9	EF102843	<i>Pseudomonas aeruginosa</i> , CP000438	(+)	100.0
GA-15-1	9	EF102837	<i>Pseudomonas aeruginosa</i> , CP000438	(+)	99.0
G-229-1	10	EF102838	<i>Pseudomonas aeruginosa</i> , CP000438	(+)	97.8
GA-8-1	10	EF102840	<i>Pseudomonas aeruginosa</i> , CP000438	(+)	100.0
PB-6-1	10	EF102844	<i>Pseudomonas aeruginosa</i> , CP000438	(+)	100.0
PB-9-2	10	EF102845	<i>Pseudomonas aeruginosa</i> , CP000438	(+)	100.0
G-1-7	11	EF102835	<i>Pectobacterium carotovorum</i> , AY207086	(+)	99.1
G-1-5-1	11	EF102836	<i>Pectobacterium carotovorum</i> , AY207086	(+)	99.6
G-4-13-2	12	EF102834	<i>Pantoea agglomeran</i> , AM184214	(+)	99.0
G-226-1	12	EF102825	<i>Enterobacter aerogenes</i> , AB099402	(+)	99.6
G-2-10-2	13	EF102826	<i>Enterobacter endosymbiont</i> , AY753172	(+)	99.2
N-5-10	13	EF102824	<i>Enterobacter endosymbiont</i> , AY753172	(+)	99.1
P-6-4R	14	EF102862	<i>Serratia marcescens</i> , AY043386	(+)	99.8
P-4-8R	15	EF102860	<i>Serratia marcescens</i> , AY514435	(+)	99.5
P-6-14RR	15	EF102863	<i>Serratia marcescens</i> , AY514435	(+)	99.8
P-4-8RR	16	EF102861	<i>Serratia marcescens</i> , AY514432	(+)	99.1
G-1-15	17	EF102823	<i>Delftia acidovorans</i> , AM180725	(-)	100.0
G-5-5-1	18	EF102868	<i>Stenotrophomonas maltophilia</i> , AJ306833	(-)	99.7
P-2-13	19	EF102866	<i>Stenotrophomonas maltophilia</i> , AY486381	(-)	99.7
P-5-22	19	EF102867	<i>Stenotrophomonas maltophilia</i> , AY486381	(-)	98.3
P-5-2	20	EF102833	<i>Ochrobactrum</i> sp., DQ486950	(+)	98.8
G-1-22	21	EF102818	<i>Agrobacterium tumefaciens</i> , AB247617	(+)	98.8
N-46-11HH	22	EF102816	<i>Achromobacter xylosoxidans</i> , AY631060	(-)	99.4
N-5-20	23	EF102817	<i>Achromobacter xylosoxidans</i> , AF411021	(-)	99.7
G-4-3-1	24	EF102820	<i>Alcaligenes faecalis</i> , AJ509012	(+)	99.7
G-1-6	25	EF102819	<i>Alcaligenes</i> sp., DQ211905	(+)	99.1
PC-1012	26	EF102822	<i>Bacillus subtilis</i> , DQ012095	(+)	100.0
PC-1011	26	EF102821	<i>Bacillus subtilis</i> , DQ012095	(+)	100.0
G-2-21-1	27	EF102864	<i>Sphingobacterium</i> sp., AY556417	(-)	99.3
G-2-27-2	27	EF102865	<i>Sphingobacterium</i> sp., AY556417	(-)	99.3
G-2-17-1	28	EF102859	<i>Rhodococcus erythropolis</i> , DQ858961	(+)	100.0

Accession no.: GenBank accession number; Sid: siderophore; have been reported to produce siderophores (+); not have been reported to produce siderophores (-)

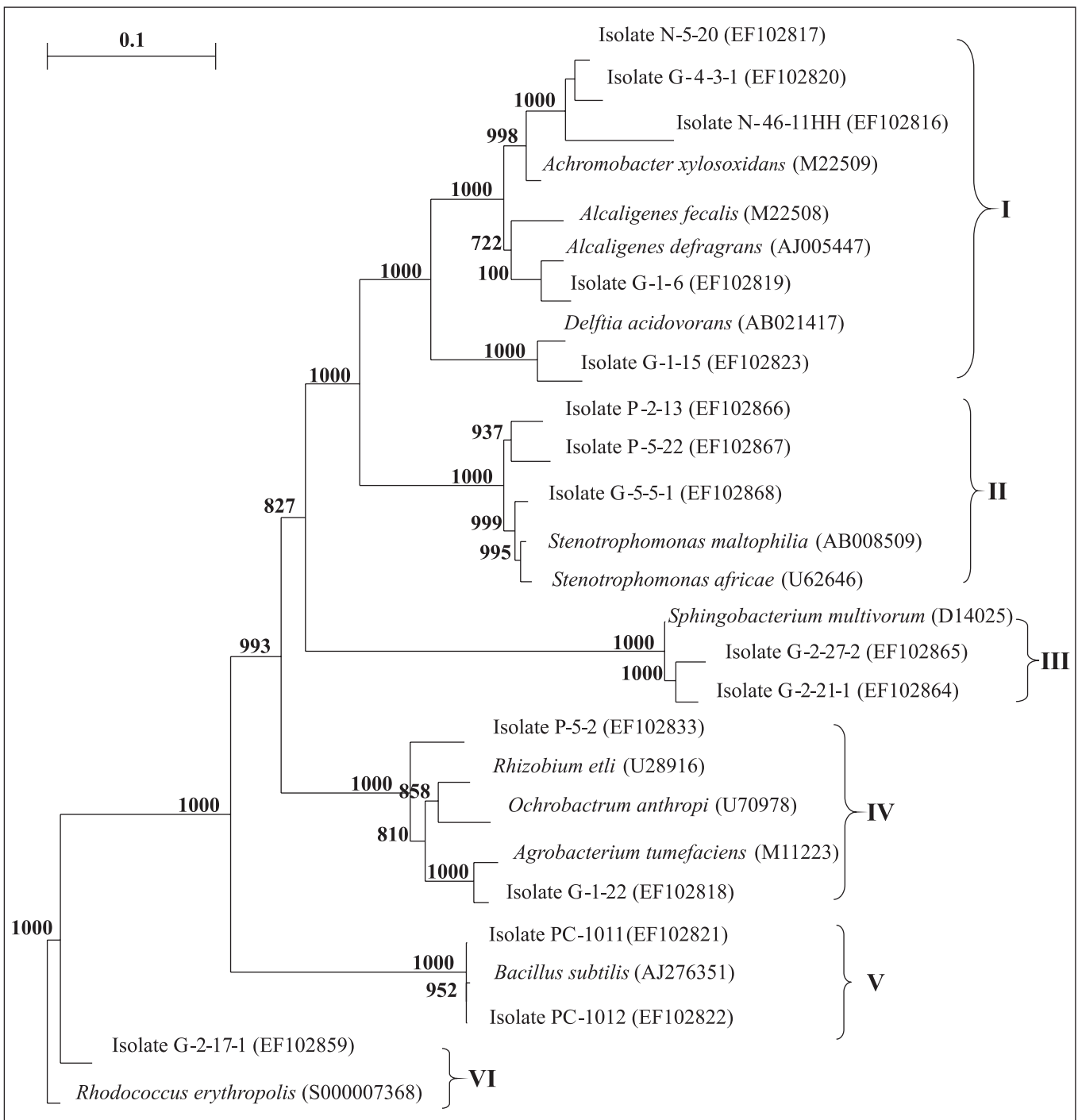
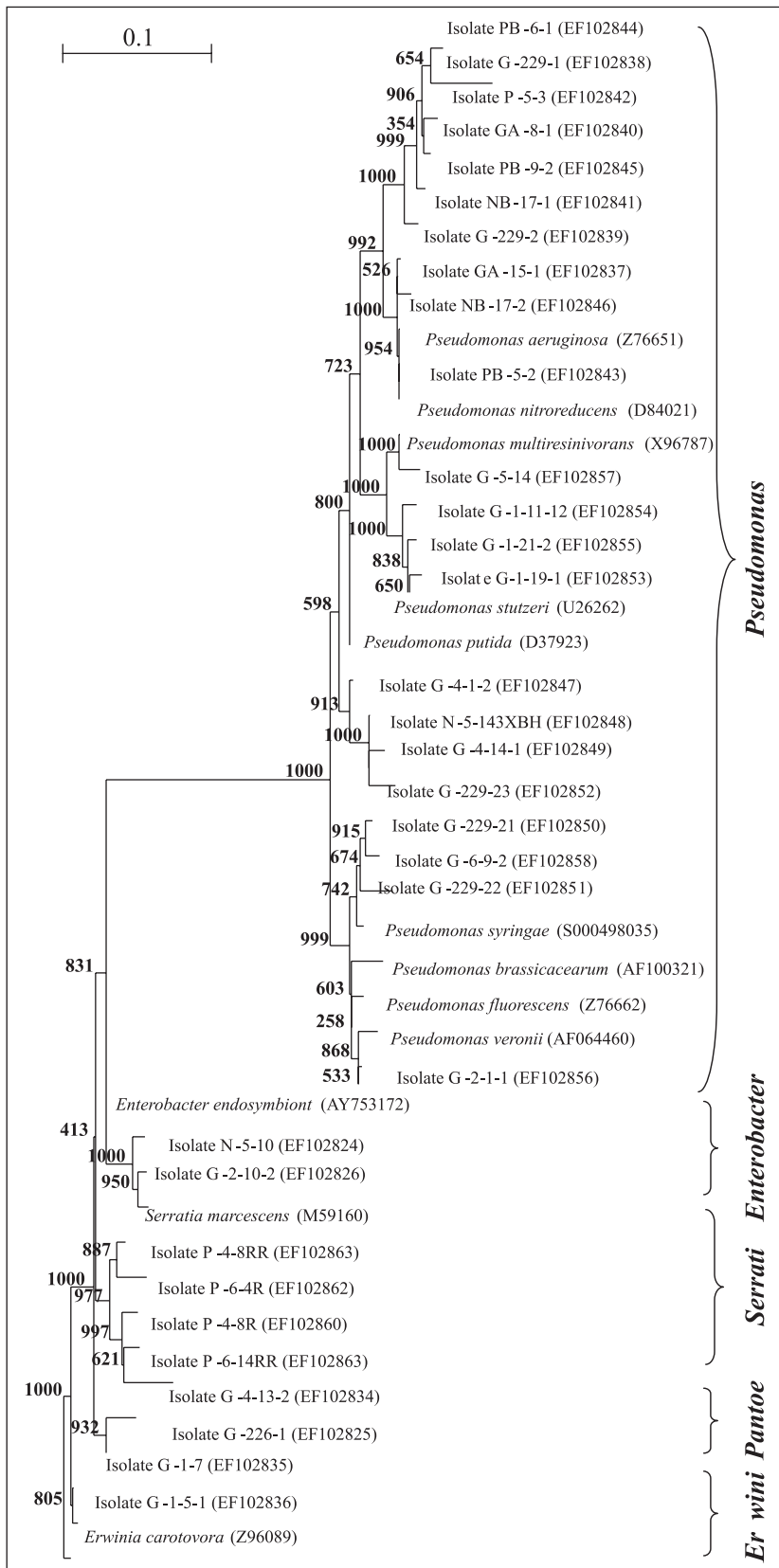


Figure 4. A neighbor-joining phylogenetic tree based on 16S rRNA gene sequences of siderophore-producing representative strains. The tree contains the closest type strain for each isolate which belong to I, II, III, IV, V, and VI class, respectively. Bootstrap analyses were made with 1000 cycles. Only bootstrap values of > 50% are shown at the branch points. The scale bar represents 0.1 substitutions per nucleotide. I, II, III, IV, V, and VI indicated β -Proteobacteria, γ -Proteobacteria (*Xanthomonadaceae*), *Spingobacteria*, α -Proteobacteria, *Bacilli*, and *Actinobacteria* class, respectively.



encountered, with more than 95% total frequency. Furthermore, the *Pseudomonas* and *Enterobacter* were dominant in this environment, with 44.5% and 24.7% total frequency, respectively. For Gram-positive bacteria, the *Bacillus* and *Rhodococcus* were the only two genera, with 1.7% total frequency, respectively.

Seventy five percent of the isolates that had the siderophore units (%) between 40 and 60 belonged to *Pseudomonas* genus. This observation was also made by Alexander (2) who had found that most of the siderophore-producing isolates coming from the roots of two grass species belonged to the genus *Pseudomonas*. The presence of the genus *Pseudomonas* was expected due to its importance in plant rhizosphere ecosystems, in relation notably with its siderophore-mediated suppression and inducing local systemic host resistance activities (16, 17).

It was excited to find that *Sphingobacterium* sp. G-2-21-1 and G-2-27-2 had the siderophore units (%) between 40 and 60; in our knowledge, it was the first time to report that genus *Sphingobacterium* can produce siderophores under low-iron conditions. We also reported that *P. poae* (isolate G-2-1-1), *Enterobacter endosymbiont* (isolates G-2-10-2 and N-5-10), *Delftia acidovorans* (isolate G-1-15), and *A. xylosoxidans* (isolates N-46-11HH and N-5-20) can produce siderophores under low-iron conditions for the first time. These eight bacterial isolates are potential to be examined for their capability in enhancing plant growth. Furthermore, we also reported that *Pseudomonas* sp. G-229-21 could produce high-affinity carboxylate type siderophores under low iron conditions and its siderophores

Figure 5. A neighbor-joining phylogenetic tree based on 16S rRNA gene sequences of siderophore-producing strains. The tree contains the closest type strain for each isolate which belong to *Pseudomonas*, *Serratia*, *Enterobacter*, *Pantoea*, and *Erwinia* genera, respectively. Bootstrap analyses were made with 1000 cycles. Only bootstrap values of > 50% are shown at the branch points. The scale bar represents 0.1 substitutions per nucleotide.

Table 2. Distribution of siderophore-producing bacterial isolates of tobacco rhizosphere according to ARDRA groups and restriction patterns.

Group No.	ARDRA banding pattern according to restriction enzyme used				Numbers of isolates			Group total frequency (%)		
	<i>Alu</i> I	<i>Hae</i> III	<i>Hinf</i> I	<i>Msp</i> I	L1	L2	L1/2	L1	L2	L1/2
1	A	A	A	A	11	12	23	3.7	3.9	7.6
2	B	B	B	B	7	9	16	2.3	3.1	5.4
3	C	C	B	B	4	4	8	1.3	1.4	2.7
4	D	C	B	B	7	9	16	2.2	3.2	5.4
5	C	C	C	B	5	3	8	1.6	1.1	2.7
6	C	C	C	C	3	2	5	1.0	0.7	1.7
7	C	D	C	D	10	11	21	3.3	3.7	7.0
8	C	E	B	E	2	3	5	0.7	1.0	1.7
9	C	F	B	F	6	7	13	2.0	2.3	4.3
10	C	F	B	E	8	10	18	2.7	3.3	6.0
11	E	G	D	G	7	6	13	2.3	2.0	4.3
12	F	H	E	H	19	21	40	6.2	7.1	13.3
13	F	H	F	H	7	9	16	2.3	3.1	5.4
14	G	H	E	H	3	2	5	1.0	0.7	1.7
15	H	H	F	H	4	6	10	1.3	2.0	3.3
16	G	I	G	H	2	1	3	0.7	0.3	1.0
17	I	H	H	I	1	2	3	0.3	0.7	1.0
18	J	I	I	J	5	3	8	1.7	1.0	2.7
19	K	I	I	K	5	5	10	1.6	1.7	3.3
20	L	J	J	L	2	1	3	0.7	0.3	1.0
21	M	J	J	L	4	4	8	1.3	1.4	2.7
22	N	K	K	M	1	2	3	0.3	0.7	1.0
23	O	L	J	N	4	6	10	1.3	2.0	3.3
24	O	L	J	O	4	4	8	1.3	1.4	2.7
25	P	M	L	P	2	3	5	0.7	1.0	1.7
26	Q	N	M	R	3	5	8	1.0	1.7	2.7
27	R	O	N	S	4	4	8	1.3	1.4	2.7
28	S	P	O	T	3	2	5	1.7	1.0	1.7
Total	19	16	15	20	143	156	299	47.8	52.2	100.0

L1: isolates of location 1; L2: isolates of location 2; L1/2: the total isolates of location 1 and 2.

were capable of antagonising against *Phytophthora parasitica* var. *nicotianae* (Breda de Hann) Tucker strongly under low iron conditions (21).

In addition, the predominant presence of Gram-negative siderophore-producing bacteria isolated from tobacco rhizosphere may be due in part to the use of CAS agar plates. Because Gram-positive bacteria were especially sensitive to the HDTMA used in the CAS agar plates (20).

Although the samples were all collected from acerbic tobacco rhizosphere, we had detected a large number of siderophore-producing bacteria under low-iron conditions. It indicated that the producing of siderophores was induced by low iron stress.

At the same time, 36.4% of the total tobacco in China are planted in neutral and alkaline low-iron soil (3), so the siderophore-producing bacteria screened out in this study have great potential to apply to low-iron soil to prevent plant soil-borne fungal pathogen diseases (concerned greenhouse experimentations are in progress).

ACKNOWLEDGEMENTS

This work was funded by the Research Award Fund for Outstanding Middle-aged and Young Scientist of Shangdong Province (People's Republic of China) (2006BS06012). We thank

Dr. Jie Liu for assistance with ARDRA procedure and phylogenetic analyses, Dr. Guang-yi Wang at the University of Hawaii for revising the manuscript and Mr. Xian-ming Zeng for his work on soil and root samples collection.

RESUMO

Diversidade genética de bactérias de rizosfera de tabaco produtoras de sideróforos

A diversidade genética de bactérias de rizosfera de tabaco produtoras de sideróforos foi estudada por meio da técnica de análise de restrição do DNA ribossomal amplificado (ARDRA), homologia de seqüência de 16s rRNA e métodos de análise filogenética. Observou-se que 85% do total de 354 isolados produziram sideróforos em meio líquido com restrição de ferro. Entre os 299 isolados produtores de sideróforos identificou-se 28 padrões ARDRA, que representaram 14 gêneros bacterianos diferentes, pertencentes a seis divisões bacterianas: β -, γ -, α -*Proteobacteria*, *Sphingobacteria*, *Bacilli* e *Actinobacteria*. γ -*Proteobacteria*, consistindo de *Pseudomonas*, *Enterobacter*, *Serratia*, *Pantoea*, *Erwinia* e *Stenotrophomonas*, pertenceram a 18 grupos ARDRA. Os resultados também mostraram uma diversidade maior de bactérias produtoras de sideróforos do que a relatada em outros estudos. Por exemplo, *Sphingobacterium* (isolados G-2-21-1 e G-2-27-2), *Pseudomonas poae* (isolado G-2-1-1), *Enterobacter endosymbiont* (isolados G-2-10-2 e N-5-10), *Delftia acidovorans* (isolado G-1-15) e *Achromobacter xylosoxidans* (isolados N-46-1HH e N-5-20), capazes de produzir sideróforos em condições de baixa disponibilidade de ferro, foram relatados pela primeira vez. Isolados Gram negativos foram encontrados com maior frequência, correspondendo a mais de 95% da frequência total. Entre as bactérias Gram positivas, foram encontrados apenas os gêneros *Bacillus* e *Rhodococcus*, com 1,7% da frequência total. Além disso, neste ambiente houve predominância de *Pseudomonas* e *Enterobacter*, com 44,5% e 24,7% da frequência total, respectivamente. Verificou-se também que 75% dos isolados com alta porcentagem de unidades de sideróforos (% entre 40 e 60) pertenceram a *Pseudomonas*. *Pseudomonas* sp. G-229-21, selecionado neste estudo, apresenta potencial de aplicação em solos com baixo teor de ferro para prevenção de doenças fúngicas em plantas.

Palavras-chave: diversidade genética, sideróforos, rizosfera de tabaco, ARDRA, sequenciamento de rRNA.

REFERENCES

- Ahmad, F.; Ahmad, L.; Khan, M.S. (2008). Screening of free-living rhizospheric bacteria for their multiple plant growth promoting activities. *Microbiol. Res.*, 163, 173-181.
- Alexander, D.B.; Zuberer, D.A. (1991). Use of chrome azurol s reagents to evaluate siderophore production by rhizosphere bacteria. *Biol. Fertils. Soils.*, 12, 39-45.
- Chen, J.H.; Li, Z.H.; Liu, J.L.; Wang, G.; Long, H.Y.; Lei, Q.L.; Zhang, R.L.; Zhang, W.L. (2004). Evaluation of soil nutrients condition in major tobacco production region of China. *Acta Tabacaria Sinica.*, 10, 14-18. (in Chinese with English abstract).
- D'Angelo-Picard, C.; Faure, D.; Penot, I.; Dessaux, Y. (2005). Diversity of N-acyl homoserine lactone-producing and-degrading bacteria in soil and tobacco rhizosphere. *Environ. Microb.*, 7, 1796-1808.
- Fischer, S.E.; Fischer, S.I.; Magris, S.; Mori, G.B. (2006). Isolation and characterization of bacteria from the rhizosphere of wheat. *World J. Microbiol. Biotechnol.*, 23, 895-903.
- Haas, D.; Defago, G. (2005). Biological control of soil-borne pathogens by fluorescent *pseudomonas*. *Nat. Rev. Microbiol.*, 3, 307-319.
- Hurlbert, S.H. (1971). The nonconcept of species diversity: a critique and alternative parameters. *Ecology.*, 52, 577-586.
- Kloepper, J.W.; John, L.; Teintze, M. (1980). Enhanced plant growth by siderophores produced by plant growth-promoting rhizobacteria. *Nature.*, 286, 885-886.
- Laguette, G.; Allard, M.R.; Revoy, F.; Amarger, N. (1994). Rapid identification of *Rhizobia* by restriction fragment length polymorphism analysis of PCR-amplified 16S rRNA genes. *Appl. Environ. Microb.*, 60, 56-63.
- Liu, X.L.; Wang, C.; Wu, F.; Xue, D.H.; Chen, K. (2006). Studies on tobacco rhizosphere microbes. *Acta Ecologica Sinica.*, 26, 552-557. (in Chinese with English abstract).
- Neilands, J.B.; Leong, S.A. (1986). Siderophores in relation to plant growth and disease. *Annu. Rev. Plant Physiol.*, 37, 187-208.
- Machuca, A.; Milagres, A.M.F. (2003). Use of CAS-agar plate modified to study the effect of different variables on siderophore production by *Aspergillus*. *Lett. Appl. Microbiol.*, 36, 177-181.
- Masalha, J.; Kosegarten, H.; Elmaci, Ö.; Mengel, K. (2000). The central role of microbial activity for iron acquisition in maize and sunflower. *Biol. Fertils. Soils.*, 30, 433-439.
- Motta, A.S.; Cladera-Olivera, F.; Brandelli, A. (2004). Screening for antimicrobial activity among bacteria isolated from the Amazon Basin. *Braz. J. Microbiol.*, 35, 307-310.
- Murray, M.G.; Thompson, W.F. (1980). Rapid isolation of high molecular weight plant DNA. *Nucl. Acids Res.*, 8, 4321-4326.
- O'Sullivan, N.J.; O'Gara, F. (1992). Traits of fluorescent *Pseudomonas* spp. involved in suppression of plant root pathogens. *Microbiol. Rev.*, 56, 662-676.
- Ran, L.X.; Liu, C.Y.; Wu, G.J.; van Loon, L.C.; Bakker, P.A.H.M. (2005). Suppression of bacterial wilt in *Eucalyptus urophylla* by fluorescent *Pseudomonas* spp. in China. *Biol. Control.*, 32, 111-120.
- Reche, M.H.L.R.; Fiuza, L.M. (2005). Bacterial diversity in Rice-field water in Rio Grande do Sul. *Braz. J. Microbiol.*, 36, 253-257.
- Schroth, M.N.; Hancock, J.G. (1982). Disease-suppressive soil and root-clonizing bacteria. *Science.*, 216, 1376-1381.
- Schwyn, B.; Neilands, J.B. (1987). Universal chemical assay for the detection and determination of siderophores. *Anal. Biochem.*, 160, 47-56.
- Tian, F.; Ding, Y.Q.; Zhu, H.; Yao, L.T.; Jin, F.L.; Du, B.H. (2008). Screening, identification and antagonistic activity of a siderophore producing bacteria G-229-21T from rhizosphere of tobacco. *Wei Sheng Wu Xue Bao.*, 48(5), 631-637. (in Chinese with English abstract).