



Acanthoceras and *Urosolenia* species (Diatomeae) in subtropical reservoirs from South Brazil: Ultrastructure, distribution and autoecology

Priscila Izabel Tremarin^{1,2}, Eduardo Gomes Freire¹, Vanessa Majewski Algarte¹ & Thelma Veiga Ludwig¹

¹Departamento de Botânica, Universidade Federal do Paraná, Curitiba, PR, Brazil.

²Corresponding author: Priscila Izabel Tremarin, e-mail: ptremarin@gmail.com

TREMARIN, P.I., FREIRE, E.G., ALGARTE, V.M., LUDWIG, T. *Acanthoceras* and *Urosolenia* species (Diatomeae) in subtropical reservoirs from South Brazil: Ultrastructure, distribution and autoecology. Biota Neotropica. 15(1): e20140043. <http://dx.doi.org/10.1590/1676-06032014004314>

Abstract: *Acanthoceras* Honigmann and *Urosolenia* Round & Crawford *emend.* Rott, Kling & McGregor species were studied based on samples of 19 hydroelectric power plants reservoirs located in the State of Paraná, Southern Brazil. Autoecological informations of *Urosolenia* species complement the study. One *Acanthoceras* and four *Urosolenia* species were identified: *A. zachariasii* (Brun) Simonsen, *U. amazonica* Sala, Núñez-Avellaneda & Vouilloud, *U. eriensis* var. *morsa* (West & G.S.West) Bukhtiyarova, *U. longiseta* Zacharias and *U. obesa* Freire, Tremarin & Ludwig. Morphological variation of frustules was described and illustrated by optical and scanning electron microscopy, and compared with similar species such as *U. delicatissima* Sala, Núñez-Avellaneda & Vouilloud and *U. eriensis* var. *eriensis* (H.L.Smith) Round & Crawford. The pioneer record of *U. amazonica* to Brazil and unprecedented details of the ultrastructure of *A. zachariasii* and *U. longiseta* are included in this study. Cellular densities differed among evaluated reservoirs showing strong correlations with inorganic nitrogen concentrations, N/P ratio and temperature. The results suggested higher densities in periods of warmer temperatures and low availability of the nitrogen compounds and confirmed that species respond strongly to local environmental gradients.

Keywords: centric diatom, lentic environments, State of Paraná, taxonomy.

TREMARIN, P.I., FREIRE, E.G., ALGARTE, V.M., LUDWIG, T. *Espécies de Acanthoceras e Urosolenia (Diatomeae) em reservatórios subtropicais do sul do Brasil: ultraestrutura, distribuição e autoecologia.* Biota Neotropica. 15(1): e20140043. <http://dx.doi.org/10.1590/1676-06032014004314>

Resumo: Espécies de *Acanthoceras* Honigmann e *Urosolenia* Round & Crawford *emend.* Rott, Kling & McGregor foram estudadas com base em amostras provenientes de 19 reservatórios de usinas hidrelétricas do estado do Paraná, sul do Brasil. Informações sobre a autoecologia das espécies de *Urosolenia* complementam o estudo. Uma espécie de *Acanthoceras* e quatro de *Urosolenia* foram identificadas: *A. zachariasii* (Brun) Simonsen, *U. amazonica* Sala, Núñez-Avellaneda & Vouilloud, *U. eriensis* var. *morsa* (West & G.S.West) Bukhtiyarova, *U. longiseta* Zacharias e *U. obesa* Freire, Tremarin & Ludwig. A variação morfológica das frústulas foi descrita e ilustrada através de microscopia óptica e eletrônica de varredura e comparada com a de espécies similares, como *U. delicatissima* Sala, Núñez-Avellaneda & Vouilloud e *U. eriensis* var. *eriensis* (H.L.Smith) Round & Crawford. O registro pioneiro de *U. amazonica* para o Brasil e detalhes inéditos da ultraestrutura de *A. zachariasii* e *U. longiseta* estão contemplados neste estudo. As densidades celulares diferiram entre os reservatórios avaliados e mostraram forte correlação com concentrações de nitrogênio inorgânico, relação N/P e temperatura. Os resultados sugeriram densidades mais elevadas em períodos de temperaturas mais quentes e baixa disponibilidade de compostos nitrogenados e confirmaram que as espécies respondem fortemente aos gradientes ambientais locais.

Palavras-chave: ambientes lênticos, diatomácea cêntrica, estado do Paraná, taxonomia.

Introduction

Acanthoceras Honigmann and *Urosolenia* Round & Crawford *emend.* Rott, Kling & McGregor are centric diatoms worldwide distributed, occurring primarily in plankton of lentic environments (Rott et al. 2006). These genera are mainly characterized by having open girdle bands, cylindrical or sub-cylindrical frustules, conical to semi-conical valves ornamented

or not, calyptra and the presence or not of the seta (Round et al. 1990, Rott et al. 2006). The valves of *Acanthoceras* presents two calyptra while *Urosolenia* have only one (Round et al. 1990).

Detailed research on *Acanthoceras* and *Urosolenia* taxa is difficult to realize due to weakly silicified frustules, which are often destroyed by the usual techniques of cleaning and preservation. This fact may be the reason of so scarce records of these genera. Scanning and transmission electron microscopies

have been useful and often essential to distinguish among species, since they enable the visualization of structures indistinguishable in optical microscopy (Morales 2005). Accordingly, identifications of some species performed only with light microscopy should be reviewed (Rott et al. 2006).

Recent studies on *Acanthoceras* and *Urosolenia* were developed by Rott et al. (2006), Sala et al. (2008), Li et al. (2009), Karthick & Kociołek (2011) and Tremarin et al. (2013), with descriptions of eight new species and some new combinations.

Brazilian surveys have found *Acanthoceras zachariasii* (Brun) Simonsen and five taxa of *Urosolenia*: *U. brauni* (Hustedt) Rott & Kling, *U. longiseta* (Zacharias) Edlund & Stoermer, *U. eriensis* (H.L.Smith) Round & Crawford var. *eriensis*, *U. eriensis* var. *morsa* (West & G.S West) Bukhtiyarova and *U. obesa* Freire, Tremarin & Ludwig (Torgan et al. 1999, Rott et al. 2006, Melo et al. 2004, Raupp et al. 2009, Tremarin et al. 2009, Silva et al. 2011, Eskinazi-Leça et al. 2012, Tremarin et al. 2013). Informations about the ultrastructure of *Urosolenia* species found in Brazil are not routinely added to the studies, except for Torgan & Becker (1998) who described the morphology of *U. eriensis* var. *morsa*, and Tremarin et al. (2013) when proposed *U. obesa*.

According to Reynolds et al. (2002), *Urosolenia* are included within functional A-group (centric diatoms) characterized by preferring lakes with clear and often well-mixed water, tolerating nutrients deficiency. Representatives of the genus were detected in shallow Amazonian high-waters stages. In Brazilian subtropical reservoirs, *Urosolenia* species occurred in winter mixed waters (Silva et al. 2005). Ramberg (1987) found *A. zachariasii* and *U. eriensis* during stratification of water column, both disappearing in the mixing period. Edlund

& Stoermer (1993) remark that *Acanthoceras* is largely distributed and may be found in alcalin, shallow and eutrophic lakes and rivers from North America. *Urosolenia* may occur in highly diverse habitats and in oligotrophic to eutrophic conditions.

Thus, this study aimed to describe the morphology and expand the geographic distribution of *Acanthoceras* and *Urosolenia* species that occurred in plankton from hydropower plants reservoirs in the State of Paraná, Southern Brazil. Also, we identified the environmental factors closer correlated with *Urosolenia* species densities.

Material and methods

For the taxonomic analysis, samplings were carried out quarterly at 19 hydroelectric power plants reservoirs from the State of Paraná, Southern Brazil (Figure 1, Table 1), over four consecutive years (2007–2010), at subsurface (≈ 30 cm depth) and at the limit of the photic zone. A total of 768 phytoplanktonic samples were collected with a van Dorn sampler and were preserved with Lugol's iodine acetic solution (1%) (Bicudo & Menezes 2006). The material was washed with distilled water to prepare permanent slides mounted with Naphrax[®] (R.I. = 1.74). The specimens found were measured and photographed under Olympus BX40 light microscopy (LM) equipped with Olympus DP71 image capture, using phase contrast (1000x). Some of the material was dried on aluminum stubs and covered with gold and studied using a JEOL JSM 6360LV scanning electron microscopy (SEM), operated at 15 kV and 8 mm working distance, at the Electron Microscopy Center of the Universidade Federal do Paraná. Analyzed

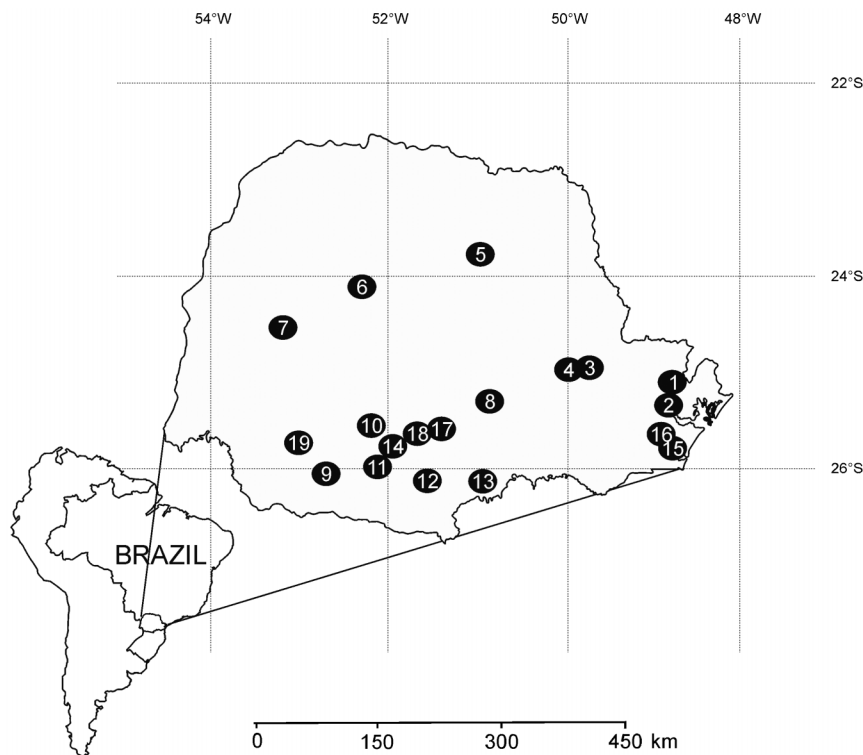


Figure 1. Sampling locations in the State of Paraná, Brazil. Hydroelectric power plants reservoirs: 01– Capivari, 02– Marumbi, 03– São Jorge, 04– Pitangui, 05– Apucarantina, 06– Mourão, 07– Melissa, 08– Rio dos Patos, 09– Chopim, 10– Cavernoso, 11– Segredo, 12– Foz do Areia, 13– Salto do Vau, 14– Jordão, 15– Chaminé, 16– Guaricana, 17– Fundão, 18– Santa Clara, 19– Salto Caxias.

Table 1. Data of the sampling sites in the State of Paraná and register number in the herbarium of Universidade Federal do Paraná (UPCB).

Reservoir	Station	UPCB/Date	Municipality	Geographic coordinates
Apucarantina	E2	69524–2007; 60508–2008; 68842–2009; 68866–2010	Tamarana	23°44'56"S/50°56'33"W
Capivari	E2	59525–2007; 60509–2008; 68843–2009; 68867–2010	Antonina	24°59'10"S/48°47'20"W
Cavernoso	E2	59526–2007; 60510–2008; 68844–2009; 68868–2010	Virmond	25°23'49"S/52°11'24"W
Chaminé	E2	59527–2007; 60511–2008; 68845–2009; 68869–2010	São José dos Pinhais	25°41'36"S/49°01'14"W
	E4	59528–2007; 60512–2008; 68846–2009; 68870–2010		
Chopim	E2	59529–2007; 60513–2008; 68847–2009; 68871–2010	Itapejara d'Oeste	25°53'26"S/52°43'05"W
Foz do Areia	E2	59530–2007; 60514–2008; 68848–2009; 68872–2010	Pinhão	26°03'39"S/51°30'09"W
	E3	59531–2007; 60515–2008; 68849–2009; 68873–2010		
	E5	59532–2007; 60516–2008; 68850–2009; 68874–2010		
Fundão	E3	65977–2008; 68864–2009; 68888–2010	Candói	25°32'04"S/51°48'55"W
Guaricana	E2	59533–2007; 60517–2008; 68851–2009; 68875–2010	Guaratuba	25°42'31"S/48°58'18"W
Jordão	E2	59534–2007; 60518–2008; 68852–2009; 68876–2010	Reserva do Iguaçu	25°45'14"S/52°04'54"W
Marumbi	E2	68865–2009; 68889–2010	Morretes	25°25'35"S/48°55'44"W
Melissa	E2	59535–2007; 60519–2008; 68853–2009; 68877–2010	Corbélia	24°32'12"S/53°12'28"W
Mourão	E2	59536–2007; 60520–2008; 68854–2009; 68878–2010	Campo Mourão	24°06'20"S/52°19'42"W
Pitangui	E2	59537–2007; 60521–2008; 68855–2009; 68879–2010	Ponta Grossa	25°01'41"S/50°06'06"W
Rio dos Patos	E2	59538–2007; 60522–2008; 68856–2009; 68880–2010	Prudentópolis	25°10'37"S/50°56'29"W
Salto Caxias	E3	59539–2007; 60523–2008; 68857–2009; 68881–2010	Capitão Leônidas Marques	25°32'43"S/ 53°06'05"W
	E5	59540–2007; 60524–2008; 68858–2009; 68882–2010		
Salto do Vau	E2	59541–2007; 60525–2008; 68859–2009; 68883–2010	União da Vitória	25°58'50"S/51°43'14"W
Santa Clara	E3	65976–2008; 68863–2009; 68887–2010	Candói	25°39'14"S/51°54'26"W
São Jorge	E2	59542–2007; 60526–2008; 68860–2009; 68884–2010	Ponta Grossa	24°59'45"S/49°59'39"W
Segredo	E2	59543–2007; 60527–2008; 68861–2009; 68885–2010	Mangueirinha	26°00'47"S/51°52'43"W
	E3	59544–2007; 60528–2008; 68862–2009; 68886–2010		

Source: Ribeiro et al. (2006).

samples (2007–2010) were stored in the Herbarium of the Universidade Federal do Paraná (UPCB). The terminology used in the description of species was based on Round et al. (1990) and Rott et al. (2006).

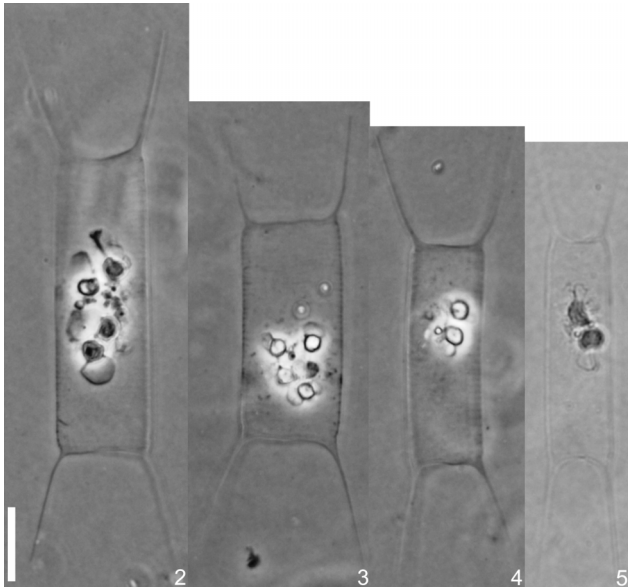
For the quantitative and ecological analysis, samplings were carried out quarterly over six consecutive years (2007–2012). *Urosolenia* quantification was performed in 'Ütermohl' chambers (1958) under Olympus IX70 inverted microscope at a magnification of 600 x, enumerated in random fields (Uhelinger 1964) and followed the stabilization curve of the number of species. Sedimentation time of the samples was carried out

according to Lund et al. (1958). The physical and chemical analyses (Table 2) were performed by the technical staff of the Instituto de Tecnologia para o Desenvolvimento (LACTEC) following the Standard Methods (APHA 1989).

Environmental data were summarized by a principal component analysis (PCA, Legendre & Legendre 1998) with log transformed and standardized variables. The selection of the axes for the interpretation of the results followed the Broken Stick criteria (Jackson 1993). Spearman rank correlation coefficients were used to measure the degree of association between the densities of *Urosolenia amazonica*, *U. longiseta* and

Table 2. Physical and chemical characteristics of the sampling stations (mean values among sampling periods).

	Apucaranhã (n=4)	Capivari (n=3)	Chaminé (n=20)	Fundão (n=4)	Guaricana (n=20)	Jordão (n=10)	Mourão (n=9)	Pitangui (n=18)	Rio dos Patos (n=6)	Salto Caxias (n=2)	Santa Clara (n=6)	Segredo (n=14)	São Jorge (n=14)
Dam depth	9.75	13	13.5	38.5	8.06	58.6	12.11	2.86	3.5	56.5	43.83	46.25	7.6
Secchi (m)	1.66	2.36	1.84	1.37	1.41	1.52	1.37	0.74	0.41	2.1	1.47	1.44	0.84
Water temperature (°C)	20.1	19.13	20.99	23.68	20.58	22.06	22.66	19.25	17.75	20.25	24.06	20.65	20.88
Dissolved oxygen (mg.L ⁻¹)	7.6	5.16	6.9	7.9	8.19	6.68	6.49	7.47	7.21	7.8	7.67	6.58	7.24
pH	7.32	7.4	7.66	7.25	7.52	6.89	7.37	7.52	7.13	7.35	7.25	7.17	7.89
Conductivity (µS.cm ⁻¹)	31.75	70.33	43.12	28.75	25.75	26.7	26.88	48.05	51.5	44.5	31.16	49.14	51.5
Total phosphorus (mg.L ⁻¹)	0.015	0.013	0.017	0.02	0.024	0.015	0.015	0.043	0.061	0.015	0.018	0.024	0.034
N-NO ₃ (mg.L ⁻¹)	0.097	0.263	0.091	0.37	0.088	0.414	0.186	0.157	0.575	0.67	0.355	0.745	0.097
Total inorganic nitrogen (mg.L ⁻¹)	0.2	0.393	0.21	0.482	0.189	0.525	0.295	0.31	0.763	0.78	0.468	0.858	0.192
Total Nitrogen (mg.L ⁻¹)	0.762	1.45	0.875	0.662	0.82	0.99	0.916	0.816	1.52	2.3	0.825	1.182	0.73
Turbidity (NTU)	6.25	3	3.25	6.75	4.4	5.9	9.44	9.61	26.16	6.5	5.5	7.57	10.65
N/P Ratio	129.6	231.7	146.9	94.7	98.07	171.8	185.3	46.19	56.8	463.5	128.7	120.5	58
Water retention time	14	107	121	4	12	10	53	2	2	31	48	45	43
Classification	lentic-lotic	lentic	lentic	lotic	lentic-lotic	lentic-lotic	lentic	lotic	lotic	lentic-lotic	lentic	lentic	lentic



Figures 2–5. *Acanthoceras zachariasii*. LM. Scale: 10 μm .

U. obesa and abiotic variables. The relationship between the environmental variables and the density of three species of *Urosolenia* was evaluated by means of stepwise multiple regression analysis. The method consists of starting with a single predictor variable and then adding variables one at a time until the addition of further variables does not produce an appreciable increase in the coefficient of determination (Sokal & Rohlf 1981). Except for pH, other variables were log-transformed. Data distribution and multicollinearity among the abiotic factors were checked before performing the analysis (Zar 2010). The principal component analysis (PCA), Spearman correlations and multiple regressions were carried out respectively using PC-ORD (McCune & Mefford 1999) and STATISTICA (StatSoft 2005).

The autoecology of *Urosolenia* species was performed with the taxa that present densities $>3 \text{ cells.mL}^{-1}$ in the quantitative analysis (*U. amazonica*, *U. longiseta* and *U. obesa*) and only with reservoirs that have had regular sampling of physical and chemical data.

Results and discussion

Five taxa were identified in the qualitative analysis: *A. zachariasii*, *U. amazonica*, *U. eriensis* var. *morsa*, *U. longiseta* and *U. obesa*. The taxa occurred in 15 of the 19 reservoirs (except for Cavernoso, Chopim, Marumbi and Melissa reservoirs). Specimens of *Acanthoceras* and *Urosolenia* were registered in 12% of analyzed samples, being *Urosolenia amazonica* present in 87% of these samples, followed by *U. obesa* (80%), *U. longiseta* (60%), *U. eriensis* var. *morsa* (16%) and *A. zachariasii* (10%).

Acanthoceras zachariasii (Brun) Simonsen, Bacillaria 2: 55, 1979.

Basionym: *Attheya zachariasii* Brun, Forschungsberichte aus der Biologischen Station zu Plön 2: 53, pl. 1, fig. 11, 1894.

Synonyms: *Acanthoceras magdeburgense* Honigmann, Archiv für Hydrobiologie und Planktonkunde 5: 77, pl. 2, fig. a, 1910.

Acanthoceras magdeburgense var. *lata* Honigmann, Archiv für Hydrobiologie und Planktonkunde 5: 78, pl. 2, fig. b, 1910.

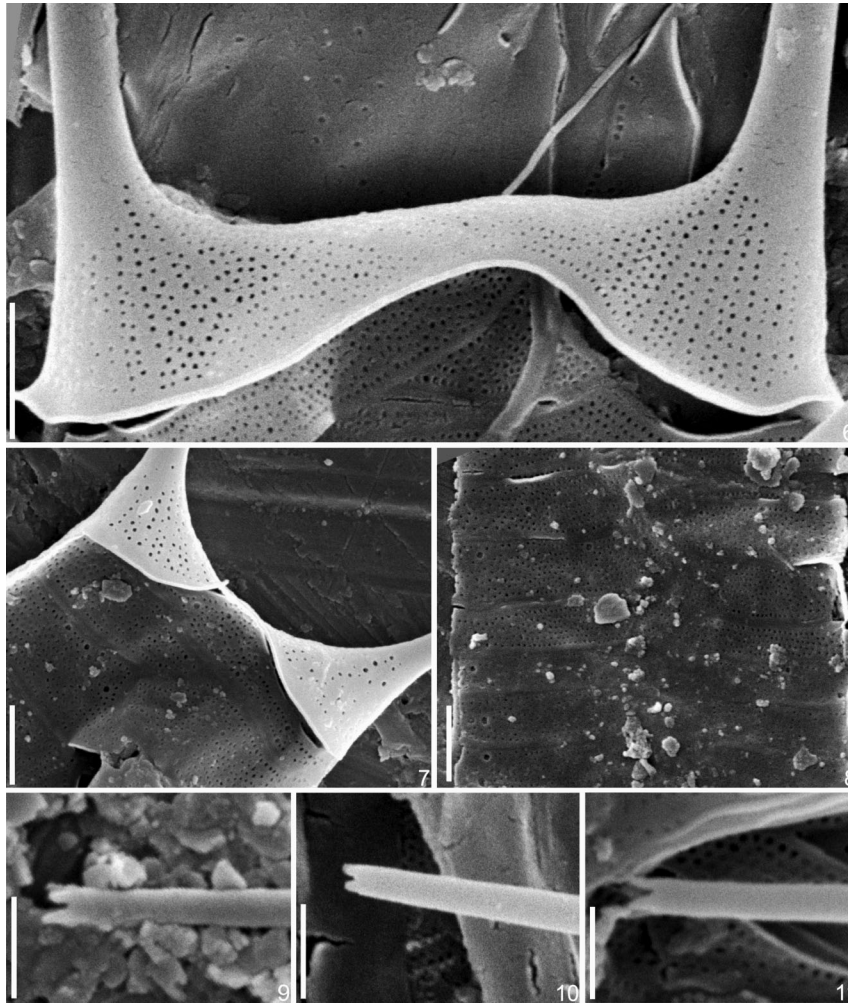
Rhizosolenia eriensis var. *zachariasii* (Brun) Playfair, Proceedings of the Linnean Society of New South Wales 37(3): p. 538; pl. 56, fig. 33–35, 1913.

Frustules solitary, subcylindrical, straight, 56.5–73.4 μm total long, 6.1–13.5 μm width (Figures 2–5). Valve face straight with conical apices, ornamented with round to irregular areolae, 50–55 in 10 μm , arranged in rows and extending onto the calyptra base (Figures 6, 7). Valve mantle edge surrounded by a thin hyaline margin (Figure 7). Calyptra straight, positioned in the valve apices, 14.9–17.8 μm long, positioned at right to strongly oblique angle with the peralvar axis. Tip of spine-like extension with four small teeth (Figures 9–11). Terminal seta not observed. Cingulum with several semi-circular open and narrow bands, 9–14 in 10 μm , perforated by round poroids, ca. 7 in 1 μm (Figure 8). Bands of the median region of frustule perforated by a few poroids, scarcely distributed. Coarser rounded pores, varying in size and number, present on the girdle bands (Figure 8). Two to four discoid to plate-like chloroplasts per cell (Figures 2–5).

The genus *Acanthoceras* was proposed by Honigmann (1910) when describing *A. magdeburgense* Honigmann, a later synonym of *Attheya zachariasii* Brun. The name *Acanthoceras* had already been proposed by Kützing (1842) for a red alga genus currently considered a later homonym of *Ceramium* Roth (Edlund & Wynne 1996). Since the name *Acanthoceras* Kützing was not in use and that *Acanthoceras* Honigmann was reported for a diatom, Edlund & Wynne (1996) suggested the conservation of the name *Acanthoceras* that was recommended by the Committee for Algae (see Compère 1999).

Although the ultrastructure of *Acanthoceras zachariasii* has been illustrated and described by Round et al. (1990) and the morphology of its resting spores analyzed by Edlund & Stoermer (1993), some taxonomically important details on the frustule morphology of this species remained unknown. The number of calyptra teeth and density of poroids in the girdle bands are recorded for the first time in this study.

The specimens of *Acanthoceras zachariasii* from Brazilian reservoirs showed smaller individuals than the type material of the species, but they were similar to other studied specimens, with intermediate sizes, as can be seen on Table 3. The Brazilian material has smaller calyptra length and higher number of girdle bands when compared with materials analyzed by Huber-Pestalozzi (1942), Rivera (1974), Shirata & Valente-Moreira (1987) and Ferrario et al. (1992) (Table 3). There are few records of the metric variation of *A. zachariasii*. Rivera (1974) remarked that the number of bands is not a constant feature in *A. zachariasii*, so we believe that the specimens analyzed in our study represent an extreme of the population and would not justify the proposition of a new taxon. Anyway, it is necessary to analyze the type material of *A. zachariasii*, especially in SEM, to study the fine ornamentation of the frustules (ex. calyptra teeth, details of the valve, calyptra and bands), for comparison among different populations. However, we advise on this difficult task, given the frequent and fast disappearing of *Acanthoceras* individuals in the stored samples. The low silicified frustules of *Acanthoceras*, as well as *Urosolenia*, do not resist long time in chemical preserved samples (Tremarin et al. 2013).



Figures 6–11. *Acanthoceras zachariasii*. SEM. Figs 6–7. Valve surface. Scales: 2 μm . Fig. 8. Girdle bands in the median region of frustule. Scale: 2 μm . Figs 9–11. Teeth of the calyptra. Scales: 1 μm .

Table 3. Morphometric features of *Acanthoceras zachariasii* var. *zachariasii* and *A. zachariasii* var. *curvata*.

Reference	<i>A. zachariasii</i> var. <i>zachariasii</i>						<i>A. zachariasii</i> var. <i>curvata</i>
	this study	Brun (1874)	Huber- Pestalozzi (1942)	Rivera (1974)	Shirata & Valente- Moreira (1987)	Ferrario et al. (1992)	Rivera (1974)
Total frustule length (μm)	56.5–73.4	...	12–100
Frustule length (μm)	29.1–39.7	60–100	...	42–86	31–45.6	20–36	43–90
Frustule width (μm)	6.1–13.5	15–20	15–25	8.5–17	9.7–18.1	11–12	8–11
Calyptra length (μm)	14.9–17.8	...	40–70	24–32	18.6–30.1	20–25	20–30
Girdle bands (in 10 μm)	9–14	...	3.4–4	4–6	...	4–4.5	4.5–5
Porous of the bands (in 1 μm)	7
Teeth of the calyptra	4
Country	Brazil	Germany	Switzerland and Germany	Chile	Brazil	Argentina	Chile

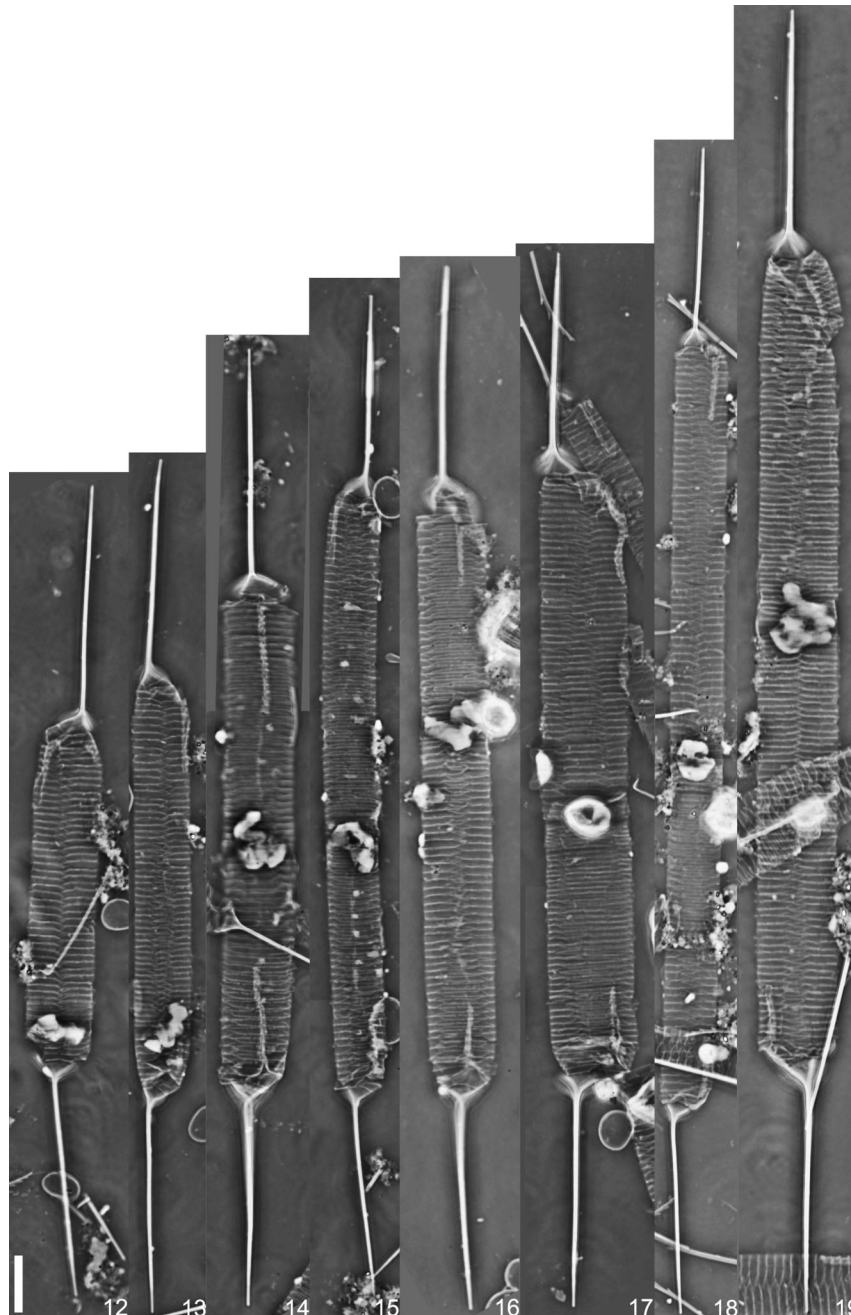
The species has only one variety, *Acanthoceras zachariasii* var. *curvata* Rivera, proposed by Rivera (1974) based on the frustule curvature in relation to the pervalvar axis.

Acanthoceras zachariasii is a freshwater taxon, worldwide distributed, recorded to Germany, Australia, Switzerland, Sweden, Finland, Russia, United States, Chile, Argentina and Brazil (Brun 1874, Hustedt 1930, Cleve-Euler 1951, Rivera 1974, Shirata & Valente-Moreira 1987, Ferrario et al. 1992, Edlund & Stoermer 1993, Medvedeva et al. 2009).

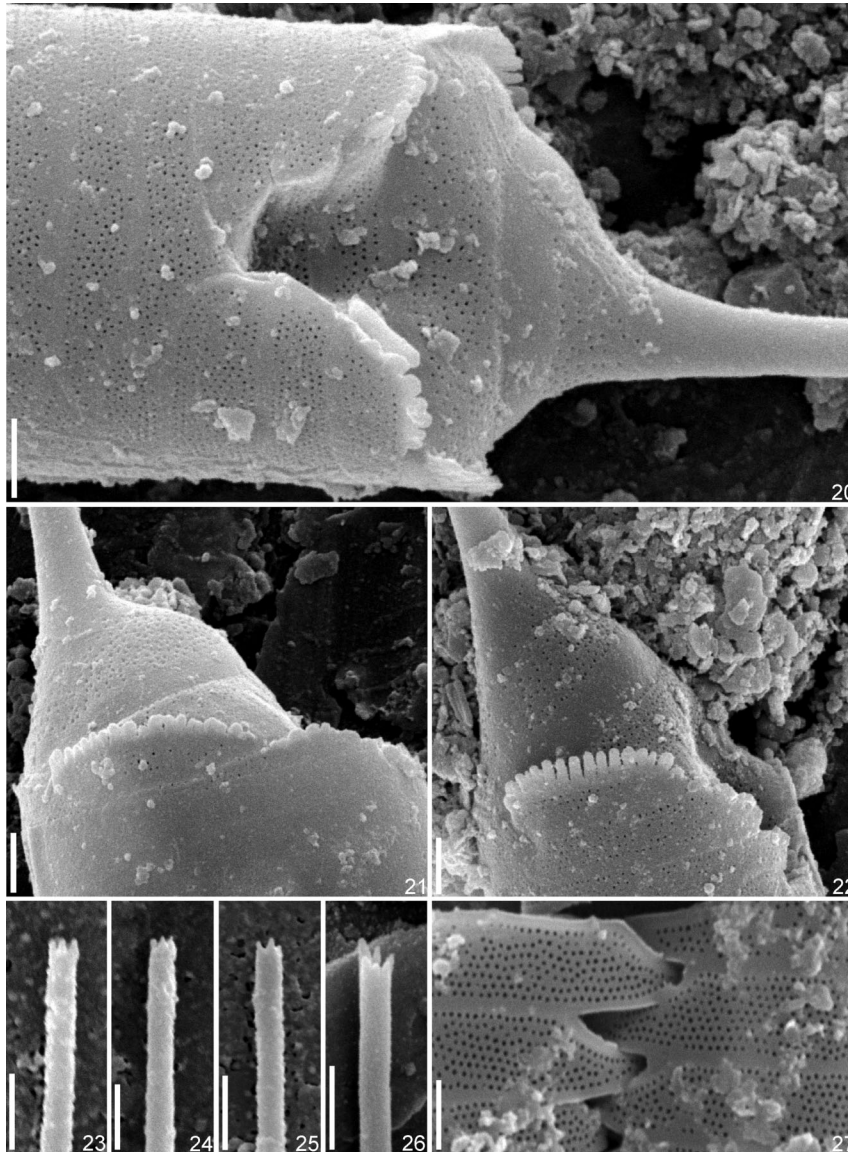
Occurrence in samples (UPCB) – São Jorge reservoir 68884; Pitangui reservoir 68879.

Urosolenia amazonica Sala, Núñez-Avellaneda & Vouilloud, Diatom Research 23(1): 164, pl. 1, figs 1–9, 2008.

Frustules solitary or in pairs, cylindrical, straight, 78–194 μm total long, 7.2–12.8 μm width (Figures 12–19). Valve face conical, 2.4–5.4 length, ornamented with rounded areolae 7–9 in 1 μm , randomly arranged and extending onto the calyptra base (Figures 20–22). Valve mantle edge surrounded by a thin hyaline margin (Figures 21, 22). Calyptra straight and eccentric, 24.8–38.2 μm long, positioned at right to slightly oblique angle with the pervalvar axis. Tip of spine-like extension with 4–6 small teeth (Figures 23–26). Terminal seta not observed. Cingulum with several semi-circular open and narrow bands, 8–11 in 10 μm , perforated by round poroids, ca. 7–10 in 1 μm (Figure 27). Valvocopula wider than the other bands, with poroids irregularly distributed and serrated margin (Figures 20, 22).



Figures 12–19. *Urosolenia amazonica*, LM. Scale: 10 μm .



Figures 20–27. *Urosolenia amazonica*, SEM, external view. Fig. 20. Aspect of valve and the insertion site of the calyptra of adjacent cell. Scale: 1 μ m. Figs 21, 22. Overview of valve. Note the serrated valvocopulae. Scales: 1 μ m. Figs 23–26. Detail of calyptra teeth. Scales: 1 μ m. Fig. 27. Detail of girdle bands showing the poroids and imbrication line in the median region of frustule. Scale: 1 μ m.

Urosolenia amazonica is similar to *U. eriensis* var. *eriensis*, mainly by the dimensions and shape of frustules, but differs by higher number of girdle bands and valvocopula with serrate margin (Table 4) (Huber-Pestalozzi 1942, Krammer & Lange-Bertalot 1991, Sala et al. 2008). The absence of more detailed features of *U. eriensis* var. *eriensis*, as number of calyptra teeth, calyptra length and density of poroids in the bands, difficult a more precise comparison between the two species.

Urosolenia eriensis var. *morsa* is very similar to *U. amazonica* in light microscopy. However, the former may have larger valves and valvocopulae with smooth edge (Huber-Pestalozzi 1942, Krammer & Lange-Bertalot 1991, Torgan & Becker 1998). Furthermore, *Urosolenia eriensis* var. *morsa* have three teeth in the calyptra as documented by Torgan & Becker (1998) (Table 4). We believe that some Brazilian exemplars recorded as *U. eriensis* var. *morsa* in previous studies may be *U. amazonica*, due to the similarities between the species in light microscopy.

We found some exemplars of *U. amazonica* with longer total length of frustule and smaller valve length than that reported by Sala et al. (2008) (Table 4), but the valvocopulae serrate and calyptra teeth were always present in the observed specimens.

Urosolenia amazonica was proposed based on material from the Colombian and Peruvian Amazon (Sala et al. 2008), with no subsequent records. Thus, this is the first citation of the species in Brazil.

Occurrence in samples (UPCB) – Apucarantina reservoir 59524, 60508, 68842; Guaricana reservoir 59533, 60517, 68875, 68875; São Jorge reservoir 59542, 60526, 68860, 68884; Pitangui reservoir 59537, 60521, 68855, 68879; Fundão reservoir 68864, 68888; Foz do Areia reservoir 60515, 60516, 60517, 68872, 68874; Santa Clara reservoir 68863, 68887; Jordão reservoir 59520, 68852, 68876; Segredo reservoir 59543, 59544, 60527, 60528, 68861, 68862, 68885, 68886; Salto Caxias reservoir 68857, 68858, 68881, 68882; Mourão reservoir 59536, 60520,

Table 4. Morphometric and morphological variation of *Urosolenia amazonica* and related taxa.

Reference	<i>U. amazonica</i>		<i>U. erienses</i> var. <i>erienses</i>		<i>U. erienses</i> var. <i>morsa</i>	
	this study	Sala et al. (2008)	Krammer & Lange-Bertalot (1991)	Huber-Pestalozzi (1942)	Huber-Pestalozzi (1942), Krammer & Lange-Bertalot (1991)	Torgan & Becker (1998)
Total frustule length (µm)	78–194	76–120	40–150	40–150	80–135*	...
Frustule width (µm)	7.2–12.8	6–18	6–15	6–15	5–20	6.0–12.0
Frustule length (µm)	32.8–118.8	40–68	40–84
Girdle bands (in 10 µm)	8–11	8–16	3–4	3–4	6–9	5–10(12)
Porous in the bands (in 1 µm)	7–10	7–14	7–9
Calyptra length (µm)	24.8–38.2	27–48	...	28–38	22–36	22–45
Valve length (µm)	2.4–5.4	3–9.5	...	2–15	5–20	6–12
Teeth in the calyptra	4–6	4–6	2+ligula*
Valvocopula	serrate	serrate	smooth*

* data measured or observed in the illustrations.

68854; Chaminé reservoir 59527, 59528, 60511, 60512, 68845, 68846, 68869, 68870; Rio dos Patos reservoir 68856, 68880.

Urosolenia erienses var. *morsa* (West & G. S. West) Bukhtiyarova, Algologia 5(4): 417, 1995.

Basionym: *Rhizosolenia erienses* var. *morsa* W. & G. S. West, Transactions of the Royal Society of Edinburgh 41(3): 509, pl. 6, fig. 23, 1905.

Synonyms: *Rhizosolenia morsa* (W. & G. S. West) W. & G.S. West, Transactions of the Royal Irish Academy 33: 109, pl. 11, fig. 5, 1906.

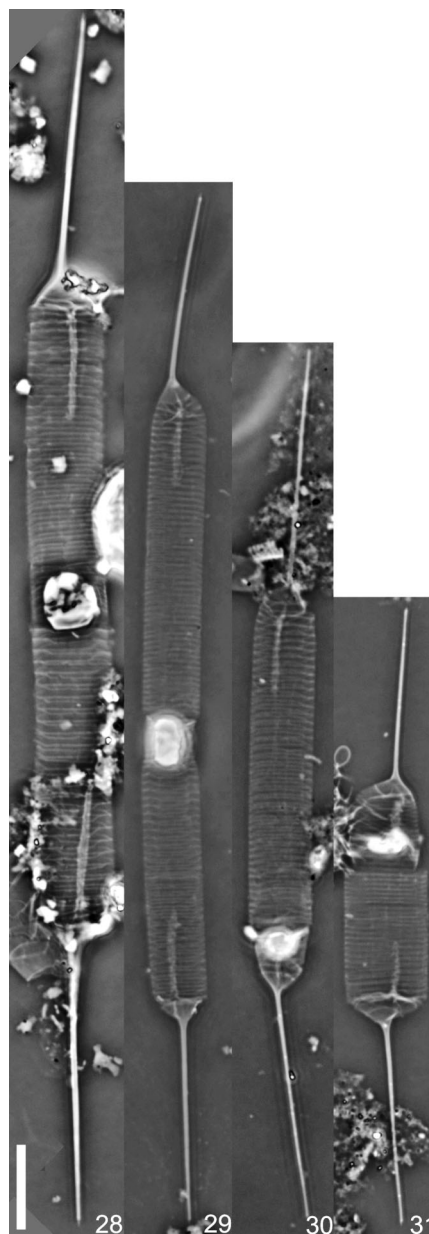
Urosolenia erienses var. *morsa* (W. West & G. S. West) Torgan in Torgan & Becker, Iheringia, Série Botânica 50: 90; figs 2–9, 1998.

Frustules solitary or in pairs, cylindrical, straight, 73.1–143.4 µm total long, 6.9–20.3 µm width (Figures 28–31). Valve face conical, 3.8–7.6 length, ornamented with rounded areolae 7–10 in 1 µm, randomly arranged and extending onto the calyptra base (Figures 32–34). Valve mantle edge surrounded by a thin hyaline margin (Figure 33, 34). Calyptra straight and eccentric, 22.4–35.5 µm long, positioned at right to slightly oblique angle with the pervalvar axis. Tip of calyptra with 2–3 small teeth and one ligula (Figures 36–38). Terminal seta not observed. Cingulum with several semi-circular open and narrow bands, 7–11(18) in 10 µm, perforated by round poroids, ca. 8–9 in 1 µm (Figure 35). Valvocopula wider than the other bands, with poroids irregularly distributed and smooth margin (Figures 32, 34).

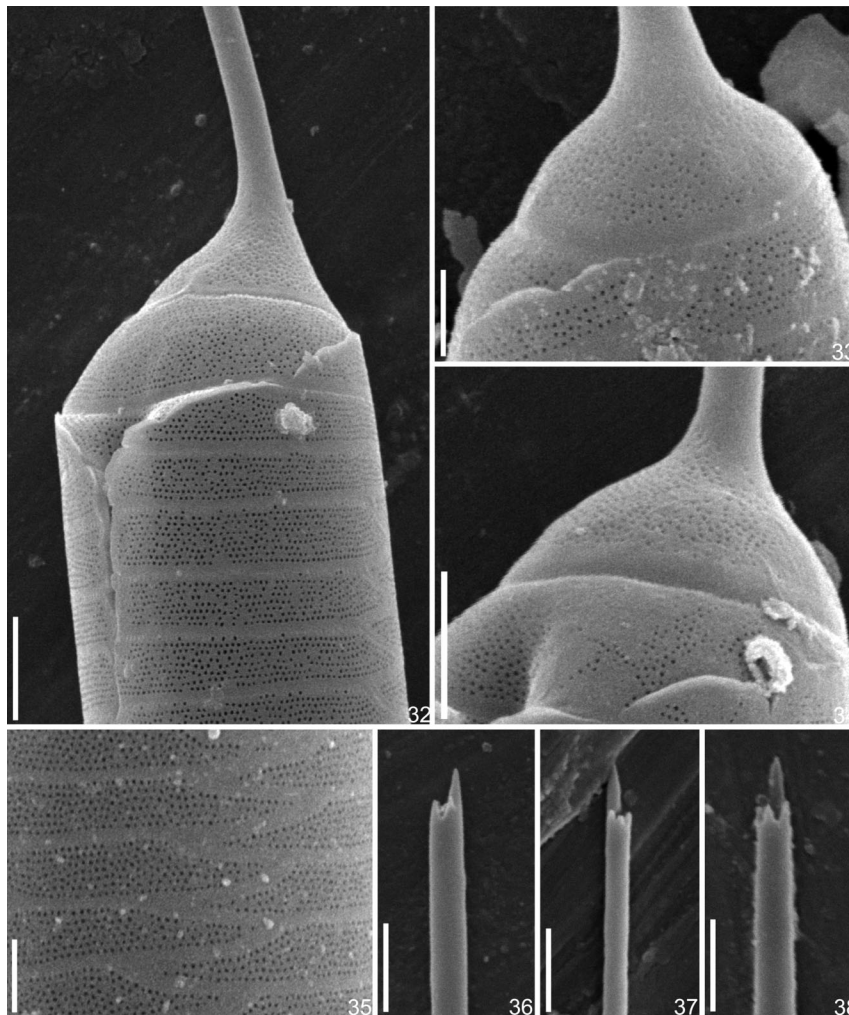
The ultrastructure of *U. erienses* var. *morsa* was documented by Torgan & Becker (1998), based on samples from Patos lagoon, Southern Brazil. The illustrations show the similarities with the material from the State of Paraná, except by the number of teeth in the calyptra apex. We found exemplars with 2 or 3 teeth and one ligula, while Torgan & Becker (1998) recorded only 2 teeth and the ligula.

Urosolenia erienses var. *morsa* differs from the typical variety of species by higher number of girdle bands (Table 4) (Huber-Pestalozzi 1942, Krammer & Lange-Bertalot 1991, Torgan & Becker 1998). *Urosolenia erienses* var. *morsa* was found in countries such as Britain, New Zealand, Russia and Brazil (Medvedeva et al. 2009, Tremarin et al. 2009, Guiry & Guiry 2014).

Few specimens of *U. erienses* var. *morsa* were found in Brazilian reservoirs samples, and occur together with *U. amazonica*.



Figures 28–31. *Urosolenia erienses* var. *morsa*, LM. Scale: 10 µm.



Figures 32–38. *Urosolenia eriensis* var. *morsa*, SEM. Fig. 32. External view of frustule showing the insertion site of the calyptra of adjacent cell. Scale: 2 μm . Figs 33, 34. Aspect of valve in external view and valvocopulae. Scales: 1 μm and 2 μm , respectively. Fig. 35. Detail of girdle bands showing the poroids and imbrication line. Scale: 1 μm . Figs 36–38. Detail of calyptra teeth. Scales: 1 μm .

Occurrence in samples (UPCB) – Chaminé reservoir 68845, 68846; Guaricana reservoir 59533; São Jorge reservoir 60526.

Urosolenia longiseta (Zacharias) Edlund & Stoermer, *Journal of Paleolimnology* 9(1): 59, pl. 1, figs 5–6, 1993.

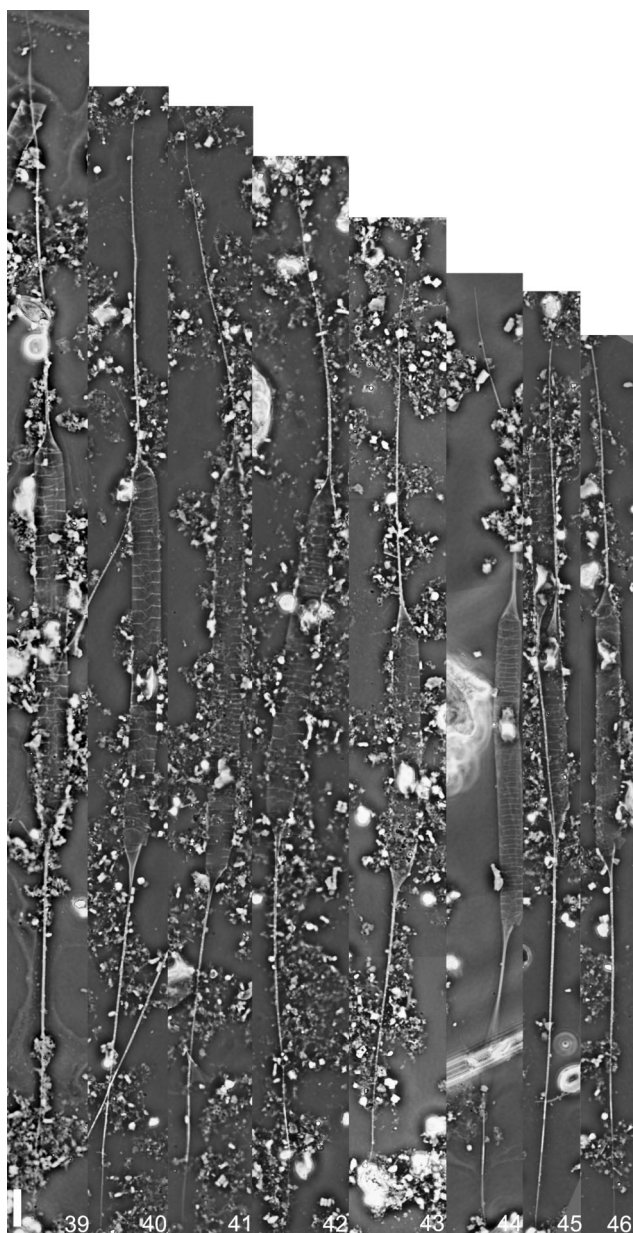
Basionym: *Rhizosolenia longiseta* Zacharias, *Forschungsberichte aus der Biologischen Station zu Plön* 1: 38; fig. 7, 1893.

Synonym: *Urosolenia longiseta* (Zacharias) Bukhtiyarova, *Algologia* 5(4): 417, 1995.

Frustules solitary, cylindrical, straight to slightly curved, 216–273 μm total long, 5.8–8.5 μm width (Figures 39–46). Valve face conical, 2.4–5.4 μm length, ornamented with rounded to elongate areolae, 6–8 in 1 μm , arranged in almost linear pattern and extending onto the calyptra base (Figures 47, 48). Valve mantle edge surrounded by a thin hyaline margin (Figure 47). Calyptra straight and central, 64–100 μm long, positioned at right to slightly oblique angle with the pervalvar axis. Tip of calyptra with 3–4 small teeth (Figures 51–55). Terminal seta long (Figure 56). Cingulum with several semi-circular open and large bands, 3–4 in 10 μm , perforated by elongate poroids, ca. 7–8 in 1 μm (Figures 49, 50).

When proposed *Rhizosolenia longiseta*, Zacharias (1893) provided only the length of frustule and calyptra (Table 5). Additional, but limited to light microscopy information on the morphology and metric limits was subsequently reported for this species (ex. Krammer & Lange-Bertalot 1991; Huber-Pestalozzi 1942). The failure to record the frustules details of *U. longiseta* type material has hampered the comparison of this species with populations from different regions of the world and similar taxa. Attempts to analyze a sample of *Rhizosolenia longiseta* studied by Zacharias from Schleswig-Holstein, Germany (material number E4347–Hustedt Diatom Collection) failed, because complete frustules were not found. Valves poorly preserved and the lack of integrity of the calyptra did not allow to observe the number and morphology of apical teeth.

Our specimens of *Urosolenia longiseta* had smaller frustules and shorter calyptra than those described by Zacharias (1893), Huber-Pestalozzi (1942) and Krammer & Lange-Bertalot (1991) (Table 5). The metric variation recorded was more related to that cited by Zacharias (1898) and Cleve-Euler (1951).



Figures 39–46. *Urosolenia longiseta*, LM. Scale: 10 μ m.

The ultrastructure of *Urosolenia longiseta* is still poorly known. Only the morphology of its resting spores was well studied by Edlund & Stoermer (1993). Thus, the number and morphology of the calyptra teeth and the areolation pattern of the valves and girdle bands of *U. longiseta* are recorded for the first time in this study.

The frustules of *U. delicatissima* Sala, Núñez-Avellaneda & Vouilloud and *U. extensa* Karthick & Kociolek are very similar to *U. longiseta*. However, *U. delicatissima* differs mainly by having a bottom, a large labiate-shaped perforation on the valve (Sala et al. 2008). Furthermore, this species may have longer frustules and higher number of bands (Table 5) (Sala et al. 2008, Li et al. 2009). *Urosolenia extensa* have elongate openings in the valve, greater number of girdle bands, longer valves, higher density of areolae (8–9 in 1 μ m) and shorter calyptra than that *U. longiseta* (Table 5) (Karthick & Kociolek 2011).

Urosolenia longiseta have a worldwide distribution, recorded in Britain, Ireland, North America, New Zealand, Russia, Germany and Brazil (Krammer & Lange-Bertalot 1991, Medvedeva et al. 2009, Tremarin et al. 2009, Guiry & Guiry 2014).

Occurrence in samples (UPCB) – Guaricana reservoir 59533, 60517, 68851, 68875; São Jorge reservoir 59534, 60526, 68852, 68884; Pitangui reservoir 68855, 68879; Fundão reservoir 68864; Foz do Areia reservoir 59530, 60514, 60515, 60516, 68872; Segredo reservoir 59543, 60527, 68861, 68862, 68885; Salto Caxias reservoir 68857; Chaminé reservoir 59527, 60511, 60512, 68845, 68846; Jordão reservoir 59520, 68852; Santa Clara reservoir 68863.

Urosolenia obesa Freire, Tremarin & Ludwig, Phytotaxa 125(1): 1–9, figs 2–27, 2013.

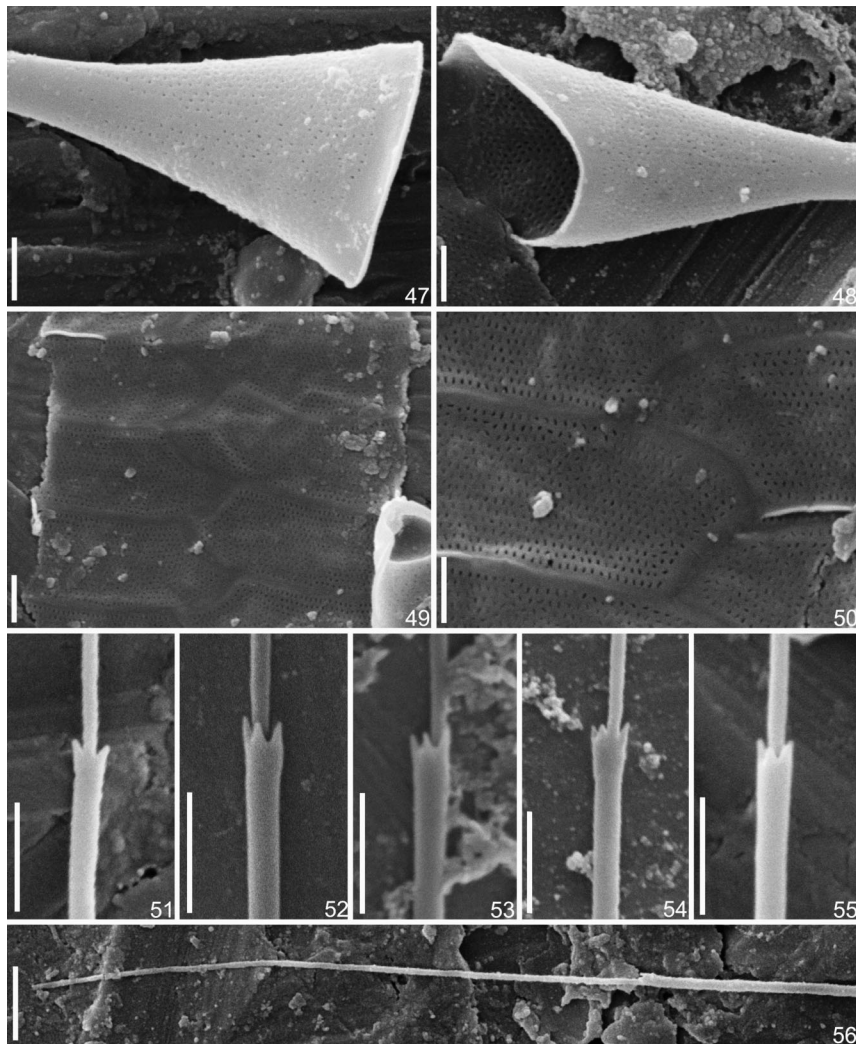
Frustules solitary, subcylindrical, straight to slightly curved, 27.6–55.2 μ m total long, 6.8–14.2 μ m width (Figures 57–61). Valve face conical ornamented with rounded to irregular areolae, 8–10 in 1 μ m, randomly arranged and extending onto the calyptra base (Figure 62). Valve mantle edge surrounded by a thin hyaline margin. Calyptra straight and eccentric, 9.7–15.9 μ m long, positioned at right to strongly oblique angle with the pervalvar axis. Calyptra in variable position to the frustules (Figures 57–61). Calyptra ornamented by irregular rib-like structures that extend from base until the median portion of this valve projection (Figure 62). Tip of calyptra with 2 small teeth and a central ligula (Figure 63). Terminal seta not observed. Cingulum with several semi-circular open and narrow bands, 13–16 in 10 μ m, perforated by round poroids, ca. 10–11 in 1 μ m. Coarser rounded pores, varying in size and number, present on both sides of the cingulum (Figure 62). Resting spore subcylindrical, with convex/concave wall, smooth, 5.4–6.5 μ m long and 10.1–13.5 μ m width (Figure 57).

Urosolenia obesa is a small and delicate taxa recently proposed to South Brazil. Details of frustule morphology and some ecological data of this species were reported by Tremarin et al. (2013) that proposed this taxon. At present, the species was only found in reservoirs of State of Paraná.

Occurrence in samples (UPCB) – Capivari reservoir 59525, 60509, 68843, 68867; Guaricana reservoir 59533, 60517, 68851, 68875; São Jorge reservoir 59523, 60526, 68860, 68884; Pitangui reservoir 59537, 60521, 68855, 68879; Salto do Vau reservoir 59541, 60525, 68859, 68883; Fundão reservoir 68864, 68888; Foz do Areia reservoir 59530, 59531, 59532, 60514, 60515, 60516, 68848, 68849, 68850, 68872, 68873, 68874; Santa Clara reservoir 68863, 68887; Jordão reservoir 59520, 60518, 68852, 68876; Segredo reservoir 59543, 59544, 60527, 60528, 68861, 68862, 68885, 68886; Salto Caxias reservoir 59539, 59540, 60523, 60524, 68857, 68858, 68881, 68882; Mourão reservoir 59536, 60520, 68854, 68878.

Ecology

The ecological preferences of *Acanthoceras* and *Urosolenia* species are poorly known. *Acanthoceras zachariasii* was reported as occasionally abundant and ephemeral in several alkaline and eutrophic environments in Europe, North and South America (Rivera 1974, Beaver 1981, Edlund & Stoermer 1993). In fact, this species was only found at low densities in two studied eutrophic reservoirs in April/2010, (São Jorge reservoir: 37 cells.mL⁻¹ and Pitangui reservoir: 99 cells.mL⁻¹), co-occurring with *Urosolenia* species. Ramberg (1987), when



Figures 47-56. *Urosolenia longisetata*, SEM. Figs 47, 48. External and internal view of valve, respectively. Scales: 1 μ m. Fig. 49. Girdle bands in the median region of frustule. Scale: 1 μ m. Fig. 50. Detail of bands showing the poroids and imbrication line. Scale: 1 μ m. Figs 51–55. Detail of calyptra teeth. Scales: 1 μ m. Fig. 56. Seta in the calyptra. Scale: 1 μ m.

study of phytoplankton of Lake Kariba, observed that *A. zachariasii* occurred in low density in the end of the rainy season and disappeared with the mixing of water column. According to Edlund & Stoermer (1993), the record of *Urosolenia* species for several environments with different physical and chemical conditions can be a result of the erroneous determination of taxa. Thus, we emphasize the importance of taxonomic studies to better define the differences between species and their geographical distribution, aiding subsequent ecological studies.

The first two axes from Principal Component Analysis (PCA) exceed expectations from the broken-stick distribution, suggesting these axes are significant and explained 52.52% of total variance from environmental variables considering 2007–2012. The first axis (27.66%) showed positive correlations with reservoir depth ($r=0.83$) and to molar N/P ($r=0.83$) and negative correlations with total phosphorous ($r=-0.56$) and pH ($r=-0.51$). Water column turbidity ($r=0.76$) and total inorganic nitrogen ($r=0.68$) had a significantly positive correlation and water transparency was negatively correlated ($r=-0.60$) with the second axis (24.86%).

In general, the Jordão reservoir was characterized by greater depth, and São Jorge, Pitangui, Guaricana and Chaminé were more alkaline environments. Rio dos Patos and Segredo reservoirs present higher turbidity and nutrient concentrations, but higher transparency characterizes Jordão and Chaminé reservoirs (Figure 64).

Urosolenia amazonica showed occurrence frequency of 78.7%, and despite the density values varied markedly, higher average values were recorded at São Jorge, Pitangui and Chaminé. Spearman rank correlation results revealed positive associations between density and pH, but total inorganic nitrogen, nitrate and reservoir depth were negatively correlated (Table 6). A multiple linear regression model was performed and revealed that total inorganic nitrogen was the main factor influencing *U. amazonica* cellular densities. Along with conductivity, water temperature and molar N/P ratio the model explained 12% of variance. According to this model, the conductivity was positively associated with *U. amazonica* density, and negatively correlated to total inorganic nitrogen, water temperature and the molar N/P ratio (Table 7).

Table 5. Metric and morphological variation of *Urosolenia longiseta* and related species.

Reference	<i>U. longiseta</i>					<i>U. delicatissima</i>				<i>U. extensa</i>
	this study	Zacharias (1893)	Zacharias (1898)	Huber-Pestalozzi (1942)	Krammer & Lange-Bertalot (1991)	Cleve-Euler (1951)	Sala et al. (2008)	Li et al. (2009)	Karthick & Kocotolek (2011)	
Total frustule length (µm)	216–273	70–200	40–200	134–280	>179	200–400	...	
Frustule width (µm)	5.8–8.5	4–10	4–10	5–14	3–10	3–10	3,2–5,1	
Frustule length (µm)	59–103	160	77–176	
Girdle bands (in 10 µm)	3–4	2–3	2.3–4.5	(3)4–7	5–7	5–7	
Porous in the bands (in 1 µm)	7–8	6–9	
Calyptra length (µm)	64–100	180–200	58–154	90–170	44–99	55–115	15.4–44.4	
Valve length (µm)	2.4–5.4	2.3–7.5	3–8	5–7	
Teeth in the calyptra	3–4	

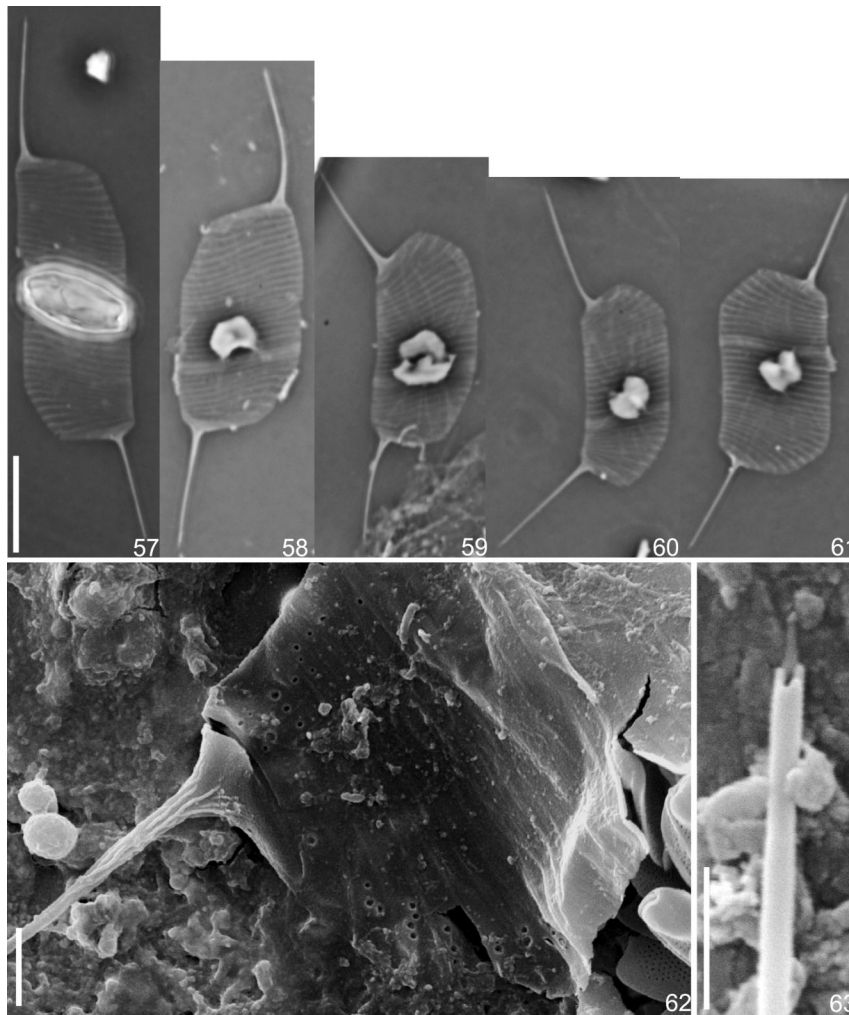
The frequency of *U. longiseta* occurrence was 34.5%. The density values had higher densities in winter season and in the São Jorge and Guaricana reservoirs. The maximum value registered was 486 ind.mL⁻¹ in São Jorge, during the winter of 2008. *Urosolenia longiseta* density was negatively correlated with depth, molar N/P ratio and water temperature (Table 6). The multiple linear regression model showed that the water temperature and the N/P molar influenced significantly the density of *U. longiseta* in the studied reservoirs. These variables along with depth of the water column, inorganic nitrogen, conductivity and turbidity explained 28% of *U. longiseta* density between environments and established temporal interval. The water body depth was the only variable positively correlated with the density of this species and all the others were negatively correlated (Table 7).

Frequency occurrence of *Urosolenia obesa* was 17.8% during 2007–2012 and the density values were generally lower compared to *U. amazonica* and *U. longiseta*. Higher cell concentrations were achieved at São Jorge and Fundão reservoirs, and greater frequency occurred during fall and winter. *Urosolenia obesa* was negatively associated with total nitrogen, N/P molar ratio and inorganic total nitrogen (Table 6). Multiple linear regression supported that limnological variables were related to *U. obesa* density. Accordingly, N/P molar ratio was the main variable related to species density variation, along with water temperature and turbidity, the model explained 36% of data (Table 7).

The three *Urosolenia* species showed distinct frequencies of occurrence and wide density variation among different studied reservoirs, in the period 2007–2012. Statistical analysis showed that such variation was correlated with limnological factors associated with particular characters from each reservoir, influencing the distribution pattern of species. Generally, higher densities of *Urosolenia* were registered in shallower reservoirs (ex., São Jorge, Pitanguí and Guaricana), except for Fundão (38 meters). Residence time (which favors nutrients mixing and resuspension) and hydrodynamics are important determinants of phytoplankton densities in shallow reservoirs (Silva et al. 2005; Reynolds 2006; Lopes et al. 2009; Nogueira et al. 2010).

Higher densities of *U. amazonica* were detected in more alkaline waters and in low inorganic nitrogen and nitrate concentrations, and shallow waters. *U. longiseta* were also recorded in shallower environments (São Jorge and Guaricana), in cooler temperatures. The species is less restricted by phosphorus (lowest N/P ratio). Finally, more elevated densities of *U. obesa* were related to lower concentrations of the nitrogenated forms. Higher densities of *U. amazonica* and *U. longiseta* were recorded by Silva et al. (2005), in two deep reservoirs from Iguacu River basin (Foz do Areia and Salto Santiago), during lower temperatures and nitrogen forms minor concentrations, besides greater turbulence of the water column. Reported as r-strategists (Reynolds 2006), these centric diatoms thrive in conditions of turbulent water column and low nutrient concentrations, corroborating the general pattern observed in this study.

The performed model selected inorganic nitrogen as the primary determinant of *U. amazonica* density, with a negative coefficient. *Urosolenia longiseta* showed a negative correlation with temperature and N/P molar ratio, both variables were cited as the main determinants with that species density. N/P molar ratio was selected as the most important variable negatively correlated with *U. obesa*. These results suggest the occurrence of higher densities in periods of warmer tempera-



Figures 57–61. *Urosolenia obesa*, LM. Scale: 10 µm. Figures 62–63. *Urosolenia obesa*, SEM. Fig. 62. External view of frustule showing the ornamentation of the valve and girdle bands. Scale: 2 µm. Fig. 63. Detail of calyptra teeth. Scale: 1 µm.

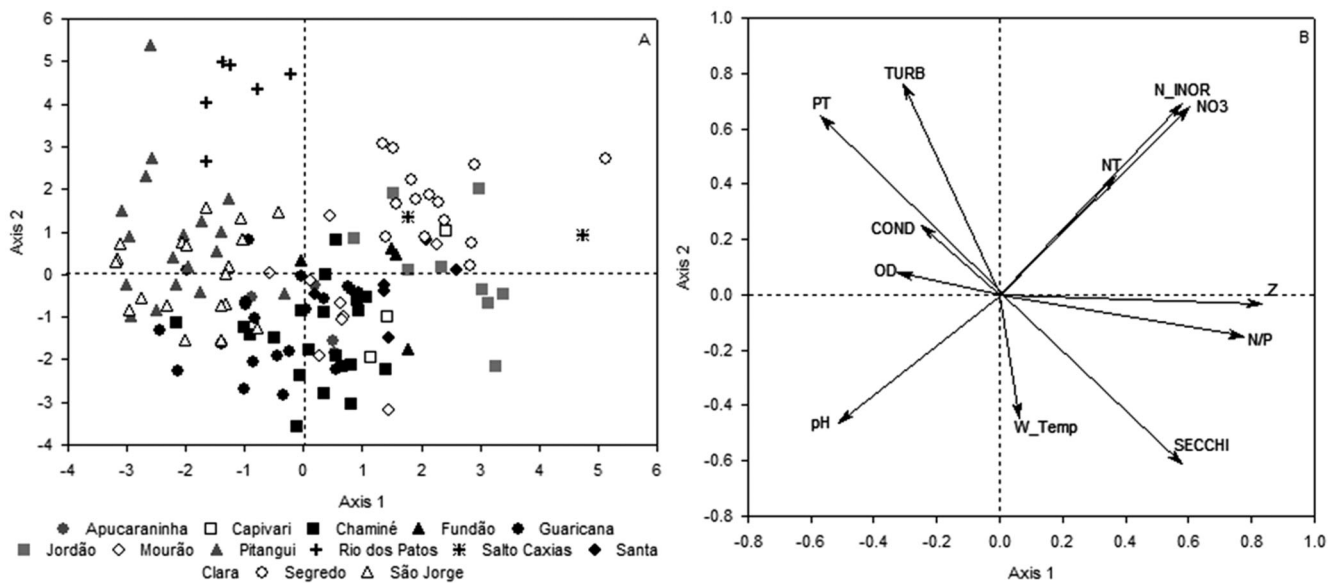


Figure 64. Reservoirs scores (A) derived from principal component analysis and Pearson correlation (B) between the original variables and ordination scores [COND (conductivity); N_INOR (total inorganic nitrogen), NO3 (nitrate), NT (total nitrogen), N/P ratio (N/P molar), DO (dissolved oxygen), PT (total phosphorus), Z (depth reservoir), Secchi (water column transparency); W_temp (water temperature); TURB (turbidity)].

Table 6. Values of Spearman's correlations between species density and environmental variables of the reservoirs. Values in bold = significant correlations.

	<i>U. amazonica</i>	<i>U. longiseta</i>	<i>U. obesa</i>
pH	0.224	0.179	0.144
Log Depth	-0.200	-0.341	-0.260
Log Conductivity	0.136	-0.123	-0.025
Log Water temperature	-0.081	-0.292	0.087
Log N/P ratio	-0.145	-0.300	-0.475
Log Inorganic nitrogen	-0.266	-0.148	-0.314
Log Nitrate	-0.234	-0.165	-0.268
Log Total nitrogen	-0.093	-0.225	-0.500
Log Turbidity	-0.094	0.019	0.223

Table 7. Results of a multiple regression analysis of species densities against environmental variables.

	Predictor variables	B	t	F	p
<i>U. amazonica</i>	Intercept	3.077	(96) 1.751	3.540	0.009
	Log Nitrogen inorganic	-2.516	-2.765		0.006
	Log Conductivity	0.892	1.636		0.105
	Log Water temperature	-1.411	-1.514		0.133
	Log N/P ratio	-0.263	-1.127		0.262
<i>U. longiseta</i>	Intercept	8.214	(40) 3.999	2.699	0.000
	Log Water temperature	-2.977	-2.591		0.013
	Log N/P ratio	-0.689	-2.403		0.020
	Log Conductivity	-0.653	-1.324		0.192
	Log turbidity	-0.334	-1.142		0.259
	Log Nitrogen inorganic	-1.326	-0.928		0.358
<i>U. obesa</i>	Log depth	0.04	0.140	7.242	0.888
	Intercept	-0.035	(38) -0.018		0.000
	Log N/P ratio	-0.039	-3.925		0.000
	Log Water temperature	2.485	1.889		0.066
	Log turbidity	0.366	1.030		0.309

tures and low levels of nitrogenated forms (inorganic nitrogen and N/P molar ratio), corroborating the results reported by Flynn (2001) for the phytoplanktonic diatoms community.

As shown, *Urosolenia* species respond more strongly to local environmental gradients, which are highly influenced by particular local characters (as depth and hydrodynamics of the system). Also, the extent of their ecological amplitude determines the distribution and occurrence pattern of these species in the reservoirs of State of Paraná.

Acknowledgments

To Coordenação de Aperfeiçoamento de Pessoal de Nível Superior (CAPES) for postdoctoral grant to P. Tremarin, to Fundação Araucária to postdoctoral grant for V. Algarte, and to Conselho Nacional de Desenvolvimento Científico e Tecnológico (CNPq) by the scientific productivity grant for T. Ludwig. To the Instituto de Tecnologia para o Desenvolvimento (LACTEC) and Companhia Paranaense de Energia (COPEL) for providing physical and chemical data and samples for the study; and to the staff of the Electron Microscopy Center of Universidade Federal do Paraná for technical assistance.

References

APHA - American Public Health Association/AWWA - American Water Works Association/WEF - Water Environment Federation.

1998. Standard methods for the examination of water and wastewater. 20th ed. Washington, DC.
- BEAVER, J. 1981. Apparent ecological characteristics of some common freshwater diatoms. Ontario Ministry of the Environment Rpt. 517 pp.
- BICUDO, C.E.M. & MENEZES, M. 2006. Gênero de Algas de águas Continentais do Brasil. Chave para identificação e descrição. Rima, São Paulo. 2^a edição.
- BRUN, J. 1894. Zwei neue Diatomeen von Ploen. Forschungsab. Biol. Stat. Plön 2:52–56.
- CLEVE-EULER, A. 1951. Die diatomeen von Schweden und Finnland. Kongl. Sven. Vet. Handl. 2(1):1–163.
- COMPÈRE, P. 1999. Report of the Committee for Algae: 5. Taxon 48(1):129–132, <http://dx.doi.org/10.2307/1224628>
- EDLUND, M.B. & STOERMER, E.F. 1993. Resting spores of the freshwater diatoms *Acanthoceras* and *Urosolenia*. J. Paleolimnol. 9(1):55–61, <http://dx.doi.org/10.1007/BF00680035>
- EDLUND, M.B. & WYNNE, M.J. 1996. Proposal to conserve the name *Acanthoceras* Honigm. (Bacillariophyceae) against *Acanthoceras* Kutz. (Rhodophyceae). Taxon 45:529–530.
- ESKINAZI-LEÇA, E., CUNHA, M.G.G.S., SANTIAGO, M.F., BORGES, G.C.P., LIMA, J.C., SILVA, M.H., LIMA, E.P. & MENEZES, M. 2012. Bacillariophyceae in Lista de Espécies da Flora do Brasil. Jardim Botânico do Rio de Janeiro. <http://floradobrasil.jbrj.gov.br/2010/FB120853> (Accessed in 11/03/2014).
- FERRARIO, M., DAMBORENEA, C. & SAR, E.A. 1992. Consideraciones sobre *Acanthoceras zachariasii* (Bacillariophyceae). Darwiniana 31(1-4):357–359.
- FLYNN, K.J. 2001. A mechanistic model for describing dynamic multi-nutrient, light, temperature interactions in phytoplankton. J. Plank. Res. 23(9):977–997, <http://dx.doi.org/10.1093/plankt/23.9.977>

- GUIRY, M.D. & GUIRY, G.M. 2014. AlgaeBase. World-wide electronic publication, National University of Ireland, Galway <http://www.algaebase.org> (Accessed in 01/10/14).
- HONIGMANN, H. 1910. Beiträge zur Kenntnis des Süßwasserplanktons. Arch. Hydrobiol. Planktonkunde 5:71–78.
- HUBER-PESTALOZZI, G. 1942. Diatomeen. In Das Phytoplankton des Süsswassers, Systematik und Biologie (A. Thienemann, ed.), 2:367–549.
- HUSTEDT, F. 1930. Bacillariophyta (Diatomeae). Die Süßwasser-Flora Mitteleuropas 10:1–466.
- JACKSON, D.A. 1993. Stopping rules in principal components analysis: a comparison of heuristical and statistical approaches. Ecology 74:2204–2214, <http://dx.doi.org/10.2307/1939574>
- KARTHICK, B. & KOCIOLEK, J.P. 2011. Four new centric diatoms (Bacillariophyceae) from the Western Ghats, South India. Phytotaxa 22:25–40.
- KRAMMER, K. & LANGE-BERTALOT, H. 1991. Freshwater flora of Central Europe. Bacillariophyceae: Centrales, Fragilariaceae, Eunotiaceae. In Süßwasserflora von Mitteleuropa. (H. Ettl, I. Gerloff, H. Heyning & D. Mollenhauer, eds). Stuttgart: G. Fischer, 576p.
- KÜTZING, F. 1842. Ueber Ceramium Ag. Linnaea 15:727–746.
- LEGENDRE, P. & LEGENDRE, L. 1998. Numerical Ecology. 2nd English ed. Amsterdam: Elsevier.
- LI, Y., CEN, J.Y., QI, Y.Z. & LÜ, S.H. 2009. Morphological features observations of *Urosolenia* in Chinese freshwaters. Acta Hydrobiol. Sin. 33(3):566–570, <http://dx.doi.org/10.3724/SP.J.1035.2009.00566>
- LOPES, M.R.M., FERRAGUT, C. & BICUDO, C.E.M. 2009. Phytoplankton diversity and strategies in regard to physical disturbances in a shallow, oligotrophic, tropical reservoir in Southeast Brazil. Limnética 28(1):159–174.
- LUND, J.W.G., KIPLING, C., LE CREN, E.D., 1958. The inverted microscope method of estimating algal numbers and the statistical basis of estimations by counting. Hydrobiologia 11:143–170, <http://dx.doi.org/10.1007/BF00007865>
- MCCUNE, B. & MEFFORD, M.J. 1999. PC-ORD. Multivariate analysis of Ecological Data, Version 4.0 for Windows.
- MEDVEDEVA, L.A., NIKULINA, T.V. & GENKAL, S.I. 2009. Centric diatoms (Coscinodiscophyceae) of fresh and brackish water bodies of the southern part of the Russian Far East. Oceanological and Hydrobiological Studies 38(2):139–164, <http://dx.doi.org/10.2478/v10009-009-0018-4>
- MELO, S., HUSZAR, V.L.M., ROLAND, F., ESTEVES, F.A. & BOZELLI, R.L. 2004. Phytoplankton diel variation and vertical distribution in two Amazonian flood-plain lakes (Batata Lake and Mussurá Lake, Pará-Brasil) with different mixing regimes. Amazoniana 18(1/2):1–10.
- MORALES, E.A. 2005. Observations of the morphology of some known and new fragilarioid diatoms (Bacillariophyceae) from Rivers in the USA. Phycol. Res. 53:113–133, <http://dx.doi.org/10.1111/j.1440-1835.2005.tb00363.x>
- NOGUEIRA, M.G., FERRAREZE, M., MOREIRA, M.L. & GOUVÊA, R.M. 2010. Phytoplankton assemblages in a reservoir cascade of a large tropical – subtropical river (SE, Brazil). Braz. J. Biol. 70(3):781–793, <http://dx.doi.org/10.1590/S1519-69842010000400009>
- RAMBERG, L. 1987. Phytoplankton succession in the Sanyati basin, Lake Kariba. Hydrobiol. 153:193–202, <http://dx.doi.org/10.1007/BF00007206>
- RAUPP, S.V., TORGAN, L.C. & MELO, S. 2009. Planktonic diatom composition and abundance in the Amazonian floodplain Cutiuaú Lake are driven by the flood pulse. Acta Limnol. Brasil. 21(2):227–234.
- REYNOLDS, C.S. 2006. The ecology of phytoplankton. Cambridge: Cambridge University Press,
- REYNOLDS, C.C., HUSZAR, V., KRUK, C., NASELLI-FLORES, L. & MELO, S. 2002. Towards a functional classification of the freshwater phytoplankton. Journal of Plankton Research 24(5):417–428.
- RIBEIRO, L.H., KISHI, R., BRASSAC, N.M. & LUDWIG, T.A.V. 2006. Metodologia aplicada para avaliação da qualidade das águas superficiais em reservatórios da COPEL e corpos hídricos relacionados. Curitiba: LACTEC. 18p.
- RIVERA, P. 1974. Diatomeas de la Laguna Verde del Parque Hualpen, Chile. I. Interesantes representantes del genero *Atteya* (West, 1860). Boletín Sociedad de Biología de Concepción 47:87–91.
- ROTT, E., KLING, H. & MCGREGOR, G. 2006. Studies on the diatom *Urosolenia* Round & Crawford (Rhizosoleniophycidae) Part 1. New and re-classified species from subtropical and tropical freshwaters. Diatom Res. 21:105–124.
- ROUND, F.E., CRAWFORD, R.M. & MANN, D.G. 1990. The diatoms: biology and morphology of the genera. Cambridge University Press, Cambridge.
- SALA, S.E., NÚÑEZ-AVELLANEDA, M. & VOUILLOUD, A.A. 2008. Ultrastructure of the frustule *Urosolenia* species from the Colombian and Peruvian Amazon: *U. delicatissima* spec. nov., *U. amazonica* spec. nov. and *U. braunii* (Hustedt) root e Kling. Diatom Res. 23(1):159–169, <http://dx.doi.org/10.1080/0269249X.2008.9705744>
- SHIRATA, M.T. & VALENTE-MOREIRA, I.M. 1987. Ocorrência das diatomáceas *Atteya zachariasii* e *Surirella stalagma* no lago Parque São Lourenço, Curitiba, PR, Brasil. Acta Biol. Par. 16(1–4):87–92.
- SILVA, C.A., TRAIANT, S. & RODRIGUES, L.C. 2005. Phytoplankton assemblages in a Brazilian subtropical cascading reservoir system. Hydrobiologia 537:99–109, <http://dx.doi.org/10.1007/s10750-004-2552-0>
- SILVA, W.J., NOGUEIRA, I.S. & SOUZA, M.G.M. 2011. Catálogo de diatomáceas da região Centro-Oeste brasileira. Iheringia, Série Botânica, 66(1):1–32.
- SOKAL, R.R. & ROHLF, F.J. 1981. Biometry. Second Edition. New York: W. H. Freeman.
- STATSOFT, INC. 2005. Statistica (data analysis software system). Version 7.1. <http://www.statsoft.com> (Accessed in 12/07/2014).
- TORGAN, L.C. & BECKER, V. 1998. The transfer of *Rhizosolenia eriensis* H.L. Smith var. *morsa* W. West et G.S. West to *Urosolenia* (Bacillariophyceae). Iheringia, Série Botânica, 50:89–97.
- TORGAN, C.T., BECKER, V. & PRATES, H.M. 1999. Checklist das diatomáceas (Bacillariophyta) de ambientes de águas continentais e costeiras do Estado do Rio Grande do Sul, Brasil. Iheringia, Série Botânica, 52:89–144.
- TREMARIN, P.I., FREIRE, E.G. & LUDWIG, T.A.V. 2013. Ultrastructure and distribution of *Urosolenia obesa* sp. nov. (Rhizosoleniaceae, Diatomeae) in reservoirs from Southern Brazil. Phytotaxa 125(1):1–9.
- TREMARIN, P.I., FREIRE, E.G., BERTOLLI, L.M. & LUDWIG, T.A.V. 2009. Catálogo das diatomáceas (Ochrophyta-Diatomeae) continentais do estado do Paraná. Iheringia, Série Botânica, 64(2):79–107.
- UHELINGER, V. 1964. Étude statistique des méthodes de dénombrement planctonique. Journal of Archaeological Science, 17:121–123.
- UTERMÖHL, H. 1958. Zur vervollkommnung der quantitativen phytoplankton methodik. Mitteilung Internationale Vereinigung für Theoretische und Angewandte Limnologie 9:1–38.
- ZACHARIAS, O. 1893. Faunistische und biologische Beobachtungen am Grosser Ploner See. Forschungsber. Biol. Stat. Plön/Berlin, p. 1–52.
- ZACHARIAS, O. 1898. Mitteilungen über *Atheya zachariasii* Brun und *Rhizosolenia longiseta* Zach. Biologisches Centralblatt 18(5): 161–166.
- ZAR, J.H. 2010. Biostatistical analysis. New Jersey: Prentice Hall.

Received 20/03/2014
 Revised 8/10/2014
 Accepted 27/11/2014