

# FGF-2, TGF $\beta$ -1, PDGF-A and respective receptors expression in pleomorphic adenoma myoepithelial cells: an *in vivo* and *in vitro* study

Lucyene MIGUITA<sup>1</sup>, Elizabeth Ferreira MARTINEZ<sup>2</sup>, Ney Soares de ARAÚJO<sup>2</sup>, Vera Cavalcanti de ARAÚJO<sup>2</sup>

1- DDS, MSc, Department of Oral Pathology, São Leopoldo Mandic Institute and Research Center, Campinas, SP, Brazil.

2- DDS, MSc, PhD, Department of Oral Pathology, São Leopoldo Mandic Institute and Research Center, Campinas, SP, Brazil.

**Corresponding address:** Prof. Dr. Vera Cavalcanti de Araújo - Instituto e Centro de Pesquisas São Leopoldo Mandic - Rua Vicente Leporace, no. 1220 apto 91 - 04619-033 - São Paulo, SP, Brasil - Phone: +55-11-5044-0762 - Fax: +55-11-5041-2992 - e-mail: vcaraujo@slmandic.com.br

Received: March 23, 2009 - Accepted: July 13, 2009

## ABSTRACT

Myoepithelial cells have an important role in salivary gland tumor development, contributing to a low grade of aggressiveness of these tumors. Normal myoepithelial cells are known by their suppressor function presenting increased expression of extracellular matrix genes and protease inhibitors. The importance of stromal cells and growth factors during tumor initiation and progression has been highlighted by recent literature. Many tumors result from the alteration of paracrine growth factors pathways. Growth factors mediate a wide variety of biological processes such as development, tissue repair and tumorigenesis, and also contribute to cellular proliferation and transformation in neoplastic cells. Objectives: This study evaluated the expression of fibroblast growth factor-2 (FGF-2), transforming growth factor  $\beta$ -1 (TGF $\beta$ -1), platelet-derived growth factor-A (PDGF-A) and their respective receptors (FGFR-1, FGFR-2, TGF $\beta$ R-II and PDGFR- $\alpha$ ) in myoepithelial cells from pleomorphic adenomas (PA) by *in vivo* and *in vitro* experiments. Material and Methods: Serial sections were obtained from paraffin-embedded PA samples obtained from the school's files. Myoepithelial cells were obtained from explants of PA tumors provided by surgery from different donors. Immunohistochemistry, cell culture and immunofluorescence assays were used to evaluate growth factor expression. Results: The present findings demonstrated that myoepithelial cells from PA were mainly positive to FGF-2 and FGFR-1 by immunohistochemistry and immunofluorescence. PDGF-A and PDGFR- $\alpha$  had moderate expression by immunohistochemistry and presented punctated deposits throughout cytoplasm of myoepithelial cells. FGFR-2, TGF $\beta$ -1 and TGF $\beta$ R-II were negative in all samples. Conclusions: These data suggested that FGF-2 compared to the other studied growth factors has an important role in PA benign myoepithelial cells, probably contributing to proliferation of these cells through the FGFR-1.

**Key words:** Myoepithelial cells. Pleomorphic adenoma. Growth factors. FGF-2. TGF $\beta$ -1. PDGF-A.

## INTRODUCTION

Myoepithelial cells are important components of benign and malignant salivary gland tumors contributing to histological diversity and low grade pattern of these tumors<sup>2,5,6</sup>. It is known that

normal myoepithelial cells have an important role as tumor suppressors, being therefore a defense against cancer progression<sup>5,42</sup>.

Pleomorphic adenoma (PA) is the most common type of benign salivary gland tumor in both major and minor salivary glands being a

good source of myoepithelial cells, different from breast gland tumors<sup>4</sup>.

Several growth factors are involved in the initiation and progression of tumors, as autocrine and paracrine mediators. These include the family of fibroblast growth factor (FGF), transforming growth factor  $\beta$  (TGF $\beta$ ) and platelet-derived growth factor (PDGF), which are predominant stimulators of cell proliferation and present in the pathogenesis of many tumors, including salivary gland tumors<sup>12,21,26,27,32,43,48</sup>.

The FGF2 also referred as basic FGF (FGFb), is a member of 22 polypeptides localized in the extracellular matrix (ECM), cytoplasm and nucleus of the cells<sup>11,21</sup>. Several functions are attributed to this growth factor such as: mitogenic function, cell differentiation, angiogenesis, phenotypic transformation<sup>3,47</sup>, and survival of tumor and stem cells<sup>13,14,33,46</sup>. In normal myoepithelial cell and myoepithelial-like cell lines of mammary gland, FGF2 is considered to be a product derived from these cells<sup>19,37</sup>, and its enhanced expression is associated to the differentiation of epithelial cells into myoepithelial-like phenotype<sup>19</sup>. The FGF transmembrane receptors FGFR-1 or Flg and FGFR-2 or Bek are required in the development of many tissues, including salivary gland<sup>15,17,28,31</sup>.

The PDGF is a family of five cationic homo- and heterodimer isoforms, considered a product of platelet cells synthesized by different cell types<sup>1</sup>. Its synthesis is in response to external

stimuli, such as exposure to low oxygen tension<sup>1,12</sup> or stimulation by other cytokines and growth factors<sup>1</sup>. It has an important role as an autocrine growth factor for PDGF receptor-positive tumor cells<sup>16,38</sup>, but it is poorly elucidated in salivary gland tumors. This factor exerts its biologic effects by inducing homo- or heterodimeric complexes of  $\alpha$ - and  $\beta$ - tyrosine kinase receptors, PDGFR- $\alpha$  and PDGFR- $\beta$ <sup>1,16</sup>. Both receptors can activate signal transduction pathways, stimulating cell growth and angiogenesis, whereas activation of the PDGFR- $\alpha$  inhibits and stimulates chemotaxis of certain cell types<sup>1</sup>.

TGF $\beta$  is a highly pleiotropic cytokine present in mammals that modulates proliferation, differentiation, apoptosis, adhesion, and migration of various cell types and favors the production of ECM proteins<sup>36</sup>. Production of TGF $\beta$  is part of the regulatory mechanism controlling the growth and differentiation of both non-malignant and malignant cells<sup>34</sup>. TGF $\beta$ -1 initiates intracellular signaling by two types of transmembrane receptors known as type I (TGF $\beta$ RI) and type II (TGF $\beta$ RII) receptors<sup>7,34</sup>.

Based on the role of growth factors in tumors, the aim of this study was to analyze the expression of FGF-2, TGF $\beta$ -1, PDGF-A, and their respective receptors (FGFR-1, FGFR-2, TGF $\beta$ -II and PDGFR- $\alpha$ ) on benign myoepithelial cells from PA *in vivo* by immunohistochemistry and also *in vitro* by immunofluorescence.

Case	Gender	Age (years)	Localization
1	Male	20	Upper Lip
2	Female	*	Upper Lip
3	Female	30	Upper Lip
4	Female	22	Submandibular region
5	Female	23	Parotid
6	Female	28	Hard Palate
7	Female	56	Upper Lip
8	Female	25	Upper Lip
9	Female	36	Hard Palate
10	Female	25	Upper Lip
11	Female	28	Hard Palate
12	Female	39	Palate

\*Not available.

**Figure 1-** Sex, age and localization of the pleomorphic adenoma

## MATERIAL AND METHODS

### Immunohistochemistry

The research protocol was approved by the Research Ethics Committee of São Leopoldo Mandic Institute and Research Center, Campinas, Brazil (Protocol # 07/124).

Twelve cases of PA were retrieved from the files of the Department of Pathology, São Leopoldo Mandic Institute and Research Center, Campinas, Brazil (Figure 1).

Three-micrometer-thick serial sections were obtained from paraffin-embedded samples and the dewaxed sections were processed to antigen retrieval. Endogenous peroxidase was blocked by incubation with 3% hydrogen peroxide and methanol (1:1). After washing, sections were incubated with primary polyclonal antibodies (Figure 2). Signal detection was performed using the DAKO EnVision Peroxidase (DakoCytomation, Carpinteria, CA, USA), followed by a diaminobenzidine chromogen solution and counterstaining with Mayer's hematoxylin. The reactions were executed by Dako Autostainer Plus (DakoCytomation).

The labeled sections were qualitatively evaluated by two examiners observing cytoplasm and/or nuclear positive stained cells. The immunohistochemical reaction was evaluated according to the extent of positive staining using the following score, by percentage: 0, staining

from 0 to 10%; 1, staining from 10 to 25%; 2, staining from 25 to 50%; 3, staining up to 50%.

### Cell Culture

Myoepithelial cells were obtained from explants of PA tumors (cases 4, 5 and 8) provided by surgery from different donors. This part of the study was conducted after approval of the Research Ethics Committee of São Leopoldo Mandic Institute and Dental Research Center, Campinas, Brazil (Protocol # 2009/0014).

The obtained cells were cultured in Dulbecco's modified Eagle medium (DMEM, Sigma-Aldrich Inc., St Louis, MO, USA) supplemented by 1% antimycotic-antibiotic solution (10000 units penicillin, 10 mg streptomycin and 25 µg amphotericin B *per* mL in 0.9% sodium chloride; Sigma®), containing 10% of fetal bovine serum (FBS; Gibco, Buffalo, NY, USA), plated in 60-mm diameter plastic culture dishes and incubated under standard cell culture conditions (37°C, 100% humidity, 95% air, and 5% CO<sub>2</sub>). When the cells reached confluence, they were detached with 0.05% trypsin and subcultured at a density of 20,000 cells/well (~110 cells/mm<sup>2</sup>). The cells were used at subculture levels 3 or 4, and the cells were characterized using anti- $\alpha$  smooth muscle actin, anti-calponin and anti-vimentin (Figure 4 A-C). CK7 was also analyzed (Figure 4 D). The primary polyclonal antibodies are described at Figure 2.

Antibody	Immunohistochemical Dilution	Immunofluorescence Dilution	Host	Sources
FGF-2	1:100	1:50	Rabbit	St. Cruz Biotechnology <sup>1</sup>
FGFR-1	1:150	1:100	Rabbit	St. Cruz Biotechnology <sup>1</sup>
FGFR-2	1:50	1:50	Rabbit	St. Cruz Biotechnology <sup>1</sup>
TGF $\beta$ -1	1:200	1:100	Rabbit	St. Cruz Biotechnology <sup>1</sup>
TGF $\beta$ R-II	1:50	1:50	Rabbit	St. Cruz Biotechnology <sup>1</sup>
PDGF-A	1:50	1:50	Rabbit	St. Cruz Biotechnology <sup>1</sup>
PDGFR- $\alpha$	1:100	1:50	Rabbit	St. Cruz Biotechnology <sup>1</sup>
Vimentin	1:300	1:300	Mouse	Dako <sup>2</sup>
$\alpha$ -smooth muscle actin	1:300	1:50	Mouse	Dako <sup>2</sup>
Calponin	1:50	1:20	Mouse	Dako <sup>2</sup>
CK7	1:100	1:50	Mouse	Dako <sup>2</sup>

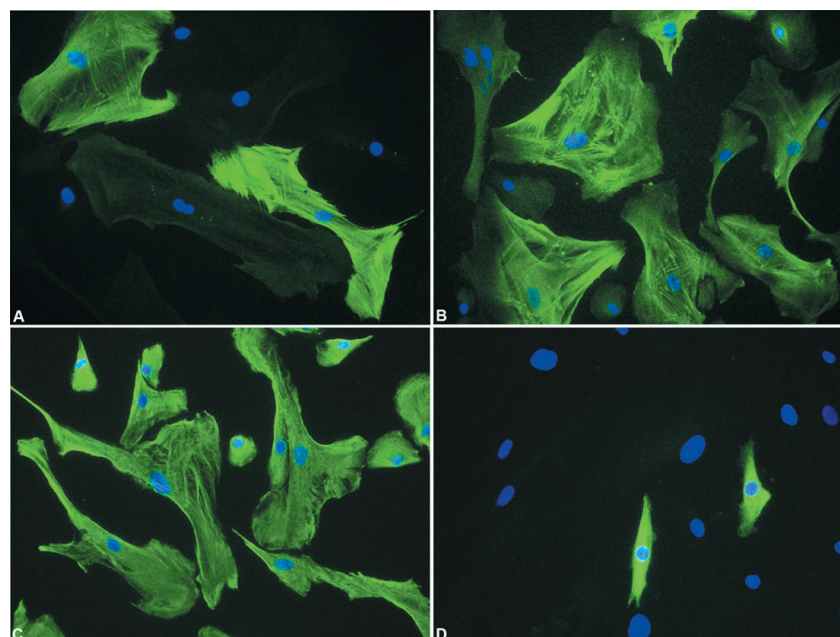
<sup>1</sup> Santa Cruz Biotechnology, Inc., Santa Cruz, CA, USA. <sup>2</sup>DakoCytomation, Carpinteria, CA, USA.

**Figure 2-** Primary polyclonal antibodies

Case	FGF-2	FGFR-1	FGFR-2	TGF $\beta$ -1	TGF $\beta$ R-2	PDGF-A	PDGFR- $\alpha$
1	3	2	0	0	0	0	0
2	3	3	0	0	0	0	1
3	3	3	0	0	0	1	1
4	3	2	1	0	0	1	1
5	3	3	1	0	0	1	1
6	3	2	0	0	0	0	1
7	3	2	0	0	0	0	1
8	3	3	0	0	0	1	1
9	3	3	2	0	0	1	1
10	3	3	1	0	0	1	1
11	3	3	1	0	0	0	0
12	3	3	1	0	0	0	0

Score 0: 0- 10% of positive cells; Score 1: 10- 25% of positive cells; Score 2: 25- 50% of positive cells; Score 3: up to 50% of positive cells.

**Figure 3-** Immunohistochemical expression of FGF-2, PDGF-A, TGF $\beta$ -1 and respective receptors in myoepithelial cells of pleomorphic adenoma



**Figure 4-** Immunostaining for  $\alpha$ -AML (A), calponin (B), vimentin (C) and CK7 (D) in myoepithelial cells from PA. Observe that some myoepithelial cells were negative for  $\alpha$ -AML (A) and calponin (B), but all cells were immunoreactive for vimentin (C). Rare cells expressed CK-7 (D). Nuclei stained with DAPI appear in blue. Original magnification- A-D:  $\times 200$

### Immunofluorescence

Cells grown on coverslips were fixed in methanol for 6 min at 20°C, rinsed in PBS followed by blocking with 1% bovine albumin in phosphate buffer saline (PBS) for 30 min at room temperature. The primary polyclonal antibodies are described at Figure 2. Control staining reaction was performed using PBS as non-

immune IgGs at the same dilution used for the primary antibody. The secondary antibodies used were biotinylated anti-rabbit and anti-mouse IgG (Vector Laboratories Inc, Burlingame, CA, USA). Fluorescein-streptavidin conjugated (Vector) were used for the second step. After washing, preparations were mounted using Vectashield DAPI-associated (4'-6-diamidino-2-phenylindole)

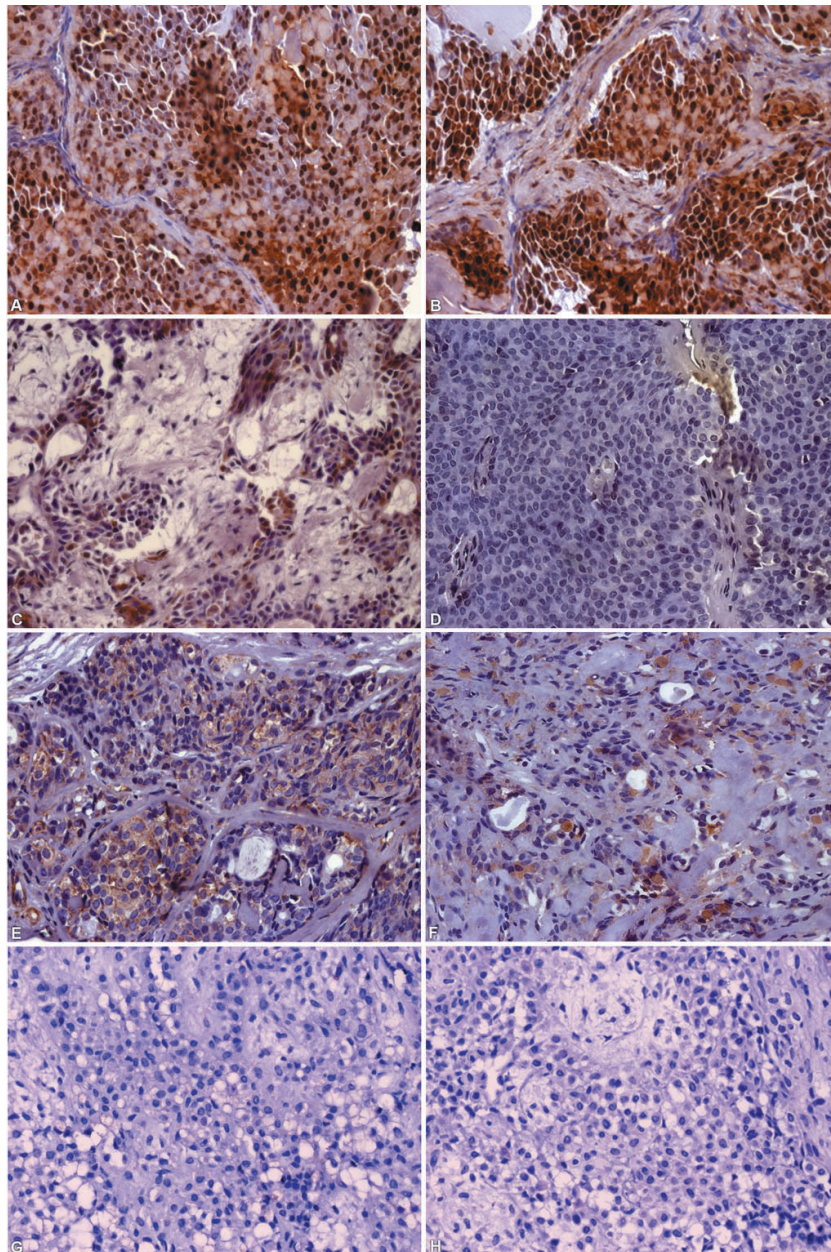


(Vector) and observed on a Zeiss Axioskop 2 conventional fluorescence microscope (Zeiss, Carl Zeiss MicroImaging, Oberkochen, Germany) equipped with  $\times 63$  Plan Apochromatic 1.4NA and  $\times 100$  Plan Apochromatic 1.4NA objectives in standard conditions (Zeiss®).

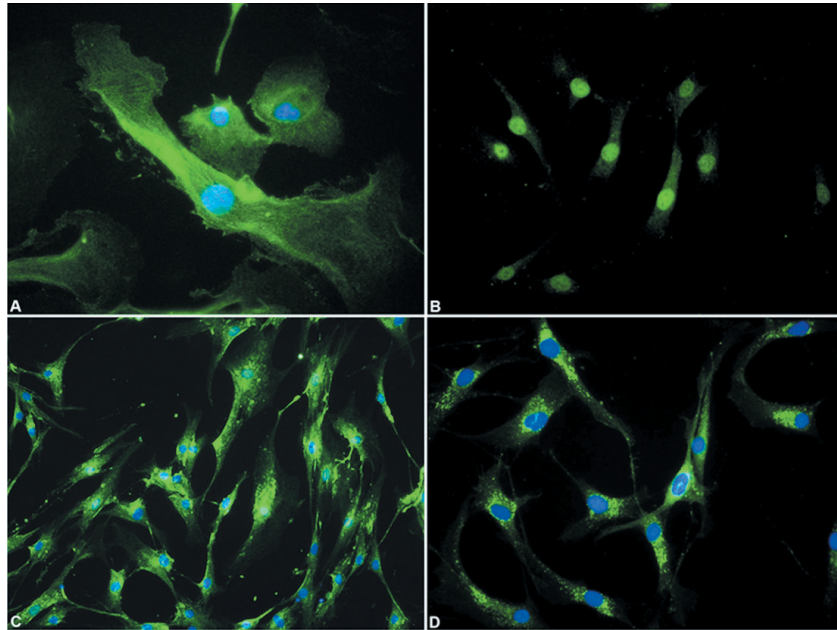
## RESULTS

### Immunohistochemistry

FGF-2 was strongly expressed in most cytoplasm and nuclei of PA myoepithelial cells (Figure 5A and B). FGFR-1 was immunoreactive in some cytoplasm and nucleus (Figure 5C). On the other hand, there was no FGFR-2 expression (Figure 5D) except for focal cells in two cases (data not shown). PDGF-A immunostaining was



**Figure 5-** Immunohistochemical expression of FGF-2 (A and B), FGFR-1 (C), FGFR-2 (D), PDGF-A (E), PDGF- $\alpha$  (F), TGF- $\beta$  (G) and TGF $\beta$ R-II (H). Observe that most myoepithelial cells were strongly positive for FGF-2 (A and B), while for FGFR-1 only some cells were immunostained (C). No expression was observed for FGFR-2 (D). PDGF-A (E) and PDGFR- $\alpha$  (F) were moderately immunoreactive in some cytoplasm and nuclei of myoepithelial cells. No reaction for TGF- $\beta$  (G) and TGF $\beta$ R-II (H) was observed. Original magnification- A-H:  $\times 400$



**Figure 6-** Immunostaining for FGF-2 (A), FGFR-1 (B), PDGF-A (C) and PDGFR- $\alpha$  (D) in myoepithelial cells from PA. FGF-2 was expressed as a reticular network in all cytoplasm (A). FGFR-1 was immunoreactive mainly in the nuclei of the cells (B). PDGF-A (C) and PDGFR- $\alpha$ (D) were immunoexpressed as punctate deposits throughout the cytoplasm. Nuclei stained with DAPI appear in blue. Original magnification- A-D:  $\times 400$

moderate in the cytoplasm and in some nuclei of myoepithelial cells (Figure 5E) with the same pattern of immunoreaction for PDGFR- $\alpha$  (Figure 5F). TGF $\beta$ -1 (Figure 5G) and TGF $\beta$ R-2 were negative in all studied cases (Figure 5H).

Figure 3 summarizes the expression of the growth factors and their receptors.

### Immunofluorescence

FGF-2 was immunoexpressed in all myoepithelial cells and was detected as a diffuse reticular network throughout the cytoplasm (Figure 6A). FGFR-1 immunostaining all myoepithelial cells, mainly in the nucleus (Figure 6B). PDGF-A (Figure 6C) and PDGFR- $\alpha$  (Figure 6D) were immunoexpressed as punctate deposits throughout the cytoplasm. No immunoreactivity for FGFR-2, TGF $\beta$ -1 and TGF $\beta$ R-II was observed in the myoepithelial cell cultures (data not shown).

### DISCUSSION

The present findings demonstrated that FGF-2 and FGFR-1 were the main expressed factors in myoepithelial cells from PA by *in vivo* and *in*

*vitro* experiments compared with the FGFR-2, PDGF-A, PDGFR- $\alpha$ , TGF $\beta$ -1 and TGF $\beta$ R-II.

The benign myoepithelial cell has an important role in salivary gland tumor development. Tumors composed of these cells have low aggressiveness<sup>2</sup>. It is known that normal myoepithelial cells have a suppressor function, presenting increased expression of ECM genes and protease inhibitors and reduced expression of angiogenic factors and proteinases<sup>5,42</sup>.

Pleomorphic adenoma is reported to be a great source of myoepithelial cells<sup>4</sup>. In the present study, this evidence was confirmed by the *in vitro* characterization of myoepithelial cell line from PA, which presented mainly positive myoepithelial markers (anti- $\alpha$  smooth muscle actin, anti-calponin and anti-vimentin) and negative or rare positive cells for luminal markers (CK-7 and AE1/AE3). In addition, in the present study growth factors that promote the outgrowth of epithelial cells have not been added to the cultures.

In the present study, FGF-2 was strongly expressed in most cytoplasm and nucleus of PA myoepithelial cells by immunohistochemistry. It is known that FGF-2 is an important growth factor involved in cell proliferation<sup>9</sup> and differentiation<sup>10</sup>.

It can be found in ECM, cytoplasm and nucleus of the cells<sup>11,29</sup> activating signal pathways by transmembrane receptors, acting as an autocrine and paracrine factor<sup>5,26,27</sup>.

The immunofluorescence assay confirmed the reactivity of myoepithelial cells to FGF-2, mainly in the cytoplasm exhibiting a diffuse reticular network. Taverna, et al.<sup>45</sup> (2008) demonstrated that intracellular trafficking of endogenous FGF-2, destined for secretion into the ECM, is related with the presence of actin filament. This might explain the reticular and diffuse expression pattern of this growth factor throughout the cytoplasm. Myoepithelial cells from PA were positive to FGFR-1, by immunohistochemistry assay, in both cytoplasm and nucleus. Nuclear immunoexpression was mainly evident in the *in vitro* assay.

In general, the majority of growth factor receptors play their role in signal transduction at the cell surface, which activates ligand-dependent intracellular signaling networks<sup>35</sup>. However, some studies have demonstrated a different pathway involving nuclear translocation after internalization<sup>8,18,49</sup>.

It is demonstrated that FGFR-1, which is also a transmembrane protein, translocate to the nucleus after ligand stimulation that is mediated by importin- $\alpha$  and E-cadherin<sup>8,35,41</sup>, playing a role in the regulation of cell cycle. In malignant salivary gland tumors, the overexpression of FGF-2 and FGFR-1 facilitates neoplastic progression<sup>21,27</sup>. FGFR-2 expression was negative in all myoepithelial cells both in *in vivo* and *in vitro* results. In the literature, FGFR-2 has been considered as risk factor in breast cancer<sup>24</sup> and contributes to cell growth, invasiveness, motility and angiogenesis<sup>22,25</sup>. The absence of FGFR-2 in PA is in accordance with the benign behavior of this tumor.

In the present study, no immunoreactivity for TGF $\beta$ -1 and TGF $\beta$ R-II was observed in PA and neither in the myoepithelial cell cultures, which is in accordance with the results of Kusafuka, et al.<sup>20</sup> (2001).

Numerous studies have demonstrated that TGF $\beta$ -1 may strongly inhibit growth and induce apoptosis in nontransformed cells. In malignant

tumors, the loss of TGF $\beta$ -1 is associated with tumor immunosurveillance<sup>39</sup>. In established tumors, TGF $\beta$ -1 exerts a favorable effect for the survival, progression and metastasis mainly related with malignant tumors<sup>30,40</sup>.

PDGF-A immunohistochemical expression was moderate in the cytoplasm and nucleus of some myoepithelial cells with the same pattern of immunoreaction for PDGFR- $\alpha$ . This factor has a paracrine function in PDGFR positive cells and stimulates the stroma to up-regulate FGF-2, promoting angiogenesis and cell proliferation in neoplastic cells<sup>32</sup>.

PDGF is related to malignant transformation, as previously demonstrated. Demasi, et al.<sup>12</sup> (2008) observed that PDGF-A and PDGFR- $\alpha$  were slightly detected in remnant pleomorphic adenoma presented in CXPA, but they were collectively highly expressed as soon as the malignant phenotype was achieved and they were kept on elevated levels during the progression to the advanced stages of CXPA.

We have also observed that PDGF-A and its receptor, by immunofluorescence, were present as punctate deposits throughout the cytoplasm. The punctate pattern of PDGF-A and PDGFR- $\alpha$  expression is justified because they regulate intracellular signal transduction by internalization to cytoplasm cell via caveolae endocytosis<sup>23</sup>. Caveolae is flask-shaped plasma membrane invaginations that mediate endocytosis and transcytosis of plasma macromolecules, and also growth factors as PDGF, present in cytoplasm of cells as a punctate pattern<sup>23,44</sup>.

The results obtained both *in vivo* and *in vitro* assays were very similar, demonstrating that FGF-2, compared to the other studied growth factors, is an important factor in myoepithelial cells of PA, probably contributing to PA proliferation through the FGFR-1.

## CONCLUSION

FGF-2 may have an important role in PA myoepithelial cell proliferation mediated by FGFR-1 receptor.



## ACKNOWLEDGMENTS

The authors wish to thank Audrey Jordão Basso, Jeruza Pinheiro da Silveira Bossonaro and Pollyanna Tombini Montaldi for their excellent technical expertise and assistance. This study was supported by FAPESP (grant 04/07960-0).

## REFERENCES

- 1- Alvarez RH, Kantarjian HM, Cortes JE. Biology of platelet-derived growth factor and its involvement in disease. *Mayo Clin Proc.* 2006;81(9):1241-57.
- 2- Araújo VC, Altemani A, Furuse C, Martins MT, Araújo NS. Immunoprofile of reactive salivary myoepithelial cells in areas of *in situ* carcinoma ex-pleomorphic adenoma. *Oral Oncol.* 2006;42:1011-6.
- 3- Baldin V, Roman A, Bosc-Bierne I, Amalric F, Bouche G. Translocation of bFGF to the nucleus is G1 phase cell cycle specific in bovine aortic endothelial cells. *EMBO J.* 1990;9(5):1511-7.
- 4- Barsky SH, Alpaugh ML. Myoepithelium: methods of culture and study. In: Pfragner R, Freshney RI, editors. *Culture of human tumor cells.* New Jersey: John Wiley & Sons; 2004. p. 221-60.
- 5- Barsky SH, Karlin NJ. Myoepithelial cells: autocrine and paracrine suppressors of breast cancer progression. *J Mammary Gland Biol Neoplasia.* 2005;10(3):249-60.
- 6- Barsky SH. Myoepithelial mRNA expression profiling reveals a common tumor-suppressor phenotype. *Exp Mol Pathol.* 2003;74(2):113-22.
- 7- Bhowmick NA, Neilson EG, Moses HL. Stromal fibroblasts in cancer initiation and progression. *Nature.* 2004;432:332-7.
- 8- Bryant DM, Stow JL. Traffic interchange nuclear translocation of cell-surface receptors: lessons from fibroblast growth factor. *Traffic.* 2005;6(10):947-53.
- 9- Chaffer CL, Dopheide B, Savagner P, Thompson EW, Williams ED. Aberrant fibroblast growth factor receptor signaling in bladder and other cancers. *Differentiation.* 2007;75:831-42.
- 10- Chen Y, Li X, Eswarakumar VP, Seger R, Lonai P. Fibroblast growth factor (FGF) signaling through PI 3-kinase and Akt/PTB is require for embryoid body differentiation. *Oncogene.* 2000;19:3750-6.
- 11- Delrieu I. The high molecular weight isoforms of basic fibroblast growth factor (FGF-2): an insight into an intracrine mechanism. *FEBS Lett.* 2000;468:6-10.
- 12- Demasi APD, Furuse C, Soares AB, Altemani A, Araújo VC. Peroxiredoxin 1, platelet-derived growth factor A, and platelet-derived growth factor receptor  $\alpha$  are overexpressed in carcinoma ex pleomorphic adenoma: association with malignant transformation. *Hum Pathol.* 2009;40(3):390-7.
- 13- Dow JK, deVere White RW. Fibroblast growth factor 2: its structure and property, paracrine function, tumor angiogenesis, and prostate-related mitogenic and oncogenic functions. *Urology.* 2000;55:800-6.
- 14- Gabrilove JL. Angiogenic growth factors: autocrine and paracrine regulation of survival in hematologic malignancies. *Oncologist.* 2001;6(5):4-7.
- 15- Grose R, Dickson C. Fibroblast growth factor signaling in tumorigenesis. *Cytokine Growth Factor Rev.* 2005;16:179-86.
- 16- Heldin C, Westermark B. Mechanism of action and *in vivo* role of platelet-derived growth factor. *Physiol Rev.* 1999;79(4):1283-316.
- 17- Itoh N, Ornitz DM. Evolution of the FGF and FGFR gene families. *Trends Genet.* 2004;20(11):563-9.
- 18- Jans DA, Hassan G. Nuclear targeting by growth factors, cytokines, and their receptors: a role in signaling? *Bioessays.* 1998;20(5):400-11.
- 19- Ke Y, Fernig DG, Wilkinson MC, Winstanley JHR, Smith JA, Rudland PS, et al. The expression of basic fibroblast growth factor and its receptor in cell lines from normal human mammary gland and a benign mammary lesion. *J Cell Sci.* 1993;106:135-43.
- 20- Kusafuka K, Yamaguchi A, Kayano T, Takemura T. Immunohistochemical localization of members of the transforming growth factor (TGF)- $\beta$  superfamily in normal human salivary glands and pleomorphic adenomas. *J Oral Pathol Med.* 2001;30(7):413-20.
- 21- Kusafuka K, Yamaguchi A, Kayano T, Takemura T. Immunohistochemical localization of fibroblast growth factors (FGFs) and FGF receptor-1 in human normal salivary glands and pleomorphic adenomas. *J Oral Pathol Med.* 1998;27(7):287-92.
- 22- Liang J, Chen P, Hu Z, Zhou X, Chen L, Wang Y, et al. Genetic variants in fibroblast growth factor receptor 2 (FGFR2) contribute to susceptibility of breast cancer in Chinese women. *Carcinogenesis.* 2008;29(12):2341-6.
- 23- Liu J, Horner T, Rogers RA, Schinitzer JE. Organized endothelial cell surface signal transduction in caveolae distinct from glycosylphosphatidylinositol-anchored protein microdomains. *J Biol Chem.* 1997;272(11):7211-22.
- 24- Meyer KB, Maia A, O'Reilly M, Teschendorff AE, Chin S, Caldas C, et al. Allele-specific up-regulation of FGFR2 increases susceptibility to breast cancer. *PLoS Biol.* 2008;6(5):1098-103.
- 25- Moffa AB, Tannheimer SL, Ethier SP. Transforming potential of alternatively spliced variants of fibroblast growth factor receptor 2 in human mammary epithelial cells. *Mol Cancer Res.* 2004;2(11):643-52.
- 26- Myoken Y, Myoken Y, Okamoto T, Sato JD, Kan M, McKeenan WL, et al. Immunohistochemical localization of fibroblast growth factor-1 (FGF-1), FGF-2 and fibroblast growth factor receptor-1 (FGFR-1) in pleomorphic adenoma of the salivary glands. *J Oral Pathol Med.* 1997;26:17-22.
- 27- Myoken Y, Myoken Y, Okamoto T, Sato JD, Kan M, McKeenan WL, et al. Immunohistochemical localization of fibroblast growth factor-1 (FGF-1), FGF-2 and fibroblast growth factor receptor-1 (FGFR-1) in human malignant salivary gland tumors. *J Oral Pathol.* 1996;178:429-36.
- 28- Ohuchi H, Hori Y, Yamasaki M, Harada H, Sekine K, Kato S, et al. FGF10 acts as a major ligand for FGF receptor 2 IIIb in mouse multi-organ development. *Biochem Biophys Res Commun.* 2000;277:643-9.
- 29- Ornitz DM, Itoh N. Fibroblast growth factors – protein family review. *Genome Biol.* 2001;2(3):REVIEWS3005.
- 30- Pardali K, Moustakas A. Actions of TGF- $\beta$  as tumor suppressor and pro-metastatic factor in human cancer. *Biochim Biophys Acta.* 2006;1775(1):21-62.
- 31- Patel VN, Rebutini IT, Hoffman MP. Salivary gland branching morphogenesis. *Differentiation.* 2006;74:349-64.
- 32- Pietras K, Pahler J, Bergers G, Hanahan D. Functions of paracrine PDGF signaling in the proangiogenic tumor stroma revealed by pharmacological targeting. *PLoS Med.* 2008;5(1):e19.
- 33- Presta M, Dell'Era P, Mitola S, Moroni E, Ronca R, Rusnati M. Fibroblast growth factor/fibroblast growth factor receptor system in angiogenesis. *Cytokine Growth Factor Rev.* 2005;16(2):159-78.
- 34- Ranganathan P, Agrawal A, Bhushan R, Chavalmane AK, Kalathur RKR, Takahashi T, et al. Expression profiling of genes by TGF $\beta$ : Differential regulation in normal and tumor cells. *BMC Genomics.* 2007;8:98.
- 35- Reilly JF, Maher PA. Impotin $\alpha$ -mediated nuclear import of fibroblast growth factor receptor: Role in cell proliferation. *J Cell Biol.* 2001;152(6):1307-12.
- 36- Roberts AB. Molecular and cell biology of TGF- $\beta$ . *Miner Electrolyte Metab.* 1998;24(2-3):111-9.



- 37- Rudland PS, Fernig DG, Smith JA. Growth factors and their receptors in neoplastic mammary glands. *Biomed Pharmacother* 1995;49:389-99.
- 38- Schmahl J, Raymond CS, Soriano P. PDGF signaling specificity is mediated through multiple immediate early genes. *Nat Gen*. 2007;39(1):52-60.
- 39- Shah AH, Tabayoyong WB, Kimm SY, Kim SJ, Van Parijs L, Lee C. Reconstitution of lethally irradiated adult mice with dominant negative TGF-beta type II receptor-transduced bone marrow leads to myeloid expansion and inflammatory disease. *J Immunol*. 2002;169(7):3485-91.
- 40- Siegel PM, Shu W, Cardiff RD, Muller WJ, Massague J: Transforming growth factor beta signaling impairs Neu-induced mammary tumorigenesis while promoting pulmonary metastasis. *Proc Natl Acad Sci U S A*. 2003;100(14):8430-5.
- 41- Stachowiak MK, Maher PA, Stachowiak EK. Integrative nuclear signaling in cell development- a role for FGF receptor-1. *DNA Cell Biol*. 2007;26(12):811-26.
- 42- Sternlicht MD, Barsky SH. The myoepithelial defense: a host defense against cancer. *Med Hypotheses*. 1997;48(1):37-46.
- 43- Sumitomo S, Okamoto Y, Mizutani G, Kudeken W, Mori M, Takai Y. Immunohistochemical study of fibroblast growth factor-2 (FGF-2) and fibroblast growth factor receptor (FGF-R) in experimental squamous cell carcinoma of rat submandibular gland. *Oral Oncol*. 1999;35(1):98-104.
- 44- Sverdllov M, Shajahan AN, Minshal RD. Tyrosine phosphorylation-dependence of caveolae-mediated endocytosis. *J Cell Mol Med*. 2007;11(6):1239-50.
- 45- Taverna S, Rigogliuso S, Salamone M, Vittorelli ML. Intracellular trafficking of endogenous fibroblast growth factor-2. *FEBS J*. 2008;275:1579-92.
- 46- Yeoh JSG, Haan G. Fibroblast growth factors as regulators of stem cell self-renewal and aging. *Mech Ageing Dev*. 2007;128:17-24.
- 47- Yu Z, Biro S, Fu Y, Sanchez J, Smale G, Sasse J, et al. Localization of basic fibroblast growth factor in bovine endothelial cells: immunohistochemical and biochemical studies. *Exp Cell Res*. 1993;204:247-59.
- 48- Yura Y, Yoshioka Y, Yamamoto S, Kusaka J, Bando T, Yoshida H, et al. Enhancing effects of fibroblast growth factor on the proliferation of salivary gland carcinoma cells and salivary gland carcinogenesis. *J Oral Pathol Med*. 2001;30(3):159-67.
- 49- Zwaagstra JC, Guimond A, O'Connor-McCourt MD. Predominant intracellular localization of the type I transforming growth factor-beta receptor and increased nuclear accumulation after growth arrest. *Exp Cell Res*. 2000;258(1):121-34.