

## CLINICAL SCIENCE

# Risk factors for early treatment discontinuation in patients with obsessive-compulsive disorder

Juliana Belo Diniz,<sup>1</sup> Dante Marino Malavazzi,<sup>1</sup> Victor Fossaluza,<sup>1,II</sup> Cristina Belotto-Silva,<sup>1</sup> Sonia Borcato,<sup>1</sup> Izabel Pimentel,<sup>1</sup> Euripedes Constantino Miguel,<sup>1</sup> Roseli Gedanke Shavitt<sup>1</sup>

<sup>1</sup>Department & Institute of Psychiatry, University of São Paulo School of Medicine Hospital das Clínicas, São Paulo, Brazil. <sup>II</sup>Mathematics and Statistics Institute, University of São Paulo, São Paulo, Brazil.

**INTRODUCTION:** In obsessive-compulsive disorder, early treatment discontinuation can hamper the effectiveness of first-line treatments.

**OBJECTIVE:** This study aimed to investigate the clinical correlates of early treatment discontinuation among obsessive-compulsive disorder patients.

**METHODS:** A group of patients who stopped taking selective serotonin reuptake inhibitors (SSRIs) or stopped participating in cognitive behavioral therapy before completion of the first twelve weeks (total  $n=41$ ;  $n=16$  for cognitive behavioral therapy and  $n=25$  for SSRIs) were compared with a paired sample of compliant patients ( $n=41$ ). Demographic and clinical characteristics were obtained at baseline using structured clinical interviews. Chi-square and Mann-Whitney tests were used when indicated. Variables presenting a  $p$  value  $<0.15$  for the difference between groups were selected for inclusion in a logistic regression analysis that used an interaction model with treatment dropout as the response variable.

**RESULTS:** Agoraphobia was only present in one (2.4%) patient who completed the twelve-week therapy, whereas it was present in six (15.0%) patients who dropped out ( $p=0.044$ ). Social phobia was present in eight (19.5%) patients who completed the twelve-week therapy and eighteen (45%) patients who dropped out ( $p=0.014$ ). Generalized anxiety disorder was present in eight (19.5%) patients who completed the twelve-week therapy and twenty (50%) dropouts ( $p=0.004$ ), and somatization disorder was not present in any of the patients who completed the twelve-week therapy; however, it was present in six (15%) dropouts ( $p=0.010$ ). According to the logistic regression model, treatment modality ( $p=0.05$ ), agoraphobia, the Brown Assessment of Beliefs Scale scores ( $p=0.03$ ) and the Beck Anxiety Inventory ( $p=0.02$ ) scores were significantly associated with the probability of treatment discontinuation irrespective of interactions with other variables.

**DISCUSSION AND CONCLUSION:** Early treatment discontinuation is a common phenomenon in obsessive-compulsive disorder patients from our therapeutic setting. Psychiatric comorbidities were associated with discontinuation rates of specific treatments. Future studies might use this information to improve management for increased compliance and treatment effectiveness.

**KEYWORDS:** Obsessive-compulsive disorder; Anxiety disorders; Somatoform disorders; First-line treatments; Patient compliance.

Diniz JB, Malavazzi DM, Fossaluza V, Belotto-Silva C, Borcato S, Pimentel I et al. Risk factors for early treatment discontinuation in patients with obsessive-compulsive disorder. *Clinics*. 2011;66(3):387-393.

Received for publication on July 28, 2010; First review completed on October 4, 2010; Accepted for publication on November 16, 2010

E-mail: julianabelo.diniz@gmail.com

Tel.: 55 11 3069-6972

## INTRODUCTION

For the majority of obsessive-compulsive disorder (OCD) patients enrolled in controlled clinical trials, the use of selective serotonin reuptake inhibitors (SSRIs) or cognitive behavioral therapy (CBT) results in treatment success.<sup>1</sup> The

treatment success reported in controlled trials, however, may not be generalizable to clinical practice because of low treatment availability, high disease heterogeneity and low completion rates.<sup>2-4</sup>

A recent practical clinical trial for OCD showed completion rates for pharmacological and psychotherapeutic interventions that were much lower than those reported in previous controlled trials. Low completion rates were due to early treatment discontinuation (before twelve weeks of treatment) and were associated with low response rates.<sup>5</sup>

Reasons for treatment discontinuation can be intrinsic (related to the patient), or extrinsic (related to social

**Copyright** © 2011 CLINICS – This is an Open Access article distributed under the terms of the Creative Commons Attribution Non-Commercial License (<http://creativecommons.org/licenses/by-nc/3.0/>) which permits unrestricted non-commercial use, distribution, and reproduction in any medium, provided the original work is properly cited.

conditions and treatment characteristics, e.g., medication side effects). Intrinsic factors can include psychiatric comorbidities,<sup>6</sup> symptom characteristics,<sup>7</sup> disease severity,<sup>8</sup> and personality traits.<sup>9</sup> Understanding the reasons for early treatment interruption is essential for the delineation of more effective therapeutic strategies. In addition, the factors associated with the discontinuation of psychotherapeutic treatment might be different from those associated with the discontinuation of pharmacological treatment. Therefore, clarifying which factors are associated with noncompliance could help clinicians recognize and prescribe the treatment option that provides the greatest chance of compliance in a given patient.

Using a recently completed clinical trial as a test case, the objective of the present study was to determine whether there are clinical characteristics (with an emphasis on psychiatric comorbidities) associated with the early interruption of pharmacological or psychotherapeutic treatment.<sup>5</sup>

## MATERIALS AND METHODS

The present study was part of a larger treatment study conducted at an OCD outpatient clinic at the University of Sao Paulo School of Medicine - *Hospital das Clínicas*. We received local Institutional Review Board approval before inclusion of the first patient, and our methods followed the Code of Ethics of the World Medical Association (Declaration of Helsinki). Recruitment occurred between January 2006 and December 2007 with television advertisements, radio spots and newspaper announcements. A psychologist with extensive experience in OCD contacted the interested subjects to determine whether a diagnosis of OCD was likely. Initial selection criteria were patients with a probable diagnosis of OCD, who were not currently receiving appropriate treatment, but were seeking such treatment. Interested patients were scheduled for a psychiatric consultation during which eligible patients were invited to participate in the trial.

### Subjects

The inclusion criteria were a primary diagnosis of OCD according to the DSM-IV criteria and current symptoms causing significant distress (Yale-Brown Obsessive Compulsive Scale (YBOCS) > or = 16). Exclusion criteria included clinical or neurological disease that could be worsened by the drugs used in the treatment protocol, substance dependence, psychotic symptoms, risk for suicide, and pregnancy or intention to become pregnant.

Treatment discontinuation was defined as treatment interruption prior to the end of the twelve-week treatment period. Treatment interruption included the failure to initiate treatment after allocation was performed (patients who missed the first consultation/therapy session and were marked as "did not receive intervention" in figure 1), the failure to comply with scheduled visits, or the inability to tolerate medication side effects leading to an aversion to any psychopharmacological treatment alternative. Patients who were removed from the trial because of a clinical decision (e.g., perceived clinical risk) and patients who did not tolerate the SSRI that was initially prescribed but agreed to take another SSRI were not considered dropouts, but they were excluded from the analysis.

The dropout group was compared with a paired sample of patients who completed the twelve weeks of treatment (the completer group). Patients in the completer group were matched to those in the dropout group in terms of age, sex, first treatment assigned, and period of enrollment.

Figure 1 presents the flow chart.

Among the one hundred four patients allocated to receive an SSRI, nine did not report for the initial consultation, and thirty failed to complete the treatment. Only six patients allocated to receive an SSRI discontinued treatment due to side effects and did not tolerate a second SSRI; they were classified as dropouts. Six patients were excluded due to an interruption decision based on clinical risk, and eight were excluded for not having completed the baseline interviews before treatment discontinuation. Twenty-five of the patients who abandoned SSRI treatment had completed the baseline clinical interviews.

Among the eighty-three patients allocated to receive group CBT, eleven did not report for the initial consultation, and sixteen failed to complete treatment. Of the twenty-seven patients in the CBT group who dropped out, only sixteen had completed the baseline clinical interviews.

Therefore, the dropout group consisted of forty-one patients (twenty-five who abandoned SSRI treatment and sixteen who abandoned CBT).

After describing the study to the participants, we obtained written informed consents.

### Treatment

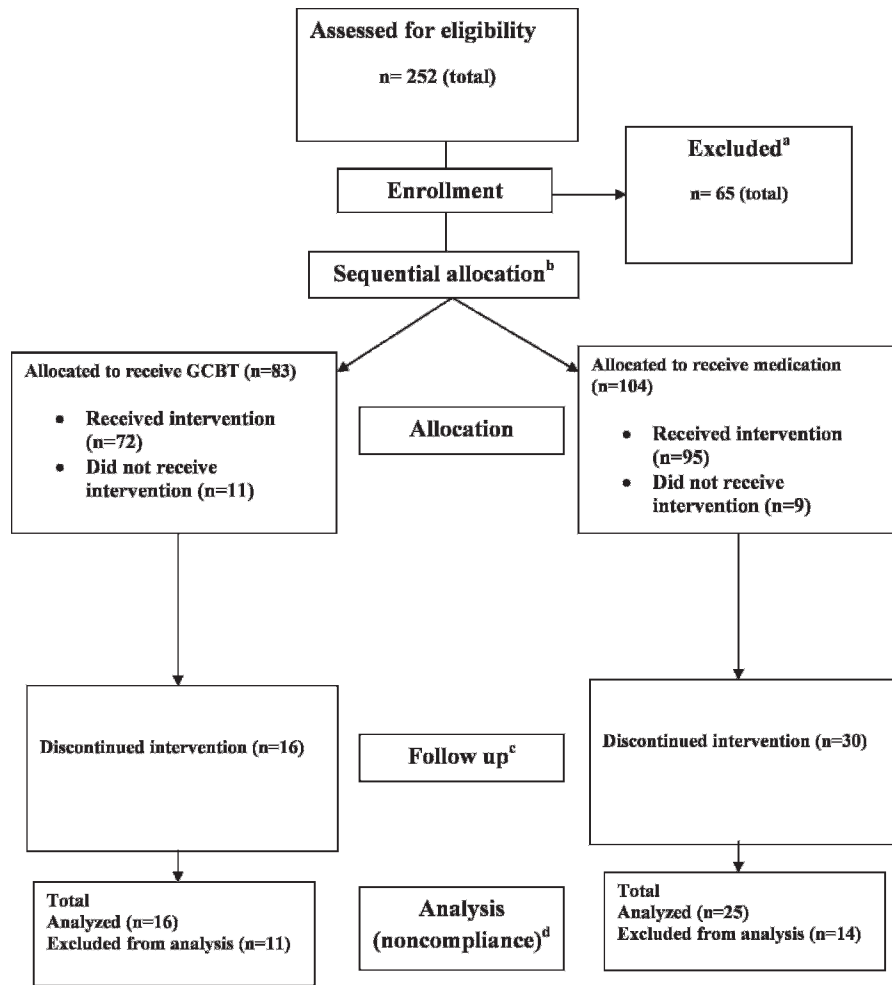
Patients who agreed to participate were sequentially allocated to receive an SSRI or group CBT. We used a method of sequential allocation that was devised by Fossaluza et al.,<sup>10</sup> which shares the objectives of previous minimization procedures.<sup>11</sup> Briefly, this method minimizes the possibility of differences between groups in a clinical trial that evaluates treatment efficacy by controlling for possible confounders, such as initial Y-BOCS score, gender, age, and previous treatment history. The advantage of the sequential allocation method is that it provides a mechanism to balance samples between group treatments.

To simulate the experience of naturalistic clinical settings, patients allocated to receive an SSRI were preferentially treated with fluoxetine, which is the most frequently used SSRI in Brazilian psychiatric clinical settings, and medical appointments were scheduled every four weeks during the first year of the trial. Patients were allowed unlimited telephone access to a psychiatrist. The potential side effects and the delayed onset of therapeutic effects were explained in detail at the first consultation. Patients were instructed to increase their fluoxetine dosage by 20 mg per week for the first month until the maximum tolerated dosage or 80 mg/day was reached.

Intolerable side effects were managed by reducing the dosage and administering symptomatic medication. If side effects persisted at the subsequent consultation, a second SSRI (sertraline) was used (n=6) in the place of fluoxetine.

A twelve-week group course using CBT was administered in weekly 2-h sessions with up to 10 patients per group. Additional information on the structured protocol employed can be found in the study conducted by Cordioli et al.<sup>12</sup>

Prior to treatment initiation, patients were evaluated using the following instruments:



Legend

GCBT, group cognitive-behavioral therapy.

**Figure 1** - Group cognitive behavioral therapy (GCBT).

<sup>a</sup>Reasons for exclusion were not having OCD as the primary diagnosis (n=29), refusal to participate (n=15), already receiving appropriate treatment (n=7), Yale-Brown Obsessive-Compulsive Scale score lower than 16 (n=10), suicide risk (n=2), or refractory to multiple previous treatments (n=2).

<sup>b</sup>Sequential allocation methodology has been described elsewhere.<sup>10</sup>

<sup>c</sup>Reasons for treatment discontinuation were failure to attend clinical consultations or therapy sessions (n=35), intolerable side effects to more than one medication (n=6), medication-induced hypomania (n=2), suicide attempt (n=1), development of paranoid symptoms regarding psychotherapy (n=2), and severe alcohol abuse during treatment (n=1).

<sup>d</sup>Analysis included all patients who abandoned treatment after sequential allocation. Exclusions were due to noncompletion of clinical interviews before treatment abandonment (n=19) and treatment interruption based on clinical risk rather than treatment abandonment (n=6).

*Structured Clinical Interview for DSM-IV Axis I Disorders – patient edition*,<sup>13</sup> *Structured Clinical Interview for Impulsive Disorders* adapted from DSM-IV criteria (available upon request)

The *Yale-Brown Obsessive-Compulsive Scale*<sup>14</sup>

The *Dimensional Yale-Brown Obsessive-Compulsive Scale*<sup>15</sup>

The *Brown Assessment of Beliefs Scale (BABS)*<sup>16</sup>

The *Beck Anxiety Inventory (BAI)*<sup>17</sup>

The *Beck Depression Inventory (BDI)*<sup>18</sup>

The *Social Adjustment Scale (SAS)*.<sup>19</sup>

Interviews were performed by experienced clinical psychiatrists or psychologists who had junior interviewer in at least three training sessions involving videotaped inter-

views and five involving live interviews performed by the senior interviewer. After this training, each junior interviewer conducted five interviews under the supervision of the senior interviewer. If there was agreement between the junior and senior interviewer on most of the results, the new interviewer was allowed to conduct interviews without assistance.

**Statistical analysis**

The dropout and completer groups were compared using the chi-square test for categorical variables and the Mann-Whitney test for continuous variables. Variables with a p value < 0.15 with respect to the difference between

groups in this initial analysis were included in a logistic regression analysis where dropping out was the response variable.

The logistic regression model was adjusted to estimate the chance of a specific patient abandoning treatment before completing the twelve weeks of the trial. We constructed the following formula, which considered the main effects and first-order interactions:

$$\log\left(\frac{\theta}{1-\theta}\right) = \beta_0 + \beta_1 X_1 + \dots + \beta_k X_k + \beta_{12} X_1 X_2 + \beta_{13} X_1 X_3 + \dots,$$

where  $\theta$  is the chance that a patient will abandon treatment,  $X_i$  is the  $i$ th variable,  $\beta_0$  is the intercept,  $\beta_i$  is the main effect of the  $i$ th variable, and  $\beta_{ij}$  is the interaction effect between the  $i$ th variable and the  $j$ th variable;  $i, j = 1, \dots, k$ ,  $j < i$ . The variables included in the model were chosen using the stepwise method, and they were based on the Akaike Information Criterion, which is a measure of the *goodness of fit* of an estimated statistical model.

Only current diagnoses were entered in the analysis.

## RESULTS

The comparisons between groups regarding demographic characteristics, age at obsessive compulsive symptoms onset, duration of illness, and OCD symptoms content are shown in Table I.

The groups did not differ in terms of sociodemographic characteristics or OCS content. Except for the higher severity of anxiety symptoms in the dropout group (measured with the BAI), there were no significant differences between groups for any of the measures of symptom severity. Interestingly, there was a tendency for lower insight in the dropout group, which was measured by the BABS ( $p = 0.074$ ).

Differences in Axis I psychiatric comorbidities between groups are shown in Table II.

There were significant differences between the two groups in terms of agoraphobia, social phobia, generalized anxiety disorder (GAD), and somatization disorder. Indeed, all of these disorders were more common in the dropout group. No significant differences were found for other psychiatric disorders.

**Table I - Demographic and clinical characteristics.**

Characteristic*	Completers	Dropouts	p†
Males:Females, n (%):n (%)	23 (56.1):18 (43.9)	23 (56.1):18 (43.9)	NA
Age (years), mean (SD)	33.8 (9.83)	33 (10.74)	NA
First treatment assigned			
SSRI, n (%)	25 (61)	25 (61)	NA
Group CBT, n (%)	16 (39)	16 (39)	NA
Marital status			0.122
Married, n (%)	20 (48.8)	11 (26.8)	
Divorced, n (%)	3 (7.3)	4 (9.8)	
Single, n (%)	18 (43.9)	26 (63.4)	
Socioeconomic level			0.490
Upper class, n (%)	1 (2.4)	3 (7.7)	
Middle class, n (%)	35 (85.4)	30 (76.9)	
Lower class, n (%)	5 (12.2)	6 (15.4)	
Employment status			0.439
Currently employed, n (%)	25 (61)	29 (70.7)	
Other**, n (%)	16 (39)	12 (29.3)	
Years of schooling, mean (SD)	13.7 (3.63)	13.3 (4.94)	0.703
Age at symptom onset (years), mean (SD)	15.1 (8.89)	12.3 (6.86)	0.159
Interval between symptom onset and first treatment received (years), mean (SD)	16.0 (12.60)	17.8 (11.85)	0.549
Duration of illness (years), mean (SD)	18.7 (12.02)	20.7 (11.46)	0.444
Symptoms, by dimension (DY-BOCS)			
Aggression, n (%)	26 (63.4)	30 (73.2)	0.342
Sexual and religious, n (%)	24 (58.5)	25 (61.0)	0.822
Symmetry and ordering, n (%)	37 (90.2)	36 (87.8)	0.724
Contamination and cleaning, n (%)	33 (80.5)	30 (73.2)	0.432
Hoarding, n (%)	19 (46.3)	20 (48.8)	0.825
Miscellaneous, n (%)	38 (92.7)	39 (97.5)	0.317
Beck Depression Inventory score, mean (SD)	17.4 (10.96)	21.3 (12.19)	0.147
Beck Anxiety Inventory score, mean (SD)	15.2 (9.94)	20.6 (11.45)	<b>0.030</b>
Social Adjustment Scale score, mean (SD)	2.3 (0.74)	2.4 (0.66)	0.197
BABS score, mean (SD)	4.2 (3.55)	6.8 (6.04)	0.074
DY-BOCS Global Severity score, mean (SD)	8.8 (1.34)	8.7 (1.90)	0.660
DY-BOCS Global Impairment score, mean (SD)	10.0 (3.10)	10.2 (2.69)	0.672
Y-BOCS obsessions score, mean (SD)	12.7 (2.93)	12.4 (3.26)	0.615
Y-BOCS compulsions score, mean (SD)	12.6 (2.67)	12.6 (3.24)	0.873
Overall Y-BOCS score, mean (SD)	25.3 (4.92)	25.1 (6.00)	0.874

\*Pearson's chi-square test was used for categorical variables, and the Mann-Whitney test was used for continuous variables.

†Groups were paired according to sex, age, first treatment assigned and period of inclusion in the trial.

\*\*Includes unemployment, retirement, part-time studies and unwaged domestic work. Full-time students were considered currently employed.

SD: standard deviation; SSRI: selective serotonin reuptake inhibitor; CBT: cognitive behavioral therapy; BABS: Brown Assessment of Beliefs Scale; DY-BOCS: Dimensional Yale-Brown Obsessive-Compulsive Scale; Y-BOCS: Yale-Brown Obsessive-Compulsive Scale.

**Table II - Psychiatric comorbidities.**

Axis I Diagnosis (DSM-IV)	Completers n (%)	Dropouts n (%)	p†
<b>Obsessive-compulsive spectrum disorders</b>	11 (26.8)	14 (34.1)	0.472
Chronic tic disorders	7 (17.1)	9 (22.5)	0.540
Tourette syndrome	1 (2.4)	4 (10.0)	0.157
Body dysmorphic disorder	5 (12.2)	5 (12.5)	0.967
Trichotillomania	1 (2.7)	0 (0.0)	0.308
<b>Mood Disorders</b>	19 (46.3)	26 (63.4)	0.120
Major depressive disorder	15 (36.6)	20 (48.8)	0.264
Dysthymia	4 (9.8)	8 (19.5)	0.211
Bipolar type I	2 (4.9)	4 (9.8)	0.396
Bipolar type II	1 (2.4)	1 (2.4)	1,000
<b>Anxiety Disorders</b>	22 (53.7)	30 (73.2)	0.067
Panic disorder with agoraphobia	0 (0.0)	3 (7.5)	0.074
Panic disorder without agoraphobia	1 (2.4)	1 (2.5)	0.986
Agoraphobia	1 (2.4)	6 (15.0)	<b>0.044</b>
Social phobia	8 (19.5)	18 (45)	<b>0.014</b>
Specific phobia	14 (34.1)	15 (37.5)	0.753
Posttraumatic stress disorder	3 (7.3)	4 (10.0)	0.667
Generalized anxiety disorder	8 (19.5)	20 (50.0)	<b>0.004</b>
<b>Somatiform disorders*</b>	8 (19.5)	13 (31.7)	0.206
Somatization	0 (0.0)	6 (15.0)	<b>0.010</b>
Chronic pain disorder	2 (4.9)	3 (7.5)	0.624
Hypochondria	0 (0.0)	3 (7.5)	0.074
Conversion disorder	1 (2.4)	1 (2.5)	0.986
<b>Eating disorders**</b>	4 (9.8)	4 (9.8)	1,000
<b>Impulse control disorders***</b>	10 (24.4)	7 (17.0)	0.332

†Pearson's chi-square test.

\*Includes body dysmorphic disorder, hypochondria, chronic pain disorder, conversion disorder and somatization, although body dysmorphic disorder results were shown under obsessive-compulsive spectrum disorders.

\*\*Includes anorexia, bulimia, binge eating and eating disorders not otherwise specified, although only binge eating was present in the sample.

\*\*\*Includes intermittent explosive disorder (6 cases), trichotillomania (1 case), compulsive buying (5 cases), impulsive sexual behavior (1 case), and compulsive internet use (4 cases). There were no cases of kleptomania, pathological gambling or pyromania.

In the dropout group, there were six patients with a comorbid diagnosis of agoraphobia (two abandoned group CBT, and four terminated SSRI treatment), eighteen with social phobia (seven abandoned group CBT, and eleven terminated SSRI treatment), twenty with GAD (seven abandoned group CBT, and thirteen terminated SSRI treatment), and six with somatization disorder (one abandoned group CBT, and five terminated SSRI treatment). The mean BDI scores were 18.86 (SD=13.74) and 22.75 (SD=11.24) in the group CBT and SSRI dropouts, respectively, whereas the mean BAI scores were 19.86 (SD=15.11) and 21.08 (SD=9.02) in the group CBT and SSRI dropouts, respectively.

Many patients presented with multiple comorbidities. Five patients who abandoned group CBT and twelve who abandoned SSRI treatment had at least two comorbid psychiatric disorders that were associated with noncompliance.

**Logistic regression model with interaction between variables**

The coefficients that were adjusted according to the logistic regression model are shown in Table III. The p

**Table III - Logistic regression model with interaction between variables<sup>a</sup>.**

	coefficient	Standard error	p-value
Intercept <sup>b</sup>	-13.320	6.350	0.0359*
Group CBT	-78.427	39.637	0.0479*
Male gender	11.439	6.537	0.0801**
BDI	0.018	0.053	0.7346
BAI	1.257	0.572	0.0279*
BABS	-2.773	1.261	0.0279*
Agoraphobia	81.540	6,254.101	0.9896
GAD	10.193	6.899	0.1395
Group CBT:Male	10.781	6.084	0.0764**
Group CBT:BDI	-2.344	1.111	0.0349*
Group CBT:BAI	3.148	1.504	0.0364*
Group CBT:BABS	8.106	4.038	0.0447*
Group CBT:GAD	63.596	31.004	0.0402*
Male:BAI	-1.233	0.582	0.0339*
Male:BABS	2.822	1.249	0.0238*
Male:GAD	8.131	3.697	0.0278*
BAI:GAD	-1.222	0.583	0.0360*
BABS:Agoraphobia	-8.935	803.827	0.9911
BABS:GAD	3.014	1.283	0.0188*

<sup>a</sup>Dropping out was the response variable.

<sup>b</sup>Intercept represents the reference individual (female gender, allocated to pharmacological treatment, no diagnosis of generalized anxiety disorder or agoraphobia and scores of 0 on the BAI, BDI and BABS).

\*Statistically significant (p value < 0.05)

\*\*Trend toward significance (p value < 0.10)

CBT: cognitive behavioral therapy; GAD: generalized anxiety disorder; BDI: Beck Depression Inventory (score); BAI: Beck Anxiety Inventory (score); BABS: Brown Assessment of Beliefs Scale (score).

value corresponds to the hypothesis testing  $H_0: \beta_i = 0$ . In other words, the hypothesis was that the *i*th variable does not modify the chance that a specific patient abandoned treatment. A p value < 0.05 was required to reject this hypothesis and indicate that a given variable modified the chance of treatment discontinuation by a specific patient. Positive and negative coefficients indicate that the corresponding variable increases or decreases the chance of treatment discontinuation, respectively, compared with the chance that the reference individual will do the same. The intercept represents the reference individual, which was a female who was allocated to pharmacological treatment, had no diagnosis of GAD or agoraphobia and had scores of 0 on the BAI, BDI and BABS.

The results shown in Table III should be interpreted with caution because of the large number of interactions between variables. To clarify the impact that the values for each variable and the scores have on the probability of treatment discontinuation, an interactive model is available at the following site:

<http://protoc.incubadora.fapesp.br/portal/art/spreadsheet.xls>

To determine whether the model resulting from the logistic regression was suited to predict the chance of discontinuation, a cutoff point (0.4272) for the adjusted probabilities was chosen so that the adjusted proportion of dropouts in the model was the same as that presented in the sample. If this cutoff point distinguishes between groups with significantly different frequencies of treatment discontinuation, the model would be considered appropriate. Of the 76 patients in the final sample, 66 (86.8%) were classified correctly using the adopted cutoff point. Patients for whom the index was above the cutoff point had a much

higher chance of abandoning treatment than those for whom the index was below the cutoff point.

To illustrate the interactions occurring in this model, we calculated the dropout probabilities for several hypothetical situations:

A woman with a current diagnosis of agoraphobia and scoring near zero on the BAI, BDI, and BABS would have a low probability of abandoning CBT (near 0%) and a high probability of abandoning pharmacological treatment (near 100%).

A man with a BDI score of 55 and a BAI score of 40 would have a much higher chance of abandoning pharmacological treatment (50%) than abandoning CBT (near 0%). If his insight was low (BABS=12), however, the situation would be reversed: the probability of abandoning the pharmacological treatment (65%) would be lower than abandoning CBT (near 100%).

A woman with GAD and low insight (BABS=10) would have a greater probability of abandoning CBT (near 100%) than pharmacological treatment (33%).

A man with significant depressive symptoms (BDI=30) and low insight (BABS=20) would rather abandon CBT (near 100%) than pharmacological treatment (42%).

## DISCUSSION

### Main findings

The major finding of the present study was that anxiety disorders and somatization were associated with treatment discontinuation in OCD patients. Many patients presented with multiple comorbidities, which made it difficult to distinguish the individual impacts of a given comorbidity on noncompliance. Building a logistic regression model inclusive of interactions made it clear that complex interactions occurred between variables. Treatment type (pharmacological or psychotherapeutic) interacted with other variables to produce different probabilities of treatment discontinuation.

Very few trials have investigated the clinical correlates of treatment discontinuation in OCD patients, and no trial has specifically addressed the impact of comorbidities on completion rates. Therefore, we discussed our findings in the light of psychiatric disorders other than OCD. The relationship between the presence of anxiety disorders and adherence to treatment has been previously addressed<sup>20</sup>. Among anxious patients, social phobia has been implicated in treatment discontinuation. This observation led to the development of distance therapeutic techniques,<sup>21</sup> which have also been developed for OCD treatment.<sup>22-23</sup> In Food and Drug Administration trials<sup>6</sup>, GAD patients primarily abandoned treatment due to side effects rather than factors such as lack of treatment efficacy. This finding agreed with our results that GAD patients primarily abandoned treatment when allocated to pharmacological intervention. Interestingly, SSRIs (e.g., fluoxetine) can cause an initial worsening of anxiety symptoms during the initial phase of treatment, which might explain the lack of treatment compliance. We also observed that increasing the frequency of consultations in the initial phase of the pharmacological arm decreased the discontinuation rate. Therefore, reducing

the time interval between initial consultations might have a positive influence on treatment compliance in highly anxious patients. Because there was a higher completion rate in the psychotherapeutic arm, it is also reasonable to hypothesize that highly anxious patients are better treated through early referrals for psychotherapy.

The present study indicates that noncompliance is an important issue in OCD treatment in our clinical setting; however, there are methods (e.g., psychotherapy and frequent consultations at the beginning of pharmacotherapy) to minimize compliance issues. Nevertheless, studies with different populations are needed to determine whether dropout rates are as high and as susceptible to pragmatic measures as they were in our setting.

Somatization disorder has been shown to be a common and chronic disorder associated with GAD, panic disorder, and agoraphobia<sup>24-25</sup>. Somatization disorder has also been associated with premature antidepressant treatment discontinuation in patients with functional gastrointestinal disorders or depression<sup>26-27</sup>. Like GAD, somatization disorder seems to increase the dropout rate associated with intolerable side effects<sup>27</sup>. In our sample, somatization disorder rarely appeared without the presence of an anxiety disorder. Therefore, we were unable to calculate the impact of somatization disorder on dropout rates independent of the diagnosis of a comorbid anxiety disorder. In addition, the frequency of treatment discontinuation due to side effects was low in our sample, which was in agreement with the findings of a previous study<sup>28</sup>. In addition to affecting noncompliance associated with anxiety disorders, somatization disorder may act as a marker of anxiety chronicity and severity. These speculations need to be tested in future studies.

We failed to replicate the previous findings from Mataix-cols et al.<sup>7</sup> regarding the association between hoarding symptoms and poor treatment compliance. In the test case,<sup>5</sup> hoarding was not associated with poor treatment response.

The present study had several limitations. Although there was an attempt to make our sample similar to a sample from a non-research environment, patients were sequentially allocated to the initial treatment (with an SSRI or group CBT) rather than choosing their initial treatment. This difference might have negatively affected the compliance rate. In future practical studies, other study designs should be considered to reduce treatment discontinuation as a consequence of dissatisfaction with the allocated intervention<sup>29</sup>. In addition, there was a subgroup of premature dropouts (i.e., patients who abandoned treatment before clinical evaluation) who were not represented in our sample. Furthermore, the small sample size made it difficult to draw any conclusions from the psychiatric comorbidities that were infrequent in our sample, such as eating disorders, bipolar mood disorder, and impulse control disorders. Results regarding group CBT should also be considered with caution because the dropout group only consisted of sixteen patients, and findings from the regression analysis were not evident in models that did not account for the interactions between variables.

## CONCLUSION

In conclusion, our results demonstrate that psychiatric comorbidity among OCD, other anxiety disorders, and somatization disorder are associated with dropout before

the completion of twelve weeks of treatment. Therefore, future studies assessing measures to reduce treatment discontinuation among patients with anxiety disorders are needed to increase OCD treatment effectiveness.

In addition, our data suggest that treatment compliance and effectiveness in OCD can be optimized if the assigned treatment modality is tailored according to specific psychopathologic features. Furthermore, future studies should investigate additional strategies for treating OCD patients with comorbid conditions.

## ACKNOWLEDGMENTS

This study received financial support in the form of grants provided by the following Brazilian governmental agencies: the Conselho Nacional de Desenvolvimento Científico e Tecnológico (CNPq, National Council for Scientific and Technological Development, Grant number: 0742/07, 521369/96-7 and 475919/2006-8) and the Fundação de Amparo à Pesquisa do Estado de São Paulo (FAPESP, Foundation for the Support of Research in the State of São Paulo, Grant number: 2005/55628-08 and 06/50273-0).

**Disclosure of Conflicts of Interest:** The first author is the principal investigator of an ongoing investigator initiative trial partially funded by Novartis. None of the other authors received any financial support from the pharmaceutical industry in the past 12 months.

## REFERENCES

- Foa EB, Liebowitz MR, Kozak MJ, Davies S, Campeas R, Franklin ME, et al. Randomized, placebo-controlled trial of exposure and ritual prevention, clomipramine, and their combination in the treatment of obsessive-compulsive disorder. *Am J Psychiatry*. 2005;162:151-61.
- Kastrup MC, Ramos AB. Global mental health. *Dan Med Bull* 2007;54:42-3.
- Ferrão YA, Diniz JB, Lopes AC, Shavitt RG, Greenberg B, Miguel E. Resistance and refractoriness in obsessive-compulsive disorder. *Rev Bras Psiquiatr*. 2007;29:66-76.
- Khan A, Schwartz K, Redding N, Kolts RL, Brown WA. Psychiatric diagnosis and clinical trial completion rates: Analysis of the FDA SBA reports. *Neuropsychopharmacology*. 2007;32:2422-30, doi: 10.1038/sj.npp.1301361.
- Belotto-Silva C, Diniz JB, Malavazzi DM, Valério C, Fossaluzza V, Borcato S, et al. Group cognitive behavioral therapy *versus* selective serotonin reuptake inhibitors for obsessive-compulsive disorder: A practical clinical trial. *CNS Spectrums*. In press.
- Van Oppen P, van Balkom AJ, de Haan E, van Dyck R. Cognitive therapy and exposure in vivo alone and in combination with fluvoxamine in obsessive-compulsive disorder: A 5-year follow-up. *J Clin Psychiatry*. 2005;66:1415-22, doi: 10.4088/JCP.v66n1111.
- Mataix-Cols D, Marks IM, Greist JH, Kobak KA, Baer L. Obsessive-compulsive symptom dimensions as predictors of compliance with and response to behaviour therapy: Results from a controlled trial. *Psychother Psychosom*. 2002;71:255-62, doi: 10.1159/000064812.
- Ogrodniczuk JS, Joyce AS, Lynd LD, Piper WE, Steinberg PJ, Richardson K. Predictors of premature termination of day treatment for personality disorder. *Psychother Psychosom*. 2008;77:365-71, doi: 10.1159/000151390.
- Hansen AM, Hoogduin CA, Schaap C, de Haan E. Do drop-outs differ from successfully treated obsessive-compulsives? *Behav Res Ther*. 1992;30:547-50, doi: 10.1016/0005-7967(92)90040-N.
- Fossaluzza V, Diniz JB, Pereira B, Miguel EC, Pereira CA. Sequential allocation to balance prognostic factors in a psychiatric clinical trial. *Clinics*. 2009;64:511-8, doi: 10.1590/S1807-59322009000600005.
- Stuart J, Pocock ST, Assmann SE, Enos LE, Kasten LE. Subgroup analysis, covariate adjustment and baseline comparisons in clinical trial reporting: Current practice and problems. *Stat Med*. 2002;21:2917-30, doi: 10.1002/sim.1296.
- Cordioli AV, Heldt E, Braga D, Margis R, Sousa MB, Tonello JF, et al. Cognitive-behavioral group therapy in obsessive-compulsive disorder: A randomized clinical trial. *Psychother Psychosom*. 2003;72:211-6, doi: 10.1159/000070785.
- First MB, Spitzer RL, Gibbon M, Williams JBW. Structured Clinical Interview for DSM-IV Axis I Disorders-Patient Edition (Version 2.0). Biometric Research Department, New York NY, New York State Psychiatric Institute; 1995.
- Goodman WK, Price LH, Rasmussen SA, Mazure C, Fleischmann RL, Hill CL, et al. The Yale-Brown Obsessive Compulsive Scale. I. Development, use, and reliability. *Arch Gen Psychiatry*. 1989;46:1006-11.
- Rosario-Campos MC, Miguel EC, Quatrano S, Chacon P, Ferrao Y, Findley D, et al. The Dimensional Yale-Brown Obsessive-Compulsive Scale (DY-BOCS): An instrument for assessing obsessive-compulsive symptom dimensions. *Mol Psychiatry*. 2006;11:495-504, doi: 10.1038/sj.mp.4001798.
- Eisen JL, Phillips KA, Baer L, Beer DA, Atala KD, Rasmussen SA. The Brown Assessment of Beliefs Scale: Reliability and validity. *Am J Psychiatry*. 1998;155:102-8.
- Gorenstein C, Andrade L. Validation of a Portuguese version of the Beck Depression Inventory and the State-Trait Anxiety Inventory in Brazilian subjects. *Braz J Med Biol Res*. 1996;29:453-7.
- Gorenstein C, Andrade L, Vieira Filho AH, Tung TC, Artes R. Psychometric properties of the Portuguese version of the Beck Depression Inventory on Brazilian college students. *J Clin Psychol*. 1999;55:553-62, doi: 10.1002/(SICI)1097-4679(199905)55:5<553::AID-JCLP3>3.0.CO;2-D.
- Gorenstein C, Moreno RA, Bernik MA, Carvalho SC, Nicastrí S, Cordas T, et al. Validation of the Portuguese version of the Social Adjustment Scale on Brazilian samples. *J Affect Disord*. 2002;69:167-75, doi: 10.1016/S0165-0327(01)00300-7.
- Bienvenu OJ, Nestadt G, Samuels JF, Costa PT, Howard WT, Eaton WW. Phobic, panic, and major depressive disorders and the five-factor model of personality. *J Nerv Ment Dis*. 2001;189:154-61, doi: 10.1097/00005053-200103000-00003.
- Carlbring P, Gunnarsdóttir M, Hedensjö L, Andersson G, Ekselius L, Furmark T. Treatment of social phobia: randomised trial of internet-delivered cognitive-behavioural therapy with telephone support. *Br J Psychiatry*. 2007;190:123-8.
- Taylor S, Thordarson DS, Spring T, Yeh AH, Corcoran KM, Eugster K, et al. Telephone-administered cognitive behavior therapy for obsessive-compulsive disorder. *Cogn Behav Ther*. 2003;32:13-25, doi: 10.1080/16506070310003639.
- Tumur I, Kaltenthaler E, Ferriter M, Beverley C, Parry G. Computerised cognitive behaviour therapy for obsessive-compulsive disorder: a systematic review. *Psychother Psychosom*. 2007;76:196-202.
- Rubio G, López-Ibor JJ. Generalized anxiety disorder: a 40-year follow-up study. *Acta Psychiatr Scand*. 2007;115:372-9, doi: 10.1111/j.1600-0447.2006.00896.x.
- Rubio G, López-Ibor JJ. What can be learnt from the natural history of anxiety disorders? *Eur Psychiatry*. 2007;22:80-6, doi: 10.1016/j.eurpsy.2006.09.007.
- Sayuk GS, Elwing JE, Lustman PJ, Clouse RE. Predictors of premature antidepressant discontinuation in functional gastrointestinal disorders. *Psychosom Med*. 2007;69:173-81, doi: 10.1097/PSY.0b013e318031391d.
- Agosti V, Quitkin FM, Stewart JW, McGrath PJ. Somatization as a predictor of medication discontinuation due to adverse events. *Int Clin Psychopharmacol*. 2002;17:311-4, doi: 10.1097/00004850-200211000-00007.
- Bernstein GA, Anderson LK, Hektner JM, Realmuto GM. Imipramine compliance in adolescents. *J Am Acad Child Adolesc Psychiatry*. 2000;39:284-91, doi: 10.1097/00004583-200003000-00009.
- Homer CSE. Using the Zelen design in randomized controlled trials: debates and controversies. *J Adv Nurs*. 2002;38:200-7, doi: 10.1046/j.1365-2648.2002.02164.x.