

# Metabolism and Brain Cancer

Suely Kazue Nagahashi Marie, Sueli Mieko Oba Shinjo

Department of Neurology - School of Medicine, University of Sao Paulo, Brazil.

Cellular energy metabolism is one of the main processes affected during the transition from normal to cancer cells, and it is a crucial determinant of cell proliferation or cell death. As a support for rapid proliferation, cancer cells choose to use glycolysis even in the presence of oxygen (Warburg effect) to fuel macromolecules for the synthesis of nucleotides, fatty acids, and amino acids for the accelerated mitosis, rather than fuel the tricarboxylic acid cycle and oxidative phosphorylation. Mitochondria biogenesis is also reprogrammed in cancer cells, and the destiny of those cells is determined by the balance between energy and macromolecule supplies, and the efficiency of buffering of the cumulative radical oxygen species. In glioblastoma, the most frequent and malignant adult brain tumor, a metabolic shift toward aerobic glycolysis is observed, with regulation by well known genes as integrants of oncogenic pathways such as phosphoinositide 3-kinase/protein kinase, MYC, and hypoxia regulated gene as hypoxia induced factor 1. The expression profile of a set of genes coding for glycolysis and the tricarboxylic acid cycle in glioblastoma cases confirms this metabolic switch. An understanding of how the main metabolic pathways are modified by cancer cells and the interactions between oncogenes and tumor suppressor genes with these pathways may enlighten new strategies in cancer therapy. In the present review, the main metabolic pathways are compared in normal and cancer cells, and key regulations by the main oncogenes and tumor suppressor genes are discussed. Potential therapeutic targets of the cancer energetic metabolism are enumerated, highlighting the astrocytomas, the most common brain cancer.

**KEYWORDS:** Cancer metabolism; Warburg effect; Glioblastoma; Cancer therapy.

Marie SKN, Oba-Shinjo SM. Metabolism and Brain Cancer. Clinics. 2011;66(51):33-43.

Received for publication on March 8, 2011; Accepted for publication on March 10, 2011

E-mail: sknmarie@usp.br

Tel.: 55 11 3061-7458

The incidence of primary brain tumors is estimated at 7.2–12.5 per 100 million persons per year, representing around 2% of all adult primary tumors and 23% of cancer in childhood. Mortality resulting from primary brain tumor amounts to 13,000 deaths per year, which is 2% of adult and 26% of childhood cancer deaths.<sup>1–4</sup> Astrocytoma, a brain tumor originating in glial cell types, is the most frequent brain tumor, and glioblastoma (GBM), the grade IV astrocytoma, is the most malignant and frequent of these.<sup>5</sup> In spite of the introduction of new molecular-based therapies, this mortality has not changed much during the last three decades.<sup>6–9</sup> The survival outcome for GBM patients has improved from 3 months following surgical resection only to 8 months with the introduction of radiotherapy<sup>10</sup> and to 6.9 months of median progression-free survival and median overall survival of 14.6 months with the further addition of temozolomide concurrently with irradiation.<sup>11</sup> Diffuse infiltration of tumor cells into normal brain tissue presents difficulties in surgical resection and partially explains the poor outcome. Furthermore, the diverse causative genotypes leading to a heterogeneous histological phenotype are additional characteristics of this tumor offering obstacles to effective therapy. Recent studies demonstrating the presence of multiple mutations in brain tumors, specifically in GBM<sup>12</sup> and medulloblastoma,<sup>13</sup> corroborate the hypothesis that the

development of a brain tumor also requires the acquisition of several mutations, as described previously for colorectal carcinoma.<sup>14</sup> At the same time, the Cancer Genome Atlas Research Network performed a large-scale multi-dimensional analysis of the molecular characteristics of GBM and provided a network view of the pathways altered in the development of GBM.<sup>15</sup> Nonetheless, cumulative evidence shows that mutations are not the only cause of the altered gene expression of cancer cells, and that epigenetic alterations,<sup>16,17</sup> heritable and reversible changes other than the DNA sequences,<sup>18</sup> and aneuploidy, numerical and structural abnormalities in chromosomes,<sup>19</sup> are common alterations in tumor cells and may also modify gene expression and play a crucial role in tumorigenesis. Epigenetic modulation of gene expression is essential for normal cellular development, and promoter CpG island hypermethylation and transcriptional silencing of tumor suppressor genes and pro-differentiation factors are hallmarks of epigenetic alteration in cancer cells. For example, methylation of the O-6-methylguanine-DNA methyltransferase promoter in GBM has been shown to be a useful predictor of the responsiveness of the tumors to alkylating agents.<sup>20–22</sup> In addition, cellular energy metabolism is one of the main processes affected during the transition from normal to cancer cells. Metabolic activity is a relevant determinant of a cell decision to proliferate or die. Cancer cells alter their metabolism in order to support rapid proliferation. Otto Warburg, Nobel Prize laureate for Physiology Medicine in 1931, demonstrated that cancer cells do not metabolize glucose in the same way as normal adult differentiated cells. Cancer cells generally use glycolysis even in the presence of abundant oxygen, a phenomenon named

aerobic glycolysis, the Warburg effect,<sup>23,24</sup> rather than fuel the tricarboxylic acid (TCA) cycle. It is currently believed that the glycolytic switch is acquired very early in tumorigenesis even before tumors experience hypoxia.<sup>25</sup>

In the present review, the main metabolic pathways in normal adult cells are described first, then the modifications that occur in cancer cells are presented highlighting the potential therapeutic targets, and finally, the interactions between oncogenes and tumor suppressor genes with metabolic pathways are discussed.

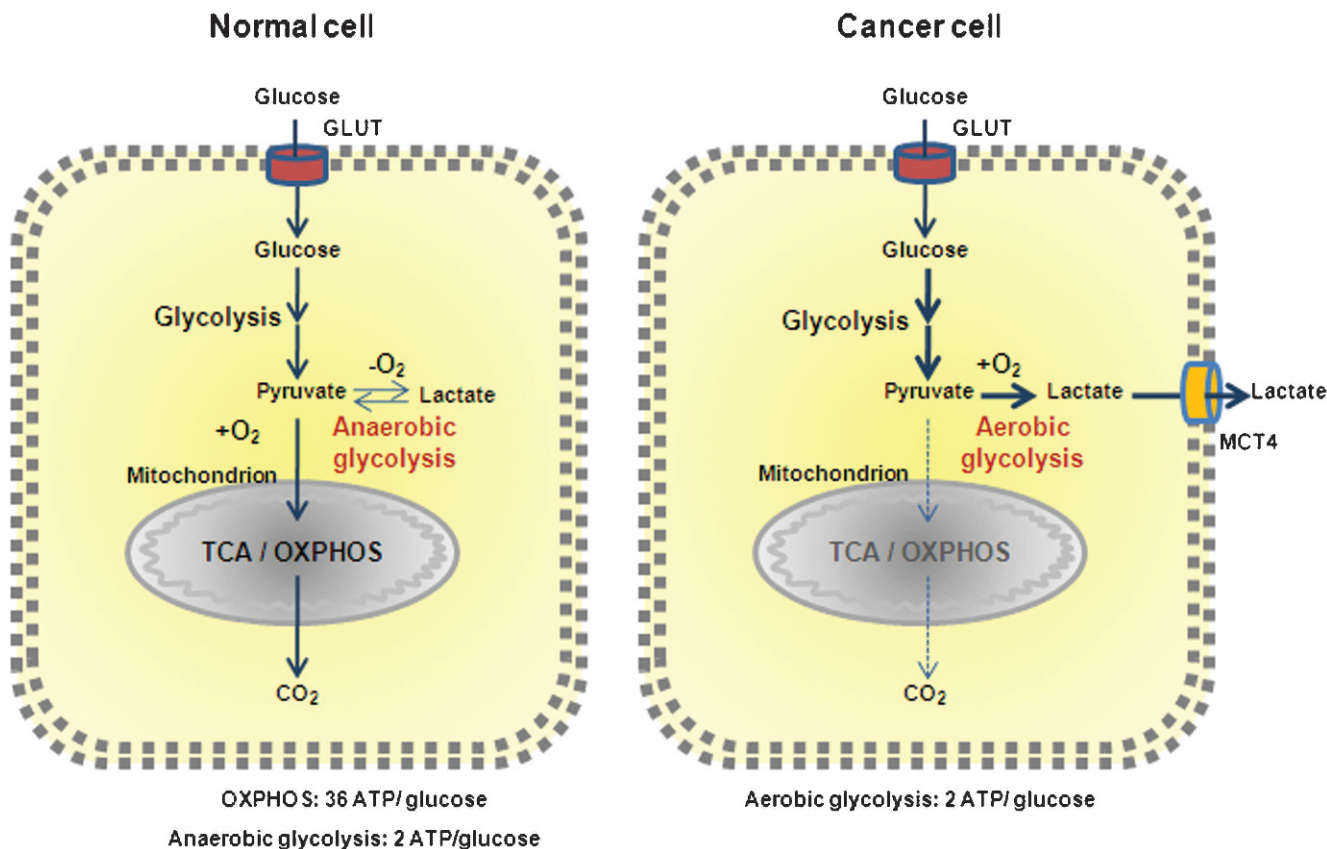
**Metabolism in normal cells**

In normal cells, to produce two viable daughter cells at mitosis, all the cellular contents must be replicated, and energy is necessary for this to happen. Glucose participates in cellular energy production with two adenosine triphosphate (ATP) synthesis through glycolysis and up to 36 ATPs through its complete catabolism by the TCA cycle and OXPHOS (oxidative phosphorylation) (Figure 1). The large requirements for nucleotides, amino acids, and lipids for the daughter cells are provided by intermediate metabolites of these pathways. In addition to glucose, glutamine is the other molecule catabolized in appreciable quantities for most mammalian cells in culture. Both molecules supply carbon, nitrogen, free energy, and reducing equivalents necessary to support cell growth and division. This means

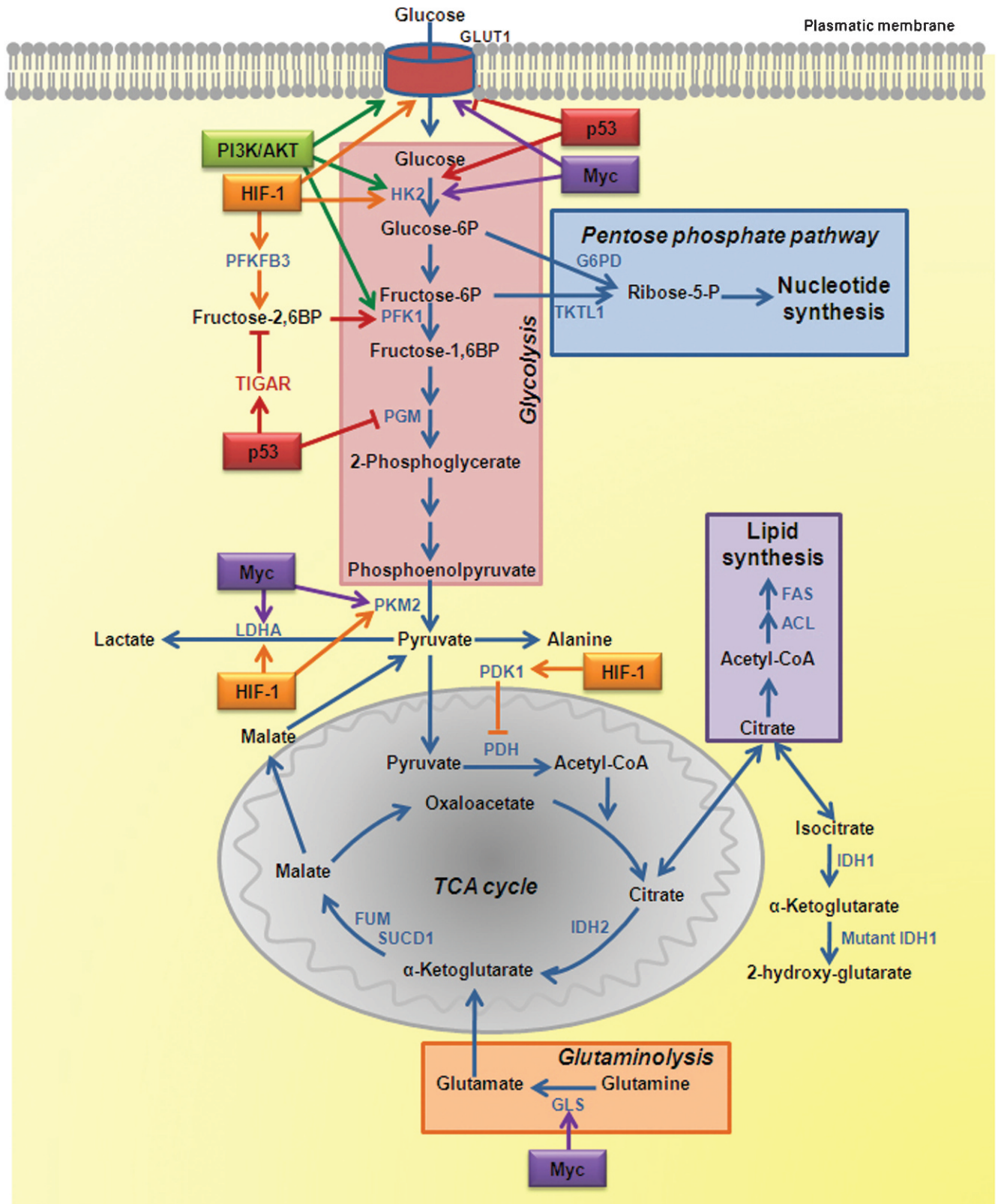
that glucose, in addition to being used for ATP synthesis, should also be diverted to macromolecular precursors such as acetyl-CoA for fatty acids, glycolytic intermediates for non-essential amino acids, and ribose for nucleotides to generate biomass.

**Glycolytic pathway.** Glucose enters the cell through glucose transporters (GLUTs) and, once intracellular, is phosphorylated to glucose-6-phosphate (G6P) by hexokinase 2 (HK2). Phosphoglucose isomerase catalyzes G6P to fructose-6-phosphate (F6P), which yields fructose-1,6-biphosphate by phosphofructokinase 1 (PFK1), and then pyruvate and ATP by pyruvate kinase (PK) in the final step of glycolysis. Pyruvate is converted to acetyl-CoA, which enters the TCA cycle. Ultimately, glycolysis produces two ATP molecules and six NADH molecules per glucose. In normal tissues, most of the pyruvate is directed into the mitochondrion to be converted into acetyl-CoA by the action of pyruvate dehydrogenase (PDH) or transaminated to form alanine (Figure 2).

**Pentose phosphate pathway (PPP).** This is a metabolic pathway that generates NADP and pentose sugars from G6P. The enzyme that governs the entry of G6P into this pathway is glucose-6-phosphate dehydrogenase (G6PD), which is regulated by the availability of its substrate and the NADPH to NADP<sup>+</sup> ratio.<sup>26</sup> G6P is converted to ribose-5-phosphate (R5P) while producing two molecules of



**Figure 1 - Metabolic differences between normal and cancer cells.** Normal cells primarily metabolize glucose to pyruvate for growth and survival, followed by complete oxidation of pyruvate to CO<sub>2</sub> through the TCA cycle and the OXPHOS process in the mitochondria, generating 36 ATPs per glucose. O<sub>2</sub> is essential once it is required as the final acceptor of electrons. When O<sub>2</sub> is limited, pyruvate is metabolized to lactate. Cancer cells convert most glucose to lactate regardless of the availability of O<sub>2</sub> (the Warburg effect), diverting glucose metabolites from energy production to anabolic process to accelerate cell proliferation, at the expense of generating only two ATPs per glucose.



**Figure 2** - Metabolic remodeling in cancer cells and regulation by signaling pathways involving oncogenes and tumor suppressor genes. The key enzymes of glycolysis, the TCA cycle, the pentose phosphate pathway, glutaminolysis, nucleotide, and lipid biosynthesis are shown as the regulation points by oncogenes and tumor suppressor genes.



NADPH. NADPH is both a major cellular antioxidant, maintaining glutathione in a reduced state to prevent oxidative damage, and a required cofactor in the reductive biosynthesis of fatty acids, nucleotides, and amino acids. NADH is also used in mitochondrial OXPHOS (Figure 2).

**Tricarboxylic acid (TCA) cycle.** Pyruvate produced by glycolysis is converted to acetyl-CoA, which enters the TCA cycle, and citrate,  $\alpha$ -ketoglutarate, succinyl-CoA, fumarate, malate, and oxaloacetate are produced as intermediate products. Most of the carbon for fatty acids derives from acetyl-CoA synthesized in the mitochondrial matrix. However, acetyl-CoA cannot cross the inner mitochondrial membrane, but intramitochondrial acetyl-CoA and oxaloacetate combine to form citrate, which is transported out of the mitochondria and broken back down into its constituents by ATP citrate lyase (ACL). Acetyl-CoA is converted to malonyl-CoA by acetyl-CoA carboxylase, and acetyl-CoA and malonyl-CoA are then both used by the multi-subunit enzyme fatty acid synthase (FAS) for the synthesis and elongation of fatty acid chains. Oxaloacetate is used for the synthesis of non-essential amino acids. Cytosolic and nuclear acetyl-CoA is also a precursor for the post-translational modification of proteins (for example, histones) by acetylation. Similarly to citrate, malate produced in the TCA cycle leaves the mitochondria, and it is converted to pyruvate plus NADPH. Citrate might also be converted to isocitrate and then to  $\alpha$ -ketoglutarate, generating another molecule of NADPH by the action of isocitrate dehydrogenase 1 (IDH1). In addition to glucose, amino acids can also fuel the TCA cycle. Glutamine supplies carbon in the form of mitochondrial oxaloacetate to maintain citrate production in the first step of the TCA cycle (Figure 2).

**Glutaminolysis.** Glutamine contributes both to the substrate needs of a dividing cell and to the control of redox potentials through the synthesis of NADH. After glutamine is taken into the cell, a mitochondrial-associated enzyme, glutaminase-1 (GLS), converts it to glutamate. Glutamate is converted to  $\alpha$ -ketoglutarate and enters the TCA cycle in the mitochondria (Figure 2). Glutamate can also be converted to aspartate, which contributes to nucleotide synthesis. The excessive quantity of glutamine used by the cells results in alanine and ammonium secretions.

### Metabolic modifications in cancer cells and potential targets for therapy

Cancer cells adapt themselves to maximize their ability to synthesize substrates for membranes, nucleic acids, and proteins for the increased proliferative rate, a major characteristic of these cells. This cannot be accomplished without large amounts of energy (ATP), which are obtained by increasing the use of glucose and glutamine many times. The cancer cells rely on aerobic glycolysis, the Warburg effect,<sup>23,24</sup> with a reduced use of the TCA cycle, so that the pyruvate made in glycolysis is converted to lactate<sup>27</sup> (Figure 1). In fact, the fate of pyruvate depends on many factors, of which oxygen availability is one of the most important. In the presence of oxygen, the pyruvate is directed into the mitochondrion to be converted into acetyl-CoA by the action of PDH or transaminated to form alanine. And then, once inside the mitochondrion, pyruvate is completely oxidized through the TCA cycle and OXPHOS. However, in cancer cells, PDH activity is blocked by the hypoxia-driven

enzyme pyruvate dehydrogenase kinase 1 (PDK1).<sup>28,29</sup> In addition, an increase in lactate dehydrogenase A (LDHA) enzymatic activity is observed in cancer cells (Figure 2).<sup>30,31</sup> These two facts determine the fate of pyruvate, which is converted into lactate, contributing to the Warburg effect and to the enhancement of the malignant phenotype.<sup>32,33</sup> Animal experiments knocking down LDHA or inhibiting PDK1, using interference RNA or dichloroacetate, have demonstrated a reduction in tumor growth in xenograft models.<sup>30,31,34</sup> Such results corroborate the importance of the decrease in the rate of pyruvate entering the TCA cycle and the concurrent increase in lactate production for the growth and survival of tumor cells. The lactate produced is exported from the cells by monocarboxylate transporter 4 (MCT4), which allows the cell to preserve normal cellular pH (Figure 1). Oxygenated normal cells can remove lactate from the extracellular fluid using monocarboxylate transporter 1, and convert it back to pyruvate for further oxidation, using the lactate dehydrogenase B (LDHB) isoform. However, the same is not observed in hypoxic cancer cells, and the large amounts of exported lactate create an acidic tumor environment, which encourages cancer cell invasion. Thus, therapies targeting tumor acidification would inhibit glycolytic energy production and may also inhibit tumor cell invasion.<sup>35</sup> Nevertheless, treatment regimens directed toward such ubiquitous transporters, such as monocarboxylate transporters, are also likely to affect normal tissues. Therefore, either their action must be extremely rapid or the dose very low to avoid side-effects in other tissues.

The pyruvate synthesis itself by PK is also an important energy-producing step in glycolysis. This step is highly regulated by isoform selection and by allosteric regulation. Four PK isoforms have been described in humans: PKM1, PKM2, PKL, and PKR. The PKM1 isoform is expressed only in normal tissues and is incompatible with tumor growth. This isoform is replaced by the alternative spliced form PKM2 in highly proliferative tumor cells.<sup>36,37</sup> PKL is found in the liver and kidney, and PKR in erythrocytes. PKM2 oscillates between inactive dimeric and active tetrameric forms. The formation of PKM2 tetramers is stimulated by the glycolytic intermediate fructose-1,6-biphosphate.<sup>38</sup> The dimeric form of PKM2 retards pyruvate formation and allows the accumulation of upstream glycolytic intermediates, promoting their distribution into the biosynthetic pathways. The tetrameric form of PKM2 channels pyruvate to lactate. Phosphotyrosine residues bind to the same allosteric regulatory site of fructose-1,6-biphosphate, releasing it.<sup>39,40</sup> This regulation of enzyme activity may constitute a molecular switch that diverts glucose metabolites from energy production to anabolic processes when cells are stimulated by certain tyrosine phosphorylated growth factors. If an inhibitor could be designed for the tumor-expressed PKM2 isoform, it might specifically inhibit glycolysis in tumor cells, killing them by energy deficit. A therapeutic strategy inhibiting the interaction between phosphotyrosine residues and PKM2 to block the anabolic process of tumor cells would also be an interesting avenue to explore.

PFK1 is also a rate-limiting enzyme in glycolysis<sup>41</sup> and highly activated in tumor cells. PFK1 adds a second phosphate group to F6P. One potent allosteric activator of PFK1 is fructose-2,6-biphosphate (F2,6BP), the product of the 6-phosphofructose-2-kinase/fructose-2,6-biphosphatase (PFKFB). PFKFBs are bifunctional enzymes that interconvert

F6P and F2,6BP. PFK1 is normally inhibited by ATP, but F2,6BP overrides this inhibition and enhances the glycolytic flux, allowing tumor cells to maintain high glycolytic flux despite the presence of physiological levels of ATP. An isoform of PFKFB, isoenzyme 3 (PFKFB3), was recently shown to promote proliferation through its effects on cell cycle regulators. PFKFB3 is upregulated in tumors, and its inhibition has been proved to decrease F2,6BP levels, which in turn decreases PFK1 activity and glycolytic flux with cytostatic effect (Figure 2).<sup>42</sup>

HK2 participates in the glycolytic pathway and also in metabolite transport into and out of the mitochondrial intermembrane space through its association with a voltage-dependent anion channel,<sup>43</sup> a 30 kDa pore protein inserted in the outer mitochondrial membrane.<sup>44</sup> Therefore, HK2 is another potential therapeutic target. In fact, two hexokinase inhibitors, lonidamine and glucose mimetic, 2-deoxyglucose, are currently in clinical trials in combination with other agents.<sup>45</sup> 3-Bromopyruvate is a further inhibitor of HK2 with promising *in vivo* studies, but there is no current clinical trial.<sup>46,47</sup>

The modifications in cancer cells enumerated above permit an understanding of how these cells are urged to a non-profitable choice of two ATP generation by aerobic glycolysis instead of 36 ATP generation upon complete glucose oxidation by the TCA cycle and OXPHOS. In spite of this apparently "bad" choice, cancer cells continue to exhibit high ratios of ATP/adenosine diphosphate (ADP) and NADH/NAD<sup>+</sup><sup>48</sup> due to an alternative ATP production by converting two ADPs to one ATP and one adenosine monophosphate (AMP) catalyzed by adenylate kinases. This not only helps to maintain a viable ATP/ADP ratio as ATP production declines, but also to accumulate AMP, which activates AMP-kinase and leads to the phosphorylation of several targets to improve energy charge in cells.<sup>49</sup>

Another important reason for the cancer cells to switch to aerobic glycolysis is to provide metabolic macromolecules for the daughter cells. <sup>13</sup>C-nuclear magnetic resonance spectroscopy measurements show that 90% of glucose and 60% of glutamine are converted into lactate or alanine by GBM cell cultures.<sup>50</sup> Although each lactate excreted from the cell wastes three carbons that might otherwise be utilized for either ATP production or macromolecular precursor biosynthesis, the tumor cells choose this method to fasten carbon incorporation into biomass to increment cell division velocity. Glutaminolysis also generates reductive power required for fatty acid biosynthesis by NADPH production via the activity of NADP<sup>+</sup>-specific malate dehydrogenase (malic enzyme), in addition to the fundamental role in replenishing the TCA cycle.<sup>51</sup> Blocking the fuel through this pathway for the biomass to tumor proliferation seems a good therapeutic strategy. Phenylacetate is a drug that reduces the biological availability of glutamine in the blood. This reagent condenses with the  $\gamma$ -amino group of glutamine and is excreted into urine. A previous report has demonstrated that phenylacetate inhibits the proliferation of glioma cells and promotes their differentiation.<sup>52</sup> However, the removal of glutamine directly from the plasma may also increase the rate at which the body cannibalizes its own muscles (cachexia). Additionally, various other anti-glutaminolysis compounds have been developed, but they were found to be toxic or raised immune reactions.<sup>53</sup>

Cancer biomass reduction may also be achieved by blocking fatty acid synthesis through the inhibition of ACL, which converts acetyl-CoA to malonyl-CoA,<sup>54</sup> and FAS, a multifunctional protein that converts malonyl-CoA to palmitate over multiple steps.<sup>55</sup> Inhibition of both enzymes, ACL and FAS, has been shown to limit tumor cell proliferation and survival *in vitro* and *in vivo*.<sup>55,56</sup> One possible negative aspect of anti-FAS therapy is its effect on food intake and body weight, as observed in treated rodents that presented hypophagia and consequent weight loss.<sup>57</sup> Deficiencies in two other enzymes participating in the TCA cycle, fumarate hydratase (FUM) and succinate dehydrogenase 1 (SUCD1), may also have a tumor suppressive effect (Figure 2).<sup>58</sup>

Nucleotide biosynthesis has also been targeted to block biomass production in cancer cells for several years. 5-fluorouracil, cytarabine, and methotrexate are examples of chemotherapeutic agents known as antimetabolites. Most of these drugs target the final stages in the nucleotide synthetic pathway, and therefore lack specificity, leading to nucleotide shortage, incomplete DNA synthesis, and cell death indistinctly of tumor and normal proliferating cells.<sup>59</sup> Therefore, blocking the early stages of nucleotide biosynthesis such as R5P production could provide a better therapeutic window than that shown by previous antimetabolic therapies. Transketolase-like protein 1 (TKTL1), an enzyme in the non-oxidative arm of the PPP that produces R5P, has been found to be upregulated in several tumor types,<sup>60</sup> and knocking it down reduced the proliferation of tumor cells, as well as decreasing lactate production and resensitizing cells to reactive oxygen species (ROS)-generating compounds.<sup>61</sup> Isolated mutations in either TKTL1 or G6PD of PPP have no impact on cancer cell growth, as both enzymes contribute to R5P production. However, simultaneous mutations in these two genes, blocking R5P synthesis, are lethal for cancer cells in animals (Figure 2).<sup>62</sup>

Besides the alterations described above in the main metabolic routes, side pathways of the TCA cycle are also implicated in cancer progression. A highly prevalent mutation in an enzyme related to metabolism was uncovered in the recent high throughput mutation screening in GBM, which highlights the importance of energetic metabolism in tumor progression. This study revealed that up to 12% of the GBMs harbor the same mutation in the gene encoding cytosolic IDH1.<sup>12,63</sup> Monoallelic mutation in the same residue 132 in IDH1 (*IDH1*<sup>R132</sup>) or the analogous residue in the related enzyme IDH2 is a common feature of gliomas, as more than 80% of indolent gliomas harbor such a mutation.<sup>64,65</sup> IDH1 and IDH2 couple the reversible conversion of isocitrate to  $\alpha$ -ketoglutarate and NADP<sup>+</sup> to NADPH. IDH1 is located in the cytosol and the peroxisome<sup>66,67</sup> and produces NADPH.<sup>68</sup> In the peroxisome, NADPH contributes to cholesterol synthesis.<sup>69</sup> IDH2 is located in the mitochondria and catalyzes the isocitrate to  $\alpha$ -ketoglutarate reaction in the TCA cycle.<sup>70</sup> The occurrence of *IDH1* mutations correlated with approximately twofold diminished NADP<sup>+</sup>-dependent IDH activity, and total NADPH production is hampered by 38% in GBM harboring the *IDH1*<sup>R132</sup> mutation. Therefore, mutated IDH1 consumes rather than produces NADPH. NADPH/NADH is both a major antioxidant, maintaining glutathione in a reduced state, protecting the cell from ROS, and a required cofactor in the biosynthesis of fatty acids, nucleotides, and amino acids. Thus, the NADPH level may affect not only cellular

proliferation but also mutation rates.<sup>71</sup> Then, the low NADPH levels due to *IDH1*<sup>R132</sup> mutation in GBM may sensitize tumors to irradiation and chemotherapy.<sup>72</sup> In contrast, *IDH1*<sup>R132</sup> mutation also leads to the accumulation of 2-hydroxyglutarate which, based on its structural similarity to  $\alpha$ -ketoglutarate, may competitively inhibit prolyl hydroxylase, which targets hypoxia induced factor 1- $\alpha$  (HIF-1 $\alpha$ ) for ubiquitylation and subsequent proteasomal degradation. Therefore, the substrate of the *IDH1*<sup>R132</sup> mutation stabilizes HIF-1 $\alpha$ , which activates metabolic changes, as described below, and stimulates invasion, cell survival, and angiogenesis (Figure 2).<sup>73, 74</sup>

An important penalty for this increased flux of macromolecules to provide biomass for the proliferating cancer cells not converted to aerobic glycolysis is also an increase in mitochondrial OXPHOS, the major source of ROS production. Elevated mitochondrial ROS formation frequently occurs upon suppression of pyruvate input into OXPHOS.<sup>75</sup> This is justified only when additional blockage exists within the electron transport chain, such as that caused by mutations or an insufficiency of mitochondria-encoded subunits, or HIF-1 and oncogene-mediated suppression of electron transport chain components. Slow electron transport at a relatively high substrate also pressures the electron transport chain with a consequent increase in ROS production. This high-level ROS generation promotes genetic instability in tumors, favors growth, chemotherapeutic escape, and evasion of senescence, all contributing to the increase in tumor malignancy. Therefore, the mitochondrion, where ROS is mainly produced, seems to play an important role in the tumorigenic phenotype.<sup>76</sup> The mitochondrial DNA (mtDNA) encodes 13 of the electron transport chain proteins, and consequently, alterations in these coding genes lead to OXPHOS malfunction and inability to synthesize ATP and to reduce oxygen, which generates ROS. In the past decade, a wide spectrum of mutations in mtDNA has been identified in human cancers,<sup>77,78</sup> including depletion of mtDNA. The lower content of copy numbers of mtDNA was associated with higher tumor malignancy among astrocytomas.<sup>79</sup> Further analysis of mitochondrial genome and mitochondria biogenesis in different tumors may offer new insights for cancer therapy.

There are several ways to lower ROS levels, with glutathione being the major molecule involved, which eliminates ROS by accepting an electron and converting to its oxidized form glutathione disulfide. The enzyme glutathione reductase uses NADPH to reduce glutathione disulfide to glutathione. Low levels of glutathione/glutathione disulfide have been demonstrated in highly proliferative glioma samples.<sup>80</sup> Thus, therapeutic targets to control ROS levels can also be exploited to selectively kill cancer cells.

Considering the current knowledge about cancer metabolism, it seems theoretically reasonable to target metabolic pathways for the control of cancer progression. However, no significant effect on tumor growth has been observed when the targets were applied as monotherapy.<sup>81,82</sup> Nevertheless, these drugs have been proved to sensitize tumors to other chemotherapeutic agents (such as paclitaxel),<sup>83</sup> presumably through reducing ATP levels. Then, new inhibitors of the glycolytic pathway have been used in combination with both chemotherapy and radiotherapy, in Phase II and III clinical trials against breast, ovarian, lung cancers,<sup>84-86</sup> and GBM<sup>45</sup>

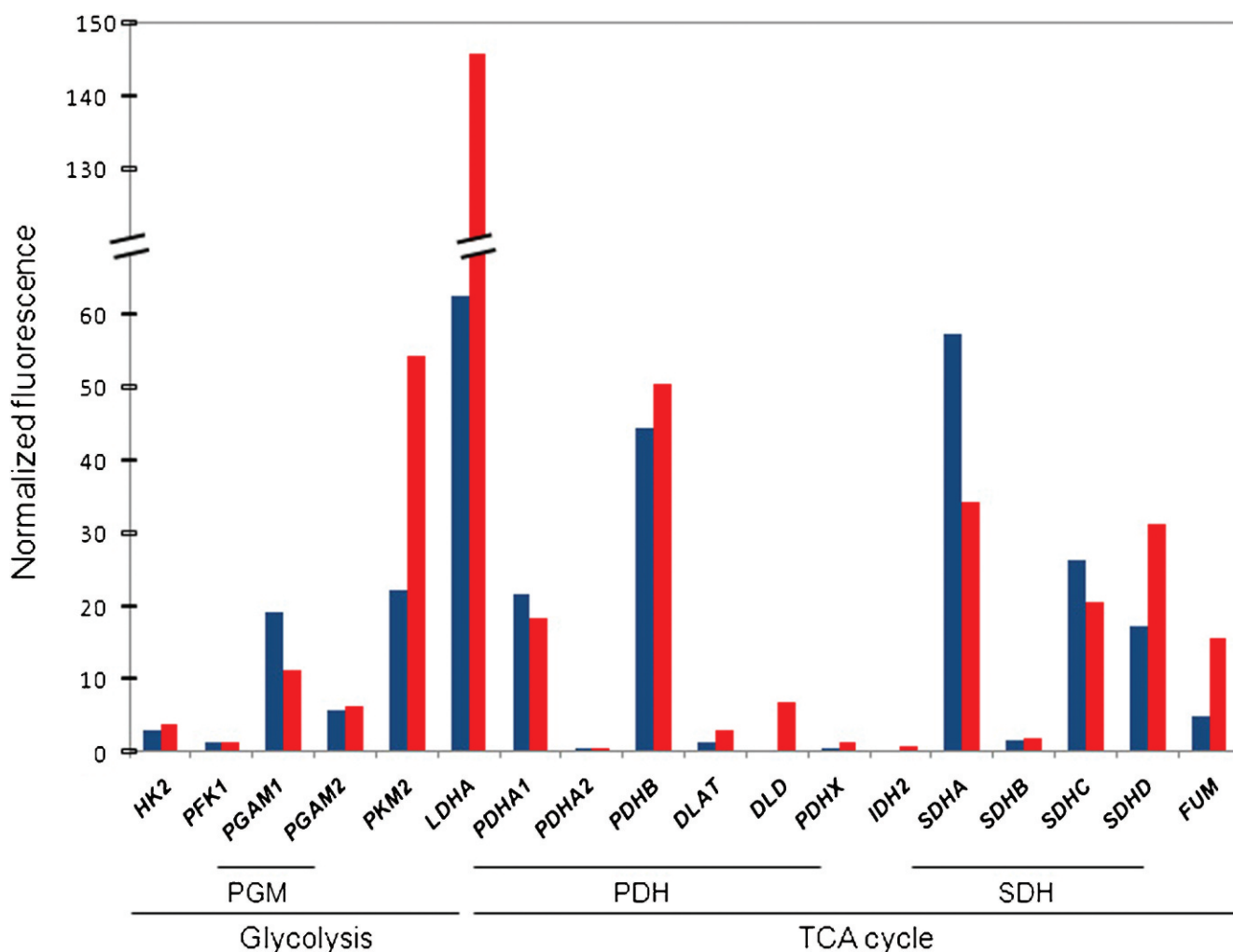
and the outcome of these trials may permit a better understanding of the metabolic impact on tumorigenesis. Specifically targeting the tumor cells and not normal proliferating cells continues to be an issue with this antimetabolic strategy for cancer control, as with most other chemotherapies. Targeting tumor-specific enzyme isoforms, suppressing the activity of an enzyme, or modifying the concentration of a substrate instead of completely abolishing it might provide a strategy to attack mainly tumor cells. Interestingly, the drugs developed to target metabolic diseases may also be applied in oncotherapy. Metformin, an oral hypoglycemic agent widely used to treat diabetes, is such an example.<sup>87,88</sup> A number of retrospective clinical studies have found that metformin may offer a possible benefit in cancer prevention as well as in outcome when used with other cancer therapies.<sup>89</sup> Similarly, an interesting premise is to bypass glycolysis through diet modification. The ketogenic diet with low carbohydrate and high fat, specifically medium-chain triglycerides, relies on the consumption of food that does not increase plasma glucose, but produces ketone bodies as a carbon source for energy production. Tumor cells depending on high glycolytic flux are not expected to survive on this alternative fuel source.<sup>90,91</sup> Although this type of diet is not likely to be applied as a monotherapy, it may well prove to be useful to reinforce other antimetabolic therapies.

Recently, it was proposed that several "waves" of gene expression reprogramming occur during carcinogenesis, starting with oncogene-mediated alterations, followed by HIF-mediated expression, resulting in increased aerobic glycolysis and suppression of mitochondrial biogenesis. Then, on account of a high proliferation rate leading to nutrient shortage, there would be a third "wave" of adaptation with enhanced glutaminolysis. A retrograde signaling from revitalized mitochondria might constitute a fourth "wave".<sup>92</sup> Most probably, these proposed waves may occur simultaneously in a heterogeneous solid tumor, where hypoxic areas coexist with oxygenated areas, leading to a distinct pool of cells with different metabolic characteristics.

In fact, the results produced by our group in a series of primary GBM corroborate this heterogeneity.<sup>93,94</sup> Concerning the metabolic profile of these GBM, the oligonucleotide microarray data have shown that all the key enzymes in the glycolytic pathway were not hyper-expressed and nor were the TCA cycle enzymes hypo-expressed. Figure 3 shows the mean normalized fluorescence of these key enzymes genes of three different samples of non-tumoral brain tissues and GBM. Concomitantly, depletion of the mitochondrial DNA with overexpression of the mitochondrial transcription factor A was observed, not following the theoretical model, confirming the complexity of mitochondrial biogenesis reprogramming.<sup>79</sup> These preliminary results confirm the complexity of metabolism regulation of a tumor composed of pools of cells in different stages of metabolic reprogramming. Therefore, most probably, a better outcome for the cancer patient may be achieved by the better dynamic combination of targeted therapies.

Moreover, these metabolic modifications should be contextualized in oncogene/tumor suppressor gene pathways already known. From the metabolic view, an oncogenic pathway will provide autonomous nutrient uptake and a proliferative metabolism program, in contrast to a suppressor pathway, which will prevent





**Figure 3** - Oligonucleotide microarray data of genes coding for key enzymes or subunits of enzymatic complexes of glycolysis and the TCA cycle. Three samples of non-tumoral brain tissues (blue bars) and three samples of GBM (red bars) were submitted to extraction of total RNA and microarray analysis, as described previously.<sup>94,146</sup> LDHA and PKM2, both enzymes of glycolysis, are upregulated in GBM, whereas the variability in the expression profile of TCA cycle genes suggests that this cycle is uncoupled. The bars represent the median values of the three samples. Numbers represent the normalized fluorescence. Genes coding for glycolysis enzymes: *HK2*, hexokinase 2; *PFK1*, phosphofructokinase; *PGAM1* and *PGAM2*, phosphoglycerate mutase 1 and 2, subunits of PGM dimer; *PKM2*, pyruvate kinase M2; *LDHA*, lactate dehydrogenase A. Genes coding for the TCA cycle enzymes: *PDHA1* and *PDHA2*, pyruvate dehydrogenase alpha 1 and 2; *PDHB*, pyruvate dehydrogenase beta; *DLAT*, dihydrolipoamide-acetyltransferase; *DLD*, dihydrolipoamide dehydrogenase; *PDHX*, pyruvate dehydrogenase complex, component X, all six subunits of the enzymatic complex PDH; *IDH2*, isocitrate dehydrogenase 2; *SDHA*, *SDHB*, *SDHC*, and *SDHD*, SDH complex, subunits A, B, C, and D; and *FUM*, fumarate hydratase.

nutrient utilization for anabolic processes. Development of future therapies might also fit in this model, targeting self-limiting steps of nutrient production and metabolism.<sup>25,95</sup>

### Oncogenes and tumor suppressor genes participating in the metabolic switch

**Oncogenes.** The phosphoinositide 3-kinase (PI3K) signaling pathway is one of the major pathways linked to the development of several tumors, including primary GBM.<sup>96,97</sup> PI3K is recruited to the cellular membrane through the activation of epidermal growth factor receptor (EGFR), and it is phosphorylated from phosphatidylinositol-4,5-bisphosphate to 3-phosphate, which activates target molecules such as protein kinase b (AKT) and mammalian target of rapamycin (mTOR), which induces cell proliferation and cell survival by

blocking apoptosis. Several molecular participants in this pathway, such as *EGFR*, *PTEN*, and *PIK3CA*, present alterations in GBM.<sup>98</sup>

**The PI3K/AKT pathway** may regulate glucose metabolism by: (1) regulating glucose transporter expression through AKT, which directly stimulates transcription of the *GLUT1*;<sup>99</sup> (2) enhancing glucose capture by *HK2* and inducing aerobic glycolysis by promoting *HK2* binding to voltage-dependent anion channels;<sup>100</sup> and (3) stimulating *PFK1* activity<sup>50</sup> (Figure 2). In addition, activation of the PI3K pathway renders cells dependent on high levels of glucose flux.<sup>101</sup> Small molecules inhibiting the PI3K pathway lead to decreased glucose uptake and correlate with tumor regression;<sup>102</sup> response to therapy has been predicted by the ability to disrupt glucose metabolism measured by <sup>18</sup>F-deoxyglucose positron emission tomography.<sup>103</sup>

AKT is activated when tumor cells need metabolic intermediates for rapid proliferation, and it promotes a glycolytic switch under normoxic conditions without affecting the rate of OXPHOS. Thus, cancer cells turn out to be dependent on aerobic glycolysis for their growth and survival under AKT-mediated metabolic influence; consequently, activated AKT tumor cells undergo rapid cell death when shifted to low-dose glucose conditions.<sup>104</sup>

**HIF-1** is a pleiotropic hypoxia induced transcription factor with a heterodimeric structure composed of HIF-1 $\alpha$  as the oxygen responsive subunit and HIF-1 $\beta$  as the constitutively expressed subunit.<sup>105</sup> Hypoxia is a common microenvironment feature of solid tumors, leading to HIF-1 upregulation and consequently inducing a metabolic switch. HIF-1 target genes are involved in glucose and energy metabolism,<sup>106</sup> including all glycolytic enzyme genes except phosphoglycerate mutase (PGM).<sup>107,108</sup> Additionally, HIF-1 upregulates LDHA,<sup>109</sup> PFK1, through activation of PFKFB3,<sup>110,111</sup> switches the isoform PKM1 to PKM2<sup>112</sup> and activates PDK1, which in turn inhibits PDH, reducing the TCA cycle.<sup>113</sup> HIF also regulates the uptake of glucose through GLUT1 (Figure 2).<sup>114</sup>

**MYC** regulates a broad spectrum of genes involved in cell cycle control, metabolism, mitochondrial function, and regulation of apoptosis. However, the role of MYC is complex because its ectopic expression in cancer can concurrently drive aerobic glycolysis and/or OXPHOS according to the tumor cell microenvironment. MYC may trigger the expression of glycolytic genes or repress microRNAs miR-23a/b to increase GLS and stimulate OXPHOS through the activation of O<sub>2</sub>-dependent glutaminolysis (Figure 2).<sup>115</sup> Then, MYC driven tumor cells are particularly sensitive to glutamine withdrawal,<sup>116</sup> and genes involved in glutamine metabolism appear to be under both direct and indirect transcriptional control of the MYC protein.<sup>115,117</sup> Glutamine depletion from MYC-transformed cells results in the rapid loss of TCA cycle intermediates and cell death.<sup>115</sup> MYC also influences glycolysis by upregulating the majority of glycolytic genes, including HK2, PFK1, LDHA, PKM2, as well as GLUT1 (Figure 2).<sup>113</sup> Deregulated expression of MYC collaborates with HIF-1 to confer the glycolytic (Warburg) phenotype of tumors. Additionally, MYC stimulates mitochondrial biogenesis in both normal and immortalized cells.<sup>118</sup>

**Suppressor genes.** Tumor suppressor pathways can also regulate cellular metabolism and may act to coordinate nutrient utilization with cell physiology.

**TP53** is by far the most well known tumor suppressor gene. Inactivation of *TP53* is observed in more than 50 different types of human cancer,<sup>119</sup> and more than 27,000 mutations were enumerated in the International Agency for Research on Cancer – TP53 Mutation Database (<http://www-p53.iarc.fr/>). *TP53* encodes a nuclear phosphoprotein of 53 kDa, responsible for genomic integrity and cell proliferation control. p53 protein facilitates DNA repair by blocking the cell cycle and induces apoptosis when the DNA damage is unreparable.<sup>120-122</sup> *TP53* mutation in germline cells determines Li-Fraumeni syndrome characterized by predisposition to multiple types of cancer, including breast tumor, sarcoma, and central nervous system tumors.<sup>123,124</sup> *TP53* mutations are also frequent in secondary GBM.<sup>125-127</sup> There are cumulative studies demonstrating a role for p53 in controlling metabolic

genes, such as altering glucose utilization and promoting OXPHOS, but also contributing to the induction of apoptosis and maintaining mitochondrial health and activity by its localization inside the organelle. The most straightforward role of p53 in metabolism is the dampening of glycolysis, which is completely consistent with its function as a tumor suppressor. This limitation of glycolysis may occur in different ways: (1) downregulation of expression of several glucose transporters such as GLUT1 and GLUT4 by direct transcriptional repression<sup>128</sup> and GLUT3 by the indirect reduction of expression through the inhibition of nuclear factor kappa- $\beta$  kinase;<sup>129</sup> (2) ubiquitination and inactivation of PGM;<sup>130</sup> (3) lowering F2,6BP by p53-dependent expression of the TP53-induced glycolysis and apoptosis regulator (TIGAR).<sup>131,132</sup> However, p53 also promotes glycolysis by increasing HK2 and PGM expression through p53-inducible promoters.<sup>133</sup> Additionally, the increase in HK2 activity in concert with a decrease in PFK1 activity (resulting from TIGAR expression) would promote the use of the PPP.<sup>134,135</sup> p53 has also been shown to play a role in promoting OXPHOS through the transcriptional activation of cytochrome c oxidase 2,<sup>136</sup> subunit I of cytochrome c oxidase,<sup>137</sup> and p52R2, a subunit of ribonucleotide reductase<sup>138</sup> as well as by the post-transcriptional regulation of cytochrome oxidase 2.<sup>139</sup> ATP is derived in much higher proportion through OXPHOS in cells expressing p53 than in cells lacking it.<sup>140</sup> p53 also contributes to the maintenance of mitochondrial mass and mtDNA copy number.<sup>141,142</sup>

In addition to the complexity of tumor cell metabolic reprogramming in a context of impulses from oncogenes and inactivation of tumor suppressor genes, the cancer stem cell hypothesis should also be considered to gain a more complete understanding of tumorigenesis and for the efficacy of cancer therapy.

### Targeting cancer stem cell metabolism as a future perspective

The cancer stem cell hypothesis proposes that cancer derives from a small fraction of cancer cells that constitute a self-sustaining cell reservoir, which are responsible for reseeding tumor cells after the first therapeutic approach. There are some preliminary data concerning the metabolism of the stem cells, such as increased expression of PFKFB3 in cycling cells and decreased expression in terminally differentiated neurons.<sup>143</sup> It has been reported that GBM cancer stem cells share gene expression signatures with progenitor cells in the developing forebrain,<sup>144</sup> and preferential overexpression of genes normally enriched in embryonic stem cells, *NANOG*, *OCT4*, *SOX2*, and *MYC*, were activated in poorly differentiated GBM.<sup>145</sup> Moreover, a subpopulation of cells that carry the known progenitor cell marker CD133 has been identified in GBM, and when the expression profiles of CD133<sup>+</sup> GBM cells were compared with CD133<sup>-</sup> cells, 16 genes, many of which had not previously been associated with astrocytomas, were found to be aberrantly expressed relative to corresponding non-neoplastic brain tissue controls.<sup>146</sup> However, the expression profile of genes related to energy metabolism in cancer stem cells remains to be explored.

The development of novel metabolic based drugs holds much promise for the improvement of cancer therapy.



REFERENCES

- Legler JM, Ries LA, Smith MA, Warren JL, Heineman EF, Kaplan RS, et al. Cancer surveillance series: brain and other central nervous system cancers: recent trends in incidence and mortality. *J Natl Cancer Inst.* 1999;91:1382-90, doi: 10.1093/jnci/91.16.1382.
- DeAngelis LM. Brain tumors. *N Engl J Med.* 2001;344:114-23, doi: 10.1056/NEJM20010113440207
- Wrensch M, Minn Y, Chew T, Bondy M, Berger MS. Epidemiology of primary brain tumors: current concepts and review of the literature. *Neuro Oncol.* 2002;4:278-9.
- Furnari FB, Fenton T, Bachoo RM, Mukasa A, Stommel JM, Stegh A, et al. Malignant astrocytic glioma: genetics, biology, and paths to treatment. *Genes Dev.* 2007;21:2683-710, doi: 10.1101/gad.1596707.
- Loius DN, Ohgaki H, Wiestler OD, Cavenee WK, Burger PC, Jouvet A, et al. The 2007 WHO classification of tumours of the central nervous system. *Acta Neuropathol.* 2007;114:97-109, doi: 10.1007/s00401-007-0243-4.
- Jemal A, Siegel R, Ward E, Hao Y, Xu J, Thun MJ. Cancer statistics, 2009. *CA Cancer J Clin.* 2009;59:225-49, doi: 10.3322/caac.20006.
- Tran B, Rosenthal MA. Survival comparison between glioblastoma multiforme and other incurable cancers. *J Clin Neurosci.* 2010;17:417-21, doi: 10.1016/j.jocn.2009.09.004.
- Bauchet L, Mathieu-Daude H, Fabbro-Peray P, Rigau V, Fabbro M, Chinot O, et al. Oncological patterns of care and outcome for 952 patients with newly diagnosed glioblastoma in 2004. *Neuro-oncol.* 2010;12:725-35.
- Schneider T, Mawrin C, Scherlach C, Skalej M, Firsching R. Gliomas in adults. *Dtsch Arztebl Int.* 2010;107:799-807.
- Walker MD, Alexander Jr E, Hunt WE, MacCarty CS, Mahaley MS Jr, Mealey Jr, et al. Evaluation of BCNU and/or radiotherapy in the treatment of anaplastic gliomas. A cooperative trial. *J Neurosurg.* 1978;49:333-43.
- Stupp R, Mason W, Van den Bert MJ, Weller M, Fisher B, Taphoorn MJ, et al. Radiotherapy plus concomitant and adjuvant temozolomide for glioblastoma. *N Engl J Med.* 2005;352:987-96, doi: 10.1056/NEJMoa043330.
- Parsons DW, Jones S, Zhang X, Lin JC, Leary RJ, Angenendt P, et al. An integrated genomic analysis of human glioblastoma multiforme. *Science.* 2008;321:1807-12, doi: 10.1126/science.1164382.
- Parsons DW, Li M, Zhang X, Jones S, Leary RJ, Lin JC, et al. The genetic landscape of the childhood cancer medulloblastoma. *Science.* 2011;331:435-9, doi: 10.1126/science.1198056.
- Fearon ER, Vogelstein B. A genetic model for colorectal tumorigenesis. *Cell.* 1990;61:759-67, doi: 10.1016/0092-8674(90)90186-1.
- The Cancer Genome Atlas Research Network. Comprehensive genomic characterization defines human glioblastoma genes and core pathways. *Nature.* 2008;455:1061-8, doi: 10.1038/nature07385.
- Barbosa KC, Oba-Shinjo SM, Uno M, Carvalho PO, Rosemberg S, Aguiar PH, et al. Association of EGFR c.2073A>T polymorphism with decreased risk of diffusely infiltrating astrocytoma in a Brazilian case-control study. *Int J Biol Markers.* 2008;23:140-6.
- Burim RV, Teixeira SA, Colli BO, Peria FM, Tirapelli LF, Marie SK, et al. ICAM-1 (Lys469Glu) and PECAM-1 (Leu125Val) polymorphisms in diffuse astrocytomas. *Clin Exp Med.* 2009;9:157-63, doi: 10.1007/s10238-009-0040-6.
- Lino M, Merlo A. Translating biology into clinics: the case of glioblastoma. *Curr Opin Cell Biol.* 2009;21:311-16, doi: 10.1016/j.cceb.2008.12.009.
- Larsen C. Genetic and molecular abnormalities of glioblastomas (GBM). *Bull Cancer.* 2010;97:1389-407.
- Gerson SL. MGMT: its role in cancer aetiology and cancer therapeutics. *Nature Rev Cancer.* 2004;4:296-307, doi: 10.1038/nrc1319.
- Hegi ME, Diserens AC, Gorlia T, Hamou MF, de Tribolet N, Weller M, et al. MGMT gene silencing and benefit from temozolomide in glioblastoma. *N Engl J Med.* 2005;352:997-1003, doi: 10.1056/NEJMoa043331.
- Weller M, Stupp R, Reifenberger G, Brandes AA, van den Bent MJ, Wick W, Hegi ME. MGMT promoter methylation in malignant gliomas: ready for personalized medicine? *Nat Rev Neurol.* 2010;6:39-51.
- Warburg O, Posener K, Negelein E. Der Tumoren de Stoffwechsel do den de Ueber. *Biochem Z.* 1924;152:319-44.
- Warburg O. On the origin of cancer cells. *Science.* 1956;123:309-14, doi: 10.1126/science.123.3191.309.
- Tennant DA, Durán RV, Gottlieb E. Targeting metabolic transformation for cancer therapy. *Nature Rev Cancer.* 2010;10:267-77, doi: 10.1038/nrc2817.
- Saiati LM, Amir-Ahmady B. Dietary regulation of expression of glucose-6-phosphate dehydrogenase. *Annu Rev Nutr.* 2001;21:121-40, doi: 10.1146/annurev.nutr.21.1.121.
- Tennant DA, Duran RV, Boulahbel H, Gottlieb E. Metabolic transformation in cancer. *Carcinogenesis.* 2009;30:1269-80, doi: 10.1093/carcin/bgp070.
- Kim JW, Tchernyshyov I, Semenza GL, Dang CV. HIF-1-mediated expression of pyruvate dehydrogenase kinase: a metabolic switch required for cellular adaptation to hypoxia. *Cell Metab.* 2006;3:177-85, doi: 10.1016/j.cmet.2006.02.002.
- Dang CV, Semenza GI. Oncogenic alteration of metabolism. *Trends Biochem Sci.* 1999;24:68-72, doi: 10.1016/S0968-0004(98)01344-9.
- Fantin VR, St-Pierre J, Leder P. Attenuation of LDH-A expression uncovers a link between glycolysis, mitochondrial physiology, and tumor maintenance. *Cancer Cell.* 2006;9:425-34, doi: 10.1016/j.ccr.2006.04.023.
- Le A, Cooper CR, Gouw AM, Dinavahi R, Maitra A, Deck LM, et al. Inhibition of lactate dehydrogenase A induces oxidative stress and inhibits tumor progression. *Proc Natl Acad Sci USA.* 2010;107:2037-42, doi: 10.1073/pnas.0914433107.
- Jones RG, Thompson CB. Tumor suppressors and cell metabolism: a recipe for cancer growth. *Genes Dev.* 2009;23:537-48, doi: 10.1101/gad.1756509.
- McFate T, Mohyeldin A, Lu H, Thakar J, Henriques J, Halim ND, et al. Pyruvate dehydrogenase complex activity controls metabolic and malignant phenotype in cancer cells. *J Biol Chem.* 2008;283:22700-8, doi: 10.1074/jbc.M801765200.
- Sun RC, Fadia M, Dahlstrom JE, Parish CR, Board PG, Blackburn AC. Reversal of the glycolytic phenotype by dichloroacetate inhibits metastatic breast cancer cell growth in vitro and in vivo. *Breast Cancer Res Treat.* 2009;120:253-60, doi: 10.1007/s10549-009-0435-9.
- Gatenby RA, Gawlinski ET, Gmitro AF, Kaylor B, Gillies RJ. Acid-mediated tumor invasion: a multidisciplinary study. *Cancer Res.* 2006;66:5216-23, doi: 10.1158/0008-5472.CAN-05-4193.
- Mazurek S, Boschel CB, Hugo F, Eigenbrodt E. Pyruvate kinase type M2 and its role in tumor growth and spreading. *Semin Cancer Biol.* 2005;15:300-8, doi: 10.1016/j.semcancer.2005.04.009.
- Christofk HR, Vander Heiden MG, Harris MH, Ramanathan A, Gerszten RE, Wei R, et al. The M2 splice isoform of pyruvate kinase is important for cancer metabolism and tumour growth. *Nature.* 2008;452:230-3, doi: 10.1038/nature06734.
- Mazurek S, Grimm H, Boschek CB, Vaupel P, Eigenbrodt E. Pyruvate kinase type M2: a crossroad in the tumor metabolome. *Br J Nutr.* 2002;87:S23-9, doi: 10.1079/BJN2001454.
- Christofk HR, Vander Heiden MG, Wu N, Asara JM, Cantley LC. Pyruvate kinase M2 is a phosphotyrosine-binding protein. *Nature.* 2008;452:181-6, doi: 10.1038/nature06667.
- Eigenbrodt E, Reinacher M, Scheefers-Borchel U, Scheefers H, Friis R. Double role for pyruvate kinase type M2 in the expansion of phosphometabolite pools found in tumor cells. *Crit Rev Oncog.* 1992;3:91-115.
- Deprez J, Vertommen D, Alessi DR, Hue L, Rider MH. Phosphorylation and activation of heart 6-phosphofructo-2-kinase bt protein kinase B and other protein kinases of the insulin signaling cascades. *J Biol Chem.* 1997;272:17269-75, doi: 10.1074/jbc.272.28.17269.
- Clem B, Telang S, Clem A, Yalcin A, Meier J, Simmons A, et al. Small-molecule inhibition of 6-phosphofructo2-kinase activity suppresses glycolytic flux and tumor growth. *Mol Cancer Ther.* 2008;7:110-20, doi: 10.1158/1535-7163.MCT-07-0482.
- Mathupala SP, Ko YH, Pedersen PL. Hexokinase II: cancer's double-edged sword acting as both facilitator and gatekeeper of malignancy when bound to mitochondria. *Oncogene.* 2006;25:4777-86, doi: 10.1038/sj.onc.1209603.
- Colombini M. VDAC: the channel at the interface between mitochondria and the cytosol. *Mol Cell Biochem.* 2004;256-7:107-15, doi: 10.1023/B:MCBI.0000009862.17396.8d.
- Oudard S, Carpentier A, Banu E, Fauchon F, Celerier D, Poupon MF, et al. Phase II study of lomidamine and diazepam in the treatment of recurrent glioblastoma multiforme. *J Neurooncol.* 2003;63:81-6, doi: 10.1023/A:1023756707900.
- Cao X, Bloomston M, Zhang T, Frankel WL, Jia G, Wang B, et al. Synergistic antipancratic tumor effect by simultaneously targeting hypoxic cancer cells with HSP90 inhibitor and glycolysis inhibitor. *Clin Cancer Res.* 2008;14:1831-9, doi: 10.1158/1078-0432.CCR-07-1607.
- Ko YH, Smith BL, Wang Y, Pomper MG, Rini DA, Torbenson MS, et al. Advanced cancers: eradication in all cases using 3-bromopyruvate therapy to deplete ATP. *Biochem Biophys Res Commun.* 2004;324:269-75, doi: 10.1016/j.bbrc.2004.09.047.
- DeBerardinis RJ, Lum JJ, Hatzivassiliou G, Thompson CB. The biology of cancer: metabolic reprogramming fuels cell growth and proliferation. *Cell Metab.* 2008;7:11-20, doi: 10.1016/j.cmet.2007.10.002.
- Hardie DG. AMP-activated/SNF1 protein kinases: conserved guardians of cellular energy. *Nature Rev Mol Cell Biol.* 2007;8:774-85, doi: 10.1038/nrm2249.
- DeBerardinis RJ, Mancuso A, Daikhin E, Nissim I, Yudkoff M, Wehrli S, et al. Beyond aerobic glycolysis: transformed cells can engage in glutamine metabolism that exceeds the requirement for protein and nucleotide synthesis. *Proc Natl Acad Sci USA.* 2007;104:19345-50, doi: 10.1073/pnas.0709747104.
- DeBerardinis RJ, Cheng T. Q's next: the diverse functions of glutamine in metabolism, cell biology and cancer. *Oncogene.* 2009;29:313-24, doi: 10.1038/onc.2009.358.

52. Samid D, Ram Z, Hudgins WR, Shack S, Liu L, Walbridge S, et al. Selective activity of phenylacetate against malignant gliomas: resemblance to fetal brain damage in phenylketonuria. *Cancer Res.* 1994;54:891-5.
53. Rosenfeld H, Roberts J. Enhancement of antitumor activity of glutamine antagonists 6-diazo-5-oxo-L-norleucine and acivicin in cell culture by glutaminase-asparaginase. *Cancer Res.* 1981;41:1324-8.
54. Hatzivassiliou G, Zhao F, Bauer DE, Andreadis C, Shaw AN, Dhanak D, et al. ATP citrate lyase inhibition can suppress tumor cell growth. *Cancer Cell.* 2005;8:311-21, doi: 10.1016/j.ccr.2005.09.008.
55. Li JN, Gorospe M, Chrest FJ, Kumaravel TS, Evans MK, Han WF, et al. Pharmacological inhibition of fatty acid synthase activity produces both cytostatic and cytotoxic effects modulated by p53. *Cancer Res.* 2001;61:1493-9.
56. Hau PP, Sabatini DM. Cancer cell metabolism: Warburg and beyond. *Cell.* 2008;134:703-7, doi: 10.1016/j.cell.2008.08.021.
57. Mera P, Bentebibel A, López-Viñas E, Cordenete AG, Gurunathan C, Sebastián D, et al. C75 is converted to C75-CoA in the hypothalamus, where it inhibits carnitine palmitoyltransferase I and decreases food intake and body weight. *Biochem Pharmacol.* 2009;77:1084-95, doi: 10.1016/j.bcp.2008.11.020.
58. Gottlieb E, Tomlinson IP. Mitochondrial tumor suppressors: a genetic and biochemical update. *Nature Rev Cancer.* 2005;5:857-66, doi: 10.1038/nrc1737.
59. Ewald B, Sampath D, Plunkett W. Nucleotide analog: molecular mechanisms signaling cell death. *Oncogene.* 2008;27:6522-37, doi: 10.1038/onc.2008.316.
60. Coy JF, Dressler D, Wilde J, Schubert P. Mutations in the transketolase-like gene TKTL1: clinical implications for neurodegenerative diseases, diabetes and cancer. *Clin Lab.* 2005;51:257-73.
61. Xu X, Zur Hausen A, Coy JF, Lochelt M. Transketolase-like protein 1 (TKTL1) is required for rapid cell growth and full viability of human tumor cells. *Int J Cancer.* 2009;124:1330-7, doi: 10.1002/ijc.24078.
62. Duarte NC, Becker SA, Jamshidi N, Thiele I, Mo ML, Vo TD, et al. Global reconstruction of the human metabolic network based on genomic and bibliomic data. *Proc Natl Acad Sci USA.* 2007;104:1777-82, doi: 10.1073/pnas.0610772104.
63. Uno M, Oba-Shinjo SM, Silva R, Miura F, Clara CA, Almeida JRW, et al. *IDH1* mutations in a Brazilian series of glioblastoma. *Clinics.* 2011;66:163-5, doi: 10.1590/S1807-59322011000100028.
64. Bleeker FE, Lamba S, Leenstra S, Troost D, Hulsebos T, Vandertop WP, et al. *IDH1* mutations at residue p.R132 (*IDH1*(R132)) occur frequently in high-grade gliomas but not in other solid tumors. *Hum Mutat.* 2009;30:7-11, doi: 10.1002/humu.20937.
65. Yan H, Parsons DW, Jin G, McLendon R, Rasheed BA, Yuan W, et al. *IDH1* and *IDH2* mutations in gliomas. *N Engl J Med.* 2009;360:765-73, doi: 10.1056/NEJMoa0808710.
66. Geisbretsch BV, Gould SJ. The human *PICD* gene encodes a cytoplasmic and peroxisomal NADP(+)-dependent isocitrate dehydrogenase. *J Biol Chem.* 1999;274:30527-33, doi: 10.1074/jbc.274.43.30527.
67. Yoshihara T, Hamamoto T, Munakata R, Tajiri R, Ohsumi M, Yokota S. Localization of cytosolic NADP-dependent isocitrate dehydrogenase in the peroxisomes of rat liver cells: biochemical and immunocytochemical studies. *J Histochem Cytochem.* 2001;49:1123-31, doi: 10.1177/002215540104900906.
68. Winkler BS, DeSantis N, Solomon F. Multiple NADPH-producing pathways control glutathione (GSH) content in retina. *Exp Eye Res.* 1986;4:829-47, doi: 10.1016/S0014-4835(86)80013-6.
69. Haselbeck RJ, McAlister-Henn L. Function and expression of yeast mitochondrial NAD- and NADP-specific isocitrate dehydrogenase. *J Biol Chem.* 1993;268:12116-22.
70. Reitman ZJ, Yan H. Isocitrate dehydrogenase 1 and 2 mutations in cancer: alterations at a crossroad of cellular metabolism. *J Natl Cancer Inst.* 2010;102:932-41, doi: 10.1093/jnci/djq187.
71. Thompson CB. Metabolic enzymes as oncogenes or tumor suppressors. *N Engl J Med.* 2009;360:813-15, doi: 10.1056/NEJMe0810213.
72. Bleeker FE, Atai NA, Lamba S, Jonker A, Rijkeboer D, Bosch KS, et al. The prognostic *IDH1* (R132) mutation is associated with reduced NADP+-dependent *IDH* activity in glioblastoma. *Acta Neuropatholol.* 2010;119:487-94, doi: 10.1007/s00401-010-0645-6.
73. Zhao S, Lin Y, Xu W, Jiang W, Zha Z, Wang P, et al. Glioma-derived mutations in *IDH1* dominantly inhibit *IDH1* catalytic activity and induce HIF-1 $\alpha$ . *Science.* 2009;324:261-5, doi: 10.1126/science.1170944.
74. Fu Y, Huang R, Du J, Yang R, An N, Liang A. Glioma-derived mutations in *IDH*: from mechanism to potential therapy. *Biochem Biophys Res Commun.* 2010;397:127-30, doi: 10.1016/j.bbrc.2010.05.115.
75. Yu T, Robotham JL, Yoon Y. Increased production of reactive oxygen species in hyperglycemic conditions requires dynamic change of mitochondrial morphology. *Proc Natl Acad Sci USA.* 2006;103:2653-8, doi: 10.1073/pnas.0511154103.
76. Lian BC, Grootveld M. The importance of mitochondria in the tumorigenic phenotype: gliomas as the paradigm (review). *Int J Mol Med.* 2011;27:159-71.
77. Lee HC, Wei YH. Mitochondrial DNA instability and metabolic shift in human cancers. *Int J Mol Sci.* 2009;10:674-701, doi: 10.3390/ijms10020674.
78. Ordys BB, Launay S, Deighton RF, McCulloch J, Whittle IR. The role of mitochondria in glioma pathophysiology. *Mol Neurobiol.* 2010;42:64-75, doi: 10.1007/s12035-010-8133-5.
79. Correia RL, Oba-Shinjo SM, Uno M, Huang N, Marie SK. Mitochondrial DNA depletion and its correlation with TFAM, TFB1M, TFB2M and POLG in human diffusely infiltrating astrocytomas. *Mitochondrion.* 2011;11:48-53, doi: 10.1016/j.mito.2010.07.001.
80. Santandreu FM, Brell M, Gene AH, Guevara R, Oliver J, Couce ME, et al. Differences in mitochondrial function and antioxidant systems between regions of human glioma. *Cel Physiol Biochem.* 2008;22:757-68, doi: 10.1159/000185559.
81. Gatenby RA, Gillies RJ. Why do cancers have high aerobic glycolysis? *Nature Rev Cancer.* 2004;4:891-9, doi: 10.1038/nrc1478.
82. Xu RH, Pelicano H, Zhou Y, Carew JS, Feng L, Bhalla KN, et al. Inhibition of glycolysis in cancer cells: a novel strategy to overcome drug resistance associated with mitochondrial respiratory defect and hypoxia. *Cancer Res.* 2005;65:613-21, doi: 10.1158/0008-5472.CAN-04-4313.
83. Maschek G, Savaraj N, Priebe W, Braunschweiger P, Hamilton K, Tidmarsh GF, et al. 2-deoxy-D-glucose increases the efficacy of adriamycin and paclitaxel in human osteosarcoma and non-small cell lung cancers in vivo. *Cancer Res.* 2004;64:31-4, doi: 10.1158/0008-5472.CAN-03-3294.
84. Papaldo P, Lopez M, Cortesi E, Cammilluzzi E, Antimi M, Terzoli E, et al. Addition of either lonidamine or granulocyte colony-stimulating factor does not improve survival in early breast cancer patients treated with high-dose epirubicin and cyclophosphamide. *J Clin Oncol.* 2003;21:3462-8, doi: 10.1200/JCO.2003.03.034.
85. De Lena M, Lorusso V, Latorre A, Fanizza G, Gargano G, Caporusso L, et al. Paclitaxel, cisplatin and lonidamine in advanced ovarian cancer. A phase II study. *Eur J Cancer.* 2001;37:364-8, doi: 10.1016/S0959-8049(00)00400-7.
86. Di Cosimo S, Ferretti G, Papaldo P, Carlini P, Fabi A, Cognetti F. Lonidamine: efficacy and safety in clinical trials for the treatment of solid tumors. *Drugs Today (Barc).* 2003;39:157-74.
87. Kourelis TV, Siegel RD. Metformin and cancer: new applications for an old drug. *Med Oncol.* 2011 Feb 8. [Epub ahead of print] doi: 10.1007/S12032-011-9846-7.
88. Jalving M, Gietema JA, Lefrandt JD, de Jong S, Reyners AK, Gans RO, et al. Metformin: taking away the candy for cancer? *Eur J Cancer.* 2010;46:2369-80, doi: 10.1016/j.ejca.2010.06.012.
89. Evans JM, Donnelly LA, Emslie-Smith AM, Alessi DR, Morris AD. Metformin and reduced risk of cancer in diabetic patients. *BMJ.* 2005;330:1304-5, doi: 10.1136/bmj.38415.708634.F7.
90. Seyfried TN, Kiebish M, Mukherjee P, Marsh J. Targeting energy metabolism in brain cancer with calorically restricted ketogenic diets. *Epilepsia.* 2008;49 Suppl 8:114-16, doi: 10.1111/j.1528-1167.2008.01853.x.
91. Seyfried BT, Kiebish M, Marsh J, Mukherjee P. Targeting energy metabolism in brain cancer through calorie restriction and the ketogenic diet. *J Cancer Res Ther.* 2009;5(Suppl 1):S7-15.
92. Smolkova K, Plecítá-Hlavatá L, Bellance N, Bernard G, Rossignol R, Jezek P. Waves of gene regulation suppress and then restore oxidative phosphorylation in cancer cells. *Int J Biochem Cell Biol.* 2010 May 10. [Epub ahead of print] doi: 10.1016/j.biocel.2010.05.003.
93. Scrideli CA, Carlotti CG Jr, Okamoto OK, Andrade VS, Cortez MA, Motta FJ, et al. Gene expression profile analysis of primary glioblastomas and non-neoplastic brain tissue: identification of potential target genes by oligonucleotide microarray and real-time quantitative PCR. *J Neurooncol.* 2008;88:281-91, doi: 10.1007/s11060-008-9579-4.
94. Marie SK, Okamoto OK, Uno M, Hasegawa AP, Oba-Shinjo SM, Cohen T. Waves of gene regulation suppress and then restore oxidative phosphorylation. Maternal embryonic leucine zipper kinase transcript abundance correlates with malignancy grade in human astrocytomas. *Int J Cancer.* 2008;122:807-15.
95. Vander Heiden MG, Cantley LC, Thompson CB. Understanding the Warburg effect: the metabolic requirements of cell proliferation. *Science.* 2009;324:1029-33, doi: 10.1126/science.1160809.
96. Belda-Iniesta C, de Castro CJ, Sereno M, González-Báron M, Perona R. Epidermal growth factor receptor and glioblastoma multiforme: molecular basis for a new approach. *Clin Transl Oncol.* 2008;10:73-7, doi: 10.1007/s12094-008-0159-z.
97. Gallia GL, Rand V, Siu IM, Eberhart CG, James CD, Marie SK, et al. *PIK3CA* gene mutations in pediatric and adult glioblastoma multiforme. *Mol Cancer Res.* 2006;4:709-14, doi: 10.1158/1541-7786.MCR-06-0172.
98. Scrideli CA, Carlotti CG Jr, Mata JF, Neder L, Machado HR, Oba-Sinjo SM, et al. Prognostic significance of co-overexpression of the *EGFR/IGFBP-2/HIF-2A* genes in astrocytomas. *J Neurooncol.* 2007;83:233-9, doi: 10.1007/s11060-007-9328-0.

99. Barthel A, Okino ST, Liao J, Nakatani K, Li J, Whitlock JP Jr, et al. Regulation of GLUT1 gene transcription by the serine/threonine kinase akt1. *J Biol Chem.* 1999;274:20281-6, doi: 10.1074/jbc.274.29.20281.
100. Pedersen PL. Warburg, me and Hexokinase 2: multiple discoveries of key molecular events underlying one of cancer's most common phenotypes, the "Warburg Effect", i.e., elevated glycolysis in the presence of oxygen. *J Bioenerg Biomembr.* 2007;39:211-22, doi: 10.1007/s10863-007-9094-x.
101. Buzzai M, Bauer DE, Jones RG, DeBerardinis RJ, Hatzivassiliou G, Elstrom RL, et al. The glucose dependence of Akt-transformed cells can be reversed by pharmacologic activation of fatty acid beta-oxidation. *Oncogene.* 2005;16:4165-73, doi: 10.1038/sj.onc.1208622.
102. Engelman JA, Chen L, Tan X, Crosby K, Guimaraes AR, Upadhyay R, et al. Effective use of PI3K and MEK inhibitors to treat mutant Kras G12D and PIK3CA H1047R murine lung cancers. *Nature Med.* 2008;14:1351-6, doi: 10.1038/nm.1890.
103. Bem-Haim S, Ell P. 18F-FDG PET and PET/CT in the evaluation of cancer treatment response. *J Nucl Med.* 2009;50:88-99, doi: 10.2967/jnumed.108.054205.
104. Elstrom RL, Bauer DE, Buzzai M, Karnauskas R, Harris MH, Plas DR, et al. Akt stimulates aerobic glycolysis in cancer cells. *Cancer Res.* 2004;64:3892-9, doi: 10.1158/0008-5472.CAN-03-2904.
105. Gleadle JM, Ratcliffe PJ. Hypoxia and the regulation of gene expression. *Mol Med Today.* 1998;4:122-9, doi: 10.1016/S1357-4310(97)01198-2.
106. Semenza GL, Roth PH, Fang HM, Wang GL. Transcriptional regulation of genes encoding glycolytic enzymes by hypoxia-inducible factor 1. *J Biol Chem.* 1994;269:23757-63.
107. Yeung SJ, Pan J, Lee MH. Roles of p53, MYC and HIF-1 in regulating glycolysis - the seventh hallmark of cancer. *Cell Mol Life Sci.* 2008;65:3981-99, doi: 10.1007/s00018-008-8224-x.
108. Kaelin Jr WG. The von Hippel-Lindau suppressor protein: O<sub>2</sub> sensing and cancer. *Nature Rev Cancer.* 2008;8:865-73, doi: 10.1038/nrc2502.
109. Semenza GL, Jiang BH, Leung SW, Passantino R, Concordet JP, Maire P, et al. Hypoxia response elements in the aldolase A, enolase 1, and lactate dehydrogenase A gene promoters contain essential binding sites for hypoxia-inducible factor 1. *J Biol Chem.* 1996;271:32529-37, doi: 10.1074/jbc.271.51.32529.
110. Minchenko A, Leshchinsky I, Opentanova I, Sang N, Srinivas V, Armstead V, et al. Hypoxia-inducible factor-1-mediated expression of the 6-phosphofructo-2-kinase/fructose-2,6-bisphosphatase-3 (PFKFB3) gene. Its possible role in the Warburg effect. *J Biol Chem.* 2002;277:6183-7.
111. Fukasawa M, Tsuchiya T, Takayama E, Shinomiya N, Uyeda K, Sakakibara R, et al. Identification and characterization of the hypoxia-responsive element of the human placental 6-phosphofructo-2-kinase/fructose-2,6-bisphosphatase gene. *J Biochem.* 2004;136:273-7, doi: 10.1093/jb/mvh137.
112. Kress S, Stein A, Maurer P, Weber B, Reichert J, Buchmann A, et al. Expression of hypoxia-inducible genes in tumor cells. *J Cancer Res Clin Oncol.* 1998;124:315-20, doi: 10.1007/s004320050175.
113. Kim JW, Dang CV. Cancer's molecular sweet tooth and the Warburg effect. *Cancer Res.* 2006;66:8927-30, doi: 10.1158/0008-5472.CAN-06-1501.
114. Stubbs M, Griffiths JR. The altered metabolism of tumors: HIF-1 and its role in the Warburg effect. *Adv Enzyme Regul.* 2010;50:44-55, doi: 10.1016/j.advenzreg.2009.10.027.
115. Gao P, Tchernyshyov I, Chang TC, Lee YS, Kita K, Ochi T, et al. C-Myc suppression of miR-23a/b enhances mitochondrial glutaminase expression and glutamine metabolism. *Nature.* 2009;458:762-5, doi: 10.1038/nature07823.
116. Yuneva M, Zamboni N, Oefner P, Sachidanandam R, Lazebnik Y. Deficiency in glutamine but not glucose induces MYC-dependent apoptosis in human cells. *J Cell Biol.* 2007;178:93-105, doi: 10.1083/jcb.200703099.
117. Wise DR, DeBerardinis RJ, Mancuso A, Sayed N, Zhang XY, Pfeiffer HK, et al. Myc regulates a transcriptional program that stimulates mitochondrial glutaminolysis and leads to glutamine addiction. *Proc Natl Acad Sci USA.* 2008;105:18782-7, doi: 10.1073/pnas.0810199105.
118. Morrish F, Isern N, Sadilek M, Jeffrey M, Hockenbery DM. c-Myc activates multiple metabolic networks to generate substrates for cell-cycle entry. *Oncogene.* 2009;28:2458-91, doi: 10.1038/ncr2009.112.
119. Prives C, Hall PA. The p53 pathway. *J Pathol.* 1999;187:112-26, doi: 10.1002/(SICI)1096-9896(199901)187:1<112::AID-PATH250>3.0.CO;2-3.
120. Vogelstein B, Kinzler KW. p53 function and dysfunction. *Cell.* 1992;70:523-6, doi: 10.1016/0092-8674(92)90421-8.
121. Sidransky D, Hollstein M. Clinical implications of the p53 gene. *Annu Rev Med.* 1996;47:285-301, doi: 10.1146/annurev.med.47.1.285.
122. Hupp TR, Meek DW, Midgley C, Lane DP. Regulation of the specific DNA binding function of p53. *Cell.* 1992;71:875-86, doi: 10.1016/0092-8674(92)90562-Q.
123. Li FP, Fraumeni JF Jr. Soft-tissue sarcomas, breast cancer, and other neoplasms. A familial syndrome? *Ann Intern Med.* 1969;71:747-52.
124. Malkin D, Li FP, Strong LC, Fraumeni JF Jr, Nelson CE, Kim DH, et al. Germ line p53 mutations in a familial syndrome of breast cancer, sarcomas, and other neoplasms. *Science.* 1990;250:1233-8, doi: 10.1126/science.1978757.
125. Newcomb EW, Madonia WJ, Pisharody S, Lang FF, Koslow M, Miller DC. A correlative study of p53 protein alteration and p53 gene mutation in glioblastoma multiforme. *Brain Pathol.* 1993;3:229-35, doi: 10.1111/j.1750-3639.1993.tb00749.x.
126. Uno M, Oba-Shinjo SM, de Aguiar PH, Leite CC, Rosemberg S, Miura FK, et al. Detection of somatic TP53 splice site mutations in diffuse astrocytomas. *Cancer Lett.* 2005;224:321-7, doi: 10.1016/j.canlet.2004.10.022.
127. Ohgaki H, Kleihues P. Genetic pathways to primary and secondary glioblastoma. *Am J Pathol.* 2007;170:1445-53, doi: 10.2353/ajpath.2007.070011.
128. Schwartzberg-Bar-Yoseph F, Armoni M, Karnieli E. The tumor suppressor p53 down-regulates glucose transporters GLUT1 and GLUT4 gene expression. *Cancer Res.* 2004;64:2627-33, doi: 10.1158/0008-5472.CAN-03-0846.
129. Kawauchi K, Araki K, Tobiume K, Tanaka N. p53 regulates glucose metabolism through an IKK-NF-kappaB pathway and inhibits cell transformation. *Nature Cell Biol.* 2008;10:611-18, doi: 10.1038/ncb1724.
130. Kondoh H, Leonart ME, Gil J, Wang J, Degan P, Peters G, et al. Glycolytic enzymes can modulate cellular lifespan. *Cancer Res.* 2005;65:177-85.
131. Green DR, Chipuk JE. p53 and metabolism: inside the TIGAR. *Cell.* 2006;126:30-2, doi: 10.1016/j.cell.2006.06.032.
132. Li H, Jogl G. Structural and biochemical studies of TIGAR (TP53-induced glycolysis and apoptosis regulator). *J Biol Chem.* 2009;284:1748-54, doi: 10.1074/jbc.M807821200.
133. Mathupala SP, Heese C, Pedersen PL. Glucose catabolism in cancer cells. The type II hexokinase promoter contains functionally active response elements for the tumor suppressor p53. *J Biol Chem.* 1997;272:22776-80.
134. Vousden KH. Functions of p53 in metabolism and invasion. *Biochem Soc Trans.* 2009;37:511-17, doi: 10.1042/BST0370511.
135. Gottlieb E, Vousden KH. p53 regulation of metabolic pathways. *Cold Spring Harb Perspect Biol.* 2010;2:a001040, doi: 10.1101/cshperspect.a001040.
136. Matoba S, Kang JG, Patino WD, Wragg A, Boehm M, Gavrillova O, et al. p53 regulates mitochondrial respiration. *Science.* 2006;312:1650-3, doi: 10.1126/science.1126863.
137. Okamura S, Ng CC, Koyama K, Takei Y, Arakawa H, Monden M, et al. Identification of seven genes regulated by wild-type p53 in a colon cancer cell line carrying a well-controlled wild-type p53 expression system. *Oncology Res.* 1999;11:281-5.
138. Bourdon A, Minai L, Serre V, Jais JP, Sarzi E, Aubert S, et al. Mutation of RRM2B, encoding p53-controlled ribonucleotide reductase (p53R2), causes severe mitochondrial DNA depletion. *Nature Genet.* 2007;39:776-80, doi: 10.1038/ng2040.
139. Zhou S, Kachhap S, Singh KK. Mitochondrial impairment in p53-deficient human cancer cells. *Mutagenesis.* 2003;18:287-92, doi: 10.1093/mutage/18.3.287.
140. Ma W, Sung HJ, Park JY, Matoba S, Hwang PM. A pivotal role for p53: balancing aerobic respiration and glycolysis. *J Bioenerg Biomembr.* 2007;39:243-6, doi: 10.1007/s10863-007-9083-0.
141. Kulawiec M, Ayyasamy V, Singh KK. p53 regulates mtDNA copy number and mitochekpoint pathway. *J Carcinogenesis.* 2009;8:8, doi: 10.4103/1477-3163.50893.
142. Lebedeva MA, Eaton JS, Shadel GS. Loss of p53 causes mitochondrial DNA depletion and altered mitochondrial reactive oxygen species homeostasis. *Biochim Biophys Acta.* 2009;1787:328-34, doi: 10.1016/j.bbabi.2009.01.004.
143. Herrero-Mendez A, Almeida A, Fernández E, Maestre C, Moncada S, Bolaños JP. The bioenergetic and antioxidant status of neurons is controlled by continuous degradation of a key glycolytic enzyme by APC/C-Cdh1. *Nature Cell Biol.* 2009;11:747-52, doi: 10.1038/ncb1881.
144. Phillips HS, Kharbada S, Chen R, Forrest WF, Soriano RH, Wu TD, et al. Molecular subclasses of high-grade glioma predict prognosis, delineate a pattern of disease progression and resemble stages in neurogenesis. *Cancer Cell.* 2006;9:157-73, doi: 10.1016/j.ccr.2006.02.019.
145. Bem-Porath I, Thomson MW, Carey VJ, Ge R, Bell GW, Regev A, et al. An embryonic stem cell-like gene expression signature in poorly differentiated aggressive human tumors. *Nature Genet.* 2008;40:499-507, doi: 10.1038/ng.127.
146. Okamoto OK, Oba-Shinjo SM, Lopes L, Nagahashi Marie SK. Expression of HOXC9 and E2F2 are up-regulated in CD133(+) cells isolated from human astrocytomas and associate with transformation of human astrocytes. *Biochim Biophys Acta.* 2007;1769:437-42.