

Developing a new endograft for the treatment of juxtarenal aortic aneurysms: definition and experimentation

Sergio Q. Belczak,* Luiz LANZIOTTI, Yuri Botelho, Ricardo Aun, Erasmo S. da Silva, Pedro Puech-Leão, Nelson de Luccia

Faculdade de Medicina da Universidade de São Paulo, Department of Vascular Surgery, São Paulo/SP, Brazil.

OBJECTIVES: To analyze angiotomographic parameters of juxtarenal aneurysms to assess the applicability of an endograft model to patients and to create in vitro and in vivo models to assess the new endograft.

METHODS: A total of 49 patients with juxtarenal aneurysms were submitted to angiotomographic evaluation, and parameters such as the aortic diameter, the length of the neck, and the angulations of the celiac trunk, superior mesenteric artery and renal arteries; the distances between them; and anatomic variations were analyzed. Based on these parameters, an endograft model was developed and tested in a newly created in vitro model of juxtarenal aneurysm. An experimental model of juxtarenal aneurysm was then established in six pigs weighing 50–60 kg to assess the new endograft model.

RESULTS: The angiotomographic parameters of juxtarenal aneurysm measured in this study were similar to those reported in the literature and allowed the development of an endograft based on the hourglass concept, which was applicable to 85.8% of the patients. The in vitro model of juxtarenal aneurysm evidenced good radiopacity and functionality and permitted adjustments in the new device and technical improvements in the procedures for treating these aneurysms. In addition, the porcine model of juxtarenal aneurysm was successfully created in all six animals using a bovine pericardial patch, and use of the new endograft in three pilot procedures evidenced its feasibility.

CONCLUSIONS: The Hourglass endograft was rendered applicable to treatment of the majority of patients with juxtarenal aneurysms simply by changing its diameter. Moreover, the new in vitro and in vivo models were shown to be effective for assessing both the presented endograft and experiments assessing the endovascular treatment of juxtarenal aneurysms.

KEYWORDS: Juxtarenal aortic abdominal aneurysm; Endovascular aneurysm repair; EVAR.

Belczak SQ, LANZIOTTI L, Botelho Y, Aun R, Silva ES, Puech-Leão P, et al. Developing a new endograft for the treatment of juxtarenal aortic aneurysms: definition and experimentation. *Clinics*. 2015;70(6):435-440

Received for publication on January 15, 2015; First review completed on March 30, 2015; Accepted for publication on March 30, 2015

E-mail: belczak@gmail.com

*Corresponding author

INTRODUCTION

Juxtarenal aneurysms (JRAs) are defined as short-necked (<15 mm) infrarenal aortic aneurysms and comprise 15% of all abdominal aortic aneurysms (1). For patients younger than 65 years of age with low surgical risk, open repair is considered the gold-standard treatment, and early mortality ranges from 0% to 8.6%. Complications associated with supra-renal clamping are reported in 3.1% to 6.1% of patients (2), and 0% to 3.8% of all patients require

permanent dialysis (3). Endovascular repair (EVAR) is indicated for older patients and for those with severe comorbidities or high surgical risk, and early mortality ranges from 0.8% to 4.1% (4).

Endovascular procedures for the treatment of JRA include a hybrid technique, fenestrated or branched endografts, and the chimney technique (5) and are associated with more early and late postoperative complications, and especially renal insufficiency, endoleaks and thrombosis of the stent (6). Certain authors consider endovascular approaches to be contraindicated for JRA (4), but a recent systematic review (7) comparing open and endovascular repair of JRA showed promising results for EVAR, with significantly lower rates of two-year mortality compared with open repair (16% and 23%, respectively). However, the rates remain higher than those observed in infrarenal aneurysms with a neck length > 15 mm (7.8%) (8).

Copyright © 2015 CLINICS – This is an Open Access article distributed under the terms of the Creative Commons Attribution Non-Commercial License (<http://creativecommons.org/licenses/by-nc/3.0/>) which permits unrestricted non-commercial use, distribution, and reproduction in any medium, provided the original work is properly cited.

DOI: 10.6061/clinics/2015(06)09

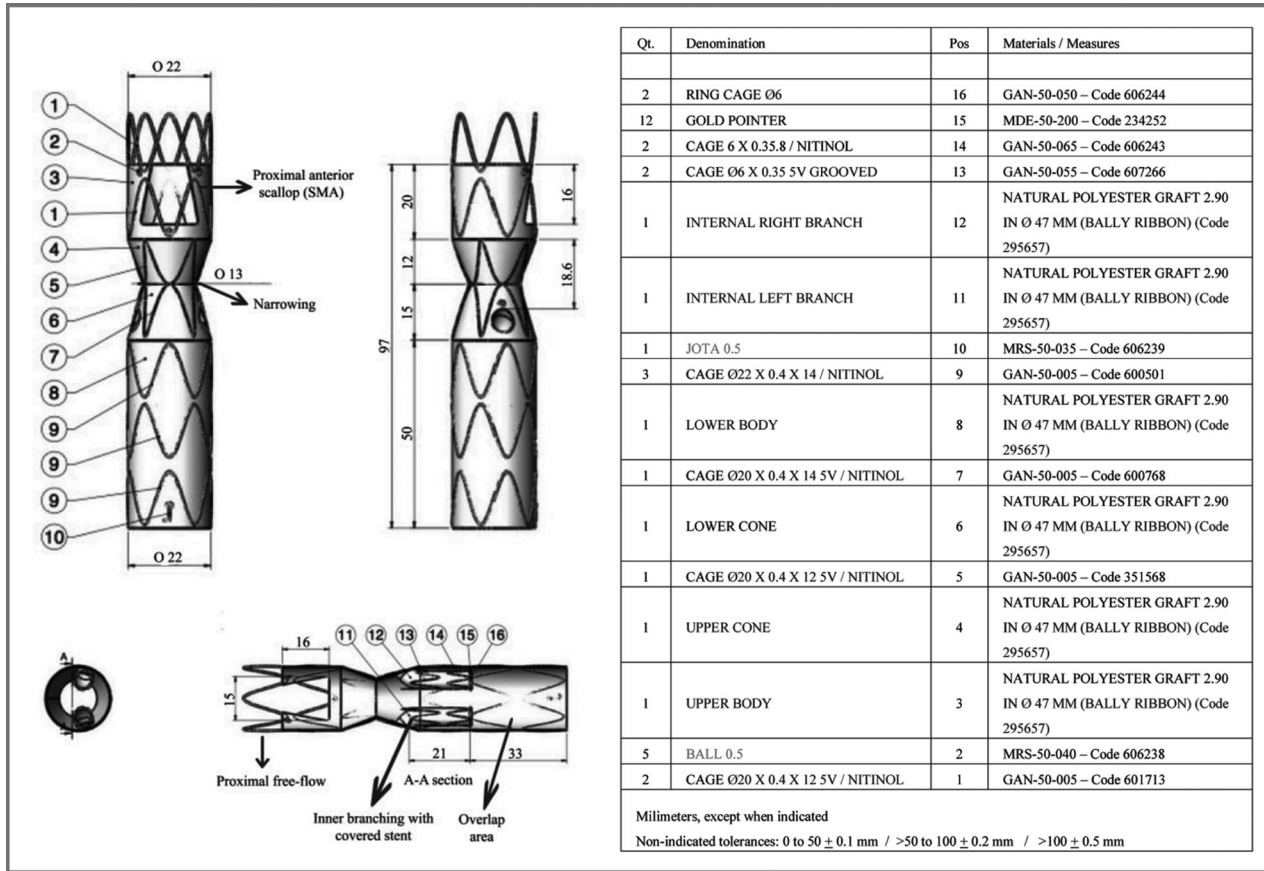


Figure 1 - Features of the projected Hourglass endograft.

Conventional surgery for JRA remains associated with high rates of morbidity and mortality. However, even for well-selected patients, most fenestrated or branched endografts must be customized to each patient, resulting in very difficult and expensive access to such technology. All of these issues highlight the need for new endovascular devices that are feasible for the treatment of JRA.

Based on this need, the objectives of the present study were as follows: 1) to analyze the angiotomographic parameters of patients with JRA; 2) to adjust a projected endograft model for JRA repair based on the angiotomographic analysis, 3) to create an in vitro model to assess the new endograft model, and 4) to test the new endograft in a newly created porcine model of JRA.

METHODS

Angiotomographic parameters

Angiotomographies of 49 patients with JRA (neck length <15 mm) treated between January 2009 and October 2013 were selected from the hospital registry, and the parameters below were analyzed using OsiriX image-processing freeware.

Parameters included the aortic diameter of the celiac trunk (CT), superior mesenteric artery (SMA), higher renal artery (HRA) and lower renal artery (LRA); angulations of the CT, SMA, right renal artery (RA), and left RA; longitudinal distances between the CT and the SMA, between the SMA and the HRA, and between the SMA and the LRA; and the length of the neck.

Each patient’s angiotomographic parameters were correlated using Pearson’s correlation coefficient. After

constructing a 95% confidence interval, descriptive measures were analyzed using Student’s t test. Statistical observations were used to assess the applicability of the projected endograft.

Projected endograft

The Hourglass endograft (Figure 1) was projected in partnership with Braile Biomédica (São Paulo, Brazil) based on several main principles, as follows:

- proximal free flow to increase the fixation area using an uncovered stent;
- inner branching to gain external area and to allow sufficient area for the apposition of a covered stent, avoiding endoleaks;
- a distal area functioning as a longer “neo-neck” of the aneurysm for overlap with a conventional endograft to treat infrarenal aneurysms;
- a proximal anterior scallop (in a half-moon shape) to maintain the patency of the SMA;
- hourglass-like narrowing (<35%) to create a good distance between the endograft and the aortic wall, allowing easier catheterization of the RAs, even if in different positions in both the anteroposterior and the inferosuperior directions.

In vitro model of JRA

An in vitro model of JRA was designed, as shown in Figure 2, and was manufactured using glass.

The projected endograft was tested in the in vitro model while employing a hemodynamic procedure, using the same

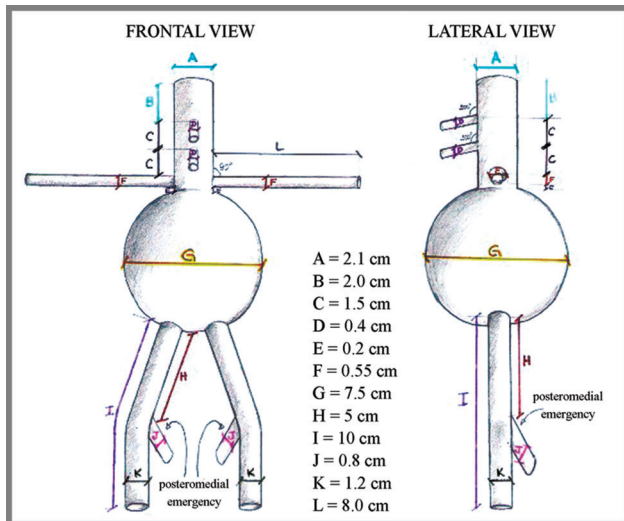


Figure 2 - Design of the in vitro model of juxtarenal aneurysm.

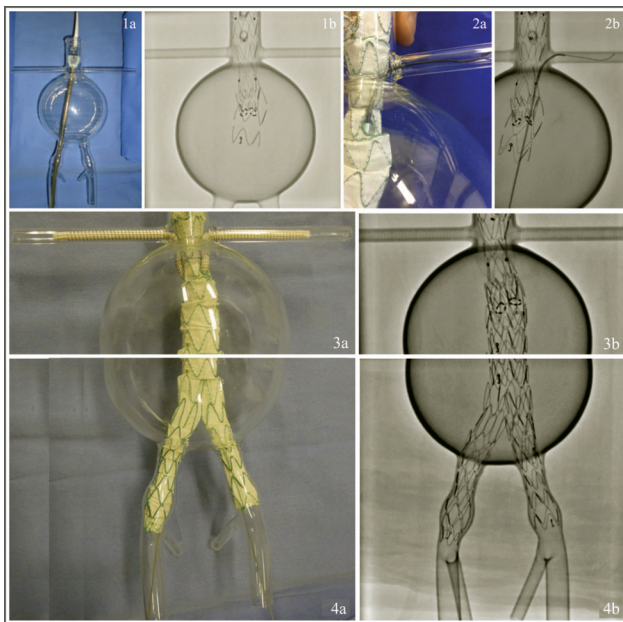


Figure 3 - Procedures for testing the Hourglass endograft in the in vitro model of juxtarenal aneurysm: (1) proximal deployment of the endograft; (2) RA catheterization; (3) final photographic image of the in vitro experiment; (4) final fluoroscopic image of the in vitro experiment.

materials as if treating a human being. After releasing the Hourglass endograft, the covered stents (Viabhan-GORE[®]) were placed in the RA, and a bifurcated endograft usually used for the treatment of infrarenal aneurysms was placed to complete the testing procedures (Figure 3). The functionality and radiopacity of the model and its adherence to the endograft material were then assessed.

Porcine model of JRA

An experimental model of JRA was created in six domestic white pigs weighing 50 kg to 60 kg (R.G. Grange, Mea Farm, Suzano, São Paulo, SP, Brazil). All pertinent

guidelines described by current Brazilian legislation (Decree 6,899/2009) on the use and protection of animals in experimental research were rigorously followed, and this study was approved by the Ethics Board in Scientific Research of the Medical School of São Paulo University (protocol number 431/11).

Three pigs were used in a pilot experiment, and the feasibility of the procedure, the catheterization of the RAs, and the patency and pressure rates were assessed before and after deploying the device. Based on this assessment, the endograft was adapted to the porcine model with an external covered fenestrated segment and was then placed in another three pigs and again assessed (Figure 4).

The animals were submitted to pre-anesthesia with intramuscular ketamine and midazolam. Anesthesia was induced with intravenous thiopental and maintained with continuous inhalation of halothane and intravenous fentanyl. Physiological breathing parameters were maintained with mechanical ventilation. Cardiac frequency, invasive arterial pressure and central venous pressure were continuously assessed until the animals were sacrificed.

RESULTS

The analysis of angiotomographic parameters revealed significant positive correlations among aortic diameter measurements at different locations (range: $r=0.71$ to $r=0.93$) and between the longitudinal SMA-HRA and SMA-LRA distances ($r=0.59$), indicating that variations in such parameters in each patient followed a very homogeneous pattern. No correlation was found for angulations or the other longitudinal distances, and the individual patterns of these variations were heterogeneous (Figure 5). Descriptive measures for all 49 patients are presented in Table 1.

According to these findings, the projected endograft was shown to be applicable in 85.8% of cases. The excluded cases were as follows: one patient with only one kidney, three patients presenting a polar artery, one patient with neck angulation $>45^\circ$, one patient with SMA angulation $>35^\circ$, and one patient with a longitudinal SMA-HRA distance <0.40 cm.

The in vitro model of JRA was shown to be functional and to have good radiopacity and optimal adherence to the endograft material, allowing adjustments of the projected endograft and technical improvements in the endovascular procedures.

In three procedures simulating the treatment of JRA, with durations of 42, 48 and 49 min, the covered stents were easily catheterized and released in the RA.

A porcine model of JRA was successfully achieved in all six pigs studied. The experimental procedures lasted 2 h 20 min, 1 h 55 min or 2 h 05 min and the necessary contrast volumes were 85 ml, 110 ml and 120 ml, respectively. During deployment of the adapted Hourglass endograft, difficult catheterization of the RA resulted from the posteriorization caused by the aneurysm model. The diameter prevented the release of the distal bifurcated endograft. Thrombosis of one covered stent was observed in the control angiogram, and endoleaks were not observed. Moreover, no difference was observed between the pressure rates measured before and after deploying the endograft. Figure 6 illustrates the results of the experimental procedure.

DISCUSSION

Conventional surgical treatment of JRA is a complex procedure associated with more risks than surgical treatment

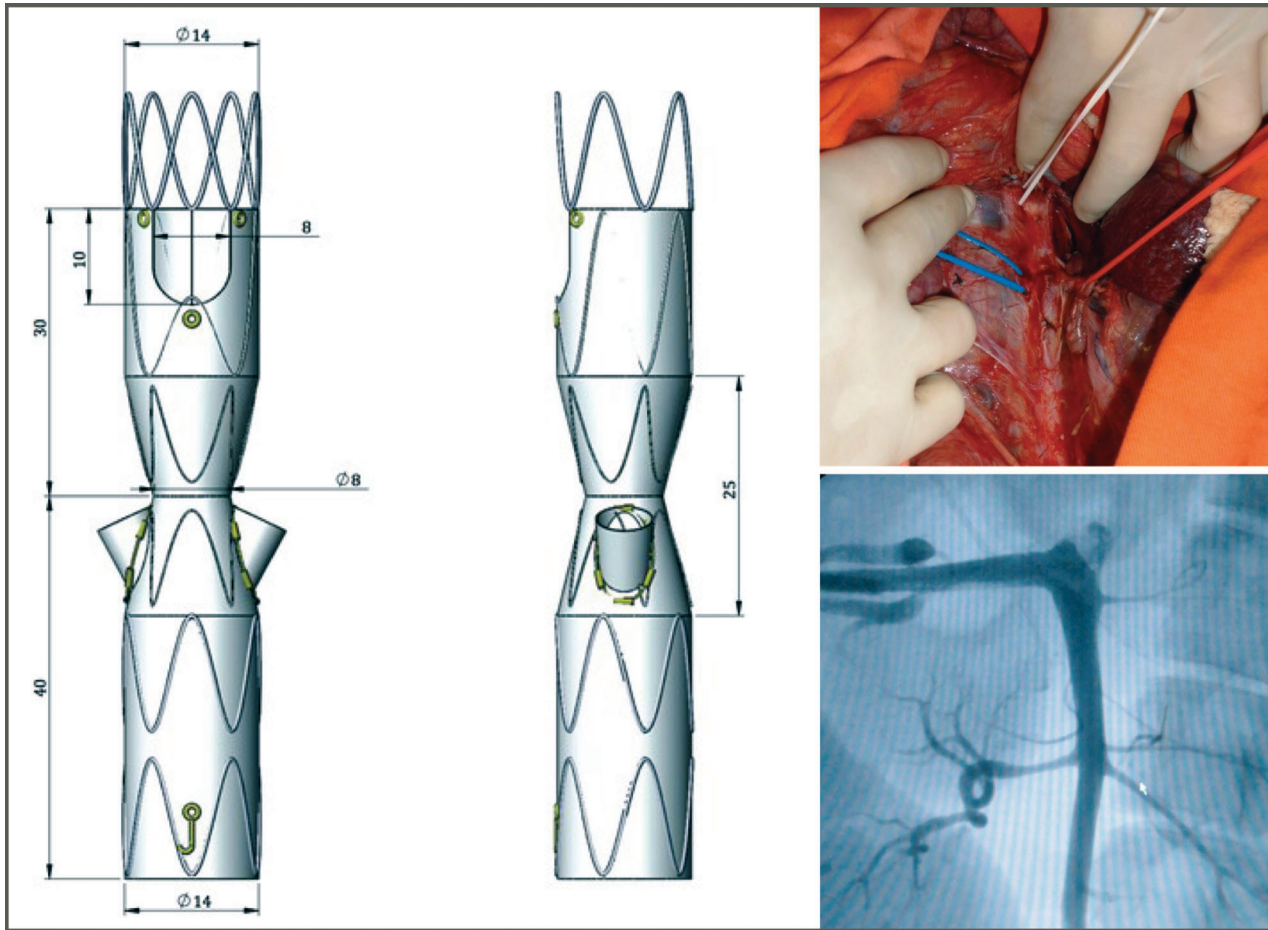


Figure 4 - Hourglass endograft adapted for placement in the porcine model of juxtarenal aneurysm (left) and images of an aortography in one pig (right).

of infrarenal aneurysms, especially considering postoperative renal morbidity. However, the success of endovascular treatment of abdominal aortic aneurysms is dependent on the site of proximal anchorage of the endograft, and approximately 30% of the cases are not eligible for EVAR with the currently available technologies because of unfavorable anatomy (6). Most recommendations refer to a proximal neck length ≥ 15 mm for adequate proximal anchorage of the endograft and cite proximal necks with a circumferential mural thrombus or with severe angulation $>60^\circ$ as a contraindication (5).

Several endovascular techniques have been developed in an attempt to repair JRA. The hybrid technique combines endograft deployment with occlusion of the entry of visceral arteries previously revascularized with grafts. However, the surgical stages are complex and long, causing significant morbidity and very variable results (9). In the chimney technique, the stent is placed through the external part of the endograft to pass through the vessel and restore the visceral flow, but such presentation of the stent in parallel with the endograft can result in endoleaks and in stenosis or occlusion of the stent (10).

Fenestrated and branched endografts were developed in an attempt to increase the use of endografts by possibly moving the anchorage area proximally to the RA; both types of endografts could be customized based on imaging studies (10)

but were expensive and require an extended period of time to be customized and prepared, delaying repair and thus limiting their use (9). In most cases, catheterization of the visceral branches through the orifices or branches represented a critical challenge, requiring considerable time and effort, even for expert surgeons. Such difficulty has been minimized with the use of new endografts developed to be deployed through guide wires, which have previously been used to catheterize the visceral vessels (11). Furthermore, the success of deploying fenestrated and branched endografts is dependent on the planned placement of the orifices or branches because there is wide variation in the anatomy of the visceral arteries emerging at the aorta. Considering the most ventral point of the aorta to be at 12:00, a scallop fixed at 12:00 for the SMA, fenestration for the left RA oscillating between 9:15 and 10:15, and fenestration for the right RA oscillating between 2:15 and 3:15 have already been observed in a set of 439 customized endografts (12). The distance between the origin of the orifice of the RA and the proximal end of the endograft ranged from 19 mm to 28 mm. Although such data were collected while developing customized endografts (12), they also indicate the usefulness of measuring certain parameters in a large number of angiotomographies to characterize the emergence of visceral arteries at the aorta and to thus aid the development of new, more adequate endografts to be used in the treatment of JRA.



The Hourglass endograft presented in the present study was projected without requiring the proximal neck for its fixation. For this purpose, the endograft had a proximal scallop at 12:00 for the SMA and two small inner branches for the RA, with lateral exits for the deployment of covered stents. Considering the variations in the positions of RA emergences, the endograft was hourglass shaped in the small-branch segments to allow angulation of the covered stent that catheterized the RA.

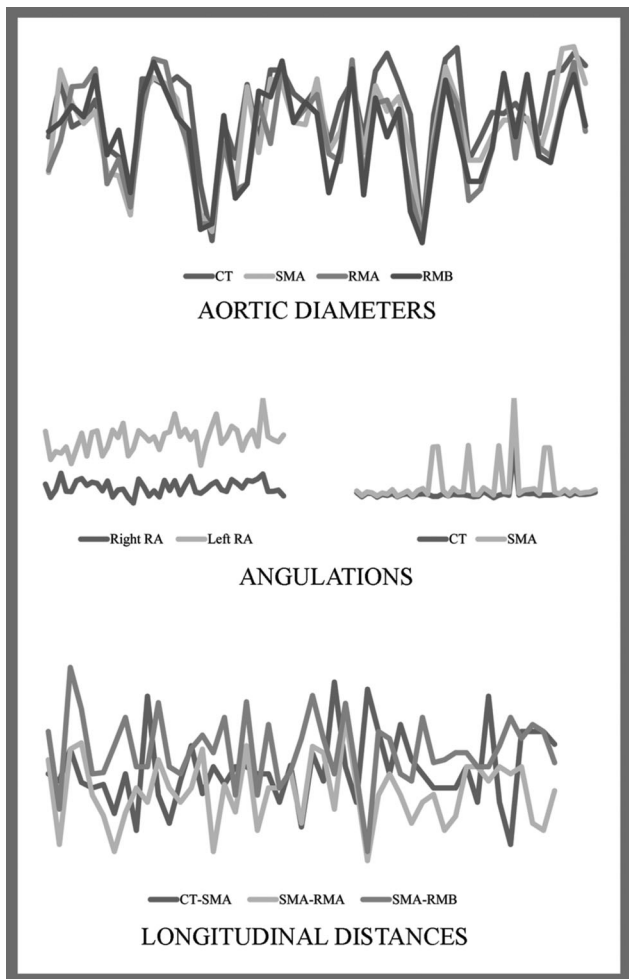


Figure 5 - Illustrative representation of the dispersive measures of the angiotomographic parameters of 49 patients with juxtarenal aneurysm.

The angiotomographic parameters evaluated in this study were consistent with those reported in the literature. Regarding the angulation of the origin of the visceral arteries, Ferreira et al. (13) reported similar measures when developing 21 branched stent grafts for the repair of thoracoabdominal aneurysms in high-risk patients. The longitudinal CT-SMA and SMA-HRA distances in the current study were also very similar to those reported by Takahashi et al. (14) in a study using 20 cadavers to clarify the positional relationships between the CT, the SMA, and the RA. Using these parameters, we confirmed the applicability of the Hourglass endograft in 85.8% of the 49 patients with JRA who were submitted to angiotomographic assessment.

The in vitro model created specifically to test and adjust the Hourglass endograft seems to be the first reported model of JRA in glass. Several authors have already reported the use of an aortic model in glass in studies regarding staged endovascular treatment for complicated type B dissection (15), flow velocity and turbulence in the transverse aorta of a proximally directed aortic cannula (16), staged proximal deployment of thoracic stent grafts (17), the experimental fluid dynamics of transventricular apical aortic cannulation (18), and the hydrodynamics of aortic cannulas during extracorporeal circulation (19). Berger et al. (20) also proposed a dry glass model of the abdominal aorta and its tributaries with various stenoses, elongations, and tortuosities, named the STRESS machine, to test the endovascular skills of vascular surgeons.

Using a glass model of JRA that was created to test the Hourglass endograft, covered stents were easily catheterized and released in the RA in the current study. The functionality and radiopacity of this glass model and its optimal adherence to the endograft material allowed for certain adjustments to the Hourglass endograft, indicating its usefulness in making future technical improvements in endovascular procedures.

The development of a new endograft requires in vivo assessment. Several techniques for creating experimental aneurysms in vivo have been reported in the literature, including genetic induction, interposition graft use, transluminal dilatation, and infusion of substances such as elastase. Patch deployment is the most frequently used model because it is simple to perform, fast and secure (21,22). To date, however, we have not found any published reports regarding models of JRA or thoracoabdominal aneurysms.

The porcine model of JRA presented here was developed to assess the Hourglass endograft and was successfully implemented in six animals, and the feasibility of the endograft was demonstrated (Figure 6). Deployment of the

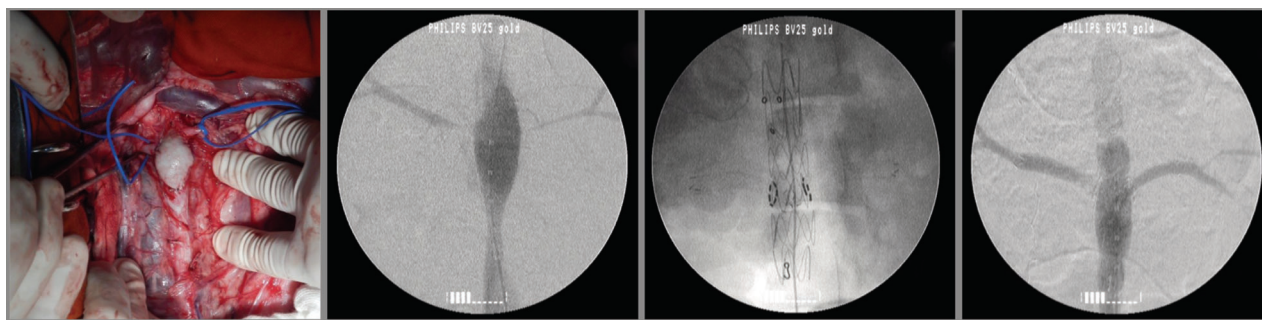


Figure 6 - Images of the experimental treatment of an in vivo porcine model of juxtarenal aneurysm with the Hourglass endograft.



Table 1 - Descriptive measures of the angiotomographic parameters of 49 patients with juxtarenal aneurysm.

Parameter		Descriptive measures				
		Minimum	Maximum	Mean	Standard deviation	Median
Aortic diameters	CT	1.38	3.11	2.55	0.40	2.62
	SMA	1.40	3.12	2.41	0.41	2.45
	RMA	1.41	3.01	2.34	0.44	2.32
	RMB	1.36	2.99	2.34	0.43	2.41
Angulations	CT	1.72	351.28	29.64	48.34	24.11
	SMA	1.10	352.24	64.08	117.42	18.48
	Right RA	266.77	321.97	296.03	12.79	292.63
	Left RA	36.89	137.66	89.72	21.77	94.34
Longitudinal distances	CT-SMA	0.40	2.70	1.45	0.51	1.40
	SMA-HRA	0.17	2.20	1.15	0.46	1.20
	SMA-LRA	0.30	2.91	1.74	0.47	1.70
Length of neck		0.01	1.41	0.70	0.42	0.73

JRA: juxtarenal aneurysm; CT: celiac trunk; SMA: superior mesenteric artery; HRA: higher renal artery; LRA: lower renal artery; RA: renal artery.

new endograft occurred with certain expected difficulties related to porcine anatomy, but endoleaks were not observed in the imaging studies. Thrombosis of a covered stent was also observed in the control angiogram in one case.

The development of the Hourglass endograft allowed us to create feasible in vitro and in vivo models of JRA. Because the angiotomographic parameter analysis revealed the applicability of this endograft to more than 80% of the patients involved in the study, the next steps include more in vitro testing using a pressurized system and assessment of both its feasibility and potential technical improvements in the procedure using cadavers. After such analysis, a protocol will be developed for use in human beings, affording the opportunity to treat patients with JRA in a faster, cheaper and more secure way.

CONFLICT OF INTEREST

The endografts and covered Viabhan[®] stents used in the study were donated by Braile-Biomedica[®] and GORE[®], respectively.

AUTHOR CONTRIBUTIONS

Belczak SQ and Silva ES participated in the new endograft design and in vitro and in vivo model conception, development and procedures. Botelho Y collected the data. Belczak SQ analyzed the data. Belczak SQ, Lanzioti L, Botelho Y, Aun R, Silva ES, Puech-Leão P, and de Luccia N participated in the writing, review and approval of the manuscript.

REFERENCES

- Jongkind V, Yeung KK, Akkersdijk GJM, Heidsieck D, Reitsma JB, Tangelder GJ, et al. Juxtarenal aortic aneurysm repair. *J Vasc Surg.* 2010; 52(3):760-7, <http://dx.doi.org/10.1016/j.jvs.2010.01.049>.
- Sarac TP, Clair DG, Hertzner NR, Greenberg RK, Krajewski LP, O'Hara PJ, et al. Contemporary results of juxtarenal aneurysm repair. *J Vasc Surg.* 2002;36(6):1104-11, <http://dx.doi.org/10.1067/mva.2002.129638>.
- Chiesa R, Marone EM, Briochi C, Frigerio S, Tshomba Y, Melissano G. Open repair of pararenal aneurysms: operative management, early results, and risk factor analysis. *Ann Vasc Surg.* 2006;20(6):739-46, <http://dx.doi.org/10.1007/S10016-006-9134-8>.
- Ontario Health Technology Advisory Committee. Fenestrated endovascular grafts for the repair of juxtarenal aortic aneurysms: an evidence-based analysis. Ontario Health Technology Assessment Series. 2009;9:1-51.
- United Kingdom EVAR Trial Investigators, Greenhalgh RM, Brown LC, Powell JT, et al. Endovascular versus open repair of abdominal aortic aneurysm. *N Engl J Med.* 2010;362(20):1863-71, <http://dx.doi.org/10.1056/NEJMoa0909305>.
- The British Society for Endovascular Therapy and the Global Collaborators on Advanced Stent-Graft Techniques for Aneurysm Repair (GLOBALSTAR) Registry. Early results of fenestrated endovascular repair of juxtarenal aortic aneurysms in United Kingdom. *Circulation.* 2012; 125(22):2707-15, <http://dx.doi.org/10.1161/CIRCULATIONAHA.111.070334>.

- Belczak SQ, Lanzioti L, Botelho Y, Aun R, Silva ES, Puech-Leão P, et al. Open and endovascular repair of juxtarenal abdominal aortic aneurysms: a systematic review. *Clinics.* 2014; 69(9):641-6, <http://dx.doi.org/10.6061/clinics>.
- Lederle FA, Freischlag JA, Kyriakides TC, Matsumura JS, Padberg FT Jr, Kohler TR, et al. Long-term comparison of endovascular and open repair of abdominal aortic aneurysm. *New Eng J Med.* 2012;367(21):1988-97, <http://dx.doi.org/10.1056/NEJMoa1207481>.
- Verhoeven EL, Vourliotakis G, Bos WTGJ, Tielliu IFJ, Zeebregts CJ, Prins TR, et al. Fenestrated stent grafting for short-necked and juxtarenal abdominal aortic aneurysms: an 8-year single-center experience. *Eur J Vasc Endovasc Surg.* 2010;39(5):529-36, <http://dx.doi.org/10.1016/j.ejvs.2010.01.004>.
- Donas KP, Eisenack M, Panuccio G, AUstermann M, Osada M, Torsello G. The role of open and endovascular treatment with fenestrated and Chimney endografts for patients with juxtarenal aortic aneurysms. *J Vasc Surg.* 2012;56(2):285-290, <http://dx.doi.org/10.1016/j.jvs.2012.01.043>.
- Knott AW, Kalra M, Duncan AA, Reed NR, Bower TC, Hoskin TL, et al. Open repair of juxtarenal aortic aneurysms (JAA) remains a safe option in the area of fenestrated endografts. *J Vasc Surg.* 2008;47(4):695-701, <http://dx.doi.org/10.1016/j.jvs.2007.12.007>.
- Manning BJ, Hinchcliffe RJ, Ivancev K, Harris PL. Ready-to-fenestrate stent grafts in the treatment of juxtarenal aortic aneurysms: proposal for an off-the-shelf device. *Eur J Vasc Surg.* 2010;39(4):431-5, <http://dx.doi.org/10.1016/j.ejvs.2010.01.012>.
- Ferreira M, Lanzioti L, Monteiro M. Branched devices for thoracoabdominal aneurysm repair: early experience. *J Vasc Surg.* 2008;48(6 Suppl):305-36S; discussion 36S, <http://dx.doi.org/10.1016/j.jvs.2008.08.096>.
- Takahashi T, Takeuchi K, Ito T, Itoh M. Positional relationships among the celiac trunk, superior mesenteric artery, and renal artery observed from the intravascular space. *Surg Radiol Anat.* 2013;35(5):411-7, <http://dx.doi.org/10.1007/s00276-012-1054-4>.
- Mossop PJ, McLachlan CS, Amukotuwa SA, Nixon IK. Staged endovascular treatment for complicated type B aortic dissection. *Nat Clin Pract Cardiovasc Med.* 2005;2(6):316-21; quiz 322.16.
- Fukuda I, Fujimori S, Daitoku K, Minakawa M, Daitoku K, Suzuki Y. Flow velocity and turbulence in the transverse aorta of a proximally directed aortic cannula: hydrodynamic study in a transparent model. *Ann Thorac Surg.* 2009;87(6):1866-71, <http://dx.doi.org/10.1016/j.athoracsurg.2009.03.054>.
- Kölbl T, Resch TA, Dias N, Björnsen K, Sonesson B, Malina M. Staged proximal deployment of the Zenith TX2 thoracic stent-graft: a novel technique to improve conformance to the aortic arch. *J Endovasc Ther.* 2009;16(5):598-602, <http://dx.doi.org/10.1583/09-2787.1>.
- Fukuda I, Yanaoka H, Inamura T, Minakawa M, Daitoku K, Suzuki Y. Experimental fluid dynamics of transventricular apical aortic cannulation. *Artif Organs.* 2010;34(3):222-4, <http://dx.doi.org/10.1111/j.1525-1594.2009.00846.x>.
- Minakawa M, Fukuda I, Igarashi T, Fukui K, Yanaoka H, Inamura T. Hydrodynamics of aortic cannulae during extracorporeal circulation in a mock aortic arch aneurysm model. *Artif Organs.* 2010;34(2):105-12, <http://dx.doi.org/10.1111/aor.2010.34.issue-2>.
- Berger P, Willems MC, Van Der Vliet JA, Schultze Kool LJ, Bergqvist D, Blankensteijn JD. Validation of the Simulator for Testing and Rating Endovascular Skills (STRESS)-machine in a setting of competence testing. *J Cardiovasc Surg (Torino).* 2010;51(2):253-6.
- Argenta R, Pereira AH. Modelos animais de aneurisma de aorta. *J Vasc Bras.* 2009;8(2):148-53, <http://dx.doi.org/10.1590/S1677-54492009000200009>.
- França LHG, Pereira AH, Perini SC, Aveline CC, Pereira AH, Mollerke RO, et al. Modelo experimental de aneurisma sacular de artéria ilíaca comum com pericárdio bovino em suínos. *J Vasc Bras.* 2005;4(4):353-56, <http://dx.doi.org/10.1590/S1677-54492005000400010>.



Errata

In the article **Developing a new endograft for the treatment of juxtarenal aortic aneurysm: definition and experimentation** published in CLINICS 2015;70(6), on pages 435 and 440, where it reads:

“Lanzaiotti”

it should read:

“Lanziotti”