


# Trypanorhynch cestodes parasitizing *Mugil liza* (Mugiliformes: Mugilidae) commercialized in the state of Rio de Janeiro, Brazil

Cestoides Trypanorhyncha parasitando *Mugil liza* (Mugiliformes: Mugilidae) comercializados no estado do Rio de Janeiro, Brasil

João Victor Ferreira de Oliveira<sup>1</sup>; Bianca Porto Kuraieim<sup>2</sup>; Michelle Cristie Gonçalves da Fonseca<sup>1</sup>; Delir Corrêa Gomes<sup>1</sup>; Marcelo Knoff<sup>1\*</sup> 

<sup>1</sup> Laboratório de Helminthos Parasitos de Vertebrados, Instituto Oswaldo Cruz, Fundação Oswaldo CRUZ – FIOCRUZ, Rio de Janeiro, RJ, Brasil

<sup>2</sup> Laboratório de Inspeção e Tecnologia do Pescado, Faculdade de Medicina Veterinária, Universidade Federal Fluminense – UFF, Niterói, RJ, Brasil

Received April 12, 2019

Accepted May 10, 2019

## Abstract

The aim of the present study was to identify, through morphological and morphometric analyses, the species of trypanorhynch cestodes found as plerocerci in the intestinal serosa of *Mugil liza* and to determine their parasitic indices. One hundred and fifty specimens of this mullet collected off the coast of the state of Rio de Janeiro were necropsied and the trypanorhynch cestodes found were fixed and preserved as whole mounts for morphological analysis. The plerocerci were identified as *Callitetrarhynchus gracilis* and *Pterobotrium crassicole*, both with a prevalence of 0.67%, an intensity of 1 and abundance of 0.0067, in single infections. This is the first record of a trypanorhynch cestode parasitizing *M. liza* in Brazil. Although the parasitic indexes were low, from a hygienic-sanitary perspective the plerocerci of these species are visible to the naked eye, and thus can disgust consumers and make marketing the fish unfeasible.

**Keywords:** *Pterobotrium crassicole*, *Callitetrarhynchus gracilis*, *Mugil liza*, Brazil.

## Resumo

O presente estudo objetivou determinar taxonomicamente as espécies de plerocercos de cestoides Trypanorhyncha encontradas na serosa intestinal das tainhas *Mugil liza*, através do estudo morfológico e morfométrico e indicar seus índices parasitários. Foram coletados 150 espécimes desta espécie de tainha do litoral do estado do Rio de Janeiro. Após as necropsias, os cestoides Trypanorhyncha encontrados foram fixados e preservados em montagens permanentes para permitir a análise de suas estruturas morfológicas. Os plerocercos foram identificados como *Callitetrarhynchus gracilis* e *Pterobotrium crassicole* e ambas as espécies apresentaram prevalência de 0,67%, intensidade de 1 e abundância de 0,0067, em infecções únicas. Este é o primeiro registro de cestoides Trypanorhyncha parasitando *M. liza* no Brasil. Quanto ao aspecto higiênico-sanitário, vale ressaltar que, embora os índices parasitários registrados tenham sido baixos, os plerocercos dessas espécies estavam visíveis a olho nu, podendo causar repugnância ao consumidor e inviabilizar a comercialização do pescado.

**Palavras-chave:** *Pterobotrium crassicole*, *Callitetrarhynchus gracilis*, *Mugil liza*, Brasil.

Mullets are a group of great economic importance both for fishing and aquaculture (CROSETTI, 2016). In 2014, the global production of mullets was 728,546 tonne, of which 140,187 tonne (19.24%) were produced by aquaculture (FAO, 2016). The mullet *Mugil liza* Valenciennes, 1836, is widely distributed along the Atlantic coast of South America from Venezuela to Argentina

(MENEZES et al., 2010). The species is an important economic resource that supports many small communities through both fishing and aquaculture. *Mugil liza* is abundant in the western South Atlantic and has a great consumer market (REIS & D'INCAO, 2000; SILVA & ARAÚJO, 2000; KATSELIS et al., 2005; PINA & CHAVES, 2005). The state of Rio de Janeiro is the most important producer of *M. liza* in Southeast Brazil, producing more than 1,405 ton/year, mainly from artisanal catches (BRASIL, 2007).

Fish parasites are a major component of marine biodiversity, with cestodes playing a significant role in aquatic environments

\*Corresponding author: Marcelo Knoff. Laboratório de Helminthos Parasitos Vertebrados, Instituto Oswaldo Cruz, Fundação Oswaldo Cruz – FIOCRUZ, Avenida Brasil, 4365, Mangueinhos, CEP 21040-900, Rio de Janeiro, RJ, Brasil. e-mail: [knoffm@ioc.fiocruz.br](mailto:knoffm@ioc.fiocruz.br)



(ROHDE, 2005; KURIS et al., 2008). These parasites can be used as biological indicators for fish stock separation (PALM, 1999; MALEK, 2004; MACKENZIE et al., 2008), and have been used as an early warning system to monitor pollution and environmental degradation (THIELEN et al., 2004; MARCOGLIESE, 2005).

The order Trypanorhyncha Diesing, 1863, is a cosmopolitan group of marine cestodes with more than 270 recorded species, they are parasites of marine fish and invertebrates, especially in tropical and subtropical regions, with adult worms living in the intestine of an elasmobranch final host, while the larval forms are found in crustaceans and mollusc cephalopods, and musculature, coelomic cavity, mesentery and visceral serosa of teleosts (CAMPBELL & BEVERIDGE, 1994; KNOFF et al., 2002; PALM, 2004, 2010; PALM et al., 2009). Trypanorhynch cestodes, such as *Callitetrarhynchus gracilis* (Rudolphi, 1819) Pintner, 1931, and *Pterobothrium crassicole* Diesing, 1850, are of hygienic-sanitary importance due to their repugnant aspect, this is particularly true when teleostean fish have massive infections in their musculature and organs, which can make commercialization infeasible due to sanitary inspection and/or rejection by the consumer, thus resulting in economic losses (KURAIEM et al., 2016; ZUCHINALLI et al., 2016).

Some trypanorhynch species, such as *Gymnorhynchus gigas* (Cuvier, 1817) Rudolphi, 1819, have larvae with antigenic components that are able to cause anaphylactic episodes (RODERO & CUELLAR, 1999). Vázquez-López et al. (2002) showed that proteins of *G. gigas* may alter motility and intestinal transit. By means of inoculation, Mattos et al. (2013) demonstrated that the molecules of the gross extracts of *Pterobothrium heteracanthum* Diesing, 1850, are capable of inducing the production of specific IgE and IgG, thus inducing an allergic reaction in murine models.

Several recent studies have aimed to elucidate the biology of species of *Callitetrarhynchus* and *Pterobothrium* that parasitize several species of fish along the Brazilian coast, with publications on taxonomy, parasite ecology, and hygienic-sanitary approaches (CORDEIRO & LUQUE, 2004; SÃO CLEMENTE et al., 2004, 2007; PEREIRA & BOEGER, 2005; ALVES & LUQUE, 2006; PINTO et al., 2006; LUQUE et al., 2008; DIAS et al., 2009, 2010, 2011; OLIVEIRA et al., 2009; PORTO et al., 2009; FELIZARDO et al., 2010; FONSECA et al., 2012; KURAIEM et al., 2016; ZUCHINALLI et al., 2016; MENEZES et al., 2018).

The present study represents a continuation of previous surveys of the metazoans and protozoans found in *M. liza* (= *M. platanus*) (OLIVEIRA et al., 1988; KNOFF & AMATO, 1991, 1992; KNOFF & SERRA-FREIRE, 1993; KNOFF et al., 1994, 1997; KNOFF & BOEGER, 1994). The aim was to identify species of trypanorhynch cestodes found in *M. liza* through the analysis of morphological and morphometric characters, and to determine and present their parasitic indices of prevalence, intensity and abundance.

A total of 150 specimens of *M. liza* measuring 35.5-59.5 cm (47.5 ± 16.97 cm) standard length, and weighing 600-3600 g (2100 ± 2121.32 g) that were caught between June 1984 and August 1988 by professional fishermen through artisanal fishing off the coast of the state the Rio de Janeiro, Brazil (22°54'13"S, 43°12'35"W) were analyzed. The hosts were carried in isothermal boxes to the Laboratório de Ictioparasitologia, Universidade Federal

Rural do Rio de Janeiro. The host specimens were identified in accordance with Menezes & Figueiredo (1985) and Froese & Pauly (2018). After necropsy, musculature was transferred to Petri dishes containing physiological solution with 0.65% NaCl. Cestode blastocysts were removed from the musculature for further investigation. Trypanorhynch plerocerci were transferred into distilled water and the cysts of plerocerci opened (under a stereomicroscope using sharp needles) to release the larvae, which were then refrigerated for at least 24 h to permit relaxation of scolices and tentacular extroversion. All larvae were fixed in cold AFA, stained with Langeron's carmine, dehydrated in an increasing alcoholic series, clarified in beechwood creosote and preserved as whole mounts in Canada balsam (AMATO et al., 1991). Taxonomic classification followed Cairá & Jensen (2017), while species identification followed Palm (2004). Photographs and measurements (in millimeters) were obtained from uncompressed specimens using bright field microscopy with an Olympus BX 41 microscope, unless otherwise indicated. Measurements are provided as means with ranges in parenthesis. Prevalence, intensity, and abundance indexes were calculated following Bush et al. (1997). Representative specimens of the parasites were deposited in the Coleção Helmintológica do Instituto Oswaldo Cruz (CHIOC), Rio de Janeiro, Brazil.

One larval cestode was found on the intestine serosa of each of two of the 150 specimens of *M. liza* necropsied. The specimens are of different species, which are taxonomically identified as follows.

Trypanoselachoida *sensu* Beveridge, Haseli, Ivanov, Menoret & Schaeffner, 2017.

Lacistorhynchoidea Guiart, 1927

Lacistorhynchidae Guiart, 1927

*Callitetrarhynchus* Pintner, 1931

*Callitetrarhynchus gracilis* (Rudolphi, 1819) Pintner, 1931 (Figures 1 and 2)

Observed features of the specimen: plerocercus with blastocyst, appendix present. Scolex elongated, thin and acraspedote. Two pattelform bothria, notched posterior margin. Pars vaginalis long, tentacle sheaths regularly sinuous, less sinuous in the region of the pars bothrials. Bulbs elongated. Retractor muscles originate at the anterior 1/3 of bulbs. Pars postbulbosa absent. Principal rows of metabasal armature poeciloacanthous, heteromorphous, forming alternating half-spirals of eight principal hollow hooks, beginning on internal surface. Hooks 1(1') large and uncinata. Hooks 2(2') uncinata and largest. Hooks 3(3') falciform, large with large bases. Hooks 4(4') and 5(5') falciform. Hooks 6(6') spiniform, near external surface. Hook 7(7') elongate, s-shaped, larger than hook 8(8'). Hook 8(8') slender uncinata. A simple chainette ch (ch') is present.

Morphometrics provided in Table 1.

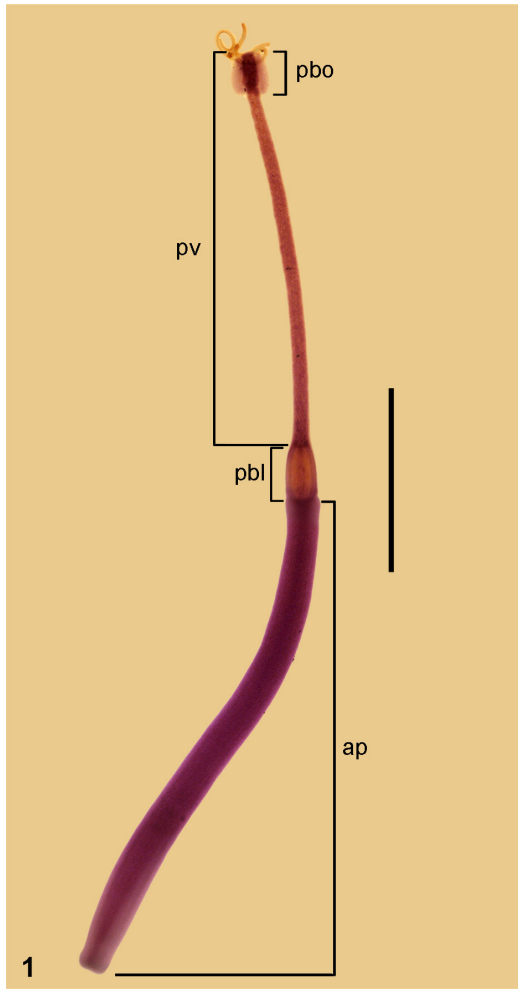
Parasitic indexes: prevalence 0.67%; intensity 1; abundance 0.0067.

Specimen deposited in CHIOC under the number 39063.

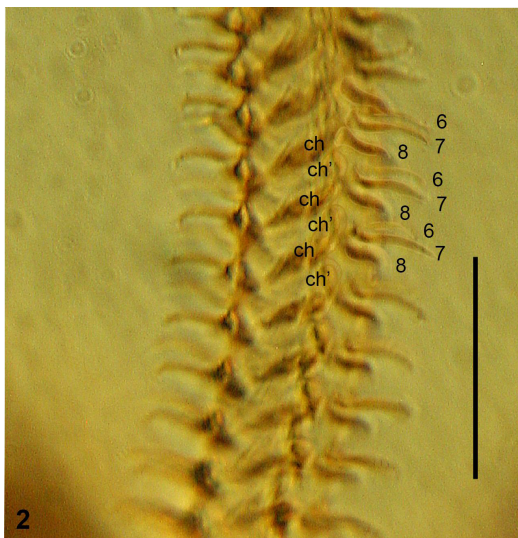
Grillotiidae Dollfus, 1969 and Pterobothriidae Pintner, 1931 clade *sensu* Beveridge, Haseli, Ivanov, Menoret & Schaeffner, 2017  
*Pterobothrium* Diesing, 1850

*Pterobothrium crassicole* Diesing, 1850 (Figures 3 and 4)

Observed features of the specimen: plerocercus with blastocyst. Scolex elongate, acraspedote. Four pyriform bothria on mobile



**Figure 1.** *Callitetrarhynchus gracilis* from *Mugil liza*. Entire plerocercus, pars bothrialis (pbo), pars vaginalis (pv), pars bulbosa (pbl) and appendix (ap). Scale bar = 1 mm.



**Figure 2.** *Callitetrarhynchus gracilis* plerocercus from *Mugil liza*. Detail of the external surface hooks arrangement of the metabasal armature tentacle, showing the 6, 7 and 8 hooks and chainette (ch and ch'). Scale bar = 50 µm.

**Table 1.** Morphometric data for *Callitetrarhynchus gracilis* and *Pterobotrium crassicole* plerocerci collected from *Mugil liza* off the coast of the state of Rio de Janeiro, Brazil.

	<i>Callitetrarhynchus gracilis</i>	<i>Pterobotrium crassicole</i>
Scolex (L)	2.46	5.17
Appendix (L)	2.82	—
Appendix (W)	0.22	—
Pars bothrialis (L)	0.22	0.72
Pars bothrialis (W)	0.15	1.17
Pars vaginalis (L)	2.12	3.37
Pars vaginalis (W)	0.12	0.37
Pars bulbosa (L)	0.34	1.35
Pars bulbosa (W)	0.15	0.60
Bulbs (L)	0.29 - 0.31 (0.30)	1.13 - 1.33 (1.22)
Bulbs (W)	0.07 - 0.08 (0.07)	0.23 - 0.26 (0.25)
Pars postbulbosa	—	0.62
Tentacles (L)	0.10 - 0.75 (0.32)	0.77 - 1.65 (1.09)

Measurements are in millimeters, means in parentheses. L= length; W= width.



**Figure 3.** *Pterobotrium crassicole* from *Mugil liza*. Entire plerocercus, pars bothrialis (pbo), pars vaginalis (pv), pars bulbosa (pbl) and pars postbulbosa (ppb). Scale bar = 1 mm.





**Figure 4.** *Pterobotrium crassicole* plerocercus from *Mugil liza*. Detail of the tentacles, shown external surface intercalary microhooks to principal hooks (arrow), and swelling present on the distinctive basal armature tentacle (arrowhead). Scale bar = 250  $\mu$ m.

pedicels in a cruciform arrangement. Pedunculus scolecis subcylindrical, narrower than pars bothrials. Principal rows of metabasal armature forming alternating half-spirals of five large heteromorphous, hollow hooks; small interpolated hooks between principal rows on bothrial and antibothrial surfaces. Distinctive basal armature and swelling present on internal and external tentacle surface, macrohooks present on internal surface; asymmetrical basal swelling of tentacle present. Hooks 1(1') widely separated, falciform in proximal region, becoming smaller, stout and uncinat distally. Hooks 2(2') falciform, decreasing in size in distal metabasal region, heel gradually enlarging, toe gradually disappears. Hooks 3(3') falciform with short base and heel, gradually decreasing in size distally. Hooks 4(4') and 5(5') of proximal 12 rows digitiform, hooks 4(4') become falciform at row 13, hooks 5(5') remain digitiform along the entire file, markedly reducing in length in the apical region, heel and toe absent, falcate with pointed tips. Intercalary rows present proximal to each principal row; intercalary rows extend onto external surface to merge with band of hooks occupying midline of external surface of tentacle. Tentacle sheaths sinuous. Bulbs elongate. Pars postbulbosa present.

Morphometrics provided in Table 1.

Parasitic indexes: prevalence 0.67%; intensity 1; abundance 0.0067.

The specimen was deposited in CHIOC under the number 39062.

The morphology and morphometry described for *C. gracilis* in the present study is in accordance with the redescrptions of Carvajal & Rego (1985), São Clemente (1986), Palm (2004), and Menezes et al. (2018). Plerocerci of *C. gracilis*, like that found in the present study, have been reported parasitizing teleost fish in other countries and regions of the world such as Japan, Australia, Indonesia, Phillipines, Sri Lanka, India, Pakistan, Arabian Gulf, Egypt, Mozambique, Madagascar, South Africa, Namibia, Nigeria, Guinea, Senegal, Mauritania, Morocco, France, Italy, Atlantic and Pacific Coasts of the USA, including Hawaii, Gulf of Mexico, Bermuda, Cuba, Venezuela, Peru and Panama

(PALM, 1997, 2004; PALM & BRAY, 2014), and have been reported to exhibit a characteristic size range within the different hosts, which is in agreement with the suggestion of Palm (1997, 2004) that *C. gracilis* participates in a life-cycle with a four-host trophical web. The specimen of *C. gracilis* reported in the present study is similar to large plerocerci parasitizing some teleost fish from Brazil and other countries reported by Palm (1997, 2004) and Menezes et al. (2018).

The morphology and morphometry of the *P. crassicole* specimen of the present study is in accordance with description of São Clemente (1986) for *Pterobotrium* sp. (= *P. crassicole*); the redescrptions of Rego (1987), Campbell & Beveridge (1996), and Palm (2004); and the recent report of Zuchinalli et al. (2016).

The recovery of the trypanorhynchs *C. gracilis* and *P. crassicole* from specimens of *M. liza* in the present study represent the first time these parasite species have been documented infecting Brazilian mullets. There has only been one previously unidentified trypanorhynch species reported for *Mugil curema* Valenciennes, 1836, from local markets on Itamaracá Island and at Itapissuma, Northeast Brazil (PALM, 1997). Furthermore, these two species have been reported parasitizing Brazilian teleost and elasmobranch marine fishes (FONSECA et al., 2012; FELIZARDO et al., 2018), being now also reported to the Mugilidae family.

From a hygienic-sanitary perspective, although the parasitic indexes for the two recovered species were low, their plerocerci are visible to the naked eye, which can disgust consumers and make marketing the fish unfeasible.

## Acknowledgements

The authors would like to thank Mr. Ricardo Baptista Schmidt (Serviço de Produção e Tratamento de Imagens do Instituto Oswaldo Cruz/FIOCRUZ) for processing the figures. To the Centro de Integração Empresa-Escola (CIEE), Coordenação de Aperfeiçoamento de Pessoal de Nível Superior (CAPES) and Conselho Nacional de Desenvolvimento Científico e Tecnológico (CNPq), Brazil for the support and the fellowship that enabled this research. This work was supported by fellowships CIEE grant numbers JVFO: 7573867 and CNPq grant numbers MCGF: 150140/2018-5.

## References

- Alves DR, Luque JL. Ecologia das comunidades de metazoários parasitos de cinco espécies de escombrídeos (Perciformes: Scombridae) do litoral do Estado do Rio de Janeiro, Brasil. *Rev Bras Parasitol Vet* 2006; 15(4): 167-181. PMID:17196121.
- Amato JFR, Boeger WA, Amato SB. *Protocolos para laboratório - Coleta e processamento de parasitos de Pescado*. Seropédica: Imprensa Universitária, Universidade Federal Rural do Rio de Janeiro; 1991.
- Brasil. Ministério do Meio Ambiente. Instituto Brasileiro do Meio Ambiente e dos Recursos Naturais Renováveis – IBAMA. *Estatística da pesca 2005. Brasil: grandes regiões e unidades da federação*. Brasília: Ministério do Meio Ambiente; 2007 [cited 2017 Oct 11]. Available from: <https://www.ibama.gov.br/phocadownload/biodiversidade/>

- biodiversidade-aquatica/gestao-pesqueira/estatistica-pesqueira/2005-ibama-estatistica-da-aquicultura-e-pesca-no-brasil.pdf
- Bush AO, Lafferty KD, Lotz JM, Shostak AW. Parasitology meets ecology on its own terms: Margolis et al. revisited. *J Parasitol* 1997; 83(4): 575-583. <http://dx.doi.org/10.2307/3284227>. PMID:9267395.
- Caira JN, Jensen K. *Planetary Biodiversity Inventory (2008–2017): Tapeworms from Vertebrate Bowels of the Earth*. Lawrence: University of Kansas, Natural History Museum; 2017. (Special Publication; no. 25)
- Campbell RA, Beveridge I. Revision of the family Pterobothriidae Pintner, 1931 (Cestoda: Trypanorhyncha). *Invertebr Taxon* 1996; 10(3): 617-662. <http://dx.doi.org/10.1071/IT9960617>.
- Campbell RA, Beveridge L. Order Trypanorhyncha Diesing 1863. In: Khalil LF, Jones A, Bray RA. *Keys to the Cestode Parasites of Vertebrates*. Wallingford: CAB International; 1994. p. 51-148.
- Carvajal J, Rego AA. Critical studies on the genus *Callitetrarhynchus* (Cestoda: Trypanorhyncha) with recognition of *Rhynchobothrium speciosum* Linton, 1897 as a valid species of the genus *Callitetrarhynchus*. *Syst Parasitol* 1985; 7(3): 161-167. <http://dx.doi.org/10.1007/BF00011449>.
- Cordeiro AS, Luque JL. Community ecology of the metazoan parasites of Atlantic moonfish, *Selene setapinnis* (Osteichthyes: Carangidae) from the coastal zone of the State of Rio de Janeiro, Brazil. *Rev Bras Biol* 2004; 64(3): 399-406. <http://dx.doi.org/10.1590/S1519-69842004000300004>. PMID:15622838.
- Crosetti D. Current state of grey mullet fisheries and culture. In: Crosetti D, Blaber S. *Biology, Ecology and Culture of Grey Mullet (Mugilidae)*. Boca Raton: CRC Press Taylor & Francis Group; 2016. p. 398-450. <http://dx.doi.org/10.1201/b19927-17>.
- Dias FJE, São Clemente SC, Knoff M. Cestóides Trypanorhyncha parasitos de peroá, *Balistes capriciscus* Gmelin, 1789 comercializados no Estado do Rio de Janeiro, Brasil. *Rev Bras Cienc Vet* 2009; 16(1): 19-21. <http://dx.doi.org/10.4322/rbcv.2014.163>.
- Dias FJE, São Clemente SC, Knoff M. Nematóides anisacuídeos e cestóides Trypanorhyncha de importância em saúde pública em *Aluterus monoceros* (Linnaeus, 1758) no Estado do Rio de Janeiro, Brasil. *Rev Bras Parasitol Vet* 2010; 19(2): 20-23. <http://dx.doi.org/10.1590/S1984-29612010000200005>.
- Dias LNS, Paiva RS, São Clemente SC, Rodrigues AE, Peralta ASL, Matos ER. Cestodes (Trypanorhyncha) parasites of Scianids of commercial importance captured in the Amazonian littoral, Brazil. *Rev Bras Cienc Vet* 2011; 18(1): 3-5. <http://dx.doi.org/10.4322/rbcv.2014.111>.
- Felizardo NN, Knoff M, Diniz JB, Torres EJJ, Calixto FAA, Clemente SCS. *Pterobothrium crassicole* parasitizing *Paralichthys orbignyanus* (Osteichthyes, Paralichthyidae) in Brazil. *An Acad Bras Cienc* 2018; 90(2): 1605-1610. <http://dx.doi.org/10.1590/0001-3765201820170323>. PMID:29768571.
- Felizardo NN, Torres EJJ, Fonseca MCG, Pinto RM, Gomes DC, Knoff M. Cestodes of the flounder *Paralichthys isosceles* Jordan, 1890 (Osteichthyes, Paralichthyidae) from the State of Rio de Janeiro, Brazil. *Neotrop Helminthol* 2010; 4(2): 113-126.
- Fonseca MCG, São Clemente SC, Felizardo NN, Gomes DC, Knoff M. Trypanorhyncha cestodes of hygienic-sanitary importance infecting flounders *Paralichthys patagonicus* Jordan, 1889 and *Xystreurus rasile* (Jordan, 1891) of the Neotropical region, Brazil. *Parasitol Res* 2012; 111(2): 865-874. <http://dx.doi.org/10.1007/s00436-012-2912-z>. PMID:22488201.
- Food and Agriculture Organization of the United Nations – FAO. *The State of World Fisheries and Aquaculture. Contributing to food security and nutrition for all*. Roma: FAO; 2016.
- Froese R, Pauly D. *Mugil liza*. *FishBase* [online]. 2018 [cited 2018 Nov 09]. Available from: <http://www.fishbase.org/summary/mugil-liza.html>
- Katselis G, Koutsikopoulos C, Rogdaki Y, Lachanas T, Dimitriou E, Vidalis K. A model to estimate the annual production of roes (*avgotaracho*) of flathead mullet (*Mugil cephalus*) based on the spawning migration of species. *Fish Res* 2005; 75(1-3): 138-148. <http://dx.doi.org/10.1016/j.fishres.2005.03.013>.
- Knoff M, Amato JFR. Nova espécie do gênero *Genolopa* Linton, 1910 (Monorchidae, Lasiotocinae) parasito de Tainha, *Mugil platanus* Günther, 1880 da costa do estado do Rio de Janeiro, Brasil. *Rev Bras Biol* 1991; 51(4): 801-804.
- Knoff M, Amato JFR. Nova espécie do gênero *Phyllodistomum* Braun, 1899 (Gorgoderidae, Gorgoderinae) parasita de tainha, *Mugil platanus* Günther, 1880 da costa do Rio de Janeiro, Brasil. *Rev Bras Biol* 1992; 52(1): 53-56.
- Knoff M, Boeger WA. Expanded description of the female of *Lernaenicus longiventris* Wilson, 1917, (Copepoda, Siphonostomatoida, Pennellidae) based on specimens from *Mugil platanus* Günther, 1880 (Perciformes, Mugilidae) of the State of Rio de Janeiro, Brazil. *Mem Inst Oswaldo Cruz* 1994; 89(3): 313-317. <http://dx.doi.org/10.1590/S0074-02761994000300005>.
- Knoff M, Luque JL, Amato JFR. Community ecology of the metazoan parasites of grey mullets, *Mugil platanus* (Osteichthyes: Mugilidae) from the littoral of the State of Rio de Janeiro, Brazil. *Rev Bras Biol* 1997; 57(3): 441-454. PMID:9430918.
- Knoff M, Luque JL, Takemoto RM. Parasitic copepods on *Mugil platanus* Günther (Osteichthyes: Mugilidae) from the coast of the state of Rio de Janeiro, Brazil. *Rev Bras Parasitol Vet* 1994; 3(1): 45-56.
- Knoff M, São Clemente SC, Pinto RM, Gomes DC. Prevalência e intensidade de infecção de cestóides Trypanorhyncha de elasmobrânquios nos Estados do Paraná e Santa Catarina, Brasil. *Parasitol Latinoam* 2002; 57(4): 149-157. <http://dx.doi.org/10.4067/S0717-77122002000300012>.
- Knoff M, Serra-Freire NM. Protozoários parasitos de *Mugil platanus* Günther, 1880 do litoral do estado do Rio de Janeiro, Brasil. *Rev Bras Parasitol Vet* 1993; 2(1): 25-28.
- Kuraieim BP, Knoff M, Felizardo NN, Gomes DC, São Clemente SC. *Callitetrarhynchus speciosus* (Linton, 1987) Carvajal & Rego, 1985, Trypanorhyncha (Cestoda) parasitizing *Priachantus arenatus* (Cuvier, 1829) (OSTEICHTHYES, Priachanthidae) from Rio de Janeiro Coast, Brazil. *Neotrop Helminthol* 2016; 10(1): 33-40.
- Kuris AM, Hechinger RF, Shaw JC, Whitney KL, Aguirre-Macedo L, Boch CA, et al. Ecosystem energetic implications of parasite and free-living biomass in three estuaries. *Nature* 2008; 454(7203): 515-518. <http://dx.doi.org/10.1038/nature06970>. PMID:18650923.
- Luque JL, Felizardo NN, Tavares LER. Community ecology of the metazoan parasites of namorado sandperches, *Pseudoperca numida* Miranda-Ribeiro, 1903 and *P. semifasciata* Cuvier, 1829 (Perciformes, Pinguipedidae), from the coastal zone of the State of Rio de Janeiro, Brazil. *Rev Bras Biol* 2008; 68(2): 269-278. PMID:18660954.
- MacKenzie K, Campbell N, Mattiucci S, Ramos P, Pinto AL, Abaunza P. Parasites as biological tags for stock identification of Atlantic horse mackerel *Trachurus trachurus* L. *Fish Res* 2008; 89(2): 136-145. <http://dx.doi.org/10.1016/j.fishres.2007.09.031>.
- Malek M. Parasites as discrimination keys in two sympatric species of gobies. *Bull Eur Assoc Fish Pathol* 2004; 24(4): 173-179.

- Marcogliese DJ. Parasites of the superorganism: are they indicators of ecosystem health? *Int J Parasitol* 2005; 35(7): 705-716. <https://doi.org/10.1016/j.ijpara.2005.01.015>
- Mattos DPBG, Verícimo MA, Lopes LMS, São Clemente SC. Immunogenic activity of the fish tapeworm *Pterobothrium heteracanthum* (Trypanorhyncha: Pterobothriidae) in BALB/c mice. *J Helminthol* 2013; 89(2): 203-207. <https://doi.org/10.1017/S0022149X13000795>
- Menezes NA, Figueiredo JL. *Manual de Peixes Marinhas do Sudeste do Brasil. V. Teleostei (4)*. São Paulo: Museu de Zoologia, Universidade de São Paulo; 1985.
- Menezes NA, Oliveira C, Nirchio M. An old taxonomic dilemma: the identity of the western south Atlantic lebranche mullet (Teleostei: Perciformes: Mugilidae). *Zootaxa* 2010; 2519(1): 59-68. <http://dx.doi.org/10.11646/zootaxa.2519.1.4>.
- Menezes PQF, Knoff M, Felizardo NN, Cunha NC, Telleria EL, Lopes Torres EJ, et al. *Callitetrarhynchus gracilis* (Rudolphi, 1819) Pintner, 1931 (Cestoda: Trypanorhyncha) parasitizing the musculature of *Sardinella brasiliensis* (Steindachner, 1879) (Actinopterygii) off the coast of the state of Rio de Janeiro, Brazil. *PLoS One* 2018; 13(11)<http://dx.doi.org/10.1371/journal.pone.0206377>. PMID:30427883.
- Oliveira EF, Amato JFR, Knoff M. A new species of *Hysterolecithea* (Trematoda: Hemiuridae) from the mullet, *Mugil liza*, in the state of Rio de Janeiro, Brazil. *Proc Helminthol Soc Wash* 1988; 55(1): 58-61.
- Oliveira SA, Clemente SC, Benigno RN, Knoff M. *Poecilancistrum caryophyllum* (Diesing, 1850) (Cestoda, Trypanorhyncha), parasito de *Macrodon ancylodon* (Bloch & Schneider, 1801) do litoral do Norte do Brasil. *Rev Bras Parasitol Vet* 2009; 18(4): 71-73. <http://dx.doi.org/10.4322/rbpv.01804014>. PMID:20040214.
- Palm HW. Trypanorhynch cestodes of commercial fishes from Northeast Brazilian coastal waters. *Mem Inst Oswaldo Cruz* 1997; 92(1): 69-79. <http://dx.doi.org/10.1590/S0074-02761997000100014>.
- Palm HW. *Nybelinia* Poche, 1926, *Heteronybelinia* gen. nov. and *Mixonybelinia* gen. nov. (Cestoda, Trypanorhyncha) in the collections of the Natural History Museum London. *Bull Nat Hist Mus Lond Zool* 1999; 65(2): 133-153.
- Palm HW. *The Trypanorhyncha Diesing, 1863*. Bogor: PKSPL-IPB Press; 2004.
- Palm HW. *Nataliella marcelli* gen n., sp. n. (Cestoda: Trypanorhyncha: Rhinoptercolidae) from Hawaiian. *Syst Parasitol* 2010; 75(2): 105-115. <http://dx.doi.org/10.1007/s11230-009-9205-7>. PMID:20119703.
- Palm HW, Bray RA. *Marine fish parasitology in Hawaii*. Hohenwarsleben: Westarp and Partner Digitaldruck; 2014.
- Palm HW, Waeschenbach A, Olson P, Littlewood DTJ. Molecular phylogeny and evolution of the Trypanorhyncha Diesing, 1863. *Mol Phylogenet Evol* 2009; 52(2): 351-367. <http://dx.doi.org/10.1016/j.ympev.2009.01.019>. PMID:19489123.
- Pereira J Jr, Boeger WA. Larval tapeworms (Platyhelminthes, Cestoda) from sciaenid fishes of southern coast of Brazil. *Zoosystema* 2005; 27(1): 5-25.
- Pina JV, Chaves PT. A pesca de tainha e parati na Baía de Guaratuba, Paraná, Brasil. *Acta Biol Parana* 2005; 34: 103-113. <http://dx.doi.org/10.5380/abpr.v34i0.957>.
- Pinto RM, Knoff M, São Clemente SC, Lanfredi RM, Gomes DC. The taxonomy of some Poecilacanthoidea (Eucestoda: Trypanorhyncha) from elasmobranchs off the southern coast of Brazil. *J Helminthol* 2006; 80(3): 291-298. <http://dx.doi.org/10.1079/JOH2006339>. PMID:16923274.
- Porto CJS, São Clemente SC, Freitas MQ, São Clemente RRB, Knoff M, Matos E. *Pterobothrium crassicolle* (Eucestoda: Trypanorhyncha) em corvinas, *Micropogonias furnieri*, comercializadas no município de Niterói, Rio de Janeiro, Brasil. *Rev Bras Cienc Vet* 2009; 16(3): 133-135. <http://dx.doi.org/10.4322/rbcv.2014.181>.
- Rego AA. Redescrção de *Pterobothrium crassicolle* Diesing, 1850 (Cestoda: Thypanorhyncha) e revalidação da espécie. *Mem Inst Oswaldo Cruz* 1987; 82(1): 51-53. <http://dx.doi.org/10.1590/S0074-02761987000100008>.
- Reis EG, D'Incao F. The present status of artisanal fisheries of extreme Southern Brazil: an effort towards community-based management. *Ocean Coast Manage* 2000; 43(7): 585-596. [http://dx.doi.org/10.1016/S0964-5691\(00\)00048-X](http://dx.doi.org/10.1016/S0964-5691(00)00048-X).
- Rodero M, Cuéllar C. Humoral immune responses induced by *Gymnorhynchus gigas* extracts in BALB/c mice. *J Helminthol* 1999; 73(3): 239-273. <http://dx.doi.org/10.1017/S0022149X99000372>. PMID:10526417.
- Rohde K. *Marine parasitology*. Wallingford: CSIRO Publishing, Melbourne, CABI Publishing; 2005.
- São Clemente SC. Plerocercos da ordem Trypanorhyncha, parasitos de corvina *Micropogonias furnieri* (Desmarest) no litoral do Estado do Rio de Janeiro. *Atas Soc Biol do Rio de Janeiro*. 1986; 26: 29-36.
- São Clemente SC, Knoff M, Lima FC, Andrada CDG, Felizardo NN, Padovani RES, et al. Cestóides Trypanorhyncha parasitos de peixe sapo-pescador, *Lophius gastrophysus* Miranda-Ribeiro, 1915 comercializados no Estado do Rio de Janeiro, Brasil. *Rev Bras Parasitol Vet* 2007; 16(1): 37-42. PMID:17588321.
- São Clemente SC, Knoff M, Padovani RES, Lima FC, Gomes DC. Cestóides Trypanorhyncha parasitos de congro-rosa, *Genypterus brasiliensis* Regan, 1903 comercializados nos municípios de Niterói e Rio de Janeiro, Brasil. *Rev Bras Parasitol Vet* 2004; 13(3): 97-102.
- Silva MA, Araújo FG. Distribuição e abundância de tainhas e paratis (Osteichthyes, Mugilidae) na Baía de Sepetiba, RJ, Brasil. *Rev Bras Zool* 2000; 17(2): 473-480. <http://dx.doi.org/10.1590/S0101-81752000000200018>.
- Thielen F, Zimmermann S, Baska F, Taraschewski H, Sures B. The intestinal parasite *Pomphorhynchus laevis* (Acanthocephala) from barbel as a bioindicator for metal pollution in the Danube River near Budapest, Hungary. *Environ Pollut* 2004; 129(3): 421-429. <http://dx.doi.org/10.1016/j.envpol.2003.11.011>. PMID:15016463.
- Vázquez-López C, De Armas-Serra C, Bernadina W, Rodríguez-Cabeiro F. 24-kDa collagenase from *Gymnorhynchus gigas* elicits rat ileum hyperreactivity and is a target of humoral response in mice previously given a single oral dose of parasite extract. *Dig Dis Sci* 2002; 47(4): 935-942. <http://dx.doi.org/10.1023/A:1014785210407>. PMID:11991631.
- Zuchinalli JC, Barros LA, Felizardo NN, Calixto FAA, São Clemente SC. Trypanorhyncha cestodes parasites of guaivira important in seafood hygiene. *Bol Inst Pesca* 2016; 42(3): 704-709. <http://dx.doi.org/10.20950/1678-2305.2016v42n3p704>.