

Searching chromosome mosaicisms in 45,X Turner syndrome: how relevant is it?

Jéssica Silva Soares¹
<https://orcid.org/0000-0002-9975-4878>

Renata Maria Rabello da Silva Lago²
<https://orcid.org/0000-0002-6743-8934>

Maria Betânia Pereira Toralles²
<https://orcid.org/0000-0001-7970-7102>

Laís Ribeiro Mota¹
<https://orcid.org/0000-0002-7804-8608>

Esmeralda Santos Alves²
<https://orcid.org/0000-0002-9912-8404>

Acácia Fernandes Lacerda de Carvalho¹
<https://orcid.org/0000-0003-3639-338X>

¹ Laboratório de Genética Humana e Mutagênese, Instituto de Biologia, Universidade Federal da Bahia, Salvador, BA, Brasil
² Departamento de Genética Médica, Hospital Universitário Edgard Santos, Universidade Federal da Bahia, Salvador, BA, Brasil

ABSTRACT

Objective: To investigate the presence of chromosome mosaicism, especially for the presence of Y derived material in 45,X women with Turner syndrome (TS). **Materials and methods:** FISH and PCR were performed for the presence of chromosome mosaicism and Y-derived-material and genetic findings were correlated to clinical data. **Results:** Thirty-one participants were enrolled: 18 (58%) had chromosome mosaicisms (FISH), Y-derived material was found in 2. Yet, SRY primer was found with PCR in only one of them and DYZ3 was not found. The most frequent clinical findings were short or webbed neck (81,82%), high-arched palate (78%), breast hypertelorism, e cubitus valgus and genu valgus (57.6%, both), short fourth metacarpals (46.9%), epicanthic folds (43.8%), shield chest (43.8%), lymphedema (37.5%), and low set ears (34.4%). Both patients with Y-derived-material had primary amenorrhea, dyslipidemia and reached the height of 150 cm despite not treated with recombinant growth hormone (GHR). One of them showed 26% of leukocytes with Y-derived material and few clinical findings. **Conclusions:** FISH techniques proved efficient in detecting chromosome mosaicisms and Y-derived material and searching in different tissues such as mouth cells is critical due to the possibility of tissue-specific mosaicism. Phenotypical variance in TS may be a signal of chromosome mosaicisms, especially with the presence of Y-derived material. Arch Endocrinol Metab. 2021;65(6):739-46

Keywords

Turner syndrome; PCR; FISH technique; mosaicism; monosomy X

Correspondence to:

Acácia Fernandes Lacerda de Carvalho
 Laboratório de Genética Humana e Mutagênese, Instituto de Biologia, Universidade Federal da Bahia
 Rua Barão de Jeremoabo, 147
 40170-290 – Salvador, BA, Brasil
acacia.carvalho@ufba.br
acaciaflc@uol.com.br

Received on Sept/11/2020
 Accepted on Jun/22/2021

DOI: 10.20945/2359-3997000000403

INTRODUCTION

Full monosomy of X chromosome or structural abnormalities of one of the sex chromosomes characterize Turner syndrome (TS). Both conditions may present with mosaicisms, with two or more different cell lineages.

TS is usually diagnosed with karyotype using GTG banding. About 50%-60% of the cases present with 45,X monosomy, 5%-10% show structural abnormalities and 30%-40% have mosaic cell lineages, including cells with structurally abnormal X and presence of Y chromosome (5%-10% of mosaic cases) (1-5).

Use of molecular and cytomolecular techniques such as PCR (polymerase chain reaction) and FISH (fluorescence in situ hybridization) has been shown to perform better at detecting chromosome mosaicisms. Therefore, mosaicisms have proven to be more frequent than monosomy (1,6). Detecting Y-derived-material in TS is of great relevance for defining prognosis, for its presence increases risk of gonadal tumors, specially gonadoblastoma, as well as virilization and hyperandrogenism (7,8).

The objective of this work was to investigate the frequency of chromosome mosaicisms, especially with

presence of Y-derived-material, in patients with 45,X TS with PCR and FISH techniques performed in mouth epithelium samples.

MATERIALS AND METHODS

ST patients followed at Genetics Clinics of University Hospital (Edgar Santos Hospital – Federal University of Bahia) were screened for the study between May 2014 and December 2015.

Participants were considered eligible if they had 45,X karyotypes (GTG banding). Research Ethics Committee of the hospital approved the study protocol (CAAE: 36305314.5.0000.0049). All 31 patients were evaluated by the multidisciplinary team (pediatricians, endocrinologists and geneticists) and clinical data and biological samples were collected.

Laboratory methods

FISH in mouth epithelial cells

Mouth epithelial cells (buccal smears) were collected from the inner lining of the cheeks after mouth-washing with saline solution. The sample was centrifugated for 15 minutes at 1,000 rpm, incubated at KCl solution at 37 °C for 10 minutes, followed by prefixation with Carnoy solution (3:1 methanol/acetic acid) (9). Afterwards, the slide was washed out in different solutions: 2xSSC for 1 h at 37 °C; pepsin 0.005% (Pepsin/H₂O/HCl 1%) for 13 minutes at 37 °C; PBS at room temperature (RT) for 5 minutes; 0.95% formaldehyde for 5 minutes at RT; PBS solution for 5 minutes at RT; alcoholic series (70%, 85% and 100%, respectively) at RT for 2 minutes in accordance with Cytocell probe protocol.

For hybridization, two alpha satellite probes were used: DXZ1 for X chromosome and DYZ3 for Y chromosome (Cytocell-UK), green and orange spectra, respectively.

About 200 nuclei for each participant were analyzed in fluorescence microscopes with appropriate filters.

PCR in buccal smears

DNA extraction was performed with the following techniques: samples were centrifugated for 15 minutes at 1,000 rpm; 10% Chelex was added; double boiling incubation for 10 minutes, cooling with ice; centrifugation for 30 seconds; supernatant was transferred to another pre-identified microtube and freezer stored at -20 °C. Primers for SRY (242 bp) and

DYZ3 (1,000 bp) were obtained from Araújo's (10) sequencing and ring formation temperatures, according to Ventura's protocol (11) adopted by the authors. For reaction controls, a SNRP gene (located at 15q11.2) primer (145 bp) was used. Banding patterns were analyzed Amplified DNA fragments were separated on a 1% agarose gel for DYZ3 + SNRPN and a 3% agarose gel for SRY + SNRPN. The gel was stained with 12 µL of Sybr Safe per 100 mL. banding patterns were analyzed by comparing their measurements with the markers of molecular weight. One positive and one negative controls were used for each amplification.

RESULTS

Table 1 shows FISH results. 13 out of 41 (42%) participants showed only one signal of hybridization of X centromere, corresponding to X monosomy. Eighteen showed two signals of X or Y chromosomes, representing mosaicisms. X/XX mosaicisms were seen in 13 participants, X/XX/XXX in 2 and Y-derived chromosome mosaicism in 3 participants.

Eight out of eighteen participants had over 10% chromosome mosaicism, seven had 2%-10% mosaicism and three under 2% (even after expanding analysis to 500 nuclei). Among the participants with mosaicism over 10%, ST03 was the only one with XX lineage larger than the monosomic lineage.

Figure 1 shows FISH images of participants with mosaicisms under 2%. In slides 3 and 4, one 18-chromosome control probe shows (blue signals) chromosome 18 with double hybridization signals.

ST05, one of the participants with chromosome Y, showed two lineages with Y derived material, which adds up to 26% of the cells. ST12 had 4% Y-derived material whereas ST20 showed only one and needs further studies to confirm mosaicism (Figure 2).

DYZ3-PCR studies did not show presence of this region in any of the studied participants, whereas SRY-PCR was present only in ST05 (Figure 3).

The participants of the present study had mean age of 10.91 ± 8.9 years, ranging 1 month to 35 years. Eighteen of them had been referred due to dysmorphism and/or short stature and the others (45.5%) due to primary amenorrhea at pubertal age and might not have other physical alterations.

Participants showed variable number of dysmorphic features, range 0-17, average 8.3 (SD 4.4). The most frequent features were: short or webbed neck

Table 1. FISH analysis in mouth epithelial cells

Patient	FISH	N of studied nuclei	X %	XX %	XXX %	XY %	XXY %
TS01	nuc ish(DXZ1)x1[200]	200	100				
TS02	nuc ish(DXZ1)x1[191]/(DXZ1)x2[11]	202	94	6			
TS03	nucish(DXZ1)x1[64]/(DXZ1)x2[135]/ (DXZ1)x3[12]	211	30	64	6		
TS04	nuc ish(DXZ1)x1[88]/(DXZ1)x2[12]	100	88	12			
TS05	nucish(DXZ1)x1[148]/(DXZ1,DYZ3)x1[29]/ (DXZ1x1,DYZ3x2)[23]	200	74	-	-	14.5	11.5
TS06	nuc ish(DXZ1)x1[198]/(DXZ1)x2[2]	503	98.6	1.4			
TS07	nuc ish(DXZ1)x1[195]/(DXZ1)x2[5]	200	97,5	2.5			
TS08	nuc ish(DXZ1)x1[192]/(DXZ1)x2[8]	200	96	4			
TS09	nuc ish(DXZ1)x1[196]/(DXZ1)x2[4]	200	98	2			
TS10	nuc ish(DXZ1)x1[200]	200	100				
TS11	nuc ish(DXZ1)x1[196]/(DXZ1)x2[4]	200	98	2			
TS12	nuc ish(DXZ1)x1[196]/(DXZ1,DYZ3)x1[8]	204	96	-	-	4	
TS13	nuc ish(DXZ1)x1[136]/(DXZ1)x2[64]	200	68	32			
TS14	nuc ish(DXZ1)x1[200]	200	100				
TS15	nuc ish(DXZ1)x1[190]	190	100				
TS16	nuc ish(DXZ1)x1[200]	200	100				
TS17	nuc ish(DXZ1)x1[200]	200	100				
TS18	nuc ish(DXZ1)x1[200]	200	100				
TS19	nuc ish(DXZ1)x1[167]/(DXZ1)x2[33]	200	83.5	16.5			
TS20	nuc ish(DXZ1)x1[506]/(DXZ1,DYZ3)x1[1]	507	99.9	-	-	0.1	
TS21	nuc ish(DXZ1)x1[167]/(DXZ1)x2[35]	202	82.7	17.3			
TS22	nuc ish (DXZ1)x1[500]/(DXZ1)x2[3]	503	99.5	0.5			
TS23	nuc ish(DXZ1)x1[155]/(DXZ1)x2[45]	200	78	22			
TS24	nuc ish(DXZ1)x1[200]	200	100				
TS25	nuc ish(DXZ1)x1[196]/(DXZ1)x2[4]	200	98	2			
TS26	nuc ish(DXZ1)x1[200]	200	100				
TS27	nuc ish (DXZ1)x1[111]/(DXZ1)x2[88]/(DXZ1)x3[1]	200	55.5	44	0.5		
TS28	nuc ish(DXZ1)x1[200]	200	100				
TS29	nuc ish(DXZ1)x1[200]	200	100				
TS30	nuc ish(DXZ1)x1[200]	200	100				
TS31	nuc ish(DXZ1)x1[200]	200	100				

(81.8%), followed by high-arched palate (78%), breast hypertelorism and cubitus and genu valgum (57.6%), short fourth metacarpal (46.9%), epicanthic folds (43.8%), shield chests (43.8%), lymphoedema (37.5%), low-set ears (34.4%) (Table 2).

The most frequent comorbidities found in 17 (53.1%) the participants were endocrine conditions (low bone mass and hypothyroidism) followed by cardiac malformations (24.2%, especially aortic coarctation) and renal malformations (15.1%), eye abnormalities (3 cases), liver hemangioma (1 case) and hepatic steatosis (1 case).

DISCUSSION

Many studies have reported usefulness of PCR and FISH techniques to detect cryptic mosaicism, especially in non-blood cells, buccal smear cells in particular. Nazarenko and cols. (12) and Freriks and cols. (9) evaluated 45,X patients' buccal smear cells with FISH and found mosaicisms in 29% and 30.2% of them, respectively. In the present study, mosaicism was found in 58% of the participants. In two of them (6.4%), Y-derived chromosome was found, excluded one case presenting Y-mosaicism (TS20) in only one cell.

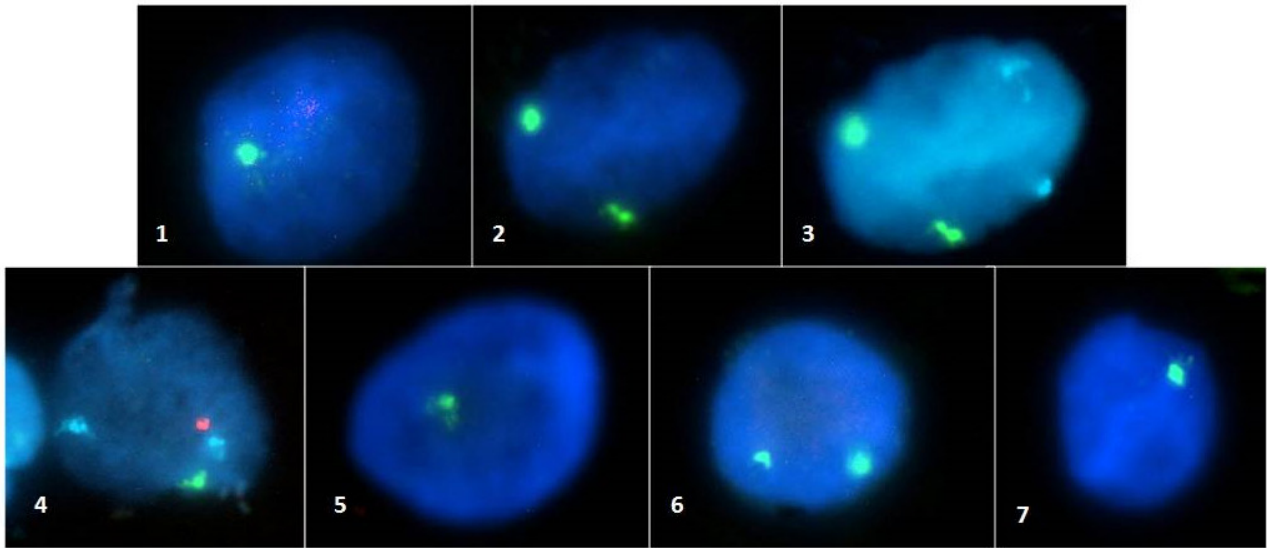


Figure 1. Photographs of interphasic nuclei of TS06 (1, 2 and 3), TS20 (4 and 5) and TS22 (6 and 7). Aqua-colored signals in 3 and 4 correspond to control-probe in centromeric region in chromosome 18, captured in these photographs as a parameter of hybridization of the nuclei.

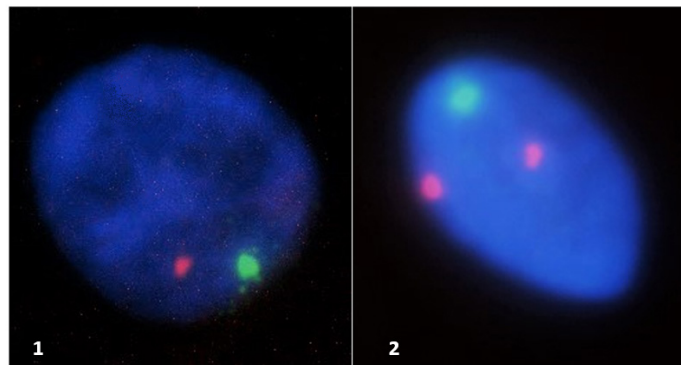


Figure 2. Interphasic nuclei with Y-chromosome. TS12 (1) and TS05 (2).

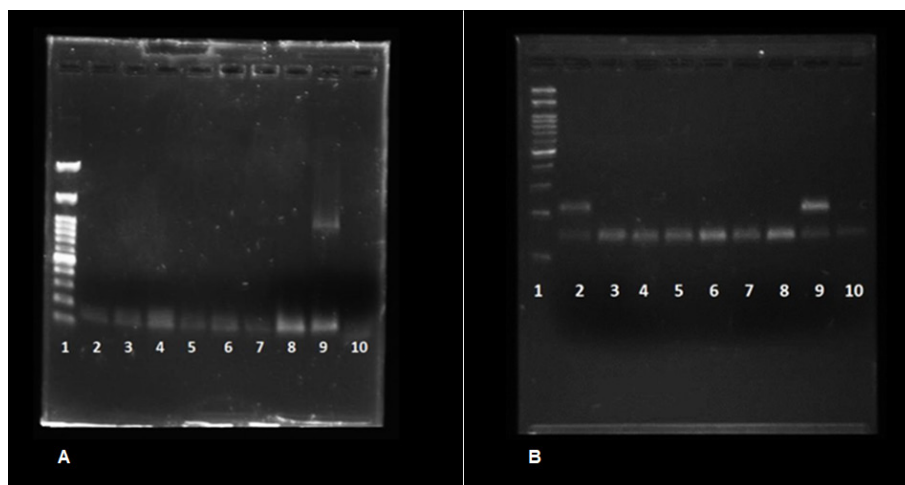


Figure 3. PCR Results: **A)** Primer DYZ3 + SNRPN. Bands: 1. Marker of molecular weight; 2. TS05; 3. TS10; 4. TS12; 5. TS14; 6. ST20; 7. TS22; 8. TS32; 9. Positive Control; 10. White; **B)** Primer SRY + SNRPN. Bands: 1. Marker of molecular weight; 2. TS05; 3. TS10; 4. TS12; 5. TS14; 6. TS20; 7. TS22; 8. TS32; 9. Positive Control; 10. Negative Control.

Table 2. TS dysmorphic features found in participants, grouped by FISH results

Features	Monosomy (N = 13)	Mosaicism > 10% (N = 7)	Mosaicism < 10% and ≥ 2% (N = 6)	Mosaicism < 2% (N = 2)	X-Marker Mosaicism (N = 2)	Y-derived Marker Mosaicism (N = 2)	Total
Short or webbed neck	13	4	5	2	1	1	26
High-arched palate	12	5	5	2	NE	1	25
Breast hypertelorism	8	5	4	2	NE	0	19
Cubitus valgus and e genu valgum	9	5	2	1	2	0	19
Low posterior hairline	10	2	4	1	1	0	18
Shortened 4th metacarpal	8	4	3	0	0	0	15
Epicanthic folds	7	1	4	1	1	0	14
Shield chest	6	1	4	1	2	0	14
Lymphedema in early life	7	1	3	1	0	0	12
Low-set ears	4	3	2	1	1	0	11
Deformity of external ear	7	0	2	2	0	0	11
Nail dysplasia	6	1	1	0	0	0	8
Bushy brows	4	0	2	0	0	0	6
Abnormal dental development	3	1	1	1	0	0	6
Eye hypertelorism	3	0	1	0	0	1	5
Pectus excavatum	2	1	0	1	0	0	4
Ptosis	0	0	2	1	0	0	3
Seborrheic dermatitis	2	1	0	0	0	0	3
<i>Multiple pigmented nevi</i>	0	2	0	0	0	0	2
Micrognathia	0	0	1	0	0	0	1
Kyphosis	0	0	0	1	0	0	1

NE: patient not evaluated for the condition.

Our results suggest further investigation other than peripheral G-banding karyotyping may be necessary in 45,X patients since Y-derived material may be associated with elevated risk of gonadoblastoma in women with TS.

In the present study, Y-chromosome was detected in only 3.2% of the participants. In similar studies, different prevalences were found: Bianco and cols. (2) found SRY in 35% and DYZ3 in 10% of the participants, respectively; and DYZ3 amplification was found only combined with SRY amplification. In 2009, the same author (13) found SRY in 12 patients and only four were also positive for DYZ3. Ventura (11) found SRY in 3% out of 98 patients in several tissues; 3 other primers were used, and SRY was amplified in 3 out of four cases with Y-derived material. Cortés-Gutiérrez and cols. (14) found SRY in 1 out of 24 patients (4,2%); Freriks and cols. (9) found SRY in none of five patients with Y chromosome detected with FISH in mouth epithelial cells; yet, 2 of them were positive using RT-PCR.

These data show that, among the most popular primers, SRY is the most frequently detected in women with TS. Bianco and Bianco and cols. (2,13) also used SRY and DYZ3 primers, the latest one was found only in combination with SRY but not in the totality of the cases, as our own data also show (DYZ3 found in neither of our 3 cases with Y-derived material detected with FISH, not even in the SRY-positive patient (TS05) who presented 26% of cells with Y chromosome signal by FISH, which may reflect the non-completeness of this chromosome in patients.

Other genes have been used in the investigation of hidden Y chromosome sequences in patients with TS, among them we highlight: ZFY, DYZ1, DYS1, PABY, and TSPY. The last one, TSPY, has great relevance because it seems to be associated with the GBY region – an oncogenic locus found on the Y chromosome – and it showed high expression in some patients with gonadoblastoma. The SRY and DYZ3 genes, in turn, are the sequences most commonly used in studies, and

play a role in sexual determination and chromosomal stability, respectively (8,15).

Similar to Freriks's and cols. (9) findings, the present study showed that FISH was more efficient than PCR when investigating Y-chromosome mosaicism because FISH makes it possible to characterize the chromosomes of the studied patients and rule out cases presenting Y-derived chromosomes and detect a second lineage with two or more X-derived chromosomes.

This study also showed that using mouth epithelial cells may be efficient for this kind of analysis and advantageously evaluates a tissue with the same embryo origin as fibroblasts without the need for biopsy or culturing. Yet, it requires same-day processing to avoid bacterial contamination (16).

Several studies have evaluated the usefulness of analyzing tissues with different embryo origin than lymphocytes, whose cultures are generally used for karyotyping. In the present study, 7 (38%) out of the 18 patients presenting mosaicism, at least one additional X was found in over 10% of the studied cells. Three of them showed elevated rates of a second chromosomal lineage (64%, 44% e 32%). Such data highly suggest the presence of tissue-specific mosaicism, since those lineages had not been found in lymphocyte karyotyping, even being detected in elevated rates.

Several studies have shown tissue-specific differences in detecting aneuploidy in women with TS. Nazarenko and cols. (12) found tissue-specific differences in 92% of the studied cases; Guedes (3) described a case whose lymphocyte karyotype showed 2.5% of the cells to be 45,X and 97,5% idic(Yp) but 60% of her gonadal cells presented 45,X lineage. Hanson and cols. (6) studied mosaicism with FISH technique in lymphocytes and mouth cells in 45,X patients found four cases with high-frequency 46,XX mosaicism and one of them with 60% 47,XXX mosaicism in mouth cells.

Previous studies with Brazilian patients showed similar mean age at diagnosis compared to this series (10.9 years) (4,17,18).

Patients were referred during adolescence for several reasons: primary amenorrhea and lack of pubertal signs were the most frequent. During childhood (ages 0-5 years), they were all (100%) referred due to dysmorphism or congenital malformations. Yet, dysmorphism were more frequently found in girls referred at ages 6-11 years.

Among the girls diagnosed after the age of 12 years (n = 17), at least 7(41%) showed at least seven

dysmorphism due to TS: short or webbed neck, high-arched palate, valgus cubitus and genu valgum, shortened fourth metacarpal, breast hypertelorism, low set hair and epicanthus. Considering the relevance of early diagnosis of TS to enhance life quality, diagnosis could have been made earlier since dysmorphism were present since birth.

Considering the clinical profile of the patients, we observed that the percentages of each characteristic are very varied among the works found in the literature, with the same characteristic presenting high frequency (>50%) in some studies and low frequency in others. This can be seen in the study of Jung and cols. (4) which refers to the presence of ulna valgus in 72.5% of the cases and ogival palate in 59.6%, and the work by Araújo and cols. (19) who reported 22.4% ulna valgus and 16.6% ogival palate. In the current work, the values for ulna valgus were 57.9% and 78% for ogival palate, contributing to the perception of the great variability observed in the literature, which may be associated with factors such as underdiagnosis and a greater tendency to refer patients with more dysmorphism. Despite this wide variation, the majority of studies report the presence of the same characteristics in the population studied with TS (20-23).

The most frequent conditions associated with TS are metabolic and endocrine dysfunction, heart and kidney diseases, ear infections, liver abnormalities and ophthalmological conditions. Frequencies of such conditions also vary in literature, yet less often than dysmorphism. The present study found endocrine and/or metabolic conditions in 51.1% of the cases, whilst Guimarães and cols. (20) and Araújo and cols. (19) found them in 38.3% and 21% of their cases, respectively.

Eight (24.2%) participants had heart malformations, such as described by Guimarães and cols. (20) (25%). Araújo and cols. (19) found heart disease in 45% of their TS cases.

TS03, who presented with additional X-lineage in 70% of the studied cells, was diagnosed at 25 years of age due to secondary amenorrhea. She has short stature (138 cm), epicanthus, high-arched palate, cubitus valgus, genu valgum, shortened fourth metacarpus and low bone mass. She also had a medial tumor in conjunctiva of her right eye. The large proportion of 46,XX lineage could explain menarche and breast development and delayed diagnosis.

The two participants with Y chromosomes (TS05 e TS12) both had primary amenorrhea, dyslipidemia and were 150 cm tall despite not being treated with GH. In the present study, only one other patient, with mosaicism of X > 10%, presented dyslipidemia and 6 (19.3%) patients had primary amenorrhea, of which 1 presented monosomy X, 3 mosaicism of X < 2%, and 2 mosaicism of X > 10%. No other patients reached the final stature of 1.5 m, even with the use of GH. Of the patients who used the hormone, the highest stature was 1.45 m, and in the other patients who did not use the hormone, the highest stature was also 1.45 m. TS05 had very few dysmorphic features: eye hypertelorism, downward lips, high-arched palate, short neck and low bone mass. TS12 had only 4% Y-derived cells and had no dysmorphism but had hypothyroidism, liver hemangioma and panic syndrome. Gonadal study has not been performed yet in these patients.

TS20 showed Y-derived material in one out of the 507 studied nuclei and was diagnosed at the age of 15 years due to failure to thrive, short stature and pubertal delay. She was on GHr for only 18 months and final height was 136 cm at the age of 21 years. She has hypogonadism, low bone mass and mild hearing deficit. Her only dysmorphism is short neck in addition to short stature.

In the present study, FISH technique in mouth cells proved efficient to detect chromosomal mosaicism in patients with TS and karyotype 45,X and FISH can be added to traditional G-banding techniques in lymphocytes to search chromosomal mosaicism and Y-derived lineages. If high-frequency chromosomal mosaicism is found, studying a different tissue may be relevant due to the possibility of tissue-specific mosaicism.

FISH was shown more efficient than PCR at identifying chromosomal mosaicism with Y-derived material due to the fact that PCR is more specific than FISH. However, PCR can be used to investigate chromosomal mosaicism in women with TS as a screening for Y-specific sequences. This may be more cost-effective, as in the current study, it was observed that the costs of the reagents for carrying out the FISH were three times higher than for PCR, as well as which the FISH equipment is more expensive.

Although there is a great phenotypical variability among patients with TS, clinical features are well established, being short stature the most prevalent and it should be used as a marker to suspect TS.

In the present study, age at diagnosis was inversely correlated to dysmorphism: the richer the phenotype, the earlier they were referred to specialized care. Those diagnosed age 12 years and over were referred to the clinic for amenorrhea.

Establishing precisely the chromosomal abnormalities is extremely important not only to diagnose TS but for prognostic reasons since the presence of lineages with additional X chromosomes or the presence of Y chromosome influence phenotype and risk of malignancy.

Statement of ethics: this study was approved by the Ethics Commission of the *Universidade Federal da Bahia* and informed written consent was obtained from participating subjects.

Funding sources: this work was supported by Edgard Santos Teaching Hospital Academic, Federal University of Bahia, Salvador, Bahia, Brazil.

Author contributions: JSS contributed to the design of the work, analysis and interpretation of data, genotype-phenotype correlation and writing the manuscript. RMRS and MBPT performed the clinical evaluation of the patients and contributed to the final version of the manuscript, revised the manuscript critically. LRM and ESA contributed to the analysis and interpretation of the genomic data. All authors discussed the results and provided critical feedback to the manuscript. AFLC contributed to the design of the work, supervised the project, final version of the manuscript.

Disclosure: no potential conflict of interest relevant to this article was reported.

REFERENCES

- Hanson L, Bryman I, Janson PO, Jakobsen AM, Hanson C. Fluorescence in situ hybridisation analysis and ovarian histology of women with Turner syndrome presenting with Y-chromosomal material: a correlation between oral epithelial cells, lymphocytes and ovarian tissue. *Hereditas*. 2002;137(1):1-6.
- Bianco BAV. Detecção de sequências cromossomo Y-específicas em portadoras da síndrome de Turner: importância para o prognóstico genético-clínico de gonadoblastoma [tese de mestrado]. São Paulo: Escola Paulista de Medicina; 2006.
- Guedes AD. Determinação do fenótipo sexual em uma criança com mosaicism 45,X/46,X,ídico(Yp): importância da proporção relativa da linhagem 45,X no tecido gonadal [tese de mestrado]. São Paulo: Universidade Federal de São Paulo; 2006.
- Jung MP, Amaral JL, Fontes RG, Costa AT, Wuillaume SM, Cardoso MHCA. Diagnóstico da Síndrome de Turner: a experiência do Instituto Estadual de Diabetes e Endocrinologia – Rio de Janeiro, de 1970 a 2008. *Rev Bras Saúde Matern Infant*. 2010;10(1):117-24.
- Zhong Q, Layman LC. Genetic considerations in the patient with Turner syndrome – 45,X with or without mosaicism. *Fertil Steril*. 2012;98(4):775-9.
- Hanson L, Bryman I, Barrenäs ML, Janson PO, Wahlström J, Albertsson-Wikland K, et al. Genetic analysis of mosaicism in 53 women with Turner syndrome. *Hereditas*. 2001;134(2):153-9.

7. Dendrinos ML, Smorgick N, Marsh CA, Smith YR, Quint EH. Occurrence of gonadoblastoma in patients with 45,X/46,XY mosaicism. *J Pediatr Adolesc Gynecol*. 2015;28(3):192-5.
8. Marqui ABT, Silva-Grecco RL, Balarin MAS. Prevalência de sequências do Y e de gonadoblastoma em síndrome de Turner. *Rev Paul Pediatr*. 2016;34(1):114-24.
9. Freriks K, Timmers HJ, Netea-Maier RT, Beerendonk CC, Otten BJ, van Alfen-van der Velden JA, et al. Buccal cell FISH and blood PCR-Y detect high rates of X chromosomal mosaicism and Y chromosomal derivatives in patients with Turner syndrome. *Eur J Med Genet*. 2013;56(9):497-501.
10. Araújo C. Identificação molecular de sequências do cromossomo Y em pacientes com síndrome de Turner [dissertação de mestrado]. Cuiabá: Universidade Federal de Mato Grosso; 2008.
11. Ventura VPS. Pesquisa do cromossoma Y na síndrome de Turner [dissertação de mestrado]. Portugal: Universidade de Aveiro; 2010.
12. Nazarenko SA, Timoshevsky VA, Sukhanova NN. High frequency of tissue-specific mosaicism in Turner syndrome patients. *Clin Genet*. 1999;56(1):59-65.
13. Bianco B, Lipay M, Guedes A, Oliveira K, Verreschi IT. SRY gene increases the risk of developing gonadoblastoma and/or nontumoral gonadal lesions in Turner syndrome. *Int J Gynecol Pathol*. 2009;28(2):197-202.
14. Cortés-Gutiérrez EI, Herrera-Bartolo R, Dávila-Rodríguez MI, Palacios-Saucedo GC, Vargas-Villarreal J, Romero-Villarreal JB. Molecular detection of cryptic Y-chromosomal material in patients with Turner syndrome. *Oncol Rep*. 2012;28(4):1205-10.
15. Oliveira RM, Verreschi IT, Lipay MV, Eça LP, Guedes AD, Bianco B. Y chromosome in Turner syndrome: review of the literature. *Sao Paulo Med J*. 2009;127(6):373-8.
16. Paulo J, Andrade JGR, Santos AP, Gil-da-Silva-Lopes VL, Guerra-Júnior G, Maciel-Guerra AT. Uso da FISH em mucosa oral para investigação de mosaicismo com linhagem 45,X: estudo com homens saudáveis e pacientes com distúrbios da diferenciação do sexo. *Arq Bras Endocrinol Metab*. 2014;58(4):328-34.
17. Carvalho AB, Guerra-Junior G, Baptista MT, Marques-de-Faria AP, de Lemos-Marini SH, Maciel-Guerra AT. Turner syndrome: a pediatric diagnosis frequently made by non-pediatricians. *J Pediatr (Rio J)*. 2010;86(2):121-5.
18. Neto JM, Marini SHVL, Faria APM, Guerra Júnior G, Guerra ATM. Fatores associados a atraso no diagnóstico de síndrome de Turner. *Rev Paul Pediatr*. 2011;29(1):67-72.
19. Araújo C, Galera BB, Galera MF, Medeiros SF. Características clínicas e citogenéticas da síndrome de Turner na região Centro-Oeste do Brasil. *Rev Bras Ginecol Obstet*. 2010;32(8):381-5.
20. Guimarães MM, Antunes RA. Intercorrências clínicas na síndrome de Turner. *Arq Bras Endocrinol Metab*. 2001;45(4):331-8.
21. Laranjeira C, Cardoso H, Borges T. Síndrome de Turner. *Acta Pediatr Port*. 2010;41(1):38-43.
22. Orbañanos IR, Desojo AV, Martínez-Indart L, Bolado GG, Estevez AR, Echevarria IR. Síndrome de Turner: del nacimiento a la edad adulta. *Endocrinol Nutr*. 2015;62(10):499-506.
23. Gravholt CH, Andersen NH, Conway GS, Dekkers OM, Geffner ME, Klein KO, et al. Clinical practice guidelines for the care of girls and women with Turner syndrome: proceedings from the 2016 Cincinnati International Turner Syndrome Meeting. *Eur J Endocrinol*. 2017;177(3):G1-70.