



ELSEVIER

# The Brazilian Journal of INFECTIOUS DISEASES

www.elsevier.com/locate/bjid



## Original article

# Contribution of different mechanisms to the resistance to fluoroquinolones in clinical isolates of *Salmonella enterica*

Abeer Ahmed Rushdy<sup>a,\*</sup>, Mona Ibrahim Mabrouk<sup>b</sup>, Ferialla Abdel-Hamid Abu-Sef<sup>a</sup>,  
Zeinab Hassan Kheiralla<sup>a</sup>, Said Mohamed Abdel -All<sup>b</sup>, Neveen Mohamed Saleh<sup>b</sup>

<sup>a</sup> College of Women for Arts, Science and Education, Ain Shams University, Cairo, Egypt

<sup>b</sup> National Organization for Drug Control and Research (NODCAR), Cairo, Egypt

## ARTICLE INFO

### Article history:

Received 26 May 2012

Accepted 13 November 2012

Available online 3 June 2013

### Keywords:

*Salmonella*

Fluoroquinolone resistance

Efflux pump

Outer membrane protein

Chromosomal mutations

## ABSTRACT

**Objectives:** To study the potential factors include gene mutation, efflux pump and alteration of permeability associated with quinolone-resistance of *Salmonella enterica* strains isolated from patients with acute gastroenteritis and to evaluate the degree of synergistic activity of efflux pump inhibitors when combined with ciprofloxacin against resistant isolates.

**Methods:** Antimicrobial resistance patterns of fifty-eight *Salmonella* isolates were tested. Five isolates were selected to study the mechanism of resistance associated with quinolone group, including mutation in topoisomerase-encoding gene, altered cell permeability, and expression of an active efflux system. In addition, the combination between antibiotics and efflux pump inhibitors to overcome the microbial resistance was evaluated.

**Results:** Five *Salmonella* isolates totally resistant to all quinolones were studied. All isolates showed alterations in outer membrane proteins including disappearance of some or all of these proteins (Omp-A, Omp-C, Omp-D and Omp-F). Minimum inhibitory concentration values of ciprofloxacin were determined in the presence/absence of the efflux pump inhibitors: carbonyl cyanide m-chlorophenylhydrazone, norepinephrin and trimethoprim. Minimum inhibitory concentration values for two of the isolates were 2–4 fold lower with the addition of efflux pump inhibitors. All five *Salmonella* isolates were amplified for *gyrA* and *parC* genes and only two isolates were sequenced. *S. Enteritidis* 22 had double mutations at codon 83 and 87 in addition to three mutations at *parC* at codons 67, 76 and 80 whereas *S. Typhimurium* 57 had three mutations at codons 83, 87 and 119, but no mutations at *parC*.

**Conclusions:** Efflux pump inhibitors may inhibit the major AcrAB-TolC in *Salmonella* efflux systems which are the major efflux pumps responsible for multidrug resistance in Gram-negative clinical isolates.

© 2013 Elsevier Editora Ltda. All rights reserved.

\* Corresponding author at: Asmaa Fahmy Street Heliopolis, 11586 Cairo, Egypt.

E-mail address: abeerahmedr@gmail.com (A.A. Rushdy).

1413-8670/\$ – see front matter © 2013 Elsevier Editora Ltda. All rights reserved.

<http://dx.doi.org/10.1016/j.bjid.2012.11.012>

## Introduction

*Salmonella enterica* is a bacterial pathogen that causes a variety of diseases in humans, including gastroenteritis, bacteremia, and typhoid fever.<sup>1</sup> Antimicrobial agents are not usually used for the treatment of salmonellosis but can be life-saving in case of severe or systemic infection.<sup>2</sup> Quinolones and fluoroquinolones are broad spectrum antibacterial agents commonly used in both clinical and veterinary medicine. They are a group of synthetic antimicrobial agents with excellent activity against Enterobacteriaceae. However, the number of quinolone-resistant isolates has increased in recent years and such resistance can counteract the efficacy of antimicrobial therapy.<sup>3,4</sup> The global increase in the prevalence of *Salmonella* strains with reduced susceptibility to quinolones constitutes a major concern, since these pathogens have been associated with a significant burden of hospitalization and mortality and with clinical failures of therapy.<sup>5-7</sup>

Quinolone resistance in Gram-negative pathogens is usually acquired by chromosomal mutations, primarily in the quinolone resistance-determining regions (QRDRs) of the target genes, *gyrA* and *gyrB*, which encode DNA gyrase, and *parC* and *parE*, which encode topoisomerase IV.<sup>8</sup> Quinolones act by inhibiting the action of type II topoisomerases, DNA gyrase and topoisomerase IV.<sup>9</sup> Resistance can also be acquired by minimizing the accumulation of the antimicrobial agent in the cell by either one or both of the following mechanisms: altered expression of porins leading to decreased penetration of fluoroquinolones within bacteria or increased efflux of quinolones from the bacterial cell due to overexpression of the AcrAB-TolC efflux pump that acts synergistically with the outer membrane mutation.<sup>3,10</sup>

Efflux pumps that contribute to resistance to many classes of antimicrobial agents, including fluoroquinolones, have been described in a number of clinically important bacteria such as *Salmonella*, *Escherichia coli*, *Pseudomonas aeruginosa* and others.<sup>2</sup> Pumps may be specific for one substrate or may transport a range of structurally dissimilar compounds (including antibiotics of multiple classes); such pumps can be associated with multiple drug resistance (MDR). In the prokaryotic kingdom there are five major families of efflux transporter.<sup>2,11</sup> Most of the multidrug transporters belonging to the RND family interact with a membrane fusion protein (MFP) and an outer membrane protein (OMP) to allow drug transport across both the inner and the outer membranes of Gram-negative bacteria.<sup>12</sup> The RND efflux pump AcrAB-TolC in Enterobacteriaceae and homologues thereof in other Gram-negative bacteria is the system most commonly associated with innate and acquired chromosomally mediated MDR. Clinical isolates that overexpress efflux pumps usually overproduce this pump and there is an association of MDR mediated by efflux with prior use of fluoroquinolones.<sup>4</sup> Due to the lack of new antibacterial agents, there is considerable interest in restoring the activity of older antimicrobial compounds. One way to do this is to inhibit the action of MDR efflux pumps that confer innate resistance to these older agents; this is an area of active drug development by pharmaceutical companies.<sup>13</sup> In order to overcome resistance due to overexpressions of efflux pump, efflux pump inhibitors (EPIs) were used by different

functions,<sup>4</sup> some of these EPIs affect antibiotic efflux not by inhibiting the pump but rather by competing favorably with the antibiotic for extrusion.<sup>14</sup>

The goal of this study was to determine the resistance mechanism to fluoroquinolones in *Salmonella* isolates and investigate the association of quinolone resistance with mutations in the genes encoding for DNA gyrase and topoisomerase IV of *S. enterica*, with the study of quinolones efflux from the bacterial cell and permeability alteration. In addition, to study the use of efflux pump inhibitors to increase the accumulation of fluoroquinolones in *Salmonella*.

## Materials and methods

### Bacterial isolates

The bacterial strains used in this study were collected from Clinical Microbiological Laboratory of three hospitals in Cairo, Egypt along a period of eighteen months (from July 2008 through December 2009). One hundred isolates were obtained from a culture of either blood or stool from individual patients with acute gastroenteritis. *Salmonella* isolates were selected using standard selective and differentiated media, biochemical tests, and serological test based on standard criteria. *S. enterica* serovar Typhimurium ATCC 14028 was used as a reference strain.

### Antibacterial susceptibility testing

Antimicrobial resistance patterns of fifty-eight (58) *Salmonella* isolates selected out of 100 samples were tested, using different antimicrobial agents, by the agar disk diffusion method. Bacteria were grown until they reached a final inoculum of  $5 \times 10^5$  CFU/mL as compared to 0.5 McFarland standard then streaked on Mueller-Hinton agar (Difco). Used antimicrobial disks ( $\mu\text{g}/\text{disc}$ ) (Oxoid, UK) included ampicillin (AMP, 10  $\mu\text{g}$ ), oxacillin (OX, 1  $\mu\text{g}$ ), cefotaxime (CTX, 30  $\mu\text{g}$ ), ceftazidime (CAZ, 30  $\mu\text{g}$ ), cefpime (FEP, 30  $\mu\text{g}$ ), amoxicillin/clavulanic acid (AMC, 30  $\mu\text{g}$ ), as  $\beta$ -lactam group; levofloxacin (LEV, 5  $\mu\text{g}$ ), ofloxacin (OFX, 5  $\mu\text{g}$ ), norfloxacin (NOR, 30  $\mu\text{g}$ ), ciprofloxacin (CIP, 5  $\mu\text{g}$ ) and nalidixic acid (NA, 30  $\mu\text{g}$ ) as fluoroquinolones group and streptomycin (S, 10  $\mu\text{g}$ ), gentamycin (GN, 10  $\mu\text{g}$ ) and amikacin (AK, 30  $\mu\text{g}$ ) as aminoglycosides group. Plates were incubated at 37 °C for 24 h. *Salmonella* isolates were defined as sensitive, intermediate or resistant based on the size of the inhibition zone according to breakpoints established by CLSI documents.<sup>15</sup>

### Preparation and analysis of outer membrane proteins (OMPs)

Five multidrug resistant, especially to fluoroquinolones group, clinical isolates of *S. enterica* were selected for genetic study. Outer membrane protein was obtained from an exponential phase culture as described by Miró et al.<sup>16</sup> Bacteria were separated by centrifugation ( $5000 \times g$ , 4 °C, 15 min) and were subsequently sonicated. Cell envelopes were recovered by centrifugation ( $5000 \times g$ , 4 °C, 15 min) and treated with laurylsarcosinate (Sigma). OMPs were obtained by means of

an additional centrifugation step (13,000 × g, 4 °C, 60 min). OMPs extracts were solubilized in sample buffer (final concentration: 10 mg/mL) submitted to sodium dodecyl sulphate polyacrylamide gel electrophoresis (SDS-PAGE) and stained using Coomassie blue, then the proteins band analyzed using Gel Pro Analyzer V. 3.0 to determine the molecular weights and amount of protein bands.

### Detection of active efflux pump systems

A variety of methods has been used to identify active efflux systems in bacteria, such as fluorometric assays or the determination of the minimum inhibitory concentration (MIC) for fluoroquinolones group in the presence of compounds known to modulate the activity of efflux pumps (as efflux pump inhibitors, EPIs)

The Ethidium Bromide-agar Cartwheel (EtBrCW) method proved to be a valuable tool for the rapid and simple screening of efflux pump activity,<sup>17</sup> for five clinical isolates of selected MDR *S. enterica*. Briefly, each culture was swabbed onto TSA plates containing EtBr concentrations ranging from 0.1 to 0.5 mg/L (0.1 mg/L increments). The plates were incubated at 37 °C for 16 h, after which the minimum concentration of EtBr associated with the bacterial mass that produced fluorescence under UV light using transilluminator of 312 nm (Model LMS-20E, USA) was determined.

To assess the activity of AcrAB efflux pumps, minimal inhibitory concentrations (MICs) of ciprofloxacin were performed by microtiter plate method alone and in the presence of different putative efflux pump inhibitors (EPIs): carbonyl cyanide m-chlorophenylhydrazone (CCCP), norepinephrine (NOR) and trimethoprim (TMP) (Sigma, St. Louis, USA). MICs at concentrations ranging from 0.125 to 512 µg/mL were determined for five selected *Salmonella* isolates. All antibiotics and efflux pump inhibitors were used according to the manufacturer's instructions.

### Detection of target gene mutations

Five clinical isolates of *S. enterica* were used to obtain *in vitro* FQR and two of them were selected for detection of target gene mutation. Polymerase chain reaction (PCR) amplification was carried out to detect the presence of gyrase and Topo IV enzymes in *Salmonella*. DNA sequencing detects mutations in the quinolone resistance determining regions (QRDRs) of the *gyrA* and *parC* genes. Amplification was carried out using PAPD-PCR cycling program in thermal cyclers (Techne-TC-512 PTC-100:M). The primers (Sigma-Aldrich, USA) were designed according to Eaves et al.,<sup>18,19</sup> and were used for PCR amplification and sequencing as listed in Table 1 which includes all bases previously detected as mutation hot spots.

PCR products were extracted and purified using DNA gel extraction kit (Montage, Millipore) and sequencing was performed by Jena Gen GmbH Biotechnologie-Gentechnik-Diagnostik (Jena, Germany) using the BigDye™ Cycle Sequencing Kit (Applied Biosystems, Weiterstadt, Germany) on a 3130 sequencer (Applied Biosystems).

The results were analyzed using Bioedit software version 7.0 where the nucleotides of *gyrA* and *parC* from QRDR were

**Table 1 – Oligonucleotide primers used for amplification of QRDR for the RAPD PCR assay and sequencing of *gyrA* and *parC* genes.**

Primer	Primer (5'-3')	Amplicon size	Length
<i>gyrA</i>			
Fw	CGTTGGTGACGTAATCGGT	251 bp	70-152
Rv	CCGTACCGTCATAGTTATC		
<i>parC</i>			
Fw	CTATGCGATG TCAGAGCTGG	270 bp	47-133
Rv	TAACAGCAGCTCGGCGTATT		
Fw, forward; Rv, reversible; bp, base pair.			

compared to nucleotides of *Salmonella* isolates in GenBank accession nos. X78977 and AE008878, respectively.

## Results

Fifty-eight (58%) out of the 100 isolates collected from the three hospitals were identified by microscopic examination, selective and differential media, biochemical tests and serological test as *S. enterica*. Out of the 58% *Salmonella* isolates, 41.3% represented *S. Typhimurium*, 27.58% *S. Enteritidis*, 5.17% *S. Typhi*, 3.44% both *S. Paratyphi A* and *B*, and 18.96% other *Salmonella*. All *Salmonella* isolates were assayed for resistance to antibacterial agents of three groups. Only five (8.62%) among the tested strains appeared to be totally resistant to all antibacterial agents of the quinolone and fluoroquinolone groups and to most of the agents of the two other groups (Table 2). The five resistant isolates were *S. enterica* serovar *Typhimurium* number 7, 54 and 57 (S-7, S-54 and S-57) and *S. enterica* serovar *Enteritidis* number 22 (S-22) and *S. Typhi* number 49 (S-49).

In the present study OMP expression was altered in the five multidrug resistant *Salmonella* isolates, based on electrophoretic mobility (Table 3), and the reference strain *S. Typhimurium* ATCC 14028 had OmpA, OmpC, OmpD and OmpF. Expression of Omp-F was lost in all isolates except in *S. Typhimurium* (S-7), while OmpD was expressed in *S. Typhimurium* (S-57) only. The isolates *S. Typhimurium* (S-54) and *S. Enteritidis* (S-22) did not show the major non-specific outer membrane proteins. Quinolone MIC for the former isolate was higher than for the other four isolates. *Salmonella Typhi* (S-49) had lower quinolone MIC than the four other isolates (Table 3); it had two bands corresponding to OmpA and OmpC. Also, the major non-specific outer membrane protein with the molecular weight of 49 kDa was detected in all multidrug resistant *Salmonella* isolates.

The application of EtBrCW method allowed for the selection of two EtBrCW-positive (isolates S-22 and S-57) isolates, whereas the remaining three isolates were considered to have no or intermediate efflux activity. Based upon these results, we continued the study by further analyzing the two EtBrCW-positive isolates.

Three compounds of efflux pump inhibitors (EPI) were used to decrease the MIC<sub>CIP</sub> by two different mechanisms: carbonyl cyanide m-chlorophenylhydrazone (CCCP) (inhibition of proton-motive force driven efflux pumps),<sup>21,22</sup> norepinephrine (NOR) and trimethoprim (TMP) (inhibits specific RND efflux pumps) and is known to be active against the AcrAB-TolC

**Table 2 – Antimicrobial susceptibility of selected five multidrug resistant *Salmonella* isolates according to CLSI (2012).**

Antibiotics	<i>Salmonella</i> isolates				
	S. Tm 7	S. En 22	S. Ty 49	S. Tm 54	S. Tm 57
<i>Aminoglycosides</i>					
Streptomycin (S)	R	S	R	R	R
Gentamycin (GN)	R	R	R	R	R
Amikacin (AK)	R	R	R	R	I
<i>β-Lactams</i>					
Ampicillin (AMP)	R	R	R	R	R
Amoxicillin/clavulanic acid (AMC)	R	R	R	R	R
Oxacillin (OX)	R	R	R	R	R
Cefotaxime (CTX)	R	R	I	R	R
Ceftazidime (CAZ)	R	R	S	R	S
Cefipime (FEP)	R	R	R	R	R
<i>Quinolones and fluoroquinolones</i>					
Ciprofloxacin (CIP)	R	R	R	R	R
Levofloxacin (LEV)	R	R	R	R	R
Ofloxacin (OFX)	R	R	R	R	R
Norfloxacin (NOR)	R	R	R	R	I
Nalidixic acid (NA)	R	R	R	R	R

Susceptible, intermediate and resistant phenotypes, from CLSI breakpoints.

**Table 3 – Major OMP of five multidrug resistant *Salmonella* isolates.**

Isolate no.	Serovar	MICs (μg/mL)	Protein content (μg/mL)			
			OmpA	OmpC	OmpD	OmpF
Sensitive strain	<i>S. Typhimurium</i> ATCC 14028	–	6.52	5.35	5.22	6.64
S-7	<i>S. Typhimurium</i>	64	–	–	–	3.16
S-22	<i>S. Enteritidis</i>	256	–	–	–	–
S-49	<i>S. Typhi</i>	32	2.23	2.89	–	–
S-54	<i>S. Typhimurium</i>	>512	–	–	–	–
S-57	<i>S. Typhimurium</i>	512	–	–	1.51	–

MIC, minimum inhibitory concentration; Omp, outer membrane protein.

transporters.<sup>4</sup> MIC<sub>CIP</sub> determined in absence of EPIs were compared with those determined in presence of efflux inhibitors. The results showed twofold or more reduction in MIC levels (Table 4) for the two multidrug resistant *Salmonella* isolates (EtBrCW-positive isolates) tested.

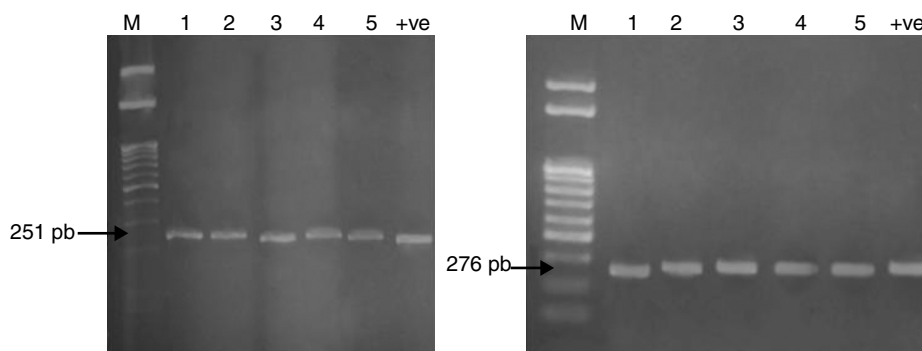
As ciprofloxacin is a substrate of many efflux pumps in different bacterial species,<sup>23</sup> the study focused upon usage of compounds that displayed synergistic activity with ciprofloxacin. So the use of the EPIs like CCCP, trimethoprim and norepinephrine in combination with antibiotic revealed

**Table 4 – MICs values of different EPIs used against quinolone resistant *Salmonella* isolates and molecular characterization of QRDR region of *gyrA* and *parC* gene.**

Isolate no.	Serovar	QRDR mutation		MICs (μg/mL)			
		<i>gyrA</i>	<i>parC</i>	CIP			
				NO EPI	+ CCCP	+ NOR	+ TMP
S22	<i>S. Enteritidis</i>	Ser83Phe Asp87Ser	Ser67Cys Arg76Cys Cys80Arg	256	32 (–3)	64 (–2)	16 (–4)
S57	<i>S. Typhimurium</i>	Ser83Phe Asp87Gly Ala119Ser	No mutation	512	128 (–2)	32 (–4)	64 (–3)

Amino acids: serine (Ser), phenylalanine (Phe), aspartic acid (Asp), glycine (Gly), arginine (Arg), alanine (Ala), cysteine (Cys), ciprofloxacin (CIP), carbonyl cyanide *m*-chlorophenylhydrazine (CCCP), norepinephrine (NOR), trimethoprim (TMP), efflux pump inhibitor (EPI), quinolone resistance determining region (QRDR).

Numbers in parenthesis represent the numbers of fold decrease.



**Fig. 1 – QRDR amplification of *gyrA* (251 bp) and *parC* (276 bp) from DNA of five *Salmonella* isolates.**

synergistic antibacterial activity for improving and potentiating the activity of antibiotics.

The mechanism of resistance to fluoroquinolones is caused by mutations in a region of the *gyrA* gene resulting in amino acid changes between amino acid positions 67 and 106. This region has been termed the quinolone resistance-determining region (QRDR). The QRDR of *gyrA* (251 bp) and *parC* (276 bp) was amplified for the five multidrug resistant *Salmonella* isolates as represented in Fig. 1 to detect the presence of these genes and confirm the identification of the five *Salmonella* isolates.

The QRDR of the genes *gyrA* and *parC* of two selected QR *Salmonella* isolates (S22 and S57) were tested for mutations by DNA amplification and sequencing. Results revealed that *S. Enteritidis* (S-22) and *S. Typhimurium* (S-57) contained double mutation at codon 83 (Ser83-Phe) and codon 87 (Asp87-Ser in S22 or Gly in S57). One novel mutation was detected in *S. Typhimurium* (S-57) inside QRDR, Ala-119, in which G-T led to the substitution of alanine to serine (Ala119-Ser); while in *S. Enteritidis* (22) there is seven mutations within QRDR from codon (115-122) and other mutations outside QRDR. The 251-nucleotide fragment of *gyrA* and 270 nucleotide fragment of *parC* that were amplified from the quinolone-resistant *S. Typhimurium* (S-57) and *S. Enteritidis* (S-22) had over 70% and 50% identity with the same fragment from the reference strain (X78977) and reference strain (AE008878), respectively. Other mutations found in different positions did not seem to have clinical significance.

## Discussion

The occurrence of antibiotic-resistant bacteria of all genera increased recently. The scientific community should, therefore, perform routine surveillance of microbial population to determine the extent of antibiotic resistance in order to provide suitable treatment guidelines.

Davin-Regli et al. and O'Regan et al. found that the loss of one OMPs or the decrease in its amount compared with the parent strain cause a high resistance rate in *Salmonella* isolates.<sup>25,26</sup> This was also seen here in the five tested *Salmonella* isolates. Miró et al. discussed the relevance of protein losses to resistance to  $\beta$ -lactams and quinolones, stating that the expression of the other porin presumably allows for

sufficient penetration of antimicrobial agents to inhibit the microorganism as shown in *Klebsiella pneumoniae* and *E. coli*.<sup>16</sup>

Ruiz et al. stated that analysis of OMPs and lipopolysaccharides from quinolone-susceptible and quinolone-resistant clinical isolates showed no porin changes.<sup>27</sup> Hamid and Jain reported that isolates which contain the non-specific outer membrane protein with the molecular weight of 49 kDa may be used as a vaccine for protection against typhoid.<sup>28</sup>

Efflux pumps are transport proteins involved in the extrusion of toxic substrates (including virtually all classes of clinically relevant antibiotics) from within cells into the external environment.<sup>29</sup> Efflux activity was assessed by means of a fast and practical test, the Ethidium Bromide-agar Cartwheel (EtBrCW), which provides information on the capacity of each isolate to extrude EtBr from the cells by efflux, on the basis of the fluorescence emitted by cultures swabbed in EtBr-containing agar plates.

The outer membrane modification acts synergistically with enhanced active efflux systems to affect the level of the intrinsic and the acquired antibiotic resistance of Gram-negative bacteria as stated by Nikaido.<sup>30</sup> The smallest concentration of EtBr that produces fluorescence of the bacterial mass represents the highest concentration of EtBr that the bacteria can extrude, consequently producing fluorescence is significantly greater. The concentration of EtBr needed to produce fluorescence of the bacterial mass is considerably higher than that concentration which produces fluorescence of the wild-type strain.<sup>31</sup>

Several chemical families of EPIs have now been described and characterized.<sup>20</sup> Among them several inhibitor compounds display an efficient activity and inhibit the major AcrAB-TolC in *Salmonella* efflux systems which are the major efflux pumps responsible for MDR Gram-negative clinical isolates. The NOR and TMP have structure analog as phenyl-arginine- $\beta$ -naphthylamide (PA $\beta$ N). PA $\beta$ N is routinely used in the laboratory as a screen to indicate efflux-mediated antibiotic resistance in Gram-negative bacteria. However, PA $\beta$ N is not used in the clinical setting due to toxicity and bioavailability issues, but NOR and TMP are already licensed for use in man.<sup>4,32</sup>

The twofold or greater reduction in MIC levels obtained here for the two multidrug resistant *Salmonella* isolates confirm the presence of an active efflux component in those isolates.<sup>4,33</sup> Piddock et al.<sup>4</sup> found the MIC values of

ciprofloxacin to be 2–4 fold reduced in the presence of trimethoprim for wild-type strains of *Salmonella* Typhimurium and NCTC type strains of *Enterobacter cloacae*, *Serratia marcescens*, *P. aeruginosa*, *K. pneumoniae* and *E. coli*. However, no synergy was seen between trimethoprim and ciprofloxacin for strains of *Salmonella* Typhimurium in which *acrA*, *acrB*, *acrAB* or *tolC* were inactivated. Also Keddy et al. found that in the presence of EPIs, the MIC of ciprofloxacin decreased by twofold, and the MIC of nalidixic acid decreased by fivefold, establishing the involvement of an efflux pump in conferring quinolone resistance.<sup>34</sup> TMP and NOR were the most effective inhibitors in reducing MIC values. While CCCP showed less effect on MIC values for the compounds tested, this result provided evidence for an active efflux process that uses the proton motive force as energy source.<sup>21,22</sup> However, no full reversion of the ciprofloxacin resistance phenotype was obtained with any of the EPIs tested, suggesting the contribution of other mechanisms to this resistance, namely, mutations in the target genes.

The main mechanism of resistance to fluoroquinolones in Gram-negative bacteria is caused by mutations in genes coding for DNA-gyrase (*gyrA* and *gyrB*) and topoisomerase IV (*parC* and *parE*).<sup>24</sup> Results of the test for mutations, by DNA amplification and sequencing the QRDR of the genes *gyrA* and *parC* of two selected QR *Salmonella* isolates (S22 and S57) agree with those of Guerra et al.,<sup>35</sup> Marimón et al.,<sup>33</sup> and Chen et al.<sup>2</sup> Griggs et al. suggested that other mutations could be present in the *gyrA* genes of these isolates, outside of the region of the sequenced gene, and that the Ala119 mutation is not involved in quinolone resistance.<sup>36</sup> Eaves et al. found novel mutations inside QRDR at codon Asp72, Asp82 and Ala119 and also outside the QRDR, but within the amplified region of DNA.<sup>18</sup>

Amino acid changes at Ser-83 (to Phe, Tyr or Ala) or at Asp-87 (to Gly, Asn or Tyr) are the most frequently observed in nalidixic acid-resistant strains.<sup>37</sup> Double mutations at both residues 83 and 87 have been identified in clinical isolates of *S. Typhimurium* DT204 showing high-level resistance to fluoroquinolones.<sup>35</sup> Nonetheless, O'Regan et al. stated that there is a single *gyrA* mutation (D87Y) present in all strains showing high-level nalidixic acid resistance.<sup>26</sup> Hirose et al.<sup>39</sup> and Dimitrova et al.<sup>38</sup> demonstrated that single point mutation in QRDR of *gyrA* led to decreased susceptibility to ciprofloxacin in *Salmonella* isolates. There is also three amino acid substitution in *parC* at codon Ser67-Cys, Arg76-Cys and Cys80-Arg in *S. Enteritidis* (S-22), in agreement with results obtained by Choi et al. and Wu et al.<sup>40,41</sup> However, in *S. Typhimurium* S-57 and the in wild strains no amino acid mutation in *parC* gene has been reported. It is unlikely that this mutation contributes to quinolone resistance. This indicates that this substitution is likely to be a polymorphism not common in resistant strains of *Salmonella*.

Obtained data showed that *S. Typhimurium* (S-57) has high MIC<sub>CIP</sub> with mutations in only *gyrA*, while *S. Enteritidis* (S-22) has lower MIC<sub>CIP</sub> with mutation in *gyrA* and *parC*. These results clearly suggest that *parC* mutations are not necessary to generate high level resistance to ciprofloxacin. In this respect Eaves et al.<sup>19</sup> found that isolates with a mutation in both *gyrA* and *parC* were more susceptible to ciprofloxacin than were isolates with a mutation in *gyrA* alone. Previous studies<sup>42</sup> have demonstrated that changes in topoisomerases

are insufficient to explain the level of resistance to quinolones in *S. enterica*. In agreement with this observation, Miró et al.<sup>16</sup> showed that multiple resistance mechanisms were involved in the strains including changes in topoisomerases, altered permeability, and expression of an active efflux. Our results showed that multiple resistance mechanisms were involved in the strains including changes in topoisomerases, as shown in double mutation at both codons 83 and 87 in gene *gyrA* and mutation inside QRDR in both isolates and three mutations in *parC* only in *S. Enteritidis*, altered permeability, and expression of an active efflux.

## Conclusion

The data obtained in this work strongly suggest the importance of mutations in gyrase and topoisomerase in quinolone resistance development in *Salmonella*, although other factors such as overexpression of efflux pumps can play a complementary role. Additionally, our study underscores the importance of using EPI (NOR and TMP) to inhibit the major AcrAB-TolC in *Salmonella* efflux systems which are the major efflux pumps responsible for MDR Gram-negative clinical isolates. MDR and fluoroquinolone-resistance in *Salmonella* recovered from patients are common in Egypt, and monitoring antimicrobial resistance of foodborne pathogens should be an important component of the surveillance system to improve public health.

## Conflict of interest

The authors declare no conflict of interest.

## REFERENCES

- Scherer CA, Miller SI. Molecular pathogenesis of *Salmonella*. In: Groisman EA, editor. Principles of bacterial pathogenesis. New York: Academic Press; 2001. p. 266–333.
- Chen S, Cui S, McDermott PM, et al. Contribution of target gene mutations and efflux to decreased susceptibility of *Salmonella enterica* serovar Typhimurium to fluoroquinolones and other antimicrobials. *Antimicrob Agents Chemother*. 2007;51:535–42.
- Soto SM, Ruiz J, Mendoza MC, Vila J. In vitro fluoroquinolone-resistant mutants of *Salmonella enterica* serotype Enteritidis: analysis of mechanisms involved in resistance. *Int J Antimicrob Agents*. 2003;22:537–40.
- Piddock LJV, Garvey MI, Rahman MM, Gibbons S. Natural and synthetic compounds such as trimethoprim behave as inhibitors of efflux in Gram negative bacteria. *J Antimicrob Chemother*. 2010;65:1215–23.
- Rupali P, Abraham OC, Jesudason MV, et al. Treatment failure in typhoid fever with ciprofloxacin susceptible *Salmonella enterica* serotype Typhi. *Diagn Microbiol Infect Dis*. 2004;49:1–3.
- Molbak K. Human health consequences of antimicrobial drug-resistant *Salmonella* and other foodborne pathogens. *Clin Infect Dis*. 2005;41:1613–20.
- Nikaido E, Yamaguchi A, Nishino K. AcrAB multidrug efflux pump regulation in *Salmonella enterica* serovar Typhimurium by RamA in response to environmental signals. *J Biol Chem*. 2008;283:24245–53.

8. Hopkins KL, Davies RH, Threlfall EJ. Mechanisms of quinolone resistance in *Escherichia coli* and *Salmonella*: recent developments. *Int J Antimicrob Agents*. 2005;25:358-73.
9. Ruiz J. Mechanisms of resistance to quinolones: target alterations, decreased accumulation and DNA gyrase protection. *J Antimicrob Chemother*. 2003;51:1109-17.
10. Singh M, Jadaun GP, Ramdas, et al. Effect of efflux pump inhibitors on drug susceptibility of ofloxacin resistant *Mycobacterium tuberculosis* isolates. *Indian J Med Res*. 2011;133:535-40.
11. Webber MA, Piddock LJV. The importance of efflux pumps in bacterial antibiotic resistance. *J Antimicrob Chemother*. 2003;51:9-11.
12. Zgurskaya HI, Nikaido H. Multidrug resistance mechanisms: drug efflux across two membranes. *Mol Microbiol*. 2000;37:219-25.
13. Lomovskaya O, Bostian KA. Practical applications and feasibility of efflux pump inhibitors in the clinic—a vision for applied use. *Biochem Pharmacol*. 2006;71:910-8.
14. Mahamoud A, Chevalier J, Alibert-Franco AS, Kern WV, Pagès JM. Antibiotic efflux pumps in Gram-negative bacteria: the inhibitor response strategy. *J Antimicrob Chemother*. 2007;59:1223-9.
15. Clinical and Laboratory Standards Institute – CLSI. Performance standard for antimicrobial susceptibility testing. In: Twenty-second information supplement, vol. 32, document M100-S22. Wayne, PA: CLSI/NCCLS; 2012.
16. Miró E, Vergés C, García I, et al. Resistance to quinolones and  $\beta$ -lactams in *Salmonella enterica* due to mutations in topoisomerase encoding genes, altered cell permeability and expression of an active efflux system. *Enferm Infect Microbiol Clin*. 2004;22:204-11.
17. Costa SS, Falcão C, Viveiros M, et al. Exploring the contribution of efflux on the resistance to fluoroquinolones in clinical isolates of *Staphylococcus aureus*. *BMC Microbiol*. 2011;11:241-52.
18. Eaves DJ, Liebana E, Woodward MJ, Piddock LJV. Detection of *gyrA* mutation in quinolone resistant *Salmonella enterica* by denaturing high performance liquid chromatography. *J Clin Microbiol*. 2002;40:4121-5.
19. Eaves DJ, Randall L, Gray DT, Buckley A, Woodward MJ, White AP. Prevalence of mutations within the quinolone resistance determining region of *gyrA*, *gyrB*, *parC*, and *parE* and association with antibiotic resistance in quinolone resistant *Salmonella enterica*. *Antimicrob Agents Chemother*. 2004;48:4012-5.
20. Pagès JM, Amaral L, Fanning S. An original deal for new molecule: reversal of efflux pump activity, a rational strategy to combat gram-negative resistant bacteria. *Curr Med Chem*. 2011;18:2969-80.
21. Pagès JM, Masi M, Barbe J. Inhibitors of efflux pumps in Gram negative bacteria. *Trends Mol Med*. 2005;11:382-9.
22. Viveiros M, Martins M, Couto I, et al. New methods for the identification of efflux mediated MDR bacteria, genetic assessment of regulators and efflux pump constituents, characterization of efflux systems and screening for inhibitors of efflux pumps. *Curr Drug Targets*. 2008;9:760-78.
23. Piddock LJV. Multidrug resistance efflux pumps not just for resistance. *Nat Rev Microbiol*. 2006;4:629-36.
24. Navarro F, Miró E, Mirelis B. Interpretive reading of the antibiogram of enterobacteria. *Enferm Infect Microbiol Clin*. 2002;20:225-34.
25. Davin-Regli A, Bolla JM, James CE, et al. Membrane permeability and regulation of drug “Influx and Efflux” in enterobacterial pathogens. *Curr Drug Targets*. 2008;9:750-9.
26. O'Regan E, Quinn T, Pagés JM, McCusker M, Piddock L, Fanning S. Multiple regulatory pathways associated with high level ciprofloxacin and multidrug resistance in *Salmonella enterica* serovar Enteritidis: involvement of *ramA* and other global regulators. *Antimicrob Agents Chemother*. 2009;53:1080-7.
27. Ruiz J, Castro D, Goni P, Santamaria JA, Borrego JJ, Vila J. Analysis of the mechanism of quinolone resistance in nalidixic acid-resistant clinical isolates of *Salmonella* serotype Typhimurium. *J Med Microbiol*. 1997;46:623-8.
28. Hamid N, Jain SK. Characterization of an outer membrane protein of *Salmonella enterica* serovar Typhimurium that confers protection against typhoid. *Clin Vaccine Immunol*. 2008;15:1461-71.
29. Bambeke VF, Balzi E, Tulkens PM. Antibiotic efflux pumps. *Biochem Pharm*. 2000;60:457-70.
30. Nikaido H. Multiple antibiotic resistance and efflux. *Curr Opin Microbiol*. 1998;1:516-23.
31. Martins M, Couto I, Viveiros M, Amaral L. Identification of efflux-mediated multidrug resistance in bacterial clinical isolates by two simple methods. *Methods Mol Biol*. 2010;642:143-57.
32. Ricci V, Tzakas P, Buckley A, Piddock LJ. Ciprofloxacin-resistant *Salmonella enterica* serovar Typhimurium strains are difficult to select in the absence of AcrB and TolC. *Antimicrob Agents Chemother*. 2006;50:38-42.
33. Marimón JM, Gomáriz M, Zigorraga C, Cilla G, Pérez TE. Increasing prevalence of quinolone resistance in human nontyphoid *Salmonella enterica* isolates obtained in Spain from 1981 to 2003. *Antimicrob Agents Chemother*. 2004;48:3789-93.
34. Keddy KH, Smith AM, Sooka A, Ismail H, Oliver S. Fluoroquinolone resistant Typhoid, South Africa. *Emerg Infect Dis*. 2010;16:879-80.
35. Guerra B, Malorny B, Schroeter A, Helmuth R. Multiple resistance mechanisms in fluoroquinolone-resistant *Salmonella* isolates from Germany. *Antimicrob Agents Chemother*. 2003;47:2059.
36. Griggs DJ, Gensberg K, Piddock LJV. Mutations in *gyrA* gene of quinolone-resistant *Salmonella* serotypes isolated from humans and animals. *Antimicrob Agents Chemother*. 1996;40:1009-13.
37. Cloeckaert A, Chaslus-Dancla E. Mechanisms of quinolone resistance in *Salmonella*. *Vet Res*. 2001;32:291-300.
38. Dimitrova T, Dashti AA, Albaksami O, Udo EE, Jadaon MM, Albert MJ. Ciprofloxacin resistant *Salmonella enteric* serovar Typhi from Kuwait with novel mutations in *gyrA* and *parC* genes. *J Clin Microbiol*. 2009;47:208-11.
39. Hirose K, Hashimoto A, Tamura K, et al. DNA sequence analysis of DNA gyrase and DNA topoisomerase IV quinolone resistance determining regions of *Salmonella enterica* serovar Typhi and serovar Paratyphi A. *Antimicrob Agents Chemother*. 2002;46:3249-52.
40. Choi SH, Woo JH, Lee JE, et al. Increasing incidence of quinolone resistance in human nontyphoid *Salmonella enterica* isolates in Korea and mechanisms involved in quinolone resistance. *J Antimicrob Chemother*. 2005;56:1111-4.
41. Wu W, Wang H, Lu J, et al. Genetic diversity of *Salmonella enteric* serovar Typhi and Paratyphi in Shenzhen, China from 2002 through 2007. *BMC Microbiol*. 2010;10:32-8.
42. Reyna F, Huesca M, González V, Fuchs LY. *Salmonella* Typhimurium *gyrA* mutations associated with fluoroquinolone resistance. *Antimicrob Agents Chemother*. 1995;39:1621-3.