



Genetics and Molecular Microbiology

Rhizobacterial characterization for quality control of eucalyptus biogrowth promoter products

Talyta Galafassi Zarpelon^a, Lúcio Mauro da Silva Guimarães^a, Poliane Alfenas-Zerbini^b, Eli Sidney Lopes^c, Reginaldo Gonçalves Mafía^d, Acelino Couto Alfenas^{a,*}

^a Federal University of Viçosa, Department of Phytopathology, Viçosa, MG, Brazil

^b Federal University of Viçosa, Department of Microbiology, Viçosa, Minas Gerais State, Brazil

^c Bio Soja Indústrias Químicas e Biológicas, São Joaquim da Barra, SP, Brazil

^d Fibria Centro de Tecnologia, Aracruz, ES, Brazil

ARTICLE INFO

Article history:

Received 15 June 2015

Accepted 14 March 2016

Available online 26 July 2016

Associate Editor: Jerri Édson Zilli

Keywords:

Formulation

PGPR

Eucalyptus

Biological product

ABSTRACT

Plant growth-promoting rhizobacteria strains from special formulations have been used to optimize eucalyptus cutting production. To undertake quality control for the formulated products, the rhizobacterial strains should be characterized to assess their purity and authentication. In the present study, we characterized nine strains of rhizobacteria, including three *Bacillus subtilis* (S1, S2 and 3918), two *Pseudomonas* sp. (MF4 and FL2), *P. putida* (MF2), *P. fulva* (Ca), *Frateuria aurantia* (R1), and *Stenotrophomonas maltophilia* (CIIB). The strains were differentiated by colony morphology after 24 h of incubation in three different solid state culture media (glucose-nutritive agar, 523 medium and yeast extract-mannitol agar), sensitivity to a panel of 28 antibiotics (expressed according to the formation of inhibition halos of bacterial growth in the presence of antibiotics), and PCR-RFLP profiles of the 16S rDNA gene produced using nine restriction enzymes. It was possible to differentiate all nine strains of rhizobacteria using their morphological characteristics and sensitivity to antibiotics. The molecular analysis allowed us to separate the strains CIIB, FL2 and R1 from the strains belonging to the genera *Bacillus* and *Pseudomonas*. By using these three methods concomitantly, we were able to determine strain purity and perform the authentication.

© 2016 Published by Elsevier Editora Ltda. on behalf of Sociedade Brasileira de Microbiologia. This is an open access article under the CC BY-NC-ND license (<http://creativecommons.org/licenses/by-nc-nd/4.0/>).

Introduction

Free-living bacteria or bacteria associated with root tissues prevail in the plant rhizosphere.¹ Plant growth-promoting rhizobacteria (PGPR), the benefic group of these microorganisms, are a class of non-pathogenic soil microorganisms.^{2–4}

Rhizobacteria are natural inhabitants of soil that are able to colonize the root systems of plants, thereby contributing several important characteristics. For example, enhanced growth can occur directly through the production of growth promoters, or it can be inhibited by the action of pathogenic microorganisms.⁵

* Corresponding author.

E-mail: aalfenas@ufv.br (A.C. Alfenas).

<http://dx.doi.org/10.1016/j.bjm.2016.07.013>

1517-8382/© 2016 Published by Elsevier Editora Ltda. on behalf of Sociedade Brasileira de Microbiologia. This is an open access article under the CC BY-NC-ND license (<http://creativecommons.org/licenses/by-nc-nd/4.0/>).

PGPR bacteria may directly influence plant growth by either synthesizing plant hormones, such as indol-3-acetic acid (IAA),^{6,7} or favoring the uptake of nutrients from the soil through different mechanisms, such as nitrogen fixation,⁸ phosphorus and potassium solubilization⁹ and the synthesis of siderophores for iron sequestration.¹⁰ PGPR can also indirectly affect plants through antagonism between the bacteria and soil-borne pathogens¹¹ and by inducing systemic resistance in plants against both root and foliar pathogens.

Many studies have explored the biocontrol capacity of these organisms. Additionally, their ability to produce antibiotics makes them a target for the biological control of plant diseases. Strains of rhizobacteria isolated from *Eucalyptus* spp. have been shown to promote rooting through an increase in root biomass and growth of eucalyptus cuttings^{12,13} and the reduction of *Cylindrocladium* cutting rot, rust infection (*Puccinia psidii* Winter) in the nursery,^{14,15} and bacterial wilt (*Ralstonia solanacearum*).¹⁶ Based on the results, a bioproduct named Rizolyptus[®]¹⁷ formulated with selected rhizobacterial strains has been used in eucalyptus cutting nurseries. The Rizolyptus[®] is an inoculant based on only one rhizobacteria strain in a liquid formulation. However, it is essential to know the intrinsic characteristics of each selected growth-promoting rhizobacteria strain prior to mass propagation to ensure the product's quality.

Bacterial characterization is currently based on biochemical tests, antibiotic sensitivity, microscopic observations and molecular analysis. Restriction fragment length polymorphism (RFLP) analysis of the ribosomal DNA region (rDNA) associated with polymerase chain reaction (PCR) is an appropriate and inexpensive molecular method.^{1,2,18-20} Thus, in the present work, we characterized the Rizolyptus[®] production from nine rhizobacterial strains based on their morphology, antibiotic sensitivity, and PCR-RFLP profiles. The findings and methods presented in this study represent important tools to ensure the purity, quality and authentication of strains in the final product Rizolyptus[®] for commercialization.

Material and methods

Rhizobacterium strains

Nine strains of rhizobacteria isolated from eucalyptus that were previously selected for their capacity to promote rooting

and the growth of eucalyptus cuttings¹⁴ were characterized. The strains were identified and coded as follows: S1, S2 and 3918 (*Bacillus subtilis* Cohn); Ca (*Pseudomonas fulva* Lizuga & Komagata); CIIb (*Stenotrophomonas maltophilia* Hugh, Palleroni & Bradbury); R1 (*Frateuria aurantia* Swings et al.); MF2 (*P. putida* Migula); and FL2 and MF4 (*Pseudomonas* sp. Migula). The molecular identification, based on homology (>98%) of the 16S rDNA was performed as previously described.²¹ The cultures of rhizobacteria are stored in the Forest Pathology Laboratory/Bioagro of the Universidade Federal de Viçosa, Minas Gerais, Brazil.

Morphological characterization

The strains were grown on 523 medium,²² yeast extract-mannitol agar (YMA)²³ and glucose-nutritive agar (ANG)²⁴ for 24 h at 28 °C and were characterized according to their colony shape, elevation, edge type (Fig. 1), consistency (i.e., mucosus, fluid or mycelial), aspect of the colony surface (i.e., smooth or rough), brightness (i.e., bright, translucent or opaque), color, size (i.e., <1 mm, 1–2 mm, 2–3 mm or >3 mm), and growth speed (i.e., very fast: visible to the naked eye after less than 24 h of incubation; fast: visible within 24–48 h; intermediate: visible within 24–48 h; slow: visible within 36–96 h; or very slow: visible only after 96 h).

Antibiotic sensitivity

Strain sensitivity to 28 antibiotics was assessed using the standard antibiogram method.²⁵ An inoculum sample of 0.1 mL was evenly spread in a Petri dish (9 cm diameter) containing 523 medium, and four Whatman[®] No.1 filter paper disks (Ø = 0.7 cm) that were previously soaked in the antibiotics to be tested were distributed over the medium. A completely random design containing three replicates per antibiotic was used. After a 48-h incubation, the presence or absence of an inhibition halo was observed.

Molecular characterization

Genomic DNA from the rhizobacterial strains²⁶ was amplified by a PCR reaction consisting of 10–20 ng DNA, 2 mM MgCl₂, 50 mM KCl, 10 mM Tris-HCl (pH 8.3), 0.1 mM of each deoxynucleotide (dATP, dTTP, dCTP and dGTP) (Invitrogen), 0.1 µM of

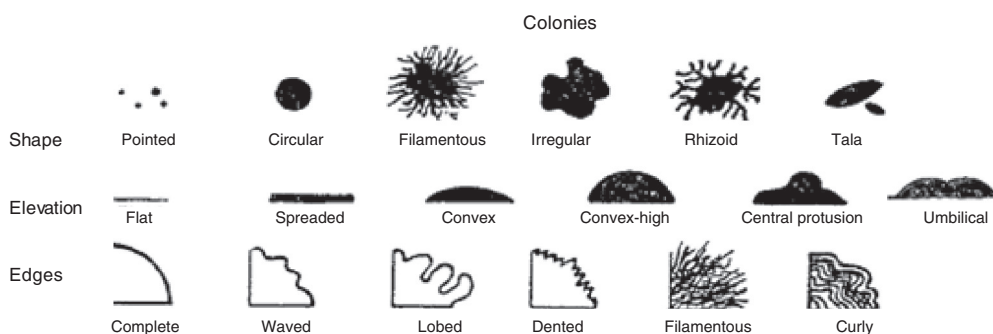


Fig. 1 – Patterns used for the morphological characterization of rhizobacterial strains based on their colony shape, elevation and edge type.

Source: Adapted from Coon et al.³⁶

each oligonucleotide, 1 unit of *Taq* polymerase (Phonectria) enzyme and sterile water (MilliQ) to reach the final volume of 50 μ L. The specific oligonucleotides P1 (5'-AGA GTT TGA TCC TGG CTC AG-3') and P2 (5'-AAG GAG GTG ATC CAG CCG CA-3')²⁷ were used to amplify a fragment of approximately 1.6 kb from the bacterial 16S rDNA 16S region. The amplification was performed in a Mastercycler[®] thermocycler (Eppendorf) under the following conditions: 94 °C for 3 min, then 35 cycles comprising 1 min at 94 °C, 30 s at 60 °C and 1 min and 30 s at 72 °C, and a final extension at 72 °C for 7 min. Subsequently, 15 μ L of the amplified product was cleaved separately with the *Eco*RI, *Rsa*I, *Sau*3AI, *Sph*I, *Msp*I, *Bam*HI, *Dde*I, *Taq*I and *Hin*fI restriction enzymes. A volume of 1 μ L of restriction enzyme in 3 μ L of 10 \times buffer was added to the amplified product and incubated under the specific time and temperature conditions recommended for each enzyme by the manufacturer (Promega). The cleaved fragments were separated in an agarose gel (1.2%) and photodocumented.

Results

Morphological characterization

The morphological characterization varied according to the culture medium (523, YMA, or ANG) and the rhizobacterial strain assessed. The colony color in 523 medium allowed for the differentiation of eight of the nine strains tested, whereas the colony elevation in ANG medium allowed for the differentiation of six strains (Table 1). All of the strains could be differentiated on 523 medium when these two characteristics were combined. Consistency, surface, and growth speed provided minor contributions to the differentiation of the assessed rhizobacterial strains (Table 1).

The R1 strain was differentiated from the others by its fast growth (within 24 h) following incubation in all three growth media (Table 1). Colonies of the CIIb isolate differed from the others based on their pointed shape and colony size of less than 1 mm in the three media tested. Although the S1, S2 and 3918 strains belong to *B. subtilis*, they were individually differentiated by their color in 523 medium and by their edge shape in ANG and YMA media (Table 1). These strains were separated from the others by their brightness in ANG and YMA media and by their surface characteristics in YMA medium. The Ca, FL2, MF2 and MF4 strains were differentiated from the others by colony color. Additionally, FL2 was the only strain that showed a translucent brightness in the three culture media evaluated (Table 1).

Antibiotic sensitivity

Pefloxacin was the only antibiotic tested that inhibited all of the rhizobacterial strains (Table 2). All of the remaining antibiotics inhibited at least one strain. The S2 and R1 strains were the most sensitive to the antibiotics tested and were resistant to only two (penicillin and cephalixin) and three (oxacillin, rifampicin, and aztreonam) antibiotics, respectively. In contrast, FL2 was the least sensitive, with only five antibiotics (pefloxacin, pipemidic acid, streptomycin, tetracycline, and sulfonamide) inhibiting its growth. The MF2 and FL2 strains

were easily separated from each other and the other strains using a single antibiotic (e.g., sulfonamide and amikacin, respectively). A minimum of two antibiotics were required to distinguish between the S1, CIIb, and MF4 strains (e.g., for the 1st strain: ceftazidime and tetracycline; 2nd strain: streptomycin and neomycin; and 3rd strain: amoxicillin and rifampicin). The other strains could be distinguished using at least three antibiotics sequentially in the culture medium (e.g., for S2: cephalixin, sulphazotrim, and streptomycin; 3918: ampicillin, sulfonamide, and neomycin; and Ca: clindamycin, sulfonamide, and amikacin).

Molecular characterization

The amplification of 16S rDNA generated fragments approximately 1.6 kb in size for all strains. The cleavage for these fragments with restriction enzymes allowed us differentiate two groups of strains (*Bacillus* (3918, S1, and S2) and *Pseudomonas* (MF2, MF4, and Ca)), from the remaining strains (Fig. 2). However, it was not possible to distinguish strains from the same genus. All of the other strains could be differentiated from each other using at least one restriction enzyme. CIIb was the most unique among the tested strains, with six of the nine tested enzymes resulting in restriction profiles that allowed for its separation from the other strains. Although Ca and FL2 belong to the same genus, they were easily differentiated by cleavage with the *Sau*3AI, *Msp*I, *Dde*I, *Bam*HI, and *Taq*I enzymes. These rhizobacteria belong to different species of *Pseudomonas*, which makes their identification easier; similar results were observed for *Stenotrophomonas maltophilia* (CIIb) and *Frateuria aurantia* (R1). The *Msp*I enzyme allowed us to discern more strains, separating *Bacillus* (3918, S1, and S2), *Pseudomonas* (MF2, MF4, and Ca), FL2, R1, and CIIb. In contrast, the use of *Bam*HI only differentiated FL2 from the other strains. The remaining enzymes allowed us to separate the strains into 3–5 groups (Fig. 2).

Discussion

The use of pre-selected bacterial strains to induce rooting and growth of eucalyptus cutting requires authentication of the rhizobacteria employed in the formulated product (Rhizolyptus[®]) without mixture between the strains of rhizobacteria or contamination. In this study, we characterized nine strains of rhizobacteria based on their morphology, antibiotic sensitivity, and PCR-RFLP profiles.

All strains were distinguished based on their morphological characteristics in culture and sensitivity to 28 antibiotics. Their morphological characteristics varied according to the culture medium and strain used. Color and colony elevation in 523 medium were the most efficient morphological features for strain identification, allowing the differentiation of all rhizobacterial strains studied. However, the use of these characteristics demanded expertise and skill to distinguish subtle differences among the strain colonies. Special care was also required to recognize intermediate shapes that may hamper the accuracy of the identification. Therefore, adding antibiotics to the culture medium could aid in the identification of bacterial strains. For example, the antibiotic sensitivity profile

Table 1 – Morphological characterization of rhizobacterial strains assessed after 24 h of incubation in solid state glucose-nutritive agar (ANG), 523 medium and yeast extract-mannitol agar (YMA).

Medium	Strain	Morphological characteristics								
		Elevation	Shape	Edges	Color	Brightness	Growth	Size	Consistency	Surface
ANG	S1	Spread	Circular	Complete	Light Beige	Opaque	Very fast	1–2 mm	Mucosus	Smooth
	S2	Spread	Irregular	Dented	Beige	Opaque	Very fast	1–2 mm	Mucosus	Rough
	3918	Flat	Irregular	Waved	Light Beige	Opaque	Very fast	2–3 mm	Dried	Rough
	Ca	Convex – low	Irregular	Complete	Light Beige	Bright	Very fast	1–2 mm	Mucosus	Smooth
	CI1b	Convex – high	Pointed	Complete	Light Beige	Bright	Very fast	<1 mm	Mucosus	Smooth
	R1	Flat	Pointed	Complete	Light Beige	Bright	Fast	1–2 mm	Mucosus	Smooth
	FL2	Flat	Circular	Complete	Yellow-orange	Translucent	Very fast	>3 mm	Mucosus	Smooth
	MF2	Umbilical	Circular	Complete	Dark Beige	Bright	Very fast	1–2 mm	Mucosus	Smooth
	MF4	Central protrusion	Circular	Complete	Beige-yellow	Bright	Very fast	1–2 mm	Mucosus	Smooth
	523	S1	Convex – low	Circular	Complete	Beige	Bright	Very fast	>3 mm	Mucosus
S2		Convex – low	Circular	Complete	Light Beige	Bright	Very fast	>3 mm	Fluid	Smooth
3918		Umbilical	Circular	Complete	White-ice	Bright	Very fast	>3 mm	Fluid	Rough
Ca		Umbilical	Circular	Waved	Beige-green	Bright	Very fast	>3 mm	Mucosus	Smooth
CI1b		Convex – medium	Pointed	Complete	White	Bright	Very fast	<1 mm	Mucosus	Smooth
R1		Flat	Circular	Dented	Beige	Bright	Fast	1–2 mm	Mucosus	Smooth
FL2		Flat	Circular	Complete	Green-fluorescent	Translucent	Very fast	>3 mm	Mucosus	Smooth
MF2		Convex – low	Circular	Complete	Yellow-green	Bright	Very fast	1–2 mm	Mucosus	Smooth
MF4		Umbilical	Circular	Complete	Beige-yellow	Bright	Very fast	2–3 mm	Mucosus	Smooth
YMA		S1	Flat	Circular	Lobed	White	Opaque	Very fast	>3 mm	Dried
	S2	Flat	Irregular	Dented	Beige	Opaque	Very fast	>3 mm	Dried	Rough
	3918	Flat	Irregular	Waved	White	Opaque	Very fast	>3 mm	Dried	Rough
	Ca	Flat	Irregular	Complete	Beige-yellow	Bright	Very fast	>3 mm	Mucosus	Smooth
	CI1b	Convex – high	Pointed	Complete	White	Bright	Very fast	<1 mm	Mucosus	Smooth
	R1	Flat	Pointed	Complete	Light Beige	Bright	Fast	1–2 mm	Mucosus	Smooth
	FL2	Flat	Circular	Complete	Yellow-orange	Translucent	Very fast	2–3 mm	Mucosus	Smooth
	MF2	Central protrusion	Circular	Complete	Beige	Bright	Very fast	1–2 mm	Mucosus	Smooth
	MF4	Convex – medium	Circular	Complete	Beige-yellow	Bright	Very fast	2–3 mm	Mucosus	Smooth

Table 2 – Rhizobacterial strain sensitivity expressed according to the formation of inhibition halos of bacterial growth in the presence of antibiotics.

Antibiotic		Rhizobacterial strains								
Commercial name	Concentration	S1	S2	3918	Ca	CIIB	R1	FL2	MF2	MF4
Pefloxacin	5 mcg	+	+	+	+	+	+	+	+	+
Penicillin G	10 U	–	–	–	–	–	+	–	–	–
Amikacin	30 µg	+	+	+	+	+	+	–	+	+
Amoxycillin + clavulanic acid	30 mcg	+	+	+	+	+	+	–	+	+
Cefepime	30 µg	+	+	+	+	+	+	–	+	+
Cefotaxime	30 mcg	+	+	+	+	+	+	–	+	+
Norfloxacin	10 µg	+	+	+	+	+	+	–	+	+
Sulphazotrim	25 µg	+	+	+	–	+	+	–	–	–
Clindamycin	2 µg	+	+	+	–	+	+	–	–	–
Vancomycin	30 mcg	+	+	+	–	+	+	–	–	–
Oxacillin	1 µg	+	+	+	–	–	–	–	–	–
Rifampicin	5 µg	–	+	–	–	+	–	–	+	+
Tobramycin	10 µg	–	+	–	+	–	+	–	+	+
Aztreonam	30 µg	–	+	+	–	–	–	–	+	+
Cefalotin	30 µg	–	+	+	–	–	+	–	–	–
Ceftazidime	30 µg	–	+	+	+	+	+	–	+	+
Cephalexin	30 mcg	+	–	+	+	–	+	–	–	–
Ampicillin	10 µg	+	+	–	+	+	+	–	–	–
Chloramphenicol	30 µg	+	+	–	+	+	+	–	–	–
Erythromycin	15 µg	+	+	–	–	–	+	–	–	–
Nitrofurantoin	300 µg	+	+	–	–	–	+	–	+	–
Amoxycillin	10 µg	+	+	–	+	+	+	–	+	–
Pipemidic acid	20 mcg	+	+	–	+	+	+	+	–	+
Streptomycin	10 mcg	+	+	+	+	–	+	+	–	+
Neomycin	30 mcg	+	+	+	+	–	+	–	+	–
Tetracycline	30 µg	–	+	–	+	+	+	+	–	+
Ticarillin + clavulanic acid	85 mcg	+	+	+	+	+	+	–	–	+
Sulfonamide	300 µg	+	+	+	+	+	+	+	–	+

Absence of inhibition halo (–).
Presence of inhibition halo (+).

and triage by PCR of the toxin showed that *Bacillus pumilus* was the predominant species in the seashore area around Cochin, India.²⁸ In addition to help the rhizobacterial identification, the supplementation of the culture medium used to produce the inoculants with antibiotics avoided contamination or strain misuse because it allowed only antibiotic-resistant strain growth. For example, the *P. putida* (MF2) strain could be differentiated by the use of sulfonamide to ensure strain purity because this antibiotic inhibited all of the other rhizobacterial strains tested. Similarly, amikacin, amoxycillin and clavulanic acid, cefepime, cefotaxime, and norfloxacin did not affect the growth of the FL2 isolate.

Recently, molecular techniques have been broadly employed in taxonomy and biodiversity studies of bacteria.^{1,19,20,29–32} The PCR-RFLP analysis results may vary among genera and species along with the 16S rRNA and 23S rRNA sequences.^{1,32} We used the 16S gene in the PCR-RFLP technique for the molecular characterization of rhizobacterial strains because it yields consistent results and is an easy to use, reliable, and sensitive method. The results from the molecular analysis in this study were similar to the findings of other authors.^{19,31–34} The cleavage of partial sequences of the 16S region of the ribosomal DNA allowed for differentiation of the genus *Bacillus* (3918, S1, and S2) and *Pseudomonas* (MF2, MF4, and Ca) from other strains (CIIB, R1,

and FL2). However, the observed restriction profiles did not differ among strains S1, S2, and 3918 (the species of *B. subtilis*) or among MF2, MF4, and Ca (the species of *Pseudomonas*), most likely because the 16S region of the ribosomal DNA of these species was highly conserved. Tassa and Duarte²⁰ were also not successful in separating *Pectobacterium carotovorum* subsp. *brasiliensis*, *P. carotovorum* subsp. *carotovorum*, and the other pectobacteria available in GenBank due to the low specificity presented by the enzymatic digestion of the amplified *recA* gene. However, cleavage with the *HhaI* and *TasI* enzymes allowed for the separation of 13 different groups and the discrimination of *P. carotovorum* subsp. *brasiliensis*.

The same molecular method could be used to separate *B. subtilis* from the *Pseudomonas* strains, but it requires amplification of the ITS rDNA regions. Because mutations in this region are more frequent than in the ribosomal genes, which are very useful for intraspecific separation.^{29,30,35} The intergenic space (ITS) region has been used to differentiate individuals, including genetically related species.^{29,30,35} For example, *Xanthomonas axonopodis* pv. *citri* Type A can be differentiated from *X. axonopodis* pv. *aurantifolii* Types B and C and *X. axonopodis* pv. *citrumela* Type E by amplifying the ITS region between the 16S and 23S regions, followed by posterior cleavage with the *DdeI*, *AluI*, and *Sau3AI* restriction enzymes.³⁰

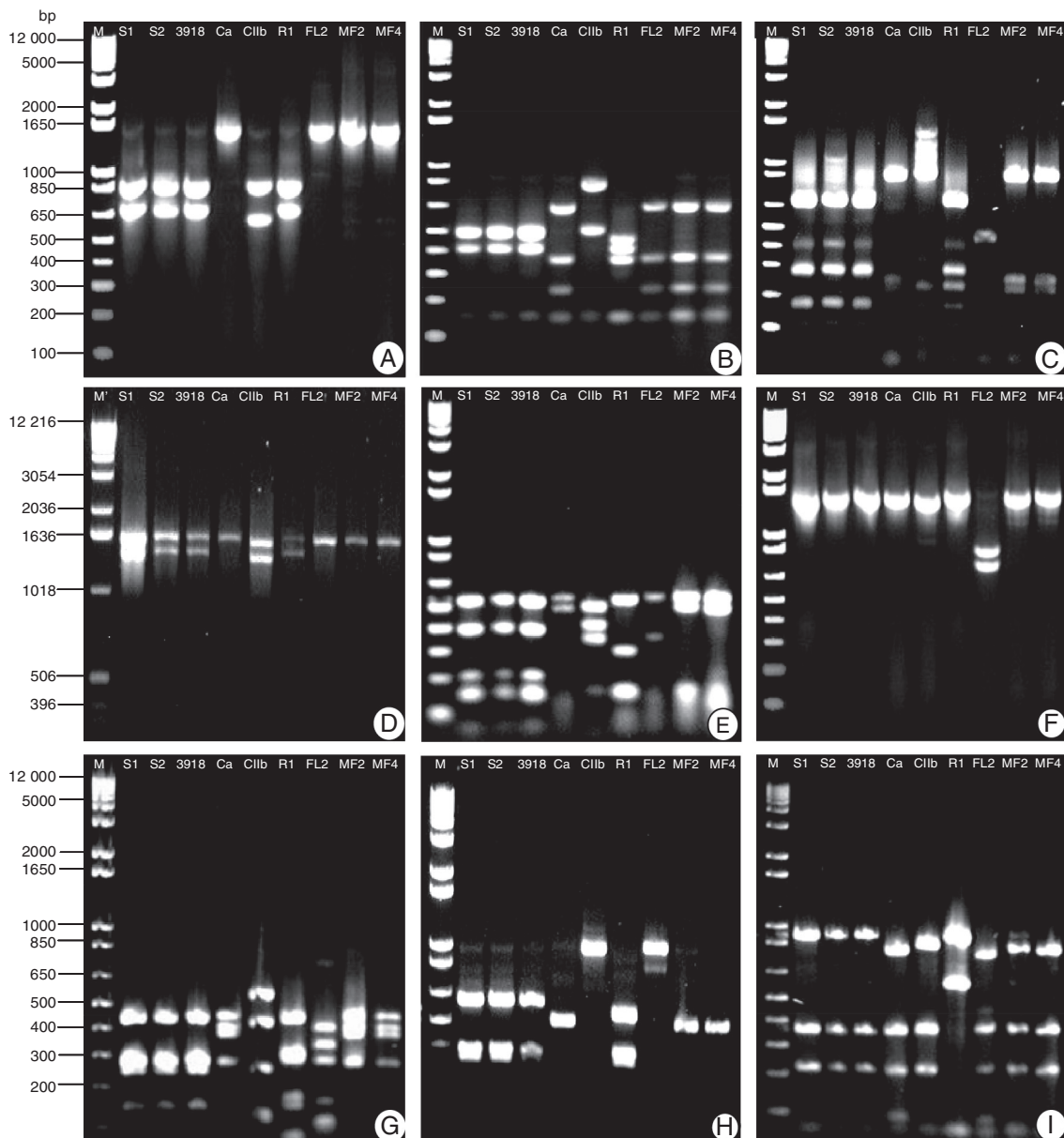


Fig. 2 – Restriction profile of amplified fragments of the 16S region from the rDNA of nine rhizobacterial strains. The fragments were cleaved with the following restriction enzymes: (A) *EcoRI*, (B) *RsaI*, (C) *Sau3AI*, (D) *SphI*, (E) *MspI*, (F) *BamHI*, (G) *DdeI*, (H) *HinfI*, (I) *TaqI*, and (M) restriction enzyme – 1 kb Plus DNA Ladder.

Conclusions

Morphological characterization of the colonies, assessment of antibiotic sensitivity, and PCR-RFLP analysis can be used to separate the nine strains of rhizobacteria tested.

The concomitant use of the three methods presented in this work reduces the likelihood of a contaminant being multiplied with the selected rhizobacteria strain.

Conflicts of interest

The authors declare no conflicts of interest.

Acknowledgments

This research was supported by CNPq, FAPEMIG and CAPES.

REFERENCES

1. Carlotti A, Funke G. Rapid distinction of *Brevibacterium* species by restriction analysis of rDNA generated by polymerase chain reaction. *Syst Appl Microbiol.* 1994;17:380-386.
2. Davison J. Plant beneficial bacteria. *BioTechniques.* 1988;6:282-286.

3. Kloepper JW, Lifshitz R, Zablotowicz RM. Free-living bacterial inocula for enhancing crop productivity. *Trends Biotechnol.* 1989;7:39–43.
4. Kloepper JW, Schroth MN. Plant growth-promoting rhizobacteria on radishes plant growth promoting rhizobacteria on radishes. In: *Proc. 4th Int. Conf. Plant Path. Bact., Angers.* 1978:879–882.
5. Glick BR. The enhancement of plant growth by free-living bacteria. *Can J Microbiol.* 1995;41:109–117.
6. Ashraf MA, Asif M, Zaheer A, Malik A, Ali Q, Rasool M. Plant growth promoting rhizobacteria and sustainable agriculture: a review. *Afr J Microbiol Res.* 2013;7:704–709.
7. Salla TD, Silva TR, Astarita LV, Santarém ER. Streptomyces rhizobacteria modulate the secondary metabolism of *Eucalyptus* plants. *Plant Physiol Biochem.* 2014;85:14–20.
8. Pelzer CQ, Halfeld-Vieira BA, Nechet KL, Souza GR, Zilli JE, Perin L. Mecanismos de controle da murcha-de-esclerócio e promoção de crescimento em tomateiro mediados por rizobactérias. *Trop Plant Pathol.* 2011;36:95–103.
9. Liu F, Xing S, Ma H, Du Z, Ma B. Plant growth-promoting rhizobacteria affect the growth and nutrient uptake of *Fraxinus americana* container seedlings. *Appl Microbiol Biotechnol.* 2013;97:4617–4625.
10. Adesemoye AO, Torbert HA, Kloepper JW. Plant growth-promoting rhizobacteria allow reduced application rates of chemical fertilizers. *Microb Ecol.* 2009;584:921–929.
11. Pal KK, Tilak KVB, Saxena AK, Dey R, Singh S. Suppression of maize root disease caused by *Macrophomina phaseolina*, *Fusarium moniliforme* and *Fusarium graminearum* by plant growth-promoting rhizobacteria. *Microbiol Res.* 2001;156:209–223.
12. Mafía RG, Alfenas AC, Maffia LA, Ferreira EM, Siqueira L. Efeito de rizobactérias sobre o enraizamento e crescimento de clones de eucalipto em diferentes condições de propagação clonal. *Rev Árvore.* 2007;31:813–821.
13. Mafía RG, Alfenas AC, Ferreira EM, Teixeira DA, Zauza EAV. Indução do enraizamento e crescimento do eucalipto por rizobactérias: efeito da adição de fonte alimentar e da composição do substrato de enraizamento. *Rev Árvore.* 2007;31:589–597.
14. Mafía RG, Alfenas AC, Maffia LA, Ferreira EM, Binoti DHB, Mafía GMV. Plant growth promoting rhizobacteria as agents in the biocontrol of eucalyptus mini-cutting rot. *Trop Plant Pathol.* 2009;34:10–17.
15. Teixeira DA, Alfenas AC, Mafía RG, Maffia LA, Ferreira EM. Evidências de indução de resistência sistêmica à ferrugem do eucalipto mediada por rizobactérias promotoras do crescimento de plantas. *Fitopatol Bras.* 2005;30:350–356.
16. Santiago TR, Grabowski C, Rossato M, Romeiro RS, Mizubuti ESG. Biological control of eucalyptus bacterial wilt with rhizobacteria. *Biol Control.* 2015;80:14–22.
17. Alfenas AC, Zauza EAV, Mafía RG, Assis TFD. *Clonagem e doenças do eucalipto.* 2ª Ed. Viçosa, Brasil: Editora UFFV; 2009.
18. Ramezanpour MR, Popov Y, Khavazi K, Rahmani AH. Molecular genosystematic and physiological characteristics of fluorescent pseudomonads isolated from the rice rhizosphere of Iranian paddy fields. *Afr J Agric Res.* 2011;6:145–151.
19. Shah SA, Romick TL. Subspecies differentiation of *Salmonella* by PCR-RFLP of the ribosomal operon using universal primers. *Lett Appl Microbiol.* 1997;25:4–57.
20. Tassa SOM, Duarte V. Identificação de *Pectobacterium carotovorum* subsp *brasiliensis* através de PCR-RFLP do Gene *recA*. *Fitopatol Bras.* 2006;31:23–28.
21. Teixeira DA, Alfenas AC, Mafía RG, et al. Rhizobacterial promotion of eucalypt rooting and growth. *Braz J Microbiol.* 2007;38:1–6.
22. Kado EI, Heskett MG. Selective media for isolation of *Agrobacterium*, *Corynebacterium*, *Erwinia*, *Pseudomonas* and *Xanthomonas*. *Phytopathology.* 1970;60:969–976.
23. Brenner DJ, Garrity GM, Krieg NR, Staley T. *Bergey's Manual of Systematic Bacteriology.* 2ª Ed. East Lansing, USA: Michigan State University; 2005.
24. Mariano RLR. *Manual de práticas em fitobacteriologia.* Pernambuco, Brasil: Editora Universitária UFPE; 2000.
25. Romeiro RS. *Métodos em Bacteriologia de Plantas.* Viçosa, MG, Brasil: Editora UFFV; 2001.
26. Graves LM, Swaminathan M. Universal bacteria DNA isolation procedure. In: Persing DH, Smith TF, Tenover FC, White BE, eds. *Diagnostic Molecular Microbiology: Principles and Application.* Washington: American Society for Microbiology; 1993:325–328.
27. White TJ, Bruns T, Lee S, Taylor JW. Amplification and direct sequencing of fungal ribosomal RNA genes for phylogenetics. In: Innis MA, Gelfand DH, Sninsky JJ, White TJ, eds. *PCR Protocols: A Guide to Methods and Applications.* Vol 119. New York: Academic Press; 1990:315–322.
28. Parvathi A, Krishna K, Jose J, Joseph N, Nair S. Biochemical and molecular characterization of *Bacillus pumilus* isolated from coastal environment in Cochin, India. *Braz J Microbiol.* 2009;40:269–275.
29. Baudoin E, Couillerot O, Spaepen S, Moëgne-Loccoz Y, Nazaret S. Applicability of the 16S–23S rDNA internal spacer for PCR detection of the phyto-stimulatory PGPR inoculants *Azospirillum lipoferum* CRT1 in field soil. *J Appl Microbiol.* 2009:1–14.
30. Destéfano SAL, Rodrigues Neto J. Rapid differentiation of *Xanthomonas* strains causing disease in citrus plants by PCR-RFLP of the 16S–23S rDNA spacer region. *Summa Phytopathol.* 2002;8:167–172.
31. Gibotti A, Tanaka TL, Oliveira VR, Taddei CR, Martinez MB. Molecular characterization of enteroinvasive *Escherichia coli* ipa genes by PCR-RFLP analysis. *Braz J Microbiol.* 2004;35:74–80.
32. Sikora S, Redzepovic S. Genotypic characterization of indigenous soybean rhizobia by PCR-RFLP of 16S rDNA, *rep*-PCR and RAPD analysis. *Food Technol Biotechnol.* 2003;41:61–67.
33. Ruiz A, Poblet M, Mas A, Guillamón JM. Identification of acetic acid bacteria by RFLP of PCR-amplified 16S rDNA and 16S–23S rDNA intergenic spacer. *Int J Syst Evol Microbiol.* 2000;50:1981–1987.
34. Upadhyay SK, Singh DP, Saikia R. Genetic diversity of plant growth promoting rhizobacteria isolated from rhizospheric soil of wheat under saline condition. *Curr Microbiol.* 2009;59:489–496.
35. Brookman JL, Mennim G, Trinci APJ, Theodorou MK, Tuckwell DS. Identification and characterization of anaerobic gut fungi using molecular methodologies based on ribosomal ITS1 and 18SrRNA. *Microbiology.* 2000;146:393–403.
36. Coon HJ, Jennison MW, Week OB. Routine tests for the identification of bacteria. In: Society of American Bacteriologists, ed. *Manual of Microbiological Methods.* New York, USA: McGraw-Hill; 1957:239–262.