

Research Paper

Comparison of DNA extraction protocols for microbial communities from soil treated with biochar

D.C.A. Leite¹, F.C. Balieiro², C.A. Pires², B.E. Madari³, A.S. Rosado¹,
H.L.C. Coutinho², R.S. Peixoto^{1*}

¹Laboratório de Ecologia Microbiana Molecular, Instituto de Microbiologia Prof. Paulo de Góes, Universidade Federal do Rio de Janeiro, Rio de Janeiro, RJ, Brazil.

²Empresa Brasileira de Pesquisa Agropecuária Solos, Rio de Janeiro, RJ, Brazil.

³Empresa Brasileira de Pesquisa Agropecuária Arroz e Feijão, Goiás, GO, Brazil.

Submitted: March 1, 2013; Approved: April 1, 2013.

Abstract

Many studies have evaluated the effects of biochar application on soil structure and plant growth. However, there are very few studies describing the effect of biochar on native soil microbial communities. Microbial analysis of environmental samples requires accurate and reproducible methods for the extraction of DNA from samples. Because of the variety among microbial species and the strong adsorption of the phosphate backbone of the DNA molecule to biochar, extracting and purifying high quality microbial DNA from biochar-amended soil is not a trivial process and can be considerably more difficult than the extraction of DNA from other environmental samples. The aim of this study was to compare the relative efficacies of three commercial DNA extraction kits, the FastDNA® SPIN Kit for Soil (FD kit), the PowerSoil® DNA Isolation Kit (PS kit) and the ZR Soil Microbe DNA Kit Miniprep™ (ZR kit), for extracting microbial genomic DNA from sand treated with different types of biochar. The methods were evaluated by comparing the DNA yields and purity and by analysing the bacterial and fungal community profiles generated by PCR-DGGE. Our results showed that the PCR-DGGE profiles for bacterial and fungal communities were highly affected by the purity and yield of the different DNA extracts. Among the tested kits, the PS kit was the most efficient with respect to the amount and purity of recovered DNA and considering the complexity of the generated DGGE microbial fingerprint from the sand-biochar samples.

Key words: biochar, DNA extraction, PCR-DGGE, microbial communities, DNA purity indices.

Introduction

The addition of biochar to soil has been promoted as a tool to minimise atmospheric CO₂ emissions in agricultural systems (Laird, 2008; Novak *et al.*, 2009) and to improve plant productivity (Kwapinski *et al.*, 2010). Biochar is the product of the thermal degradation of organic materials in the absence of oxygen (pyrolysis), and it differs from charcoal in its use in soil amendment (Lehmann *et al.*, 2009).

Currently, well known benefits of addition of biochar to soil include increasing the pH and humidity, preserving nutrients, improving the soil structure and reducing N₂O

and CH₄ emissions from the soil (Amonette *et al.*, 2009). Some studies have also demonstrated that biochar can modify the composition and abundance of soil biological communities (Pietikäinen *et al.*, 2000; Yin *et al.*, 2000; Kim *et al.*, 2007; O'Neill *et al.*, 2009; Liang *et al.*, 2010; Grossman *et al.*, 2010; Jin, 2010). The changes produced by biochar treatment may have effects on the recycling of nutrients (Steiner *et al.*, 2008) or even on the soil structure (Rillig *et al.*, 2006) and may indirectly affect plant growth (Warnock *et al.*, 2007). Bacteria and fungi from the rhizosphere may also directly promote plant growth (Schwartz *et al.*, 2006; Compant *et al.*, 2010). The possible connections between

biochar properties and the soil microbiota, and the implications of these connections, have not been systematically described, and Lehmann *et al.* (2011), have indicated that this is a priority research area.

In the last few decades, molecular techniques based on the 16S rRNA gene, the fungal ITS region and other genetic markers have been developed to analyse microbial communities from environmental samples (Ovreas *et al.*, 1997; Nakatsu *et al.*, 2007). These methods have advantages over classical protocols because only 1-10% of the microorganisms in an environmental sample can be cultured (Hugenholz *et al.*, 1998; Zeyaulah *et al.*, 2009). Fingerprinting techniques, which combine target gene amplification with amplicon separation by DGGE can provide important information about changes in the microbial community in response to environmental changes (Ovreas *et al.*, 1997; Nakatsu *et al.*, 2007). The success of molecular tools, including PCR-DGGE, is strongly affected by the DNA or RNA extraction method used (Santos *et al.*, 2012). DNA isolation methods involving insufficient cell lysis or too much DNA degradation may result in underestimates (Holland *et al.*, 2000; McOrist *et al.*, 2002). Inhibitors within environmental samples, such as humic acids and excess protein, may create similar problems (Ariefdjohan *et al.*, 2010).

Because of the strong adsorption of the phosphate backbone of DNA to biochar, microbial DNA extraction and purification from biochar-amended soil can be more difficult than the extraction of DNA from other environmental samples (Wilson *et al.*, 1997; Thies *et al.*, 2003). Jin (2010) added 10 µg of DNA to pure biochar particles and observed that the DNA recovery decreased in the presence of biochar. Approximately 30.6% of the added DNA was recovered in the absence of biochar, in contrast to 2.7% in the presence of biochar. This result indicates that biochar effectively adsorbed the DNA, demonstrating the necessity of efficient methods to improve to recovery of DNA from biochar-associated microbial communities.

Many commercial DNA extraction kits have been developed to simplify and accelerate DNA purification. The goal of this study was to compare the relative efficacies of three commercial DNA extraction kits (the FastDNA® SPIN Kit for Soil, the PowerSoil DNA Isolation Kit and the ZR Soil Microbe DNA Kit) for extracting microbial genomic DNA from soil treated with different types of biochar. These kits were compared based on the amount and the purity of the recovered DNA and on the complexity of the bacterial and fungal DGGE profiles obtained from the extracted DNA.

Materials and Methods

Sampling

Sampling was performed using microcosms maintained at Embrapa Arroz e Feijão (Santo Antônio de Goiás,

GO, Brazil) on December 2009. The microcosms were constructed in flowerpots with sand (7 kg each). Biochar (12:1, vol/vol) was milled, passed through a 2-mm sieve and then carefully mixed with the sand to produce a homogenous mixture. Two different types of biochar were mixed with the sand: sugar cane straw biochar and *Eucalyptus sp.* wood biochar. Three field repetitions were made for each treatment, for a total of 9 microcosms. The treatments were soil + sugar cane straw biochar (SSB); soil + *Eucalyptus sp.* wood biochar (EWB) and soil (control, SC).

Soil DNA extraction

In this study, we tested three different methods for DNA extraction: The FastDNA® SPIN Kit for Soil (MP Biomedicals, Solon, CA, USA) (FD kit), the PowerSoil® DNA Isolation Kit (MoBio Laboratories, Carlsbad, CA, USA) (PS kit) and the ZR Soil Microbe DNA Kit Mini-prep™ (Zymo Research, Irvine, CA, USA) (ZR kit). All methods are based on direct cell lysis with subsequent recovery and purification of nucleic acids. Up to 500 mg of soil was added to the lysis tubes, and the samples were homogenised in a FastPrep® for 40 s at a speed setting of 6.0 m/s. The DNA extraction was performed according to manufacturer's recommendations for each kit.

DNA quantification and purity

The DNA purity was quantified using a NanoDrop Spectrophotometer (ND-1000, NanoDrop Technology, Wilmington, DE, USA) by measuring the A260/280 and A260/230 ratios. The DNA yield was quantified using a Qubit® 2.0 Fluorometer (Invitrogen, Carlsbad, CA, USA). The Qubit® assay uses an ultrasensitive fluorescent nucleic acid stain to quantify double-stranded DNA (Invitrogen, 2010).

Co-extracted humic acids and proteins are two major contaminants of DNA extracted from environmental samples. The levels of humic acids and proteins were determined by measuring the absorbances at 230 nm and 280 nm, respectively, whereas the amount of DNA was determined by measuring the absorbance at 260 nm. In this study, the purity of the DNA was assessed spectrophotometrically by calculating the A260/A230 and A260/A280 ratios to evaluate the levels of humic acid contamination and protein impurities, respectively. A260/A230 ratios greater than 2 and A260/A280 ratios greater than 1.7 indicate high-purity DNA, and lower ratios indicate humic acid and protein contamination, respectively (Ning *et al.*, 2009).

PCR-DGGE of the 16S gene and ITS region

The amplification of specific regions of the gene encoding the 16S rRNA was performed using the primers U968f GC (5' CGC CCG CCG CGC GCG GCG GGC GGG GCG GGG GCA CGG GGG GAA CG CGA AGA ACC TTA C 3') and L1401r (5' GCG TGT GTA CAA GAC CC 3') (Heuer *et al.*, 1997). The amplification was

performed in a solution containing 1X PCR buffer, 0.2 mM dNTPs, 2.5 mM MgCl₂, 2.5 U of recombinant Taq DNA polymerase (Promega), 4 ng of total DNA, 200 µmol of each primer and sterile Milli-Q water in a final volume of 50 µL. The reaction was performed in a thermocycler (Mastercycler Gradient, Eppendorf, Hamburg, Germany) with the following conditions: initial denaturation at 94 °C for 3 min; 35 cycles at 94 °C for 1 min, 55 °C for 1 min and 72 °C for 1 min and a final extension at 72 °C for 10 min. The DGGE gels (45-65% urea and formamide) were prepared with a solution of polyacrylamide (6%) in Tris-acetate (pH 8.3). Electrophoresis was performed in Tris-acetate-EDTA buffer at 60 °C at a constant voltage of 75 V for 16 hours. The DGGE gels were stained with SYBR Green (Molecular Probes) and visualised using a Storm 860 Imaging System (GE Healthcare).

Fungal ITS regions were PCR-amplified using the primers EF4 (5' GGA AGG GRT GTA TTT ATT AG 3') (Smit *et al.*, 1999) and ITS4 (5' TCC TCC GCT TAT TGA TAT GC 3') (White *et al.*, 1990). The first amplification was performed in a solution containing 1X PCR buffer, 0.2 mM dNTPs, 3.75 mM MgCl₂, 2.5 U of recombinant Taq DNA polymerase (Promega), 4 ng of total DNA, 200 µmol of each primer, 0.25 µL of bovine serum albumin (BSA) solution (20 mg mL⁻¹) and sterile Milli-Q water in a final volume of 25 µL. The reaction was performed in a thermocycler (Mastercycler Gradient, Eppendorf, Hamburg, Germany). The cycling parameters were 94 °C for 5 min; 35 cycles of 94 °C for 30 s, 55 °C for 30 s and 72 °C for 30 s; and a final extension at 72 °C for 5 min.

The second amplification was performed with the primers ITS1-F GC (5' CTT GGT CAT TTA GAG GAA GTA A 3') (Gardes *et al.*, 1993) and ITS2 (5' GCT GCG TTC TTC ATC GAT GC 3') (White *et al.*, 1990). A GC clamp (5'-CGC CCG CCG CGC GCG GCG GGC GGG GCG GGG GCA CGG GGG G-3') (Muyzer *et al.*, 1993) was added to the 5' end of the ITS1-F primer. The PCR and cycling conditions were as described above except that BSA was omitted from the reactions. The DGGE gels (30 to 60% urea and formamide) were prepared with a solution of polyacrylamide (8%) in Tris-acetate (pH 8.3). Electrophoresis was performed in Tris-acetate-EDTA buffer at 60 °C at a constant voltage of 75 V for 16 hours. The DGGE gels were stained with SYBR Green (Molecular Probes) and visualised using a Storm 860 Imaging System (GE Healthcare).

Analysis of the bacterial and fungal DGGE profiles

The similarities between the banding patterns in the DGGE profiles were calculated based on the presence and absence of bands and were expressed as similarity coefficients. In this study, the Jaccard similarity coefficient was used for pairwise comparisons of the DGGE fingerprint profiles obtained from the three DNA extraction kits. Dendrograms that show clustering according to the similarity of

the DNA fragment patterns between samples were constructed using the unweighted pair group method of arithmetic averages (UPGMA) using BioNumerics software (BioNumerics, Applied Maths, Inc., Austin, TX).

Statistical analysis

All extractions were performed in triplicate to account for analytical variability. The number of DGGE bands was analysed using Statistica (version 9.1; SAS Institute, Cary, NC) by repeated measures ANOVA. Differences between treatments were grouped using the Tukey test. Data were expressed as the mean ± SD. Differences were considered significant when the p value was < 0.05.

Results

Purity and quantity of extracted DNA

Although the three evaluated commercial kits are all based on direct lysis, significant differences were observed in the quantity and purity of the recovered DNA. In general, the FD and PS kits were able to recover more DNA than the ZR kit (Figure 1). No significant differences were observed between the FD and PS DNA extraction kits when using the control treatment (SC) samples. However, differences were detected between these DNA extraction methods for samples containing biochar (SSB and EWB), in agreement with the previously described difficulties with DNA extraction from biochar-treated soil samples (Jin, 2010).

Based on the purity index of the extracted DNA (Table 1), we observed that the FD kit resulted in a higher amount of humic acids co-extracted together with the DNA (about three times more than with the ZR kit). The PS kit resulted in the lowest level of humic acids (it extracted 36 times less humic acids than the FD kit). The three methods resulted in similar amounts of protein co-extraction.

According to Ning *et al.* (2009), an A260/A230 ratio greater than 2 and an A260/A280 ratio greater than 1.7 indi-

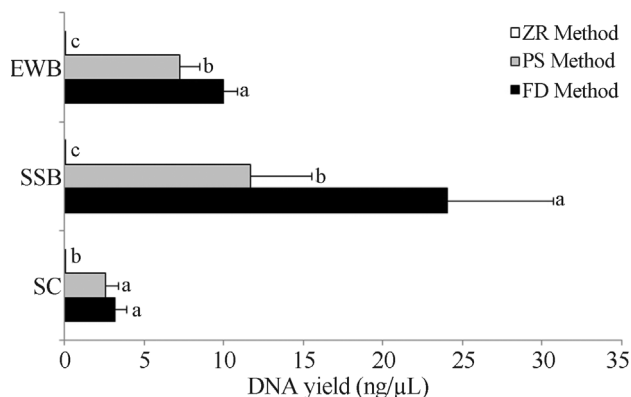


Figure 1 - Average DNA yield obtained using three commercial extraction kits (FD, PS and ZR) determined by the Qubit assay. FD: FastDNA® SPIN Kit for Soil; PS: PowerSoil® DNA Isolation Kit; ZR: ZR Soil Microbe DNA Kit Miniprep™; SSB: soil + sugar cane straw biochar; EWB: soil + *Eucalyptus sp.* wood biochar; SC: soil (control).

Table 1 - DNA extraction efficiencies of the three evaluated commercial kits (FD, PS and ZR) assessed using a NanoDrop spectrometer (A230, A260, A280).

	FD Method			PS Method			ZR Method		
	A230	A260	A280	A230	A260	A280	A230	A260	A280
SC	10.9 ± 0.6	0.4 ± 0.0	0.2 ± 0.1	0.2 ± 0.0	0.2 ± 0.0	0.1 ± 0.0	1.9 ± 0.3	0.3 ± 0.1	0.3 ± 0.1
SSB	11.0 ± 0.4	0.6 ± 0.1	0.3 ± 0.1	0.3 ± 0.0	0.4 ± 0.3	0.2 ± 0.2	3.2 ± 2.3	0.3 ± 0.0	0.3 ± 0.0
EWB	11.1 ± 0.7	0.7 ± 0.0	0.3 ± 0.0	0.3 ± 0.0	0.4 ± 0.0	0.2 ± 0.0	3.9 ± 1.8	0.4 ± 0.1	0.3 ± 0.1

*FD: FastDNA® SPIN Kit for Soil; PS: PowerSoil® DNA Isolation Kit; ZR: ZR Soil Microbe DNA Kit Miniprep™; SSB: soil + sugar cane straw biochar; EWB: soil + *Eucalyptus sp.* wood biochar; SC: soil (control).

cate high-purity DNA, and lower ratios indicate humic acid and protein contamination, respectively. In this study, the ZR kit yielded the worst A260/280 ratio (~1.0), and the FD and PS kits both showed better results, ranging from 1.8 to 2.5 (Figure 2A). The PS kit had A260/A230 ratio values near 2, demonstrating better performance with respect to removing humic substances than the ZR and FD kits (Figure 2B).

Bacterial and fungal profiles accessed by DGGE

PCR products representing the total bacterial and fungal communities were evaluated by PCR-DGGE. The DGGE profiles for each community (bacterial and fungal) were evaluated for each DNA extraction method, and the

number and diversity of detected bands were compared (Figures 3 and 4).

The ZR extraction method presented serious limitations for the PCR-DGGE analyses due to the low quantity of recovered DNA. The bacterial community was represented by a reduced number of bands when compared with the number of bands obtained with the other extraction methods (Figure 3A); for fungal communities, amplification was only achieved for the SSB samples (Figure 4A-B).

For the bacterial community, the number of bands in the DNA extracted using the FD and PS kits differed for the SSB samples, whereas there were no significant differences in the number of bands for the EWB and SC samples between kits (Figure 3A). In contrast, there was no significant difference in the number of bands for the fungal community between the FD and PS kits (Figure 4A).

The differences in the band resolution were best illustrated by comparisons of the profiles for the same sample obtained using different DNA extraction kits, according to Figures 3B and 4B.

Using the DGGE profiles of the microbial communities, we performed a cluster analysis to verify the influence of the extraction method on the final dendrogram. Each DNA extraction method resulted in different clusters for the bacterial community (Figure 5). The DNA extracted with the ZR and PS kits (Figure 5B-C) showed that bacterial communities of the EWB and SC treatments were similar. However, the PS kit had a higher similarity coefficient (~72%) than the ZR kit (~38%). This result was not observed when the FD kit (Figure 5A) was used for the DNA extraction. There was no clear clustering of the SC, SSB and EWB samples, which exhibited only approximately 58% similarity to each other. The FD and PS kits yielded very similar results for the fungal community profiles (Figure 6A-B) and indicated that the addition of biochar (EWB and SSB) modified the native fungal community (SC). When using the ZR kit, only the fungal community in the SSB samples was detected, and therefore, it was not possible to do the cluster analysis.

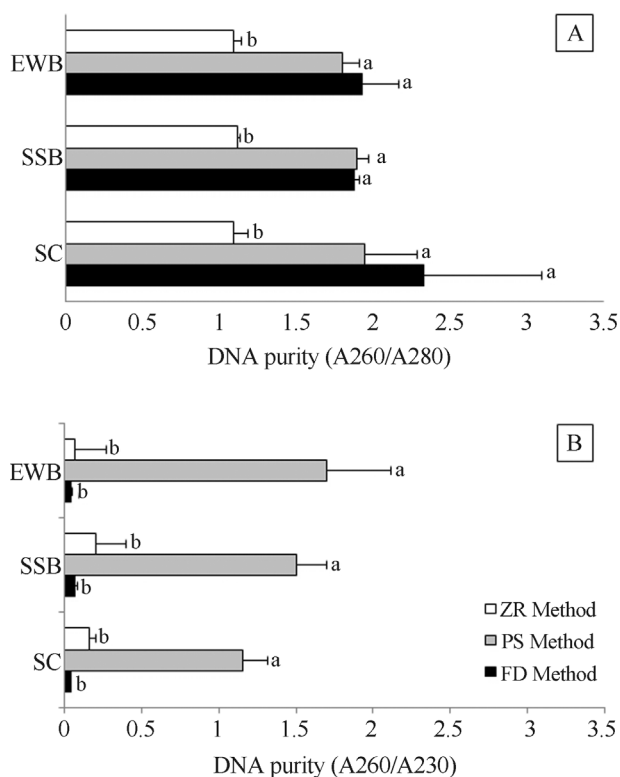


Figure 2 - Purity index for the DNA obtained using three commercial extraction kits (FD, PS and ZR) with respect to co-extraction of (A) proteins and (B) humic acids. FD: FastDNA® SPIN Kit for Soil; PS: PowerSoil® DNA Isolation Kit; ZR: ZR Soil Microbe DNA Kit Miniprep™; SSB: soil + sugar cane straw biochar; EWB: soil + *Eucalyptus sp.* wood biochar; SC: soil (control).

Discussion

The use of molecular biology methods to analyse microbial communities from environmental samples requires

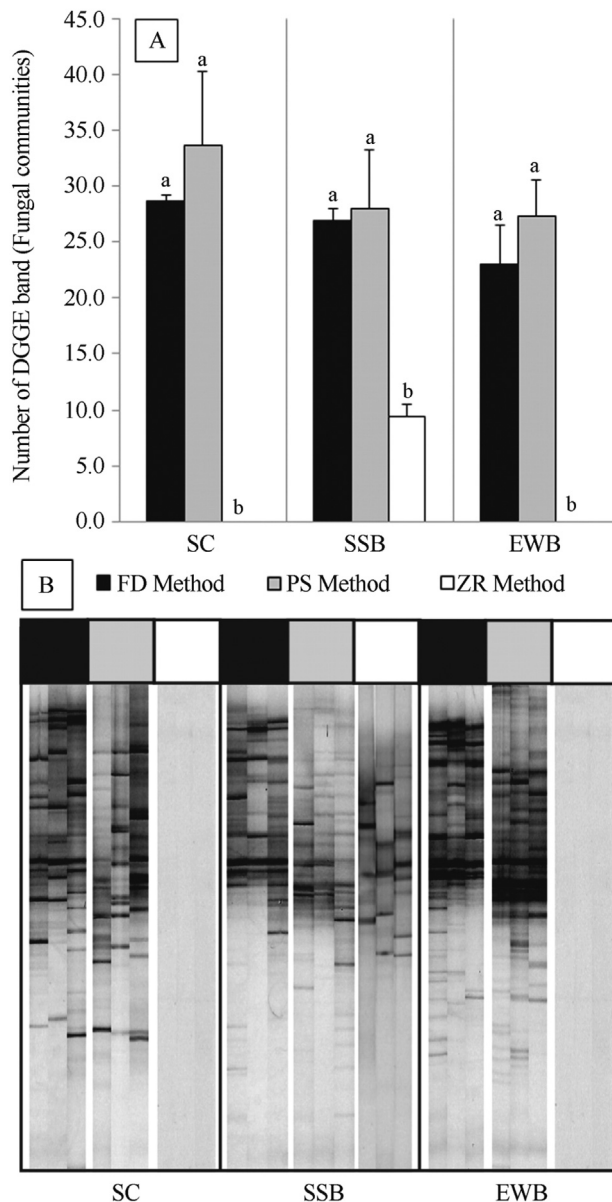
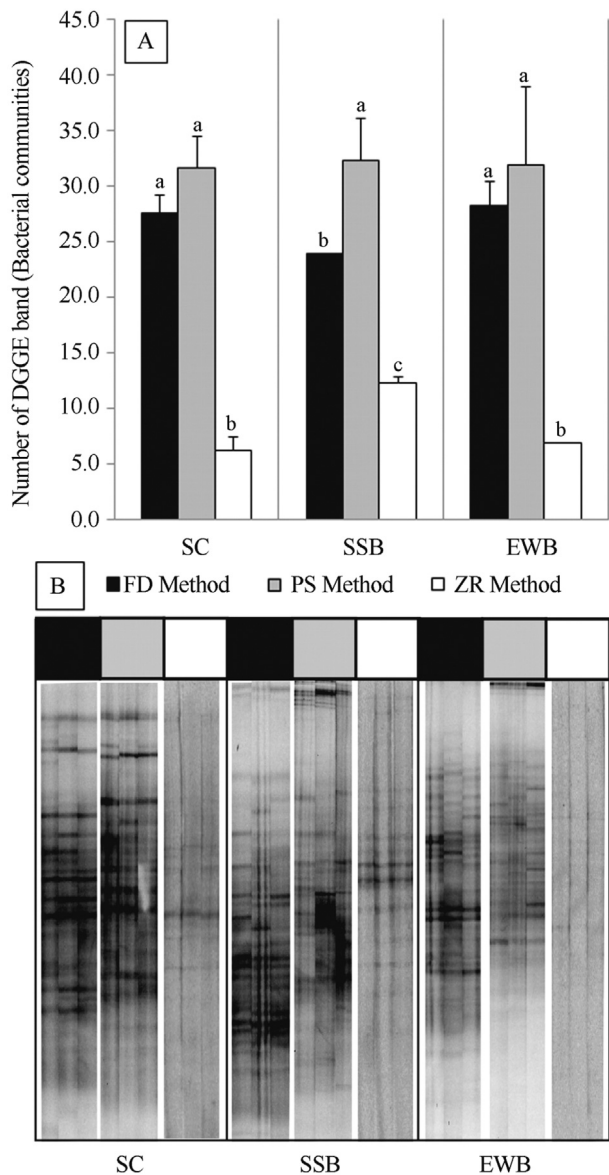


Figure 3 - Effects of the DNA extraction method (FD, PS and ZR) on the revealed bacterial community structure in samples of microcosms representing three treatments (SC, SSB and EWB). The evaluation was performed by comparing 16S rDNA amplicons by Denaturing Gradient Gel Electrophoresis (DGGE). (A) The number of DGGE bands and (B) the DGGE profile. FD: FastDNA® SPIN Kit for Soil; PS: PowerSoil® DNA Isolation Kit; ZR: ZR Soil Microbe DNA Kit Miniprep™; SSB: soil + sugar cane straw biochar; EWB: soil + *Eucalyptus sp.* wood biochar; SC: soil (control). The numbers 1, 2 and 3 represent the replicates.

Figure 4 - effects of the DNA extraction method (FD, PS and ZR) on the revealed fungal community structure in samples of microcosms representing three treatments (SC, SSB and EWB). The evaluation was performed by comparing fungal ITS regions amplicons by Denaturing Gradient Gel Electrophoresis (DGGE). (A) the number of DGGE bands and (B) DGGE profile. FD: FastDNA® SPIN Kit for Soil; PS: PowerSoil® DNA Isolation Kit; ZR: ZR Soil Microbe DNA Kit Miniprep™; SSB: soil + sugar cane straw biochar; EWB: soil + *Eucalyptus sp.* wood biochar; SC: soil (control). The numbers 1, 2 and 3 represent the replicates.

reproducible and efficient strategies for DNA extraction. The first DNA extractions were performed using protocols developed in-house that then became the basis for different commercially available kits (Park *et al.*, 2005; Miller *et al.*, 2009). Different extraction methods can vary with respect to efficiency due to the physical and chemical characteristics of samples. Therefore, diversity analysis and/or specific gene quantification is influenced by the DNA extraction method (Park *et al.*, 2005). In our study, we in-

vestigated the feasibility of using different methods to extract microbial DNA from biochar-treated sand.

Jin (2010) suggests that biochar has a high affinity for the phosphate backbone of DNA. This hypothesis is consistent with studies performed by Chatteraj and Mitra (2009) in which genomic DNA was found to have a high binding affinity for charcoal. Jin (2010) also verified that the amount of DNA that could be extracted decreased with an increasing biochar application rate over a range from

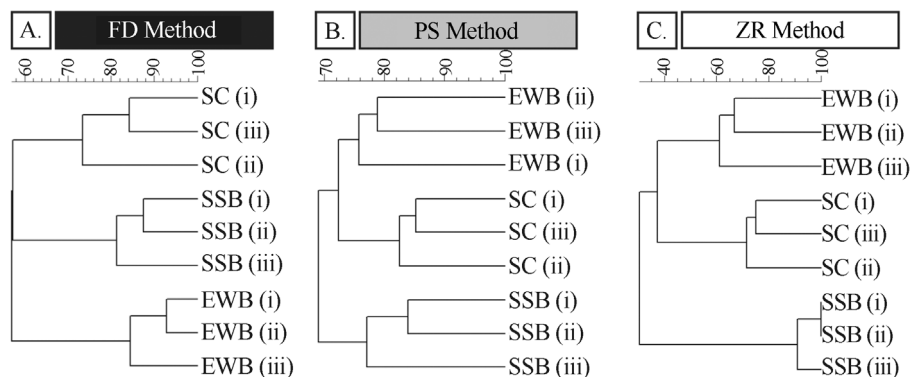


Figure 5 - Cluster analysis of the bacterial communities in samples from the three treatments (SSB, EWB and SC). The dendrograms were generated from the PCR-DGGE profiles of the 16S rDNA amplicons obtained with DNA extracted using commercial kits: (A) FD, (B) PS and (C) ZR. The dendrograms were based on UPGMA and the Jaccard correlation. FD: FastDNA® SPIN Kit for Soil; PS: PowerSoil® DNA Isolation Kit; ZR: ZR Soil Microbe DNA Kit Miniprep™; SSB: soil + sugar cane straw biochar; EWB: soil + *Eucalyptus sp.* wood biochar; SC: soil (control). The Roman numerals i, ii and iii represent the replicates.

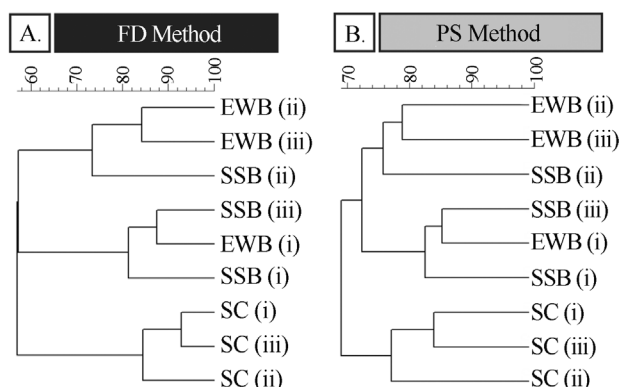


Figure 6 - Cluster analysis of the fungal communities in samples from the three treatments (SSB, EWB and SC). Dendrograms were generated from the PCR-DGGE profiles of the fungal ITS region amplicons obtained with DNA extracted using commercial kits: (A) FD and (B) PS. The dendrograms were based on UPGMA and the Jaccard correlation. FD: FastDNA® SPIN Kit for Soil; PS: PowerSoil® DNA Isolation Kit; ZR: ZR Soil Microbe DNA Kit Miniprep™; SSB: soil + sugar cane straw biochar; EWB: soil + *Eucalyptus sp.* wood biochar; SC: soil (control). The Roman numerals i, ii and iii represent the replicates.

0 t ha⁻¹ (control treatment, no biochar added) to 30 t biochar ha⁻¹. The quantity of recovered DNA decreased by half in samples containing high levels of biochar relative to control samples (no biochar added).

Our results indicate that, among the three kits tested, the FD and PS kits were the most efficient with regard to the quantity of DNA that was obtained from the biochar-treated sand samples (Figure 1). However, the FD kit co-extracted more humic acids than the other kits; this result is a key factor that may compromise the utility of the extracted DNA and thus interfere with DNA longevity and PCR amplification.

As reported in previous studies, biochar is a compound with a high adsorption capacity for organic matter (Baldrock *et al.*, 2002) and soluble nutrients such as ammonium (Lehmann *et al.*, 2002), nitrate (Mizuta *et al.*, 2004),

phosphate (Beaton *et al.*, 1960) and other ionic solutes (Radovic *et al.*, 2002). It is necessary to use methods that remove substances that behave similarly to DNA and may inhibit PCR amplification. The PS DNA extraction method uses three steps to separate DNA from organic and inorganic material including humic substances, cellular debris and proteins to increase the DNA purity and facilitate downstream DNA applications.

After cell lysis, the ZR kit uses column filtration during DNA purification, which had low efficiency with respect to DNA purity and yield for our samples (Figures 1 and 2). Just because biochar easily adsorbs ions, and because DNA is a negatively charged molecule, we suggest that the filtration column method may not be effectively to separate DNA from other contaminants derived from biochar due to characteristics that are shared between DNA and these contaminants.

The results obtained by PCR-DGGE analysis of the biochar-associated microbial communities revealed a clear influence of the DNA extraction method on the detected microbial diversity and community composition.

Some studies have shown that the incorporation of biochar into soil may influence soil microbial communities in a different way (Lehmann *et al.*, 2001). After biochar addition, the soil pH may increase or decrease depending on the pH of the biochar. Biochar can have pH as low as 4 or as high as 12, depending on the feedstock type, the pyrolysis temperature (Lehmann, 2007; Chan *et al.*, 2009) and the degree of oxidation (Cheng *et al.*, 2006). Therefore, very different environmental conditions can be created in biochar pores when using different types of biochar. For example, fungal and bacterial populations react differently to changes in pH. Bacteria are likely to increase in abundance with increasing pH up to values of approximately 7, whereas fungi may exhibit no change in total biomass (Rousk *et al.*, 2010) or may show dramatic reductions in growth at higher pHs (Rousk *et al.*, 2009).

Bacterial communities

The PS and FD kits yielded DNA with an enriched band profile when compared with the DNA obtained with the ZR kit, which yielded a lower number of weaker bands with lower intensities. The results obtained for the DNA isolated with the ZR kit may be related to the lower amount of DNA recovered after extraction, which may have interfered with the PCR-DGGE profiles (Figure 3B). The DNA extracted with the ZR and PS kits demonstrated that bacterial communities in the SC (control) and EWB (eucalyptus wood biochar) samples are more similar to each other than to the communities in the SSB (sugarcane straw biochar) samples (Figure 5B-C). The same patterns were not observed when the FD (Figure 5A) kit was used to extract the DNA; in this case, the samples containing biochar (SSB and EWB) and the control (SC) were 58% similar.

These results demonstrate that the choice, evaluation and standardisation of DNA extraction methods are critical, further highlighting the importance of the DNA extraction step in microbial ecology studies. These data are in accord with the result of the studies of De Liphthay *et al.* (2004) and Carrigg *et al.* (2007), who observed that bacterial community profiles, when analysed by denaturing gradient gel electrophoresis (DGGE), were affected by different methods of DNA extraction.

Fungal communities

We did not observe differences between the fungal community profiles generated by PCR-DGGE analysis of DNA samples extracted using the PS and FD kits (Figure 6A-B). In both cases, the fungal communities profiles from biochar-treated samples were grouped together (SSB and EWB). The same pattern was not observed with the ZR kit, which only yielded detectable fungal DNA from the SSB samples (Figure 6A). Furthermore, the DNA extracts recovered from replicate samples were not reproducible. Reproducibility is a very important consideration for microbial ecology studies because variability can come not only from environmental heterogeneity but also from variability introduced by sampling and analysis (Prosser, 2010).

In conclusion, the PCR-DGGE results for bacterial and fungal communities were affected by the purity and yield of the DNA obtained with different extraction methods. The appropriate DNA extraction method depends not only on the sample type and microbial population targets but also on the analytical method used. The PS and FD kits both extracted large quantities of DNA, but only the PS kit yielded high DNA purity and a tendency towards a large numbers of bands in the DGGE profiles. The ZR kit did not cover the bacterial and fungal diversity of biochar-treated sand with the same efficiency as the PS and FD kits.

Acknowledgments

The authors would like to thank to Embrapa, the National Council for Scientific and Technological Development (CNPq), the National Council for the Improvement of Higher Education (CAPES) and the Carlos Chagas Filho Foundation for Research Support of Rio de Janeiro State (FAPERJ) for their support of this work.

References

- Amonette JE, Joseph S (2009) Characteristics of biochar: microchemical properties. *In*: Lehmann, J., Joseph, S. (eds). Biochar for Environmental Management: Science and Technology, London, pp 33-52.
- Ariefdjohan MW, Savaiano DA, Nakatsu CH (2010) Comparison of DNA extraction kits for PCR-DGGE analysis of human intestinal microbial communities from fecal specimens. *Nutr J* 9-23:1-8.
- Beaton JD, Peterson HB, Bauer N (1960) Some aspects of phosphate adsorption by charcoal. *Proc Soil Sci Soc Am* 24:340-346.
- Baldrock JA, Smernick RJ (2002) Chemical composition and bioavailability of thermally altered *Pinus resinosa* (Red pine) wood. *Org Geochem* 33:1093-1109.
- Carrigg C, Rice O, Kavanagh S, Collins G, O'Flaherty V (2007) DNA extraction method affects microbial community profiles from soils and sediment. *Appl Microbiol Biotechnol* 77:955-964.
- Chan KY, Xu Z (2009) Biochar: nutrient properties and their enhancement. *In*: Lehmann, J., Joseph, S. (eds). Biochar for Environmental Management: Science and Technology, London, pp 67-84.
- Chattoraj DK, Mitra A (2009) Adsorption of DNA at solid-water interfaces and DNA - Surfactant binding interaction in aqueous media. *Curr Sci* 97-10:1430-1438.
- Cheng, CH.; Lehmann, J.; Thies, J.E.; Burton, S.D.; Engelhard, M.H. (2006). Oxidation of black carbon by biotic and abiotic processes. *Org Geochem* 37:1477-1488.
- Compant S, Clément S, Sessitsch A (2010) Plant growth-promoting bacteria in the rhizo- and endosphere of plants: their role, colonization, mechanisms involved and prospects for utilization. *Soil Biol Biochem* 42:669-678.
- De Liphthay JR, Enzinger C, Johnsen K, Aamand J, Sørensen SJ (2004) Impact of DNA extraction method on bacterial community composition measured by denaturing gradient gel electrophoresis. *Soil Biol Biochem* 36:1607-1614.
- Gardes M, Bruns TD (1993) ITS primers with enhanced specificity for basidiomycetes: application to the identification of mycorrhiza and rusts. *Mol Ecol* 2:113-118.
- Grossman JM, O'Neill BE, Tsai SM, Liang B, Neves E, Lehmann J, Thies JE (2010) Amazonian anthrosols support similar microbial communities that differ distinctly from those extant in adjacent, unmodified soils of the same mineralogy. *Microb Ecol* 60:192-205.
- Heuer H, Smalla K (1997) Application of denaturing gradient gel electrophoresis and temperature gradient gel electrophoresis for studying soil microbial communities. *In*: Elsas J.D., Trevors J.T., Wellington E.M.H. (eds) *Modern Soil Microbial*. Marcel Dekker, New York, pp 353-373.

- Holland JL, Louie L, Simor AE, Louie M (2000) PCR detection of *Escherichia Coli* O157:H7 directly from stools: evaluation of commercial extraction methods for purifying fecal DNA. *J Clin Microbiol* 38(11):4108-4113.
- Hugenholtz P, Goebel BM, Pace NR (1998) Impact of Culture-Independent Studies on the Emerging Phylogenetic View of Bacterial Diversity. *J Bacteriol* 180(18):4765-4774.
- Invitrogen. 2010. Accurate and sensitive quantitation of nucleic acids, even at low concentrations: Comparison of the Qubit IM quantitation platform with spectrophotometry. Available at: <http://www.invitrogen.com/site/us/en/home/support/Newsletters-and-Journals/BioProbes-Journal-of-Cell-Biology-Applications/BioProbes-Issues-2010/BioProbes-62/Comparison-of-Qubit-Quantitation-Platform-With-Spectrophotometry.html>. Accessed 03 november 2011.
- Jin H (2010) Characterization of microbial life colonizing biochar and biochar amended soils. NY, USA (PhD Thesis, Cornell University).
- Kim JS, Sparovek S, Longo RM, De Melo, WJ, Crowley D (2007) Bacterial diversity of terra preta and pristine forest soil from the Western Amazon. *Soil Biol Biochem* 39:648-690.
- Kwapinski W, Byrne CMP, Kryachko E, Wolfram P, Adley C, Leahy J J, Novotny EH, Hayes M. HB (2010) Biochar from Biomass and Waste. *Waste and Biomass Valorization* 1(2):177-189.
- Laird DA (2008) The charcoal vision: a win-win scenario for simultaneously producing bioenergy, permanently sequestering carbon, while improving soil and water quality. *Agron J* 100:178-181.
- Lehmann J (2007) Bio-energy in the black. *Front. Ecol Environ* 5:381-387.
- Lehmann J, da Silva J, Rondon M, Cravo MS, Greenwood J, Nehls T, Steiner C, Glaser B (2002) Proceedings of the 17th World Congress of Soil Science: Slash-and-char - A feasible alternative for soil fertility management in the central Amazon? Bangkok, Thailand, v. 1, p. 12.
- Lehmann J, Joseph S (2009) Biochar for Environmental Management: An Introduction. *In: Lehmann J, Joseph S (eds) Biochar for Environmental Management: Science and Technology*, London, pp 251-265.
- Lehmann J, Rillig MC, Thies J, Masiello CA, Hockaday WC, Crowley D (2011) Biochar effects on soil biota - A review. *Soil Biol Biochem* 43:1812-1836.
- Liang B, Lehmann J, Sohi SP, Thies JE, O'Neill B, Trujillo L, Gaunt J, Solomon D, Grossman J, Neves EG, Luizão FJ (2010) Black carbon affects the cycling of non-black carbon in soil. *Org Geochem* 41:206-213.
- McOrist AL, Jackson M, Bird AR (2002) A comparison of five methods for extraction of bacterial DNA from human faecal samples. *J Microbiol Meth* 50(2):131-139.
- Miller DN, Bryant JE, Madsen EL, Ghiorse WC (1999) Evaluation and optimization of DNA extraction and purification procedures from soil and sediment samples. *Appl Environ Microbiol* 65:4715-4724.
- Mizuta K, Matsumoto T, Hatate Y, Nishihara K, Nakanishi T (2004) Removal of nitrate-nitrogen from drinking water using bamboo powder charcoal. *Bioresour Technol* 95:255-257.
- Muyzer G, Wall EC, Uitterlinden AG (1993) Profiling of complex microbial populations by denaturing gradient gel electrophoresis analysis of polymerase chain reaction-amplified genes coding for 16S rRNA. *Am Soc Microbiol* 59(3):695-700.
- Nakatsu CH (2007) Soil microbial community analysis using Denaturing Gradient Gel Electrophoresis. *Soil Sci Soc Am J* 71(2):562-571.
- Ning J, Liebich J, Kästner M, Zhou J, Schäffer A, Burauel P (2009) Different influences of DNA purity indices and quantity on PCR-based DGGE and functional gene microarray in soil microbial community study. *Appl Microbiol Biotechnol* 82:983-993.
- Novak JM, Busscher WJ, Laird DA, Ahmedna M, Watts DW, Niandou M. (2009) Impact of biochar amendment on fertility of a southeastern coastal plain soil. *Soil Sci* 174:105-112.
- O'Neill B, Grossman J, Tsai MT, Gomes JE, Lehmann J, Peterson J, Neves E, Thies JE (2009) Bacterial Community Composition in Brazilian Anthrosols and Adjacent Soils Characterized Using Culturing and Molecular Identification. *Microb Ecol* 58(1):23-35.
- Ovreas L, Forney L, Daae F, Torsvik V (1997) Distribution of bacterioplankton in meromictic Lake S±lvenvannet, as determined by denaturing gradient gel electrophoresis of PCR-amplified gene fragments coding for 16S rRNA. *Appl Environ Microbiol* 63(9):3367-3373.
- Park JW, Crowley DE (2005) Normalization of soil DNA extraction for accurate quantification of target genes by real-time PCR and DGGE. *BioTech* 38:579-586.
- Pietikäinen J, Kiikkilä O, Fritze H (2000) Charcoal as a habitat for microbes and its effects on the microbial community of the underlying humus. *Oikos*, 89:231-242.
- Prosser JI (2010) Replicate or lie. *Environ Microbiol* 12(7):1806-1810.
- Radovic LR, Moreno-Castilla C, Rivera-Utrilla J (2001) Carbon materials as adsorbents in aqueous solutions. *In: Radovic, L.R. (eds) Chemistry and Physics of Carbon*. New York, pp 227-405.
- Rillig MC, Mummey DL (2006) Mycorrhizas and Soil Structure. *New Phytol* 171:41-53.
- Rousk J, Bååth E, Brookes PC, Lauber CL, Lozupone C, Caporaso JG, Knight R, Fierer N (2010) Soil bacterial and fungal communities across a pH gradient in an arable soil. *ISME J* 4:134-151.
- Rousk J, Brookes PC, Bååth E (2009) Contrasting soil pH effects on fungal and bacterial growth suggest functional redundancy in carbon mineralization. *Appl Environ Microbiol* 75:1589-1596.
- Santos HF, Carmo FL, Leite DCA, Jesus HE, Maalouf PC, Almeida C, Soriano A, Altomani D, Suhett L, Volaro V, Valoni E, Francisco M, Vieira J, Rocha R, Sardinha BL, Bacellar LB, João LB, Lacava B, Sebastian GV, Pessoa A, Elsas JDV, Pires D, Duarte G, Castro C, Rosado AS, Peixoto RS (2012) Comparison of different protocols for the extraction of microbial DNA from reef corals. *Braz J Microbiol* 43:517-527.
- Schwartz MW, Hoeksema JD, Gehring CA, Johnson NC, Kliromonos JN, Abbott K, Pringle A (2006) The promise and the potential consequences of the global transport of mycorrhizal fungal inoculum. *Ecol Lett* 9:501-515.
- Smit E, Leeflang P, Glandorf B, Van Elsas JD, Wernars K (1999) Analysis of fungal diversity in the wheat rhizosphere by sequencing of cloned PCR-amplified genes encoding 18S

- rRNA and temperature gradient gel electrophoresis. *Appl Environ Microbiol* 65:2614-2621.
- Steiner C, Glaser B, Teixeira WG, Lehmann J, Blum WEH, Zech W (2008) Nitrogen retention and plant uptake on a highly weathered central Amazonian Ferralsol amended with compost and charcoal. *J Plant Nutr Soil Sci* 171:893-899.
- Thies J, Suzuki K (2003) Amazonian dark earths: Biological measurements. *In: Lehman, J (ed.). Amazonian Dark Earths: Origin, Properties, Management.* Dordrecht, Netherlands, pp 287-332.
- Warnock DD, Lehmann J, Kuyper TW, Rillig MC (2007) Mycorrhizal responses to biochar in soil: concepts and mechanisms. *Plant Soil* 300:9-20.
- White TJ, Bruns TD, Lee S, Taylor J (1990) Analysis of phylogenetic relationships by amplification and direct sequencing of ribosomal RNA genes. *In: Innis MA, Gelfand DH, Sninsky JJ, White TJ (eds) PCR Protocols: a Guide to Methods and Applications.* New York, pp 315-322.
- Wilson IG (1997) Inhibition and facilitation of nucleic acid amplification. *Appl Environ Microbiol* 63:3741-3751.
- Yin B, Crowley D, Sparovek G, De Melo WJ, Borneman J (2000) Bacterial functional redundancy along a soil reclamation gradient. *Appl Environ Microbiol* 66(10):4361-4365.
- Zeyaulah M, Kamli MR, Islam B, Atif M, Benkhayal FA, Nehal M, Rizvi MA, Ali A (2009) Metagenomics - An advanced approach for noncultivable micro-organisms. *Biotech Mol Biol Rev* 4(3):49-54.

All the content of the journal, except where otherwise noted, is licensed under a Creative Commons License CC BY-NC.