

ERRATUM

In Article 13 “Resin-based sealer penetration into dentinal tubules after the use of 2% chlorhexidine gel and 17% EDTA *in vitro* study” published in the Brazilian Journal of Oral Sciences, Volume 13 Number 4, page 308-313, on page 309 where it is seen: Figure 1 is duplicated, but with the correct label. Therefore, Figure 1 has been replaced by Flowchart which was on page 309, maintaining the same label. After the publication was detected that error in the figures.

Where it reads:

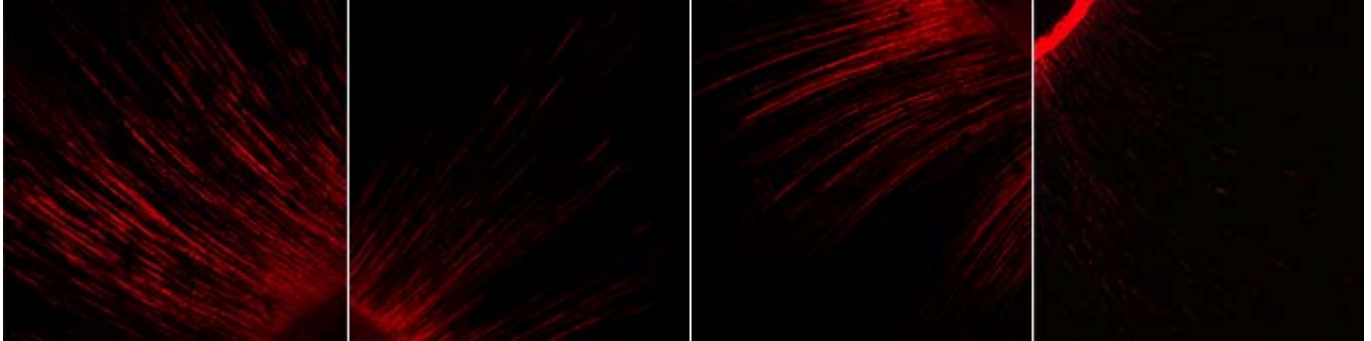


Fig. 1. Flowchart of preparation procedures.

It should read:

