

Water and sucrose diffusion coefficients during osmotic dehydration of sapodilla (*Achras zapota* L.)

Lívia Muritiba Pereira de Lima Coimbra¹ Hayanna Adley Santos de Arruda¹
Erilane de Castro Lima Machado² Silvana Magalhães Salgado³
Sônia Sousa Melo Cavalcanti de Albuquerque⁴ Samara Alvachian Cardoso Andrade^{4*}

¹Programa de Pós-graduação em Ciência e Tecnologia de Alimentos (PGCTA), Universidade Federal Rural de Pernambuco (UFRPE), Recife, PE, Brasil.

²Núcleo de Nutrição, Centro Acadêmico de Vitória, Universidade Federal de Pernambuco (UFPE), Recife, PE, Brasil.

³Departamento de Nutrição, Universidade Federal de Pernambuco (UFPE), Recife, PE, Brasil.

⁴Departamento de Engenharia Química (DEQ), Universidade Federal de Pernambuco (UFPE), Prof. Moraes Rêgo, 1235, 50670-901, Recife, PE, Brasil. E-mail: samaraandrade@uol.com.br. *Corresponding author.

ABSTRACT: Sapodilla is an original fruit from Central America that is well adapted in all regions of the Brazilian territory. Despite its wide adaptation and acceptance in fruit markets, it is rare to find it outside tropical regions, partially because of its high perishability. The development of alternative, simple, and inexpensive methods to extend the conservation and marketing of these fruits is important, and osmotic dehydration is one of these methods. The main objective of this study was to determine the water and sucrose diffusion coefficients during the osmotic dehydration of sapodilla. This process was performed in short duration (up to 6h) to evaluate detailed information on water loss and solids gain kinetics at the beginning of the process and in long duration (up to 60h) to determine the equilibrium concentrations in sapodilla. The immersion time had greater influence on the water and sucrose diffusion coefficients ($P < 0.05$); the maximum water loss (WL) and solute gain (SG) occurred in the osmotic solution at the highest concentration. Water and sucrose diffusion coefficients ranged from $0.00 \times 10^{-10} \text{ m}^2/\text{s}$ to $1.858 \times 10^{-10} \text{ m}^2/\text{s}$, and from 0.00×10^{-10} to $2.304 \times 10^{-10} \text{ m}^2/\text{s}$, respectively. Thus, understanding the WL and SG kinetics during the process of sapodilla osmotic dehydration could significantly contribute to new alternatives of preservation and commercialization of this fruit.

Key words: osmotic dehydration, mass transfer, diffusion coefficient, sapodilla.

Coefficiente de difusão da água e sacarose durante a desidratação osmótica do sapoti (*Achras zapota* L.)

RESUMO: O sapoti é um fruto originário da América Central que está bem adaptado em todas as regiões do território brasileiro. Apesar de sua ampla adaptação e aceitação, o fruto é raro fora das regiões tropicais, o que se deve em parte à sua alta perecibilidade. O desenvolvimento de métodos alternativos, simples e de baixo custo para prolongar a conservação e comercialização desses frutos é importante e a desidratação osmótica é um desses métodos. O objetivo principal desta pesquisa foi determinar os coeficientes de difusão da água e sacarose durante a desidratação osmótica de sapoti. Desidratação osmótica de sapoti foi realizada em um curto período de tempo (até 6 horas), tendo como finalidade fornecer informações detalhadas da cinética da perda de água e ganho de sólidos no início do processo, e em longos períodos de tempo (até 60 horas), a fim de determinar as concentrações de equilíbrio no sapoti. O tempo de imersão teve maior influência sobre o coeficiente de difusão da água e sacarose ($P < 0,05$); a máxima perda de umidade (PU) e ganho de solutos (GS) pela fruta ocorreram na solução osmótica de maior concentração (60°Brix). O coeficiente de difusão da água e sacarose variou de $0,00 \times 10^{-10}$ a $1,858 \times 10^{-10} \text{ m}^2 \text{ s}^{-1}$ e de $0,00 \times 10^{-10}$ a $2,304 \times 10^{-10} \text{ m}^2 \text{ s}^{-1}$, respectivamente. Assim, torna-se válida a realização desta pesquisa, tendo como objetivo conhecer a cinética da PU e GS durante a desidratação osmótica do sapoti e oferecer ao produtor uma nova alternativa para preservar e comercializar o referido fruto.

Palavras-chave: desidratação osmótica, transferência de massa, coeficiente de difusão, sapoti.

INTRODUCTION

Sapodilla is a fruit from Central America that has adapted well in all regions of the Brazilian territory; however, it has stood out as a crop in the Northeastern region of this country because of its

favorable edaphoclimatic conditions (GOMES, 2007). According to GONSALVES (2002), 100g of the fruit's pulp yield 96 calories, 75% moisture, 26% carbohydrates, 0.7% proteins, and minerals such as calcium, phosphorus, iron, and A, C, and B vitamins.

Despite its wide adaptation and acceptance in fruit markets, sapodilla is rare to find outside tropical regions, partially because its high perishability. As a climacteric fruit, its fast maturation under natural conditions hinders preservation and marketing (DAMASCENO et al., 2008). Therefore, the development of alternative, simple, and inexpensive methods to extend the conservation and marketing of these fruits is important, and osmotic dehydration is one of these methods.

Osmotic dehydration (OD) consists of partial removal of water from cellular tissues by the immersion of food (vegetables, fruits, meat) in a hypertonic aqueous solution. During the osmotic process, the mass transfer in plant tissues is complex, being influenced by the cell wall structure. The driving force for the dehydration is the higher chemical potential of water in the food cells in relation to that in the osmotic solution (OS). In contrast, the chemical potential of the solute in the OS is higher than in food cells. Thus, there are two simultaneous fluxes, i.e., water from the food to the solution, and solutes from the OS to food. Since the cell membrane is not perfect, selective leaching of solutes from the cells to the OS can also occur (TORREGGIANI, 1993; PORCIUNCULA, et al., 2013).

However, in the process of OD, solute transfer is usually limited to the differential permeability of cellular membranes, and consequently, water loss fluxes are higher than solute gain transfer along the time, especially in the beginning of osmotic process, as a consequence of the higher process driving force between the fruit and the hypertonic solution during the first hours of process (AMINZADEH, et al., 2012).

Osmotic dehydration is widely used as pre - treatment to the other process, such as hot air drying, freezing, lyophilization among others, and this treatment also has the advantage of a good conservation of sensory attributes such as color, flavor and texture.

The process of osmotic dehydration (OD) has been successfully used in several foods such as acerola (SILVA et al., 2012), pineapple (LOMBARD et al., 2008), pumpkin (SILVA et al., 2011), and banana (MERCALI et al., 2011), among others. However, this method has not been reported in OD of sapodilla.

Despite being a technology extensively studied, there is still great interest in better understanding the phenomena and description of the involved mechanisms. Mathematical modeling can be a useful tool for understanding the kinetics of OD (PORCIUNCULA, et al., 2013).

The objectives of present study were to evaluate the osmotic dehydration kinetics of sapodilla in water and sucrose solution. A simplified model based on Fick's second law was used to evaluate the effective diffusion coefficients for obtaining the detailed information on water loss and solid gain during osmotic dehydration. Knowledge of these parameters can contribute in producing fruits with longer shelf life, and therefore, extended commercialization potential.

MATERIALS AND METHODS

Refrigerated ripe sapodillas (*Achras zapota* L.) (15° to 21°Brix) (length of 68.60 ± 3.1 mm, diameter of 68.1 ± 2.2 mm) were randomly purchased at local supermarkets (in Recife-PE, Brazil). Fruits were visually selected by the peel's brown shade, ovoid shape, and absence of physical damage. They were washed in running water, dried on paper towels, and cut in four parts in the longitudinal, i.e., in quarters. Peel and seeds were manually removed.

Commercial sucrose dissolved in distilled water was used as the osmotic agent. Three levels of sucrose concentration (20°Brix, 40°Brix, and 60°Brix) were selected for a 2² factorial planning, including three central points, thus making the total number of experiments equal to 7. These concentrations were chosen based on results obtained by ANDRADE et al. (2007).

The experimental design was evaluated using coded levels named as -1, 0, and 1. The independent variables were sucrose concentration and immersion time; the dependent variables were water and sucrose diffusion coefficients (Table 1).

The process was carried out in a 1L beaker containing different concentrations of osmotic solutions at controlled temperatures ($28^{\circ}\text{C} \pm 1^{\circ}\text{C}$) with constant stirring (mechanical) (110rpm). The sample/solution ratio was 1:20 to minimize changes in concentration in the osmotic solution (ANDRADE et al., 2007). Sapodilla quarters (about 50g each quarter) were weighed, tied to colored lines (for identification of time points), and placed in the beakers.

At predetermined time intervals, sapodilla quarters were removed from the beakers, drained for 1 minute, placed on paper towels to remove excess syrup, and weighed. Samples were not rinsed with water.

The first samples were taken at early time points (0, 0.5, 1, 2, 3, 4, and 6h) to obtain detailed information about the water loss and solids gain kinetics. The next time points (12, 24, 32, 36, 48 and 60h) were used to determine the equilibrium concentration of water and sucrose.

Table 1 - Independent variables coded for osmotic dehydration of sapodilla.

Variables	-----Coded Levels-----		
	-1	0	1
Sucrose (°Brix)	20	40	60
Time (h)	4	32	60

Moisture content was determined by placing samples in an air drier at 105°C at atmospheric pressure until constant weigh was obtained (AOAC, 2002; Method 985.14). Soluble solids (°Brix) were determined using an ATAGO bench-top refractometer (Temperature 20°C). These instruments measure the degree to which light is bent as it passes through a sample (i.e., the refractive index). Refractive index is affected by the temperature of the solution. The °Brix scale is currently based on a reference temperature of 20°C (68°F). The analyses were performed in triplicate.

The rate of moisture loss during osmotic dehydration was calculated based on the analytical solution of Fick's second law as shown in equation (1), and the solids gain rate shown in equation (2), which represents a modified equation (1) (TELIS et al., 2004).

$$\frac{X - X_{eq}}{X_o - X_{eq}} = \frac{8}{\pi^2} \sum_{n=0}^{\infty} \frac{1}{(2n+1)^2} \exp\left(\frac{-D(2n+1)^2 \pi^2 t}{4L^2}\right) \quad (1)$$

$$\frac{C_o - C}{C_o - C_{eq}} = 1 - \frac{8}{\pi^2} \sum_{n=0}^{\infty} \frac{1}{(2n+1)^2} \exp\left(\frac{-D(2n+1)^2 \pi^2 t}{4L^2}\right) \quad (2)$$

Where X and C are the moisture content and sugar concentration, respectively, at time t , X_o and C_o are the initial values of these variables, and X_{eq} and C_{eq} are the corresponding equilibrium values. D is the effective diffusion coefficient and L is the slab thickness. The sapodilla samples presented an average of 1.0cm thickness measured through a caliper during osmosis.

The analyses of the results were performed using the Statistica 5.0 software (STATSOFT, 1997) at a significance level of 5%.

RESULTS AND DISCUSSION

In figures 1a and 1b are presented the water loss and solid gain curves during the sapodilla osmotic dehydration process. Increased concentrations in the solution promoted maximum water loss and solids gain. FALADE et al. (2007) observed similar results

when dehydrating watermelon rectangles using different concentrations of sucrose osmotic solutions. The authors reported that the sucrose solution at 60° Brix induced greater water loss and solids gain compared to the 50°Brix and 40°Brix solutions. These authors explained that the large concentration differences between the osmotic solution and watermelon increase the solute and water diffusion rates. KHOYI & HESARI (2007) and ANDRADE et al. (2007) reported similar results with dehydrated apricot slices and jenipapo respectively.

The reduction in water content in the first two hours of the osmotic dehydration of sapodilla was 0.5%, 1.12%, and 6.81% for the 20, 40, and 60°Brix solutions, respectively. These values are considered small and significantly lower than the values of 15.11% and 20.85% moisture loss obtained by SILVA et al. (2011) when dehydrating bleached pumpkins during 2 hours using 50 and 65°Brix sucrose solutions, respectively.

This low level of water loss in the first 2 hours of treatment might be due to characteristics in the sapodilla plant tissue, which are determinants on the mass transfer kinetics. According to CHIRALT & TALENS (2005), mass transport and movement inside the material is determined by characteristics of the cellular tissue such as cell size, porosity, tortuosity, and cell membrane permeability, among others.

In osmotic dehydration process several aspects, such as temperature, pressure, shape, contact surface, solution: fruit ratio among others (CHENLO et al., 2007) could influence in water loss and solid gain results, however, these factors were not evaluated in this present study.

Percentages of solids gain observed in the first 2 hours of the process were 0%, 9.09%, and 14.28% for the 20, 40, and 60°Brix solutions, respectively. These are low values; however, they favor the development of a product that is similar to the natural product.

Conversely, ANDRADE et al. (2007) and FALADE et al. (2007) reported higher water loss and solids gain values in the first 2 hours that decreased over time during the process. BRENNAN (2003), CHAVAN (2012) and TORREGIANI (1993) stated that water loss occurs mainly during the first 2 hours in the process, and the largest solids gain during the first 30 minutes of osmotic dehydration. After 30 minutes, the transfer speed becomes progressively slow until reaching a water loss plateau, while solids gain continues to increase until reaching equilibrium.

The water loss and solids gain (Figures 1a and 1b) increased with the progression of time.

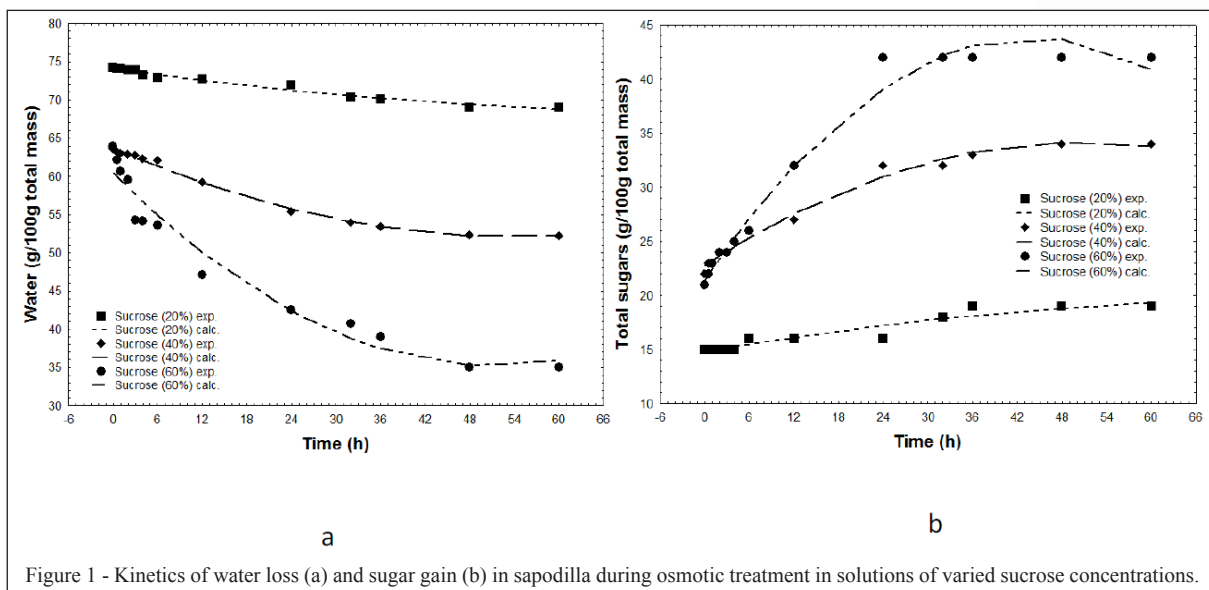


Figure 1 - Kinetics of water loss (a) and sugar gain (b) in sapodilla during osmotic treatment in solutions of varied sucrose concentrations.

Similar results were obtained by MERCALI et al. (2011), SILVA et al. (2012), and SOURAKI et al. (2012) when dehydrating banana using sucrose and salt mixed solution, acerola using sucrose solution, and green bean cylinders using salt as the osmotic agent, respectively.

Water loss reached equilibrium in 48h in all three concentrations (20, 40, and 60°Brix). Solids gain reached equilibrium in 36, 48, and 24h at the 20, 40, and 60°Brix osmotic solutions, respectively, from which significant alteration of water loss and solids gain were not observed.

Percentages of moisture loss and solids gain for the 20, 40, and 60°Brix concentrations were 7.09%, 16.85%, and 45.20%, and 26.27%, 54.54%, and 100%, respectively, at the end of the process

(60h). These results demonstrated that although the highest concentrations promote water loss they implied in greater solid gain.

According to TORREGGIANI (1993), ideally, the promotion of water loss should be attained with minimal solids gain because the impregnation of solutes to the food might modify the sensory and nutritional properties of the product. Table 2 show the equilibrium concentrations for water and sucrose, respectively, determined in sapodilla treated with different osmotic solutions.

The presence of a differentially permeable membrane rather than a semipermeable membrane in sapodilla may explain why this equilibrium required more time to be achieved than what is reported in other fruits (ANDRADE et al., 2007). According to TORTOE

Table 2 - Equilibrium concentration and effective diffusion coefficient of water and sucrose during the osmotic treatment of sapodilla.

Experiment number	S (%)	T(h)	Effective diffusion coefficient D water ($10^{-10} \text{ m}^2\text{s}^{-1}$)	Equilibrium concentration (g/100 g total mass) (water)	Effective diffusion coefficient D sucrose ($10^{-10} \text{ m}^2\text{s}^{-1}$)	Equilibrium concentration (g/100 g total mass) (sucrose)
1	20	4	1.858		2.304	
2	60	4	1.526		1.450	
3	20	60	0.00	69.00	0.0	19
4	60	60	0.00	35.00	0.0	42
5	40	32	0.391	52.00	0.209	34
6	40	32	0.395	52.31	0.210	33
7	40	32	0.388	52.20	0.207	34

(2010), factors such as chemical composition (protein, carbohydrates, fat, and salt), physical structure (porosity, cell arrangement, and fiber orientation), and pretreatments can affect the permeability of cell membrane and cell wall structure, and thus, influence water loss and solids gain in the raw material.

In this study, three different effective diffusion coefficients were calculated for water and sucrose under the conditions used for osmotic treatments. The calculation was based on data collected early in the treatment when samples were maintained in osmotic solutions for 4h. The second and third calculations used data from samples treated for longer periods, 32 and 60 hours, respectively (Table 2).

The analysis of variance of the factorial planning showed that immersion time had the greatest effect ($P < 0.05$) on both effective diffusion coefficients (water and sucrose) (Figures 2a and 2b). The greater the immersion time lower the coefficient of diffusivity of the sucrose and water. In addition, the different sucrose concentrations used in this study showed significant effects; however, with less intensity on the water and sucrose effective diffusion coefficients than immersion time.

The apparent effective diffusion coefficient of water and sucrose varied from $0.00 \times 10^{-10} \text{ m}^2\text{s}^{-1}$ to $1.858 \times 10^{-10} \text{ m}^2\text{s}^{-1}$, and from $0.00 \times 10^{-10} \text{ m}^2\text{s}^{-1}$ to $2.304 \times 10^{-10} \text{ m}^2\text{s}^{-1}$, respectively; these values are within the range of sucrose concentration and temperature evaluated in this study. According to SILVA et al. (2012), the comparison between diffusivity values

reported in the literature became difficult due to the use of different estimation methods and models in addition to composition and physical structure variation in food. As an example, SOURAKI et al. (2012) report water effective diffusion coefficients ranging from $1.776 \times 10^{-10} \text{ m}^2\text{s}^{-1}$ to $2.707 \times 10^{-10} \text{ m}^2\text{s}^{-1}$, and solutes effective diffusion coefficients ranging from $1.126 \times 10^{-10} \text{ m}^2\text{s}^{-1}$ to $1.667 \times 10^{-10} \text{ m}^2\text{s}^{-1}$ when osmotically dehydrating green bean cylinders.

Table 2 showed that with the increase in treatment time, considering the same °Brix, both water and sucrose diffusion rates decrease. According to SINGH et al. (2007), rapid water loss and solid absorption on the sample's surface at the beginning of the process may result in structural changes that lead to compression of surface layers and increased mass transfer resistance. In addition, the gradual absorption of solids can result in the formation of a superficial layer that acts as a barrier against water removal and absorption of solids. According to TELIS et al. (2004), the diffusion rate decreases, reducing the effective diffusion coefficient when the water and sucrose concentration inside the fruit become close to reaching the equilibrium value. The equilibrium is considered when are not observed significant changes in water loss and solid gain.

Table 2 showed that with the increase in °Brix, considering the same treatment time, both water and sucrose diffusion rates decrease. This fact is probably due to the formation of a thick layer of sugar around the fruit, hindering the transfer of mass.

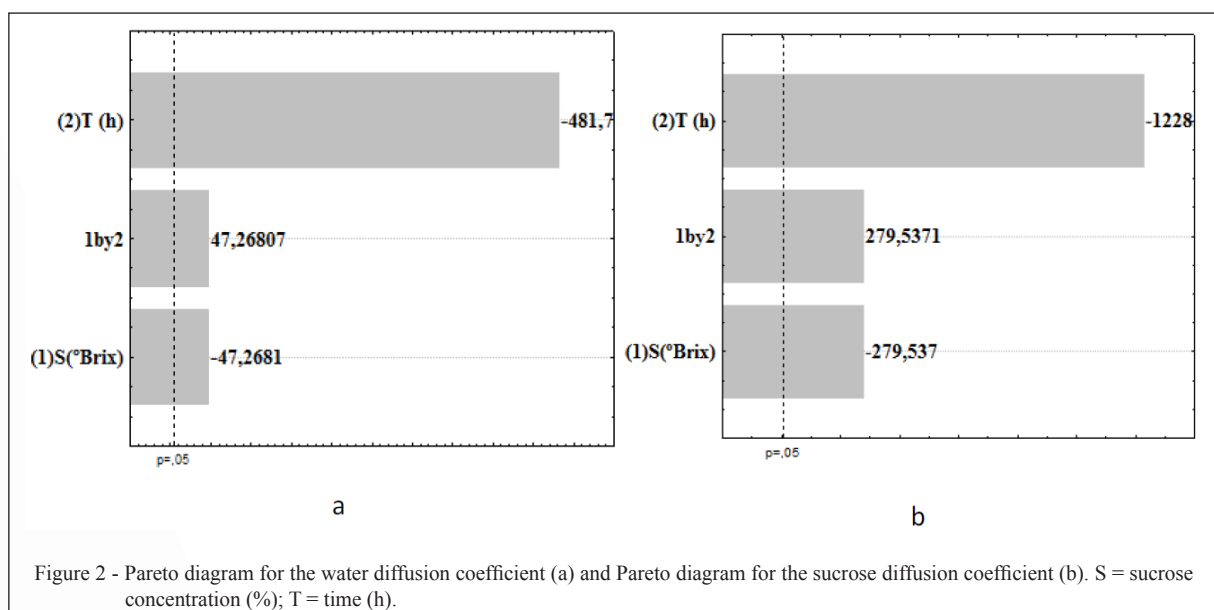


Figure 2 - Pareto diagram for the water diffusion coefficient (a) and Pareto diagram for the sucrose diffusion coefficient (b). S = sucrose concentration (%); T = time (h).

Still on the table 2, observed that an inverse behavior of immersion time over the sucrose and water diffusion coefficients, i.e., increased immersion time decreases water and solute diffusion coefficients. Similar results were obtained by BARBARA et al.(2013) when dehydrating banana (Prata variety).

During the osmotic process a non-uniform moisture gradient is developed and the effective diffusivity is not constant, i.e., varies with the position inside the sample and time of dehydration (BARBARA et al., 2013).

CONCLUSION

The immersion time showed the greatest influence on water and sucrose effective diffusion coefficients; the maximum water loss and solids gain in the studied fruit occurred in the osmotic solution of highest concentration. The apparent effective diffusion coefficients calculated for water and sucrose in the experiments conditions ranged from $0.00 \times 10^{-10} \text{ m}^2\text{s}^{-1}$ to $1.858 \times 10^{-10} \text{ m}^2\text{s}^{-1}$, and from $0.00 \times 10^{-10} \text{ m}^2\text{s}^{-1}$ to $2.304 \times 10^{-10} \text{ m}^2\text{s}^{-1}$, respectively.

ACKNOWLEDGEMENTS

The authors are thankful to Conselho Nacional de Desenvolvimento Científico e Tecnológico (CNPq) for the financial support through the process number 473208/2011-3.

REFERENCES

- AMINZADEH, R. et al. Preserving Melons by Osmotic Dehydration in a Ternary System Followed by Air-Drying. **Food and Bioprocess Technology**, v. 5, n.4, p. 1305–1316, 2012. Available from: <<https://link.springer.com/article/10.1007/s11947-010-0488-0>>. Accessed: Aug.15, 2015. doi: 10.1007/s11947-010-0488-0.
- ANDRADE, S.A.C. et al. Evaluation of water and sucrose effective diffusion coefficients during osmotic dehydration of jenipapo (*Genipa americana* L.). **Journal of Food Engineering**, v. 78 n. 2, p.551-555, 2007. Available from: <<http://www.sciencedirect.com/science/article/pii/S0260877405007296>>. Accessed: Aug.20, 2015. doi: 10.1016/j.jfoodeng.2005.10.023.
- AOAC. **Association of Official Analytical Chemists: Official Methods of Analysis**. Washington: DC, EUA, 2002. 16th ed.
- BARBARA, D.A. et al. Determining the effective diffusion coefficient of water in banana (Prata variety) during osmotic dehydration and its use in predictive models. **Journal of Food Engineering**, v.119, n.3, p. 490-496, 2013. Available from: <<http://dx.doi.org/10.1016/j.jfoodeng.2013.06.011>>. Accessed: Aug.20, 2015. doi: 10.1016/j.jfoodeng.2013.06.011.
- BRENNAN, J.G. Dielectric and osmotic drying. In: **Encyclopedia of Food Sciences and Nutrition**. London, editor: Elsevier Science, 2003. p.1938-1942. eBook ISBN: 9780080917917. Hardcover ISBN: 9780122270550.
- CHAVAN, U.D.; AMAROWICZ, R. et al. Osmotic dehydration process for preservation of fruits and vegetables. **Journal of Food Research**, v. 1, n. 2, p.201-209, 2012. Available from: <<http://dx.doi.org/10.5539/jfr.v1n2p202>>. Accessed: Sept. 05, 2015. doi: 10.5539/jfr.v1n2p202.
- CHENLO, F. et al. Osmotic dehydration of chestnut with sucrose: Mass transfer processes and global kinetics modeling. **Journal of Food Engineering**, v. 78, n. 3, p.765-774, 2007. Available from: <<https://doi.org/10.1016/j.jfoodeng.2005.11.017>>. Accessed: Sept. 10, 2015. doi: 10.1016/j.jfoodeng.2005.11.017.
- CHIRALT, A.; TALENS, P. et al. Physical and chemical changes induced by osmotic dehydration in plant tissues. **Journal of Food Engineering**, v. 67, n. 1-2, p.167-177, 2005. Available from: <<https://doi.org/10.1016/j.jfoodeng.2004.05.055>>. Accessed: Sept. 11, 2015. doi: 10.1016/j.jfoodeng.2004.05.055.
- DAMASCENO, L.F. et al. Avaliação da aceitação de sapoti de umidade intermediária. **Revista Ciência Agronômica**, v. 39, n. 1, p.177-180, 2008. Available from: <<http://www.ccarevista.ufc.br/seer/index.php/ccarevista/article/view/44>>. Accessed: Sept. 12, 2015. E-ISSN: 18066690.
- FALADE, K.O. et al. Kinetics of mass transfer, and colour changes during osmotic dehydration of watermelon. **Journal of Food Engineering**, v. 80, n. 3, p.979-985, 2007. Available from: <<https://doi.org/10.1016/j.jfoodeng.2006.06.033>>. Accessed: Sept. 12, 2015. doi: 10.1016/j.jfoodeng.2006.06.033.
- GOMES, R.P. **Fruticultura brasileira**. 13 ed. reimp. São Paulo, Editora Livraria Nobel, 2007. 446p.
- GONSALVES, P. E. **Livro dos alimentos**. 2ª ed. São Paulo. MG Editores. 2002. 261p.
- KHOYI, M.R.; HESARI, J. Osmotic dehydration kinetics of apricot using sucrose solution. **Journal of Food Engineering**, v. 78, n. 4, p.1355-1360, 2007. Available from: <<https://doi.org/10.1016/j.jfoodeng.2006.01.007>>. Accessed: Sept. 12, 2015. doi: 10.1016/j.jfoodeng.2006.01.007.
- LOMBARD, G.E. et al. Osmotic dehydration of pineapple as a pre-treatment for further drying. **Journal of Food Engineering**, v. 85, n. 2, p.277–284, 2008. Available from: <<https://doi.org/10.1016/j.jfoodeng.2007.07.009>>. Accessed: Sept. 11, 2015. doi: 10.1016/j.jfoodeng.2007.07.009.
- MERCALI, G.D. et al. Evaluation of water, sucrose and NaCl effective diffusivities during osmotic dehydration of banana (*Musa sapientum*, *shum*). **LWT - Food Science and Technology**, v. 44, n. 1, p.82-91, 2011. Available from: <<https://doi.org/10.1016/j.lwt.2010.06.011>>. Accessed: Set. 11, 2015. doi: 10.1016/j.lwt.2010.06.011.
- PORCIUNCULA, et al. Determining the effective diffusion coefficient of water in banana (Prata variety) during osmotic dehydration and its use in predictive models. **Journal of Food Engineering**, v.119, n.3, p.490-496, 2013. Available from: <<https://doi.org/10.1016/j.jfoodeng.2013.06.011>>. Accessed: Sept. 20, 2015. doi: 10.1016/j.jfoodeng.2013.06.011.

- SILVA, K.S. et al. Osmotic dehydration process for low temperature blanched pumpkin. **Journal of Food Engineering**, v. 105, n. 1, p.56-64, 2011. Available from: <<https://doi.org/10.1016/j.jfoodeng.2011.01.025>>. Accessed: Sept. 20, 2015. doi: 10.1016/j.jfoodeng.2011.01.025.
- SILVA, M.A.C. et al. Mass transfer during the osmotic dehydration of West Indian cherry. **LWT - Food Science and Technology**, v. 45, n. 2, p.246-252, 2012. Available from: <<https://doi.org/10.1016/j.lwt.2011.07.032>>. Accessed: Sept. 20, 2015. doi: 10.1016/j.lwt.2011.07.032.
- SINGH, B. et al. Study of mass transfer kinetics and effective diffusivity during osmotic dehydration of carrot cubes. **Journal of Food Engineering**, v. 79, n. 2, p.471-480, 2007. Available from: <<https://doi.org/10.1016/j.jfoodeng.2006.01.074>>. Accessed: Sept. 20, 2015. doi: 10.1016/j.jfoodeng.2006.01.074.
- ABBASI SOURAKI, B. et al. Mathematical modeling of moisture and solute diffusion in the cylindrical green bean during osmotic dehydration in salt solution. **Food and Bioprocess Processing**, v. 90, n. 1, p.64-71, 2012. Available from: <<https://doi.org/10.1016/j.fbp.2010.11.015>>. Accessed: Sept. 20, 2015. doi: 10.1016/j.fbp.2010.11.015.
- STATSOFT. **Computer program manual**. Tulsa: Statsoft. (Statistica for Windows 5.0, 1995), 1997.
- TELIS, V.R.N. et al. Diffusion coefficients during osmotic dehydration of tomatoes in ternary solutions. **Journal of Food Engineering**, v. 61, n. 2, p.253-259, 2004. Available from: <[https://doi.org/10.1016/S0260-8774\(03\)00097-9](https://doi.org/10.1016/S0260-8774(03)00097-9)>. Accessed: Sept. 20, 2015. doi: 10.1016/S0260-8774(03)00097-9.
- TORREGGIANI, D. Osmotic dehydration in fruit and vegetable processing. **Food Research International**, v. 26, n. 1, p.59-68, 1993. Available from: <[https://doi.org/10.1016/0963-9969\(93\)90106-S](https://doi.org/10.1016/0963-9969(93)90106-S)>. Accessed: Sept. 30, 2015. doi: 10.1016/0963-9969(93)90106-S.
- TORREGGIANI, D.; BERTELO, G. Osmotic pre-treatments in fruit processing: chemical, physical and structural effects. **Journal of Food Engineering**, v. 49, n. 2-3, p.247-253, 2001. Available from: <[https://doi.org/10.1016/S0260-8774\(00\)00210-7](https://doi.org/10.1016/S0260-8774(00)00210-7)>. Accessed: Oct. 20, 2015. doi: 10.1016/S0260-8774(00)00210-7.
- TORTOE, C. A review of osmodehydration for food industry. **African Journal of Food Science**, v. 4, n. 6, p.303-324, 2010. Available from: <http://intranet.foodresearchgh.org:8080/library/bitstream/0/264/1/Tortoe_Article11.pdf>. Accessed: Oct. 20, 2015. ISSN 1996-0794 ©2010 Academic Journals.