

ESTIMATION OF EVAPORATION IN THE BANABUIÚ DAM, IN THE STATE OF CEARÁ, BRAZIL, BY DIFFERENT COMBINED METHODS, DERIVED FROM THE PENMAN EQUATION

RAIMUNDO A. DE O. LEÃO¹, ANTÔNIO A. SOARES², ADUNIAS DOS S. TEIXEIRA³,
DEMETRIUS D. DA SILVA⁴

ABSTRACT: The state of Ceará, Brazil, has 75% of its area covered by Brazilian semiarid, with its peculiar features. In this state, the dams are constituted in water structure of strategic importance, ensuring, both in time and space, the development and supply of water to population. However, construction of reservoirs results in various impacts that should be carefully observed when deciding on their implementation. One of the impacts identified as negative is the increased evaporation, which constitutes a major component of water balance in reservoirs, especially in arid regions. Several methods for estimating evaporation have been proposed over time, many of them deriving from the Penman equation. This study evaluated six different methods for estimating evaporation in order to determine the most suitable for use in hydrological models for water balance in reservoirs in the state of Ceará. The tested methods were proposed by Penman, Kohler-Nordenson-Fox, Priestley-Taylor, deBruim-Keijman, Brutsaert-Stricker and deBruim. The methods presented good performance when tested for water balance during the dry season, and the Priestley-Taylor was the most appropriate, since the data from de simulated water balance with evaporation estimated by this method were the closest of the water balance data observed from measures of reservoir level and the elevation-volume curve provided by the Company of Management of Water Resources of the state of Ceará – COGERH.

KEYWORDS: dams, semiarid, hydrological modelling, water balance.

ESTIMATIVA DA EVAPORAÇÃO NO AÇUDE BANABUIÚ, NO ESTADO DO CEARÁ, POR DIFERENTES MÉTODOS COMBINADOS, DERIVADOS DA EQUAÇÃO DE PENMAN

RESUMO: O Estado do Ceará possui 75% do território abrangido pelo semiárido brasileiro, com suas características peculiares. Nesse Estado, açudes constituem-se em estrutura hídrica de importância estratégica, garantindo, no tempo e no espaço, o desenvolvimento e o abastecimento hídrico das populações. No entanto, a construção de reservatórios implica vários impactos que devem ser cuidadosamente observados no momento de decidir pela sua execução. Um dos impactos apontados como negativo é o aumento da evaporação, que se constitui em um dos principais componentes do balanço hídrico nos reservatórios, sobretudo em regiões áridas. Vários métodos de estimativa da evaporação foram propostos ao longo do tempo, muitos deles derivados da equação de Penman. Neste trabalho, foram avaliados seis diferentes métodos de estimativa da evaporação a fim de determinar qual o mais adequado para utilização em modelos hidrológicos para o balanço hídrico em reservatórios no Estado do Ceará. Os métodos avaliados foram os propostos por Penman, Kohler-Nordenson-Fox, Priestley-Taylor, deBruim-Keijman, Brutsaert-Stricker e deBruim, os quais apresentaram ótimo desempenho quando testados para o balanço hídrico durante a estação seca, sendo o de Priestley-Taylor o mais adequado, uma vez que os dados do balanço hídrico simulado com a componente evaporação estimada por este método foram os mais próximos dos dados do balanço hídrico observado a partir das medidas de nível do reservatório e da curva cota-volume fornecidos pela Companhia de Gestão dos Recursos Hídricos do Estado do Ceará - COGERH.

PALAVRAS-CHAVE: açudes, semiárido, modelagem hidrológica, balanço hídrico.

¹ Eng^o Agrônomo, Doutor, Assistente Administrativo, Departamento de Engenharia Agrícola, Universidade Federal do Ceará, Fone: (0xx85) 3366.9764, alipioleao@yahoo.com.br.

² Eng^o Agrícola, Doutor em Agricultural Irrigation Engineering pela Utah State University, Prof. Titular, Departamento de Engenharia Agrícola e Ambiental, Universidade Federal de Viçosa - MG.

³ Eng^o Agrônomo, Doutor em Engenharia Agrícola e de Biosistemas pela University of California - Davis, Prof. Associado I, Departamento de Engenharia Agrícola da Universidade Federal do Ceará.

⁴ Eng^o Agrônomo, Doutor em Engenharia Agrícola pela Universidade Federal de Viçosa, Prof. Associado IV, Departamento de Engenharia Agrícola da Universidade Federal de Viçosa - MG.

Recebido pelo Conselho Editorial em: 14-7-2011

Aprovado pelo Conselho Editorial em: 16-9-2012

INTRODUCTION

The Brazilian semiarid region is characterized by spatiotemporal irregularity of average annual precipitation of 60 mm concentrated within four months, and potential evapotranspiration of 2,000 mm; by the vegetation composition in which the Caatinga predominates, with leafless trees and shrubs during the dry season; and by the shallow soil, seated on nearly impermeable crystalline shield (ALVES et al., 2009).

These characteristics favor intense superficial drainage, given intense precipitation on soil with low storage and infiltration capacity and devoid of plant protection against the impacts of the first rains. As a result, the natural drainage is intermittent, composed by temporary and ephemeral rivers. To CAMPOS et al. (2009), these characteristics provide dry rivers most of the year and resulted in damming as the most practiced public policy for the survival of the region's population. According to KROL & BRONSTERT (2007), several small reservoirs store water for regular annual dry periods, but are unable to supply shortages resulting from several years of drought.

In the state of Ceará, the dams are strategic: make rivers perennial; provide water to urban areas; favor the production of crops of high economic value, as well as fish and shrimp farming; boost trade and tourism, and make regional industrialization possible, in addition to soften floods in years with above average precipitation.

MATOS et al. (2003) listed positive and negative impacts arising from the construction of reservoirs. Among the negative, they cited the increase of evaporative potential of water. According to ASHRAF et al. (2007), due to the high ratio surface/volume area, small reservoirs may lose up to 50% of the stored volume due to evaporation in arid and semiarid regions. Evaporation constitutes a major component of the water balance in the reservoirs and may be estimated by various methods, which are classified - according to the processes and/or instruments used - in methods of mass transfer or based on Dalton equation, water balance, energy balance, empirical and the evaporation tank, whose descriptions and foundations may be viewed on BURMAN & POCHOP, 1994; TUCCI & BELTRAME, 2004; PEREIRA et al., 1997; GIANNIOU & ANTONOPOULOS, 2007; PEREIRA et al., 2009.

Empirical or combined methods are based on Dalton equation and use meteorological parameters. BURMAN & POCHOP (1994) report that most of the combined methods is derived from the Penman method and are intended to replace difficult meteorological data by the ones easy to obtain. With the advent of automatic weather stations, acquisition of data became easier, enabling the estimation of evaporation in liquid surfaces by various combined methods, which may be compared with the evaporation determined by the water balance of the reservoir, whose other components are known.

This study aimed to evaluate different combined methods for estimating the evaporation in the Banabuiú reservoir, in the state of Ceará, and to determine the best method to use in its daily water balance, in the dry season, comparing the daily water balance observed by means of measures of reservoir level provided by the Company of Management of Water Resources of the state of Ceará State - COGERH and daily level estimated by the water balance whose evaporation component was estimated by the different methods to estimate evaporation.

MATERIAL AND METHODS

Characterization of hydrographic region of Banabuiú in the state of Ceará

Banabuiú hydrographic region lies between latitudes 4°25' and 6°10' South and longitudes 38°5' and 40°10' West (Figure 1), in the center of the state of Ceará, in Brazil, and encompasses the watersheds of Orós and Pedras Brancas dams.

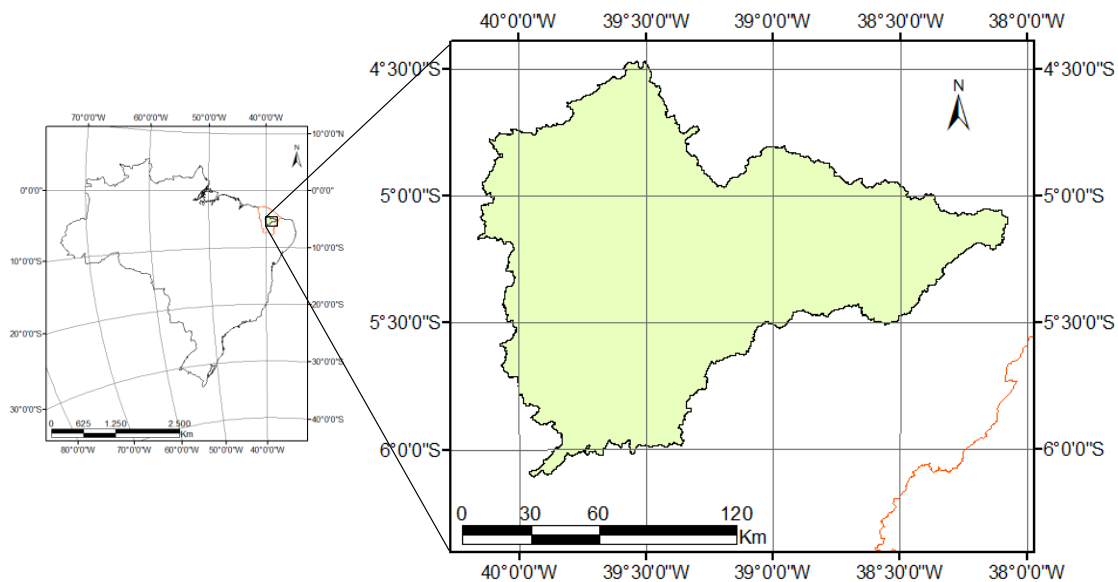


FIGURE 1. Geographical localization of Banabuiú hydrographic region.

Banabuiú River, 314 km long, drains an area of 19,314 km² and is the main tributary of the Jaguaribe River. It develops from West to East, and its estuary is near the city of Limoeiro do Norte. Its affluents on the left side are rivers Patu, Quixeramobim and Sitiá Rivers (barred by Pedras Brancas), and on the right side stands the Livramento Stream. Sitiá River flows into the Banabuiú River downstream of the barrage of Banabuiú dam. There are 17 dams monitored, totaling 2,775,909,000 m³ in storage capacity. The largest reservoirs are Banabuiú, Pedras Brancas, Cedro and Fogareiro dams. Twelve municipalities are included in Banabuiú hydrographic region. The watercourses are intermittent, and the potential of groundwaters is low and occur in fractures systems.

The climate is Semiarid Warm Tropical with mean annual temperatures from 26 to 28 °C. The mean precipitation is 725.4 mm. The geologic pattern is simple, consisting of 96.5% of rocks from the crystalline basement covered by shallow soils, prevailing Entisols, Planosols and Vertisols, and also Fluvisols along the Banabuiú River, Sodium Planosols and Eutrophic Ultisols. Open Shrubby and Dense Shrubby Caatingas predominate. Due to the high temperatures and high evaporation rates, combined with low precipitation, considerable water deficit occurs, and the flow of natural drainage net is virtually restricted to the rainy season (CEARÁ, 2009).

Estimation of evaporation

Evaporation in Banabuiú dam was estimated by six different semi-empirical methods: Penman (P), Kohler-Nordenson-Fox (K-N-F), Priestley-Taylor (P-T), deBruin-Keijman (dB-K), Brutsaert-Stricker (B-S) and deBruin (dB).

Penman method (eq.(1)) comprises two previous theoretical approaches: aerodynamic basis (evaporation occurs due to the transport of water vapor) and energetic basis (evaporation is one of the means of degradation of energy from the radiation). Kohler-Nordenson-Fox method (eq.(2)) - which, according to BURMAN & POCHOP (1994), is one of the most widely used - considers the evaporation in a reservoir equivalent to 70% of the evaporation in class A tank. Priestley-Taylor method (eq.(3)) considers the equilibrium condition (the air in contact with the wet surface is saturated and the advection is minimal), and evaporation is determined by radiant energy, resulting, as TANNY et al. (2008), in a simplified Penman method, where only the radiation term is preserved and multiplied by a constant empirically determined. deBruin-Keijman method (eq.(4)) estimates evaporation as a function of relative air humidity above the reservoir, the heat stored in the reservoir and the psychrometric constant. Brutsaert-Stricker method (eq.(5)) involves the effect of regional advection on potential evaporation and an assumed symmetry between potential evaporation and

real evaporation in relation to the evaporating power of air in the absence of advection; and deBruin method (eq.(6)) estimates evaporation in shallow reservoirs or ponds. Equations of the six methods are described below:

$$E_1 = 86,4 \frac{\Delta}{\Delta + \gamma} \frac{R_n - G}{\lambda \rho} + \frac{\gamma}{\Delta + \gamma} 0,26(0,5 + 0,54u_2)(e_s - e_a) \quad (1)$$

$$E_1 = 0,0353 \left(0,7 \frac{\Delta R_n + \gamma E_a}{\Delta + \gamma} \right) \quad (2)$$

$$E_1 = 86,4\alpha \frac{\Delta}{\Delta + \gamma} \frac{R_n - G}{\lambda \rho} \quad (3)$$

$$E_1 = 86,4 \frac{\Delta}{0,85\Delta + 0,63\gamma} \frac{R_n - G}{\lambda \rho} \quad (4)$$

$$E_1 = 86,4(2\alpha - 1) \frac{\Delta}{\Delta + \gamma} \frac{R_n - G}{\lambda \rho} - \frac{\gamma}{\Delta + \gamma} 0,26(0,5 + 0,54u_2)(e_s - e_a) \quad (5)$$

$$E_1 = 86,4 \left[1,192 \frac{\alpha}{\alpha - 1} \frac{\gamma}{\Delta + \gamma} \frac{(2,9 + 2,1u_2)}{\lambda \rho} \right] \quad (6)$$

In which,

E_l - evaporation in the lake, mm d⁻¹;

Δ - slope of the curve of saturation vapor pressure *versus* temperature, kPa °C⁻¹;

γ - psychrometric coefficient, kPa °C⁻¹;

R_n - liquid radiation, W m⁻²;

E_a - aerodynamic function, W m⁻²;

$\alpha = 1,26$ - Priestley-Taylor constant, obtained empirically and dimensionless;

λ - latent heat of vaporization, MJ kg⁻¹;

$\rho = 1000$ - density of water, kg m⁻³;

u_2 - wind speed measured 2m above the surface, m s⁻¹;

e_s - vapor saturation pressure to air temperature, mbar, and

e_a - current vapor pressure, mbar.

It was developed a spreadsheet in Excel Software for calculation of evaporation from the meteorological data measured in data collection platforms (DCPs), monitored by Ceará Foundation for Meteorology and Hydro Resources (Funceme), considering the area of influence of the reservoir hydraulic basin, determined by Thiessen polygons technique.

The estimation of evaporation in the reservoir was converted to evaporated volume according to eq.(7):

$$VEv_i = 10 \overline{Ev}_i A_i \quad (7)$$

In which,

VEv_i - evaporated volume on i day, m³;

\overline{Ev}_i - mean evaporation on i day, mm, and

A_i - reservoir area on the day, m².

\overline{Ev}_i is determined by the mean of estimated evaporation from the data obtained for each DCP with area of influence over the reservoir, weighted by the area of influence, according to eq.(8).

$$\overline{Ev}_i = \frac{1}{A_i} \sum_{dcp=1}^{ndcp} A_{dcp} Ev_{dcp,i} \tag{8}$$

In which,

$Ev_{dcp,i}$ - evaporation estimated by a determined DCP, on i day, mm;

A_{dcp} - area of influence of DCP over the reservoir, on i day, m^2 , and

$ndcp$ - number of DCPs considered.

The determination of the most appropriate method for estimating the evaporation in Banabuiú dam was made by comparing the stored volumes observed (based on data from reservoir level measured by the Company of Management of Water Resources of the state of Ceará - COGERH, daily) to the estimated stored volumes. The estimated stored volumes were obtained by the daily water balance in the reservoir.

Water balance in the reservoir

It was adopted the daily water balance in the reservoir based on conservation of mass, according to the following equation:

$$Vstor_{i+1} = Vstor_i + Vprec_i + Vaf_i - Vef_i - Vev_i \tag{9}$$

In which,

$Vstor_{i+1}$ - stored volume at the end of the day, m^3 ;

$Vstor_i$ - stored volume at the beginning of the day, m^3 ;

$Vprec_i$ - precipitated volume on i day, m^3 ;

Vaf_i - affluent volume on i day, m^3 ;

Vef_i - effluent volume on i day, m^3 ,

Vev_i - evaporated volume on i day, m^3 .

The water balance was conducted during the dry season, from July 1st to December 31st, 2005, when precipitation in the area was insufficient to generate superficial drainage, only precipitating 21 mm, 10.6 mm on July 8th, 2005, and the rest in two precipitation occurred in August and five occurred in December, and the highest one was 4 mm, as seen in Figure 2. During this period, the affluent volume to the reservoir is due to flow released in smaller reservoirs upstream of Banabuiú dam (Figure 3), due to the intermittency of watercourses in the region.

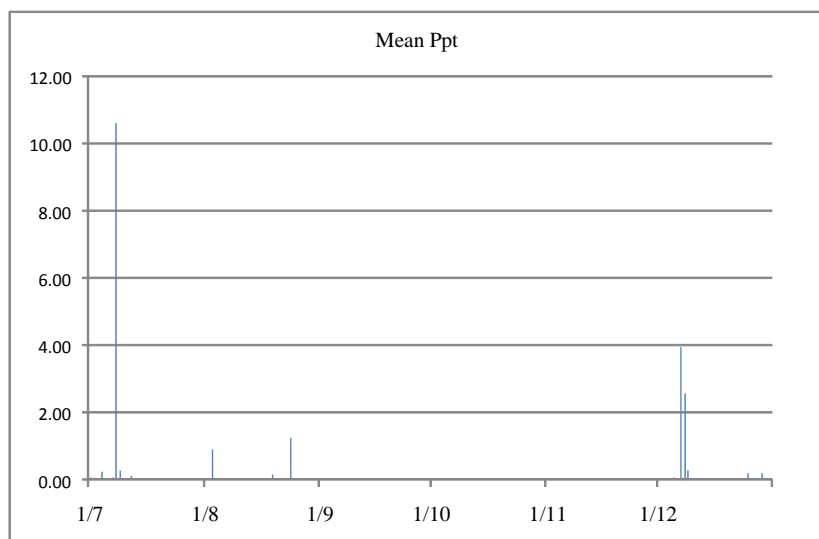


FIGURE 2. Mean precipitation in the watershed of Banabuiú dam, from July 1st to December 30th, 2005.

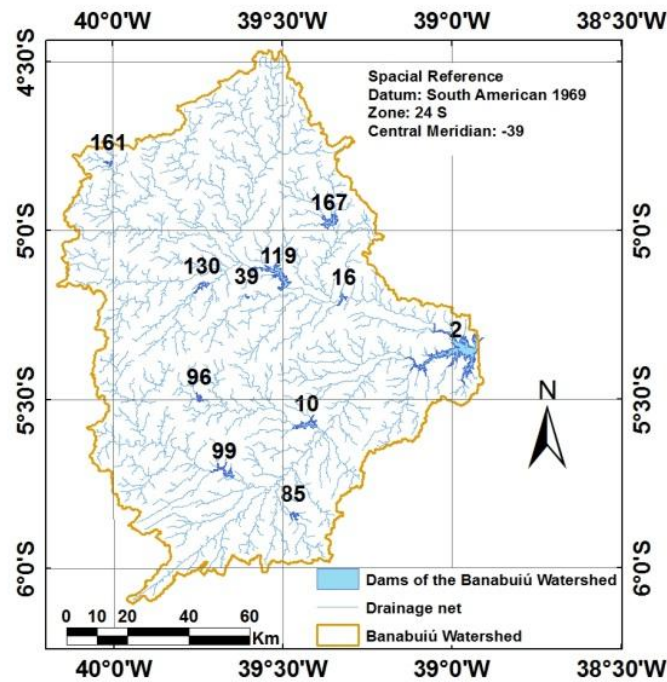


FIGURE 3. Watershed of Banabuiú dam (2), with the reservoirs upstream and controlled by the State: Patu (10); Quixeramobim (16); São José I (39); São José II (85); Trapiá II (96); Serafim Dias (99); Fogareiro (119); Vieirão (130); Monsenhor Tabosa (161); and Pirabibu (167).

Precipitated volume

The term V_{prec_i} of eq.(9) was obtained by multiplying the precipitation registered in Figure 3 by the reservoir area.

Stored volume

The term V_{stor_i} of eq.(9) was determined using daily data of the water level measured in the reservoir and of elevation-volume, both supplied by the Company of Management of Water Resources of the state of Ceará - COGERH. The elevation-volume curves were determined by fitting a polynomial of fourth degree.

Effluent volume

Daily values of V_{ef} were calculated based on data of flow released daily in the reservoir, obtained from COGERH. To calculate the effluent volume, it was used the following equation:

$$V_{ef} = 86400 Q_r \quad (12)$$

In which,

Q_r - flow released, $m^3 s^{-1}$.

Affluent volume

Given that there was no sufficient precipitation during the period for the occurrence of superficial drainage (Figure 2), the affluent volume to the reservoir was obtained from the flows released in reservoirs upstream, subjected to Muskingun-Cunge method for the transfer of the hydrogram, excerpt to excerpt, from the output of those reservoirs to the Banabuiú dam. Each excerpt of the pathway, thus considering the segment of the natural course between one and another bifurcation (Figure 3). This procedure was performed in a spreadsheet of Excel Software, from Microsoft, according to the calculations described below.

In Figure 3, it is possible to observe the ten dams of the watershed of Banabuiú dam with flow control by the state. Of these dams, only four (Patu, Quixeramobim, São José II and Serafim Dias) release water directly into the Banabuiú. The Trapiá II dam releases into the Patu; the São José I, Fogareiro and Pirabibu dams release into Quixeramobim; and Vieirão and Monsenhor Tabosa dams release into Fogareiro. Table 1 shows the recorded dates of change in flow released from the four reservoirs that release water to the Banabuiú dam and the flow released, in L s⁻¹.

TABLE 1. Flows released into Patu, Quixeramobim, Serafim Dias and São José II dams, in L s⁻¹, and dates of changes in operation, in the dry period of 2005.

Date of Operation	Patu (10)	Quixeramobim (16)	Serafim Dias (99)	São José II (85)	Date of Operation	Patu (10)	Quixeramobim (16)	Serafim Dias (99)	São José II (85)
01/07/2005	150	250	57	45	17/10/2005	650	435	210	45
29/07/2005	150	250	120	45	24/10/2005	550	435	210	45
03/08/2005	250	250	120	45	01/11/2005	450	435	210	45
09/08/2005	250	250	170	45	18/11/2005	450	435	286	45
12/08/2005	250	435	170	45	21/11/2005	550	435	286	45
18/08/2005	250	435	340	45	05/12/2005	550	435	0	45
24/08/2005	250	435	170	45	07/12/2005	674	435	514	45
14/09/2005	250	435	266	45	10/12/2005	674	435	273	45
16/09/2005	500	435	266	45	15/12/2005	400	435	273	45
18/09/2005	500	435	150	45	20/12/2005	400	350	273	45
20/09/2005	400	435	150	45	26/12/2005	400	350	150	45
26/09/2005	400	435	350	45	28/12/2005	400	300	150	45
27/09/2005	350	435	350	45	29/12/2005	470	300	150	45
10/10/2005	550	435	250	45	31/12/2005	470	300	150	45
14/10/2005	550	435	210	45					

The pathway of the hydrogram since the release into each of the four dams that release into the Banabuiú was performed considering the following relations. The input ($I_{t(d)}^m$) on a particular excerpt (m), at the beginning of the day [$t(d)$], is equal to the sum of the outputs ($O_{t(d)}^{(m-1)1} + O_{t(d)}^{(m-1)2}$), at the beginning of the day [$t(d)$], in both excerpts upstream $[(m-1)1]$ and $[(m-1)2]$:

$$I_{t(d)}^m = O_{t(d)}^{(m-1)1} + O_{t(d)}^{(m-1)2} \tag{13}$$

The input ($I_{t+1(d)}^m$) on a particular excerpt (m), at the end of the day [$t+1(d)$] is equal to the sum of the outputs ($O_{t+1(d)}^{(m-1)1} + O_{t+1(d)}^{(m-1)2}$), at the end of the day [$t+1(d)$], in both excerpts upstream $[(m-1)1]$ and $[(m-1)2]$:

$$I_{t+1(d)}^m = O_{t+1(d)}^{(m-1)1} + O_{t+1(d)}^{(m-1)2} \tag{14}$$

The output ($O_{t(d)}^m$) of a particular excerpt (m), at the beginning of the day [$t(d)$] is equal to the output ($O_{t+1(d-1)}^m$), at the end of the previous day [$t+1(d-1)$], of the same excerpt:

$$O_{t(d)}^m = O_{t+1(d-1)}^m \quad (15)$$

The output ($O_{t+1(d)}^m$) of a particular excerpt (m), at the end of the day [$t(d)$], is estimated by the Muskingum-Cunge, depending on the previous three flows:

$$O_{t+1(d)}^m = C_1 I_{t+1(d)}^m + C_2 I_{t(d)}^m + C_3 O_{t(d)}^m \quad (16)$$

In which,

$$C_1 = \frac{-KX + 0.5\Delta.}{K(1+X) + 0.5\Delta.} \quad (17)$$

$$C_2 = \frac{KX + 0.5\Delta.}{K(1+X) + 0.5\Delta.} \quad (18)$$

$$C_3 = \frac{K(1-X) - 0.5\Delta.}{K(1+X) + 0.5\Delta.} \quad (19)$$

and

$$C_1 + C_2 + C_3 = 1 \quad (20)$$

In which,

K - constant of transit time and has unity of time;

X - weighting factor, dimensionless, and

Δt - time interval required for the hydrogram to go through a particular excerpt of the river.

TUCCI & BELTRAME (2004) describes the method proposed by Cunge, in 1969, to estimate the values of K , X and Δt , according to the following equations:

$$X = \frac{1}{2} \left(1 - \frac{Q_0}{BS_0 c_k \Delta x} \right) \quad (21)$$

$$K = \frac{\Delta x}{c_k} \quad (22)$$

$$\Delta t = \frac{t_p}{5} \quad (23)$$

In which,

Q_0 - mean flow of the river excerpt, in $m^3 s^{-1}$;

B - mean width of the river excerpt, on the surface, in m;

S_0 - declivity of the river excerpt, in $m m^{-1}$;

c_k - celerity of hydrogram, in $m s^{-1}$;

Δx - length of the excerpt of the channel crossed by the hydrograph of c_k celerity, in Δt time, in m, and

t_p - peak time of the watershed drained by the excerpt of river, in s.

The term Q_0 was estimated by the mean of flows known in Muskingum method (Equation 16). The terms B and S_0 were provided as input data in the model and were obtained by means of Geographic Information System (GIS) software. The peak time was determined according to the relation to the concentration time of the watershed, as TUCCI & BELTRAME (2004):

$$t_p = 0,6t_c \quad (24)$$

The concentration time, in its turn, was determined by Ven Te Chow equation (Equation 25), obtained for watersheds of up to 24.28 km² (PRUSKI et al., 2006). This area covers all watersheds of the excerpts that compose the watershed of Banabuiú dam.

$$t_c = 52.64 \left(\frac{L}{\sqrt{S_0}} \right)^{0.64} \quad (25)$$

In which,

L - length of the river excerpt of the watershed, in km, and

S_0 - mean slope of the thalweg, same as eq.(21), but in m km⁻¹.

The term L was also determined by the GIS software. The celerity of the hydrogram (c_k) was determined from Manning equation, considering the roughness coefficient in all excerpts of rivers in the watershed as $n = 0,035$:

$$c_k = 1.67 \frac{S_0^{0.3} Q_0^{0.4}}{n^{0.6} B^{0.4}} \quad (26)$$

Thus, the increment of distance for implementing Muskingun-Cunge method was determined by the non-linear equation presented in TUCCI & BELTRAME (2004), using the iterative method of Newton-Rapson:

$$\Delta x = 0.761 \frac{c_k \Delta t}{\left[1 - \frac{Q_0}{B c_k S_0 \Delta x} \right]^{1.25}} \quad (27)$$

RESULTS AND DISCUSSION

Stored, precipitated, affluents and effluents volumes

Figure 4 expose daily precipitated (A), affluents (B) and effluents (C) values and the stored volumes observed in the reservoir. The precipitated volume was around 3.2 hm³, and about 50% (1.4 hm³) of this value occurred on July 8th, 2005, as shown in Figure 3. All volume precipitated in the dry period amounted to 0.29% of the mean volume stored (1,116.3 hm³) and 1.41% of the volume lost (229.1 hm³) in the reservoir during this period.

The affluent total volume in the period was 6.4hm³, corresponding to 0.6% of the mean volume stored and 2.8% of volume lost in Banabuiú dam in the second semester of 2005. The constant affluent volume shown between October 1st and December 15th, 2005, (Figure 3 C) reflects the absence of precipitation in the watershed and little flow variation released in reservoirs upstream of Banabuiú. In a simulation conducted in Trussu dam, whose watershed borders the one of Banabuiú, CAMPOS (2010) noted that, from July to November, the affluence to the reservoir was practically zero. CAMPOS et al. (2009) observe that the mean annual hydrograph of Jaguaribe River characterizes well the hydrological regime of the state of Ceará, with the rivers remaining dry in the months from July to November, almost every year.

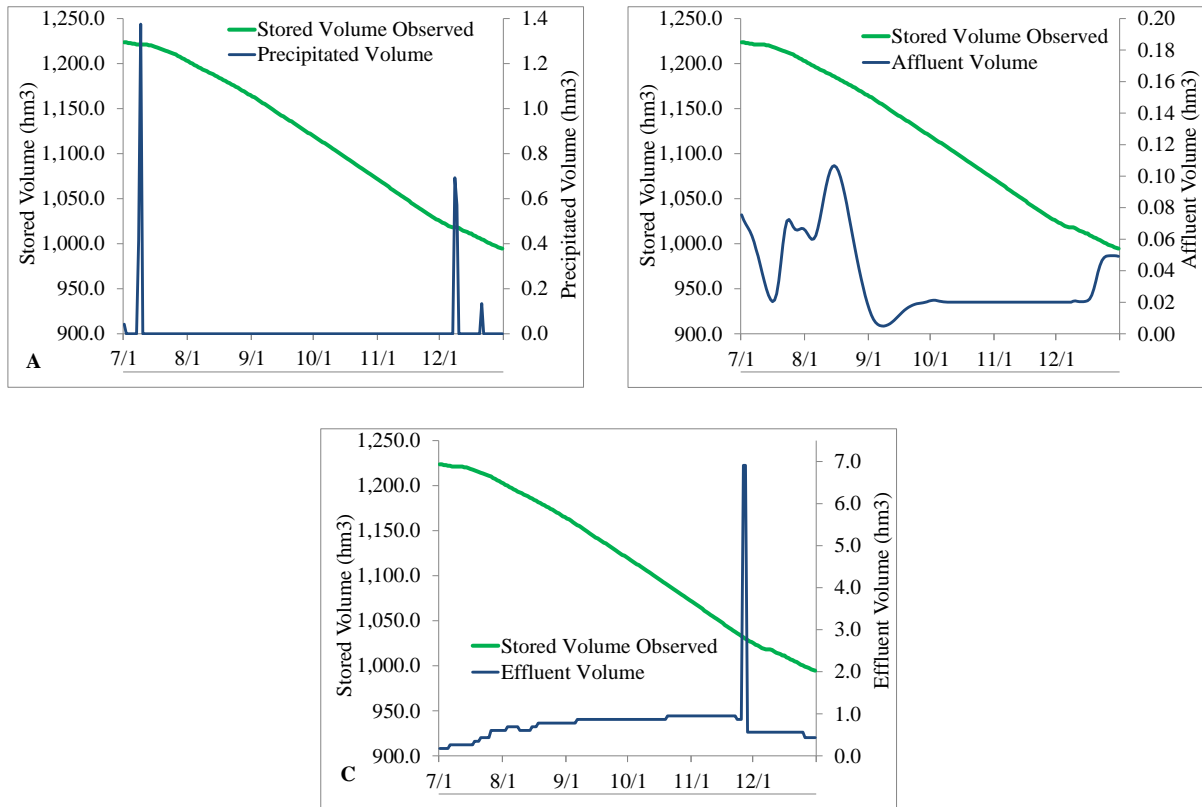


FIGURE 4. Daily variation of stored volume and precipitated (A), and affluent (B), and effluent (C) volumes in Banabuiú reservoir, State of Ceará, from July 1st to December 31st, 2005.

The total effluent volume (141.7 hm³) accounted for 12.7% of the mean stored volume in the period and 61.8% of the total lost in the reservoir in the second semester of 2005.

Estimation of evaporation

According to Thiessen polygon technique performed in the watershed of Banabuiú, just Quixadá DCP, located at coordinates 4°59'18.5" S and 39°0'40.2" W, has an area of influence on the watershed of Banabuiú dam (Figure 5).

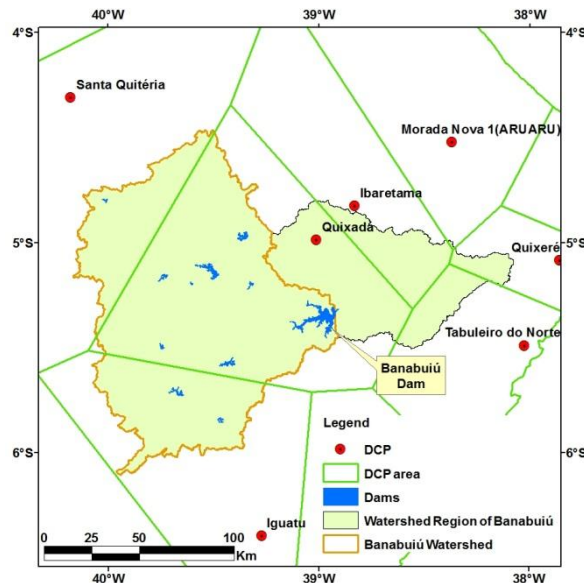


FIGURE 5. Collection platforms of meteorological data and its area of influence in the hydrographic region of Banabuiú, according to Thiessen polygon method.

Figure 6 presents the daily variations of evaporation in Banabuiú reservoir, in 2005, according to the methods of Kohler-Nordenson-Fox (K-N-F), Priestley-Taylor (P-T), Penman (P), deBruin-Keijman (dB-K), Brutsaert-Stricker (B-S), and deBruim (dB), as well as the mean precipitation in the watershed. Visually, it is clear that dB method underestimates evaporation during the rainy season and overestimates out of it, compared to the other methods, and has the highest amplitude in evaporation data throughout the year. In the dry period, the estimate of evaporation is higher in dB, followed by P, dB-K and P-T, and K-N-F and B-S. In the rainy season, the estimation of evaporation is lower in K-N-F and dB and higher in P-T, P, dB-K and B-S.

Of the six methods for estimating evaporation mentioned above, only the method K-N-F has not been evaluated by ROSENBERRY et al. (2007) in a mountainous region in the northeastern United States. The other methods were compared to the energy balance method, according to the authors, considered standard. The methods P-T, dB-K and P had values that did not deviate by more than 20% of the standard method during 90% of the studied period, being the most appropriate. When examining Figure 6, it is observe that, for Banabuiú dam, these methods also have similar results, primarily P-T and dB-K, whose curves overlap over the 2005, and the P method disagrees with them on the drought period.

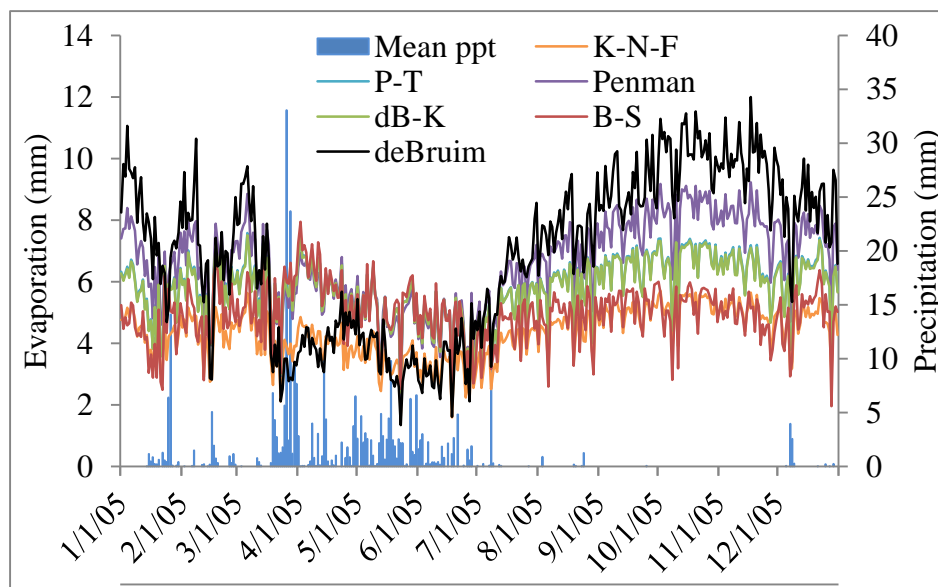


FIGURE 6. Evaporation in Banabuiú reservoir, throughout 2005, estimated according to the methods of Kohler-Nordenson-Fox (K-N-F), Priestley-Taylor (P-T), Penman (P), deBruin-Keijman (dB-K), Brutsaert-Stricker (B-S), deBruim (dB) and mean precipitation in the watershed of the reservoir (*Ppt media* - Mean precipitation).

LEITÃO et al. (2007) studied the performance of different methods for estimating the evaporation in Cariri and Sertão regions, of the state of Paraíba, including P and K-N-F methods. The results, just as in this study, presented that, in higher evaporation period, the estimate of evaporation by P is higher than the estimated by K-N-F.

LEITÃO et al. (2009) analyzed the behavior of the evaporation estimated in Pedras Brancas dam by the aforementioned methods, ranging 1% up or down, the values of climatological parameters (maximum and minimum temperature, maximum and minimum relative humidity, mean wind speed and solar radiation) measured by automatic stations. The authors found a higher sensibility of deBruin method to the increase or decrease by 1% of all parameters, except for solar radiation, for which was the second most sensitive. This result is consistent with the behavior shown in Figure 6 by dB method, which showed greater variation in the estimated evaporation over the years in Banabuiú.

As can be seen in Table 2, which presents the descriptive statistics of climatological data used to estimate the evaporation in this study, the coefficient of variation indicates that the highest data variation occurs for WSmea, followed by RHmin and SR.

TABLE 2. Descriptive statistics of climatological data obtained in Quixadá Data Collection Platform, in the dry period, in 2005.

Statistics	Tmax °C	Tmea °C	Tmin °C	RHmax %	RHmea %	RHmin %	WSmea m s ⁻¹	SR kJ m ⁻² dia ⁻¹
Minimum	29.56	25.37	18.10	69.26	47.62	19.96	1.86	9,867.89
1st Quartile	33.58	27.27	20.85	81.40	53.54	25.18	3.05	19,645.24
Mean	34.30	28.13	21.96	84.86	56.68	28.49	3.48	20,986.99
Medium	34.42	28.33	22.20	84.35	56.22	27.62	3.57	21,686.31
3rd Quartile	35.28	28.99	23.02	89.18	59.04	30.41	3.99	23,588.44
Maximum	36.72	30.61	25.26	94.70	73.45	54.89	4.71	25,599.45
Standard deviation	1.30	1.11	1.56	5.19	4.31	5.25	0.66	3,448.41
Amplitude	7.16	5.25	7.16	25.44	25.83	34.93	2.85	15,731.56
Coefficient of variation	3.8%	4.0%	7.1%	6.1%	7.6%	18.4%	18.9%	16.4%

Tmax - maximum temperature; Tmea - mean temperature; Tmin - minimum temperature; RHmax - maximum relative humidity; RHmea - mean relative humidity; RHmin - minimum relative humidity; WSmea - mean wind speed; and SR - solar radiation.

The distributions of the evaporation estimates by the different studied methods, in the period from July 1st to December 31st, 2005, are illustrated in Figure 7. The greatest variation of the data occurred in dB method and the lowest occurred in K-N-F method. It was also observed that the highest estimates were verified by dB and P methods, the lowest by K-N-F and B-S methods, and the intermediate estimates by P-T and dB-K methods.

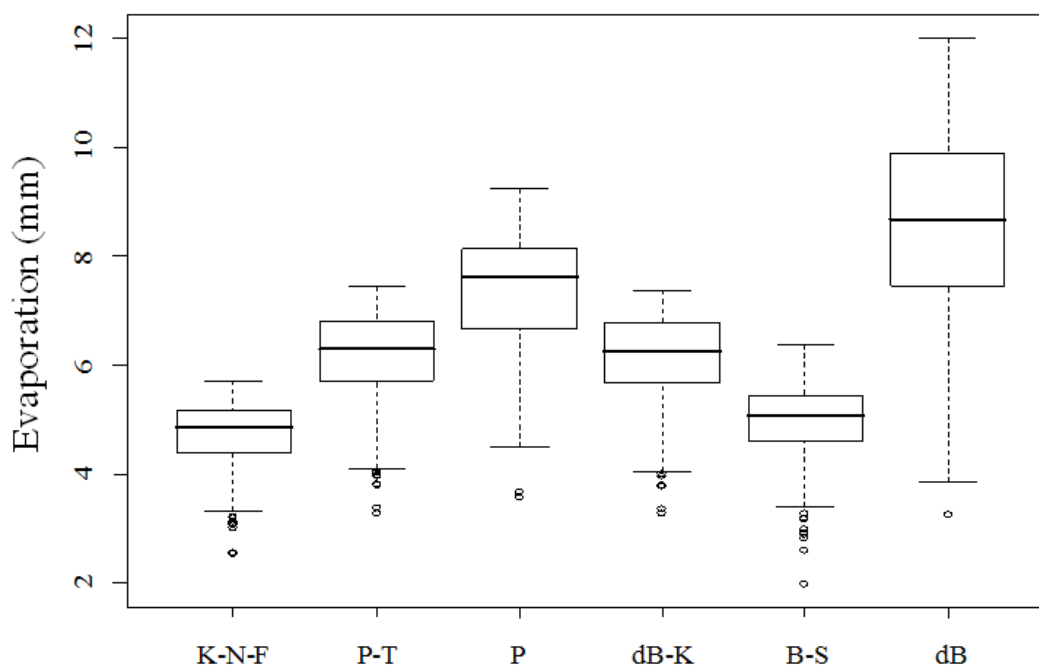


FIGURE 7. Distribution of evaporation estimate by the methods of Kohler-Nordenson-Fox (K-N-F), Priestley-Taylor (P-T), Penman (P), DeBruine-Keijman (dB-K), Brutsaert-Stricker (B-S) and deBruim (dB) in Banabuiú reservoir, during the dry period of 2005.

The values of total evaporation estimated by the six methods studied, in the second semester of 2005, in Banabuiú dam are presented in Table 3. It is noted that the dB method presented overestimation of evaporation compared to the other methods, varying from 81.6% (comparing to K-N-F) to 16.5% (comparing to P). The K-N-F method underestimated evaporation, ranging from 55.1% of the estimate obtained by dB method to 95.6% of the estimate obtained by B-S.

TABLE 3. Evaporated depth and volume in Banabuiú dam, according to the different methods of evaporation estimate, in 2005.

Method	K-N-F	P-T	P	dB-K	B-S	dB
Depth (mm)	864.51	1,125.58	1,347.15	1,117.41	904.01	1,569.67
Volume (hm ³)	81.32	105.89	126.54	105.14	85.25	147.08

K-N-F - Kohler-Nordenson-Fox, P-T - Priestley-Taylor, P - Penman, dB-K - deBruin-Keijman, B-S - Brutsaert-Stricker, dB - deBruim

Considering the variation of the volume stored in the reservoir between January 1st and December 31st, 2005, which was from 1252.9 hm³ to 994.5 hm³, therefore 258.4 hm³, the methods studied showed that the evaporation estimate ranged from 31.4 to 56.9% of volume lost in the reservoir. P-T and dB-K methods, whose evaporation estimates were very close, accounted for about 41% of the volume lost in the reservoir. ARAÚJO & PIEDRA (2009) estimated evaporation corresponding to 55% of the volume stored in reservoirs in Aiuaba-CE.

PEREIRA et al. (2009) found 1,904 mm of annual depth evaporated on Sobradinho Lake, estimated by K-N-F method, around 21% above the estimate for Banabuiú dam.

The performance of the methods in evaporation estimate can be seen by Figure 8, in which are the variations of the stored, observed and estimated volumes by six the methods, during the second semester of 2005. This figure presents the mean precipitations in the watershed of the reservoir, where it can be seen that there was practically no precipitation, greatly reducing the affluent volume into the reservoirs at this period, especially considering the intermittency of most natural drains. In this period, only the rivers transformed in perennial by some reservoir upstream contribute to this type of input.

Since the other components of the water balance as effluent volume and precipitated volume into the reservoir are insignificant, and, as the affluent volume is the lowest, the largest source of error in the balance turn out to be due to the evaporation estimate.

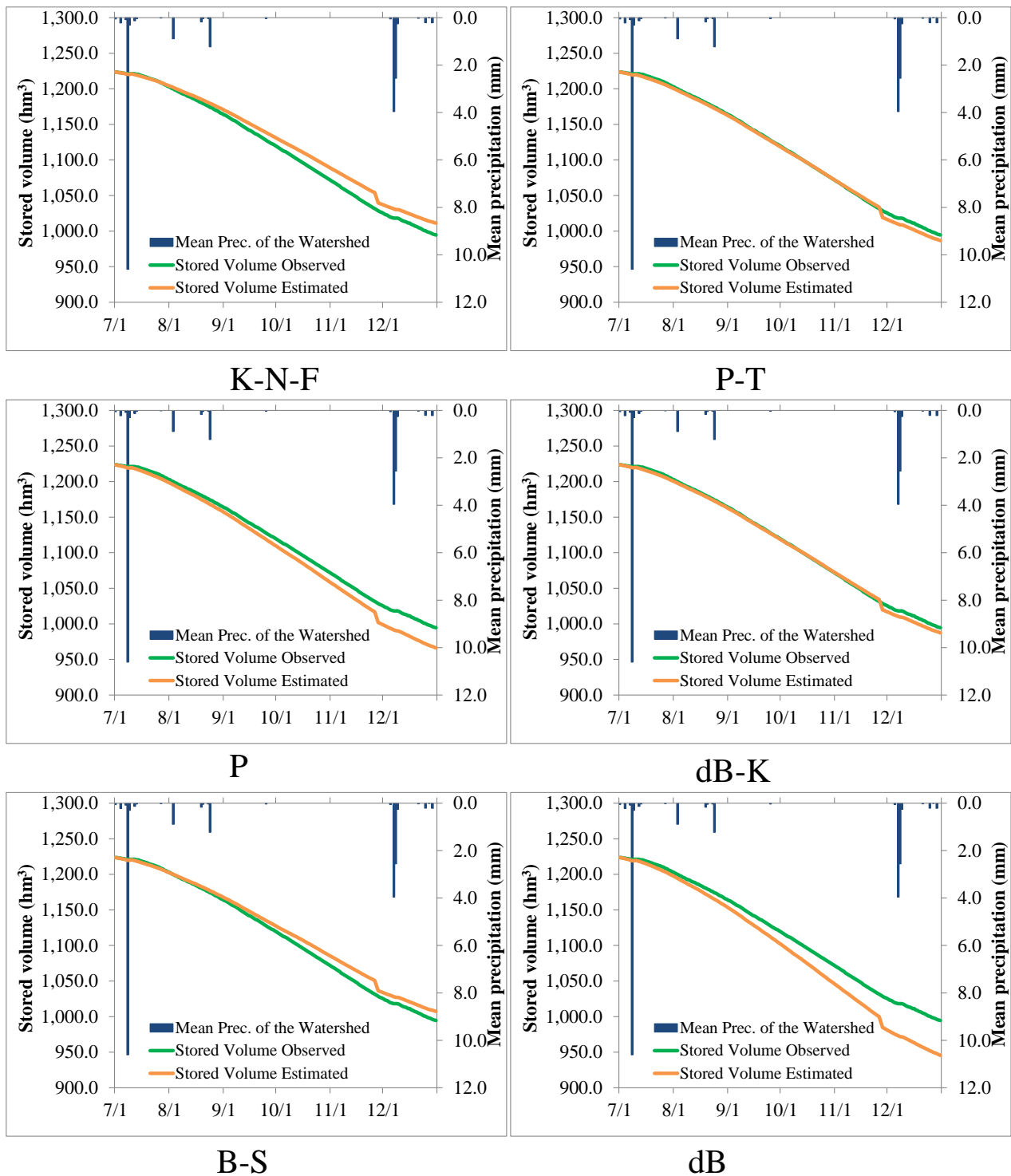


FIGURE 8. Volume daily stored, observed and estimated by the methods of Kohler-Nordenson-Fox (K-N-F), Priestley-Taylor (P-T), Penman (P), deBruim-Keijman (dB-K), Brutsaert-Stricker (B-S) and deBruim (dB); and mean precipitation in the watershed of Banabuiú dam, in the second semester of 2005.

Table 4 shows the statistical results used to evaluate the performance of the water balance estimate realized by the model developed, in the second semester of 2005, using the six methods of evaporation estimate in Banabuiú. These results indicate “Optimal” performance ($c > 0,85$), regardless of the method of evaporation estimate. They also indicate that P-T, P and dB-K provide estimates of the stored volume near the observed results, which demonstrate that the methods used are estimating well the evaporation.

TABLE 4. Performance of water balance estimate during dry period as a function of the method used in the evaporation estimate in Banabuiú reservoir.

Statistics	Banabuiú					
	K-N-F	P-T	P	dB-K	B-S	dB
R	0.9989	0.9992	0.9993	0.9992	0.9991	0.9992
Id	0.9833	0.9991	0.9967	0.9990	0.9882	0.9851
C	0.9823	0.9983	0.9960	0.9982	0.9873	0.9843

K-N-F - Kohler-Nordenson-Fox; P-T - Priestley-Taylor; P - Penman; dB-K - deBruim-Keijman; B-S - Brutsaert-Stricker; dB - deBruim; R - Coefficient of correlation; Id - Willmott coefficient of concordance; C - Index of confidence or performance (CAMARGO & SENTELHAS, 1995)

In LEITÃO et al. (2007), P and K-N-F methods had performances classified as “Good” and “Tolerable” in Cariri and Sertão regions, respectively, and they were the methods that had the worst performances in evaporation estimate, when the results were compared to the evaporation observed in standard tank of 20 m².

Although performances are in the same class (“Optimal”), P-T and dB-K methods provided better performance in Banabuiú dam, considering evaporation only in the second semester.

CONCLUSIONS

The methods of Kohler-Nordenson-Fox, Priestley-Taylor, Penman, deBruim-Keijman, Brutsaert-Stricker and deBruim are appropriate to evaporation estimate in Banabuiú dam, during the dry season, once the statistical indexes indicate optimal performance for the two methods to evaporation estimate as a component of water balance.

The methods of Priestley-Taylor and deBruim-Keijman are the most appropriate to use as a component of the water balance in Banabuiú dam, in the state of Ceará, since they have the best statistics of confidence or performance in relation to the other methods tested in this study.

The methodology presented was feasible for determining the components of the water balance in semiarid reservoirs, especially in the dry season, allowing us to simulate the decrease in the level and volume of the reservoir based on data collected from automatic weather stations.

ACKNOWLEDGMENTS

To the Company of Management of Water Resources of the States of Ceará (COGERH); Ceará Foundation for Meteorology and Hydro Resources (Funceme) and the National Department of Works Against Drought (Dnocs), for the promptness in providing the data, and to the Foundation for Support in Scientific and Technological Development of Ceará (FUNCAP) for the support in the form of research grant.

REFERENCES

- ALVES, J.J.A.; ARAÚJO, M.A.; NASCIMENTO, S.S. Degradação da Caatinga: uma investigação ecogeográfica. *Revista Caatinga*, Mossoró, v.22, n.3, p.126-135, 2009.
- ARAÚJO, J.C.; PIEDRA, J.I.G. Comparative hydrology: analysis of a semiarid and a humid tropical watershed. *Hydrological Processes*, Chichester, v.23, n.8, p.1169-1178, 2009.
- ASHRAF, M.; KAHLOWN, M. A.; ASHFAQ, A. Impact of small dams on agriculture and groundwater development: A case study from Pakistan. *Agricultural Water Management*, Amsterdam, n.92, p.90-98, 2007
- BURMAN, L.; POCHOP, L.O. *Evaporation, evapotranspiration and climatic data*. Amsterdam: Elsevier, 1994. 278 p. (Developments in Atmospheric Science, 22).

- CAMPOS, J.N.B. Modeling the Yield-Evaporation-Spill in the Reservoir Storage Process: The Regulation Triangle Diagram. *Water Research Management*, Wageningen, v.24, n.13, p.3487-3511, 2010.
- CAMPOS, J.N.B.; CAMPOS, V.R.; MOTA, F.A. O custo da garantia da água bruta: o caso dos rios intermitentes do Ceará. *Rega*, Porto Alegre, v.6, n.1, p.55-66, 2009.
- CEARÁ. Secretaria dos Recursos Hídricos (SRH). Atlas eletrônico dos recursos hídricos do Ceará. Fortaleza: SRH, 2009. Disponível em <<http://atlas.srh.ce.gov.br/>>. Acesso: 19 nov. 2009.
- GIANNIOU, S.K.; ANTONOPOULOS, V.Z. Evaporation and energy budget in Lake Vegorits, Greece. *Journal of Hydrology*, Amsterdam, v.345, p.212-223, 2007.
- LEÃO, R.A.O.; TSUCHIYA, S.K.; ROCHA NETO, O.C.; TEIXEIRA, A.S.; SOARES, A.A. Estimativa da evaporação no reservatório Pedras Brancas, Estado do Ceará-Brasil e análise de sensibilidade dos métodos de estimativa à variação nos dados climatológicos. In: CONGRESSO NACIONAL DE IRRIGAÇÃO E DRENAGEM, 19., 2009, Montes Claros. *Anais...* Brasília: ABID, 2009. 1 CD-ROM.
- LEITÃO, M.M.V.B.R.; OLIVEIRA, G.M.; LEITÃO, T.J.V. Avaliação do desempenho de diferentes métodos de estimativa da evaporação para duas regiões da Paraíba. *Revista Brasileira de Engenharia Agrícola e Ambiental*, Campina Grande, v.11, n.6, p.585-593, 2007.
- KROL, M.S.; BRONSTERT, A. Regional integrated modelling of climate change impacts on natural resources and resources usage in semi-arid Northeast Brazil. *Environmental Modelling & Software*, Oxford, v.22, p.259-268, 2007.
- MATOS, A.T.; SILVA, D.D.; PRUSKI, F.F. Impactos decorrentes da construção de reservatórios para acumulação de água. *Item*, Brasília, n.56/57, p.60-66, 2003.
- PEREIRA, A.R.; VILLA NOVA, N.A.; SEDIYAMA, G.C. *Evapo(transpi)ração*. Piracicaba: FEALQ, 1997. 183 p.
- PEREIRA, S.B.; PRUSKI, F.F.; SILVA, D.D.; RAMOS, M.M. Evaporação líquida no lago do Sobradinho e impactos no escoamento devido à construção do reservatório. *Revista Brasileira de Engenharia Agrícola e Ambiental*, Campina Grande, v.13, n.3, 2009.
- PRUSKI, F.F.; BRANDÃO, V.S.; SILVA, D.D. *Escoamento superficial*. Viçosa-MG: Editora UFV, 2006. 87 p.
- ROSENBERRY, D.O.; WINTER, T.C.; BUSO, D.C.; LIKENS, G.E. Comparison of 15 evaporation methods applied to a small mountain lake in the northeastern USA. *Journal of Hydrology*, Amsterdam, v.340, p.149-166, 2007.
- TANNY, J.; COHEN, S.; ASSOULINE, S.; LANGE, F.; GRAVA, A.; BERGER, D.; TELTCH, B.; PARLANGE, M.B. Evaporation from a small water reservoir: Direct measurements and estimates. *Journal of Hydrology*, Amsterdam, n.351, p.218-229, 2008.
- TUCCI, C.E.M.; BELTRAME, L.F.S. Evaporação e evapotranspiração. In: TUCCI, C.E.M. (org.) *Hidrologia - Ciência e aplicação*. 3.ed. Porto Alegre: UFRGS/ABRH, 2004. cap. 19.