



Polymorphisms associated with the risk of lung cancer in a healthy Mexican Mestizo population: Application of the additive model for cancer

Rebeca Pérez-Morales^{1,*}, Ignacio Méndez-Ramírez², Clementina Castro-Hernández¹, Ollin C. Martínez-Ramírez¹, María Eugenia Gonsebatt¹ and Julieta Rubio¹

¹*Departamento de Medicina Genómica y Toxicología Ambiental, Instituto de Investigaciones Biomédicas, Universidad Nacional Autónoma de México, Mexico City, México.*

²*Departamento de Probabilidad y Estadística, Instituto de Investigaciones en Matemáticas Aplicadas y en Sistemas, Universidad Nacional Autónoma de México, Mexico City, México.*

Abstract

Lung cancer is the leading cause of cancer mortality in Mexico and worldwide. In the past decade, there has been an increase in the number of lung cancer cases in young people, which suggests an important role for genetic background in the etiology of this disease. In this study, we genetically characterized 16 polymorphisms in 12 low penetrance genes (*AhR*, *CYP1A1*, *CYP2E1*, *EPHX1*, *GSTM1*, *GSTT1*, *GSTP1*, *XRCC1*, *ERCC2*, *MGMT*, *CCND1* and *TP53*) in 382 healthy Mexican Mestizos as the first step in elucidating the genetic structure of this population and identifying high risk individuals. All of the genotypes analyzed were in Hardy-Weinberg equilibrium, but different degrees of linkage were observed for polymorphisms in the *CYP1A1* and *EPHX1* genes. The genetic variability of this population was distributed in six clusters that were defined based on their genetic characteristics. The use of a polygenic model to assess the additive effect of low penetrance risk alleles identified combinations of risk genotypes that could be useful in predicting a predisposition to lung cancer. Estimation of the level of genetic susceptibility showed that the individual calculated risk value (iCRV) ranged from 1 to 16, with a higher iCRV indicating a greater genetic susceptibility to lung cancer.

Key words: additive model, genetic polymorphism, lung cancer, Mexicans, molecular epidemiology.

Received: February 3, 2011; Accepted: July 18, 2011.

Introduction

Lung cancer (LC) is the major cause of mortality from neoplasias worldwide. In Mexico, LC was responsible for 11.45% of deaths by malignant neoplasia from 1998-2002, and a prospective study indicated that mortality from LC will be even greater in the future (Ruíz-Godoy *et al.*, 2007). Lung cancer is a serious public health problem (Proctor, 2001). The World Health Organization (WHO) estimates that in 2030 the number of deaths attributable to the consumption of tobacco will be 100 million, accompanied by an increased incidence of LC (Xie and Minna, 2008).

Lung cancer is highly related to tobacco consumption, although only 20% of smokers develop LC. On other hand, the number of cases among people under 50 years old

has increased (Gemignani *et al.*, 2007), highlighting the importance of genetic background in the etiology of LC. In this context, efforts have been made to identify polymorphisms associated with the risk of developing LC. Association studies have focused mainly on polymorphisms in genes coding for (1) enzymes involved in the bioactivation of carcinogens, such as cytochromes P450 *CYP1A1* (Shah *et al.*, 2008), *CYP2E1* (Zhan *et al.*, 2010) and *CYP2D6* (Shaw *et al.*, 1998), (2) enzymes involved in detoxification, *e.g.*, glutathione transferases *GSTM1*, *GSTT1* and *GSTP1* (Sobti *et al.*, 2008), N-acetyl transferase 2 (*NAT2*) and epoxide hydrolase (*EPHX1*) (Zhou *et al.*, 2002), (3) proteins involved in DNA repair, such as *XRCC1*, *XRCC3*, *ERCC2*, *ERCC4*, *MGMT* and *OGG1* (Zienolddiny *et al.*, 2006; Hung *et al.*, 2007) and (4) proteins implicated in the cell cycle and apoptosis, such as *CCND1*, *CHEK2*, *MDM2*, *TP53* and *EGF* (Hosgood III *et al.*, 2008).

In some populations, a significant association between gene polymorphisms and the risk of LC risk has been established, while in other populations no associations have been found, probably because of the low frequency of polymorphisms. For example, the *CYP1A1* rs1048943

Send correspondence to Julieta Rubio. Departamento de Medicina Genómica y Toxicología Ambiental, Instituto de Investigaciones Biomédicas, Universidad Nacional Autónoma de México, Apartado Postal 70228, 04510 Mexico City, México. E-mail: juruli@unam.mx.
*Present address: Departamento de Biología Molecular, Facultad de Ciencias Químicas, Universidad Juárez del Estado de Durango, Av. Artículo 123 s/n, Col. Filadelfia 35010 Gómez Palacio, Durango, México.

(Ile462Val) polymorphism is associated with a risk of LC in Asian Korean, Chinese and Japanese populations (Lee *et al.*, 2008) and in Chilean (Quinoñes *et al.*, 2001), Mexican (Gallegos-Arreola *et al.*, 2008) and Afro-American (Taioli *et al.*, 1998) populations, whereas this association has not been confirmed in American and European Caucasians, possibly because the frequency of the *CYP1A1* rs1048943 polymorphism in these populations is < 2% (Hung *et al.*, 2003). In contrast, the *GSTM1* deletion polymorphism, which has a frequency of 0.35–0.58 in Asians, European and American Caucasians and Africans (Mohr *et al.*, 2003), is significantly associated with LC in Caucasians (Hung *et al.*, 2003) and Asians (Lee *et al.*, 2008). *ERCC2* rs1799793 (Asp399Asn), *ERCC2* rs13181 (Lys751Asn) and *MGMT* rs12917 (Leu84Phe) polymorphisms show no consistent association with LC in different populations (Kiyohara and Yoshimasu, 2007). However, *XRCC1* rs3213245 (-77 T > C) was associated with a risk of LC in three case-control studies and *ERCC2* rs13181 was associated with a risk of LC in a meta-analysis study of 18 case-control reports (Vineis *et al.*, 2009).

Since these polymorphisms modify the functionality of the encoded proteins it has been suggested that polymorphic variants may alter the metabolic and detoxification pathways of carcinogenic compounds, thereby predisposing the individual bearing these polymorphisms to develop cancer (Nebert and Dalton, 2006). Indeed, polymorphisms in specific genes can modulate the formation of DNA-carcinogen adducts (Ketelslegers *et al.*, 2006) which favors the generation of mutations leading to LC, particularly in smokers (Lodovici *et al.*, 2004).

Recently, a polygenic cancer model was proposed that considers the genetic susceptibility to cancer as a global mechanism, with the susceptibility being defined by low risk alleles in multiple candidate genes (Pharoah *et al.*, 2002; Dong *et al.*, 2008). Susceptibility to LC may be caused by low penetrance genes (low risk) with high frequencies in the general population (Kiyohara *et al.*, 2007). In this context, susceptibility to LC is determined by a combination of multiple low risk alleles in an individual, with each allele contributing only slightly to the overall cancer risk, as proposed by Fletcher and Houlston (2010) in their polygenic additive model. This model, which allows the identification of high risk individuals, may be useful in preventing LC in the early stages, thereby significantly reducing LC-related mortality and the costs associated with the diagnosis and treatment of this disease.

The first step in any study of molecular epidemiology in which ethnicity plays an important role is the characterization of the general healthy population since this will provide the benchmark for further analysis. In this study, we investigated 16 polymorphisms in 12 low penetrance genes in a healthy Mexican Mestizo population. These genes code for proteins involved in the metabolic pathways of some environmental and tobacco smoke carcinogens, with their

polymorphisms reportedly producing functional alterations that are associated with the risk of developing LC. The association between these polymorphisms and the risk of cancer was assessed using the polygenic additive model for cancer.

Materials and Methods

Subjects

The research protocol was approved by the Committee of Bioethics of the Instituto de Investigaciones Biomédicas of the Universidad Nacional Autónoma de México, and the Hospital “20 de Noviembre” ISSSTE gave permission to use the buffy coat of blood bank samples as a source of DNA. The study included 382 unrelated, healthy Mexican Mestizo individuals whose parents and grandparents were born in Mexico. After providing informed consent, the subjects answered a questionnaire that included information on their age, gender, smoking status and lifestyle.

Polymorphism analysis

Genomic DNA was obtained from blood samples by phenol-chloroform extraction and ethanol precipitation (Sambrook *et al.*, 1987). The presence of the *AhR* rs2066853 (Arg554Lys) polymorphism was determined by using the TaqMan probe C_11170747_20 from Applied Biosystems, according to the manufacturer’s recommendations. Restriction fragment length polymorphism (RFLP) analysis was used to assess the following polymorphisms: *CYP1A1* rs4646903 (6235T > C) and *CYP1A1* rs1800031 (5639T > C) (Kawajiri, 1999), *CYP1A1* rs1048943 (Ile462Val) and *CYP1A1* rs1799814 (Thr461Asn) (Cascorbi *et al.*, 1996), *CYP2E1* rs2031920 (-1053C > T) (Morita *et al.*, 1997), *EPHX1* rs1051740 (Tyr113His) and *EPHX1* rs2234922 (His139Arg) (Smith and Harrison, 1997), *GSTP1* rs947894 (Ile105Val) (Harries *et al.*, 1997), *XRCC1* rs25487 (Arg399Gln) (Abdel-Rahman and El-Zein, 2000), *ERCC2* rs13181 (Lys751Gln) (Lunn *et al.*, 2000), *MGMT* rs12917 (Leu84Phe) (Courtney *et al.*, 2005), *CCND1* rs603965 (870G > A) (Wang *et al.*, 2002), and *TP53* rs1042522 (Arg72Pro) (Irrarázabal *et al.*, 2003). Polymorphisms of *GSTT1* null and *GSTM1* null were determined by multiplex PCR using a previously reported protocol (Abdel-Rahman *et al.*, 1996).

Statistical analyses

The statistical package GenePop version 4.0.10 (<http://genepop.curtin.edu.au>) was used to assess whether the genotypes of each gene were in Hardy-Weinberg equilibrium and to determine the degree of linkage between the *EPHX1* and *CYP1A1* gene polymorphisms. Conglomerate and hierarchical clustering analyses were used to determine the genetic variability of the sample. The estimated cancer risk and the genotypic and allelic frequencies were determined using the statistical package JMP version 8.

Results

Of the 382 Mexican Mestizo individuals studied, 29% were women and 71% were men. The age range was between 18 and 80 years (mean age: 39.2 ± 12.1 for men and 41.5 ± 13.1 for women) and 48% of the population were smokers.

The following polymorphisms were studied in candidate genes: *Ahr* rs2066853, *CYP1A1* rs4646903, *CYP1A1* rs1048943, *CYP1A1* rs1800031, *CYP1A1* rs1799814, *CYP2E1* rs2031920, *EPHX1* rs1051740, *EPHX1* rs2234922, *GSTM1* null, *GSTT1* null, *GSTP1* rs947894, *XRCC1* rs25487, *ERCC2* rs13181, *MGMT* rs12917, *CCND1* rs603965 and *TP53* rs1042522. The genotypic and allelic frequencies of these polymorphisms are shown in Table 1. All genotypes were in Hardy-Weinberg equilibrium. *GSTM1* and *GSTT1* were not analyzed for Hardy-Weinberg equilibrium because the methodology did not allow discrimination between heterozygous and homozygous positive genotypes.

Polymorphisms in the same gene may have synergistic or antagonistic effects, as in the case of *CYP1A1* and epoxide hydrolase 1. This is functionally significant because *CYP1A1* acts in association with *EPHX1* to convert polyaromatic hydrocarbons to highly toxic, mutagenic and carcinogenic epoxides.

Linkage analysis of four *CYP1A1* and two *EPHX1* polymorphisms showed that the *CYP1A1* rs1799814 and *CYP1A1* rs1800031 genotypes were linked in all cases,

with a probability of 1 ($p < 0.001$), whereas *CYP1A1* rs4646903 and *CYP1A1* rs1048943 polymorphisms were not linked, with a probability of 0 ($p < 0.001$). *EPHX1* rs1051740 and *EPHX1* rs2234922 were linked, with a probability of 0.03254 ($p = 0.0025$). Combinations of *CYP1A1* polymorphisms are shown in Table 2.

Conglomerate analysis was used to determine the genetic variability and the possible grouping of the individuals analyzed. We identified six groups that clustered according to their genetic characteristics, although there was considerable heterogeneity (Figure 1). Additionally, hierarchical cluster analysis of the genotypes showed that *CYP1A1* rs1800031 and *CYP1A1* rs1799814 polymorphisms clustered together, whereas *CYP1A1* rs4646903 and *CYP1A1* rs1048943 were close to each other but clustered separately (Figure 2). The *EPHX1* rs1051740 and *EPHX1* rs2234922 polymorphisms were widely separated, as also indicated by linkage analysis.

To determine the theoretical levels of susceptibility to LC, a risk matrix was generated using a log-additive model in which a value of 0 was assigned to homozygous genotypes that produced no risk, 1 to heterozygous genotypes (medium risk) and 2 to homozygous genotypes that produced changes in the activity of the protein, considered to be high risk. The individual calculated risk values (iCRVs) were determined by adding the values of the log-additive model to each locus. The iCRVs ranged from 1 to 16, although there was a marked decrease in individuals with $iCRV \leq 5$ and ≥ 12 (Figure 3).

Table 1 - Frequency of lung cancer risk polymorphisms among healthy Mexican Mestizos.

Gene (rs)	Genotype frequency, n (%)					Allelic frequency	
	Mutant allele	n	Wild type homozygous	Heterozygous	Mutant homozygous	p ^b	q ^c
<i>Ahr</i> (2066853)	Lys	370	260 (70.2)	107 (29)	3 (0.8)	0.85	0.15
<i>CYP1A1</i> (4646903)	C	382	97 (25.4)	193 (50.5)	92 (24.1)	0.51	0.49
<i>CYP1A1</i> (1048943)	Val	382	86 (22.5)	176 (46.1)	120 (31.4)	0.45	0.55
<i>CYP1A1</i> (1800031)	C	382	378 (99)	4 (1)	0	0.994	0.006
<i>CYP1A1</i> (1799814)	Asn	382	339 (88.7)	39 (10.3)	4 (1)	0.946	0.054
<i>CYP2E1</i> (2031920)	T	382	272 (71.2)	102 (26.7)	8 (2.1)	0.85	0.15
<i>EPHX1</i> (1051740)	His	382	121 (31.7)	133 (34.8)	128 (33.5)	0.49	0.51
<i>EPHX1</i> (2234922)	Arg	382	323 (84.6)	55 (14.4)	4 (1)	0.92	0.08
<i>GSTP1</i> (947894)	Val	382	102 (26.7)	192 (50.3)	88 (23)	0.52	0.48
<i>GSTM1</i> (deletion)	Null	382	239 (62.6)	ND ^a	143 (37.4)	0.63	0.37
<i>GSTT1</i> (deletion)	Null	382	324 (84.8)	ND ^a	58 (15.2)	0.85	0.15
<i>XRCC1</i> (25487)	Gln	382	211 (55.2)	147 (38.5)	24 (6.3)	0.75	0.25
<i>ERCC2</i> (13181)	Gln	382	258 (67.5)	98 (25.7)	26 (6.8)	0.8	0.2
<i>MGMT</i> (12917)	Phe	382	205 (53.7)	125 (32.7)	52 (13.6)	0.7	0.3
<i>CCND1</i> (603965)	A	382	162 (42.4)	156 (40.8)	64 (16.8)	0.63	0.37
<i>TP53</i> (1042522)	Pro	382	163 (42.7)	159 (41.6)	60 (15.7)	0.64	0.36

^aNot determined. ^bp – wild type allele. ^cq – mutant allele.

Table 2 - Linkage analysis of the *CYP1A1* and *EPHX1* loci.

Gene	Locus 1 genotype	Locus 2 genotype	Linkage probability	p	Switches
<i>CYP1A1</i>	rs1048943 Val/Val	rs4646903 C/C	0	< 0.001	86515
	rs1048943 Val/Val	rs1800031 C/C	0.269010	0.003075	53643
	rs1048943 Val/Val	rs1799814 Asn/Asn	0.236880	0.006550	62708
	rs1800031 C/C	rs4646903 C/C	0.811290	0.001748	53666
	rs1799814 Asn/Asn	rs4646903 C/C	0.196950	0.005966	62546
	rs1799814 Asn/Asn	rs1800031 C/C	1	< 0.001	14571
<i>EPHX1</i>	rs1051740 His/His	rs2234922 Arg/Arg	0.03254	0.002541	64999

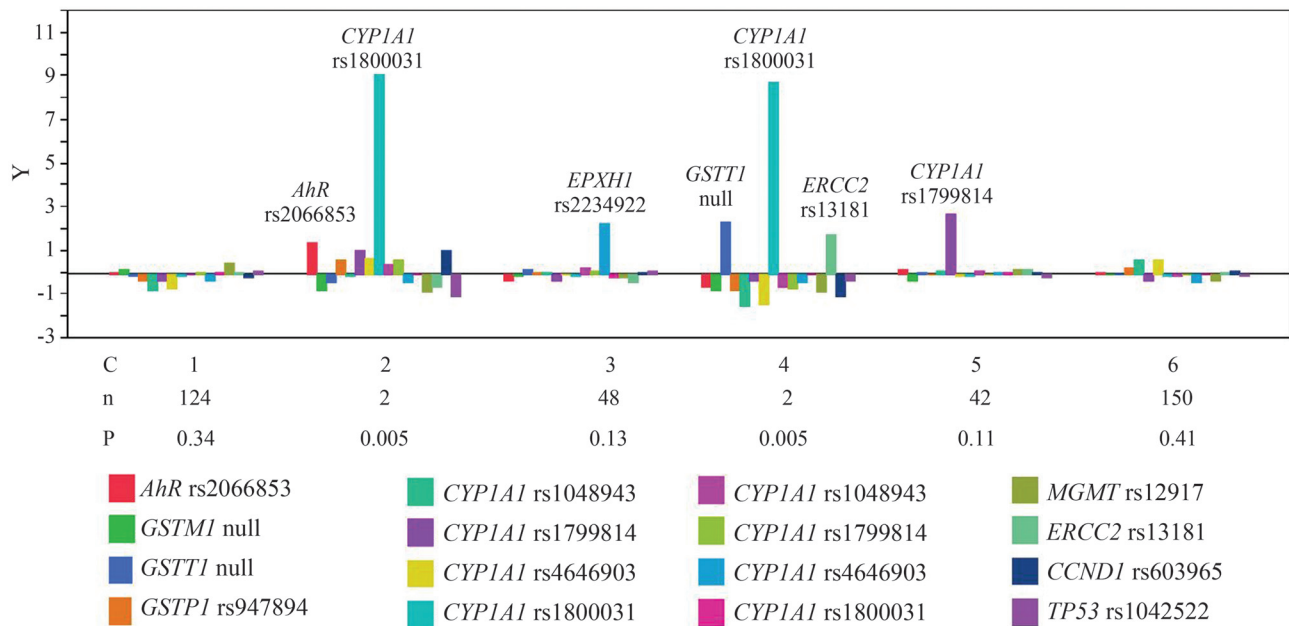


Figure 1 - Conglomerate analysis showing the genetic heterogeneity of the population studied in this work. C – cluster number, n – number of individuals per cluster and P – the probability of each cluster. Only under-represented genotypes are shown.

Discussion

Cancer is a polygenic disease, the risk of which may be related to the presence of low-penetrance genes that have additive effects. In this study, we examined the frequency of some polymorphisms possibly related to the risk of developing lung cancer in a sample of healthy Mexican Mestizos. These polymorphisms may be useful biomarkers of genetic susceptibility to lung cancer in specific populations.

We have previously reported on the high frequency of the *CYP1A1* rs1048943 polymorphism in Mexican Mestizos (Pérez-Morales *et al.*, 2008), a polymorphism that is highly represented in Amerindians (Kvitko *et al.*, 2000). In

some populations, the *CYP1A1* rs1048943 polymorphism has been associated with a risk of LC (Quinoñes *et al.*, 2001; Lee *et al.*, 2008; Shah *et al.*, 2008), although not all studies have found such an association, especially when the frequency of this polymorphism is very low, as in European and American Caucasian populations (Hung *et al.*, 2003). However, in some populations the *CYP1A1* rs1048943 polymorphism has a significant influence on the risk of developing LC because of the additive effect of other polymorphisms.

Although the *CYP1A1* rs1799814 and *CYP1A1* rs1800031 genotypes were found to be linked, the linkage analysis may have been affected by the high frequencies of

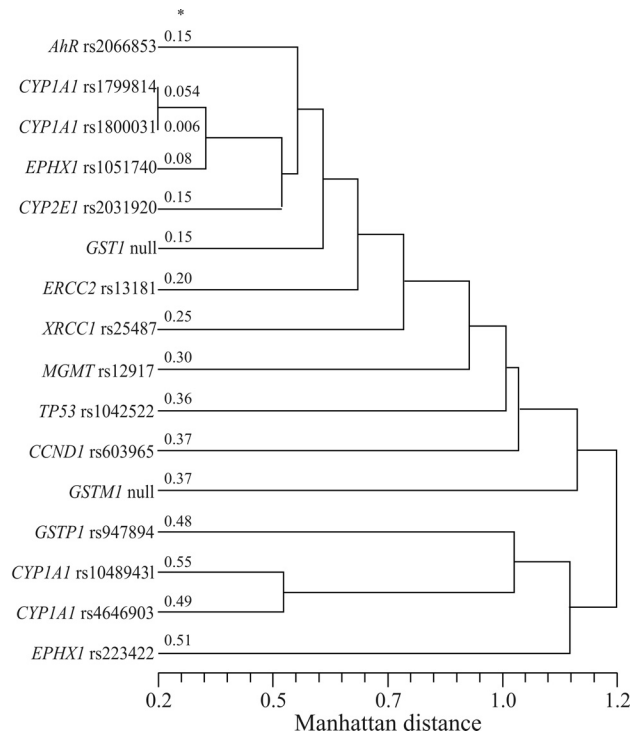


Figure 2 - Hierarchical cluster analysis of the different genotypes based on the genetic characteristics of healthy Mexican Mestizos. $r = 0.94939$. *Allelic frequencies of the polymorphic genotypes.

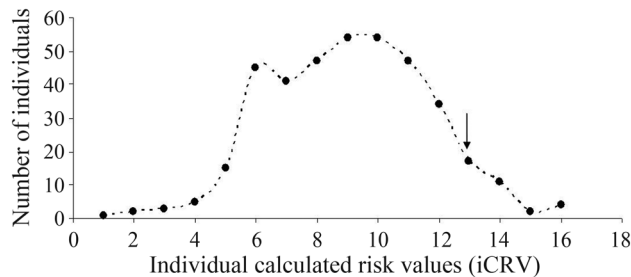


Figure 3 - Estimated risk of lung cancer in a healthy Mexican Mestizo population. The arrow indicates the 85th percentile.

the wild type allele at these loci in our population. On the other hand, in contrast to a previous report (Hayashi *et al.*, 1991), the *CYP1A1* rs4646903 and *CYP1A1* rs1048943 polymorphisms were not linked. This observation is functionally significant because the *CYP1A1* rs1048943 polymorphism increases the activity of cytochrome CYP1A1, resulting in a more efficient generation of reactive metabolites, whereas the *CYP1A1* rs4646903 polymorphism increases the levels of CYP1A1 mRNA. Hence, the combination of these alleles could increase the risk of LC (Yoon *et al.*, 2008). Some studies have associated *CYP1A1* rs1799814 polymorphism with a risk of LC (Gallegos-Arreola *et al.*, 2008), whereas *CYP1A1* rs1800031 is reportedly specific for African populations but is not associated with a risk of LC (Taioli *et al.*, 1998).

The proportion of the population carrying both the *EPHX1* rs1051740 and *EPHX1* rs2234922 alleles was very small. In these individuals, the allele *EPHX1* rs1051740 Tyr113 apparently offered no protection against LC, in contrast to previous observations (Voho *et al.*, 2006). On the other hand, the *EPHX1* rs2234922 139Arg variant increases the activity of the encoded enzyme (Hassett *et al.*, 1994), which could suppress the low activity of the *EPHX1* 113His variant (Salam *et al.*, 2007). For example, an individual with the *CYP1A1* rs4646903, *CYP1A1* rs1048943, *EPHX1* rs1051740 and *EPHX1* rs2234922 polymorphisms will produce reactive metabolites more efficiently and consequently have a higher risk of developing LC.

A conglomerate analysis of the genetic variability of the population studied here revealed six groups that clustered according to their genetic characteristics (Figure 1). In clusters 2 and 4, the polymorphism *CYP1A1* rs1800031 was quite separate from the rest of the genotypes, although it should be noted that these two groups consisted of only two subjects each such that the probability of finding individuals belonging to these clusters in a given population is very low. In clusters 2, 3, 4 and 5, *AhR* rs2066853, *EPHX1* rs2234922, *GSTM1* null, *ERCC2* rs13181, and *CYP1A1* rs1799814 were over-represented with respect to the other polymorphisms analyzed, but the number of individuals was smaller than in clusters 1 and 6; there was no predominant genotype in the latter two clusters because of the combination of polymorphic alleles at each locus in each individual. Despite this clustering, our findings indicate that the population studied was highly heterogeneous, as is characteristic of Mexican Mestizos.

Hierarchical cluster analysis showed that the genes were grouped according to their frequency. This analysis also revealed that *CYP1A1* rs1800031 and *CYP1A1* rs1799814 occurred together, in agreement with the linkage analysis, whereas *CYP1A1* rs4646903 and *CYP1A1* rs1048943 were found together in some individuals but were not linked (as indicated by the separation of their branches). Overall, this analysis showed that a portion of the population carried both risk alleles, although they were not linked. However, we have not determined whether these polymorphisms are in a *cis* or *trans* position, which could affect the linkage results.

Our analysis revealed individuals with a high susceptibility to LC based on the presence of risk genotypes, although different combinations of risk genotypes may confer varying degrees of susceptibility when combined with other components, such as environmental factors.

If the risk of developing LC is attributed to the interaction of several low-penetrance genes that exert an additive effect then we should be able to detect individuals with a high number of risk alleles and a greater genetic susceptibility to LC. We estimated the levels of susceptibility and found that the iCRV ranged from 1 to 16; there was a marked decrease in the susceptibility to LC among individ-

uals with an iCRV ≥ 12 . Application of the polygenic model (Fletcher and Houlston, 2010) (Figure 3) yielded a normal distribution of risk alleles in which low and high risk individuals occurred at the extremes of the distribution. Theoretically, high-risk individuals should be more susceptible to LC, but one cannot exclude the important role of genotype x environmental interactions to which individuals are exposed.

Based on the polygenic model of cancer, which takes into consideration the additive effect of multiple risk alleles, the high risk genotypes identified in this study included genes involved in phase I and II metabolism, DNA repair, oxidative stress and cell cycle regulation. All of these gene groups need to be considered when analyzing the efficiency of reactive metabolite generation, DNA-adduct repair, damage persistence and the cellular response to cycle arrest or apoptosis. However, as shown here, only a small minority of individuals actually possess a large number of risk alleles. Although studies of other populations have associated specific polymorphisms with a risk of LC, these relationships have not always been confirmed, possibly because of the pleiotropic or epistatic effects of one genotype on another within the same population.

Since LC is a multifactorial, polygenic disease, it is incorrect to attribute the susceptibility to LC to a single gene or group of related genes. In this context, determining the genetic background of a healthy population, such as done here for a Mexican Mestizo population, can provide a sound basis for subsequent studies on the association between these risk genotypes and LC. In such cases, the iCRV should be higher in patients than in the healthy controls.

Acknowledgments

This study was supported by a grant (PAPIIT-IN219807) from the Universidad Nacional Autónoma de México to J.R. and a post-graduate scholarship (no. 204279) from the Consejo Nacional de Ciencia y Tecnología to R.P. We thank Dr. Sergio García Méndez, head of the Blood Bank, Hospital “20 de Noviembre” ISSSTE in Mexico City, for providing the samples, and Dr. Pavel Petrosyan for critical reading of the manuscript.

References

- Abdel-Rahman S and El-Zein R (2000) The 399Gln polymorphism in the DNA repair gene *XRCC1* modulates the genotoxic response induced in human lymphocytes by the tobacco-specific nitrosamine NNK. *Cancer Lett* 159:63-71.
- Abdel-Rahman S, El-Zein R, Anwar W and Au W (1996) A multiplex PCR procedure for polymorphic analysis of *GSTM1* and *GSTT1* genes in population studies. *Cancer Lett* 107:229-233.
- Cascorbi I, Brockmüller J and Roots I (1996) A C4887A polymorphism in exon 7 of human *CYP1A1*: Population frequency, mutation linkages, and impact on lung cancer susceptibility. *Cancer Res* 56:4965-4969.
- Courtney E, Wickliffe J, Wolfe K, Kinslow C, Lopez M and Abdel-Rahman S (2005) The L84F and the I143V polymorphism in the O⁶-methylguanine-DNA-methyltransferase (*MGMT*) gene increase human sensitivity to the genotoxic effects of the tobacco-specific nitrosamine carcinogen NNK. *Pharmacogenet Genomics* 15:571-578.
- Dong L, Potter J, White E, Ulrich C, Cardon L and Peters U (2008) Genetic susceptibility to cancer: The role of polymorphism in candidate genes. *JAMA* 299:2423-2434.
- Fletcher O and Houlston R (2010) Architecture of inherited susceptibility to common cancer. *Nat Rev Cancer* 10:353-361.
- Gallegos-Arreola M, Figuera-Villanueva L, Troyo-Sanroman R, Morgan-Villela G, Puebla-Pérez AM, Flores Márquez MR and Zúñiga-González GM (2008) *CYP1A1**2B and *4 polymorphism are associated with lung cancer susceptibility in Mexican patients. *Int J Biol Markers* 23:1-7.
- Gemignani F, Landi S, Szeszenia-Dabrowska N, Zaridze D, Lissowska J, Rudnai P, Fabianova E, Mates D, Foretova L, Janout V, *et al.* (2007) Development of lung cancer before the age of 50: The role of xenobiotic metabolizing genes. *Carcinogenesis* 28:1287-1293.
- Harries L, Stubbins M, Forman D, Howard G and Wolf R (1997) Identification of genetic polymorphism at the glutathione S-transferase Pi locus and association with susceptibility to bladder, testicular and prostate cancer. *Carcinogenesis* 18:641-644.
- Hassett C, Aicher L, Sidhu J and Omiecinski C (1994) Human microsomal epoxide hydrolase: Genetic polymorphism and functional expression *in vitro* of amino acid variants. *Hum Mol Genet* 3:421-428.
- Hayashi S, Watanabe J, Nakachi K and Kawajiri K (1991) Genetic linkage of lung cancer-associated *MspI* polymorphism with amino acid replacement in the heme binding region of the human cytochrome P450IA1. *J Biochem* 110:407-411.
- Hosgood III H, Menashe I, Shen M, Yeager M, Yuenger J, Rajaraman P, He X, Chatterjee N, Caporasso N, Zhu Y, *et al.* (2008) Pathway-based evaluation of 380 candidate genes and lung cancer susceptibility suggests the importance of the cell cycle pathway. *Carcinogenesis* 29:1938-1943.
- Hung R, Boffeta P, Brockmüller J, Haugen A, Butkiewicz D, Cascorbi I, Clapper M, Garte S, Hirvonen A, Anttila S, *et al.* (2003) *CYP1A1* and *GSTM1* genetic polymorphism and lung cancer risk in Caucasian non-smokers: A pooled analysis. *Carcinogenesis* 24:875-882.
- Hung R, Baragatti M, Thomas D, McKay J, Szeszenia-Dabrowska N, Zaridze D, Lissowska J, Rudnai P, Fabianova E, Mates D, *et al.* (2007) Inherited predisposition of lung cancer: A hierarchical modeling approach to DNA repair and cell cycle control pathways. *Cancer Epidemiol Biomarkers Prev* 16:2736-2744.
- Irrarázabal C, Rojas C, Aracena R, Márquez C and Gil L (2003) Chilean pilot study on the risk of lung cancer associated with codon 72 polymorphism in the gene of protein p53. *Toxicol Lett* 144:69-76.
- Kawajiri K (1999) Metabolic polymorphism and susceptibility to cancer. Chapter 15 *CYP1A1*. *IARC Sci Publ* 148:159-172.
- Ketelslegers H, Gottschalk R, Godschalk R, Knaapen AD, Schoten F, Vlietnick F, Kleinjans J and Van Delft J (2006) Interindividual variations in DNA adduct levels assessed by analysis of multiple genetic polymorphism in smokers. *Cancer Epidemiol Biomarkers Prev* 15:624-629.

- Kiyohara C and Yoshimasu K (2007) Genetic polymorphisms in the nucleotide excision repair pathway and lung cancer risk: A meta-analysis. *Int J Med Sci* 4:59-71.
- Kiyohara C, Yoshimasu K, Takayama K and Nakanishi Y (2007) Lung cancer susceptibility: Are we on our way to identifying a high-risk group? *Future Oncol* 3:617-627.
- Kvitko K, Nunes J, Weimer T, Salzano F and Hutz M (2000) Cytochrome *P450IA1* polymorphism in South American Indians. *Hum Biol* 72:1039-1043.
- Lee K, Kang D, Clapper M, Ingelman-Sundberg M, Ono-Kihara M, Kiyohara C, Min S, Lan Q, Le Marchand L, Lin P, *et al.* (2008) *CYP1A1*, *GSTM1*, and *GSTT1* polymorphisms, smoking, and lung cancer risk in a pooled analysis among Asian populations. *Cancer Epidemiol Biomarkers Prev* 17:1120-1126.
- Lodovici M, Luceri C, Guglielmi F, Bacci C, Akpan V, Fonnesu M, Boddi V and Dolara P (2004) Benzo(a)pyrene diolepoxide (BPDE)-DNA adduct levels in leukocytes of smokers in relation to polymorphism of *CYP1A1*, *GSTM1*, *GSTP1*, *GSTT1* and *mEH*. *Cancer Epidemiol Biomarkers Prev* 13:1342-1348.
- Lunn RM, Helzlsouer KJ, Parshad R, Umbach DM, Harris EL, Sanford KK and Bell DA (2000) XPD polymorphism: Effects on DNA repair proficiency. *Carcinogenesis* 21:551-555.
- Mohr L, Rodgers K and Silvestri G (2003) Glutathione S-transferase M1 polymorphism and the risk of lung cancer. *Anti-cancer Res* 23:2111-2124.
- Morita S, Yano M, Shiozaki H, Tsujinaka T, Ebisui C, Morimoto T, Kishibuti M, Fujita J, Ogawa A and Taniguchi M (1997) *CYP1A1*, *CYP2E1* and *GSTM1* polymorphism are not associated with susceptibility to squamous-cell carcinoma of the esophagus. *Int J Cancer* 71:192-195.
- Nebert D and Dalton T (2006) The role of cytochrome P450 enzymes in endogenous signalling pathways and environmental carcinogenesis. *Nat Rev Cancer* 6:947-960.
- Pérez-Morales R, Castro-Hernández C, Gonsebatt M and Rubio J (2008) Polymorphism of *CYP1A1*2C*, *GSTM1*0*, and *GSTT1*0* in a Mexican Mestizo population: A similitude analysis. *Hum Biol* 80:457-465.
- Pharoah P, Antoniou A, Bobrow M, Zimmern R, Easton D and Ponder B (2002) Polygenic susceptibility to breast cancer and implications for prevention. *Nat Genet* 31:33-36.
- Proctor R (2001) Tobacco and the global lung cancer epidemic. *Nat Rev Cancer* 1:82-86.
- Quinoñes L, Lucas D, Godoy J, Cáceres D, Berthou F, Varela N, Lee K, Acevedo C, Martínez L, Aguilera A, *et al.* (2001) *CYP1A1*, *CYP2E1* and *GSTM1* genetic polymorphisms. The effect of single and combined genotypes on lung cancer susceptibility in Chilean people. *Cancer Lett* 174:35-44.
- Ruiz-Godoy L, Rizo P, Sánchez F, Osornio-Vargas A, García-Cuellar C and Meneses A. Mortality due to lung in Mexico. *Lung Cancer* 58:184-190.
- Salam M, Lin P, Avol E, Gauderman J and Gilliland F (2007) Microsomal epoxide hydrolase, glutathione S-transferase P1, traffic and childhood asthma. *Thorax* 62:1050-1057.
- Sambrook J, Fritsch EF and Maniatis T (1987) *Molecular Cloning. A Laboratory Manual*. 2nd edition. Cold Spring Harbor Press, Cold Spring Harbor, N.Y..
- Shah P, Singh A, Singh M, Mathur N, Pant M, Mishra B and Parmar D (2008) Interaction of cytochrome *P450IA1* genotypes with other risk factors and susceptibility to lung cancer. *Mutat Res* 639:1-10.
- Shaw G, Falk R, Frame J, Weiffenbach B, Nesbitt J, Pass H, Caporaso N, Moir D and Tucker M (1998) Genetic polymorphism of *CYPD6* and lung cancer risk. *Cancer Epidemiol Biomarkers Prev* 7:215-219.
- Smith C and Harrison D (1997) Association between polymorphism in gene for microsomal epoxide hydrolase and susceptibility to emphysema. *Lancet* 350:630-633.
- Sobti R, Kaur P, Kaur S, Janmeja A, Jindal S, Kishan J and Raimondi S (2008) Combined effect of *GSTM1*, *GSTT1*, and *GSTP1* polymorphism on histological subtypes of lung cancer. *Biomarkers* 13:282-295.
- Taioli E, Ford J, Trachman J, Li Y, Demopoulos R and Garte S (1998) Lung cancer risk and *CYP1A1* genotype in African Americans. *Carcinogenesis* 19:813-817.
- Vineis P, Manuguerra M, Kavvoura F, Guarrera S, Allione A, Rosa F, Di Gregorio A, Polidoro S, Saletta F, Ioannidis J, *et al.* (2009) A field synopsis on low-penetrance variants in DNA repair genes and cancer susceptibility. *J Natl Cancer Inst* 101:24-36.
- Voho A, Metsola K, Anttila S, Impivaara O, Järvisalo J, Vainio H, Husgafvel-Pursiainen K and Hirvonen A (2006) *EPHX1* gene polymorphism and individual susceptibility to lung cancer. *Cancer Lett* 237:102-108.
- Wang L, Habuchi T, Takahashi T, Mitsumori K, Kamamoto T, Kakei Y, Kakinuma H, Sato K, Nakamura A, Ogawa O, *et al.* (2002) *Cyclin D1* gene polymorphism is associated with an increased risk of urinary bladder cancer. *Carcinogenesis* 23:257-264.
- Xie Y and Minna J (2008) Predicting the future for people with lung cancer. *Nat Med* 14:812-813.
- Yoon K, Kim J, Gil H, Hwang H, Hwangbo B and Lee J (2008) *CYP1B1*, *CYP1A1*, *MPO*, and *GSTP1* polymorphism and lung cancer in never-smoking Korean women. *Lung Cancer* 60:40-46.
- Zhan P, Wang J, Zhang Y, Qiu L, Zhao S, Qian Q, Wei S, Yu L and Song Y (2010) *CYP2E1 Rsa I/Pst I* polymorphism is associated with lung cancer risk among Asians. *Lung Cancer* 69:19-25.
- Zhou W, Liu G, Thurston S, Xu L, Miller D, Wain J, Lynch T, Su L and Christiani DC (2002) Genetic polymorphism in N-acetyltransferase-2 and microsomal epoxide hydrolase, cumulative cigarette smoking, and lung cancer. *Cancer Epidemiol Biomarkers Prev* 11:15-21.
- Zienolddiny S, Campa D, Lind H, Ryberg D, Skaug V, Stangeland L, Phillips DH, Canzian F and Haugen A (2006) Polymorphism of DNA repair genes and risk of non-small cell lung cancer. *Carcinogenesis* 27:560-567.

Internet Resources

GenePop statistical package, <http://genepop.curtin.edu.au> (October 5, 2010).

Associate Editor: Emmanuel Dias Neto

License information: This is an open-access article distributed under the terms of the Creative Commons Attribution License, which permits unrestricted use, distribution, and reproduction in any medium, provided the original work is properly cited.