

Hearing Outcome of Low-tone Compared to High-tone Sudden Sensorineural Hearing Loss

George Psillas¹ Aikaterini Rizou¹ Dimitrios Rachovitsas¹ Gabriel Tsiropoulos¹ Jiannis Constantinidis¹

¹ 1st Academic ENT Department, Aristotle University of Thessaloniki, AHEPA Hospital, Thessaloniki, Greece

Address for correspondence Dr George Psillas, MD, 1st Academic ENT Department, Aristotle University of Thessaloniki, AHEPA Hospital, 1, Stilponos Kyriakidi St., GR 546 36 Thessaloniki, Greece (e-mail: psill@otenet.gr).

Int Arch Otorhinolaryngol 2019;23:65–69.

Abstract

Introduction Low-tone sudden sensorineural hearing loss (SSHL) is a well-recognized disease, in which the hearing loss is restricted to low frequencies. In contrast to low-tone SSHL, high-tone SSHL is characterized by high-frequency (4,000, 8,000 Hz) hearing loss and preservation of low-, middle-frequency hearing.

Objective The objective of this study is to compare the hearing recovery and long-term outcome of low-tone SSHL with those of patients affected by high-tone SSHL in a follow-up of ~ 3 years.

Methods The low-tone SSHL and high-tone SSHL groups included 27 and 20 patients, respectively; the patients of both groups were treated with intravenous steroids. Predictive factors (gender, affected side, delay of treatment, follow-up time) were also examined.

Results Overall, complete hearing recovery was observed in 77.7% of the patients in the low-tone SSHL group and in 15% of the patients in the high-tone SSHL group. In the high-tone SSHL group, a higher proportion of patients reported tinnitus compared with the low-tone SSHL group (13 cases [65%] versus 3 cases [11%]); however, recurrences were more common in the low-tone SSHL (22%, 6 patients) compared with the high-tone SSHL (2 cases [10%]) group. No predictive factor was found to statistically impact on hearing outcome.

Conclusion After initial therapy, the low-tone SSHL patients have more favorable hearing outcome than high-tone SSHL patients. However, recurrences occurred more frequently in the low-tone SSHL group, while the high-tone SSHL group was more often accompanied by residual symptoms, such as tinnitus.

Keywords

- ▶ sudden hearing loss
- ▶ low tone
- ▶ prognosis

Introduction

Low-tone sudden sensorineural hearing loss (SSHL) is an already known clinical entity, presenting with low-frequency hearing loss and preservation of high-tone hearing, without vertigo.¹ Abe² described SSHL as an independent disease after studying 39 patients in 1982. Since then, low-tone SSHL was often discussed in Japan and Korea, but less documented in the European or North American studies. The incidence of low-tone SSHL is estimated to be ~ 40 to 60/100,000 based on Japanese regional surveys.³

On the other hand, high-tone SSHL has not been extensively studied so far, which is characterized by elevation of the thresholds in the high-frequency range and preservation of low-, middle-frequency hearing. In this study, we retrospectively reviewed the records of patients with the diagnosis of low-tone SSHL and compared their hearing thresholds outcome, hearing recovery and long-term symptoms with those of patients affected by high-tone SSHL. Predictive factors affecting the hearing outcome in a follow-up of ~ 3 years after treatment were also examined.

received
December 8, 2017
accepted after revision
April 15, 2018
published online
June 19, 2018

DOI <https://doi.org/10.1055/s-0038-1657789>.
ISSN 1809-9777.

Copyright © 2019 by Thieme Revinter Publicações Ltda, Rio de Janeiro, Brazil

License terms



Methods

The study sample consisted of 47 patients divided in 2 groups, the low-tone SSHL group (27 patients, 10 males, 17 females), and the high-tone SSHL group (20 patients, 8 males, 12 females). The patient characteristics of the two groups are summarized in ►Table 1. Retrocochlear disease, otologic surgery, acoustic trauma (or barotrauma), acute or chronic otitis media and Ménière disease were excluded from this study.

Low-tone type SSHL was defined as the hearing loss for which the average from 3 low frequencies (125, 250, and 500 Hz) was ≥ 30 dB, and the average from 3 high frequencies (2,000, 4,000 and 8,000 Hz) was ≤ 20 dB.⁴ High-tone SSHL was always associated with a sensation of loss of auditory acuity, tinnitus or ear fullness and was characterized by at least a 15-dB difference in hearing level at high frequencies (4,000 and/or 8,000 Hz) in comparison with that of the healthy side; moreover, hearing thresholds at other frequencies were within the normal limits on the affected side.

All the patients were treated in our clinic with intravenous steroids (dexamethasone, 8mg, 3 times daily and tapered every 3 days over 10 days). After discharge, the patients of the low-tone SSHL group were followed for a mean of 3.3 years (standard deviation [SD]: 2.9 years), and those of the high-tone SSHL group for a mean of 2.8 years (SD:1.6 years).

The age, gender, affected side, delay of treatment and follow-up period were also statistically studied in relation to the hearing recovery in the two groups. To better study the effect of the time gap between the onset of sudden hearing loss and treatment, each group was divided into 2 subgroups, the early and the late; the early subgroup started the treatment within 2 days of SSHL onset, and the late subgroup, in which the treatment was delayed for more than 2 days of SSHL onset.

At the last follow-up, the final outcome in each group was recorded as follows: complete recovery: final hearing level within 0 to 20 dB, or the average gain was 10 dB or less between 2 ears. Partial recovery: the average gain was improved 10 dB or more when compared with the initial audiogram. Unchanged: the final average gain was within 10 dB. Moreover, each band of frequencies was statistically compared before and after the treatment, for the low-tone SSHL group (125, 250, 500 Hz) and for the high-tone SSHL group (4,000 and 8,000 Hz, respectively). The patients were

also asked to report on persistent tinnitus, possible recurrences of sudden hearing loss or episodes compatible with Ménière disease.

Statistics

The variables in this study included gender, age, affected side, follow-up period, hearing thresholds at each frequency pre and posttreatment, time gap between the onset of sudden hearing loss and the start of treatment.

Absolute and relative frequencies for all demographic and clinical variables were obtained. All variables were checked for normality via the Kolmogorov-Smirnov test. Non-parametric tests were used where applicable. Collinearity among scores and other variables in the study was assessed via a correlation matrix, using Pearson r or Spearman ρ correlation coefficient. The Student t -test or the Mann-Whitney U-test was used for independent sample comparisons. Paired t -test or paired Wilcoxon signed rank test was used for paired comparisons. Pearson Chi square was used for categorical comparisons. The Type I error probability associated with all tests in this study was set to 0.05. The statistical analyses were performed using the IBM SPSS Statistics for Windows, version 23.0 package (IBM Corp., Armonk, NY, USA).

Results

The pattern of hearing levels (based on pure tone average at each frequency) of pre and posttreatment is illustrated in ►Fig. 1 and 2 for the low-tone and high-tone SSHL groups, respectively. A very statistically significant improvement in hearing was found for all low frequencies (125, 250, 500 Hz) in the low-tone SSHL group (►Table 2). In the high-tone SSHL group, a significant hearing recovery was revealed at 4,000 Hz; however, there was no improvement in hearing at 8,000 Hz (►Table 3).

According to ►Table 4, at the final follow-up, the low-tone SSHL group showed better hearing outcome compared with the high-tone SSHL group. Complete hearing recovery was observed in 77.7% of patients of the low-tone SSHL group compared with 15% of cases of the high-tone SSHL group.

In our study, gender, age, affected side and follow-up period had no statistically significant impact on hearing outcome (►Table 1); the earlier onset of treatment would possibly affect the hearing recovery in the low-tone group (statistical

Table 1 Patient characteristics with low- and high-tone sudden sensorineural hearing loss

	Gender (males/females)	Age (range in years, mean \pm SD)	Side (right/left)	Delay of treatment (range in days, mean \pm SD)	Follow-up (in years, mean \pm SD)
Low-tone ($n = 27$)	10/17	19–72, 44.1 \pm 13.1	13/14	0–14; 2.7 \pm 3.3	3.3 \pm 2.9
High-tone ($n = 20$)	8/12	16–64, 41.4 \pm 13.5	11/9	0–60; 8.6 \pm 14.2	2.8 \pm 1.6
Post-treatment	$p = 0.537$	$p = 0.496$	$p = 0.433$	$p = 0.089$	$p = 0.947$

Abbreviation: SD, standard deviation.

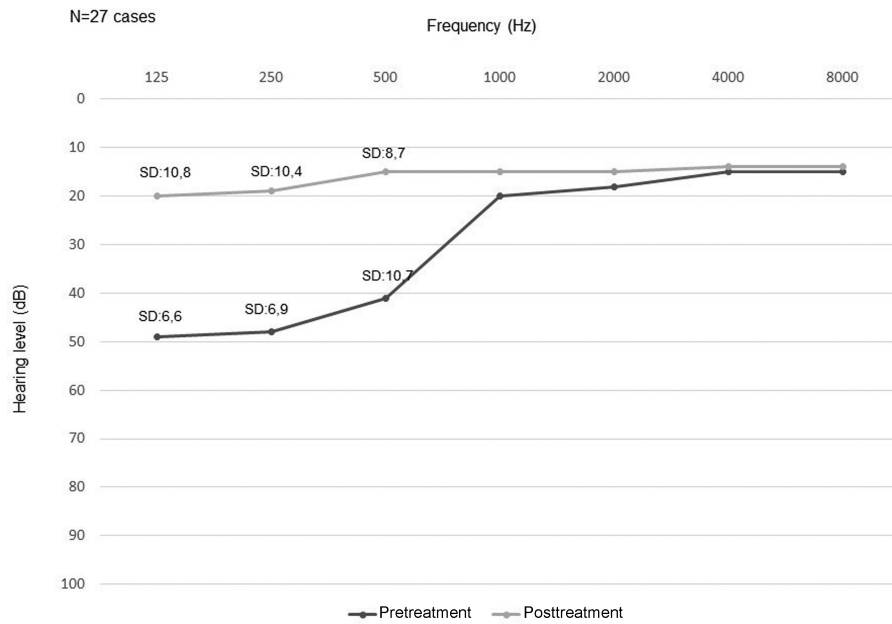


Fig. 1 Audiometric configuration of low-tone sudden sensorineural hearing loss based on average hearing thresholds, pre- and posttreatment, at each frequency (SD: standard deviation).

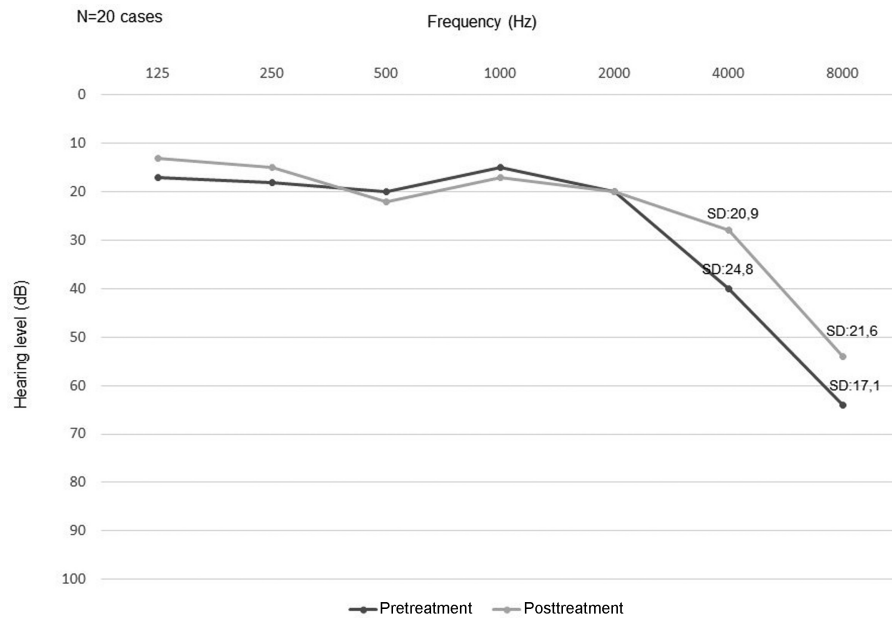


Fig. 2 Audiometric configuration of high-tone sudden sensorineural hearing loss based on average hearing thresholds, pre- and posttreatment, at each frequency (SD: standard deviation).

Table 2 Low-tone sudden sensorineural hearing loss group; pure tone audiogram average threshold by frequency (dB HL) pre and posttreatment

Hz	Pre	Post	p Value
125	49.44 ± 6.699	20.56 ± 10.860	< 0.001
250	48.15 ± 6.954	19.26 ± 10.442	< 0.001
500	41.48 ± 10.725	15.93 ± 8.775	< 0.001

Table 3 High-tone sudden sensorineural hearing loss group; pure tone audiogram average threshold by frequency (dB HL) pre and posttreatment

Hz	Pre	Post	p-value
4,000	40.00 ± 24.815	28.25 ± 20.981	0.016
8,000	64.00 ± 17.137	54.75 ± 21.611	0.081

Table 4 Hearing recovery at the last follow-up in low- and high-tone sudden sensorineural hearing loss

	Complete	Partial	Unchanged
Low-tone (n = 27)	21 (77.7%)	3 (11.1%)	3 (11.1%)
High-tone (n = 20)	3 (15%)	6 (30%)	11 (55%)

Note: The low-tone sudden sensorineural hearing loss group showed better hearing outcome compared with the high-tone sudden sensorineural hearing loss group (Pearson Chi-squared test, $p < 0.001$)

trend), but the same would not happen in the high-tone SSSL group. No statistically significant difference ($p = 0.088$) was found between the early and the late subgroup in both groups related to the time elapsed (less/more than 2 days) from the onset of hearing loss to the start of treatment.

At the last follow-up (~ 3 years) in the low-tone SSSL group, 3 (11%) patients were still complaining of tinnitus, and another 6 (22%) patients had recurrences of low-tone SSSL in the diseased ear, half of them in the first year of the first attack; Ménière disease occurred in the diseased ear of another 2 (7%) patients at 1.5 and 10 years after SSSL onset, respectively. Overall, no complete relief from symptoms was reported in 40% (11 patients) of cases in the low-tone SSSL group.

Compared with the low-tone SSSL group, a higher proportion (15/20 cases, 75%) of patients in the high-tone SSSL group reported persistent symptoms. From these, 13 (65%) patients still had tinnitus in the diseased ear and another 2 patients suffered from 2 (10%) recurrences; 1 patient experienced a 2nd episode of SSSL in the diseased ear 1 month later, and the other patient 3 years later. In this group, no patient experienced episodes compatible with Ménière disease.

Discussion

Most authors have already reported that the prognosis of low-tone SSSL (or upward-sloping audiogram) is better than that of high-tone SSSL (or downward-sloping audiogram),^{1,5} although this is not in agreement with other studies.^{6,7} In our study, high-tone SSSL was audiometrically defined as thresholds elevation restricted to high-frequencies, in contrast to low-tone SSSL. According to the results, patients with hearing loss in the high-frequency band clearly had poorer recovery rates than those with hearing loss in low-frequency band (77.7% versus 15%). The symptoms in high-tone SSSL were quite similar to those in low-tone SSSL, characterized by a sensation of loss of auditory acuity, tinnitus, autophony or fullness in the affected ear; moreover, female preponderance and peak incidence during the fourth decade of life⁸ seem to be common in these two clinical entities (►Table 1).

Our treatment for low-tone SSSL group was based on intravenous steroid with complete recovery of hearing in 77.7% of patients, which is comparable to the findings of other

relatively recent studies.^{1,9} Jung et al¹ found an audiometric improvement rate of 76% with oral steroids alone (follow-up: 8 weeks), which was better than 50% achieved after intratympanic steroid injections alone and 76.9% with combination of the two methods. In a study with almost 2 years of follow-up, Roh et al⁹ demonstrated complete hearing improvement in 75% of patients after treatment mainly with oral steroids, which was very close to the results obtained in our last follow-up. However, Morita et al¹⁰ showed lower recovery rates with oral steroid alone (63%) but with 2 months follow-up. It has also been advocated that when diuretics were added to steroids the recovery rates are significantly improved (78.2% to 83.9%).^{4,10,11}

In high-tone SSSL, the hearing recovery was statistically significant after treatment at all frequencies, except at 8,000 Hz (►Table 3). We have no explanation why the treatment for high-tone SSSL is ineffective at 8,000 Hz. It is possible that this region of cochlea at the end portion of the basal turn is most vulnerable to damage, reflecting the gradual downward-sloping hearing loss in presbycusis or ototoxicity with degradation of hearing thresholds at higher frequencies. It has been reported that the levels of glutathione, an antioxidant, tend to be lower at the most basal cochlear turn hair cells and inversely increasing toward the apex;¹² glutathione peroxidase is an enzyme that alter reactive oxygen species to less damaging forms.¹²

The pathophysiologic mechanism of low-tone SSSL is still unclear. According to studies, the low-tone SSSL may be a variant of Ménière disease, or the beginning period of Ménière disease.^{1,13} Yamasoba et al,¹⁴ using glycerol test and electrocochleogram (elevated SP/AP ratio), suggested that low-tone SSSL might be caused by endolymphatic hydrops. Fuse et al¹⁵ reported that the etiology of low-tone SSSL involves an autoimmune response of the endolymphatic sac that induces endolymphatic hydrops. On the other side, Choi et al¹¹ supported that low-tone SSSL might be a different disease entity from Ménière disease, since only 1 among 18 patients who had been checked with electrocochleogram during acute low-tone SSSL showed elevated SP/AP ratio. Moreover, Wu and Young¹⁶ demonstrated that low-tone SSSL should be differentiated from Ménière disease on the basis of vestibular evoked myogenic potentials (VEMPs), since most patients with low-tone SSSL revealed normal VEMPs; in contrast, 50% of Ménière disease patients with low-tone hearing loss showed abnormal VEMPs. In our study, low-tone SSSL progressed to Ménière disease in only 2 (2/27, 7%) patients at 1.5 and 10 years after the SSSL onset. Similarly, Yamasoba et al¹⁴ reported that 5 (11%) out of 45 patients followed up for more than 3 years developed Ménière disease. Compared with low-tone SSSL cases, our patients with high-tone SSSL did not develop Ménière disease, although initially there were a few complaints of lightheadedness and instability. It seems that low-tone SSSL is not the same disease as Ménière disease because a limited proportion of low-tone SSSL cases progressed to Ménière disease.

However, recurrences occurred more frequently in the low-tone SSSL (22%) than in the high-tone SSSL group (10%). It has been postulated¹⁷ that patients with low-tone SSSL

suffering of recurrent episodes of hearing loss tended to have endolymphatic hydrops (higher summation potential/action potential [SP/AP] ratio of electrocochleography), whereas those without recurrent episodes do not. According to previous reports,^{1,3,9,14} the incidence of recurrences after low-tone SSSL onset has ranged from 9 to 45%, the majority of them were documented within one year of the first attack.^{3,9} Indeed, Oishi et al⁵ supported that if the low-tone SSSL patients display hearing fluctuations within one year after the initial attack, about half of them exhibited high- and pan-frequency hearing loss within 10 years of onset; nevertheless, with regard to progression of hearing loss at high frequencies we should consider the effect of aging.

In both groups, no factors such as gender, age, affected side, follow-up period, hearing thresholds at each frequency pre and posttreatment have been found to be significant in prognosis. The earlier onset of treatment would possibly affect the hearing recovery in the low-tone SSSL group (statistical trend). In addition, a prompt treatment with steroids within 2 days from the onset of low- or high-tone SSSL was not apparently related to the final hearing outcome. However, it has been advocated that age,¹¹ co-occurrence of tinnitus,¹ degree of pretreatment hearing loss on the affected side¹ and time interval between onset and start of treatment¹¹ are positive prognostic factors of hearing recovery in low-tone SSSL.

Conclusion

High-tone SSSL, which is characterized by hearing loss at high frequencies, shows poor recovery rates and residual symptoms, such as tinnitus; low-tone SSSL has a more favorable hearing outcome but is more often associated with recurrences and less commonly progressed to Ménière disease. Further studies are needed, as well as more extensive research, to better understand the etiology of both low- and high-tone SSSL.

References

- Jung AR, Kim MG, Kim SS, Kim SH, Yeo SG. Clinical characteristics and prognosis of low frequency sensorineural hearing loss without vertigo. *Acta Otolaryngol* 2016;136(02):159–163
- Abe T. Acute sensorineural hearing loss in low tone frequencies. *Otolaryngology (Tokyo)* 1982;54:385–392
- Fushiki H, Junicho M, Aso S, Watanabe Y. Recurrence rate of idiopathic sudden low-tone sensorineural hearing loss without vertigo: a long-term follow-up study. *Otol Neurotol* 2009;30(03):295–298
- Im GJ, Kim SK, Choi J, Song JJ, Chae SW, Jung HH. Analysis of audio-vestibular assessment in acute low-tone hearing loss. *Acta Otolaryngol* 2016;136(07):649–654
- Oishi N, Inoue Y, Saito H, Kanzaki S, Kanzaki J, Ogawa K. Long-term prognosis of low-frequency hearing loss and predictive factors for the 10-year outcome. *Otolaryngol Head Neck Surg* 2010;142(04):565–569
- Edizer DT, Çelebi Ö, Hamit B, Baki A, Yiğit Ö. Recovery of idiopathic sudden sensorineural hearing loss. *J Int Adv Otol* 2015;11(02):122–126
- Narozny W, Kuczkowski J, Kot J, Stankiewicz C, Sicko Z, Mikaszewski B. Prognostic factors in sudden sensorineural hearing loss: our experience and a review of the literature. *Ann Otol Rhinol Laryngol* 2006;115(07):553–558
- Imamura S, Nozawa I, Imamura M, Murakami Y. Clinical observations on acute low-tone sensorineural hearing loss. Survey and analysis of 137 patients. *Ann Otol Rhinol Laryngol* 1997;106(09):746–750
- Roh KJ, Lee EJ, Park AY, Choi BI, Son EJ. Long-term outcomes of acute low-tone hearing loss. *J Audiol Otol* 2015;19(02):74–78
- Morita S, Suzuki M, Iizuka K. A comparison of the short-term outcome in patients with acute low-tone sensorineural hearing loss. *ORL J Otorhinolaryngol Relat Spec* 2010;72(06):295–299
- Choi HG, Park KH, Seo JH, Kim DK, Yeo SW, Park SN. Clinical and audiologic characteristics of acute low-tone sensorineural hearing loss: therapeutic response and prognosis. *Korean J Audiol* 2011;15:8–13
- Wong AC, Ryan AF. Mechanisms of sensorineural cell damage, death and survival in the cochlea. *Front Aging Neurosci* 2015;7:58
- Noguchi Y, Nishida H, Tokano H, Kawashima Y, Kitamura K. Comparison of acute low-tone sensorineural hearing loss versus Meniere's disease by electrocochleography. *Ann Otol Rhinol Laryngol* 2004;113(3 Pt 1):194–199
- Yamasoba T, Kikuchi S, Sugawara M, Yagi M, Harada T. Acute low-tone sensorineural hearing loss without vertigo. *Arch Otolaryngol Head Neck Surg* 1994;120(05):532–535
- Fuse T, Hayashi T, Oota N, et al. Immunological responses in acute low-tone sensorineural hearing loss and Ménière's disease. *Acta Otolaryngol* 2003;123(01):26–31
- Wu CL, Young YH. Vestibular evoked myogenic potentials in acute low-tone sensorineural hearing loss. *Laryngoscope* 2004;114(12):2172–2175
- Junicho M, Aso S, Fujisaka M, Watanabe Y. Prognosis of low-tone sudden deafness - does it inevitably progress to Meniere's disease? *Acta Otolaryngol* 2008;128(03):304–308