



# Identification and characterization of the first endogenous phospholipase A<sub>2</sub> inhibitor from a non-venomous tropical snake, *Boa constrictor* (Serpentes: Boidae)

Consuelo L. Fortes-Dias<sup>1\*</sup> , Diego Henrique Fagundes Macedo<sup>1</sup>,  
Rafaela Pereira Barbosa<sup>1</sup>, Gabriel Souza-Silva<sup>1</sup>, Paula Ladeira Ortolani<sup>1</sup>

<sup>1</sup>Research & Development Center, Ezequiel Dias Foundation (FUNED), Belo Horizonte, MG, Brazil.

## Keywords:

Phospholipase A<sub>2</sub> inhibitor  
Phospholipase A<sub>2</sub>  
Boidae  
Snakes  
Rattlesnake venom

## Abstract

**Background:** Endogenous phospholipase A<sub>2</sub> inhibitors from snake blood (sbPLIs) have been isolated from several species around the world, with the primary function of self-protection against the action of toxic phospholipases A<sub>2</sub>. In American snakes, sbPLIs were solely described in pit vipers, in which the natural protection role is justified. In this study, we described a sbPLI in *Boa constrictor* (popularly known as *jiboia*), a non-venomous snake species from America.

**Methods:** PLA<sub>2</sub> inhibitory activity was tested in the blood plasma of *B. constrictor* using *C. d. terrificus* venom as the enzyme source. Antibodies developed against CNF, a sbγPLI from *Crotalus durissus terrificus*, were used to investigate the presence of homologues in the blood plasma of *B. constrictor*. A CNF-like molecule with a PLA<sub>2</sub> inhibitory activity was purified by column chromatography. The encoding gene for the inhibitor was cloned from *B. constrictor* liver tissue. The DNA fragment was cloned, purified and sequenced. The deduced primary sequence of interest was aligned with known sbγPLIs from the literature.

**Results:** The blood plasma of *B. constrictor* displayed PLA<sub>2</sub> inhibitory activity. A CNF-like molecule (named BcNF) was identified and purified from the blood plasma of *B. constrictor*. Basic properties such as molecular mass, composing amino acids, and pI were comparable, but BcNF displayed reduced specific activity in PLA<sub>2</sub> inhibition. BcNF showed highest identity scores (ISs) with sbγPLIs from pit vipers from Latin America (90-100%), followed by gamma inhibitors from Asian viperid (80-90%). ISs below 70% were obtained for BcNF and non-venomous species from Asia.

**Conclusion:** A functional sbγPLI (BcNF) was described in the blood plasma of *B. constrictor*. BcNF displayed higher primary identity with sbγPLIs from Viperidae than to sbγPLIs from non-venomous species from Asia. The physiological role played by sbγPLIs in non-venomous snake species remains to be understood. Further investigation is needed.

\* Correspondence: consuelo.latorre@funed.mg.gov.br  
<http://dx.doi.org/10.1590/1678-9199-JVATITD-2019-0044>

Received: 30 July 2019; Accepted: 17 December 2019; Published online: 13 March 2020.



## Background

Secretory phospholipases A<sub>2</sub> are widely distributed as toxic components of snake venoms. A number of snake species express endogenous snake blood phospholipase A<sub>2</sub> inhibitors (sbPLIs). This kind of molecules was first described in venomous snakes with the primary function of self-protection against an eventual presence of snake venom PLA<sub>2</sub> (svPLA<sub>2</sub>) in their own blood stream [1, 2]. According to the presence of known domains from mammal proteins – C-type lectin-like, tandem leucine-rich repeats (LRRs), or three-finger motifs – sbPLIs were grouped into alpha (α), beta (β) or gamma (γ) structural classes, respectively [3]. Comparable inhibitors were later identified in a number of non-venomous species [4, 5, 6, 7, 8, 9]. Whether venomous or not, some snake species express sbPLIs belonging to up to three different structural classes simultaneously [3, 7, 10, 11].

SbyPLIs are the most widely distributed inhibitors among elapid and viperid species from the Old and New World [12, 13, 14]. Concerning non-venomous snakes, as far as we know, until now sbyPLIs were solely purified from Asian species [4, 5, 6, 7, 8, 9]. With that in mind, we investigated the presence of this kind of inhibitor in *Boa constrictor* – a non-venomous tropical snake – popularly known as *jiboia*. We identified a functional sbyPLI, cloned the encoding gene from liver tissue and structurally characterized the deduced protein. The sbyPLI was named BcNF by analogy with CNF (*Crotalus* neutralizing factor), a prototype of this class of inhibitors previously isolated from the South American rattlesnake, *Crotalus durissus terrificus* [15, 16].

## Methods

### *Boa constrictor* blood plasma and liver tissue collection

Heparinized blood plasma and liver tissue fragments were collected from a *Boa constrictor* specimen captured in the municipality of Contagem (19°55'54" S, 44°03'13" W), in the Brazilian state of Minas Gerais. The specimen was kept in captivity in the Serpentarium of Ezequiel Dias Foundation until death by natural causes. The whole blood was collected immediately after the animal death, centrifuged for plasma separation and clarified using a 0.22-μm microfilter. The total protein content was estimated by spectrophotometry readings at 280 nm. One optical density unit was considered to be equivalent to 1 mg/mL of protein. Liver fragments were collected in DEPC-treated tubes and quickly frozen in liquid nitrogen. Whenever applicable, blood plasma and tissue liver from *C. d. terrificus* specimens were used as reference.

### Fractionation of *B. constrictor* blood plasma

Five hundred microliters of *B. constrictor* blood plasma were diluted to 10 mL with 25 mM Tris-HCl, 0.1 M NaCl pH 8.7 (buffer A) and dialyzed against the same buffer to ensure ionic

equilibrium. After centrifugation to remove any insoluble material, the supernatant was loaded into an anion exchange column (Hitrap QFF 1mL, GE HealthCare). Protein elution was performed with a linear gradient of 25 mM Tris-HCl, pH 8.7, containing 2.0 M NaCl (buffer B), under a flow rate of 1 mL/min. Fractions with inhibitory activity (1 mL each) were pooled, 4-fold diluted with a saturated ammonium sulfate (SAS) solution and loaded into hydrophobic interaction columns connected in series [four columns HiTrap Phenyl FF 5 mL (low sub) column, GE HealthCare]. Elution was performed with a decreasing salt gradient under a flow of 5 mL/min. Total protein concentration was estimated by optical density readings of the eluted fractions at 280 nm.

### Inhibition of PLA<sub>2</sub> activity

The crude venom of *C. d. terrificus* was used as a source of PLA<sub>2</sub>. Increasing volumes of snake blood plasma with known protein concentration were preincubated with a fixed concentration (50 μg/mL) of *C. d. terrificus* venom for 30 min at 37°C. The same procedure was applied to purified fractions, after dialysis against 25 mM ammonium formate, pH 6.5, whenever necessary. Residual PLA<sub>2</sub> activity was evaluated by measuring the clearing halos (in mm) of hydrolysis in agar gels with incorporated hen egg yolk suspension [17]. Negative (PBS) and positive (no blood plasma) controls were run in parallel. Inhibition curves were constructed by plotting the halo diameter against protein concentration in logarithm scale. Data were analyzed by linear regression using least squares method in the Graph Prism 6.0 for Mac OS X (GraphPad software Inc., California). Curve limits were calculated with 95% of confidence level. Specific activities were represented by curve slopes and expressed by mean ± S.D. Whenever applicable, regression line slopes were statistically compared in pairs.

### SDS-PAGE and western blotting

*B. constrictor* blood plasma and purified BcNF were analyzed by SDS-PAGE in a 15% homogeneous or in an 8-25% gradient Phast® gel (Phast System®, GE HealthCare). Western blotting was revealed with rabbit anti-CNF IgG (0.5 mg/mL), followed by commercial anti-rabbit IgG-peroxidase antibody (A0545, Sigma) at a 1:5000 dilution. The color reaction was developed with DAB (3,3' diaminobenzidine tetrahydrochloride) in the presence of H<sub>2</sub>O<sub>2</sub>.

### RNA extraction and cDNA synthesis

Total RNA was isolated from about 50 mg of *B. constrictor* liver tissue using Trizol® (Invitrogen, USA) following the manufacturer's instructions. RNA integrity was analyzed by gel electrophoresis in a 0.8% agarose gel using TBE (89 mM Tris base, 89 mM boric acid, 2 mM EDTA, pH 8.0) as running buffer. RNA bands were visualized under UV light, after staining with ethidium bromide. After cDNA synthesis using 2 to 5 μg of total RNA and oligo(dT)12-18 primer (First-Strand Synthesis kit,

Invitrogen, USA), polymerase chain reactions were carried out with specific oligonucleotides based on the primary structure of CNF [15]: 3'CGCTCATGTGACTTTTGTAC5' (sense, amino-terminus), 3'TCAGAGGCTTGCCAATCTGATG5' (antisense, carboxy-terminus). A housekeeping gene ( $\beta$ -actin) was PCR-amplified in parallel, in the presence of adequate oligonucleotides.

Fresh PCR products were cloned into the pGEM-T vector (Promega, USA) following the manufacturer's instructions. Insert-containing clones were isolated after PCR screening of transformed NM522 *E. coli*. Negative control contained no DNA. Amplified products were analyzed by electrophoresis in 1.0 % agarose gels in TBE buffer, in the presence of ethidium bromide. DNA from three positive clones were completely sequenced by the dideoxy chain termination method [18] on an automated ABI Prism 310 Genetic Analyzer (Perkin Elmer Applied Biosystems, USA) with the Big Dye Terminator Cycle Sequencing Ready Reaction (Perkin Elmer Applied Biosystems, USA). M13 forward and M13 reverse oligonucleotides were used as primers.

The cycling conditions were 3 min at 94°C, 35 cycles of 30 sec at 94°C, 30 sec at 55°C and 1 min at 72°C, followed by an extension period of 5 min at 72°C in a TC412 thermocycler (Techne).

### Primary/secondary structure predictions and multiple alignment

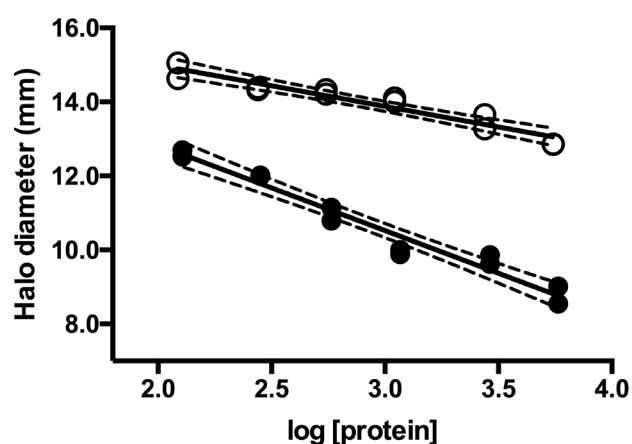
Three complete reads in both directions were assembled and aligned against each other. The consensus sequence was used to deduce the primary structure and main basic properties of BcNF. The secondary structure was predicted using the Chou Fasman algorithm. Multiple sequencing alignments with primary structures of other sbyPLIs were performed using the ClustalW algorithm and a Gonnet's similarity matrix was subsequently generated. Inclusion criterium for sbyPLIs was the access to chemically determined or deduced primary structures in public data bases. For species with two or more sequence deposits due to isoforms, calculated consensus was taken as representative of the inhibitor. Signal peptides were removed, whenever necessary. The sbyPLIs from the following snake species were aligned: *Bothrops alternatus* (ABV91326/7), *Bothrops erythromelas* (ABV91328/9), *Bothrops jararaca* (ABV91330/1), *Bothrops jararacussu* (ABV91332/3), *Bothrops moojeni* (ABV91332/5), *Bothrops neuwiedi* (ABV91336/7), *Crotalus durissus terrificus* (AAA19162), *Elaphe climacophora* (BAH47550), *Elaphe quadrivirgata* (BAA83078), *Gloydus brevicaudus* (formerly *Agkistrodon blomhofii siniticus*) (BAA86970), *Lachesis muta* (AAR04437/8), *Malayopython reticulatus* (formerly *Python reticulatus*) (AAF73945), *Notechis scutatus* (CAB56615/6/7), *Oxyuranus microlepidotus* (AAF23784), *Oxyuranus scutellatus* (AAF23781), *Protobothrops flavoviridis* (formerly *Trimeresurus flavoviridis*) (BAA24502), *Protobothrops elegans* (BAJ14719/20/21), *Pseudonaja textilis* (AAF23783), *Sinonatrix annularis* (JN975878). All the procedures were performed using

the MacVector 16.0.10 software (Mac Vector Inc., USA) with default parameters.

## Results

### Identification and purification of BcNF from *B. constrictor* blood plasma

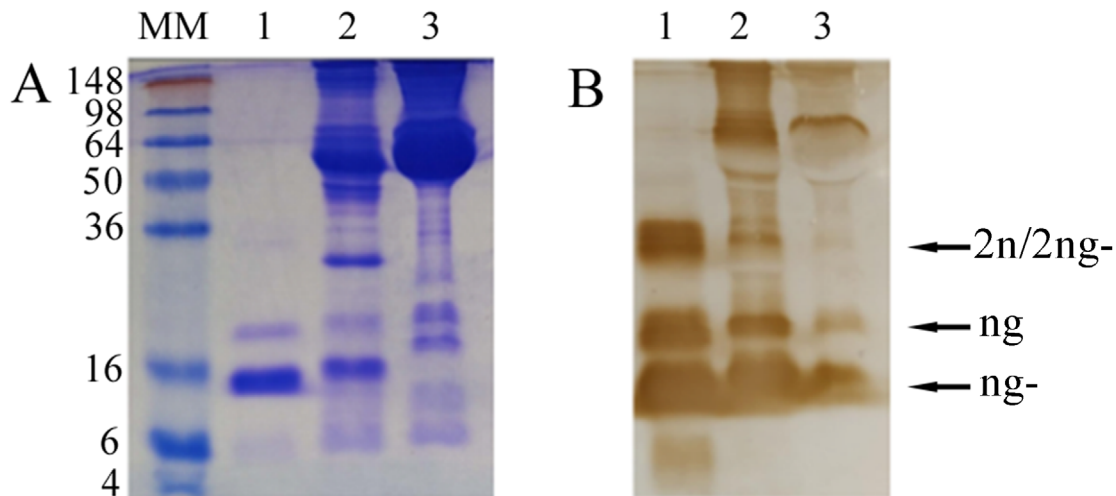
First, the blood plasma of *B. constrictor* was tested for inhibition of *C. d. terrificus* venom PLA<sub>2</sub> (Fig. 1). Inhibition was observed, although to a lesser extent when compared to *C. d. terrificus* blood plasma (positive control). Specific activities for PLA<sub>2</sub> inhibition were:  $-1.112 \pm 0.1075$  and  $-2.307 \pm 0.1498$  for *B. constrictor* and *C. d. terrificus* blood plasma, respectively. These activities were statistically different ( $p < 0.0001$ ). PLA<sub>2</sub> inhibition activity was significantly lower for *B. constrictor* blood plasma.



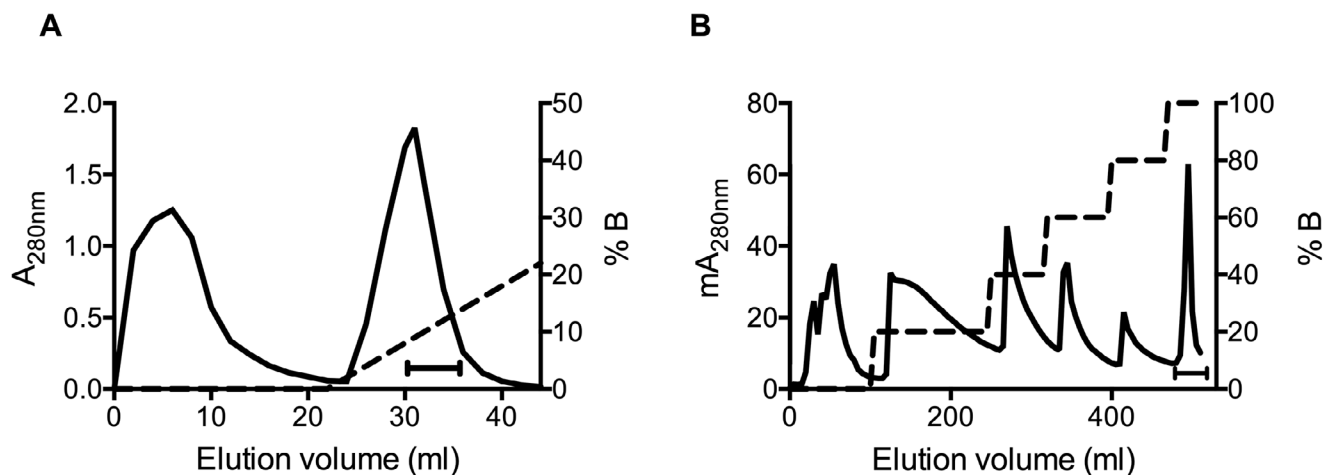
**Figure 1.** Inhibition curves of PLA<sub>2</sub> activity of *C. d. terrificus* venom by the blood plasma of *Boa constrictor* (white dots). The blood plasma of *C. d. terrificus* was used as reference (black dots). Curve equations:  $y = (-1.112 \pm 0.1075)x + (17.22 \pm 0.3193)$  for *B. constrictor* and  $y = (-2.307 \pm 0.1498)x + (17.45 \pm 0.4478)$  for *C. d. terrificus*, with determination coefficient ( $R^2$ ) of 0.9145 and 0.9546, respectively. The 95% confidence intervals of the best fit curves are indicated by dashed lines.

Following, we investigated whether the observed inhibition could be due to the presence of a sbyPLIs. Western blotting revealed the presence of a CNF-like molecule in the blood plasma of *B. constrictor*. Two main protein bands were recognized by anti-CNF antibodies (Fig. 2), with apparent molecular masses roughly corresponding to glycosylated (ng) and non-glycosylated (ng-) monomers. A fainter band was present with mol. mass of possible dimers (2ng/2ng-). The result indicated the presence of a sbyPLIs, named BcNF, in the blood plasma of *B. constrictor*.

BcNF was isolated from *B. constrictor* blood plasma using two chromatographic steps: an ionic exchange followed by a hydrophobic interaction. The eluted fractions were assayed for PLA<sub>2</sub> inhibition (Fig. 3). Fractions from the second purification step presenting inhibitory activity were combined and submitted to electrophoresis and Western blotting using anti-CNF IgG.



**Figure 2.** (A) SDS-PAGE 15% after staining with Coomassie Blue and (B) Western blotting revealed with anti-CNF IgG. Lanes: MM – molecular marker (in kDa) (SeeBlue Plus 2 Pre-stained Protein Standard, Invitrogen); 1 – CNF (20  $\mu$ g); 2 – *C. d. terrificus* blood plasma (80  $\mu$ g); 3 – *B. constrictor* blood plasma (80  $\mu$ g). The arrows indicate non-glycosylated monomer (ng-), glycosylated monomer (ng) and possible dimers (2ng/2ng-).



**Figure 3.** Purification of BcNF from *B. constrictor* blood plasma. (A) Anion-exchange and (B) hydrophobic interaction chromatograms. Elution gradients are indicated by dotted lines. PLA<sub>2</sub> inhibitor-containing fractions are indicated by horizontal bars.

A CNF-like molecule (BcNF) was mostly eluted with 100% of ultrapure water (Fig. 4). BcNF and CNF (positive control) at varying concentrations were assayed for PLA<sub>2</sub> inhibition (Fig. 5). Calculated specific activities were  $-1.344 \pm 0.1705$  and  $-4.797 \pm 0.3434$  for BcNF and CNF, respectively. These activities were statistically different ( $p < 0.0001$ ). BcNF inhibited PLA<sub>2</sub> at a significant lesser extent compared to CNF.

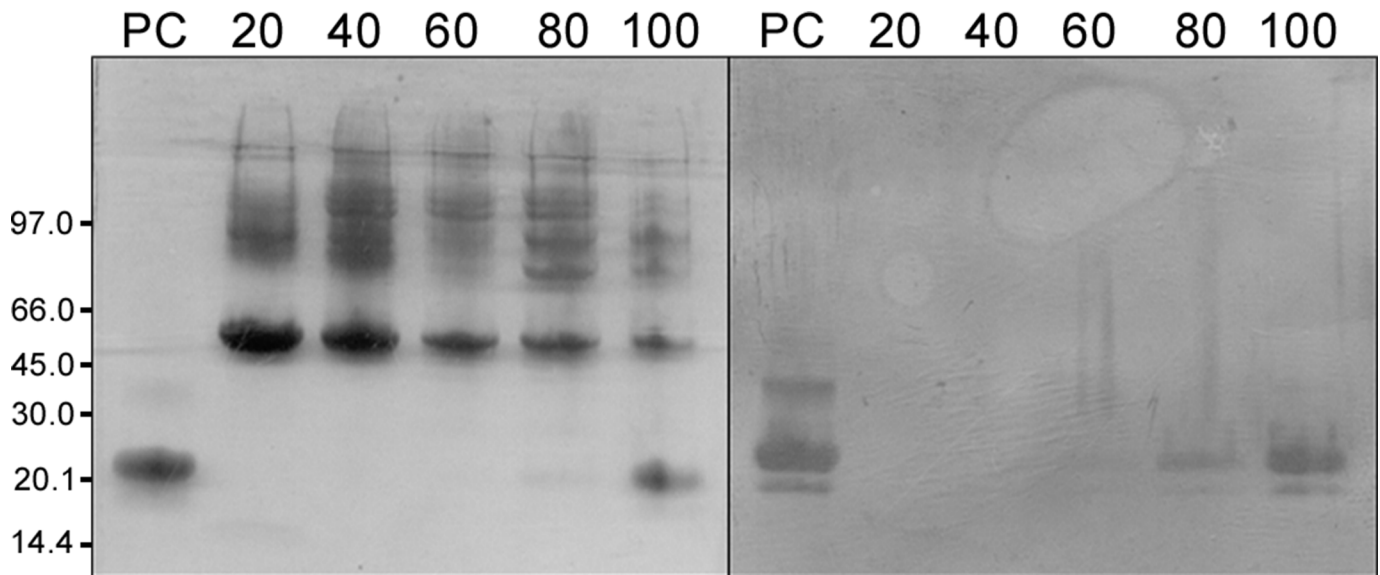
#### BcNF cloning from *B. constrictor* liver tissue

The integrity of extracted RNA from *B. constrictor* liver tissue was confirmed by the unique presence of characteristic bands

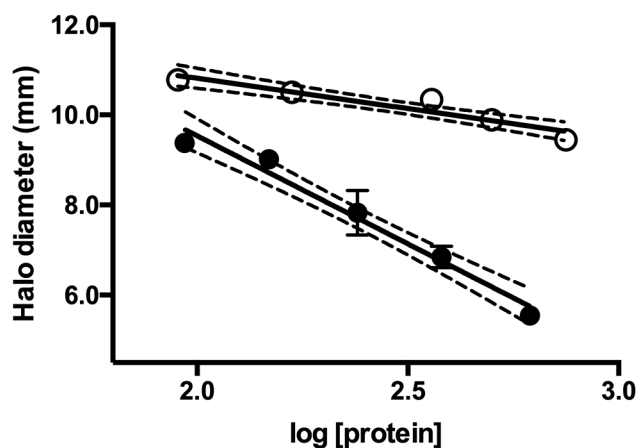
corresponding to 18S and 28S ribosomal RNAs (data not shown). After RT-PCR in the presence of specific primers for CNF, an amplicon of about 545 bp confirmed the encoding of a CNF-like protein in the liver tissue of *B. constrictor* (Fig. 6). The DNA fragment was cloned, purified and sequenced for further analysis.

#### Deduced primary structure and chemical properties predictions of BcNF

The deduced primary sequence of mature BcNF was compared to that of CNF. Both proteins are composed of 181 amino acids, including 16 conserved cysteines and a single putative N-linked



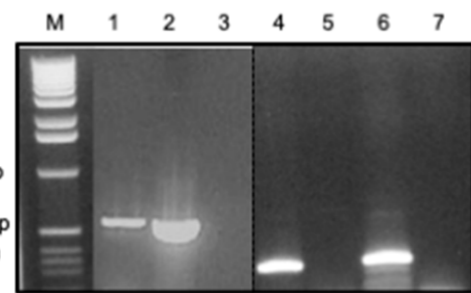
**Figure 4.** (A) SDS-PAGE in 8-25% gel after silver staining and (B) Western blotting developed with anti-CNF IgG. PC: positive control (CNF). Lanes are numbered on top according to percentages of eluent B (ultrapure water) in the hydrophobic interaction chromatography.



**Figure 5.** Inhibition curves of PLA<sub>2</sub> activity of *C. d. terrificus* venom by BcNF isolated from *B. constrictor* blood plasma (white dots). CNF from *C. d. terrificus* snakes was used as positive control for PLA<sub>2</sub> inhibition (black dots). Curve equations:  $y = (-1.344 \pm 0.1705)x + (13.50 \pm 0.4235)$  for BcNF, and  $y = (-4.797 \pm 0.3434)x + (19.13 \pm 0.4478)$  for CNF, with determination coefficient ( $R^2$ ) of 0.8860 and 0.9606, respectively. The 95% confidence intervals of the best fit curves are indicated by dashed lines.

carbohydrate site at Asn<sup>157</sup>. Fourteen amino acid substitutions were noted in BcNF when compared to CNF, one of them (R<sup>93</sup>/K<sup>93</sup>) within a segment proposed before for sbyPLIs interaction with PLA<sub>2</sub> (Fig. 7). Basic properties of BcNF and CNF are summarized in Table 1.

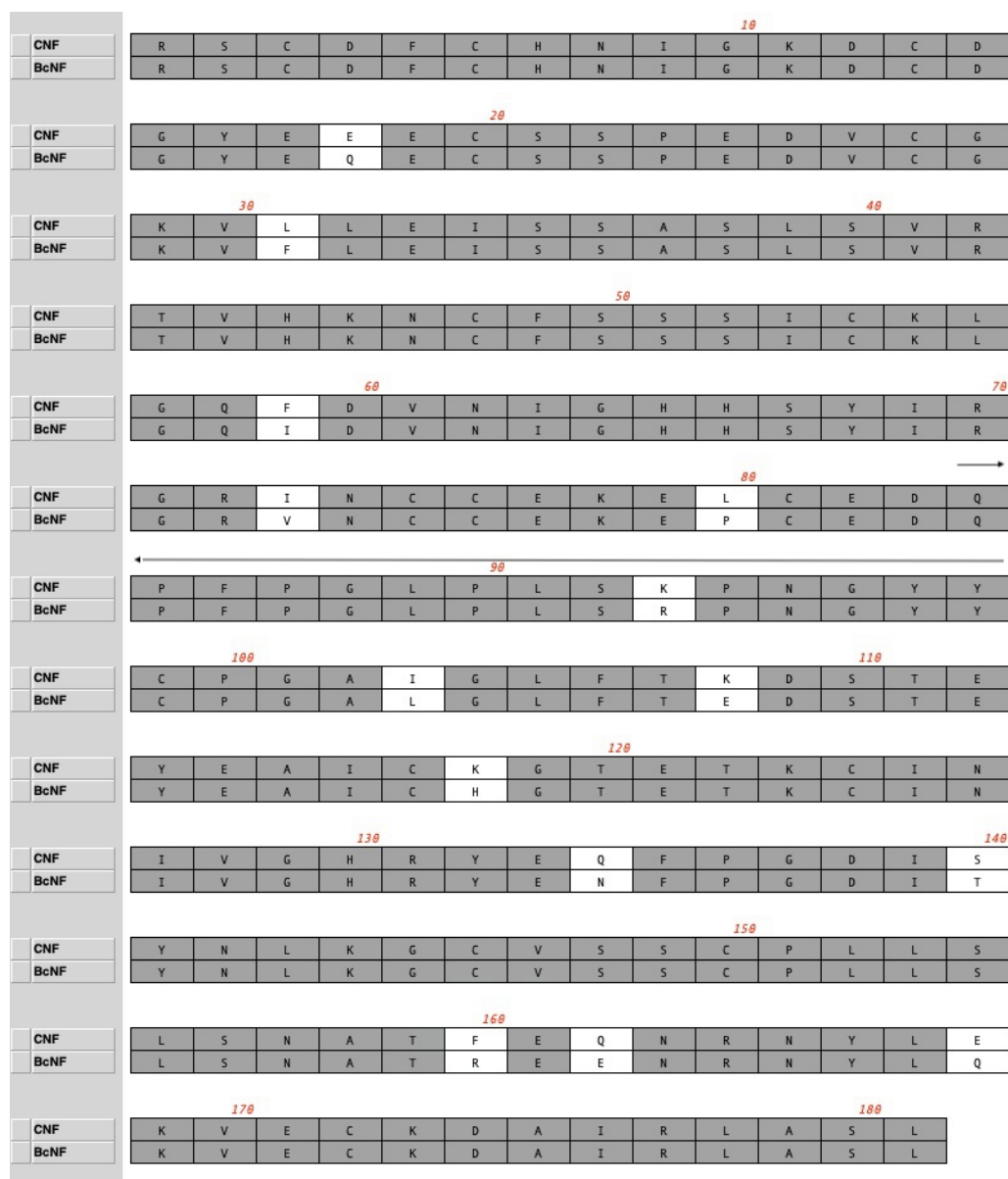
Amino acid substitutions, in general, lead to a decrease in the number of  $\alpha$ -helices from three in CNF to one in BcNF, besides a displacement of beta sheets in the predicted secondary structures of the proteins (Fig. 8).



**Figure 6.** Electrophoresis of RT-PCR products after amplification of liver tissue with specific primers for CNF (left side) or  $\beta$ -actin (right side). M: molecular marker 1 kb DNA ladder (Gibco-BRL). Lanes 1 and 4: *B. constrictor* liver; lanes 2 and 6: *C. d. terrificus* liver (reference); lanes 3 and 7: negative control (no DNA); lane 5: no reverse transcriptase in the reaction.

### Multiple sequence alignment of BcNF and other sbyPLIs

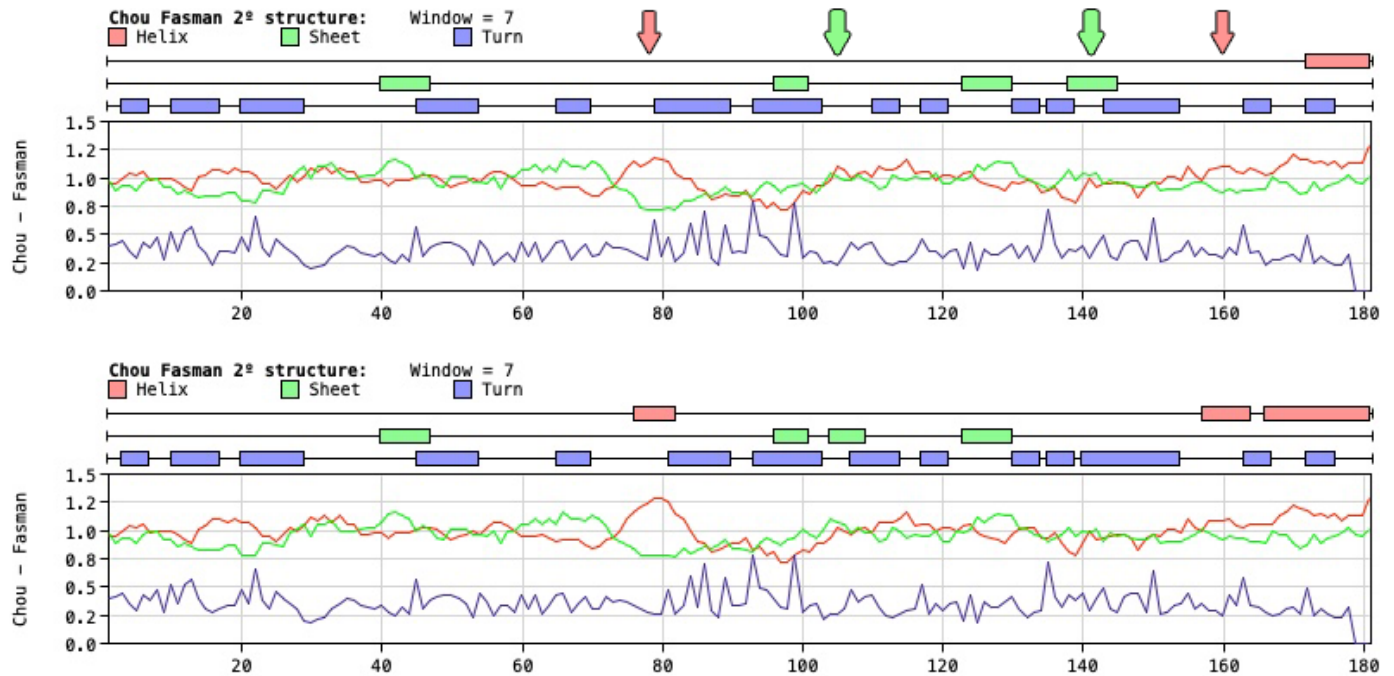
The deduced primary sequence of BcNF was multiply aligned with sbyPLIs from venomous and nonvenomous snakes from Asia, Australia and Latin America (available as [Additional file 1](#)). A similarity matrix was generated (available as [Additional file 2](#)) and the identity scores (ISs) were graphically represented (Fig. 9). For BcNF and sbyPLIs from Latin American pit vipers, most ISs were within the last decile (90-100%). ISs above 80% were obtained for Asian viperid snakes. On the other hand, when BcNF was compared to sbyPLIs from non-venomous species from Asia, the ISs were below 70%. ISs below 70% were also obtained for Elapidae snakes.



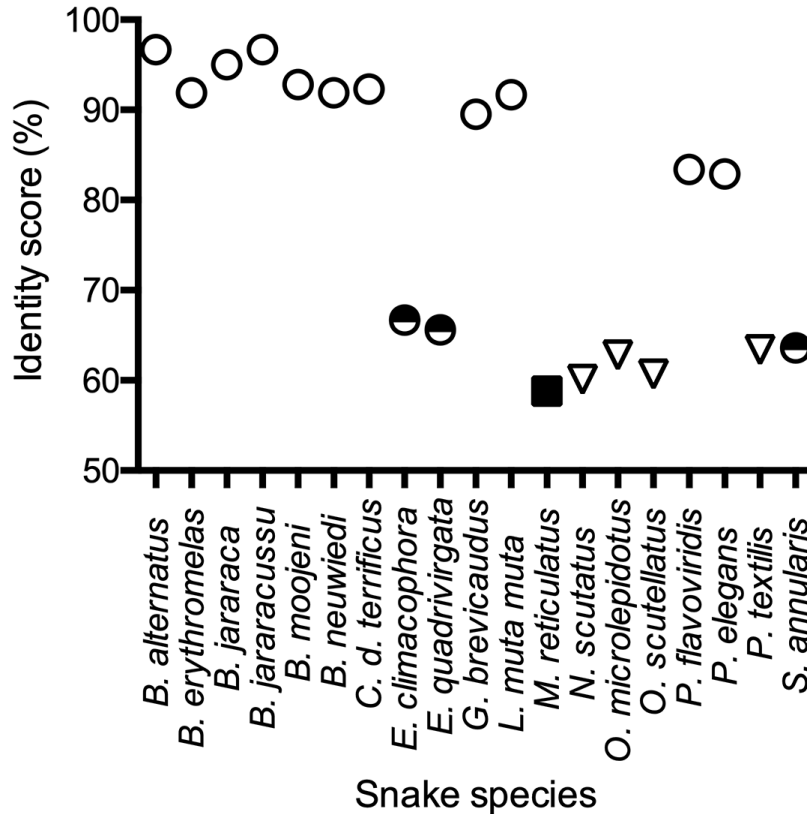
**Figure 7.** Alignment of the deduced primary structure of BcNF (sbypLI from *B. constrictor*) and CNF (sbypLI from *C. d. terrificus*). Identical amino acids are in grey background. Amino acid substitutions are in white background. The decapentapeptide Q<sup>84</sup>PFGLPLSRPNGYY<sup>98</sup> is indicated by a continuous black arrow above the numbering line.

**Table 1.** Comparison of basic properties of BcNF (sbypLI from *B. constrictor*) and CNF (sbypLI from *C. d. terrificus*)

Property	BcNF	CNF
Molecular mass (Da)	20074.57	20058.69
Isoelectric point (pI)	5.51	5.55
<b>Composing amino acids</b>		
Total (no.)	181	181
<b>Chemical character (%)</b>		
Non-polar	30.4	30.9
Polar	43.0	42.4
Acidic	13.2	13.3
Basic	13.3	13.3



**Figure 8.** Secondary structure predicted for BcNF (top) compared to CNF (bottom). The differences are indicated by arrows on top of BcNF structure, using the same color as in the structural diagram.



**Figure 9.** Graphical representation of the identity scores (ISs) obtained in Gonnet's similarity matrix after multiple alignment of the deduced primary structure of BcNF with known sbyPLIs. Black/white circle: Colubridae, white triangle: Elapidae, white circle: Viperidae, black rectangle: Pythonidae.

## Discussion

*Boa* is a Neotropical genus of snakes that occurs almost continuously from southern South America through to northern Mexico [19]. Historically recognized as monotypic, recent data based on the distinct morphological traits, color patterns exhibited by these snakes and the wide diversity of ecosystems they inhabit, collectively suggest that the genus contains multiple species [20]. In Brazil, *B. constrictor* (*sensu lato*) can be found all over the country, except in the extreme south [21]. It is an aglyphous species, devoid of venom or Duvernoy's glands. Similarly to other henophidian snakes (boas, pythons and their kin), *B. constrictor* uses constriction to subdue and kill a wide range of prey – including lizards, birds and mammals – through an interesting modulated process mediated by the victim's heartbeat [22]. Apparently, there is no need of an inhibitor for self-protection against toxic svPLA<sub>2</sub>.

The detection of sbPLIs in non-venomous snake species is not a novelty. The first sbγPLIs was isolated from *E. quadrivirgata* [6]. The finding was later attributed to feeding habits of the species on venomous snakes [7]. However, another sbγPLI – named PIP for phospholipase A<sub>2</sub> inhibitor from *Python* – was soon described in the non-venomous and non-ophiophagous species *Malayopython reticulatus* (formerly *Python reticulatus*) [8]. Since then, a number of sbPLIs were detected in colubrid from Asia: *Dinodon rufozanatum* [5], *Elaphe carinata* [5], *E. climacophora* [7], *E. rufodorsata* [5], *E. tenuis*, *Macropisthodon rudis* [9], *Synonatrix annularis* [4], and *Zaocys dhumnades* [5], in addition to xenodermatid *Achalinus rufescens* [5]. A structurally-related PIP homolog was also described in the non-venomous rock python (*P. sebae*) from Africa, although with poor PLA<sub>2</sub> inhibition activity [23]. Regarding non-venomous snakes living in the American continent, studies are lacking on any sbPLI.

*B. constrictor* inhibition of PLA<sub>2</sub> was lower than that of *C. d. terrificus* blood plasma. Similarly, BcNF was less active than CNF. Our results are in accordance with those described for *E. climacophora* and *E. quadrivirgata*. Respective sbγPLIs were detected at higher amounts in the former, and justified by the ophiophagous habits of the species [7]. It is important to note that, in addition to sbγPLIs, those *Elaphe* species express sbα- and sbβPLIs simultaneously in the circulating blood. We used antibodies developed against CNF to search for sbγPLI in *B. constrictor*. The detection of inhibitors from other structural classes is a possibility that cannot be discarded.

BcNF is highly similar to CNF, with 14 substitutions in a total of 181 amino acids and an IS of about 90%. The molecular masses of the non-glycosylated monomers, calculated from amino acid compositions, are very close (Table 1). Band migrations in gel electrophoresis also indicated similar apparent molecular masses for monomers and oligomers (Fig. 7). Like CNF, BcNF is composed by a mixture of non-glycosylated (20 kDa) and glycosylated (22-24 kDa) monomers. For CNF, which is the main subject of study in our lab, the proportion between non-

glycosylated and glycosylated varies according to the preparation. The sample loaded in SDS-PAGE (Fig. 2) was mostly non-glycosylated. However, it has been shown that the carbohydrate moiety is not essential for PLA<sub>2</sub> inhibition by CNF [24]. The same might be true for BcNF. The tendency for oligomerization might be a shared property, too. In fact, the 16<sup>th</sup>, 113<sup>th</sup>, 132<sup>nd</sup> and 166<sup>th</sup> tyrosinyl residues, which were previously suggested to form the interface between monomers in the oligomerization of CNF, are maintained at the same positions in BcNF. These residues might be involved in the oligomerization of the latter also. BcNF was only tested against svPLA<sub>2</sub> from *C. d. terrificus* venom, but the possibility of inhibition of other svPLA<sub>2</sub> cannot be discarded. The decapeptide Q<sup>84</sup>PFPGGLPLSRPNGYY<sup>98</sup>, which was previously proposed to be the best consensus motif possibly involved in the sbγPLIs interaction with PLA<sub>2s</sub> is maintained in BcNF. The only amino acid replacement was conservative (R<sup>93</sup>/K<sup>93</sup>).

Interestingly, BcNF appeared more closely related to sbγPLIs from Latin American pit vipers, and from Asian pit vipers to a lesser extent, than to those from non-venomous snakes from Asia described so far.

## Conclusion

A functional sbγPLI (BcNF) was described, for the first time, in the blood plasma of *B. constrictor*, a non-venomous species from America. BcNF displayed higher primary identity with sbγPLIs from pit vipers than with sbγPLIs from non-venomous species from Asia. Even with a growing number of sbγPLI identifications in the last years, the physiological role played by these proteins in non-venomous snake species remains to be clarified.

## Abbreviations

IS: identity score; LRRs: tandem leucine-rich repeats; SAS: saturated ammonium sulfate; sbPLI: snake blood phospholipase A<sub>2</sub> inhibitor; svPLA<sub>2</sub>: snake venom phospholipase A<sub>2</sub>.

## Acknowledgments

The authors would like to thank A. C. Valentim, L. A. Melo, R. M. Lima, P. S. Almeida for the technical support and the undergraduate students V. L. R. Perché and M. P. Romualdo for their contribution.

## Availability of data and materials

All data extracted and/or analyzed during this study are included in this published article.

## Funding

C. L. Fortes-Dias is a productivity fellow from the State of Minas Gerais Research Foundation (FAPEMIG), a Brazilian funding agency.



## Competing interests

The authors declare that they have no competing interests.

## Authors' contributions

CLFD contributed to the study conception and design, data interpretation, article drafting and writing. DHFM, RPB, GSS (undergraduate students) were responsible for data acquisition and interpretation, the literature review and article drafting. PLO was a contributor in data acquisition and interpretation, and article drafting. All authors read and approved the final manuscript.

## Ethics approval

Not applicable.

## Consent for publication

Not applicable.

## Supplementary material

The following online material is available for this article:

**Additional file 1.** Multiple alignment of sb $\gamma$ PLIs.

**Additional file 2.** Gonnet's similarity matrix obtained after multiple sequence alignment of sb $\gamma$ PLI from data bases, except for *B. constrictor*.

## References

- Kihara H. Studies on phospholipase A in *Trimeresurus flavoviridis* venom. III. Purification and some properties of phospholipase A inhibitor in Habu serum. *J Biochem.* 1976 Aug;80(2):341-9.
- Ovadia M, Kochva E, Moav B. The neutralization mechanism of *Vipera palaestinae* neurotoxin by a purified factor from homologous serum. *Biochim Biophys Acta.* 1977 Apr 25;491(2):370-86.
- Ohkura N, Okuhara H, Inoue S, Ikeda K, Hayashi K. Purification and characterization of three distinct types of phospholipase A<sub>2</sub> inhibitors from the blood plasma of the Chinese mamushi, *Agkistrodon blomhoffii siniticus*. *Biochem J.* 1997 Jul 15;325(Pt 2):527-31.
- Le Z, Li X, Yuan P, Liu P, Huang C. Orthogonal optimization of prokaryotic expression of a natural snake venom phospholipase A<sub>2</sub> inhibitor from *Sinonatrix annularis*. *Toxicon.* 2015 Dec;108:264-71.
- Li J, Xiong Y, Sun S, Yu L, Huang C. Preparation of monoclonal antibodies against gamma-type phospholipase A<sub>2</sub> inhibitors and immunodetection of these proteins in snake blood. *J Venom Anim Toxins incl Trop Dis.* 2017 Sep 28;23-37. doi: 10.1186/s40409-017-0128-5.
- Okumura K, Masui K, Inoue S, Ikeda K, Hayashi K. Purification, characterization and cDNA cloning of a phospholipase A<sub>2</sub> inhibitor from the serum of the non-venomous snake *Elaphe quadrivirgata*. *Biochem J.* 1999 Jul 1;341(Pt 1):165-71.
- Shirai R, Toriba M, Hayashi K, Ikeda K, Inoue S. Identification and characterization of phospholipase A<sub>2</sub> inhibitors from the serum of the Japanese rat snake, *Elaphe climacophora*. *Toxicon.* 2009 May;53(6):685-92.
- Twin MM, Gopalakrishnakone P, Kini RM, Armugam A, Jeyaseelan K. Recombinant antitoxic and anti-inflammatory factor from the nonvenomous snake *Python reticulatus*: phospholipase A<sub>2</sub> inhibitor and venom neutralizing potential. *Biochemistry.* 2000 Aug 8;39(31):9604-11.
- Zhong L, Huang C. Isolation and biochemical characterization of a gamma-type phospholipase A<sub>2</sub> inhibitor from *Macropisthodon rudis* snake serum. *Toxicon.* 2016 Nov;122:1-6.
- Nobuhisa I, Chiwata T, Fukumaki Y, Hattori S, Shimohigashi Y, Ohno M. Structural elements of *Trimeresurus flavoviridis* serum inhibitors for recognition of its venom phospholipase A<sub>2</sub> isozymes. *FEBS Lett.* 1998 Jun 16;429(3):385-9.
- Lizano S, Angulo Y, Lomonte B, Fox JW, Lambeau G, Lazdunski M, et al. Two phospholipase A<sub>2</sub> inhibitors from the plasma of *Cerrophidion (Bothrops) godmani* which selectively inhibit two different group-II phospholipase A<sub>2</sub> myotoxins from its own venom: isolation, molecular cloning and biological properties. *Biochem J.* 2000 Mar 15;346:631-9.
- Campos PC, de Melo LA, Dias GLF, Fortes-Dias CL. Endogenous phospholipase A<sub>2</sub> inhibitors in snakes: a brief overview. *J Venom Anim Toxins incl Trop Dis.* 2016 Jan 19;22:37. doi: 10.1186/s40409-016-0092-5.
- Picelli CG, Borges RJ, Fernandes CAH, Matioli FM, Fernandes CFC, Conceição Sobrinho J, et al. Molecular cloning and structural modelling of gamma-phospholipase A<sub>2</sub> inhibitors from *Bothrops atrox* and *Micrurus lemniscatus* snakes. *Int J Biol Macromol.* 2017 Oct;103:525-32.
- Serino-Silva C, Morais-Zani K, Hikari Toyama M, Toyama DO, Gaeta HH, Rodrigues CFB, et al. Purification and characterization of the first  $\gamma$ -phospholipase inhibitor ( $\gamma$ PLI) from *Bothrops jararaca* snake serum. *PLoS One.* 2018 Mar 5;13(3):e0193105.
- Fortes-Dias CL, Lin Y, Ewell J, Diniz CR, Liu TY. A phospholipase A2 inhibitor from the plasma of the South American rattlesnake (*Crotalus durissus terrificus*). Protein structure, genomic structure, and mechanism of action. *J Biol Chem.* 1994 Jun 3;269(22):15646-51.
16. Perales J, Villela C, Domont GB, Choumet V, Saliou B, Moussatché H, et al. Molecular structure and mechanism of action of the crotoxin inhibitor from *Crotalus durissus terrificus* serum. *Eur J Biochem.* 1995 Jan;227(1-2):19-26.
- Habermann E, Hardt KL. A sensitive and specific plate test for the quantitation of phospholipases. *Anal Biochem.* 1972 Nov;50(1):163-73.
- Sanger F, Nicklen S, Coulson AR. DNA sequencing with chain-terminating inhibitors. *Proc Natl Acad Sci U S A.* 1977 Dec;74(12):5463-7.
- Pyron RA, Reynolds RG, Burbrink FT. A taxonomic revision of *Boas* (Serpentes: Boidae). *Zootaxa.* 2014;3846(2):249-60.
- Card DC, Schield DR, Adams RH, Corbin AB, Perry BW, Andrew AL, et al. Phylogeographic and population genetic analyses reveal multiple species of *Boa* and independent origins of insular dwarfism. *Mol Phylogenet Evol.* 2016 Sep;102:104-16.
- Puerto, G, França, FOSF. Serpentes não peçonhentas. Aspectos clínicos dos acidentes. In: Cardoso, JLC editor. Animais peçonhentos no Brasil: biologia, clínica e terapêutica dos acidentes/Venomous animals in Brazil: biology, clinical and therapeutic accidents. Ed. Sarvier, São Paulo, p. 108-14; 2009.
- Boback SM, Hall AE, McCann KJ, Hayes AW, Forrester JS, Zwemer CF. Snake modulates constriction in response to prey's heartbeat. *Biol Lett.* 2012 Jun 23;8(3):473-6.
- Donnini S, Finetti F, Francese S, Boscaro F, Dani FR, Maset F, et al. A novel protein from the serum of *Python sebae*, structurally homologous with type- $\gamma$  phospholipase A<sub>2</sub> inhibitor, displays antitumour activity. *Biochem J.* 2011 Dec 1;440(2):251-62.
- Fortes-Dias CL, Ortolani PL, Fernandes CA, Lobo KR, Amaral de Melo L, Borges MH, et al. Insights on the structure of native CNF, an endogenous phospholipase A<sub>2</sub> inhibitor from *Crotalus durissus terrificus*, the South American rattlesnake. *Biochim Biophys Acta.* 2014 Sep;1844(9):1569-79.