

Static analysis of tapered nanowires based on nonlocal Euler-Bernoulli beam theory via differential quadrature method

Abstract

As a first endeavor, bending analysis of tapered nano wires with circular cross section is investigated. In this research, nonlocal elasticity theory based on Euler-Bernoulli beam theory is used to formulate the equations. Differential quadrature method (DQM) is employed to solve the governing equations. Different parameters such as nonlocal parameter, length and radius of tapered nano wires are also considered. The results of present work can be used as benchmarks for future works.

Keywords

Tapered nanowires, Nonlocal Euler-Bernoulli beam theory, Differential quadrature method, Static analysis

Maziar Janghorban^a

^aDepartment of Mechanical Engineering, Shiraz Branch, Islamic Azad University, Shiraz, Iran

Received 04 Apr 2012;
In revised form 18 Apr 2012

* Author email: maziar.janghorban@gmail.com

1 INTRODUCTION

Nonlocal theories were used for studying micro and nano structures for several times. Reddy [18] reformulated various available beam theories, including the Euler–Bernoulli, Timoshenko, Reddy, and Levinson beam theories, using the nonlocal differential constitutive relations of Eringen. Zhang et al [25] studied the free transverse vibrations of double-walled carbon nanotubes using a theory of nonlocal elasticity. Wang et al [21] investigated the buckling analysis of micro- and nano-rods/tubes based on nonlocal Timoshenko beam theory. The small scale effect on the vibration analysis of orthotropic single layered graphene sheets was studied by Pradhan and Kumar [16]. Elastic theory of the graphene sheets was reformulated using the nonlocal differential constitutive relations of Eringen. Pradhan [15] presented the buckling of single layer graphene sheet based on nonlocal elasticity and higher order shear deformation theory. Jomehzadeh and Saidi [7] decoupled the nonlocal elasticity equations for three dimensional vibration analysis of nano-plates. Malekzadeh et al [11] proposed the free vibration of orthotropic arbitrary straight-sided quadrilateral nanoplates using the nonlocal elasticity theory. The formulation was derived based on the first order shear deformation theory. Civalek et al [14] investigated the free vibration and bending analyses of cantilever microtubules based on nonlocal continuum model. Wang and Liew [23] studied the application of nonlocal continuum mechanics to static analysis of micro- and nano-structures. Aghababaei and Reddy [2] presented the nonlocal third-order shear deformation plate theory with application to bending and vibration of plates. Analytical solutions of bending and free vibration of a simply

22 supported rectangular plate were presented using this theory to illustrate the effect of non-
23 local theory. Wang [22] proposed the vibration and instability analysis of tubular nano- and
24 micro-beams conveying fluid using nonlocal elastic theory. Kiani [9] studied the application of
25 nonlocal beam models to double-walled carbon nanotubes under a moving nanoparticle. Hu et
26 al [5] investigated the nonlocal shell model for elastic wave propagation in single- and double-
27 walled carbon nanotubes. Nonlocal longitudinal vibration of single walled carbon nanotubes
28 with attached buckyballs was considered by Murmu and Adhikari [12]. Closed-form nonlocal
29 transcendental equation for vibrating system with arbitrary mass ratio i.e. mass of buckyball
30 to mass of single-walled carbon nanotubes was derived. Yang et al [24] presented the nonlin-
31 ear free vibration of single-walled carbon nanotubes using nonlocal Timoshenko beam theory.
32 The differential quadrature method was employed to discretize the nonlinear governing equa-
33 tions which were then solved by a direct iterative method to obtain the nonlinear vibration
34 frequencies of single-walled carbon nanotubes with different boundary conditions. Nonlinear
35 free vibration of embedded double-walled carbon nanotubes was studied based on Eringen's
36 nonlocal elasticity theory and von Karman geometric nonlinearity by Ke et al [8]. Mustapha
37 and Zhong [13] studied the free transverse vibration of an axially loaded non-prismatic single-
38 walled carbon nanotube embedded in a two-parameter elastic medium using nonlocal Rayleigh
39 beam.

40 Nano wires have many interesting properties that are not seen in bulk or 3-D materials.
41 Many different types of nano wires exist, including metallic (e.g., Ni, Pt, Au), semiconducting
42 (e.g., InP, Si, GaN, etc.), and insulating (e.g., SiO_2, TiO_2). Surface effects on the elastic
43 behavior of static bending nano wires were studied by using a comprehensive Timoshenko
44 beam model by Jiang and Yan [6]. Fu and Zhang [4] established a continuum elastic model
45 for core-shell nano wires with weak interfacial bonding. Critical buckling loads and resonant
46 frequencies of simply supported nano wires were obtained by using the Ritz method. Song and
47 Huang [20] presented a model of surface stress effects on bending behavior of nano wires based
48 on the incremental deformation theory. The free longitudinal vibration of tapered nanowires
49 was investigated in the context of nonlocal continuum theory by Kiani [10]. The problem was
50 studied for the nanowires with linearly varied radii under fixed-fixed and fixed-free boundary
51 conditions. From the above works, it can be seen that tapered nano wires are rarely studied.
52 So, more discussions may be needed. From the knowledge of author, up to now, it is the
53 first time that static analysis of tapered nano wires is studied. The governing equations are
54 derived based on nonlocal elasticity theory using Euler-Bernoulli beam theory. In this study,
55 the differential quadrature method as an accurate numerical tool is adopted to discretize the
56 governing equations.

57 2 DIFFERENTIAL QUADRATURE METHOD

58 The basic idea of the differential quadrature method is that the derivative of a function, with
59 respect to a space variable at a given sampling point, is approximated as the linear weighted
60 sums of its values at all of the sampling points in the domain of that variable [3, 17, 19].

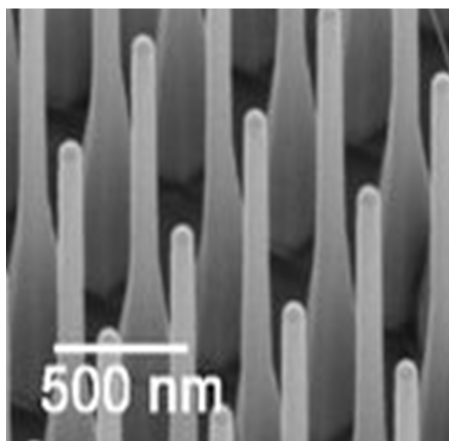


Figure 1 Nanowires [1]

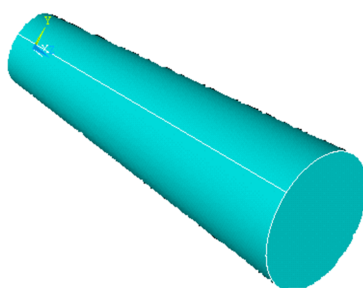


Figure 2 Tapered nanowire model

61 In order to illustrate the DQ approximation, consider a function $f(x,y)$ having its field on a
 62 rectangular domain $0 \leq x \leq a$ and $0 \leq y \leq b$. let, in the given domain, the function values be
 63 known or desired on a grid of sampling points. According to DQ method, the r^{th} derivative of
 64 a function $f(x,y)$ can be approximated as,

$$\left. \frac{\partial^r f(x,y)}{\partial x^r} \right|_{(x,y)=(x_i,y_j)} = \sum_{m=1}^{N_x} A_{im}^{x(r)} f(x_m, y_j) = \sum_{m=1}^{N_x} A_{im}^{x(r)} f_{mj} \quad (1)$$

65 where $i=1,2,\dots,N_x$, $j=1,2,\dots,N_y$ and $r=1,2,\dots, N_x - 1$

66 From this equation one can deduce that the important components of DQ approximations
 67 are weighting coefficients and the choice of sampling points. In order to determine the weighting
 68 coefficients a set of test functions should be used in Eq. (1). For polynomial basis functions DQ,
 69 a set of Lagrange polynomials are employed as the test functions. The weighting coefficients
 70 for the first-order derivatives in ξ -direction are thus determined as

$$A_{ij}^x = \begin{cases} \frac{1}{L_\xi} \frac{M(x_i)}{(x_i - x_j)M(x_j)} & \text{for } i \neq j \\ -\sum_{j=1}^{N_x} A_{ij}^x & \text{for } i = j \end{cases} ; \quad i, j = 1, 2, \dots, N_x \quad (2)$$

71 where L_x is the length of domain along the x -direction and $M(x_i) = \prod_{k=1, i \neq k}^{N_x} (x_i - x_k)$
 72 The weighting coefficients of second order derivative can be obtained as,

$$B_{ij}^x = [A_{ij}^x][A_{ij}^x] = [A_{ij}^x]^2 \quad (3)$$

73 In a similar way, the weighting coefficients for y -direction can be obtained. The weighting
 74 coefficient of the third and fourth order derivatives (C_{ij}, D_{ij}) can be computed easily from
 75 (B_{ij}) by

$$C_{ij} = \sum_{j=1}^N A_{ij} A_{ij} A_{ij}, \quad D_{ij} = \sum_{j=1}^N B_{ij} B_{ij} \quad (4)$$

76 3 GOVERNING EQUATIONS

77 For an Euler-Bernoulli beam theory, the displacement field is assumed to be as follow,

$$u_1 = u(x, t) + z \partial w / \partial x, \quad u_2 = 0, \quad u_3 = w(x, t) \quad (5)$$

78 where are the axial and transverse displacements. The only nonzero strain of the Euler-
 79 Bernoulli beam theory is [1],

$$\varepsilon_{xx} = \partial u / \partial x + z \partial^2 w / \partial x^2 \quad (6)$$

80 The equations for an Euler-Bernoulli beam theory are given by,

$$\partial N / \partial x + f = m_0 \partial^2 u / \partial t^2 - \partial^2 M / \partial x^2 + q(x) - \partial(\bar{N} \partial w / \partial x) / \partial x = m_0 \partial^2 w / \partial t^2 - m_2 \partial^4 w / \partial x^2 \partial t^2 \quad (7)$$

81 where $f(x)$ and $q(x)$ are the axial and transverse distributed forces. According to the nonlocal
 82 elasticity theory, the classic Hooke's law for a uniaxial stress state is given by,

$$\sigma - (e_0 a)^2 \partial^2 \sigma / \partial x^2 = E \varepsilon \quad (8)$$

83 where $\sigma(x)$ is the axial stress, e_0 is a beam constant and a is an internal characteristic length.
 84 The constitutive relation for a nonlocal Euler-Bernoulli beam theory is given by,

$$M - (e_0 a)^2 \partial^2 M / \partial x^2 = EI \partial^2 w / \partial x^2 \quad (9)$$

85 By performing the differentiation of this equation with respect to the variable x twice we
 86 obtain

$$\partial^2 M / \partial x^2 - (e_0 a)^2 \partial^4 M / \partial x^4 = \partial^2 (EI \partial^2 w / \partial x^2) / \partial x^2 \quad (10)$$

87 The equation of nonlocal Euler–Bernoulli beam theory now can be expressed in terms of
88 the displacements as,

$$\begin{aligned} & \partial^2 (-EI \partial^2 w / \partial x^2) / \partial x^2 + (e_0 a)^2 \partial^2 [\partial (\bar{N} \partial w / \partial x) / \partial x - q + m_0 \partial^2 w / \partial t^2 \\ & - m_2 \partial^4 w / \partial x^2 \partial t^2] \partial x^2 + q - \partial (\bar{N} \partial w / \partial x) / \partial x = m_0 \partial^2 w / \partial t^2 - m_2 \partial^4 w / \partial x^2 \partial t^2 \end{aligned} \quad (11)$$

89 Using the DQ-rules for the spatial derivatives, the DQ-analogs of the governing Eqs. (11)
90 become

$$\begin{aligned} & EI \left(\sum_{j=1}^N D_{ij} w_j \right) + 2 (I \partial E / \partial x + E \partial I / \partial x) \left(\sum_{j=1}^N C_{ij} w_j \right) + q(x_i) \cdot \\ & (I \partial^2 E / \partial x^2 + 2(\partial E / \partial x)(\partial I / \partial x) + E \partial^2 I / \partial x^2) \left(\sum_{j=1}^N B_{ij} w_j \right) + (e_0 a)^2 [-\partial^2 q(x_i) / \partial x^2] = 0. \end{aligned} \quad (12)$$

91 It should be mentioned that for $e_0 a = 0$, the above equation will reduce to the classical
92 Euler-Bernoulli beam theory. Two-types of boundary conditions are considered. These are,
93 Fully clamped, (at both ends)

$$W = 0 \partial W / \partial x = 0 \quad (13)$$

94 Simply supported, (at both ends)

$$W = 0 \partial^2 W / \partial x^2 = 0 \quad (14)$$

95 The discretized form of boundary condition can be obtained by,
96 Fully clamped, (at both ends)

$$W_i = 0, \quad \sum_{j=1}^N A_{ij} W_j = 0 \quad (15)$$

97 Simply supported,(at both ends)

$$W_i = 0, \quad \sum_{j=1}^N B_{ij} W_j = 0 \quad (16)$$

98 **4 NUMERICAL RESULTS**

99 Consider a tapered nano wire having a length L and bigger radius $R = r|_{x=0}$. The radius of
 100 nano wire is varying linearly according to $r=R-px$. In this section, on the basis of the above
 101 equations, different parameters such as length and radius of nano wire, nonlocal parameter
 102 and different boundary conditions are investigated. In these examples, a tapered nano wire is
 103 assumed to have a $80nm$ length and bigger radius $R = 10nm$, unless otherwise specified. In all
 104 of the examples, a tapered nano wire is subjected to sinusoidally mechanical loading defined
 105 as follow,

$$q = q_0 \sin(\pi x/L) \tag{17}$$

106 where q_0 is a constant parameter. In Table 1, the effects of nonlocal parameter on the deflec-
 107 tions of simply supported tapered nano wires subjected to sinusoidally mechanical loading are
 108 shown. One can see that with the increase of nonlocal parameter, the deflections will increase.
 109 The increase in the values of the deflections as the nonlocal parameter is varied is evident of
 110 its importance contribution to the mathematical model. It is also shown that the maximum
 111 deflection of tapered nano wire is not occurring at the middle of the wire, as it is expected.
 112 In Fig. 3, the deflections of simply supported tapered nano wires subjected to sinusoidally
 113 mechanical loading for different geometries are figured. The nonlocal parameter is assumed to
 114 be $1nm$. It can be seen that increasing the constant parameter p will increase the deflections of
 115 nano wire. It is important to state that increase the constant parameter p is equal to decrease
 the radius of nano wire.

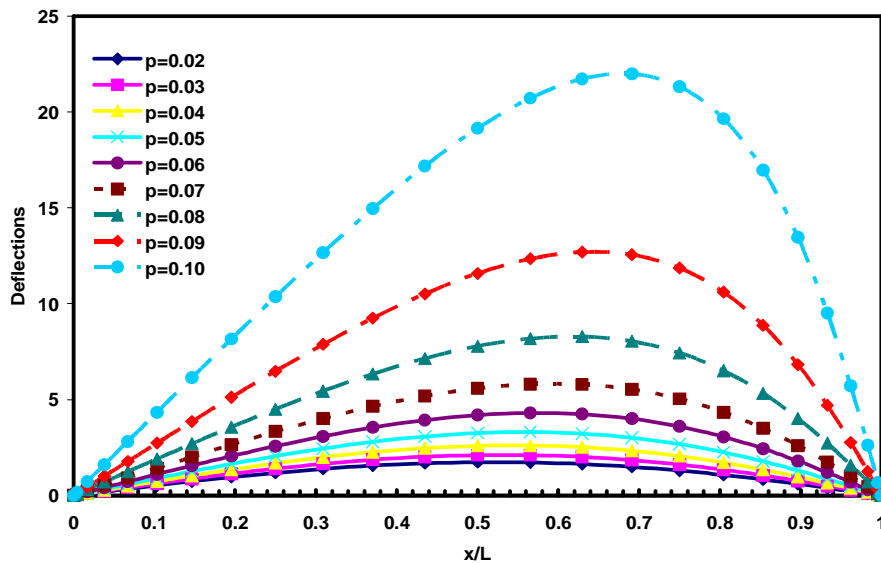


Figure 3 The deflections of simply supported tapered nano wires subjected to sinusoidally mechanical loading for different geometries $((e_0a)^2 = 1nm^2)$

116
117

In this figure, it is obviously shown that the maximum deflections shift to the right side

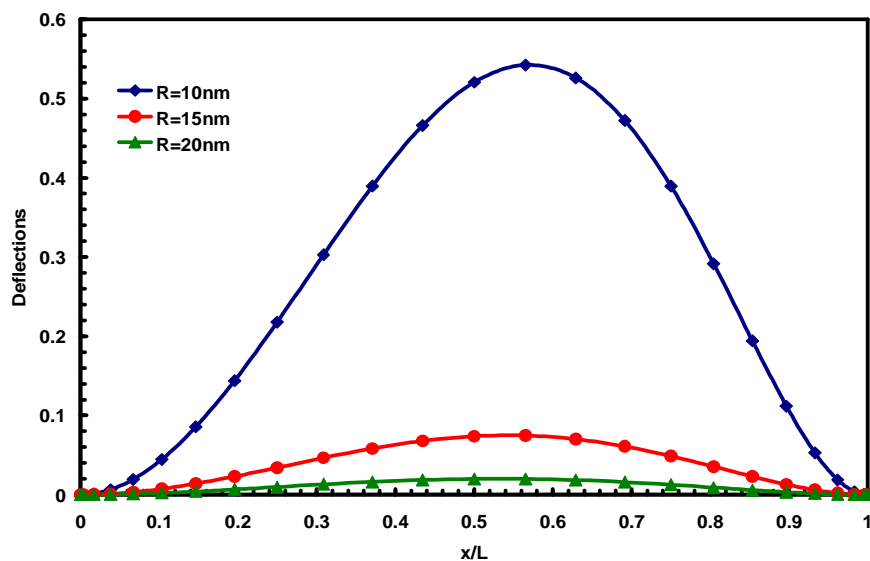


Figure 4 The effects of radius ($R = r|_{x=0}$) of fully clamped tapered nano wires on the deflections under sinusoidally mechanical loading ($(e_0a)^2 = 1nm^2, p = 0.05$)

118 of nano wire as the constant p increase. The influences of radius ($R = r|_{x=0}$) of fully clamped
 119 tapered nano wires on the deflections under sinusoidally mechanical loading are figured in Fig.
 120 4. The figure indicates that increase of radius R , leads to the decrease of the deflections of
 121 tapered nano wire. It is also shown that with less amount of parameter p and more amount
 122 of radius R , the results for tapered nano wires are close to the results for nano wires with
 123 constant cross section. In Fig. 5, the effects of length of fully clamped tapered nano wires are
 124 investigated. As it is expected, in order to decrease the deflections of tapered nano wires,
 125 one should decrease the length of them.

Table 1 The effects of nonlocal parameter on the deflections of simply supported tapered nano wires subjected to sinusoidally mechanical loading ($\rho=1$)

x/L	$(e_0a)^2(nm)^2$		
	0.1	1	10
0.0000	0.0000	0.0000	0.0000
0.0043	0.1376	0.1378	0.1397
0.0170	0.5481	0.5489	0.5565
0.0381	1.2243	1.2260	1.2430
0.0670	2.1536	2.1566	2.1865
0.1033	3.3178	3.3225	3.3685
0.1464	4.6918	4.6983	4.7635
0.1956	6.2422	6.2508	6.3374
0.2500	7.9251	7.9361	8.0461
0.3087	9.6844	9.6978	9.8322
0.3706	11.4483	11.4642	11.6230
0.4347	13.1275	13.1457	13.3279
0.5000	14.6139	14.6342	14.8370
0.5653	15.7816	15.8035	16.0225
0.6294	16.4927	16.5156	16.7444
0.6913	16.6095	16.6326	16.8630
0.7500	16.0165	16.0387	16.2610
0.8044	14.6523	14.6727	14.8760
0.8536	12.5501	12.5675	12.7417
0.8967	9.8752	9.8889	10.0260
0.9330	6.9368	6.9464	7.0427
0.9619	4.1442	4.1500	4.2075
0.9830	1.8999	1.9025	1.9289
0.9957	0.4802	0.4809	0.4875
1.0000	0.0000	0.0000	0.0000

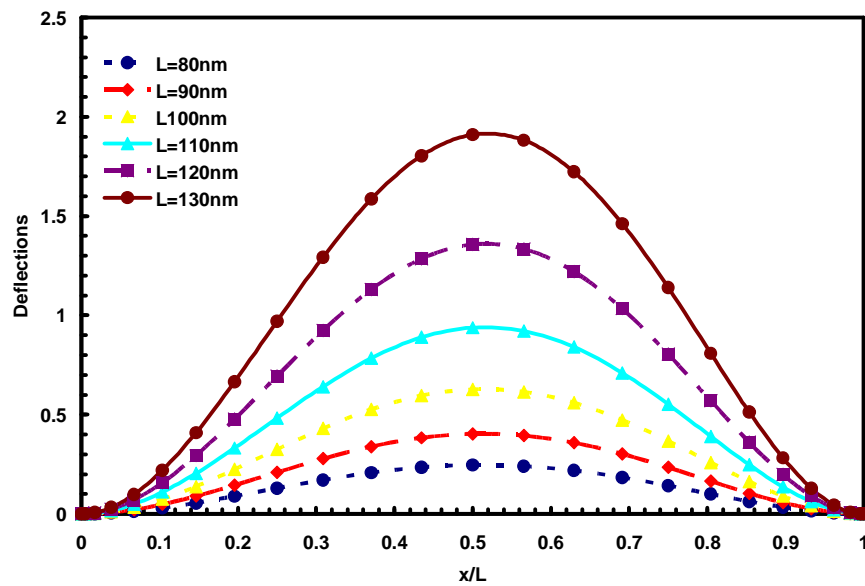


Figure 5 The effects of length of fully clamped tapered nano wires on the deflections under sinusoidally mechanical loading ($(e_0a)^2 = 1nm^2, \rho = 0.01$)

126 **5 CONCLUSION**

127 In this research, utilizing the nonlocal elasticity theory based on Euler-Bernoulli beam theory,
 128 the deflections of tapered nano wires with circular cross section have been obtained. The
 129 differential quadrature method was employed to convert the governing differential equations
 130 into a linear system. It was shown that with the increase of nonlocal parameter and length
 131 of tapered nano wires and with the decrease of radius of tapered nano wires, ($R = r|_{x=0}$) the
 132 deflections will increase.

133 **References**

134 [1] <http://www.amolf.nl/research/surface-photonics/highlights>.

135 [2] R. Aghababaei and J.N. Reddy. Nonlocal third-order shear deformation plate theory with application to bending
 136 and vibration of plates. *Journal of Sound and Vibration*, 326:277–289, 2009.

137 [3] R.E. Bellman and J. Casti. Differential quadrature and long term integration. *J Math Anal Appl*, 34:235–238, 1971.

138 [4] Y. Fu and P. Zhang. Buckling and vibration of coreshell nano wires with weak interfaces. *Mech. Re. Commun*,
 139 37:622–626, 2010.

140 [5] Y.G. Hu, K.M. Liew, Q. Wang, X.Q. He, and B.I. Yakobson. Nonlocal shell model for elastic wave propagation in
 141 single- and double-walled carbon nanotubes. *J. Mech. Phys. Solids*, 56:3475–3485, 2008.

142 [6] L.Y. Jiang and Z. Yan. Timoshenko beam model for static bending of nanowires with surface effects. *Physica E:
 143 Low-dimensional Systems and Nanostructures*, 42:2274–2279, 2010.

144 [7] E. Jomehzadeh and A.R. Saidi. Decoupling the nonlocal elasticity equations for three dimensional vibration analysis
 145 of nano-plates. *Composite Structures*, 93(2):1015–20, 2010.

146 [8] L.L. Ke, Y. Xiang, J. Yang, and S. Kitipornchai. Nonlinear free vibration of embedded double-walled carbon
 147 nanotubes based on nonlocal timoshenko beam theory. *Comput Mater Sci*, 47:409–417, 2009.

148 [9] K. Kiani. Application of nonlocal beam models to double-walled carbon nanotubes under a moving nanoparticle.
 149 part i: theoretical formulations. *Acta Mech*, 2010. DOI 10.1007/s00707-010-0362-1.

150 [10] K. Kiani. Free longitudinal vibration of tapered nanowires in the context of nonlocal continuum theory via a
 151 perturbation technique. *Physica E*, 43:387–397, 2010.

152 [11] P. Malekzadeh, A.R. Setoodeh, and A. Alibeygi Beni. Small scale effect on the free vibration of orthotropic arbitrary
 153 straight-sided quadrilateral nanoplates. *Composite Structures*, 2011. doi: 10.1016/j.compstruct.2011.01.008.

154 [12] T. Murmu and S. Adhikari. Nonlocal vibration of carbon nanotubes with attached buckyballs at tip. *Mech. Re.
 155 Commun*, 2011. doi:10.1016/j.mechrescom.2010.11.004.

156 [13] K.B. Mustapha and Z.W. Zhong. Free transverse vibration of an axially loaded non-prismatic single-walled carbon
 157 nanotube embedded in a two-parameter elastic medium. *Comput Mater Sci*, 50:742–751, 2010.

158 [14] Ö. Civalek, C. Demir, and B. Akgöz. Free vibration and bending analyses of cantilever microtubules based on
 159 nonlocal continuum model. *Math. Comput. Appl*, 15:289–298, 2010.

160 [15] S.C. Pradhan. Buckling of single layer graphene sheet based on nonlocal elasticity and higher order shear deformation
 161 theory. *Physics Letters A*, 373:4182–8, 2009.

162 [16] S.C. Pradhan and A. Kumar. Vibration analysis of orthotropic graphene sheets using nonlocal elasticity theory and
 163 differential quadrature method. *Composite Structures*, 93:774–779, 2011.

164 [17] J.R. Quan and C.T. Chang. New insights in solving distributed system equations by the quadrature method:
 165 Analysis. *Comput. Chem. Eng*, 13:779–788, 1989.

166 [18] J.N. Reddy. Nonlocal theories for bending, buckling and vibration of beams. *International Journal of Engineering
 167 Science*, 45:288–307, 2007.

- 168 [19] C. Shu and B.E. Richards. Application of generalized differential quadrature to solve two-dimensional incompressible
169 navierstokes equations. *International Journal of Numerical Methods in Fluids*, 15:791–798, 1992.
- 170 [20] F. Song and G.L. Huang. Modeling of surface stress effects on bending behavior of nano wires: Incremental defor-
171 mation theory. *Physics Letters A*, 373:3969–3973, 2009.
- 172 [21] C.M. Wang, Y.Y. Zhang, S.S. Ramesh, and S. Kitipornchai. Buckling analysis of micro- and nano-rods/tubes based
173 on nonlocal timoshenko beam theory. *J Phys D Appl Phys*, 39:3904–3909, 2006.
- 174 [22] L. Wang. Vibration and instability analysis of tubular nano- and micro-beams conveying fluid using nonlocal elastic
175 theory. *Physica E*, 41:1835–1840, 2009.
- 176 [23] Q. Wang and K.M. Liew. Application of nonlocal continuum mechanics to static analysis of micro- and nano-
177 structures. *Physics Letters A*, 363:236–242, 2007.
- 178 [24] J. Yang, L.L. Ke, and S. Kitipornchai. Nonlinear free vibration of single-walled carbon nanotubes using nonlocal
179 timoshenko beam theory. *Physica E*, 42:1727–1735, 2010.
- 180 [25] Y.Q. Zhang, G.R. Liu, and X.Y. Xie. Free transverse vibrations of double-walled carbon nanotubes using a theory
181 of nonlocal elasticity. *Nuclear engineering Design*, 71:1–7, 2005. 195404.