

LETTER TO THE EDITOR

Landscape fragmentation and Ebola outbreaks

Gabriel Zorello Laporta/+

Faculdade de Medicina, Universidade de São Paulo,
São Paulo, SP, Brasil

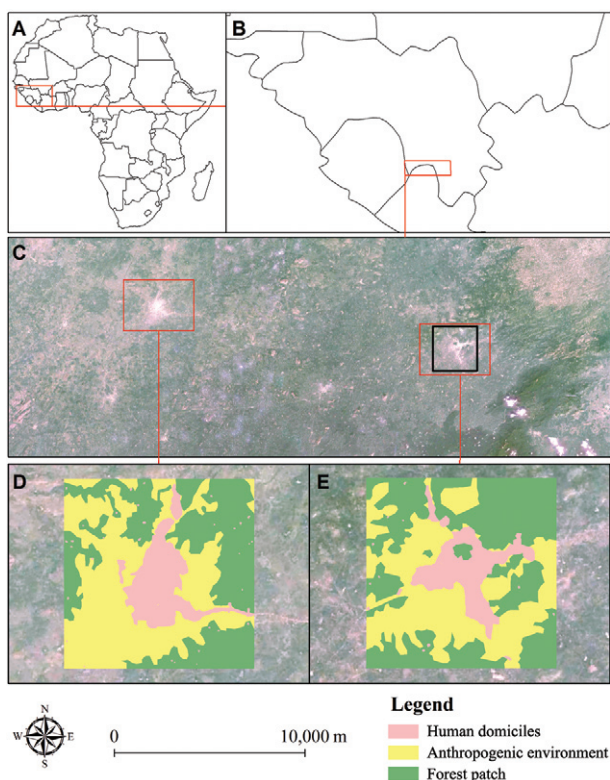
The 2014 Ebola outbreak started in early-March, Guinea (Baize et al. 2014). Following, the outbreak spread into Liberia in March, Sierra Leone in May and Nigeria in July. Today every city in the affected regions embedded in the West Africa is at risk (Pigott et al. 2014). Hypotheses have been raised about possible mechanisms that made dynamics of Ebola transmission exacerbated (Bausch & Schwarz 2014). The coupled pathogen-reservoir system has evolved from a zoonotic-only transmission, involving bats and non-human primates, into a

human-human transmission mode dynamics (Gire et al. 2014, Vogel 2014). This could be possible under a structural property of the landscape in where epicenter of the Ebola outbreak originated.

The cities of Guéckédou and Macenta (Guinea) are fragmented landscapes containing anthropogenic environment, i.e., urban plus rural areas and forest patches (Figure). Anthropogenic environment represents 50-60% of the total landscape area (100 km²). Edge density between anthropogenic environment and forest patches is 10-12 times higher than landscapes without fragmentation, which makes possible human density increase between anthropogenic and forest habitats. Landscape fragmentation can have two roles in the Ebola transmission dynamics: (i) serve as epidemiological corridors in where pathogen-carrier reservoirs can maintain and spread zoonotic cycles and (ii) make a frontier of contact between forest fringes and anthropogenic environment. The former mechanism can be responsible to increase variability of genetic pools of the pathogen within the zoonotic Ebola transmission cycle, whereas the latter is the cause of contact between humans and the wild pathogen. These mechanisms may ultimately be linked to the mutant Ebola virus that infect humans and is responsible for the 2014 Ebola outbreak. Could therefore these mechanisms be inferred as determinants of Ebola outbreaks in the future?

REFERENCES

- Baize S, Pannetier D, Oestereich L, Rieger T, Koivogui L, Magassouba N, Soropogui B, Sow MS, Keita S, Clerck HD, Tiffany A, Dominguez G, Loua M, Traoré A, Kolié M, Malano ER, Heleze E, Bocquin A, Mély S, Raoul H, Caro V, Cadar D, Gabriel M, Pahlmann M, Tappe D, Schmidt-Chanasit J, Impouma B, Diallo AK, Formenty P, Herp MV, Gunther S 2014. Emergence of Zaire Ebola virus disease in Guinea. *N Engl J Med* 371: 1418-1425.
- Bausch DG, Schwarz L 2014. Outbreak of Ebola virus disease in Guinea: where ecology meets economy. *PLoS Negl Trop Dis* 8: e3056.
- Gire SK, Goba A, Andersen KG, Sealfon RSG, Park DJ, Kanneh L, Jalloh S, Momoh M, Fullah M, Dudas G, Wohl S, Moses LM, Yozwiak NL, Winnicki S, Matranga CB, Malboeuf CM, Qu J, Gladden AD, Schaffner SF, Yang X, Jian PP, Nekoui M, Colubri A, Coomber MR, Fonnies M, Moigboi A, Gbakie M, Kamara FK, Tucker V, Konuwa E, Saffa S, Sellu J, Jalloh AA, Kovoma A, Koninga J, Mustapha I, Kargbo K, Foday M, Yillah M, Kanneh F, Robert W, Masally JLB, Chapman SB, Bochicchio J, Murphy C, Nusbaum C, Young S, Birren BW, Grant DS, Scheiffelin JS, Lander ES, Hapji C, Gevao SM, Gnirke A, Rambaut A, Garry RF, Khan SH, Sabeti PC 2014. Genomic surveillance elucidates Ebola virus origin and transmission during the 2014 outbreak. *Science* 345: 1369-1372.
- Pigott DM, Golding N, Mylne A, Huang Z, Henry AJ, Weiss DJ, Brady OJ, Kraemer MUG, Smith DL, Moyes CL, Bhatt S, Gething PW, Horby PW, Bogoch II, Brownstein JS, Mearu SR, Tatem AJ, Khan K, Hay SI 2014. Mapping the zoonotic niche of Ebola virus disease in Africa. *eLife* 3: e04395.
- Vogel G 2014. Are bats spreading Ebola across sub-Saharan Africa? *Science* 344: 140.



Epicenter of the 2014 Ebola outbreak. A: affected region in the West Africa; B: area of emergence of a new Ebola virus strain in South Guinea; C: satellite image showing initial locations of the outbreak of Ebola virus disease; D: Guéckédou landscape with forest patches, anthropogenic environment and human domiciles; E: Macenta landscape with forest patches, anthropogenic environment and human domiciles.

doi: 10.1590/0074-0276140417

+ Corresponding author: gabriel.laporta@dim.fm.usp.br

Received 5 November 2014

Accepted 13 November 2014