

Study of sand fly fauna in an endemic area of American cutaneous leishmaniasis and canine visceral leishmaniasis in the municipality of Espírito Santo do Pinhal, São Paulo, Brazil

Fernanda Elisa Colla-Jacques^{1/+}, Cláudio Casanova², Ângelo Pires do Prado¹

¹Departamento de Biologia Animal, Universidade Estadual de Campinas, Campinas, SP, Brasil ²Superintendência de Controle de Endemias, Secretaria de Estado da Saúde, São Paulo, SP, Brasil

Canine American visceral leishmaniasis and American cutaneous leishmaniasis (ACL) cases have been recorded in Espírito Santo do Pinhal. The aim of this study was to gather knowledge of the sand fly community and its population ecology within the municipality. Captures were made weekly over a period of 15 months in the urban, periurban and rural areas of the municipality, using automatic light traps. A total of 5,562 sand flies were collected, comprising 17 species. The most abundant species were Nyssomyia whitmani and Pintomyia pessoai in the rural area, Lutzomyia longipalpis and Ny. whitmani in the periurban area and Lu. longipalpis in the urban area. The highest species richness and greatest index species diversity were found in the rural area. The similarity index showed that urban and periurban areas were most alike. Lu. longipalpis was found in great numbers during both dry and humid periods. The presence of dogs infected with Leishmania infantum chagasi in the urban area indicates a high risk for the establishment of the disease in the region. A high abundance of Ny. whitmani and Pi. pessoai in the rural and periurban areas indicates the possibility of new cases of ACL occurring in and spreading to the periurban area of Espírito Santo do Pinhal.

Key words: leishmaniasis - sand fly - ecology - *Lutzomyia*

Although leishmaniasis cycles involve several species of *Leishmania*, mammalian hosts and sand fly vectors, their peculiar epidemiology in the New World seems to follow a basic pattern, in which the size of the area occupied by the vector, its abundance, dispersion pattern and feeding behaviour are considered determinants in the link between human and enzootic cycles (Shaw & Lainson 1987, Lainson 1989). Knowledge of the sand fly community, its population dynamics and its environmental distribution is essential in understanding the role of different species in the transmission cycles of *Leishmania* and in developing more efficient control strategies.

In Brazil, over 229 species of sand flies have been documented, with 19 considered to be either possible or proven vectors of human-infecting *Leishmania* (Rangel & Lainson 2003, Shimabukuro 2007). In state of São Paulo (SP), 66 species are present (Galati 2003, Shimabukuro 2007), of which seven are considered to be epidemiologically important. *Nyssomyia intermedia* (Lutz & Neiva 1912), *Nyssomyia neivai* (Pinto 1926), *Nyssomyia whitmani* (Antunes & Coutinho 1939), *Migonemyia migonei* (França 1920), *Pintomyia pessoai* (Coutinho & Barreto 1940) and *Pintomyia fischeri* (Pinto 1926) have been indicated as probable vectors of *Leishmania* (*Viania*) *braziliensis*, the main causative agent of American cutaneous leishmaniasis (ACL) in the state, due to their

anthropophilic behaviour and high abundance in localities with human cases of disease, among other ecological aspects (Gomes et al. 1989, Gomes 1994, Tolezano 1994, Casanova et al. 1995, 2009, Galati et al. 1996, Katz 1997, Mayo et al. 1998, Andrade Filho et al. 2007). In the Campinas region, 618 cases of ACL have been reported since 1998 and 16 of those were in Espírito Santo do Pinhal. Preliminary studies showed that the six species mentioned above, except *Ny. intermedia*, have been identified in the rural area of Espírito Santo do Pinhal and that some of these species have also been found in the urban and periurban areas (unpublished observations). Understanding the environmental distribution of these populations may help to identify and monitor the areas most at risk from ACL.

Lutzomyia longipalpis (Lutz & Neiva 1912) is the main vector of *Leishmania infantum chagasi* (Cunha & Chagas 1937), the American visceral leishmaniasis (AVL) causative agent and is now present in all Brazilian Regions (Souza et al. 2009). Its first occurrence within an urban area of SP was in Araçatuba in 1997 (Costa et al. 1997) and, since then, a clear expansion of its distribution area has been recorded. At present, this species has been registered in the urban area of 107 municipalities, with Espírito Santo do Pinhal being the only one in the northeast area of SP. The high abundance of the vector, coupled with canine transmission, has been indicated as a precursor to the occurrence of autochthonous human cases in the urban area of SP. From 1999-2009, 1,539 human cases, with 134 resulting in death, were reported within the state. *Lu. longipalpis* was first collected in the rural area of Espírito Santo do Pinhal in 1994 and in the urban area in 2000 (Casanova et al. 2006). So far, only

Financial support: SUCEN, CNPq (based on MSc dissertation)

+ Corresponding author: fernandacolla@gmail.com

Received 3 November 2009

Accepted 5 February 2010

canine cases of AVL have been recorded in the urban regions (SES/SUCEN/CCD 2008). The *Lu. longipalpis* population of Espírito Santo do Pinhal is characterised by a sex pheromone that differs from that found in populations from the western region of SP (Casanova et al. 2006). Identifying population parameters that indicate vector capacity is essential to understanding the different epidemiological patterns of AVL within the state.

This study aimed to characterise the sand fly communities from different areas (rural, periurban and urban) of Espírito Santo do Pinhal and record the monthly population variations of the most frequent species.

MATERIALS AND METHODS

Study area - The municipality of Espírito Santo do Pinhal (22°06'S 46°26'W) is located in the northeast area of SP, 200 km from the capital (Fig. 1). It has an area of 391.4 km² and approximately 45,000 inhabitants. According to Köppen's climate classification, the region is identified as Cwa (humid subtropical climate with dry winter) (CEPAGRI 2009). The rural area is characteristically mountainous with rocky outcrops, comprising large areas used for growing coffee and smaller areas used for subsistence farming.

The municipality elevation varies from 800-1.200 m above sea level. As a result, the region can be divided into two distinct climate types: altitude subtropical climate, found in mountainous areas near the state of Minas Gerais boundary (900-1.200 m high), and where the average temperature varies from 16-18°C, and tropical climate, located near the Mogi Guaçu River depression, which is the lowest area of the district (800-900 m high) and where the summers are hot and the average temperature is around 23°C.

Sand fly collection - Over the course of 15 months, from November 2006-January 2008, weekly collections using CDC traps were carried out from 6 pm-7 am in properties located in the urban, periurban and rural areas of the municipality. A total of 17 properties were studied: four rural, five periurban and eight urban. Although the collection was performed weekly, the data is presented in 15 d increments, with six samples from each area considered for each period.

The flies were taken to the Superintendência de Controle de Endemias laboratory, in Mogi Guaçu-SP, where they were processed according to Forattini (1973) and identified using Galati's (2003) classifications. Some of these specimens were added to the entomological collection of the Departamento de Epidemiologia of the Faculdade de Saude Pública, Universidade de São Paulo.

Analysis - The frequency of each species among the collected sand flies was calculated for each of the three studied areas. The male-to-female ratio was determined for the total number of sand flies captured and for each species individually. The diversity was obtained using species richness and Margalef's Index (D_M) and the similarity between the different areas was calculated by Morisita's Index (S_M) (Brower & Zar 1984, Magurran 1988, Service 1993).

The estimates of evenness were obtained using Pielou's index (Magurran 1988). The standardised index of species abundance (SISA) was calculated according to Roberts and Hsi (1979) and the species constancy was calculated by the constancy coefficient (Dajoz 1973). For the most abundant species, the monthly distribution was analysed relative to the 10 d soil water balance (Thornthwaite & Mather 1955). Climate related data was provided by CIIAGRO (2009).

RESULTS

At the end of the 15 month study period, 5,562 sand flies were collected, comprising of four subtribes (Brumptomyiina, Sergentomyiina, Lutzomyiina and Psychodopygina), 10 genus and 17 species: *Lu. longipalpis*, *Ny. whitmani*, *Ny. neivai*, *Evandromyia lenti* (Mangabeira 1938), *Evandromyia cortezezzii* (Brethes 1923), *Evandromyia termitophila* (Martins, Falcão & Silva 1964), *Evandromyia edwardsi* (Mangabeira 1941), *Mg. migonei*, *Pi. fischeri*, *Pi. pessoai*, *Pintomyia monticola*

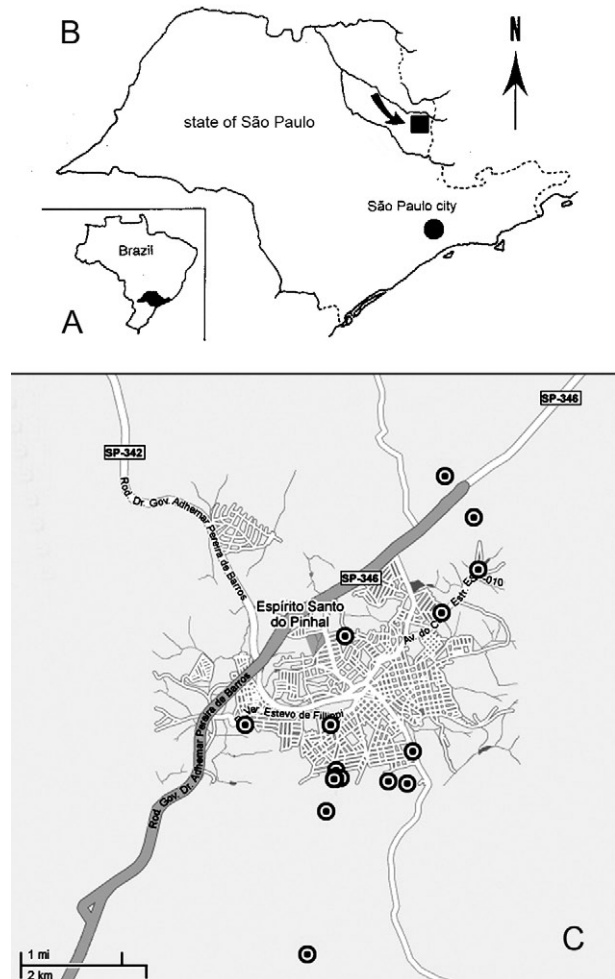


Fig. 1: study area: A: Brazil; B: state of São Paulo; C: municipality of Espírito Santo do Pinhal.

(Costa Lima 1932), *Sciopemyia sordellii* (Shannon & Del Ponte 1927), *Micropygomyia quinquefer* (Dyar 1929), *Psathyromyia aragai* (Costa Lima 1932), *Expapillata firmatoi* (Barretto, Martins & Pellegrino 1956), *Brumptomyia cunhai* (Mangabeira 1942) and *Brumptomyia avellari* (Costa Lima 1932) (Table I).

Of the four subtribes found in the study area, Lutzomyiina was both the most frequent, accounting for 62.8% of all sand flies and the most diverse, represented by six genera. The male-to-female ratio was 2.14, varying from 5.75 for *Lu. longipalpis* to 0.13 for *Mi. quinquefer*. In the case of five species, sand flies of both sexes were not captured: no males for *Ev. termitophila*, *Ev. edwardsi* and *Pi. monticola*, and no females for *Br. cunhai* and *Br. avellari*.

Seventeen species were found in Espírito Santo do Pinhal, with representatives from each species collected within the first two months of the study. The rural area showed the highest richness, with all 17 species found there. The richness encompassed 13 species in the periurban area and in the urban area, eight (Fig. 2).

The greatest number of sand flies was captured in rural area. A total of 2,594 individuals (46.6%) were present in the rural area, followed by 2,316 (41.6%) in the periurban area and 652 (11.7%) in the urban area. *Ny. whitmani* and *Lu. longipalpis* were the species with the highest number of collected sand flies, with 1,999 (35.9%) and 1,828 (32.9%) individuals, respectively. Other species, such as *Pi. pessoai* (14.9%), *Mg. migonei* (7.4%) and *Ev. lenti* (5.1%) were also collected in high numbers in the three areas (Table I).

When applied to the municipality as a whole, the SISA showed that *Ny. whitmani* and *Lu. longipalpis* were the most abundant species with values of 0.86 and 0.84, respectively (Table II). In the rural area, *Ny. whitmani* was the predominant species, with 1,127 flies (43.5%), followed by *Pi. pessoai*, with 744 (28.7%), and *Mg. migonei*, with 347 (13.4%) (Table I). Their SISA values were 0.98, 0.88 and 0.74, respectively. In the periurban area, *Lu. longipalpis* was the predominant species, with 1,209 flies (52.2%), followed by *Ny. whitmani* (838 flies, 36.2%), *Pi. pessoai* (79, 3.41%) and *Mg. migonei* (60, 2.59%). Their SISA values were 0.77, 0.73,

0.46 and 0.41, respectively. As in the periurban area, *Lu. longipalpis* was the predominant species in the urban area, with 476 individuals (73%) and a SISA value of 0.98. The next-most frequently found species in the urban area were *Ev. lenti*, with 114 sand flies (17.5%), *Ny. whitmani*, with 34 (5.21%) and *Ev. cortelezzii*, with 16 (2.45%). Their SISA values were 0.58, 0.50 and 0.29, respectively (Table II).

The greatest numbers of *Ny. whitmani* flies were collected in February 2007, and the smallest in June and July of the same year (Fig. 3A). These months corresponded to the period after the water balance surplus and to the period before the long water deficit, respectively (Fig. 4). Both *Pi. pessoai* and *Mg. migonei* showed the same fluctuation pattern (Fig. 3B, C). *Lu. longipalpis* had an unusual pattern compared to those of the other species, having large population fluctuations throughout the study that alternated between high and low abundances; however, peaks in its population were still observed, occurring in April and November of 2007 (Fig. 3D).

The seasonal distribution of the species found in Espírito Santo do Pinhal can also be assessed using the constancy coefficient, which classifies each species according to the number of collections in which it is present. *Ny. whitmani*, *Mg. migonei* and *Pi. pessoai* were constant species in the rural areas. Only *Lu. longipalpis*, however, could be considered a constant species in both the urban and periurban areas (Table III).

The number of species and the number of sand flies collected in each area were used to calculate the D_M diversity index. Consistent with species richness, the D_M diversity index indicated that the rural area was the most diverse ($D_M = 2.04$) and the urban was the least diverse ($D_M = 1.08$), with the diversity of the periurban area in the middle ($D_M = 1.55$). The evenness indices were 0.53 for the rural area, 0.45 for the periurban area and 0.42 for the urban area.

When compared to each other using S_M similarity coefficient, the urban and periurban areas were found to be more similar to each other ($S_M = 0.83$) than either was to the rural area. The similarity between the periurban and the rural areas was 0.57 and 0.17 between the urban and rural areas.

DISCUSSION

Each of the 17 species collected in Espírito Santo do Pinhal had previously been recorded in SP (Galati 2003, Shimabukuro 2007); however, the species richness in this study represents a much more diverse fauna when compared to previous works carried out in the study area (Gomes et al. 1989, Rangel & Vido 1997, Casanova et al. 2009). In addition, these findings, in which *Ny. whitmani* and *Lu. longipalpis* were the most abundant species, contrast with those of previous studies, which identified *Ny. neivai* as the predominant species in the Mogi Guaçu River drainage basin (Gomes et al. 1989, Casanova et al. 2005, 2009).

Lutzomyiina was the most abundant subtribe identified in this study, whereas Psychodopygina was the most abundant subtribe found in previous records (Silva et al.

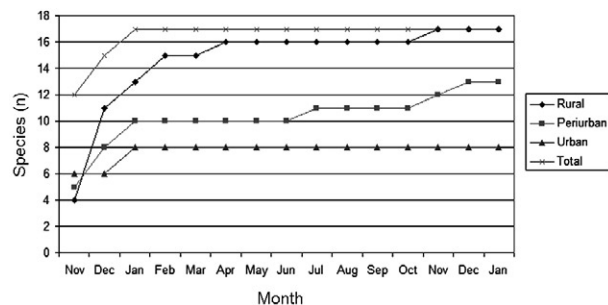


Fig. 2: number of species collected in Espírito Santo do Pinhal from November 2006-January 2008.

TABLE I

Male and female sand flies captured in municipality of Espírito Santo do Pinhal, state of São Paulo and their frequencies per area from November 2006-January 2008

Subtribe/species	Rural			Periruban			Urban			Total		
	M	F	%	M	F	%	M	F	%	M	F	%
Lutzomyiina												
<i>Lutzomyia longipalpis</i>	126	17	5.51	1,035	174	52.20	396	80	73.01	1,557	271	32.87
<i>Pintomyia fischeri</i>	28	25	2.04	7	3	0.43	0	0	0.00	35	28	1.13
<i>Pintomyia pessoai</i>	526	218	28.68	47	32	3.41	3	0	0.46	576	250	14.85
<i>Pintomyia monticola</i>	0	1	0.04	0	1	0.04	0	0	0.00	0	2	0.04
<i>Evandromyia lenti</i>	55	59	4.39	29	25	2.33	44	70	17.48	128	154	5.07
<i>Evandromyia cortelezzii</i>	14	11	0.96	4	12	0.69	7	9	2.45	25	32	1.02
<i>Evandromyia termitophila</i>	0	5	0.19	0	0	0.00	0	0	0.00	0	5	0.09
<i>Evandromyia edwardsi</i>	0	2	0.08	0	0	0.00	0	0	0.00	0	2	0.04
<i>Migonemyia migonei</i>	203	144	13.38	33	27	2.59	2	2	0.61	238	173	7.39
<i>Expapillata firmatoii</i>	5	6	0.42	0	1	0.04	0	0	0.00	5	7	0.22
<i>Sciopemyia sordellii</i>	0	2	0.08	0	1	0.04	2	1	0.46	2	4	0.11
Psychodopygina												
<i>Nyssomyia whitmani</i>	641	486	43.45	546	292	36.18	18	16	5.21	1,205	794	35.94
<i>Nyssomyia neivai</i>	2	0	0.08	0	5	0.22	0	0	0.00	2	5	0.13
<i>Psathyromyia aragaoi</i>	4	5	0.35	0	0	0.00	0	0	0.00	4	5	0.16
Sergentomyiina												
<i>Micropygomyia quinquefer</i>	0	5	0.19	4	34	1.64	1	1	0.31	5	40	0.81
Brumptomyiina												
<i>Brumptomyia cunhai</i>	3	0	0.12	0	0	0.00	0	0	0.00	3	0	0.05
<i>Brumptomyia avellari</i>	1	0	0.04	4	0	0.17	0	0	0.00	5	0	0.09
Total	1,608	986		1,709	607		473	179		3,790	1,772	

F: female; M: male.

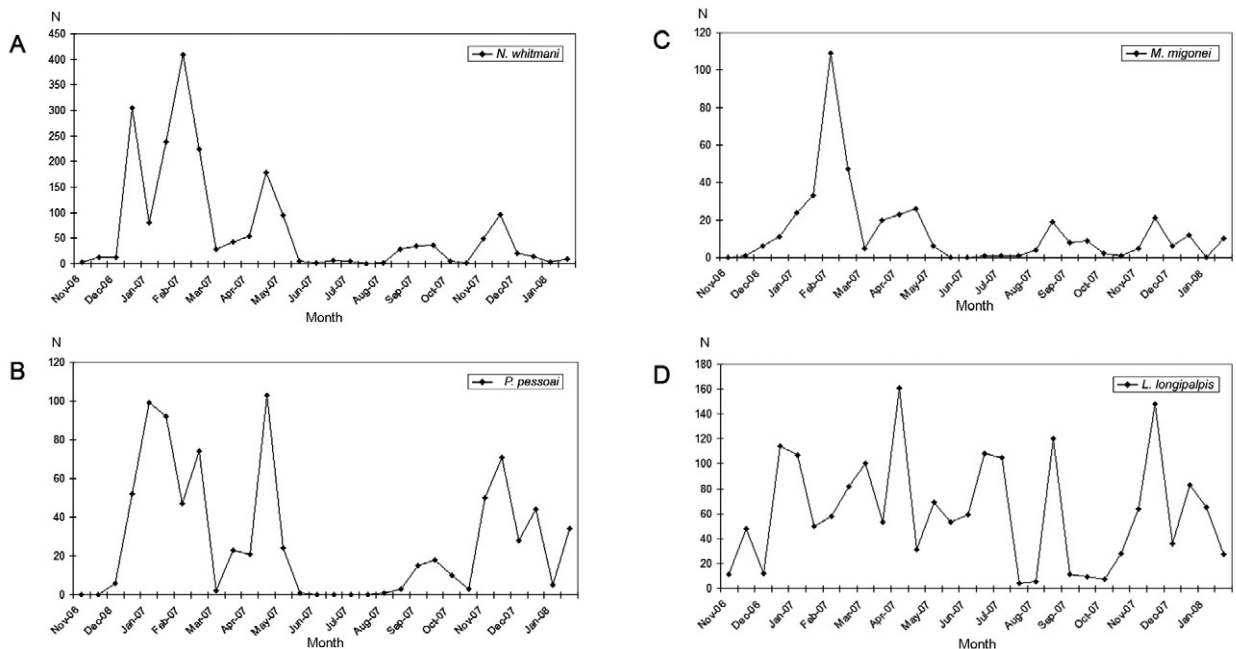


Fig. 3: fortnightly distribution of *Nyssomyia whitmani* (A), *Pintomyia pessoai* (B), *Migonemyia migonei* (C) and *Lutzomyia longipalpis* (D) in Espírito Santo do Pinhal from November 2006-January 2008.

TABLE II

Standardized index of species abundance for sand flies collected in the rural, periurban and urban areas and the total, in Espírito Santo do Pinhal, from November 2006-January 2008

Species	Rural		Periurban		Urban		Total	
	SISA	Position	SISA	Position	SISA	Position	SISA	Position
<i>Lutzomyia longipalpis</i>	0.44	7th	0.77	1st	0.98	1st	0.83	2nd
<i>Nyssomyia whitmani</i>	0.98	1st	0.73	3rd	0.50	3rd	0.86	1st
<i>Evandromyia lenti</i>	0.52	6th	0.68	4th	0.58	2nd	0.71	3rd
<i>Evandromyia cortelezzii</i>	0.63	4th	0.75	2nd	0.29	4th	0.65	4th
<i>Migonemyia migonei</i>	0.74	3rd	0.41	6th	0.19	5th	0.55	6th
<i>Pintomyia fischeri</i>	0.60	5th	0.10	9th	-	-	0.33	7th
<i>Pintomyia pessoai</i>	0.88	2nd	0.46	5th	0.11	7th	0.57	5th
<i>Sciopemyia sordellii</i>	0.13	11th	0.02	11th	0.15	6th	0.33	7th
<i>Micropygomyia quinquefer</i>	0.22	9th	0.13	8th	0.09	8th	0.33	7th
<i>Psathyromyia aragaoi</i>	0.16	10th	-	-	-	-	0.22	10th
<i>Expapillata firmatoi</i>	0.37	8th	0.02	11th	-	-	0.26	8th
<i>Brumptomyia cunhai</i>	0.12	12th	-	-	-	-	0.21	11th
<i>Nyssomyia neivai</i>	0.04	14th	0.07	10th	-	-	0.21	11th
<i>Evandromyia termitophila</i>	0.12	12th	-	-	-	-	0.21	11th
<i>Evandromyia edwardsi</i>	0.10	13th	-	-	-	-	0.21	11th
<i>Brumptomyia avellari</i>	0.02	15th	0.19	7th	-	-	0.24	9th
<i>Pintomyia monticola</i>	0.02	15th	0.02	11th	-	-	0.20	12th

SISA: standardised index of species abundance.

TABLE III

Species classification according to their constancy during the collections carried out in Espírito Santo do Pinhal, from November 2006-January 2008

Species	Rural	Periurban	Urban	Total
<i>Lutzomyia longipalpis</i>	y	x	x	x
<i>Nyssomyia whitmani</i>	x	y	z	x
<i>Evandromyia lenti</i>	y	y	y	x
<i>Evandromyia cortelezzii</i>	z	z	z	y
<i>Migonemyia migonei</i>	x	y	z	x
<i>Pintomyia fischeri</i>	y	z	-	y
<i>Pintomyia pessoai</i>	x	y	z	x
<i>Sciopemyia sordellii</i>	z	z	z	z
<i>Micropygomyia quinquefer</i>	z	z	z	y
<i>Psathyromyia aragaoi</i>	z	-	-	z
<i>Expapillata firmatoi</i>	z	z	-	z
<i>Brumptomyia cunhai</i>	z	-	-	z
<i>Nyssomyia neivai</i>	z	z	-	z
<i>Evandromyia termitophila</i>	z	-	-	z
<i>Evandromyia edwardsi</i>	z	-	-	z
<i>Brumptomyia avellari</i>	z	z	-	z
<i>Pintomyia monticola</i>	z	z	-	z

x: species present in more than 50% of the collections; y: species found in 25-50% of the collections; z: species found in less than 25% of the collections.

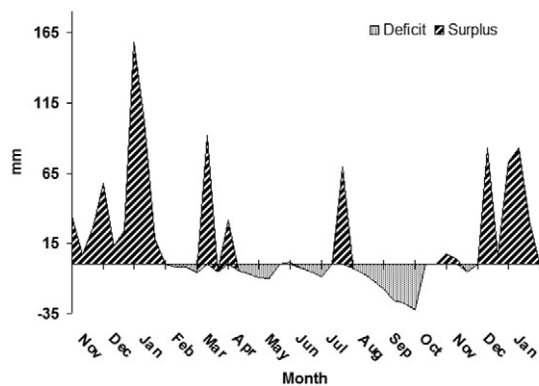


Fig. 4: 10 d soil water balance in Espirito Santo do Pinhal from November 2006-January 2008.

2008). The higher ratio of males to females has been observed before, mainly in areas where *Lu. longipalpis* is abundant (Oliveira et al. 2003, Galati et al. 2006, Resende et al. 2006). Gomes and Galati (1987) established a correlation between the number of male flies and a strategy to assure fecundation.

The rural area encompassed the greatest species richness and contained the largest number of sand flies in comparison to the other areas, which was expected given that there are more breeding sites and a greater ecotop diversity. Because it does not consider the number of sand flies collected, species richness does not provide an accurate description of the community in each area (Brower & Zar 1984, Magurran 1988). The accumulated number of species shown relative to time, however, can be used as an indicator of the moment when the richness of an area was reached. This information can be useful in programming activities for the entomological control of a species that has epidemiological importance. In the urban area, the point of species richness was reached within the first two months of collections. In the rural and periurban areas, the curve took longer to stabilise, as new species were added during the last months of collection. Although usually underestimated, a one-year collection period represents a good sample for species richness in Espirito Santo do Pinhal.

The predominance of *Ny. whitmani* and its abundance in the periurban area agree with other studies that indicated that this species is in the process of adapting to modified environments (Brazil et al. 1991, Azevedo et al. 1996). Of note, this species is considered the main vector of *L. (V.) braziliensis* in several parts of Brazil (Mayrink et al. 1979, Carvalho et al. 2008). The high abundance of *Ny. whitmani* in February 2007 corresponded to the period immediately after a peak in the water supply and prior to the beginning of a long water deficit.

Vector population fluctuation is highly influenced by environmental conditions. Once adult population size reflects the outcome of birth rates and mortality in the immature stages, a correlation pattern between weather-related factors and adult monthly frequency is not always

easily reached. Biotic and abiotic components of mortality that define the fluctuation or population regulation (Service 1993, Begon et al. 1996) must work differently for the early and adult sand fly stages, because they occupy different ecological niches. The combined effects of rainfall, air temperature, evapotranspiration and soil water balance likely influence the quality of the breeding habitats, consequently determining the fluctuations in the adult sand fly population (Rutledge & Ellenwood 1975, Morrison et al. 1995, Ferro et al. 1997, Casanova et al. 2009).

Periods of moderate water surplus seem to be favourable for a population increase of the four most abundant species in Espirito Santo do Pinhal. In contrast, periods of high water surplus, even if short, seem to negatively affect those populations. The same effect occurs when there is a continuous water deficit, such as the one registered from the end of April 2007-October 2007. However, the short period of water surplus in July, during the dry season, seemed to create favourable conditions for a quick increase of the population. The fact that *Lu. longipalpis* was found in great numbers during both dry and humid periods can be attributed to the more stable environmental conditions present in the urban area. Oliveira et al. (2003) also observed the presence of *Lu. longipalpis* during the entire year, higher population densities in those periods immediately following the rainy season. On the other hand, Resende et al. (2006) only registered high abundances immediately after periods with a high mean monthly rainfall.

One of the advantages of using D_M diversity index is the simple calculation required; however, communities that show similar species and sand flies collected have the same D_M without necessarily being identical (Brower & Zar 1984, Magurran 1988, Service 1993). Consequently, evenness becomes an important population characteristic, as it measures how individuals are distributed amongst the species (Magurran 1988, Begon et al. 1996). The large species diversity in the rural area was expected due to the greater number of ecotopes found throughout more diverse environmental gradients and considering the availability of resources. The rural area includes residual forests, rocky outcrops and subsistence farms, as well as the animals that serve as blood sources for sand flies. On the other hand, the urban area contained the lowest diversity, due to the reduced availability of and homogeneity of resources. This type of environment favours specific populations that eventually become dominant, such as *Lu. longipalpis*. The higher evenness value for the rural area is probably related to the greater heterogeneity present in this environment, which allows for the adaptation of a greater number of species with a reduced abundance. The similarity between the periurban and urban areas may be related to the reduced diversity of breeding sites and ecotopes for immature forms that can result from a more homogeneous environment.

The data obtained by characterising communities from different areas, if applied more frequently, may provide a better understanding of the transmission dynamics of leishmaniasis and could be used to identify at-risk areas. The high abundance of species considered

epidemiologically important, such as *Ny. whitmani*, *Pi. pessoai* and *Mg. migonei*, in the rural area and their presence in the periurban area indicates a higher risk for the acquisition of ACL in these areas. Furthermore, the high abundance of *Lu. longipalpis* in the urban area indicates that this species is well-adapted to an urbanised environment. Taken together with the identification of dogs infected with *L. infantum chagasi* in the municipality, these observations indicate that public health authorities should be concerned with the presence of *Lu. longipalpis* in the urban area, especially since these events usually precede human cases of AVL.

REFERENCES

- Andrade Filho JD, Galati EAB, Falcão AL 2007. *Nyssomyia intermedia* (Lutz & Neiva, 1912) and *Nyssomyia neivai* (Pinto, 1926) (Diptera: Psychodidae: Phlebotominae) geographical distribution and epidemiological importance. *Mem Inst Oswaldo Cruz* 102: 481-487.
- Azevedo ACR, Vilela ML, Souza NA, Andrade-Coelho CA, Barbosa AF, Firmo ALS, Rangel EF 1996. The sand fly fauna (Diptera: Psychodidae: Phlebotominae) of a focus of cutaneous Leishmaniasis in Ilhéus, state of Bahia, Brazil. *Mem Inst Oswaldo Cruz* 91: 75-79.
- Begon M, Harper JL, Townsend CR 1996. *Ecology: individuals, populations and communities*, 3rd ed., Blackwell Science, Oxford, 1068 pp.
- Brazil RP, Morton IE, Ward RD 1991. Notes of the feeding habits of *Lutzomyia* (*Nyssomyia*) *whitmani* (Diptera: Psychodidae) in Ceará state, Northeast Brazil. *Mem Inst Oswaldo Cruz* 86: 497-498.
- Brower JE, Zar JH 1984. *Field & laboratory methods for general ecology*, 2nd ed., WCB, Dubuque, 226 pp.
- Carvalho GML, Andrade Filho JD, Falcão AL, Rocha-Lima ACVM, Gontijo CMF 2008. Naturally infected *Lutzomyia* sand flies in a *Leishmania*-endemic area of Brazil. *Vector Borne Zoonotic Dis* 8: 407-414.
- Casanova C, Hamilton JGC, Trigo JR, Costa AIP 2006. Identification of sex pheromones of *Lutzomyia longipalpis* (Lutz & Neiva, 1912) populations from the state of São Paulo, Brazil. *Mem Inst Oswaldo Cruz* 101: 113-115.
- Casanova C, Mayo RC, Rangel O, Mascarini LM, Pignatti MG, Galati EAB, Gomes AC 1995. Natural *Lutzomyia intermedia* (Lutz & Neiva) infection in the valley of the Mogi Guaçu River, state of São Paulo, Brazil. *Bol Dir Malarial San Amb* 35 (Suppl.1): 77-84.
- Casanova C, Natal D, Santos FAM 2009. Survival, population size and gonotrophic cycle duration of *Nyssomyia neivai* (Diptera: Psychodidae) at an endemic area of American cutaneous leishmaniasis in Southeastern Brazil. *J Med Entomol* 46: 42-50.
- CEPAGRI - Centro de Pesquisas Meteorológicas e Climáticas Aplicadas à Agricultura 2009. [homepage on the internet]. Campinas: clima dos municípios paulistas: a classificação climática de Köeppen para o estado de São Paulo. [updated 2003 Apr; cited 2009 Oct 19]. Available from: <http://www.cpa.unicamp.br/outras-informacoes/clima-dos-municipios-paulistas.html>.
- CIIAGRO - Centro Integrado de Informações Agrometeorológicas 2009. [homepage on the internet]. CIIAGRO on line. Files updated weekly. Updated Oct, 2009. Available from: <http://www.ciiagro.sp.gov.br/ciiagroonline/MenuMonClim.htm>.
- Costa AIP, Casanova C, Rodas LAC, Galati EAB 1997. Atualização da distribuição geográfica e primeiro encontro de *Lutzomyia longipalpis* em área urbana no estado de São Paulo, Brasil. *Rev Saude Publica* 31: 632-633.
- Dajoz R 1973. *Ecologia geral*, 2nd ed., Editora Vozes Ltda., Petrópolis, 472 pp.
- Ferro C, Pardo R, Torres M, Morrison AC 1997. Larval microhabitats of *Lutzomyia longipalpis* (Diptera: Psychodidae) in an endemic focus of visceral leishmaniasis in Colombia. *J Med Entomol* 34: 719-728.
- Forattini OP 1973. *Entomologia médica. Psychodidae, Phlebotominae, Leishmaniose, Bartonelose*, Vol. IV, Edgard Blucher, São Paulo, 658 pp.
- Galati EAB 2003. Morfologia e taxonomia: morfologia, terminologia de adultos e identificação dos táxons da América. In EF Rangel, R Lainson, *Flebotomíneos do Brasil*, Editora Fiocruz, Rio de Janeiro, p. 53-176.
- Galati EAB, Nunes VLB, Boggiani PC, Dorval MEC, Cristaldo G, Rocha HC, Oshiro ET, Damasceno-Junior GA 2006. Phlebotomines (Diptera: Psychodidae) in forested areas of the Serra da Bodoquena, state of Mato Grosso do Sul, Brazil. *Mem Inst Oswaldo Cruz* 101: 175-193.
- Galati EAB, Nunes VLB, Dorval MEC, Oshiro ET, Cristaldo G, Espíndola MA, Rocha HC, Garcia WB 1996. Estudo dos flebotomíneos (Diptera: Psychodidae) em área de leishmaniose tegumentar no estado de Mato Grosso do Sul, Brasil. *Rev Saude Publica* 30: 115-128.
- Gomes AC 1994. Sand fly vectorial ecology in the state of São Paulo. *Mem Inst Oswaldo Cruz* 89: 457-460.
- Gomes AC, Barata JMS, Rocha e Silva E, Galati EAB 1989. Aspectos ecológicos da leishmaniose tegumentar americana. *Rev Inst Med Trop São Paulo* 31: 32-39.
- Gomes AC, Galati EAB 1987. Aspectos ecológicos da leishmaniose tegumentar americana. 5. Estratificação da atividade espacial e estacional de Phlebotominae (Diptera: Psychodidae) em áreas de cultura agrícola da região do Vale do Ribeira, estado de São Paulo, Brasil. *Mem Inst Oswaldo Cruz* 82: 467-473.
- Katz G 1997. *Epidemiologia da leishmaniose tegumentar americana no estado de São Paulo*, MSc Dissertation, Faculdade de Medicina, Universidade de São Paulo, São Paulo, 134 pp.
- Lainson R 1989. Demographic changes and their influence on the epidemiology of the American leishmaniasis. In MW Service, *Demography and vector-borne diseases*, CRC Press, Boca Raton, p. 85-106.
- Magurran AE 1988. *Ecological diversity and its measurement*, Princeton University, Princeton, 177 pp.
- Mayo RC, Casanova C, Mascarini LM, Pignatti MG, Rangel O, Galati EAB, Wanderley DMV, Corrêa FMA 1998. Flebotomíneos (Diptera: Psychodidae) de área de transmissão de leishmaniose tegumentar americana, no município de Itupeva, região sudeste do estado de São Paulo, Brasil. *Rev Soc Bras Med Trop* 31: 339-345.
- Mayrink W, Williams P, Coelho MV, Dias M, Martins AV 1979. Epidemiology of dermal leishmaniasis in the Rio Doce Valley, state of Minas Gerais, Brazil. *Ann Trop Med Parasitol* 73: 123-137.
- Morrison AC, Ferro C, Pardo R, Torres M, Devlin B, Wilson ML, Tesh RB 1995. Seasonal abundance of *Lutzomyia longipalpis* (Diptera: Psychodidae) at an endemic focus of visceral leishmaniasis in Colombia. *J Med Entomol* 32: 538-548.
- Oliveira AG, Andrade Filho JD, Falcão AL, Brazil RP 2003. Estudo de flebotomíneos (Diptera: Psychodidae: Phlebotominae) na zona urbana da cidade de Campo Grande, Mato Grosso do Sul, Brasil, 1999-2000. *Cad Saude Publica* 19: 933-944.
- Rangel EF, Lainson R 2003. *Flebotomíneos do Brasil*, Editora Fiocruz, Rio de Janeiro, 360 pp.
- Rangel O, Vido A 1997. Fauna flebotomínea de leishmaniose tegumentar americana na região de São João da Boa Vista-SP. *Rev Patol Trop* 26: 17-24.

- Resende MC, Camargo MCV, Vieira JRM, Nobi RCA, Porto Oliveira CL, Pessanha JE, Cunha MCM, Brandão ST 2006. Seasonal variation of *Lutzomyia longipalpis* em Belo Horizonte, estado de Minas Gerais. *Rev Soc Bras Med Trop* 39: 51-55.
- Roberts DR, Hsi BP 1979. An index of species abundance for use with mosquito surveillance data. *Environ Entomol* 8: 1007-1013.
- Rutledge LC, Ellenwood DA 1975. Production of phlebotomine sandflies on the open forest floor in Panama: hydrologic and physiographic relations. *Environ Entomol* 4: 78-82.
- Service MW 1993. *Mosquito ecology: field sampling methods*, Chapman Hall, London, 988 pp.
- SES/SUCEN/CCD - Secretaria de Estado da Saúde/Superintendência de Controle de Endemias/Coordenadoria de Controle de Doenças 2008. Atualização da classificação epidemiológica dos municípios para a leishmaniose visceral americana. *Bol Epidemiol Paulista* 5: 18-25.
- Shaw JJ, Lainson R 1987. Ecology and epidemiology: New World. In W Peters, R Killick-Kendrick (eds), *The leishmaniasis in biology and medicine*, Vol. 1, Academic Press, London, p. 291-363.
- Shimabukuro PHF 2007. *Chave de identificação ilustrada dos Phlebotominae (Diptera: Psychodidae) do estado de São Paulo*, PhD Thesis, Secretaria de Estado da Saúde, Coordenadoria de Controle de Doenças, São Paulo, 121 pp.
- Silva AM, Camargo NJ, Santos DR, Massafra R, Ferreira AC, Postai C, Cristóvão EC, Konolsaisen JF, Bisetto Jr A, Perinazo R, Teodoro U, Galati EAB 2008. Diversidade, distribuição e abundância de flebotomíneos (Diptera: Psychodidae) no Paraná. *Neotrop Entomol* 37: 209-225.
- Souza GD, Santos E, Andrade Filho JD 2009. The first report of the main vector of visceral leishmaniasis in America, *Lutzomyia longipalpis* (Lutz & Neiva) (Diptera: Psychodidae: Phlebotominae), in the state of Rio Grande do Sul, Brazil. *Mem Inst Oswaldo Cruz* 104: 1181-1182.
- Thorntwaite CW, Mather JR 1955. *The water balance. Publications in climatology*, Drexel Institute of Technology Laboratory of Climatology, Centerton, 104 pp.
- Tolezano JE 1994. Ecoepidemiological aspects of American cutaneous leishmaniasis in the state of São Paulo, Brazil. *Mem Inst Oswaldo Cruz* 89: 427-434.