

# Papéis Avulsos de Zoologia

Museu de Zoologia da Universidade de São Paulo

Volume 52(16):185-195, 2012

[www.mz.usp.br/publicacoes](http://www.mz.usp.br/publicacoes)  
<http://portal.revistasusp.sibi.usp.br>  
[www.scielo.br/paz](http://www.scielo.br/paz)

ISSN impresso: 0031-1049

ISSN on-line: 1807-0205

## STRUCTURE OF DROSOPHILIDAE ASSEMBLAGE (INSECTA, DIPTERA) IN PAMPA BIOME (SÃO LUIZ GONZAGA, RS)

JEAN LUCAS POPPE<sup>1,2</sup>

VERA LÚCIA DA SILVA VALENTE<sup>3,4</sup>

HERMES JOSÉ SCHMITZ<sup>4,5</sup>

### ABSTRACT

*The Brazilian Pampa (the southernmost end of the country) is currently a highly modified environment because of increasing agricultural activities. In many places, only small parts of grasslands remain inside an agricultural landscape. Drosophilidae (Diptera) have been widely used as a potential bioindicators to monitor the effects of anthropogenic changes in natural environments. However, the fauna of Drosophilidae in the Pampa Biome from natural and disturbed environments, still remains largely unknown. The present study represents one of the first attempts to fill this gap, showing results from monthly collections in the municipality of São Luiz Gonzaga (28°24'28"S, 54°57'39"W), in the Brazilian Pampa. A species inventory was carried out in two contrasting environments, an urban zone and a forest remnant (rural zone). In both areas banana-baited traps were used to capture adult drosophilids. The identification was made using external morphology and male terminalia. In total, 13,379 drosophilids were analyzed (rural zone: N = 8,812 and S<sub>obs</sub> = 25; urban zone: N = 4,567 and S<sub>obs</sub> = 16). In the present study, 16 (60%) out of 26 species were found exclusively or preferentially in the forest. The period of highest richness was between the months of June to November (roughly winter and spring), and the period of lowest richness was from December to May (roughly summer and autumn). An analysis of cluster by the Coefficient of Jaccard showed that species composition slightly changes when the period of the year with higher temperatures (from January to May) is compared with the period with lower temperatures (from June to October). The species abundances were also highly affected by seasonality, as revealed by the Morisita Index, since the samples clustered into similar groups in consecutive periods and in the same season, showing the seasonal preference of some species. The time component was a determinant in the diversity of the assemblage, surpassing the spatial effect. The strong reduction in diversity in the urban area when compared to a small forest patch is evidence of the importance of the natural environments in maintaining the diversity in the Pampa biome, currently a highly disturbed landscape.*

KEY-WORDS: Pampa Biome; Drosophilidae; Diversity; Bioindicator.

1. Programa de Pós-Graduação em Biologia Animal, Universidade Federal do Rio Grande do Sul (UFRGS). Porto Alegre, RS, Brasil.

2. Curso de Ciências Biológicas, Universidade Regional Integrada do Alto Uruguai e das Missões (URI). Santo Ângelo, RS, Brasil.

3. Departamento de Genética, Instituto de Biociências, Universidade Federal do Rio Grande do Sul (UFRGS). Caixa Postal 15.053, CEP 91501-970, Porto Alegre, RS, Brasil.

4. Programa de Pós-Graduação em Genética e Biologia Molecular, Universidade Federal do Rio Grande do Sul. Porto Alegre, RS, Brasil.

5. Programa de Pesquisa em Biodiversidade da Amazônia Oriental. Museu Paraense Emílio Goeldi, Avenida Perimetral, 1.901, Terra Firme, CEP 66077-530, Belém, PA.

## INTRODUCTION

The loss of biodiversity has become a central issue, with the recognition that the increasing human pressure on landscapes and natural habitats results in population or species extinction at unprecedented rates. Populations are entities in a continuous process of change. Even when the community and the ecosystem do not seem to be changing, intrinsic factors like the density, mortality, birth rate, food availability, among others, are in constant fluctuation, and the species that compose this community keep in constant adjustment for these changes (Odum, 1988). The environment change affects the occurrence and the abundance of some resources used by species that in turn may respond differently to these alterations. In this sense, it is possible to distinguish two kinds of time-based change: the predictable change (like the daily variation and the seasonal variation), which can increase or decrease the diversity of local species, and the unpredictable change (stochastic events, and catastrophic sometimes), which can cause a decrease in specific diversity (Begon *et al.*, 1996). Changes in land use, including urbanization and agricultural expansion, concomitant with the fragmentation and disturbance of the natural environments, may substantially alter species distributions and diversity. The existence of large gaps in species occurrence data and comprehensive monitoring schemes are, therefore, strong impediments to the detection of these processes (Kivinen, 2007).

The Brazilian Pampa is currently a highly modified environment. The Pampa Biome is a landscape mostly neglected by biodiversity studies, despite its high diversity and characteristic wildlife and flora. This ecosystem extends over an area of approximately 700,000 km<sup>2</sup> of mainly plain lowlands, shared between Argentina, Brazil and Uruguay (Bilenca & Miñarro, 2004). In Brazil, it covers the southernmost end of the country, in the state of Rio Grande do Sul. This portion represents about 176,000 km<sup>2</sup>, approximately 63% of the area of the state and 2.1% of the Brazilian territory (Collares, 2006). The original landscape is predominantly covered by grasslands, although these are sometimes naturally invaded by arboreal formations of deciduous seasonal forest and ombrophilous dense forest, remarkably in northern and eastern parts of the State of Rio Grande do Sul (IBGE, 2004), where the biome is bordered by the Atlantic Forest biome. Unfortunately, the Pampa has been suffering a wide loss of diversity and habitat due to the fast agricultural expansion started in the 1970's, aggravated recently by plans to convert wide areas of grasslands to monoculture of trees, according to the Agricultural Census (IBGE,

2006). In many places, only small parts of grasslands remain inside an agricultural landscape (Risser, 1997; Porto, 2002; Bencke, 2003). Currently, just 11.7% of the Pampa Biome has been spared human influence in Rio Grande do Sul (PROBIO, 2007).

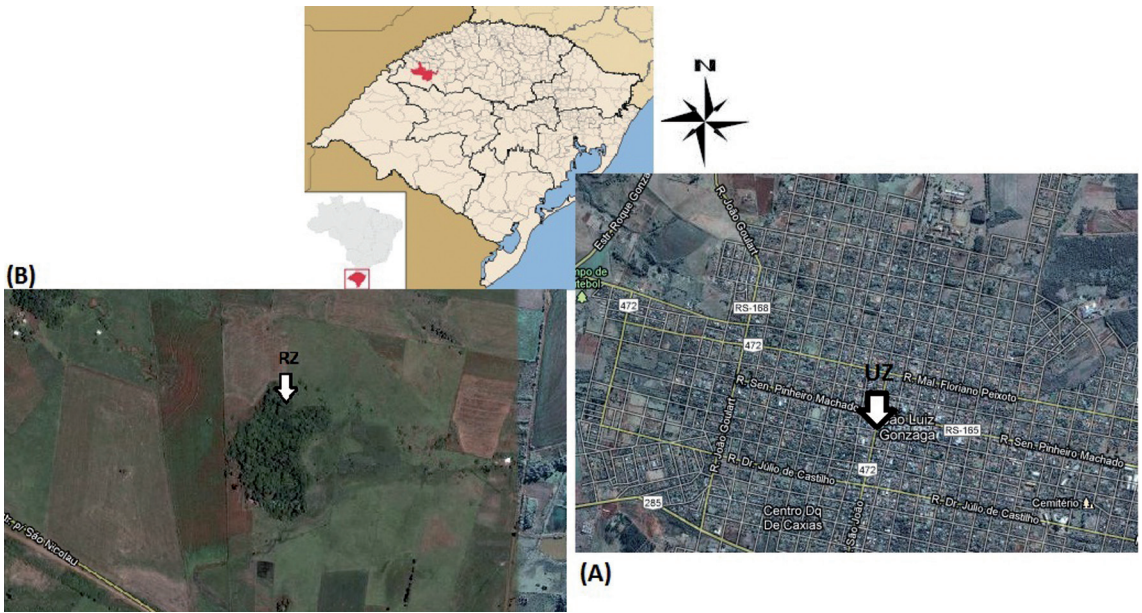
Flies of family Drosophilidae (Diptera) have been widely used in scientific research as a paradigmatic model and more recently have become a target taxon of biodiversity inventories and suggested as a potential bioindicator to monitor the effects of anthropogenic changes in natural environments (Avondet *et al.*, 2003; Ferreira & Tidon, 2005; Gottschalk *et al.*, 2007). They are a diverse and relatively well-known taxon, easily sampled with a low cost, and very sensitive to environmental changes. However, the fauna of Drosophilidae in the Pampa Biome, both from natural and disturbed environments, still remains largely unknown. Although the state of Rio Grande do Sul has been one of the most targeted study areas in Brazil concerning Drosophilidae diversity, most of the studies have been conducted in localities belonging to the Atlantic Forest Biome (Petersen, 1960; Franck & Valente, 1985; and others), while the Pampa Biome has been largely neglected, being one of the most unexplored in Brazil, as noted by Gottschalk *et al.* (2008). In fact, the only Drosophilidae diversity inventories performed in this Biome in Brazil sampled localities in or nearby the city of Porto Alegre: a forested area at Itapuá State Park (Valente & Araújo, 1991), a rural grassland area in Guaíba (Saavedra *et al.*, 1995) and the urban region of the city of Porto Alegre (Silva *et al.*, 2005; Garcia *et al.*, 2008; Garcia *et al.*, 2012). Recently, Hochmüller *et al.* (2010) conducted a survey in a transition area between Pampa Biome and Atlantic Forest Biome in the municipality of Cruz Alta. Similarly, outside Brazil, only a few Drosophilidae inventories have been conducted in the biome, a study carried out in Argentina (Fernández Iriarte & Lopez, 1995) and one in Uruguay (Goñi *et al.*, 1997, 1998), besides sparse records.

The present study represents one of the first attempts to fill this gap, showing results from monthly collections in the municipality of São Luiz Gonzaga, Rio Grande do Sul, in the Brazilian Pampa. A biodiversity inventory was carried out in two contrasting environments, an urban zone and a forest remnant.

## MATERIALS AND METHODS

### Study area

The collections were carried out in two areas in the municipality of São Luiz Gonzaga (28°24'28"S,



**FIGURE 1:** Rio Grande do Sul Map showing the municipality of São Luiz Gonzaga and the sampling zones: Urban Zone (A); Rural Zone (B). Source: <http://maps.google.com.br/maps?hl=pt-BR&tab=wl&q=sao%20luiz%20gongazaga>.

54°57'39"W), northwest of the state of Rio Grande do Sul, southern Brazil, a region of subtropical climate characterized by rainy weather and well defined seasons, with negative temperatures during the winter and a hot summer. The region has been heavily degraded, consisting nowadays of medium and small-sized cities in a predominantly agricultural landscape, with the natural grasslands highly disturbed and the forested areas reduced to just small patches of secondary forests. It is located near the northern border of the Pampa Biome, as defined by IBGE (2004).

Two contrasting localities were surveyed. The urban zone (UZ), in downtown (28°24'390"S, 54°57'371"W), is situated in the main urban and commercial area of the municipality (Fig. 1a). According to the criteria described by Ruszczyk (1986/1987), based on percentage of vegetal cover like was done by Gottschalk *et al.* (2007) in Florianópolis, this area can be considered as having a medium urbanization level. The rural zone (RZ), located about 10 km from downtown collection point (28°22'51.2"S, 55°00'8.62"W), is a small native fragment of deciduous seasonal forest inside a region originally with predominance of steppe savanna, today largely replaced with agricultural areas (Fig. 1b).

**Collections and identification**

In both areas banana-baited traps (Tidon & Sene, 1988) were used to capture adult drosophilids.

For each sample, one kilogram of banana were mashed, sprinkled with baker's yeast and distributed in 5 traps hung in the trees at about 1.5 m above the ground, where they were kept for five days. Samples were taken monthly from September 2007 to September 2008, and in November 2008 and January 2009.

Flies were maintained in ethanol 70% until identification. The identification was made using external morphology and male terminalia, consulting specialized literature. Analysis of male terminalia was conducted according to Bächli *et al.* (2004).

Some individuals belonging to *Drosophila repleta*, *D. tripunctata* and *D. guarani* species groups that remained unidentified at species level were not scored for statistical analysis of species abundance and diversity measures (just ~ 8% of total sample). However, they were considered in the total number of individuals (*N*) and the number of individuals of Neotropical species (*N<sub>nat</sub>*).

Voucher specimens of the material collected were deposited in the Laboratory of Zoology of Universidade Regional Integrada do Alto Uruguai e das Missões (URI) in Santo Ângelo, RS, Brazil.

**Data analysis**

Diversity data were measured as follows: (1) observed species richness (*S<sub>obs</sub>*); (2) species richness estimated by rarefaction method (*S<sub>rar</sub>*); (3) Shannon-Wiener heterogeneity index (*H*); and (4) Smith-Wilson

evenness index ( $E_{var}$ ). Of these,  $H'$  and  $E_{var}$  were calculated using the software Ecological Methodology (Krebs, 1999). Natural logarithm (ln) was used to calculate  $H'$ . For  $S_{rar}$ , all samples were standardized to 11 specimens, to nullify the effect of  $N$  (number of individuals) in species richness, using Biodiversity-Pro version 2 (McAleece *et al.*, 1997). The correlation among  $S_{obs}$ ,  $S_{rar}$ ,  $H'$ ,  $E_{var}$  and  $N$  was tested by Linear correlation  $r$  in Past 1.34 (Hammer *et al.*, 2001).

Statistically significant differences in values of  $H'$ ,  $E_{var}$ ,  $S_{obs}$ ,  $N$ ,  $N_{exot}$  and  $N_{nat}$  between collection points were analyzed using the T test, in Past 1.34 (Hammer *et al.*, 2001). The preference of some species for a specific environment was tested with Wilcoxon tests based on their absolute abundances, using the same software.

The influence of space and time on assemblage diversity was estimated by the following calculation:  $H'_{between} = H'_{total} - (Nj H'j)/Nt$ ; where  $H'_{between}$  is the value of  $H'$  for a given component;  $H'_{total}$  is the value of  $H'$  considering all the samples together;  $Nt$  is the total number of individuals in all samples,  $Nj$  is the number of individuals in category  $j$ ,  $H'j$  is  $H'$  within category  $j$ . Spatial (urban and rural zones) and temporal (monthly collections) components were considered.

The similarity between samples was investigated by cluster analysis using UPGMA method, in Past 1.34 (Hammer *et al.*, 2001). Similarity measures were Coefficient of Jaccard and Morisita index of similarity. Coefficient of Jaccard is a binary coefficient (deals with presence/absence data), so it was used to compare the similarities in species composition among samples. On the other hand, Morisita index deals with quantitative data, so it was used to compare samples in terms of relative abundance of each species. As the original Morisita index showed little differences between our samples, we used it after a logarithmic transformation [ $\ln(x+1)$ ], as recommended by Wolda (1981) and Krebs (1999) for communities with few species in common and many rare species, as the present sample.

## RESULTS AND DISCUSSION

### Species occurrence and abundances

In total, 13,379 drosophilids were analyzed (RZ:  $N = 8,812$  and  $S_{obs} = 25$ ; UZ:  $N = 4,567$  and  $S_{obs} = 16$ ), distributed as 26 species, 23 of which belonging to genus *Drosophila*. One species probably has not been described yet, and was called here *Drosophila* sp.Q2. This is the same species referred to by the same name by Gottschalk *et al.* (2007), in a study that reported its occurrence in Morro da Lagoa da

Conceição and Morro da Cruz, in Florianópolis, SC, and found abundantly by Sabrina C.F. de Oliveira in the Unidade de Conservação Ambiental Desterro (UCAD), also in Florianópolis (pers. comm.). The genera *Zygothrica*, *Zaprionus* and *Leucophenga* were represented by just one species each (Tables 1 and 2).

Two species of *Drosophila*, *D. aldrichi* and *D. repleta*, were recorded in the State of Rio Grande do Sul for the first time. For *D. aldrichi* this is the new southernmost record. With these new records, the number of described drosophilid species known for Rio Grande do Sul rises to 86. Also were found *D. nigricruria*, *D. virilis* and *Leucophenga maculosa*, which were just recently found for the first time in Rio Grande do Sul by Hochmüller *et al.* (2010).

From the 26 species found, six are exotic. Except for one collection in RZ, during the January of 2009, in summer, *D. simulans* was always the most abundant species in our study, showing expressive dominance in UZ (68% of the total of individuals) and being also the most abundant species in RZ (48% of the individuals). This species frequently is the most abundant exotic species in natural environments in Brazil (Sene *et al.*, 1980; Torres & Madi-Ravazzi, 2006; Schmitz *et al.*, 2007; Bizzo *et al.*, 2010; Hochmüller *et al.*, 2010). Its sibling species, *D. melanogaster*, is also commonly found in synanthropic environments, although with lower abundances, as in the present study. *Zaprionus indianus* is a recent invader (Vilela, 1999) and became a very abundant species in urbanized environments. Therefore, the abundance of *Z. indianus* in São Luiz Gonzaga seems to be comparatively lower than in other locations (Castro & Valente, 2001; De Toni *et al.*, 2001; Ferreira & Tidon, 2005; Silva *et al.*, 2005; Gottschalk *et al.*, 2007), where it represents, in some situations, more than half of collected individuals. In São Luiz Gonzaga, this species achieved a total relative abundance of about 5% in the urban zone and of about 1% in the forest fragment, similar to the results found by Hochmüller *et al.* (2010) in Cruz Alta, in the region of transition between the Atlantic Forest and Pampa Biome in the countryside of Rio Grande do Sul. The present study adds new evidence that the populations of this species are relatively small in this region. As this region is next to the southern limit of its distribution (Uruguay and northern Argentina), it is possible that this species is represented by marginal populations living in suboptimal conditions, limited by weather conditions like lower temperatures.

Another similarity between the drosophilids assemblages from São Luiz Gonzaga and Cruz Alta is the relatively higher representativeness of *D. immigrans* and *D. busckii*, when compared to other studies

**TABLE 1:** Monthly absolute abundance of drosophilid species collected in a forest patch in the rural zone (RZ) of São Luiz Gonzaga, RS, Brazil.

	SEP 07	OCT 07	NOV 07	DEC 07	JAN 08	FEB 08	APR 08	MAY 08	JUN 08	JUL 08	AUG 08	SEP 08	NOV 08	JAN 09
<i>D. aldrichi</i>							2							
<i>D. antonietae</i>			2						5					
<i>D. bandeirantorum</i>										1				
<i>D. busckii</i>	171	288	169							3		46		
<i>D. buzzatii</i>	4	8	2	2					4	2	2	2		
<i>D. cardinoides</i>									9	11	2	5		
<i>D. griseolineata</i>										5		3		
<i>D. hydei</i>	11	12	3	1					1		1	1		
<i>D. immigrans</i>	21	11	17		1		1		4		8	11	50	
<i>D. maculifrons</i>			1						6	5	6	4		
<i>D. mediopunctata</i>	3								3	2	1	2		
<i>D. melanogaster</i>	22	11				3	12		44		29	19		
<i>D. mercatorum</i>	139	98	97	3	8	2			27	60	83	58	44	1
<i>D. nigricuria</i>	2	5				2	2	3	9	6	8	10	2	1
<i>D. onca</i>									2		2	5	5	
<i>D. pallidipennis</i>			2		9	4			3		13	7	17	
<i>D. paraguayensis</i>											1			
<i>D. polymorpha</i>	41	12	18	8	70	34	8	3	118	182	335	101	24	100
<i>D. simulans</i>	187	290	207	20	45	52	52	5	204	347	1340	1275	56	146
<i>D. sp. Q2</i>			3										6	
<i>D. virilis</i>	2													
<i>D. willistoni</i>					10	31	6		32	101	8	6	1	626
Gr. <i>guarani</i> (females)									1					
Gr. <i>repleta</i> (females)	196	77	71	11	3	3	5	2	37	95	78	52	73	2
Gr. <i>tripunctata</i> (females)	7		1				1		2	1		3		
<i>Leucophenga maculosa</i>									33					
<i>Zaprionus indianus</i>							44		7	3	3	3	23	9
<i>Zygothrica vittimaculosa</i>		3							4	23	9			

**TABLE 2:** Monthly absolute abundance of drosophilid species collected in the urban zone (UZ) of São Luiz Gonzaga, RS, Brazil.

	SEP 07	OCT 07	NOV 07	DEC 07	JAN 08	FEB 08	APR 08	MAY 08	JUN 08	JUL 08	AUG 08	SEP 08	NOV 08	JAN 09
<i>D. bandeirantorum</i>											13			
<i>D. busckii</i>	123	90	8							7	8			
<i>D. buzzatii</i>	3	78	3	2		2			1					
<i>D. cardinoides</i>				1							1			
<i>D. hydei</i>	8	53	42							2	10		2	
<i>D. immigrans</i>	4		8						1		13	1	17	
<i>D. maculifrons</i>									6					
<i>D. melanogaster</i>	6	10	7		2		2	5	22	8	59	16		
<i>D. mercatorum</i>	61	36	16		6		3	3	10	10	45	3	5	2
<i>D. nigricuria</i>	1			2					2					
<i>D. pallidipennis</i>											1		1	
<i>D. polymorpha</i>	6	10	1	2	1	1			2	2	6	1		
<i>D. repleta</i>					2									
<i>D. simulans</i>	179	205	87	25	20	134	13	33	178	190	1401	367	86	171
<i>D. willistoni</i>						6								
Gr. <i>repleta</i> (females)	80	143	17	3	1			1	17	34	15	4	3	1
Gr. <i>tripunctata</i> (females)					1		1				8			
<i>Zaprionus indianus</i>					1	6	55	18	9	3	3		22	141

in Brazil. Contrasting *Z. indianus*, these species seem to be related to more temperate weather, becoming markedly rarer in northernmost localities (Ferreira & Tidon, 2005; Torres & Madi-Ravazzi, 2006; Gottschalk *et al.*, 2007; Schmitz *et al.*, 2007; Bizzo *et al.*, 2010). The other exotic species, *D. virilis*, is not commonly attracted to banana-baited traps and was represented by one individual only.

Between the Neotropical species, the most common were *D. mercatorum*, *D. hydei* and *D. buzzatii* in UZ (all belonging to *D. repleta* group) and *D. mercatorum*, *D. polymorpha* and *D. willistoni* in RZ. The abundances of the species of the *D. repleta* group are underestimated, since discrimination of females is difficult and just the males were identified. However, assuming that the relative abundances of the females were the same as of the males, *D. mercatorum* is the most common Neotropical species in São Luiz Gonzaga. This differentiates the assemblages of drosophilids collected in São Luiz Gonzaga from the assemblages found in Porto Alegre and in localities of Atlantic Forest and Amazon Biomes, where *D. willistoni* is almost always the most abundant Neotropical species (Martins, 1987; Silva *et al.*, 2005; Gottschalk *et al.*, 2007). Again, the results of the present study are similar to the findings by Hochmüller *et al.* (2010) in Cruz Alta, where a lower representativeness of *D. willistoni* was observed. On the other hand, in Cruz Alta *D. mercatorum* did not achieve expressive abundances (*D. maculifrons* was the most abundant Neotropical species). A high representativeness of *D. mercatorum* was found by Ferreira & Tidon (2005), in Brasília, Cerrado Biome, where it also was the most abundant Neotropical species.

Some important absences can be noticed in assemblages of drosophilids in São Luiz Gonzaga, like *D. malerkotliana*, *D. paulistorum* and *D. saltans* species group, taxa that are quite common in most part of Brazil. *Drosophila malerkotliana* (an introduced species) and *D. saltans* species group also seem to be absent in Cruz Alta, while *D. paulistorum* is present at low abundance in that locality (Hochmüller *et al.*, 2010).

The preference of some species for a given environment has been reported by many authors (Dobzhansky & Pavan, 1950; Sene *et al.*, 1980; Ferreira & Tidon, 2005; Tidon, 2006). In the present study, 16 (60%) out of the 26 species were found exclusively or preferentially in the forest, while nine did not express any preference and just one was exclusive of the city (Table 3). This last case was *D. repleta*, which in spite of being a Neotropical species, was introduced in many regions around the world, being currently a cosmopolitan species, normally associated to anthropic presence. The preference for the forest patch was

**TABLE 3:** Drosophilidae species collected in São Luiz Gonzaga, RS, classified according to environment preference. Species without preference were abundantly present in both areas.

Only in forest	Without preference
<i>D. aldrichi</i>	<i>D. bandeirantorum</i>
<i>D. antonietae</i>	<i>D. busckii</i>
<i>D. griseolineata</i>	<i>D. buzzatii</i>
<i>D. mediopunctata</i>	<i>D. cardinoides</i>
<i>D. onca</i>	<i>D. hydei</i>
<i>D. paraguayensis</i>	<i>D. maculifrons</i>
<i>D. sp.Q2</i>	<i>D. melanogaster</i>
<i>D. virilis</i>	<i>D. simulans</i>
<i>Leucophenga maculosa</i>	<i>Zaprionus indianus</i>
<i>Zygothrica vittimaculosa</i>	<b>Only in city</b>
<b>Preferentially in forest</b>	<i>D. repleta</i>
<i>D. immigrans*</i>	
<i>D. mercatorum**</i>	
<i>D. nigricruria**</i>	
<i>D. pallidipennis*</i>	
<i>D. polymorpha***</i>	
<i>D. willistoni**</i>	

\* p < 0.05, \*\* p < 0.01, \*\*\* p < 0.001

higher among the Neotropical species, 70% of which occurring exclusively or preferentially in this environment; however, when only the introduced species are considered, this proportion decreased to one third.

### Diversity measures

The highest diversity was found in RZ, considering either heterogeneity (*H'*) or species richness ( $S_{obs}$  or  $S_{rar}$ ) (Table 4). Avondet *et al.* (2003), Gottschalk *et al.* (2007) and Garcia *et al.* (2012), in studies performed in the cities of Oxford, OH, USA, Florianópolis, SC, Brazil and Porto Alegre, RS, Brazil, respectively, found some differences in the abundance of species along an urban gradient, but did not find any decrease in diversity. On the other hand, other studies like those of Goñi *et al.* (1997), Ferreira & Tidon (2005) and Hochmüller *et al.* (2010), respectively, in Montevideo, Uruguay, Brasília, DF, Brazil and Cruz Alta, RS, Brazil, found some evidence of decrease in diversity in urbanized regions, when compared with natural environments. The factors that cause the decrease in diversity in some localities and not in others remain to be elucidated. Gottschalk *et al.* (2007) suggested that the existence of green areas nearby the urban areas could support the survival of native drosophilid species in the city. Considerable portions of natural environment remnants still persist in Florianópolis and, to a lesser extent, in Porto Alegre. On the other hand, the region where Cruz Alta and São

**TABLE 4:** Monthly variation in Shannon-Wiener heterogeneity index ( $H'$ ), Smith and Wilson's index of evenness ( $E_{var}$ ), observed species richness ( $S_{obs}$ ), species richness estimated by rarefaction ( $S_{rar}$ , for  $n = 11$ ), number of individuals ( $N$ ), number of individuals of exotic species ( $N_{exot}$ ) and number of individuals of Neotropical species ( $N_{nat}$ ), of the assemblages of drosophilids in urban (UZ) and rural (RZ) zones of São Luiz Gonzaga, RS, Brazil.

		SEP	OCT	NOV	DEC	JAN	FEB	APR	MAY	JUN	JUL	AUG	SEP	NOV	JAN
$E_{var}$	ZU	0.214	0.471	0.332	0.433	0.461	0.218	0.337	0.525	0.243	0.280	0.163	0.127	0.263	0.148
	ZR	0.218	0.248	0.175	0.467	0.311	0.320	0.318	0.963	0.300	0.193	0.158	0.208	0.327	0.102
$H'^*$	ZU	1.318	1.569	1.426	0.820	1.170	0.445	0.749	1.048	0.911	0.644	0.504	0.252	1.066	0.722
	ZR	1.649	1.366	1.408	1.137	1.269	1.387	1.443	1.066	1.921	1.530	0.941	0.832	1.902	0.850
$S_{obs}^{**}$	ZU	9	7	8	5	7	5	5	4	9	7	11	5	6	3
	ZR	11	10	12	5	6	7	9	3	18	14	17	17	10	6
$S_{rar}^{**}$	ZU	3.57	4.48	4.08	3.07	3.78	1.96	2.58	3.11	2.97	2.38	2	1.51	3.26	2.07
	ZR	4.49	3.65	3.78	3.55	3.63	3.8	4.04	3	5.21	4.18	2.82	2.68	5.43	2.73
$N^{**}$	ZU	391	482	172	32	32	149	73	59	231	222	1560	388	133	214
	ZR	603	738	521	34	143	128	127	11	515	751	1851	1558	228	883
$N_{exot}$	ZU	312	305	110	25	23	140	70	56	210	208	1484	384	125	212
	ZR	403	600	393	20	46	55	109	5	259	353	1380	1354	129	155
$N_{nat}^*$	ZU	79	177	62	7	9	9	3	3	21	14	76	4	8	2
	ZR	200	138	128	14	97	73	18	6	256	398	371	204	99	728

\*  $p < 0.05$ , \*\*  $p < 0.01$ ; all measures with significant differences are higher in RZ in comparison with UZ.

Luiz Gonzaga are located is characterized by a highly human-modified landscape, with few and small patches of natural vegetation. Some authors point out that local biodiversity may be affected by the regional amount of remnant vegetation, with a fragmentation threshold below which diversity becomes dependent of patch size (Pardini *et al.*, 2010).

Here, no significant difference between UZ and RZ in the abundance of exotic species ( $N_{exot}$ ) was observed, but the number of specimens of endemic species from Neotropics ( $N_{nat}$ ) was significantly lower in UZ (Table 4). This suggests that the forest patch in RZ can be easily invaded by at least some exotic species, probably because it is a small fragment of forest, in a region quite fragmented by agricultural cultures. On the other hand, for most Neotropical species, it is difficult to survive in face of the expansion of urban environments over natural ones.

In general, the observed species richness ( $S_{obs}$ ) was higher in the period between June and November (roughly winter and spring), varying from 5 to 11 in UZ and from 10 to 18 in RZ, while it was lower from December to May (roughly summer and autumn), with 3 to 7 species in UZ and 3 to 9 in RZ (Table 4). A higher richness in drosophilid assemblages during winter was also found by Torres & Madi-Ravazzi (2006) in the state of São Paulo. In São Luiz Gonzaga, a severe dry and hot period during summer may have caused a negative effect on drosophilidae diversity.

The expressive abundance of *D. simulans* seemed to affect the indexes of heterogeneity ( $H'$ ) and evenness ( $E_{var}$ ) of the assemblage. The highest value of  $E_{var}$  was found in May 2008 ( $E_{var}$  RZ = 0.963 and  $E_{var}$  UZ = 0.525), period of autumn (Table 4), when the

species richness and the relative abundance of *D. simulans* were lower in comparison to other months, which was observed again in summer periods. In RZ, the highest heterogeneity was observed during June 2008 ( $H' = 1.921$ ), autumn, as opposed to the findings by Benado & Brncic (1994), in Chile, in a study that reported the lowest diversity in the same period. In UZ, the highest heterogeneity was found in October 2007 ( $H' = 1.569$ ), spring, as found by De Toni *et al.* (2007) in Santa Catarina. The lowest diversity was found in both sites in September of 2008, winter, with  $H' = 0.252$  in RZ and  $H' = 0.832$  in UZ. This low diversity is due to the high dominance of *D. simulans*. The dominance of one species acting negatively on community diversity was noticed by De Toni *et al.* (2007) and Brncic *et al.* (1985), with a large dominance of *D. willistoni* and *D. simulans* in their collections, respectively.

Table 5 shows the correlations between the diversity measures in each site. In both sites,  $S_{obs}$  showed positive and significant correlation with  $N$ , while  $S_{rar}$  was correlated with  $H'$ . In UZ,  $H'$ ,  $E_{var}$  and  $S_{rar}$  showed a statistically significant positive correlation, while in ZR,  $E_{var}$  was negatively correlated with  $S_{obs}$  and  $N$ .

In spite of the interference caused by the dominance of *D. simulans*, the time component was a determinant in the diversity of the assemblage, although more than half of the diversity could not be explained by the analyzed components (Table 6). The time component in the present study showed a relatively high contribution to the diversity in comparison with other similar studies (Silva *et al.*, 2005; Gottschalk *et al.*, 2007; Schmitz *et al.*, 2010). These studies, however, performed just seasonal collections, and studies based on monthly collections, like the present one, are not

**TABLE 5:** Linear correlation  $r$  between  $H'$ ,  $E_{var}$ ,  $S_{obs}$ ,  $S_{nr}$  and  $N$  in the drosophilid assemblages of urban (bottom left) and rural (top right) zones of São Luiz Gonzaga, RS, Brazil.

	$H'$	$E_{var}$	$S_{nr}$	$S_{obs}$	$N$
$H'$		-0.055726	0.98521***	0.20562	-0.44076
$E_{var}$	0.59474*		-0.067533	-0.55521*	-0.55744*
$S_{nr}$	0.97521***	0.68576**		0.19631	-0.43809
$S_{obs}$	0.23405	-0.1764	0.25631		0.71515**
$N$	-0.22535	-0.417	-0.25384	0.64962*	

\*  $p < 0.05$ ; \*\*  $p < 0.01$ ; \*\*\*  $p < 0.001$ .

common. These results stress the great effect of the temporal changes in drosophilid assemblages that, especially in areas with a marked seasonal regime, as the Pampas, surpass the spatial effects, even when contrasting environments are compared.

### Similarity analysis

In general, the present results show that species composition, as measured by the Jaccard coefficient (Fig. 2), is markedly affected by seasonality, being more similar in the colder months of the year. All samples taken between June and October (late autumn, winter and early spring) clustered together within a group sharing at least 40% of the species, while all the samples from January to May (summer and early autumn) lied outside this group. The months of November and December (late spring) seem to be a transition period, as some samples clustered in the coldest period and other samples in the hottest period. The environment (urban or forested) was also shown to be an important factor, since some clustering between sites can be observed, but to a lesser extent than temporal factors.

The Morisita index showed that when the structure of the assemblage is considered, the effect of seasonality is evident, since samples clustered into similar groups in consecutive periods and in the same season, showing the seasonal preference of some species again (Fig. 3). Almost all samples taken showed a high abundance of *D. simulans*, so the clustering was more influenced by secondary species. The first group of samples to split off the cluster is composed roughly by samples collected in hot months in the urban zone, and can be characterized by a relatively high abundance of *Z. indianus*. The second group to split is constituted exclusively by samples from the forest patch, marked by a higher relative abundance of *D. polymorpha*. Some summer samples within this group formed a subcluster with, besides *D. polymorpha*, a higher representativeness of *D. willistoni*. The remaining samples, mainly urban samples, but also

**TABLE 6:** Contribution of temporal and spatial components to the diversity in the assemblages of drosophilids in São Luiz Gonzaga, RS, Brazil.

	$H'$	%
Temporal	0,3991	25,4
Espacial	0,0906	5,77
Not explained	1.0815	68.83
Total	1.5713	100

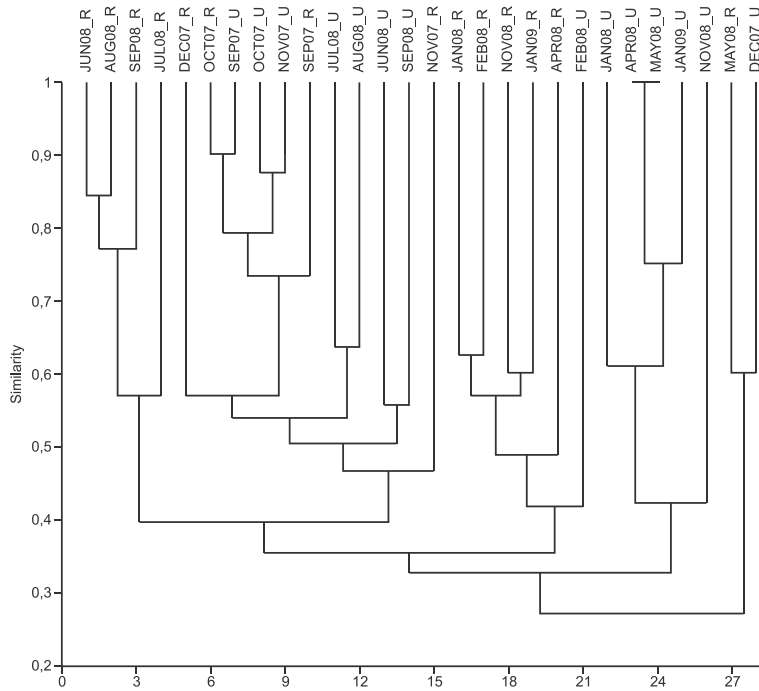
several samples from the forest patch, are those that showed the higher dominance of *D. simulans*. Among them, a group of samples collected in spring clustered together and have in common a relatively high abundance of *D. busckii* and *D. mercatorum*.

### Concluding remarks and future directions

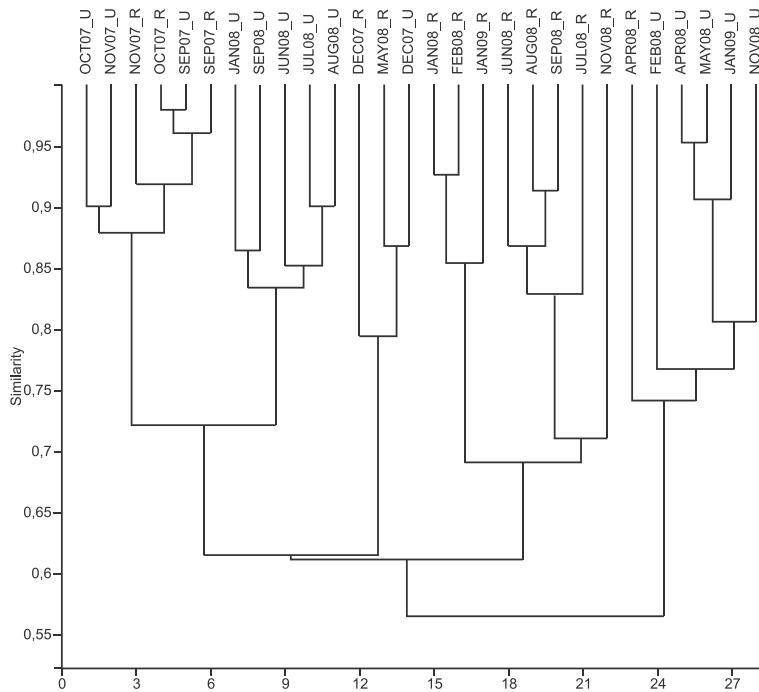
Studies that compared drosophilids assemblages in forested areas with urban ones have consistently found marked differences in relative species abundances, but not always in diversity (Avondet *et al.*, 2003, Gottschalk *et al.*, 2007). However, the present study is the second recent survey to strongly suggest a marked biodiversity loss with the expansion of urban landscapes in detriment of natural ones in the countryside of the state of Rio Grande do Sul. Hochmüller *et al.* (2010) found lower species richness in the urban area of Cruz Alta, when compared to a forest remnant nearby. The present study found the same pattern in São Luiz Gonzaga. Additionally, we could detect a reduction in diversity also when it was measured by Shannon-Wiener index and species richness by rarefaction. It is notable too that 70% of the Neotropical species showed a preference for the forest fragment, with a significant reduction in abundance of native species in the city, reinforcing the importance of natural environments to maintain the regional biodiversity. Similar results were relatively well documented in the Cerrado biome (Ferreira & Tidon, 2005, Tidon, 2006, Mata *et al.*, 2010), where it was also verified that many Neotropical species that occur in natural environments were absent in the city, while others decreased in abundance as the degree of urbanization increased. The Cerrado and the Pampa biomes are similar in being constituted by natural formations of forests inserted in a landscape dominated predominantly by savanna-like environments. Future studies, especially in the Pampa, could indicate if the patterns of response of the biodiversity to landscape modification are similar in the two biomes.

The forest remnant surveyed in the present study is a very small and disturbed fragment, inside an





**FIGURE 2:** UPGMA dendrogram showing the similarity in species composition of monthly samples of drosophilids in urban (U) and rural (R) zone in São Luiz Gonzaga, RS, Brazil, according to Jaccard similarity index.



**FIGURE 3:** UPGMA dendrogram showing the similarity in species abundances of monthly samples of drosophilids in urban (U) and rural (R) zone in São Luiz Gonzaga, RS, Brazil, according to Morisita index.

agricultural landscape, and, as we noticed, although still a refuge for Neotropical species absent in the city, is also highly invaded by some introduced species, bioindicators of disturbed environments. Considering

that the assemblages of drosophilids in undisturbed natural environments of the Pampa are still completely unknown, future studies are needed to assess the portion of the biodiversity that can have already

been lost in a landscape widely converted to agricultural fields. Although the impact of the urbanization on the natural assemblages is relatively well studied, the effects of the change of land use to agriculture and cattle raising are still little known.

## RESUMO

O Pampa brasileiro (extremo sul do país) está, atualmente, vastamente modificado devido ao aumento das atividades agrícolas. Em muitos lugares, apenas pequenos fragmentos de campo permanecem em uma paisagem agrícola. Drosophilidae (Diptera) tem sido amplamente utilizadas como bioindicadores para monitorar os efeitos das mudanças antropogênicas em ambientes naturais. Porém, a fauna de Drosophilidae no Bioma Pampa de ambientes naturais ou perturbados, ainda permanece amplamente desconhecida. O presente estudo é uma das primeiras tentativas de preencher esta lacuna, apresentando resultados de coletas mensais no município de São Luiz Gonzaga (28°24'28"S, 54°57'39"W), no Pampa brasileiro. Um inventário de espécies foi conduzido em dois ambientes contrastantes, uma zona urbana e um remanescente de floresta (zona rural). Em ambos os locais, armadilhas com banana fermentada foram usadas para capturar drosophilídeos adultos. A identificação foi feita através da morfologia externa e da terminália dos machos. No total, 13,379 drosophilídeos foram analisados (zona rural:  $N = 8,812$  and  $S_{obs} = 25$ ; zona urbana:  $N = 4,567$  and  $S_{obs} = 16$ ). No presente estudo, 16 (60%) das 26 espécies coletadas foram encontradas exclusivamente ou preferencialmente no fragmento de mata. O período de maior riqueza foi entre os meses de junho a novembro (inverno-primavera), e o período de menor riqueza foi de dezembro a maio (verão-outono). Uma análise de cluster pelo Coeficiente de Jaccard mostrou que a composição da assembléia muda ligeiramente quando o período do ano com temperaturas mais elevadas (janeiro-maio) é comparado com o período de temperaturas menos elevadas (junho-outubro). A abundância das espécies foi também altamente afetada pela sazonalidade, como revelou o Índice de Morisita, onde as amostras foram agrupadas em períodos consecutivos dentro de uma mesma estação, mostrando a preferência sazonal de algumas espécies. O componente tempo foi determinante na diversidade da assembléia, superando o efeito espacial. A forte redução na diversidade na área urbana quando comparada com o pequeno fragmento de floresta, torna evidente a importância do ambiente natural para a preservação da diversidade no bioma Pampa, atualmente com sua paisagem altamente alterada.

PALAVRAS-CHAVE: Bioma Pampa; Drosophilidae; Diversidade; Bioindicador.

## ACKNOWLEDGMENTS

We are grateful to members of the Laboratório de *Drosophila* (UFRGS) and to everyone from sector of laboratories of URI – Santo Ângelo, for helping us in the collections, identification and discussion and to CNPq and FAPERGS (10/0028-7) for grants and fellowships.

## REFERENCES

- AVONDET, J.L.; BLAIR, R.B.; BERG, D.J. & EBBERT, M.A. 2003. *Drosophila* (Diptera: Drosophilidae) response to changes in ecological parameters across an urban gradient. *Environmental Entomology*, 32:347-358.
- BÄCHLI, G.; VILELA, C.R.; ESCHER, A.S. & SAURA, A. 2004. The Drosophilidae (Diptera) of Fennoscandia and Denmark. *Fauna Entomologica Scandinavica*, 39:1-362.
- BEGON, M.; HARPER, J.L. & TOWNSEND, C.R. 1996. *Ecology: individual, populations and communities*. Blackwell, Cambridge.
- BENADO, M. & BRNCIC, D. 1994. An eight year phenological study of a local drosophilid community in Central Chile. *Zeitschrift für Zoologische Systematik und Evolutionsforschung*, 32:51-63.
- BENCKE, G.A. 2003. *Livro vermelho da fauna ameaçada de extinção no Rio Grande do Sul*. EDIPUCRS, Porto Alegre.
- BILENCA, D.N. & MIÑARRO, F.O. 2004. *Identificación de Áreas Valiosas de Pastizal (AVPs) em las Pampas y Campos de Argentina, Uruguay y sur de Brasil*. Fundación Vida Silvestre, Buenos Aires.
- BIZZO, L.; GOTTSCHALK, M.S.; DE TONI, D.C. & HOFMANN, P.R.P. 2010. Seasonal dynamics of a drosophilid (Diptera) assemblage and its potential as bioindicator in open environments. *Iheringia, Série Zoologia*, 100:185-191.
- BRNCIC, D.; BUDNIK, M. & GUINEZ, R. 1985. An analysis of a Drosophilidae community in Central Chile during a three years period. *Journal of Zoology Systematic and Evolution*, 23:90-100.
- CASTRO, F.L. & VALENTE, V.L.S. 2001. *Zaprionus indianus* is invading Drosophilid communities in the southern Brazilian city of Porto Alegre. *Drosophila Information Service*, 84:15-17.
- COLLARES, J.E.R. 2006. *Mapa de biomas do Brasil*. In: Mariath, J.E.A. & Santos, R.P. *Os avanços da Botânica no início do século XXI: morfologia, fisiologia, taxonomia, ecologia e genética*. Sociedade Botânica do Brasil, Porto Alegre. p. 336-339. (Simposios e Congresso Nacional de Botânica, 57°. Conferências Plenárias)
- DE TONI, D.C.; GOTTSCHALK, M.S.; CORDEIRO, J.; HOFMANN, P.R.P. & VALENTE, V.L.S. 2007. Study of the Drosophilidae (Diptera) communities on Atlantic Forest islands of Santa Catarina State, Brazil. *Neotropical Entomology*, 36:356-375.
- DE TONI, D.C.; HOFMANN, P.R.P.; VALENTE, V.L.S. 2001. First record of *Zaprionus indianus* (Diptera, Drosophilidae) in the State of Santa Catarina, Brazil. *Biotemas, Florianópolis*, 14(1):71-85.
- DOBZHANSKY, T. & PAVAN, C. 1950. Local and seasonal variations in relative frequencies of species of *Drosophila* in Brazil. *Journal of Animal Ecology*, 19:1-14.
- FERNÁNDEZ IRIARTE, P.J. & LÓPEZ, M.M. 1995. Variación estacional de *Drosophila* spp en Mar del Plata, Argentina. *Oecologia, Australis*, 5:111-116.
- FERREIRA, L.B. & TIDON, R. 2005. Colonizing potential of Drosophilidae (Insecta, Diptera) in environments with

- different grades of urbanization. *Biodiversity and Conservation*, 14:1809-1821.
- FRANCK, G. & VALENTE, V.L.S. 1985. Study on the fluctuation in *Drosophila* populations of Bento Gonçalves, RS, Brazil. *Revista Brasileira de Biologia*, 45:133-141.
- GARCIA, A.C.L.; VALIATI, V.H.; GOTTSCHALK, M.S.; ROHDE, C. & VALENTE, V.L.S. 2008. Two decades of colonization of the urban environment of Porto Alegre, southern Brazil, by *Drosophila paulistorum* (Diptera, Drosophilidae). *Iheringia, Série Zoologia*, 98:329-338.
- GARCIA, C.F.; HOCHMÜLLER, C.J.C.; VALENTE, V.L.S. & SCHMITZ, H.J. 2012. Drosophilid Assemblages at Different Urbanization Levels in the City of Porto Alegre, State of Rio Grande do Sul, Southern Brazil. *Neotropical Entomology*, 41:1-12.
- GOÑI, B.; MARTÍNEZ, M.E. & DAGUER, P. 1997. Studies of two *Drosophila* (Diptera, Drosophilidae) communities from urban Montevideo, Uruguay. *Revista Brasileira de Entomologia*, 41:89-93.
- GOÑI, B.; MARTÍNEZ, M.E.; VALENTE, V.L.S. & VILELA, C.R. 1998. Preliminary data on the *Drosophila* species (Diptera, Drosophilidae) from Uruguay. *Revista Brasileira de Entomologia*, 42:131-140.
- GOTTSCHALK, M.S.; DE TONI, D.C.; VALENTE, V.L.S. & HOFMANN, P.R.P. 2007. Changes in Brazilian Drosophilidae (Diptera) assemblages across an urbanisation gradient. *Neotropical Entomology*, 36:848-862.
- GOTTSCHALK, M.S.; HOFMANN, P.R.P. & VALENTE, V.L.S. 2008. Diptera, Drosophilidae: historical occurrence in Brazil. *Check List*, 4:485-518.
- HAMMER, Ø.; HARPER, D.A.T. & RYAN, P.D. 2001. PAST: Palaeontological Statistics software for education and data analysis. *Palaeontologia Electronica*, 4:1-9. Available at: <http://palaeo-electronica.org/2001\_1/past/issue1\_01.htm>. Accessed on: 04.2009.
- HOCHMÜLLER, C.J.; LOPES-DA-SILVA, M.; VALENTE, V.L.S. & SCHMITZ, H.J. 2010. The drosophilid fauna (Diptera, Drosophilidae) of the transition between the Pampa and Atlantic Forest Biomes in the state of Rio Grande do Sul, southern Brazil: first records. *Papéis Avulsos de Zoologia*, 50:285-295.
- IBGE. 2004. *Mapa de biomas do Brasil. Escala 1:5.000.000*. Disponível em: <www.ibge.gov.br/home/presidencia/noticias/noticia\_visualiza.php?id\_noticia=169>. Acesso em: 21 de julho de 2011.
- IBGE. 2006. *Produção Agrícola Municipal (Cereais, Leguminosas e Oleaginosas, 2005)*. Ministério do Planejamento, Orçamento e Gestão, Instituto Brasileiro de Geografia e Estatística (IBGE), Diretoria de Pesquisas, Coordenação de Agropecuária, Rio de Janeiro.
- KIVINEN, S. 2007. *Local and regional scale determinants of biodiversity patterns in boreal agricultural landscapes*. University of Turku, Finland. Tese de Doutorado
- KREBS, C.J. 1999. *Ecological Methodology*. Addison Wesley Longman, Menlo Park.
- MARTINS, M.B. 1987. Variação espacial e temporal de algumas espécies e grupos de *Drosophila* (Diptera) em duas reservas de matas isoladas, nas vizinhanças de Manaus (Amazonas, Brasil). *Boletim do Museu Paraense Emílio Goeldi*, 3:195-218.
- MATA, R.A.; MCGEOCH, M. & TIDON, R. 2010. Drosophilids (Insecta, Diptera) as Tools for Conservation Biology. *Brazilian Journal of Nature Conservation*, 8:60-65.
- MCÁLEECE, N.; LAMBSHEAD, P.J.D.; PATERSON, G.L.J. & GAGE, J.G. 1997. *Biodiversity professional*. Beta-Version. The Natural History Museum and the Scottish Association for Marine Sciences, London.
- ODUM, E.P. 1988. *Ecologia*. Ed. Guanabara, Rio de Janeiro.
- PARDINI, R.; BUENO, A.; GARDNER, T.A.; PRADO, P.I. & METZGER, J.P. 2010. *Beyond the Fragmentation Threshold Hypothesis: Regime Shifts in Biodiversity Across Fragmented Landscapes*. Disponível em: <www.plosone.org/article/info%3Adoi%2F10.1371%2Fjournal.pone.0013666>. Acesso em: 13 de abril de 2011.
- PETERSEN, J.A. 1960. Studies of the ecology of the genus *Drosophila*. I. Collections in two different life zones and seasonal variations in Rio Grande do Sul, Brazil. *Revista Brasileira de Biologia*, 20:3-16.
- PORTO, M.L. 2002. Os Campos Sulinos: sustentabilidade e manejo. *Ciência & Ambiente*, 24:119-128.
- PROBIO. 2007. *Cobertura vegetal do bioma Pampa. Relatório Técnico*. Centro de Ecologia. Universidade Federal do Rio Grande do Sul – UFRGS, Porto Alegre.
- RISSE, P.G. 1997. *Diversidade em e entre prados*. Nova Fronteira, Rio de Janeiro.
- RUSZCZYK, A. 1986/1987. Análise da cobertura vegetal da cidade de Porto Alegre, RS. *Revista Brasileira de Botânica*, 9:225-229.
- SAAVEDRA, C.C.R.; CALLEGARI-JACQUES, S.M.; NAPP, M. & VALENTE, V.L.S. 1995. A descriptive and analytical study of four neotropical drosophilid communities. *Journal of Zoology Systematic and Evolution*, 33:62-74.
- SCHMITZ, H.J.; HOFMANN, P.R.P. & VALENTE, V.L.S. 2010. Assemblages of drosophilids (Diptera, Drosophilidae) in mangrove forests: community ecology and species diversity. *Iheringia, Série Zoologia*, 100(2):133-140.
- SCHMITZ, H.J.; VALENTE, V.L.S. & HOFMANN, P.R.P. 2007. Taxonomic survey of Drosophilidae (Diptera) from mangrove forests of Santa Catarina Island, Southern Brazil. *Neotropical Entomology*, 36:53-64.
- SENE, F.M.; VAL, F.C.; VILELA, C.R. & PEREIRA, M.A.Q.R. 1980. Preliminary data on the geographical distribution of *Drosophila* species within morphoclimatic domains of Brazil. *Papéis Avulsos de Zoologia*, 33:315-326.
- SILVA, N.M.; FANTINEL, C.C.; VALENTE, V.L.S. & VALIATI, V.H. 2005. Population dynamics of the invasive species *Zaprionus indianus* (Gupta) (Diptera: Drosophilidae) in communities of drosophilids of Porto Alegre city, Southern of Brazil. *Neotropical Entomology*, 34:363-374.
- TIDON, R. 2006. Relationships between drosophilids (Diptera, Drosophilidae) and the environment in two contrasting tropical vegetations. *Biological Journal of the Linnean Society*, 87:233-247.
- TIDON, R. & SENE, F.M. 1988. A trap that retains and keeps *Drosophila* alive. *Drosophila Information Service*, 67:2-89.
- TORRES, F.R. & MADI-RAVAZZI, L. 2006. Seasonal variation in natural populations of *Drosophila* spp. (Diptera) in two woodlands in the State of São Paulo, Brazil. *Iheringia, Série Zoologia*, 96:437-444.
- VALENTE, V.L.S. & ARAÚJO, A.M. 1991. Ecological aspects of *Drosophila* species in two contrasting environments in southern Brazil (Diptera: Drosophilidae). *Revista Brasileira de Entomologia*, 35:237-253.
- VILELA, C.R. 1999. Is *Zaprionus indianus* Gupta, 1970 (Diptera, Drosophilidae) currently colonising the Neotropical Region? *Drosophila Information Service*, 82:37-38.

Aceito em: 10.03.2012

Publicado em: 29.06.2012

## EDITORIAL COMMITTEE

**Publisher:** Museu de Zoologia da Universidade de São Paulo. Avenida Nazaré, 481, Ipiranga, CEP 04263-000, São Paulo, SP, Brasil.

**Editor-in-Chief:** Carlos José Einicker Lamas, Serviço de Invertebrados, Museu de Zoologia, Universidade de São Paulo, Caixa Postal 42.494, CEP 04218-970, São Paulo, SP, Brasil. E-mail: [editormz@usp.br](mailto:editormz@usp.br).

**Associate Editors:** Mário César Cardoso de Pinna (*Museu de Zoologia, Universidade de São Paulo, Brasil*); Luis Fábio Silveira (*Museu de Zoologia, Universidade de São Paulo, Brasil*); Marcos Domingos Siqueira Tavares (*Museu de Zoologia, Universidade de São Paulo, Brasil*); Sérgio Antonio Vanin (*Instituto de Biociências, Universidade de São Paulo, Brasil*); Hussam El Dine Zaher (*Museu de Zoologia, Universidade de São Paulo, Brasil*).

**Editorial Board:** Rüdiger Bieler (*Field Museum of Natural History, U.S.A.*); Walter Antonio Pereira Boeger (*Universidade Federal do Paraná, Brasil*); Carlos Roberto Ferreira Brandão

(*Universidade de São Paulo, Brasil*); James M. Carpenter (*American Museum of Natural History, U.S.A.*); Ricardo Macedo Corrêa e Castro (*Universidade de São Paulo, Brasil*); Mario de Vivo (*Universidade de São Paulo, Brasil*); Marcos André Raposo Ferreira (*Museu Nacional, Rio de Janeiro, Brasil*); Darrel R. Frost (*American Museum of Natural History, U.S.A.*); William R. Heyer (*National Museum of Natural History, U.S.A.*); Ralph W. Holzenthal (*University of Minnesota, U.S.A.*); Adriano Brilhante Kury (*Museu Nacional, Rio de Janeiro, Brasil*); Gerardo Lamas (*Museo de Historia Natural "Javier Prado", Lima, Peru*); John G. Maisey (*American Museum of Natural History, U.S.A.*); Naércio Aquino Menezes (*Universidade de São Paulo, Brasil*); Christian de Muizon (*Muséum National d'Histoire Naturelle, Paris, France*); Nelson Papavero (*Universidade de São Paulo, Brasil*); James L. Patton (*University of California, Berkeley, U.S.A.*); Richard O. Prum (*University of Kansas, U.S.A.*); Olivier Rieppel (*Field Museum of Natural History, U.S.A.*); Miguel Trefaut Urbano Rodrigues (*Universidade de São Paulo, Brasil*); Randall T. Schuh (*American Museum of Natural History, U.S.A.*); Ubirajara Ribeiro Martins de Souza (*Universidade de São Paulo, Brasil*); Paulo Emilio Vanzolini (*Universidade de São Paulo, Brasil*); Richard P. Vari (*National Museum of Natural History, U.S.A.*).

## INSTRUCTIONS TO AUTHORS - (April 2007)

**General Information:** *Papéis Avulsos de Zoologia (PAZ)* and *Arquivos de Zoologia (AZ)* cover primarily the fields of Zoology, publishing original contributions in systematics, paleontology, evolutionary biology, ontogeny, faunistic studies, and biogeography. *Papéis Avulsos de Zoologia* and *Arquivos de Zoologia* also encourage submission of theoretical and empirical studies that explore principles and methods of systematics.

All contributions must follow the International Code of Zoological Nomenclature. Relevant specimens should be properly curated and deposited in a recognized public or private, non-profit institution. Tissue samples should be referred to their voucher specimens and all nucleotide sequence data (aligned as well as unaligned) should be submitted to GenBank ([www.ncbi.nih.gov/Genbank](http://www.ncbi.nih.gov/Genbank)) or EMBL ([www.ebi.ac.uk](http://www.ebi.ac.uk)).

**Peer Review:** All submissions to *Papéis Avulsos de Zoologia* and *Arquivos de Zoologia* are subject to review by at least two referees and the Editor-in-Chief. All authors will be notified of submission date. Authors may suggest potential reviewers. Communications regarding acceptance or rejection of manuscripts are made through electronic correspondence with the first or corresponding author only. Once a manuscript is accepted providing changes suggested by the referees, the author is requested to return a revised version incorporating those changes (or a detailed explanation of why reviewer's suggestions were not followed) within fifteen days upon receiving the communication by the editor.

**Proofs:** Page-proofs with the revised version will be sent to e-mail the first or corresponding author. Page-proofs *must be returned to the editor, preferentially within 48 hours*. Failure to return the proof promptly may be interpreted as approval with no changes and/or may delay publication. Only necessary corrections in proof will be permitted. Once page proof is sent to the author, further alterations and/or significant additions of text are permitted only at the author's expense or in the form of a brief appendix (note added in proof).

**Submission of Manuscripts:** Manuscripts should be sent to the **SciELO Submission** (<http://submission.scielo.br/index.php/paz/login>), along with a submission letter explaining the importance and originality of the study. Address and e-mail of the corresponding author must be always updated since it will be used to send the 50 reprints in titled by the authors. Figures, tables and graphics **should not** be inserted in the text. Figures and graphics should be sent in separate files with the following formats: ".JPG" and ".TIF" for figures, and ".XLS" and ".CDR" for graphics, with 300 DPI of minimum resolution. Tables should be placed at the end of the manuscript.

Manuscripts are considered on the understanding that they have not been published or will not appear elsewhere in substantially the same or abbreviated form. The criteria for acceptance of articles are: quality and relevance of research, clarity of text, and compliance with the guidelines for manuscript preparation.

Manuscripts should be written preferentially in English, but texts in Portuguese or Spanish will also be considered. Studies with a broad coverage are encouraged to be submitted in English. All manuscripts should include an abstract and key-words in English and a second abstract and key-words in Portuguese or Spanish.

Authors are requested to pay attention to the instructions concerning the preparation of the manuscripts. Close adherence to the guidelines will expedite processing of the manuscript.

**Manuscript Form:** Manuscripts should not exceed 150 pages of double-spaced, justified text, with size 12 and source Times New Roman (except for symbols). Page format should be A4 (21 by 29.7 cm), with 3 cm of margins. The pages of the manuscript should be numbered consecutively.

The text should be arranged in the following order: **Title Page, Abstracts with Key-Words, Body of Text, Literature Cited, Tables, Appendices, and Figure Captions**. Each of these sections should begin on a new page.

(1) **Title Page:** This should include the **Title, Short Title, Author(s) Name(s) and Institutions**. The title should be concise and, where appropriate, should include mention of families and/or higher taxa. Names of new taxa should not be included in titles.

(2) **Abstract:** All papers should have an abstract in **English** and another in **Portuguese or Spanish**. The abstract is of great importance as it may be reproduced elsewhere. It should be in a form intelligible if published alone and should summarize the main facts, ideas, and conclusions of the article. Telegraphic abstracts are strongly discouraged. Include all new taxonomic names for referencing purposes. Abbreviations should be avoided. It should not include references. Abstracts and key-words should not exceed 350 and 5 words, respectively.

(3) **Body of Text:** The main body of the text should include the following sections: **Introduction, Material and Methods, Results, Discussion, Conclusion, Acknowledgments, and References at end**. Primary headings in the text should be in capital letters, in bold and centered. Secondary headings should be in capital and lower case letters, in bold and centered. Tertiary headings should be in capital and lower case letters, in bold and indented at left. In all the cases the text should begin in the following line.

(4) **Literature Cited:** Citations in the text should be given as: Silva (1998) *or* Silva (1998:14-20) *or* Silva (1998: figs. 1, 2) *or* Silva (1998a, b) *or* Silva & Oliveira (1998) *or* (Silva, 1998) *or* (Rangel, 1890; Silva & Oliveira, 1998a, b; Adams, 2000) *or* (Silva, *pers. com.*) *or* (Silva *et al.*, 1998), the latter when the paper has three or more authors. The reference need not be cited when authors and date are given only as authority for a taxonomic name.

(5) **References:** The literature cited should be arranged strictly alphabetically and given in the following format:

- **Journal Article** - Author(s). Year. Article title. *Journal name*, volume: initial page-final page. Names of journals must be spelled out in full.
- **Books** - Author(s). Year. *Book title*. Publisher, Place.
- **Chapters of Books** - Author(s). Year. Chapter title. *In*: Author(s) ou Editor(s), *Book title*. Publisher, Place, volume, initial page-final page.
- **Dissertations and Theses** - Author(s). Year. *Dissertation title*. (Ph.D. Dissertation). University, Place.
- **Electronic Publications** - Author(s). Year. *Title*. Available at: <electronic address>. Access in: date.

**Tables:** All tables must be numbered in the same sequence in which they appear in text. Authors are encouraged to indicate where the tables should be placed in the text. They should be comprehensible without reference to the text. Tables should be formatted with vertical (portrait), not horizontal (landscape), rules. In the text, tables should be referred as Table 1, Tables 2 and 4, Tables 2-6. Use "TABLE" in the table heading.

**Illustrations:** Figures should be numbered consecutively, in the same sequence that they appear in the text. Each illustration of a composite figure should be identified by capital letters and referred in the text as: Fig. 1A, Fig. 1B, for example. When possible, letters should be placed in the left lower corner of each illustration of a composite figure. Hand-written lettering on illustrations is unacceptable. Figures should be mounted in order to minimize blank areas between each illustration. Black and white or color photographs should be digitized in high resolution (300 DPI at least). Use "Fig(s)," for referring to figures in the text, but "FIGURE(S)" in the figure captions and "fig(s)," when referring to figures in another paper.

---

**Responsibility:** Scientific content and opinions expressed in this publication are sole responsibility of the respective authors.  
**Copyrights:** The journals *Papéis Avulsos de Zoologia* and *Arquivos de Zoologia* are licensed under a Creative Commons Licence (<http://creativecommons.org>).

---

For other details of manuscript preparation of format, consult the CBE Style Manual, available from the Council of Science Editors ([www.councilscienceeditors.org/publications/style](http://www.councilscienceeditors.org/publications/style)).  
*Papéis Avulsos de Zoologia* and *Arquivos de Zoologia* are publications of the Museu de Zoologia da Universidade de São Paulo ([www.mz.usp.br](http://www.mz.usp.br)).  
Always consult the Instructions to Authors printed in the last issue or in the electronic home pages: [www.scielo.br/paz](http://www.scielo.br/paz) or [www.mz.usp.br/publicacoes](http://www.mz.usp.br/publicacoes).