

Parasitological and immunological diagnoses from feces of captive-bred snakes at Vital Brazil Institute

Diagnóstico parasitológico e imunológico em fezes de serpentes cativas do Instituto Vital Brazil

Janaína Lima de Souza¹; Alynne da Silva Barbosa^{1*}; Adriana Prado Vazon¹; Claudia Maria Antunes Uchôa¹; Beatriz Coronato Nunes¹; Myrian Bandeira Vianna Cortez²; Valmir Laurentino da Silva³; Leonora Brazil Más⁴; Aníbal Rafael Melgarejo⁴; Otilio Machado Pereira Bastos¹

¹Laboratório Parasitologia, Departamento de Microbiologia e Parasitologia, Instituto Biomédico, Universidade Federal Fluminense – UFF, Niterói, RJ, Brasil

²Laboratório de Microbiologia Ambiental, Departamento de Microbiologia e Parasitologia, Instituto Biomédico, Universidade Federal Fluminense – UFF, Niterói, RJ, Brasil

³Laboratório de Imunodiagnóstico, Departamento de Ciências Biológicas – DCB, Escola Nacional de Saúde Pública Sérgio Arouca – ENSP, Fundação Oswaldo Cruz – FIOCRUZ, Rio de Janeiro, RJ, Brasil

⁴Divisão de Zoologia Médica, Instituto Vital Brazil, Niterói, RJ, Brasil

Received July 4, 2013

Accepted March 5, 2014

Abstract

Fecal samples from 56 snakes at the Vital Brazil Institute, in the city of Niterói, Rio de Janeiro, were tested using the sedimentation and flotation techniques to investigate the evolutionary forms of parasites such as helminths and protozoa, and using enzyme immunoassay techniques to detect antigens of *Cryptosporidium* sp. and *Giardia* sp. Among the animals tested, 80.3% were positive for parasites. Out of these, there were 16 *Bothrops jararaca*, 16 *B. jararacussu* and 13 *Crotalus durissus*. The prevalence of parasitic nematodes was 41.1%, and nematodes were found in all three snake species. Among these, the most frequent finding was eggs of *Kalicephalus* sp., which were diagnosed in 25% of the snakes. The positivity for protozoa detected using parasite concentration techniques was 75%, including oocysts of *Caryospora* sp. in 75%, cysts with morphology similar to *Giardia* sp. 3.6%, amoeboid cysts in 41.1% and unsporulated coccidia oocysts in 8.9%. Immunoassays for *Cryptosporidium* sp. antigens produced positive findings in 60.7%. Pseudoparasites were detected in 64.3%. These results show that there is a need to improve the sanitary handling of captive-bred snakes, and also for the animal house that supplies rodents to feed them. The results also highlight that diagnostic tests should be performed periodically on stool specimens from captive-bred snakes.

Keywords: Antigens, ELISA, nematode parasites, snake, protozoa.

Resumo

Foram analisadas amostras fecais de 56 serpentes do Instituto Vital Brazil, Niterói, Rio de Janeiro, por técnicas de sedimentação e flutuação, para pesquisa de formas evolutivas de parasitos, como helmintos e protozoários, e utilizando técnica imunoenzimática para detecção de antígenos de *Cryptosporidium* sp. e *Giardia* sp. Dos animais estudados, 80,3% foram positivos para parasitos, dos quais 16 pertenciam à espécie *Bothrops jararaca*, 16 à *B. jararacussu* e 13 à *Crotalus durissus*. A prevalência de nematódeos parasitos foi de 41,1%, sendo evidenciados nas três espécies de serpentes. Dentre estes, o mais frequente foi o encontro de ovos de *Kalicephalus* sp., diagnosticado em 25% das serpentes. A positividade para protozoários detectados pelas técnicas de concentração foi de 75%, nas quais oocistos de *Caryospora* sp. foram detectados em 75%, cistos com morfologia similar a *Giardia* sp. em 3,6%, cistos de amebídeos em 41,1% e oocistos não esporulados de coccídios em 8,9%. Obteve-se positividade para antígenos de *Cryptosporidium* sp. por imunoensaio em 60,7%. Pseudoparasitos foram detectados em 64,3%. Estes resultados apontam para a necessidade de aprimoramento do manejo sanitário das serpentes cativas, bem como no biotério que fornece roedores para sua alimentação, destacando a realização periódica de diagnóstico nas amostras fecais de serpentes cativas.

Palavras-chave: Antígenos, ELISA, parasitos nematódeos, serpente, protozoários.

*Corresponding author: Alynne da Silva Barbosa

Laboratório Parasitologia, Departamento de Microbiologia e Parasitologia, Instituto Biomédico, Universidade Federal Fluminense – UFF, Rua Professor Hernani Melo, 101, São Domingos, CEP 24210-130, Niterói, RJ, Brasil

e-mail: alynnedsb@gmail.com; alynnedsb@vm.uff.br

Introduction

Snakes are susceptible to a wide array of parasites, which presents a major challenge to breeders (SILVA, 2000). These animals tend to present oligosymptomatic parasitism in their natural habitat, and symptomatic illnesses due to parasitism are only rarely found (SILVA et al., 2001).

In Brazil, the group of venomous snakes of medical interest includes the genera *Bothrops*, *Crotalus* and *Lachesis* in the family Viperidae, and the genus *Micrurus* in the family Elapidae (BRASIL, 2012). This country is home to the largest diversity of Viperidae belonging to the genus *Bothrops*, more commonly known as “jararaca” (MARTINS et al., 2001). Maintenance of snakes under captive conditions, especially venomous snakes, plays an important role in production of biopharmaceuticals and in research on toxinology (COSTA et al., 2005).

Nematodes such as *Kalicephalus* sp., a parasite infecting the esophagus, stomach and duodenum, are the most prevalent parasites in the digestive system of snakes. The severe infections caused by these helminths often lead to anorexia, with consequent reduction of body weight, and diarrheic, bloody and/or mucous stools (ARAÚJO et al., 1999). Some authors have reported that *Kalicephalus* sp., *Ophidascaris* sp. and *Rhabdias* sp. were detected through necropsy procedures (SILVA et al., 2001; DIAS et al., 2004). A few studies have detected protozoa, such as *Caryospora* sp., *Sarcocystis* sp. and *Cryptosporidium* sp. (O'DONOGHUE, 1995; KARASAWA et al., 2002; GREGO et al., 2004).

Rubião (1999) tested 75 fecal samples from snakes at the Vital Brazil Institute, in Niterói, state of Rio de Janeiro, and found 34 positive results for nematodes (45%). Among these, *Rhabdias* sp. was the most common, followed by *Kalicephalus* sp. and *Ophidascaris* sp. Also through analyzing fecal samples, Araújo et al. (1999) found eggs of *Ophidascaris*, *Kalicephalus* and *Oxyuris*. Furthermore, reports in the literature have also indicated that pseudoparasites may be present, likely to have come from the animals ingested as food. The pseudoparasites most often reported in snakes have been *Syphacia* sp., *Hymenolepis* sp. and *Aspiculurus* sp. (RUBIÃO, 1999; RADHAKRISHNAN et al., 2009).

Research on the infectious, non-infectious and parasitic diseases that affect captive-bred snakes is a matter of some importance, since this serves as input for improving snake health conditions and optimizing venom production (IB, 2011). The present study aimed to evaluate the presence of evolutionary forms of parasites such as helminths and protozoa, and antigens of *Giardia* sp. and *Cryptosporidium* sp., in fecal samples from captive-bred snakes at the Vital Brazil Institute, in the city of Niterói, Rio de Janeiro, Brazil.

Materials and Methods

Ethical considerations

The tests were performed on fecal samples from captive-bred snakes that were reared separately, for maintenance purposes, in corrugated cardboard-lined plastic boxes, belonging to the Vital Brazil Institute. This study was approved by the Ethics Committee

on Animal Use of the Fluminense Federal University (Universidade Federal Fluminense, UFF), under protocol no. 82/2011.

Handling snakes at the Institute

At the Vital Brazil Institute, snakes are kept in captivity in three rooms for the duration of their lives: one for *Bothrops jararaca* and *Crotalus durissus*, the second for the *Bothrops* genus and the third one for breeding assorted ophidian genera. The animals used for feeding the snakes are reared and supplied by the central animal house of the Vital Brazil Institute. The snakes are routinely subjected to antiparasitic treatment, in which an ivermectin solution (IVOMEC®) is administered. The diluent for this is glycol propylene, at a dosage of 0.01 mL for each 50 g of weight, applied subcutaneously applied during the quarantine period, after arrival at the Institute.

Fecal samples

The study involved 56 snakes that were kept in captivity at the Vital Brazil Institute, of which 19 were *Bothrops jararaca*, 20 were *Bothrops jararacussu* and 17 were *Crotalus durissus*. The fecal samples were collected by means of a disposable plastic spatula from the maintenance box cardboard lining on different days, amounting to two samples per animal.

After sample collection, the material was placed in a plastic container without any preservative agent and was cold-stored (4 °C to 8 °C) in an insulated container. It was then sent to the Parasitology Laboratory of the Fluminense Federal University's Biomedical Institute. Each fecal sample was processed separately, and the results were grouped per two samples from each single animal.

Laboratory tests on fecal samples

All the samples were initially processed and homogenized in 10 mL of phosphate-buffered saline solution [PBS; 0.1 M; pH = 7.2], gauze-filtered and transferred to a conical-bottom glass for 24-hour sedimentation. The supernatant was disposed of and the sediment was adjusted for a final volume of 7 mL, which was aliquoted into five portions, namely: 0.5 mL in Eppendorf microtubes for investigating *Cryptosporidium* sp. and *Giardia* sp. antigens using a commercial ELISA kit (enzyme immunoassay); 1.0 mL in Eppendorf microtubes for ELISA storage; 1.0 mL for the Ritchie (1948) technique, as modified by Young et al. (1979); 1.0 mL for Sheather (1923), as modified by Huber et al. (2003); 1.0 mL for Willis (1921); 1.5 mL for storage, adding 3 mL of Railliet & Henry's solution. The sedimentation and flotation techniques used in this study show sensitivity for detection of evolutionary forms of protozoa and helminths present in stool samples.

The slides to which parasitological techniques were applied were read and photomicrographed using an Olympus® BX 41 optical microscope, initially at 100% magnification, and then at 400% magnification for confirmation. This microscope was coupled to a Samsung® SDC415 digital camera with Honestech® PVR capture software. To measure the evolutionary forms, an Olympus® CH30

optical microscope at 400% magnification was used, along with an Olympus® SWH ocular micrometer.

The samples in Eppendorf microtubes were processed using the ELISA method, with the aim of increasing the detection of cysts of *Giardia* sp. and *Cryptosporidium* sp. Commercial kits for detecting *Giardia* and *Cryptosporidium* antigens in stools through ELISA microwell assays (IVD Research, Inc.®) were also used. Enzyme immunoassays were carried out in accordance with the manufacturer's guidelines, considering the diluted or diarrheic samples as the parameter. The plates were read using an ELISA reader (ThermoPlate® multiplate reader), which was gauged according to wavelength, in keeping with the technical standards recommended by the manufacturer.

Results

Out of the 56 animals tested, 45 (80.3%) were positive for evolutionary forms of parasites of the pulmonary or gastrointestinal tract of snakes. Among these, there were 16 *B. jararaca*, 16 *B.*

jararacussu and 13 *C. durissus*. *Caryospora* sp. was the most frequent parasite, found in 42/56 (75%) of the animals.

The prevalence of evolutionary forms of parasitic nematodes was 41.1% (23/56), and these nematodes were found in three of the snake species tested. *Kalicephalus* sp. was the predominant helminth (Figure 1A), detected in 14/56 (25%). Eggs of species in the family Ascaridae, superfamily Rhabditoidea (Figure 1B), and larvae of nematodes were found. It was found that 42/56 (75%) of the snakes were positive for *Caryospora* sp. oocysts (Figure 1D): 15 of the species *B. jararaca*, 13 *B. jararacussu* and 14 *C. durissus*. *Sarcocystis* sp. (Figure 1C) was detected in 6/56 (10.7%) of the snakes: three of the species *B. jararaca*, one *B. jararacussu* and two *C. durissus* species. Cyst morphology similar to *Giardia* sp. was also detected in 2/56 (3.6%), in the species *B. jararaca*, as well as amoeboid cysts in 23/56 (41.1%) and unsporulated coccidian oocysts in 5/56 (8.9%) of the animals (Table 1).

Evolutionary forms of pseudoparasites were detected in 36/56 (64.3%) of the snakes. The species *Rodentolepis* sp. was found in 12/56 (21.4%) of the animals, *Syphacia* sp. in 26/56 (46.4%) and *Aspiculuris* sp. in 8/56 (14.3%). Moreover, there was an association

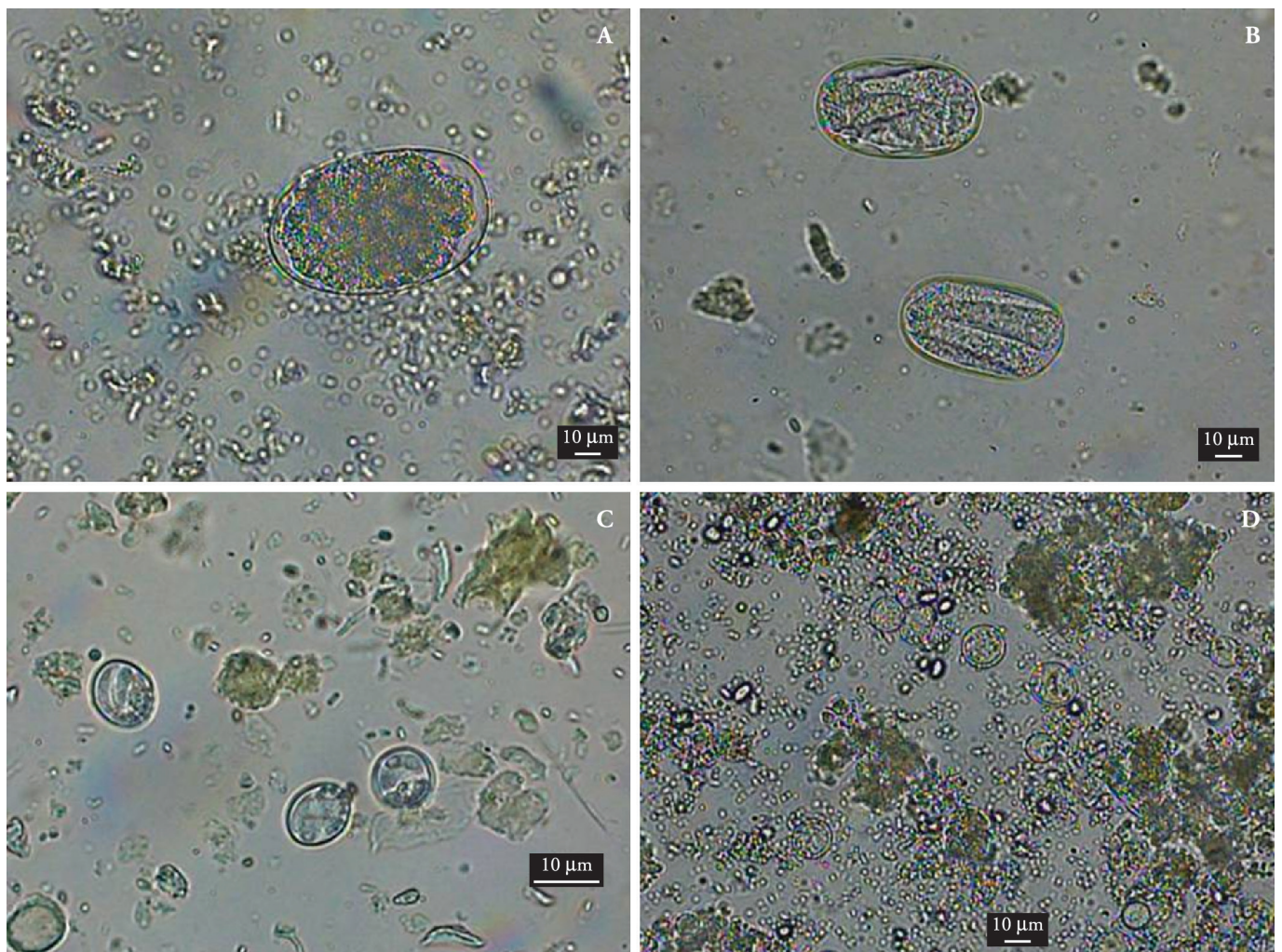


Figure 1. Illustration of evolutionary forms of the snakes parasites found by microscopic stool diagnosis techniques. A – *Kalicephalus* sp. (400 X) $63,6\pm 6,3 \mu\text{m} \times 37,4\pm 4,4 \mu\text{m}$; B – Rhabditoidea Superfamily (400 X) $55,8\pm 5,1 \mu\text{m} \times 34,6\pm 4,2 \mu\text{m}$; C – *Sarcocystis* sp. (1000 X) $8,7\pm 3,3 \mu\text{m}$; and D – *Caryospora* sp. (400 X) $6\pm 1 \mu\text{m}$.

Table 1. Evolutionary forms of protozoa, helminthes and anthrops detected in fecal samples of 56 captive-bred serpents of the *Bothrops jararaca*, *Bothrops jararacussu* and *Crotalus durissus* species.

Evolutionary forms	<i>Bothrops jararaca</i>	<i>Bothrops jararacussu</i>	<i>Crotalus durissus</i>	Total
	N=19	N=20	N=17	
Eggs of Ascaridae Family*	2	1	5	8 (14.3%)
<i>Kalicephalus</i> sp.*	5	6	3	14 (25%)
Rhabditoidea Superfamily*	0	3	2	5 (8.9%)
<i>Caryospora</i> sp.*	15	13	14	42 (75.0%)
<i>Sarcocystis</i> sp.*	3	1	2	6 (10.7%)
<i>Giardia</i> sp. cysts with similar morphology	2	0	0	2 (3.6%)
Amoeboid cyst	7	9	7	23 (41.1%)
Unsporulated coccidia oocysts	1	0	4	5 (8.9%)
Larvae	0	6	4	10 (17.9%)
Acarus egg	19	19	17	55 (98.2%)
<i>Aspicularis</i> sp.**	3	2	3	8 (14.3%)
<i>Syphacia</i> sp.**	8	10	8	26 (46.4%)
<i>Rodentolepis</i> sp.**	5	5	3	12 (21.4%)

*Parasites specific to serpentes; **Pseudoparasites – Parasites of other animals that are used for feeding serpents with evolutionary forms detected in feces.

with evolutionary forms of pseudoparasites of different genera. Acarid eggs were found in samples from 55/56 (98.2%) of the animals (Table 1).

All of the fecal samples from the snakes tested were negative for antigens of *Giardia* sp., using ELISA. Using the same technique, antigens of *Cryptosporidium* sp. were found in 18 specimens of *B. jararaca*, 11 *B. jararacussu* and five *C. durissus*, thus giving rise to prevalence of 60.7% (34/56) (Table 2).

Discussion

The parasite prevalence detected among the Vital Brazil Institute's captive-bred snakes was 80.3%. This result was lower than that found by Radhakrishnan et al. (2009), who observed that 22 out of 25 snakes (88%) at three different herpetariums in the state of Kerala, India, presented parasitic forms in fecal samples. In turn, Rubião (1999) found that nematodes were present in 45% of 75 fecal samples from snakes at the Vital Brazil Institute, Niterói, Rio de Janeiro. The prevalence of nematodes revealed by the present study was 41.1% (23/56), which was lower than that determined by Silva et al. (2001) among 24 rattlesnakes in São Paulo, who found that 70.8% of the samples were positive for nematodes.

Kalicephalus sp. was the most prevalent nematode, detected in 25% (14/56) of the snakes. The rate of positive findings for this helminth is consistent with the results of Grego et al. (2004), who tested 131 jararacas at the Butantan Institute of São Paulo, by means of necropsy. In contrast, Rubião (1999), who tested snakes at the Vital Brazil Institute, found that *Rhabdias* sp. nematodes predominated. The occurrences of *Kalicephalus* sp. in three different species of snakes may be explained by the poor specificity of this parasite, in view of its direct cycle (SILVA et al., 2001), which promotes its circulation in the propagation environment. Schad (1956) suggests that the snake's behavior of searching the environment with its tongue may set the stage for transmission of parasitoses.

The second most prevalent helminth was roundworms of the family Ascaridae such as *Ophidascaris* sp. or *Travassosascaris*

Table 2. Result of Enzyme immunoassay for survey of antigens of *Cryptosporidium* sp. in fecal samples of 56 serpents of *Bothrops jararaca*, *Bothrops jararacussu* and *Crotalus durissus* species.

Species	N	ELISA	
		Positive	Negative
<i>Bothrops jararaca</i>	19	18	1
<i>Bothrops jararacussu</i>	20	11	9
<i>Crotalus durissus</i>	17	5	12

araujoi. These parasites have an indirect cycle, with terrestrial invertebrates and small mammals as intermediate hosts, and transmission under conditions of captivity is rare, but cannot be ruled out (DIAS et al., 2004). Findings of these threadworms imply that these snakes arrived from their natural biome already infected, and that the initial handling at the Institute failed to eradicate this parasite.

Only a few parasite surveys on snakes based on fecal samples have detected protozoa, such as in Barbosa et al. (2006). High prevalence of protozoa was found in the present study, with predominance of the parasite *Caryospora* sp.. This had already been described for several snakes elsewhere in the world (SEVILLE et al., 2005; MODRÝ; KOUDELA, 1998) and in Brazil (LAINSON et al., 1991). In addition to *Caryospora* sp., cysts with morphology similar to *Giardia* sp., amoebae, unsporulated coccidia oocysts and sporocysts of *Sarcocystis* sp. were also found. The methodology used may have led to the lack of data about protozoa in herpetology, since most studies have used necropsies to recover parasites. Alternatively, the lack of data may have been associated with the type of laboratory technique chosen for parasitological investigations of feces, relating to the difficulty of viewing evolutionary forms of protozoa in microscopic preparations.

Two fecal samples per snake were used in the present study to improve the efficiency of parasitological diagnoses. Cartwright (1999) claimed that testing two feces samples on different days increased the sensitivity of detection of evolutionary forms of parasites to 92%. Accordingly, this author correlated parasitological

techniques based on different assumptions with the enzyme immunoassay for diagnosing *Giardia* sp. and *Cryptosporidium* sp. antigens.

Evolutionary forms of pseudoparasites were found in 64.3% of the fecal samples of the snakes studied here, and were present in the three snake species at similar prevalence rates. *Syphacia* sp. was the predominant genus, followed by *Rodentolepis* sp. The presence of these pseudoparasites was also reported by Radhakrishnan et al. (2009), and *Rodentolepis* sp. was the prevalent species. Rubião (1999) also reported pseudoparasites in his study, with predominance of *Syphacia* sp., which is consistent with the data found in the present study. Based on the detection rates for pseudoparasites in other studies (RUBIÃO, 1999; RADHAKRISHNAN et al., 2009), it is possible to conclude that the animal houses that provide animals to feed snakes kept for research purposes do not have good control over the intestinal parasites that are common among the species of rodents bred in these establishments.

Furthermore, discordance has been found between the results from microscopic and immunological concentration techniques for detecting antigens of *Cryptosporidium* sp. and *Giardia* sp. In diagnosing *Giardia* sp., cysts resembling those of this parasite were found in two jararacas through microscopy without correspondence to ELISA results. The difference between the results may have occurred due to the small quantity of evolutionary forms of the parasite and, consequently, the small quantity of antigens in the sample, on random dispersion. The absence or small quantity of antigens may have been triggered by addition of samples on different days. Thus, the aliquots used for ELISA presented absence or low quantities of antigen, i.e. below the detection capacity of the test.

Cryptosporidium sp. was detected in 34 animals (60.7%), although the ELISA kit used was only able to detect the genus, and differentiation between the pathogenic and pseudoparasitic species affecting snakes was not possible. Ruggiero et al. (2011), researching several snake species at the Butantan Institute in São Paulo, found after applying specific staining and molecular techniques that the prevalence of *Cryptosporidium* sp. was 44% (4/10), and that the highest number of positive results was among rattlesnakes (57.14%; 4/7). In the present study, *B. jararaca* was the species presenting highest prevalence of *Cryptosporidium* sp., with positive findings in 94.7% (18/19), while *C. durissus* was the least prevalent (29.4%; 5/17).

Collection of samples directly from the bottom lining of the snakes' maintenance boxes aided in finding acarid eggs in almost all of the fecal samples from these snakes. No ectoparasitism evaluation was performed. Therefore, it was not possible to ascertain if the acarid eggs were parasitic or free-living. Nonetheless, they were indicators of the sensitivity of the microscopic techniques used in the diagnostic stool analysis.

The study by Rubião (1999) and the present study were both developed at the Vital Brazil Institute, at different times. It could be seen that the same parasite species were circulating, taking into account both parasites and pseudoparasites that are specific to snakes. This leads to the assumption that the antiparasitic treatment has not been successful. This lack of successful therapy may be explained by improper therapeutic schemes, underdosage, parasite resistance or use of drugs that were not effective for certain parasites. Moreover, there is also the possibility of infection

transferred through routine handling of the snakes, thereby facilitating transmissibility of evolutionary forms of the parasites.

Conclusions

The results from this study demonstrate that parasites of snakes at the Vital Brazil Institute occur at high levels and that there is a need to assess the maintenance and management conditions of these animals. This should be extended to the entire team, as well as to the animal house that provides animals to feed the snakes.

Acknowledgments

We would like to thank the Serpentarium division of the Vital Brazil Institute for allowing this research, CNPq (Brazilian Council of Scientific and Technological Development), and the Dean's Office for Graduate, Research Studies and Innovation of Federal Fluminense University.

References

- Araújo T, Moro L, Lúcia M, Golloubeff B, Vasconcelos AC. Ocorrência de alguns endo e ectoparasitas no serpentário do UNIFENAS. *Braz J Vet Res Anim Sci* 1999; 36(1): 19-22.
- Barbosa AR, Silva H, Albuquerque HN, Ribeiro IAM. Contribuição ao estudo parasitológico de jibóias, *Boa constrictor constrictor* Linnaeus, 1758, em cativeiro. *Rev Biol Ciên Ter* 2006; 6(2): 1-19.
- Brasil. Ministério da Saúde. Secretaria de Vigilância em Saúde - SVS. *Guia de vigilância epidemiológica*. Brasília: MS; 2012. Caderno 14 [cited 2012 Mai 2]. Available from: http://portal.saude.gov.br/portal/arquivos/pdf/gve_7ed_web_atual_aap.pdf.
- Cartwright CP. Utility of multiple-stool-specimen ova and parasite examinations in a high-prevalence setting. *J Clin Microbiol* 1999; 37(8): 2408-2411. PMID:10405376 PMCid:PMC85240.
- Costa ACORC, Almeida-Santos SM, Germano VJ, Oliveira L, Scartozzoni RR, Salomão MG. Manutenção de serpentes em cativeiro no Instituto Butantan: I - A longevidade dos gêneros *Bothrops*, *Crotalus* e *Lachesis*. *Publ Avulsas Inst Pau Bras* 2005; 8-9: 63-68.
- Dias RJP, Almeida SJB, Prieto DB, Lima SS. Aspectos ecológicos dos nematóides parasitas de *Crotalus durissus terrificus* Laurenti, 1768 (Ophidia, Viperidae), em Juiz de Fora, Minas Gerais, Brasil. *Rev Bras Zool* 2004; 6(2): 219-230.
- Grego KF, Gardiner CH, Catão-Dias JL. Comparative pathology of parasitic infections in free-ranging and captive pit vipers (*Bothrops jararaca*). *Vet Rec* 2004; 154(18): 559-562. PMID:15144001. <http://dx.doi.org/10.1136/vr.154.18.559>
- Huber F, Bomfim TC, Gomes RS. Comparação da eficiência da técnica de sedimentação pelo formaldeído-éter e da técnica de centrifugo-flutuação modificada na detecção de cistos de *Giardia* sp. e oocistos de *Cryptosporidium* sp. em amostras fecais de bezerros. *Rev Bras Parasitol Vet* 2003; 12(2): 135-137.
- Instituto Butantan – IB. *Laboratório de herpetologia*. São Paulo: IB; 2011 [cited 2011 Mar 7]. Available from: http://www.butantan.gov.br/home/laboratorio_de_herpetologia.php.

- Karasawa ASM, Silva RJ, Mascarini LM, Barrella TH, Lopes CAM. Occurrence of *Cryptosporidium* (Apicomplexa, Cryptosporidiidae) in *Crotalus durissus terrificus* (Serpentes, Viperidae) in Brazil. *Mem Inst Oswaldo Cruz* 2002; 97(6): 779-781. <http://dx.doi.org/10.1590/S0074-02762002000600004>
- Lainson R, Nascimento FP, Shaw JJ. Some new species of *Caryospora* (Apicomplexa: Eimeriidae) from Brazilian snakes, and a re-description of *C. jararacae* Carini, 1939. *Mem Inst Oswaldo Cruz* 1991; 86(3): 349-364. <http://dx.doi.org/10.1590/S0074-02761991000300009>
- Martins M, Araújo MS, Sawaya RJ, Nunes R. Diversity and evolution of macrohabitat use, body size and morphology in a monophyletic group of neotropical pitvipers (*Bothrops*). *J Zool* 2001; 254(4): 529-538. <http://dx.doi.org/10.1017/S0952836901001030>
- Modrý D, Koudela B. Coccidia of genus *Caryospora* (Apicomplexa: Eimeriidae) from the long nosed vine snake, *Ahaetulla nasuta* (Serpentes: Colubridae: Boiginae) from southern India, with a description of *C. veselyi* sp. *Folia Parasitol* 1998; 45: 167-169.
- O'Donoghue PJ. *Cryptosporidium* and Cryptosporidiosis in man and animals. *Int J Parasitol* 1995; 25(2): 139-195. [http://dx.doi.org/10.1016/0020-7519\(94\)E0059-V](http://dx.doi.org/10.1016/0020-7519(94)E0059-V)
- Radhakrishnan S, Kurup SP, Banerjee PS. Endoparasitism in captive wild-caught snakes indigenous to Kerala, India. *Zoo Biol* 2009; 28(3): 253-258. PMID:19504599. <http://dx.doi.org/10.1002/zoo.20231>
- Ritchie LS. An ether sedimentation technique for routine stool examinations. *Bull U S Army Med Dep* 1948; 8(4): 326.
- Rubião ECN. *Nematóides parasitas de jararaca (Bothrops jararaca Wied, 1824) mantidas no serpentário do Instituto Vital Brazil: aspectos patológicos* [Dissertação]. Niterói: Faculdade de Medicina Veterinária da Universidade Federal Fluminense; 1999.
- Ruggiero PC, Zacariotti RL, Bondan EF, Lallo MA. Prevalência de *Cryptosporidium serpentis* em serpentes de cativeiro. *Ciênc Rural* 2011; 41(11): 1975-1978. <http://dx.doi.org/10.1590/S0103-84782011001100020>
- Seville RS, Asmundsson IM, Campbell JA. Descriptions of six new species of *Caryospora* (Apicomplexa: Eimeriidae) from Guatemalan snakes (Serpentes: Colubridae and Viperidae). *J Parasitol* 2005; 91(6): 1452-1458. PMID:16539030. <http://dx.doi.org/10.1645/GE-588R.1>
- Schad GA. Studies on the genus *Kalicephalus* (Nematoda: Diaphanocephalidae). I. On the life histories of the North American Species *K. parvus*, *K. agkistrodontis*, and *K. rectiphilus*. *Can J Zool* 1956; 34(5): 425-452. <http://dx.doi.org/10.1139/z56-047>
- Sheather AT. The detection of intestinal protozoa and monge parasites by a flotation technique. *J Comp Pathol* 1923, 36: 266-275. [http://dx.doi.org/10.1016/S0368-1742\(23\)80052-2](http://dx.doi.org/10.1016/S0368-1742(23)80052-2)
- Silva R. *As serpentes*. Jaboticabal: FUNEP; 2000. p. 46.
- Silva RJ, Barrella TH, Nogueira MF, O'Dwyer LH. Frequency of Helminths in *Crotalus durissus terrificus* (Serpentes, Viperidae) in captivity. *Rev Bras Parasitol Vet* 2001; 10(2): 91-93.
- Willis II. A simple levitation method for the detection of hookworm ova. *Med J Australia* 1921; 8: 375-376.
- Young KH, Bullock SL, Melvin DM, Spruill CL. Ethyl Acetate as a substitute for diethyl ether in the formalin-ether sedimentation technique. *J Clin Microbiol* 1979; 10(6): 852-853. PMID:574877 PMID:PMC273283.