

# Genetic variability of *Leishmania infantum* in naturally infected dogs in the state of Bahia, Brazil

Variabilidade genética de *Leishmania infantum* em cães naturalmente infectados no estado da Bahia, Brasil

Fábio Santos Carvalho<sup>1\*</sup>; George Rêgo Albuquerque<sup>1</sup>; Paulo Luiz Souza Carneiro<sup>2</sup>; Amauri Arias Wenceslau<sup>1</sup>

<sup>1</sup> Programa de Pós-graduação em Ciência Animal, Departamento de Ciências Agrárias e Ambientais, Universidade Estadual de Santa Cruz – UESC, Ilhéus, BA, Brasil

<sup>2</sup> Programa de Pós-graduação em Genética, Biodiversidade e Conservação, Departamento de Biologia, Universidade Estadual do Sudoeste da Bahia – UESB, Jequié, BA, Brasil

Received January 30, 2017

Accepted May 29, 2017

## Abstract

In Brazil, *Leishmania infantum* mainly affects humans and dogs. The state of Bahia presents many dogs that are positive for this parasite. Despite the importance of epidemiology in this region, there are still very few studies that have assessed the genetic characteristics of *L. infantum*. The aim of this study is to investigate the genetic variability of *L. infantum* isolated identified in naturally infected dogs, in order to verify occurrence of subpopulation of this parasite in the different biomes existing in the state of Bahia. Thirty-two samples of *L. infantum* were analyzed, which were obtained isolated in dogs from the Mata Atlântica (rainforest), Caatinga (semi-arid scrub forest), and Cerrado (a vast tropical savannah eco-region) Bahia municipalities' biomes. All animals presented with clinical changes suggestive of *Leishmania* spp. and they exhibited positive reactions to serological tests. kDNA analysis with RFLP markers revealed the presence of genetic variability and gene flow in subpopulations of *L. infantum*; samples from the Mata Atlântica areas were genetically more similar to those from the areas of Caatinga and they were less likely to resemble those of the Cerrado. This data may be used to investigate the dissemination of parasite in the canine population of state of Bahia.

**Keywords:** Canine Leishmaniasis, PCR-RFLP, populations, enzyme, zoonosis.

## Resumo

No Brasil a *Leishmania infantum* afeta principalmente o homem e os cães. O estado da Bahia apresenta elevado número de cães positivos por este parasito. Apesar da importância epidemiologia para a região, ainda há poucos estudos que avaliam as características genéticas de *L. infantum*. Objetivou-se com este estudo investigar a variabilidade genética de cepas de *L. infantum* identificadas em cães naturalmente infectados, a fim de verificar a ocorrência de sobpopulações do parasito nos diferentes biomas existentes no estado da Bahia. Foram analisadas 32 amostras de *L. infantum* isoladas em cães de municípios baianos distribuídos nos biomas Mata Atlântica, Caatinga e Cerrado. Todos os animais apresentavam alterações clínicas sugestivas de *Leishmania* spp. e reação positiva em exames sorológicos. A análise do kDNA com marcadores RFLP revelaram a presença de variabilidade genética e fluxo gênico nas subpopulações de *L. infantum* sendo que as amostras das áreas de Mata Atlântica foram geneticamente mais semelhantes as das áreas de Caatinga e foram mais distantes daquelas oriundas do Cerrado. Estas informações podem auxiliar em investigações de dispersão do parasito na população canino do Estado da Bahia.

**Palavras-chave:** Leishmaniose canina, PCR-RFLP, populações, enzima, zoonose.

## Introduction

In Brazil, *Leishmania infantum* is responsible for cases of visceral leishmaniasis (VL) and it affects thousands of people every year (WHO, 2015; DANTAS-TORRES & OTRANTO, 2014). The number of infected dogs is also high and can vary according

to the region studied (LEÇA et al., 2015; CARVALHO et al., 2015; OLIVEIRA et al., 2016). These infected dogs, when infected by *L. infantum*, pose numerous risks to public health (DANTAS-TORRES, 2007). However, there are few studies about the genetic profile of this parasite, and occurrence of subpopulations in the different ecosystems of states of Bahia.

The use of molecular techniques represents an alternative for the early and accurate identification of the *Leishmania* spp.

\*Corresponding author: Fábio Santos Carvalho. Hospital Veterinário, Rodovia Ilhéus-Itabuna, Km 16, s/n, Salobrinho, CEP 45662-900, Ilhéus, BA, Brasil.  
e-mail: [fabiousc@gmail.com](mailto:fabiousc@gmail.com)

present in animals, and they still facilitate studies of their genetic structure (BANETH et al., 2008; MIRÓ et al., 2008). Different regions of the genetic code of the parasite can be analyzed by using several different genetic markers. Polymerase chain reaction restriction fragment length polymorphism (PCR-RFLP) analysis techniques have allowed the identification and evaluation of the genetic structure of populations and strains of *Leishmania* spp., revealing the presence of different genotypes and polymorphisms in strains isolated in Brazil and in Europe (CORTES et al., 2006; ALONSO et al., 2010). These factors, may be attributed to known genetic events, as well as, external environmental pressures (LAINSON & SHAW, 1987).

The obtaining epidemiological information as much as genetics are essential to understanding of parasite's biology, and dynamic of disease, as well as to stimulate the realize of new studies and methodological development which allow a greater control of dissemination of parasite, in animals and humans for competent public authorities.

The aim of this study was to investigate the genetic variability of *L. infantum* isolated present in naturally infected dogs by using the PCR-RFLP technique, in order to verify occurrence of subpopulation of parasite in the different biomes existing in the state of Bahia.

## Materials and Methods

Thirty-two isolated of *L. infantum* identified in dogs in municipalities of the state of Bahia were studied and they were found to present different geo-climatic characteristics. A total of 5 mL of blood was obtained from dogs presenting with the clinical signs for *L. infantum*, and their serological reactions in enzyme-linked immunosorbent assay (ELISA) and PCR tests were positive for infection with this parasite. The genomic DNA was obtained from 500 µL of whole blood with added extraction buffer (20 mM Tris, 50 mM EDTA, 5 µg/mL of K, and sodium dodecyl sulfate [SDS] proteinase 1%), and it was kept at 60°C for 80 min. The samples were purified with phenol: chloroform: active amyl alcohol at a ratio of 25:24:1 (Invitrogen®), precipitated with 100% ethanol and 5 M ammonium acetate (SAMBROOK et al., 1989). The samples were quantified in NanoDrop2000 (Thermo Fisher Scientific, Waltham, MA, USA), standardized and amplified with 10 pmoles of specific primers MC1 5' - GTTAGCCGATGGTGGTCTTG-3' and MC2 5' - CACCCATTTTCCGATTTTG-3' (CORTES et al., 2006), 2 mM of MgCl<sub>2</sub>, 1.5 U of Taq DNA polimerase (Ivintrogen®),

2.5% of dimethyl sulfoxide (DMSO), and 100 ng of the genomic DNA in a final volume of 50 µL submitted to 35 cycles and held at a annealing temperature of 60°C. Then, the amplicons obtained were purified with a Purelink™ kit (Invitrogen®) according to the manufacturer's protocol. Subsequently, they were subjected to digestion with enzymes BgI II RsaI (AflI), DdeI, VspI (AseI), BmeI390 (BssKI), HapII, and HaeIII. For the digestion reaction buffer at 1X, 2 U of enzyme and approximately 100 ng of amplicon were used. The results were viewed in 3.5% agarose gel and stained with Syber® Safe DNA Gel Stain. The results were analyzed with the LabImage® ID program. The control samples of *L. infantum* were provided by the *Leishmania* Collection of the Instituto Oswaldo Cruz (CLIOC) and Universidade Federal de Minas Gerais (UFMG) (Table 1). The obtained restriction patterns were analyzed with the TFGA program version 1.3 (MILLER, 1997) by adopting Nei's coefficient (NEI, 1972). The Neighbor-joining method, with 10,000 bootstrap replications, was used in the cluster analysis. This study was approved by the Ethics Committee of Animal Use - CEUA/UESC under protocol number 018/12 and followed the guidelines established by the Brazilian College of Animal Experimentation (COBEA), Federal Law 11.794.

## Results and Discussion

The samples that were positive for *L. infantum* were distributed in the Mata Atlântica (28.12%), Caatinga (56.25%), and Cerrado (15.62%) biomes. The isolated were identical when examined with the BgLII, HapII, and HaeIII enzymes. However, during the analysis with the DdeI, AflI, BsspK, and AseI enzymes, different electrophoretic patterns were identified (Table 1).

The subpopulations of *L. infantum* that were studied in this investigation presented with 17 polymorphic loci in all 21 that were analyzed (Table 2). Eleven genotypic profiles were identified, the most frequent of which were classified as Brazil A (BrA = 57.57%), Brazil B (BrB = 12.12%), and Brazil C (BrC = 12.12%). Some of these genotypes profiles are present in all of the analyzed biomes, while others were exclusive to certain biomes. The Caatinga and Cerrado biomes, presented greatest genotype diversity compared to areas of Mata Atlântica. Some genotypes observed in samples of *L. infantum*, present in areas of Caatinga has already been reported in isolated parasite, studied in others regions (CORTES et al., 2006; ALVARENGA, 2007; ALONSO et al., 2010).

When analyzing the behavior of the samples of *L. infantum* in relation to the studied biomes, one notes intense gene flow

**Table 1.** References isolated of *Leishmania infantum* provided by Instituto Oswaldo Cruz and Universidade Federal de Minas Gerais.

| Code     | International code    | Country | State              | Zimodem* |
|----------|-----------------------|---------|--------------------|----------|
| 2301H CE | MHOM/BO/1997/LP-0017  | Bolívia | La Paz             | MON 1    |
| 2664C CE | MCAN/BR/2002/LVV-135  | Brasil  | Mato Grosso do Sul | MON 1    |
| 2926C MT | MCAN/BR/2006/CP-67    | Brasil  | Espírito Santo     | MON 1    |
| 3107H MT | MHOM/BR/2009/HU-UFS02 | Brasil  | Sergipe            | NI       |
| 3482C MT | MCAN/BR/2013/LPBI CÃO | Brasil  | Bahia              | NI       |
| BK6 CE   | BK6-UFGM              | Brasil  | Minas Gerais       | NI       |

\* NI - no information.

**Table 2.** Fragment patterns obtained after enzymatic digestion of amplicom (MC1/MC2) in *Leishmania infantum*. The results are expressed in cut patterns obtained for each enzyme and its respective identified loci.

| Enzymes                 | BglII | HapII | DdeI |                  |                  | RsaI (AflI) |            | Bme1390I (BssKI) |                  | VspI (AseI) |            | Hae III   |
|-------------------------|-------|-------|------|------------------|------------------|-------------|------------|------------------|------------------|-------------|------------|-----------|
|                         | I     | I     | I    | II               | III              | I           | II         | I                | II               | I           | II         | I         |
| Fragments in base pairs | 450   | 450   | 450  | 320<br>100<br>30 | 240<br>180<br>30 | 450         | 260<br>190 | 450              | 290<br>120<br>40 | 450         | 310<br>140 | 390<br>70 |

and little genetic structuring in subpopulations with a value of  $F_{ST} = 0.0122$  (Figure 1).

In Brazil *L. infantum* is commonly identified in areas of dry climate and with relief composed of valleys and mountains, although it has already been registered the presence of these parasites in large urban centers and coastal areas in the northeast (COURA-VITAL et al., 2011; DIAS et al., 2011; BRASIL, 2014). It was possible to verify the existence of a unique *L. infantum* population with genetic variability and gene flow in the *Leishmania* isolated identified in dogs of different Bahia biomes. These data differ from those found by Alonso et al. (2010), that using PCR-RFLP identified homogeneous standards and reduced genetic variability in strains of *L. infantum* obtained in Teresina, located in the Caatinga region. Factors such as carrying out transference of cultures, the scientific methodology adopted, the region where the DNA was obtained, and the genetic marker used can contribute to such divergent responses.

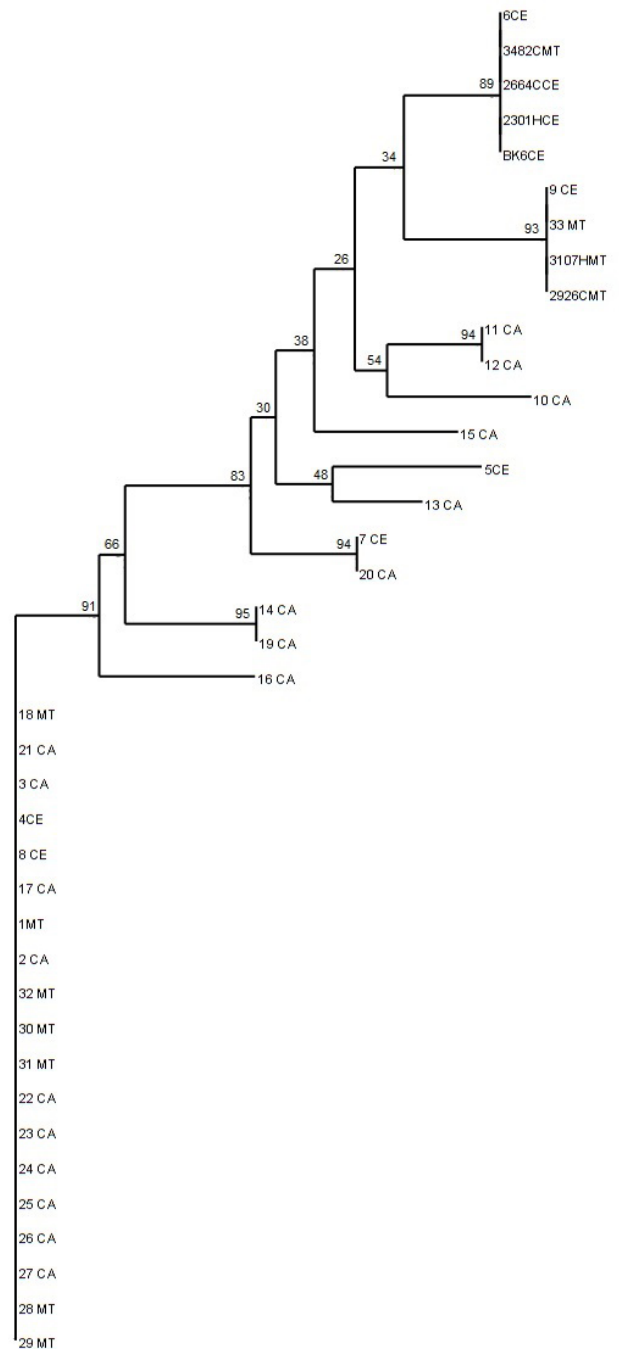
With respect to *Leishmania* spp., genetic isoenzymatic markers (multilocus enzyme electrophoresis [MLEE]) are commonly used, and although they share a co-dominant character, they feature limitations as they are influenced by intrinsic cellular processes involved in the production of enzymes and cellular proteins; thus, they may not accurately reflect the specific genetic sequence (BAÑULS et al., 1999; QUISPE TINTAYA et al., 2004).

Recently, other co-dominant markers, such as PCR-RFLP and microsatellites, have enabled the identification of genetic variability in the genome of strains of *L. infantum*, even in those strains grouped in the same zymodeme and isolated in the same region (BAÑULS et al., 1999; CORTES et al., 2006; KUHLS et al., 2008; ALVARENGA et al., 2012).

The cluster analysis performed here revealed a group that tested positive for genetically similar strains of *L. infantum*, while in others strains the occurrence of genetic variability is observed. Samples obtained from the Mata Atlântica regions grouped with greater affinity than those obtained in the Caatinga biome. This may reflect the closeness between these biomes and the fact that these transition areas interact, which can contribute to the circulation of vectors and parasites, while maintaining the genetic flow among the strains of *L. infantum*.

In other groupings, there is the approximation of strains of *L. infantum* that were derived from the Caatinga and Cerrado regions. These biomes also share common areas and characteristics (such as temperature and similar rainfalls), which may favor the presence of the parasites and their vectors.

The presence of the Caatinga biome in the northeastern region of Brazil promotes greater geographic distance between strains that are present in coastal areas with those in the Cerrado regions.



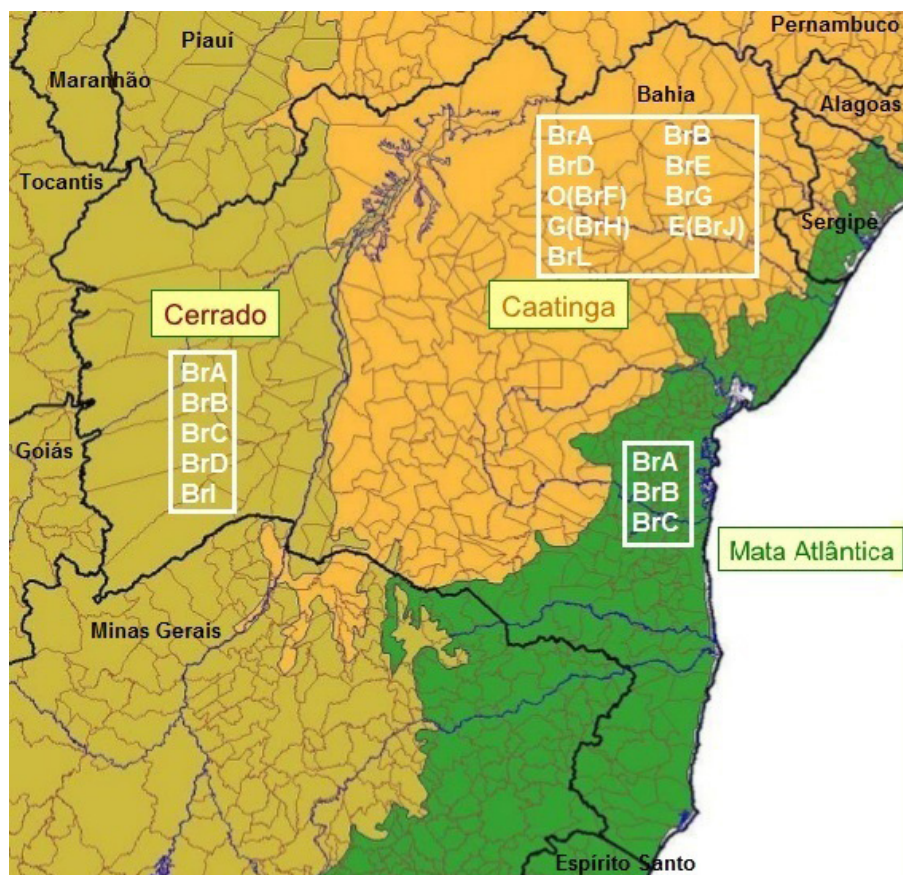
**Figure 1.** Dendrogram generated from the genotypes identified in the Bahia biomes presenting two main groups and intense correlation of isolated *Leishmania infantum* and studied biomes. MT – Mata Atlântica; CA – Caatinga; EC – Cerrado in the state of Bahia.

Geophysical factors, such as the presence of the São Francisco River and high-altitude areas (such as Chapada Diamantina, which are mainly comprised of the Serra do Sinacorá, Barbado, Mangabeira, and Espinhaço), which are present in the Caatinga biome, can act as limiting factors in the dissemination of vectors and strains of *L. infantum*, consequently resulting in greater species distinction and isolation. These factors may be contributing to greater genetic variability, as well as to the increasing number of genotypes identified (Figure 2).

When analyzing the grouping of reference strains, the formation of a homogenous block including samples from the states of Bahia, Sergipe, and Espírito Santo was found. In another group, this finding was evident in samples from Bahia, Minas Gerais, Mato Grosso do Sul, and Bolivia. The genotypic proximity of isolated strains in Brazil and those of Bolivia corroborate the findings of studies that have shown the dissemination of strains of *L. infantum* following construction of the Northwest Railway, the Vitória-Corumbá highway, and the Bolivia Brazil gas pipeline in the 1990s (CARDIM et al., 2013). Spatial and temporal analyses carried out by Antonialli et al. (2007) demonstrate the dissemination of and increases in cases of VL toward the west and east, primarily involving the states of Mato Grosso do Sul and São Paulo. In the regions of Rio de Janeiro and Minas Gerais there is no Caatinga biome and the relationship between the coastline and the areas of Cerrado becomes narrow, which can justify the proximity between some strains isolated in these environments.

Although we didactically suggest the presence of three subpopulations, the value of  $F_{st}$  near to zero shows intense genetic flow among the analyzed samples. This likely occurred due to the clonal profile of strains of *L. infantum*, as well as to the intense traffic of people and dogs, which are possibly infected, between the municipalities of the studied areas. The largest number of genotypes identified in the Caatinga biome (Figure 2) can indicate the center of origin of *L. infantum*, which then disseminated to other areas of Bahia, although the colonization process (which took place more than 500 years ago) began in the Bahia foreshore and in other areas of Brazil's northeast. A bottleneck effect, rare mechanisms of exchange of genetic material, small mutations (TIBAYRENC & AYALA, 1999; LYTHGOE, 2000; VICTOIR & DUJARDIN, 2002), and evidence of sexual reproduction (KREUTZER et al., 1994; AKOPYANTS et al., 2009) can also justify the value of  $F_{st}$  and the variability found in the studied strains.

Some restriction patterns obtained in this research were identical to the ones found in other studies conducted on *L. infantum* that were already carried out in Brazil and Portugal (CORTES et al., 2006; ALVARENGA, 2007; ALONSO et al., 2010). Three genotypes obtained in the Bahia samples were identical to the ones found in samples of *L. infantum* isolated from dogs in Portugal and in other countries (CORTES et al., 2006). The genotypical profile E (BrJ) shares similarities to the samples from Brazil and Portugal; while G (BrI) was identified in samples of Portugal, Sudan, and Ethiopia; and O (BrF) was found in isolated samples from Malta



**Figure 2.** Map of the state of Bahia with their respective biomes and genotypes of *Leishmania infantum* identified.

(CORTES et al., 2006). These data corroborate the previously available data on the dissemination of the parasite among continents (WHO, 2015), and they provide further support for the type of asexual reproduction used by the parasite (TIBAYRENC et al., 1993; TIBAYRENC & AYALA, 1999)

However, the genotypes generated by BssKI, RsaI, and AseI presented with atypical patterns to those found in Portugal and Minas Gerais, Brazil (CORTES et al., 2006; ALVARENGA, 2007). In this study, the HaeIII enzyme was employed for the first time, although it cleaved the DNA sequence of *L. infantum* into two fragments; this revealed a homogeneous pattern between the samples and the controls analyzed. Atypical genotypes may represent important changes in the kDNA molecule of *Leishmania* due to the genetic and population processes already mentioned above. Such changes can promote adaptive advantages to certain individuals or subpopulations of parasites in different biomes.

## Conclusion

The *Leishmania infantum* strains that were naturally isolated in dogs showed intense genetic variability and gene flow among the strains, revealing the presence of a single population of parasites, although variations occurred in the kDNA regions studied. It was not possible to determine specific patterns in the strains of *L. infantum* studied herein, which would have enabled correlations to be made with the biomes studied.

## Acknowledgements

The *Leishmania* Collection of the Instituto Oswaldo Cruz (Dra. Elisa Cupolillo), providing the positive controls for the species of *Leishmania* spp.

Animal owners and coordinators of CCZ's and NGO's contributing to this study.

Universidade Estadual de Santa Cruz (UESC), granting the physical space, laboratory and equipment.

## References

- Akopyants NS, Kimblin N, Secundino N, Patrick R, Peters N, Lawyer P, et al. Demonstration of genetic exchange during cyclical development of *Leishmania* in the sand fly vector. *Science* 2009; 324(5924): 265-268. PMID:19359589. <http://dx.doi.org/10.1126/science.1169464>.
- Alonso DP, Costa DL, Mendonça IL, Costa CHN, Ribolla PEM. Heterogeneity of *Leishmania infantum chagasi* Kinetoplast DNA in Teresina (Brazil). *Am J Trop Med Hyg* 2010; 82(5): 819-821. PMID:20439961. <http://dx.doi.org/10.4269/ajtmh.2010.09-0600>.
- Alvarenga JSC. *Estudo da variabilidade genética inter e intra-específica de Leishmania (Leishmania) chagasi (Cunha & Chagas, 1937) e Leishmania (Leishmania) infantum (Nicolle, 1908)* [Tese]. Belo Horizonte: Universidade Federal de Minas Gerais; 2007.
- Alvarenga JSC, Ligeiro CM, Gontijo CME, Cortes S, Campino L, Vago AR, et al. kDNA Genetic signatures obtained by LSSP-PCR analysis of *Leishmania (Leishmania) infantum* isolated from the new and the old world. *PLoS One* 2012; 7(8): e43363. PMID:22912862. <http://dx.doi.org/10.1371/journal.pone.0043363>.
- Antoniali SAC, Torres TG, Paranhos AC Fo, Tolezano JE. Spatial analysis of American Visceral Leishmaniasis in Mato Grosso do Sul State, Central Brazil. *J Infect* 2007; 54(5): 509-514. PMID:16979241. <http://dx.doi.org/10.1016/j.jinf.2006.08.004>.
- Baneth G, Koutinas AF, Solano-Gallego L, Bourdeau P, Ferrer L. Canine Leishmaniasis-new concepts and insights on an expanding zoonosis: part one. *Trends Parasitol* 2008; 24(7): 324-330. PMID:18514028. <http://dx.doi.org/10.1016/j.pt.2008.04.001>.
- Bañals AL, Jonquieres R, Guerrini F, Le-Pont F, Barrera C, Espinel I, et al. Genetic analysis of *Leishmania* parasites in Ecuador: are *Leishmania (Viannia) panamensis* and *Leishmania (V.) guyanensis* distinct taxa? *Am J Trop Med Hyg* 1999; 61(5): 838-845. PMID:10586922. <http://dx.doi.org/10.4269/ajtmh.1999.61.838>.
- Brasil. Ministério da Saúde. *Manual de vigilância e controle da Leishmaniose Visceral*. Brasília: MS; 2014.
- Cardim MFM, Rodas LA, Dibo MR, Guirado MM, Oliveira AM, Chiaravalloti-Neto F. Introdução e expansão da Leishmaniose visceral americana em humanos no estado de São Paulo, 1999-2011. *Rev Saude Publica* 2013; 47(4): 691-700. PMID:24346660. <http://dx.doi.org/10.1590/S0034-8910.2013047004454>.
- Carvalho FS, Wenceslau AA, Albuquerque GR, Munhoz AD, Gross E, Carneiro HC, et al. *Leishmania (Viannia) braziliensis* in dogs in Brazil: epidemiology, co-infection, and clinical aspects. *Genet Mol Res* 2015; 14(4): 12062-12073. PMID:26505353. <http://dx.doi.org/10.4238/2015.October.5.19>.
- Cortes S, Maurício I, Almeida A, Cristóvão JM, Pralong F, Dedet JP, et al. Application of kDNA as a molecular marker to analyse *Leishmania infantum* diversity in Portugal. *Parasitol Int* 2006; 55(4): 277-283. PMID:16959531. <http://dx.doi.org/10.1016/j.parint.2006.07.003>.
- Coura-Vital W, Marques MJ, Veloso VM, Roatt BM, Aguiar-Soares RDO, Reis LES, et al. Prevalence and factors associated with *Leishmania infantum* infection of dogs from an urban area of Brazil as identified by molecular methods. *PLoS Negl Trop Dis* 2011; 5(8): e1291. PMID:21858243. <http://dx.doi.org/10.1371/journal.pntd.0001291>.
- Dantas-Torres F. The role of dogs as reservoirs of *Leishmania* parasites, with emphasis on *Leishmania (Leishmania) infantum* and *Leishmania (Viannia) braziliensis*. *Vet Parasitol* 2007; 149(3-4): 139-146. PMID:17703890. <http://dx.doi.org/10.1016/j.vetpar.2007.07.007>.
- Dantas-Torres F, Otranto D. Dogs, cats, parasites, and humans in Brazil: opening the black box. *Parasit Vectors* 2014; 7(1): 22. PMID:24423244. <http://dx.doi.org/10.1186/1756-3305-7-22>.
- Dias ES, Regina-Silva S, França-Silva JC, Paz GF, Michalsky EM, Araújo SC, et al. Eco-epidemiology of visceral leishmaniasis in the urban area of Paracatu, state of Minas Gerais, Brazil. *Vet Parasitol* 2011; 176(2-3): 101-111. <http://dx.doi.org/10.1016/j.vetpar.2010.11.014>.
- Kreutzer RD, Yemma JJ, Grogl M, Tesh RB, Martin TI. Evidence of sexual reproduction in the protozoan parasite *Leishmania* (Kinetoplastida: Trypanosomatidae). *Am J Trop Med Hyg* 1994; 51(3): 301-307. PMID:7943548. <http://dx.doi.org/10.4269/ajtmh.1994.51.301>.
- Kuhls K, Chicharro C, Cañavate C, Cortes S, Campino L, Haralambous C, et al. Differentiation and Gene Flow among European Populations

- of *Leishmania infantum* MON-1. *PLoS Negl Trop Dis* 2008; 2(7): e261. PMID:18612461. <http://dx.doi.org/10.1371/journal.pntd.0000261>.
- Lainson R, Shaw JJ. Evolution, classification and geographical distribution. In: Peters W, Killick-Kendrick R, editors. *The Leishmaniasis in Biology and Medicine*. New York: Academic Press; 1987. p. 1-120.
- Leça NF Jr, Guedes PEB, Santana LN, Almeida VA, Carvalho FS, Albuquerque GR, et al. Epidemiology of canine leishmaniasis in southern Bahia, Brazil. *Acta Trop* 2015; 148: 115-119. PMID:25917715. <http://dx.doi.org/10.1016/j.actatropica.2015.04.008>.
- Lythgoe KA. The coevolution of parasites with host-acquired immunity and the evolution of sex. *Evolution* 2000; 54(4): 1142-1156. PMID:11005284. <http://dx.doi.org/10.1111/j.0014-3820.2000.tb00550.x>.
- Miller MP. *Tools for Population Genetic Analysis (TFPGA), 1.3: a Windows program for the analysis of allozyme and molecular population genetic data*. Distributed by the author; 1997.
- Miró G, Cardoso L, Pennisi MG, Oliva G, Baneth G. Canine leishmaniasis: new concepts and insights on an expanding zoonosis: part two. *Trends Parasitol* 2008; 24(8): 371-377. PMID:18603476. <http://dx.doi.org/10.1016/j.pt.2008.05.003>.
- Nei M. Genetic distance between populations. *Am Nat* 1972; 106(949): 283-292. <http://dx.doi.org/10.1086/282771>.
- Oliveira TNA, Guedes PEB, Souza GB, Carvalho FS, Alberto Carlos RS, Albuquerque GR, et al. Diagnosis and epidemiology of canine leishmaniasis in southeastern Bahia, Brazil. *Genet Mol Res* 2016; 15(3): 210. PMID:27706707. <http://dx.doi.org/10.4238/gmr.15038684>.
- Quispe Tintaya KW, Ying X, Dedet JP, Rijal S, De Bolle X, Dujardin JC. Antigen genes for molecular epidemiology of leishmaniasis: polymorphism of cysteine proteinase B and surface metalloprotease glycoprotein 63 in the *Leishmania donovani* complex. *J Infect Dis* 2004; 189(6): 1035-1043. PMID:14999607. <http://dx.doi.org/10.1086/382049>.
- Sambrook J, Fritsch EF, Maniatis T. *Molecular cloning: a laboratory manual*. 2nd ed. New York: Cold Spring Harbor; 1989.
- Tibayrenc M, Ayala FJ. Evolutionary genetics of *Trypanosoma* and *Leishmania*. *Microbes Infect* 1999; 1(6): 465-472. PMID:10602679. [http://dx.doi.org/10.1016/S1286-4579\(99\)80050-1](http://dx.doi.org/10.1016/S1286-4579(99)80050-1).
- Tibayrenc M, Neubauer K, Barnabé C, Guerrini F, Skarecky D, Ayala F. Genetic characterization of six parasitic protozoa: Parity between random-primer DNA typing and multilocus enzyme electrophoresis. *Proc Natl Acad Sci USA* 1993; 90(4): 1335-1339. PMID:8433991. <http://dx.doi.org/10.1073/pnas.90.4.1335>.
- Victoir K, Dujardin JC. How to succeed in parasitic life without sex? Asking *Leishmania*. *Trends Parasitol* 2002; 18(2): 81-85. PMID:11832299. [http://dx.doi.org/10.1016/S1471-4922\(01\)02199-7](http://dx.doi.org/10.1016/S1471-4922(01)02199-7).
- World Health Organization – WHO. *Leishmaniasis* [online]. 2015 [cited 2015 Dec 1]. Available from: [http://apps.who.int/neglected\\_diseases/ntddata/leishmaniasis/leishmaniasis.html](http://apps.who.int/neglected_diseases/ntddata/leishmaniasis/leishmaniasis.html).