

<https://doi.org/10.1590/2318-0331.252020180171>

Verification of the stationarity of flow series in the Iguaçú River basin

Verificação da estacionariedade de séries hidrológicas de vazões na bacia do Rio Iguaçú

Bruna Kiechaloski Miró Tozzi¹  & Heinz Dieter Oskar August Fill¹

¹Universidade Federal do Paraná, Curitiba, PR, Brasil

E-mails: brumiro@gmail.com (BKMT), heinzfill@yahoo.com.br (HDOAF)

Received: October 25, 2018 - Revised: September 23, 2019 - Accepted: November 12, 2019

ABSTRACT

The purpose of this technical note is to verify the stationarity of flows in the Iguaçú River Basin, considering 14 fluviometric stations. For this purpose, three sets of annual flow series were studied: mean flows, maximum flows and minimum flows of 7 days. Initially, the exploratory analysis of the data was performed, based on the establishment of two points of change of the characteristics of the flows and the accomplishment of statistical tests of equality of mean and variance, parametric and nonparametric. Finally, composite tests were used considering the basin divided into Upper and Lower Iguaçú. In the exploratory analysis of the data, it was concluded that there was apparently a change in the trend of flow rates, part in the 1970s, part in the 1980s. Therefore, the series were divided in two different ways, at the half and at the point suggested in the exploratory analysis. Regarding the statistical tests, the Mann-Whitney test was chosen because it did not depend on the underlying distribution of the flow series, and because the test was highly recommended by other authors. It was concluded that the flow change occurred in a relatively short interval of time, and could be treated as a non-stationarity per hop. In general, the most recent change was downstream of the União da Vitória fluviometric station. A change in the behavior of the mean and maximum flows was evident, however, such phenomenon was not observed in the evaluation of the minimum flows.

Keywords: Parametric; Statistic; Tests.

RESUMO

O objetivo desta nota técnica é verificar a estacionariedade de vazões na Bacia do rio Iguaçú, considerando 14 estações fluviométricas. Foram estudados três conjuntos de séries de vazões anuais: vazões médias, vazões máximas e vazões mínimas de 7 dias de duração. Inicialmente, foi feita uma análise exploratória dos dados, onde fixou-se dois pontos de mudança das características das vazões, em seguida foram aplicados testes estatísticos de igualdade de média e variância, tanto paramétricos, como não paramétricos. Por fim, foram utilizados testes compostos considerando a bacia dividida em Alto e Baixo Iguaçú. Na análise exploratória dos dados, concluiu-se que aparentemente houve uma alteração na tendência das vazões, ora na década de 1970, ora na década de 1980. Assim, as séries foram divididas tanto na metade, como no ponto sugerido na análise exploratória. Em relação aos testes estatísticos, adotou-se como mais representativo o teste de Mann-Whitney, pelo mesmo não depender da distribuição subjacente das séries de vazões e pelas recomendações da literatura. Concluiu-se que a alteração das vazões ocorreu em um intervalo relativamente curto de tempo, podendo ser tratada como uma não estacionariedade por salto. Observa-se que de forma geral, a alteração mais recente foi à jusante da estação fluviométrica de União da Vitória. Uma alteração no comportamento das vazões médias e máximas ficou evidente, no entanto, tal fenômeno não foi observado na avaliação das vazões mínimas.

Palavras-chave: Estatística; Paramétricos; Testes.

INTRODUCTION

The studies related to the water resource management and the projects for its utilization are, in general, based on estimates of surface water availability. These estimates are obtained, preferably, from observed flows series. In case of a lack of flow series, it may also be gathered through a statistical analysis of precipitation data.

Since the hydrological studies are considered as a relevant tool for the decision-making of the management agencies, it is important that the estimated water availability presents the current and, most importantly, the future reality of the flow.

In this scenario, the importance of identifying the stationarity of rain and flow series becomes evident, in order to plan and guarantee the future availability of water resources, in quality and quantity. For an accurate availability estimation, it is necessary to sustain a flow series that covers extensive periods of time, in order to minimize a correlation sampling error. At the same time, lengthy records enable the hypothesis that the statistical properties of the variables of interest may vary over time, either because of natural or anthropic climate effects, or because of soil usage.

According to Tozzi (2014), the water resource planning, when taking into consideration the stochastic nature of hydrological variables, was notably developed in the 20th century with the use of sophisticated statistical techniques. The essential principles presumed in these techniques are: (i) the statistical characteristics of the historical series will be reproduced in the future, considering in this case, that there are stationary series; and, (ii) the samples used in the studies are statistically representative.

However, extensive series of up until 100 years of observation, have often been shown to be non-stationary, due to climate condition variability, soil use alteration, or even hydraulic construction implementation. Therefore, the identification and subsequently, the adjustment of the stationarity of temporal flow series or precipitations, is utterly important, as it ensures that studies, projects and actions related to water resources work with more a representative data and aligned with the region's future of hydrological reality.

In the State of Paraná, the Iguaçu River basin is the largest in area and, due to its importance, a substantial number of studies were performed about the subject. This basin stands out for its great hydroelectric potential, reason why it has been the subject of most of these studies since the 1950s. At that time, an implementation of Negro River transposition (Iguaçu River affluent) was considered for Serra do Mar (mountain range by the sea). In the 1970s, a detailed study discarded this transposition and proposed a sequence of hydroelectric power plants along the Iguaçu River which, after some modifications, were implemented in the 20th century (Canambra Engineering Consultants Limited, 1969; Companhia Paranaense de Energia, 1974, 1978). Recently, studies have been performed in order to analyze the stationarity of the flow at Iguaçu River, with the intention of verifying any changes in its behavior and, consequently, in the firm energy at the hydroelectric plants of the Iguaçu River (Pedrozo & Fill, 2017; Fill, 2017).

With this scenario in mind, the main purpose of this technical note is to demonstrate the results of the study implemented by Tozzi (2014) regarding the stationarity flow in the Iguaçu River Basin, reviewing methods to locate the non-stationarity hydrologic

flow series, in order to contribute to the continuity of the discussion about the topic.

Based on the objective, the following measures were executed: (i) Exploratory Data Analysis; and, (ii) Hypothesis Tests.

According to Kundzewicz & Robson (2000), the visual examination of the data is part of a group of techniques called Exploratory Data Analysis (EDA), which involves the use of charts and other methods such as heuristic enquiry, to explore and understand series over time, being an essential component to begin analyzing the stationarity phenomenon.

The hypothesis tests are formal procedures in statistical inference used to analyze the characteristics of a population from a sample of observation (Spanos, 1980; Devore, 2012).

MATERIALS AND METHODS

Used data

The hydrographic basin of Iguaçu River is located in the South of Brazil between latitudes 25° 05 'S and 26° 45 'S and longitudes 48° 57 'W and 54° 50 'W and has a drainage area of 65,558 square kilometers (Paraná, 2007). It is a sub-basin of Paraná River hydrographic basin, shown in Figure 1. The source of Iguaçu River is in the western portion of *Serra do Mar* (mountain range by the sea), at an altitude of around 1,200 m, passing through the Curitiba Plateau, and then crossing the Ponta Grossa Plateau. From Porto Vitória it passes by the Guarapuava Plateau to the Paraná River mouth.

For the case study, fourteen fluvimetric stations in the Iguaçu River basin were selected, as listed in Table 1. These stations were selected mainly for their extensive periods of observation, location, data quality and constancy of their records. Besides, they have been the subject of many hydrological studies, most of which have focused on the design of hydroelectric plants, in which their records have been carefully analyzed and, eventually, corrected. Thus, the records consisting these series of flows were accepted as correct.

Observed flows were used since there are no regularization stream gage reservoirs for the fluvimetric stations, except at Cataratas Falls. The series of average, maximum and minimum flows were produced based on the data available on Hidroweb website from the Agência Nacional de Águas (2013) on the internet.

The stations shown in Table 1 - except Porto Amazonas, União da Vitória and Santa Clara stations - have observation flaws, these were filled, when possible, using hydrological regionalization techniques. In cases where there was an impossibility to fill in the gaps, the periods of the respective series were redefined, removing from the analysis, the years with gaps in excess.

Exploratory analysis and regression tests

At the beginning, graphs were prepared with hydrographs and the flow rates accumulated over time. This method, and particularly the accumulated flow approach, was used by Fill (2011) to detect the probable change time in the characteristics of the series. A graph showing the deviations of average annual flows

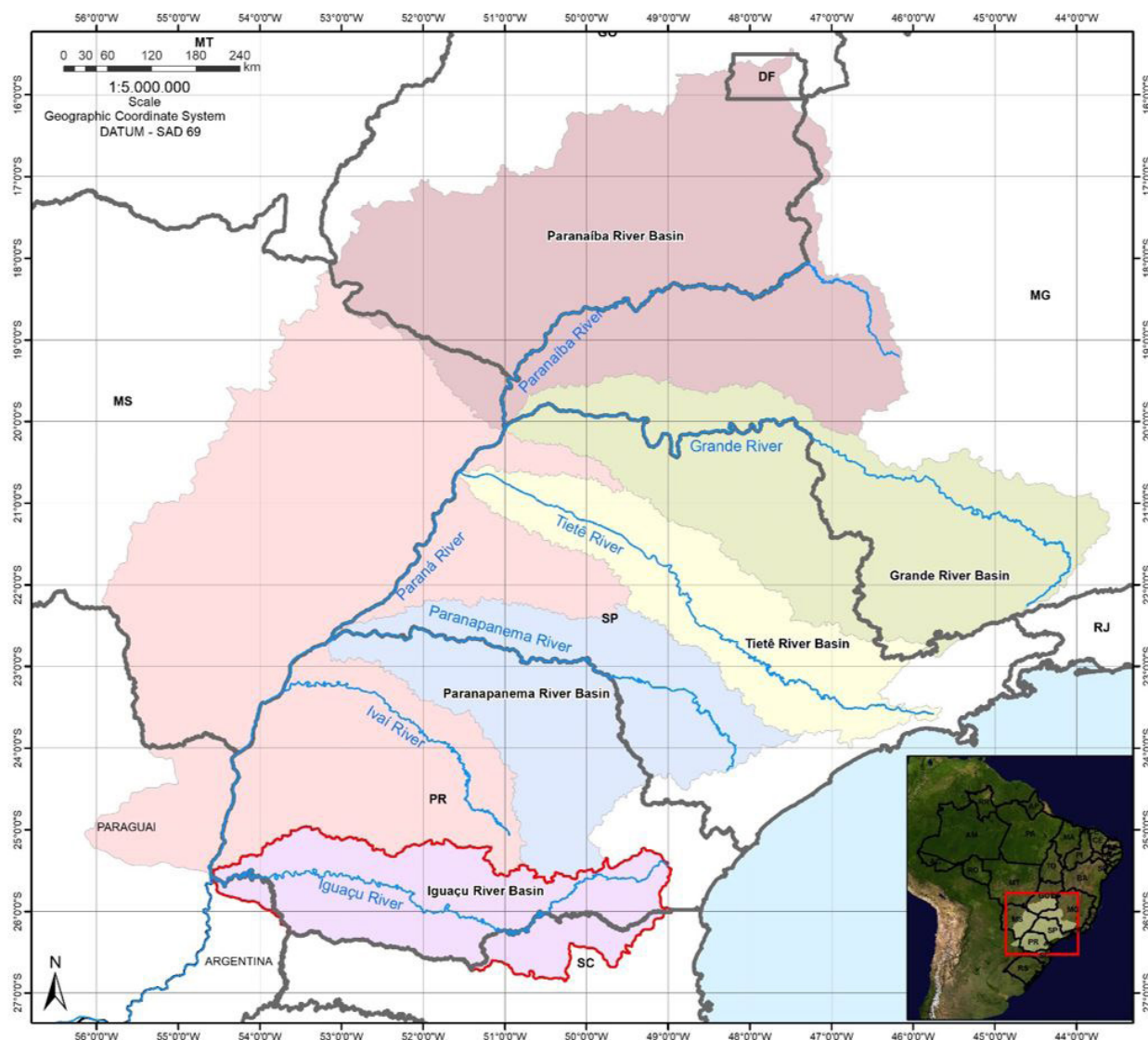


Figure 1. Parana Hydrographic Region, with emphasis on the Iguaçu River basin.

Table 1. Fluviometric stations.

Code	Name	River	Latitude (°)	Longitude (°)	Drainage Area (km ²)	Long Term Average Flow (m ³ /s)	Period
65010000	FAZENDINHA	Pequeno River	-25.52	-49.15	117	3.03	jan/55 to jun/05
65035000	PORTO AMAZONAS	Iguaçu River	-25.55	-49.89	3,662	67.90	ago/35 to dez/05
65060000	SÃO MATEUS DO SUL	Iguaçu River	-25.88	-50.39	6,065	105.00	mai/30 to jun/05
65100000	RIO NEGRO	Negro River	-26.11	-49.80	3,379	67.10	mai/30 to jul/05
65135000	RIO DA VARZEA DOS LIMA	Varzea River	-25.93	-49.39	605	11.50	ago/39 to mai/05
65155000	SÃO BENTO	Varzea River	-25.95	-49.79	2,012	34.90	mai/30 to jun/05
65310000	UNIÃO DA VITÓRIA	Iguaçu River	-26.23	-51.08	24,211	471.00	mai/30 to dez/05
65365000	PORTO VITORIA	Espingarda River	-26.18	-51.52	65	4.69	nov/45 to jun/05
65370000	JANGADA DO SUL	Jangada River	-26.39	-51.27	1,055	25.90	nov/45 to jul/05
65415000	FAZENDA MARACANÃ	Palmital River	-26.03	-51.14	323	8.79	nov/45 to mai/05
65825000	SANTA CLARA	Jordão River	-25.64	-51.97	3,930	113.00	ago/49 to dez/05
65945000	PONTE DO VITORINO	Vitorino River	-26.05	-52.80	554	15.30	jul/56 to dez/05
65960000	ÁGUAS DO VERÊ	Chopim River	-25.77	-52.93	6,696	199.00	jul/56 to dez/05
65993000	SALTO CATARATAS ¹	Iguaçu River	-25.68	-54.43	67,317	1.642.00	jan/26 to jul/05

Source: Agência Nacional de Águas (2013). ¹ Station where the data was complemented with the "Profile Type P" fluviometric station located in Argentina.

in comparison with the long-term average, was also elaborated. The flow regression line was also aligned with the year of occurrence. This graph allows to observe (or not) a possible linear trend of the flow with time. Also, a graph was prepared with the moving averages of the flows.

To verify if the trend visually presented by the flow charts is significant, the Student's t-test was applied over the angular coefficient β of the flow regression (Johnston, 1984), in order to verify the null hypothesis $H_0: \beta = 0$.

Besides the graphs, a technique called Rescaled Adjusted Partial Sums (RAPS) was also applied, proposed by Buishand (1984) and suggested by Alemaw & Chaoka (2002), as an important preliminary technique for visual inspection of hydrological series.

According to Buishand (1984), the sum RAPS of a function $Y(t)$ is defined as:

$$X_k = \sum_{t=1}^k \frac{Y_t - \bar{Y}}{S_Y}; k = 1, \dots, n \quad (1)$$

where: X_k = RAPS at the k limit; Y_t = value of the variable at time t ; \bar{Y} = sample mean; S_Y = standard deviation of the sample; n = sample size; k = limit counter of the current sum.

According to Alexandre (2009), in case of this technique, a pronounced "peak" or "depression" may indicate a trend in the series data, with the positive slope indicating periods when the average is greater than the average after the change, while the negative slope indicates periods when the average is below the average of the period prior to the changing point. The choice, at first, for these points of change in the RAPS graph must be performed by analyzing the period of greatest amplitude between a "peak" and a "depression", or the other way around.

For each division identified by the RAPS method, the linear regression for the average sum, maximum and minimum flows was performed anew, testing the null hypothesis that the β coefficients are equal to one another ($\beta_1 = \beta_2$).

The exploratory data analysis was performed for all variables analyzed, which are: (i) average annual flow, (ii) maximum annual flow, (iii) minimum flow of 7 days. It is worth mentioning that the visual analysis of the charts only allows the identification of trends in the series and points where non-stationarities are entirely evident.

Statistical tests

The application of statistical tests takes place in three stages. Firstly, the hypothesis of the data normality is performed for the application of parametric tests, where the serial autocorrelation should guide the decision whether the tests are applied directly to the flow rates (or their logarithms), or on the residues of the autoregressive model. Afterwards, parametric tests of subsamples homogeneity, or the significance of the regression slope between the flow and the year of occurrence are applied. At the end, non-parametric tests are applied.

To analyze the normality of the series, in addition to the asymmetry coefficient and Chi-square tests, Tröger et al. (2004) also mentioned the Filliben and Kolmogorov-Smirnov tests, as more powerful. That way, the Kolmogorov-Smirnov test was chosen, as recommended by Loucks & van Beek (2005).

To verify the degree of dependence between successive data in a series, the sample Autocorrelation Coefficient (ρ) was calculated, considering a Markovian temporal dependency model in the flow logarithms and following the method proposed by Loucks & van Beek (2005) to test the hypothesis: $H_0: \rho = 0$.

Subsequently, homogeneity hypothesis tests were applied to assess the stationarity of the series.

For the research, two parametric tests were selected: the Student t test and the Snedecor F test. The classic Student t-test evaluates the equality of the population of each subseries; and the Snedecor F test evaluates the equality of population variances. Both consider that the samples are taken from normal populations. The basic formulation of these tests can be found in Devore (2012).

The non-parametric tests used in this research in order to check stationarity are: Spearman's coefficient, Mann-Whitney, Wald-Wolfowitz and Smirnov.

Very often, when studying changes in hydrological series, data from several measurement stations in a region are used, presuming a similarity between them. In this case, it is suggested to apply compound tests to each result, because there is a probability α of erroneously rejecting the null hypothesis (type I error) for each specific location. In Fill (1994) it is shown in detail how to apply a compound test.

The application of a statistical test with α probability of type I error, to a single location, is equivalent to establishing a confidence interval T_i, T_s for the T test statistic, so that there is a $1 - \alpha$ probability of this statistic being contained in T_i, T_s . So, for a single location under the null hypothesis, $P_r [T \notin [T_i, T_s] | H_0] = \alpha$

However, it is possible to extend a statistical test to a set of m locations, all supposedly subject to the same null hypothesis. This type of test is called a compound test (Fill, 1994).

When considering $m > 1$ sites with H_0 valid for all and the test statistic $K \leq m$ defined as the number of sites with $T \notin [T_i, T_s]$. Regarding the application of the original test to each location as a Bernoulli experiment, K is a binomial random variable with $p = \alpha$ and $N = m$. In this case, a critical value k_{crit} for K can be determined, supposing the null hypothesis is true:

$$P_r [K \geq k_{crit} | H_0] = \sum_{j=k_{crit}}^m \binom{m}{j} p^j (1-p)^{m-j} = 1 - \sum_{j=0}^{k_{crit}-1} \binom{m}{j} p^j (1-p)^{m-j} \quad (2)$$

where: P_r = probability of type I error for the compound test; m = number of locations; p = probability of type I error; H_0 = null hypothesis.

RESULTS AND DISCUSSION

Exploratory data analysis

In the data exploratory analysis, the descriptive statistics for the samples were first calculated, which, according to Naghettini & Pinto (2007), summarize in a simple way the pattern of distribution for variables in question.

Subsequently, exploratory analysis graphs were created in order to visually identify possible trends or changes in the series. Simple and accumulated time plots, 10 year moving average and median, and linear regressions were prepared, as shown in Figure 2.

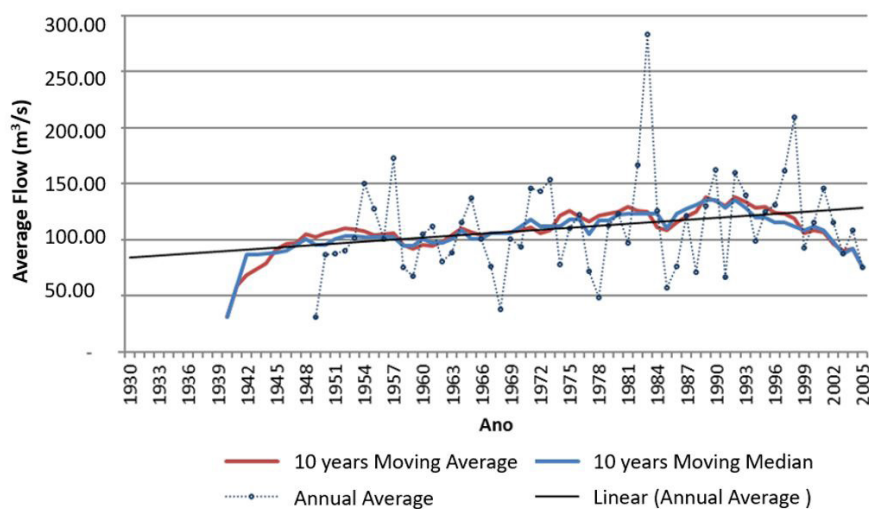


Figure 2. Time graphs - Santa Clara (65825000).

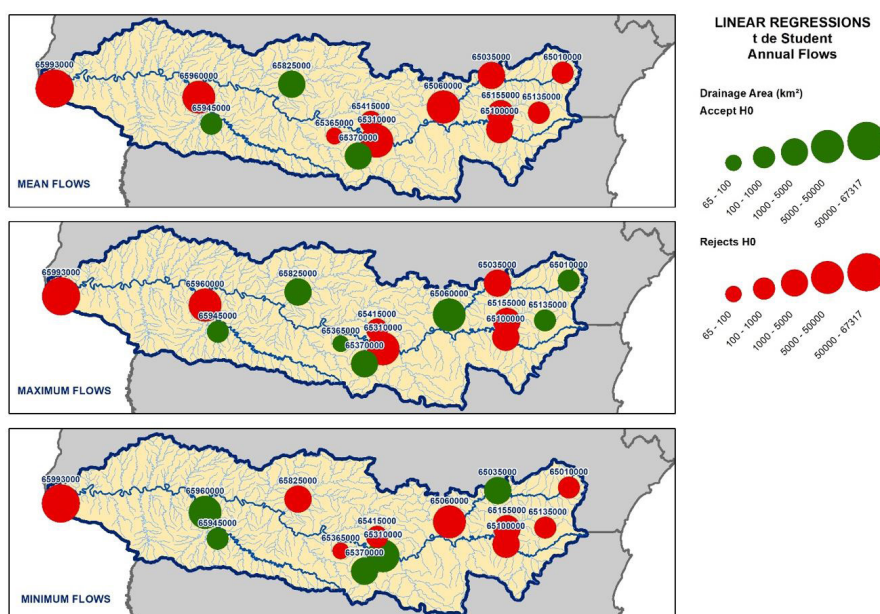


Figure 3. Linear Regressions ($\alpha=0.05$).

From the visual analysis for the group of the charts for the fourteen fluviometric stations, it is possible to observe that most of them have a slight positive trend in the averages and maximums. In the 7 days minimum this trend is visible only in some stations. In particular, the average flow rates is more prominent, which in general present a more accentuated slope.

The results of the linear regression confirmed the visual analysis, with a significant positive trend being observed in the average annual flows in most stations (occurring in eleven stations of the fourteen studied); in the highs and lows, the positive trend occurs in approximately half of the stations. Figure 3 shows the dimensional of the Student's t-test result, with the posts presented by proportional circles to their area.

Therefore, to visually identify the possible date of change in the positive trend confirmed by linear regression, the RAPS method was applied. Figure 4 shows the RAPS chart for the Santa Clara river station (65825000).

Figure 4 shows a more pronounced “peak” in the early 1980s, indicating a possible change in behavior from that point ahead, in relation to the previous period. This pattern is verified in all fourteen fluviometric stations. This “peak” does not prove the existence of a change, but it warns of a possibility that should be analyzed with the use of statistical tests.

In order to confirm this conclusion, and to better identify the year in which a change in flow characteristics occurs, a chart was produced with the accumulated flow rates, suggested by Fill (2011). In Figure 5, the graph for Santa Clara (65825000) is shown.

From the group of charts of the fourteen stations analyzed, there are two classes: one in which the change occurs around the year 1970, and the other where the changes occur around the year 1980. For a better identification of the classes, a map with the fluviometric stations was elaborated with the respective years of probable trend change suggested by the RAPS charts, in addition

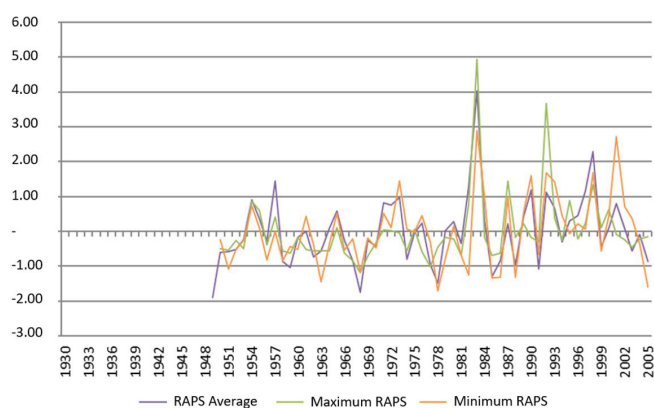


Figure 4. RAPS Chart - Santa Clara (65825000).

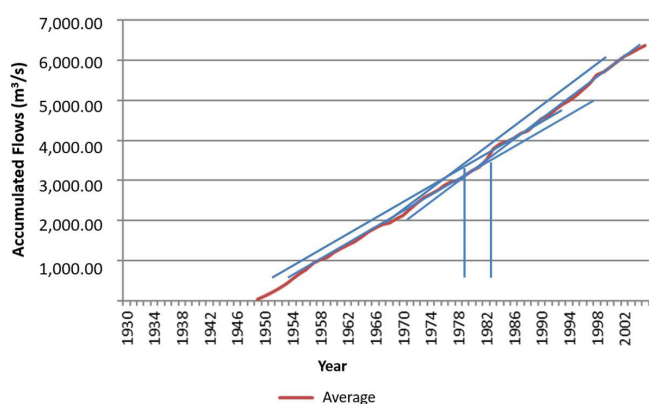


Figure 5. Average of accumulated flow rates - Santa Clara (65825000).

to the accumulated flows, as shown in Figure 6. The blue circles identify the observed classes.

From Figure 6, it is possible to notice that the first group of stations coincides with the upper part of the basin, of less recent urbanization and agricultural development, whereas the second group has its stations located in the downstream part of the basin, where agricultural development happened more recently. The exception to this pattern is the Cataratas Falls fluviometric station that drains almost the entire basin and includes both regions, therefore susceptible to be influenced by the hydroelectric plants located upstream.

Thus, the seasons were divided into two groups: in the first, the series were divided in half, from 1930 to 1969 and from 1971 to 2005; in the second, the series were divided in half from 1930 to 1979 and from 1981 to 2005. The first division was made in the middle of each historical series, while the second division was inspired by the subjective visual analysis of Figures 4, 5 and 6.

In order to verify the significance of the change in slope for the regression lines of the accumulated flows in a more precise way, Student's t test was used again.

Considering the division in half of each historical series, in the regressions performed in the sum of annual flows, the null hypothesis $\beta_1 = \beta_2$ was rejected in all cases for average flows and accepted in only one case for maximum flows (65010000). In the case of minimum flows, there were nine cases of acceptance and five cases of rejection of the null hypothesis. The stations were grouped into two sub-basins called *Alto* (Upper) and *Baixo* (Lower) Iguaçu (upstream and downstream of União da Vitória), for the purposes of this technical note. Based on this division, it was found

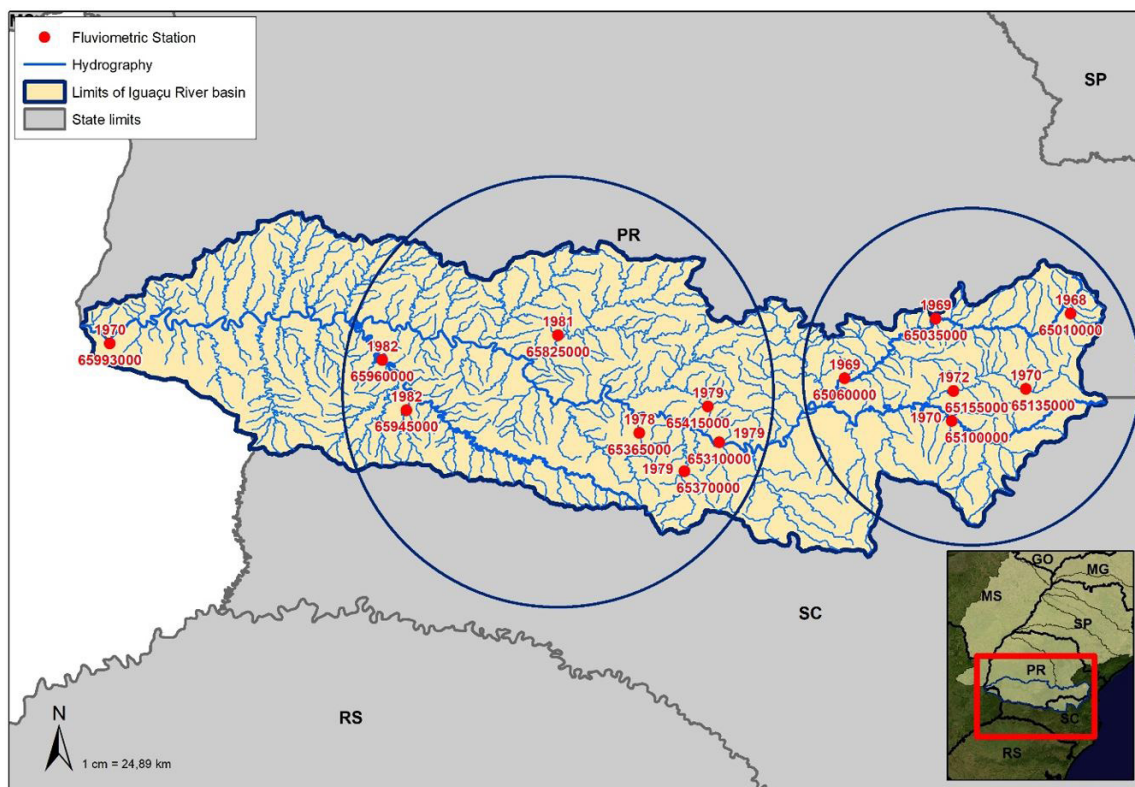


Figure 6. Possible year of linear trend change.

that in *Alto* (Upper) Iguaçu there were five cases of acceptance and only two of rejection of the null hypothesis. In the *Baixo* (Lower) Iguaçu four cases of acceptance and three of rejection.

For the division of the subsamples based on the year defined by the visual analysis of the temporal graphs, also considering the sum of the annual flows, the null hypothesis $\beta_1 = \beta_2$ was accepted for average flows only at the Fazendinha stations (65010000) and Porto Vitória (65365000) and in none of the cases for maximum flows. In the case of minimum flows, there were five cases of acceptance and nine cases of rejection of the null hypothesis. When the stations were divided into *Alto* (Upper) and *Baixo* (Lower) Iguaçu (upstream and downstream of Uniao da Vitoria), there were three cases of acceptance of the null hypothesis in *Alto* (Upper) Iguaçu and two cases in *Baixo* (Lower) Iguaçu.

It was then concluded that there was a change in the average and maximum annual flows. For the minimum annual flows there was a change in only some of the stations analyzed.

Hypothesis testing

For the use of the Kolmogorov-Smirnov test, the null hypothesis was considered as the expected behavior for the random variable that can be modeled by the normal distribution. Since the distribution of flow probabilities can often be described by a log-normal distribution (Chow, 1954; Loucks & van Beek, 2005), the Kolmogorov-Smirnov test was applied to the logarithms of average, maximum and minimum annual flows, as suggested in Fill (2011). In this case, the test accepted the null hypothesis

that the random variable (ln Q) can be modeled by the normal distribution, which means a log-normal flow distribution.

Considering the results in the Autocorrelation Coefficient, only the Fazendinha station (65010000) rejected the null hypothesis that the logarithms of the average and minimum flows are series independent. In this case, the test was applied to the residuals of the flow logarithms, according to the model proposed in Fill et al. (2012).

After verifying normality and autocorrelation, parametric and nonparametric statistical tests were applied to more rigorously check the stationarity of the hydrological series.

Parametric tests were always applied to flow logarithms, while non-parametric tests used the flow information directly. Average, maximum and minimum annual flows were considered.

For the Student's t tests case, F of Snedecor and Mann-Whitney, two different groups were used for *Alto* (Upper) and *Baixo* (Lower) Iguaçu. In the first, the series were divided in half and between the years 1930 to 1969 and 1971 to 2005; and in the second, the series were divided in half and between the years 1930 to 1979 and 1981 to 2005. It is important to notice that in the Spearman and Wald-Wolfowitz tests there is not any definition in subsamples according to the method. The results of the various tests are shown in Tables 2 and 3, with the slope test of the regression lines altogether.

From the results shown in Table 3, it is possible to notice that the behavior of the Wald-Wolfowitz test is not consistent with the other tests, which is why it was disregarded in the analysis. The basin was also divided into *Alto* (Upper) and *Baixo* (Lower) Iguaçu with division in Uniao da Vitoria, since the physiographic features of

Table 2. Test Results Summary - Division in Half (number of rejections H_0).

Test	Variable	<i>Alto</i> (Upper) Iguaçu (n=7)			<i>Baixo</i> (Lower) Iguaçu (n=7)		
		A	B	C	A	B	C
R	$\sum Q$	7	6	2	7	7	3
MW	Q	6	4	2	6	7	7
S	Q	7	5	2	4	6	6
WW	Q	1	0	0	0	0	2
t	logQ	7	4	4	4	4	1
F	logQ	1	0	3	0	1	2
t or F	-	7	4	5	4	4	3
Total (MW, S and t or F)		20	13	9	14	17	16

Note: n = total of fluviometric stations analyzed; A = average; B = maximum; C = minimum; R = Regression $\beta_1 = \beta_2$; MW = Mann-Whitney; S = Spearman; WW = Wald-Wolfowitz; t = Student's t; F = F from Snedecor.

Table 3. Test Results Summary - Division in the Defined Period (number of rejections H_0).

Test	Variable	<i>Alto</i> (Upper) Iguaçu (n=7)			<i>Baixo</i> (Lower) Iguaçu (n=7)		
		A	B	C	A	B	C
R	$\sum Q$	6	7	4	6	7	5
MW	Q	6	4	2	6	7	7
S	Q	7	5	2	4	6	6
WW	Q	1	0	0	0	0	2
t	logQ	7	4	3	5	4	1
F	logQ	1	0	0	0	1	1
t or F	-	7	4	3	5	4	2
Total (MW, S and t or F)		20	13	7	15	17	15

Note: n = total of fluviometric stations analyzed; A = average; B = maximum; C = minimum; R = Regression $\beta_1 = \beta_2$; MW = Mann-Whitney; S = Spearman; WW = Wald-Wolfowitz; t = Student's t; F = F from Snedecor.

Table 4. Values α_c for Composite test ($p = 0.05$).

kcrit	Pr ($k \geq k_{crit}$)	
	m=7	m=14
0	1.0000	1.0000
1	0.3017	0.5123
2	0.0444	0.1530
3	0.0038	0.0301

these sub-basins (slope, type and use of soil, precipitation) are notably different. There was a certain inconsistency in the results obtained, with several locations showing aspects of stationary and others not stationary. There was also a considerable variation in results between average, maximum and minimum flows, as well as between *Alto* (Upper) and *Baixo* (Lower) Iguaçu. Comparing the partition sub-samples cases in the middle of the total period, or in the suggested year at the visual analysis of temporal graphs, remarkable differences were not perceived.

Considering the *Alto* (Upper) and *Baixo* (Lower) Iguaçu basins as hydrologically distinct, but supposing that each one of these sub-basins is homogeneous in terms of flow stationarity, a compound was considered for the seven stations located in each one of the sub-basins.

Table 4 shows that for seven locations with $p = 0.05$ and $k_{crit} = 2$, the compound test significance level $\alpha_c = P_r(k \geq 2|H_0) = 0.044$ and, therefore, if two or more places are rejected individually, the null hypothesis composed $H_0 : \mu_i^j = \mu_2^j, i = 1, 2, \dots, m$, is rejected with a type I error possibility of 4.4%. If we there are three or more rejected sites this probability is 0.4%.

For the division of subsamples in half and considering a composite test with $k_{crit} = 2$, ($\alpha = 0.044$), the compound null hypothesis can be rejected both by the Mann-Whitney test and by the Spearman test for the average, maximum and minimum annual flows in both sub-regions.

For the subsamples divided in the suggested year by the temporal chart of accumulated flows and considering a compound test with $k_{crit} = 2$, ($\alpha = 0.044$), the null hypothesis of homogeneity can also be rejected, both by the Mann-Whitney test and by the Spearman coefficient.

Likewise, analyzing the number of rejections by parametric tests (Student's t and Snedecor's F) and considering the composite test with $k_{crit} = 2$, ($\alpha = 0.044$), it can be concluded that non-stationarities, when they exist, are essentially in the average and not in the flow variance.

These interpretations allow us to affirm, with a reasonable degree of certainty, that the flows in the Iguaçu River basin are not stationary on average but can be assumed to be stationary in the variance.

CONCLUSIONS

This technical note addresses a relevant issue for the management of water resources: the problem of stationary hydrological series.

The detection of stationarity can be done through the application of statistical tests, among which, it is worth mentioning the preferential use of non-parametric tests, as they do not depend

on arbitrary assumptions about the underlying flow distributions (Loucks & van Beek, 2005). Because of that, the Mann-Whitney test is proposed to check stationarity, whenever there is some evidence of a defined period for changing statistical properties. When this evidence does not exist, Spearman's test can be recommended, where division into subsamples is not necessary.

The parametric tests t of Student and F of Snedecor, despite being strictly valid only for proportionately distributed variables, allow, to identify if the non-stationarity series is in the average, in the variance or in both. As the flows in general are not normally distributed, in this case there is a need to use reconstructed variables conveniently.

In this condition, the compound test can be perceived as a type of regional stationarity analysis. In that sense, it is suggested to create a territorial division on the hydrographic basin into homogeneous sub-basins. Based on the case analyzed, the sub-basins adopted, *Alto* (Upper) and *Baixo* (Lower) Iguaçu, have very different physiographic patterns (slope, soil type, land use). The application of the compound test to each of these sub-basins concludes that there is no stationarity in all cases of the annual series regarding maximum and minimum average flows for 7 days.

For the individual analysis of each fluviometric station considered, the results revealed both cases in which the stationarity hypothesis could be rejected, as well as cases in which it could not. There was also a greater tendency for non-stationarity in *Alto* (Upper) Iguaçu, since in *Baixo* (Lower) Iguaçu the individual analyzes for each station were not conclusive, with a tendency for stationarity for minimum flows.

The Wald-Wolfowitz test did not present coherent results with the other tests performed and therefore, it is believed that it cannot be recommended for stationarity analyzes.

A method for series analysis proposed by Fill et al. (2012) with series dependence was also used, using allegedly independent residues in the tests.

REFERENCES

- Agência Nacional de Águas – ANA. (2013). Portal *HidroWeb*. Brasília: ANA. Retrieved in 2013, July 2, from: http://www.snirh.gov.br/hidroweb/publico/medicoes_historicas_abas.jsf
- Alemaw, B. F., & Chaoka, T. R. (2002). Trends in the flow regime of the southern african rivers as visualized from Rescaled Adjusted Partial Sums (RAPS). *African Journal of Science and Technology*, 3(1), 69-78. <http://dx.doi.org/10.4314/ajst.v3i1.15288>.
- Alexandre, G. R. (2009). *Estudo para identificação de tendências do regime pluvial na região metropolitana de Belo Horizonte a partir de métodos estatísticos e modelos climáticos* [Dissertação de mestrado]. Universidade Federal de Minas Gerais, Minas Gerais.
- Buishand, T. A. (1984). Tests for detecting a shift in the mean of hydrological time series. *Journal of Hydrology*, 73(1-2), 51-69. [http://dx.doi.org/10.1016/0022-1694\(84\)90032-5](http://dx.doi.org/10.1016/0022-1694(84)90032-5).

- Canambra Engineering Consultants Limited. (1969). *Power study of South Brazil*. New York: Republic of Brazil United Nations Development Programme.
- Chow, V.T. (1954). The log-probability law and its engineering applications. *Proceedings of the American Society of Civil Engineers*, 80(536), 1-25.
- Companhia Paranaense de Energia – COPEL. (1974). *Usina Hidrelétrica de Foz do Areia. Relatório de Engenharia*. Curitiba: COPEL.
- Companhia Paranaense de Energia – COPEL. (1978). *Usina Hidrelétrica de Salto Caxias. Estudo de Viabilidade* (Vol. 1). Curitiba: COPEL.
- Devore, J. L. (2012). *Probability and statistics for engineering and the sciences* (8th ed.). Sao Luis Obispo: California Polytechnic State University.
- Fill, H. D. (1994). *Improving flood quantile estimates using regional information* (Dissertation). Cornell University, Ithaca.
- Fill, H. D. (2011). Análise da estacionariedade das vazões do rio Iguaçu em União da Vitória. In *Proceedings of the XIX Brazilian Symposium of Water Resources*. Maceió: ABRH.
- Fill, H. D. (2017). Análise da série temporal das cheias do rio Iguaçu. In *Proceedings of the XXII Brazilian Symposium of Water Resources*. Florianópolis: ABRH.
- Fill, H. D., Marques, M., & Mannich, M. (2012). Análise de estacionariedade de vazões medias anuais com dependência em série. In *Proceedings of the XXV Latin American Congress of Hydraulics*. San Jose: IAHR.
- Johnston, J. (1984). *Econometric methods* (3rd ed.). New York: McGraw-Hill.
- Kundzewicz, Z. W., & Robson, A. (2000). *Detecting trend and other changes in hydrological data* (No. 1013, pp. 158). Switzerland: World Climate Programme.
- Loucks, D. P., & van Beek, E. (2005). *Water resource systems planning and analysis: an introduction to methods, models and applications*. (Studies and Reports and Hydrology). Paris: United Nations Educational, Scientific, and Cultural Organization.
- Naghetini, M., & Pinto, E. J. A. P. (2007). *Hidrologia Estatística*. Belo Horizonte: Mineral Resources Research Company.
- Paraná - National Water Agency. (2007). *Plano da bacia do Alto Iguaçu e afluentes do Alto Ribeira*. Curitiba: Governo do Estado do Paraná.
- Pedrozo, C., & Fill, H. D. (2017). Impacto das alterações climáticas na geração de energia elétrica caso da usina Foz do Areia. In *Proceedings of the XXII Brazilian Symposium of Water Resources*. Florianópolis: ABRH.
- Spanos, A. (1980). *Statistical foundations of econometric modelling*. Cambridge: Cambridge University Press.
- Tozzi, B. K. M. (2014). *Verificação da estacionariedade de series hidrológicas de vazões na bacia do rio Iguaçu* [Dissertação de Mestrado]. Universidade Federal do Paraná, Paraná.
- Tröger, F. H., & Gondim, F. J. G. C., Nobrega, M. T., & Sugai, M. V. B. (2004). Verificação da estacionariedade das series anuais de vazões naturais das usinas hidrelétricas de Três Marias e Sobradinho. In *Proceedings of the VII Northeast Symposium of Water Resources*, Sao Luis: ABRH.

Authors contributions

Bruna Kiechaloski Miró Tozzi: Lead author, bibliographical review, development and application of methodology, statistical analysis and discussion results.

Heinz Dieter Oskar August Fill: Development of methodology, statistical analysis and discussion of results.