

Description of a new species of the spider genus *Syntrechalea* (Araneae: Lycosoidea: Trechaleidae) from Colombia

Estevam L. C. da Silva & Arno A. Lise

Laboratório de Aracnologia, Museu de Ciências e Tecnologia, Pontifícia Universidade Católica do Rio Grande do Sul. Avenida Ipiranga 6681, Prédio 40, sala 167, 90619-900 Porto Alegre, Rio Grande do Sul, Brasil.

E-mail: estevamsilva@gmail.com; lisearno@pucrs.br

ABSTRACT. A new species of the spider genus *Syntrechalea* F.O.P.-Cambridge, 1902 is described and illustrated based on material collected in Loreto Mocagua, Colombia. Representatives of this spider genus exhibit an arboreal foraging behavior and are distinguished from the other genera of Trechaleidae by the flattened carapace, long legs and flexible metatarsi and tarsi. New records on the distribution of *Syntrechalea tenuis* F.O.P.-Cambridge, 1902 in Colombia are presented.

KEY WORDS. Distribution; Neotropical region; spiders; taxonomy.

RESUMO. Descrição de uma nova espécie de *Syntrechalea* (Araneae: Lycosoidea: Trechaleidae) da Colômbia. Uma espécie nova do gênero *Syntrechalea* F.O.P.-Cambridge, 1902 é descrita e ilustrada, a partir de material coletado em Loreto Mocagua, Colômbia. Os representantes deste gênero apresentam o hábito arbóreo de forragear e são distinguidos dos demais gêneros de Trechaleidae pela carapaça achatada, pernas longas e metatarsos e tarsos flexíveis. Novos registros de distribuição de *Syntrechalea tenuis* F.O.P.-Cambridge, 1902 na Colômbia são apresentados.

PALAVRAS-CHAVE. Aranhas; distribuição; região Neotropical; taxonomia.

Syntrechalea F.O.P.-Cambridge, 1902 was recently revised by CARICO (2008) and comprises eight species, four of them newly described (*S. adisi*, *S. brasilia* from Brazil, *S. caporiaccoi* from Venezuela, *S. napoensis* from Ecuador, and *S. caballero* from Paraguay).

The representatives of this spider genus are primarily recognized by the long and slender legs, flattened carapace, and flexible tarsi and metatarsi, character shared with *Hesydrus* Simon, 1898, its closely related genus (by the general shape of median apophysis and flexible tarsi and metatarsi). The retrolateral tibial apophysis is bifurcated with the ectal division narrow and the ental division prominent and flattened. The female epigynum is varied but has the middle field distinct and in a posterior position and surrounded by the anterior field. Most of these spiders are arboreal, foraging on the tree trunks in the inundated forests of Northern Brazil (CARICO 2008).

The objective of this work is to describe and illustrate a new species of *Syntrechalea* from Departamento del Amazonas, Loreto Mocagua in Colombia. New records of the distribution of *Syntrechalea tenuis* F.O.P.-Cambridge, 1902 in Colombia are presented.

MATERIAL AND METHODS

The material examined is deposited in Instituto de Ciencias Naturales de la Universidad Nacional de Colombia

(ICN, E. Florez). The nomenclature of the male palpus structures follows CARICO (1993, 2008) and SILVA *et al.* (2008). The photograph was obtained with a digital camera connected to the stereomicroscope. All the measurements are in millimeters. The abbreviations related to eyes measurements, including diameter, interdistances and median ocular quadrangle are those routinely used in spider descriptions.

Syntrechalea colombiana sp. nov.

Figs 1-6

Type. Male holotype from Loreto Mocagua, Leticia, Departamento del Amazonas, Colombia (3°50'48"S, 70°13'10"W), 15.XI.2001, C. Sandoval leg, deposited in ICN 768.

Etymology. The specific name is a noun and refers to the type locality.

Conditions of holotype. Missing tibia, metatarsus and tarsus of left legs I and II.

Diagnosis. *Syntrechalea colombiana* is similar to *S. caporiaccoi* by the shape of the ventral division of median apophysis (CARICO, 2008, fig. 24), but can be distinguished by the pointed dorsal division of median apophysis (Fig. 3).

Description. Holotype male. Total length 12.36. Carapace (Fig. 2), 5.05 long, 4.65 wide, yellowish, darker on cephalic area (Fig. 2). Clypeus light brown, darker anteriorly, 0.70 high. Anterior eye row slightly straight, 1.10 wide; posterior 2.29 wide.



Figure 1. Type locality of *Syntrechalea colombiana* sp. nov. in Colombia.

Eye diameters, interdistances, and median ocular quadrangle: AME 0.16, ALE 0.12, PME 0.46, PLE 0.20; AME-AME 0.24, AME-ALE 0.12, PME-PME 0.50, PME-PLA 0.46, MOQ, 0.94 long, frontal view, anterior width 0.58, posterior width 1.12. Chelicerae light reddish-brown, without lateral carina; promargin and retromargin of fang furrow with three teeth equidistant and equal in size. Sternum bristly, yellowish, darker at margins; 1.99 long, 2.39 wide. Labium brownish, darker at anterior margin, 0.93 long, 0.94 wide. Legs yellowish, with light brown annuli on femora, relative length: IV-I-II-III, leg measurements: I – femur 10.64/tibia-patella 13.96/metatarsus 10.37/tarsus 6.11/total 41.08; II – 9.57/11.97/9.31/5.98/36.83; III – 7.58/7.98/7.44/5.32/

28.32; IV – 11.57/11.65/12.10/7.31/42.63. Ventral pairs of macrosetae on tibiae: I-6; II-6; III-4; IV-4. Bothrium conspicuous (Fig. 5). Tarsal with three teeth (Fig. 6). Abdomen, 6.65 long, dorsum grayish, bristly, blanché due to conservation (Fig. 2). Venter light brown, scattered setae. Ventral division of median apophysis acute; guide pointed and ventrally curved (Fig. 3). Retrolateral tibial apophysis (RTA) prominent, ectal division acute at apex; ental division lobed (Fig. 4).

Female. Unknown.

Note. The examination of the type of *Syntrechalea reimoseri* (Caporiacco, 1947) showed some differences in the morphological characters, such as coloration and shape of the abdomen. Also, a juvenile female was found in the same vial as the male described in this paper, but it could not be described because it was an antepenultimate female epigynum and the somatic characters mentioned above are different from *S. reimoseri*. The localities listed in the revision of *Syntrechalea* F.O.P.-Cambridge, 1902 made by CARICO (2008) are Ecuador, Guyana (female lectotype), Peru, and Brazil. Since there is no material registered from Colombia, the association of this male with the female of *S. reimoseri* is difficult, since in the type series of *S. reimoseri*, there was also included a male that was described as a new species: *S. caporiaccoi* Carico, 2008.

Distribution. Known only from the type locality (Fig. 1).

Natural history. It is assumed to be arboreal, by its anatomical features which are similar to the other representatives of the genus.

Syntrechalea tenuis F.O. Pickard-Cambridge, 1902

Syntrechalea tenuis F.O. Pickard-Cambridge, 1902: 314, female holotype from Bugaba, Chiriquí, Panama, Champion leg. (BMNH) (not examined); Roewer, 1954: 139; Bonnet, 1956: 4225; Platnick, 2008. Carico, 2008: 120, figs 1, 8-11.

Syntrechalea porshi Reimoser, 1939: 339 (not examined); Roewer, 1954: 139; Platnick, 2008; Carico, 2008: 120. **Syn. nov.**

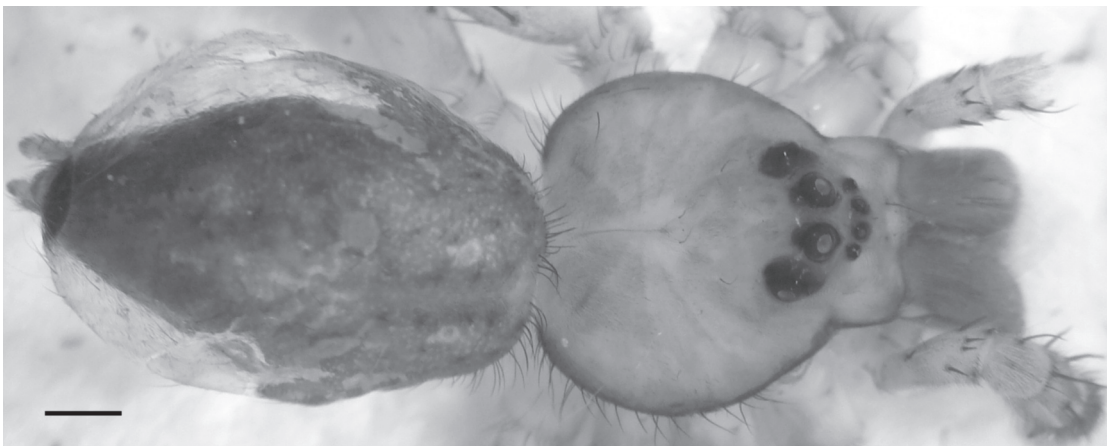
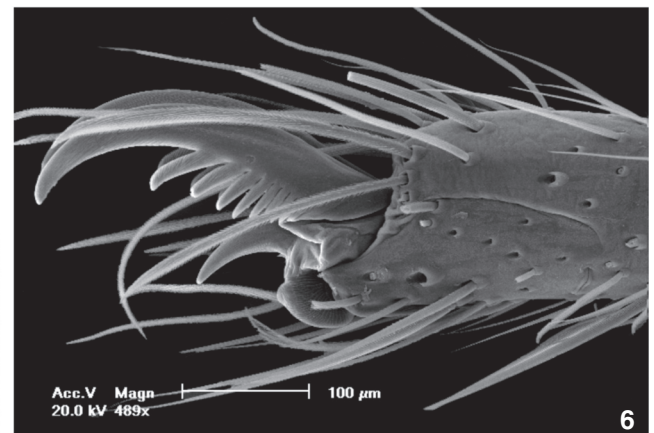
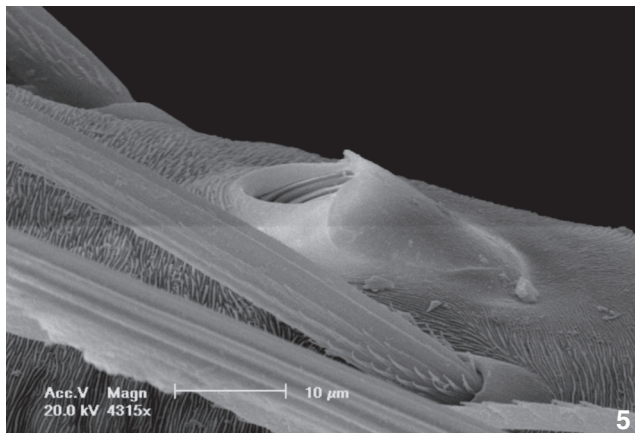
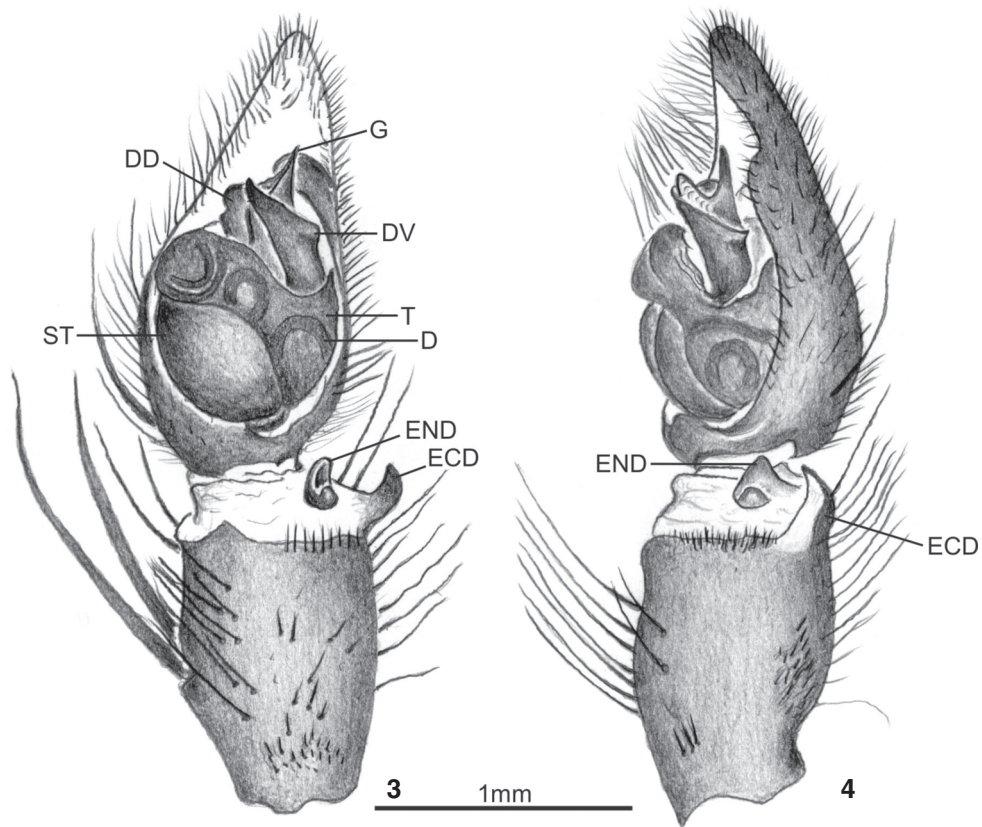


Figure 2. Habitus of *Syntrechalea colombiana* sp. nov. Scale bar: 1mm.



Figures 3-6. Morphological details of *Syntrechalea colombiana* sp. nov.: (3-4) male palpus: (3) ventral view; (4) retrolateral view; (5) detail of bothrium of right leg IV; (6) tarsal claw of right leg I. (DD) Dorsal division of median apophysis, (ECD) ectal division of RTA, (END) ental division of RTA, (RTA) retrolateral tibial apophysis, (ST) subtegulum, (T) tegulum, (VD) ventral division of median apophysis, (VP) ventrodiscal protuberance of male palpal tibia.

Distribution. Mexico, Costa Rica, Panama and Colombia.

New records. COLOMBIA, *Caqueta*: El Paujil (01°33'52"N; 75°19'55"W, 326 m), 1 male, IV.1990, unknown collector (ICN 686); *Cundinamarca*: Caqueza (04°24'32"N; 73°53'05"W, 1520 m), 1 male, 1 female, 04.IV.2002, A. Rodriguez *leg.* (ICN 1891).

ACKNOWLEDGMENTS

We wish to thank Dr. Eduardo Florez (ICN) for the loan of the type material and James E. Carico (Lynchburg College) for comments on the manuscript. The technician Maurício Paz

França (PUCRS) from the “Centro de Microscopia e Microanálises” (CEMM) for the SEM images. This study was supported by “Conselho Nacional de Desenvolvimento Científico e Tecnológico” (CNPq N° 140282/2008-4 for ELCS).

LITERATURE CITED

- BONNET, P. 1956. **Bibliographia araneorum. Analyze méthodique de toute la littérature aranéologique jusqu'en 1939.** Toulouse, Les Frères Douladoure, vol. 2, part 2, p. 919-1926.
- CARICO, J.E. 1993. Revision of the genus *Trechalea* Thorell (Araneae, Trechaleidae) with a review of the taxonomy of the Trechaleidae and Pisauridae of the Western Hemisphere. **Journal of Arachnology** 21 (3): 226-257.
- CARICO, J.E. 2008. Revision of the Neotropical arboreal spider genus *Syntrechalea* (Araneae, Lycosoidea, Trechaleidae). **Journal of Arachnology** 36 (1): 118-130.
- PICKARD-CAMBRIDGE, F.O. 1902. Arachnida - Araneida and Opiliones. *In*: F.D. GODMAN & O. SALVIN (Eds). **Biologia Centrali-Americana**. London, Zoology, II+610p.
- PLATNICK, N.I. 2008. **The World Spider Catalog version 8.5.** New York, American Museum of Natural History, available online at: <http://research.amnh.org/entomology/spiders/catalog/html> [Access: 30.V.2008].
- REIMOSER, E. 1939. Wissenschaftliche Ergebnisse der österreichischen biologischen Expedition nach Costa Rica. Die Spinnenfauna. **Annalen des Naturhistorischen Museums in Wien** 50: 328-386.
- ROEWER, C.F. 1954. **Katalog der Araneae.** Bruxelles, Institut Royal des Sciences Naturelles de Belgique, vol. 2a, 923p.
- SILVA, E.L.C.; A.A. LISE & J.E. CARICO 2008. Revision of the Neotropical spider genus *Enna* (Araneae, Lycosoidea, Trechaleidae). **Journal of Arachnology** 36 (1): 76-110.

Submitted: 30.V.2008; Accepted: 25.VIII.2008.

Editorial responsibility: Antonio D. Brescovit