

## Images in Infectious Diseases

### A Very Rare Case of Brucellosis-Related Tubo-ovarian Abscess

Handan Alay<sup>[1]</sup>, Fatma Kesmez Can<sup>[1]</sup> and Emsal Pınar Topdağlı Yılmaz<sup>[2]</sup>

[1]. Department of Infectious Diseases and Clinical Microbiology, Faculty of Medicine, Ataturk University, Erzurum, Turkey.

[2]. Department of Obstetrics and Gynecology, Faculty of Medicine, Ataturk University, Erzurum, Turkey.

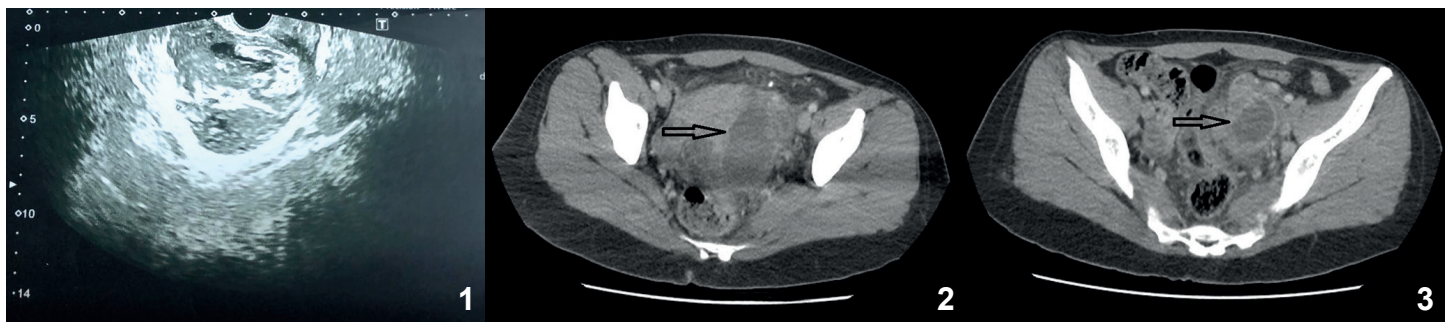


FIGURE 1: Pelvic ultrasonography showing an 8 cm diameter abscess.

FIGURE 2: Abdomino-pelvic computed tomography showing a 69×41 mm abscess adjacent to the iliac vascular structures.

FIGURE 3: Shrinkage of the abscess on the 14<sup>th</sup> day of brucellosis treatment.

A 30-year-old patient presented with persistent left inguinal pain, abdominal pain, and fever for 10 days. Abdominal examination revealed hepatomegaly, splenomegaly, and left lower quadrant and suprapubic region tenderness. An 8 cm diameter abscess was observed in abdominal ultrasonography (Figure 1). Pelvic computed tomography revealed a 69×41 mm abscess with intense inflammation in the surrounding mesenteric area extended up to the iliac vasculature (Figure 2). *Brucella* spp. was detected in a blood sample. The brucella tube agglutination test was found positive at 1/640. The patient had a history of consuming unpasteurized milk and milk products. Brucellosis was diagnosed based on clinical, laboratory, and radiological findings and the patient history. The patient received doxycycline (2×200 mg), rifampicin (1×600 mg), and trimethoprim-sulfamethoxazole (2×1) therapy. The fever decreased on the third day of treatment, and the abscess contracted (33×40 mm) after 14 days (Figure 3). The gynecologist did not

plan surgery due to the clinical and laboratory response and the shrinkage of abscess with treatment.

Brucellosis, a zoonotic infection, is an important public health problem in many developing countries<sup>1</sup>. Tubo-ovarian abscess frequently exhibits an acute course together with genitourinary and systemic symptoms<sup>2</sup>. Brucellosis can affect many organs requiring a multidisciplinary approach for patient management. This etiology should be considered in differential diagnosis of patients with tubo-ovarian abscess in endemic regions.

#### CONFLICT OF INTEREST

The authors declare that there is no conflict of interest.

#### REFERENCE

- Centers for Disease Control (CDC). Brucellosis Reference Guide 2017. <https://www.cdc.gov/brucellosis/pdf/brucellosis-reference-guide.pdf> (Accessed on May 23, 2019).
- Bosilkovski M, Krteva L, Dimzova M, Kondova I. Brucellosis in 418 patients from the Balkan Peninsula: exposure-related differences in clinical manifestations, laboratory test results, and therapy outcome. *Int J Infect Dis.* 2007;11(4):342-7.

Corresponding Author: Dr. Handan Alay.

e-mail: alayhandan@gmail.com

0000-0002-4406-014X

Received 25 October 2019

Accepted 11 December 2019