

# SCIENTIA AGRICOLA

## ERRATUM

• *Scientia Agricola*, v.68, n.4, July/August, 2011

In the paper: "Natural infection of several *Coffea* species and hybrids and *Psilanthus ebracteolatus* by the Coffee ringspot virus (CoRSV)", the following Figure 1 should be included

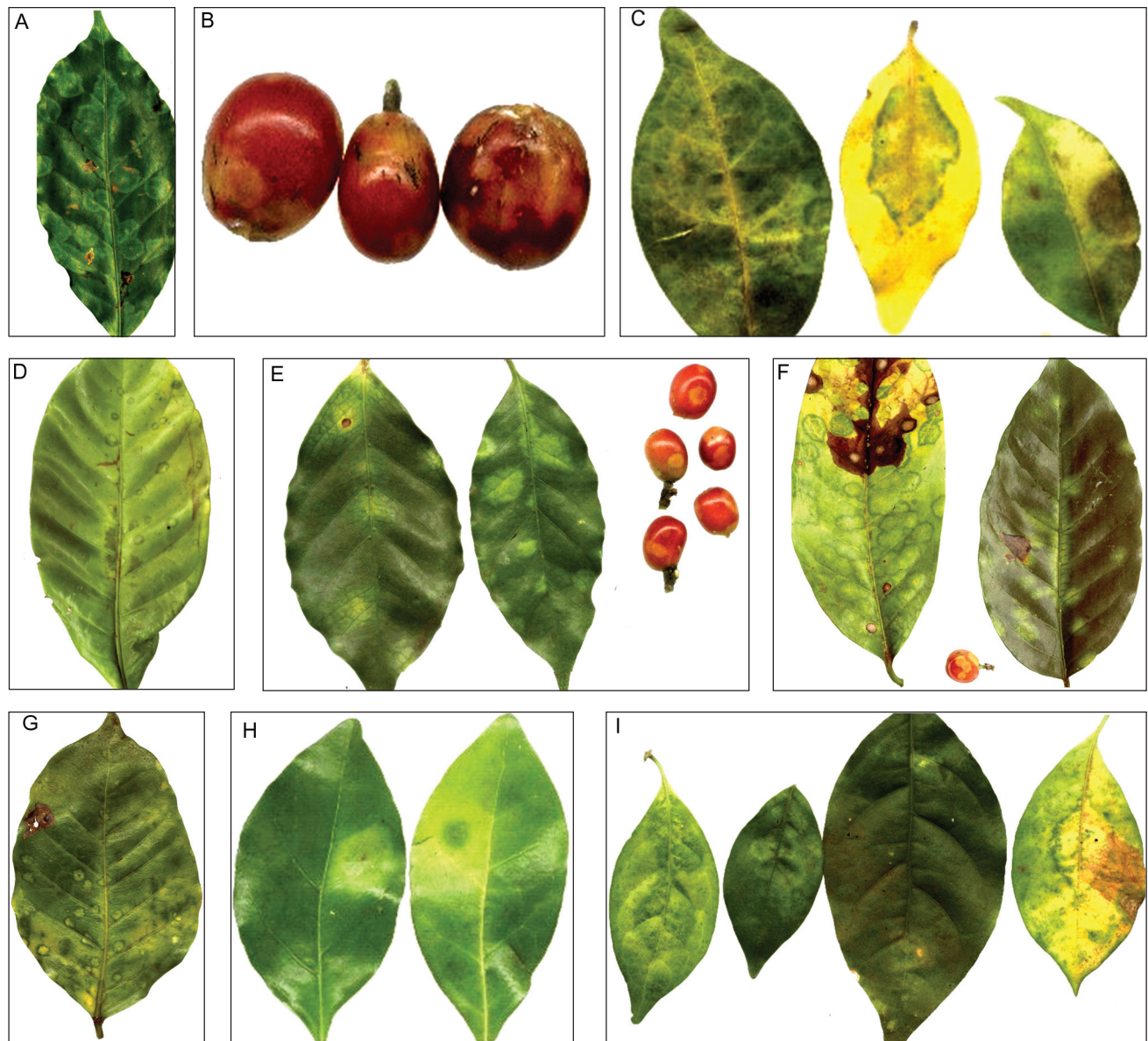


Figure 1 – A-I. Ringspot symptoms in *Coffea* species and hybrids and *Psilanthus ebracteolatus*. A- Leaf of *C. arabica*. B. Berries of *C. canephora* cv. Robusta. C. leaves of *C. kapakata*. D. Leaf of *C. dewevrei* cv. Excelsa. E. Leaves and berries of the Hybrid *C. arabica* × *C. racemosa*. F. Leaf and berry from Híbrido de Timor (derivative from a natural hybrid of *C. arabica* × *C. canephora*). G. Leaf of the hybrid Piatã (*C. arabica* × *C. dewevrei*). H. Leaves of *C. racemosa*. I. Leaves of *P. ebracteolatus*, a close relative of the genus *Coffea*.