

## RESEARCH ARTICLE

# Monogeneans from Catfishes in Lake Tanganyika. I: Two new species of *Bagrobdella* (Dactylogyridae) from *Auchenoglanis occidentalis* (Siluriformes: Claroteidae)

Archimède Mushagalusa Mulega<sup>1,2,3</sup>, Fidel Muterezi Bukinga<sup>2</sup>, John Francis Akoumba<sup>4</sup>, Pascal Masilya Mulungula<sup>2,5</sup>, Antoine Pariselle<sup>1,6</sup>

<sup>1</sup>Laboratory of Biodiversity, Ecology and Genome, Faculty of Sciences, Mohammed V University. 10000 Rabat, Morocco.

<sup>2</sup>Département de Biologie, Centre de Recherche en Hydrobiologie. B.P. 73, Uvira, Democratic Republic of the Congo.

<sup>3</sup>Hasselt University, Centre for Environmental Sciences, Research Group Zoology: Biodiversity & Toxicology. Diepenbeek, Belgium.

<sup>4</sup>Laboratory of Parasitology and Ecology, Faculty of Science, University of Yaoundé I. P.O. Box 812, Yaoundé, Cameroon.

<sup>5</sup>Unité d'Enseignement et de Recherche en Hydrobiologie Appliquée, Institut Supérieur Pédagogique de Bukavu. Bukavu, Democratic Republic of the Congo.

<sup>6</sup>ISEM, CNRS, Université de Montpellier, IRD. 34095 Montpellier, France.

Corresponding author: Antoine Pariselle ([antoine.pariselle@ird.fr](mailto:antoine.pariselle@ird.fr))

<https://zoobank.org/8C8A77CC-BFE7-46E9-B364-58AEC22B8A6A>

**ABSTRACT.** In the framework of the study of Siluriform fish monogeneans of Lake Tanganyika, we described two new species of *Bagrobdella* Paperna, 1969 from *Auchenoglanis occidentalis* (Valenciennes, 1840). *Bagrobdella vanhovei* sp. nov. is characterized by the morphology of its MCO which is unique among its congeners, presenting a non-terminal opening, whereas the other species have a terminal opening, and *Bagrobdella vansteenbergei* sp. nov. characterized by the size of its hooks, which are almost all of the same size, and its male copulating organ with a unique shape: a sub-terminal opening and no membrane surrounding. The Multivariate analysis done on morphometrical characters shows that the new and already described species are well individualized, except for *Bagrobdella parauchenoglanii* Akoumba, Pariselle, Tombi & Bilong Bilong, 2017 and *Bagrobdella fraudulenta* Euzet & Le Brun, 1990 (but these two species are easily distinguishable by their morphology), and that *B. vanhovei* sp. nov. has a great intra-specific morphometrical variation.

**KEY WORDS.** *Bagrobdella vanhovei* sp. nov., *Bagrobdella vansteenbergei* sp. nov., Congo Basin, East Africa, intraspecific variation, over dispersion.

## INTRODUCTION

Lake Tanganyika is the oldest of the East African Great Lakes (Cohen et al. 1993). Its 3.200 km<sup>2</sup> of surface area is unevenly distributed among four countries, including the Democratic Republic of the Congo in the West (14.800 km<sup>2</sup> or 45%), Tanzania in the East (13.500 km<sup>2</sup> or 41%), Burundi in the North (2600 km<sup>2</sup> or 8%) and Zambia in the South (200 km<sup>2</sup> or 6%) (Cohen et al. 1993, Fermon 2007) (Fig. 1).

It stands out from the rest of the world's lakes by its richly diverse ichthyofauna, which makes it an important hotspot for the world's freshwater lacustrine biodiversity (Coulter et al. 1986) and a 'natural laboratory' for evolutionary biologists (Martens 1997, Langenberg et al. 2003, Albrecht & Wilke 2008, Cristescu et al. 2010).

The cichlid fish of Lake Tanganyika have received particular attention, they are phenotypically, ecologically and genetically highly diverse (Nishida 1991, Salzburger et al. 2002, 2005). With 239 endemic species out of the 241 described (an endemism rate of 99%) (Ronco et al. 2020, 2021), Lake Tanganyika show the highest degree of endemism compared to other great lakes in Africa and the Americas (Salzburger et al. 2014). In addition to calling its importance to the study of biodiversity, the Cichlids of Lake Tanganyika have also attracted the attention of parasitologists, primarily in host biogeography, systematics and parasite evolution (e.g., Bates 1997, Grégoir et al. 2015, Pariselle et al. 2011, 2015, Raeymaekers et al. 2013, Van Steenberge et al. 2015, Vanhove et al. 2013, 2015, 2016).

The non-cichlids of Lake Tanganyika, less diversified than the Cichlidae, have attracted very little attention of scientists.

However, they are represented by 75 species belonging to 11 families, and have a rate of endemism of 59%. Species of some of these families, such as Clupeidae and Latidae, have already been the subject of some ecological (Coulter et al. 1986), parasitological (Kmentová et al. 2018, 2020) and genomic (De Keyser et al. 2019) studies. Siluriformes represent five (Bagridae, Claroteidae, Clariidae, Mochokidae, and Malapteruridae) of these 11 families, making Lake Tanganyika the most diverse lake in Siluriformes than any other lake in the world (Fermon 2007, Peart et al. 2014). However, nothing is known about the parasites of these hosts.

The history of the Lake Tanganyika parasitic fauna began with the description of *Ancyrocephalus limnothrissae* Paperna, 1973 from the gills of *Limnothrissa miodon* (Boulenger, 1906). This species was redescribed under the name *Kapentagyris limnothrissae* by Kmentová et al. (2018). The second description of Lake Tanganyika's monogenean species was *Gyrodactylus sturmbaueri* Vanhove et al., 2011, *G. thysi* Vanhove et al., 2011 and *G. zimbae* Vanhove et al., 2011 by Vanhove et al. (2011). Since then, the number of studies in Lake Tanganyika has increased, with particular attention given to *Cichlidogyrus* Paperna, 1960 monogenean of Cichlid fish, which currently has 39 published species (Rahmouni et al. 2017, 2018, Rahmouni 2021).

This is the first study that describes *Bagrobdella* species in Lake Tanganyika. To date, four species are described from Ghana, Uganda, Mali and Cameroon: *Bagrobdella auchenoglanii* Paperna, 1969, *B. fraudulentata* Euzet & Le Brun, 1990 and *B. anthopenis* Euzet & Le Brun, 1990 (Euzet and Le Brun 1990) from *Auchenoglanis occidentalis* (Valenciennes, 1840), and *B. parauchenoglanii* Akoumba, Pariselle, Tombi & Bilong Bilong, 2017 from *Parauchenoglanis monkei* (Keilhack, 1910) (Akoumba et al. 2017).

## MATERIAL AND METHODS

### Sampling

The parasites described in this study were collected from 11 specimens of *A. occidentalis*. Fish were captured in the North-Western part of the lake, a few meters from the orthodox church in Uvira (North of this part) and at the Mouth of River Mutambala (South of this part) (Fig. 1). The hosts were euthanized by severing their chordal spines, and identified on site as *A. occidentalis* using the Fermon et al. (2012) keys. The gills and a small section of the pectoral fins were stored in 96% ethanol.

Fish DNA isolation was carried out according to the protocol of Aljanabi and Martinez (1997). Vouchers were kept in the collection of CRH-Uvira (DRC).

The gills were examined under a Wild Heerbrugg® M8 binocular. The monogeneans were recovered using an entomologist needle and some individuals were mounted in a drop of Hoyer's medium (Anderson 1954) on a slide, then covered with a coverslip to flatten the specimens and highlight the sclerotized structures. The slides were left for 24 hours in horizontal position before sealing the coverslip with Glyceel (Bates 1997). Other individuals were mounted using tap water and identified

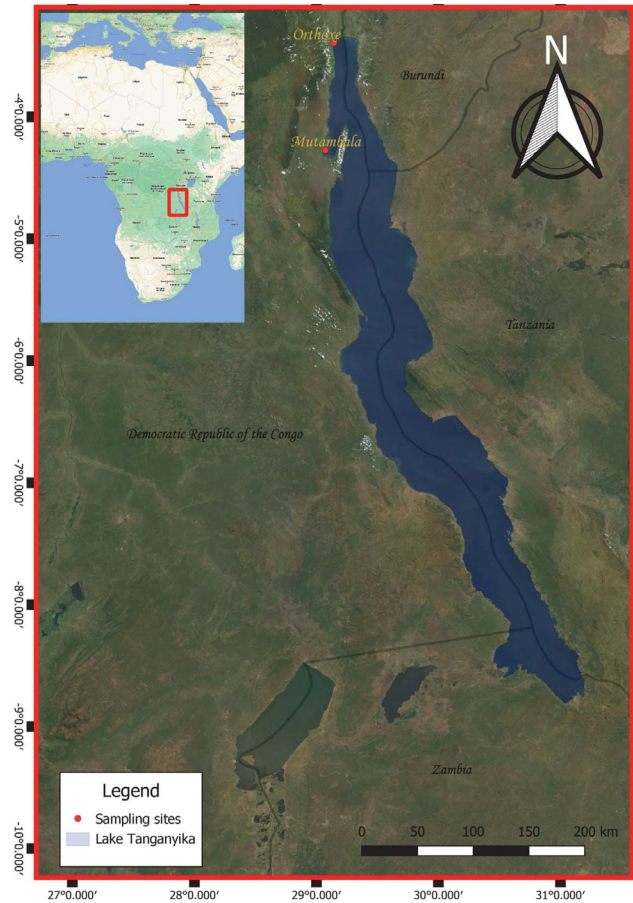


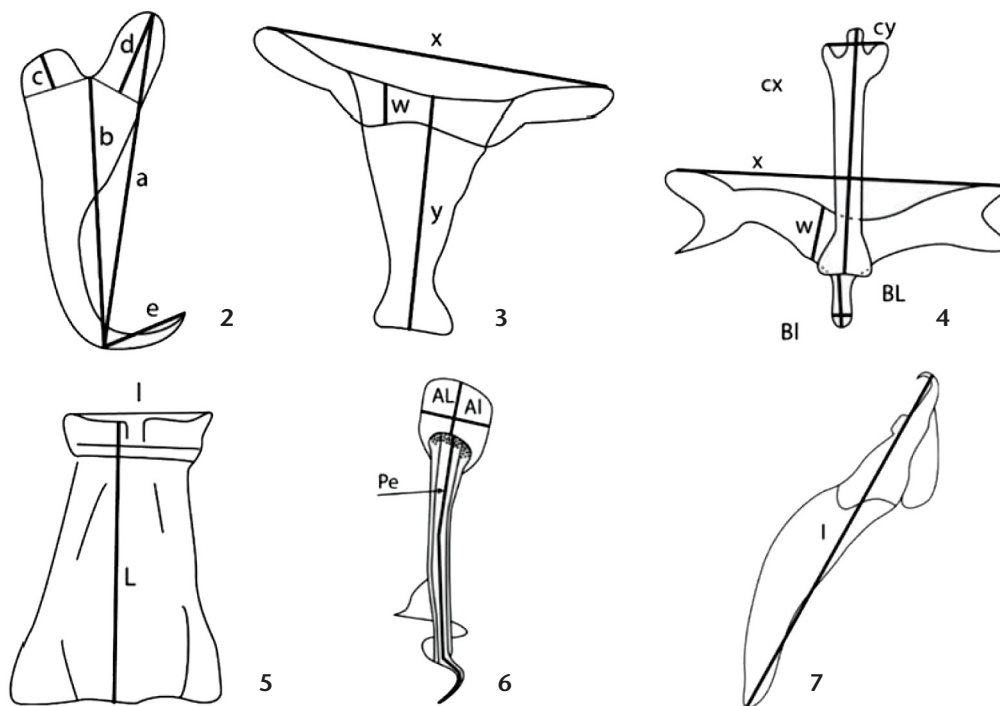
Figure 1. Sampling sites localities.

under a Leica® DM 2500 microscope equipped with a digital camera (Leica DMC 4500).

### Morphometric analysis

Measurements were based on Euzet and Le Brun (1990), and taken using LAS version 4.12.0 (Figs 2–7), and given in µm by the range in parentheses, and number of individuals. Drawings of the sclerotized parts of the Monogeneans were made with Corel Draw® 2019 software using pictures taken from the camera. All analyses were performed using R 4.1.2 software (R Core Team 2022).

Data from 45 individuals of one new species, 10 individuals of the other, and 10 individuals of *B. parauchenoglanii*, were subjected to a Principal Component Analysis (PCA). This analysis was done using the FactoMineR (Husson et al. 2020) and factoextra (Kassambara and Mundt 2020) packages in R. *Bagrobdella auchenoglanii*, *B. fraudulentata* and *B. anthopenis*, each one represented by the mean values of the analyzed parameters obtained in Euzet and Le Brun (1990) were added to the analysis as supplementary individuals.



Figures 2–7. Measurement scheme of the sclerotized structures of *Bagrobdella* spp.: (2) anchor, a: total length; b: blade length; c: shaft length; d: guard length; e: point length. (3) Dorsal bar, x: horizontal length; y: vertical length; w: width. (4) Ventral bar, x: horizontal length; cx: length of median projection; cy: width of median projection; BL: length of outgrowth; BL: width of outgrowth. (5) Trapezoidal piece, L: length; l: width. (6) Male copulatory complex, Pe: length of penis, AL: length of bulb; Al: width of bulb. (7) Length of hook.

To comply with the regulations set out in article 8.5 of the amended 2012 version of the International Code of Zoological Nomenclature (ICZN), details of the new species were submitted to ZooBank. For each new species, the Life Science Identifier (LSID) is reported in the taxonomic summary.

Types were deposited in the Helminth collections of the Royal Museum for Central Africa (MRAC, Tervuren, Belgium), of the Muséum national d'Histoire naturelle (MnHn, Paris, France) and of the Iziko South African Museum, Cape Town, Republic of South Africa (SAMC)

## RESULTS

The identification of host species was confirmed by the molecular analysis, and the sequences were deposited in Genbank (Identification number ON682514). Gills of eleven *A. occidentalis* specimens were examined for parasite infection. Seven out of eleven hosts were found to be parasitized. The most parasitized fish host is the sole specimen caught at the Mouth of Mutambala River. This individual hosted a total of 286 Monogeneans, 269 *Bagrobdella vanhovei* sp. nov. and 17 *B. vansteenbergei* sp. nov. The other ten individuals that were captured off the Orthodox Church of Uvira possessed only *Bagrobdella vanhovei* sp. nov. individuals. Among

them, four had no monogeneans, three had one individual, and the other three hosts had, five, six and 35 individuals respectively.

The two new species of *Bagrobdella* which were found are described herein.

## TAXONOMY

### *Bagrobdella vanhovei* Mushagalusa Mulega & Pariselle, sp. nov.

Fig. 8

<https://zoobank.org/A7869408-CD17-4AB3-BFDC-9362C5DA9F13>

Type-host. *Auchenoglanis occidentalis* (Valenciennes, 1840).  
Site of infection. Gills.

Type locality. Mouth of Mutambala River (29°04.4042'E, 04°16.4598'S) and off the Orthodox church of Uvira (29°08'32.6"E, 03°23'42.0"S) (DRC) (Fig. 1).

Studied material. 78 specimens mounted in Hoyer's medium.

Number of hosts examined. 11.

Prevalence. 6/11 = 54%.

Mean intensity. 318/6 = 53.

Abundance. 318/11 = 28.9.

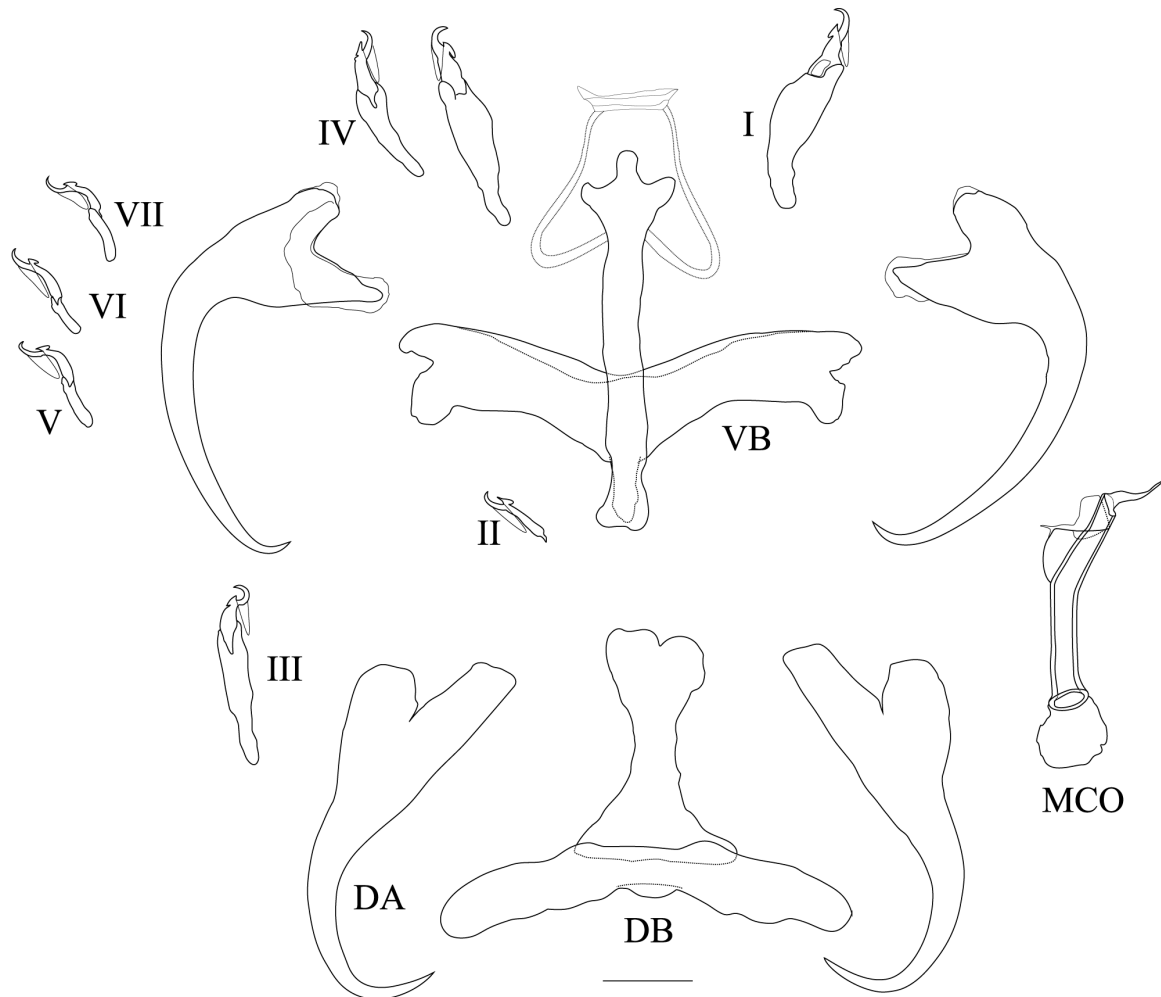


Figure 8. *Bagrobdella vanhovei* sp. nov. haptoral structure and MCO. Scale bar: 20  $\mu$ m.

Deposited material. Holotype deposited at the Royal Museum for Central Africa, Tervuren, Belgium (RMCA\_VERMES\_43660), paratypes deposited at the MRAC (number RMCA\_VERMES\_43661), the MnHn, Paris, France (MNHN HEL1824) and the Iziko South African Museum, Cape Town, Republic of South Africa (SAMC) (SAMC-A094638).

Description. Length 681 (522–965; 72); greatest width 200 (140–273; 72); pharynx 71 (49–97; 61); Dorsal anchor: a = 82 (65–94; 78), b = 66 (53–76; 78), c = 9 (3–17; 78), d = 21 (13–30; 78), e = 19 (13–22; 78), no visible filaments. Dorsal bar x = 87 (62–112; 72), w = 15 (9–23; 71), median projection posteriorly oriented: Y = 59 (33–82; 61). Ventral anchor slightly drilled at the blade beginning: a = 65 (38–74; 78), b = 71 (60–79; 78), c = 11 (5–16; 78), d = 18 (13–24; 78), e = 6 (3–9; 77), no visible filaments. Ventral bar x = 112 (76–146; 75), w = 16 (9–27; 74) extends in the form of an outgrowth, BL = 11 (5–20; 60), Bl = 6 (3–13; 60), median projection posteriorly orientated, cross-shaped, Cx = 72

(58–91; 77), Cy = 20 (14–29, 76). At median projection posterior extremity is attached another sclerotized piece trapeze-shaped. Fourteen hooks arranged in seven symmetrical pairs of different sizes: I (medio-ventral) the largest and longest: 52 (34–64; 77), II (medio-ventral) the smallest hooks: 17 (13–20; 69), III and IV (latero-dorsal and almost identical in size): 39 (27–48; 74) V to VII (latero-ventral and almost identical in size) 25 (17–35; 72). A medium-ventral trapezoidal plate, slightly sclerotized, is located between hooks I, L: 37 (28–50; 15), l: 28 (22–35; 16). Male copulatory organ (MCO): 61 (51–67; 71) with a well-developed basal bulb: AL = 15 (10–22; 41), Al = 10 (3–20; 41), followed by a thick-walled tube of constant diameter, folded at 30° at the middle, distal half surrounded by a membrane; at the distal extremity of the tube (level of opening) a portion of the wall formed a triangular part tapering at its end, length a quarter of that of the tube. Lidded eggs 93 (83–110; 12) are ovoid, at the pole opposite to the operculum is a filament finished by a small



disc, exactly as described by Euzet and Le Brun (1990) in the diagnose of *Bagrobdella*.

**Etymology.** The species is named after Professor Dr. Maarten P.M. Vanhove (University of Hasselt, Belgium), who is a specialist in monogeneans of cichlids from Lake Tanganyika.

**Note.** The authors of the new taxa are different from the authors of this paper: Article 50.1 and Recommendation 50A of the International Code of Zoological Nomenclature.

**Remarks.** The new species was placed in *Bagrobdella* due to the presence of a haptor with dorsal, ventral anchor/bar complexes, 7 pairs of hooks with ancyrocephaline distribution, pairs 1, 3–7 with shanks comprised of 2 subunits, proximal subunit expended, pair 2 with shank of 1 subunit. Ventral bar straight, with long anterior projection associated with lightly sclerotized skirt, dorsal bar straight, with posterior shield-like projection, which are characteristics of the genus (Kritsky and Kulo 1999). *Bagrobdella vanhovei* sp. nov. is similar to *B. auchenoglanii*, *B. fraudulentula*, *B. parauchenoglanii* and *B. anthopenis* by (1) having a trapezoidal-shaped (former visible in 15 of the 78 studied specimens) piece associated with the median projection of the ventral bar (Figs 9–14), (2) having seven pairs of hooks of different sizes. Its dorsal anchors have a long point, while its ventral anchors have a very short one, like in *Bagrobdella auchenoglanii* and *B. fraudulentula* (*B. parauchenoglanii* and *B. anthopenis* having points of the same size for both ventral and dorsal anchors). *Bagrobdella vanhovei* sp. nov. is easily distinguished from all species already described by the morphology of its MCO which is unique, being not spirally coiled – when all other species have a coiled MCO, which was a genus character (Kritsky and Kulo 1999), and more, the MCO of *B. vanhovei* has a sub-terminal opening (at three quarter of the total length), when for all other species the opening is terminal (Figs 15–20).

*Bagrobdella vanhovei* sp. nov. has two small hard parts that have never been reported before in the description of *Bagrobdella* species. These are: 1) a structure in the shape of a button between the bar and ventral anchors (Fig. 26), 2) a semi-circular structure topping the extremity of the ventral bar median projection (Fig. 25).

### *Bagrobdella vansteenbergei* Mushagalusa Mulega & Pariselle, sp. nov.

Fig. 27

<https://zoobank.org/47A4EA89-ED69-4878-BFD7-A3F8FC11CA6E>

Type-host. *Auchenoglanis occidentalis* (Valenciennes, 1840).  
Site of infection. gills.

Type locality. Mouth of Mutambala River (DRC)  
29°04.4042'E, 04°16.4598'S.

Studied materiel. 15 specimens mounted in Hoyer's medium.

Number of hosts examined. 11.

Prevalence. 1/11 = 9%.

Mean intensity. 17/1 = 17.

Abundance. 17/11 = 1.5.

Type-material. Holotype deposited at the Royal Museum for Central Africa, Tervuren, Belgium (RMCA\_VERMES\_43658),

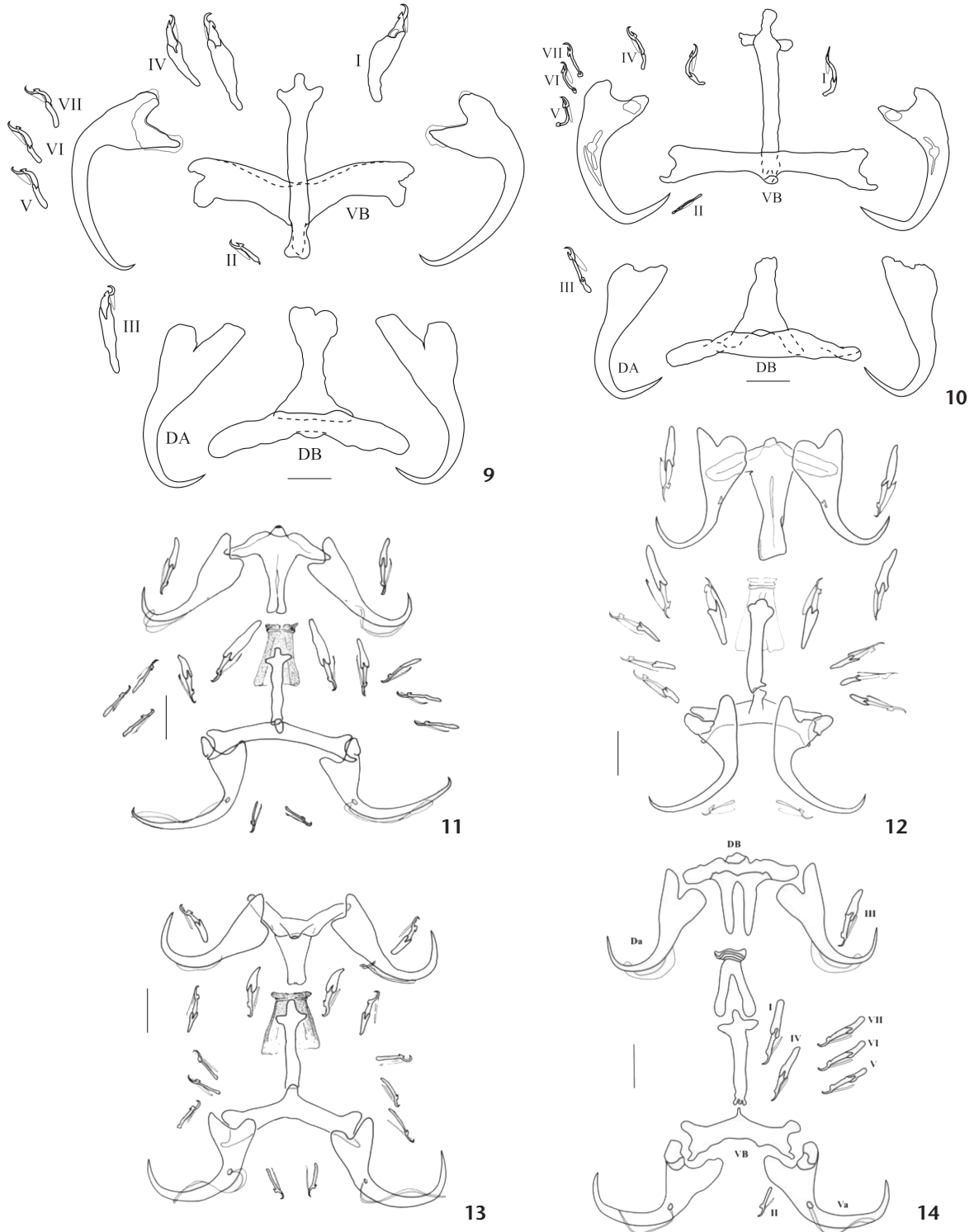
paratypes deposited at the MRAC (number RMCA\_VERMES\_43659), the MnHn, Paris, France (MNHN HEL1825) and the Iziko South African Museum, Cape Town, Republic of South Africa (SAMC) (SAMC-A094636 and SAMC-A094637).

**Description.** The anatomy is that of *Bagrobdella*. Total length 621 (543–749, 12), greatest width 182 (113–262; 13); pharynx 64 (42–79; 10). Dorsal anchor a = 71 (67–77; 13), b = 64 (59–70; 13), c = 1 (0–5; 13), d = 10 (7–13; 13), e = 23 (21–26; 13). Dorsal bar x = 88 (77–100; 10), w = 14 (10–18; 10), median projection posteriorly oriented: Y = 55 (51–70; 6). Ventral anchor slightly drilled at the blade proximal extremity: a = 63 (61–67; 13), b = 62 (60–64; 12), c = 6 (4–8; 12), d = 12 (9–17; 12), e = 26 (22–28; 13). Ventral bar: 92 (78–103; 10), w = 14 (11–18; 8), extends in the form of an outgrowth: BL = 7 (5–11; 7), Bl = 5 (5–6; 8). This bar has a median projection posteriorly cross-chapped cx = 77 (69–85; 12), cy = 25 (21–31; 12), absence of sclerotized trapeze-shaped. Hook pairs of similar size: I = 26 (23–31; 11), II = 17 (14–19; 10), III and IV = 22 (19–27; 10), and V up to VII = 19 (18–22; 12). MCO 66 (58–71; 11), asymmetrical bulb AL = 16 (11–20; 9), Al = 9 (5–12; 9), is a curved tube with thick wall and constant diameter; a part of the wall extend the penis extremity of about 25%.

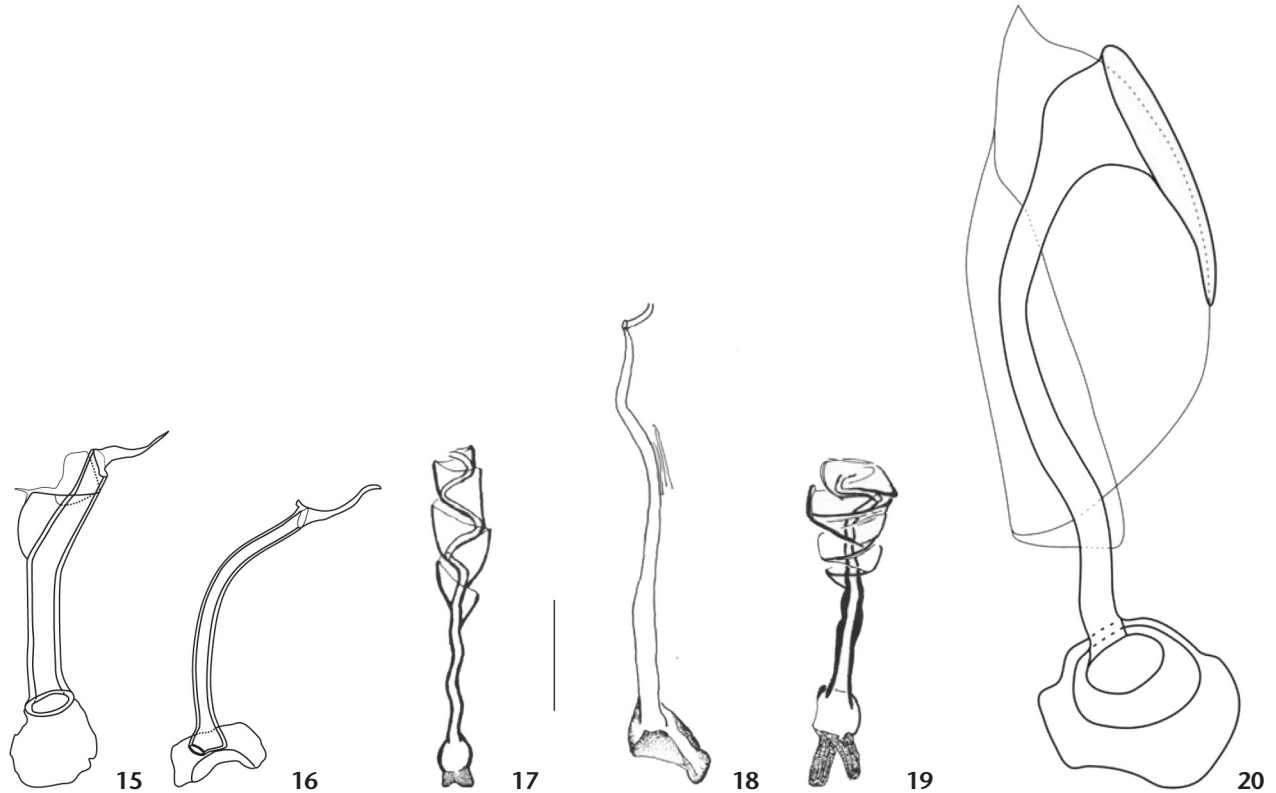
**Etymology.** The species is named after Dr. Maarten Van Steenberge, a researcher at Royal Belgian Institute of Natural Sciences, who is a specialist in African freshwater fish.

**Note:** The authors of the new taxa are different from the authors of this paper: Article 50.1 and Recommendation 50A of the International Code of Zoological Nomenclature.

**Remarks.** The new species was placed in *Bagrobdella* due to the presence of haptor with dorsal, ventral anchor/bar complexes, 7 pairs of hooks, pairs 1, 3–7 with shanks comprised of 2 subunits, proximal subunit expended, pair 2 with shank of 1 subunit. Ventral bar straight, with long anterior projection, dorsal bar straight, with posterior shield-like projection, which are characteristics of the genus (Kritsky and Kulo 1999). *Bagrobdella vansteenbergei* sp. nov. differs from all other species already described by the size of its hooks, which are all of almost the same length (pair I being only slightly longer than the others), whereas they are of different size in all the previously described species (including *B. vanhovei* sp. nov.) (Figs 9–14). Moreover, the trapezoidal piece was not observed in the 17 individuals (15 Hoyer's mounted and 2 preserved in ethanol), and the ventral anchors are slightly holed. Its male copulating organ is unique and different from the MCO of *B. auchenoglanii*, *B. fraudulentula*, *B. anthopenis* and *B. parauchenoglanii* by a shape which is not spirally coiled. As *B. vanhovei*, the MCO of *B. vansteenbergei* has a sub-terminal opening at three quarter of the total length. As *Bagrobdella vanhovei* sp. nov., *Bagrobdella vansteenbergei* sp. nov. has two small hard parts that have never been reported before in the description of *Bagrobdella* species. These are: 1) a structure in the shape of a button between the bar and ventral anchors (Fig. 26), 2) a semi-circular structure topping the extremity of the ventral bar median projection (Fig. 25).



Figures 9–14. Haptors of the six species belonging to *Bagrobdella*: (9) *Bagrobdella vanhovei* sp. nov.; (10) *Bagrobdella vansteenbergei* sp. nov.; (11) *Bagrobdella auchenoglani*; (12) *Bagrobdella fraudulenta*; (13) *Bagrobdella anthopenis*; (14) *Bagrobdella parauchenoglani* (Akoumba et al 2017, Euzet and Le Brun 1990). Scale bars: 20  $\mu$ m.



Figures 15–20. MCO of the six species belonging to *Bagrobdella*: (15) *Bagrobdella vanhovei* sp. nov.; (16) *Bagrobdella vansteenbergei* sp. nov.; (17) *Bagrobdella auchenoglanii*; (18) *Bagrobdella fraudulenta*; (19) *Bagrobdella anthopenis*; (20) *Bagrobdella parauchenoglanii* (Akoumba et al. 2017, Euzet and Le Brun 1990). Scale bar: 20  $\mu$ m.

#### Multivariate analyses

Our dataset contained 68 individuals with 21 quantitative variables (Figs 2–7). Among the 68 individuals, three were considered as illustrative (*B. auchenoglanii*, *B. fraudulenta* and *B. anthopenis*). The first two dimensions of the PCA represent 71.8% of the total dataset inertia. Individuals are clustered into three groups which correspond to the three species included in the analysis (*Bagrobdella vanhovei* sp. nov., *B. vansteenbergei* sp. nov., and *Bagrobdella parauchenoglanii*). Only parameters contributing to more than 95 percent for group separation were displayed on the graph (Fig. 28). The dimension 1 opposes most individuals belonging to the group *B. vanhovei* sp. nov. (to the right of the graph, characterized by a positive coordinate on the axis) to individuals belonging to the groups *B. vansteenbergei* and *B. parauchenoglanii* (from Cameroon), to the left of the graph, characterized by a strongly negative coordinate on the axis).

The individuals belonging to the group *B. vanhovei* sp. nov. (characterized by a positive coordinate on the axis) are sharing:

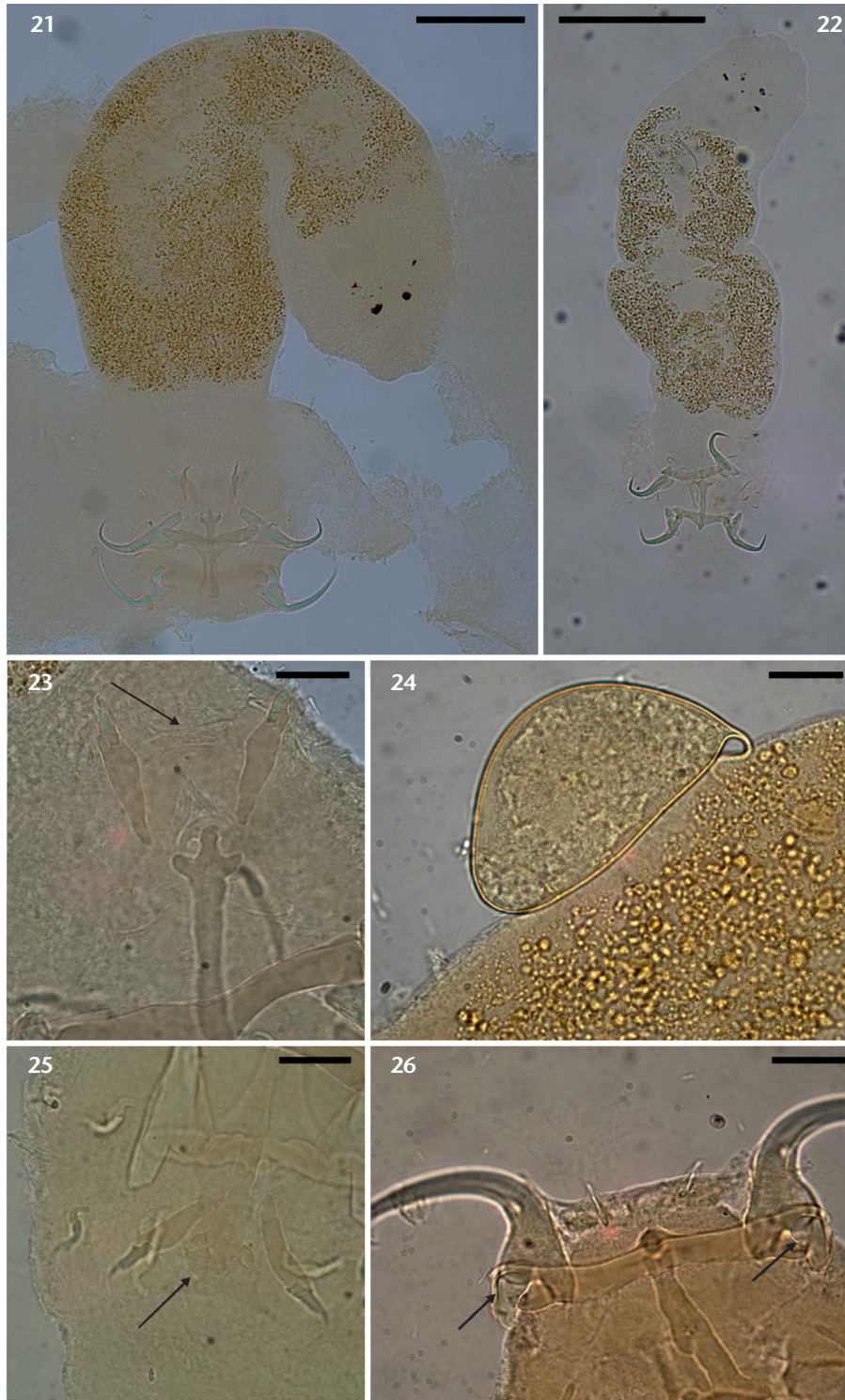
1) high values for III\_IV, DA\_d, DB\_w, I, VA\_b, DA\_a, VB\_x, VA\_a, VA\_d and DA\_b (variables are sorted from the strongest); 2) low values for VA\_e and Pe (variables are sorted from the weakest).

The individuals belonging to *B. parauchenoglanii* (characterized by a negative coordinate on the axis) are sharing: 1) high values for the variables Pe, VA\_c, DA\_c and VB\_w (variables are sorted from the strongest); 2) low values for the variables DA\_b, DB\_x, VB\_x, cx, VA\_a, DA\_a, VA\_b, DA\_e, III\_IV and DA\_d (variables are sorted from the weakest).

In the group of *B. vansteenbergei* sp. nov. (characterized by a negative coordinate on the axis) individuals share: 1) high values for the variables VA\_e and DA\_e (variables are sorted from the strongest); 2) low values for the variables V\_à\_VII, DA\_c, VA\_c, IDB\_w, DA\_d, DV\_d, VB\_w and III\_IV (variables are sorted from the weakest).

The dimension 2 opposes individuals belonging to *B. parauchenoglanii* (to the top of the graph, characterized by a strongly positive coordinate on the axis) to individuals belonging to *B. vansteenbergei* sp. nov.

On the graph, *B. auchenoglanii* and *B. anthopenis* are isolated from the other species, while *B. fraudulenta* grouped with *B. parauchenoglanii*, even so these two latter species being easily distinguishable (at least by their penis morphology) (Figs 15–20).



Figures 21–26. (21) *Bagrobdella vanhovei* sp. nov. microphotograph in toto; (22) *Bagrobdella vansteenbergei* sp. nov. microphotograph in toto; (23) Microphotograph of the trapezoidal plate in the haptor of *Bagrobdella vanhovei*; (24) Button like structure; (25) Semi-circular structure; (26) Egg (*B. vanhovei* sp. nov). Scale bars: 21 = 100  $\mu$ m, 22 = 200  $\mu$ m, 23, 24, 26 = 20  $\mu$ m, 25 = 50  $\mu$ m.



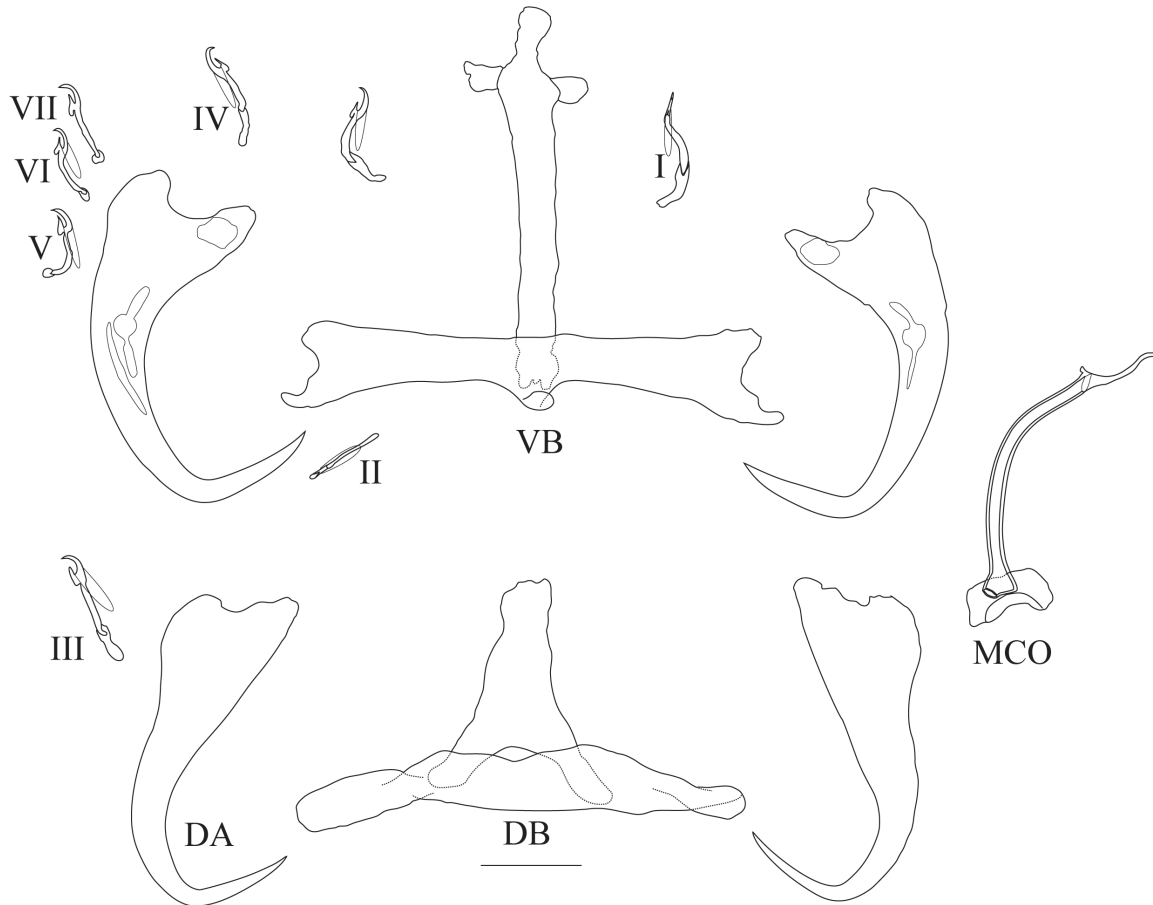


Figure 27. *Bagrobdella vansteenbergei* sp. nov., haptoral structure and MCO. Scale bar: 20  $\mu$ m.

## DISCUSSION

The non-homogeneous distribution in populations of parasite observed in our fish samples is very common (Dold and Holland 2011), for example it has been observed very recently in the *Brachyplatystoma vaillantii* Valenciennes, 1840 (Siluriformes, Pimelodidae) in the Amazon (Brito-Junior and Tavares-Dias 2021). As mentioned by Tinsley et al. (2020) the factors responsible for the aggregated distribution of a monogenean species on fish are likely linked to the host factors alone, instead of the heterogeneity in host exposition to parasite infestation stages.

As there is sometimes a correlation between water quality and helminth infections – e.g., in the Cyprinid fish Zargar et al. (2012), overdispersion of *B. vanhovei* sp. nov. and the absence of *B. vansteenbergei* sp. nov. in the other six host individuals captured off the Orthodox Church of Uvira could be due to different water qualities at the level of these two sampling sites. Thus, *B. vansteenbergei* sp. nov. could be adapted to the conditions found at the Mouth of Mutambala River, while *B. vanhovei* sp. nov. could be more resistant to variations of abiotic conditions.

*Bagrobdella vanhovei* sp. nov. and *B. vansteenbergei* sp. nov. are both new to science and endemic to Lake Tanganyika. However, the four species of *Bagrobdella* already known have been described in different localities: *B. auchenoglanii* in Ghana (with a redescription based on individuals sampled in Mali and Togo), *B. anthopenis* in Mali, *B. fraudulentata* in Uganda and Mali (see Euzet and Le Brun 1990) and recently *B. parauchenoglanii* in Cameroon (Akoumba et al. 2017).

Except for individuals of *A. occidentalis* sampled by Euzet and Le Brun at Bamako (in Niger River), which harbor three species of *Bagrobdella* (*B. auchenoglanii*, *B. fraudulentata* and *B. anthopenis*), in other localities: Lake Albert, Uganda (Paperna 1971); Kara River, Togo (Kritsky and Kulo 1999); Oti River (Euzet and Le Brun 1990) and Volta Lake (Paperna 1969), Volta Basin; Sassandra in RCI (Euzet and Le Brun 1990), and on *P. monkei* in Cameroon (Akoumba et al. 2017), it seems that only one species is present (*B. fraudulentata* in Uganda, *B. parauchenoglanii* in Cameroon, *B. auchenoglanii* in the other localities).

So, among the five *Bagrobdella* species described from *A. occidentalis*, three (*B. auchenoglanii*, *B. fraudulentata* and *B. antho-*



Figure 28. PCA-Biplot of species belonging to *Bagrobdella*.

*penis*) are found in the watershed of the Nilo-Sudanian province, when the two others new one (*B. vanhovei* and *B. vansteenbergei*) are from the Tanganyika province. As a consequence, either these monogenean species are specific of their ichthyofaunal provinces, or we are in the presence of two different host species (the systematic status of *A. occidentalis* remains under debate – see for example Geerinckx and Vreven (2013)).

*Bagrobdella vanhovei* sp. nov. shows a high variability in its morphometrical characters (Fig. 28), with small, medium and large measurements for similar hard parts and this causes individuals of this species to oppose on the two axes of the PCA. These differences, apart from a great variability of specimens from a single species, may likely be due to two reasons: 1) presence of different species, 2) the use of different medium to prepare the slides (see Fankoua et al. 2017). Knowing that we did not see morphological differences between “large”

and “small” specimens, and that both were found together on same slides (in the same medium), we are most probably in the presence of a species with a great variability in the size of its haptoral hard parts.

Considering that the two new species have a non-spirally coiled MCO, the *Bagrobdella* diagnosis should be amended, in fact the more recent given by Kritsky and Kulo (1999) indicate that “Copulatory complex a coiled tube with clockwise rings”.

The research on new species of Monogenea from Siluriformes is ongoing in the Lake Tanganyika.

## LITERATURE CITED

Anderson LE (1954) Hoyer's solution as a rapid permanent mounting medium for bryophytes. *The Bryologist* 57(3): 242–244. <https://doi.org/10.2307/3240091>

- Akoumba JF, Pariselle A, Tombi J, Bilong Bilong CF (2017) Description of two new ancyrocephalid (*Quadriacanthus* and *Bagrobdella*) monogenea from the gills of auchenoglanid catfishes (Pisces, Siluriformes, Claroteidae) in Cameroon. *Vie et Milieu, Life and Environment* 67(2): 59–64.
- Albrecht C, Wilke T (2008) Ancient Lake Ohrid: Biodiversity and evolution. *Hydrobiologia* 615(1): 103–140. <https://doi.org/10.1007/s10750-008-9558-y>
- Aljanabi SM, Martinez I (1997) Universal and rapid salt-extraction of high-quality genomic DNA for PCR-based techniques. *Nucleic Acids Research* 25: 4692–4693. <https://doi.org/10.1093/nar/25.22.4692>
- Bates JW (1997) The Slide-Sealing Compound “Glyceel”. *Journal of Nematology* 29(4): 565–566.
- Brito-Junior IA, Tavares-dias M (2021) Diversity of ectoparasites and endoparasites infecting *Brachyplatystoma vaillantii* (Siluriformes: Pimelodidae), a large migratory catfish from the Amazon. *Acta Amazonica* 51(2): 122–128. <https://doi.org/10.1590/1809-4392201901321>
- Cohen AS, Bills R, Cocquyt CZ, Caljon AG (1993) The impact of sediment pollution on biodiversity in Lake Tanganyika. *Conservation Biology* 7(3): 667–677. <https://doi.org/10.1046/j.1523-1739.1993.07030667.x>
- Coulter GW, Allanson BR, Bruton MN, Greenwood PH, Hart RC, Jackson PBN, Ribbink AJ (1986) Unique qualities and special problems of the African Great Lakes. *Environmental Biology of Fishes* 17(3): 161–183. <https://doi.org/10.1007/BF00002094>
- Cristescu ME, Adamowicz SJ, Vaillant JJ, Haffner DG (2010) Ancient lakes revisited: From the ecology to the genetics of speciation. *Molecular Ecology* 19(22): 4837–4851. <https://doi.org/10.1111/j.1365-294X.2010.04832.x>
- De Keyzer ELR, De Corte Z, Van Steenberge M, Raeymaekers JAM, Calboli FCF, Kmentová N, N’Sibula Mulimbwa T, Virgili M, Vangestel C, Masilya MP, Volckaert FAM, Vanhove MPM (2019) First genomic study on Lake Tanganyika sprat *Stolothrissa tanganyicae*: A lack of population structure calls for integrated management of this important fisheries target species. *BMC Evolutionary Biology* 19(1): 1–15. <https://doi.org/10.1186/s12862-018-1325-8>
- Dold C, Holland CV (2011) *Ascaris* and ascariasis. *Microbes and Infection* 13(7): 632–637. <https://doi.org/10.1016/j.micinf.2010.09.012>
- Euzet L, Le Brun N (1990) Monogènes du genre *Bagrobdella* Paperna, 1969 parasites branchiaux d’*Auchenoglanis occidentalis* Cuvier et Valenciennes, 1840) (Teleostei, Siluriformes, Bagridae). *Journal of African Zoology* 104: 37–48.
- Fankoua SO, Bitja Nyom AR, Bahanak Dnd, Bilong Bilong CF, Pariselle A (2017) Influence of preservative and mounting media on the size and shape of monogenean sclerites. *Parasitology Research* 116: 2277–2281. <https://doi.org/10.1007/s00436-017-5534-7>
- Fermon Y (2007) Étude de l’état des lieux de la partie nord du lac Tanganyika dans le cadre du Programme Pêche d’Action Contre la Faim en République Démocratique du Congo. Action Against Hunger, USA, report, 88 pp.
- Fermon Y, Nshombo Muderhwa V, Muzumani Risasi D, Jonas B (2012) Lac Tanganyika Guide de la faune des poissons de la côte congolaise, d’Ubwari à la Ruzizi. Amira, 238 pp.
- Geerinckx T, Vreven E (2013) A re-evaluation of the species-level diversity within the catfish genus *Auchenoglanis* (Siluriformes: Claroteidae). *Journal of Natural History* 47(47–48): 2979–3010. <https://doi.org/10.1080/00222933.2013.802043>
- Grégoir AF, Hablützel PI, Vanhove MPM, Pariselle A, Bamps J, Volckaert FAM, Raeymaekers JAM (2015) A link between host dispersal and parasite diversity in two sympatric cichlids of Lake Tanganyika. *Freshwater Biology* 60(2): 323–335. <https://doi.org/10.1111/fwb.12492>
- Husson F, Josse J, Le S, Maze J (2020) FactoMiner: Multivariate exploratory data analysis and data mining. R package version 2.6.
- Kassambara A, Mundt F (2020) Factoextra: extract and visualize the results of multivariate data analyses. R package version 1.0.7.
- Kmentová N, Koblmüller S, Van Steenberge M, Raeymaekers JAM, Artois T, De Keyzer ELR, Milec L, Muterezi-Bukinga F, Mulimbwa N’sibula T, Masilya Mulungula P, Ntakimazi G, Volckaert FAM, Gelnar M, Vanhove MPM (2020) Weak population structure and recent demographic expansion of the monogenean parasite *Kapentagyryus* spp. infecting clupeid fishes of Lake Tanganyika, East Africa. *International Journal for Parasitology* 50(6–7): 471–486. <https://doi.org/10.1016/j.ijpara.2020.02.002>
- Kmentová N, Van Steenberge M, Raeymaekers JAM, Koblmüller S, Hablützel PI, Muterezi Bukinga F, Mulimbwa N’sibula T, Masilya MP, Nzigidahera B, Ntakimazi G, Gelnar M, Vanhove MPM (2018) Monogenean parasites of sardines in Lake Tanganyika: Diversity, origin and intraspecific variability. *Contributions to Zoology* 87(2): 105–132. <https://doi.org/10.1163/18759866-08702004>
- Kritsky DC, Kulo SD (1999) Revisions of *Protoancylo-discoides* and *Bagrobdella*, with redescrptions of *P. chrysiichthes* and *B. auchenoglanii* (Monogenoidea: Dactylogyridae) from the gills of two bagrid catfishes (Siluriformes) in Togo, Africa. *Comparative Parasitology* 66(2): 138–145.
- Langenberg VT, Nyamushahu S, Roijackers R, Koelmans AA (2003) External nutrient sources for Lake Tanganyika. *Journal of Great Lakes Research* 29(Suppl. 2): 169–180. [https://doi.org/10.1016/S0380-1330\(03\)70546-2](https://doi.org/10.1016/S0380-1330(03)70546-2)
- Martens K (1997) Speciation in ancient lakes. *Trends in Ecology and Evolution* 12(5): 177–182. [https://doi.org/10.1016/S0169-5347\(97\)01039-2](https://doi.org/10.1016/S0169-5347(97)01039-2)
- Nishida M (1991) Lake Tanganyika as an evolutionary reservoir of old lineages of East African cichlid fishes: Inferences from allozyme data. *Experientia* 47(9): 974–979. <https://doi.org/10.1007/BF01929896>

- Paperna I (1969) Monogenetic Trematodes of the fish of the Volta basin and South Ghana. *Bulletin de l'Institut Francais d'Afrique Noire, Série A* 31: 840–880.
- Paperna I (1971) Redescription of *Bagrobdella auchenoglanii* Paperna, 1969 (Monogenea, Dactylogyridae). *Revue de Zoologie et de Botanique Africaine* 83: 141–146.
- Pariselle A, Boeger WA, Snoeks J, Bilong Bilong CF, Morand S, Vanhove MPM (2011) The monogenean parasite fauna of cichlids: a potential tool for host biogeography. *International Journal of Evolutionary Biology* 2011: 471480. <https://doi.org/10.4061/2011/471480>
- Pariselle A, Van Steenberge M, Snoeks J, Volckaert FAM, Huyse T, Vanhove MPM (2015) Ancyrocephalidae (Monogenea) of lake tanganyika: Does the *Cichlidogyrus* parasite fauna of *Interochromis loocki* (Teleostei, Cichlidae) reflect its host's phylogenetic affinities? *Contributions to Zoology* 84(1): 25–38. <https://doi.org/10.1163/18759866-08401003>
- Pearl CR, Bills R, Wilkinson M, Day JJ (2014) Nocturnal claroteine catfishes reveal dual colonisation but a single radiation in Lake Tanganyika. *Molecular Phylogenetics and Evolution* 73(1): 119–128. <https://doi.org/10.1016/j.ympev.2014.01.013>
- R Core Team (2022) R: A language and environment for statistical computing. R Foundation for Statistical Computing, Vienna. <http://www.R-project.org>
- Rahmouni C (2021) Species diversity and phylogenetic relationships among gill-specific monogenean parasites (Platyhelminthes: Dactylogyridae) of cichlids (Cichlidae) from Lake Tanganyika. PhD Thesis, Masaryk University, Brno, Czech Republic.
- Rahmouni C, Vanhove MPM, Šimková A (2017) Underexplored diversity of gill monogeneans in cichlids from Lake Tanganyika: eight new species of *Cichlidogyrus* Paperna, 1960 (Monogenea: Dactylogyridae) from the northern basin of the lake, with remarks on the vagina and the heel of the male copulatory organ. *Parasites & Vectors* 10: 591. <https://doi.org/10.1186/s13071-017-2460-6>
- Rahmouni C, Vanhove MPM, Šimková A (2018) Seven new species of *Cichlidogyrus* Paperna, 1960 (Monogenea: Dactylogyridae) parasitizing the gills of Congolese cichlids from northern Lake Tanganyika. *PeerJ* 6: e5604. <https://doi.org/10.7717/peerj.5604>
- Raeymaekers JAM, Hablützel PI, Grégoir AF, Bamps J, Roose AK, Vanhove MPM, Van Steenberge M, Pariselle A, Huyse T, Snoeks J (2013) Contrasting parasite communities among allopatric colour morphs of the Lake Tanganyika cichlid *Tropheus*. *BMC Evolutionary Biology* 13: 41. <https://doi.org/10.1186/1471-2148-13-41>
- Ronco F, Büscher HH, Indermaur A, Salzburger W (2020) The taxonomic diversity of the cichlid fish fauna of ancient Lake Tanganyika, East Africa. *Journal of Great Lakes Research* 46(5): 1067–1078. <https://doi.org/10.1016/j.jglr.2019.05.009>
- Ronco F, Matschiner M, Böhne A, Boila A, Büscher HH, El Taher A, Indermaur A, Malinsky M, Ricci V, Kahmen A, Jentoft S, Salzburger W (2021) Drivers and dynamics of a massive adaptive radiation in cichlid fishes. *Nature* 589(7840): 76–81. <https://doi.org/10.1038/s41586-020-2930-4>
- Salzburger W, Bocxlaer BV, Cohen AS (2014) Ecology and evolution of the African great lakes and their faunas. *Annual Review of Ecology, Evolution, and Systematics* 45: 519–545. <https://doi.org/10.1146/annurev-ecolsys-120213-091804>
- Salzburger W, Mack T, Verheyen E, Meyer A (2005) Out of Tanganyika: Genesis, explosive speciation, key-innovations and phylogeography of the haplochromine cichlid fishes. *BMC Evolutionary Biology* 5(1983): 1–15. <https://doi.org/10.1186/1471-2148-5-17>
- Salzburger W, Meyer A, Baric S, Verheyen E, Sturmbauer C (2002) Phylogeny of the Lake Tanganyika cichlid species flock and its relationship to the Central and East African haplochromine cichlid fish faunas. *Systematic Biology* 51(1): 113–135. <https://doi.org/10.1080/106351502753475907>
- Tinsley RC, Vineer HR, Grainger-Wood R, Morgan ER (2020) Heterogeneity in helminth infections: factors influencing aggregation in a simple host-parasite system. *Parasitology* 147: 65–77.
- Van Steenberge M, Pariselle A, Huyse T, Volckaert FAM, Snoeks J, Vanhove MPM (2015) Morphology, molecules, and monogenean parasites: An example of an integrative approach to cichlid biodiversity. *Plos One* 10(4): e0124474. <https://doi.org/10.1371/journal.pone.0124474>
- Vanhove MPM, Hablützel PI, Pariselle A, Šimková A, Huyse T, Raeymaekers JAM (2016) Cichlids: A host of opportunities for evolutionary parasitology. *Trends in Parasitology* 32(10): 820–832. <https://doi.org/10.1016/j.pt.2016.07.002>
- Vanhove MPM, Pariselle A, Van Steenberge M, Raeymaekers JAM, Hablützel PI, Gillardin C, Hellemans B, Breman FC, Koblmüller S, Sturmbauer C, Snoeks J, Volckaert FAM, Huyse T (2015) Hidden biodiversity in an ancient lake: Phylogenetic congruence between Lake Tanganyika trophic cichlids and their monogenean flatworm parasites. *Scientific Reports* 5: 13669. <https://doi.org/10.1038/srep13669>
- Vanhove MPM, Van Steenberge M, Dessein S, Volckaert FAM, Snoeks J, Huyse T, Pariselle A (2013) Biogeographical implications of Zambesian *Cichlidogyrus* species (Platyhelminthes: Monogenea: Ancyrocephalidae) parasitizing Congolian cichlids. *Zootaxa* 3608(5): 398–400. <https://doi.org/10.11646/zootaxa.3608.5.8>
- Vanhove MPM, Volckaert FAM, Pariselle A (2011) Ancyrocephalidae (Monogenea) of lake tanganyika: I: Four new species of *Cichlidogyrus* from *Ophthalmotilapia ventralis* (Teleostei: Cichlidae), the first record of this parasite family in the basin. *Zoologia (Curitiba)* 28(2): 253–263. <https://doi.org/10.1590/S1984-46702011000200016>
- Zargar UR, Yousuf AR, Chishti MZ, Ahmed F, Bashir H, Ahmed F (2012) Effects of water quality and trophic status on



helminth infections in the cyprinid fish, *Schizothorax niger* Heckel, 1838 from three lakes in the Kashmir Himalayas. *Journal of Helminthology* 86(1): 70–76. <https://doi.org/10.1017/S0022149X11000071>

---

Submitted: March 24, 2022

Accepted: July 14, 2022

Editorial responsibility: Walter A.P. Boeger

---

#### Author Contributions

AMM and AP designed and supervised this study. FMB and PMM contributed to sampling, the collection and identification of fish, and provided scientific background information on the fish. JFA provide raw data on *Bagrobdella parauchenoglanii*. AMM and AP

analysed the data and wrote the paper.

#### Competing Interests

The authors have declared that no competing interests exist.

#### How to cite this article

Mushagalusa Mulega A, Muterezi Bukinga F, Akoumba JF, Masilya MP, Pariselle A (2022) Monogeneans from Catfishes in Lake Tanganyika. I: Two new species of *Bagrobdella* (Dactylogyridae) from *Auchenoglanis occidentalis* (Siluriformes: Claroteidae). *Zoologia* (Curitiba) 39: e22016. <https://doi.org/10.1590/S1984-4689.v39.e22016>

#### Published by

Sociedade Brasileira de Zoologia at Scientific Electronic Library Online (<https://www.scielo.br/zool>)

#### Copyright

© 2022 The Authors.