

Supplementary material to: Screening of *BRCA1* variants c.190T>C, 1307delT, g.5331G>A and c.2612C>T in breast cancer patients from North India

***BRCA1* c.190T>C (p.Cys64Arg)**

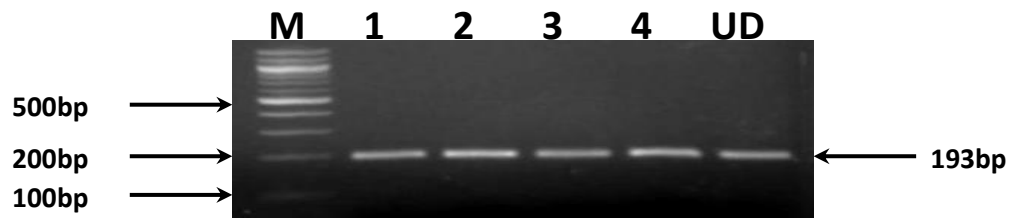


Figure S1 - A photograph of 2.5% agarose gel stained with ethidium bromide showing restriction digestion products. M represents 100 bp Molecular Weight Marker; Lane 1-4 TT genotype; UD Undigested Product.