

Supplementary material to: Screening of *BRCA1* variants c.190T>C, 1307delT, g.5331G>A and c.2612C>T in breast cancer patients from North India

***BRCA1* c.2612 C>T (p.Pro871Leu)**

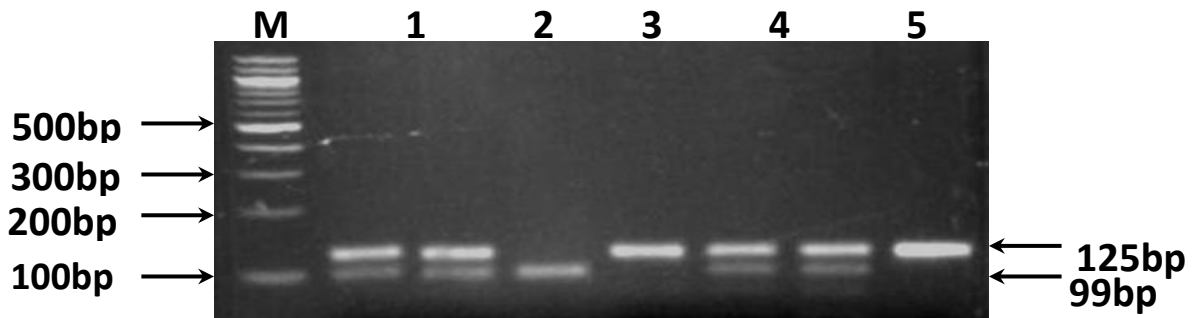


Figure S4- A photograph of 2.5% agarose gel stained with ethidium bromide showing restriction digestion products. M represents 100 bp Molecular Weight Marker; Lane 3 CC genotype; Lane 1, 2, 5, 6 CT genotype; Lane 4 TT genotype; UD Undigested Product. Band of 26 bp is not visible on the gel picture.