



DOI: <http://dx.doi.org/10.1590/1807-1929/agriambi.v23n10p733-740>

Evapotranspiration and water sensitivity of Amazonian yellow ipe seedlings under different shading conditions

Josiane F. Keffer¹, Cátia C. da Silva¹, Adilson P. de Souza², Andréa C. da Silva²,
Luana Bouvié² & Thaíse K. R. Dias¹

¹ Universidade Federal de Mato Grosso/Institute of Humanities, Natural and Social Sciences. Sinop, MT, Brasil. E-mail: kefferjf@gmail.com - ORCID: 0000-0001-6134-7372; catiasilvaforestal@gmail.com - ORCID: 0000-0002-1079-8728; thaiserdias@yahoo.com.br - ORCID: 0000-0001-7047-8550

² Universidade Federal de Mato Grosso/Institute of Agricultural and Environmental Sciences. Sinop, MT, Brasil. E-mail: pachecoufnt@gmail.com (Corresponding author) - ORCID: 0000-0003-4076-1093; andcar1007@gmail.com - ORCID: 0000-0003-2921-3379; bouvieluana@gmail.com - ORCID: 0000-0003-1884-934

ABSTRACT: The scarcity of information on the agroclimatic and ecophysiological requirements of forest species, especially in the initial phase, limits the production of quality seedlings, the planning and optimization of nurseries. The potential evapotranspiration, crop coefficients (kc) and water sensitivity coefficients (ky) of Amazonian yellow ipe seedlings were determined under different shading conditions and levels of water replacement to the substrate, in the dry period (July to October 2016), in the Cerrado-Amazon Rainforest transition region of the Mato Grosso state, Brazil. The experiment evaluated the full sun and black polyester nets with 35, 50, 65 and 80% shading, and the levels of water replacement to the substrate of 25, 50, 75 and 100% ETc in a split-plot scheme, with irrigation fractions established according to the maximum water retention capacity of the substrate. The water consumption of Amazonian yellow ipe was 239.2, 228.6, 204.1, 185.7 and 136.3 mm for cultivation under full sun and shading levels of 35, 50, 65 and 80%, respectively. The daily means of ETc were 3.37, 3.22, 2.87, 2.61 and 1.92 mm d⁻¹, whereas the kc means were 1.13, 1.15, 1.05, 0.90 and 0.60 for the above-mentioned shading levels. ky values ranged from 0.89 to 1.28, with reduction due to the increase of water replacement and increase for higher shading percentage.

Key words: *Handroanthus serratifolius*, crop coefficients, water deficit, irrigation management

Evapotranspiração e sensibilidade hídrica de mudas de ipê-amarelo amazônico em diferentes condições de sombreamento

RESUMO: A falta de informações técnicas sobre as exigências agroclimáticas e ecofisiológicas de espécies florestais, principalmente na fase inicial, limitam a produção de mudas de qualidade, o planejamento e a otimização de viveiros. Determinou-se a evapotranspiração, coeficientes de cultivo (kc) e os fatores de sensibilidade hídrica (ky) de mudas de ipê-amarelo amazônico em diferentes condições de sombreamento e níveis de reposição de água no substrato, no período seco (julho a outubro de 2016), na região de transição Cerrado-Amazônia de Mato Grosso. O experimento avaliou os níveis de sombreamento em pleno sol e com telas poliefinas pretas de 35, 50, 65 e 80% de sombreamento, e os níveis de reposição hídrica no substrato de 25, 50, 75 e 100% da ETc, com fracionamentos de rega estabelecidos em função da capacidade máxima de retenção de água do substrato em esquema de parcelas subdivididas. O consumo de água do ipê-amarelo amazônico foi de 239,2; 228,6; 204,1; 185,7 e 136,3 mm para as condições de pleno sol e sombreamentos de 35, 50, 65 e 80%, respectivamente. A ETc média foi de 3,37; 3,22; 2,87; 2,61 e 1,92 mm d⁻¹, enquanto que os valores de kc foram 1,13; 1,15; 1,05; 0,90 e 0,60 para os níveis de sombreamento supracitados. Os valores de ky variaram de 0,89 a 1,28, com redução pelo aumento da reposição hídrica e aumento para maiores percentuais de sombreamento.

Palavras-chave: *Handroanthus serratifolius*, coeficientes de cultivo, déficit hídrico, manejo de irrigação



INTRODUCTION

The Amazonian yellow ipe [*Handroanthus serratifolius* (Vahl) S. O. Grose] is a forest species native to South America, classified as secondary and occurring in several Brazilian phytogeographic domains (Ferreira et al., 2004; Grose & Olmstead, 2007). It is widely planted in urban areas and with potential for use in reforestation and recovery of degraded areas (Fávero et al., 2008).

In forest nurseries, in the initial stage of seedling development, the availability of water and the intensity/quality of incident radiation stand out as limiting factors for plant growth and development, because, depending on their interactions, errors can occur in the dimensioning and/or water management, with reduction of potential yields of the species, establishment of diseases, increase in the consumption of nutrients, water and energy, reduction of the germination potential and homogeneity in seedling development (Oliveira & Perez, 2012; Monteiro et al., 2016).

Evapotranspiration allows defining the water requirement of a crop according to the interactions and dynamics of water movement in the soil (substrate)-plant-atmosphere system. Among the various concepts and forms of determination, crop evapotranspiration (ET_c) indicates a condition in which a vegetated surface can express its maximum productive potential (genetic), with no water, nutritional and phytosanitary constraints (Allen et al., 1998).

Defining the response factors of the crop to water deficit (ky) allows indicating in which period of the plant life cycle (phenological stage) there is greater sensitivity to water stress (Doorenbos & Kassam, 1979). Therefore, ky constitutes an important tool for rational water management in forest nurseries, because there are no changes in the phenological stages in the seedlings (only vegetative stage), thus allowing the optimization of water use according to the requirements of each species (Silva et al., 2014; Santos et al., 2017).

This study aimed to determine the evapotranspiration (ET_c), crop coefficients (kc) and water sensitivity factors (ky) of Amazonian yellow ipe seedlings, under different shading conditions, in the dry period of the Cerrado-Amazon Rainforest transition region of Mato Grosso state, Brazil.

MATERIAL AND METHODS

The experiment was conducted between June and October 2016, in the municipality of Sinop, MT, Brazil (11.85° S and 55.38° W and altitude of 371 m). According to Köppen's classification, the climate of the region is Aw (hot and humid tropical), with two well-defined seasons: rainy (October to April) and dry (May to September), with annual average precipitation and potential evapotranspiration of 1974.77 and 1327.29 mm, respectively, and monthly average temperatures between 23.2 and 25.8 °C (Souza et al., 2013).

The seeds of Amazonian yellow ipe [*Handroanthus serratifolius* (Vahl) S.O. Grose] were germinated in chambers with constant temperature of 30 °C and 12 h photoperiod, where they remained until the appearance of primary roots and

cotyledon leaves. Subsequently, the seedlings were kept for 25 days on polystyrene trays (124 cells), containing commercial substrate made of coconut fiber. Upon the emergence of the first pair of true leaves and root system establishment, the seedlings were transplanted to 290 cm³ tubes on July 20, 2016. The substrate used consisted of a mixture of 75% forest soil Oxisol and 25% carbonized rice husk, with incorporation of 2.0 g of NPK (5-30-15) fertilizer per tube, promoting a density of 0.578 g cm⁻³. Water retention capacity (WRC) was obtained considering the mass of the tubes with the seedlings after saturation and free drainage of water (saturated/drain substrate), obtained at maximum intervals of 15 days, with averages of 0.1535 cm³ cm⁻³ of substrate and maximum variation of 5.2% over the experimental period.

The factorial scheme adopted was 5 x 4 (shading screens x water replacement levels), on completely randomized design in the interior of shading modules, with three replicates (15 nurseries - experimental units). In each nursery, four replications (54 seedlings each) were evaluated for the different levels of water replacement.

The seedlings were cultivated on nursery benches, arranged in the east-west direction, with dimensions of 3.0 x 1.0 x 1.0 m (length, width and height). These experimental modules were covered on top, front and sides with black agricultural polyester nets with 35, 50, 65 and 80% of shading, in addition to the full sun condition. In-loco evaluations were performed between 10 and 14 h, to characterize the instantaneous attenuations of global radiation (I_G), photosynthetically active radiation (I_{PAR}) and luminance (Table 1).

During the experiment, in the condition of full sun, the meteorological variables were measured with an automatic station with the following sensors: PAR radiation (Licor) at 2 m height, wind speed and direction (anemometer, 03002-L RM Young) at 10 m height, psychrometer with thermometric shelter (Vaisala, CS 215) at 2 m height, rain gauge (TE 525) at 1.5 m height and sunshine recorder. Data acquisition was performed using a CR1000 datalogger operating at 1-Hz frequency and storing averages of 300 readings or 5 min. Inside the nurseries, for routine measurements (30-min intervals) of temperature and relative humidity, thermohygrometers (KlimaLogg Pro, TFA Dostmann GmbH & Co.KG) were installed at 1.50 m height, centralized inside each experimental nursery.

Destructive growth analyses were carried out at 20, 52 and 87 days after transplanting (DAT), determining seedling height (measured from the collar to the apical bud), stem diameter (measured at the seedling collar), number of leaves

Table 1. Percentages of average transmissivity of global radiation (I_G), photosynthetically active radiation (I_{PAR}) and luminance for different types of black polyester nets, in Sinop, MT state, Brazil

Commercial nets	I _G	Luminance	I _{PAR}
Black 35%	54.72 ± 8.62 ^a	51.67 ± 6.39	53.25 ± 6.42
Black 50%	35.59 ± 13.69	35.08 ± 12.39	33.55 ± 13.24
Black 65%	25.25 ± 10.50	23.91 ± 10.69	23.29 ± 11.26
Black 80%	13.77 ± 8.34	12.30 ± 7.99	12.58 ± 9.58

^a Mean ± standard deviation

(considering only fully expanded leaves), root dry mass (RDM) and shoot dry mass (SDM - stem + leaves) and total leaf area of the seedlings (determined with Li-3100 area meter).

The daily evapotranspiration of the seedlings (ET_c) was obtained by the direct weighing of four trays with 54 tubes (four replicates) for each shading condition. The daily ET_c was adopted as a reference for the water replacement (100%), applied manually (volume of water individualized per tube, split so as to not exceed the WRC - 44.5 cm³ tube⁻¹). The other values of water replacement evaluated were 75, 50 and 25% of ET_c, also applied manually.

After obtaining the ET_c, the crop coefficients (k_c) were defined by the ratio between ET_c and reference evapotranspiration (ET₀) obtained by the Penman-Monteith FAO-56 method (Allen et al., 1998; Monteiro et al., 2016). The coefficient of response of the seedlings to water deficit (k_y) was obtained according to Eq. 1, and in this case the potential yield (Y_m) in total dry mass of the seedling and the potential evapotranspiration (ET_m) were obtained at the level of 100% water replacement, for each shading condition.

$$1 - \frac{Y_r}{Y_m} = k_y \left(1 - \frac{ET_r}{ET_m} \right) \quad (1)$$

where:

Y_r and Y_m - actual and potential maximum yield, respectively, kg ha⁻¹; and,

ET_r and ET_m - actual and maximum evapotranspiration, respectively, mm.

The accumulated degree-days (ADD) were determined using the methodology of Ometto recommended by Souza et al. (2011), considering minimum (T_b) and maximum (T_B) basal temperatures of 14.5 and 34.4 °C, respectively.

The data were subjected to analysis of variance by F test and, when significant, means were compared by Tukey test at p ≤ 0.05, or regressions were adjusted for the quantitative variables.

RESULTS AND DISCUSSION

The reference evapotranspiration (ET₀) showed large oscillations after 30 DAT, with minimum of 0.42 mm d⁻¹ and maximum of 5.09 mm d⁻¹ (Figure 1A), whereas until 27 DAT the mean value of ET₀ was 2.46 mm d⁻¹. These oscillations of ET₀ occurred in response to variations in the water vapor deficit in the atmosphere and its relations with the incidence of solar radiation and soil water availability to plants (Lemos Filho et al., 2010; Coletti et al., 2012; Pereira et al., 2013).

The daily variations of the evapotranspiration of Amazonian yellow ipe seedlings (ET_c), regardless of the level of shading, showed similar behavior to that of ET₀ (Figure 1A), with reductions in the periods of greater cloudiness and rainfalls.

The average ET_c in the shading levels was equal to 3.37, 3.22, 2.87, 2.61 and 1.92 mm d⁻¹ for full sun and black polyester nets with 35, 50, 65 and 80% shading, respectively. In this case, 80% shading led to lower values of ET_c, with range of variation from 0.03 to 4.07 mm d⁻¹, whereas under full sun, the maximum ET_c reached 6.47 mm d⁻¹. The values of ET_c obtained in this study corroborate those reported by Fausto et al. (2017), who found average ET_c of 3.17 mm d⁻¹ for cashew seedlings, using constant-level water-table lysimeters.

The variation of the ET_c of Amazonian yellow ipe throughout the experimental period can be attributed to the meteorological conditions and development of the seedlings. However, it is worth pointing out that, when the crop does not have a remarkable differentiation of phenological stage, the variation in water requirement results mainly from the evaporation of water from the soil (substrate) and irrigation management conditions (Allen et al., 1998; Monteiro et al., 2016).

The accumulated depths of ET₀ (Figure 1B) and rainfall (Figure 1A) at 86 DAT were 195.2 and 90.0 mm, respectively, whereas the accumulated ET_c was equal to 239.2, 228.6, 204.1, 185.7 and 136.3 mm for the cultivation under full sun and 35, 50, 65 and 80% shading, respectively (Figure 1B). These differences in ET_c represent a 43% reduction in the

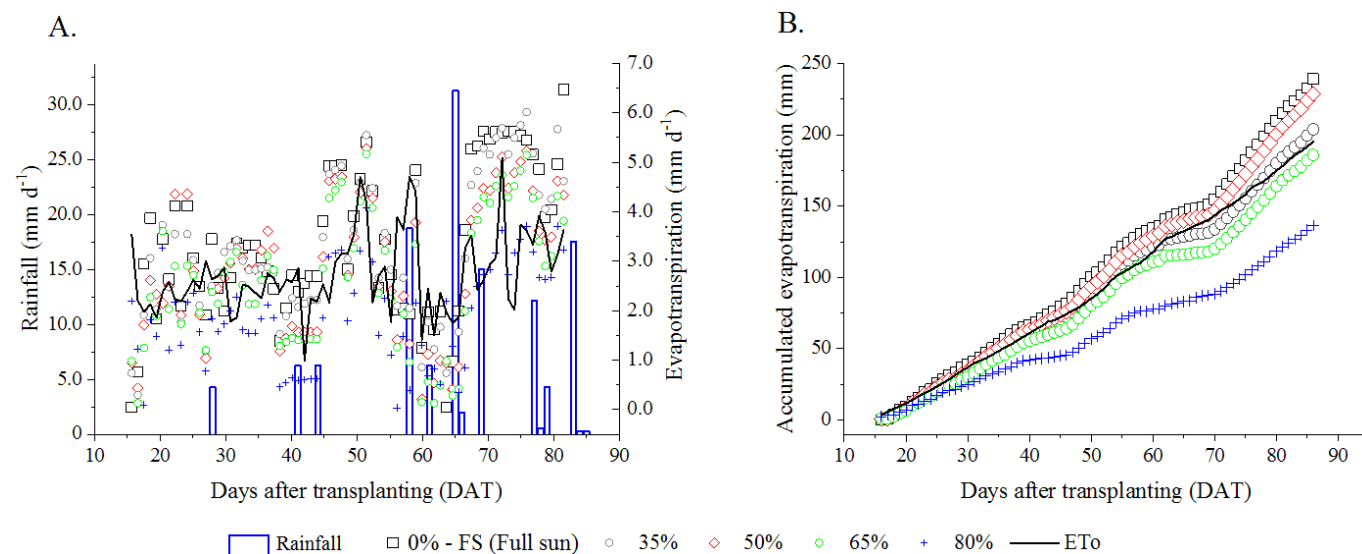


Figure 1. Rainfall, reference evapotranspiration (ET₀) and crop evapotranspiration (A) and accumulated potential evapotranspiration (B) of Amazonian yellow ipe seedlings under different shading conditions, in Sinop, MT, Brazil, between July 20 and October 14, 2016

accumulated water demand of the yellow ipe seedlings under 80% shading when compared with seedlings under full sun. The intensity of the solar radiation incident on the plants is proportionally related to the variation of the evapotranspiration of a vegetated surface (Lozano et al., 2017), since the increase of global radiation, depending on the radiation balance, can be accompanied by higher availability of latent heat and sensible heat, consequently increasing the ETC.

Therefore, the increase in the shading level reduced the crop coefficients (kc), regardless of the development stage of the seedlings (Figure 2). The fitted regressions (second-order polynomials) for estimates of kc at the different levels showed the accumulated thermal sum as independent variable and had determination coefficients (R^2) between 0.72 and 0.83, that can

$$\begin{array}{ll} 0\% \text{ FS} & kc = -0.59139 + 0.00467 \text{ ADD} - 2.69447E-6 \text{ ADD}^2 \quad R^2 = 0.7811 \\ 35\% & kc = -0.15718 + 0.00319 \text{ ADD} - 1.91073E-6 \text{ ADD}^2 \quad R^2 = 0.7271 \\ 50\% & kc = -0.28882 + 0.00361 \text{ ADD} - 1.98832E-6 \text{ ADD}^2 \quad R^2 = 0.8290 \\ 65\% & kc = -0.09255 + 0.00271 \text{ ADD} - 1.59189E-6 \text{ ADD}^2 \quad R^2 = 0.7246 \\ 80\% & kc = 0.0074 + 0.00147 \text{ ADD} - 6.70877E-7 \text{ ADD}^2 \quad R^2 = 0.7438 \end{array}$$

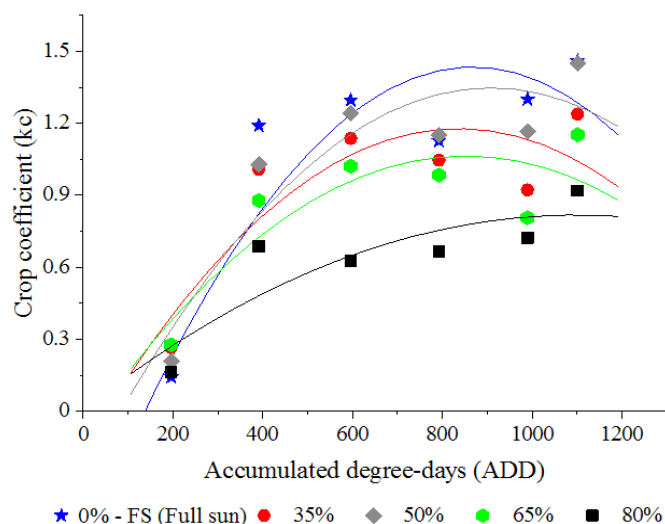


Figure 2. Crop coefficients (kc) of Amazonian yellow ipe seedlings under different shading conditions as a function of the accumulated degree-days

be considered satisfactory, since the crop used in this study is a tree species and, therefore, does not exhibit remarkable differentiation of phenological stages in the seedling phase.

The initial accumulated thermal sum for the different shading levels was 391.49 ADD, and the kc values for this period were 0.823, 0.798, 0.820, 0.724 and 0.465 under the conditions of full sun and shading of 35, 50, 65 and 80%, respectively. In the intermediate phase, the accumulated thermal sum was 792.5 ADD, with mean kc values of 1.417, 1.171, 1.323, 1.055 and 0.736. At the end of the experiment (87 DAT), the accumulated thermal sum was 1101.6 ADD and the mean kc values were 1.283, 1.038, 1.275, 0.961 and 0.798 for the same cultivation conditions cited above.

With regard to forest species, studies on applications of thermal sum are scarce, especially associating kc patterns with accumulated degree-days, thus corroborating the relevance of these applications for irrigation managements based on meteorological variables that can be monitored at a low cost.

As for the morphometric growth variables of the seedlings, it was observed that their height was influenced by both shading levels and water replacement levels, regardless of the period of the cycle (Table 2); however, no pattern of effect of increment and/or reduction was observed.

At 52 DAT, the first occurrences of seedling death were observed in the replacement of 25% ETC under shading levels of 35 and 50%. This fact demonstrates a considerable tolerance of Amazonian yellow ipe seedlings to water stress; however, under water replacements lower than 75% ETC, in general, the plant does not complete the seedling phase (exception for the 35% shade net). Thus, the irrigation management conditions in nurseries for this species should consider the replacements of 75 and 100% ETC, which lead to better plant development.

The effects of irrigation depths on the height and diameter of seedlings of forest or fruit species vary depending on plant size, growth habit, type of leaf, characteristics of the substrate and the growing container, in addition to the microclimatic conditions of the growing environment (Monteiro et al., 2016).

Table 2. Morphometric variables of Amazonian yellow ipe seedlings in different periods of evaluation, water replacement (WR) levels and shading levels (SL)

WR (%)	09/08/2016 – 20 DAT				09/09/2016 – 52 DAT				15/10/2016 – 87 DAT			
	25	50	75	100	25	50	75	100	25	50	75	100
Plant height (cm)												
0% (FS)	4.00 ABa	4.14 Ba	3.77 Ba	4.04 Ca	6.43 Ba	4.14 Cb	5.60 Bab	5.16 Cab	-	-	7.01 Ba	8.22 Ba
35%	3.99 ABb	3.94 Bb	5.33 ABa	5.41 Ba	-	5.10 BCb	6.72 Bab	7.83 Ba	-	6.38	8.21 ABa	9.86 ABa
50%	4.52 Aab	5.11 Aa	4.24 Bab	3.88 Cb	-	5.73 Bb	6.58 Bab	7.13 Ba	-	-	6.67 Ba	7.48 Ba
65%	3.23 Bc	3.82 Bbc	6.17 Aa	4.54 Cb	5.42 Bb	6.33 Bab	8.35 Aa	8.04 Aa	-	-	10.09 Aa	11.14 Aa
80%	4.96 Ac	5.83 Ab	4.97 ABc	7.06 Aa	8.10 Aa	8.23 Aa	6.48 Bb	9.48 Aa	-	-	7.58 ABb	11.68 Aa
Stem diameter (mm) ¹												
0% (FS)	1.0	1.2	1.2	1.2	1.4	1.6	1.6	1.8	-	-	2.6	1.8
35%	0.7	0.8	1.0	0.9	-	1.1	1.6	1.9	-	1.9	2.0	2.3
50%	0.7	0.9	0.7	0.8	-	1.5	1.8	2.2	-	-	1.8	2.4
65%	0.6	0.9	1.1	0.9	1.3	1.6	2.3	1.8	-	-	2.3	2.6
80%	0.8	1.1	1.0	1.0	1.9	2.4	1.6	2.0	-	-	1.3	2.2
Number of leaves												
0% (FS)	3.9 Ba	3.6 Ba	4.0 Ca	4.5 Ca	4.7 Ba	3.6 Bb	4.6 Cab	4.9 Ca	-	-	4.4 Aa	5.7 Ca
35%	5.1 Aa	5.5 Aa	5.2 Ba	5.2 Ba	-	3.7 Bb	4.7 Cb	6.3 Ba	-	5.4	4.6 Ab	11.4 Aa
50%	4.8 ABb	5.9 Aa	5.1 Bab	4.8 Bb	-	4.3 Bb	5.4 BCb	7.7 Aa	-	-	5.9 Ab	8.0 Ba
65%	4.2 Bb	4.2 Bb	6.5 Aa	5.7 ABa	5.8 Bb	5.7 Ab	8.6 Aa	7.6 Aa	-	-	4.7 Ab	7.6 Ba
80%	5.6 Aab	5.2 Ab	5.8 ABab	6.3 Aa	7.0 Ab	5.7 Ac	6.3 Bbc	8.3 Aa	-	-	4.3 Ab	7.7 Ba

Means followed by the same uppercase and lowercase letters, in the column and in the row, respectively (for the same morphometric variable and period of collection), do not differ by Tukey test at $p \leq 0.05$; FS - Full sun; - No significant differences were observed for stem diameter

In general, water deficit caused by smaller irrigation depths tends to restrict the growth of forest seedlings in diameter and height (Cabral et al., 2004; Lenhard et al., 2010; Scalón et al., 2011; Ferreira et al., 2015; Silva et al., 2015a, b; Duarte et al., 2016). However, in this experiment no significant differences were observed for the increment in stem diameter, regardless of the cultivation condition.

The number of leaves under the condition of potential evapotranspiration (100% water replacement) was lower in the cultivation under full sun, regardless of age (Table 2). At 87 DAT, the water deficits caused by the replacement of 75% ETC reduced the number of leaves in 22.8% (full sun) and in 59.6% (35% shading), when compared to the replacement of 100% ETC. These percentages of leaf abscission depend on the resistance of the species to water deficit and agree with results reported by Duarte et al. (2016), who obtained a 40% reduction in the number of leaves of ‘paricá’ seedlings subjected to a 50% reduction in the volume applied in the reference cultivation.

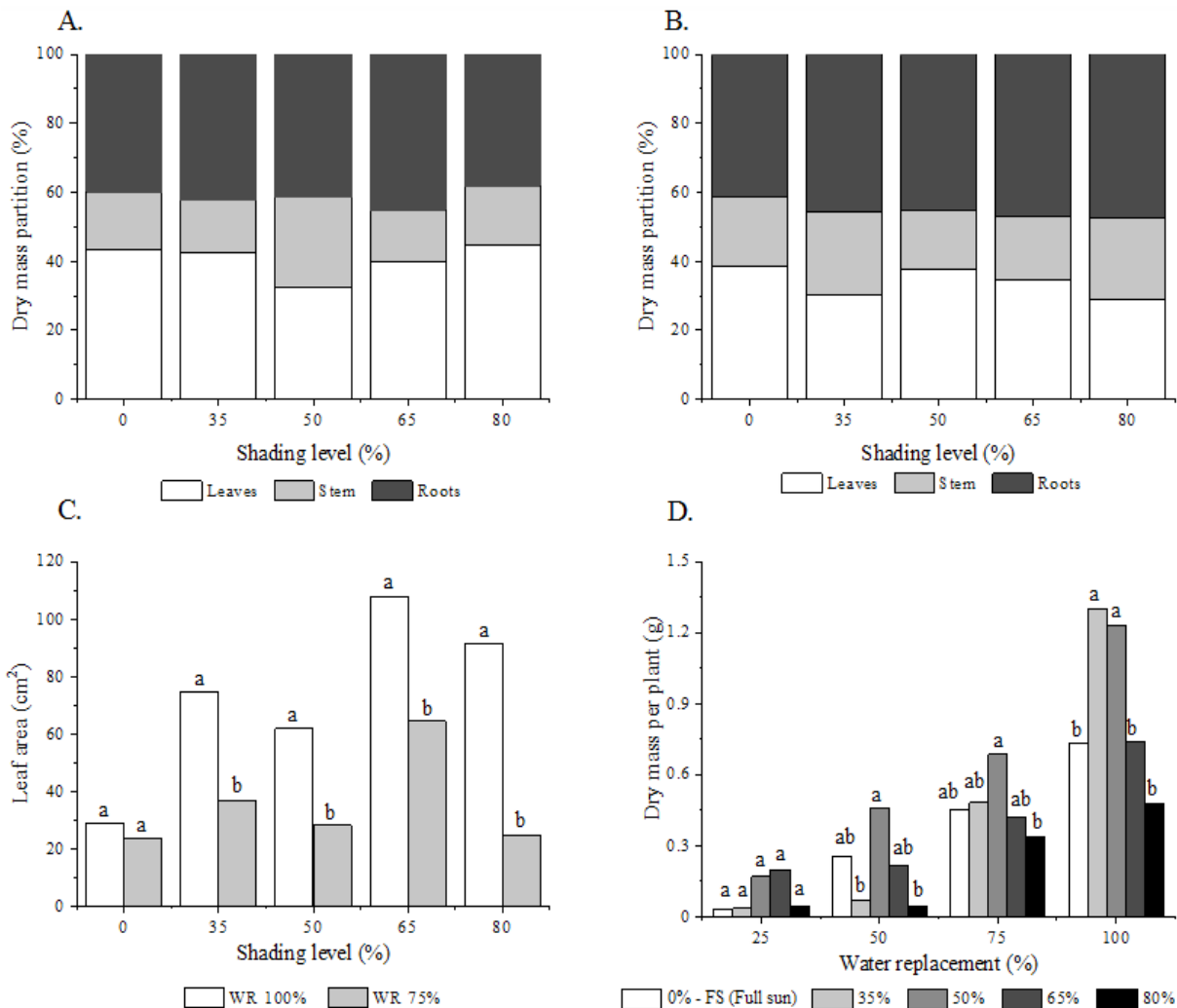
Greater proportion of leaf number and height was also observed by Cabral et al. (2004), in *Tabebuia aurea* seedlings grown with replacement of 100% field capacity (FC). However, the lower water supply (25% FC) caused a lower increment in the aforementioned variables, the authors state that this species is tolerant to water stress.

For tropical plants, with fast growth, the water supply tends to affect growth and development more than all environmental factors combined (Lenhard et al., 2010; Scalón et al., 2011; Ferreira et al., 2015). Thus, the shading associated with the different levels of water replacement can promote more pronounced and direct effects on evapotranspiration through temperature variations than on the growth variables (Monteiro et al., 2016). Oliveira & Perez (2012) state that water can limit plant growth in environments with higher intensity of solar radiation, whereas light can become a limiting factor to plant growth in shaded environments.

The analyses of dry mass partitions and leaf area were carried out in the treatments of 75 and 100% water replacement (Figures 3A and B), because these were the only levels of water replacement in which there were surviving plants at the end of the experiment.

Regardless of the level of water replacement (100 and 75% ETC), the pattern of partition of leaf, stem and root dry masses was similar under all shading levels and no significant differences were observed. This may demonstrate a capacity of adaptation of Amazonian yellow ipe seedlings to different luminosity levels, provided they are not cultivated under water stress conditions.

According to Lorenzi (1992), the Amazonian yellow ipe is a heliophyte, classified in the successional group of late



Means followed by the same letters at same level do not differ by Tukey test at $p \leq 0.05$

Figure 3. Dry mass partitions at 100% water replacement (A) and 75% water replacement (B), leaf area (C) and dry mass (D) of Amazonian yellow ipe seedlings at different levels of shading and water replacement (WR), at 87 DAT

secondary, so it can grow satisfactorily in environments with high luminosity. However, according to Aguiar et al. (2011), intermediate species, as is the case of Amazonian yellow ipe, can respond, in terms of growth, both to the condition of intense radiation and to certain levels of shading.

Leaf area was significantly higher in plants under 100% water replacement (Figure 3C). 65% shading led to the largest leaf areas under 100 and 75% water replacements, with 107.97 and 64.54 cm², respectively. These results corroborate several studies with seedlings of various tree species, cultivated under different shading levels, which indicate a progressive quadratic increment of leaf area as a function of increased shading (Cabral et al., 2004; Mota et al., 2012; Oliveira & Perez, 2012; Nery et al., 2016).

Change of leaf area in response to an environmental factor constitutes a mechanism developed by plants to compensate for the lower intensities of incident solar radiation (Larcher, 2004). Therefore, such behavior may be an additional indication that the Amazonian yellow ipe is a species that has adaptation to different luminosity conditions.

The dry mass of the plant increased with the increment in the water replacement levels (Figure 3D). The application of 100% ETc led to increments of 69.7, 126.9, 105.9, 54.3 and 43.4% in the dry mass yields, compared to the replacement of 25% ETc, under the conditions of full sun and 35, 50, 65 and 80% shading, respectively.

In this context, based on the joint analysis of the morphometric parameters, it can be indicated that the optimum irrigation depth for this species is given by the replacement of 100% ETc, with cultivation under black net with 35% shading, a condition that led to highest biomass accumulation (1.3035 g plant⁻¹). These results also show that, in this case, the limiting factor for plant biomass production is water and not the intensity of incident radiation.

Similar results have been found by Mota et al. (2012) for seedlings of *Dipteryx alata*, by Ferreira et al. (2012) for seedlings of *Piptadenia stipulacea* and *Anadenanthera colubrina*, and by Nery et al. (2016) for seedlings of *Calophyllum brasiliense*. In these cases, the highest increments of dry mass were also observed under intermediate shading levels.

Table 3 shows the mean values of the parameters that compose the analysis of the water sensitivity coefficients (ky),

considering the dry mass yields according to the volume of water applied. In this case, the 100% water replacement was considered as a reference for the potential biomass yield.

According to Doorenbos & Kassam (1979), the higher the value of ky under deficit irrigation conditions, the crop will have higher yield losses as a response to water deficit. Therefore, ky values lower than 1 indicate that the crop can be tolerant to water deficit under the conditions to which it is exposed, or, at the phenological stage in which it is, and in this situation, the reduction of dry mass yield is lower than the water restriction to which the plant was subjected. By contrast, values greater than 1 may indicate that the plant is sensitive to deficit irrigation, and the reduction of yield is larger (Silva et al., 2014).

There is a decrease in ky values with the increase in the water replacement level, with variations from 0.89 to 1.04; 1.06 to 1.18 and 1.10 to 1.28 for water replacements of 75, 50 and 25%, respectively. Thus, it can be verified that the reduction in the relative dry mass yield (1-Yr/Ym) of the plants was more pronounced under the 25% water replacement, regardless of the level of shading.

Among the different shading levels, water restriction had a higher impact on dry mass yield under 80% shading and 25% water replacement (ky = 1.28). However, for causing an accentuated reduction of accumulated ETc, this same shading level also led to the smallest effect of water deficit on the dry mass production of the plants with the increase in the level of water replacement (ky = 0.89).

Sensitivity to water deficit can be classified into four categories according to Doorenbos & Kassam (1979): ky < 0.85 - low, 0.85 < ky < 1.00 - low/medium, 1.00 < ky < 1.15 - medium/high and ky > 1.15 - high. Therefore, the obtained results show that Amazonian yellow ipe seedlings have higher water sensitivity under conditions of deficit irrigation associated with higher levels of shading.

Studies on the water sensitivity factor for tree crops are scarce, so there are no reference values of ky for comparative analysis, unlike what occurs for agricultural crops.

The short range of variation of ky in the present study can be explained by the fact that forest species in the seedling phase exhibit only one phenological stage, the vegetative

Table 3. Water sensitivity of Amazonian yellow ipe seedlings under different shading conditions and water replacement levels

Shading level	Water replacement	ETr ¹	ETm ²	(1-ETr/ETm)	Yr ³	Ym ⁴	(1-Yr/Ym)	ky
		(mm)			(g m ⁻²)			
0% (FS)	25%	55.99	239.18	0.77	31.68	340.46	0.91	1.18
	50%	37.39	239.18	0.84	31.68	340.46	0.91	1.07
	75%	166.22	239.18	0.31	239.41	340.46	0.30	0.97
35%	25%	27.64	203.77	0.86	23.57	519.93	0.95	1.10
	50%	78.71	203.77	0.61	180.86	519.93	0.65	1.06
	75%	129.87	203.77	0.36	323.11	519.93	0.38	1.04
50%	25%	39.83	228.58	0.83	24.71	928.10	0.97	1.18
	50%	36.89	228.58	0.84	47.49	928.10	0.95	1.13
	75%	90.55	228.58	0.60	344.18	928.10	0.63	1.04
65%	25%	53.66	185.73	0.71	121.11	874.98	0.86	1.21
	50%	87.61	185.73	0.53	327.59	874.98	0.63	1.18
	75%	101.13	185.73	0.46	487.79	874.98	0.44	0.97
80%	25%	58.52	136.28	0.57	140.90	527.33	0.73	1.28
	50%	52.08	136.28	0.62	155.14	527.33	0.71	1.14
	75%	69.68	136.28	0.49	298.11	527.33	0.43	0.89

¹ ETr - Accumulated real evapotranspiration; ² ETm - Accumulated maximum evapotranspiration in the treatment with 100% replacement, representing the ETc; ³ Yr - Real yield;

⁴ Ym - Maximum yield in the treatment with 100% replacement; ky - Water sensitivity coefficient (dimensionless); FS - Full sun

stage. According to Doorenbos & Kassam (1979), the greatest contributions to the variations of K_y values come from changes in phenological stages of the plant and its interactions with environmental conditions, especially in the reproductive stages.

CONCLUSIONS

1. The daily water consumption of Amazonian yellow ipe seedlings decreases with the increase in the shading level.
2. Amazonian yellow ipe is sensitive to water deficit in the seedling phase, with greater limitations of yield (dry mass) under conditions of full sun and increased shading level.
3. For the production of Amazonian yellow ipe seedlings, it is recommended the irrigation depth of 100% E_{Tc}, under 35-50% shading, for regions with meteorological seasonality similar to that of the studied area.

LITERATURE CITED

- Aguiar, F. F. A.; Kanashiro, S.; Tavares, A. R.; Nascimento, T. D. R. do; Rocco, F. M. Crescimento de mudas de pau-brasil (*Caesalpinia echinata* Lam.), submetidas a cinco níveis de sombreamento. *Revista Ceres*, v.58, p.729-734, 2011. <https://doi.org/10.1590/S0034-737X2011000600008>
- Allen, R. G.; Pereira, L. S.; Raes, D.; Smith, M. Crop evapotranspiration: Guidelines for computing crop water requirements. Rome: FAO, 1998. 300p.
- Cabral, E. L.; Barbosa, D. C. de A.; Simabukuro, E. A. Crescimento de plantas jovens de *Tabebuia aurea* (Manso) Benth. & Hook. f. ex S. Moore submetidas a estresse hídrico. *Acta Botanica Brasilica*, v.18, p.241-251, 2004. <https://doi.org/10.1590/S0102-33062004000200004>
- Coletti, A. J.; Dallacort, R.; Dalchiavon, F. C.; Martins, J. A.; Santi, A.; Inoue, M. H. Evapotranspiração e coeficiente de cultivo da cultura do pinhão manso. *Revista Agrarian*, v.5, p.373-383, 2012.
- Doorenbos, J.; Kassam, A. H. Yield response to water. Rome: FAO, 1979. Technical Note, 33. <https://doi.org/10.1016/B978-0-08-025675-7.50021-2>
- Duarte, D. M.; Rocha, G. T.; Lima, F. B. de; Matos, F. S.; Rodrigues, F. Responses of paricá seedlings to water stress. *Floresta*, v.46, p.405-412, 2016. <https://doi.org/10.5380/ufv.v46i3.39529>
- Fausto, M. A.; Rihbane, F. E. C.; Campelo Júnior, J. H.; Lobo, F. de A.; Ortíz, C. E. R. Coeficiente de cultura e necessidades hídricas de mudas de cajueiro anão em condições de cerrado. *Ambiência*, v.13, p.301-310, 2017. <https://doi.org/10.5935/ambiencia.2017.02.03>
- Fávero, C.; Lovo, I. C.; Mendonça, E. de S. Recuperação de área degradada com sistema agroflorestal no Vale do Rio Doce, Minas Gerais. *Revista Árvore*, v.32, p.861-868, 2008. <https://doi.org/10.1590/S0100-67622008000500011>
- Ferreira, L.; Chalub, D.; Muxfeldt, R. Ipê-amarelo: *Tabebuia serratifolia* (Vahl) Nichols. Manaus: INPA, 2004. 2p. Informativo Técnico Rede de Sementes da Amazônia, 5
- Ferreira, W. N.; Lacerda, C. F. de; Costa, R. C. da; Medeiros Filho, S. Effect of water stress on seedling growth in two species with different abundances: The importance of stress resistance syndrome in seasonally dry tropical forest. *Acta Botanica Brasilica*, v.29, p.375-382, 2015. <https://doi.org/10.1590/0102-33062014abb0045>
- Ferreira, W. N.; Zandavalli, R. B.; Bezerra, A. M. E.; Medeiros Filho, S. Crescimento inicial de *Piptadenia stipulacea* (Benth.) Ducke (Mimosaceae) e *Anadenanthera colubrina* (Vell.) Brenan var. *cebil* (Griseb.) Altshul (Mimosaceae) sob diferentes níveis de sombreamento. *Acta Botanica Brasilica*, v.26, p.408-414, 2012. <https://doi.org/10.1590/S0102-33062012000200016>
- Grose, S. O.; Olmstead, R. G. Taxonomic revisions in the polyphyletic genus *Tabebuia* s. l. (Bignoniaceae). *Systematic Botany*, v.32, p.660-670, 2007. <https://doi.org/10.1600/036364407782250652>
- Larcher, W. *Ecofisiologia vegetal*. São Carlo: Rima, 2004. 531p.
- Lemos Filho, L. C. A.; Carvalho, L. G.; Evangelista, A. W. P.; Alves Junior, J. Análise espacial da influência dos elementos meteorológicos sobre a evapotranspiração de referência em Minas Gerais. *Revista Brasileira de Engenharia Agrícola e Ambiental*, v.14, p.1294-1303, 2010. <https://doi.org/10.1590/S1415-43662010001200007>
- Lenhard, N. R.; Scalon, S. de P. Q.; Novelino, J. O. Crescimento inicial de mudas de pau ferro (*Caesalpinia ferrea* Mart. ex Tul. var. *leiostachya* Benth.) sob diferentes regimes hídricos. *Ciência e Agrotecnologia*, v.34, p.870-877, 2010. <https://doi.org/10.1590/S1413-70542010000400011>
- Lorenzi, H. *Árvores brasileiras: Manual de identificação e cultivo de plantas arbóreas nativas do Brasil*. 1.ed. Nova Odessa: Instituto Plantarum, 1992. 352p.
- Lozano, C. S.; Rezende, R.; Freitas, P. S. L. de; Hachmann, T. L.; Santos, F. A. S.; Andrian, A. F. B. A. Estimation of evapotranspiration and crop coefficient of melon cultivated in protected environment. *Revista Brasileira de Engenharia Agrícola e Ambiental*, v.21, p.758-762, 2017. <https://doi.org/10.1590/1807-1929/agriambi.v21n11p758-762>
- Monteiro, E. B.; Silva, A. C. da; Souza, A. P.; Tanaka, A. A.; Ferneda, B. G.; Martim, C. C. Water requirements and crop coefficients of tropical forest seedlings in different shading conditions. *Revista Brasileira de Engenharia Agrícola e Ambiental*, v.20, p.709-715, 2016. <https://doi.org/10.1590/1807-1929/agriambi.v20n8p709-715>
- Mota, L. H. de S.; Scalon, S. de P. Q.; Heinz, R. Sombreamento na emergência de plântulas e no crescimento inicial de *Dipteryx alata* Vog. *Ciência Florestal*, v.22, p.423-432, 2012. <https://doi.org/10.5902/198050986611>
- Nery, F. C.; Prudente, D. de O.; Alvarenga, A. A. de; Paiva, R.; Nery, M. C. Desenvolvimento de mudas de guanandi (*Calophyllum brasiliense* Cambess.) sob diferentes condições de sombreamento. *Revista Brasileira de Biociências*, v.14, p.187-192, 2016.
- Oliveira, A. K. M. de; Perez, S. C. J. de G. A. e. Crescimento inicial de *Tabebuia aurea* sob três intensidades luminosas. *Ciência Florestal*, v.22, p.263-273, 2012. <https://doi.org/10.5902/198050985733>
- Pereira, A. R.; Sediya, G. C.; Villa Nova, N. A. Evapotranspiração. Campinas: FUNDAG, 2013. 323p.
- Santos, C. S. dos; Montenegro, A. A. de A.; Santos, M. A. L. dos; Pedrosa, E. M. R. Evapotranspiration and crop coefficients of *Moringa oleifera* under semi-arid conditions in Pernambuco. *Revista Brasileira de Engenharia Agrícola e Ambiental*, v.21, p.840-845, 2017. <https://doi.org/10.1590/1807-1929/agriambi.v21n12p840-845>

- Scalon, S. de P. Q.; Mussury, R. M.; Euzébio, V. L. de M.; Kodama, F. M.; Kissmann, C. Estresse hídrico no metabolismo e crescimento inicial de mudas de mutambo (*Guazuma ulmifolia* Lam.). *Ciência Florestal*, v.21, p.655-662, 2011. <https://doi.org/10.5902/198050984510>
- Silva, A. R. A. da; Bezerra, F. M. L.; Freitas, C. A. S. de; Amorim, A. V.; Carvalho, L. C. C. de; Pereira Filho, J. V. Coeficientes de sensibilidade ao déficit hídrico para a cultura do girassol nas condições do semiárido cearense. *Revista Brasileira de Agricultura Irrigada*, v.8, p.38-53, 2014. <https://doi.org/10.7127/rbai.v8n100185>
- Silva, C. A. da; Dourado Neto, D.; Silva, C. J. da; Melo, B. de. Desenvolvimento de mudas de pitangueira em função de lâminas de irrigação em dois tamanhos de recipiente. *Irriga*, v.20, p.638-651, 2015a. <https://doi.org/10.15809/irriga.2015v20n4p638>
- Silva, C. J. da; Silva, C. A. da; Freitas, C. A. de; Golynski, A.; Golynski, A. A. Produção e crescimento de mudas de baruzeiro em função de recipientes e lâminas de irrigação. *Irriga*, v.20, p.652-666, 2015b. <https://doi.org/10.15809/irriga.2015v20n4p652>
- Souza, A. P. de; Mota, L. L. da; Zamadei, T.; Martim, C. C.; Almeida, F. T. de; Paulino, J. Classificação climática e balanço hídrico climatológico no estado de Mato Grosso. *Nativa*, v.1, p.34-43, 2013. <https://doi.org/10.14583/2318-7670.v01n01a07>
- Souza, A. P. de; Ramos, C. M. C.; Lima, A. D. de; Florentino, H. de O.; Escobedo, J. F. Comparison of methodologies for degree-day estimation using numerical methods. *Acta Scientiarum. Agronomy*, v.33, p.391-400, 2011. <https://doi.org/10.4025/actasciagron.v33i3.6018>